



Microresistivity Log

DIGITAL LOG (785) 625-3858

15-147-20,668-00-00

API No.

Company **Bach Oil Production**
 Well **Brands Unit No. 1**
 Field **Wildcat**
 County **Phillips** State **Kansas**

Location
SE SW SE SE
160' FSL & 830' FEL

Sec: **4** Twp: **2S** Rge: **19W**

Other Services
 CNL/CDL
 DIL/BHCS

Elevation

Permanent Datum **Ground Level** Elevation **2203**
 Log Measured From **Kelly Bushing** 5 Ft. Above Perm. Datum
 Drilling Measured From **Kelly Bushing**

K.B. 2208
 D.F. 2203
 G.L. 2203

Date	3/10/2012
Run Number	Two
Depth Driller	3809
Depth Logger	3809
Bottom Logged Interval	3808
Top Log Interval	3000
Casing Driller	8.625 @ 227
Casing Logger	227
Bit Size	7.875
Type Fluid in Hole	Chemical
Salinity, ppm CL	800
Density / Viscosity	8.8 58
pH / Fluid Loss	10.5 7.6
Source of Sample	Flowline
Rm @ Meas. Temp	1.50 @ 55
Rmf @ Meas. Temp	1.13 @ 55
Rmc @ Meas. Temp	2.03 @ 55
Source of Rmf / Rmc	Charts
Rm @ BHT	.72 @ 114
Operating Rig Time	4 1/2 Hours
Max Rec. Temp. F	114
Equipment Number	10
Location	Hays
Recorded By	J. Long
Witnessed By	Bob Petersen

<<< Fold Here >>>

All interpretations are opinions based on inferences from electrical or other measurements and we cannot and do not guarantee the accuracy or correctness of any interpretation, and we shall not, except in the case of gross or willful negligence on our part, be liable or responsible for any loss, costs, damages, or expenses incurred or sustained by anyone resulting from any interpretation made by any of our officers, agents or employees. These interpretations are also subject to our general terms and conditions set out in our current Price Schedule.

Comments

Thank you for using Log-Tech, Inc.
 (785) 625-3858

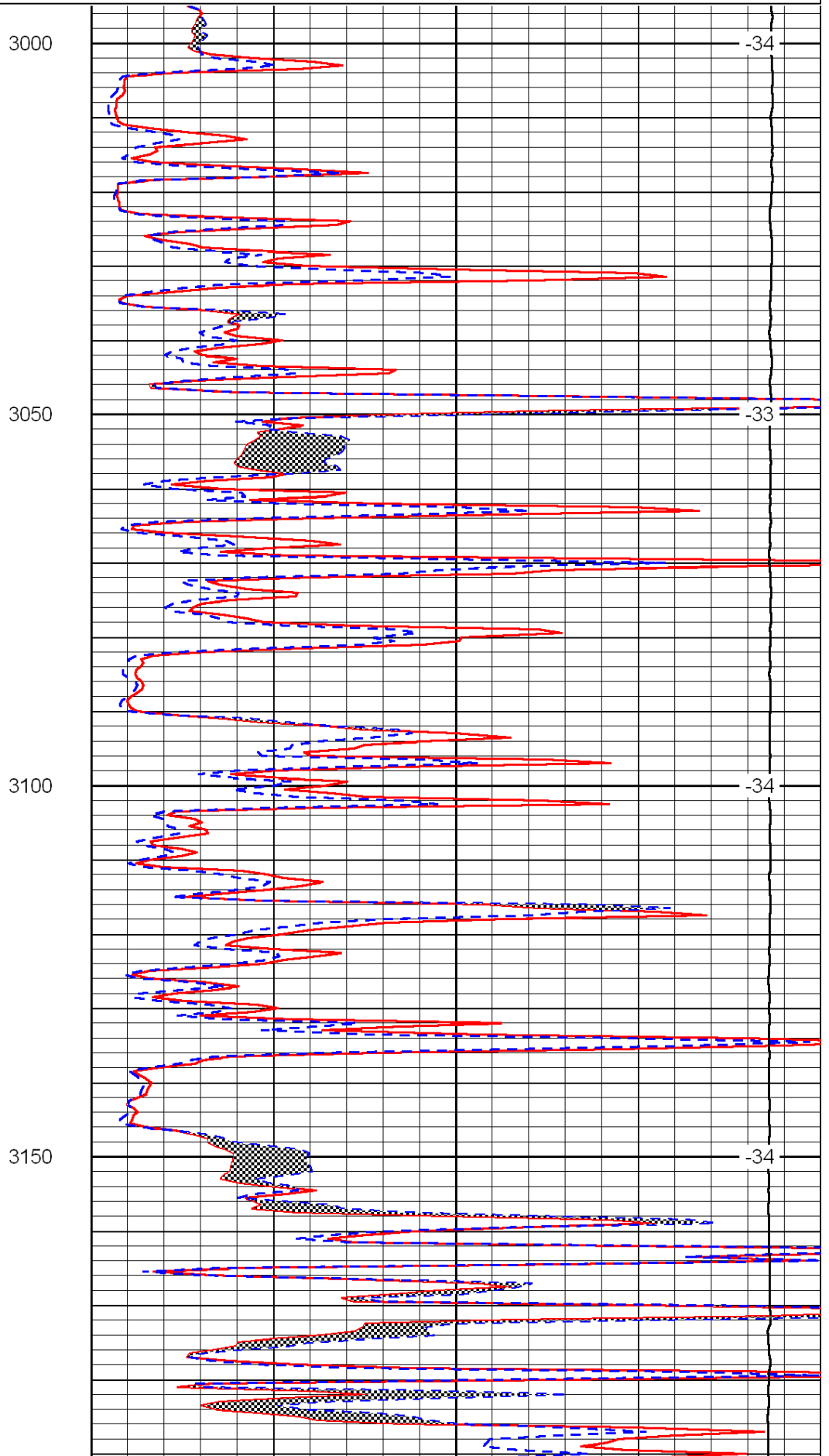
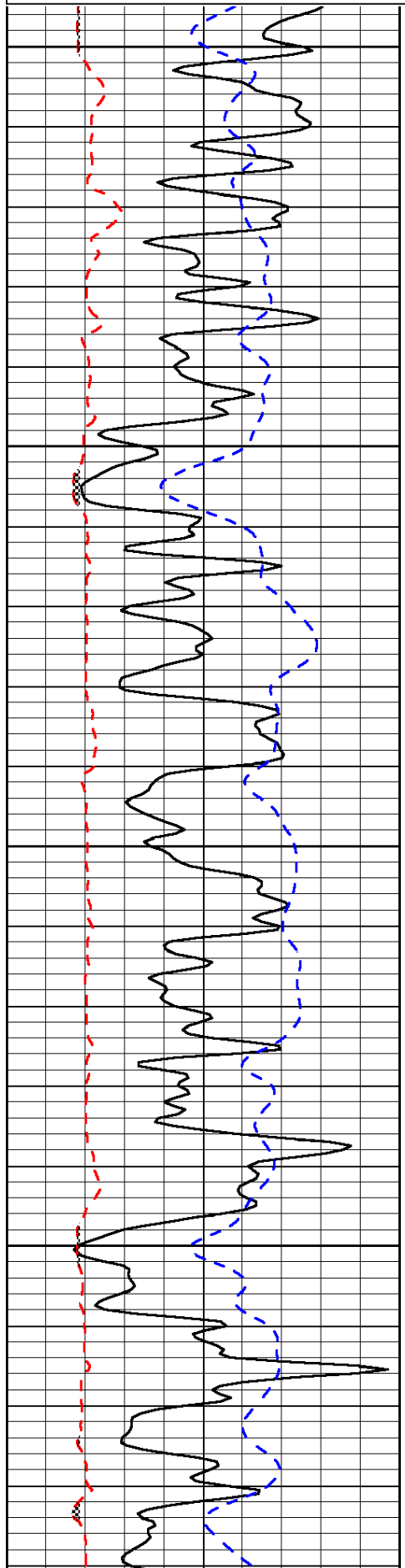
Phillipsburg, 10 North to Hunter Road, 7 1/4 West, North Into

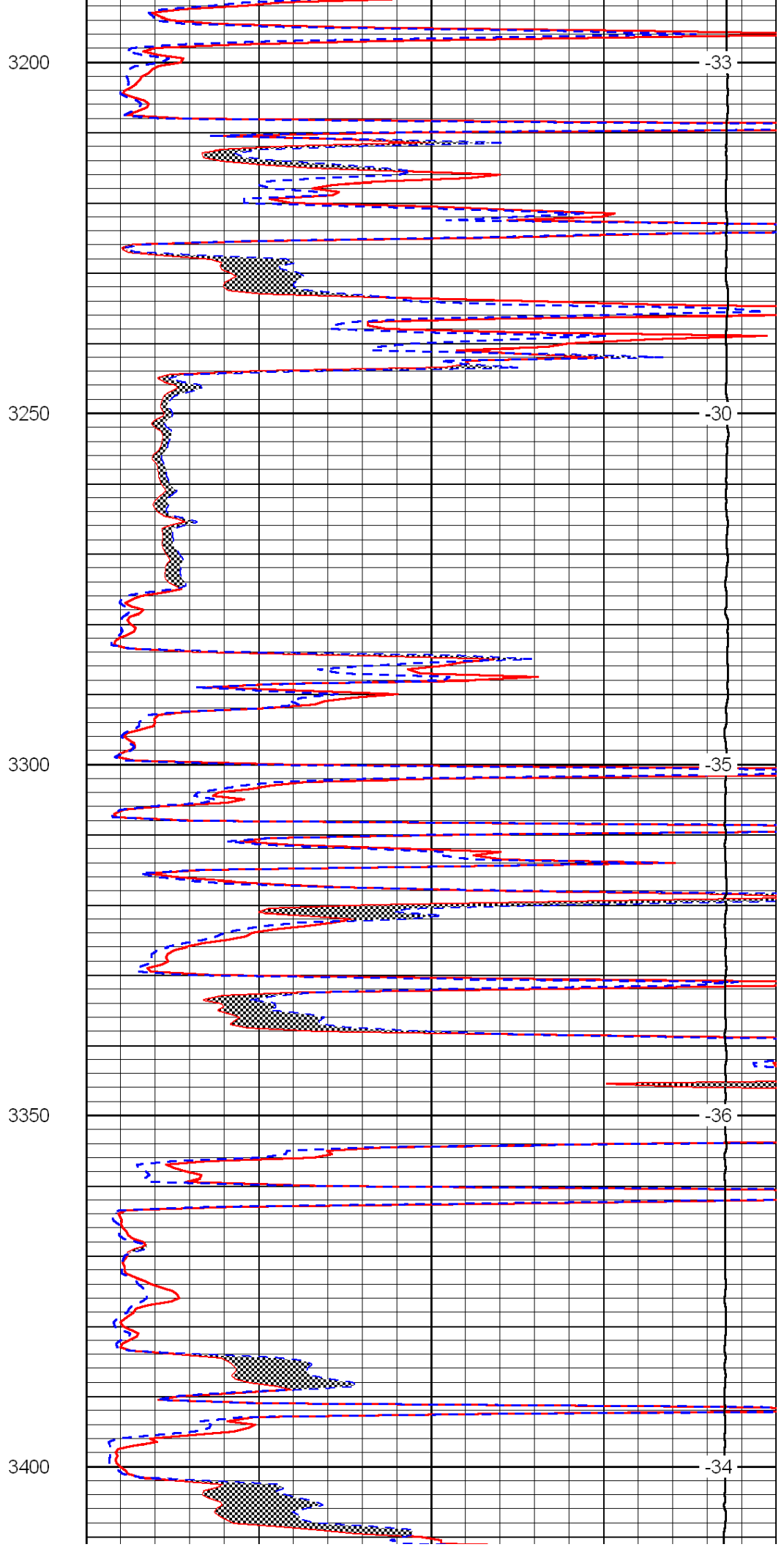
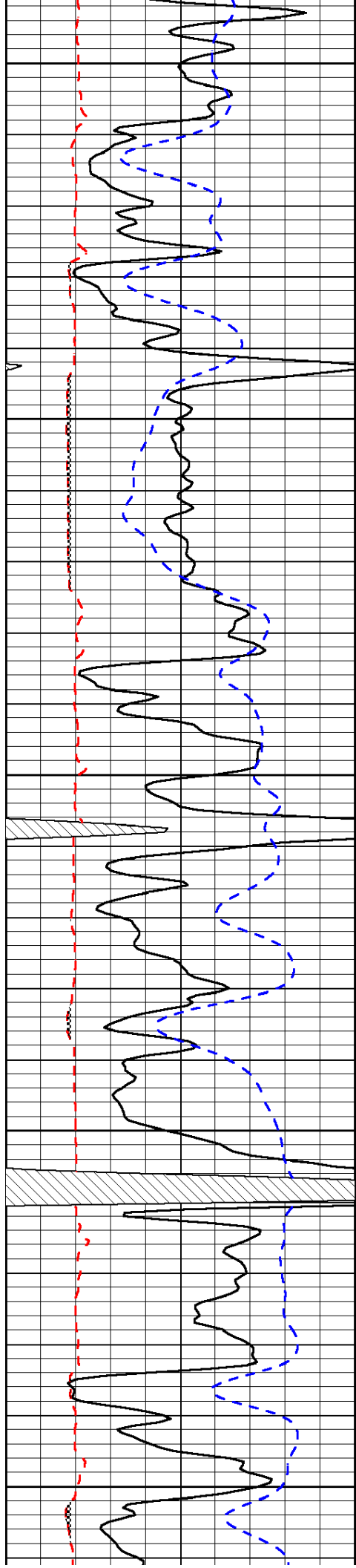
Database File: c:\warrior\data\bach_brands unit no. 1\bach_brandsunit_1hd.db
 Dataset Pathname: dil/bachstck
 Presentation Format: micro
 Dataset Creation: Sat Mar 10 12:41:17 2012
 Charted by: Depth in Feet scaled 1:240

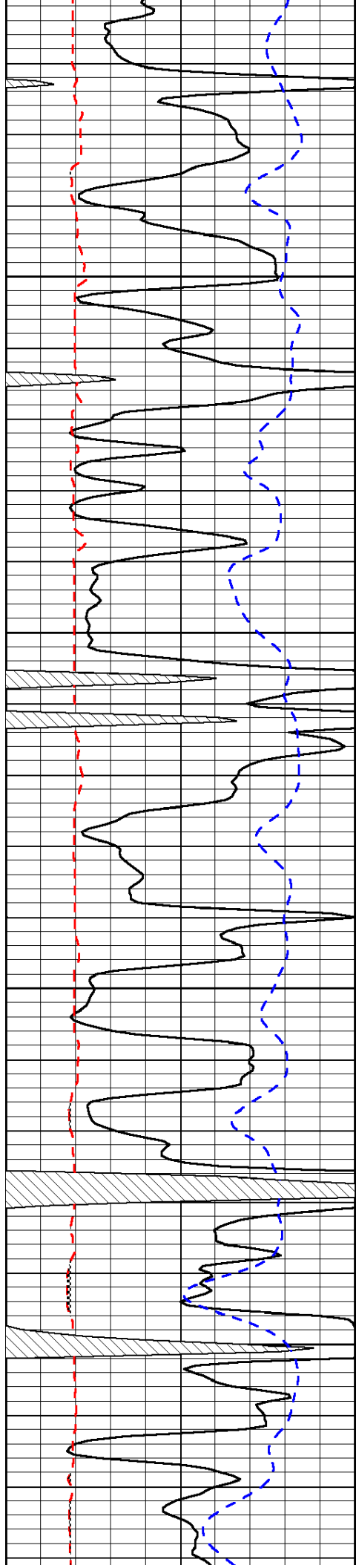
0	Gamma Ray	150
6	Micro Log Caliper (GAPI)	16
-200	SP (mV)	0

0	Micro Inverse 1 X 1	40
0	Micro Normal 2"	40
15000	Line Weight	0

LSPD





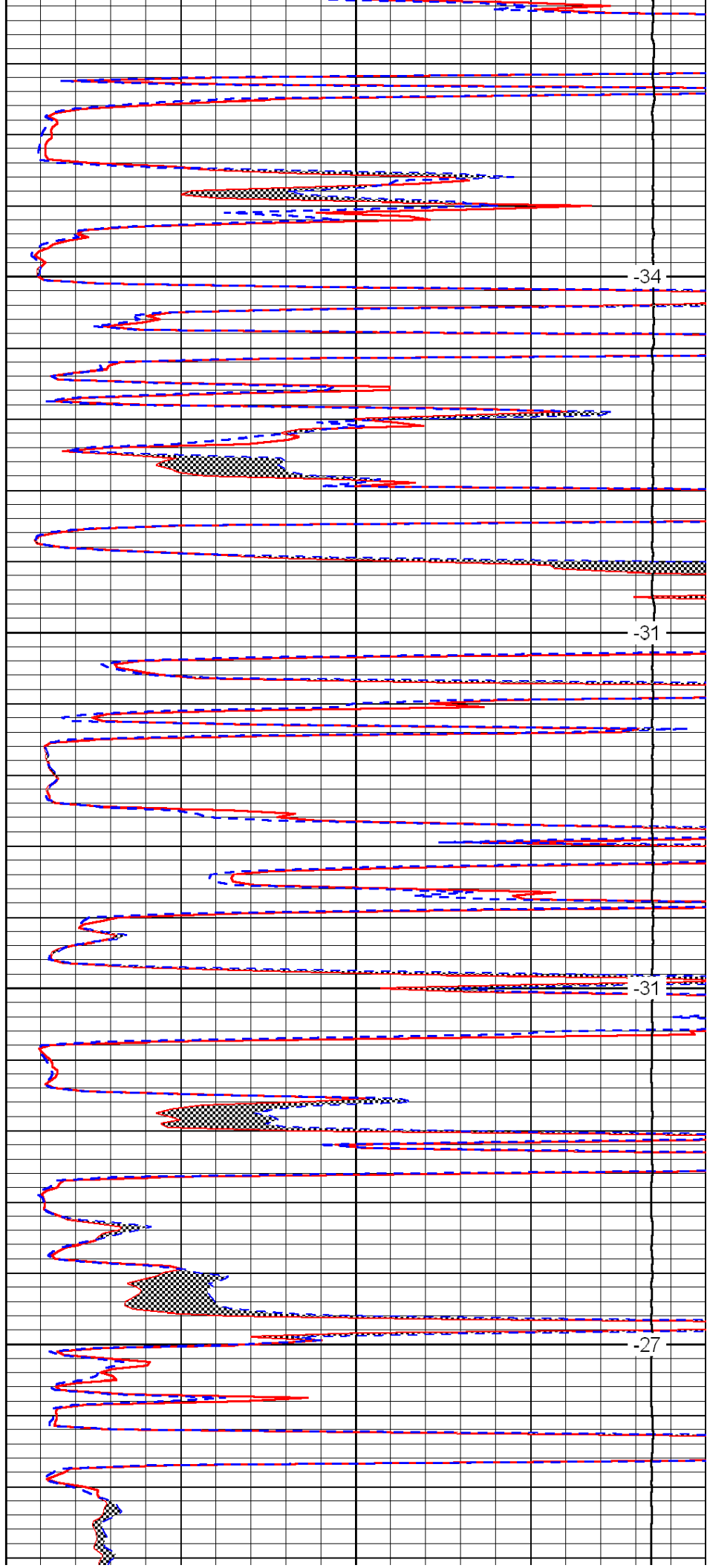


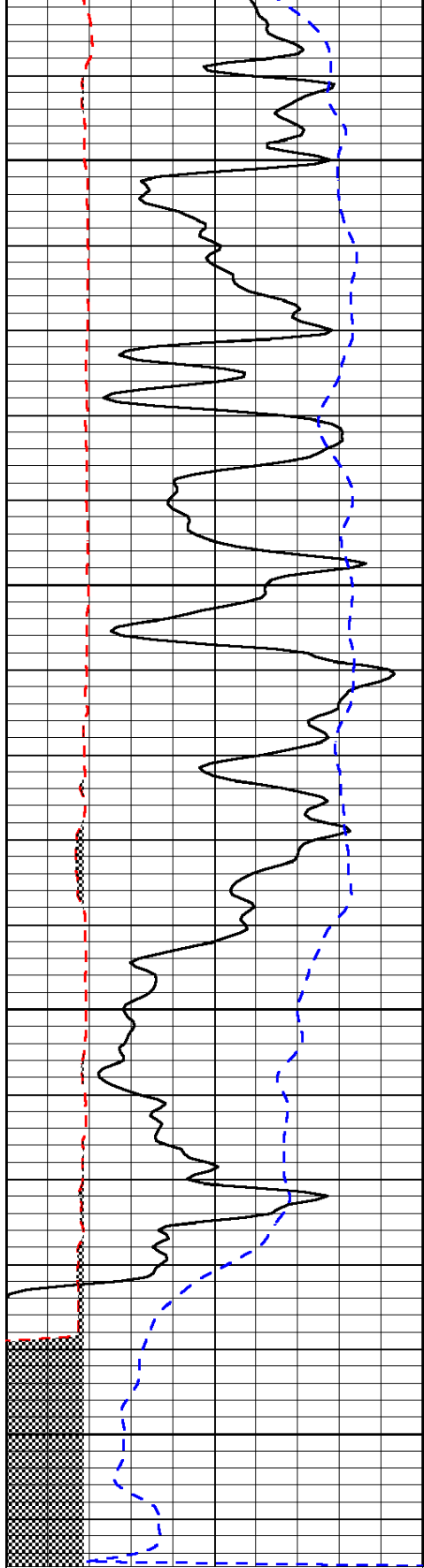
3450

3500

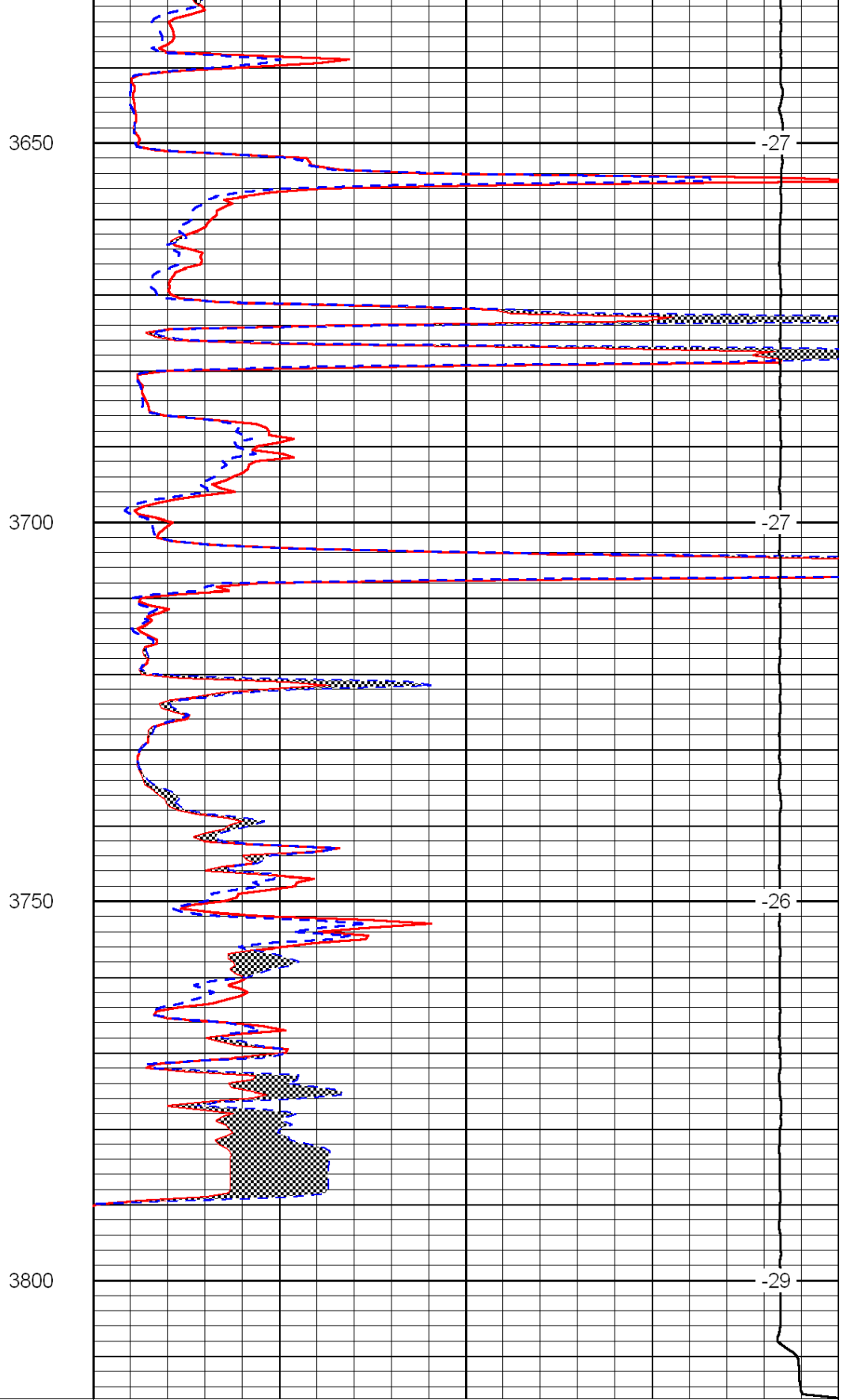
3550

3600





0	Gamma Ray	150
6	Micro Log Caliper (GAPI)	16
-200	SP (mV)	0



0	Micro Inverse 1 X 1	40
0	Micro Normal 2''	40
15000	Line Weight	0

LSPD