



Dual Compensated Porosity Log

DIGITAL LOG (785) 625-3858

15-147-20,668-00-00

API No.			
Company	Bach Oil Production		
Well	Brands Unit No. 1		
Field	Wildcat		
County	Phillips		
State	Kansas		
Location	SE SW SE SE 160' FSL & 830' FEL		
Sec: 4	Twp: 2S	Rge: 19W	Other Services DIL MEL/BHCS
Permanent Datum	Ground Level	Elevation 2203	Elevation
Log Measured From	Kelly Bushing	5 Ft. Above Perm. Datum	K.B. 2208
Drilling Measured From	Kelly Bushing		D.F. G.L. 2203
Date	3/10/2012		

Run Number	One
Type Log	CNL / CDL
Depth Driller	3809
Depth Logger	3809
Bottom Logged Interval	3788
Top Logged Interval	3000
Type Fluid In Hole	Chemical
Salinity, PPM CL	800
Density	8.8
Level	Full
Max. Rec. Temp. F	114
Operating Rig Time	4 1/2 Hours
Equipment -- Location	10 Hays
Recorded By	J. Long
Witnessed By	Bob Petersen

Borehole Record				Casing Record			
Run No.	Bit	From	To	Size	Wgt.	From	To
1	12.25	00	227	8.625	24#	00	227
2	7.875	227	3809				

<<< Fold Here >>>

All interpretations are opinions based on inferences from electrical or other measurements and we cannot and do not guarantee the accuracy or correctness of any interpretation, and we shall not, except in the case of gross or willful negligence on our part, be liable or responsible for any loss, costs, damages, or expenses incurred or sustained by anyone resulting from any interpretation made by any of our officers, agents or employees. These interpretations are also subject to our general terms and conditions set out in our current Price Schedule.

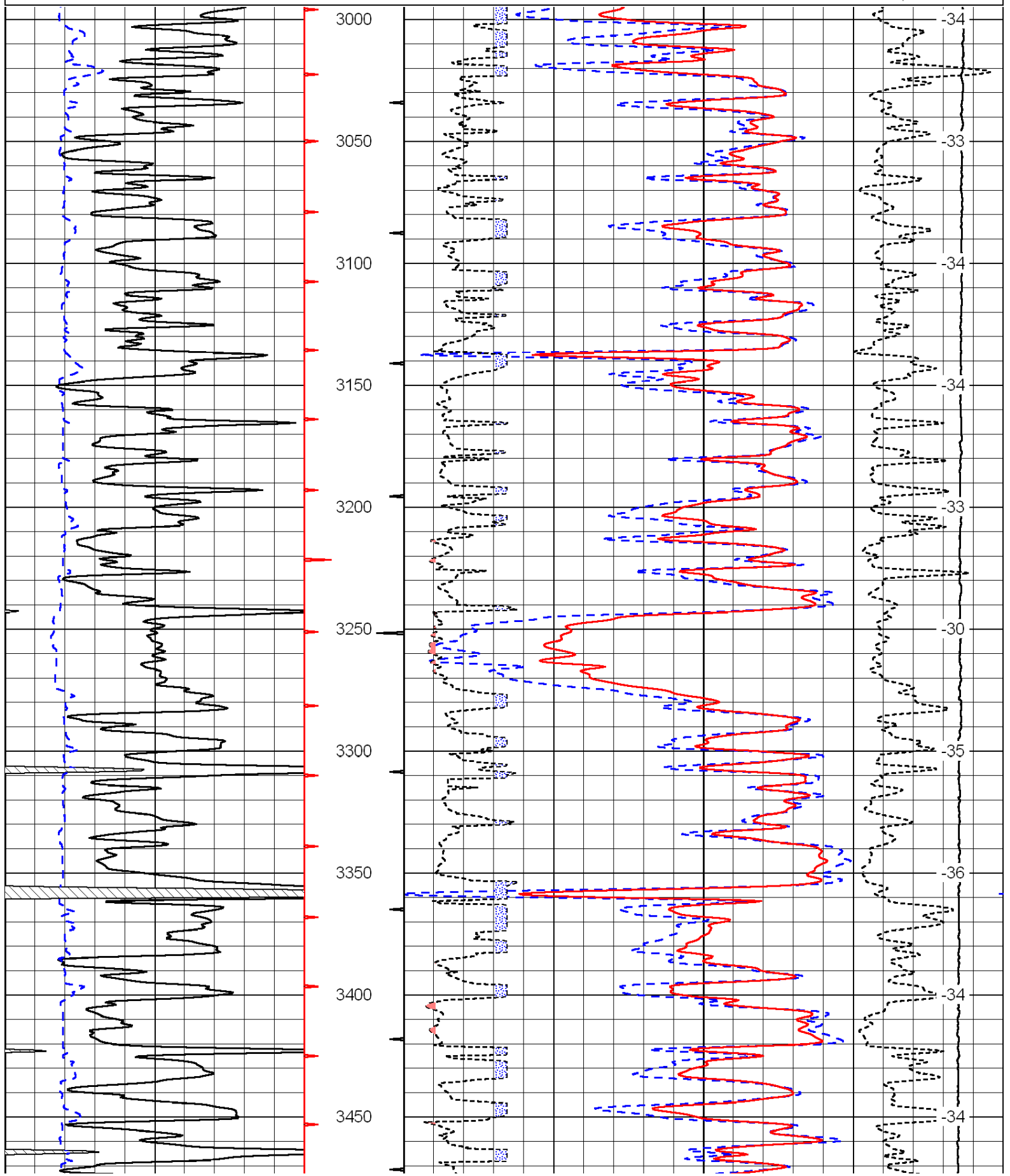
Comments

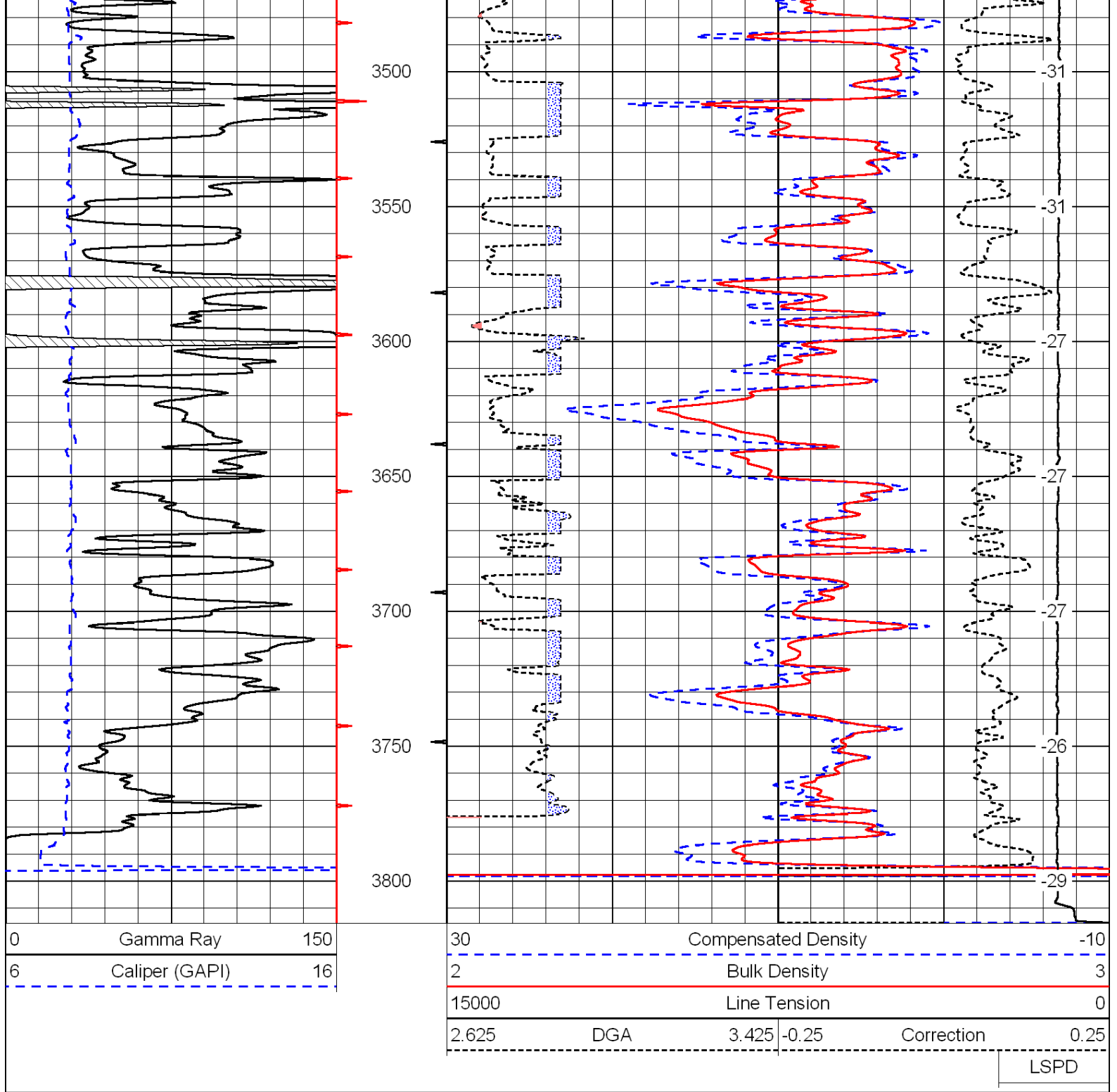
Thank you for using Log-Tech, Inc.
(785) 625-3858

Phillipsburg, 10 North to Hunter Road, 7 1/4 West, North Into

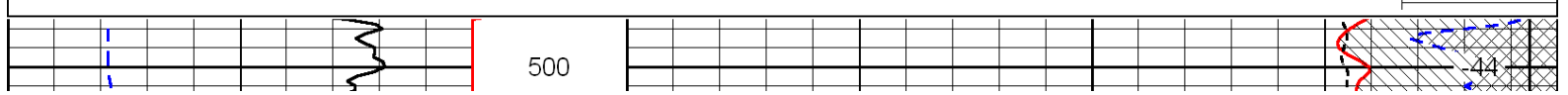
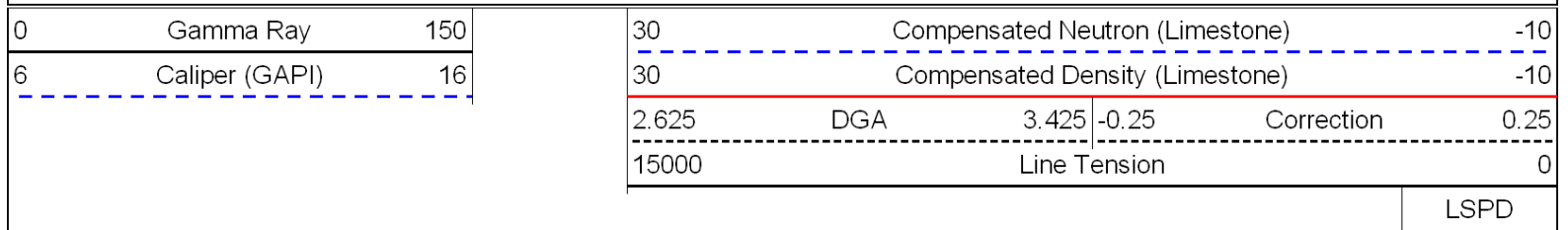
0	Gamma Ray	150
6	Caliper (GAPI)	16

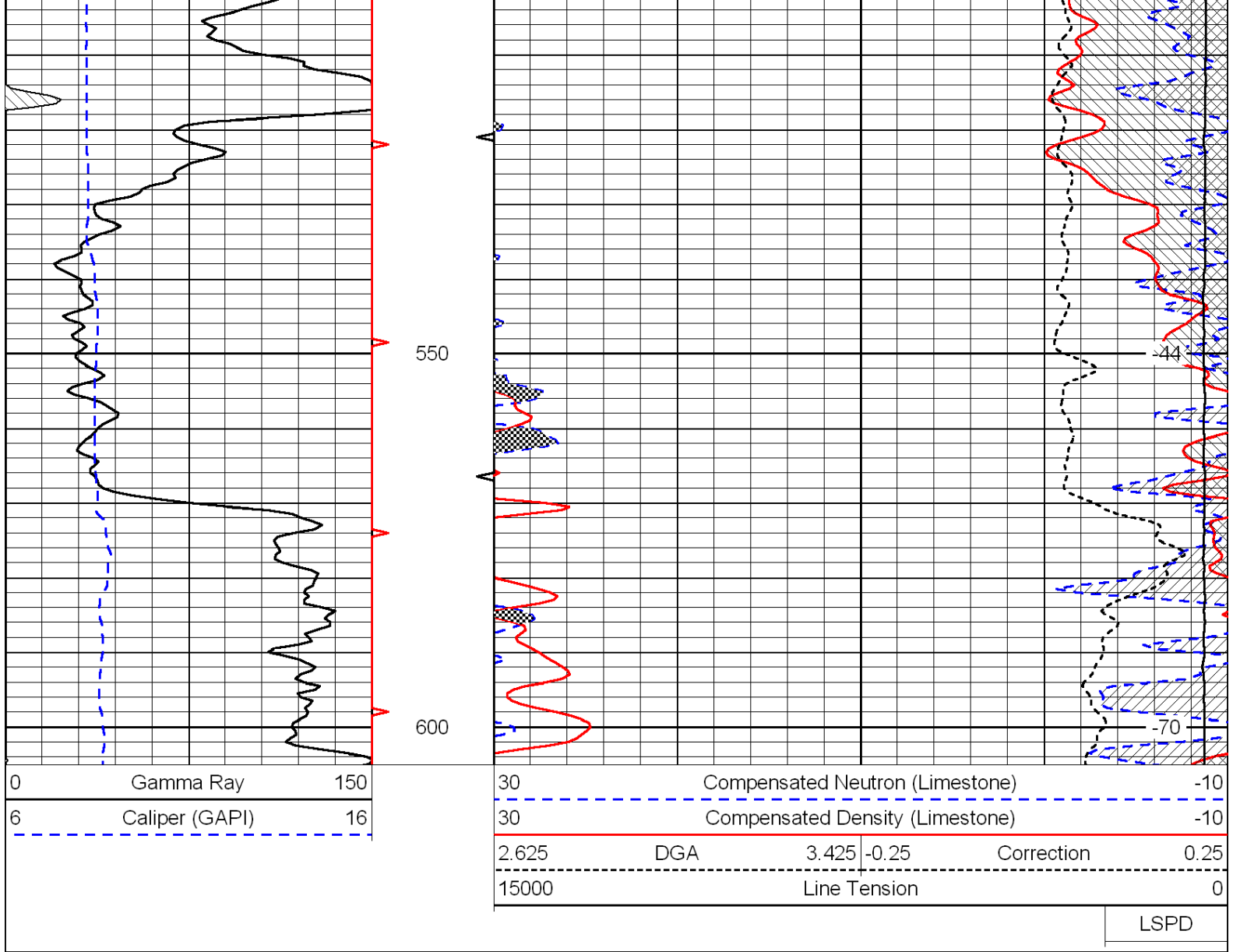
30	Compensated Density		-10
2	Bulk Density		3
15000	Line Tension		0
2.625	DGA	3.425	-0.25
Correction			0.25
LSPD			





Database File: c:\warrior\data\bach_brands unit no. 1\bach_brandsunit_1hd.db
 Dataset Pathname: dil/bachstck
 Presentation Format: cndlspec
 Dataset Creation: Sat Mar 10 12:41:17 2012
 Charted by: Depth in Feet scaled 1:240





Database File: c:\warrior\data\bach_brands unit no. 1\bach_brandsunit_1hd.db
 Dataset Pathname: dil/bachstck
 Presentation Format: cndlspec
 Dataset Creation: Sat Mar 10 12:41:17 2012
 Charted by: Depth in Feet scaled 1:240

