



DIGITAL LOG (785) 625-3858

Microresistivity Log

15-171-20,875-00-00

API No.

Company New Gulf Energy, LLC

Well KRUG No.1-28

Field N/A

County Scott State Kansas

Location 1162' FSL & 2120' FWL

Sec: 28 Twp: 17S Rge: 34W

Permanent Datum Ground Level Elevation 3134

Log Measured From Kelly Bushing 10 Ft. Above Perm. Datum

Drilling Measured From Kelly Bushing

Other Services
CNL/CDL
DIL
Elevation
K.B. 3144
D.F.
G.L. 3134

Date	5/9/2012
Run Number	Two
Depth Driller	5110
Depth Logger	5110
Bottom Logged Interval	5109
Top Log Interval	3500
Casing Driller	8.625 @ 256
Casing Logger	254
Bit Size	7.875
Type Fluid in Hole	Chemical
Salinity,ppm CL	5.800
Density / Viscosity	9.0 58
pH / Fluid Loss	10.5 8.8
Source of Sample	Flowline
Rm @ Meas. Temp	.58 @ 66
Rmf @ Meas. Temp	.44 @ 66
Rmc @ Meas. Temp	.78 @ 66
Source of Rmf / Rmc	Charts
Rm @ BHT	.3 @ 127
Operating Rig Time	4 1/2 Hours
Max Rec. Temp. F	127
Equipment Number	17
Location	Hays
Recorded By	C. Desaire
Witnessed By	Danny Birdwell

<<< Fold Here >>>

All interpretations are opinions based on inferences from electrical or other measurements and we cannot and do not guarantee the accuracy or correctness of any interpretation, and we shall not, except in the case of gross or willful negligence on our part, be liable or responsible for any loss, costs, damages, or expenses incurred or sustained by anyone resulting from any interpretation made by any of our officers, agents or employees. These interpretations are also subject to our general terms and conditions set out in our current Price Schedule.

Comments

Thank you for using Log-Tech, Inc.
(785) 625-3858

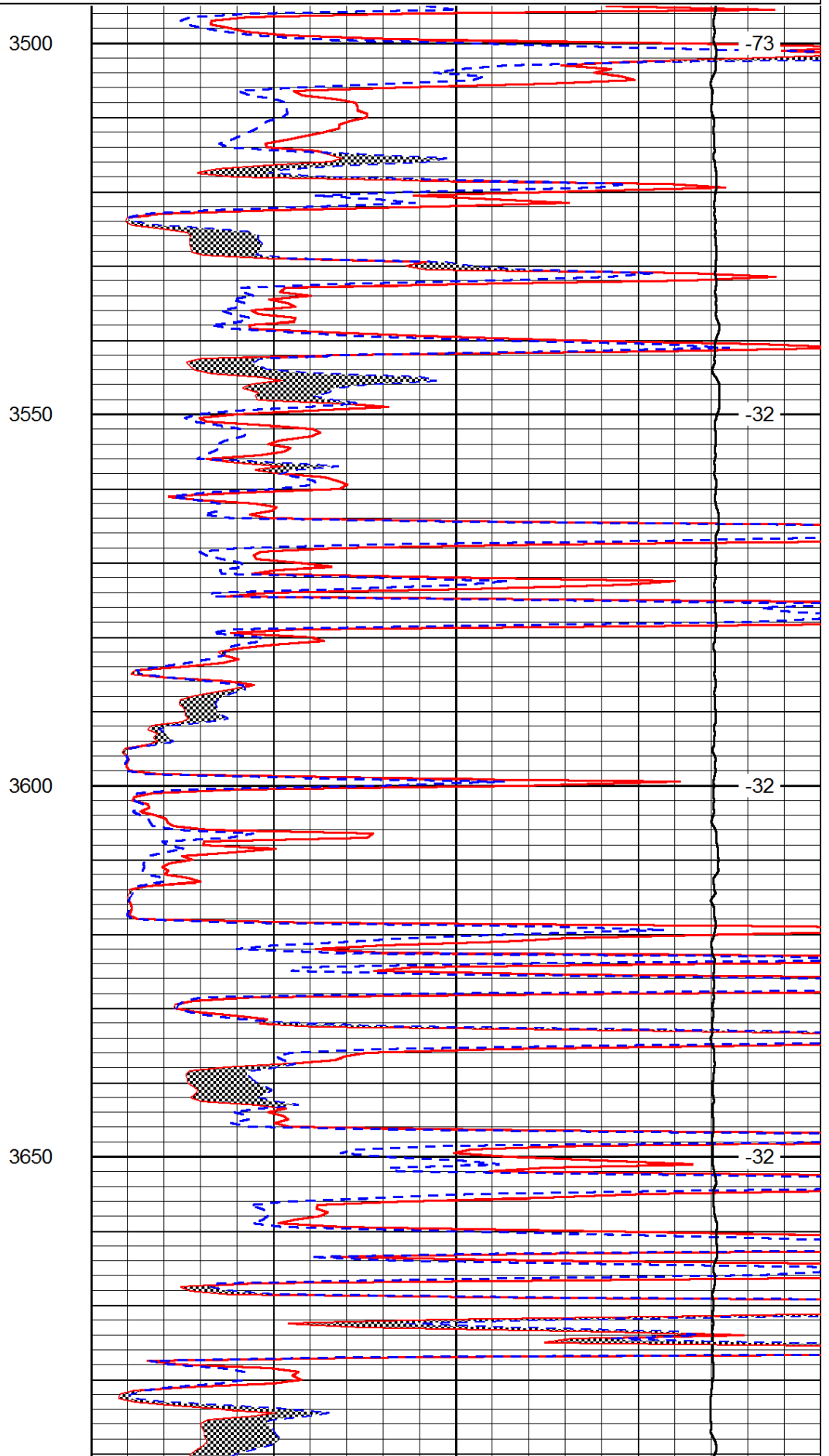
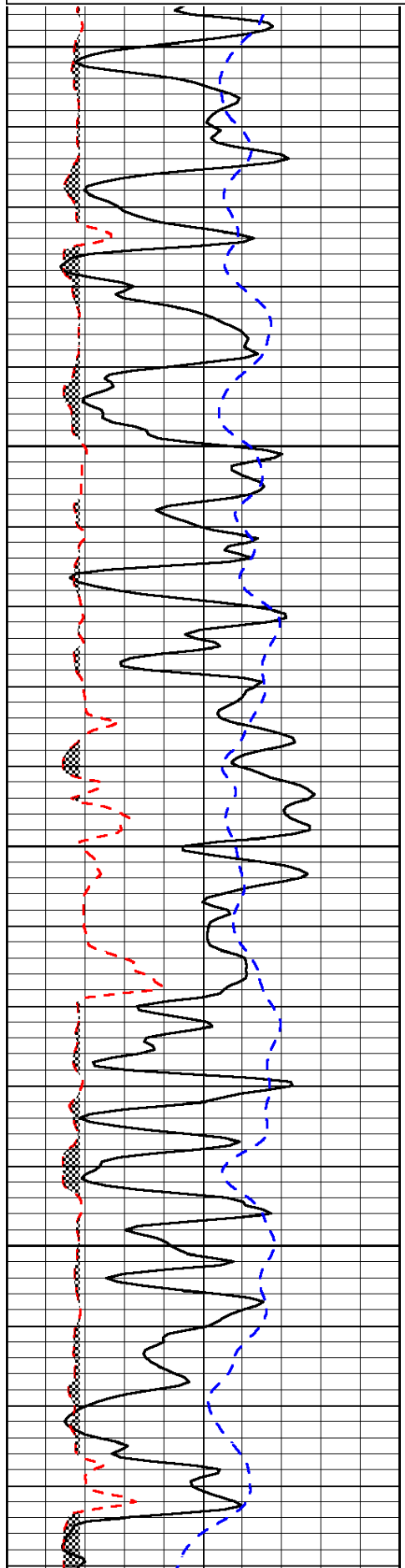
Modoc KS, N to T, 1/2 E,
3 N, 1/2 W, N Into

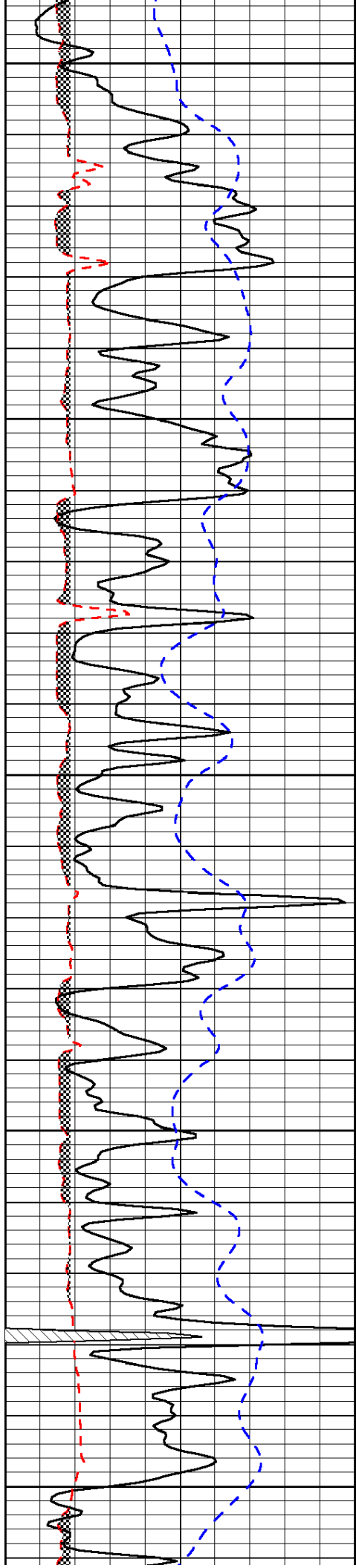
Database File: c:\warrior\data\new gulf_krug no.1-28\nghd.db
 Dataset Pathname: dil/ngstk
 Presentation Format: micro
 Dataset Creation: Thu May 10 02:28:38 2012
 Charted by: Depth in Feet scaled 1:240

0	Gamma Ray	150
6	Micro Log Caliper (GAPI)	16
-200	SP (mV)	0

0	Micro Inverse 1 X 1	40
0	Micro Normal 2"	40
15000	Line Weight	0

LSPD





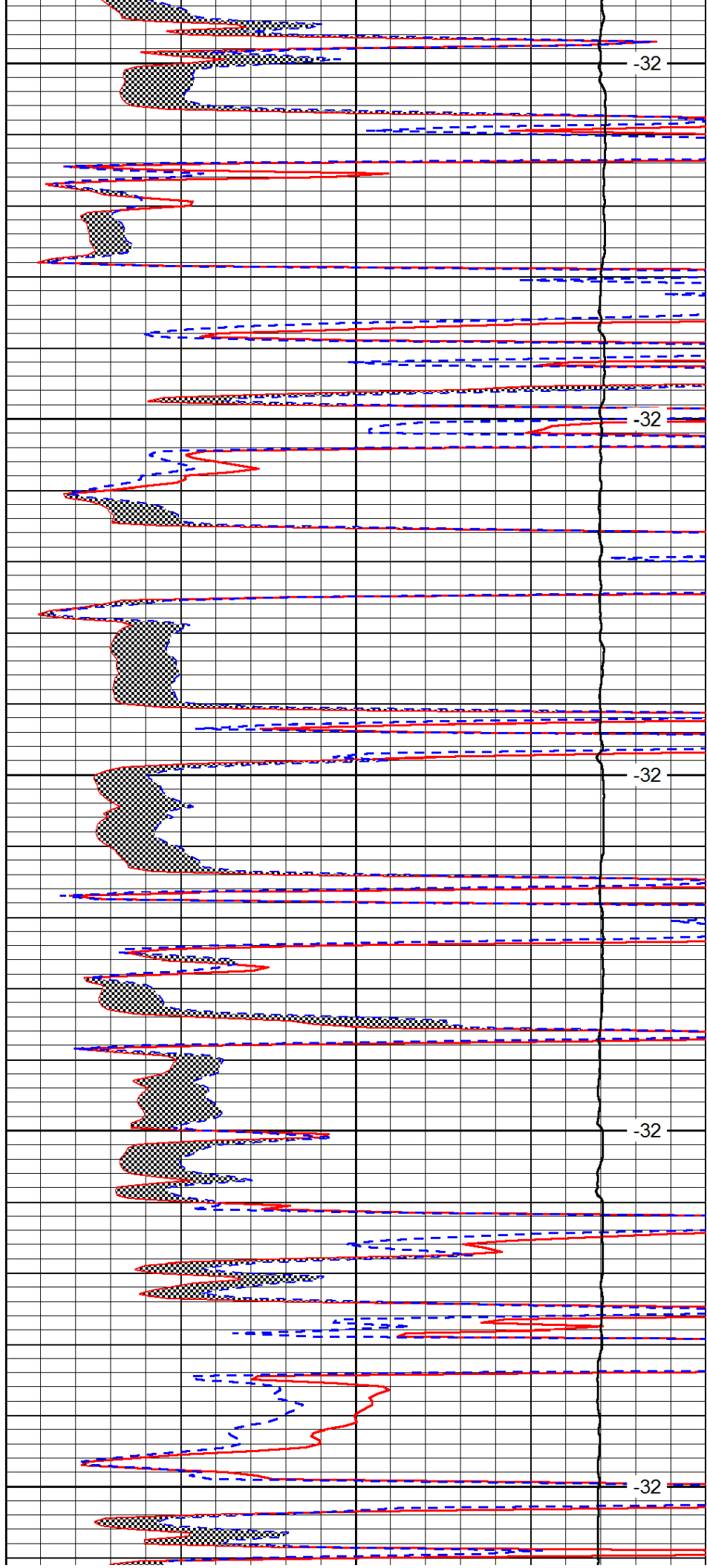
3700

3750

3800

3850

3900



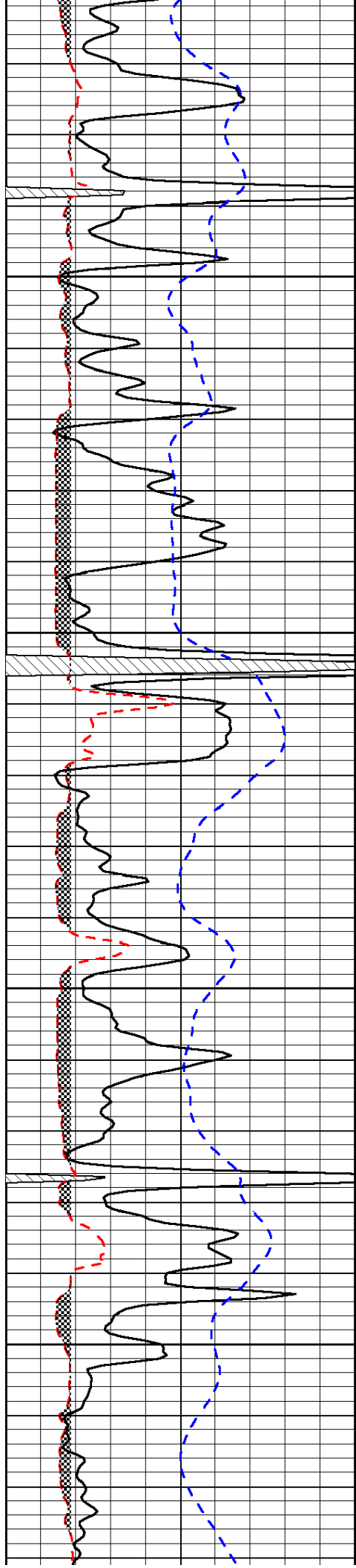
-32

-32

-32

-32

-32

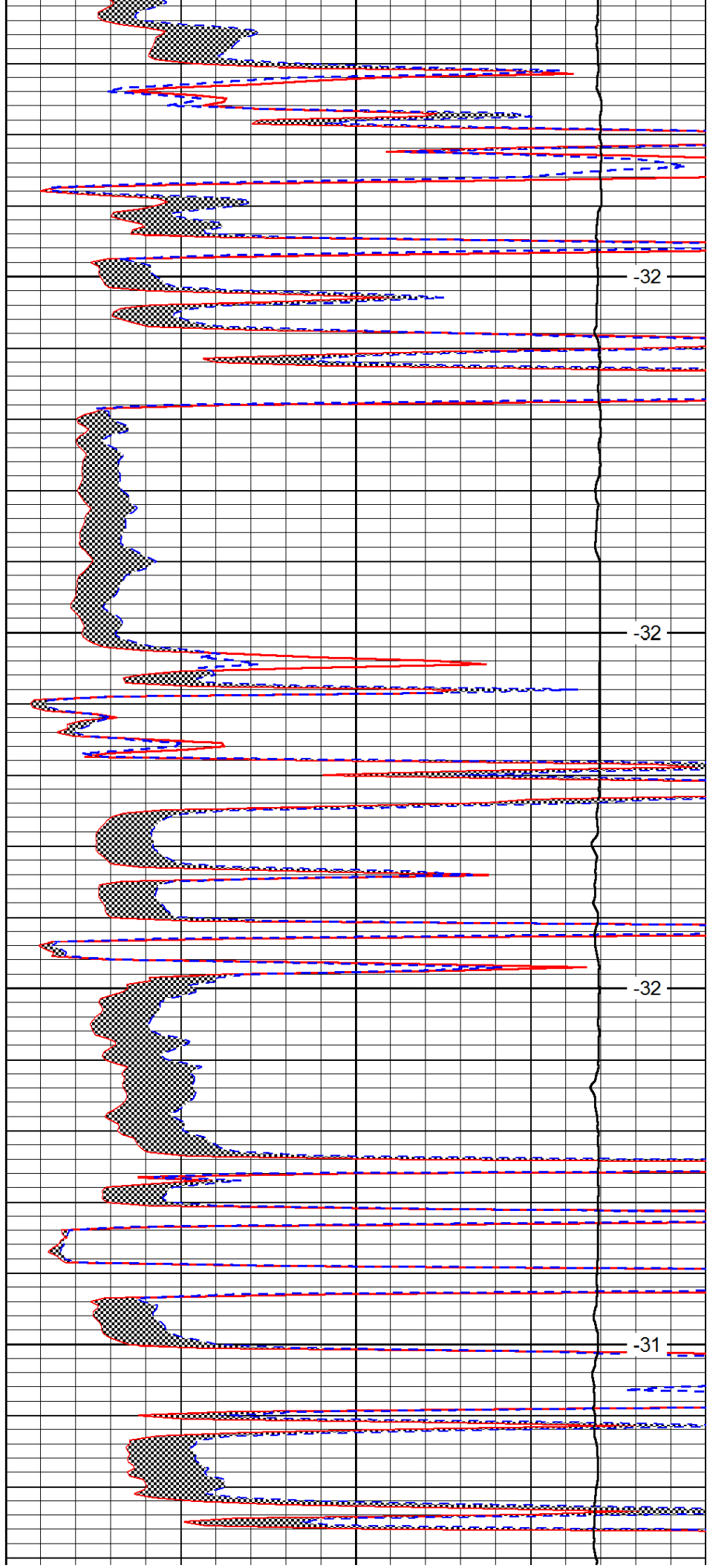


3950

4000

4050

4100

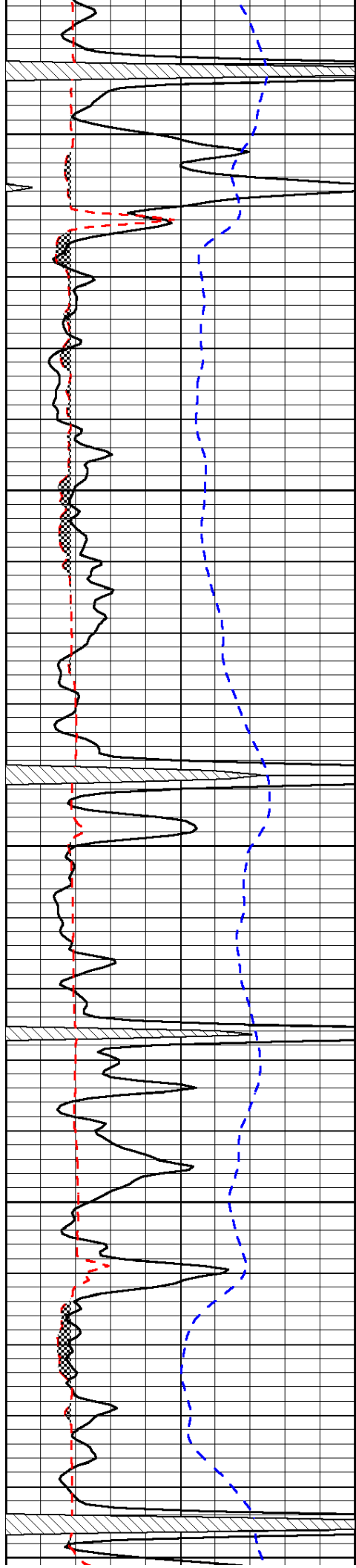


-32

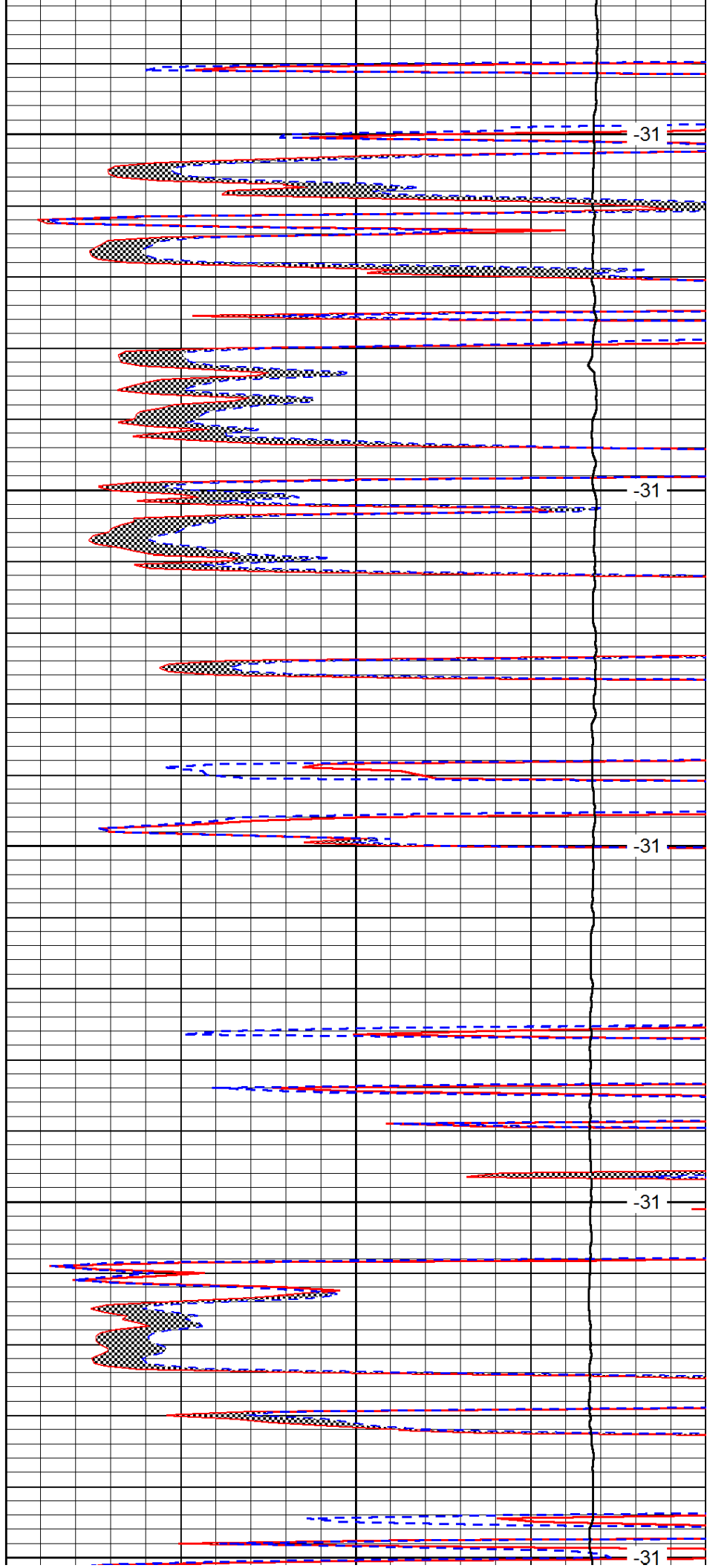
-32

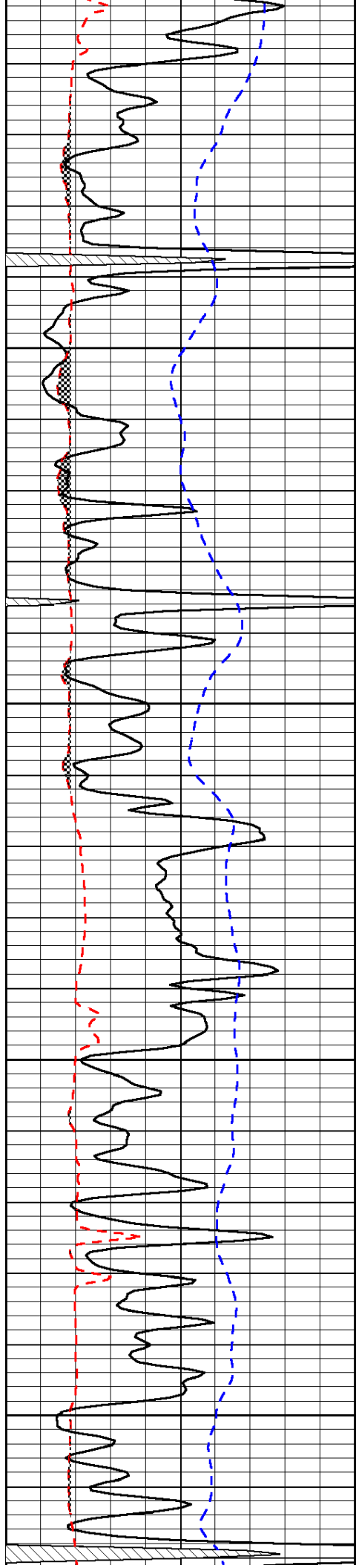
-32

-31



4150
4200
4250
4300
4350



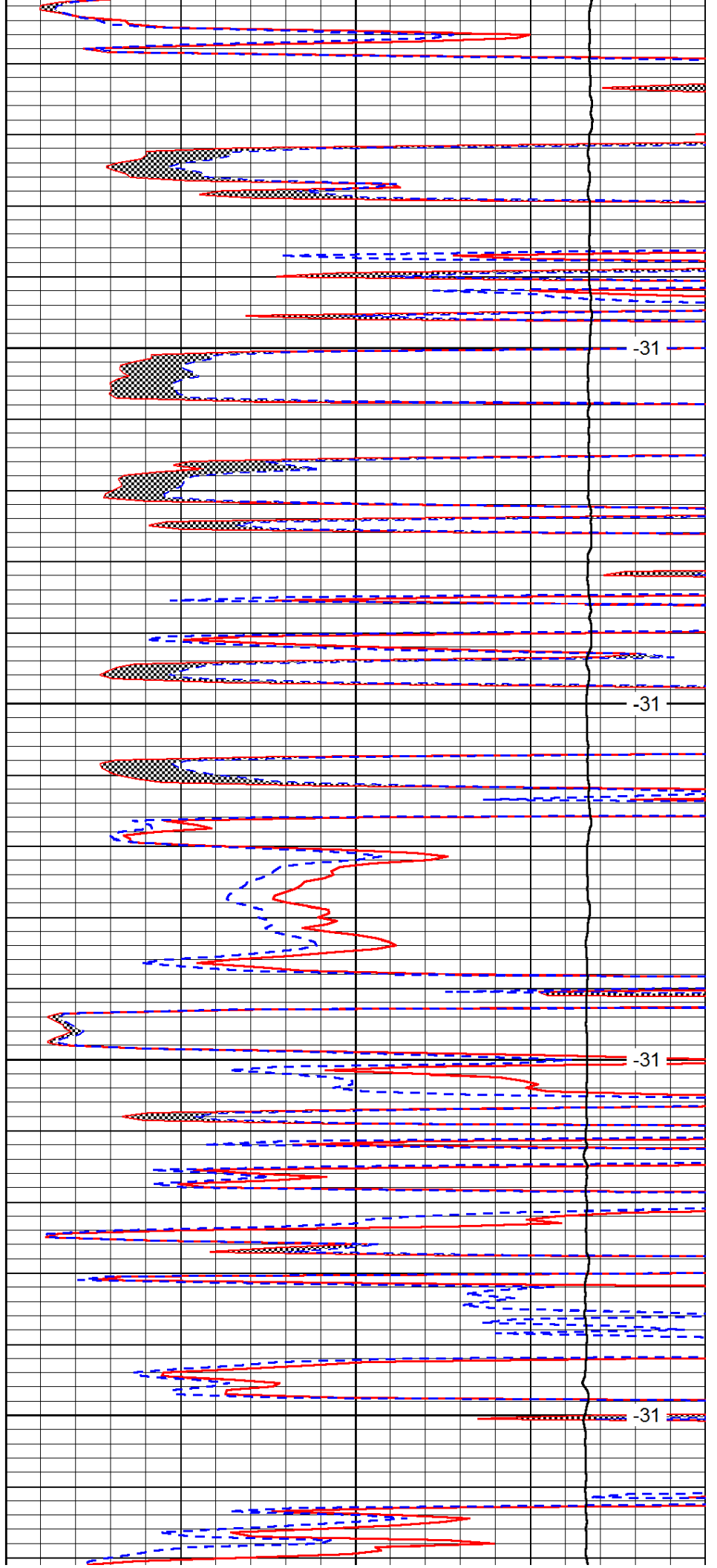


4400

4450

4500

4550

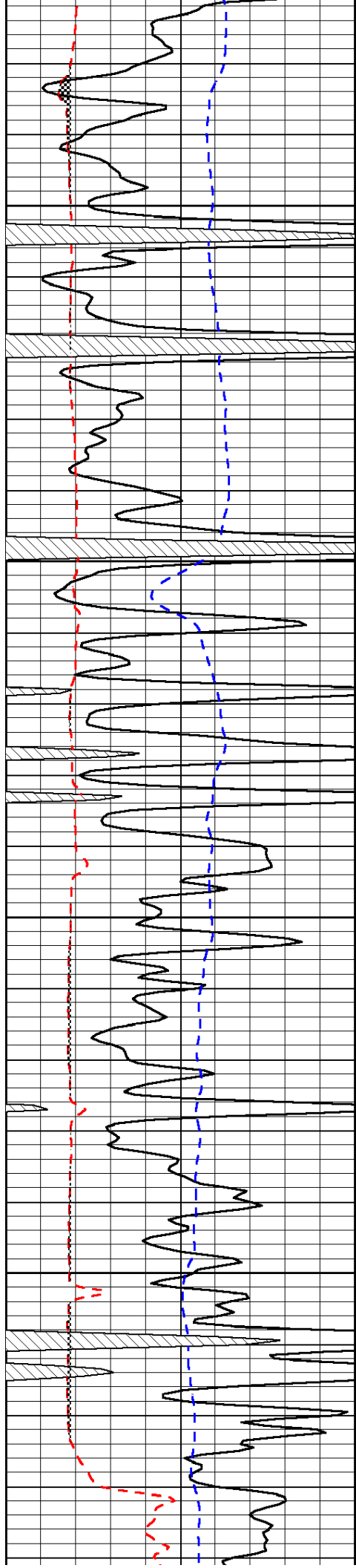


-31

-31

-31

-31

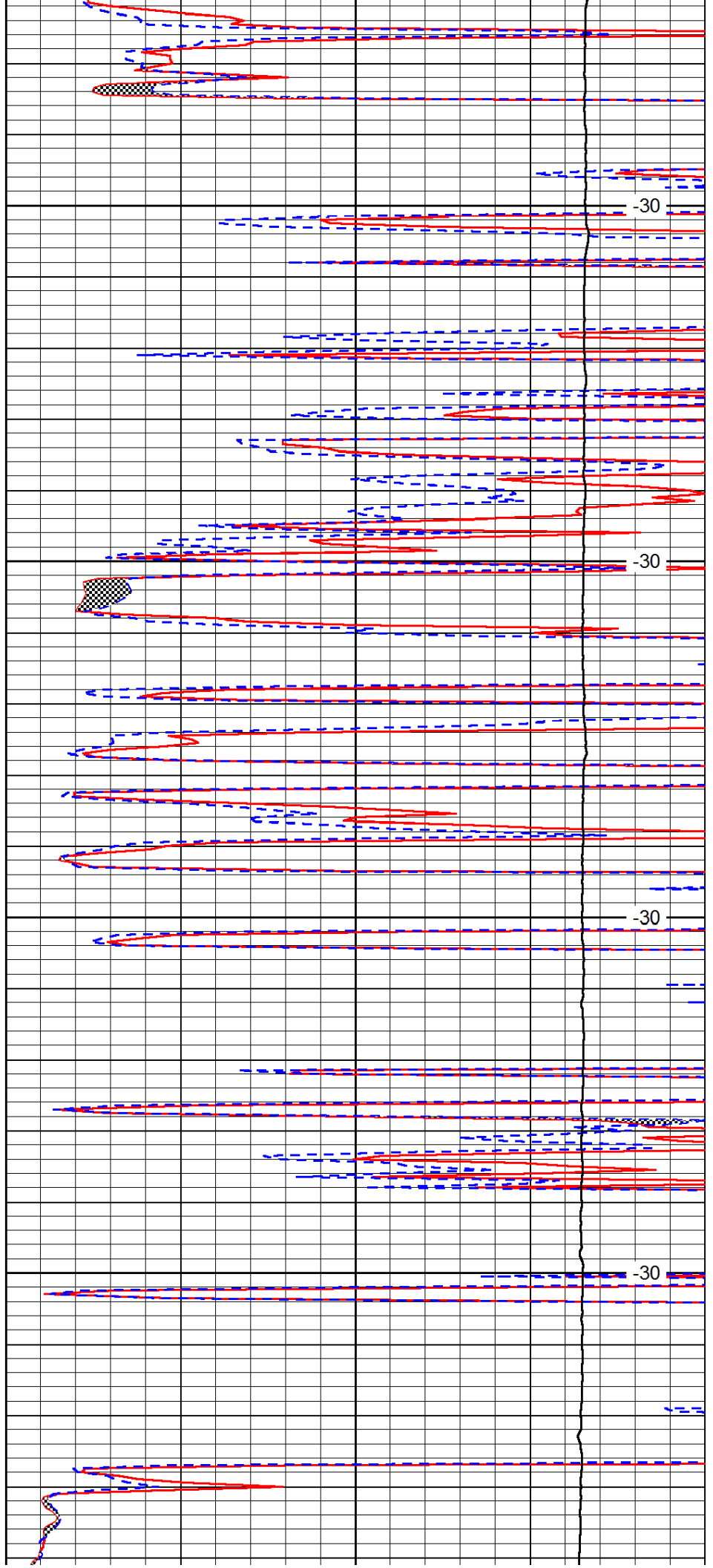


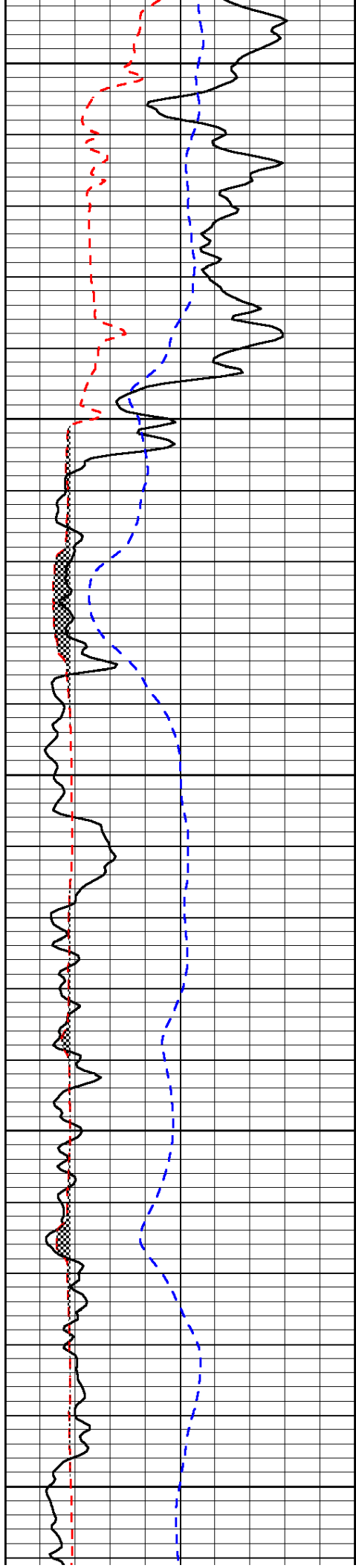
4600

4650

4700

4750





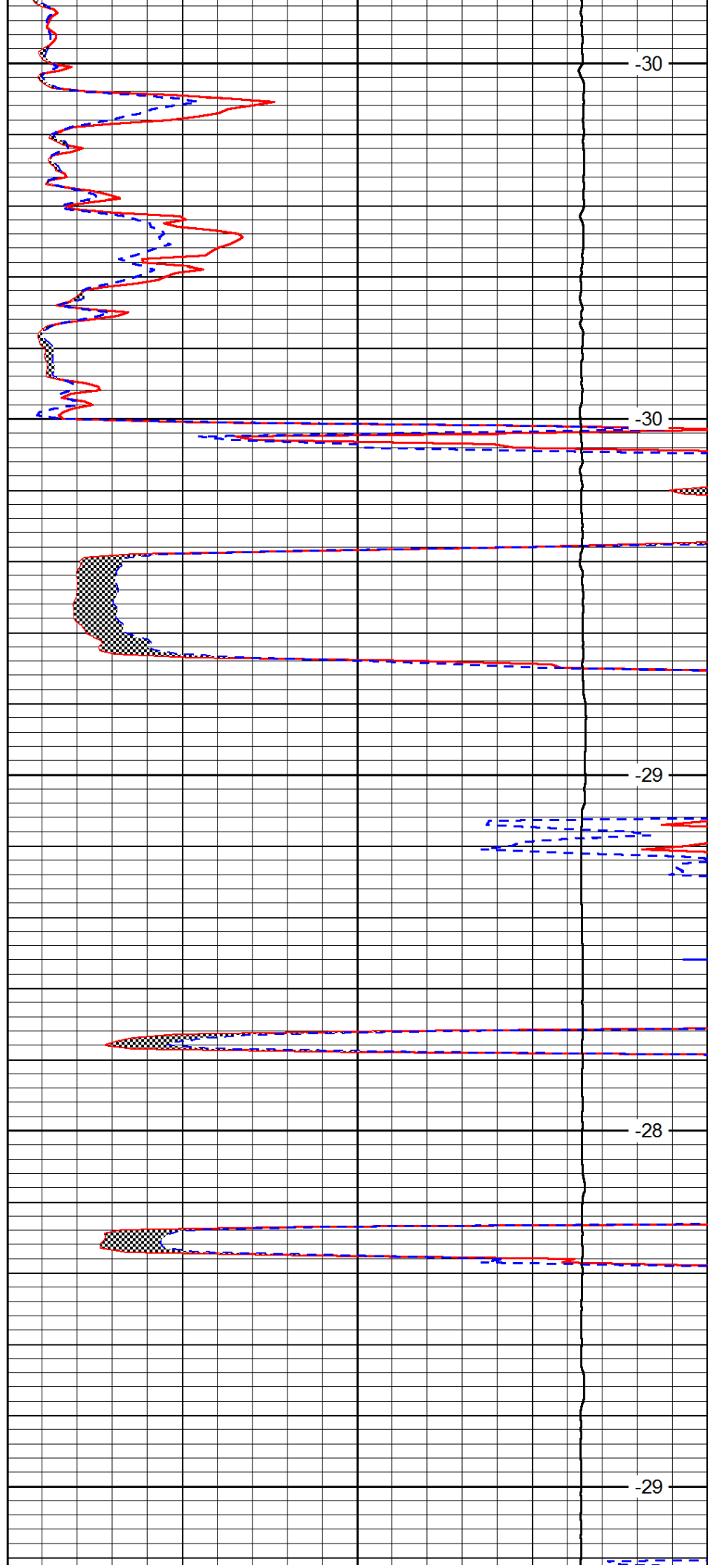
4800

4850

4900

4950

5000



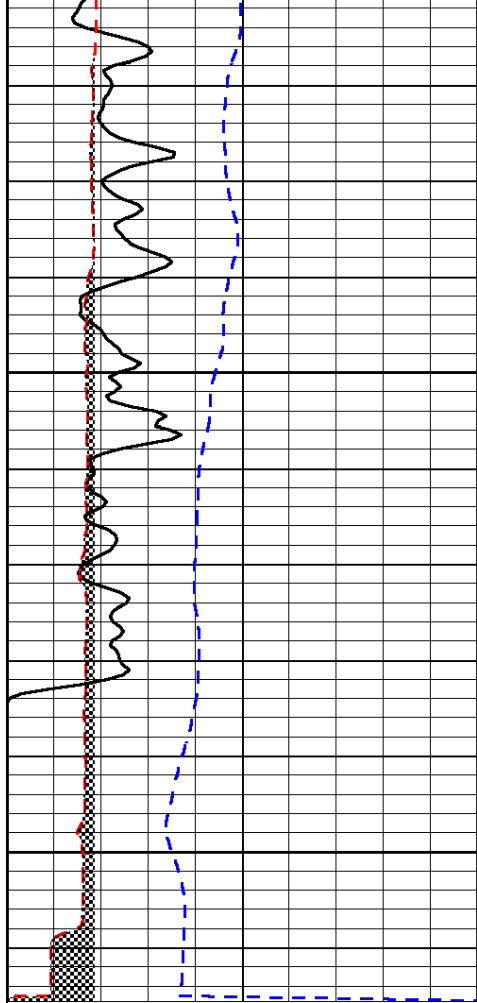
-30

-30

-29

-28

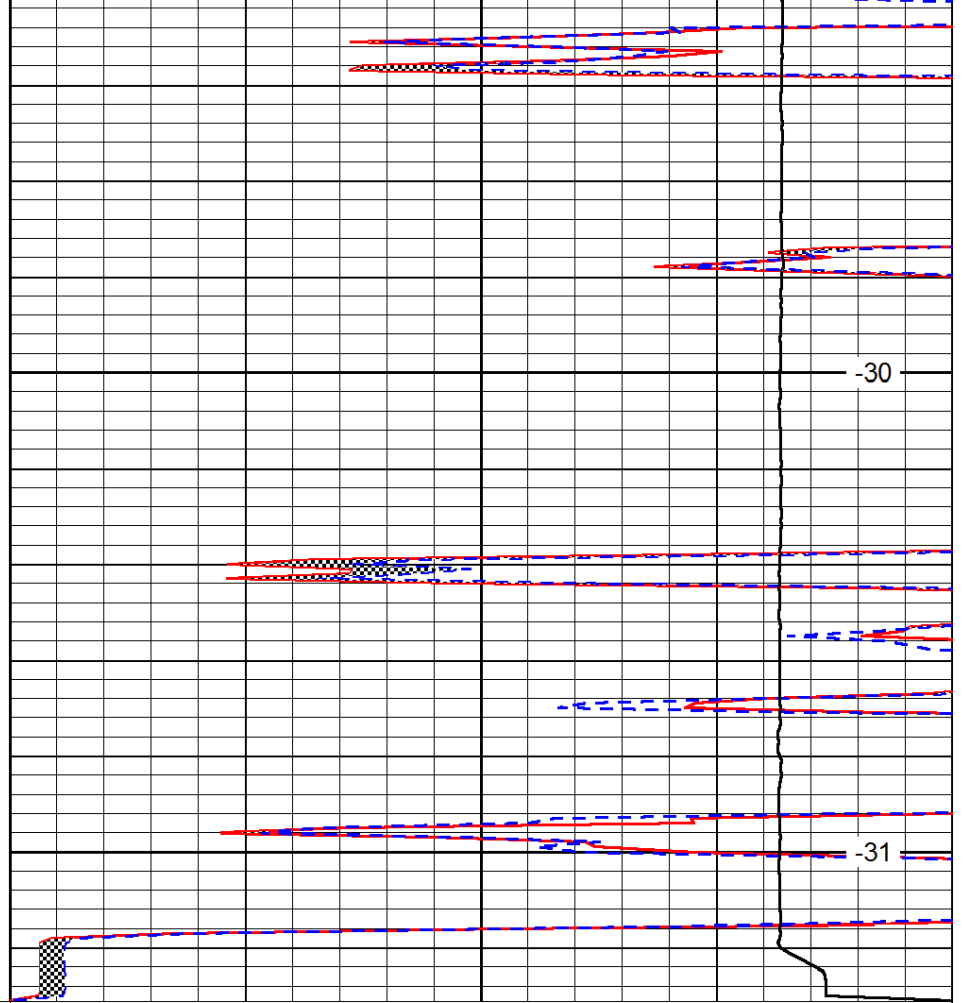
-29



0	Gamma Ray	150
6	Micro Log Caliper (GAPI)	16
-200	SP (mV)	0

5050

5100



0	Micro Inverse 1 X 1	40
0	Micro Normal 2''	40
15000	Line Weight	0

LSPD