



DIGITAL LOG (785) 625-3858

Dual Induction Log

15-171-20,875-00-00

API No.

Company New Gulf Energy, LLC

Well KRUG No.1-28

Field N/A

County Scott

State

Kansas

Location

1162' FSL & 2120' FWL

Other Services  
CNL/CDL  
MEL

Sec: 28 Twp: 17S Rge: 34W

Permanent Datum Ground Level Elevation 3134  
Log Measured From Kelly Bushing 10 Ft. Above Perm. Datum  
Drilling Measured From Kelly Bushing

Elevation

K.B. 3144

D.F. 3134

G.L. 3134

Date 5/9/2012

Run Number One

Depth Driller 5110

Depth Logger 5110

Bottom Logged Interval 5109

Top Log Interval 250

Casing Driller 8.625 @ 256

Casing Logger 254

Bit Size 7.875

Type Fluid in Hole Chemical

Salinity,ppm CL 5.800

Density / Viscosity 9.0 58

pH / Fluid Loss 10.5 8.8

Source of Sample Flowline

Rm @ Meas. Temp .58 @ 66

Rmf @ Meas. Temp .44 @ 66

Rmc @ Meas. Temp .78 @ 66

Source of Rmf / Rmc Charts

Rm @ BHT .3 @ 127

Operating Rig Time 4 1/2 Hours

Max Rec. Temp. F 127

Equipment Number 17

Location Hays

Recorded By C. Desaire

Witnessed By Danny Birdwell

<<< Fold Here >>>

All interpretations are opinions based on inferences from electrical or other measurements and we cannot and do not guarantee the accuracy or correctness of any interpretation, and we shall not, except in the case of gross or willful negligence on our part, be liable or responsible for any loss, costs, damages, or expenses incurred or sustained by anyone resulting from any interpretation made by any of our officers, agents or employees. These interpretations are also subject to our general terms and conditions set out in our current Price Schedule.

Comments

Thank you for using Log-Tech, Inc.  
(785) 625-3858

Modoc KS, N to T, 1/2 E,  
3 N, 1/2 W, N Into

Database File: c:\warrior\data\new gulf\_krug no.1-28\nghd.db  
Dataset Pathname: dil/ngstk  
Presentation Format: dil2in  
Dataset Creation: Thu May 10 02:28:38 2012  
Charted by: Depth in Feet scaled 1:600

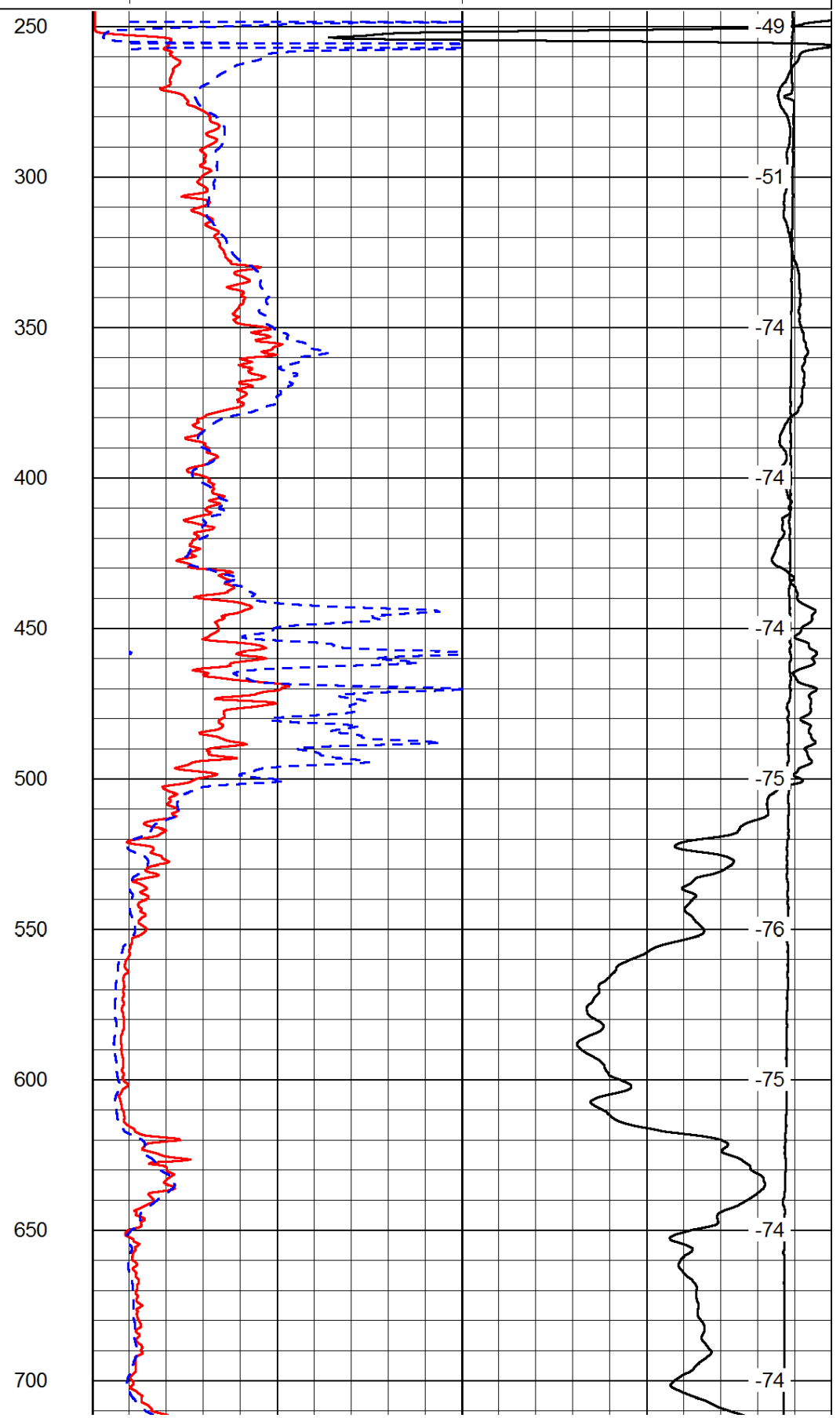
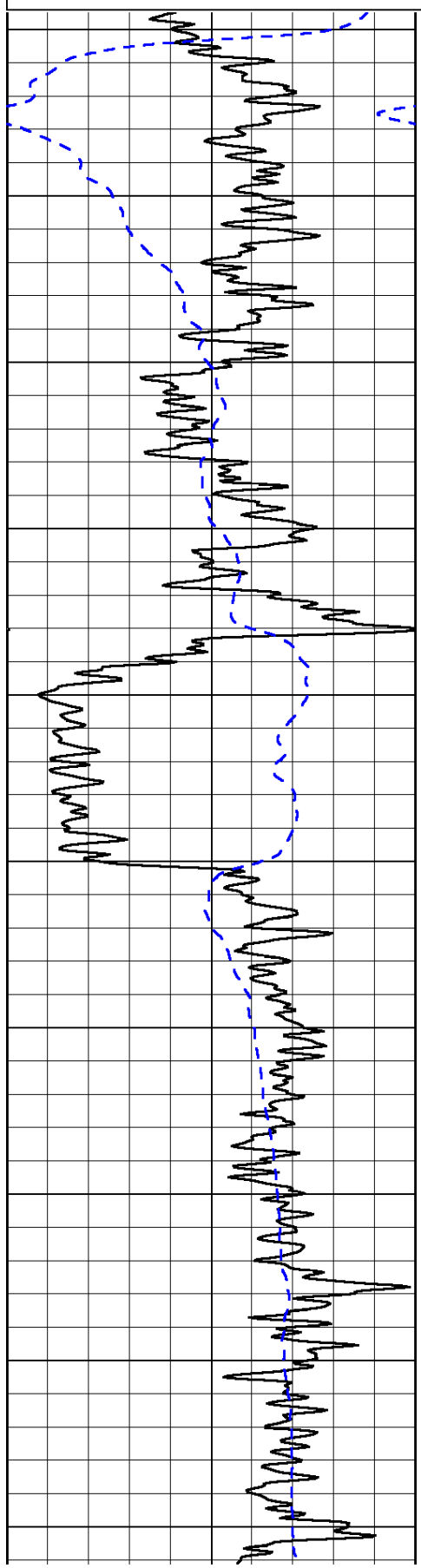
0	Gamma Ray	150
-200	SP (mV)	0

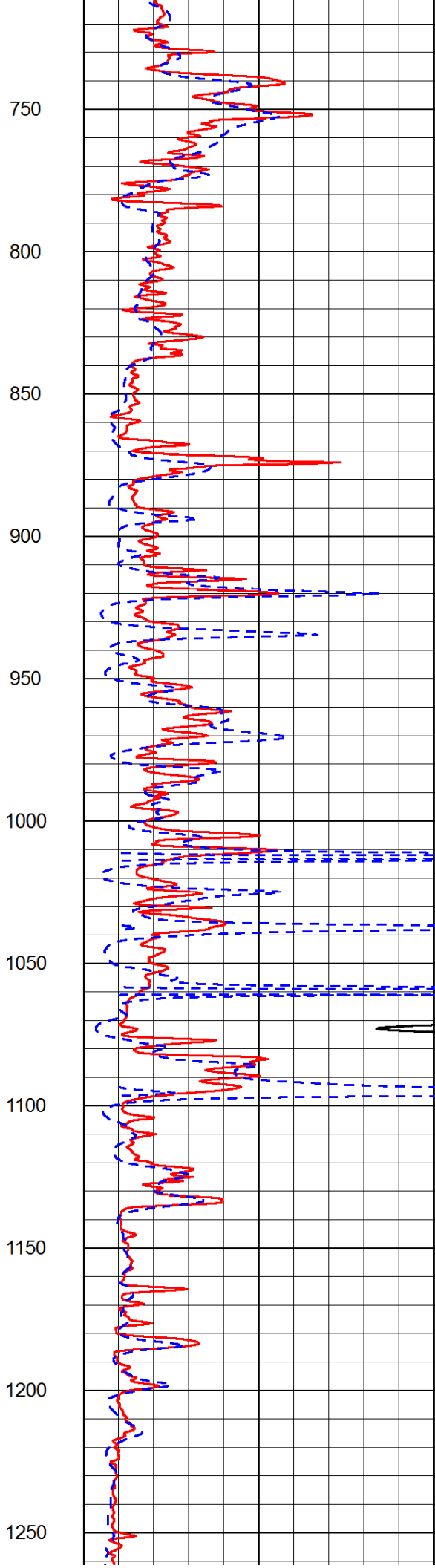
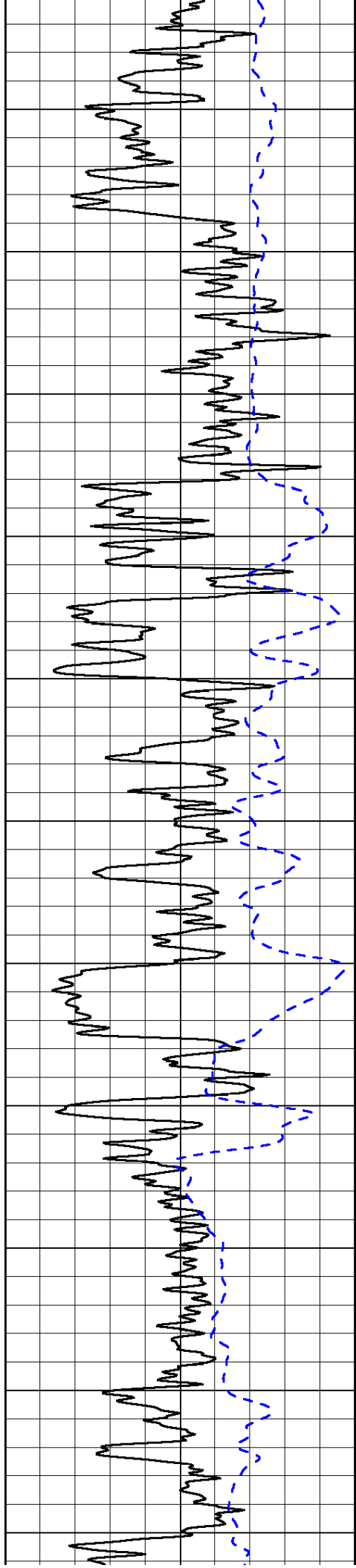
0	Shallow Resistivity	50
0	Deep Resistivity	50

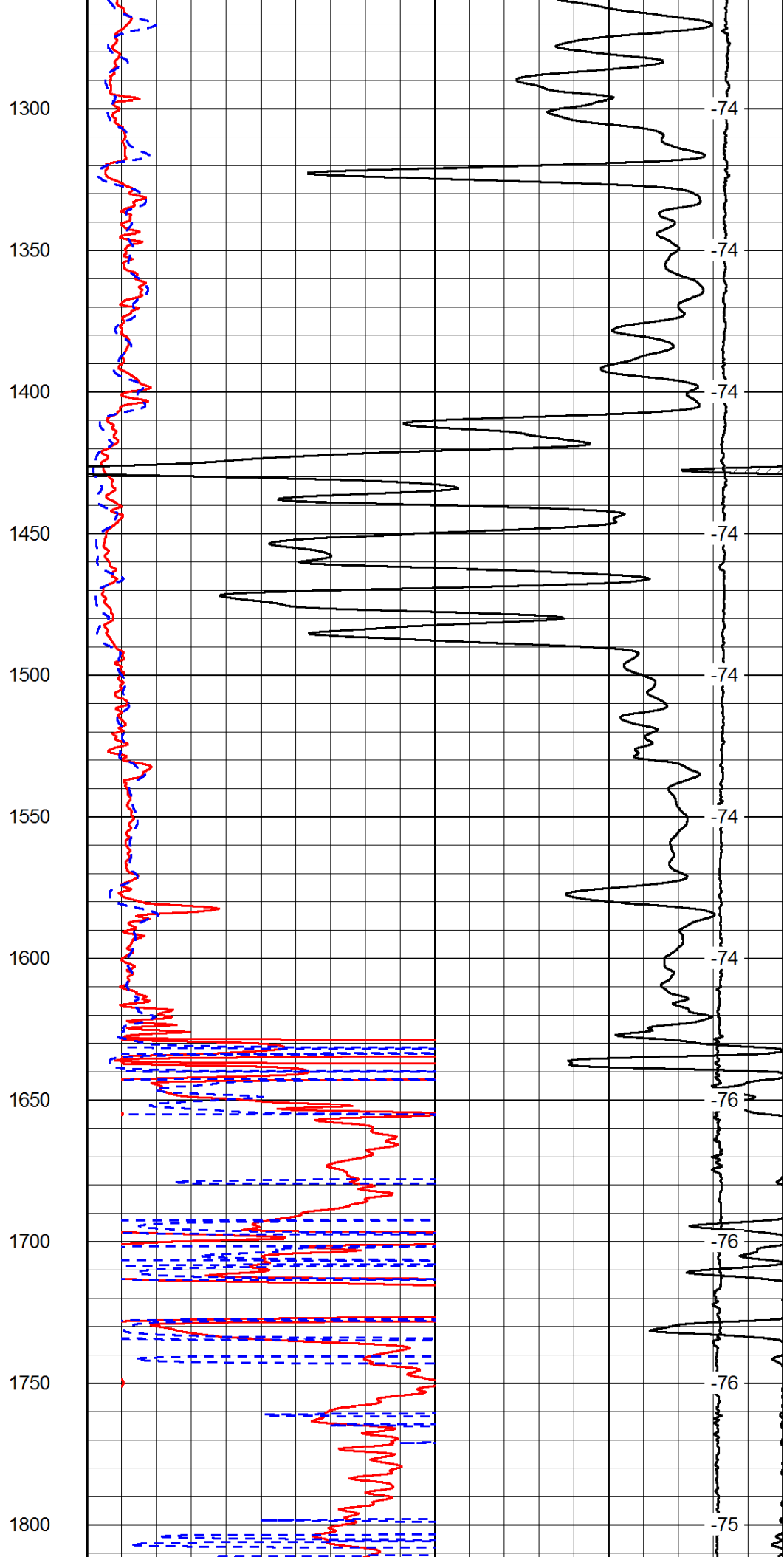
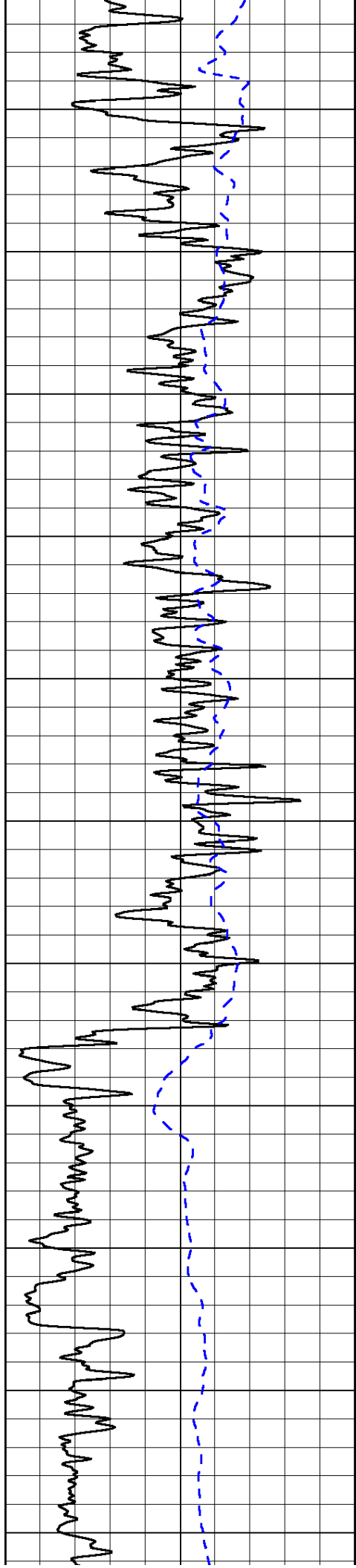
LSPD

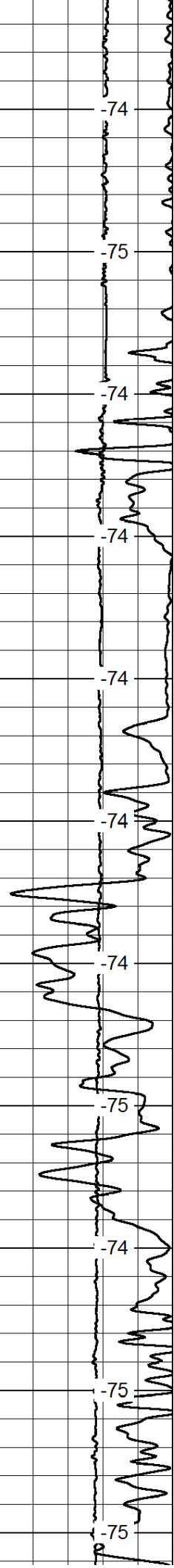
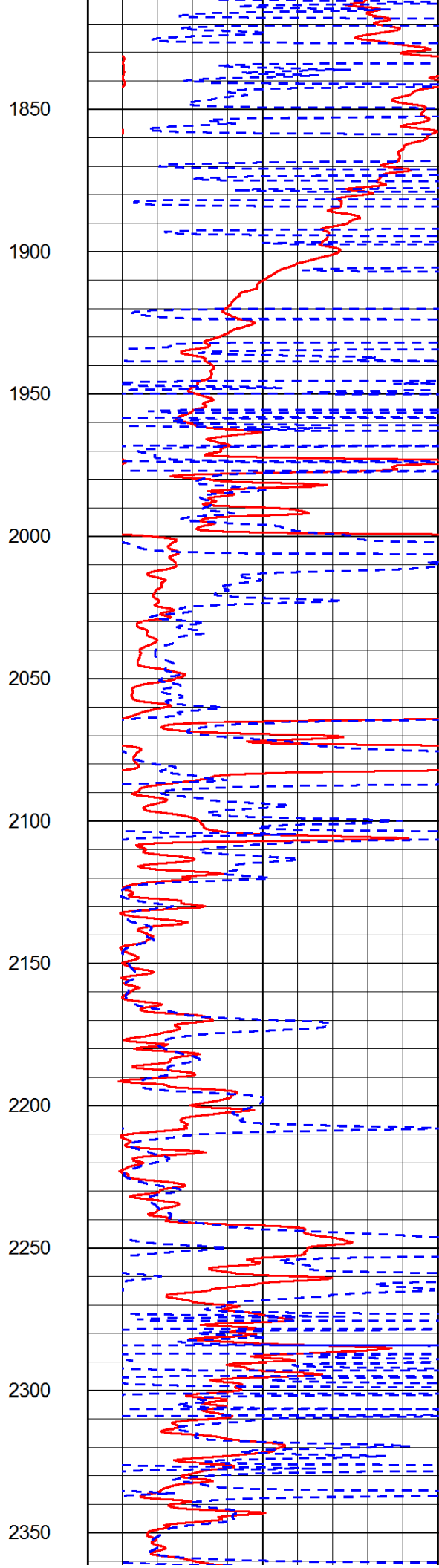
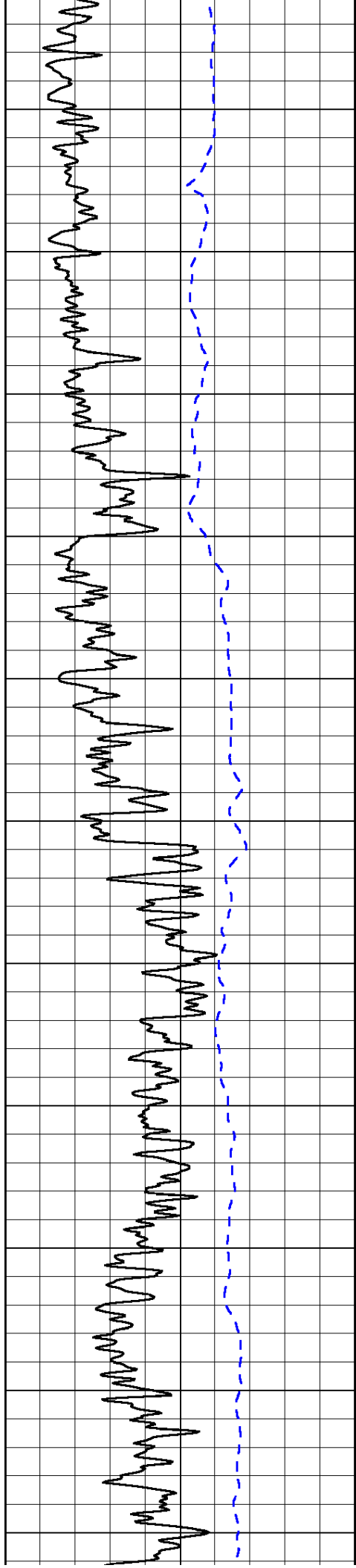
1000	Conductivity	0
15000	Line Tension	0

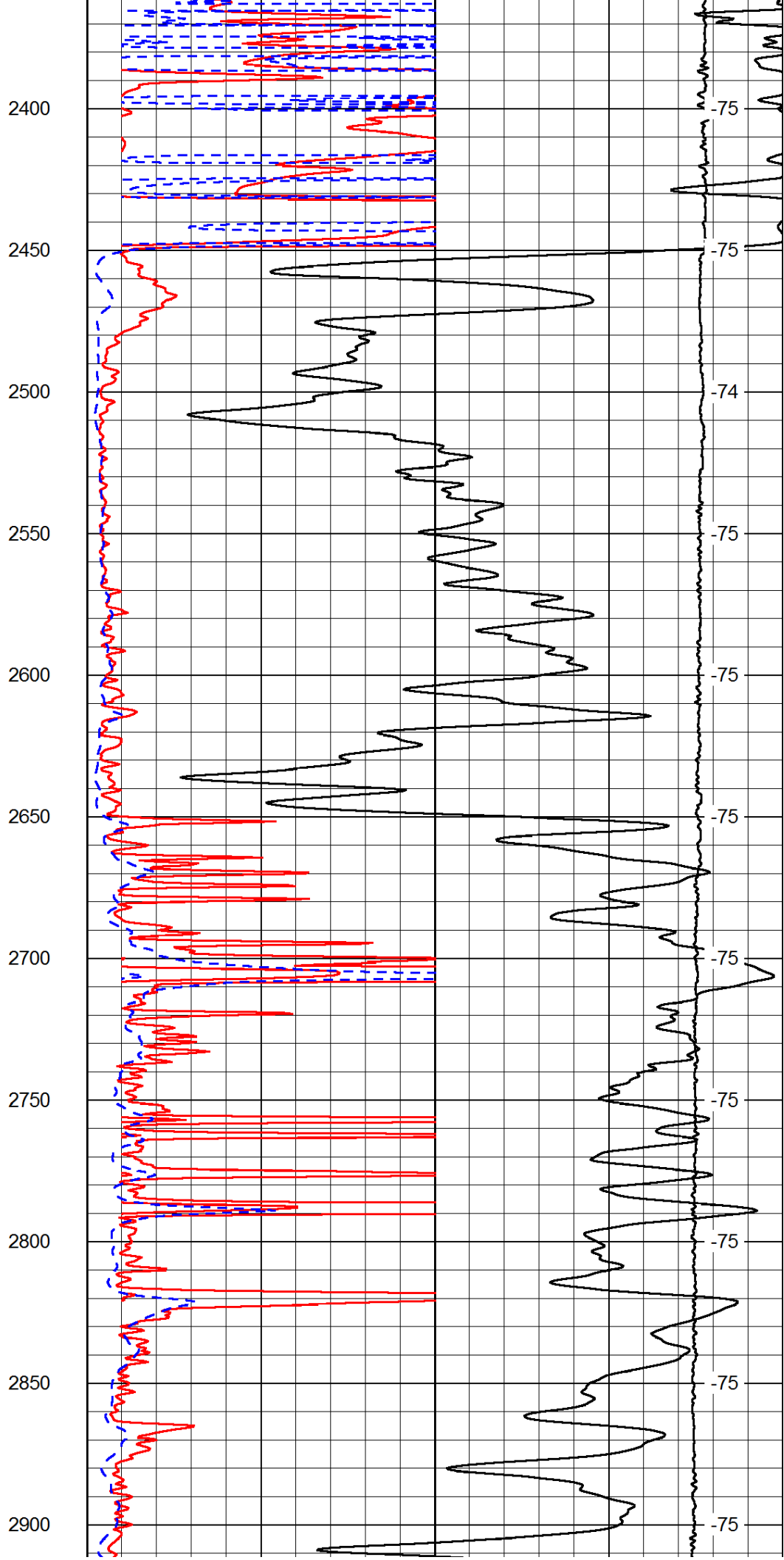
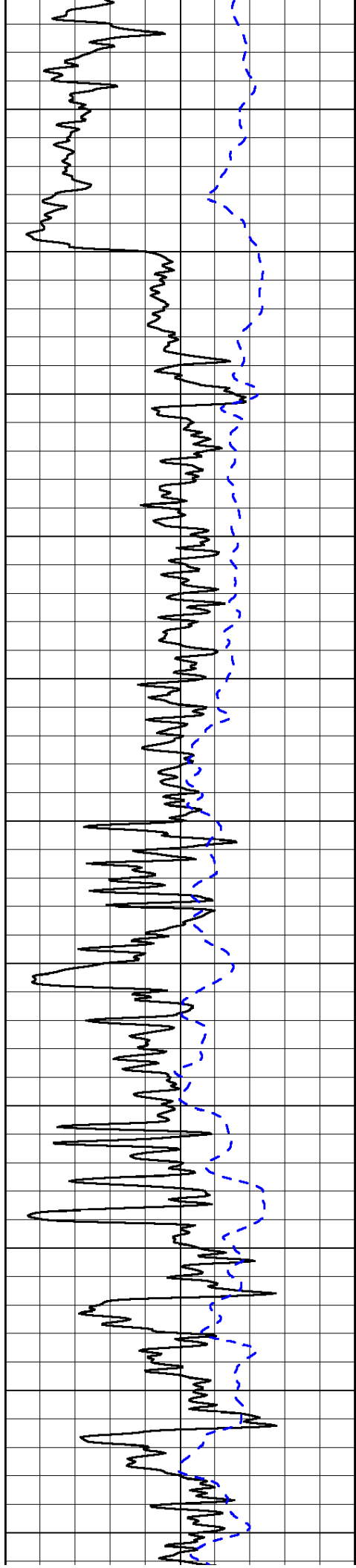
50	Shallow Resistivity	500
50	Deep Resistivity	500

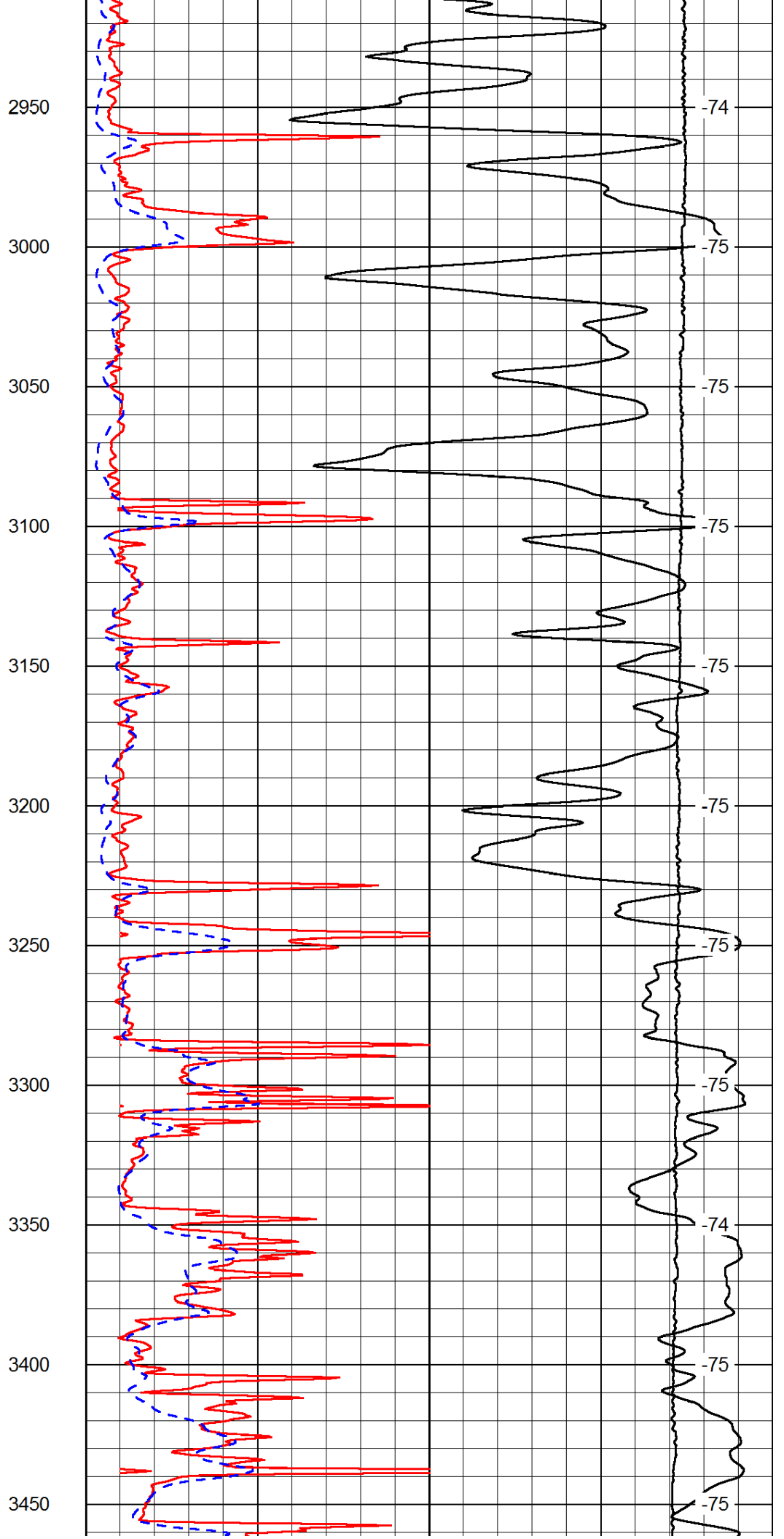
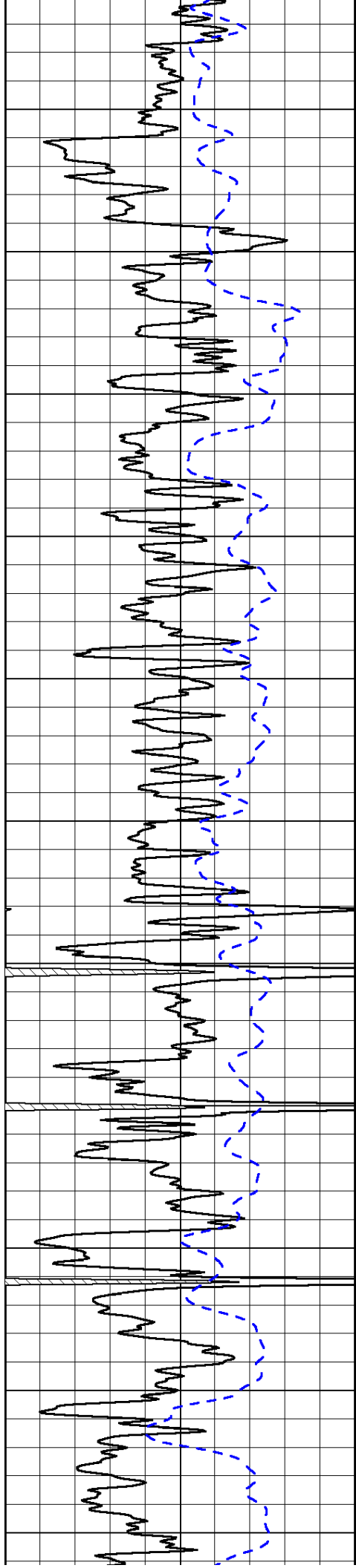


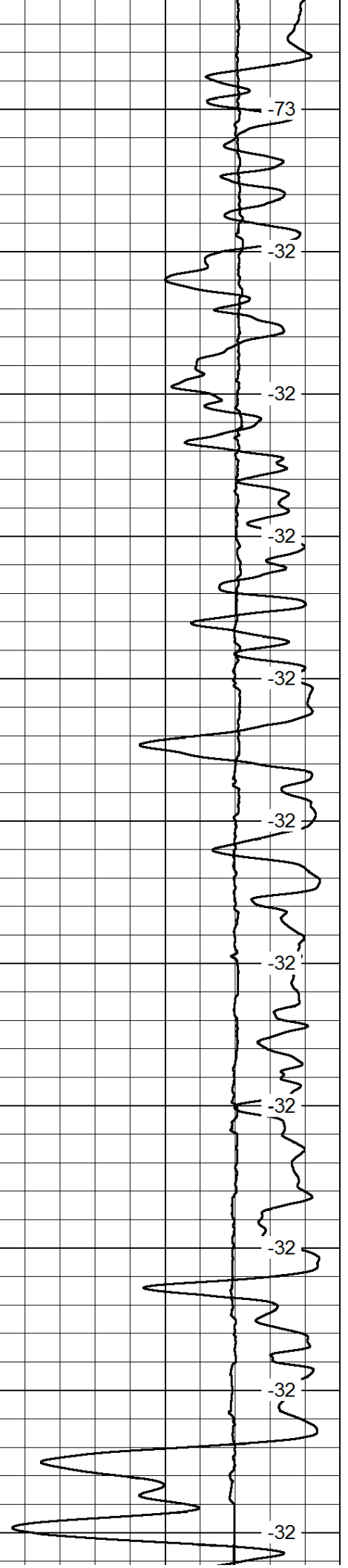
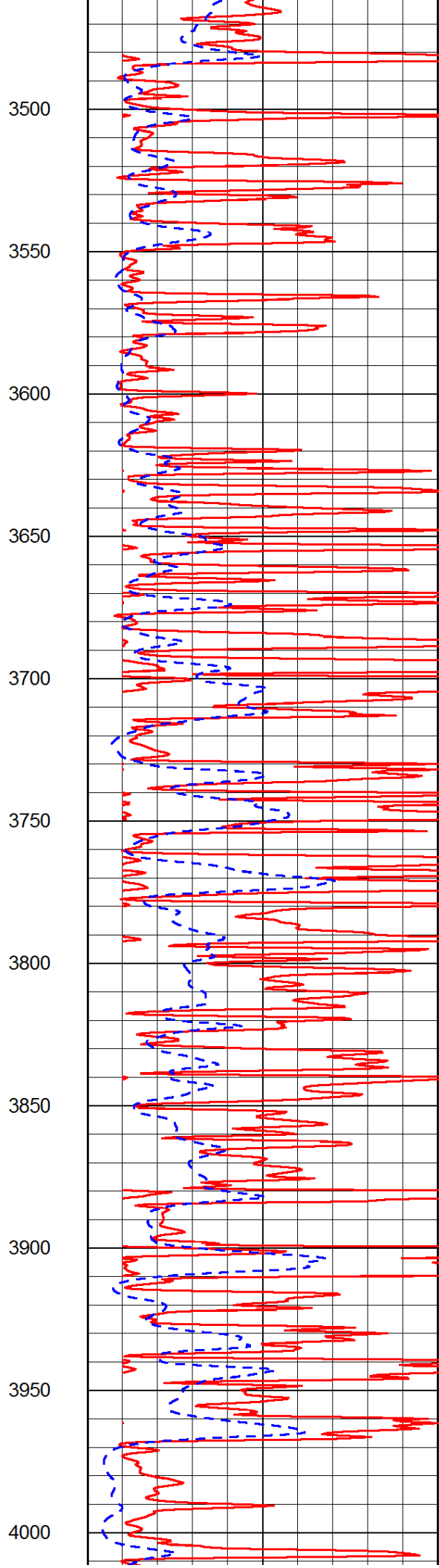
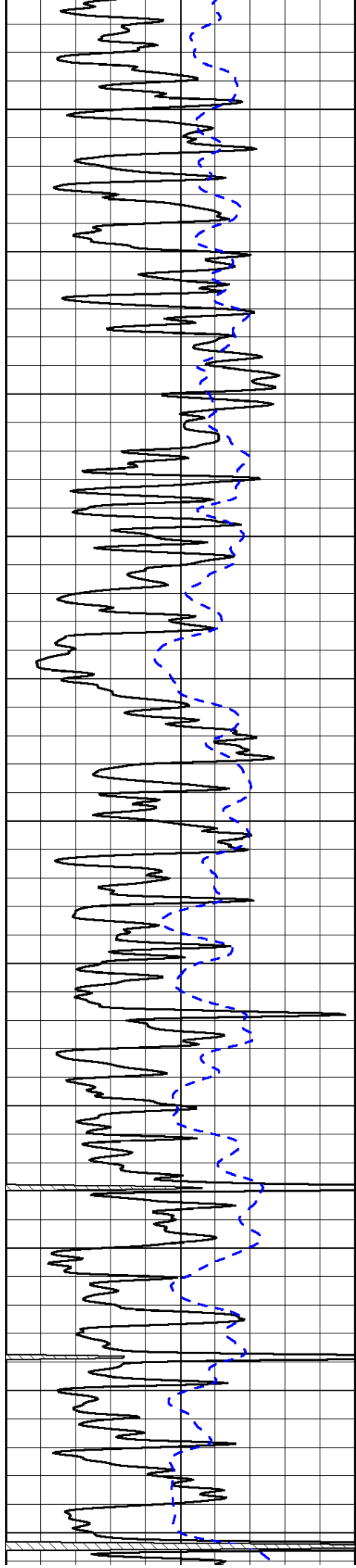




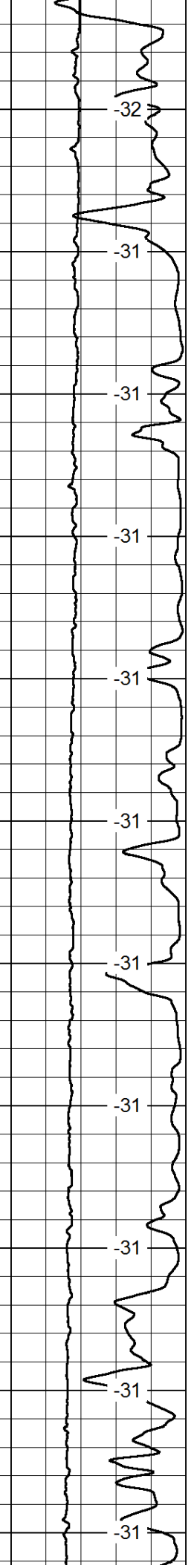
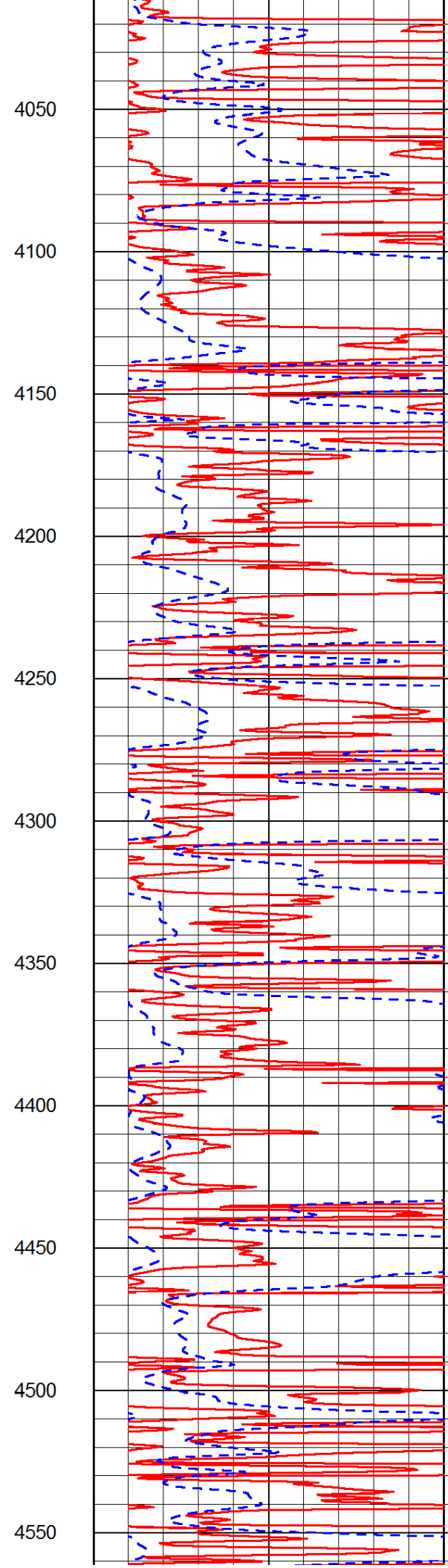
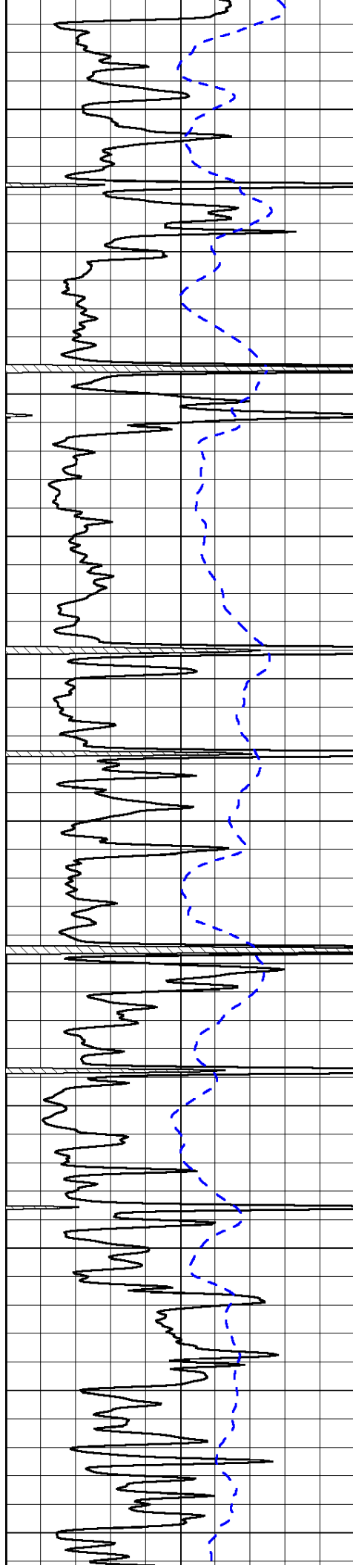


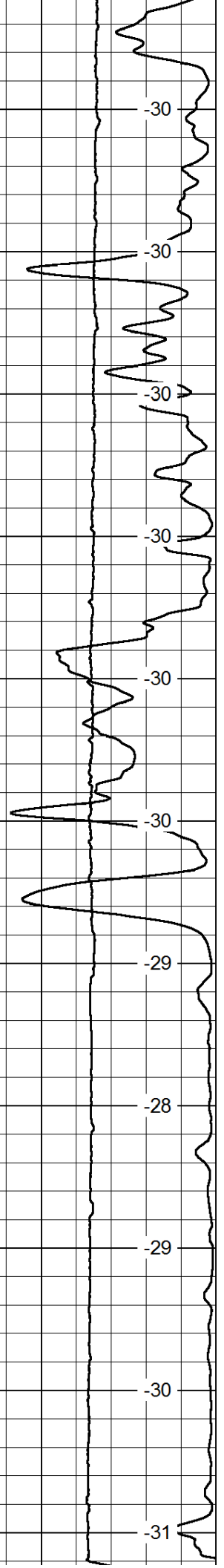
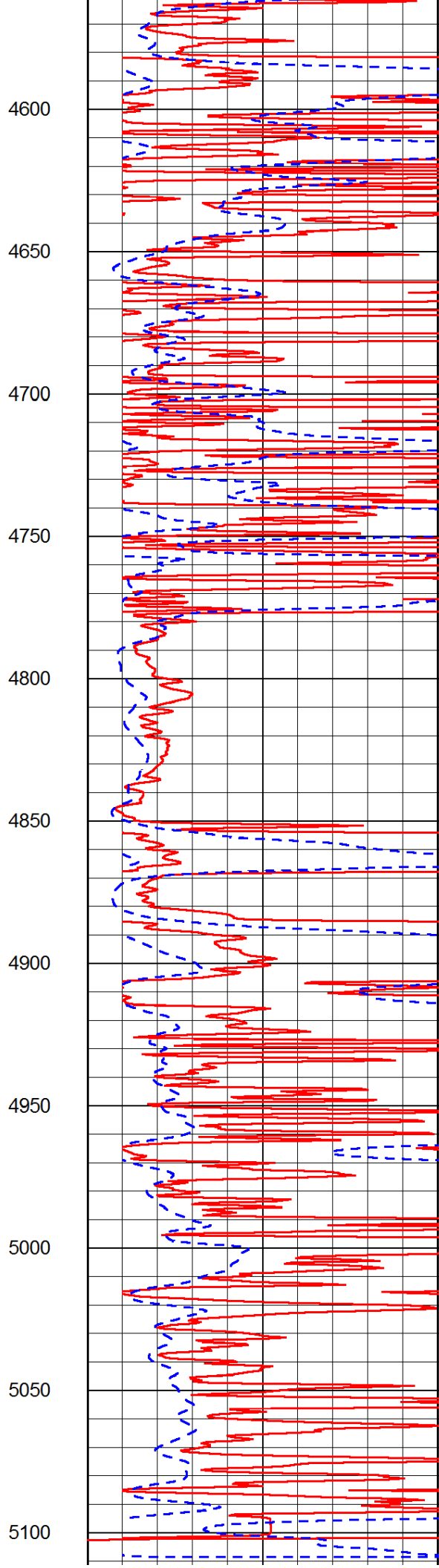
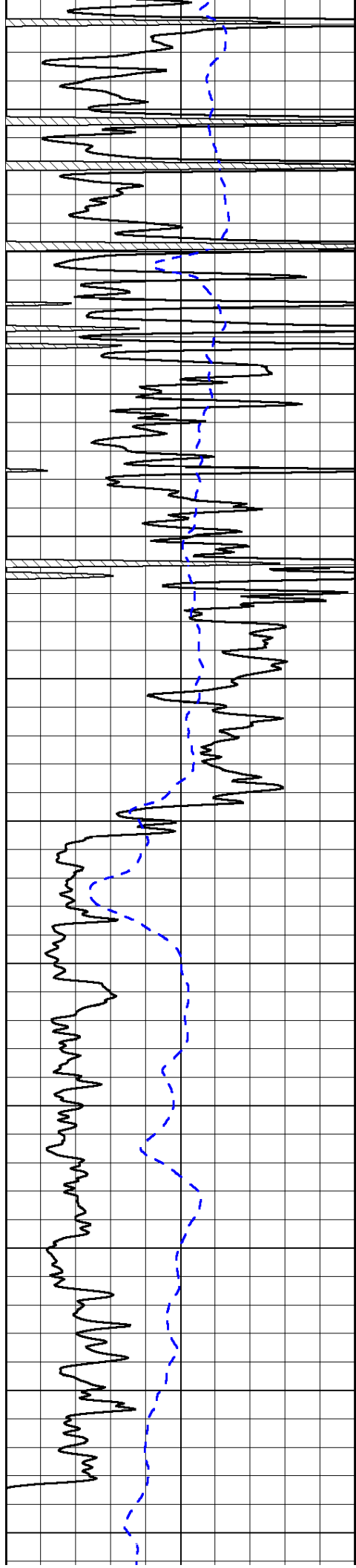












0	Gamma Ray	150
-200	SP (mV)	0

0	Shallow Resistivity	50
0	Deep Resistivity	50

LSPD

1000	Conductivity	0
15000	Line Tension	0

50	Shallow Resistivity	500
50	Deep Resistivity	500

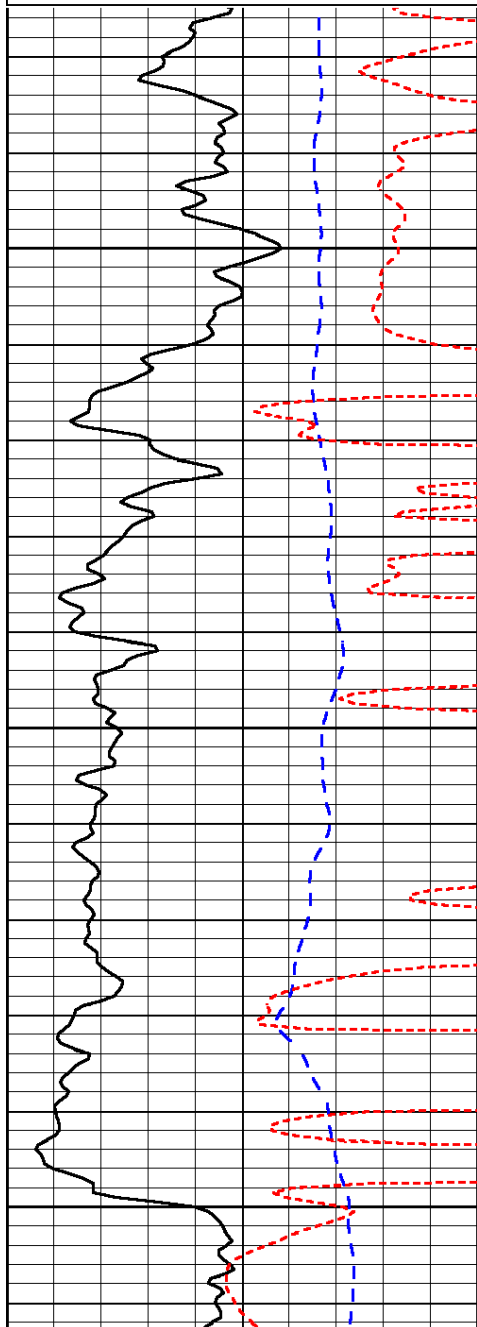
Database File: c:\warrior\data\new gulf\_krug no.1-28\nghd.db  
 Dataset Pathname: dil/ngstk  
 Presentation Format: dil  
 Dataset Creation: Thu May 10 02:28:38 2012  
 Charted by: Depth in Feet scaled 1:240

0	Gamma Ray	150
-200	SP (mV)	0
-160	Rxo / Rt	40

0.2	Deep Resistivity	2000
0.2	Medium Resistivity	2000
0.2	Shallow Resistivity	2000

15000	Line Tension	0
-------	--------------	---

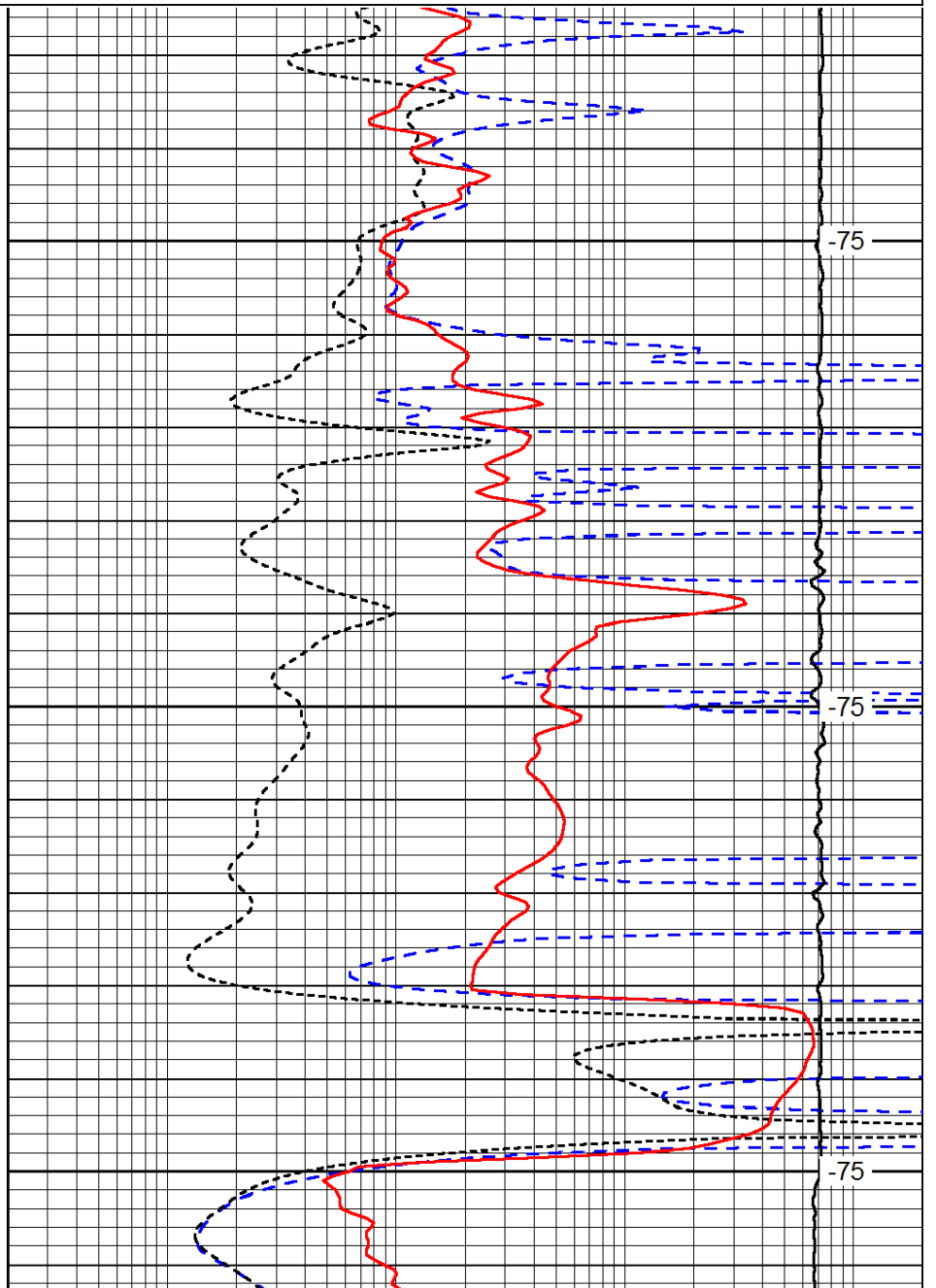
LSPD



2350

2400

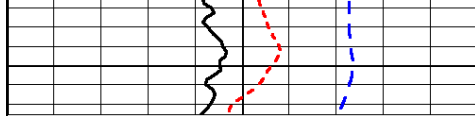
2450



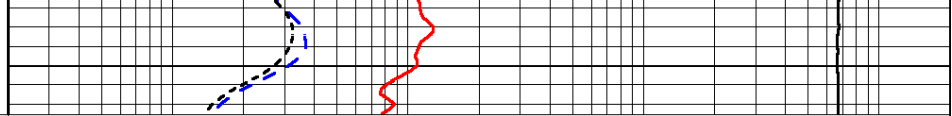
-75

-75

-75



0	Gamma Ray	150
-200	SP (mV)	0
-160	Rxo / Rt	40



0.2	Deep Resistivity	2000
0.2	Medium Resistivity	2000
0.2	Shallow Resistivity	2000
15000	Line Tension	0

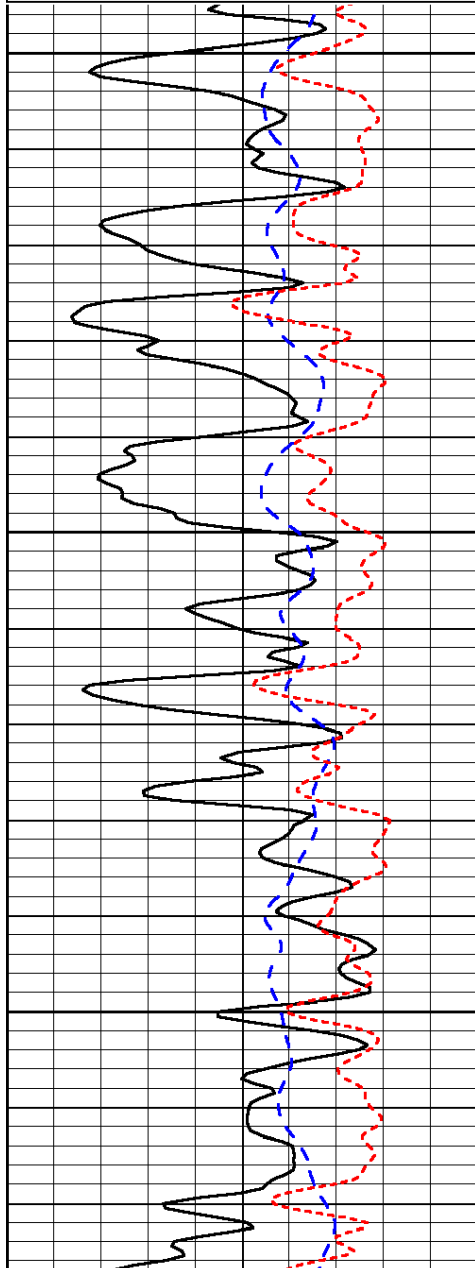
LSPD

Database File: c:\warrior\data\new gulf\_krug no.1-28\nghd.db  
 Dataset Pathname: dil/ngstk  
 Presentation Format: dil  
 Dataset Creation: Thu May 10 02:28:38 2012  
 Charted by: Depth in Feet scaled 1:240

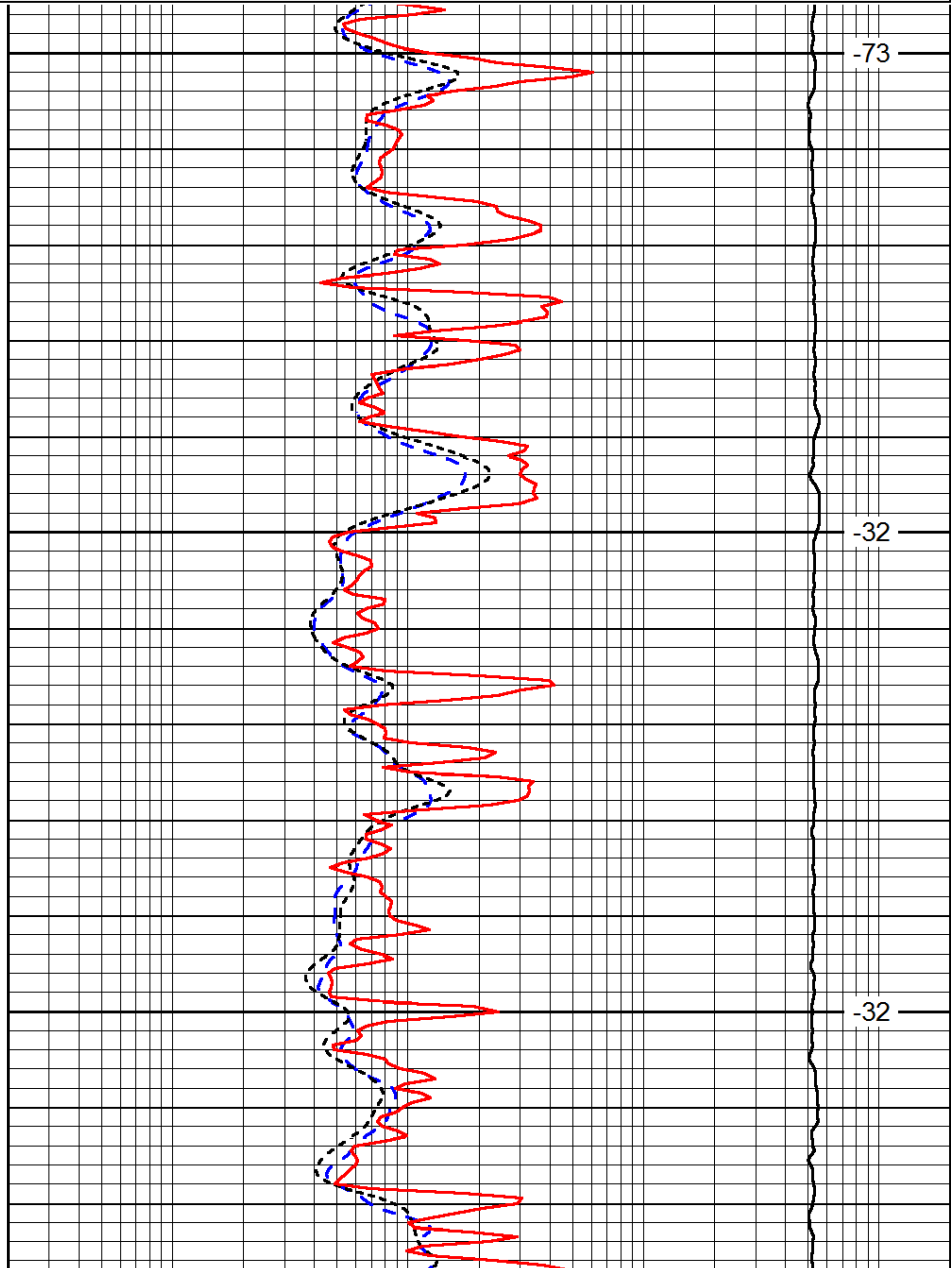
0	Gamma Ray	150
-200	SP (mV)	0
-160	Rxo / Rt	40

0.2	Deep Resistivity	2000
0.2	Medium Resistivity	2000
0.2	Shallow Resistivity	2000
15000	Line Tension	0

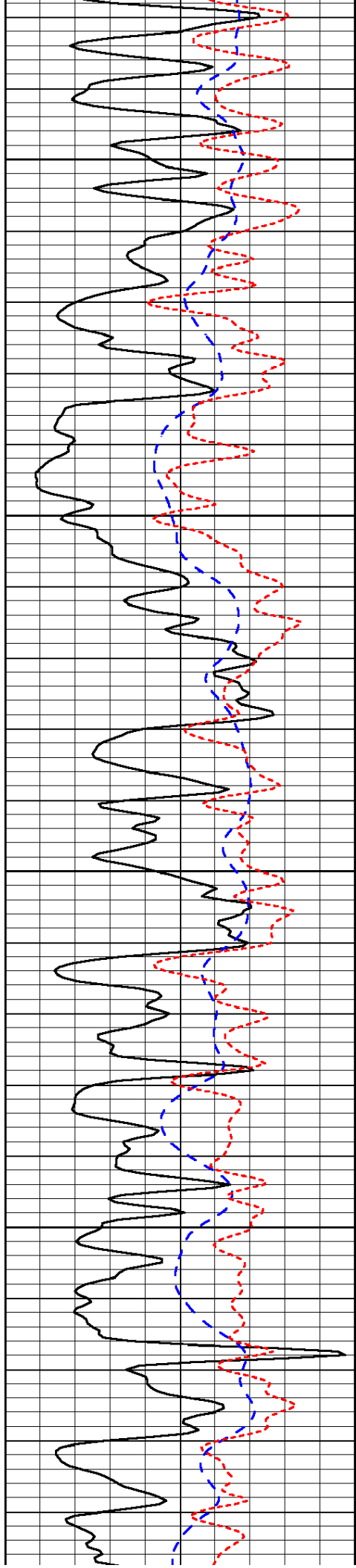
LSPD



3500  
3550  
3600



-73  
-32  
-32

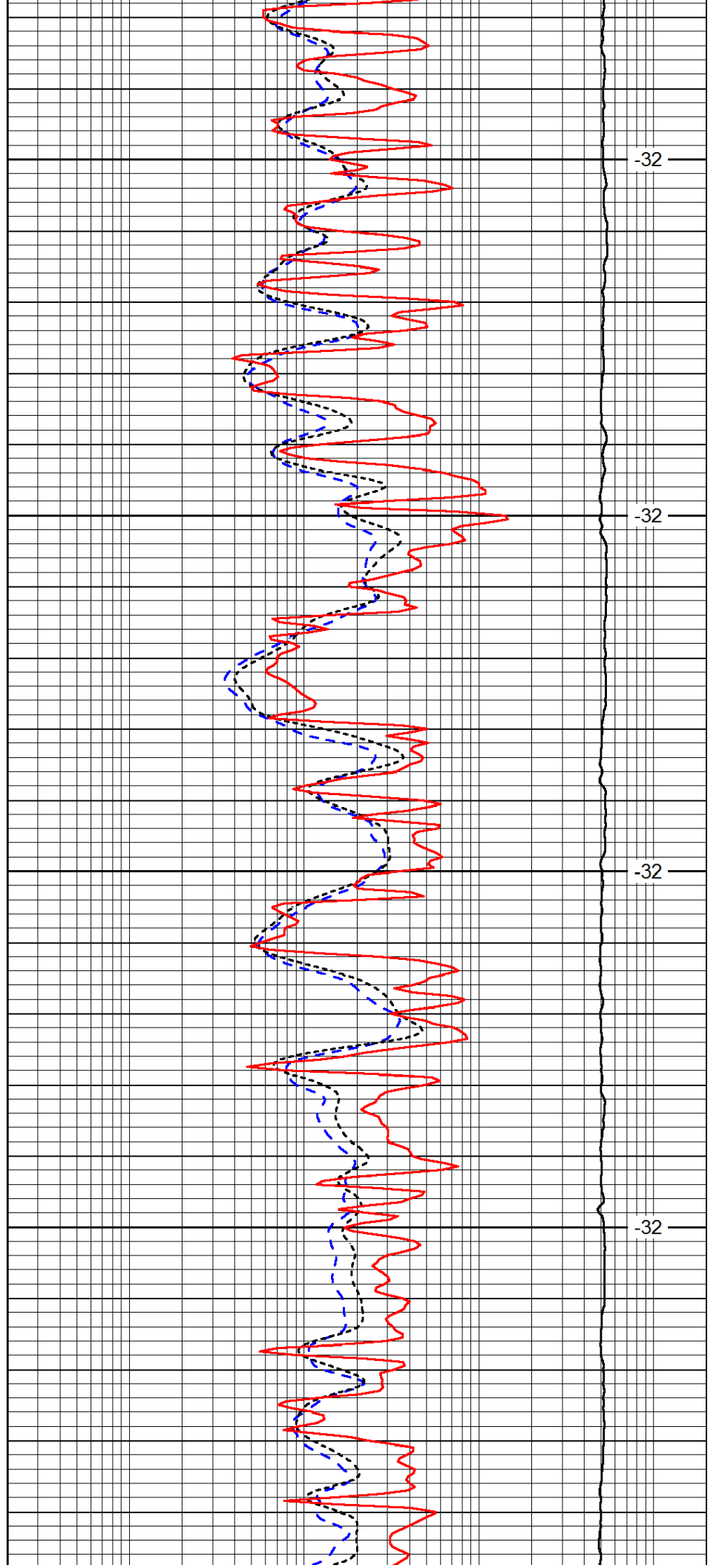


3650

3700

3750

3800

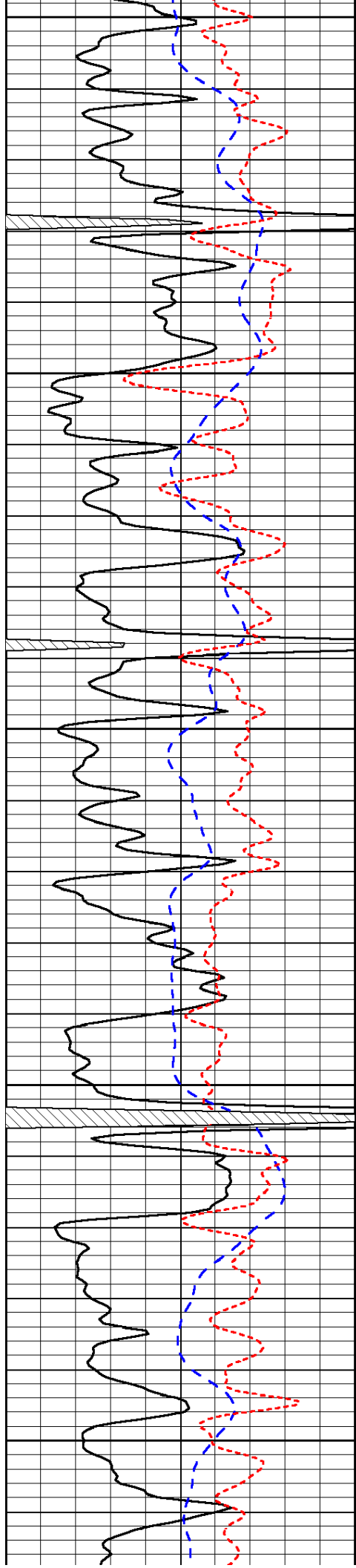


-32

-32

-32

-32



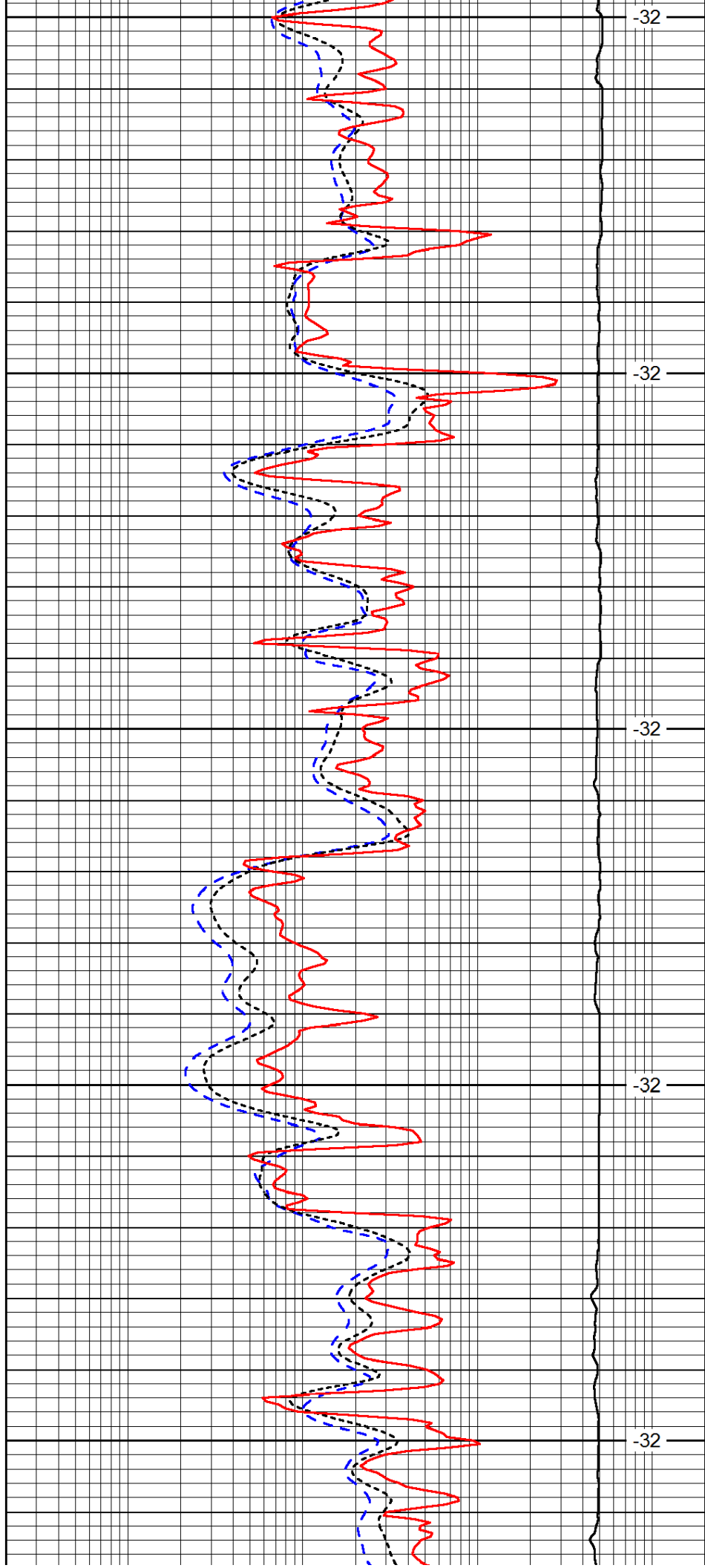
3850

3900

3950

4000

4050



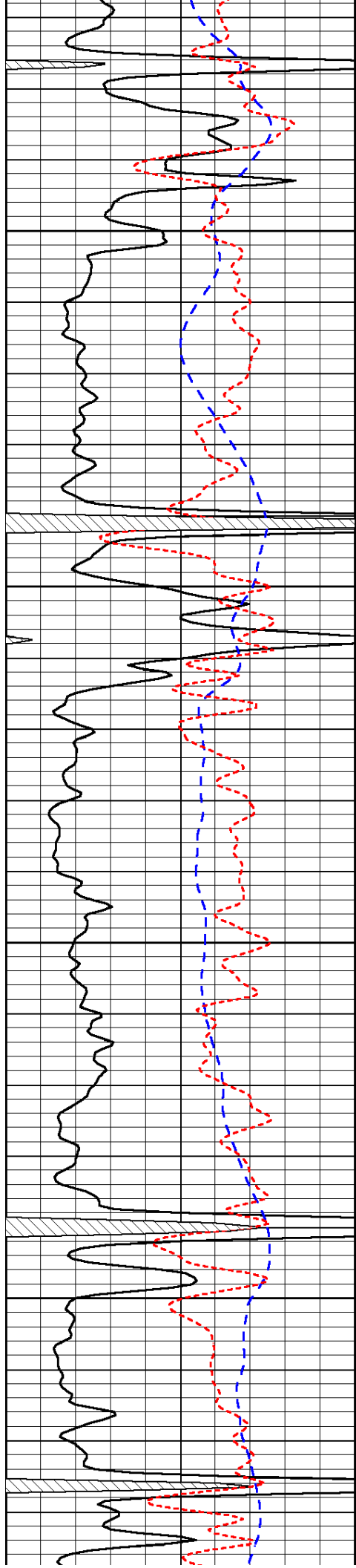
-32

-32

-32

-32

-32

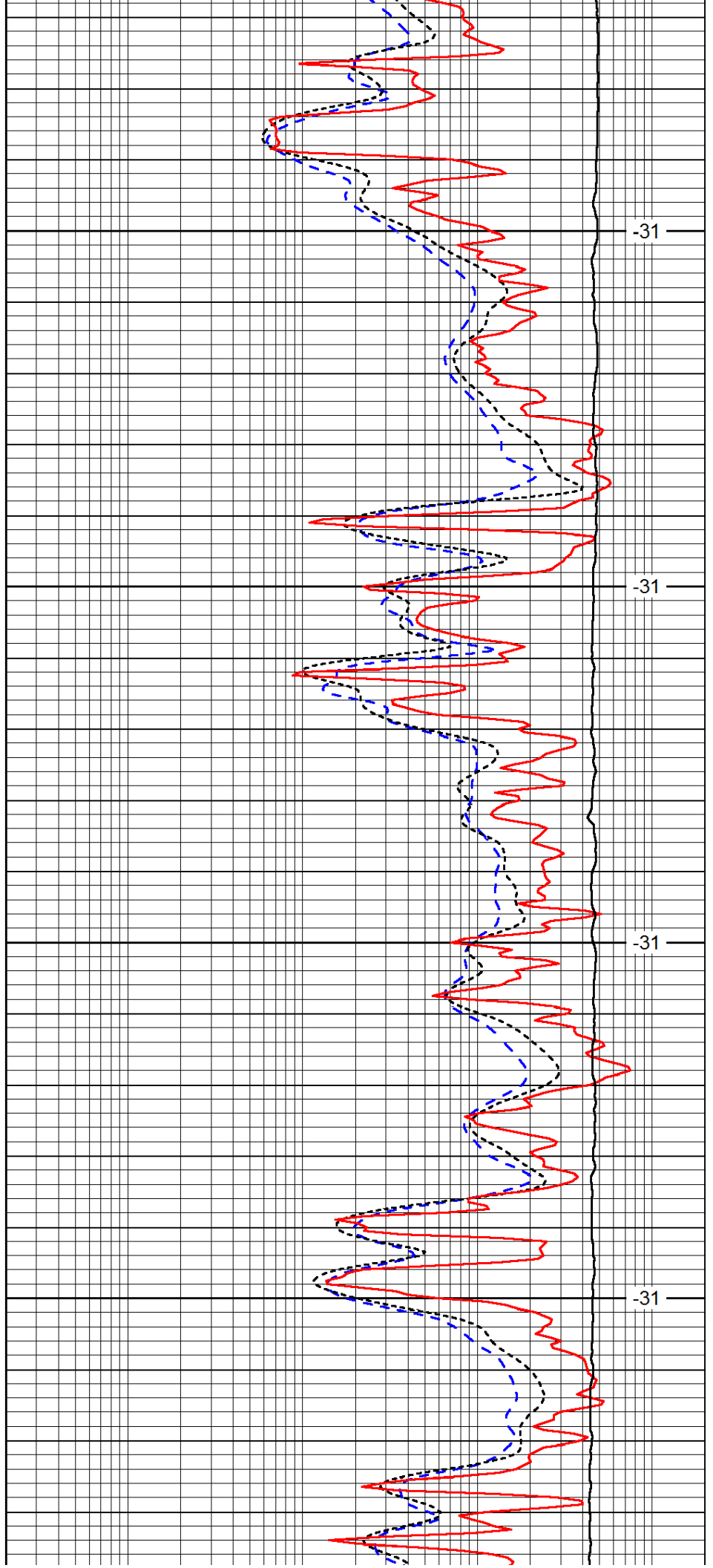


4100

4150

4200

4250

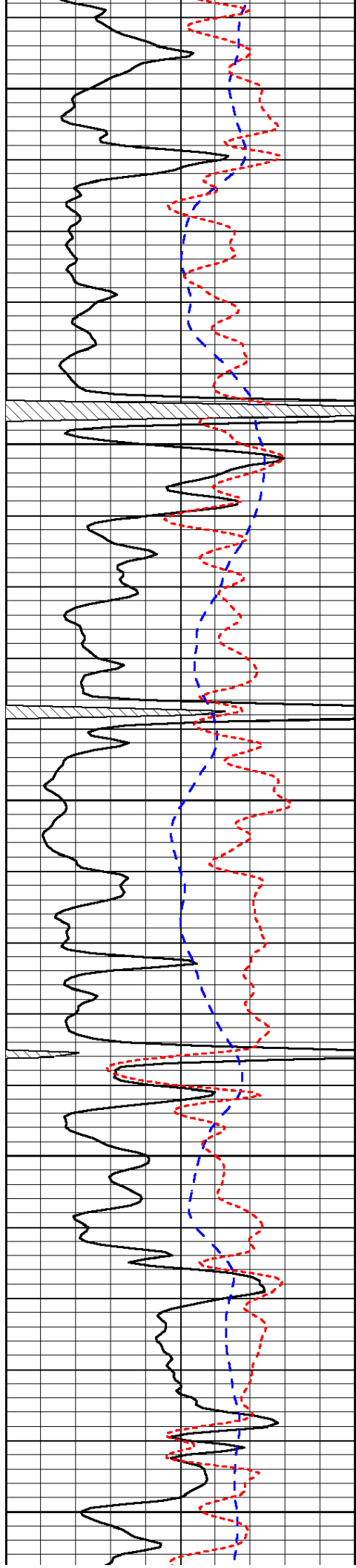


-31

-31

-31

-31



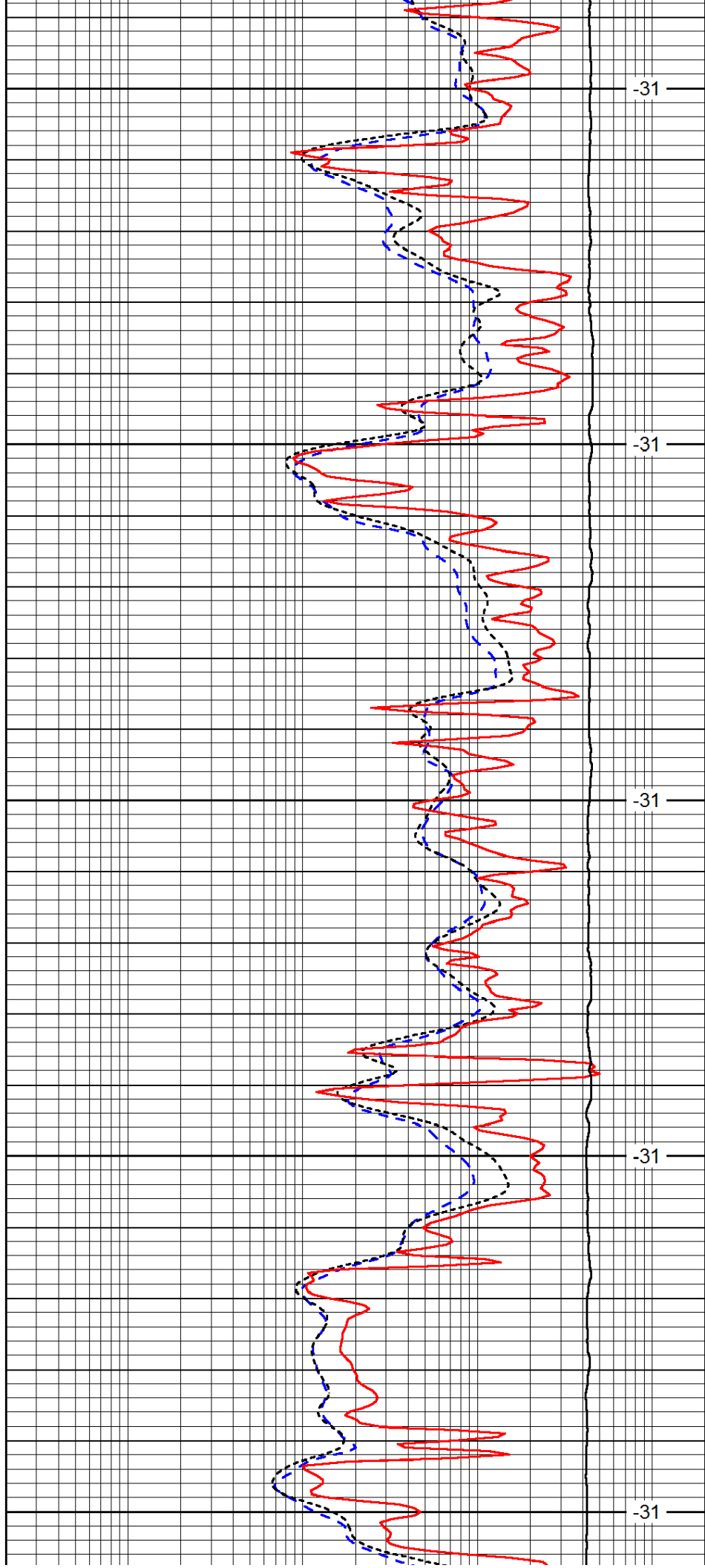
4300

4350

4400

4450

4500



-31

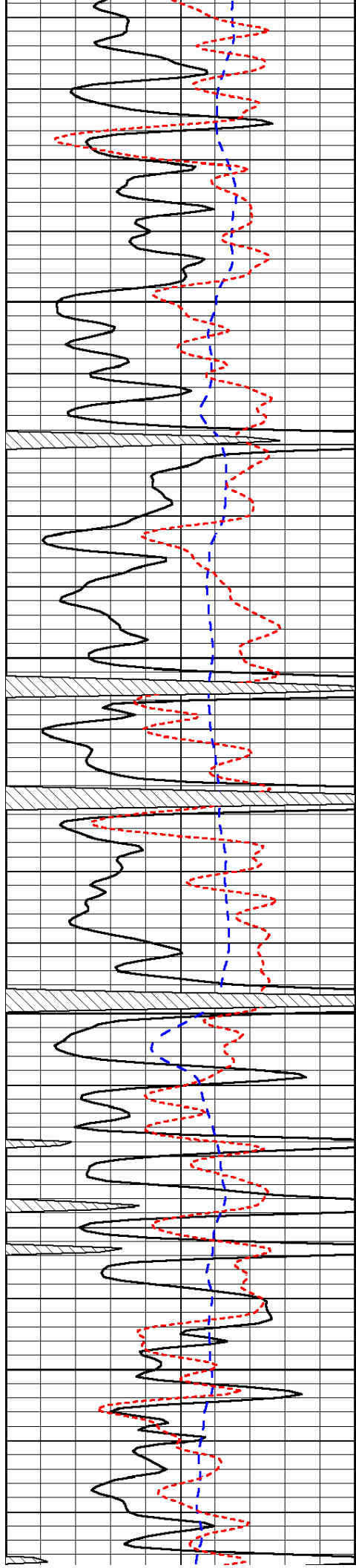
-31

-31

-31

-31



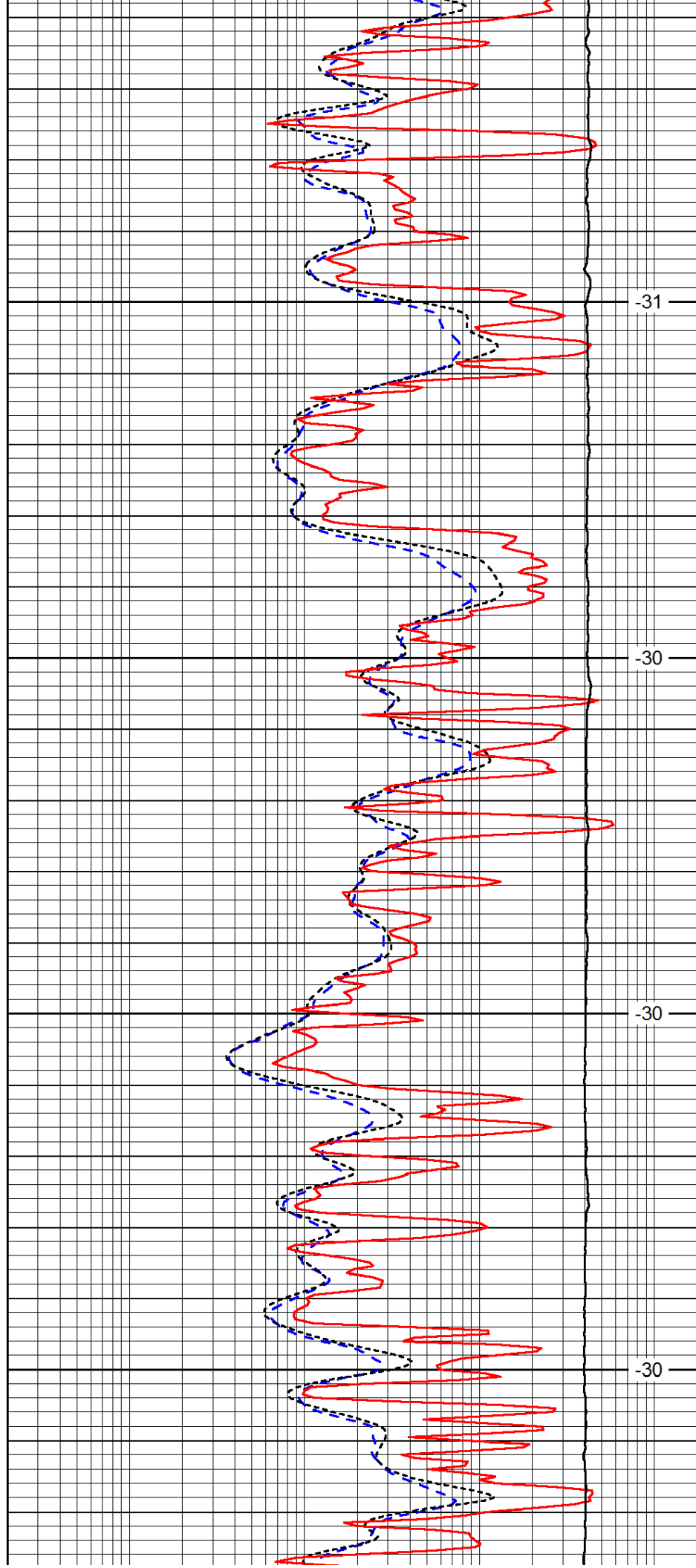


4550

4600

4650

4700

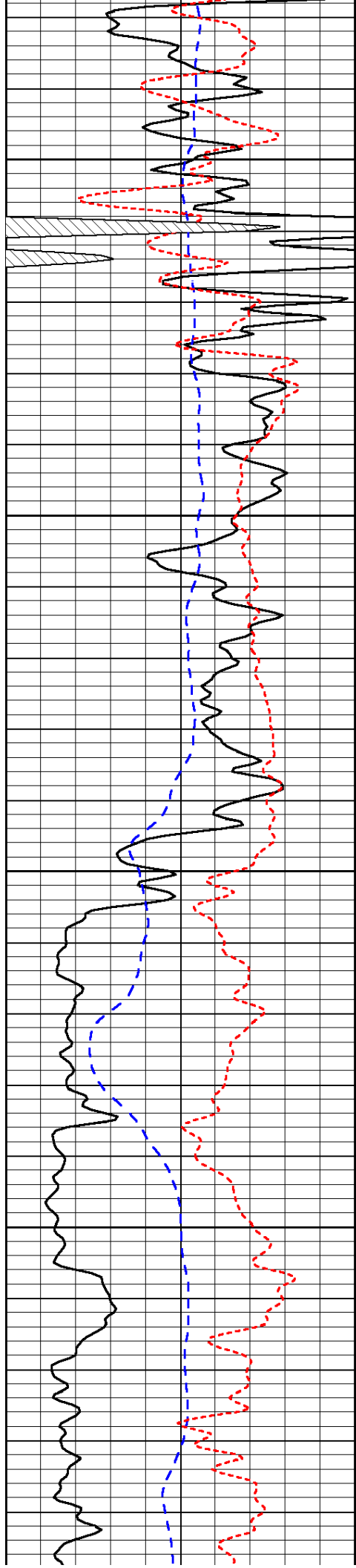


-31

-30

-30

-30

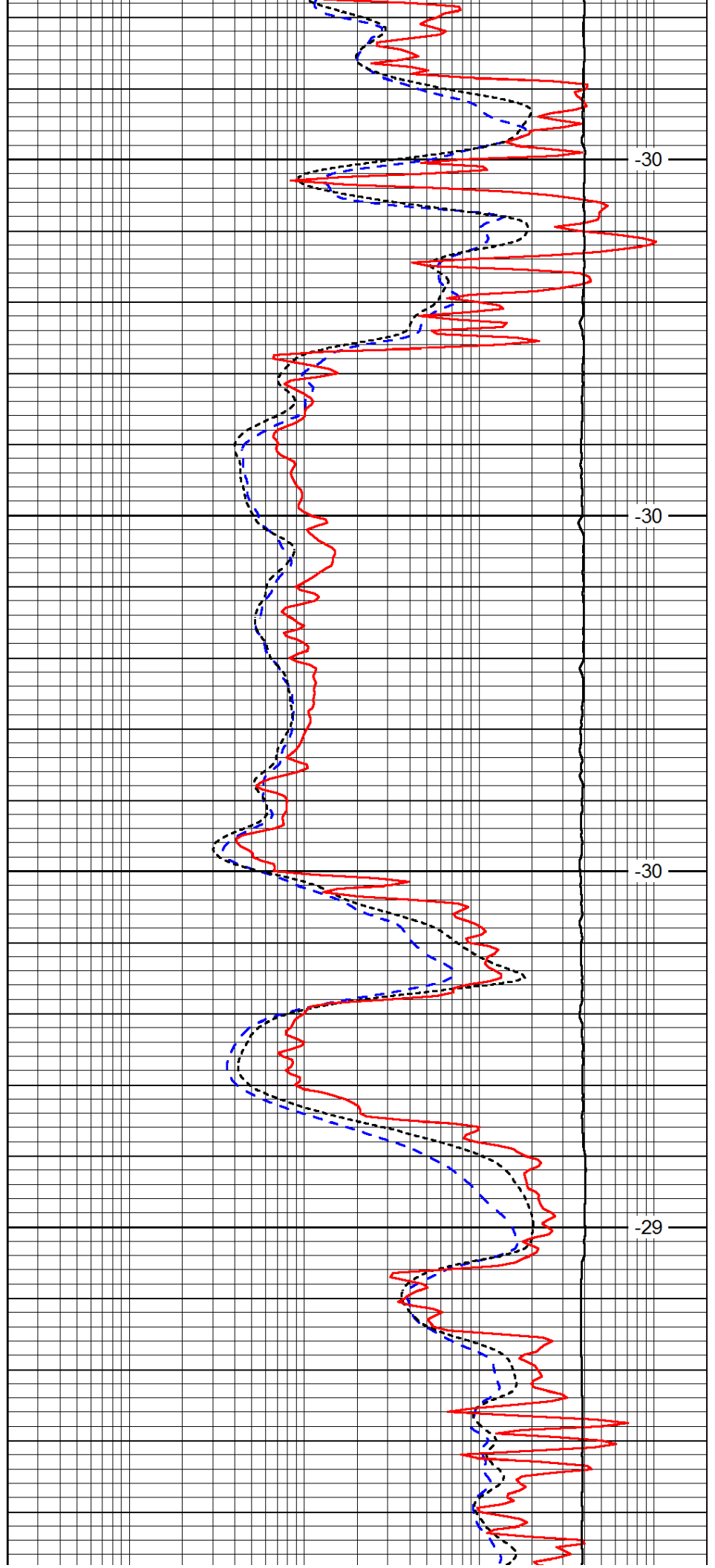


4750

4800

4850

4900

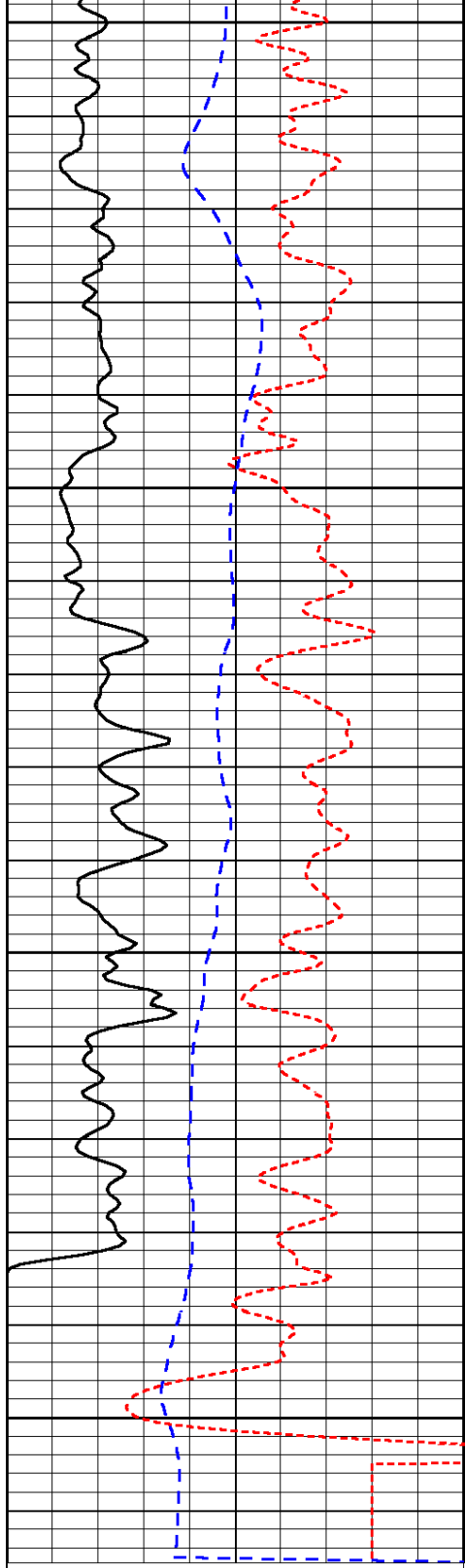


-30

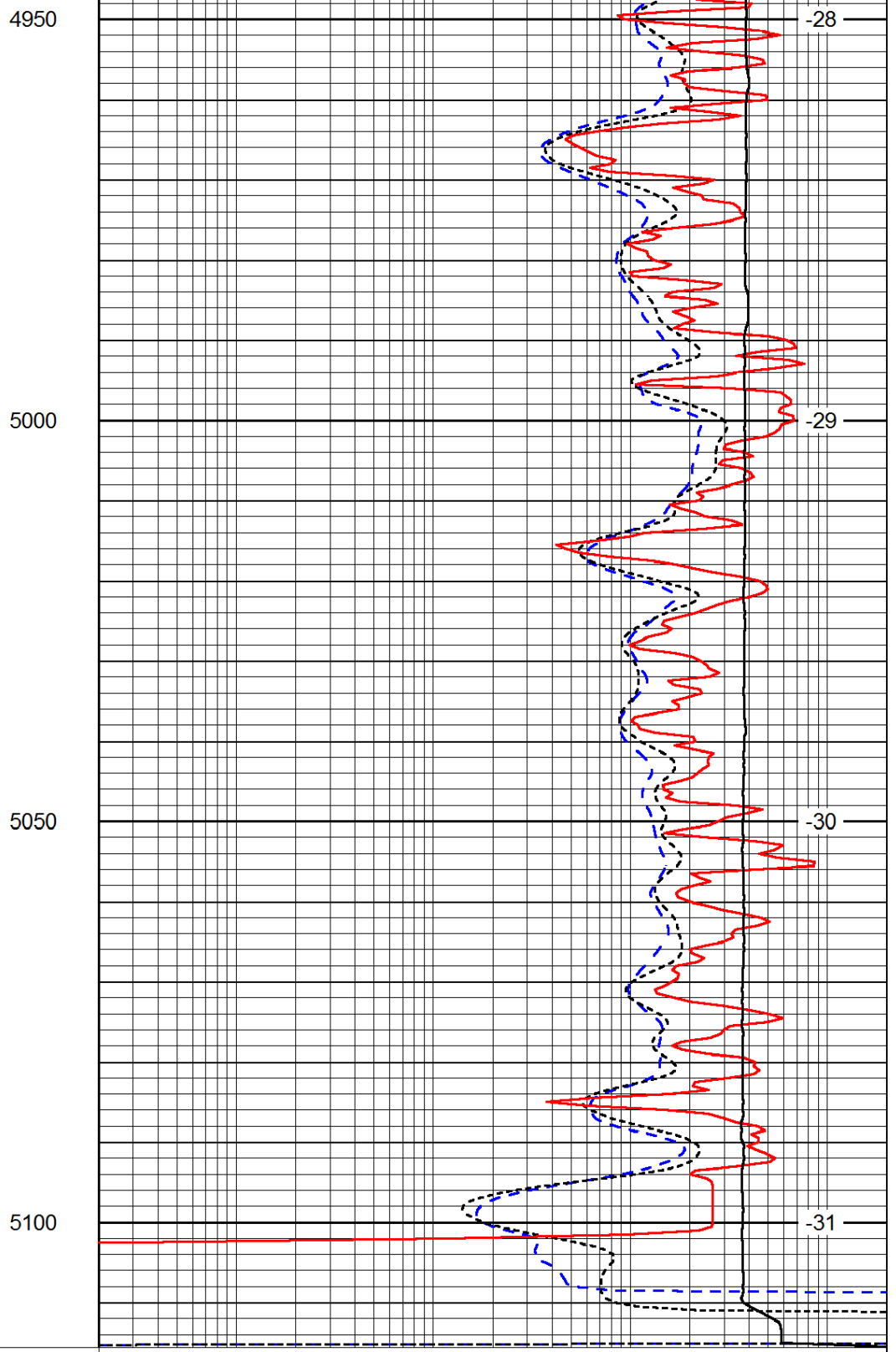
-30

-30

-29



0	Gamma Ray	150
-200	SP (mV)	0
-160	Rxo / Rt	40



0.2	Deep Resistivity	2000
0.2	Medium Resistivity	2000
0.2	Shallow Resistivity	2000
15000	Line Tension	0

LSPD