

# LOG-TECH



DIGITAL LOG

(785) 625-3858

## Dual Ind. / Neutron-Density Composite Log

API No.	15-171-20,874-00-00	
Company	New Gulf Operating, LLC.	
Well	David #1-32	
Field	N/A	
County	Scott	State
Location	1190' FNL & 1252' FWL	
Sec:	32	Twp: 17 S Rge: 34 W
Other Services	MEL	
Permanent Datum	Ground Level	Elevation 3150
Log Measured From	Kelly Bushing	10 Ft. Above Perm. Datum
Drilling Measured From	Kelly Bushing	K.B. 3160
		D.F. 3150
		G.L. 3150

Date	4/25/2012	
Run Number	One	
Depth Driller	5080	
Depth Logger	5078	
Bottom Logged Interval	5077	
Top Log Interval	3500	
Casing Driller	8.625 @ 249	
Casing Logger	249	
Bit Size	7.875	
Type Fluid in Hole	Chemical	
Salinity, ppm CL	5,000	
Density / Viscosity	9.2	54
pH / Fluid Loss	10.5	8.8
Source of Sample	Flowline	
Rm @ Meas. Temp	.65 @ 70	
Rmf @ Meas. Temp	.49 @ 70	
Rmc @ Meas. Temp	.88 @ 70	
Source of Rmf / Rmc	Charts	
Rm @ BHT	.35 @ 129	
Operating Rig Time	4 1/2 Hours	
Max Rec. Temp. F	129	
Equipment Number	10	
Location	Hays	
Recorded By	K. Bange	
Witnessed By	Curtis Covey	
	Danny Birdwell	

<<< Fold Here >>>

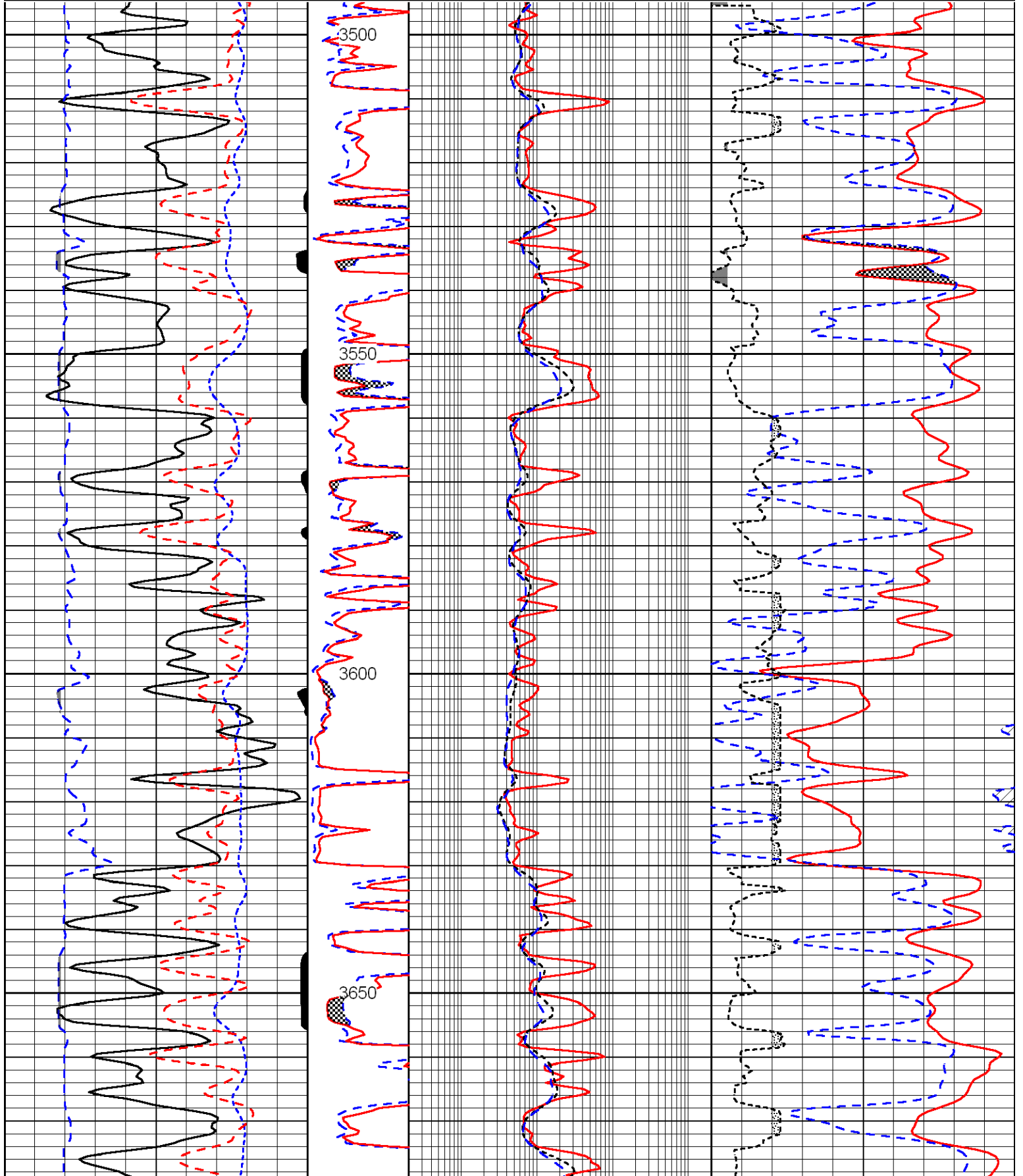
All interpretations are opinions based on inferences from electrical or other measurements and we cannot and do not guarantee the accuracy or correctness of any interpretation, and we shall not, except in the case of gross or willful negligence on our part, be liable or responsible for any loss, costs, damages, or expenses incurred or sustained by anyone resulting from any interpretation made by any of our officers, agents or employees. These interpretations are also subject to our general terms and conditions set out in our current Price Schedule.

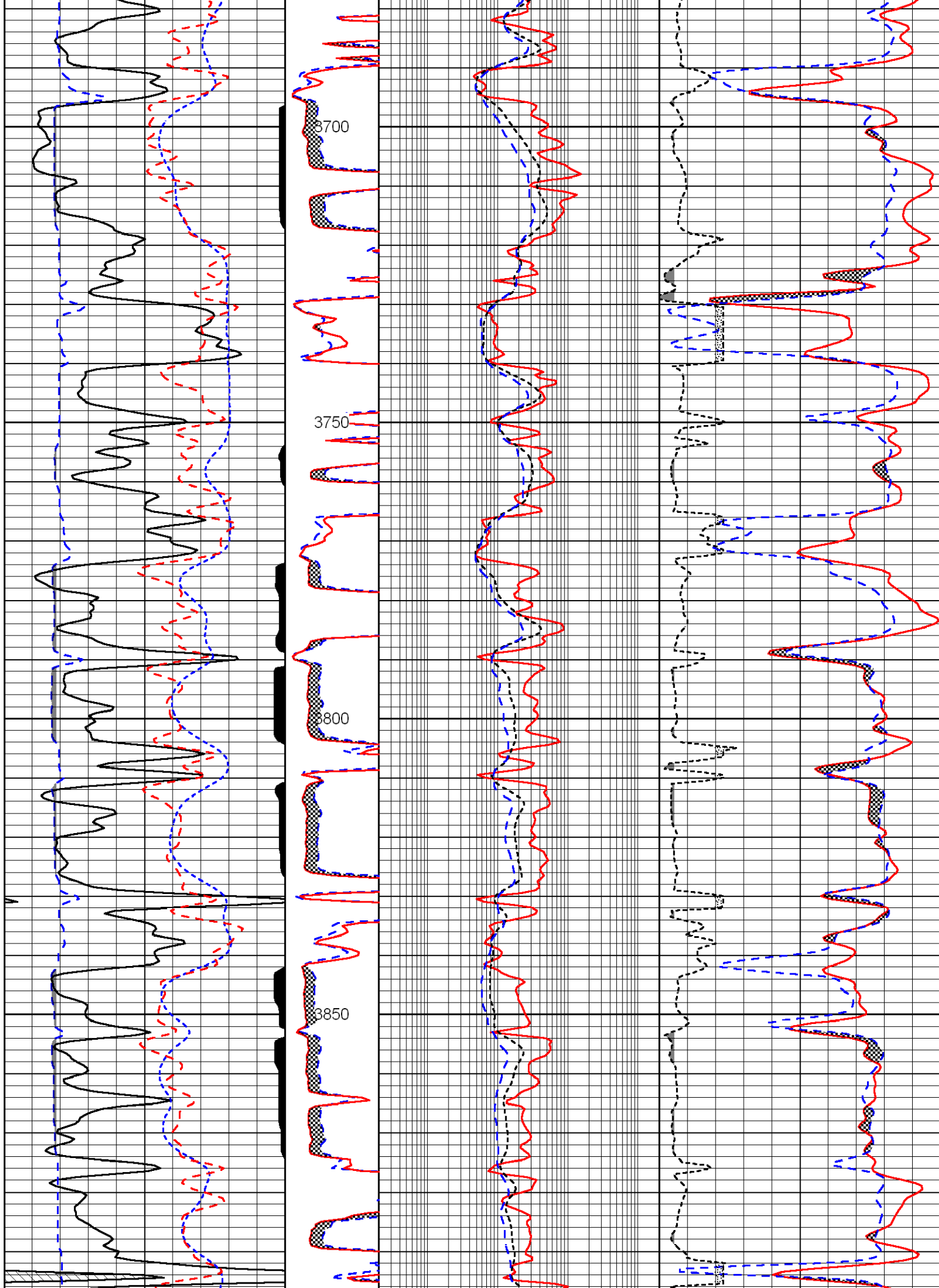
### Comments

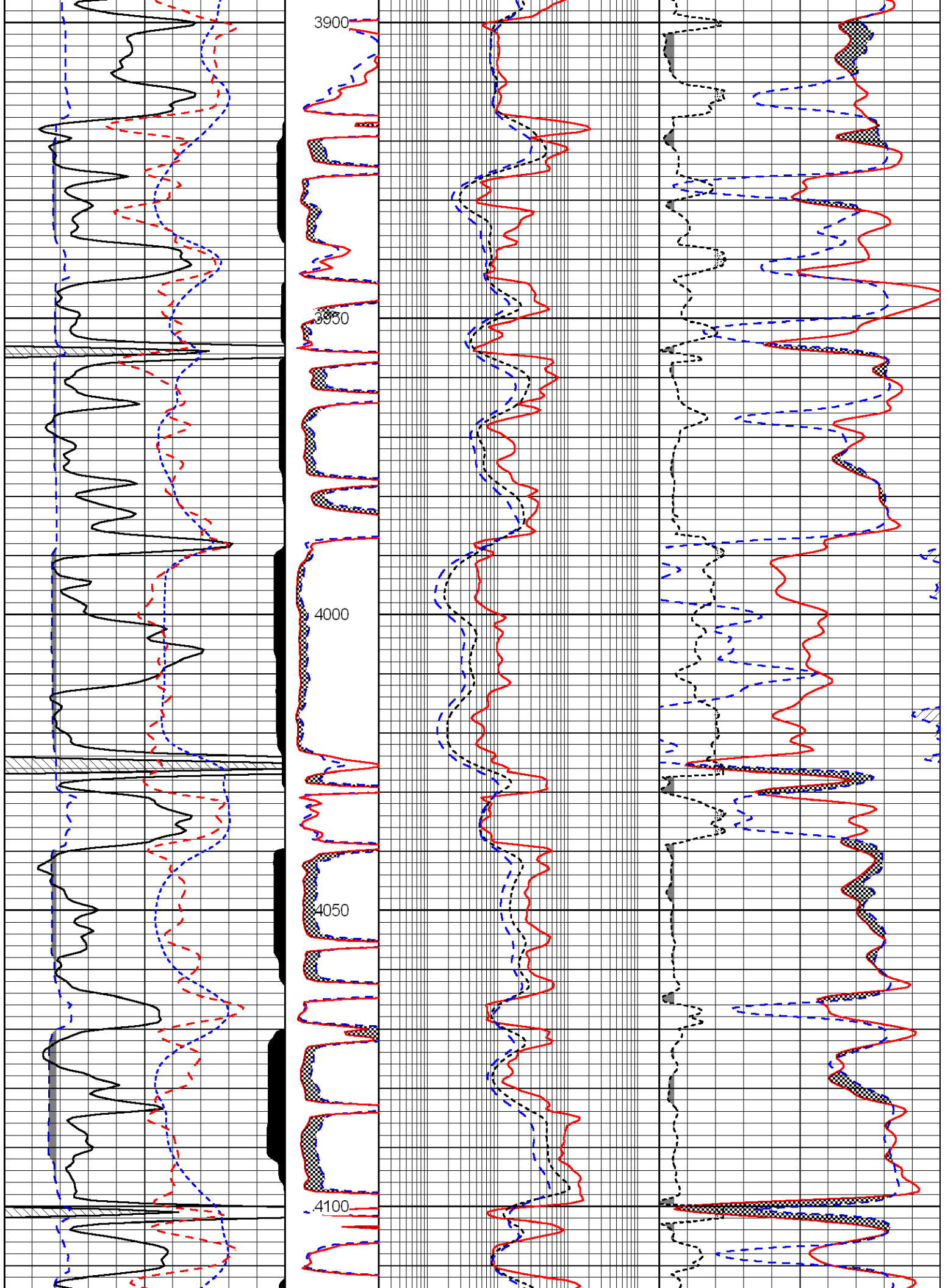
Thank you for using Log-Tech, Inc.  
 (785) 625-3858  
 Scott Cty, W to Modoc, 1 N to 'T' intersection  
 1/2 E, 3 N, 1 1/2 W, S into  
 Hit Bridge @ 253' and 2455

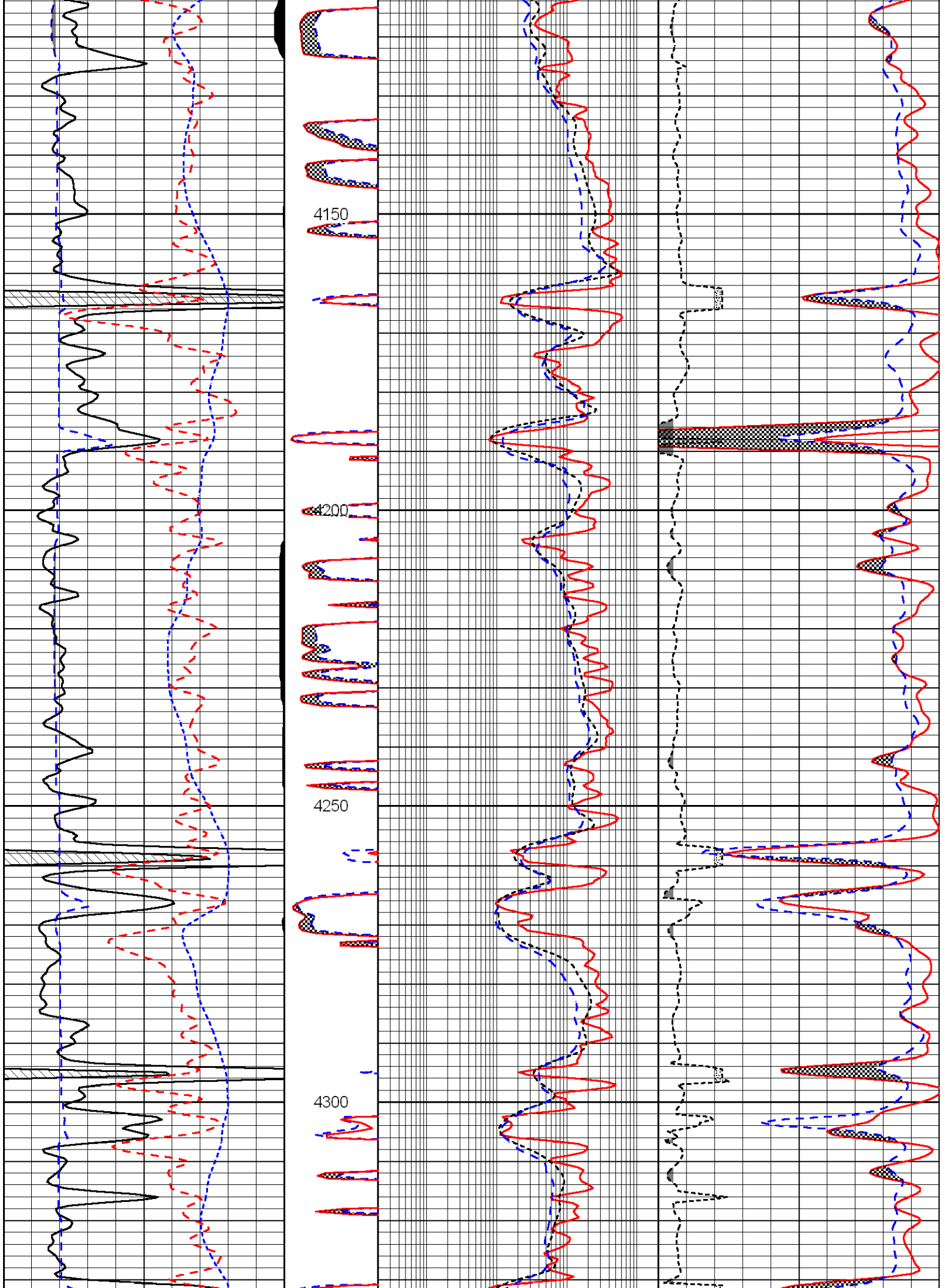
Database File: newgulf042512hd.db  
 Dataset Pathname: dil/ngstack  
 Presentation Format: jamex  
 Dataset Creation: Wed Apr 25 20:09:12 2012  
 Charted by: Depth in Feet scaled 1:240

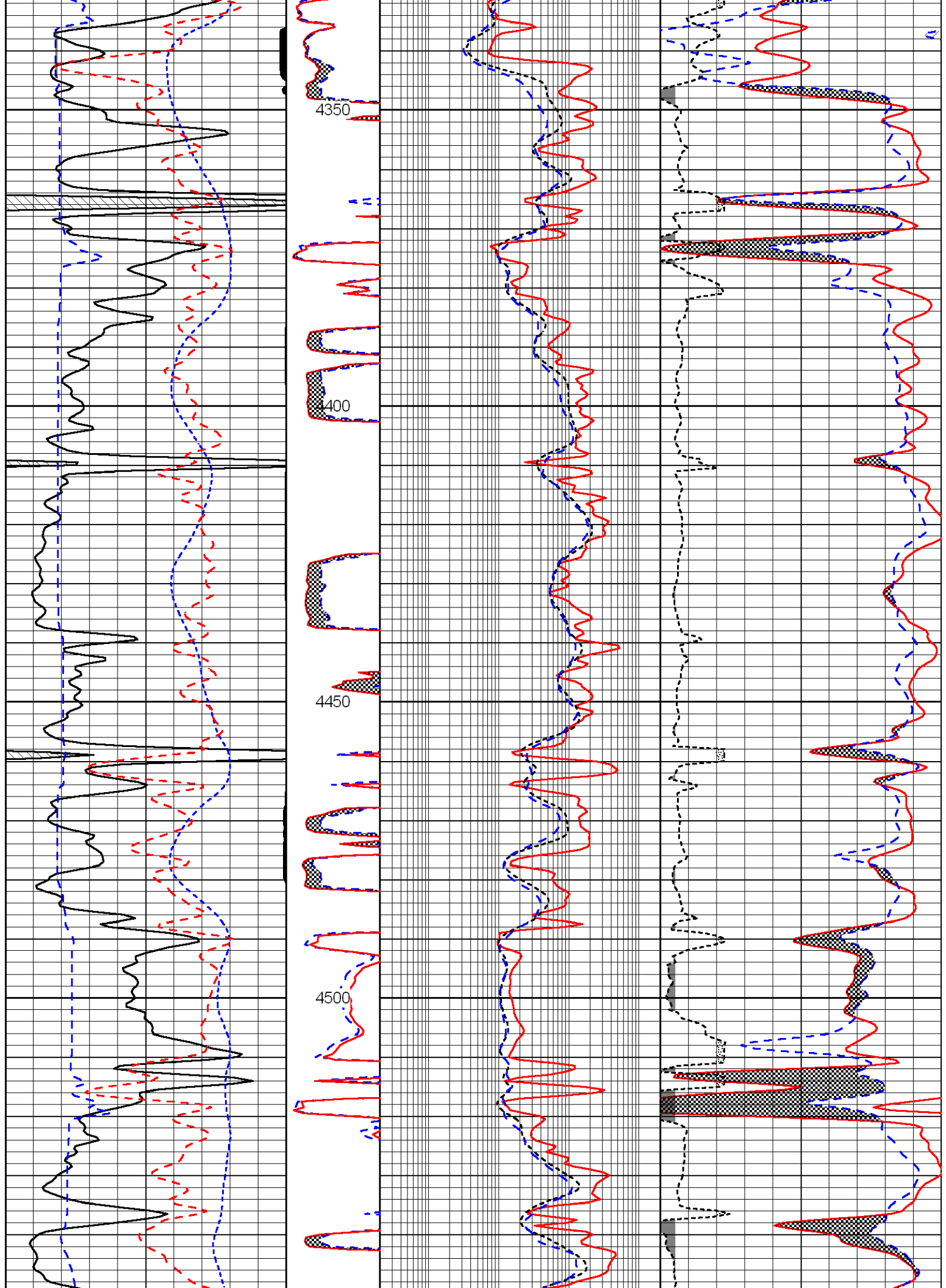
0	Gamma Ray	150	0	MN	20	0.2	Shallow Guard	0	2000	30	Density Porosity	0
150	GR	300	0	MI	20	0.2	Medium Induction	0	2000	30	Neutron Porosity	0
6	Caliper (GAPI)	16				0.2	Deep Induction	0	2000	2.65	dga	3.75
2.875	DCAL (GAPI)	7.875										
-200	SP	0										
-160	Rxo/Rt	40										

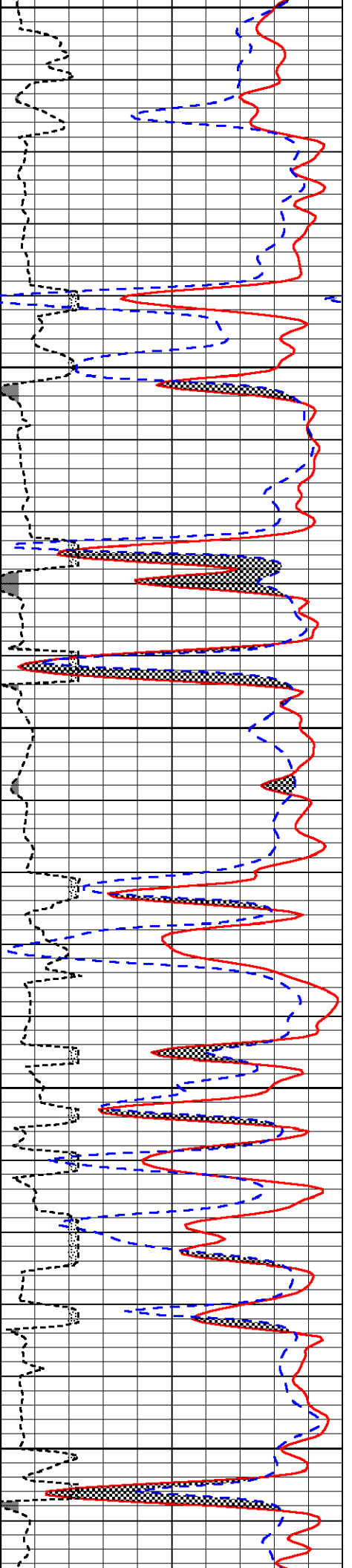
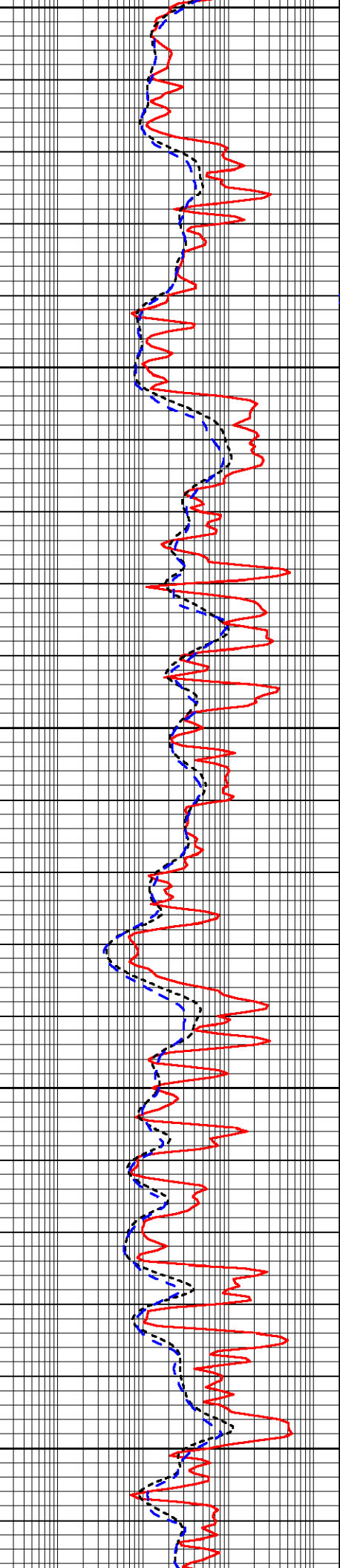
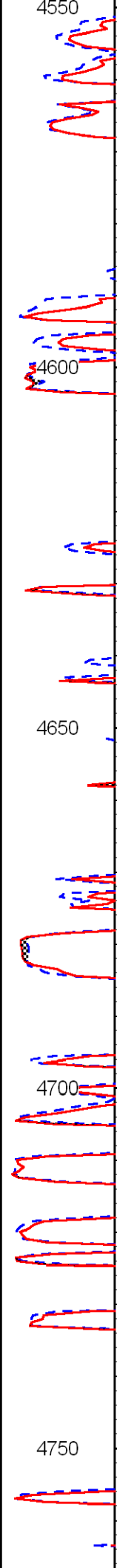
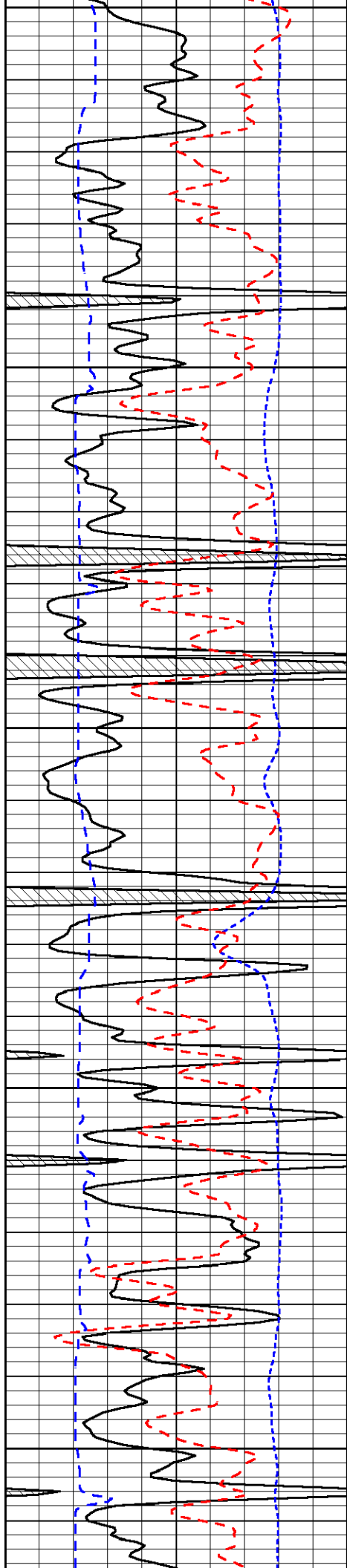












4550

4600

4650

4700

4750

