

# LOG-TECH



DIGITAL LOG (785) 625-3858

## Microresistivity Log

API No. 15-171-20,874-00-00

Company **New Gulf Operating, LLC.**  
 Well **David #1-32**  
 Field **N/A**  
 County **Scott** State **Kansas**

Location **1190' FNL & 1252' FWL**

Sec: **32** Twp: **17 S** Rge: **34 W**

Other Services  
 CNL/CDL  
 DIL

Elevation  
 K.B. 3160  
 D.F. 3150  
 G.L. 3150

Permanent Datum	Ground Level	Elevation 3150
Log Measured From	Kelly Bushing	10 Ft. Above Perm. Datum
Drilling Measured From	Kelly Bushing	
Date		4/25/2012
Run Number	Two	
Depth Driller	5080	
Depth Logger	5078	
Bottom Logged Interval	5077	
Top Log Interval	3500	
Casing Driller	8.625 @ 249	
Casing Logger	249	
Bit Size	7.875	
Type Fluid in Hole	Chemical	
Salinity, ppm CL	5,000	
Density / Viscosity	9.2	54
pH / Fluid Loss	10.5	8.8
Source of Sample	Flowline	
Rm @ Meas. Temp	.65 @ 70	
Rmf @ Meas. Temp	.49 @ 70	
Rmc @ Meas. Temp	.88 @ 70	
Source of Rmf / Rmc	Charts	
Rm @ BHT	.35 @ 129	
Operating Rig Time	4 1/2 Hours	
Max Rec. Temp. F	129	
Equipment Number	91	
Location	Havs	
Recorded By	K. Bange	
Witnessed By	Curtis Covey	Danny Birdwell

<<< Fold Here >>>

All interpretations are opinions based on inferences from electrical or other measurements and we cannot and do not guarantee the accuracy or correctness of any interpretation, and we shall not, except in the case of gross or willful negligence on our part, be liable or responsible for any loss, costs, damages, or expenses incurred or sustained by anyone resulting from any interpretation made by any of our officers, agents or employees. These interpretations are also subject to our general terms and conditions set out in our current Price Schedule.

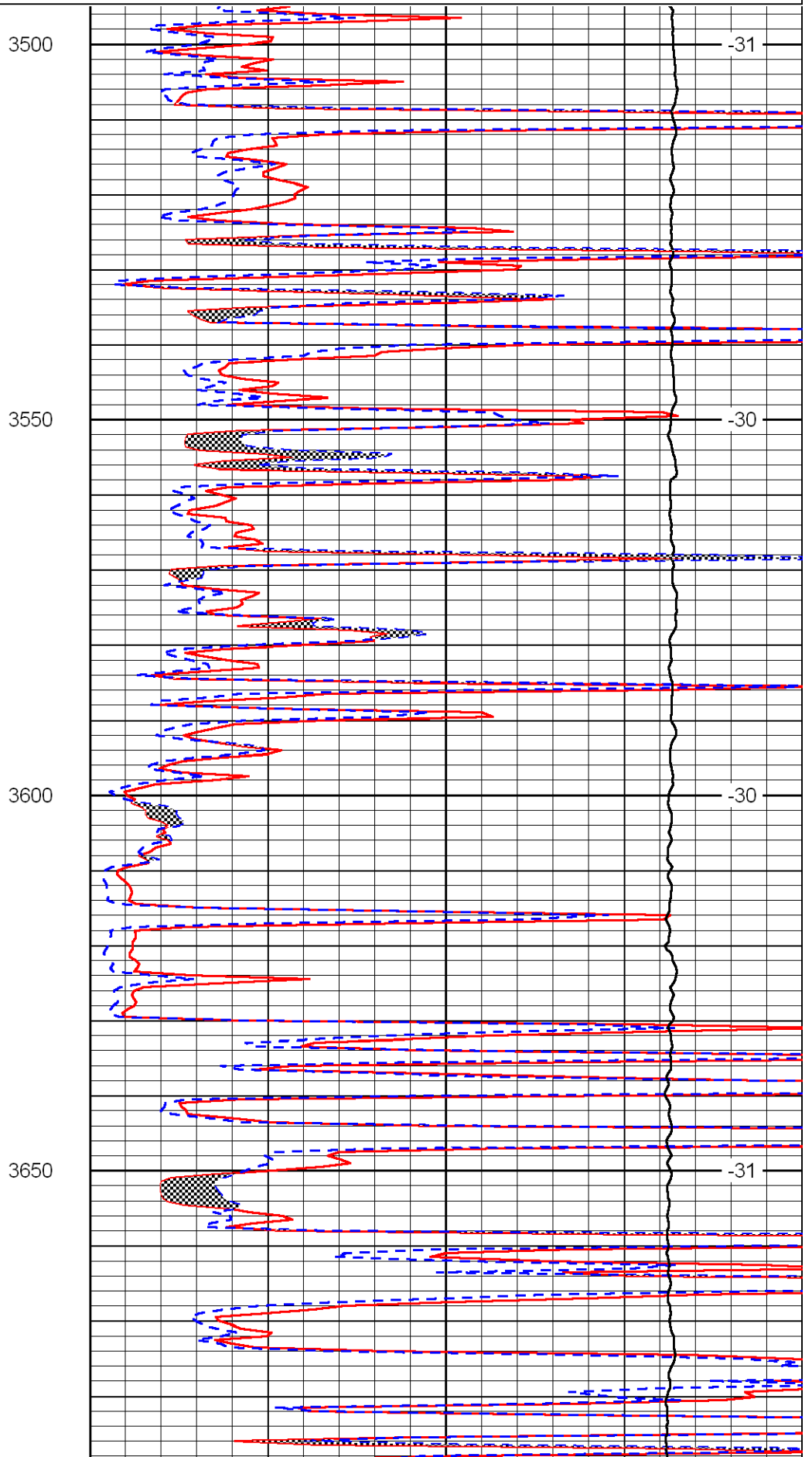
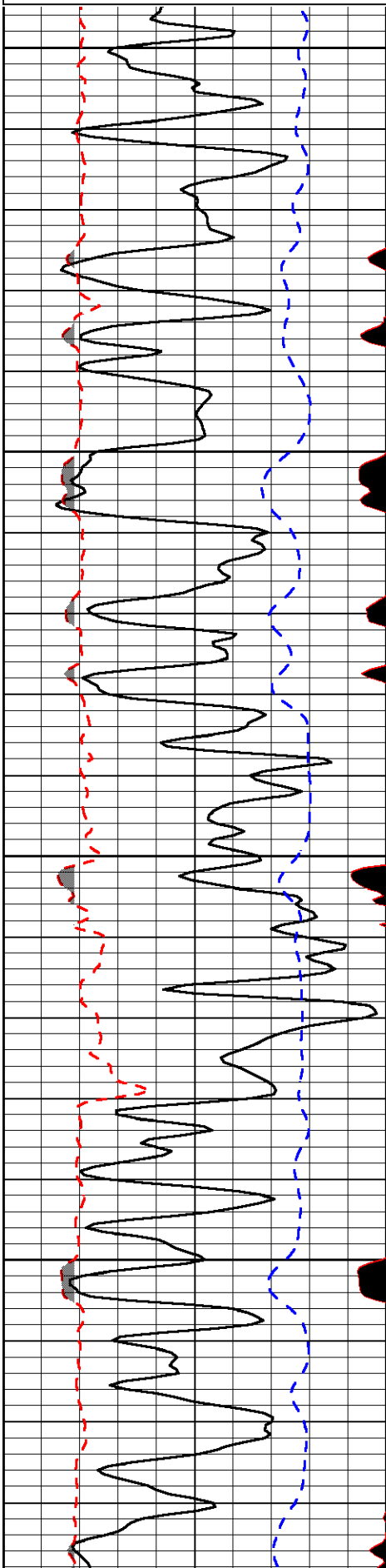
### Comments

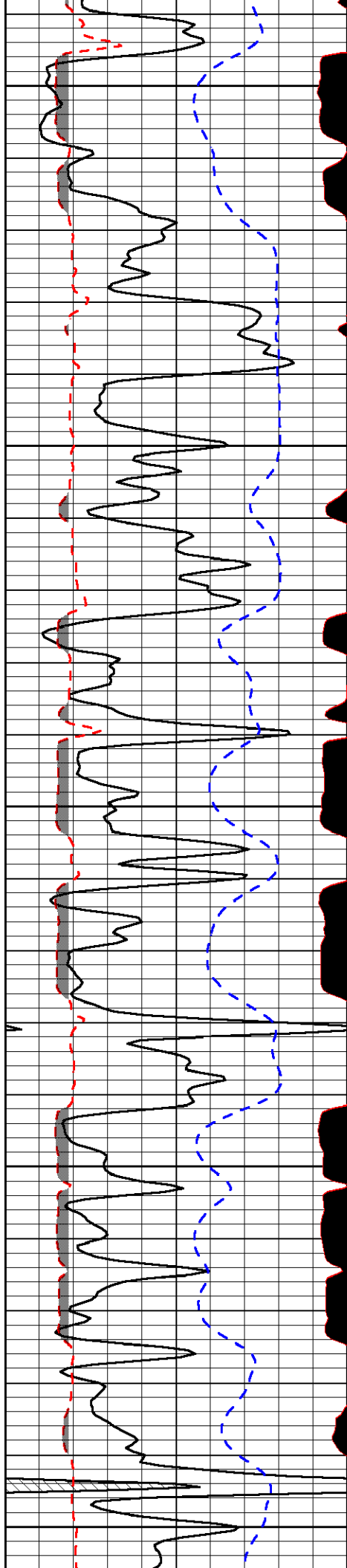
Thank you for using Log-Tech, Inc.  
 (785) 625-3858  
 Scott Cty, W to Modoc, 1 N to 'T' intersection  
 1/2 E, 3 N, 1 1/2 W, S into  
 Hit Bridge @ 253' and 2455

Database File: newgulf042512hd.db  
 Dataset Pathname: dil/ngstack  
 Presentation Format: micro  
 Dataset Creation: Wed Apr 25 20:09:12 2012  
 Charted by: Depth in Feet scaled 1:240

0	Gamma Ray	150
6	MCAL (GAPI)	16
2.875	Mud Cake (GAPI)	7.875
-200	SP	0

0	Micro Inverse 1 X 1	40
0	Micro Normal 2"	40
10000	Line Weight	0
	LSPD	





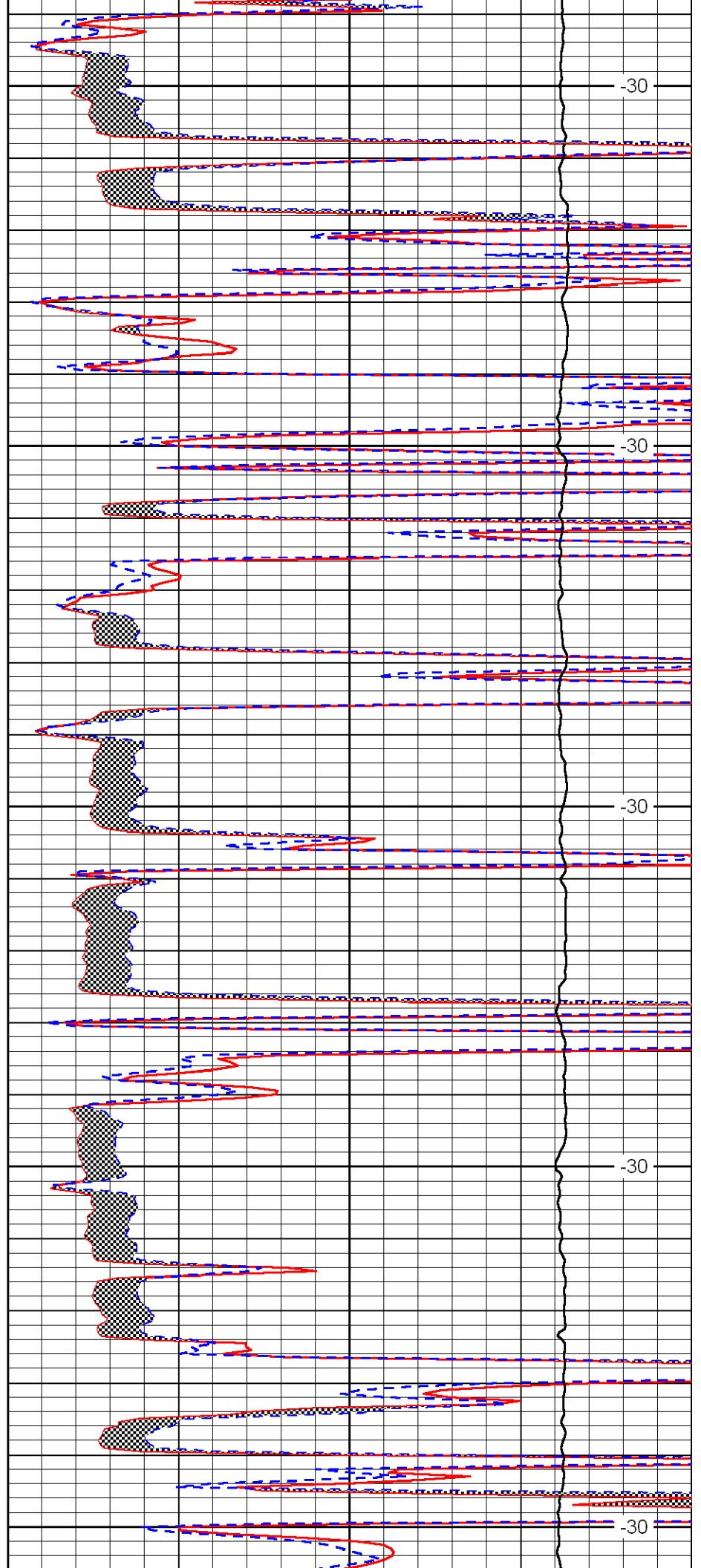
3700

3750

3800

3850

3900



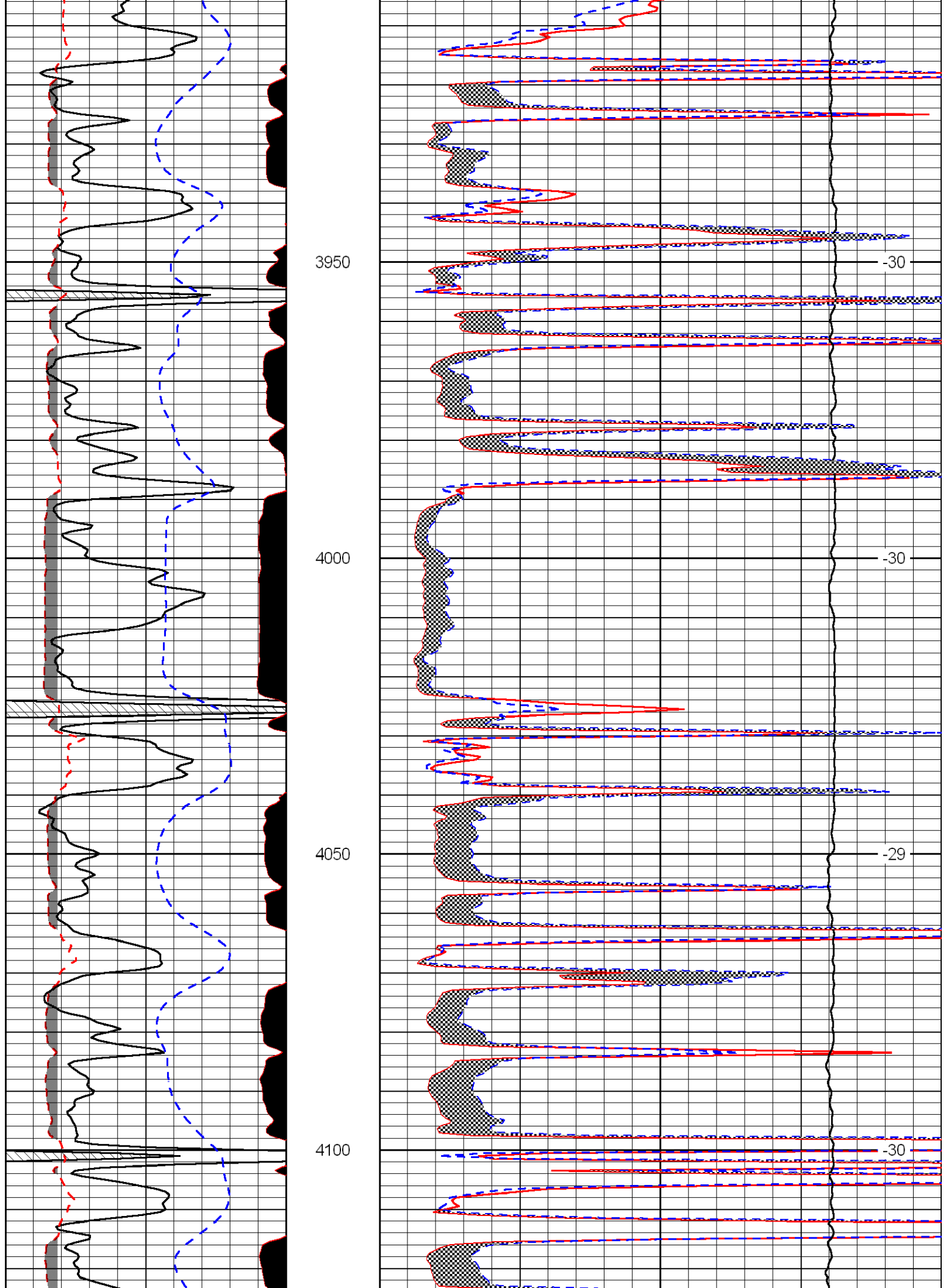
-30

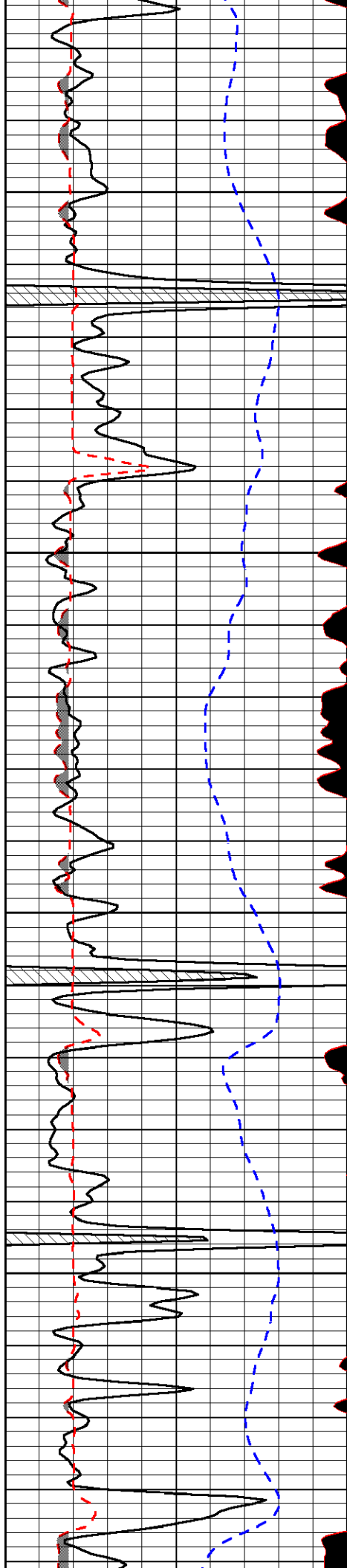
-30

-30

-30

-30



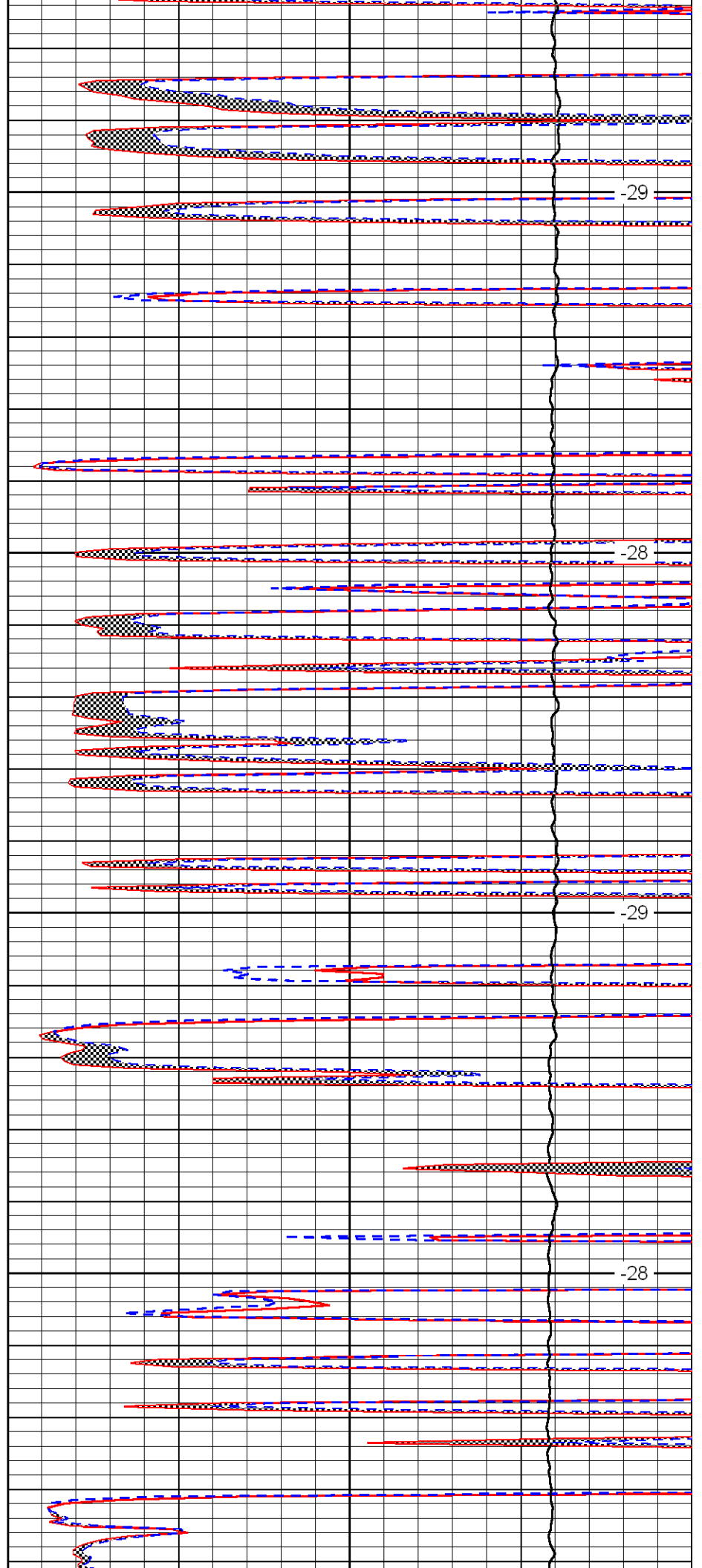


4150

4200

4250

4300

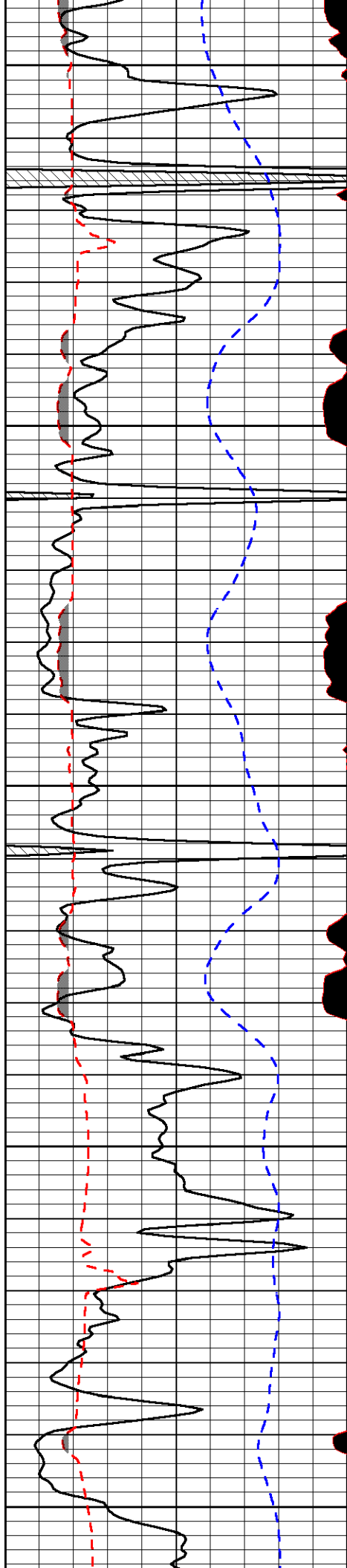


-29

-28

-29

-28



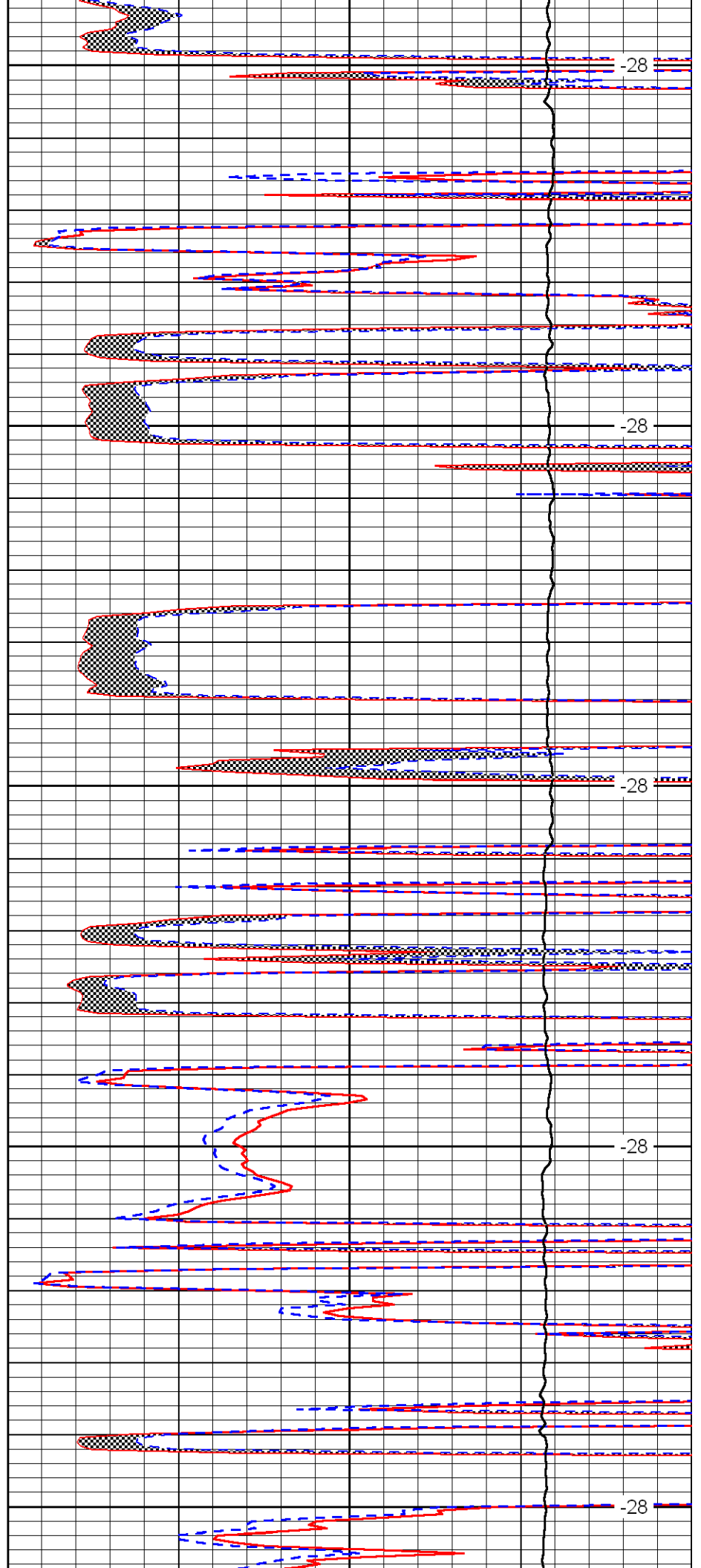
4350

4400

4450

4500

4550



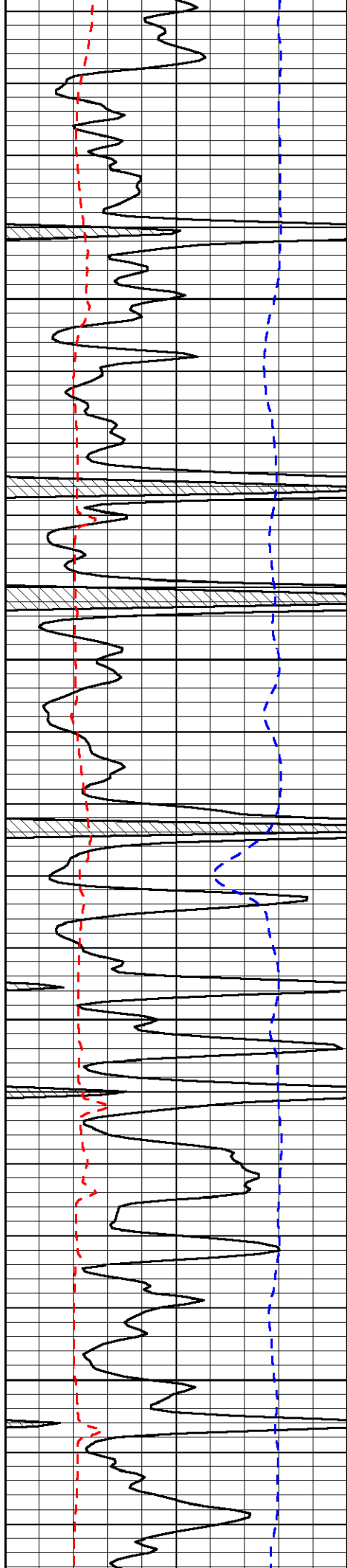
-28

-28

-28

-28

-28

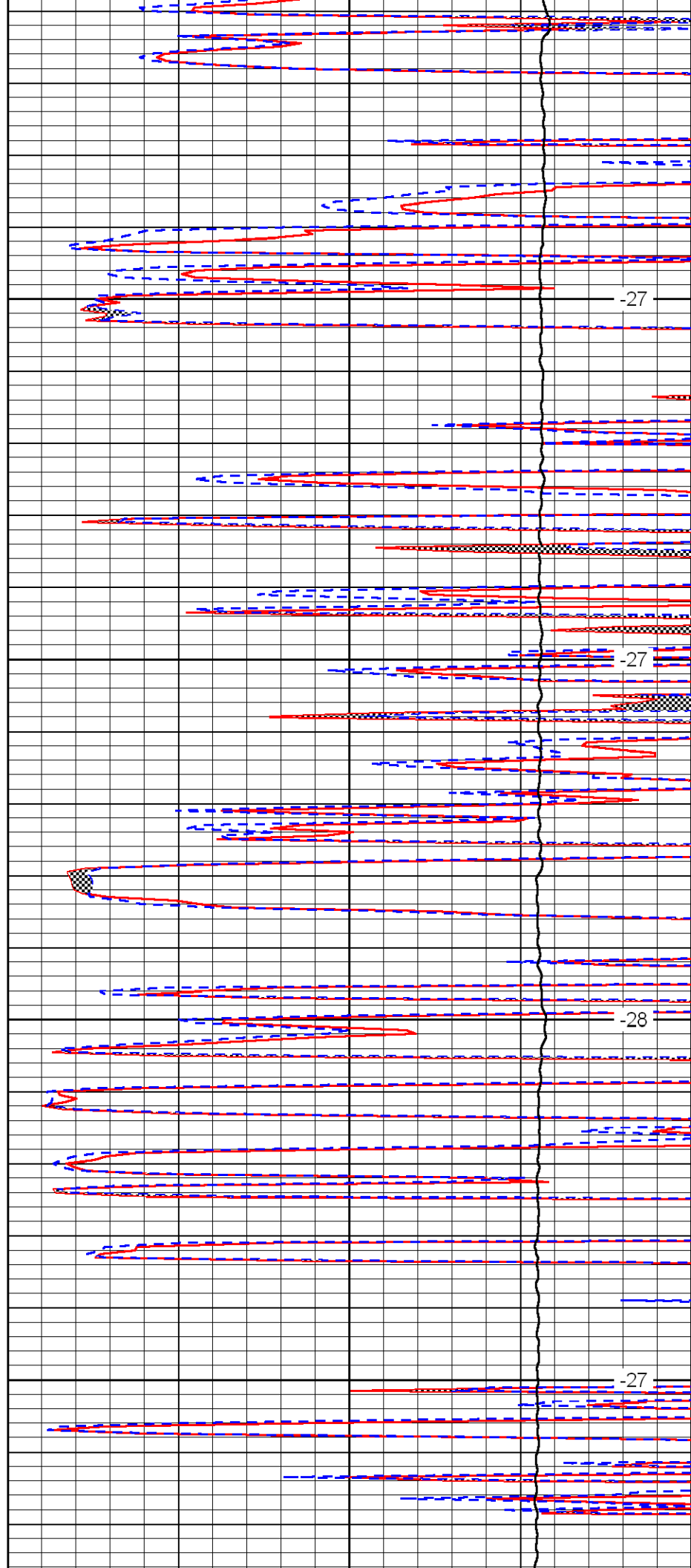


4600

4650

4700

4750

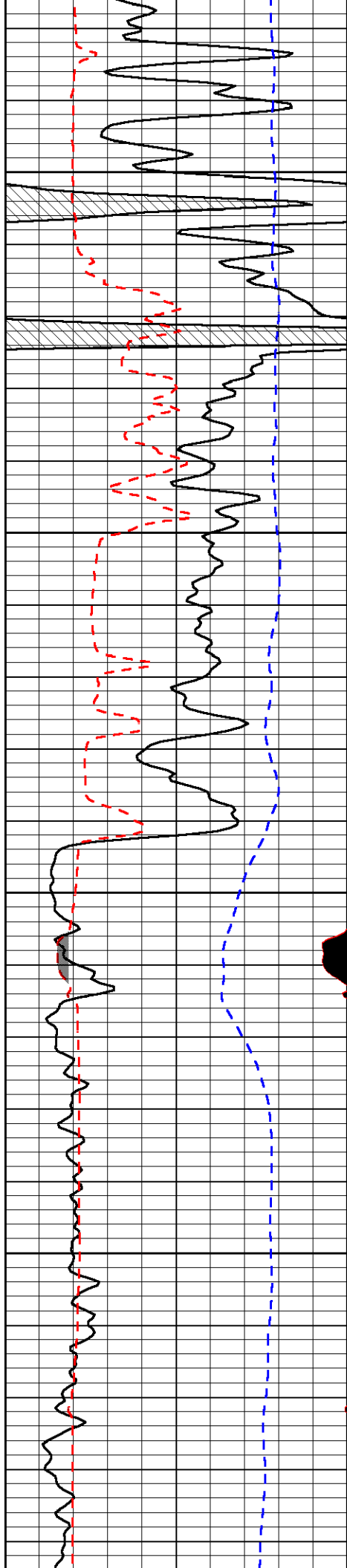


-27

-27

-28

-27

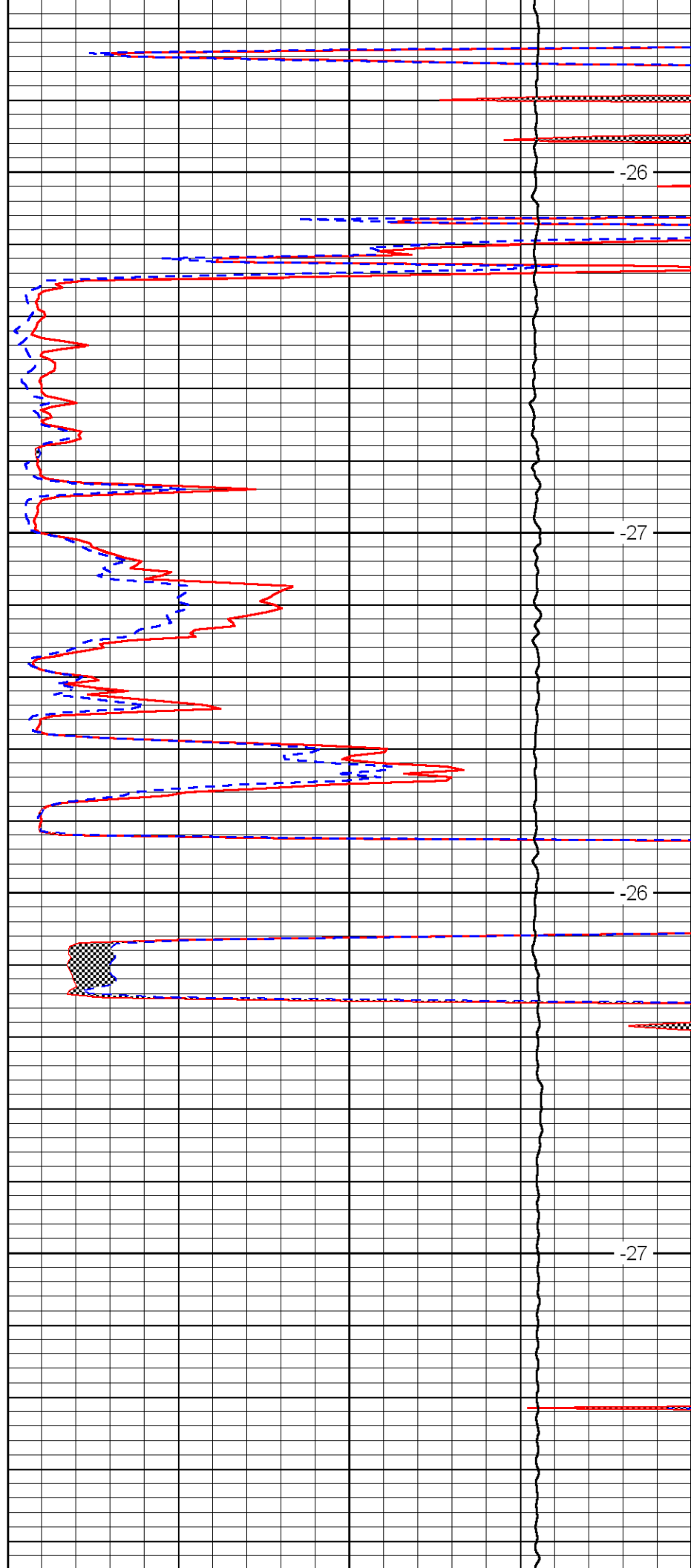


4800

4850

4900

4950



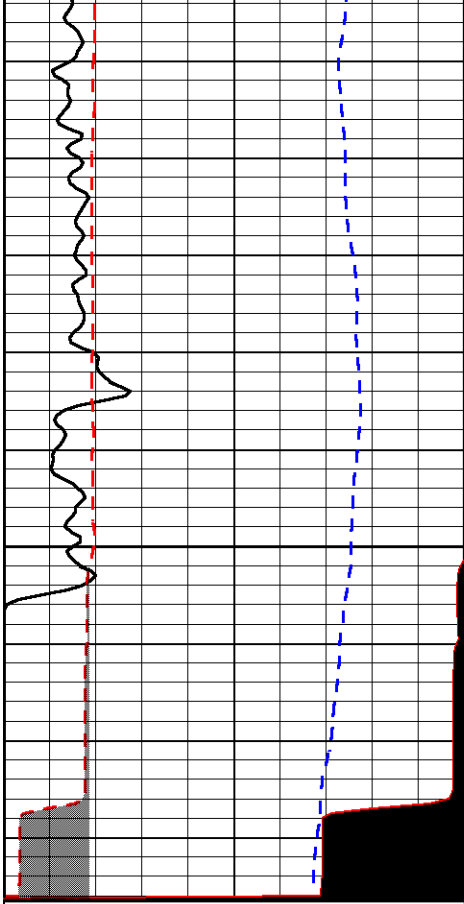
-26

-27

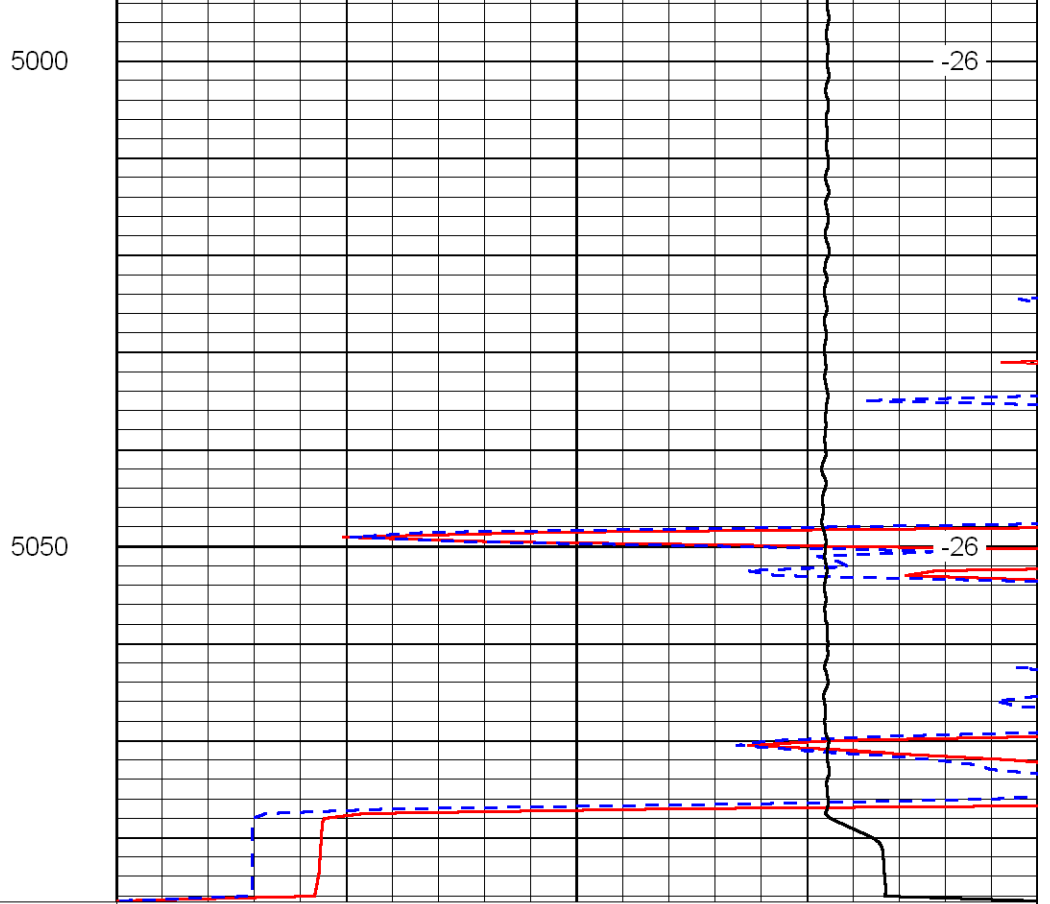
-26

-27





0	Gamma Ray	150
6	MCAL (GAPI)	16
2.875	Mud Cake (GAPI)	7.875
-200	SP	0



0	Micro Inverse 1 X 1	40
0	Micro Normal 2''	40
10000	Line Weight	0

LSPD