

LOG-TECH



DIGITAL LOG (785) 625-3858

Dual Induction Log

API No. 15-171-20,874-00-00

Company **New Gulf Operating, LLC.**
 Well **David #1-32**
 Field **N/A**
 County **Scott** State **Kansas**

Location **SE SE NW NW
 1190' FNL & 1252' FWL**

Sec: **32** Twp: **17 S** Rge: **34 W**

Other Services
 CNL/CDL
 MEL

Permanent Datum **Ground Level** Elevation **3150**
 Log Measured From **Kelly Bushing** 10 Ft. Above Perm. Datum
 Drilling Measured From **Kelly Bushing**

Elevation
 K.B. 3160
 D.F. 3150
 G.L. 3150

Date	4/25/2012
Run Number	One
Depth Driller	5080
Depth Logger	5078
Bottom Logged Interval	5077
Top Log Interval	200
Casing Driller	8.625 @ 249
Casing Logger	249
Bit Size	7.875
Type Fluid in Hole	Chemical
Salinity, ppm CL	5.000
Density / Viscosity	9.2 54
pH / Fluid Loss	10.5 8.8
Source of Sample	Flowline
Rm @ Meas. Temp	.65 @ 70
Rmf @ Meas. Temp	.49 @ 70
Rmc @ Meas. Temp	.88 @ 70
Source of Rmf / Rmc	Charts
Rm @ BHT	.35 @ 129
Operating Rig Time	4 1/2 Hours
Max Rec. Temp. F	129
Equipment Number	91
Location	Havs
Recorded By	K. Bange
Witnessed By	Curtis Covey

<<< Fold Here >>>

All interpretations are opinions based on inferences from electrical or other measurements and we cannot and do not guarantee the accuracy or correctness of any interpretation, and we shall not, except in the case of gross or willful negligence on our part, be liable or responsible for any loss, costs, damages, or expenses incurred or sustained by anyone resulting from any interpretation made by any of our officers, agents or employees. These interpretations are also subject to our general terms and conditions set out in our current Price Schedule.

Comments

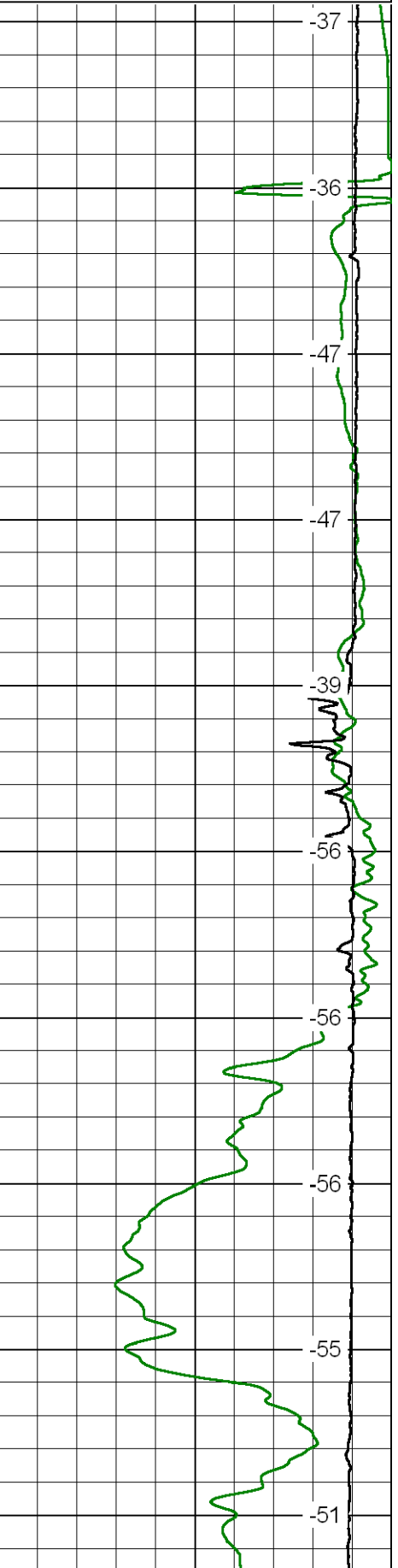
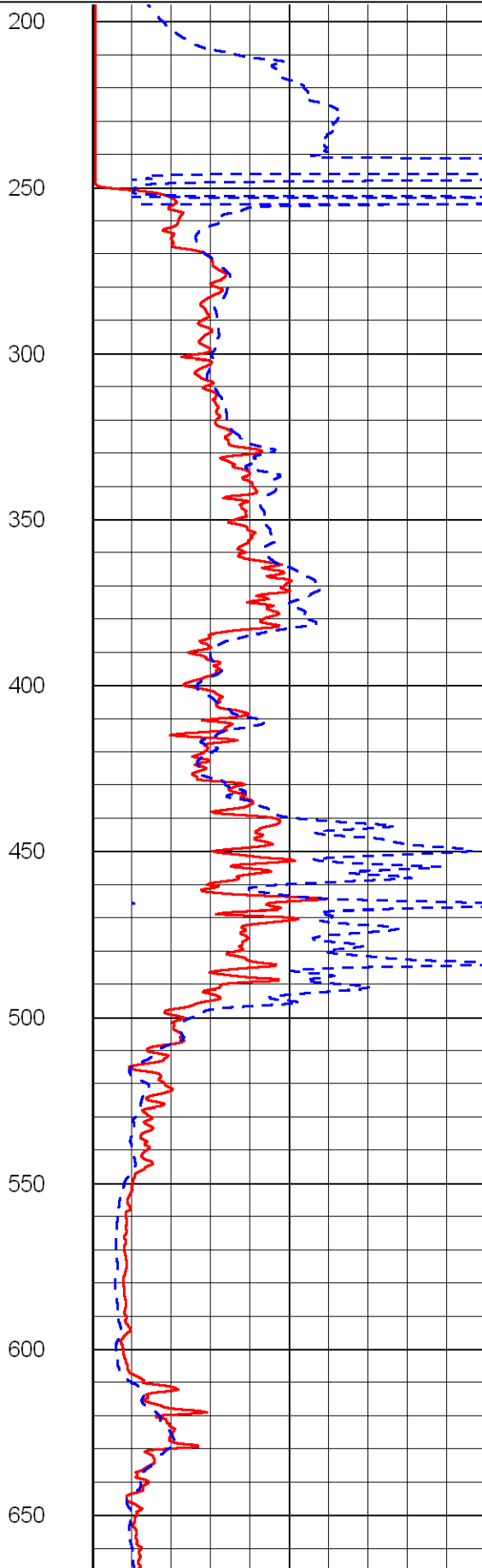
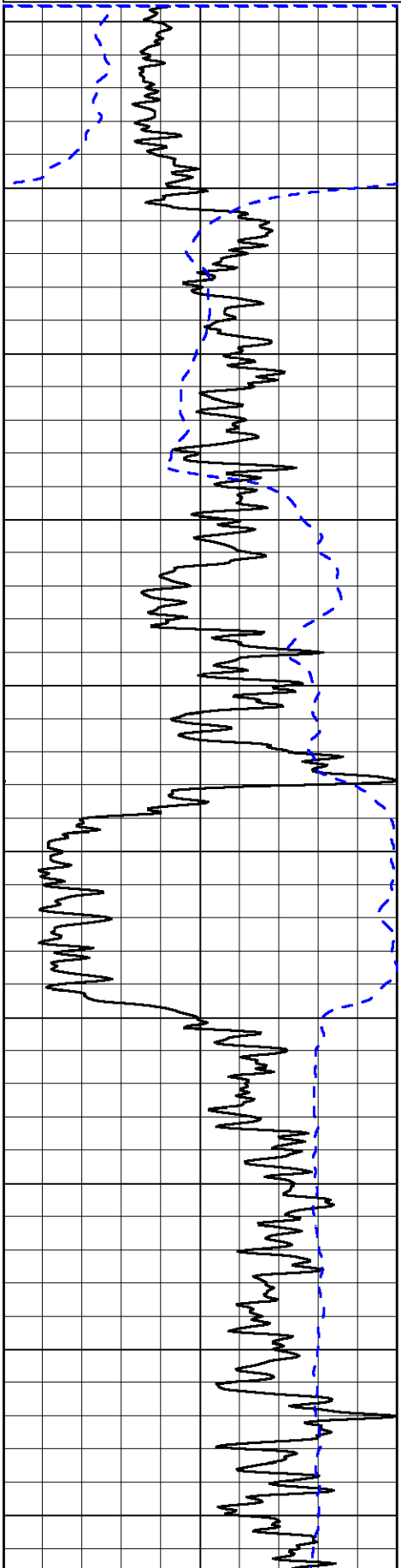
Thank you for using Log-Tech, Inc.
 (785) 625-3858
 Scott Cty, W to Modoc, 1 N to 'T' intersection
 1/2 E, 3 N, 1 1/2 W, S into
 Hit Bridge @ 253' and 2455

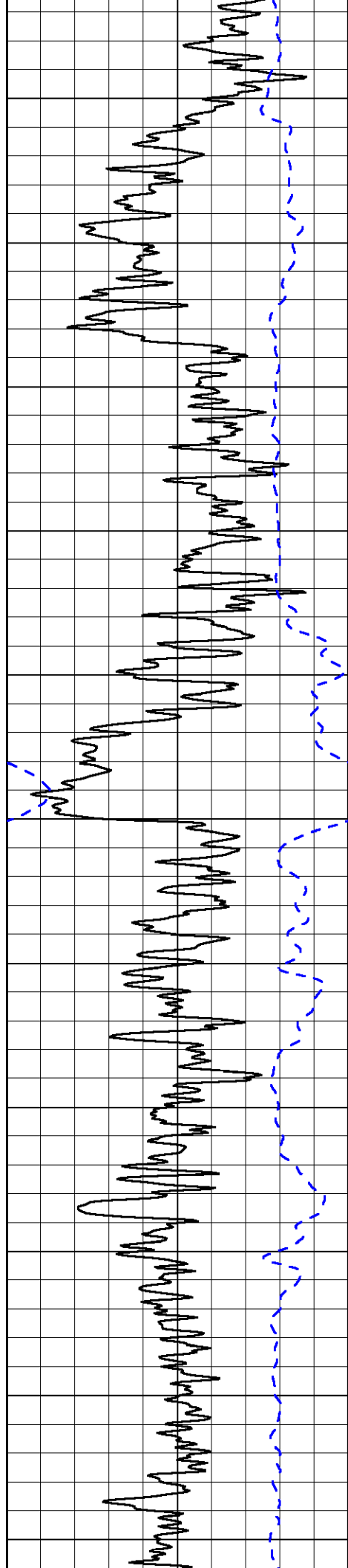
Database File: newgulf042512hd.db
 Dataset Pathname: dil/ngstack
 Presentation Format: dil2in
 Dataset Creation: Wed Apr 25 20:09:12 2012
 Charted by: Depth in Feet scaled 1:600

0 Gamma Ray 150
-200 SP 0

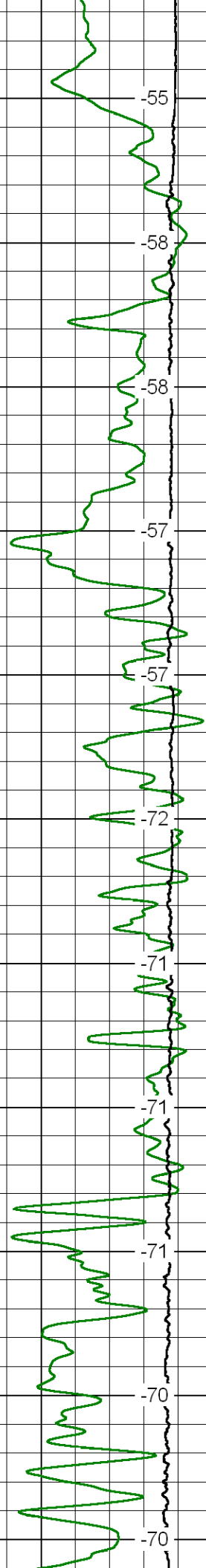
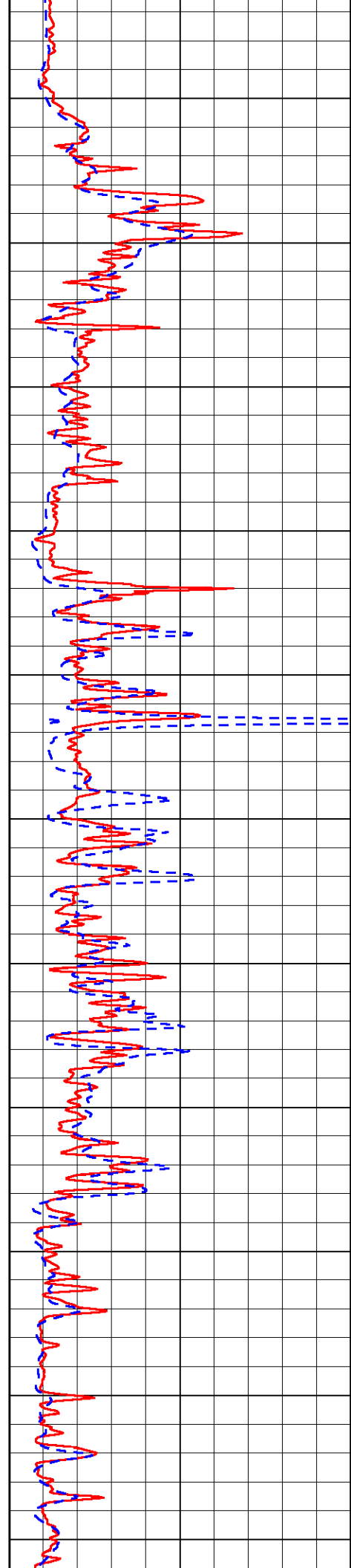
0 Shallow Resistivity 50
0 Deep Resistivity 50
1000 Conductivity 0
15000 Line Tension 0
50 Shallow Resistivity 500
50 Deep Resistivity 500

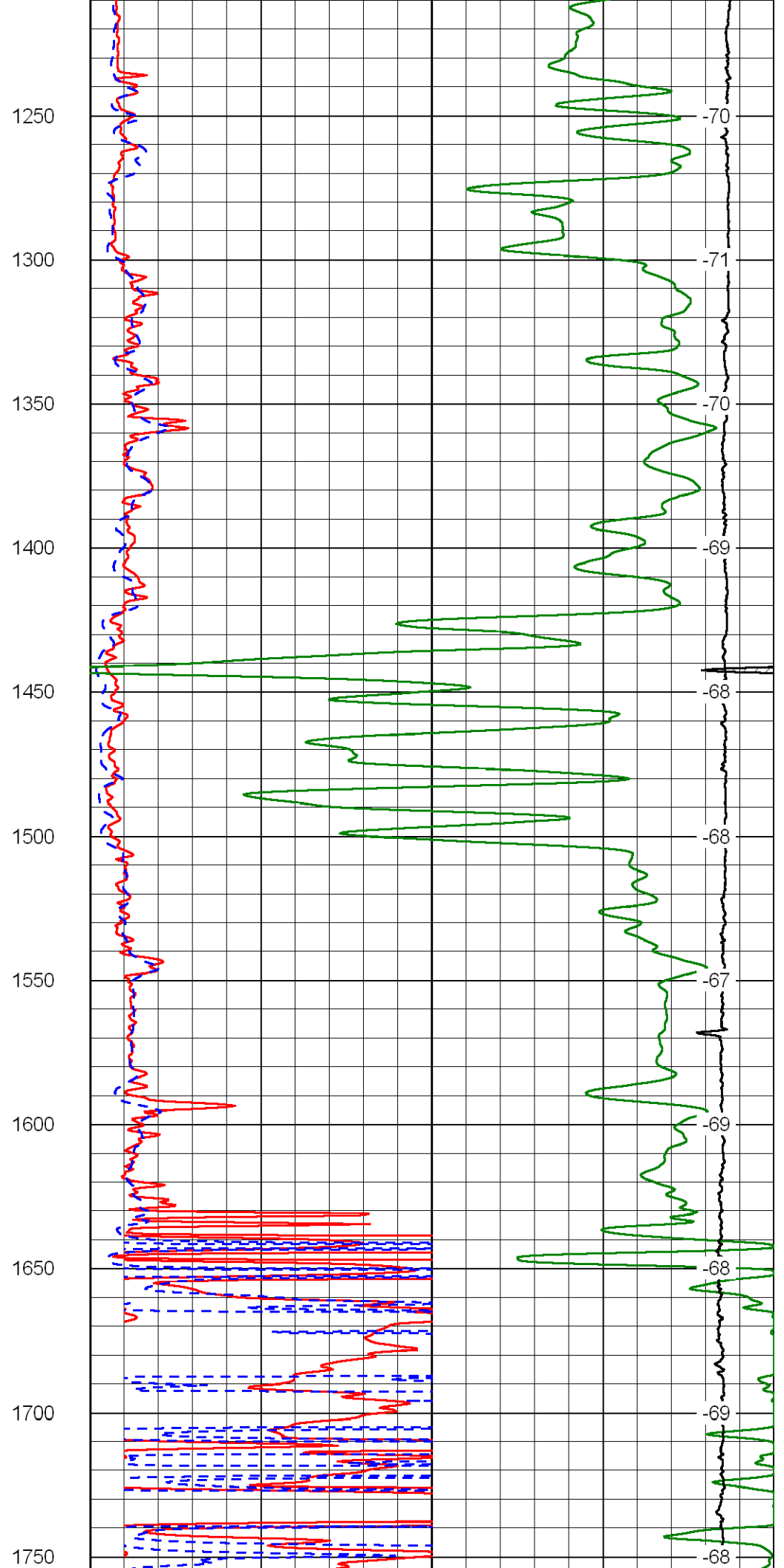
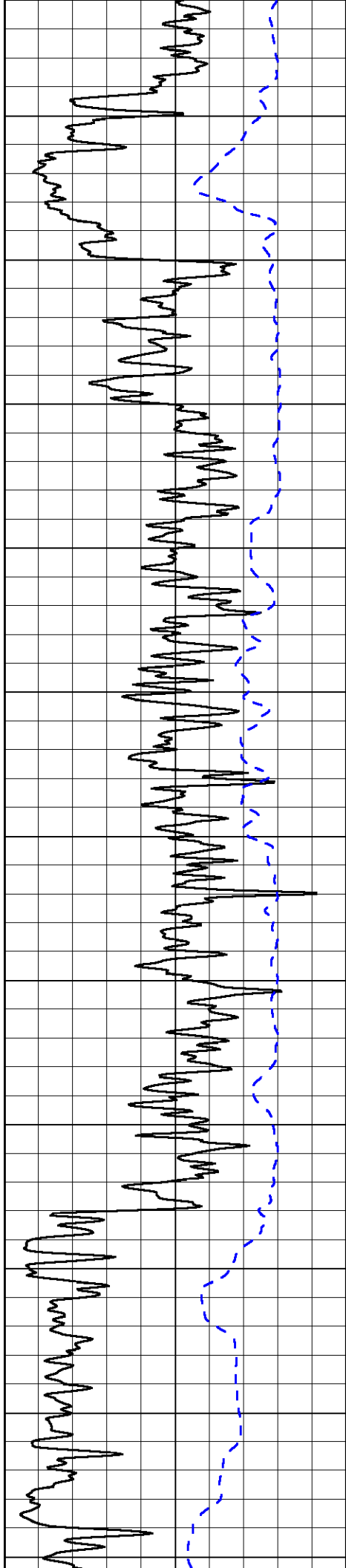
LSPD

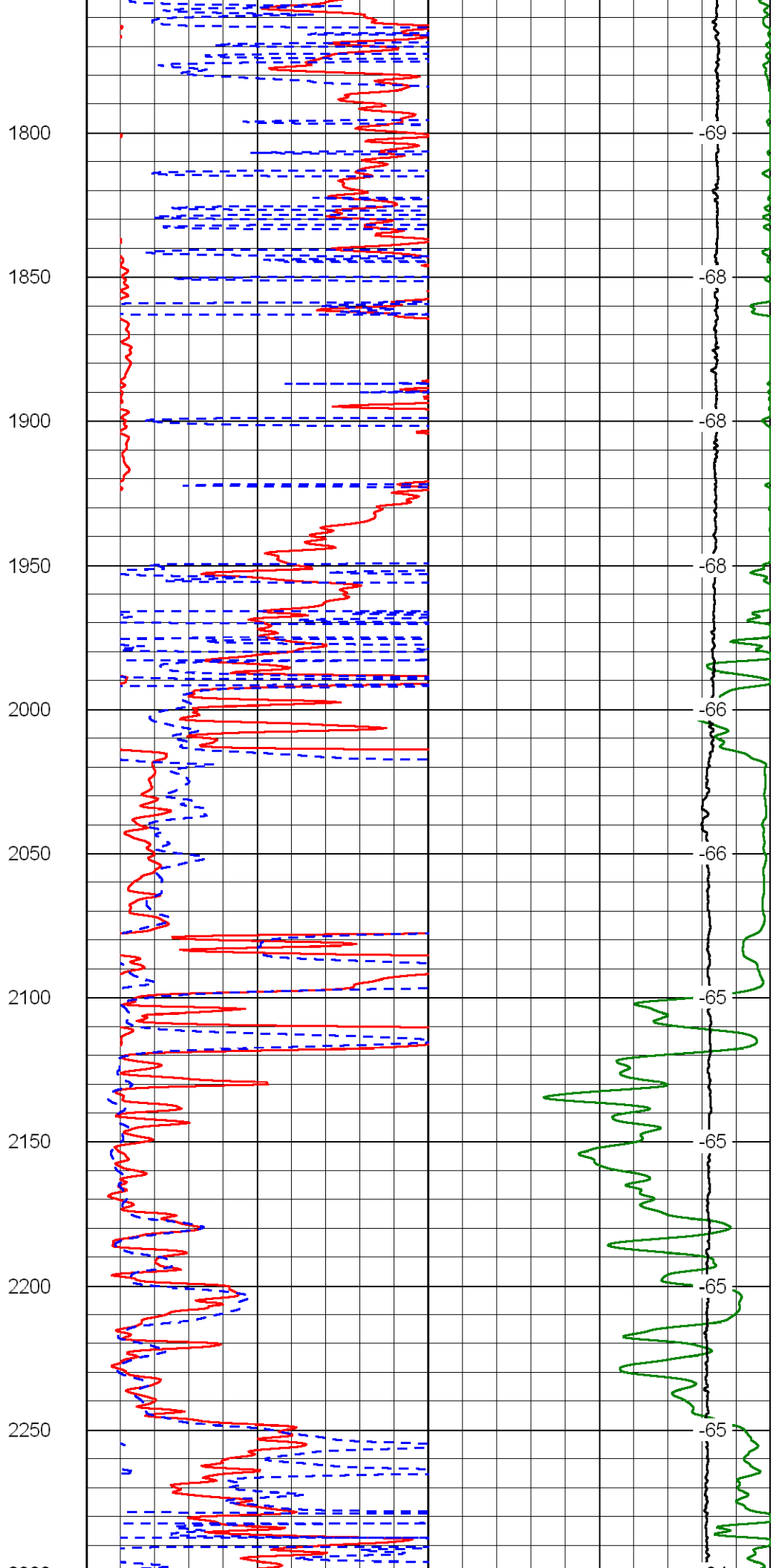
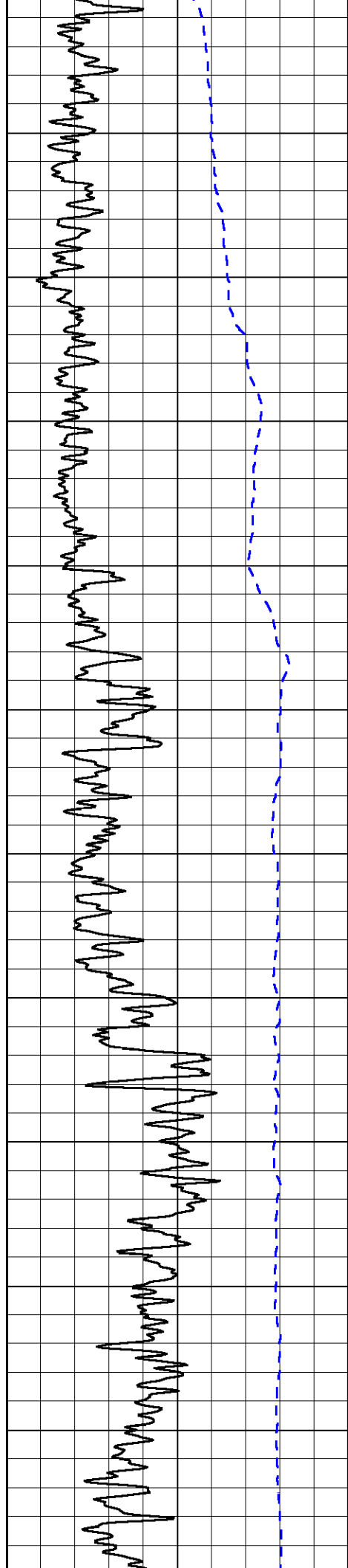


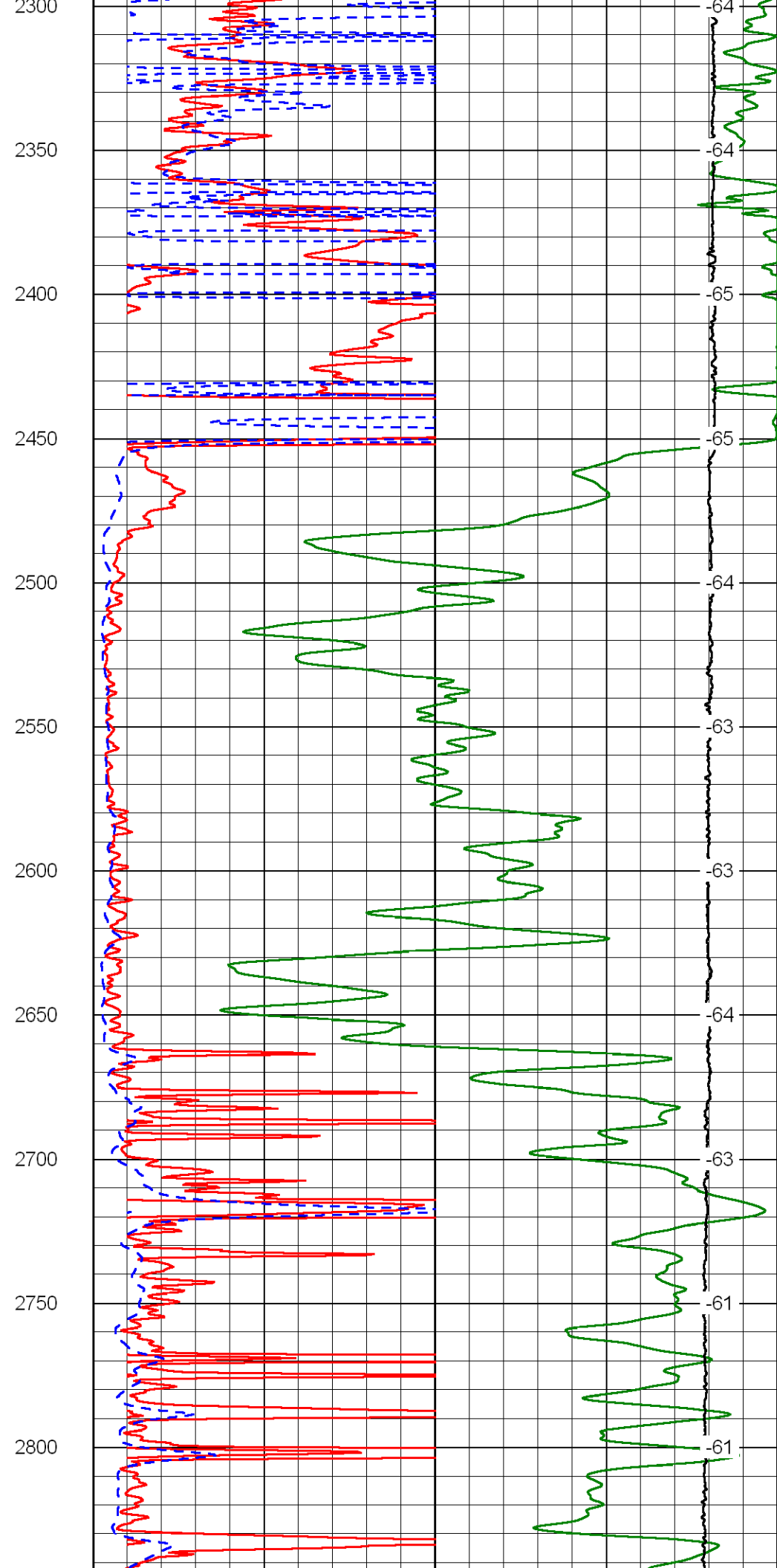
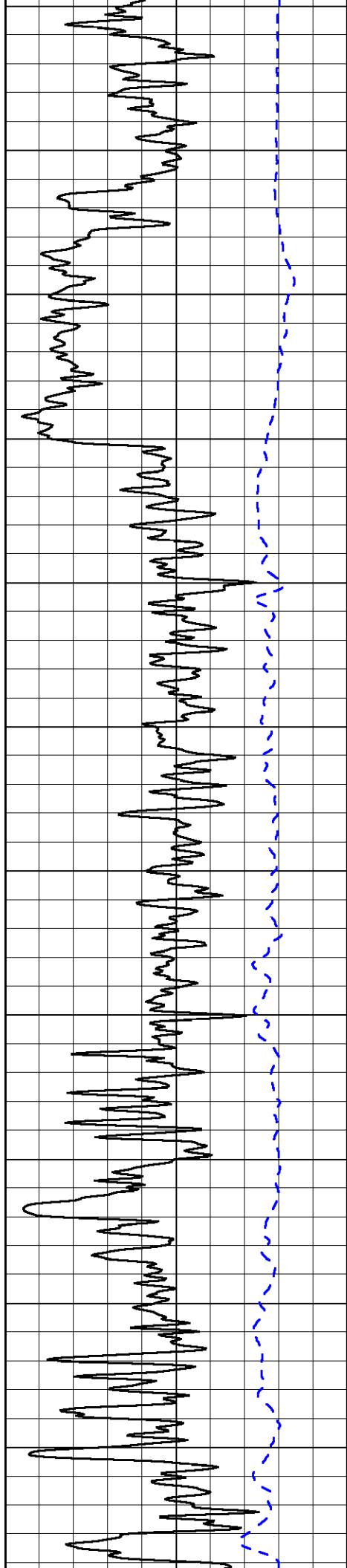


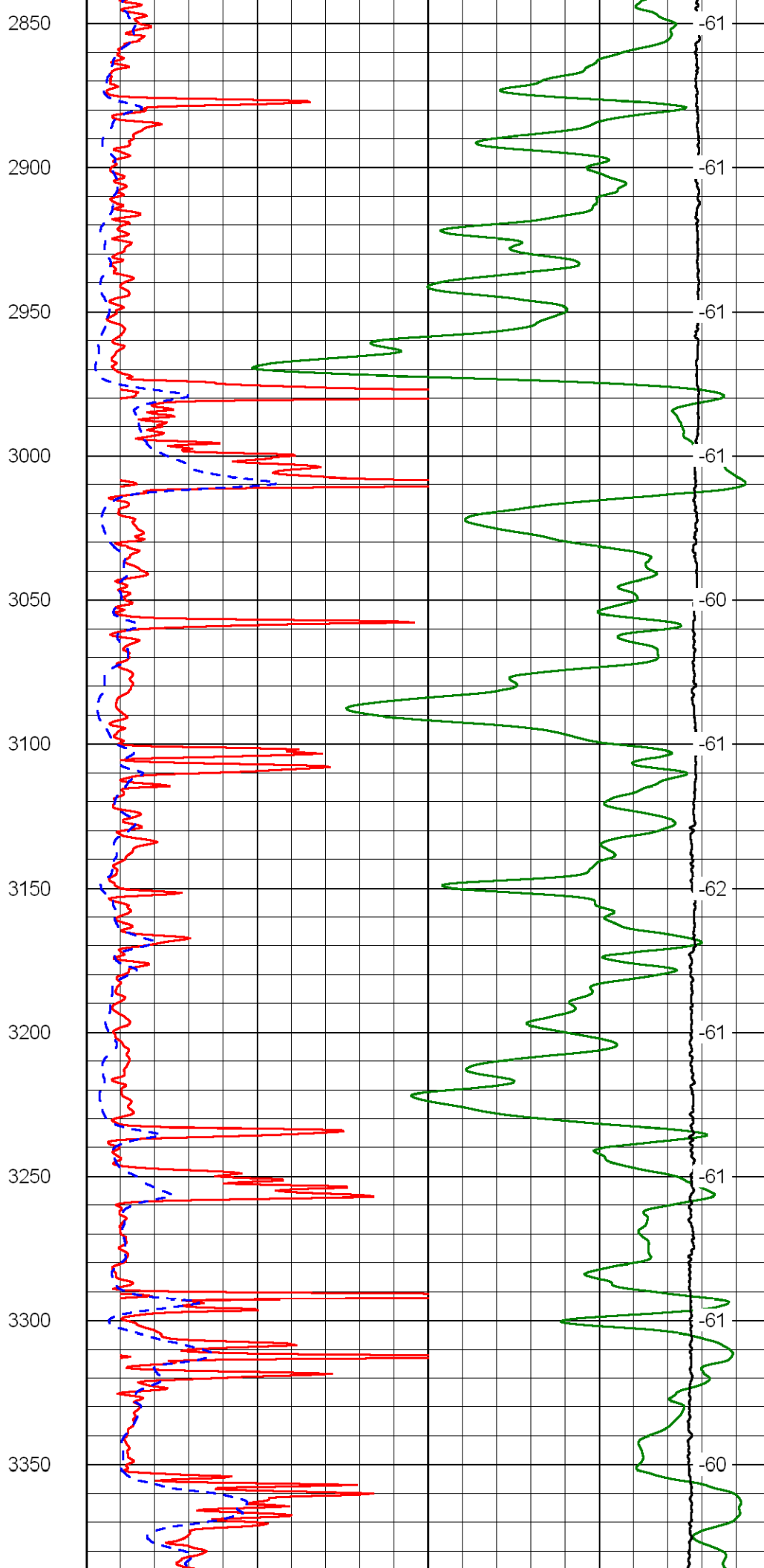
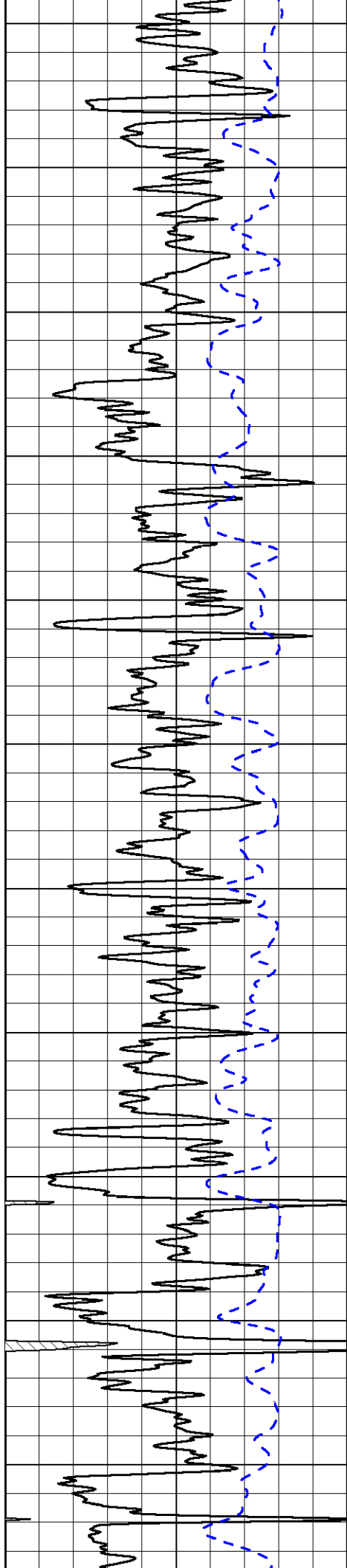
700
750
800
850
900
950
1000
1050
1100
1150
1200

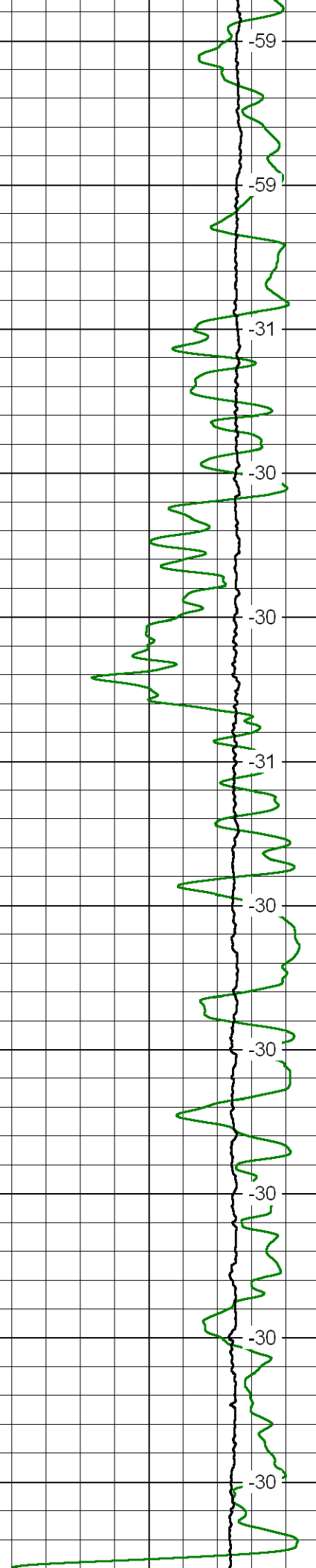
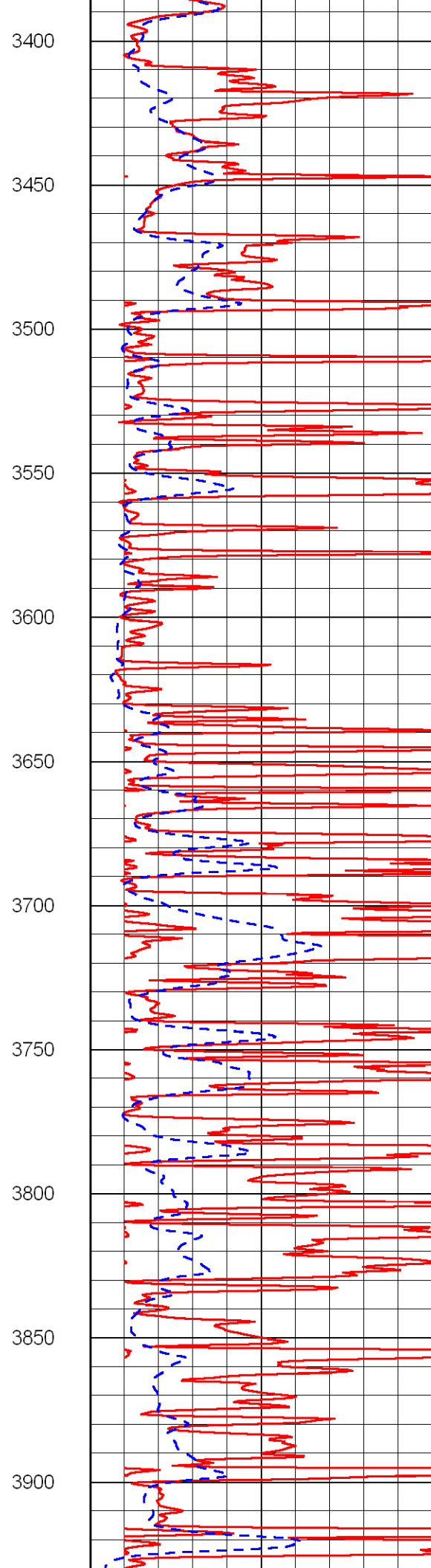
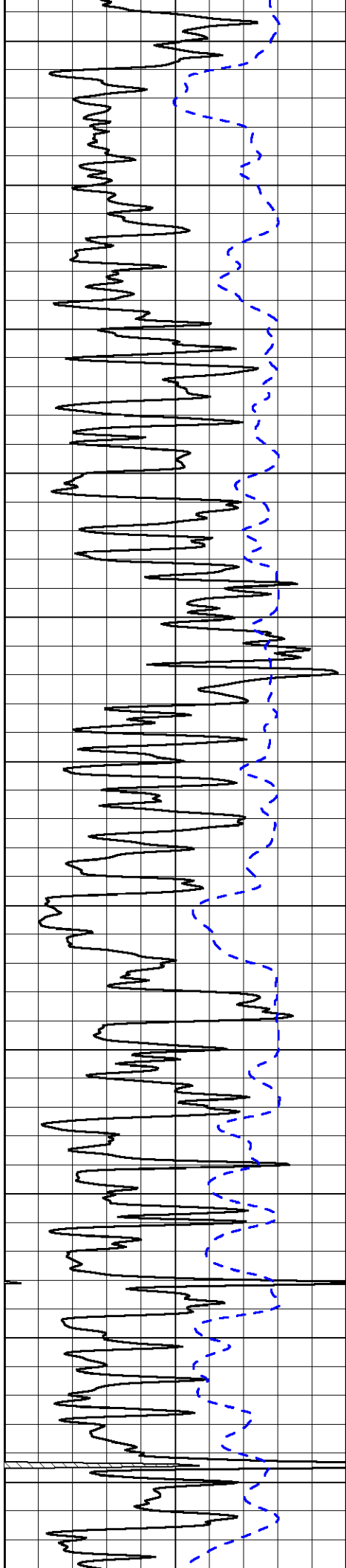


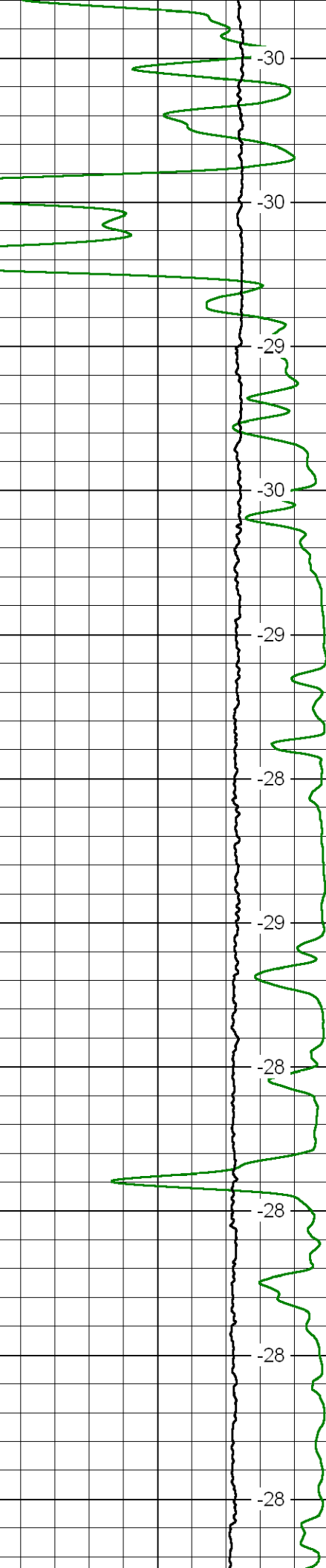
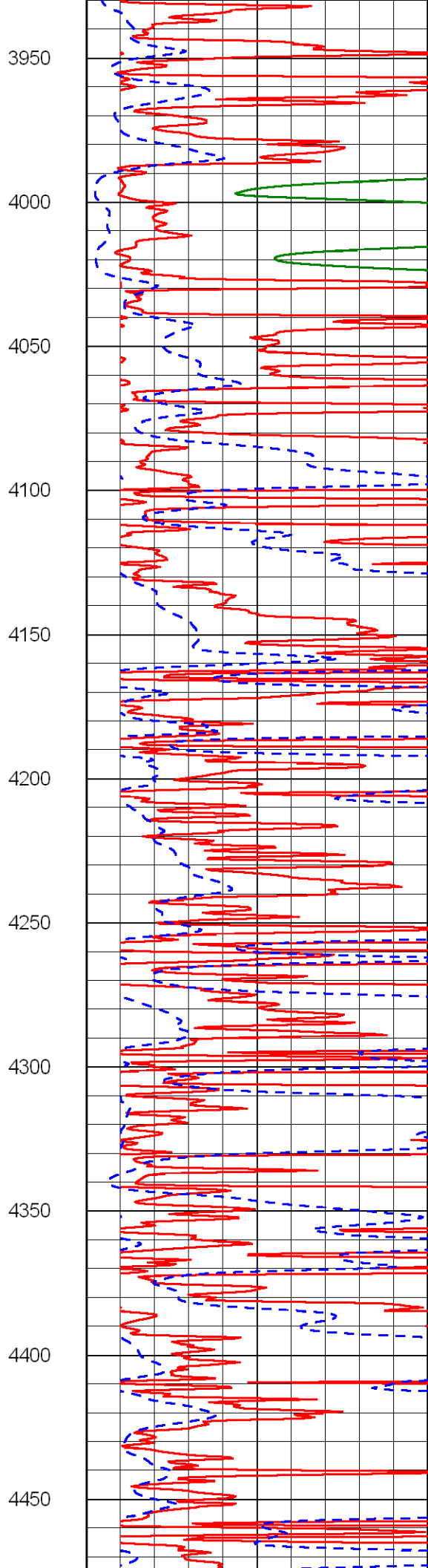
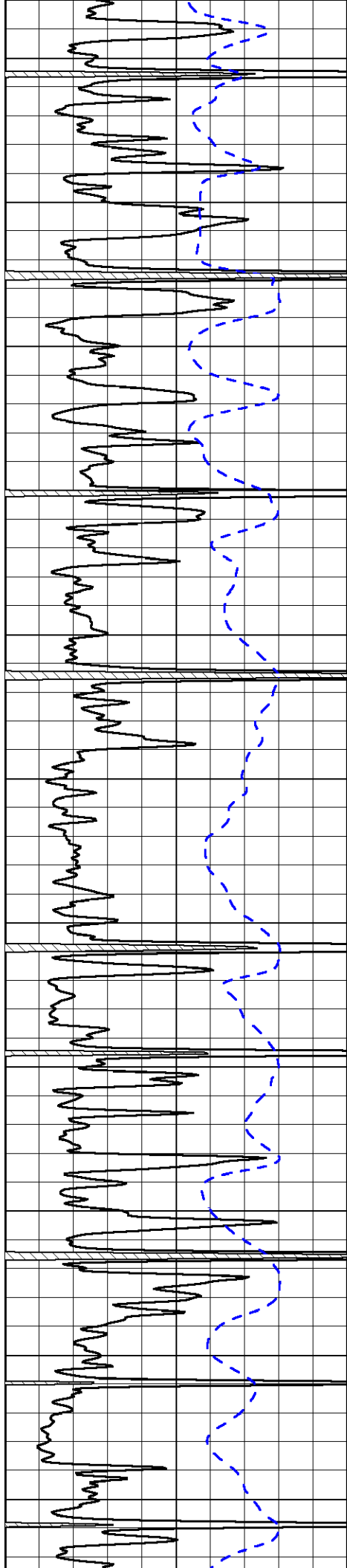


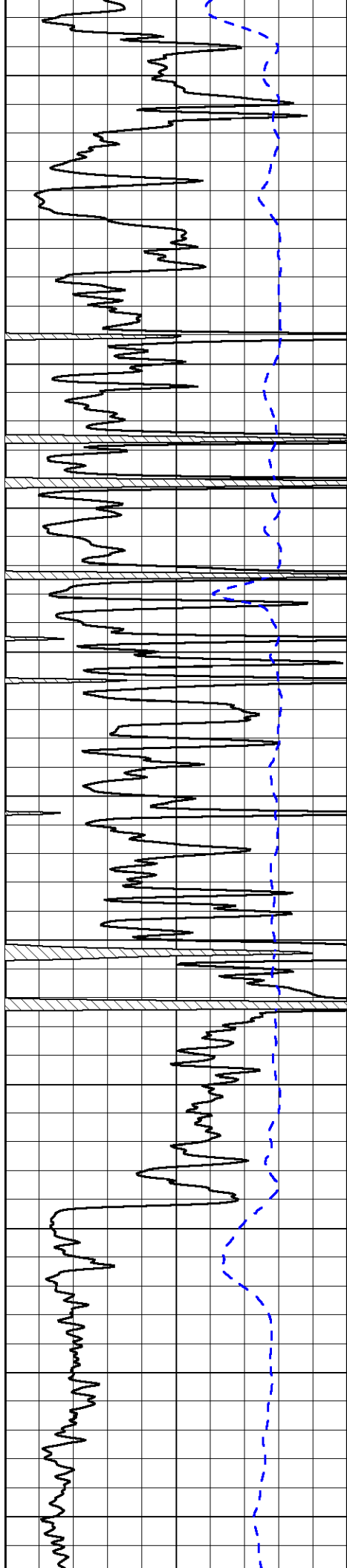












4500

4550

4600

4650

4700

4750

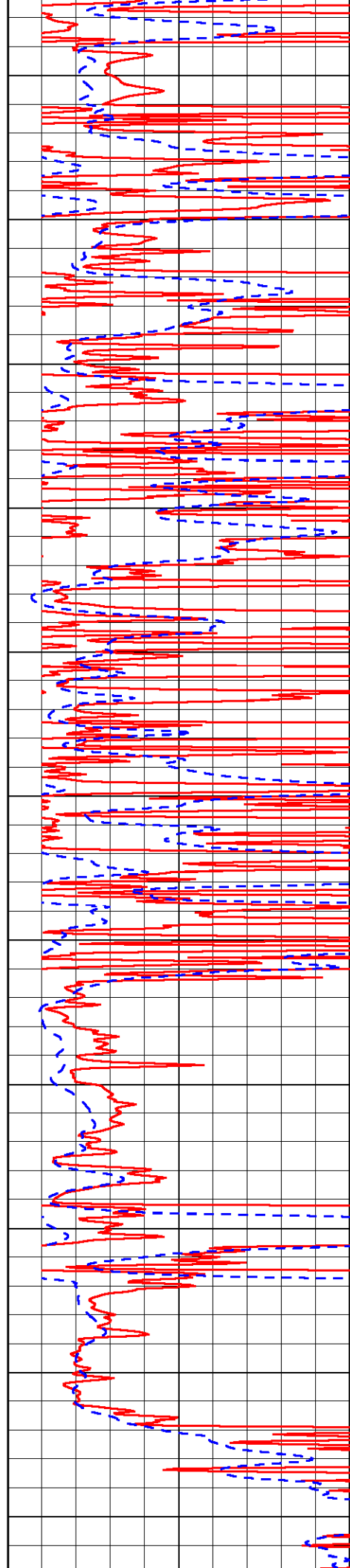
4800

4850

4900

4950

5000



-28

-28

-27

-27

-28

-27

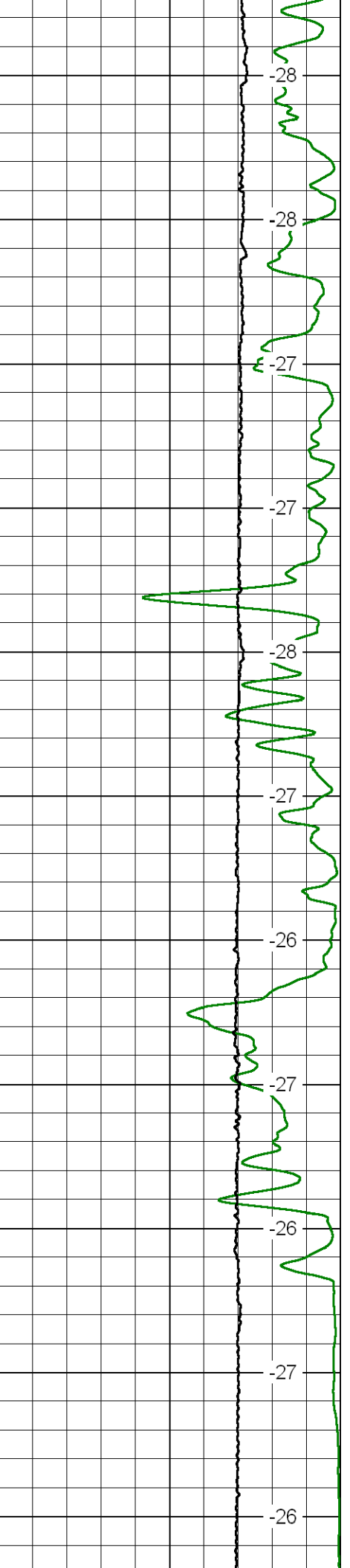
-26

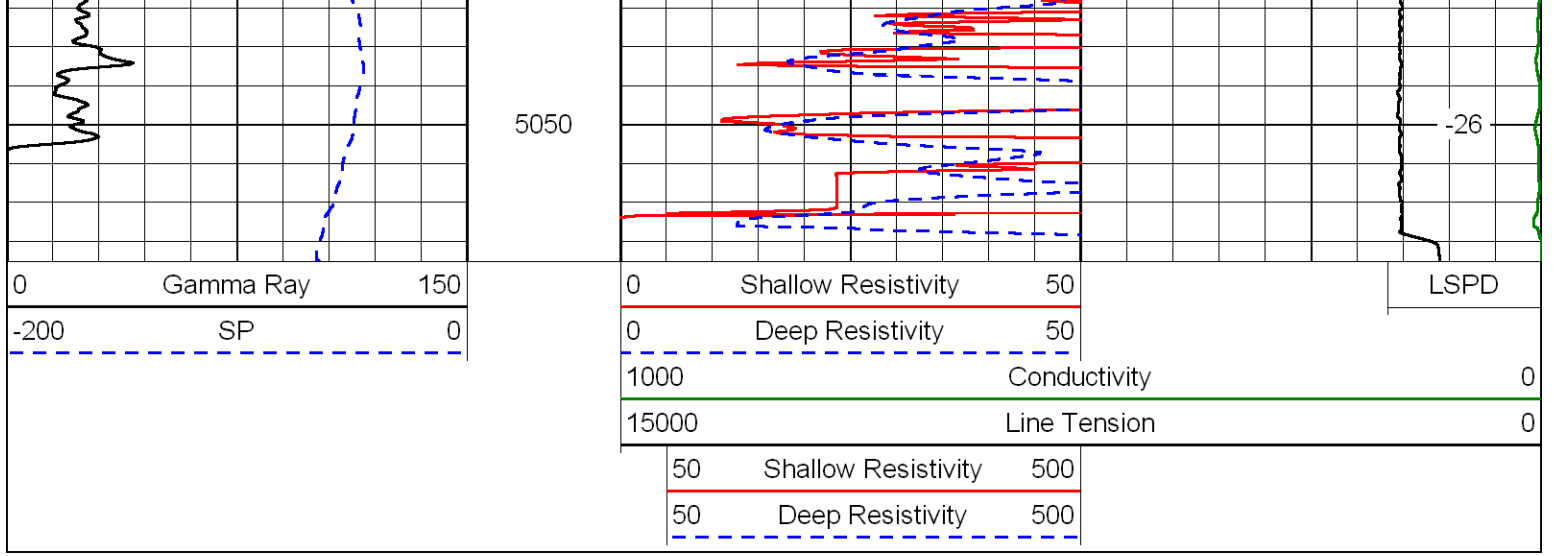
-27

-26

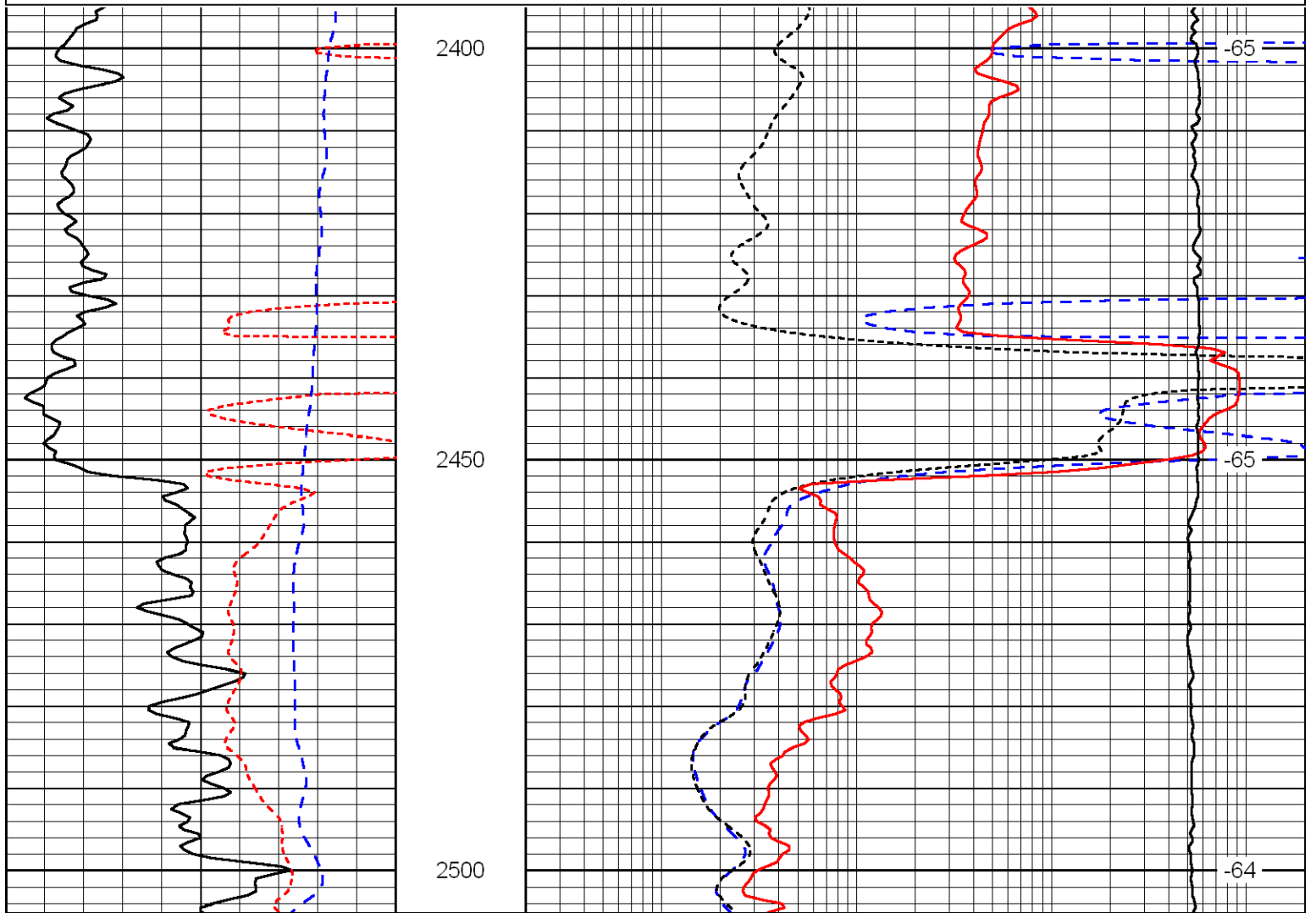
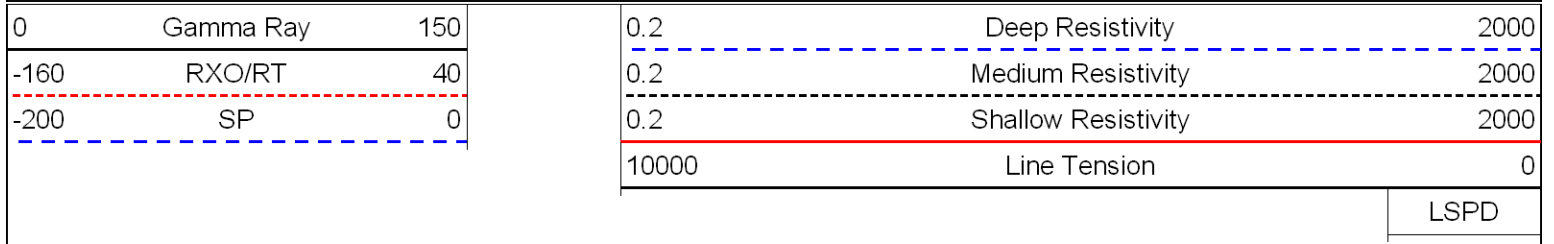
-27

-26





Database File: newgulf042512hd.db
 Dataset Pathname: dil/ngstack
 Presentation Format: dil
 Dataset Creation: Wed Apr 25 20:09:12 2012
 Charted by: Depth in Feet scaled 1:240



0	Gamma Ray	150
-160	RXO/RT	40
-200	SP	0

0.2	Deep Resistivity	2000
0.2	Medium Resistivity	2000
0.2	Shallow Resistivity	2000
10000	Line Tension	0

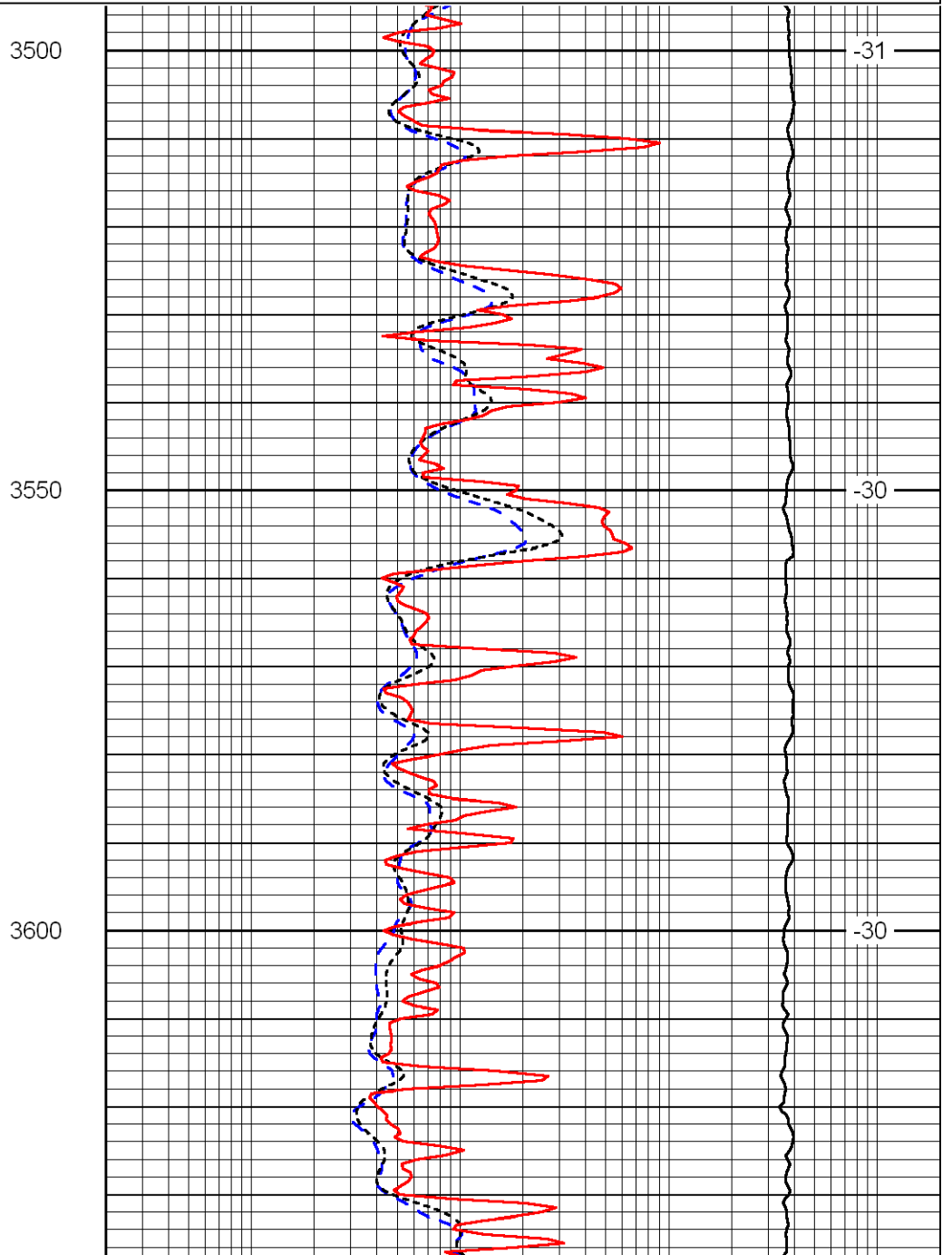
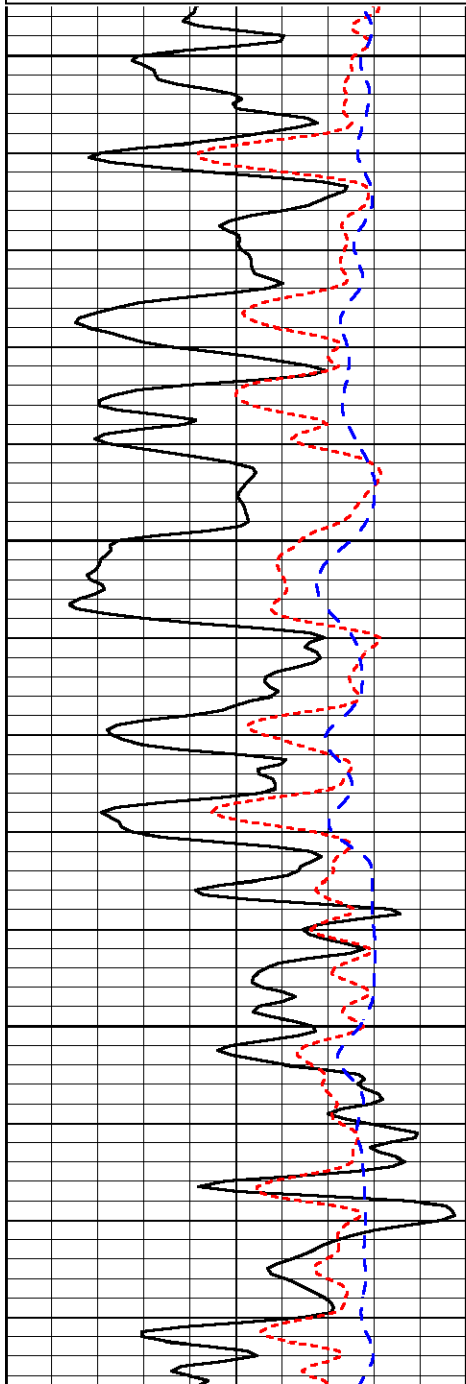
LSPD

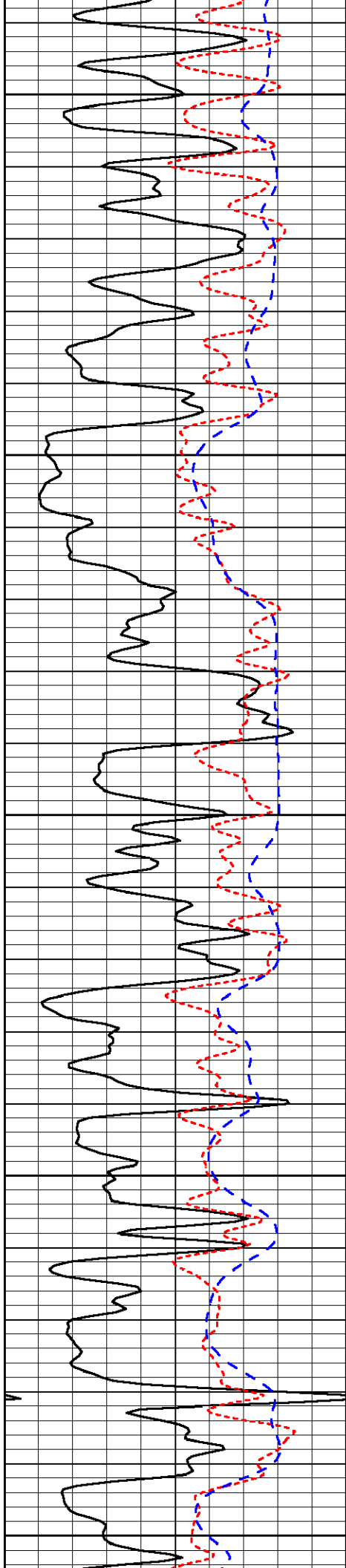
Database File: newgulf042512hd.db
 Dataset Pathname: dil/ngstack
 Presentation Format: dil
 Dataset Creation: Wed Apr 25 20:09:12 2012
 Charted by: Depth in Feet scaled 1:240

0	Gamma Ray	150
-160	RXO/RT	40
-200	SP	0

0.2	Deep Resistivity	2000
0.2	Medium Resistivity	2000
0.2	Shallow Resistivity	2000
10000	Line Tension	0

LSPD





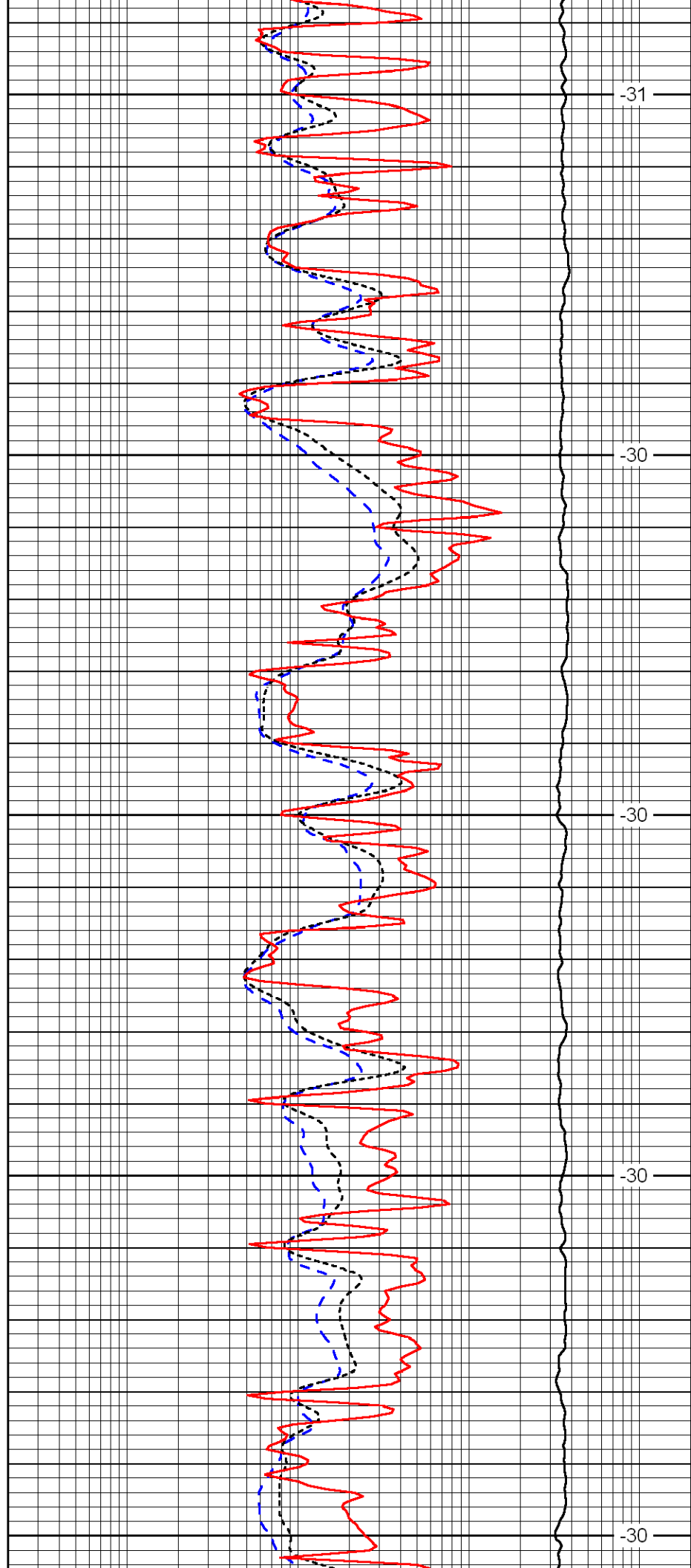
3650

3700

3750

3800

3850



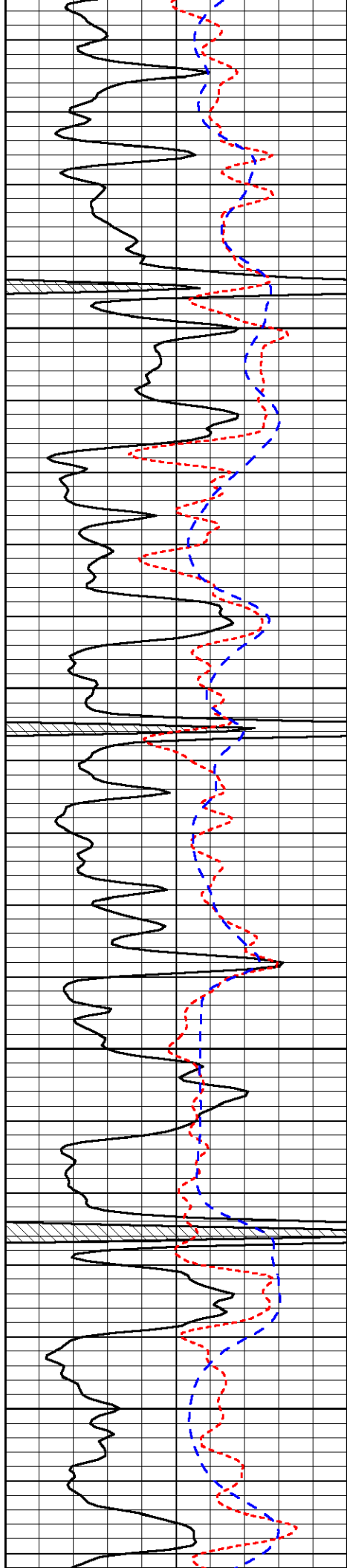
-31

-30

-30

-30

-30

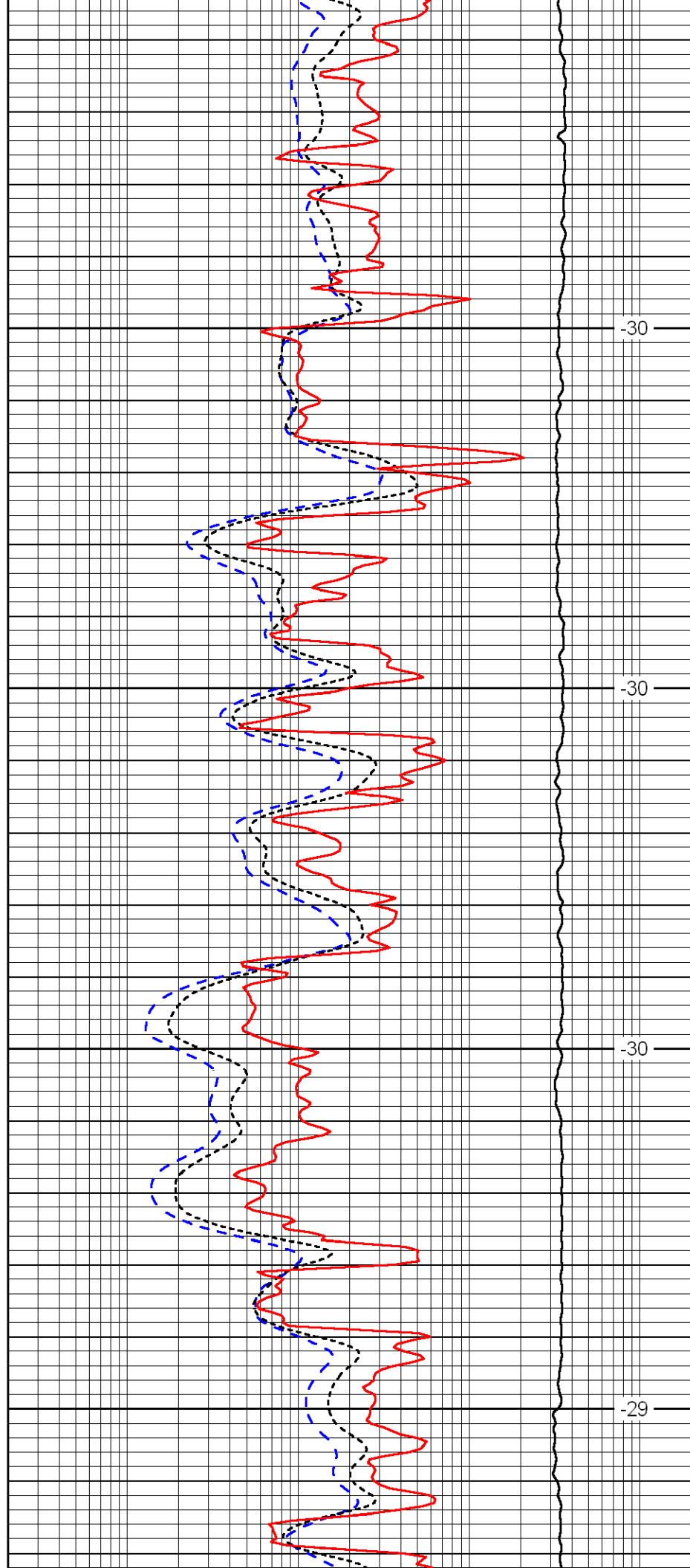


3900

3950

4000

4050

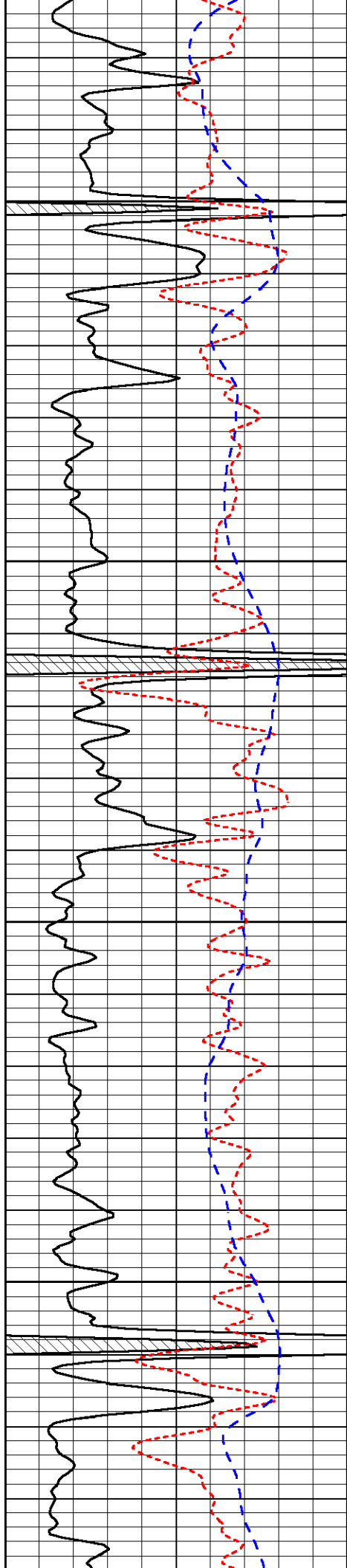


-30

-30

-30

-29

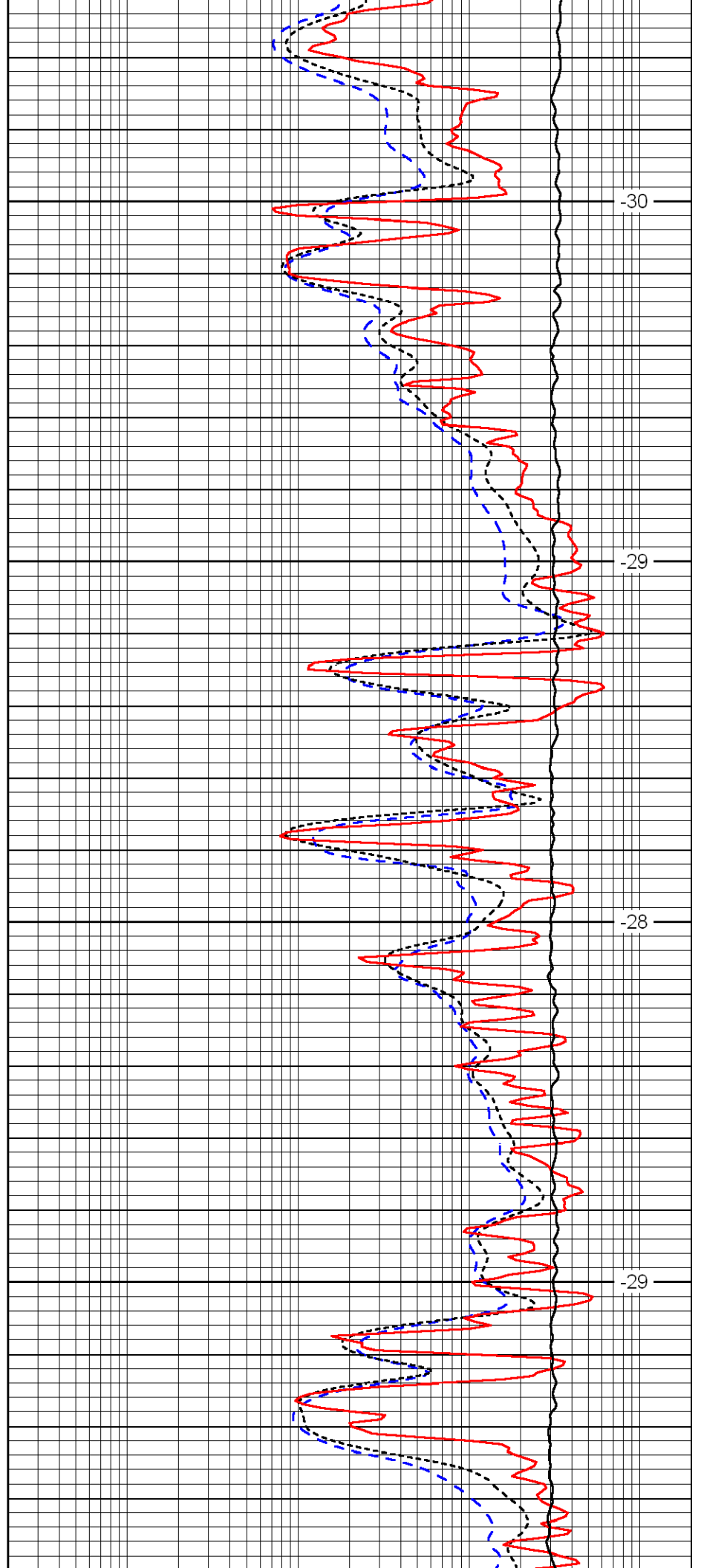


4100

4150

4200

4250

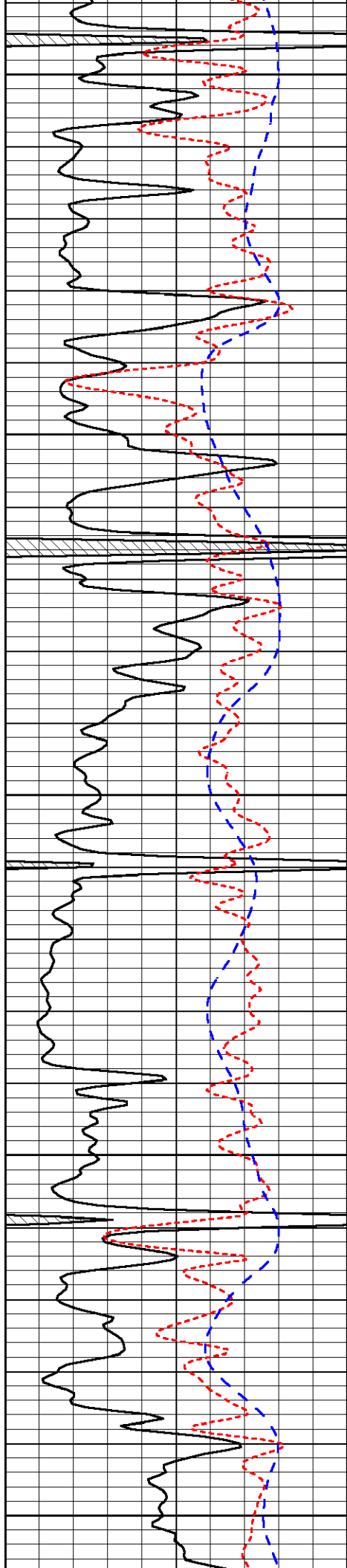


-30

-29

-28

-29



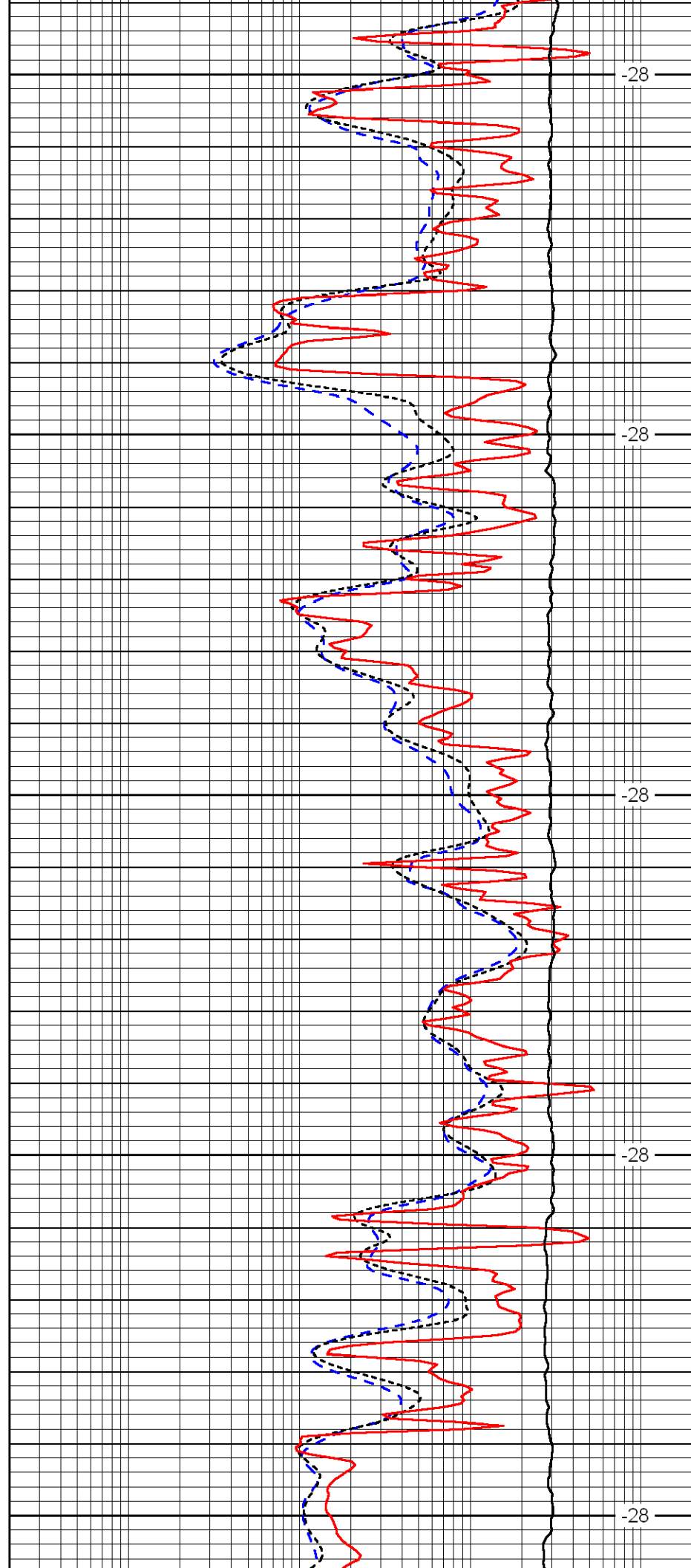
4300

4350

4400

4450

4500



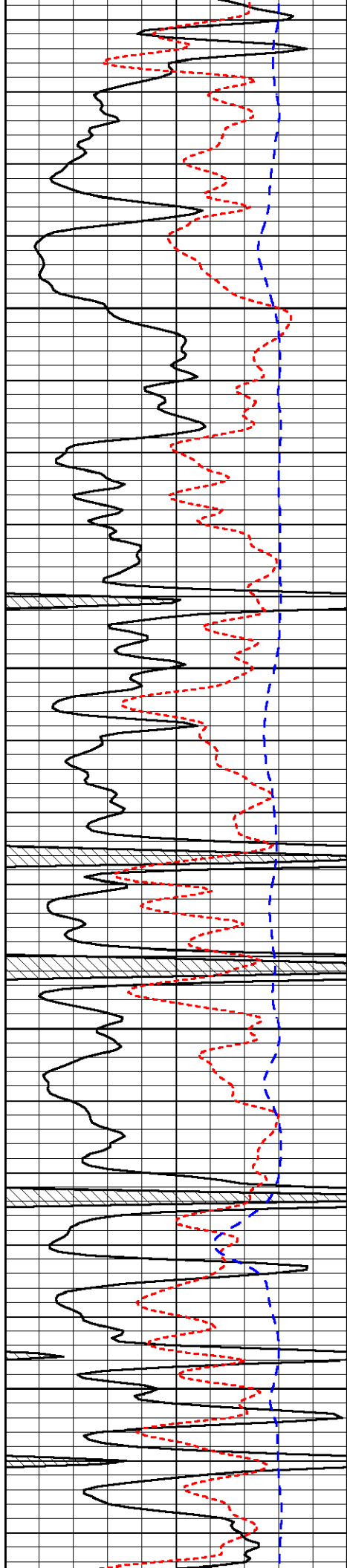
-28

-28

-28

-28

-28

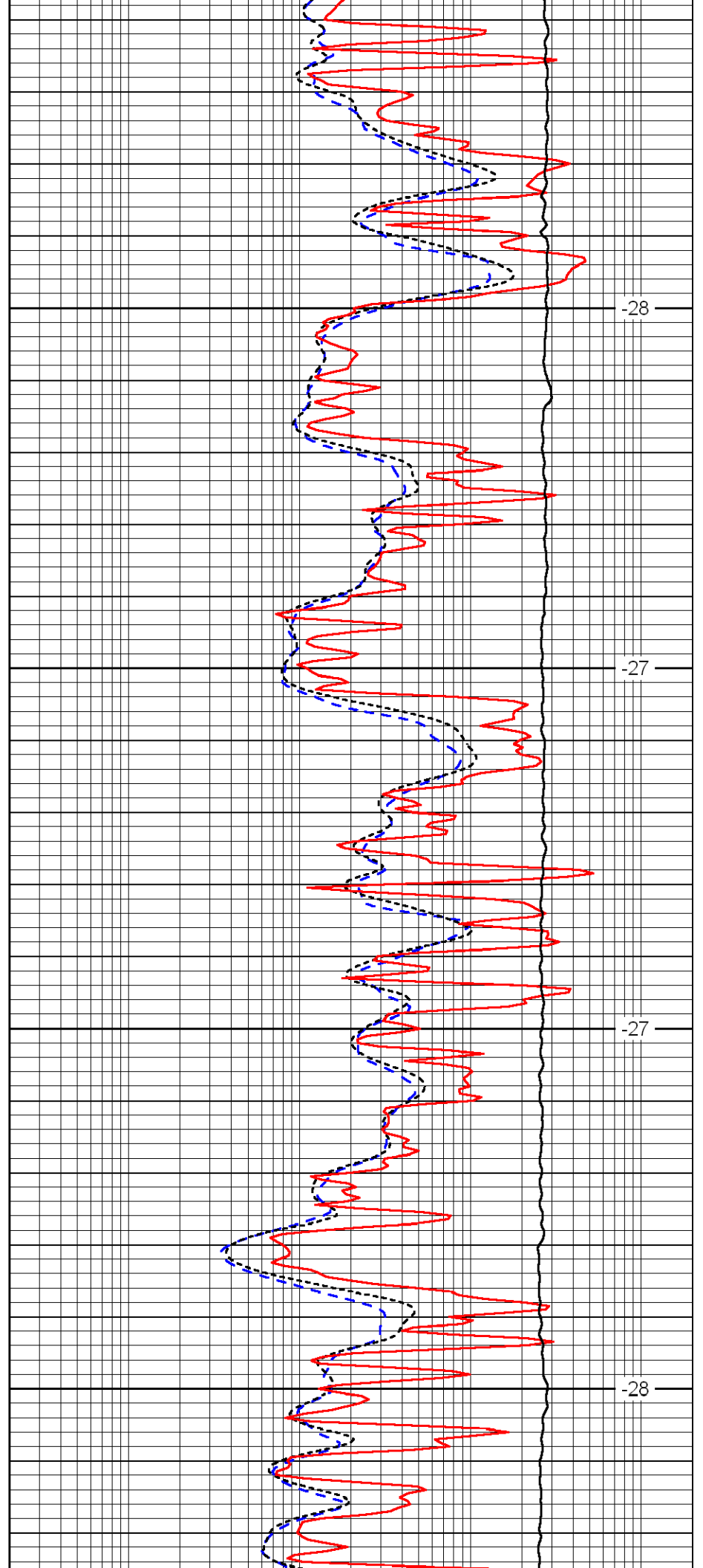


4550

4600

4650

4700

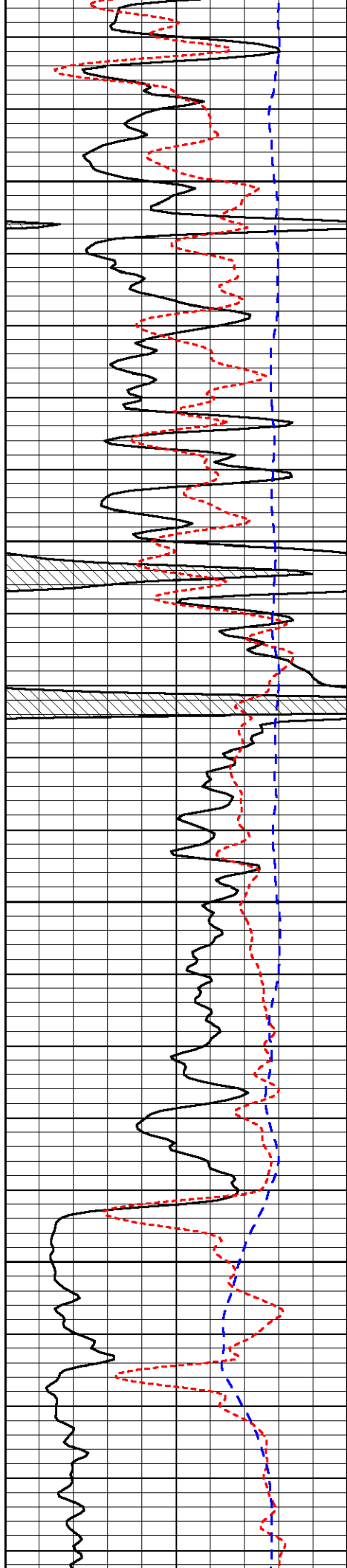


-28

-27

-27

-28

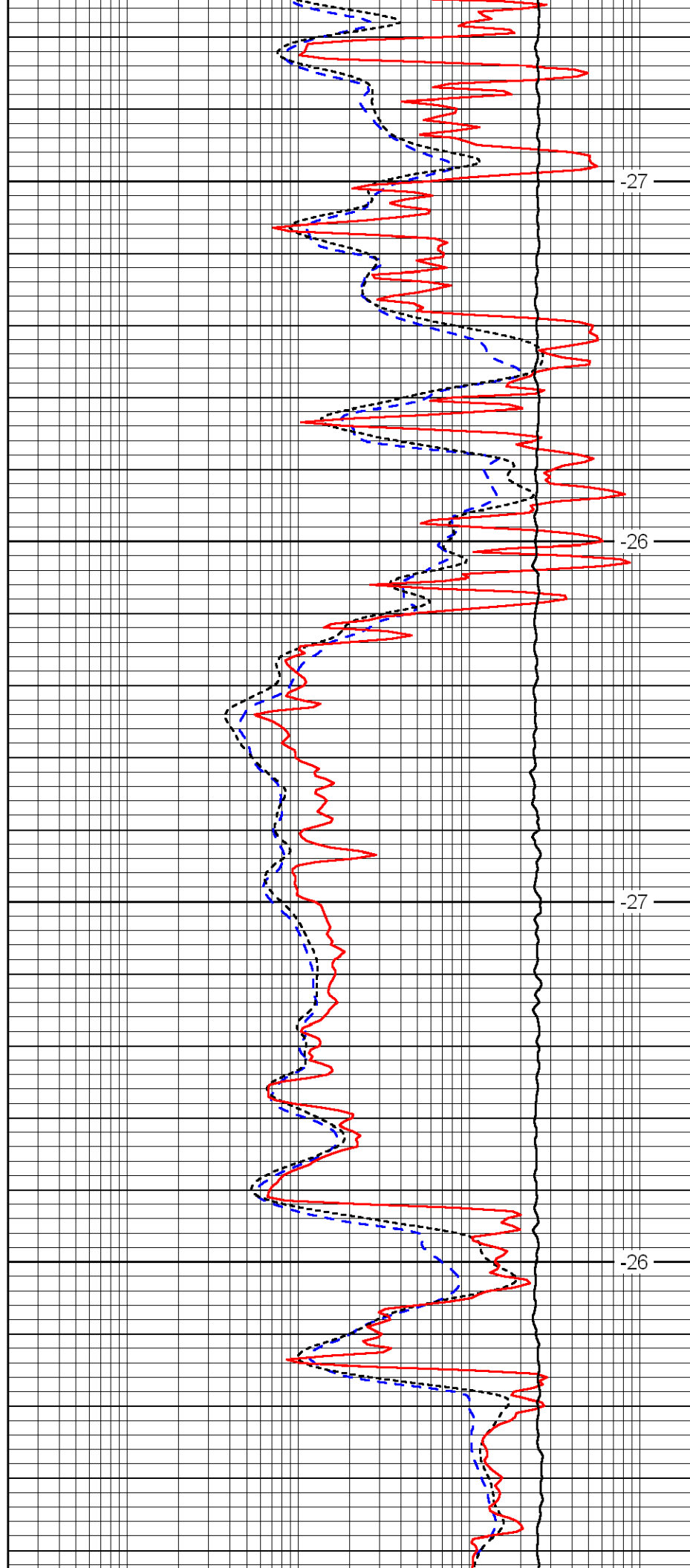


4750

4800

4850

4900

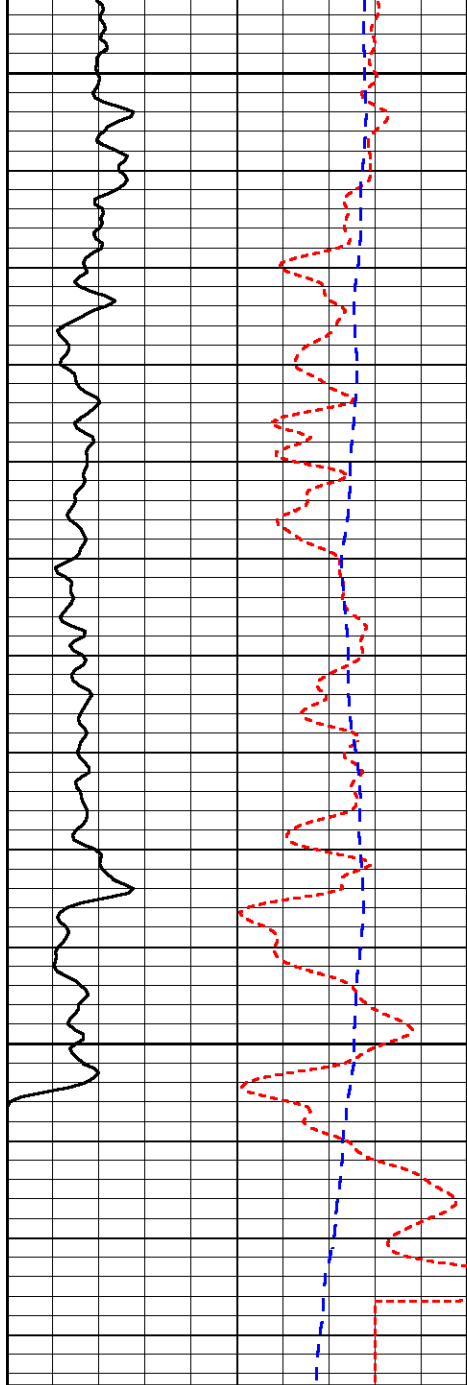


-27

-26

-27

-26

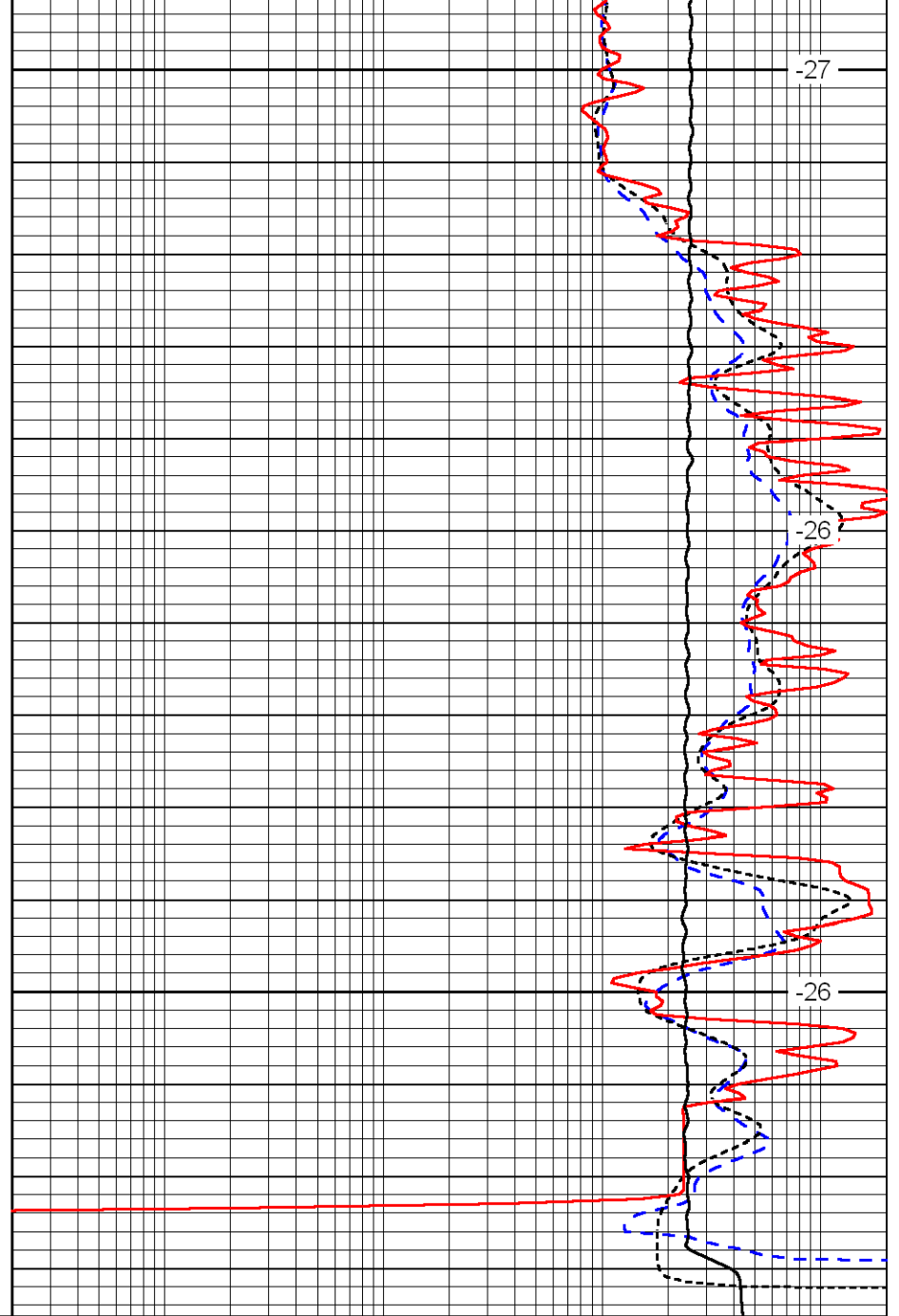


0	Gamma Ray	150
-160	RXO/RT	40
-200	SP	0

4950

5000

5050



0.2	Deep Resistivity	2000
0.2	Medium Resistivity	2000
0.2	Shallow Resistivity	2000
10000	Line Tension	0

-27

-26

-26

LSPD