



DIGITAL LOG (785) 625-3858

Dual Induction Log

API No.	15-195-22,781-00-00	
Company	Hess Oil Company	
Well	Ries No. 1-18	
Field	Wildcat	
County	Trego	State
		Kansas
Location	350' FSL & 2610' FEL	
Sec: 18	Twp: 14 S	Rge: 22 W
Permanent Datum	Ground Level	Elevation 2203
Log Measured From	Kelly Bushing	5 Ft. Above Perm. Datum
Drilling Measured From	Kelly Bushing	
		Other Services CNL/CDL
		Elevation K.B. 2208 D.F. 2203 G.L. 2203

Date	5/17/2012
Run Number	One
Depth Driller	4190
Depth Logger	4192
Bottom Logged Interval	4191
Top Log Interval	200
Casing Driller	8.625 @ 230
Casing Logger	231
Bit Size	7.875
Type Fluid in Hole	Chemical
Salinity, ppm CL	1.500
Density / Viscosity	9.2 57
pH / Fluid Loss	10.5 7.2
Source of Sample	Flowline
Rm @ Meas. Temp	1.75 @ 86
Rmf @ Meas. Temp	1.31 @ 86
Rmc @ Meas. Temp	2.36 @ 86
Source of Rmf / Rmc	Charts
Rm @ BHT	1.28 @ 118
Operating Rig Time	2 1/2 Hours
Max Rec. Temp. F	118
Equipment Number	17
Location	Hays
Recorded By	D. Martin
Witnessed By	Jamie Hess

<<< Fold Here >>>

All interpretations are opinions based on inferences from electrical or other measurements and we cannot and do not guarantee the accuracy or correctness of any interpretation, and we shall not, except in the case of gross or willful negligence on our part, be liable or responsible for any loss, costs, damages, or expenses incurred or sustained by anyone resulting from any interpretation made by any of our officers, agents or employees. These interpretations are also subject to our general terms and conditions set out in our current Price Schedule.

Comments

Thank you for using Log-Tech, Inc.
(785) 625-3858

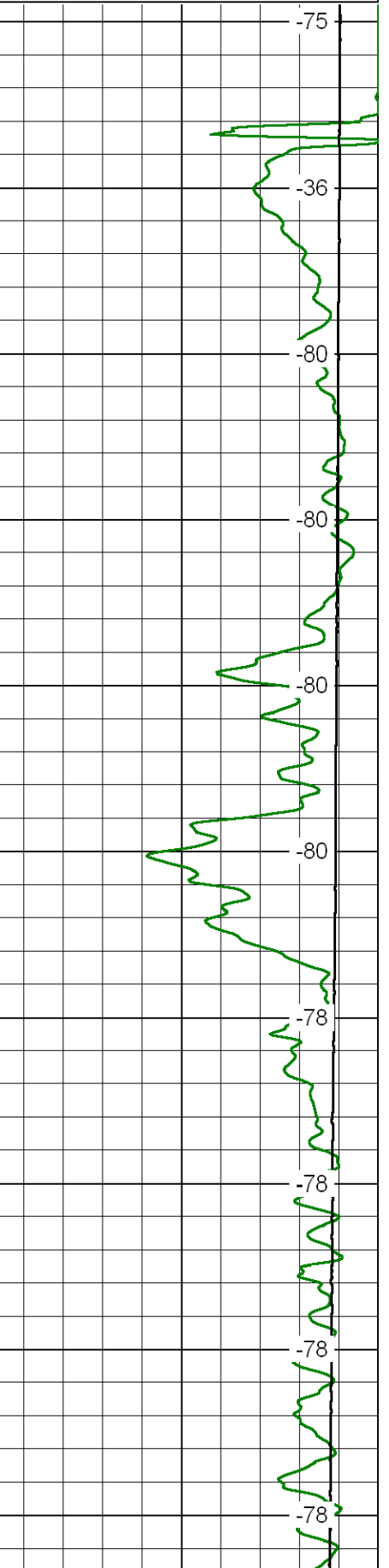
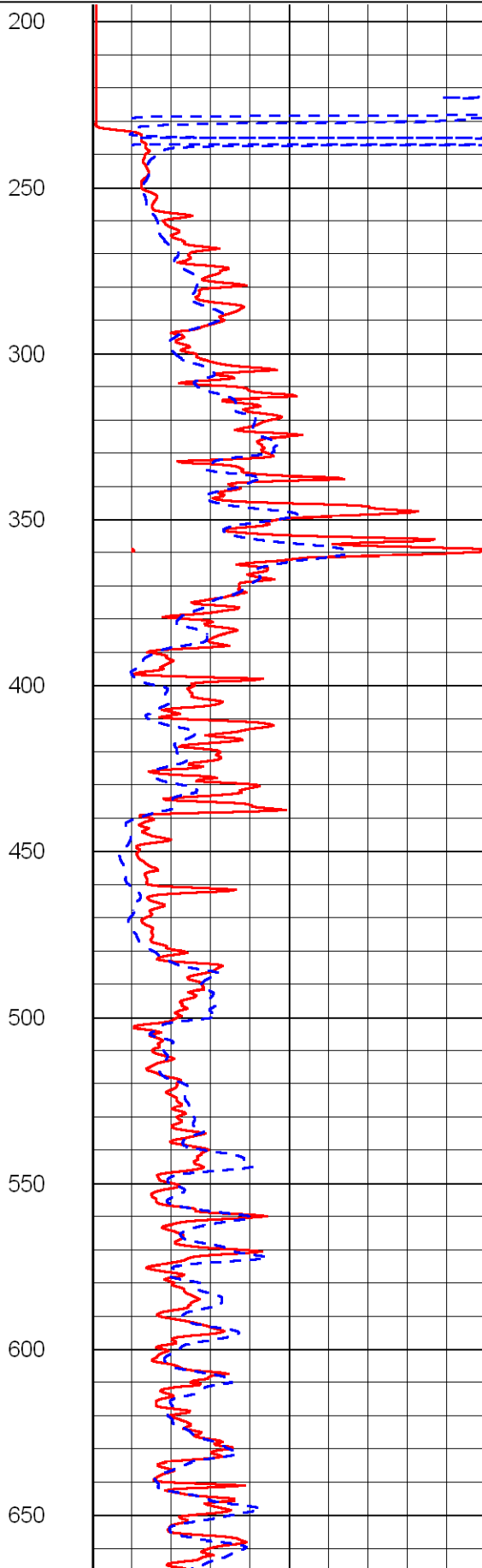
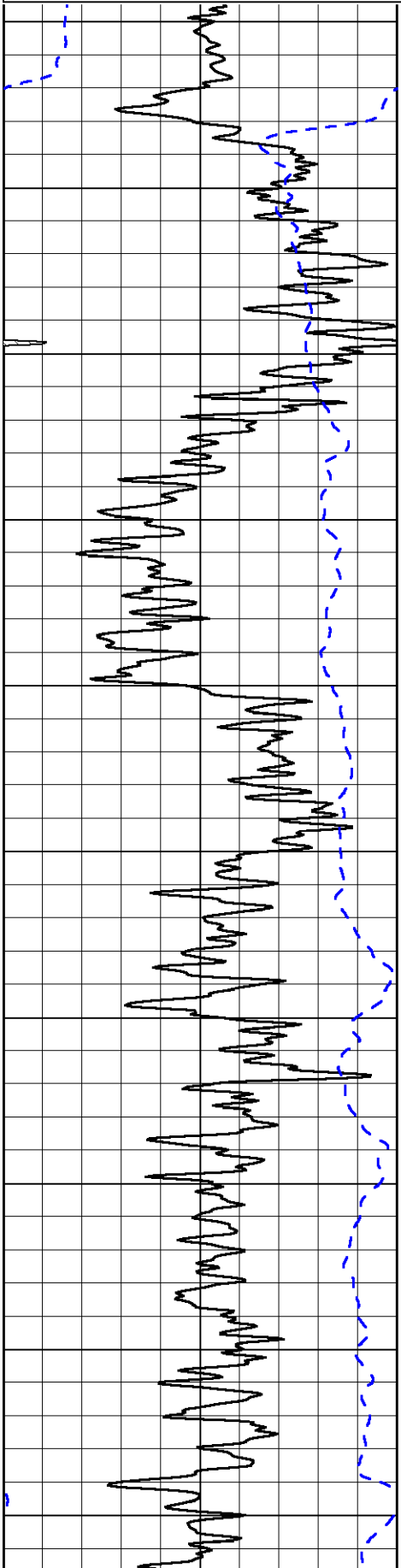
Ogallah Exit on I-70,
S to Curve(keep straight), 2 S to U Rd.
3 W, 1 S, W Into

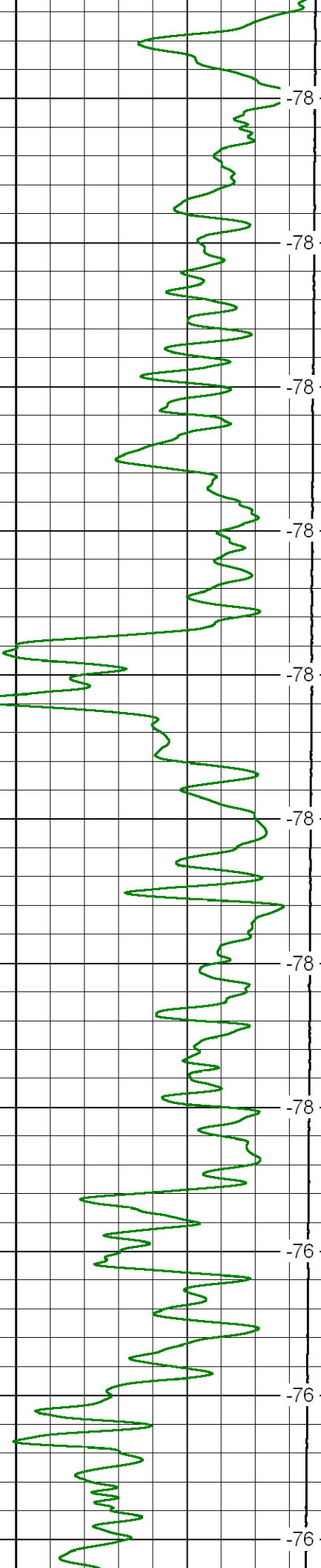
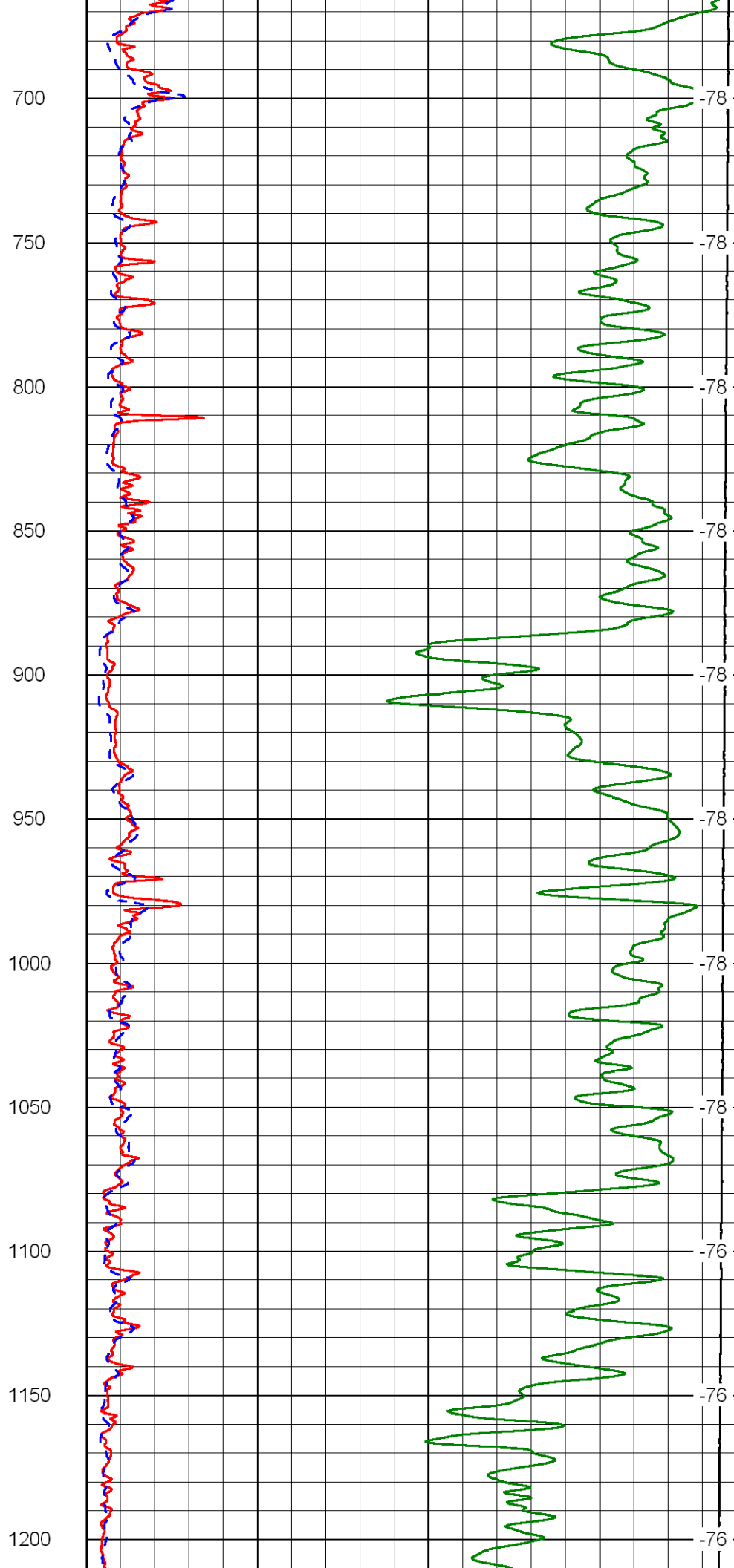
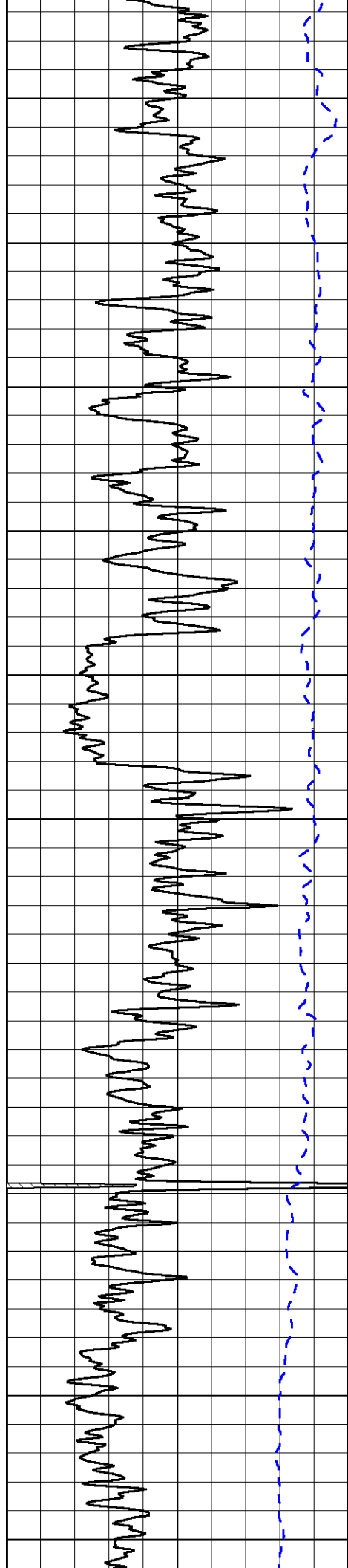
Database File: heshd.db
 Dataset Pathname: DIL/hessstk
 Presentation Format: dil2in
 Dataset Creation: Thu May 17 12:49:45 2012
 Charted by: Depth in Feet scaled 1:600

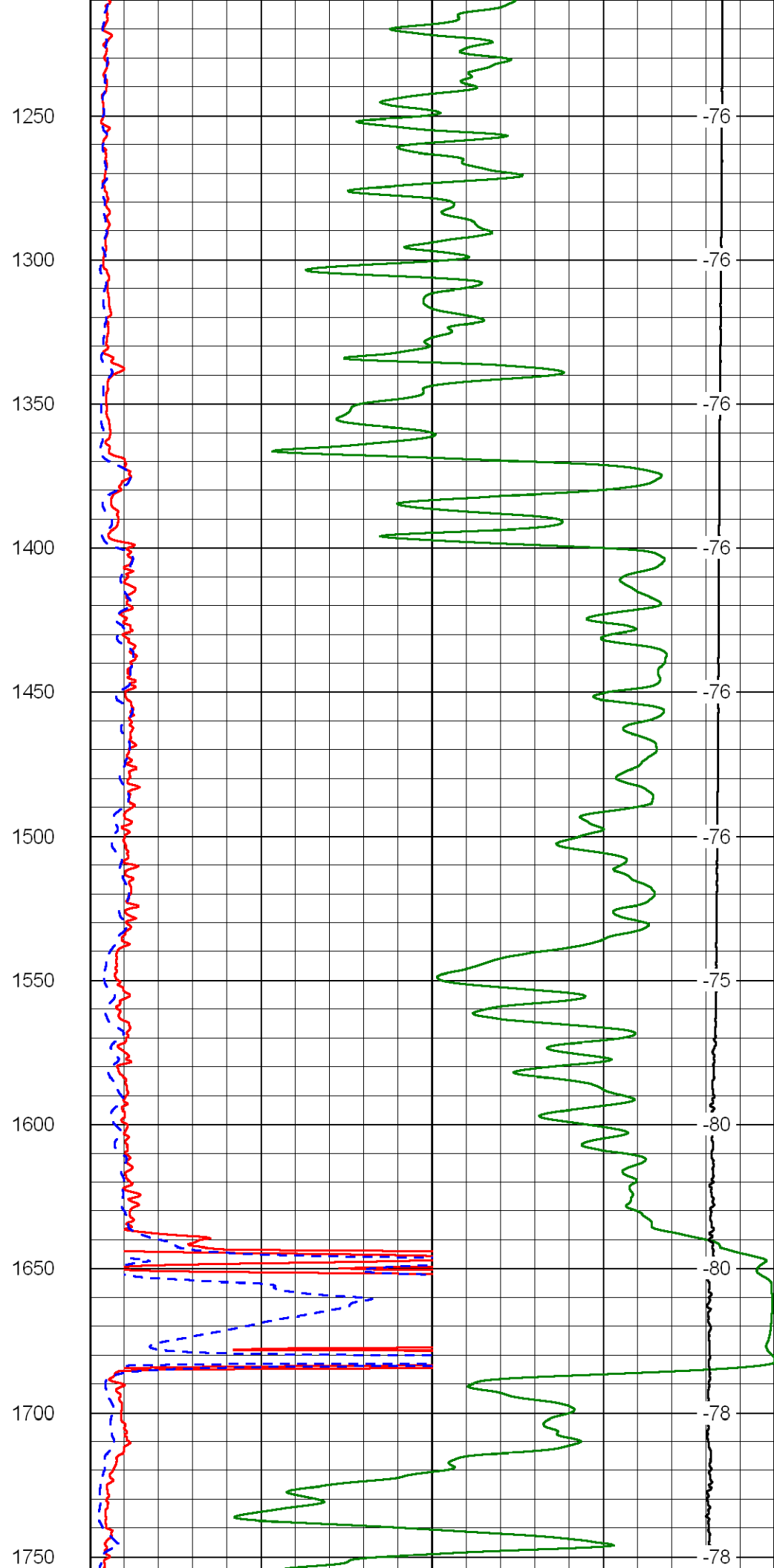
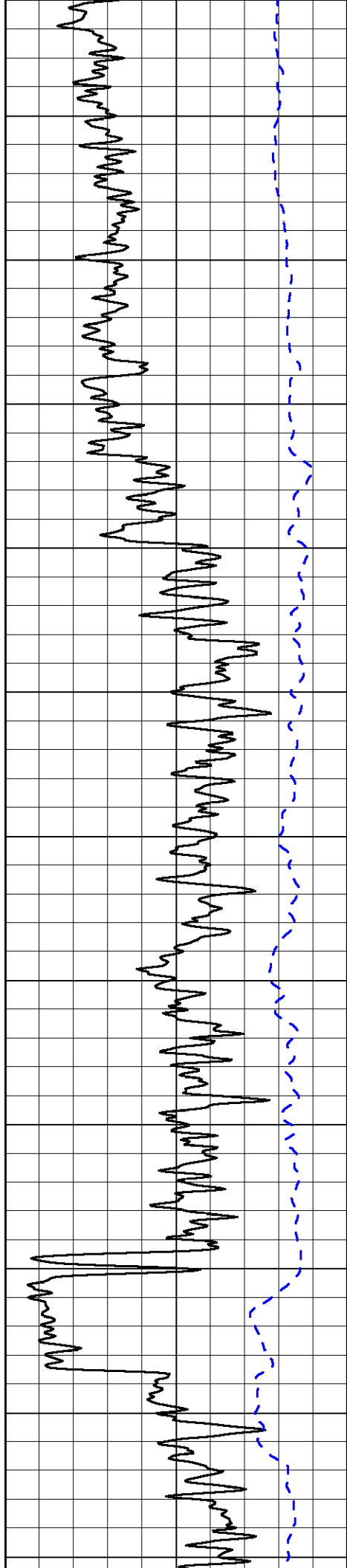
0	Gamma Ray	150
-200	SP	0

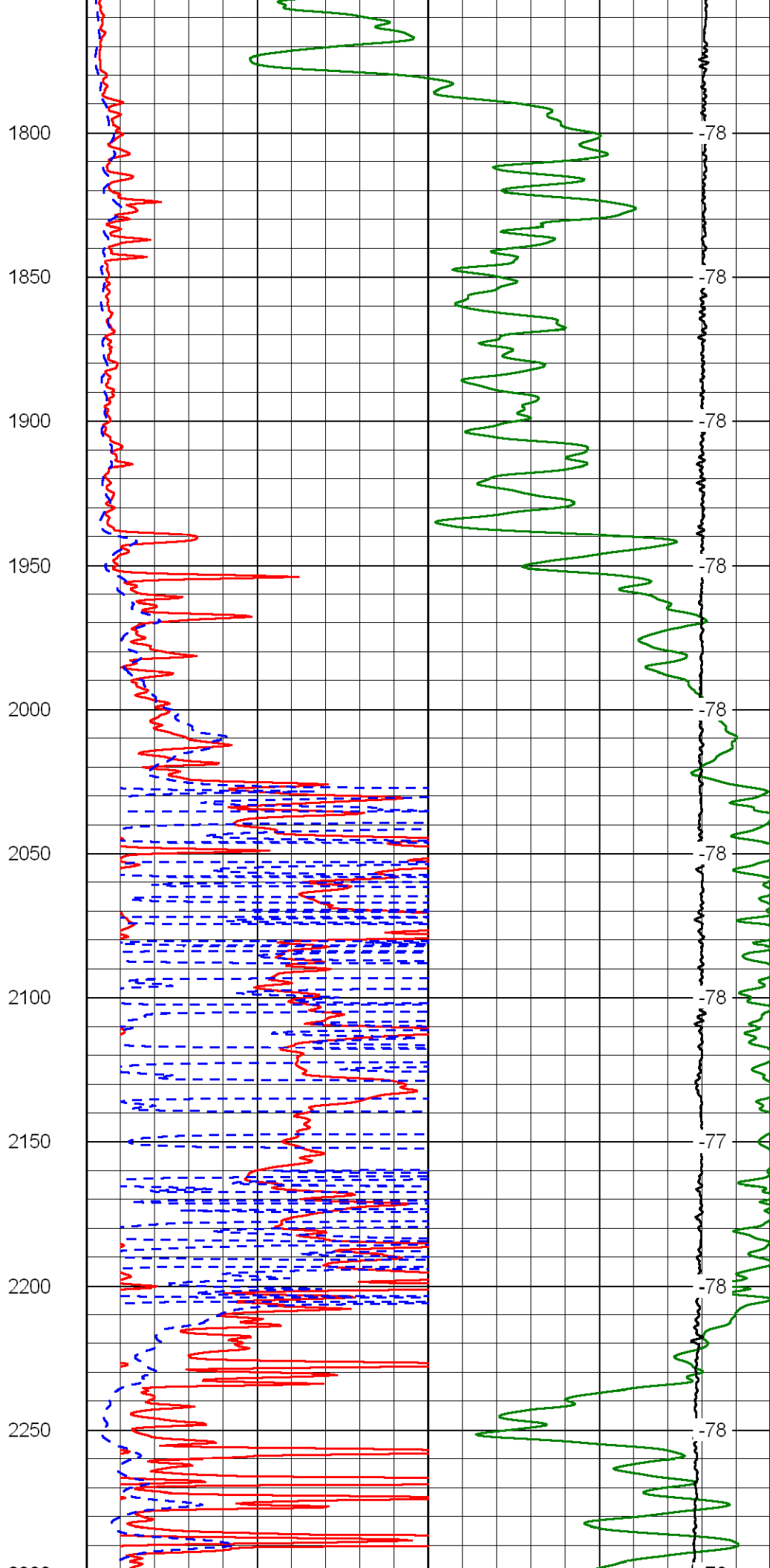
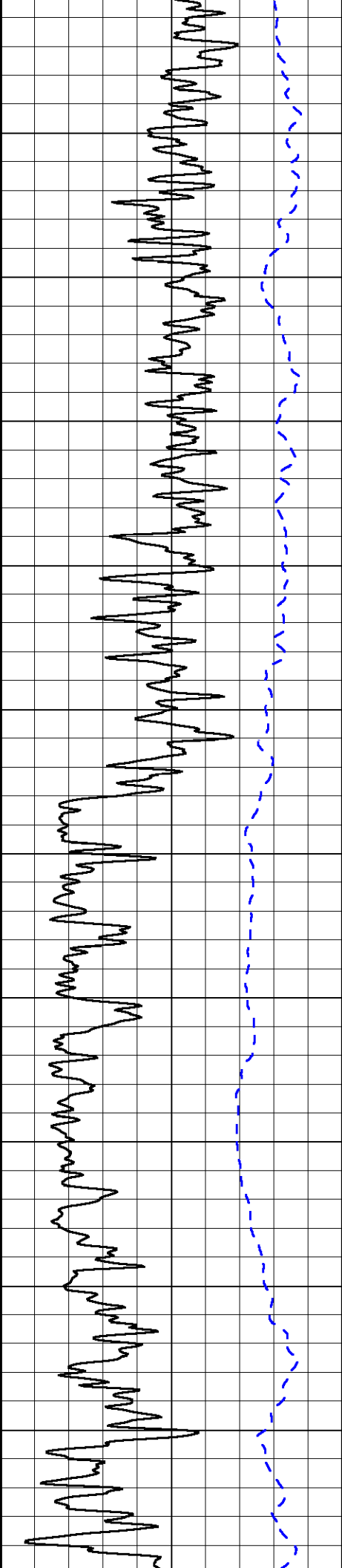
0	Shallow Resistivity	50
0	Deep Resistivity	50
1000	Conductivity	0
15000	Line Tension	0

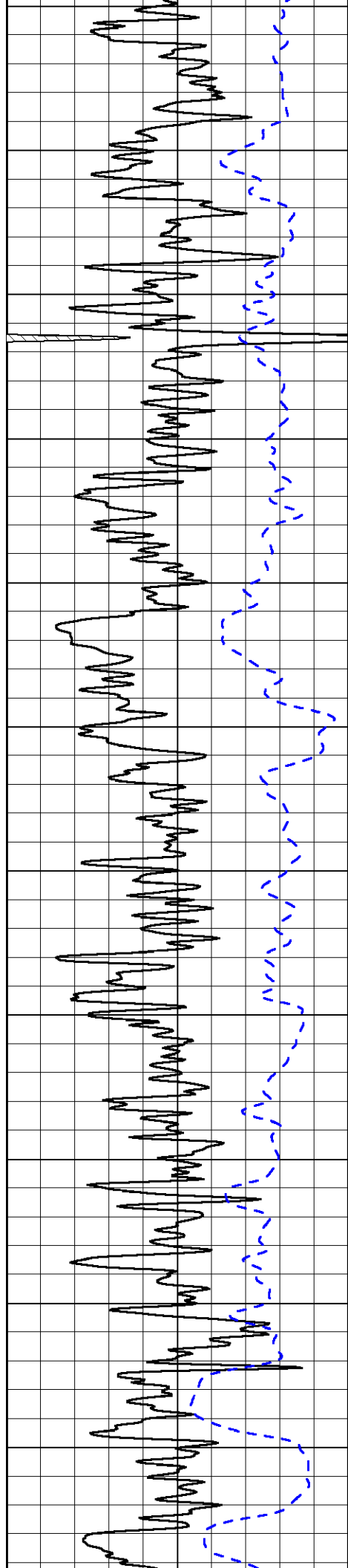
50	Shallow Resistivity	500
50	Deep Resistivity	500



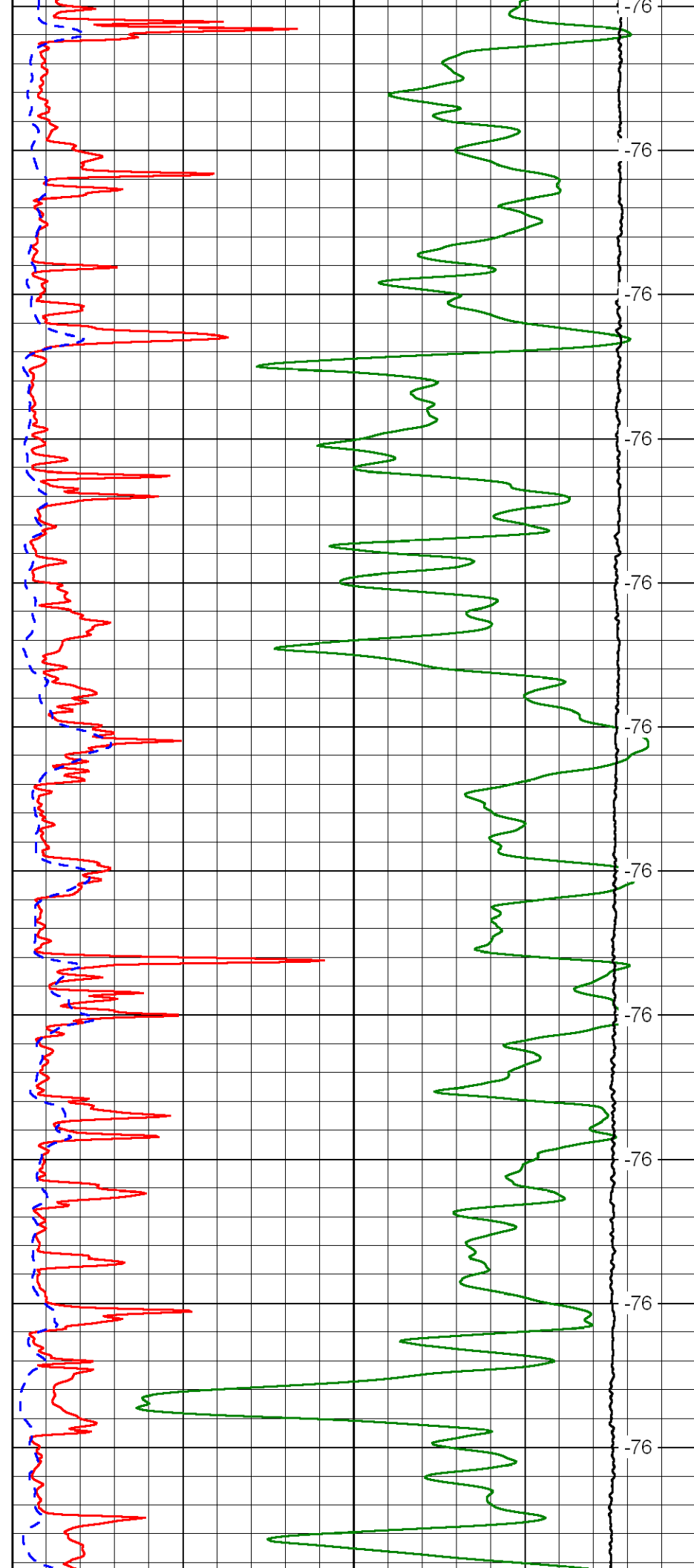




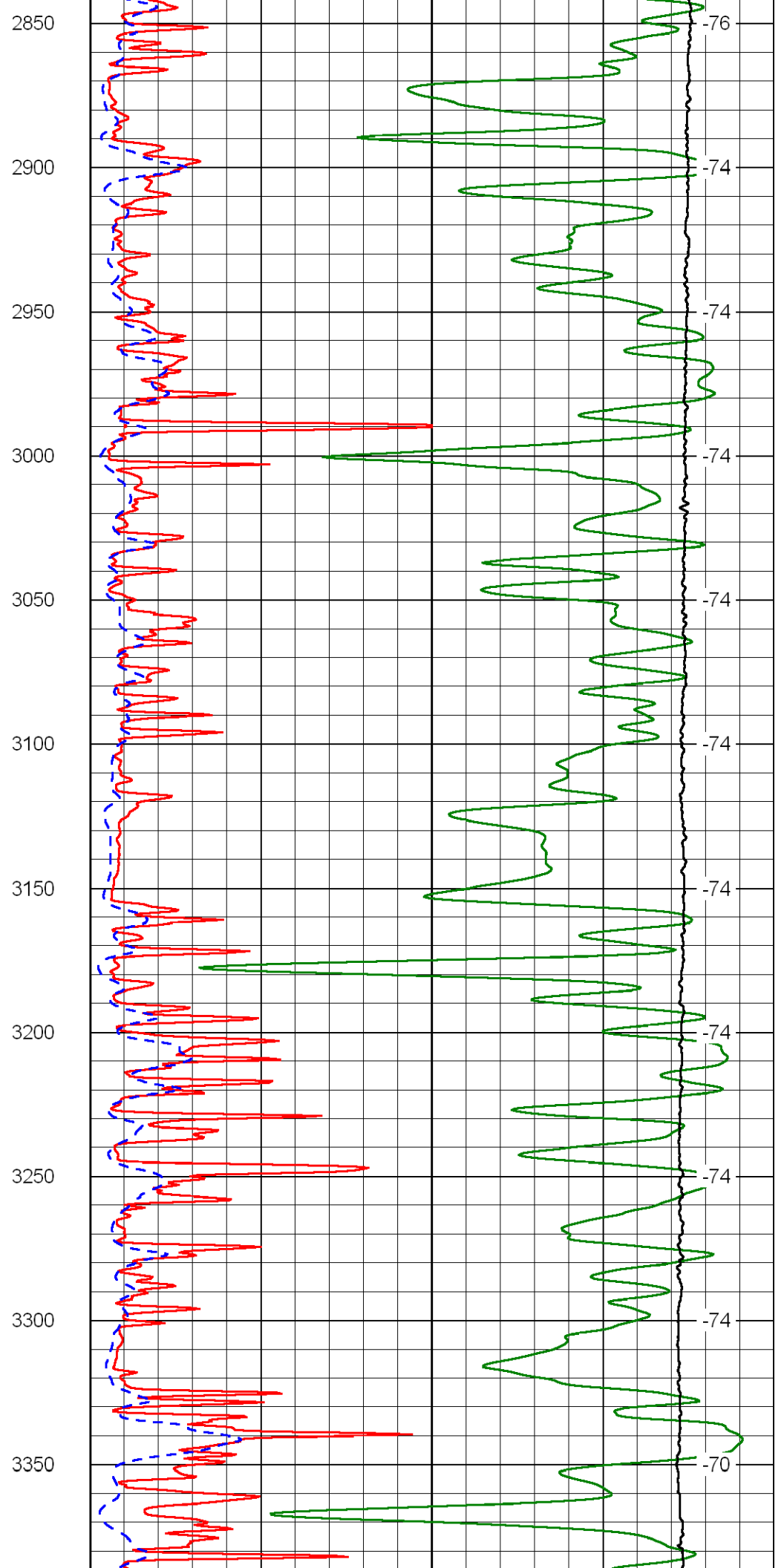
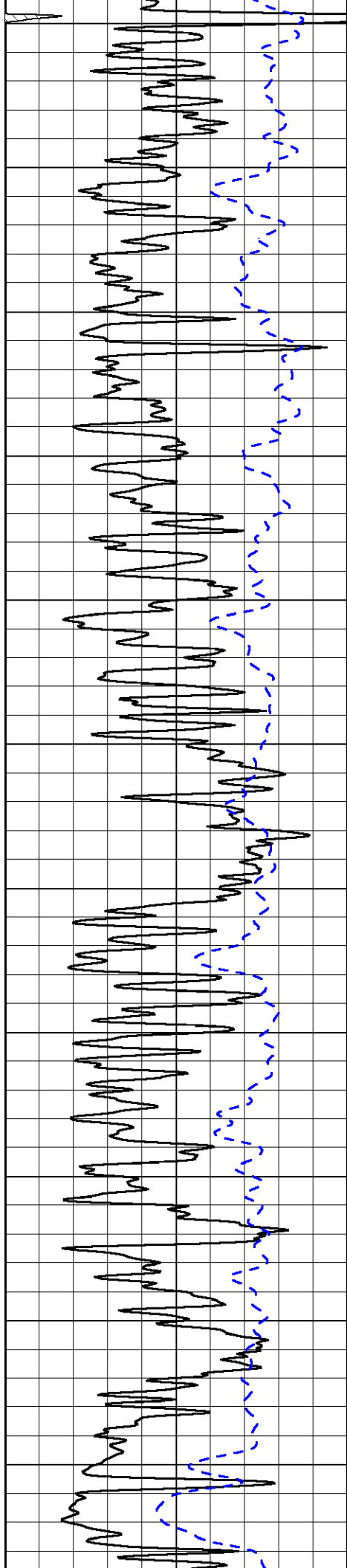


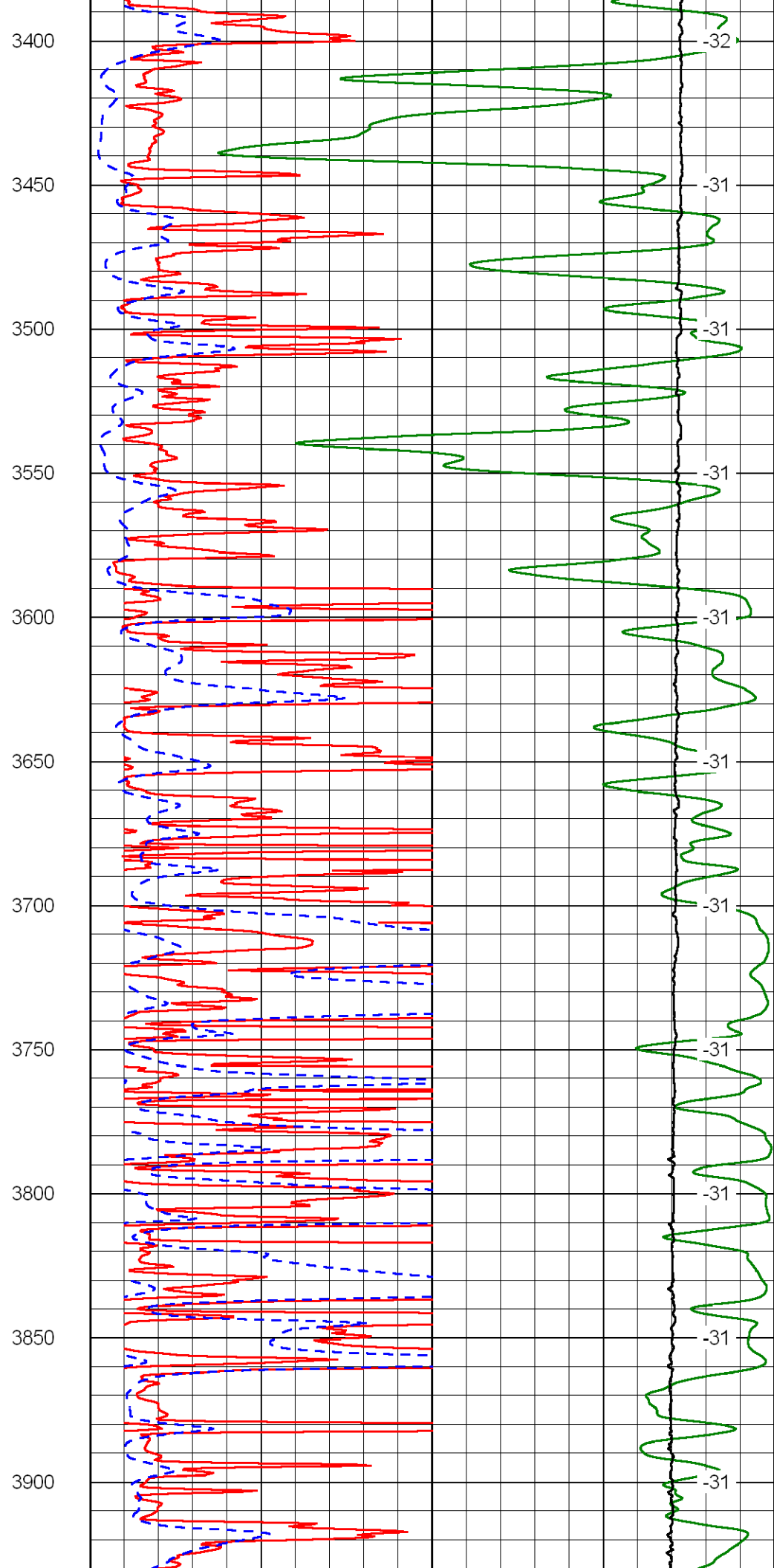
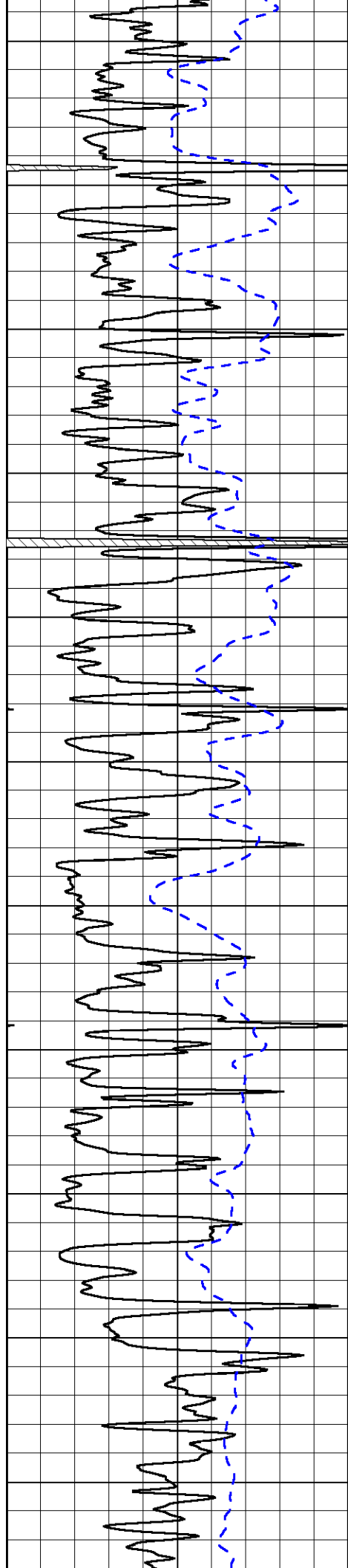


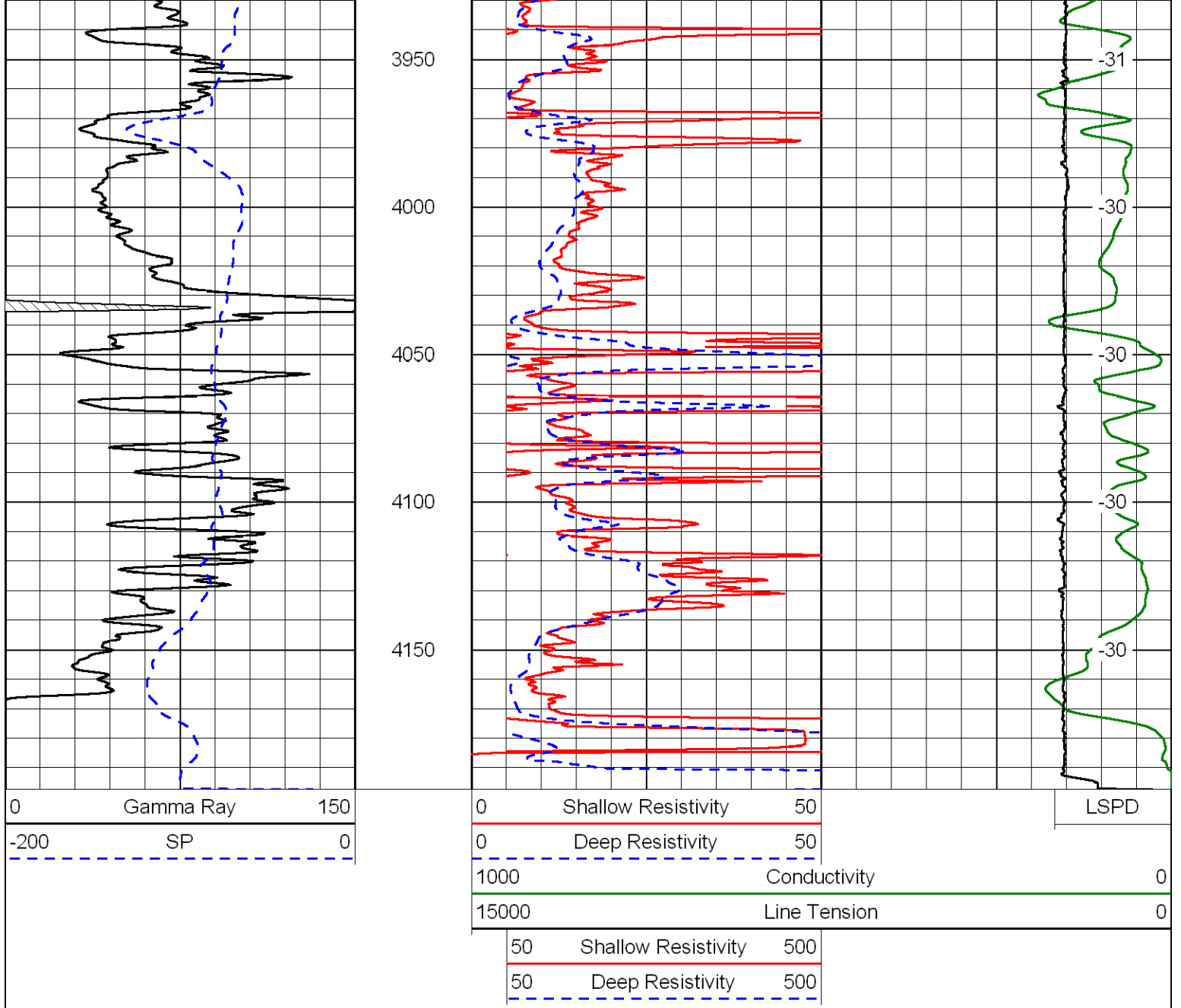
2300
2350
2400
2450
2500
2550
2600
2650
2700
2750
2800



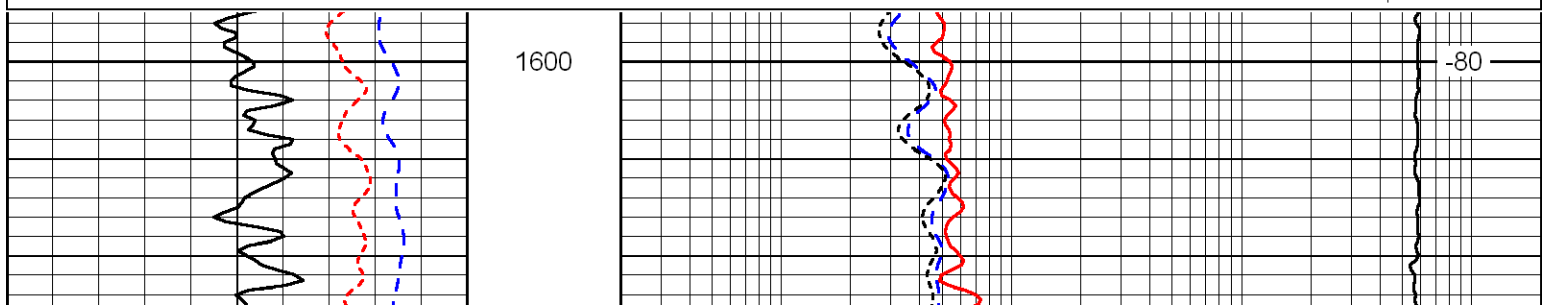
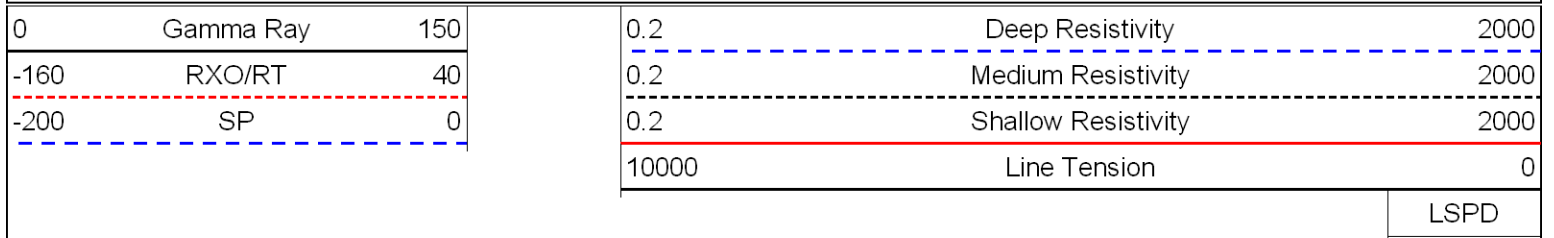
-76
-76
-76
-76
-76
-76
-76
-76
-76
-76
-76

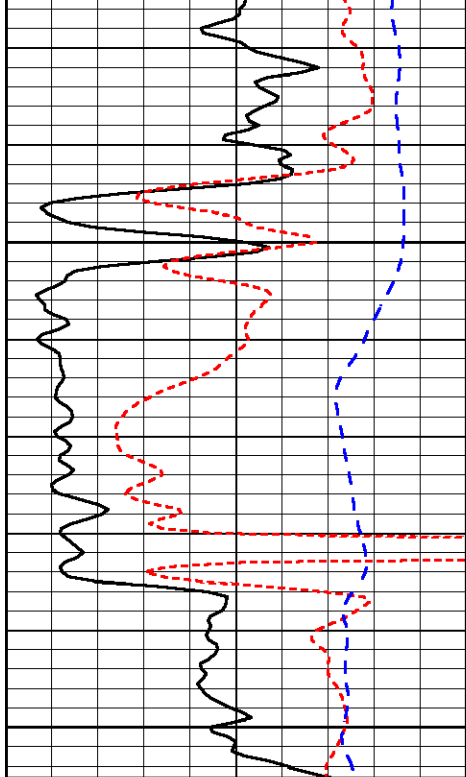






Database File: heshd.db
 Dataset Pathname: DIL/hessstk
 Presentation Format: dil
 Dataset Creation: Thu May 17 12:49:45 2012
 Charted by: Depth in Feet scaled 1:240

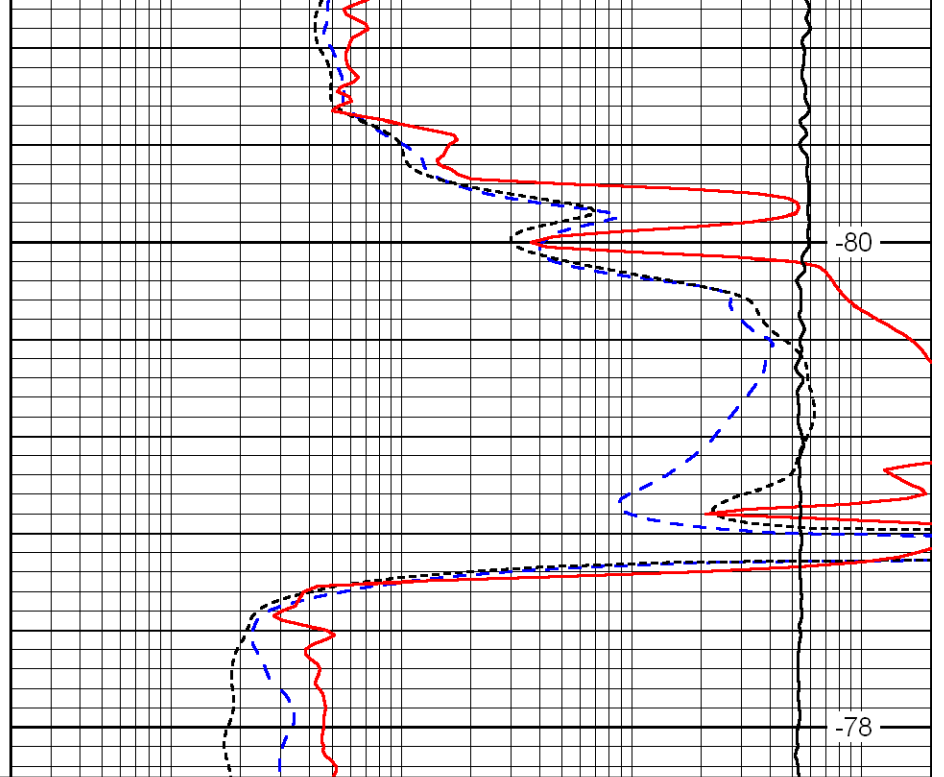




1650

1700

0	Gamma Ray	150
-160	RXO/RT	40
-200	SP	0



-80

-78

0.2	Deep Resistivity	2000
0.2	Medium Resistivity	2000
0.2	Shallow Resistivity	2000
10000	Line Tension	0

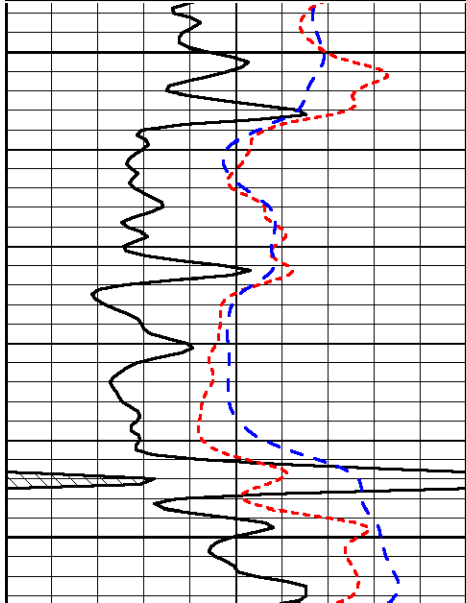
LSPD

Database File: heshd.db
 Dataset Pathname: DIL/hessstk
 Presentation Format: dil
 Dataset Creation: Thu May 17 12:49:45 2012
 Charted by: Depth in Feet scaled 1:240

0	Gamma Ray	150
-160	RXO/RT	40
-200	SP	0

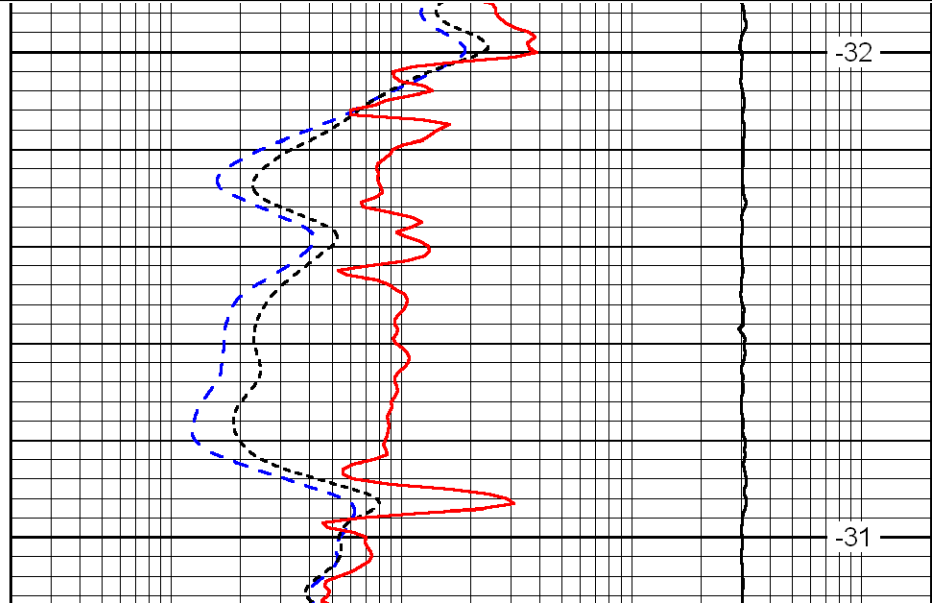
0.2	Deep Resistivity	2000
0.2	Medium Resistivity	2000
0.2	Shallow Resistivity	2000
10000	Line Tension	0

LSPD



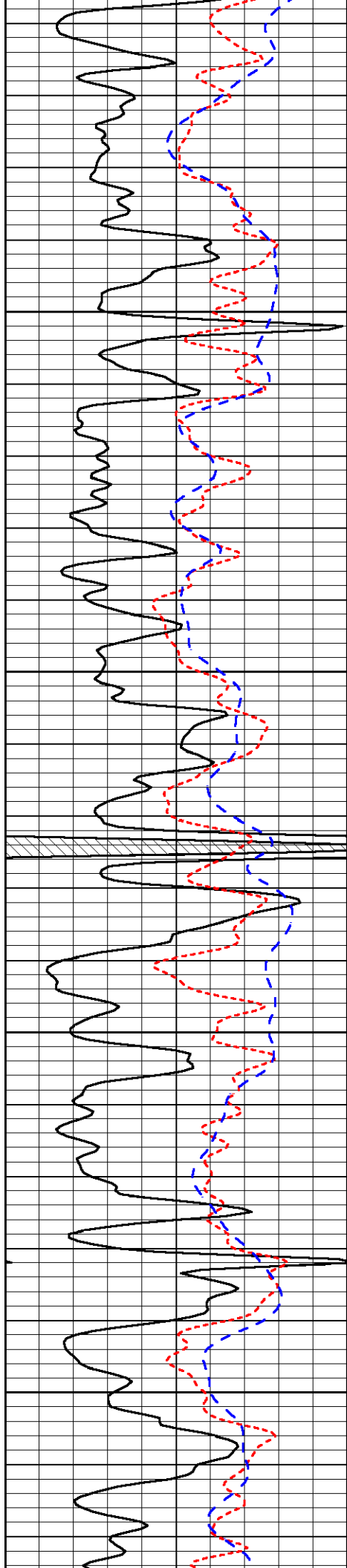
3400

3450



-32

-31

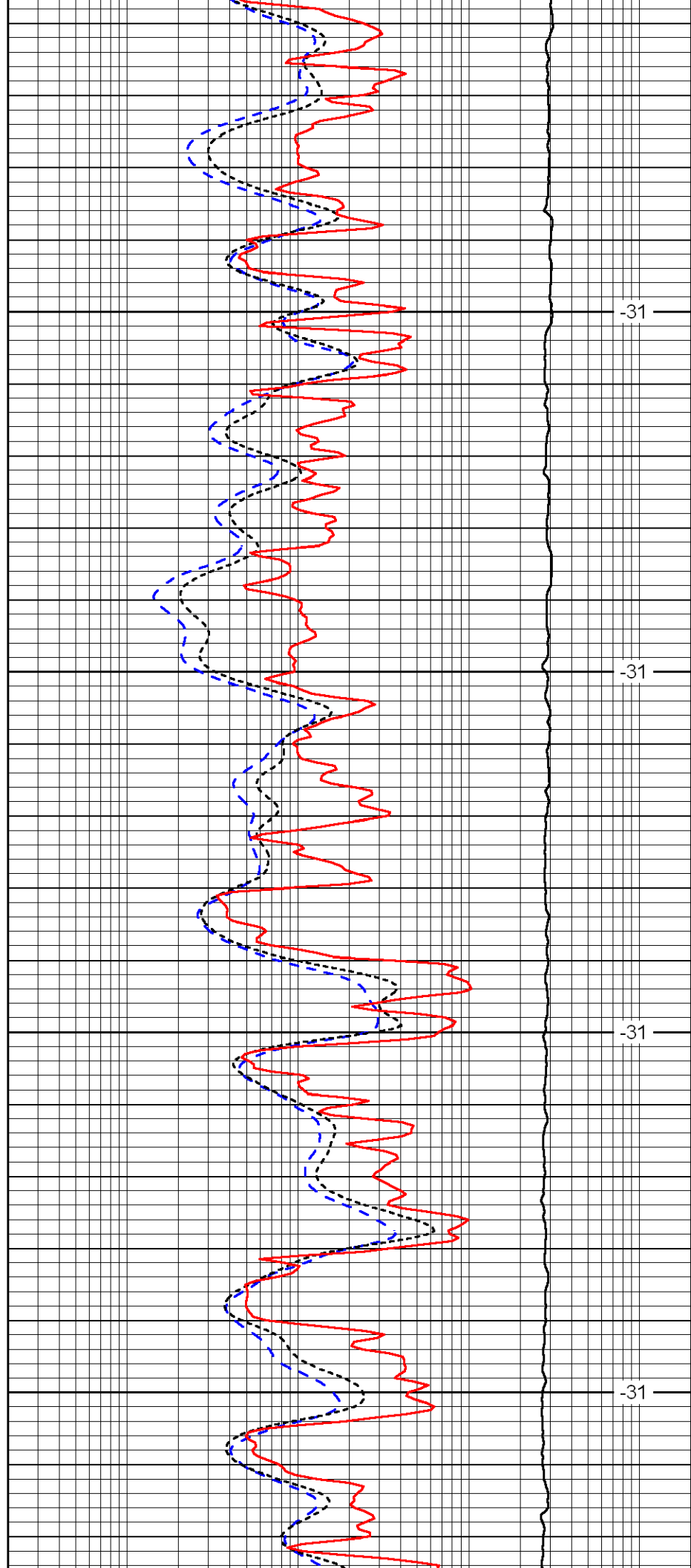


3500

3550

3600

3650

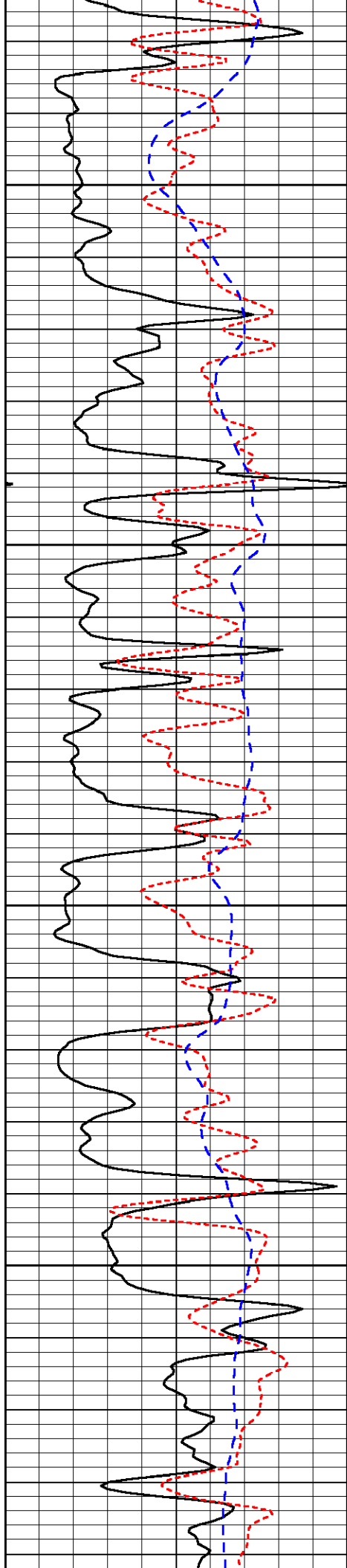


-31

-31

-31

-31

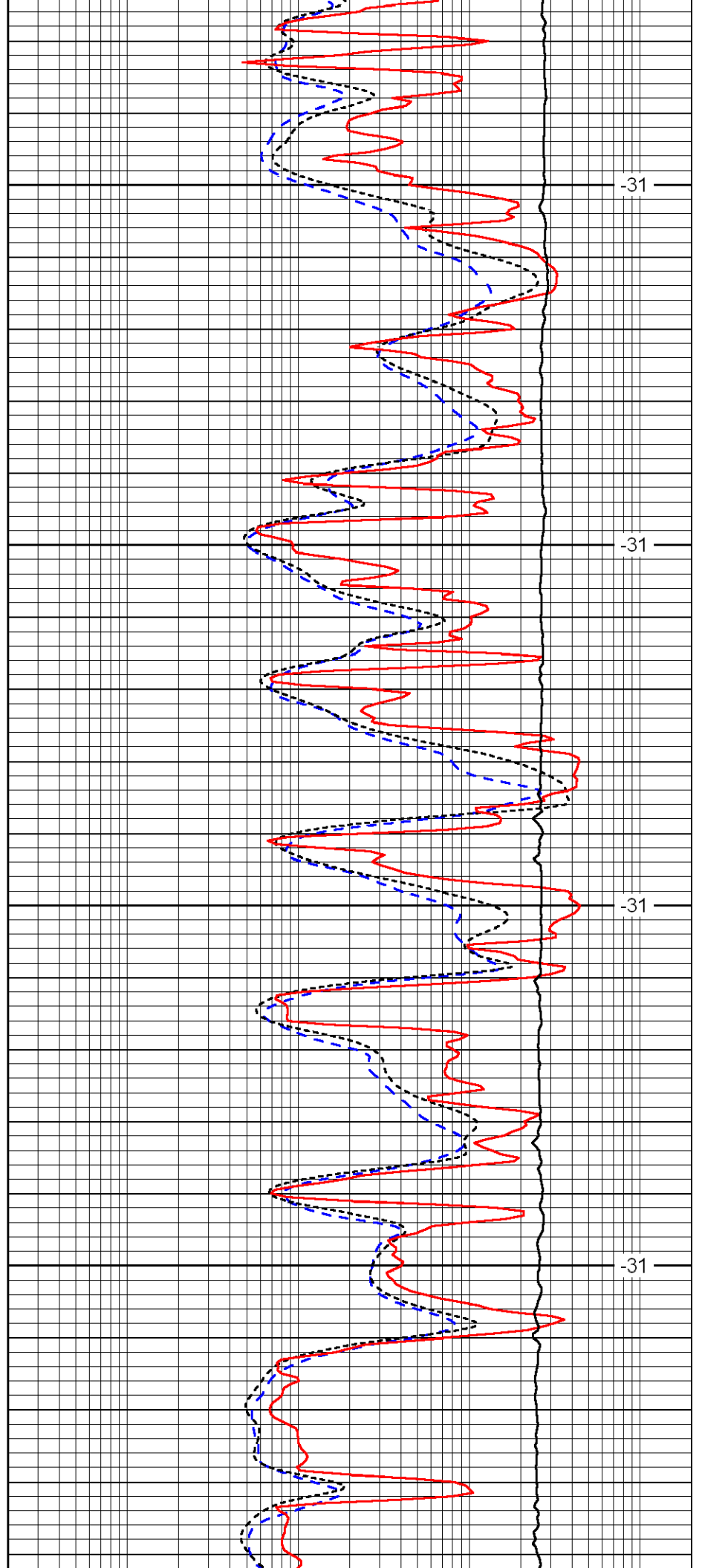


3700

3750

3800

3850

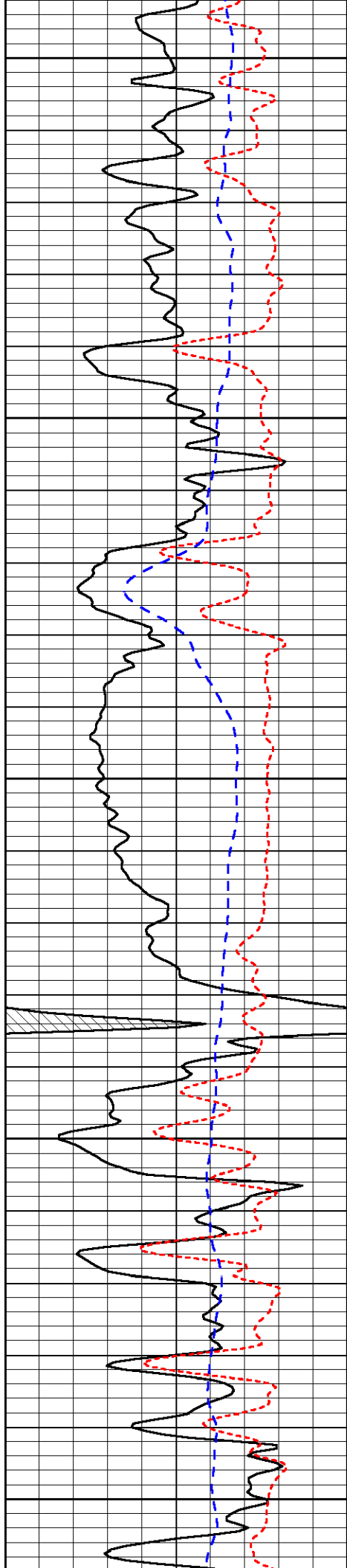


-31

-31

-31

-31



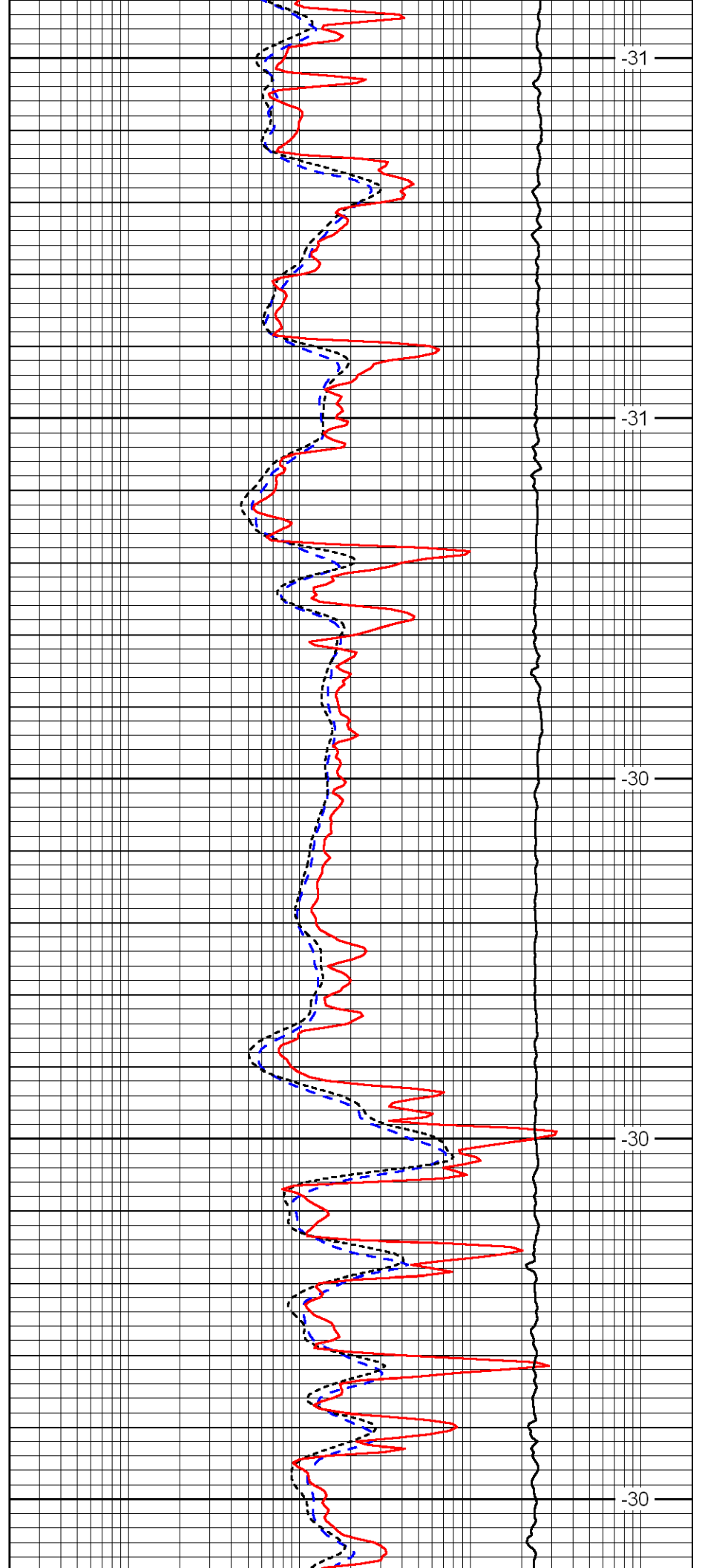
3900

3950

4000

4050

4100



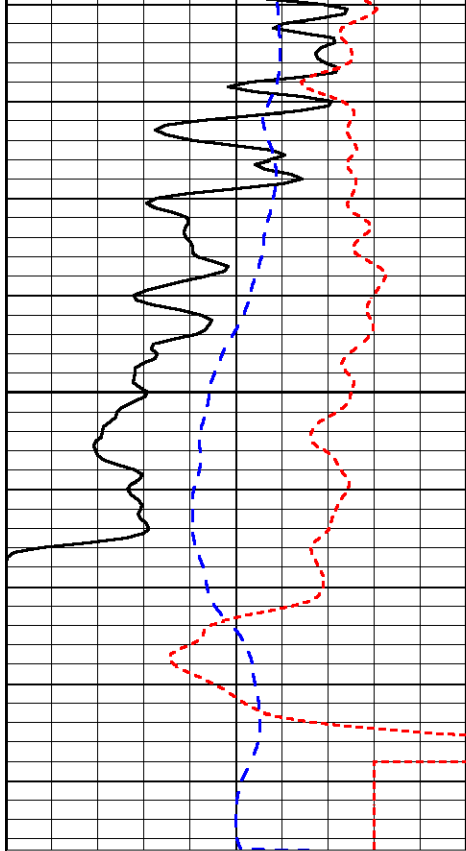
-31

-31

-30

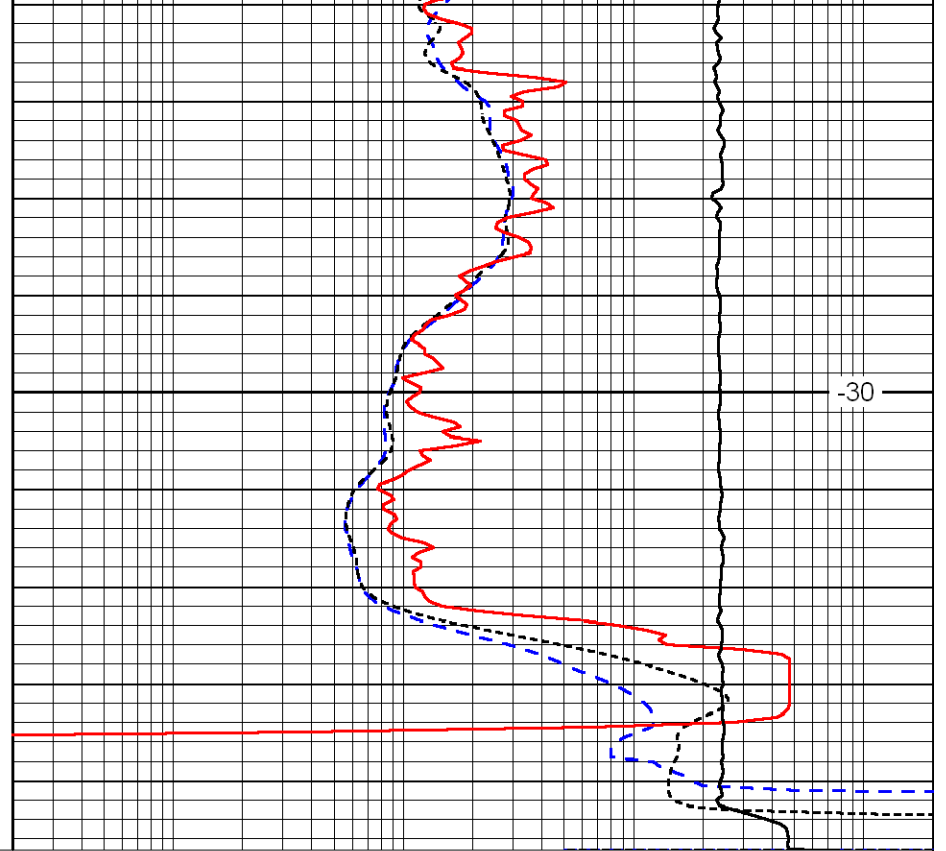
-30

-30



0	Gamma Ray	150
-160	RXO/RT	40
-200	SP	0

4150



0.2	Deep Resistivity	2000
0.2	Medium Resistivity	2000
0.2	Shallow Resistivity	2000
10000	Line Tension	0

-30

LSPD