



DIGITAL LOG (785) 625-3858

Dual Compensated Porosity Log

API No. 15-195-22,781-00-00

Company Hess Oil Company
 Well Ries No. 1-18
 Field Wildcat
 County Trego State Kansas

Location 350' FSL & 2610' FEL

Sec: 18 Twp: 14 S Rge: 22 W

Other Services DIL

Elevation 2203
 K.B. 2208
 D.F. G.L. 2203

Permanent Datum Ground Level Elevation 2203
 Log Measured From Kelly Bushing 5 Ft. Above Perm. Datum
 Drilling Measured From Kelly Bushing

Date 5/17/2012

Run Number One
 Type Log CNL / CDL
 Depth Driller 4190
 Depth Logger 4192
 Bottom Logged Interval 4171
 Top Logged Interval 3400
 Type Fluid In Hole Chemical
 Salinity, PPM CL 1,500
 Density 9.2
 Level Full
 Max. Rec. Temp. F 118
 Operating Rig Time 2 1/2 Hours
 Equipment -- Location 17 Hays
 Recorded By D. Martin
 Witnessed By Jamie Hess

Borehole Record				Casing Record			
Run No	Bit	From	To	Size	Wgt.	From	To
One	12.25	00	230	8.625	23#	00	230
Two	7.875	230	TD				

<<< Fold Here >>>

All interpretations are opinions based on inferences from electrical or other measurements and we cannot and do not guarantee the accuracy or correctness of any interpretation, and we shall not, except in the case of gross or willful negligence on our part, be liable or responsible for any loss, costs, damages, or expenses incurred or sustained by anyone resulting from any interpretation made by any of our officers, agents or employees. These interpretations are also subject to our general terms and conditions set out in our current Price Schedule.

Comments

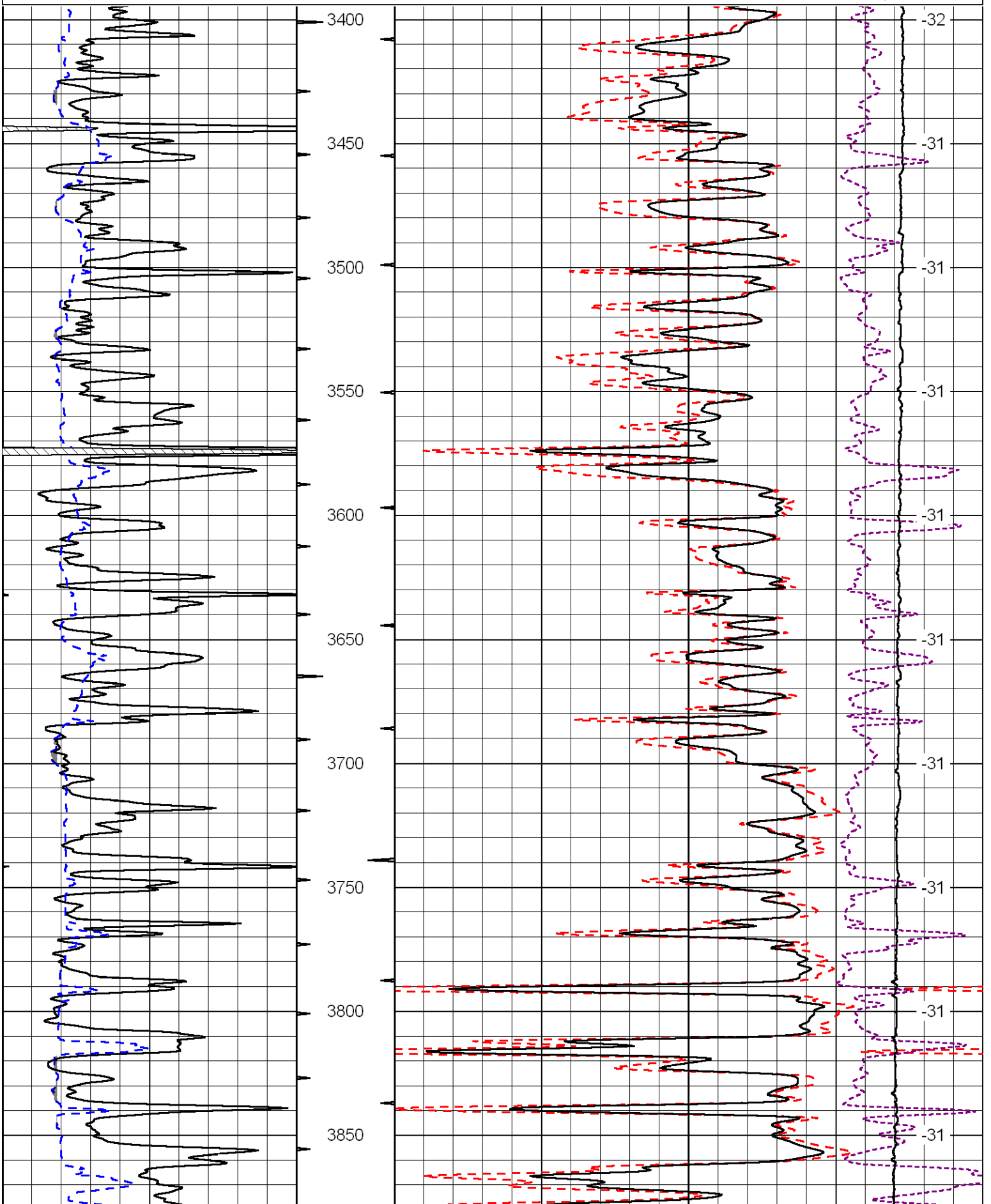
Thank you for using Log-Tech, Inc.
 (785) 625-3858

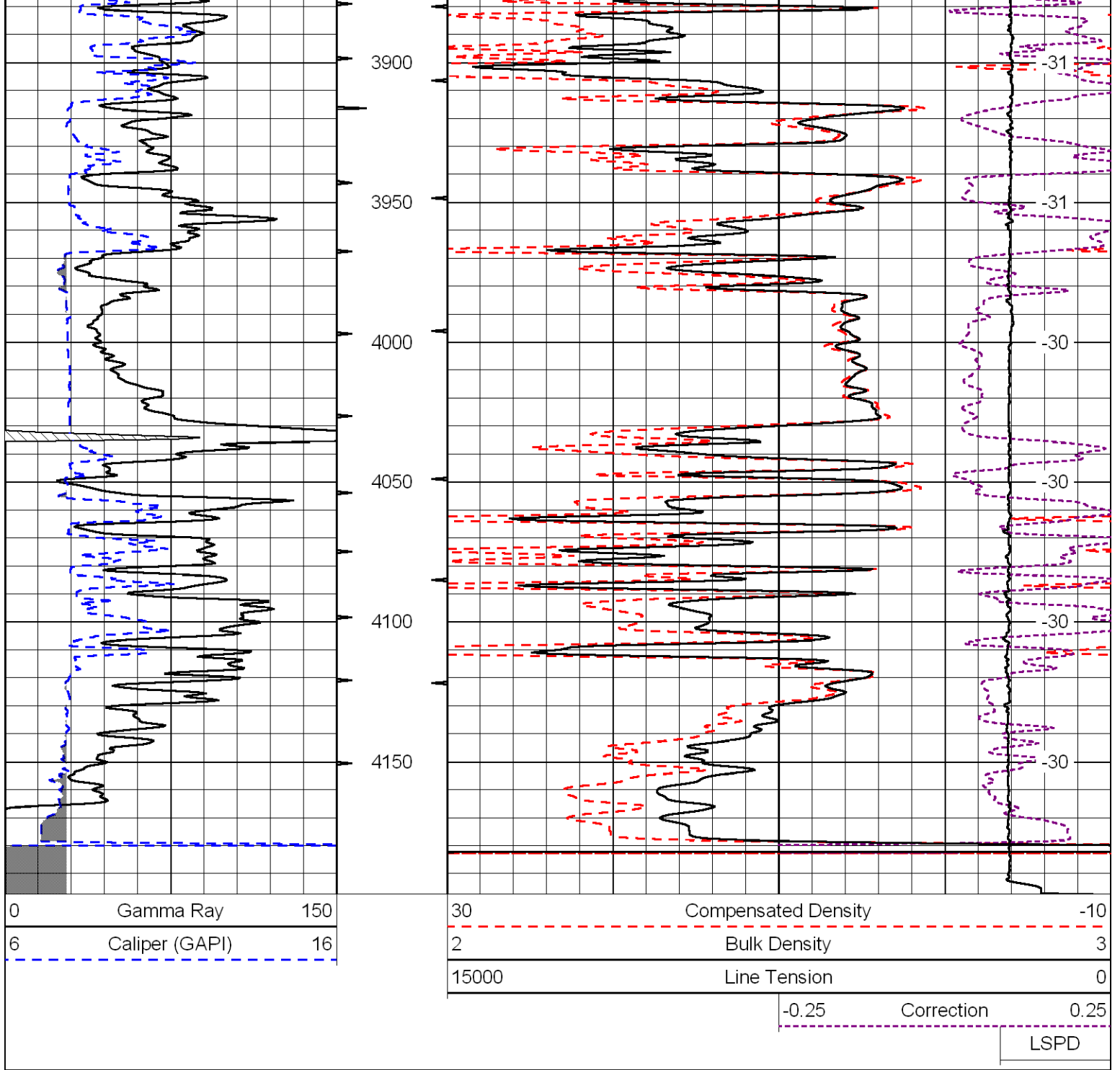
Ogallah Exit on I-70,
 S to Curve(keep straight), 2 S to U Rd.
 3 W, 1 S, W Into

Database File: heshd.db
 Dataset Pathname: DIL/hessstk
 Presentation Format: cdl
 Dataset Creation: Thu May 17 12:49:45 2012
 Charted by: Depth in Feet scaled 1:600

0	Gamma Ray	150
6	Caliper (GAPI)	16

30	Compensated Density	-10
2	Bulk Density	3
15000	Line Tension	0
-0.25	Correction	0.25
		LSPD





Database File: heshd.db
 Dataset Pathname: DIL/hessstk
 Presentation Format: cndlspec
 Dataset Creation: Thu May 17 12:49:45 2012
 Charted by: Depth in Feet scaled 1:240

