



SUPERIOR
Hays,
Kansas

**DUAL INDUCTION
LOG**

Company RAYMOND OIL COMPANY, INC.
Well #1 M & A TRUST
Field WILDCAT
County LANE
State KANSAS

Company RAYMOND OIL COMPANY, INC.
Well #1 M & A TRUST
Field WILDCAT
County LANE State KANSAS

Location: API # : 15-101-22350-0000
850' FNL & 1030' FWL
SEC 27 TWP 20S RGE 29W
Permanent Datum GROUND LEVEL Elevation 2862
Log Measured From KELLY BUSHING 5' A.G.L.
Drilling Measured From KELLY BUSHING
Other Services
CDL/CNL
MEL
Elevation
K.B. 2867
D.F. 2865
G.L. 2862

Date	4/29/12		
Run Number	ONE		
Depth Driller	4819		
Depth Logger	4818		
Bottom Logged Interval	4816		
Top Log Interval	00		
Casing Driller	8 5/8"@261'		
Casing Logger	261		
Bit Size	7 7/8"		
Type Fluid in Hole	CHEMICAL MUD	CHLORIDES 2,300 PPM	
Density / Viscosity	9.3/55		
pH / Fluid Loss	10.5/8.0		
Source of Sample	FLOWLINE		
Rm @ Meas. Temp	1.50@60F		
Rmt @ Meas. Temp	1.13@60F		
Rmc @ Meas. Temp	1.80@60F		
Source of Rmf / Rmc	MEASUREMENT		
Rm @ BHT	.732@123F		
Time Circulation Stopped	2.5 HOURS		
Time Logger on Bottom	11:30 P.M.		
Maximum Recorded Temperature	123F		
Equipment Number	4010		
Location	HAYS, KANSAS		
Recorded By	JEFF LUEBBERS		
Witnessed By	KIM SHOEMAKER		

<<< Fold Here >>>

All interpretations are opinions based on inferences from electrical or other measurements and we cannot and do not guarantee the accuracy or correctness of any interpretation, and we shall not, except in the case of gross or willful negligence on our part, be liable or responsible for any loss, costs, damages, or expenses incurred or sustained by anyone resulting from any interpretation made by any of our officers, agents or employees. These interpretations are also subject to our general terms and conditions set out in our current Price Schedule.

Comments

THANK YOU FOR USING SUPERIOR WELL SERVICE HAYS, KANSAS (785) 628-6395
DIRECTIONS
DIGHTON, KS. 13S. ON HWY 23 TO "RD. 20", 3W., S. INTO



SUPERIOR
Hays,
Kansas

MAIN SECTION

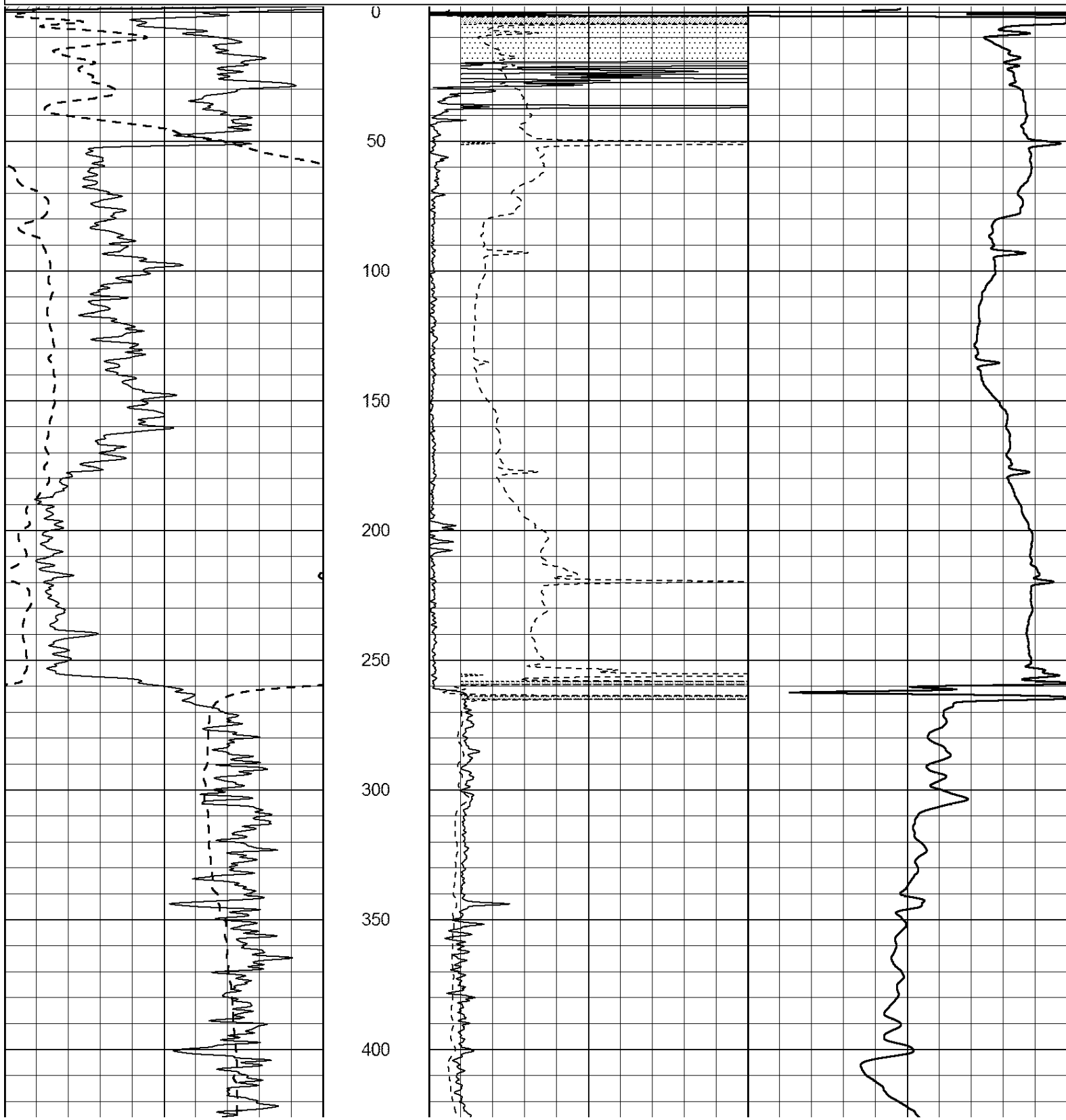
Database File: 408758ddn.db
 Dataset Pathname: pass3.7
 Presentation Format: dil2
 Dataset Creation: Mon Apr 30 01:24:57 2012 by Calc Open-Cased 110302
 Charted by: Depth in Feet scaled 1:600

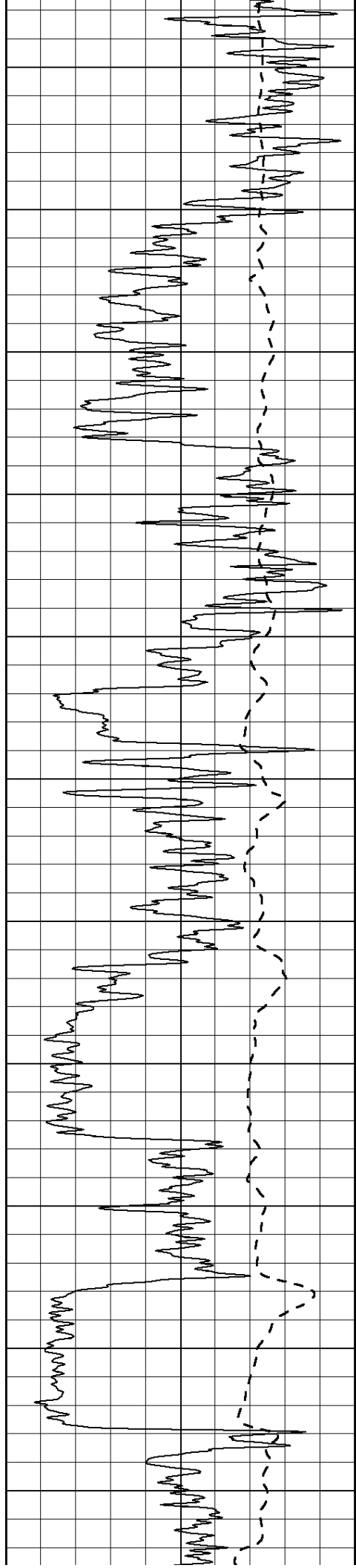
0	Gamma Ray (GAPI)	150
-100	SP (mV)	100

0	RLL3 (Ohm-m)	50
0	RILD (Ohm-m)	50

1000	CILD (mmho/m)	0
------	---------------	---

50	RILD X10 (Ohm-m)	500
50	RLL3 X10 (Ohm-m)	500





450

500

550

600

650

700

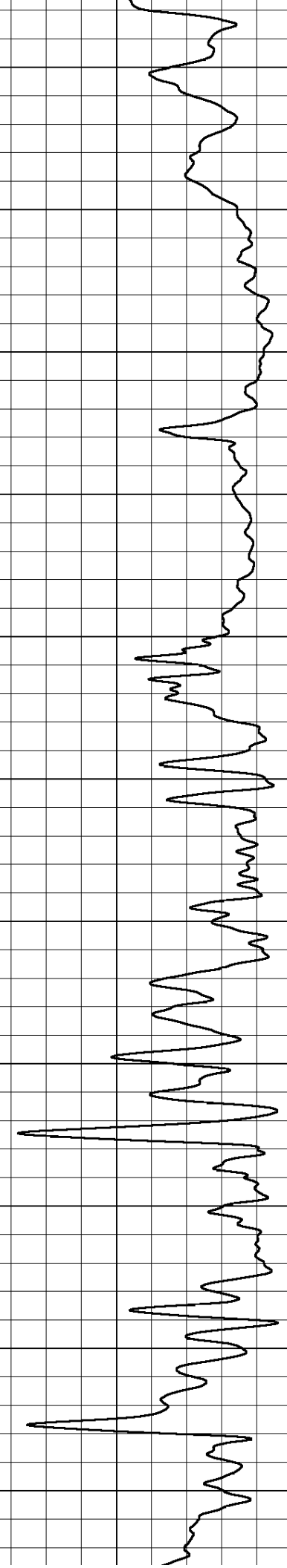
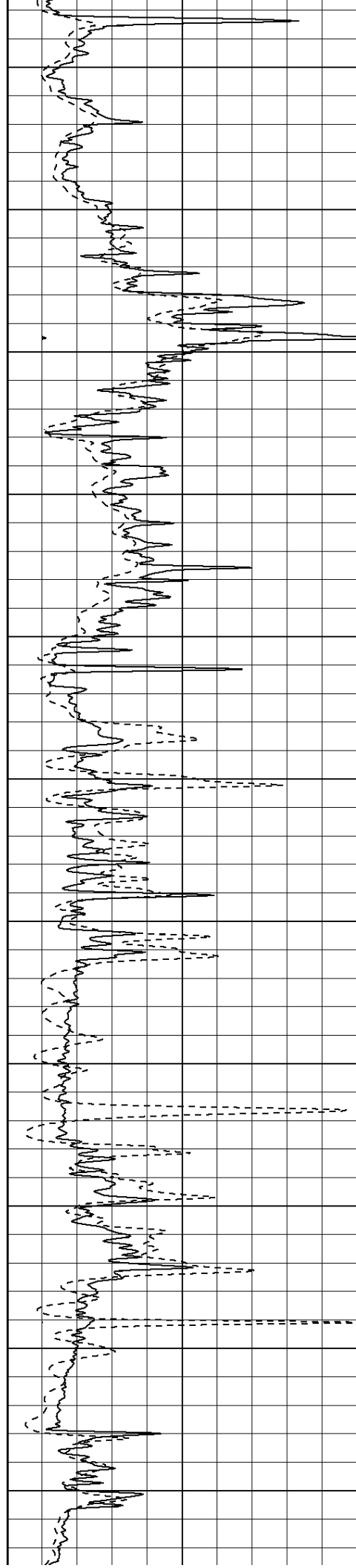
750

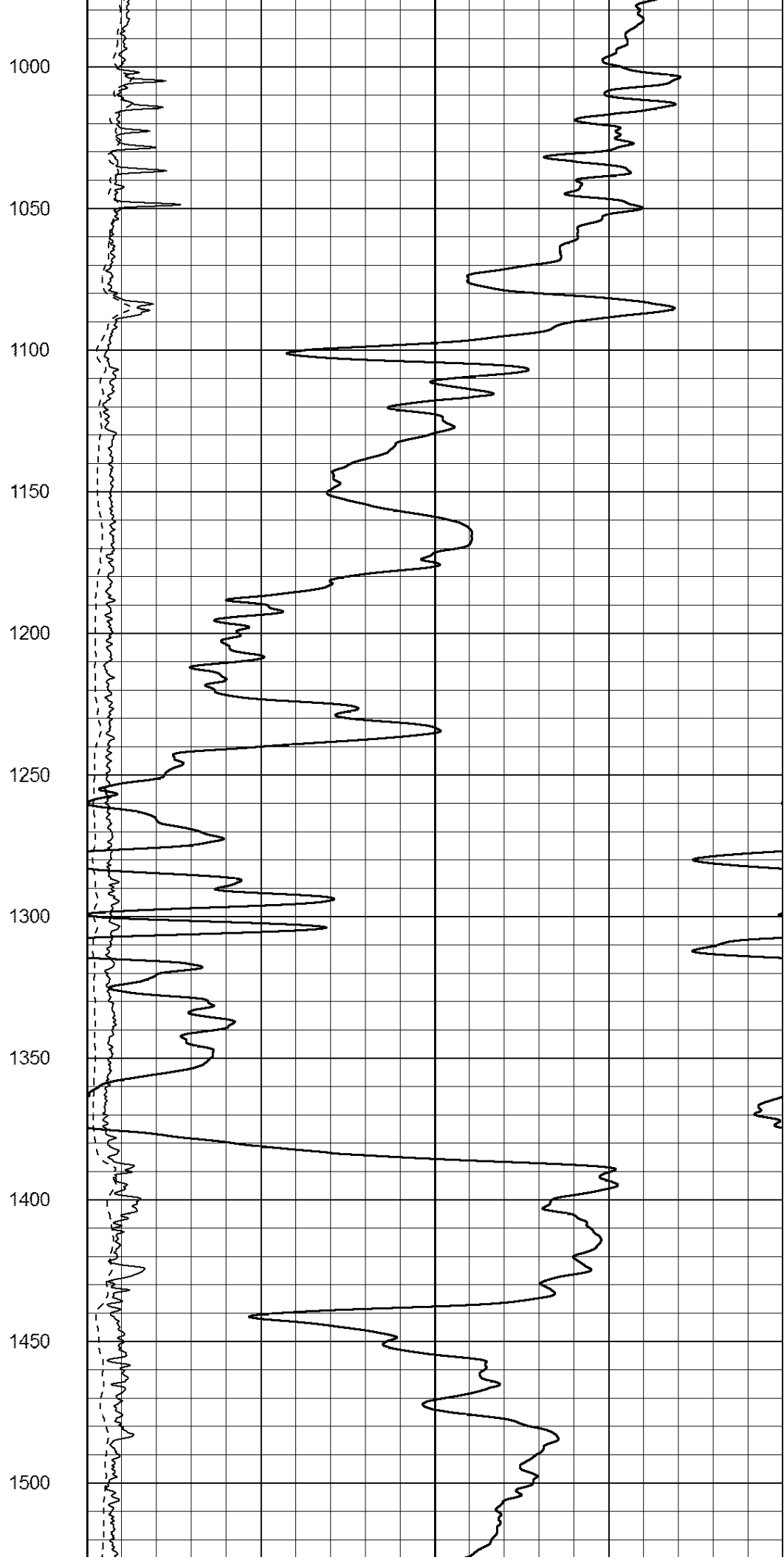
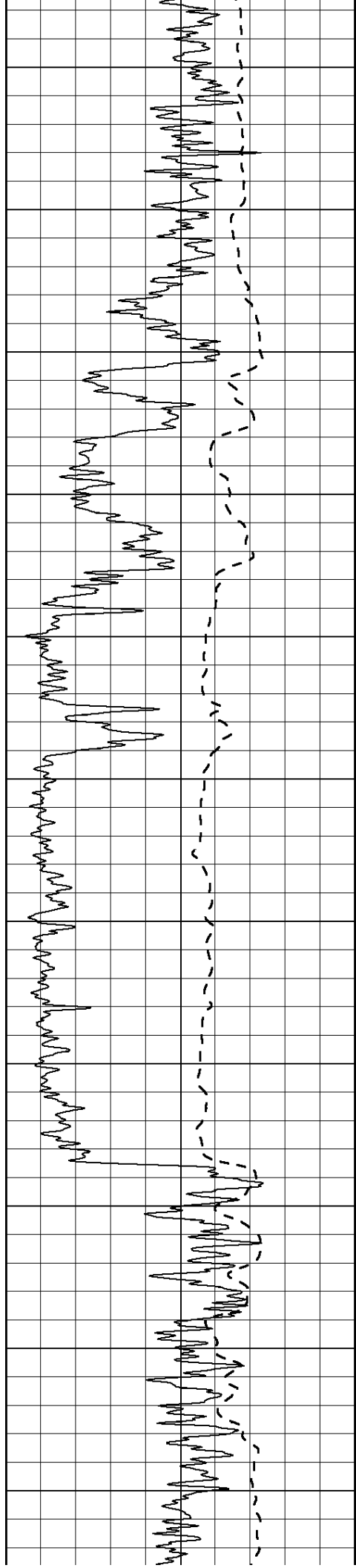
800

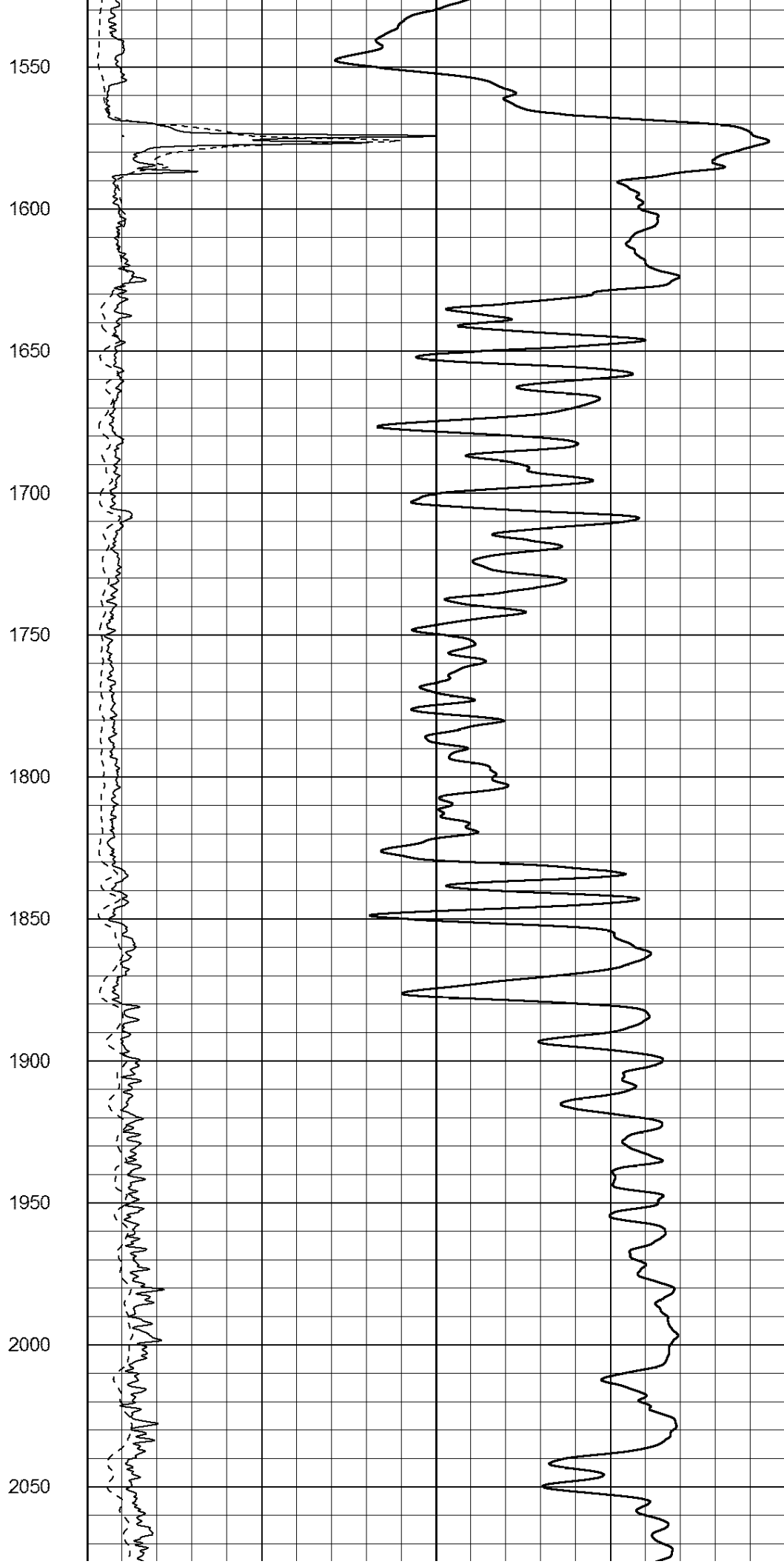
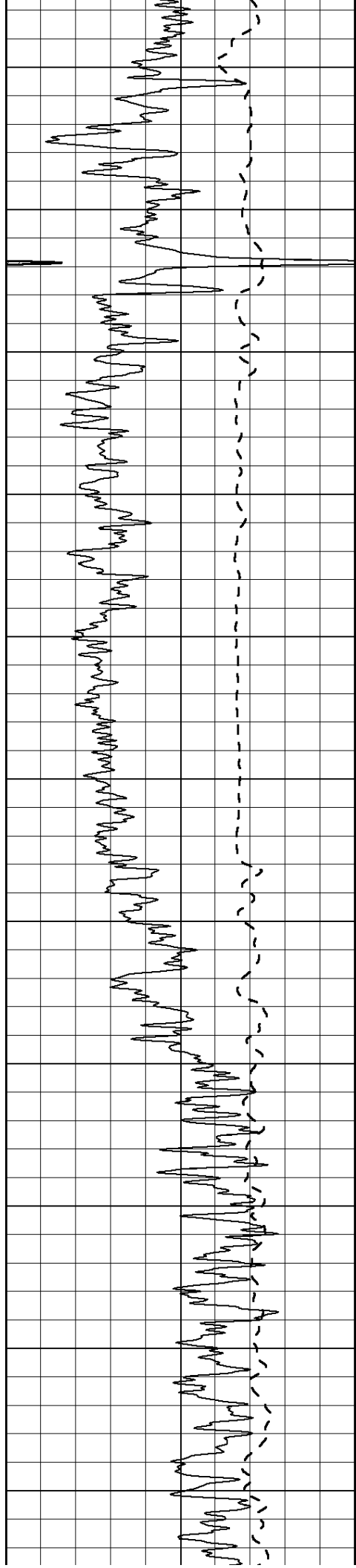
850

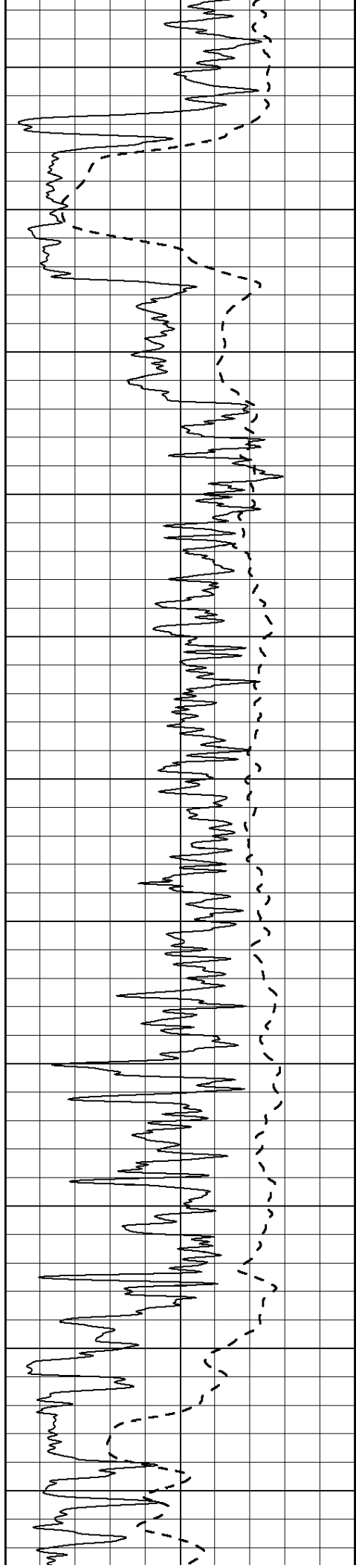
900

950









2100

2150

2200

2250

2300

2350

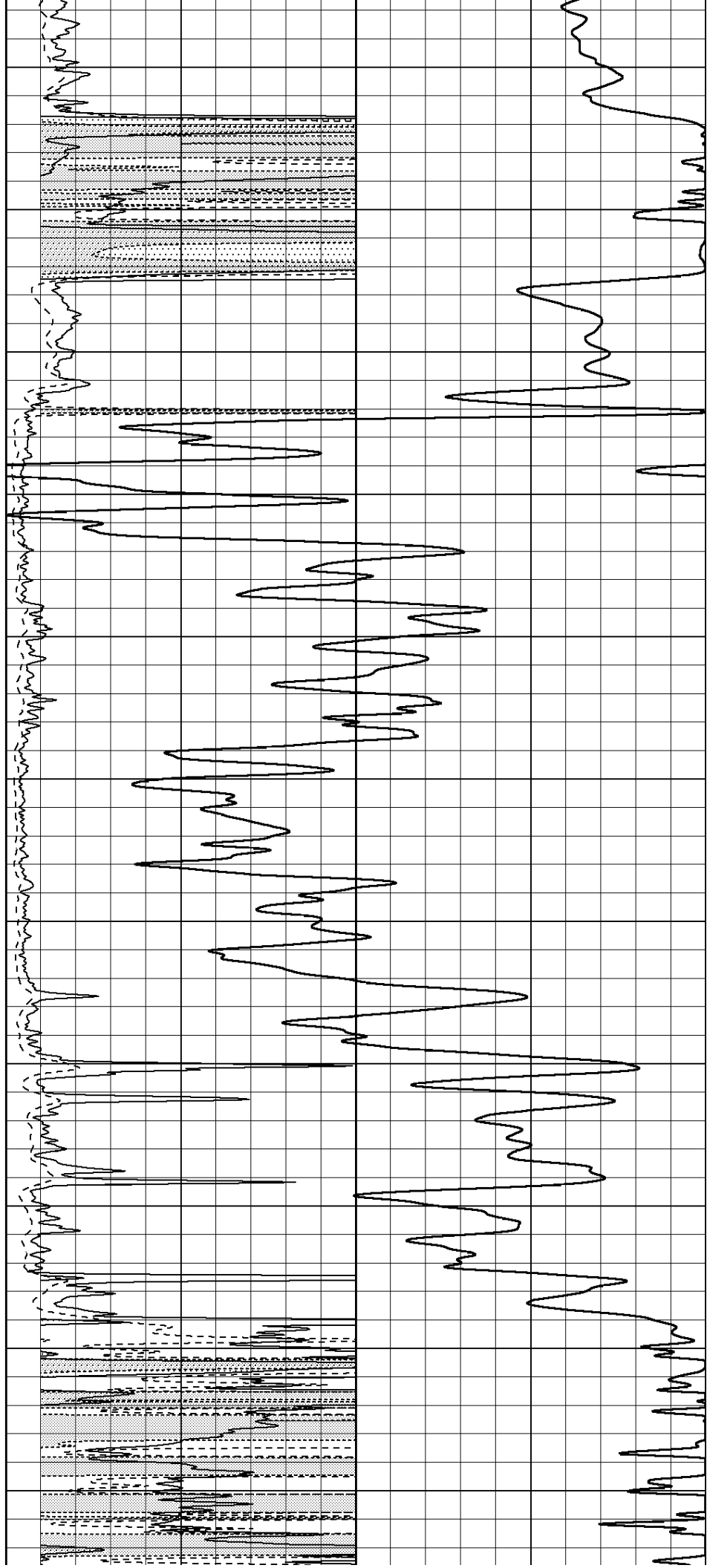
2400

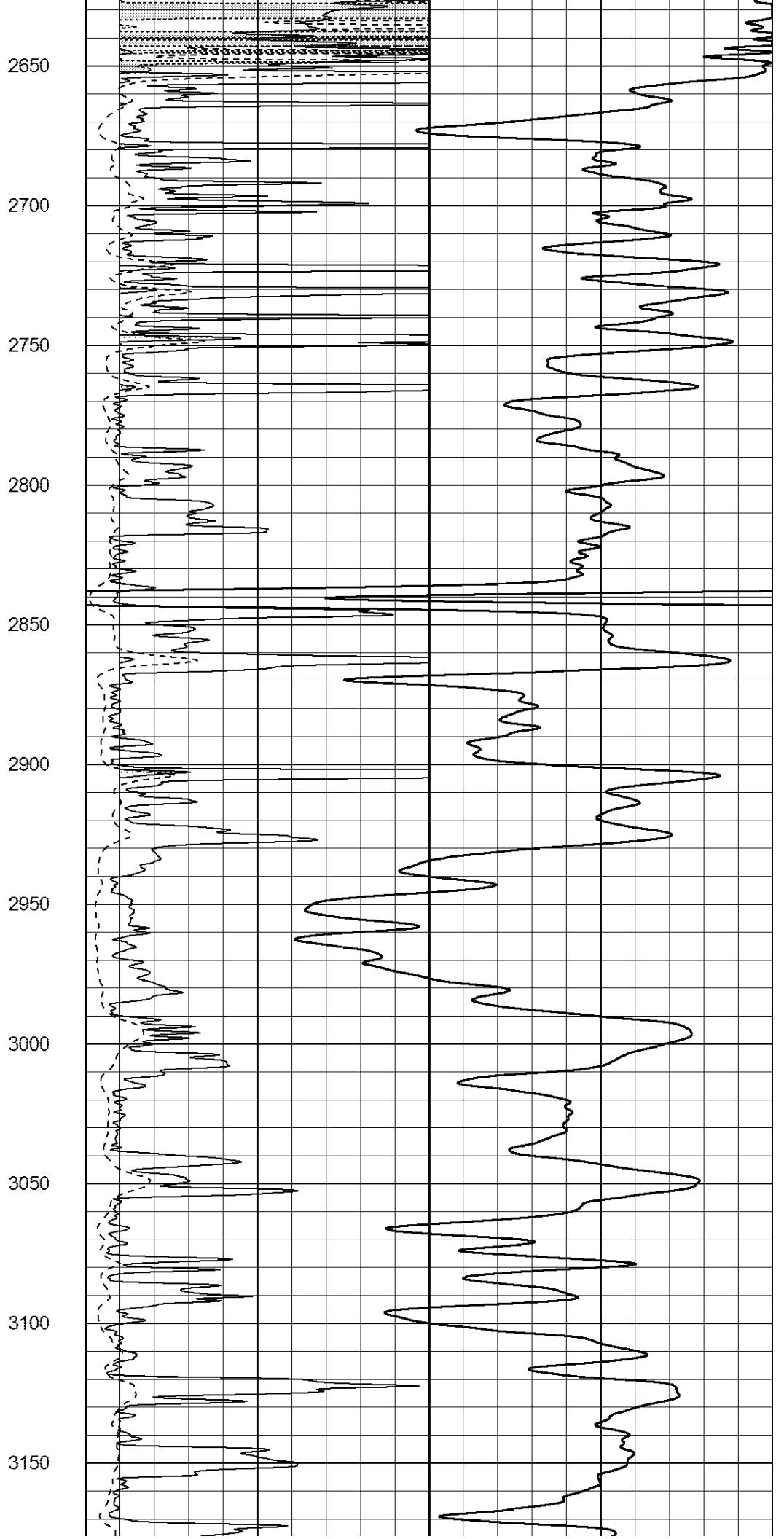
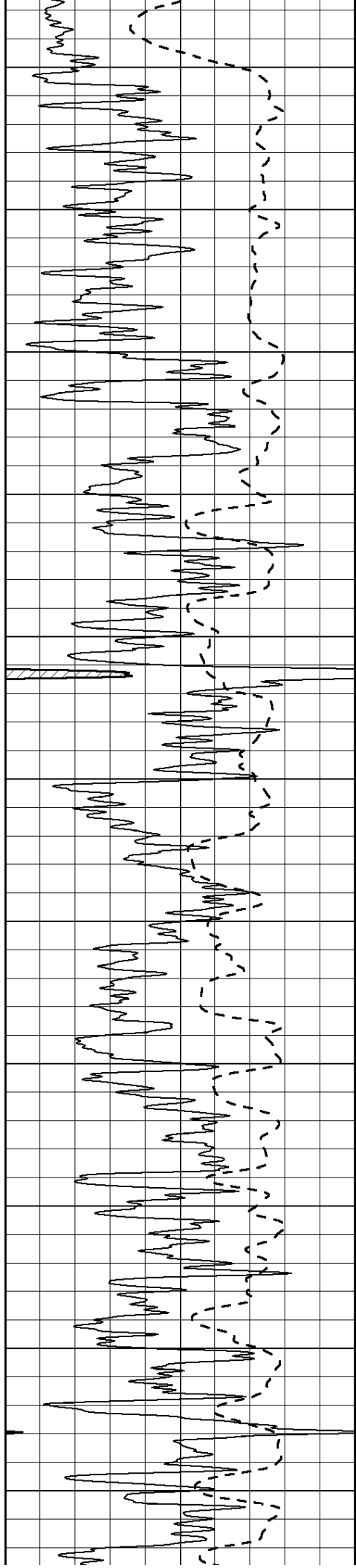
2450

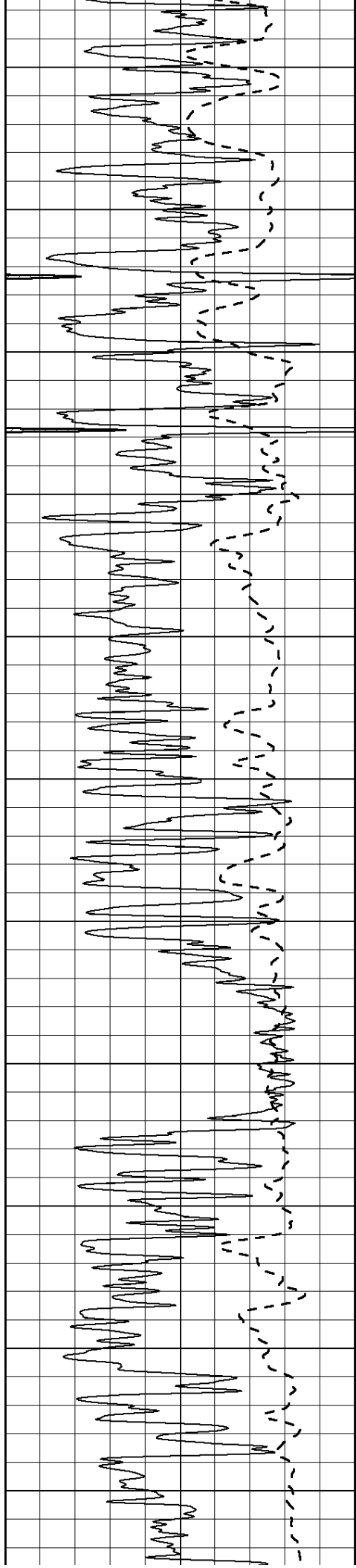
2500

2550

2600







3200

3250

3300

3350

3400

3450

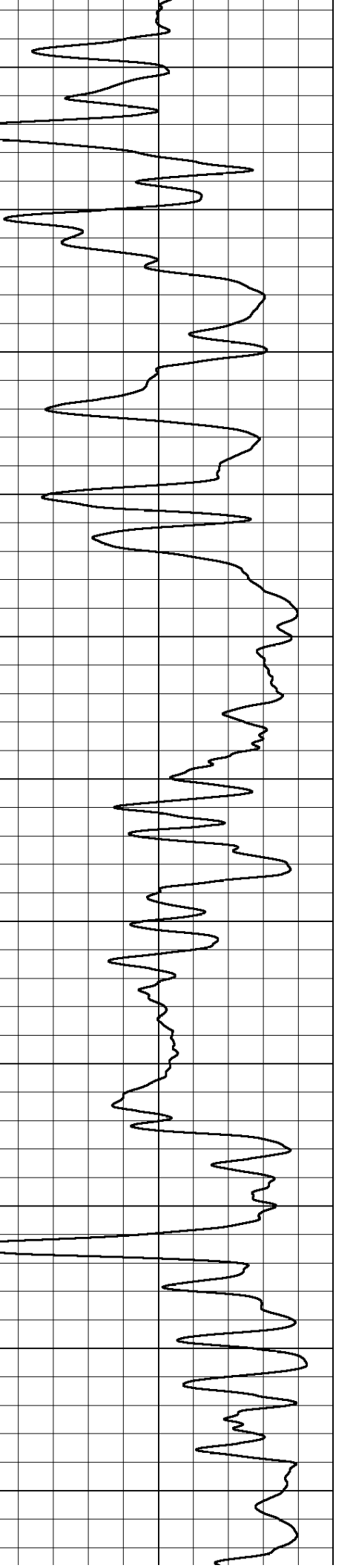
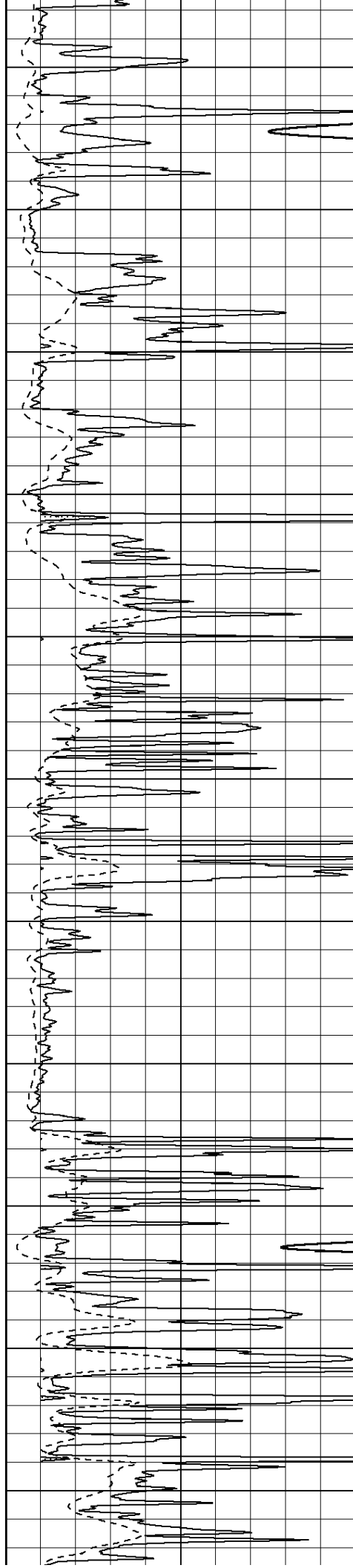
3500

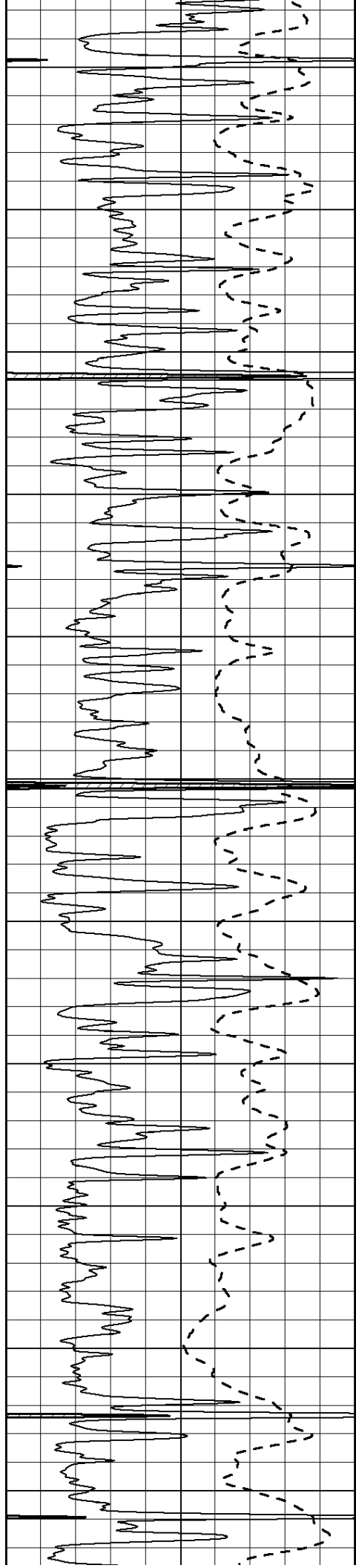
3550

3600

3650

3700





3750

3800

3850

3900

3950

4000

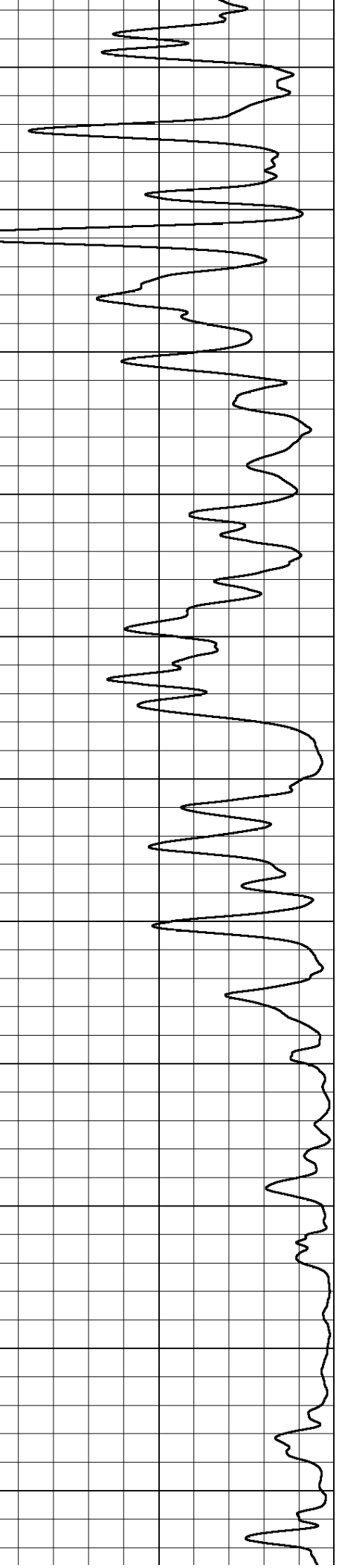
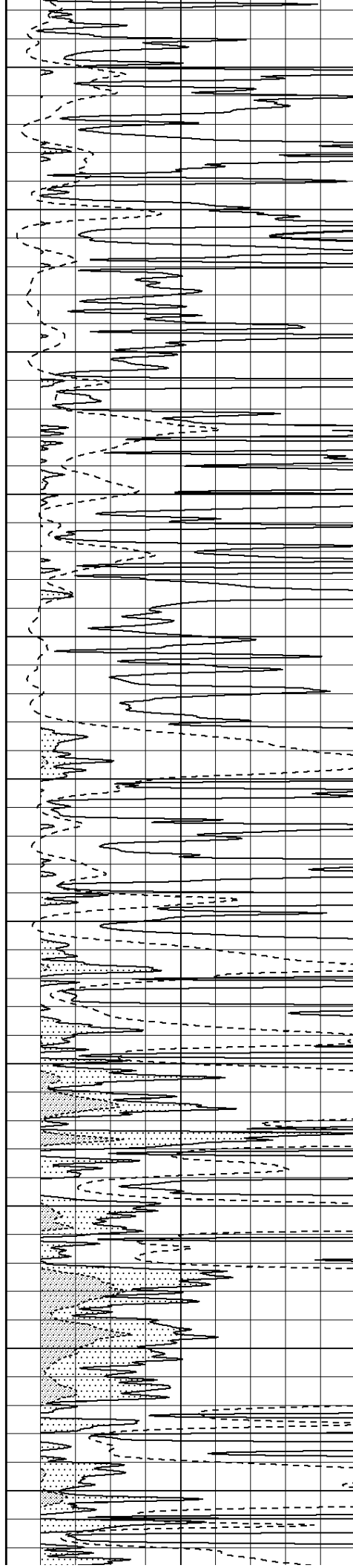
4050

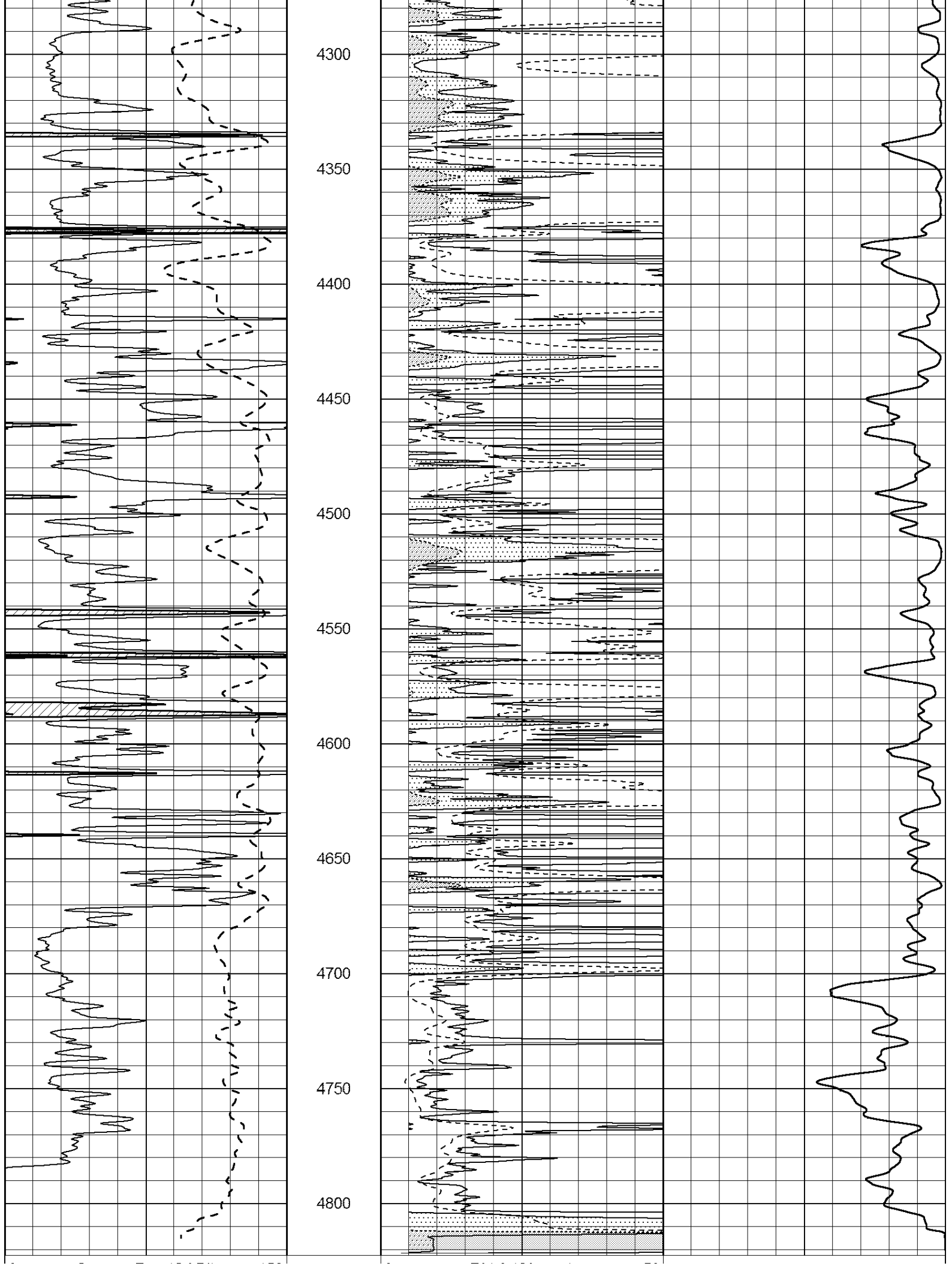
4100

4150

4200

4250





0	Gamma Ray (GAPI)	150
-100	SP (mV)	100

0	RLL3 (Ohm-m)	50

1000	CILD (mmho/m)	0

50	RILD X10 (Ohm-m)	500

50	RLL3 X10 (Ohm-m)	500

0	RLL3 (Ohm-m)	50

1000	CILD (mmho/m)	0

50	RILD X10 (Ohm-m)	500

50	RLL3 X10 (Ohm-m)	500



SUPERIOR
WELL SERVICES

SUPERIOR
Hays,
Kansas

ANHYDRITE

Database File: 408758ddn.db
 Dataset Pathname: pass3.8
 Presentation Format: _dil
 Dataset Creation: Mon Apr 30 01:25:43 2012 by Calc Open-Cased 110302
 Charted by: Depth in Feet scaled 1:240

0	GAMMA RAY (GAPI)	150
-100	SP (mV)	100

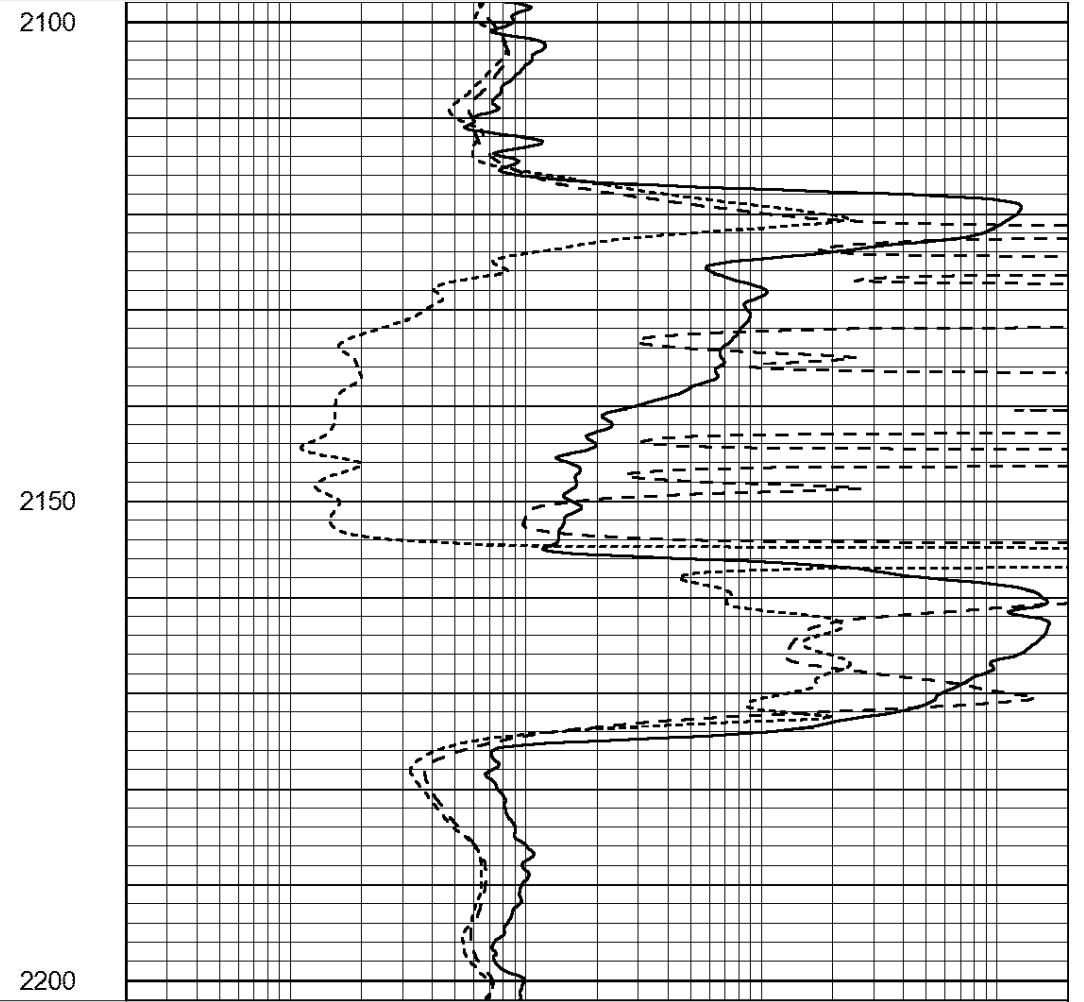
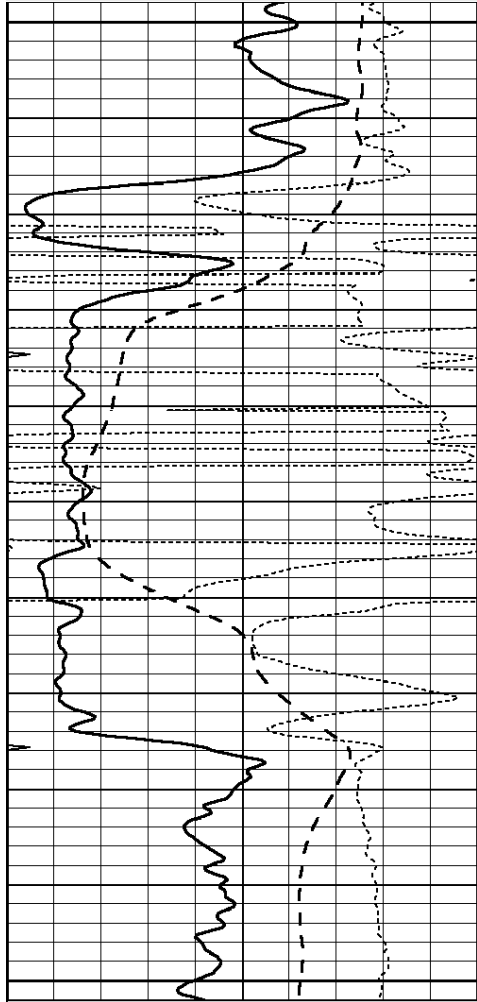
-250	Rxo/Rt	50

0	MINMK	20

0.2	SHALLOW GUARD (Ohm-m)	2000

0.2	DEEP INDUCTION (Ohm-m)	2000

0.2	MEDIUM INDUCTION (Ohm-m)	2000



0	GAMMA RAY (GAPI)	150
-100	SP (mV)	100

-250	Rxo/Rt	50

0	MINMK	20

0.2	SHALLOW GUARD (Ohm-m)	2000

0.2	DEEP INDUCTION (Ohm-m)	2000

0.2	MEDIUM INDUCTION (Ohm-m)	2000



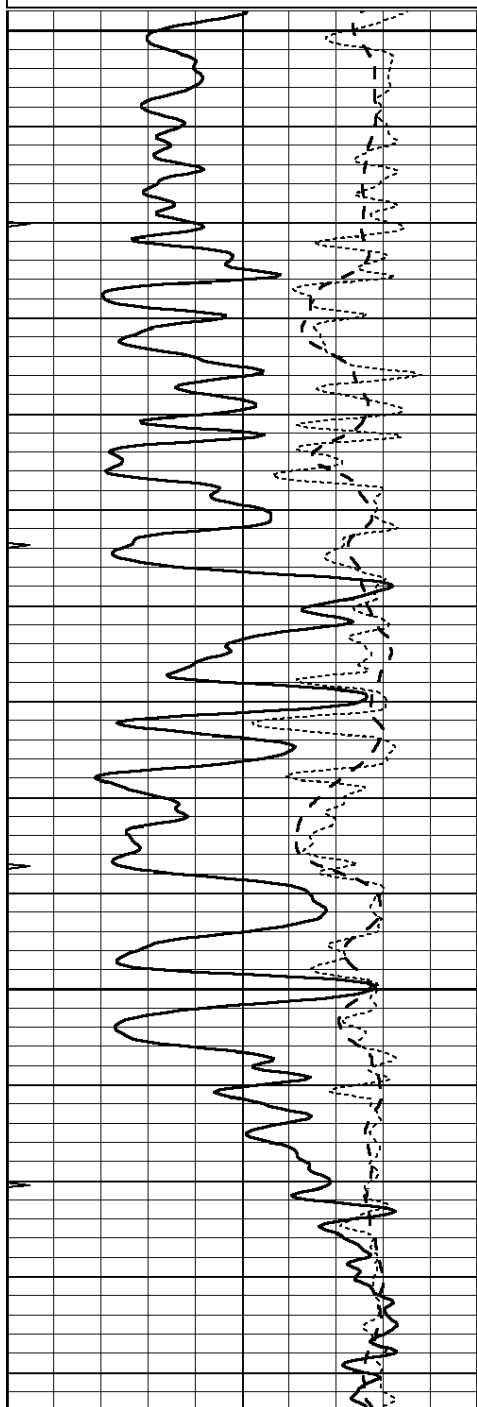
SUPERIOR
Hays,
Kansas

MAIN SECTION

Database File: 408758ddn.db
 Dataset Pathname: pass3.7
 Presentation Format: dil
 Dataset Creation: Mon Apr 30 01:24:57 2012 by Calc Open-Cased 110302
 Charted by: Depth in Feet scaled 1:240

0	GAMMA RAY (GAPI)	150
-100	SP (mV)	100
-250	Rxo/Rt	50
0	MINMK	20

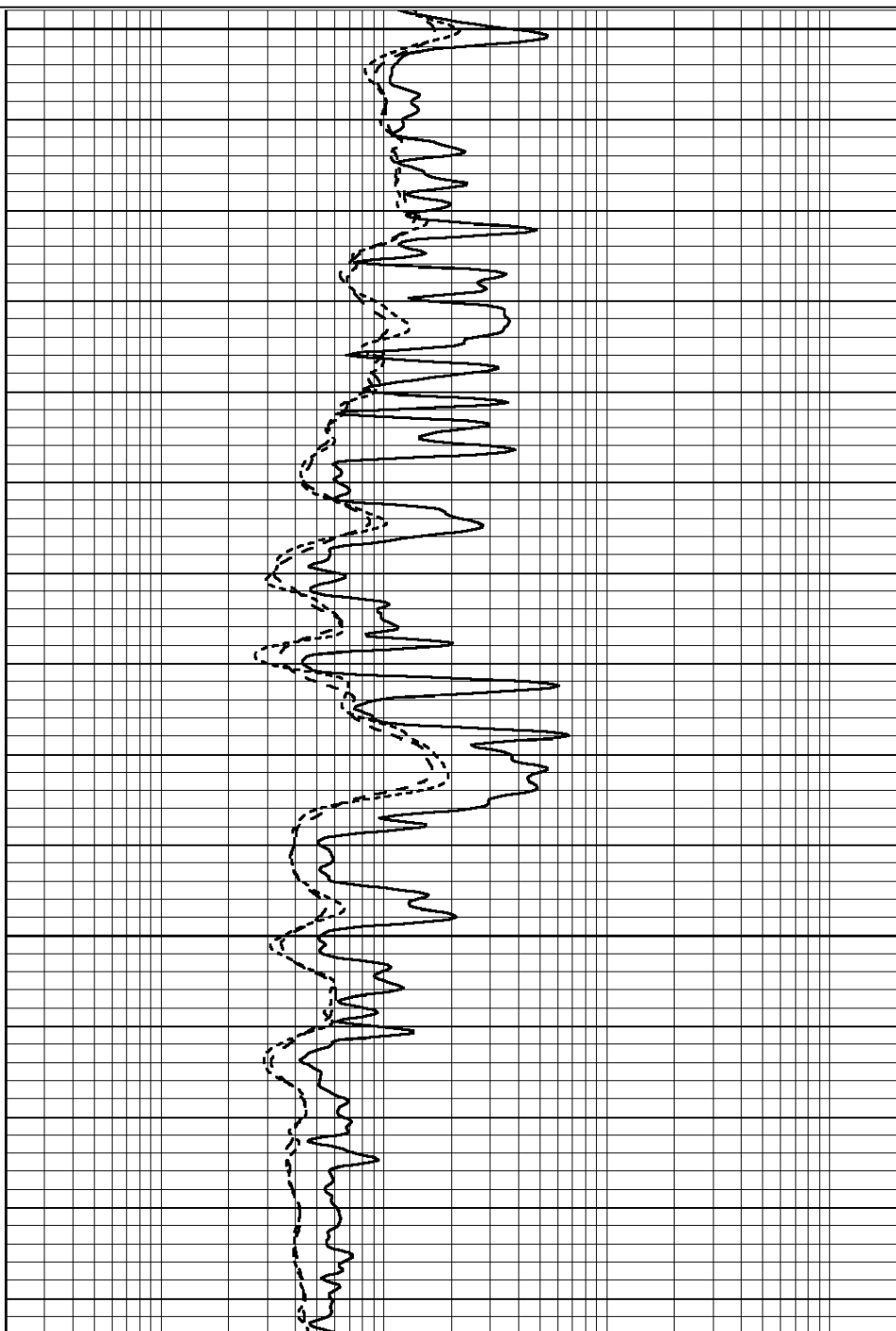
0.2	SHALLOW GUARD (Ohm-m)	2000
0.2	DEEP INDUCTION (Ohm-m)	2000
0.2	MEDIUM INDUCTION (Ohm-m)	2000

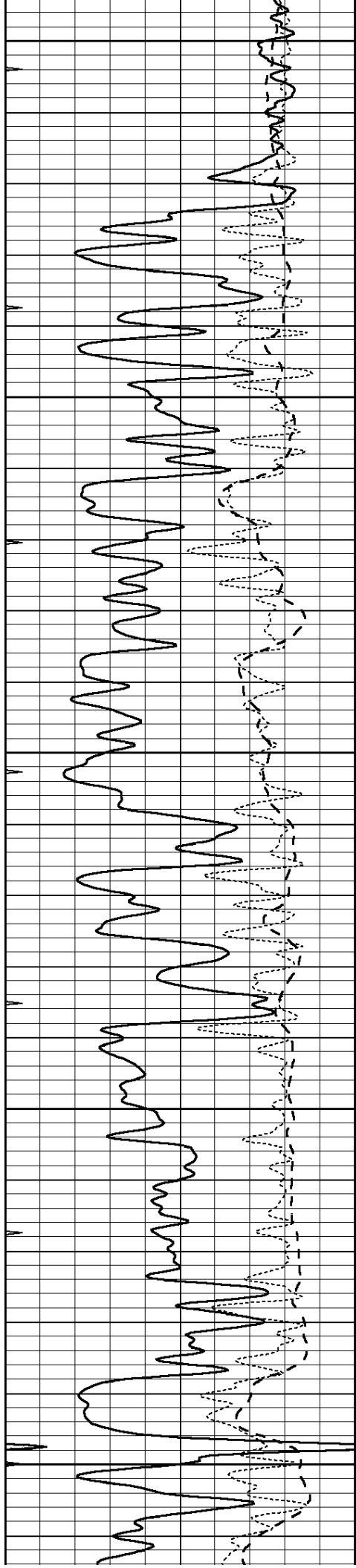


3400

3450

3500





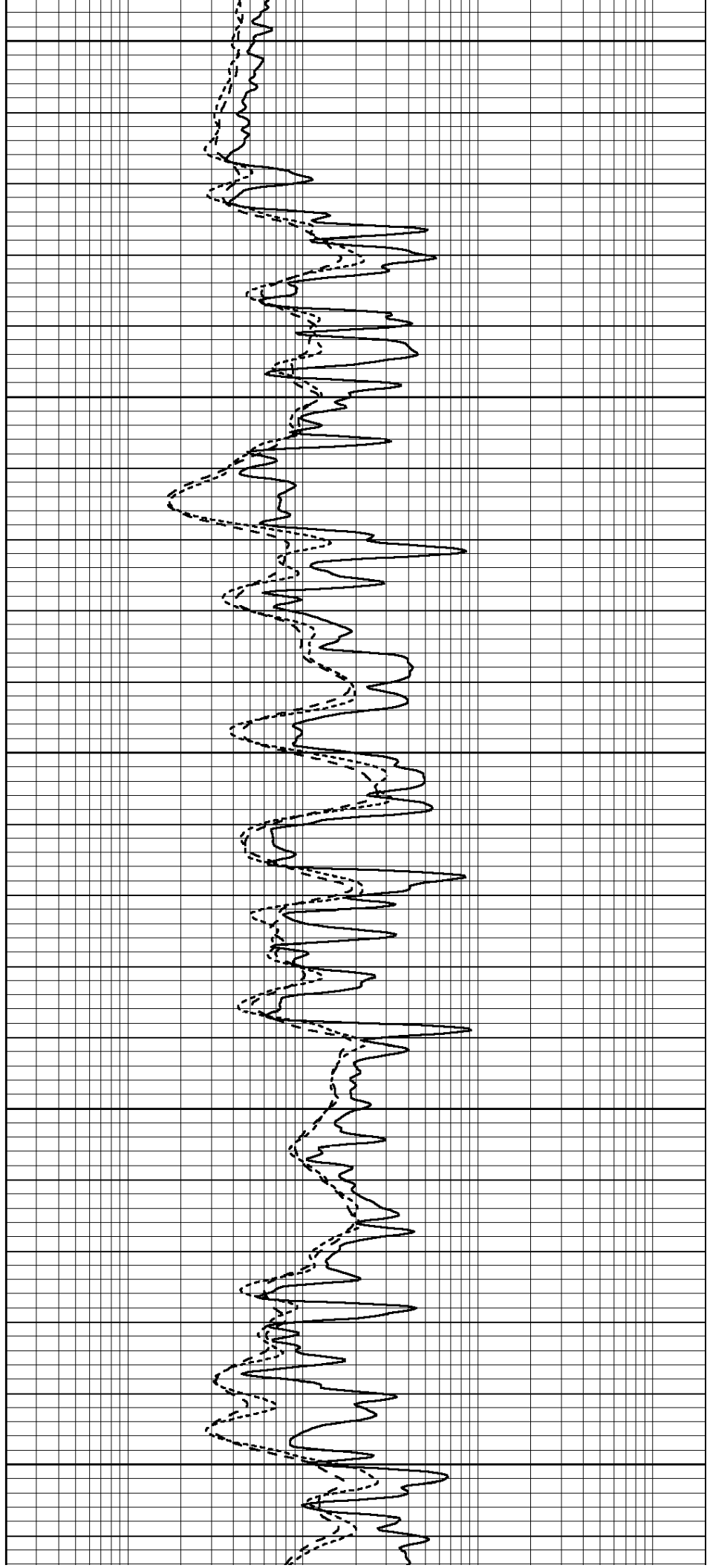
3550

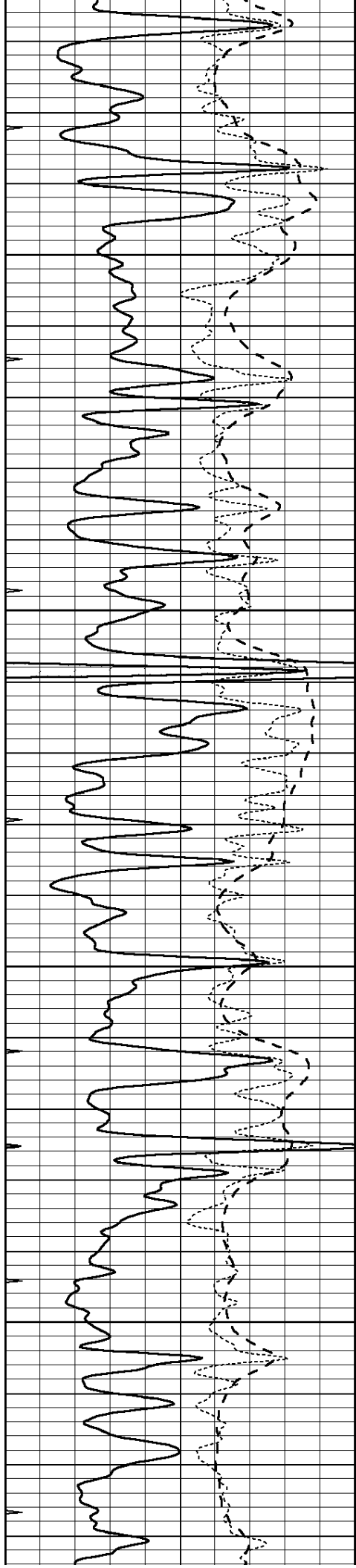
3600

3650

3700

3750



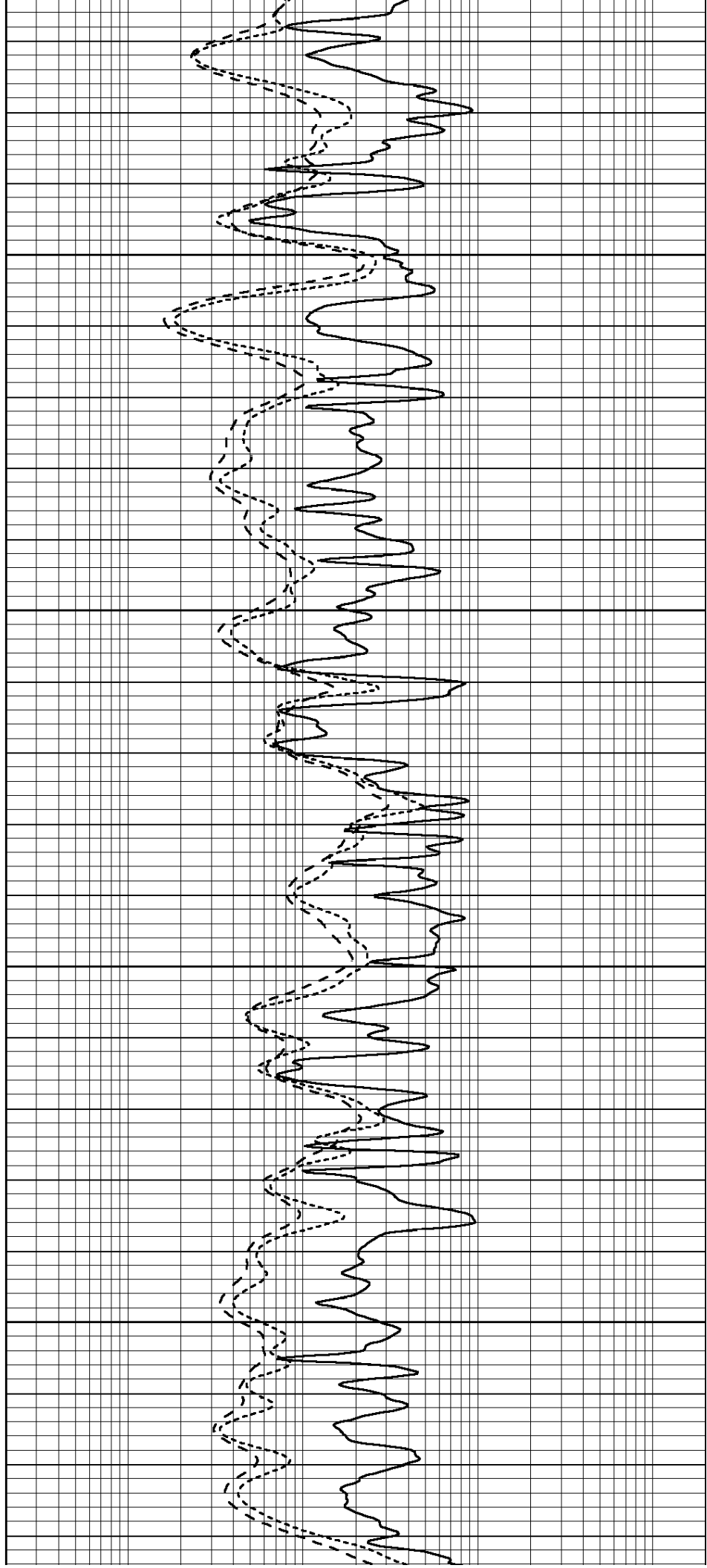


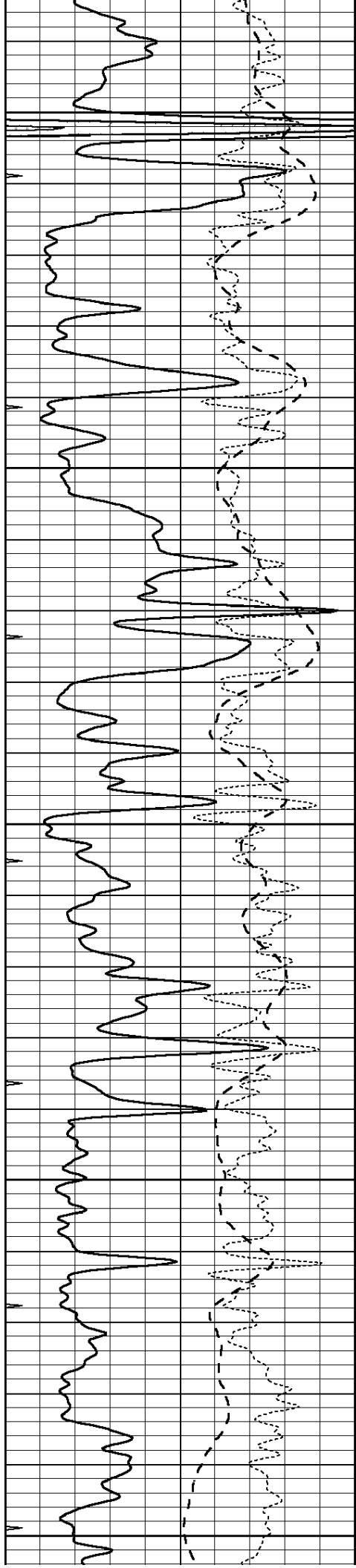
3800

3850

3900

3950





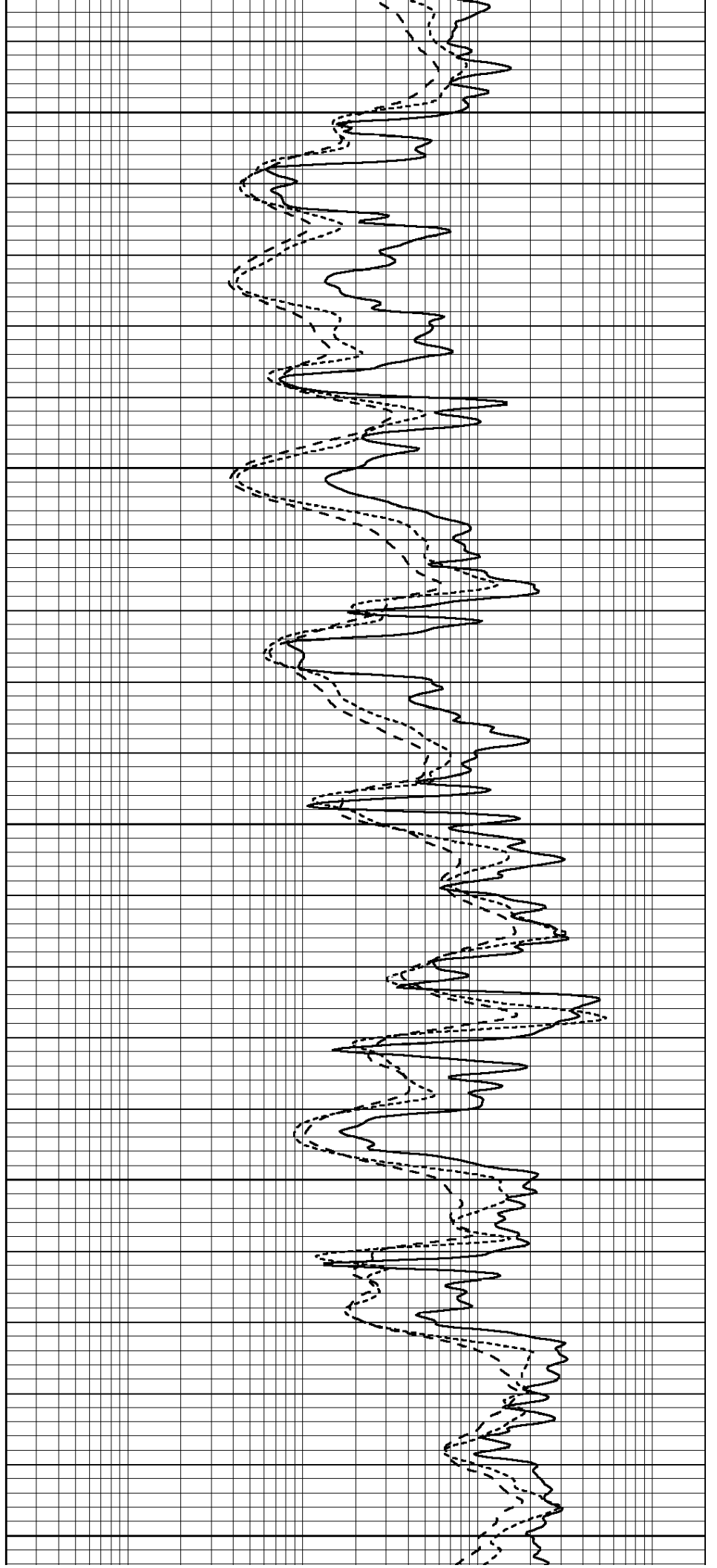
4000

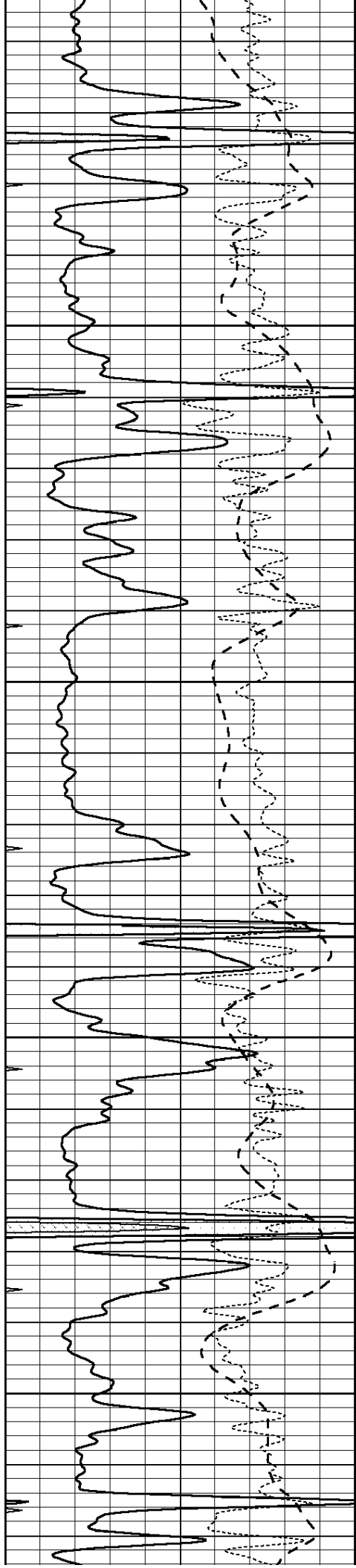
4050

4100

4150

4200



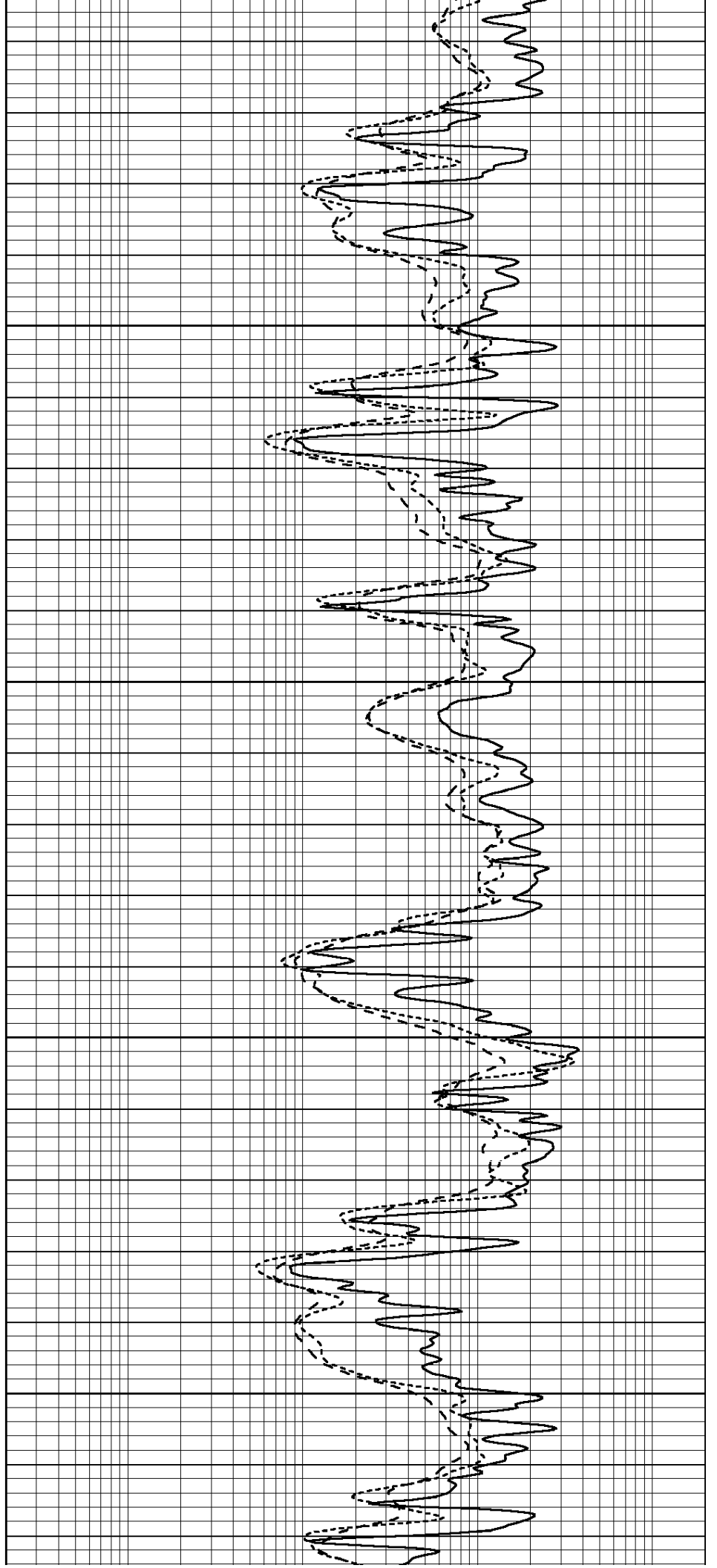


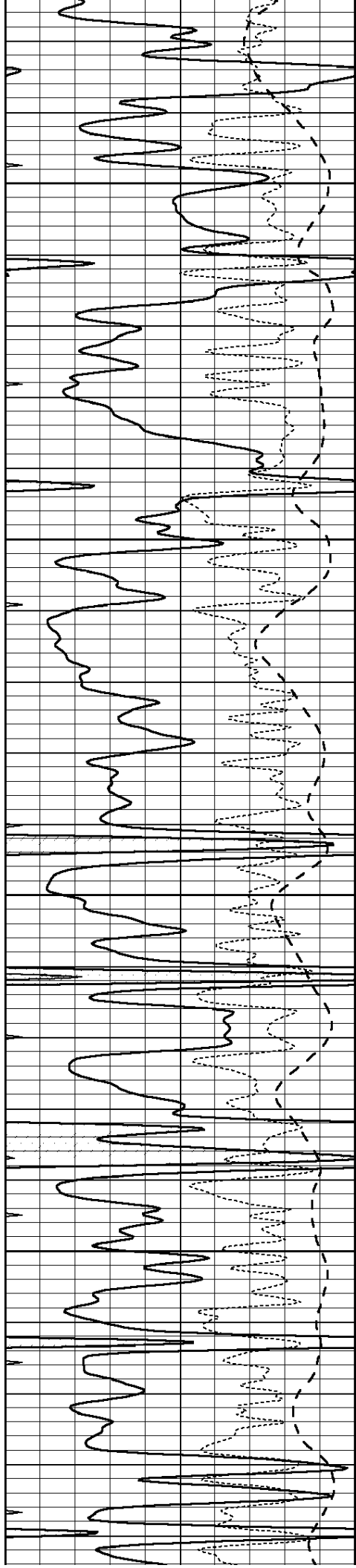
4250

4300

4350

4400



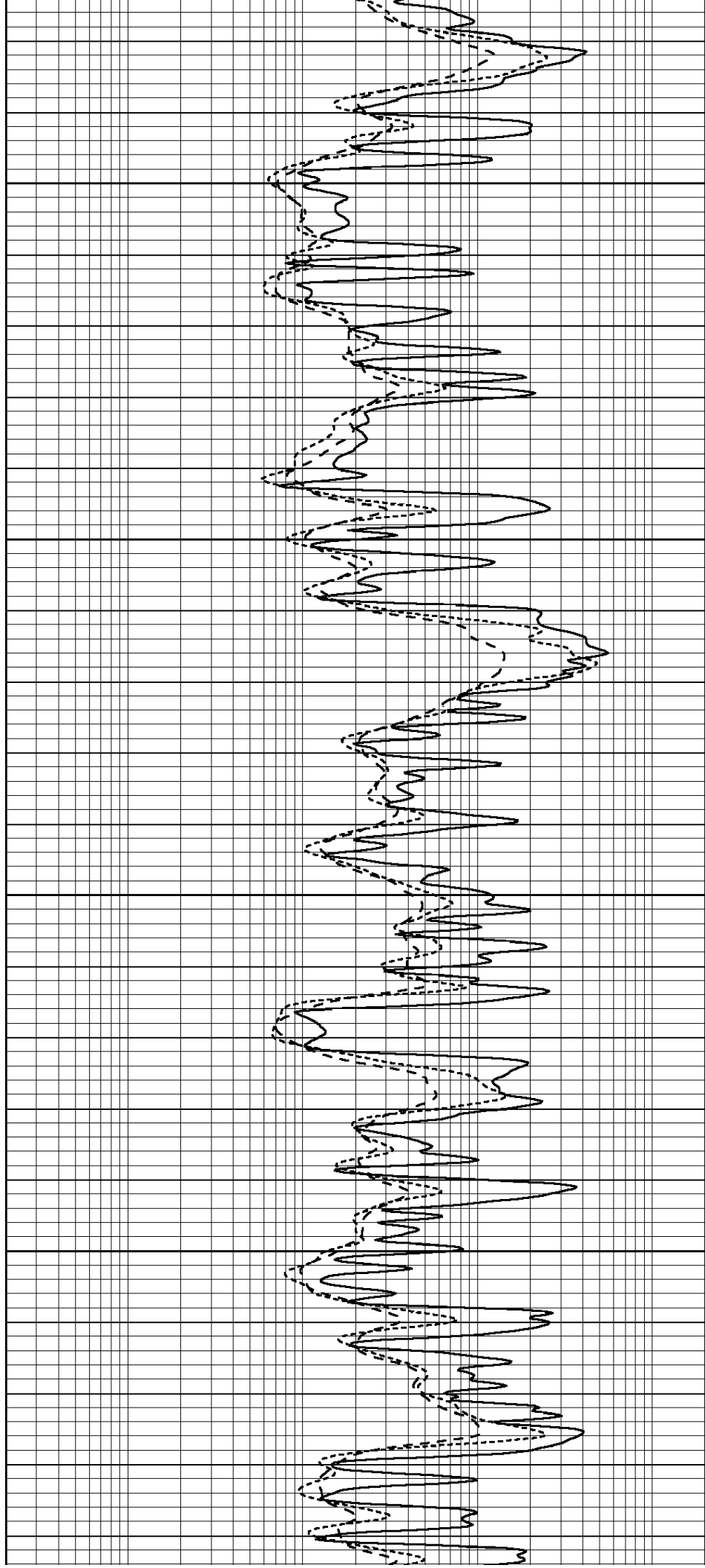


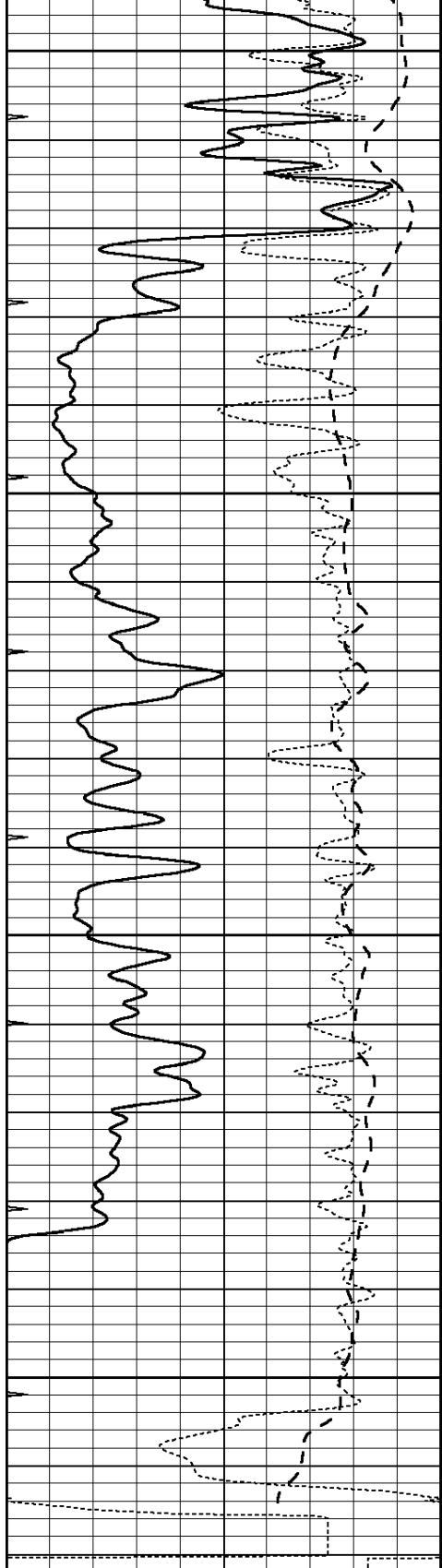
4450

4500

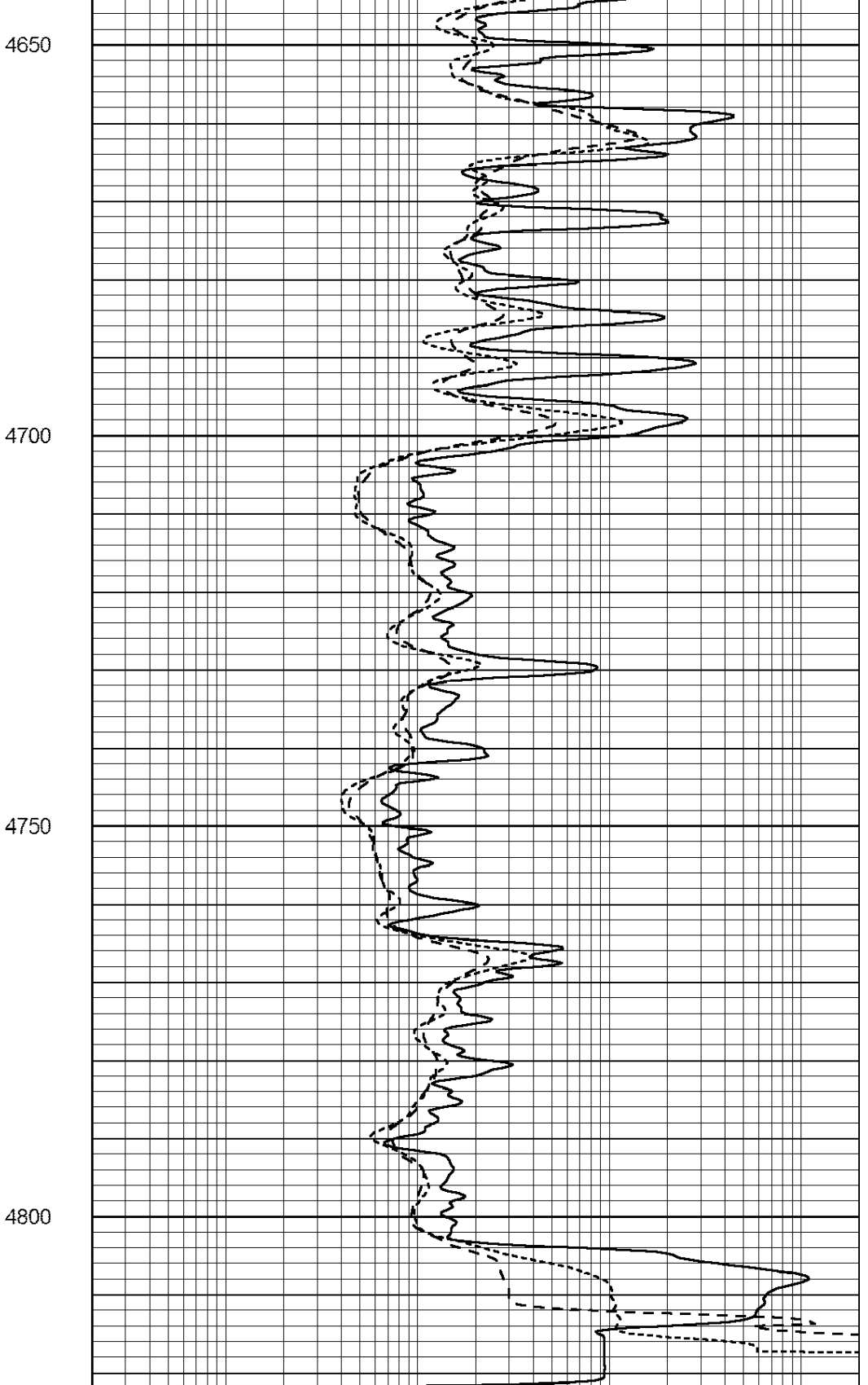
4550

4600





0	GAMMA RAY (GAPI)	150
-100	SP (mV)	100
-250	Rxo/Rt	50
0	MINMK	20



0.2	SHALLOW GUARD (Ohm-m)	2000
0.2	DEEP INDUCTION (Ohm-m)	2000
0.2	MEDIUM INDUCTION (Ohm-m)	2000



SUPERIOR
Have

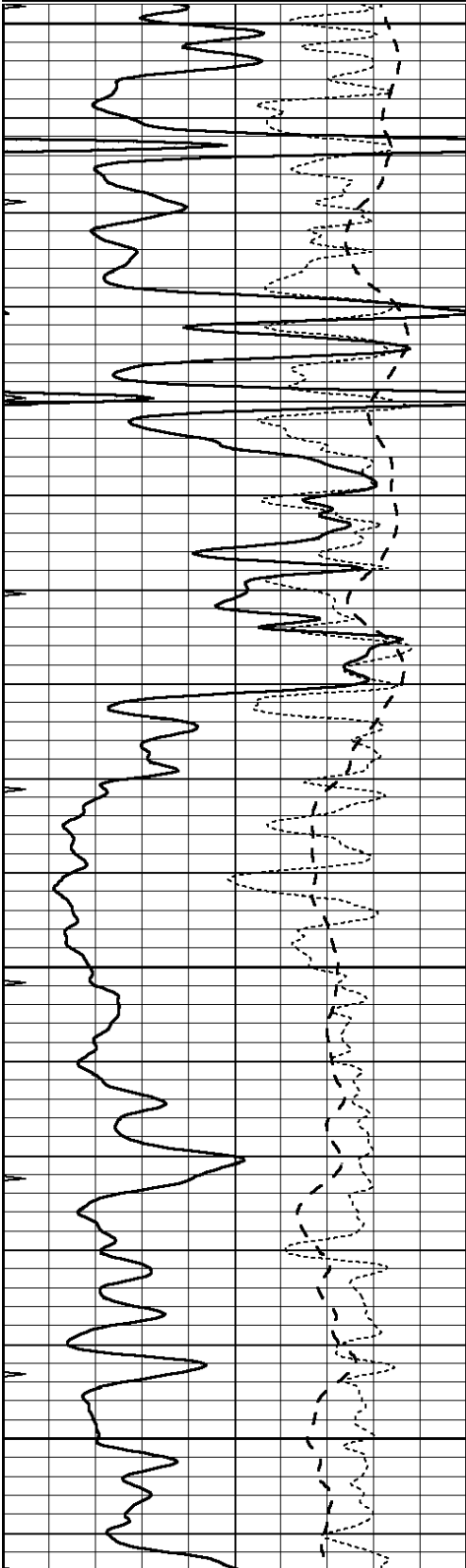
REPEAT SECTION



Database File: 408758ddn.db
 Dataset Pathname: pass2.3
 Presentation Format: dil
 Dataset Creation: Mon Apr 30 01:03:15 2012 by Calc Open-Cased 110302
 Charted by: Depth in Feet scaled 1:240

0	GAMMA RAY (GAPI)	150
-100	SP (mV)	100
-250	Rxo/Rt	50
0	MINMK	20

0.2	SHALLOW GUARD (Ohm-m)	2000
0.2	DEEP INDUCTION (Ohm-m)	2000
0.2	MEDIUM INDUCTION (Ohm-m)	2000

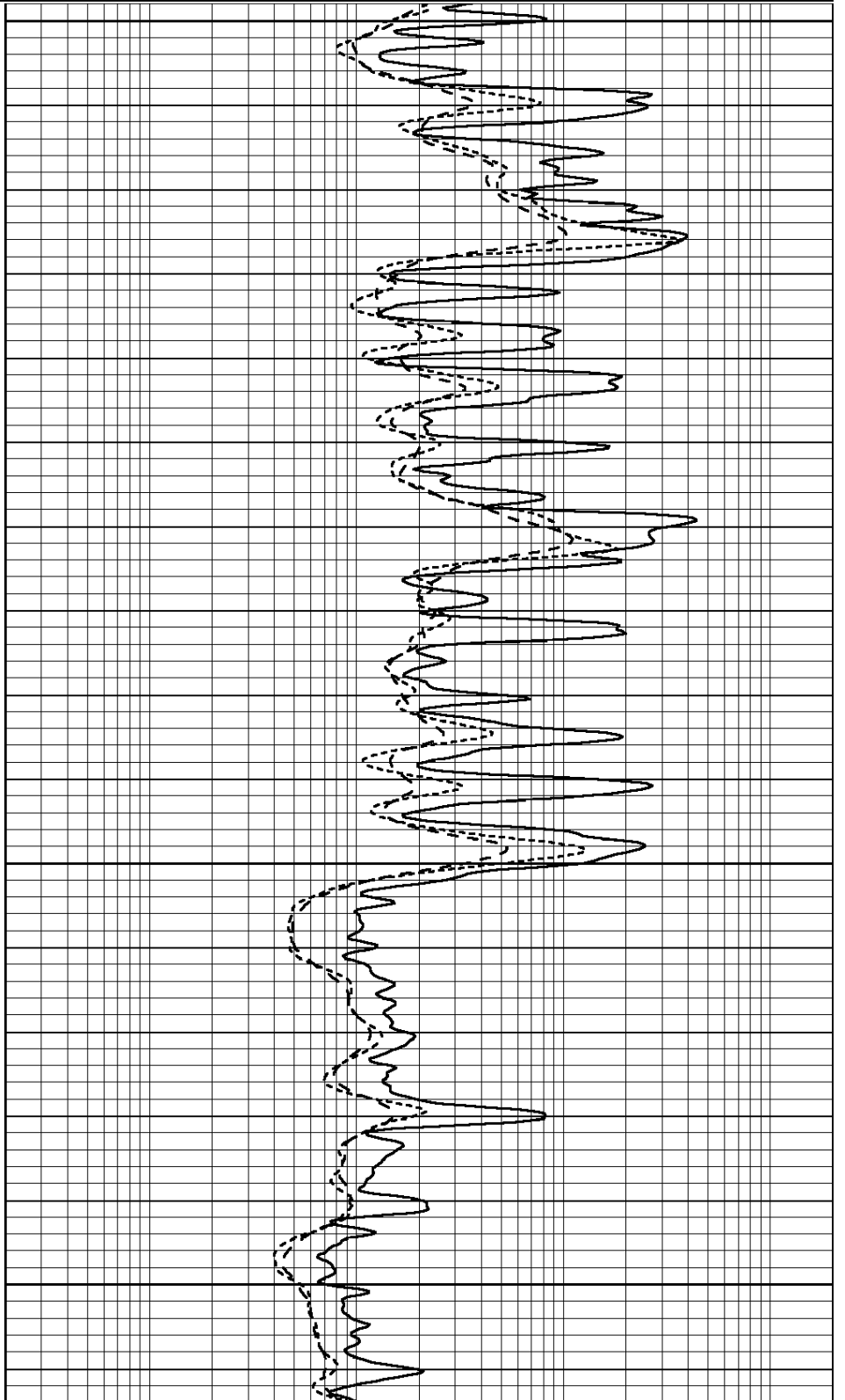


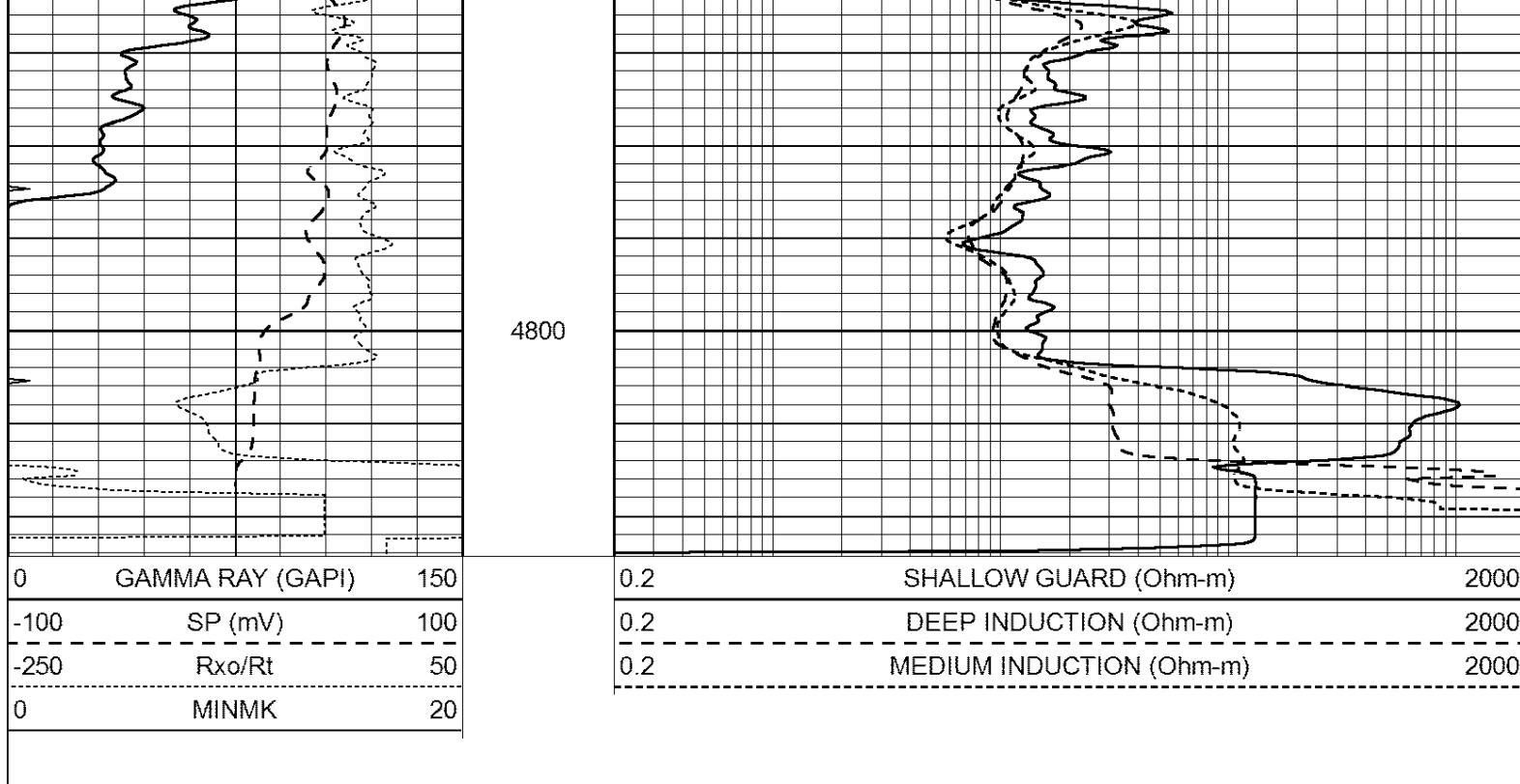
4600

4650

4700

4750





Calibration Report

Database File: 408758ddn.db
 Dataset Pathname: pass3.7
 Dataset Creation: Mon Apr 30 01:24:57 2012 by Calc Open-Cased 110302

Dual Induction Calibration Report

Serial-Model: DIL4-GEAR
 Performed: Fri Apr 27 01:14:54 2012

Loop:	Readings				References		Results	
	Air	Loop			Air	Loop	m	b
Deep	0.008	0.666	V	0.000	400.000	mmho/m	570.000	-1.000
Medium	-0.003	0.769	V	0.000	462.500	mmho/m	560.000	1.500
Internal:	Zero	Cal		Zero	Cal		m	b
Deep	0.013	0.651	V	0.000	400.000	mmho/m	627.541	-8.365
Medium	0.020	0.754	V	0.000	462.500	mmho/m	630.311	-12.549

Litho Density Calibration Report

Serial: 003N Model: PRB
 Performed Tue Sep 08 14:14:44 2009

Litho Density Calibration

	Background	Magnesium	Aluminum	Sandstone	
Window 1	2042.6	12312.8	4225.8	13758.4	cps
Window 2	1855.8	10134.7	3624.2	11113.1	cps
Window 3	1639.4	6760.2	2716.3	7260.3	cps
Window 4	466.4	469.2	466.1	476.5	cps
Long Space	0.0	8278.9	1768.4	9257.4	cps
Short Space	2.2	2377.3	1544.1	2574.2	cps
Rho		1.7100	2.5900	1.3800	g/cc
Pe			2.5700	1.5500	

Rib Angle : 44.4 Rib Slope : 0.979 Density/Spine Ratio : 0.549
 Spine Angle : 74.4 Spine Slope : 2.577 Spine Intercept : 10.0

Spine Angle : 74.4 Spine Slope : 3.577 Spine Intercept : -18.8

Caliper

Low Ref	Readings	Reference	
High Ref	2.0	8.2	
	4.0	15.0	
	Gain: 3.3		Offset: 1.7

Compensated Neutron Calibration Report

Serial Number: 070808
 Tool Model: Probe

PRE-SURVEY VERIFICATION

Detector	Readings	Measured	Target
Short Space	cps		
Long Space	cps	pu	pu

POST-SURVEY VERIFICATION

Detector	Readings	Measured	Target
Short Space	cps		
Long Space	cps	pu	pu

Gamma Ray Calibration Report

Serial Number:	070559	
Tool Model:	OPEN_GR	
Performed:	Mon Apr 16 22:08:41 2012	
Calibrator Value:	1.0	GAPI
Background Reading:	0.0	cps
Calibrator Reading:	1.0	cps
Sensitivity:	0.3000	GAPI/cps