



SUPERIOR
Hays,
Kansas

**COMPENSATED
DENSITY / NEUTRON
LOG**

Company RAYMOND OIL COMPANY, INC.
Well #1 M & A TRUST
Field WILDCAT
County LANE
State KANSAS

Company RAYMOND OIL COMPANY, INC.
Well #1 M & A TRUST
Field WILDCAT
County LANE State KANSAS

Location: API # : 15-101-22350-0000
850' FNL & 1030' FWL
SEC 27 TWP 20S RGE 29W

Permanent Datum GROUND LEVEL Elevation 2862
Log Measured From KELLY BUSHING 5' A.G.L.
Drilling Measured From KELLY BUSHING

Other Services
DIL/MEL
Elevation
K.B. 2867
D.F. 2865
G.L. 2862

Date	4/29/12		
Run Number	ONE		
Depth Driller	4819		
Depth Logger	4818		
Bottom Logged Interval	4794		
Top Log Interval	3400		
Casing Driller	8 5/8"@261'		
Casing Logger	261		
Bit Size	7 7/8"		
Type Fluid in Hole	CHEMICAL MUD	CHLORIDES 2,300 PPM	
Density / Viscosity	9.3/55		
pH / Fluid Loss	10.5/8.0		
Source of Sample	FLOWLINE		
Rm @ Meas. Temp	1.50@60F		
Rmt @ Meas. Temp	1.13@60F		
Rmc @ Meas. Temp	1.80@60F		
Source of Rmf / Rmc	MEASUREMENT		
Rm @ BHT	.732@123F		
Time Circulation Stopped	2.5 HOURS		
Time Logger on Bottom	11:30 P.M.		
Maximum Recorded Temperature	123F		
Equipment Number	4010		
Location	HAYS, KANSAS		
Recorded By	JEFF LUEBBERS		
Witnessed By	KIM SHOEMAKER		

<<< Fold Here >>>

All interpretations are opinions based on inferences from electrical or other measurements and we cannot and do not guarantee the accuracy or correctness of any interpretation, and we shall not, except in the case of gross or willful negligence on our part, be liable or responsible for any loss, costs, damages, or expenses incurred or sustained by anyone resulting from any interpretation made by any of our officers, agents or employees. These interpretations are also subject to our general terms and conditions set out in our current Price Schedule.

Comments

THANK YOU FOR USING SUPERIOR WELL SERVICE HAYS, KANSAS (785) 628-6395
DIRECTIONS
DIGHTON, KS. 13S. ON HWY 23 TO "RD. 20", 3W., S. INTO

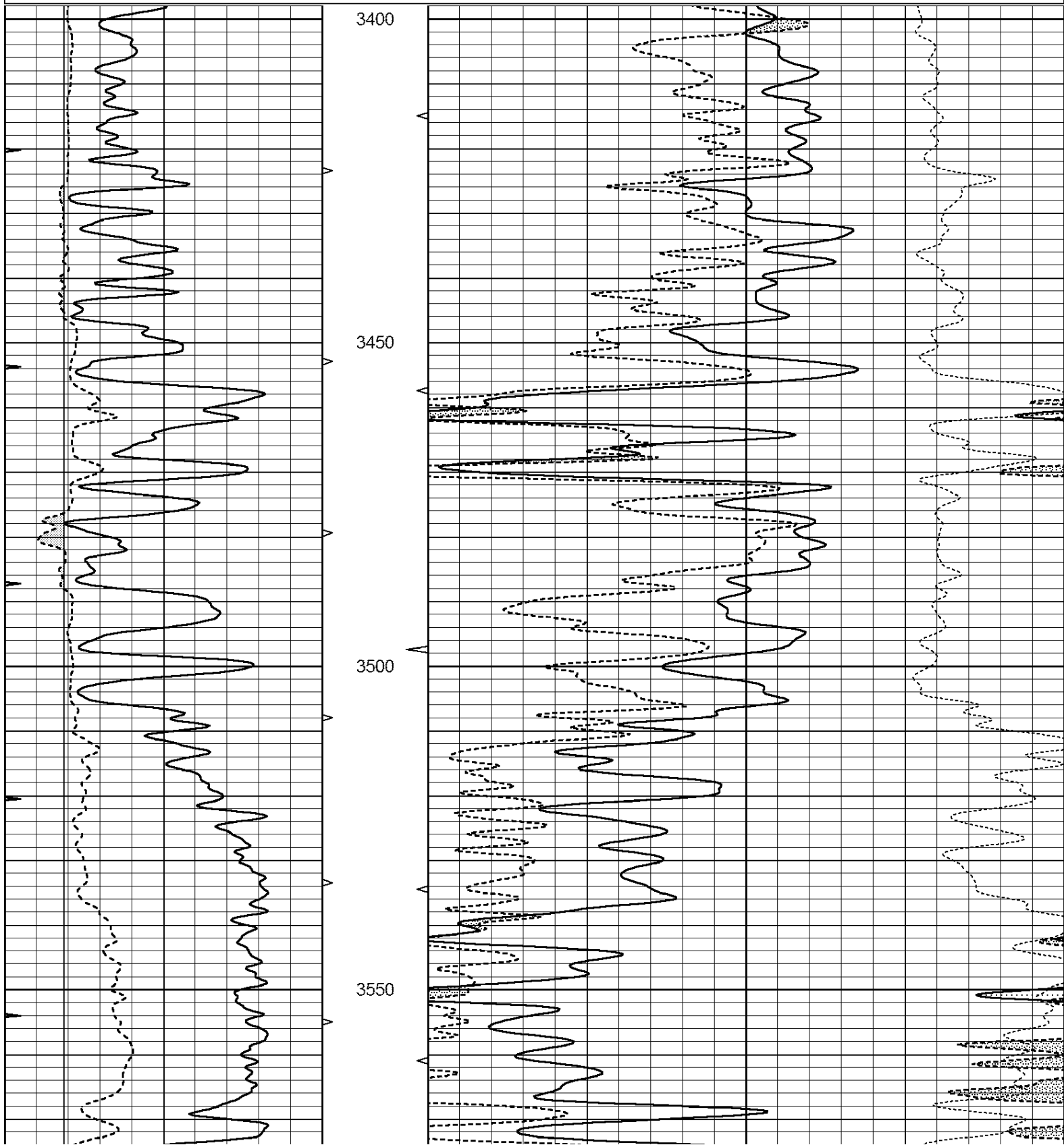


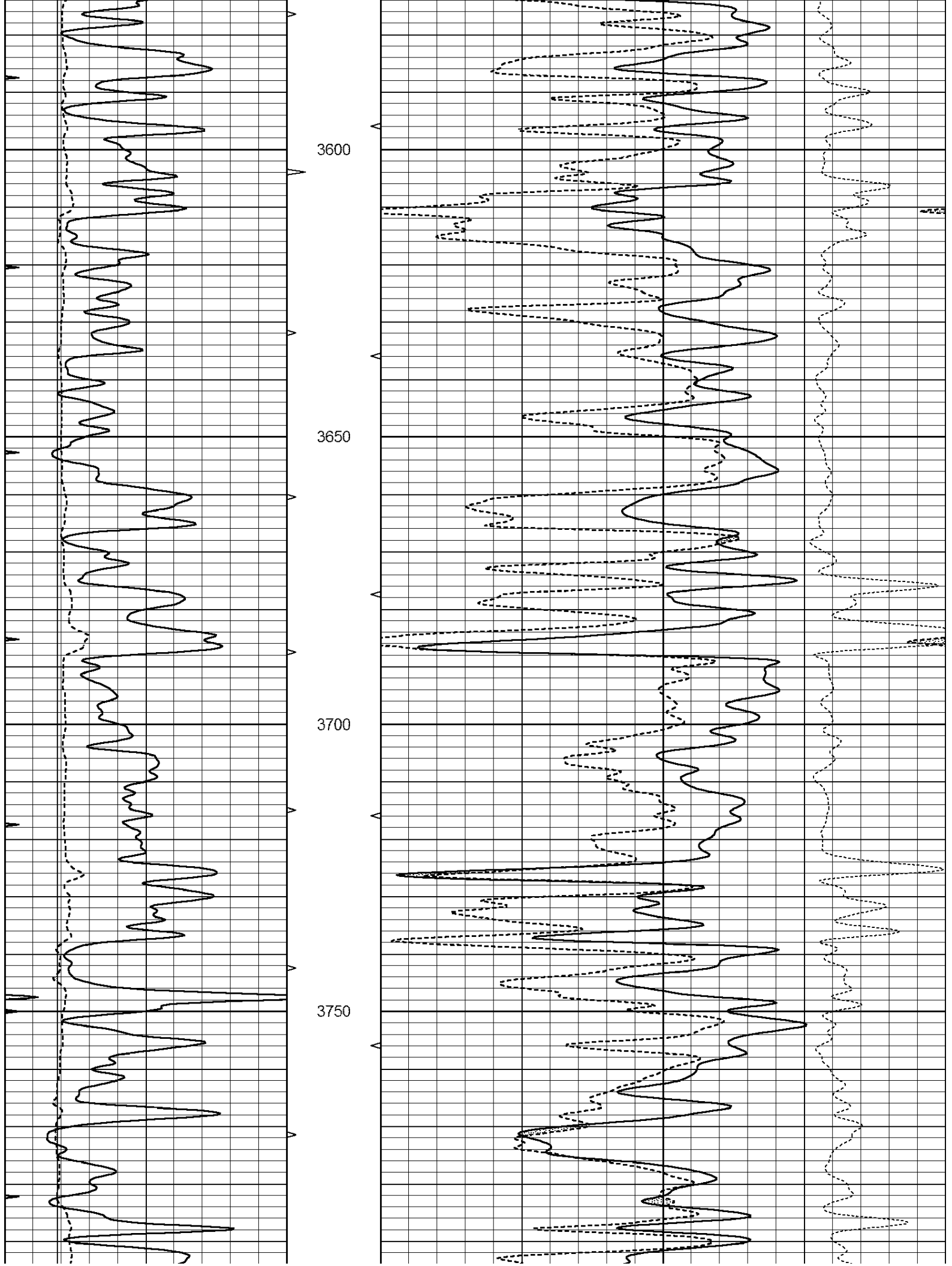
SUPERIOR
Hays,
Kansas

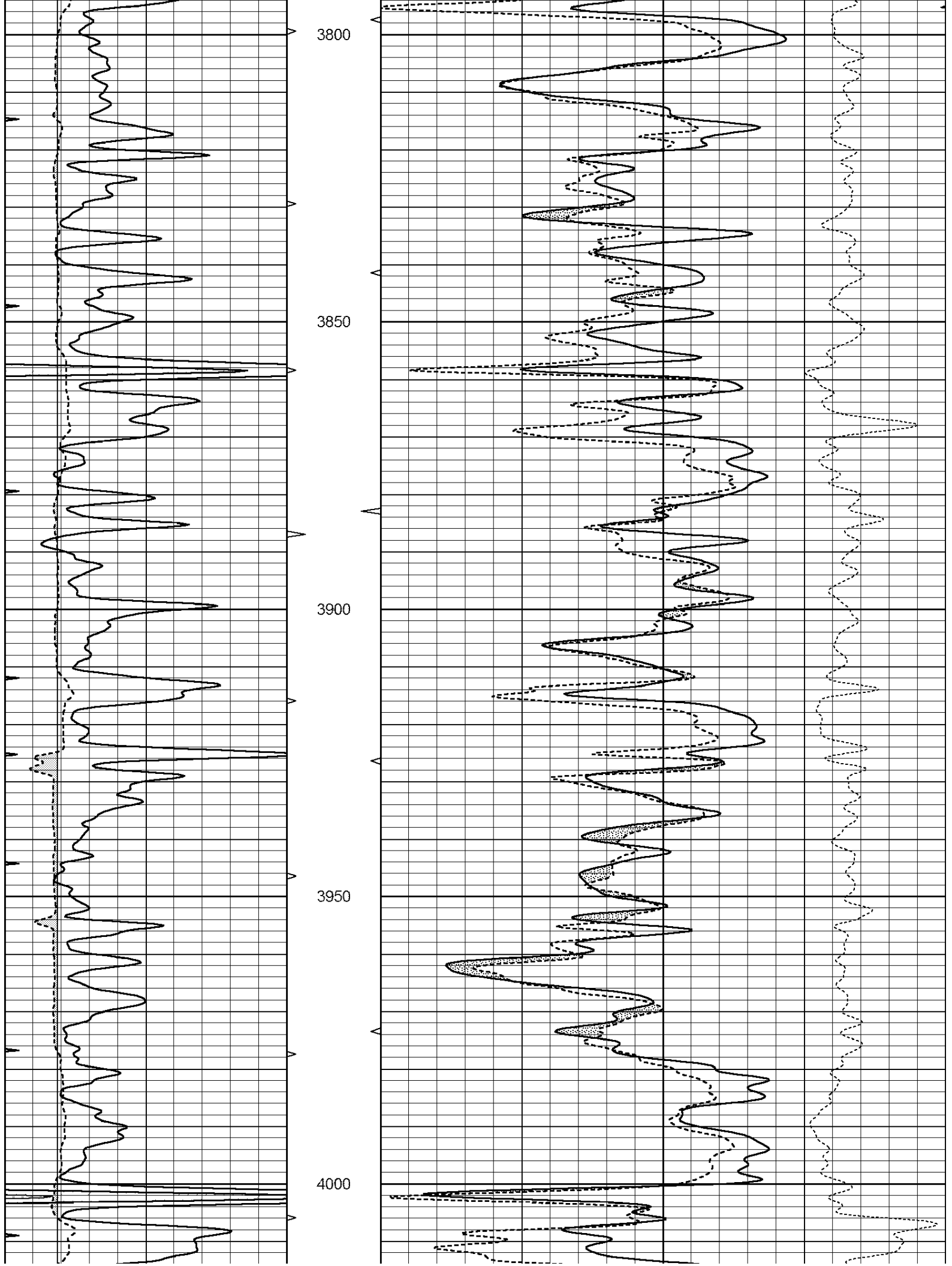
MAIN SECTION

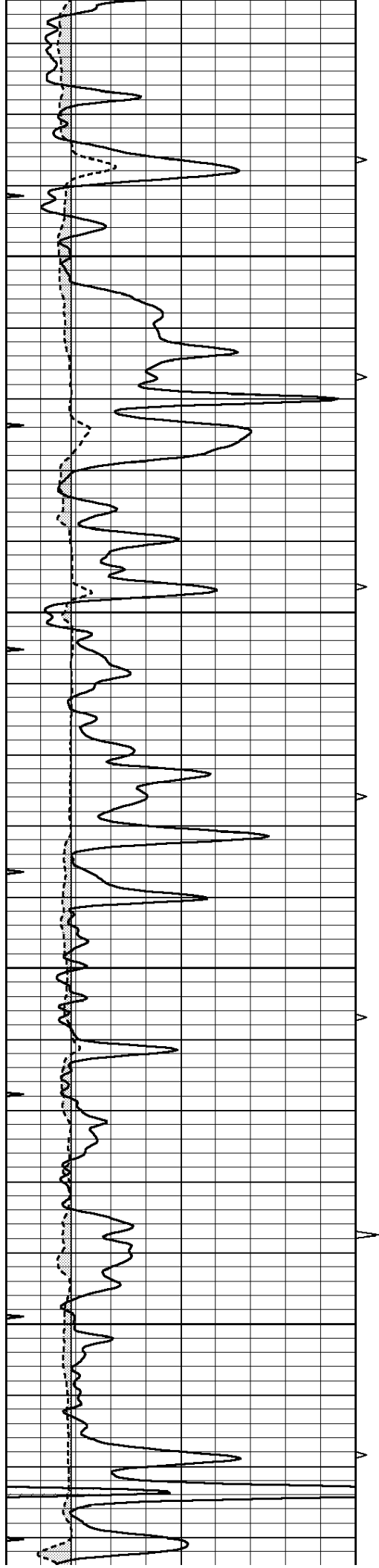
Database File: 408758ddn.db
 Dataset Pathname: pass3.7
 Presentation Format: den_neu
 Dataset Creation: Mon Apr 30 01:24:57 2012 by Calc Open-Cased 110302
 Charted by: Depth in Feet scaled 1:240

0	GAMMA RAY (GAPI)	150	ABHV	30	COMPENSATED DENSITY (pu)	-10
6	CALIPER (in)	16	10 (ft3)	0 30	COMPENSATED NEUTRON (pu)	-10
0	MINMK	20	TBHV		-0.25 CORRECTION (g/cc)	0.25
			0 (ft3)	10		







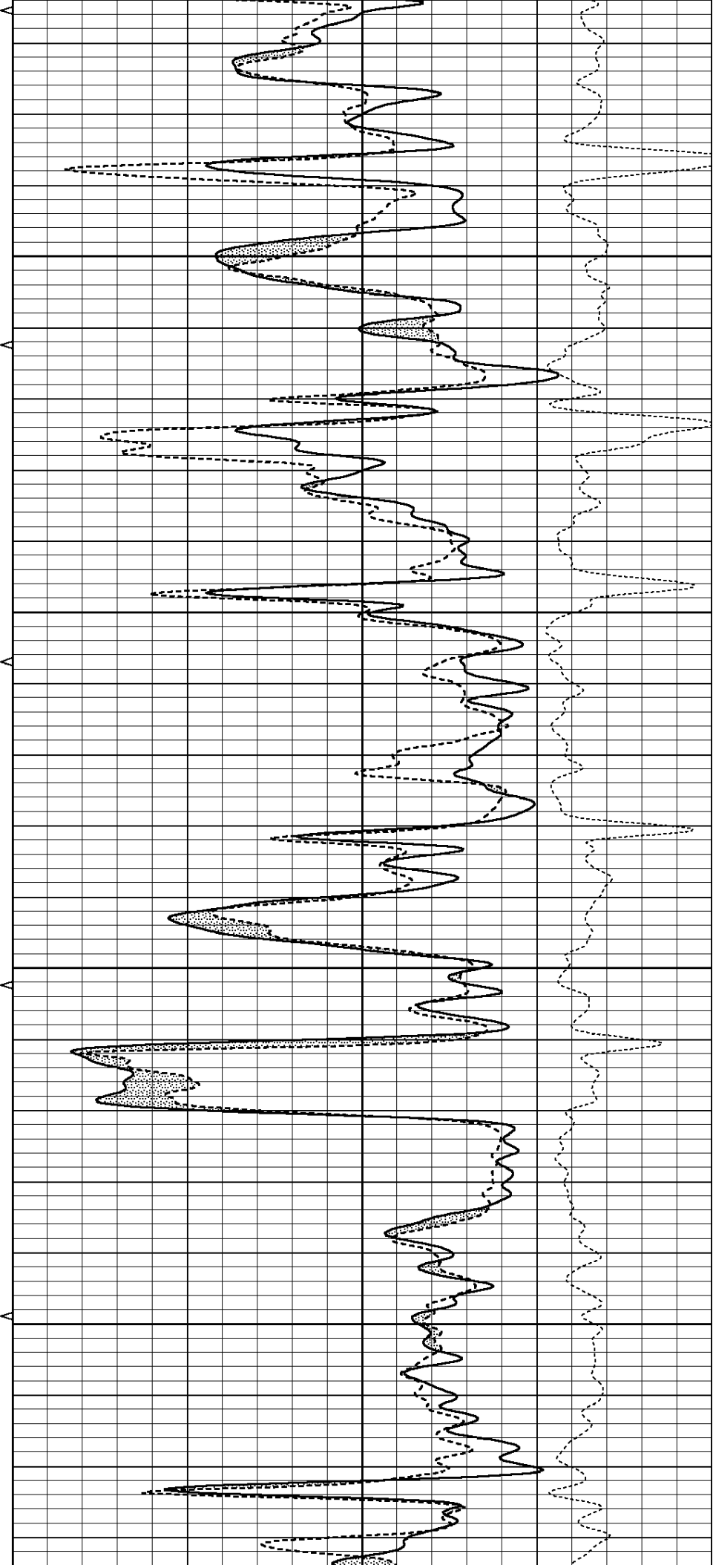


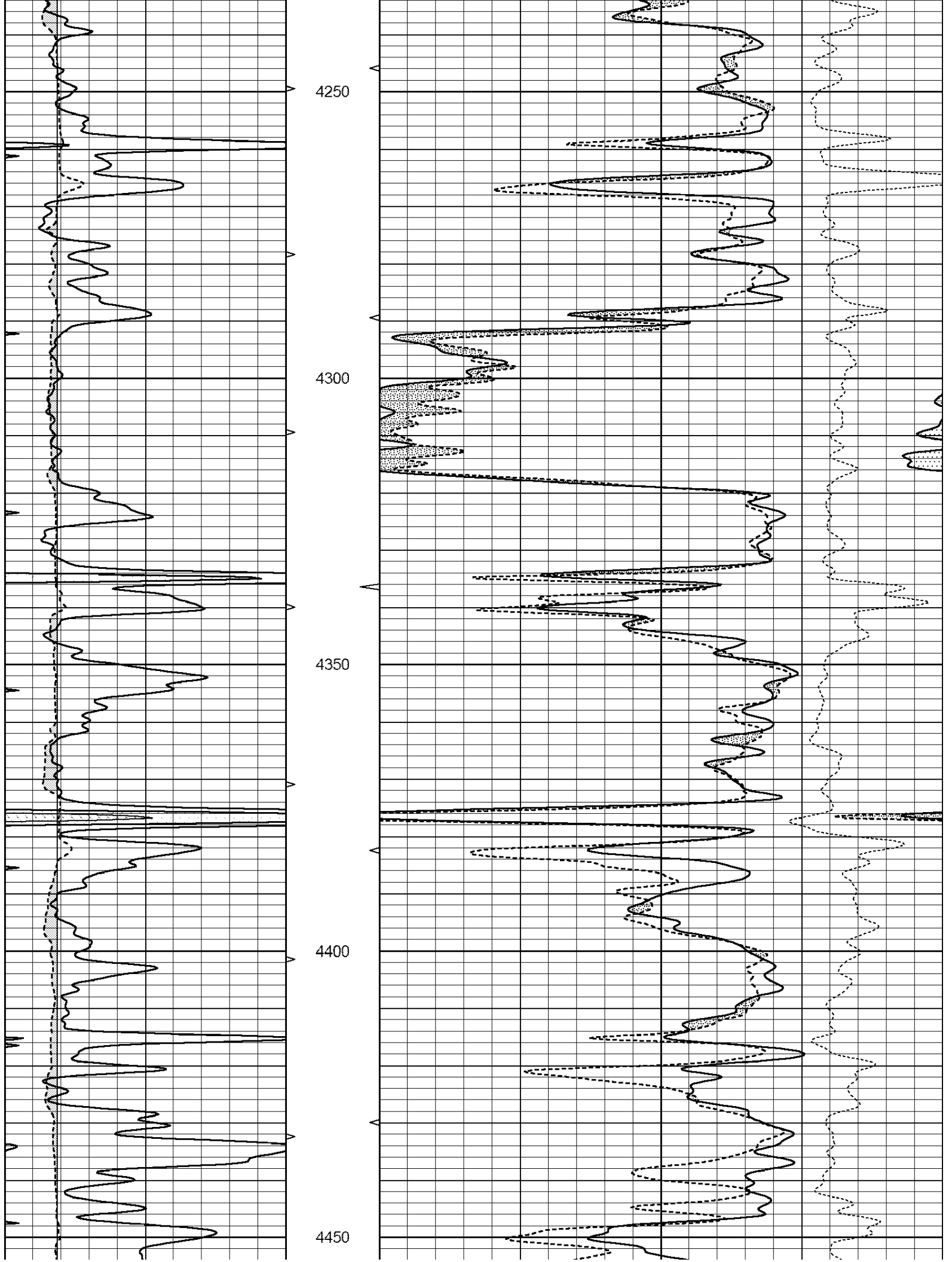
4050

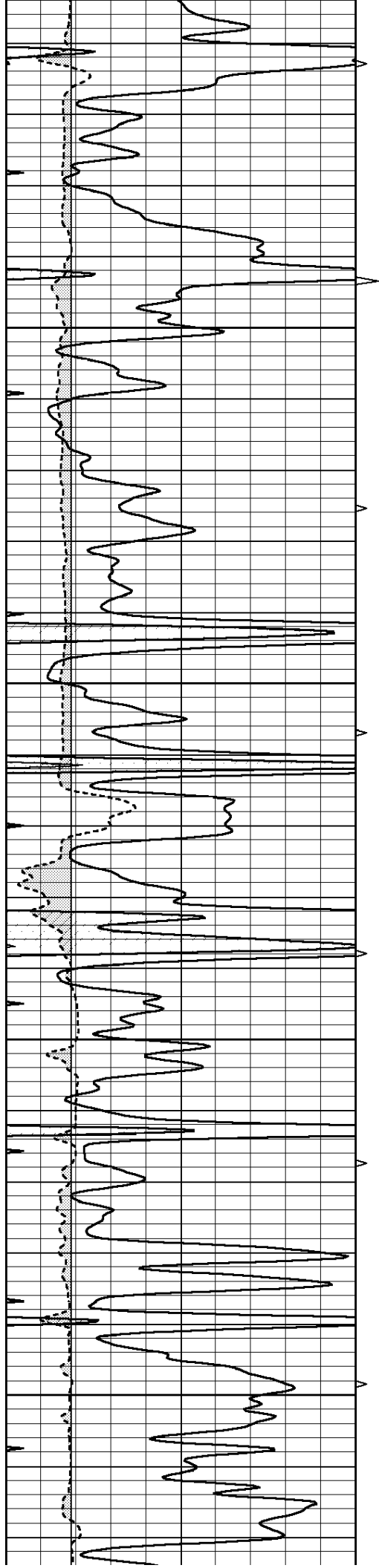
4100

4150

4200





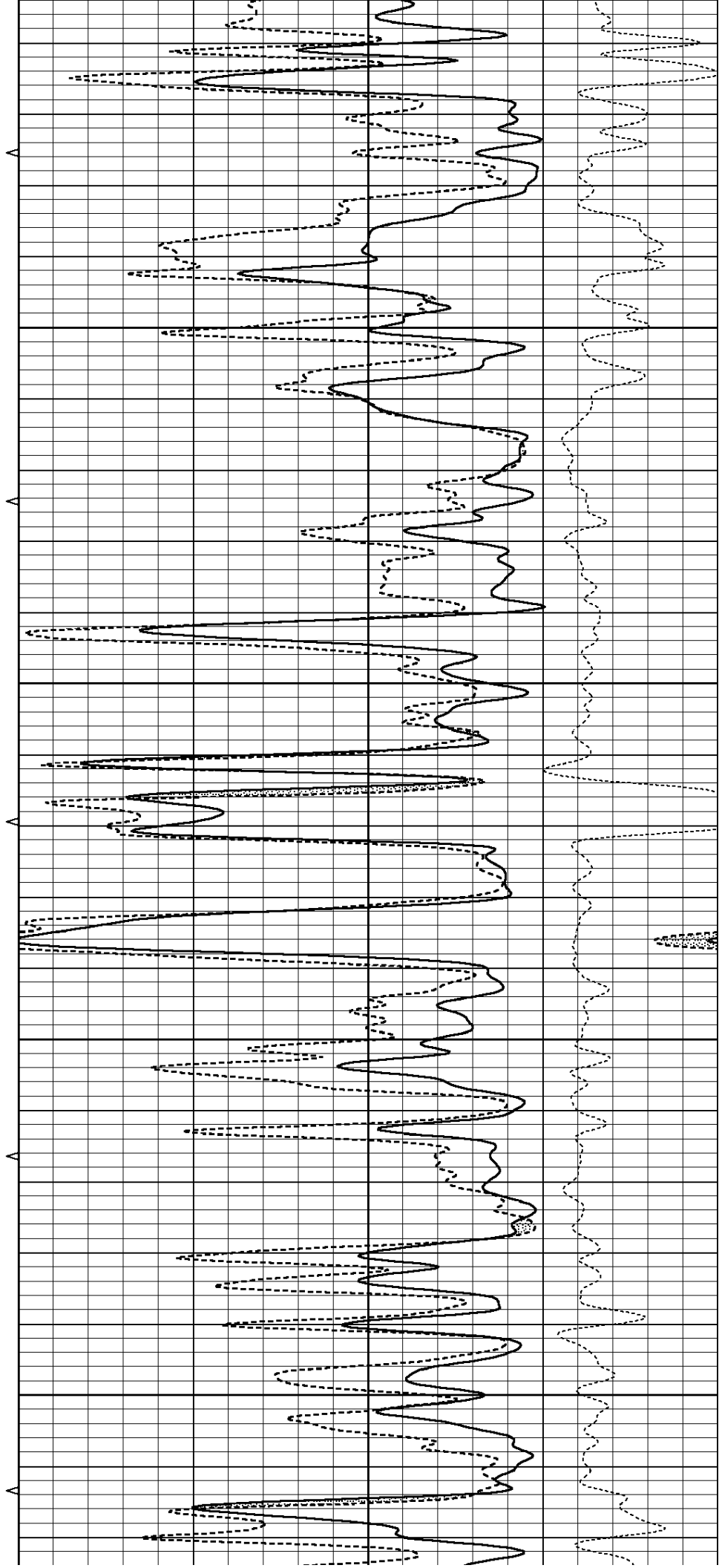


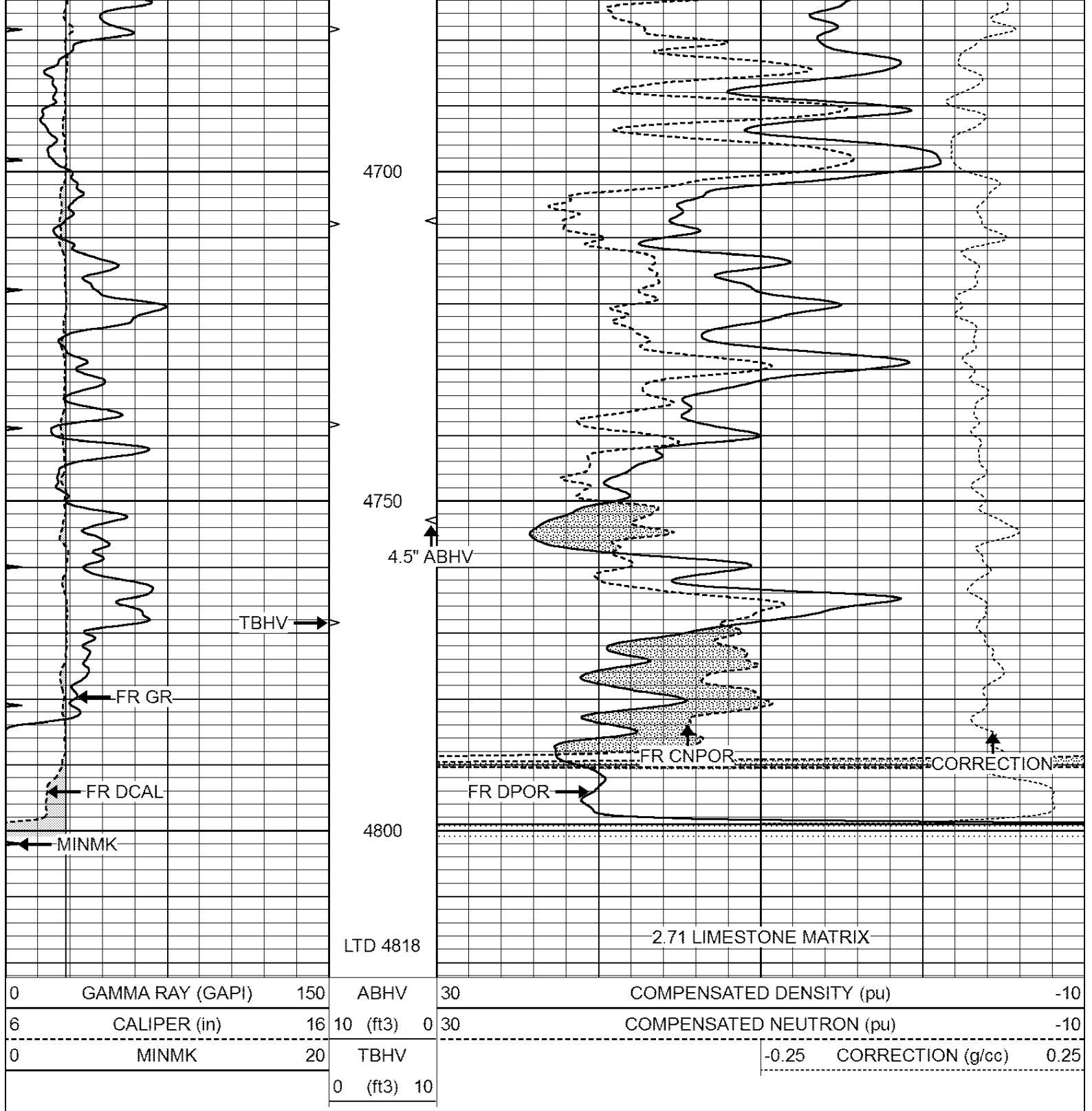
4500

4550

4600

4650





0	GAMMA RAY (GAPI)	150	ABHV	30	COMPENSATED DENSITY (pu)	-10
6	CALIPER (in)	16	10 (ft3)	0 30	COMPENSATED NEUTRON (pu)	-10
0	MINMK	20	TBHV		-0.25 CORRECTION (g/cc)	0.25
			0 (ft3)	10		



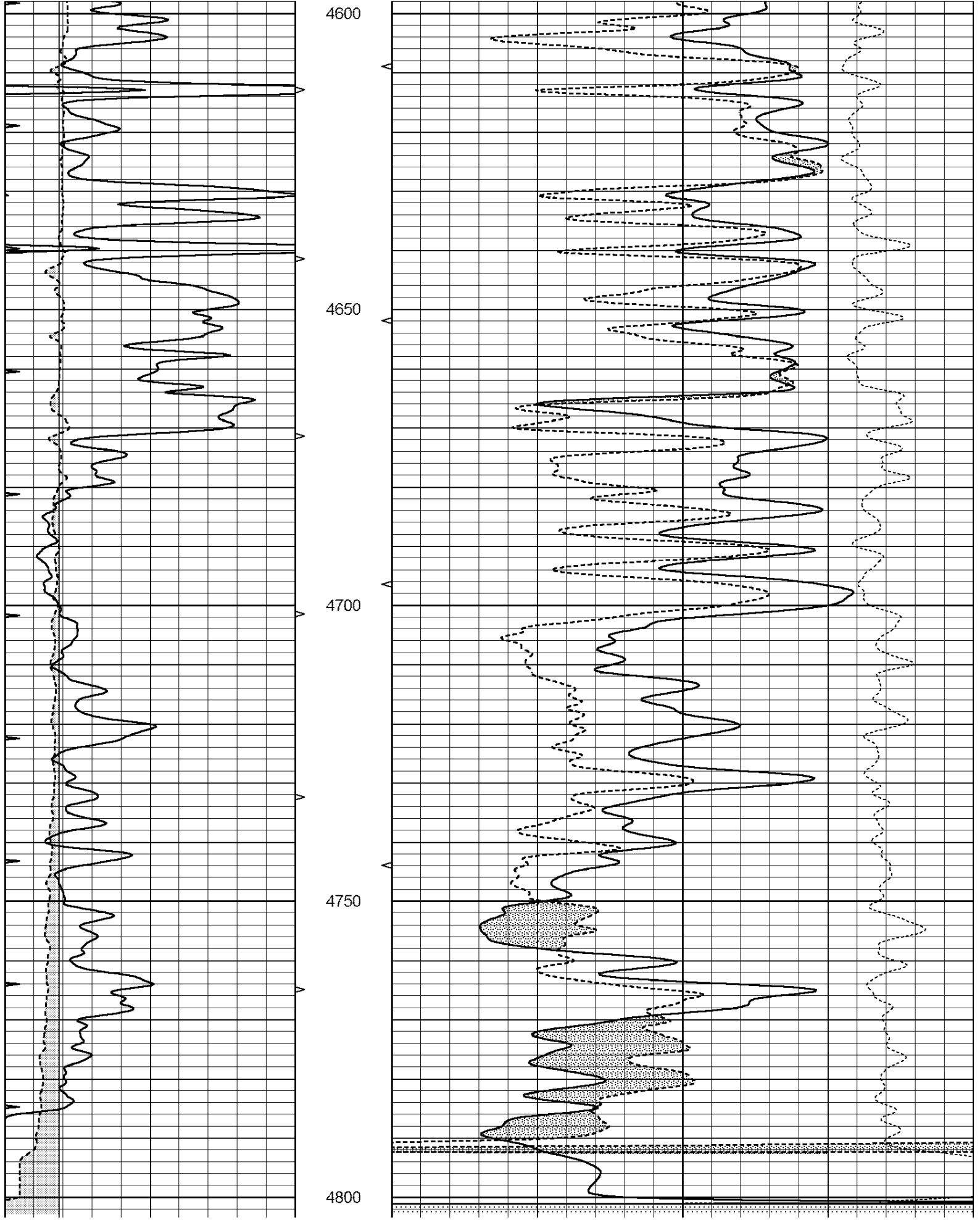
SUPERIOR
Hays,
Kansas

REPEAT SECTION

Database File: 408758ddn.db
 Dataset Pathname: pass2.3
 Presentation Format: den_neu
 Dataset Creation: Mon Apr 30 01:03:15 2012 by Calc Open-Cased 110302
 Charted by: Depth in Feet scaled 1:240

0	GAMMA RAY (GAPI)	150	ABHV	30	COMPENSATED DENSITY (pu)	-10
---	------------------	-----	------	----	--------------------------	-----

6	CALIPER (in)	16	10 (ft3)	0 30	COMPENSATED NEUTRON (pu)	-10	
0	MINMK	20	TBHV		-0.25	CORRECTION (g/cc)	0.25
			0 (ft3)	10			



0	GAMMA RAY (GAPI)	150	ABHV	30	COMPENSATED DENSITY (pu)				-10
6	CALIPER (in)	16	10 (ft3)	0 30	COMPENSATED NEUTRON (pu)				-10
0	MINMK	20	TBHV		-0.25	CORRECTION (g/cc)		0.25	
			0 (ft3)	10					

Calibration Report

Database File: 408758ddn.db
 Dataset Pathname: pass3.7
 Dataset Creation: Mon Apr 30 01:24:57 2012 by Calc Open-Cased 110302

Dual Induction Calibration Report

Serial-Model: DIL4-GEAR
 Performed: Fri Apr 27 01:14:54 2012

Loop:	Readings				References			Results	
	Air	Loop			Air	Loop		m	b
Deep	0.008	0.666	V	0.000	400.000	mmho/m	570.000	-1.000	
Medium	-0.003	0.769	V	0.000	462.500	mmho/m	560.000	1.500	
Internal:	Zero	Cal		Zero	Cal		m	b	
Deep	0.013	0.651	V	0.000	400.000	mmho/m	627.541	-8.365	
Medium	0.020	0.754	V	0.000	462.500	mmho/m	630.311	-12.549	

Litho Density Calibration Report

Serial: 003N Model: PRB
 Performed Tue Sep 08 14:14:44 2009

Litho Density Calibration

	Background	Magnesium	Aluminum	Sandstone	
Window 1	2042.6	12312.8	4225.8	13758.4	cps
Window 2	1855.8	10134.7	3624.2	11113.1	cps
Window 3	1639.4	6760.2	2716.3	7260.3	cps
Window 4	466.4	469.2	466.1	476.5	cps
Long Space	0.0	8278.9	1768.4	9257.4	cps
Short Space	2.2	2377.3	1544.1	2574.2	cps
Rho		1.7100	2.5900	1.3800	g/cc
Pe			2.5700	1.5500	
Rib Angle	: 44.4	Rib Slope	: 0.979	Density/Spine Ratio	: 0.549
Spine Angle	: 74.4	Spine Slope	: 3.577	Spine Intercept	: -18.8

Caliper

	Readings	Reference	
Low Ref	2.0	8.2	
High Ref	4.0	15.0	
Gain:	3.3	Offset:	1.7

Compensated Neutron Calibration Report

Serial Number: 070808
 Tool Model: Probe

PRE-SURVEY VERIFICATION

Detector	Readings	Measured	Target
Short Space	cps		
Long Space	cps	pu	pu

POST-SURVEY VERIFICATION

Detector	Readings	Measured	Target
Short Space	cps		
Long Space	cps	pu	pu

Gamma Ray Calibration Report

Serial Number:	070559	
Tool Model:	OPEN_GR	
Performed:	Mon Apr 16 22:08:41 2012	
Calibrator Value:	1.0	GAPI
Background Reading:	0.0	cps
Calibrator Reading:	1.0	cps
Sensitivity:	0.3000	GAPI/cps