



**SUPERIOR**  
Hays,  
Kansas

**MICRO**  
LOG

Company RAYMOND OIL COMPANY, INC.  
Well #1 M & A TRUST  
Field WILDCAT  
County LANE  
State KANSAS

Company RAYMOND OIL COMPANY, INC.  
Well #1 M & A TRUST  
Field WILDCAT  
County LANE State KANSAS

Location: API #: 15-101-22350-0000  
850' FNL & 1030' FWL

SEC 27 TWP 20S RGE 29W

Permanent Datum GROUND LEVEL Elevation 2862  
Log Measured From KELLY BUSHING 5' A.G.L.  
Drilling Measured From KELLY BUSHING

Other Services  
CDL/CNL  
DIL

Elevation  
K.B. 2867  
D.F. 2865  
G.L. 2862

Date	4/29/12
Run Number	TWO
Depth Driller	4819
Depth Logger	4818
Bottom Logged Interval	4816
Top Log Interval	3400
Casing Driller	8 5/8"@261'
Casing Logger	261
Bit Size	7 7/8"
Type Fluid in Hole	CHEMICAL MUD
Density / Viscosity	9.3/55
pH / Fluid Loss	10.5/8.0
Source of Sample	FLOWLINE
Rm @ Meas. Temp	1.50@60F
Rmt @ Meas. Temp	1.13@60F
Rmc @ Meas. Temp	1.80@60F
Source of Rmf / Rmc	MEASUREMENT
Rm @ BHT	.732@123F
Time Circulation Stopped	4.5 HOURS
Time Logger on Bottom	11:30 P.M.
Maximum Recorded Temperature	123F
Equipment Number	4010
Location	HAYS, KANSAS
Recorded By	JEFF LUEBBERS
Witnessed By	KIM SHOEMAKER

<<< Fold Here >>>

All interpretations are opinions based on inferences from electrical or other measurements and we cannot and do not guarantee the accuracy or correctness of any interpretation, and we shall not, except in the case of gross or willful negligence on our part, be liable or responsible for any loss, costs, damages, or expenses incurred or sustained by anyone resulting from any interpretation made by any of our officers, agents or employees. These interpretations are also subject to our general terms and conditions set out in our current Price Schedule.

**Comments**

THANK YOU FOR USING SUPERIOR WELL SERVICE HAYS, KANSAS (785) 628-6395  
DIRECTIONS  
DIGHTON, KS. 13S. ON HWY 23 TO "RD. 20", 3W., S. INTO

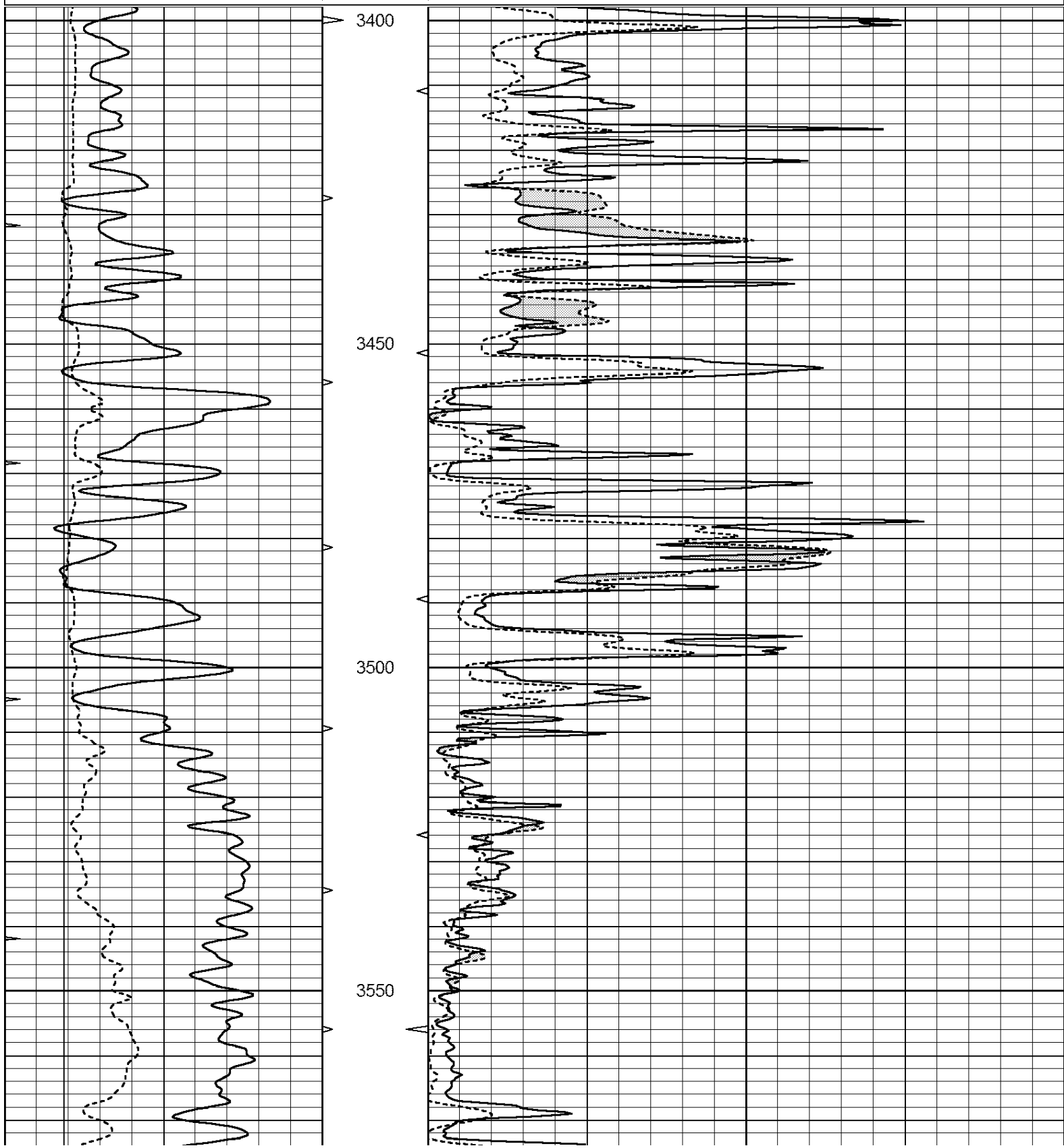


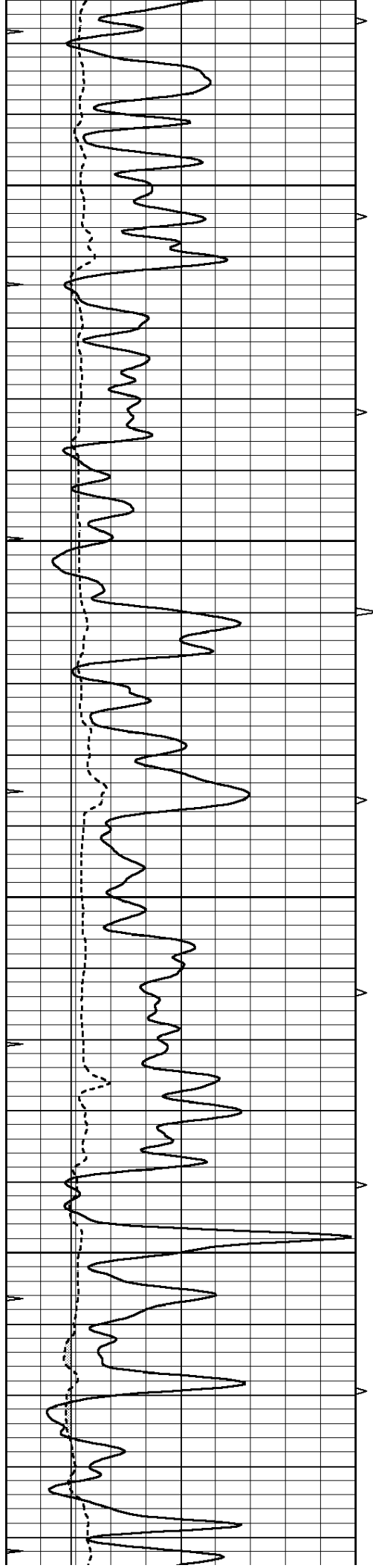
**SUPERIOR**  
Hays,  
Kansas

**MAIN SECTION**

Database File: 408758ddn.db  
 Dataset Pathname: pass6.4  
 Presentation Format: micro  
 Dataset Creation: Mon Apr 30 03:18:00 2012 by Calc Open-Cased 110302  
 Charted by: Depth in Feet scaled 1:240

0	GAMMA RAY (GAPI)	150	ABHV	0	MEL1.5 (Ohm-m)	40
6	CALIPER (in)	16	10 (ft3)	0	MEL2.0 (Ohm-m)	40
0	MINMK	20	TBHV			
			0 (ft3)	10		



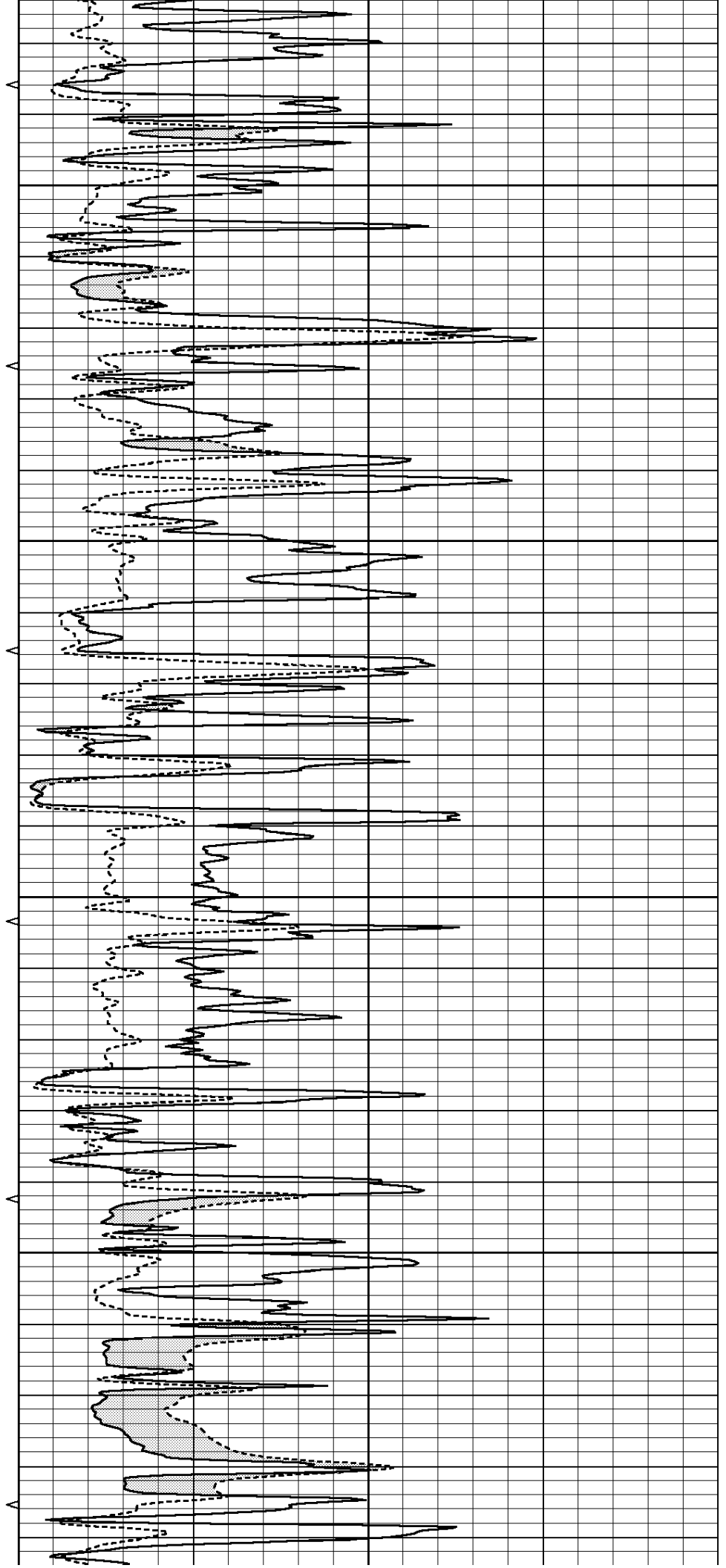


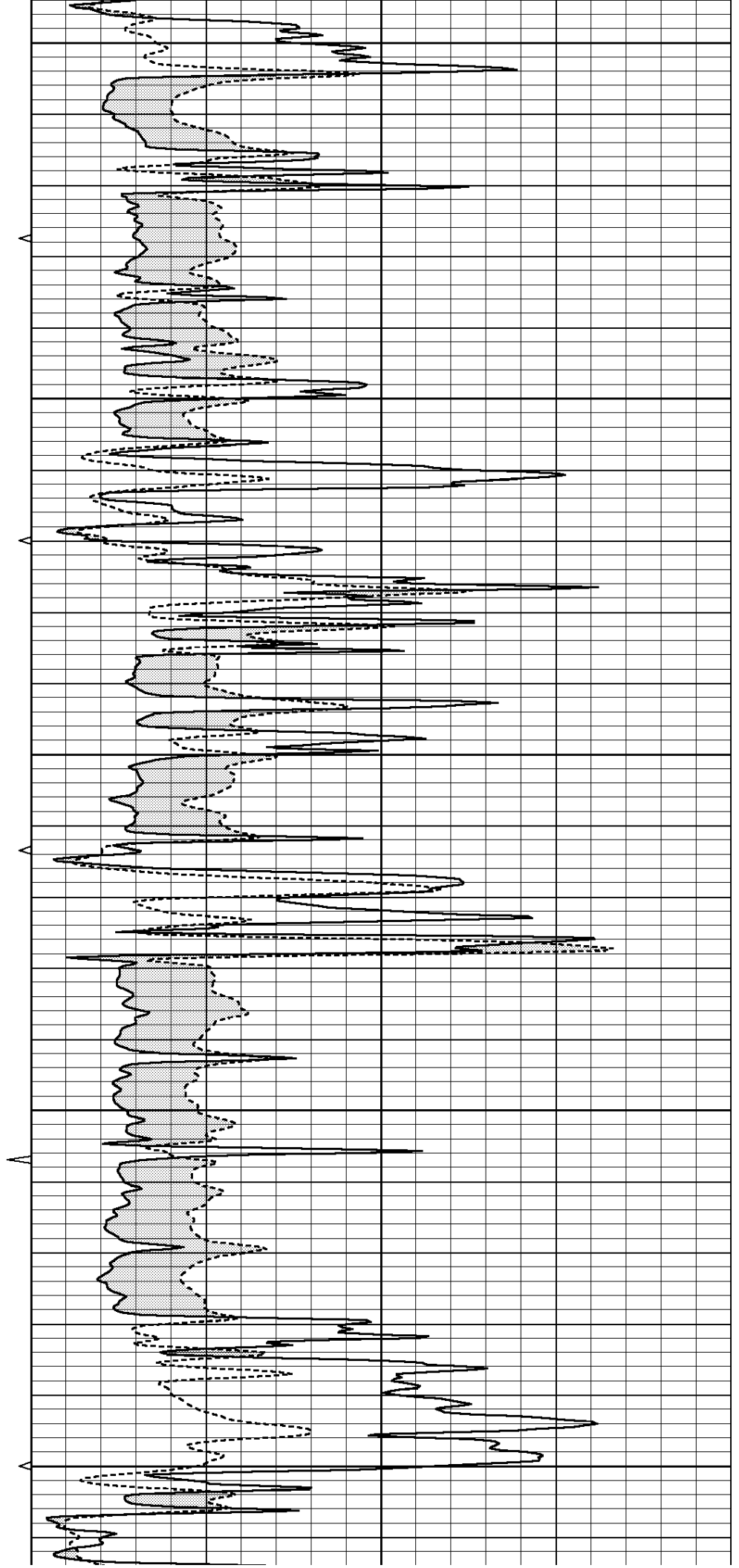
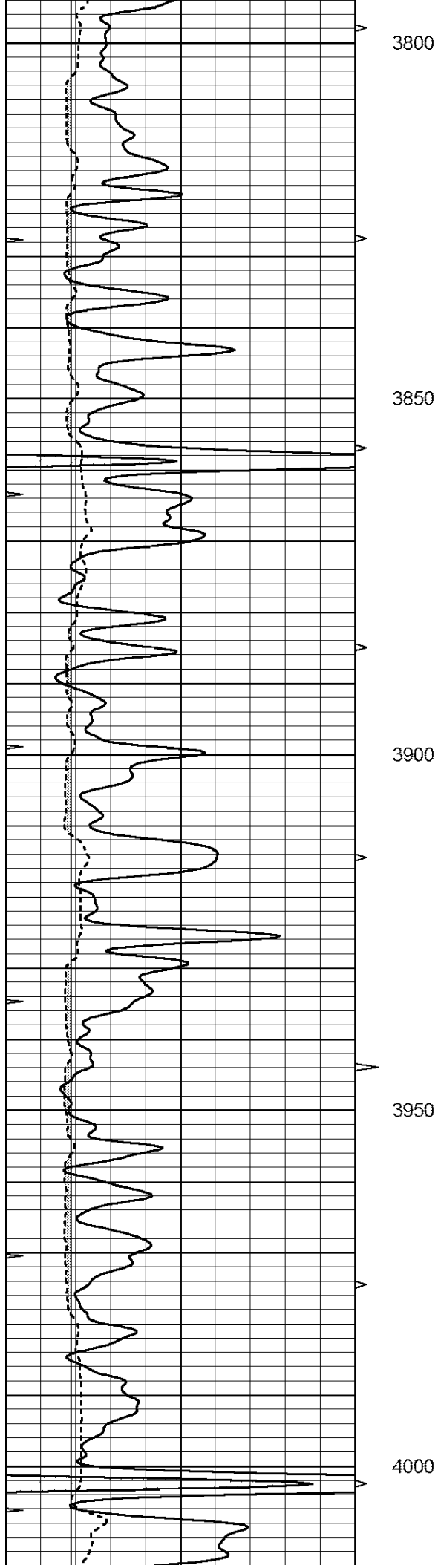
3600

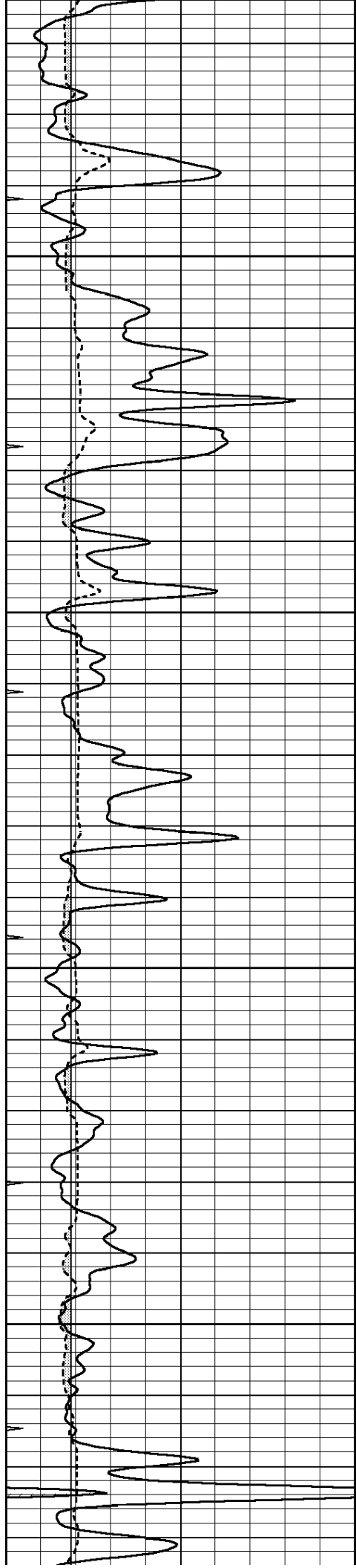
3650

3700

3750





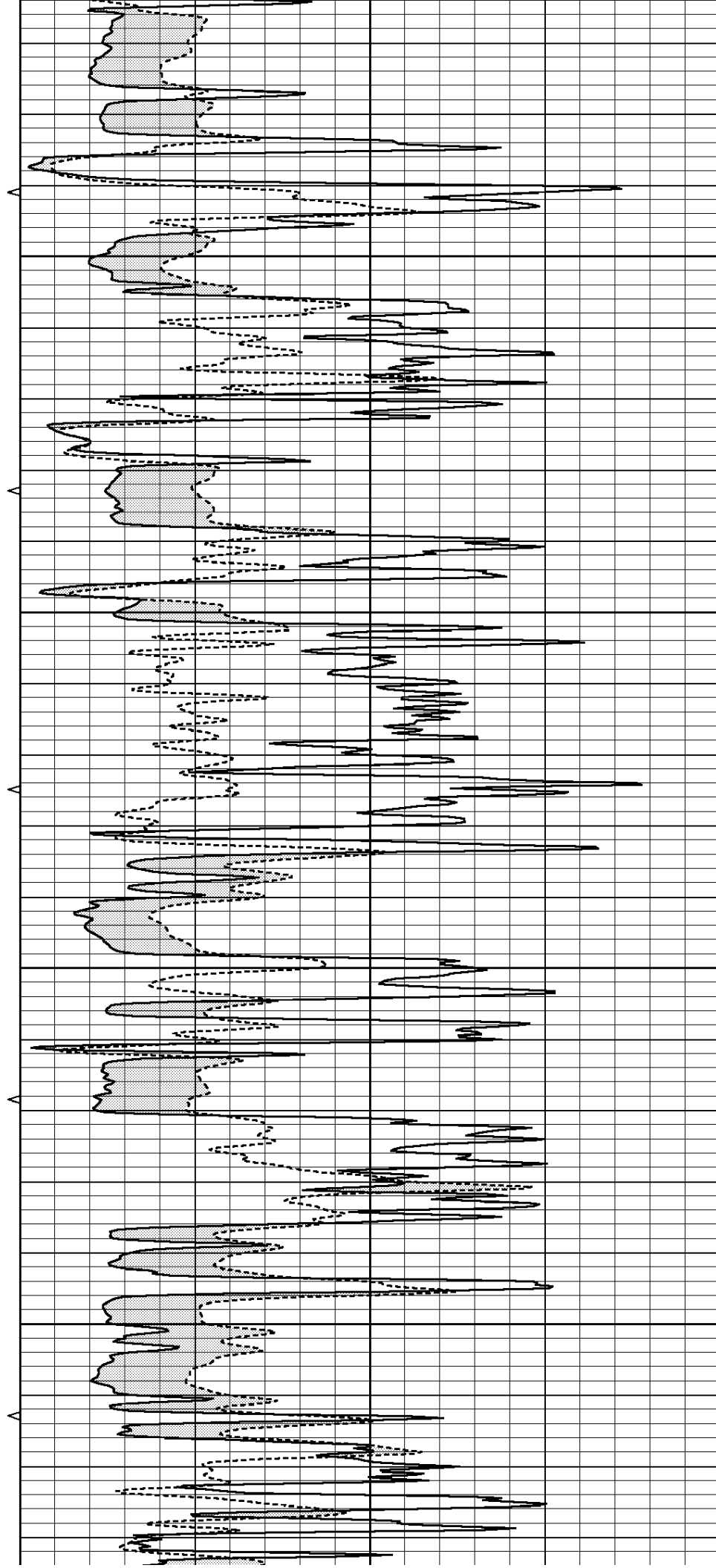


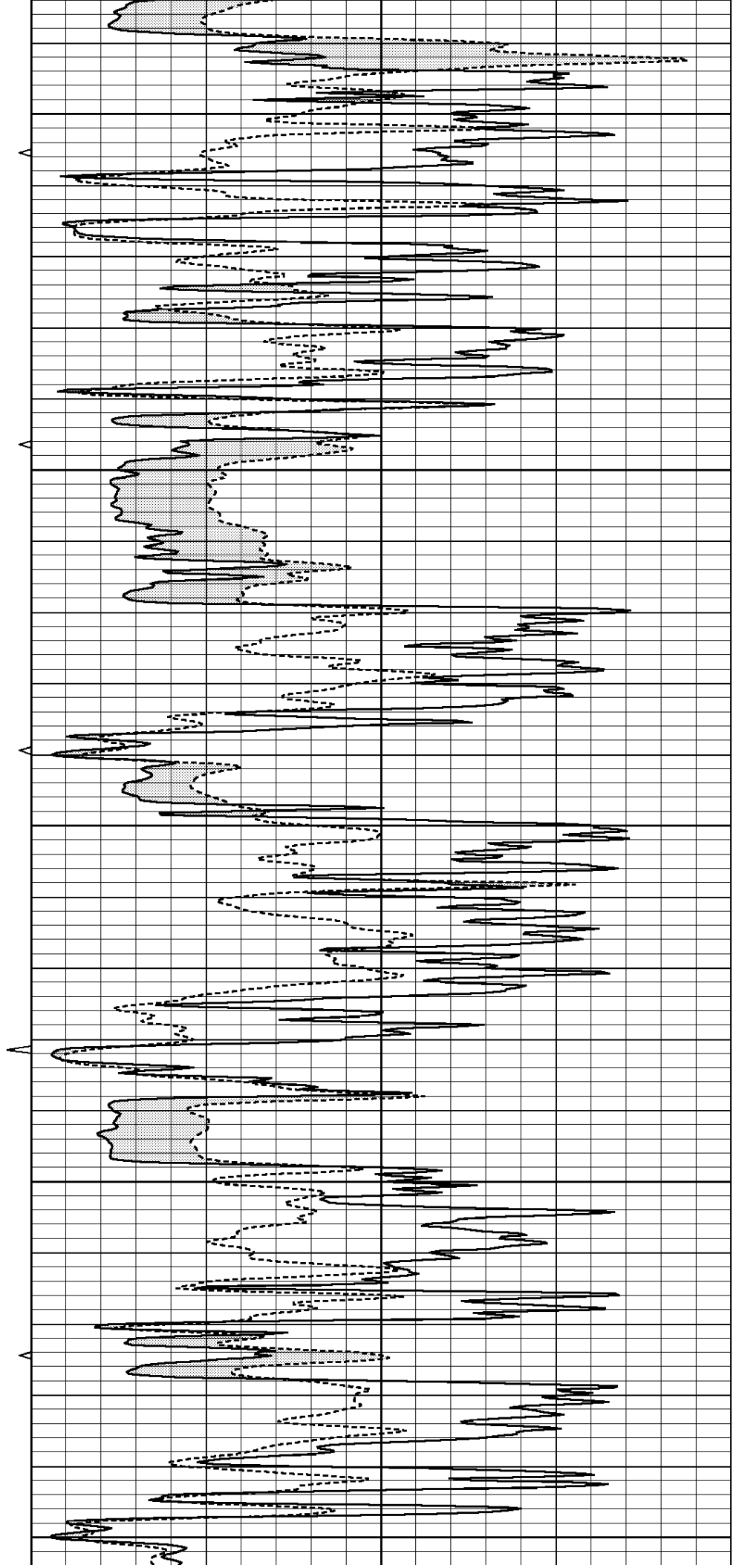
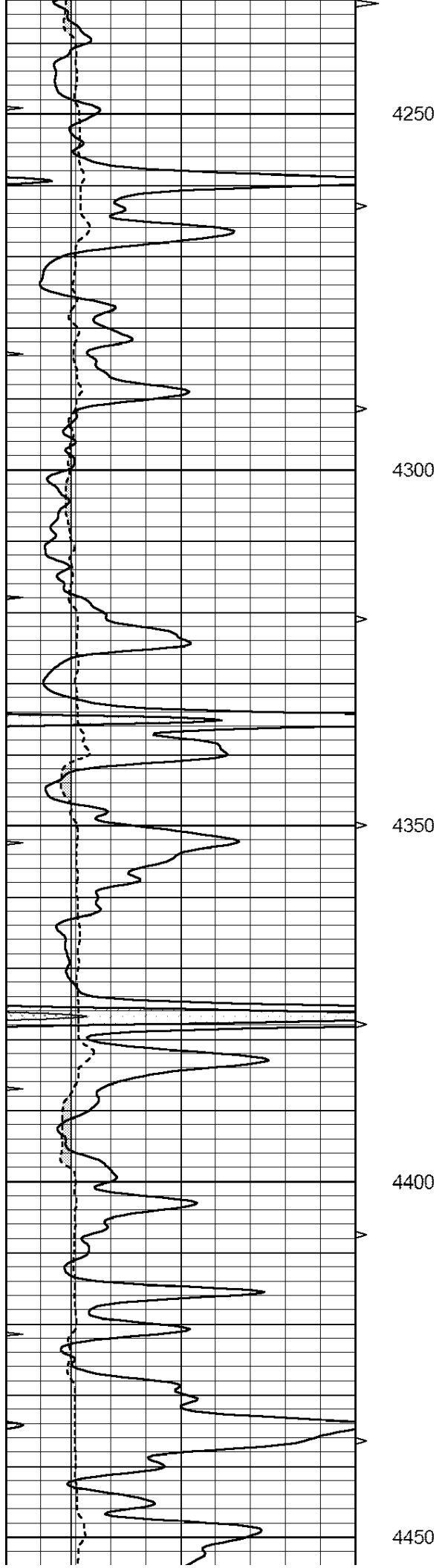
4050

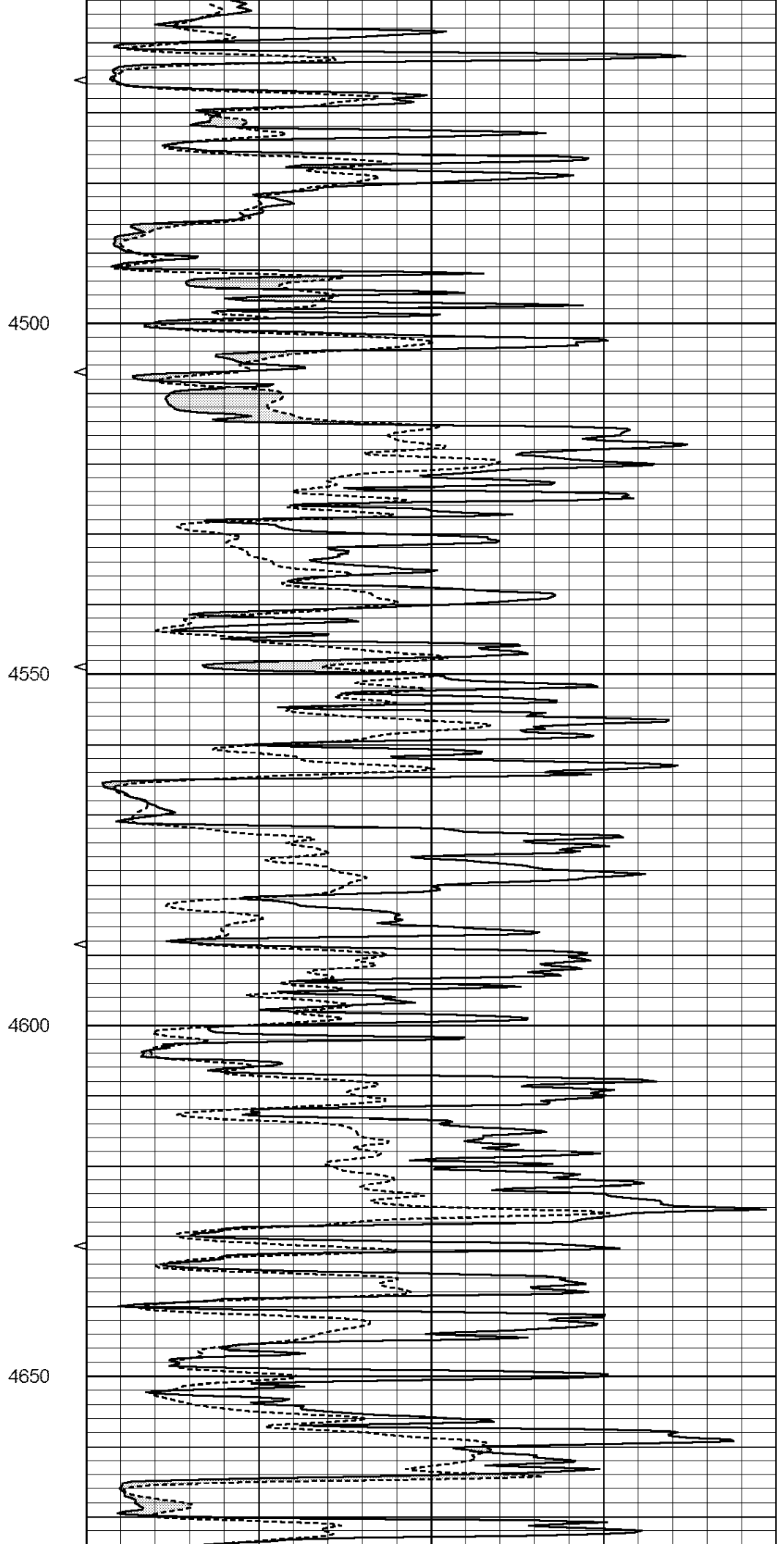
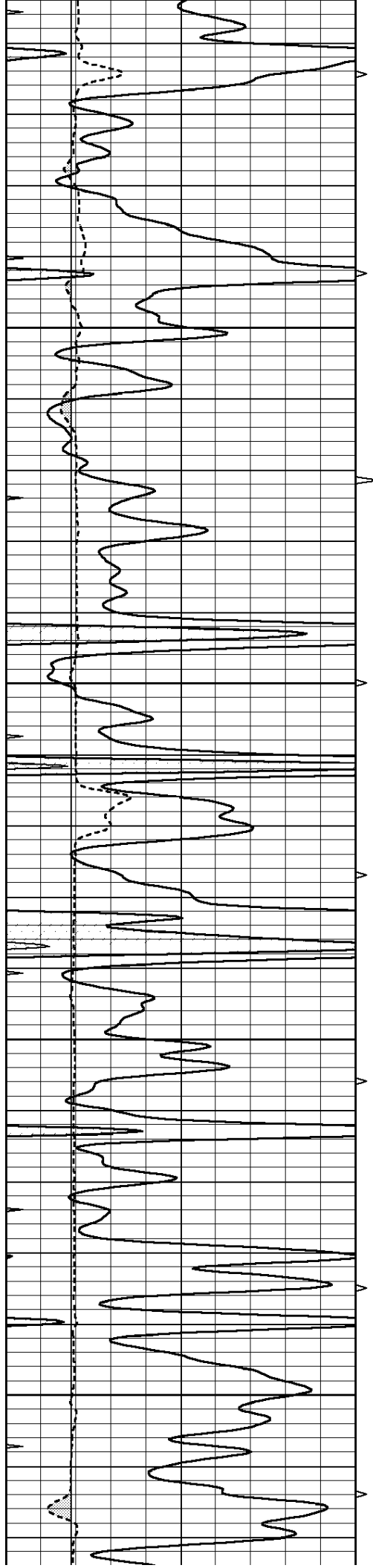
4100

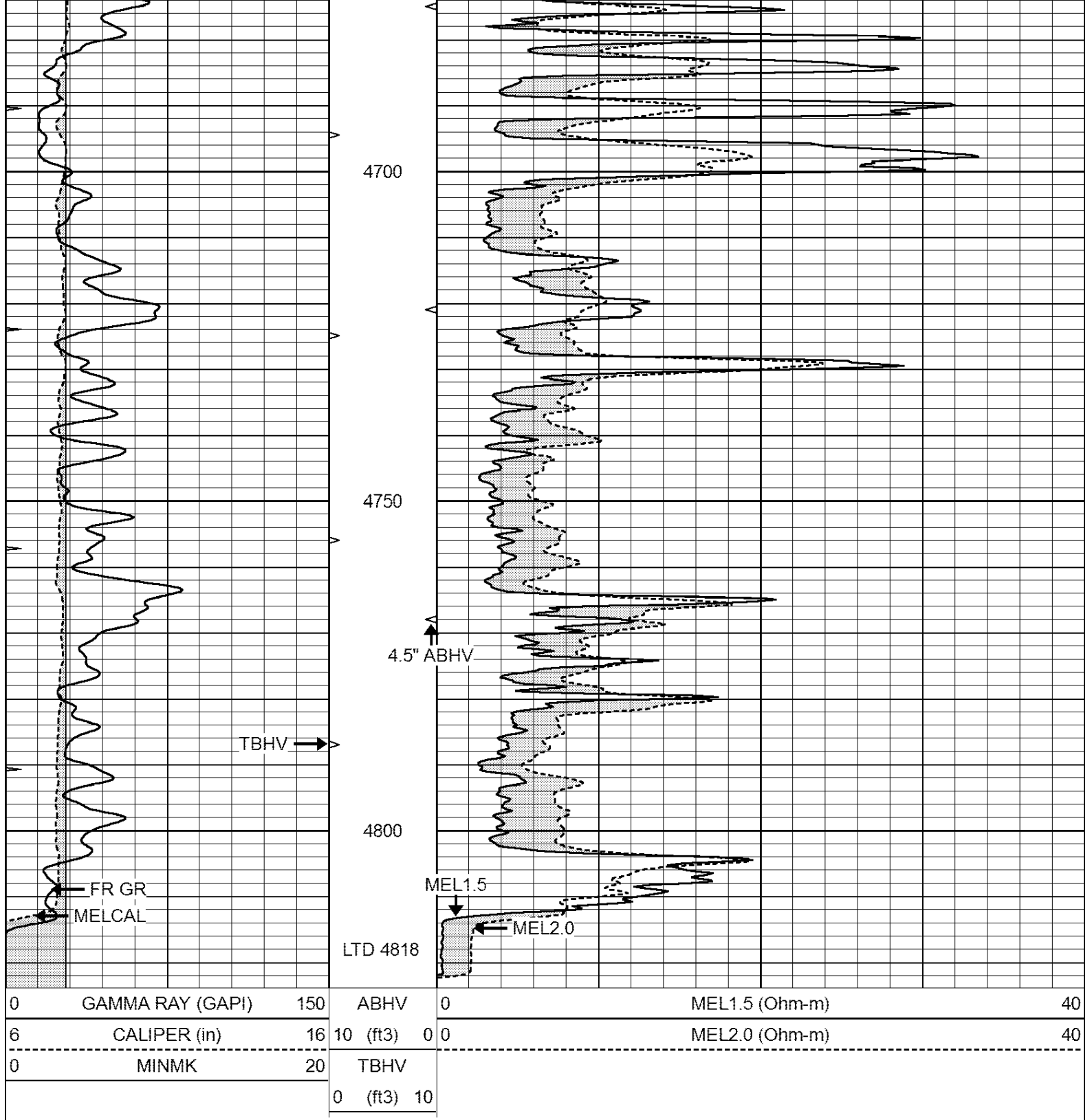
4150

4200









SUPERIOR  
Hays,  
Kansas

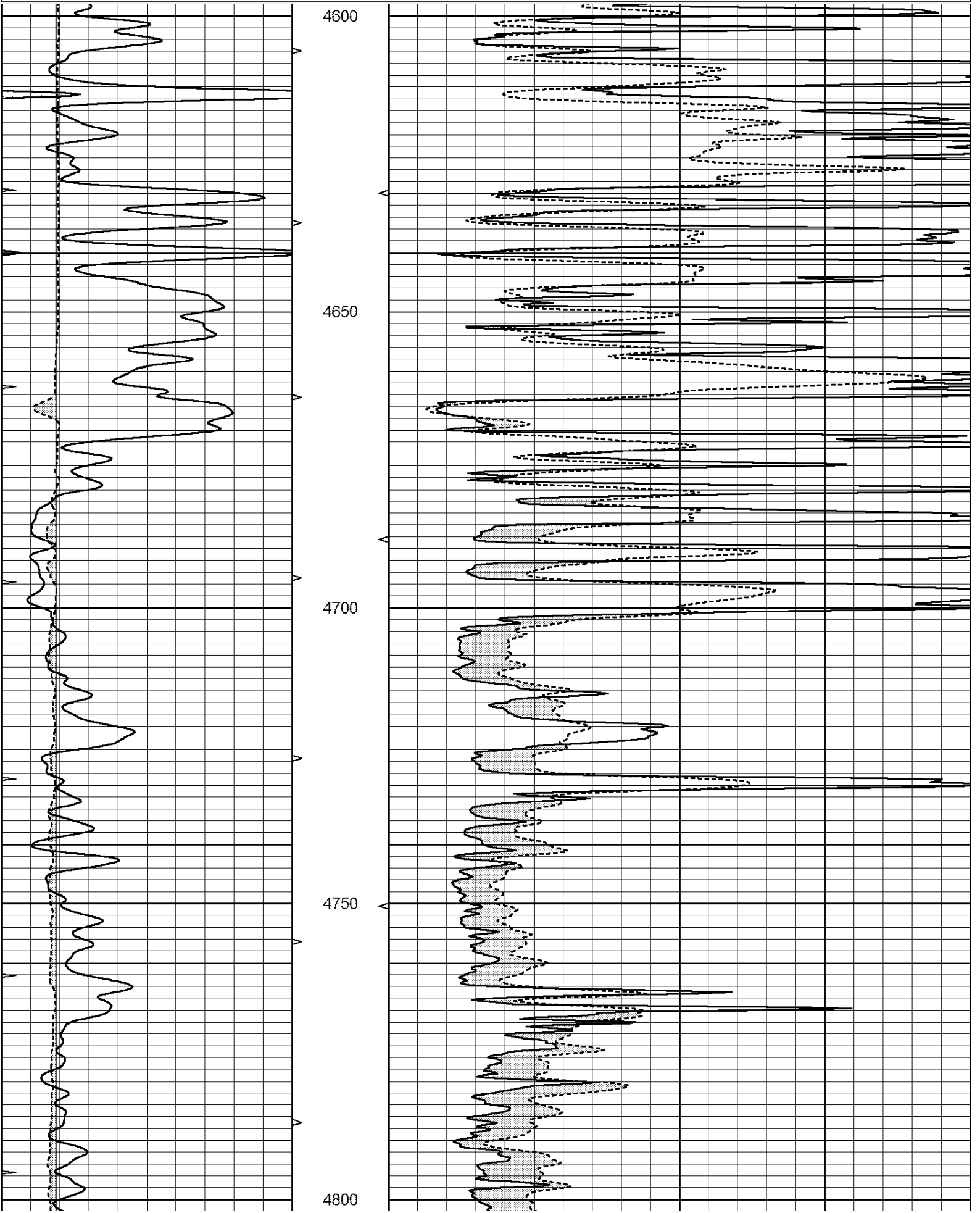
# REPEAT SECTION

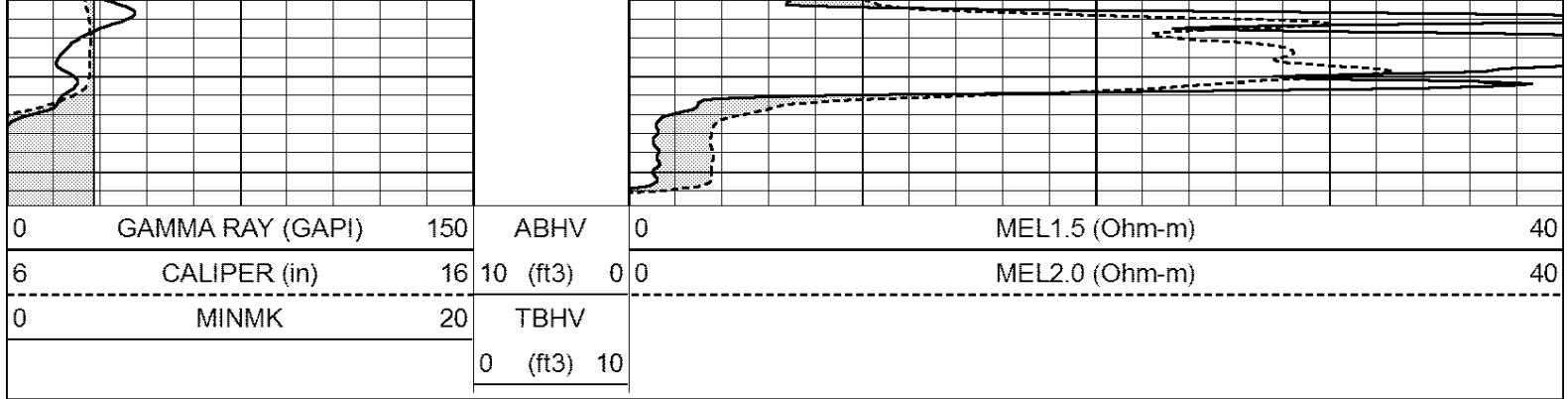
Database File: 408758ddn.db  
 Dataset Pathname: pass5.1  
 Presentation Format: micro  
 Dataset Creation: Mon Apr 30 02:25:55 2012 by Calc Open-Cased 110302  
 Charted by: Depth in Feet scaled 1:240

0	GAMMA RAY (GAPI)	150	ABHV	0	MEL1.5 (Ohm-m)	40
---	------------------	-----	------	---	----------------	----



6	CALIPER (in)	16	10 (ft3)	0 0	MEL2.0 (Ohm-m)	40
0	MINMK	20	TBHV			
			0 (ft3)	10		





### Calibration Report

Database File: 408758ddn.db  
 Dataset Pathname: pass6.4  
 Dataset Creation: Mon Apr 30 03:18:00 2012 by Calc Open-Cased 110302

### MICRO Calibration Report

Serial Number:	2	
Tool Model:	PROBE	
Performed:	Mon Apr 30 02:28:37 2012	
Caliper Calibration:	Gain=4.105	Offset=3.360
	Low Cal	High Cal
References	8.000	15.000
Readings	1.130	2.835
1.5" Calibration:	Gain=22.000	Offset=-1.500
	Low Cal	High Cal
References	0.000	20.000
Readings	0.065	1.210
2" Calibration:	Gain=50.000	Offset=-2.000
	Low Cal	High Cal
References	0.000	20.000
Readings	0.012	1.043

### Gamma Ray Calibration Report

Serial Number:	GR4	
Tool Model:	OPEN	
Performed:	Mon Apr 30 02:28:41 2012	
Calibrator Value:	200.0	GAPI
Background Reading:	0.0	cps
Calibrator Reading:	189.0	cps
Sensitivity:	1.2000	GAPI/cps