



(785) 625-3858

Sonic Cement
Bond Log

15-195-22781-00-00

API No.

Company Hess Oil Company

Well Reiss No. 1-18

Field Wildcat

County Trego

State Kansas

Location

350' FSL & 2610' FEL

Other Services
Perforate

Sec: 18

Twp: 14S

Rge: 22W

Elevation

Permanent Datum Ground Level Elevation 2203

Log Measured From Kelly Bushing 5 Ft. Above Perm. Datum

Drilling Measured From Kelly Bushing

K.B. 2208
D.F.
G.L. 2203

Run Number

One

Date Survey

5/29/2012

Date Cementing

5/17/2012

Type Cementing Operation

Primary

Depth Driller

4190

Depth Logger

4147

Logged Interval

4145 to 2900

Casing Driller

5.5 @ T.D.

Float Collar -- D.V. Tool

||||| 1617

Squeeze Depth

|||||

Amount & Type Cement

|||||

Amount & Type Admix

|||||

Type Fluid In Hole

Water

Fluid Level

180

Salinity PPM CL

|||||

Weight lb/gal -- Vis.

|||||

Approx. Logged Cement Top

3060

Calculated Cement Top

|||||

Max. Hole Temperature

118

Tool No.

R-1

Spacing Recorded

3-5

Equipment -- Location

72

Recorded By

K. Ladriagan

Witnessed By

Brad Siroky

<<< Fold Here >>>

All interpretations are opinions based on inferences from electrical or other measurements and we cannot and do not guarantee the accuracy or correctness of any interpretation, and we shall not, except in the case of gross or willful negligence on our part, be liable or responsible for any loss, costs, damages, or expenses incurred or sustained by anyone resulting from any interpretation made by any of our officers, agents or employees. These interpretations are also subject to our general terms and conditions set out in our current Price Schedule.

Comments

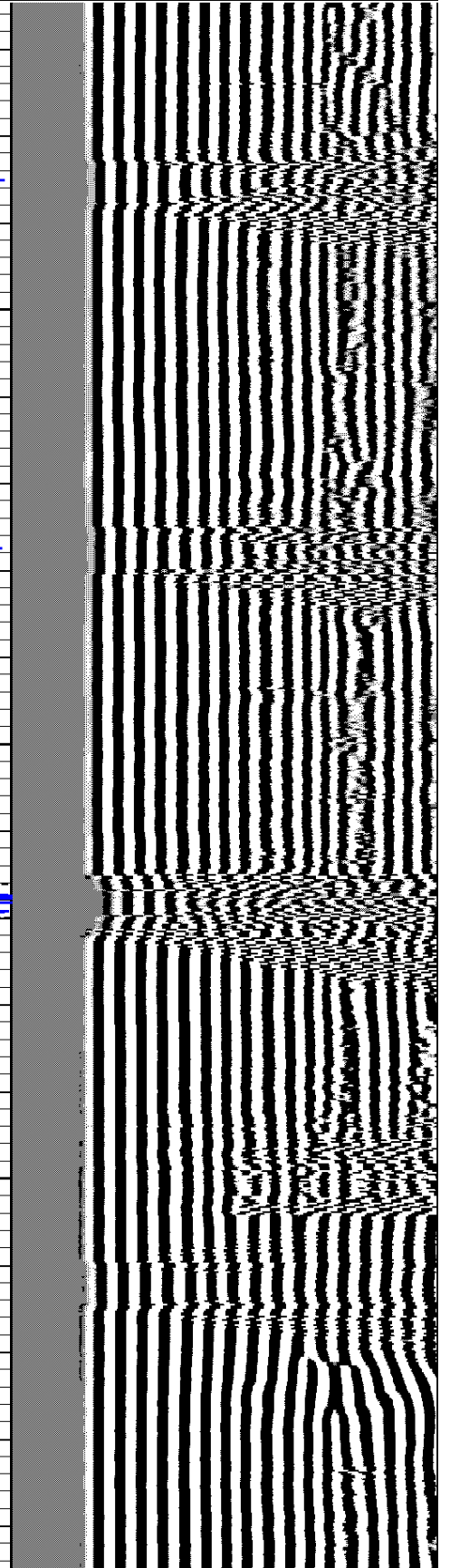
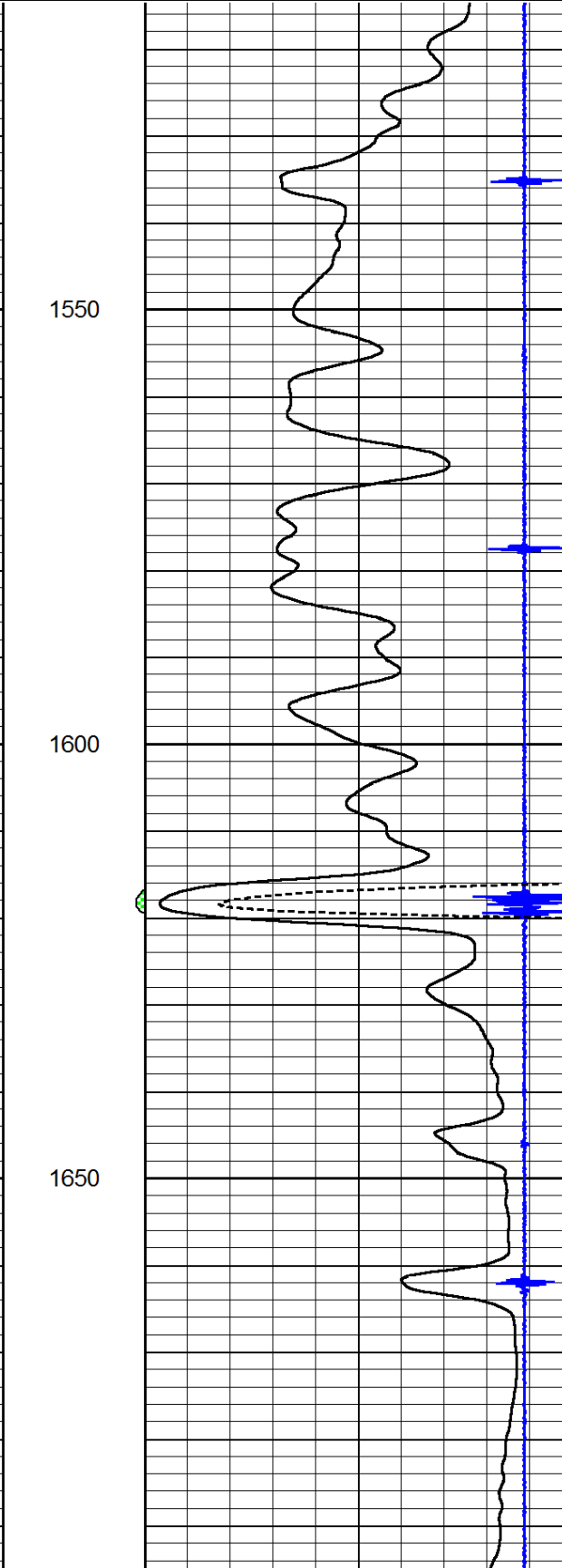
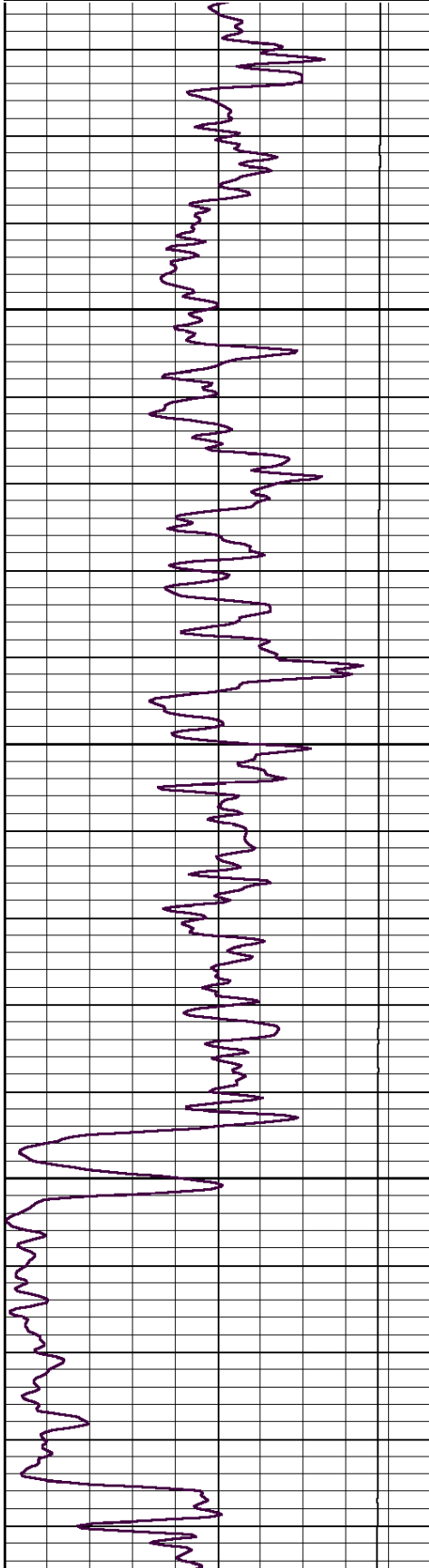
Thank you for using Log-Tech (785) 625-3858
Ogallah Exit & I-70, South to Curve (Keep Straight)
2 South to U Road, 3 West, 1 South,
West Into.

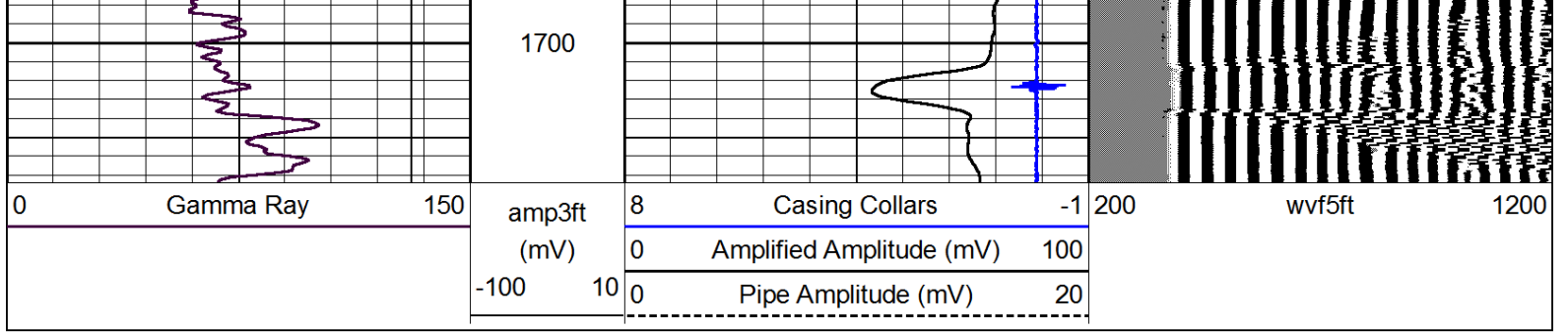


D.V. Tool @ 1617

Database File: hess_ries1-18.db
 Dataset Pathname: grcbl/run1/pass5
 Presentation Format: cbldr
 Dataset Creation: Tue May 29 15:32:41 2012 by Log SCH 111116
 Charted by: Depth in Feet scaled 1:240

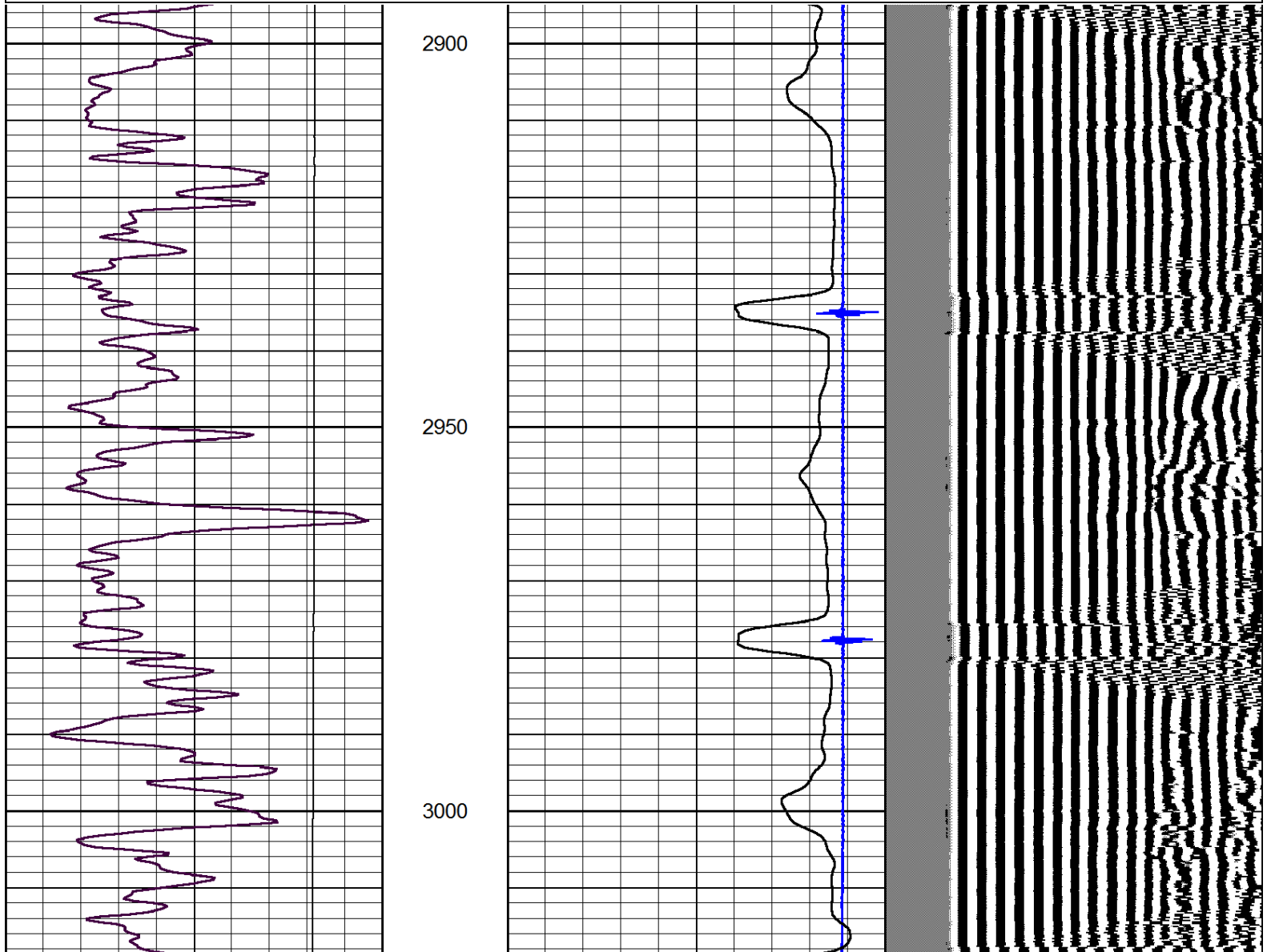
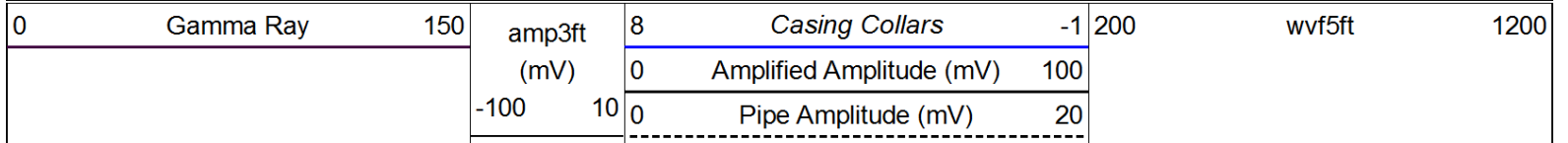
0	Gamma Ray	150	amp3ft	8	Casing Collars	-1	200	wvf5ft	1200
			(mV)	0	Amplified Amplitude (mV)	100			
			-100 10	0	Pipe Amplitude (mV)	20			

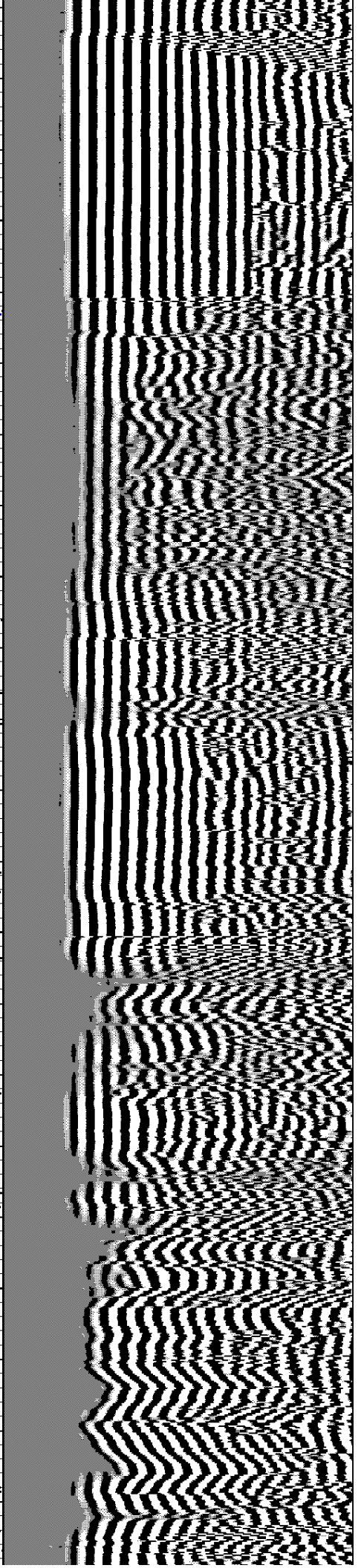
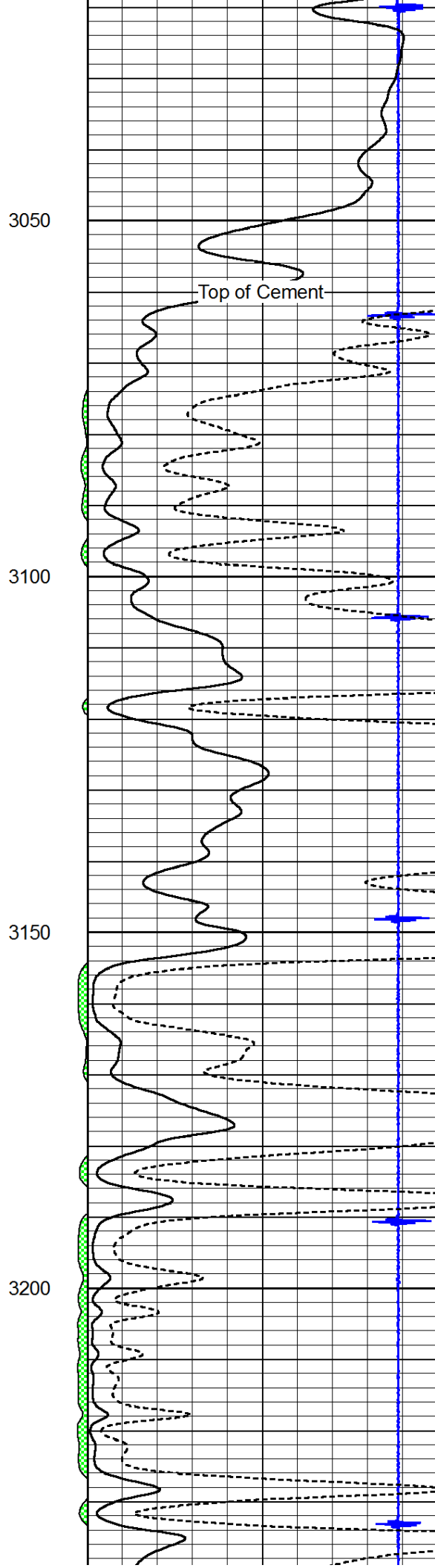
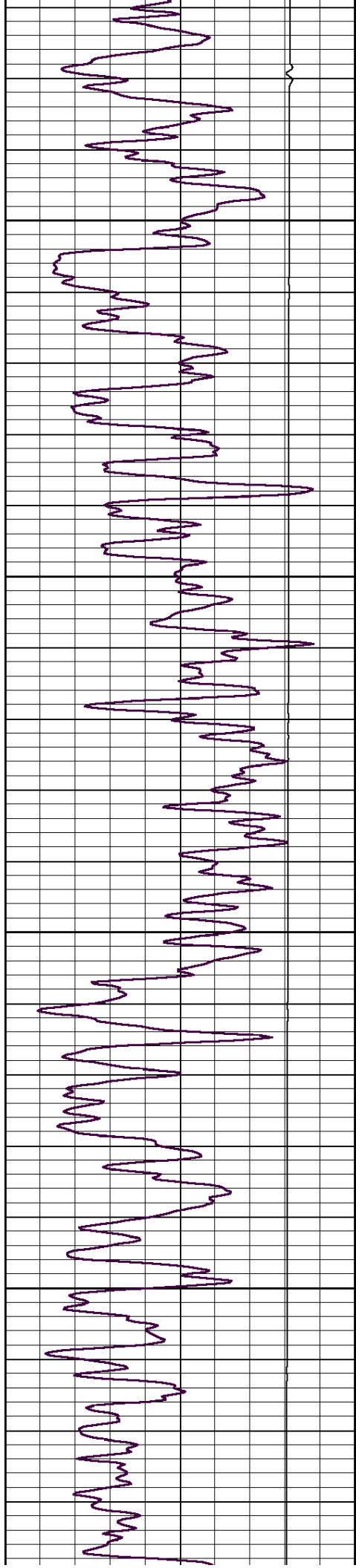


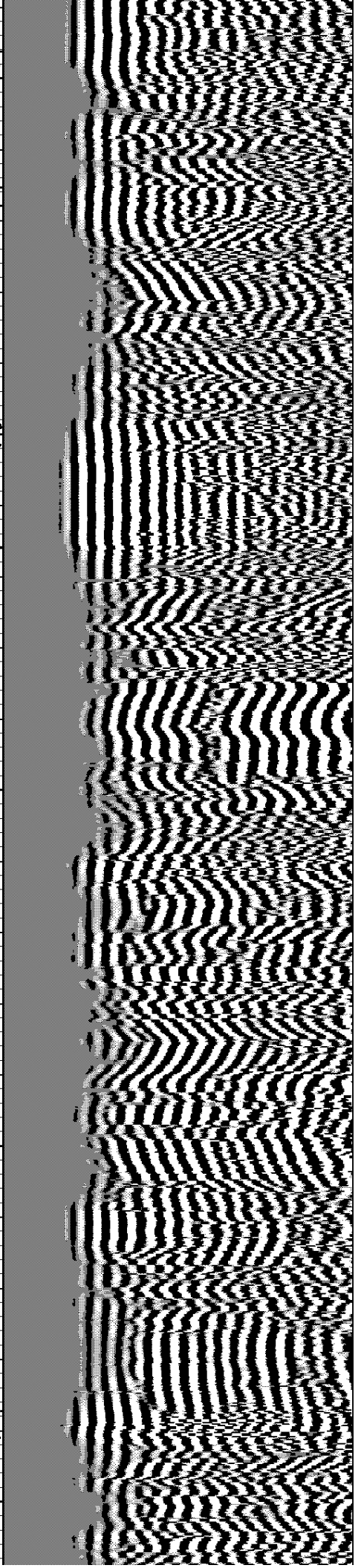
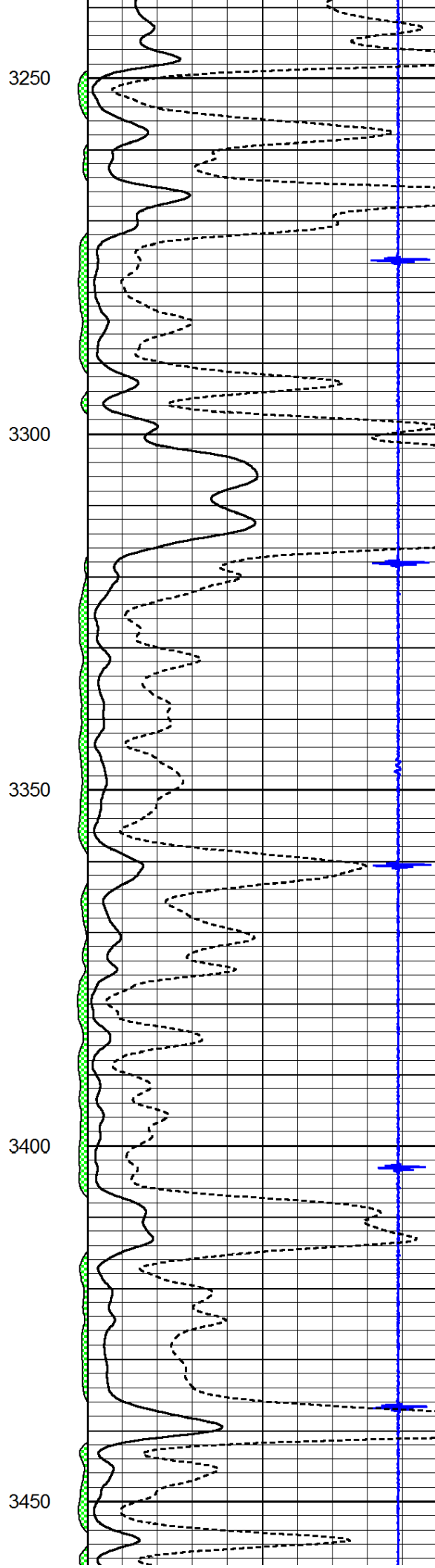
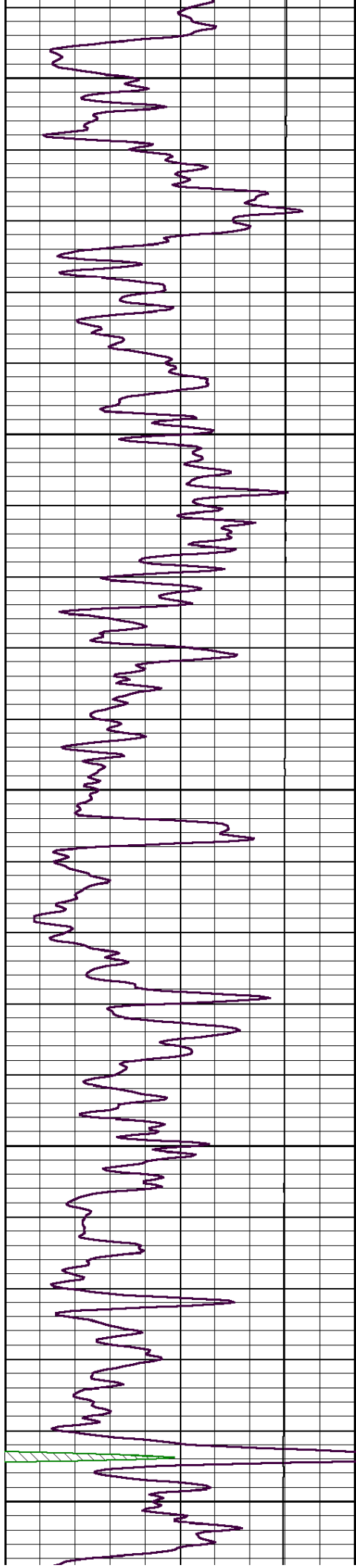


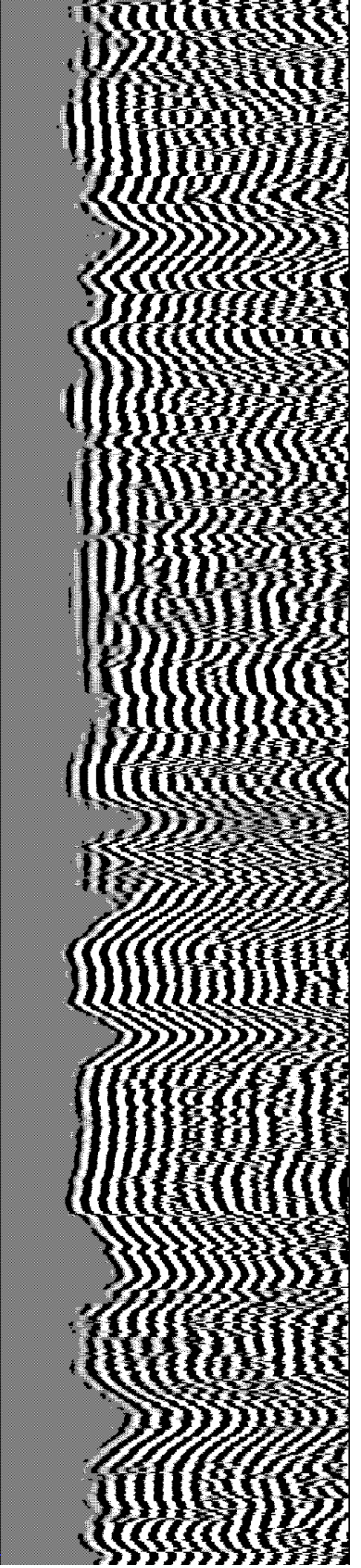
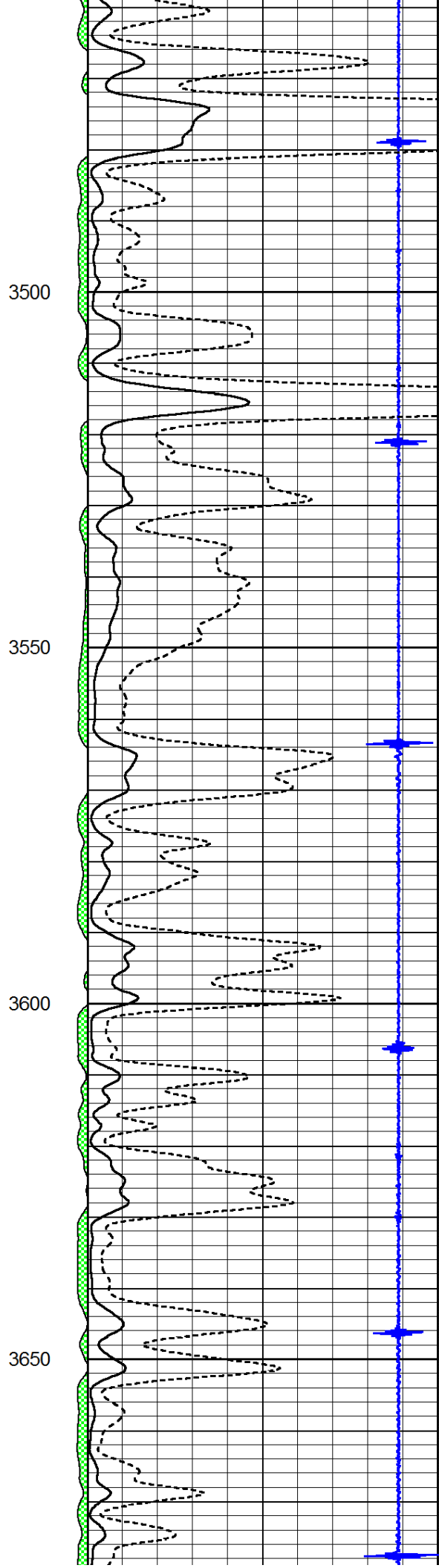
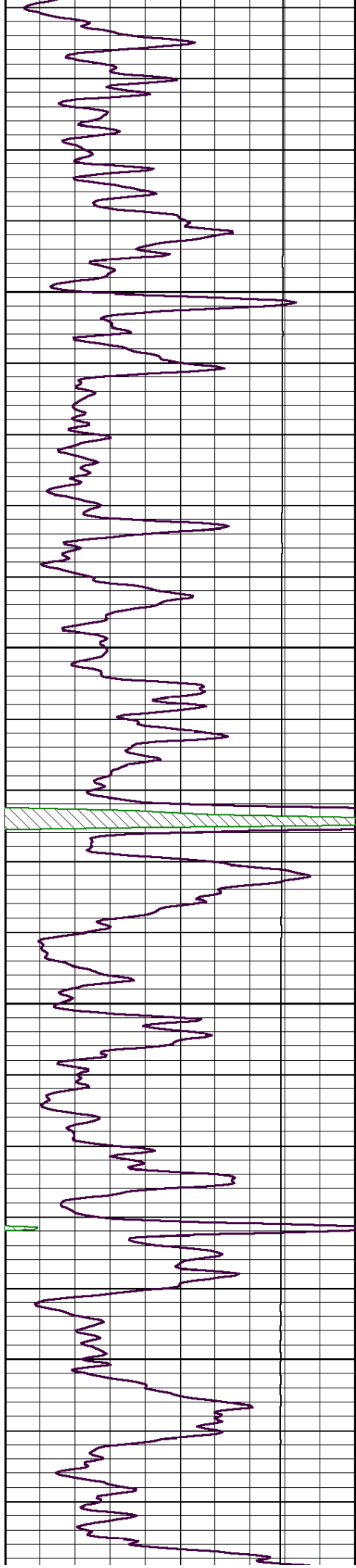
Main Pass

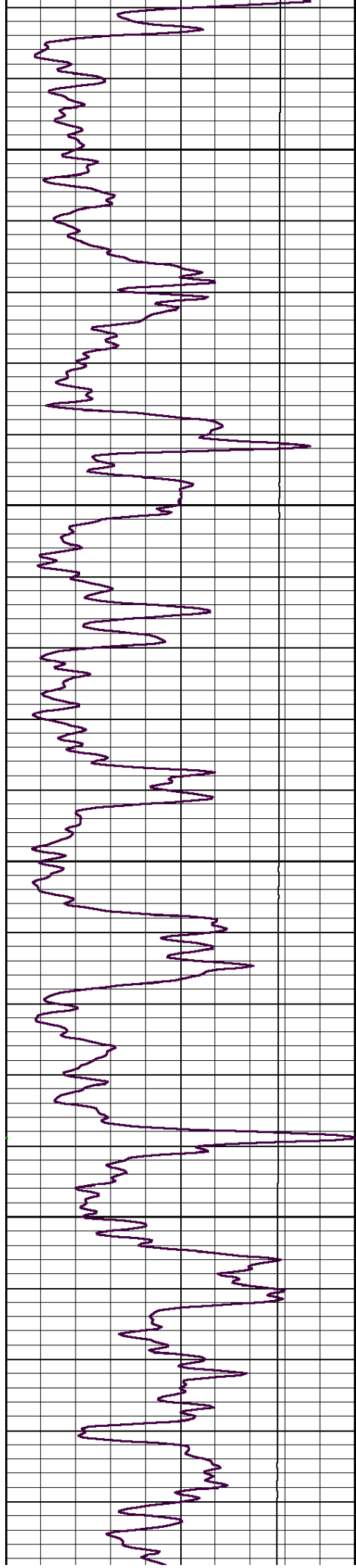
Database File: hess_ries1-18.db
 Dataset Pathname: grcbl/run1/pass4
 Presentation Format: cbldr
 Dataset Creation: Tue May 29 15:04:33 2012 by Log SCH 111116
 Charted by: Depth in Feet scaled 1:240









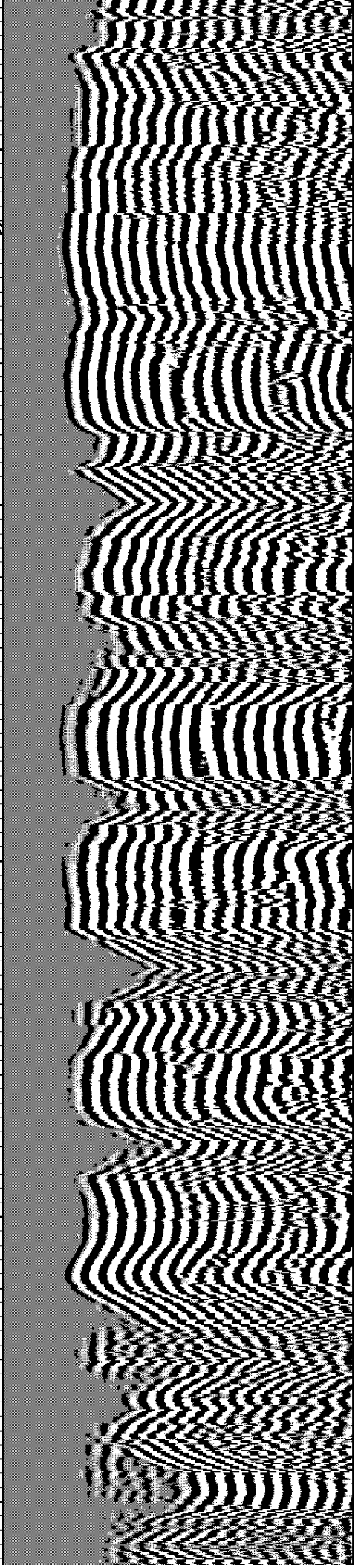
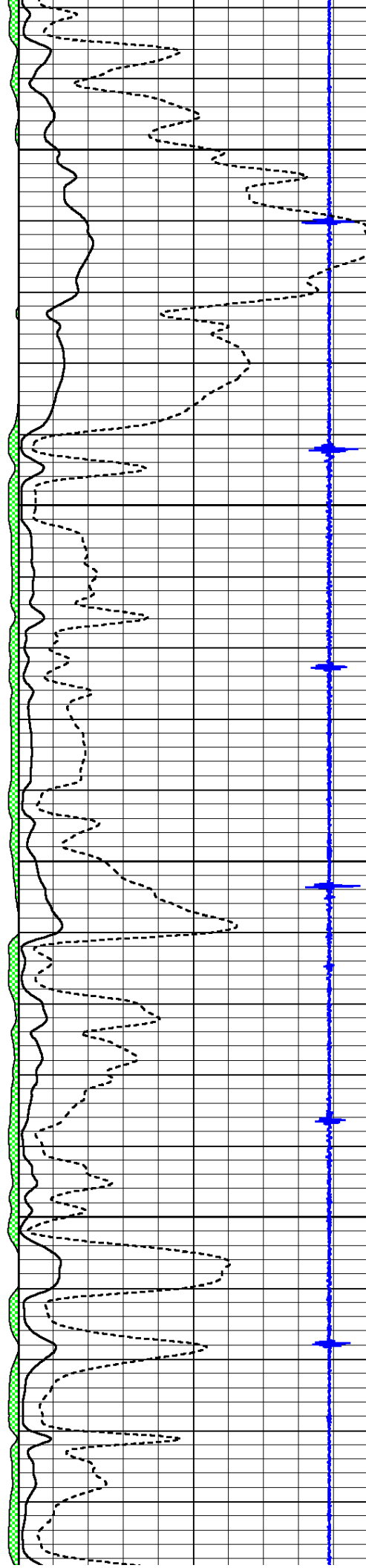


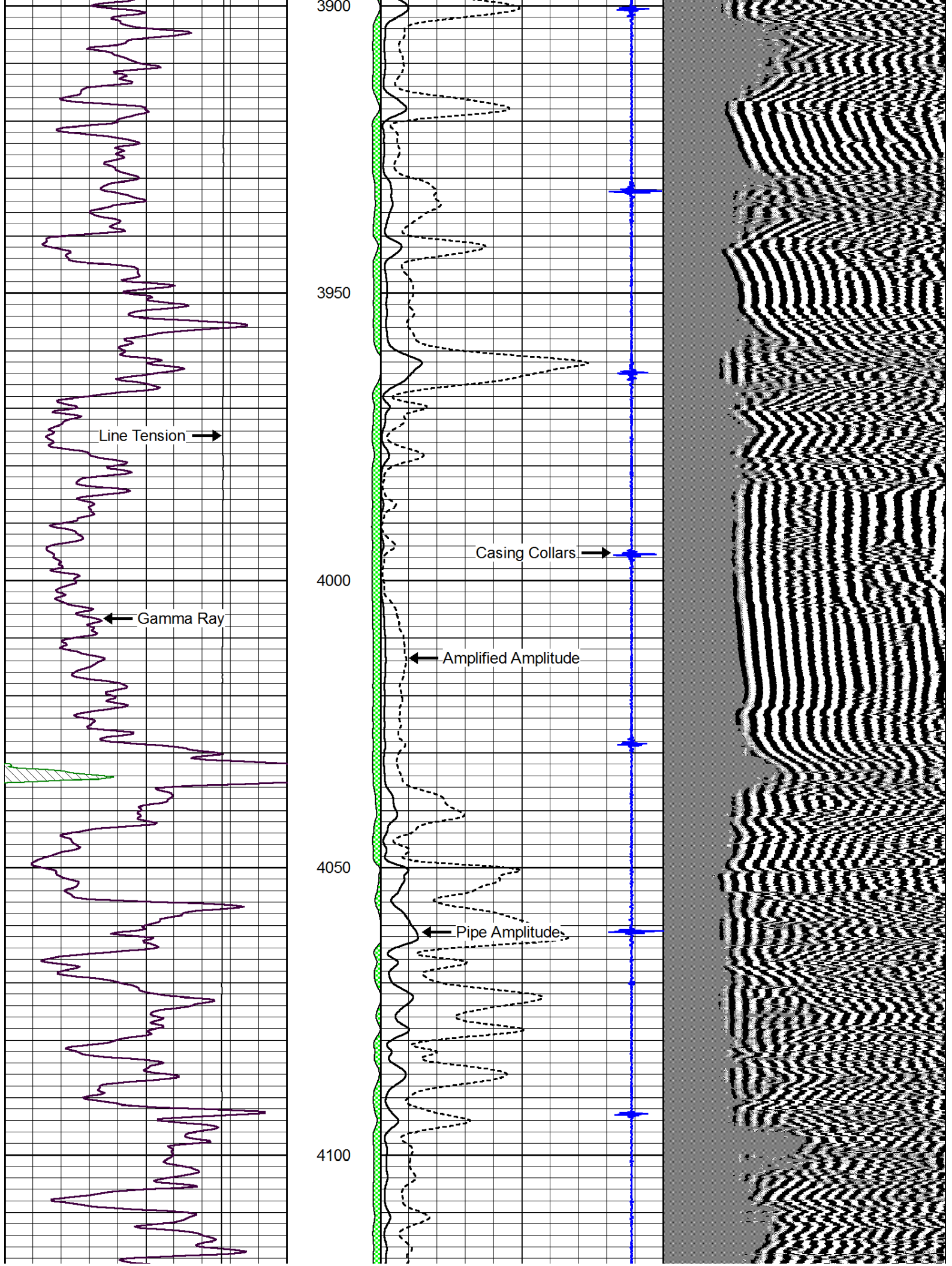
3700

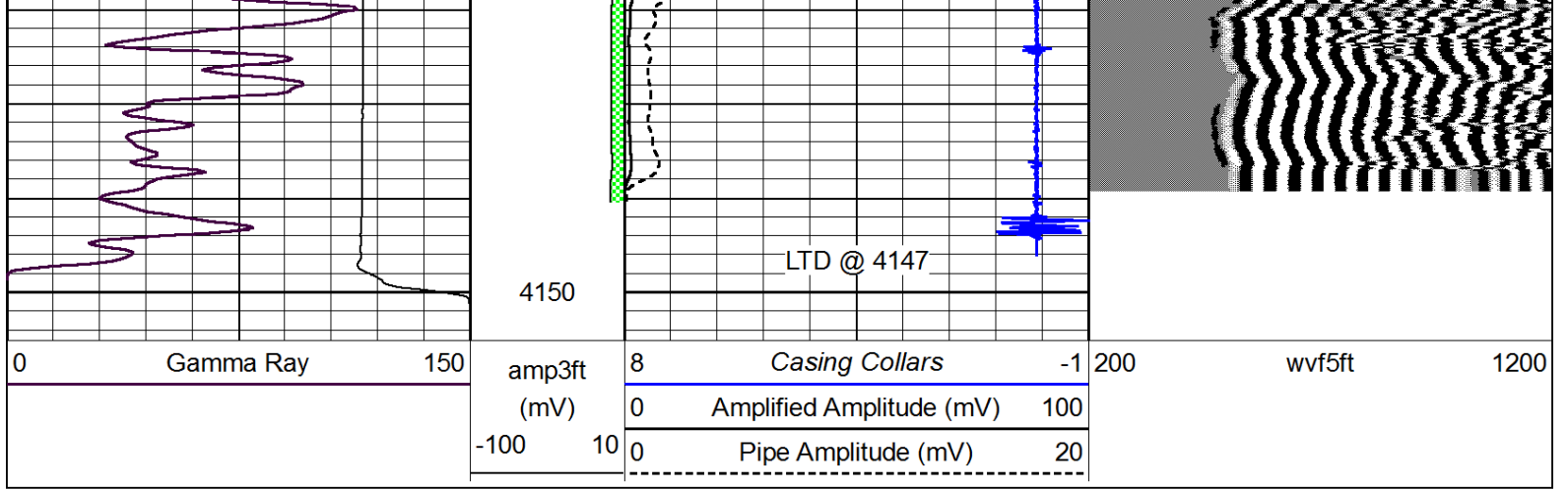
3750

3800

3850







Repeat Section

Database File: hess_ries1-18.db
 Dataset Pathname: grcbl/run1/pass3
 Presentation Format: cbldr
 Dataset Creation: Tue May 29 14:58:55 2012 by Log SCH 111116
 Charted by: Depth in Feet scaled 1:240

