



SUPERIOR
Hays,
Kansas

**DUAL INDUCTION
LOG**

Company CRAWFORD OIL & GAS CO. LLC.
Well ZIMMERMAN #1-24
Field WILDCAT
County GOVE
State KANSAS

Company CRAWFORD OIL & GAS COMPANY, LLC.
Well ZIMMERMAN #1-24
Field WILDCAT
County GOVE State KANSAS

Location: API # : 15-063-22032-0000
2617' FSL & 622' FEL
SEC 24 TWP 13S RGE 31W
Permanent Datum GROUND LEVEL Elevation 2835
Log Measured From KELLY BUSHING 5' A.G.L.
Drilling Measured From KELLY BUSHING
Elevation
K.B. 2840
D.F. 2838
G.L. 2835

Date	8/18/12		
Run Number	ONE		
Depth Driller	4590		
Depth Logger	4590		
Bottom Logged Interval	4588		
Top Log Interval	00		
Casing Driller	8 5/8"@218'		
Casing Logger	218		
Bit Size	7 7/8"		
Type Fluid in Hole	CHEMICAL MUD	CHLORIDES 2,000 PPM	
Density / Viscosity	9.460		
pH / Fluid Loss	10.5/7.8		
Source of Sample	FLOWLINE		
Rm @ Meas. Temp	2.40@88F		
Rmt @ Meas. Temp	1.80@88F		
Rmc @ Meas. Temp	2.88@88F		
Source of Rmf / Rmc	MEASUREMENT		
Rm @ BHT	1.75@121F		
Time Circulation Stopped	2.5 HOURS		
Time Logger on Bottom	7:00 A.M.		
Maximum Recorded Temperature	121F		
Equipment Number	4010		
Location	HAYS, KANSAS		
Recorded By	JEFF LUEBBERS		
Witnessed By	LARRY FRIEND		

<<< Fold Here >>>

All interpretations are opinions based on inferences from electrical or other measurements and we cannot and do not guarantee the accuracy or correctness of any interpretation, and we shall not, except in the case of gross or willful negligence on our part, be liable or responsible for any loss, costs, damages, or expenses incurred or sustained by anyone resulting from any interpretation made by any of our officers, agents or employees. These interpretations are also subject to our general terms and conditions set out in our current Price Schedule.

Comments

THANK YOU FOR USING SUPERIOR WELL SERVICE HAYS, KANSAS (785) 628-6395
DIRECTIONS
GRINNELL, KS. & I-70, 10 1/2S. TO "RD. S", 4W. TO "RD. 22", 3 1/2S., W. INTO



SUPERIOR
Hays,
Kansas

MAIN SECTION

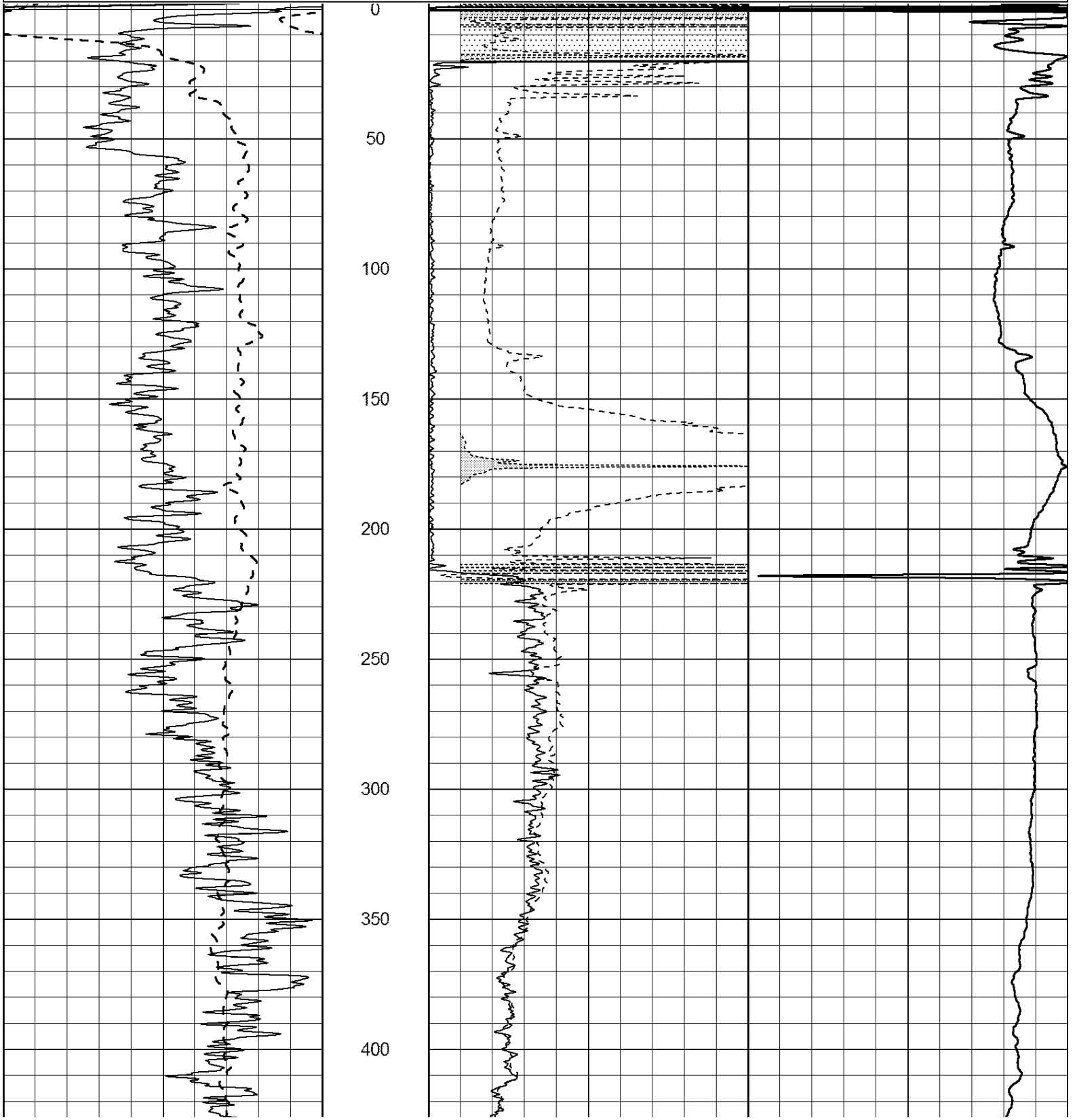
Database File: 409504pe.db
 Dataset Pathname: pass3.8
 Presentation Format: dil2
 Dataset Creation: Sat Aug 18 08:38:50 2012 by Calc Open-Cased 110302
 Charted by: Depth in Feet scaled 1:600

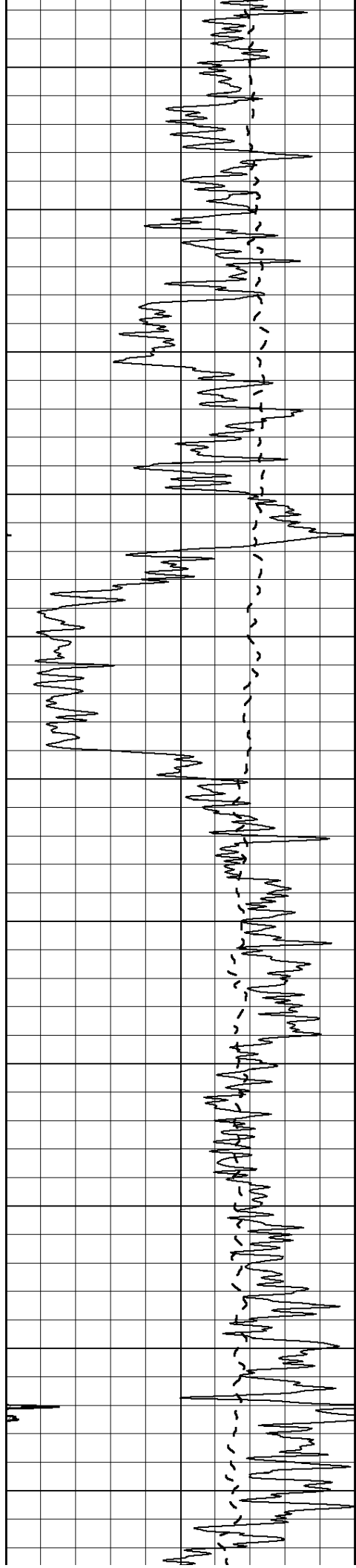
0	Gamma Ray (GAPI)	150
-100	SP (mV)	100

0	RLL3 (Ohm-m)	50
0	RILD (Ohm-m)	50

1000	CILD (mmho/m)	0
------	---------------	---

50	RILD X10 (Ohm-m)	500
50	RLL3 X10 (Ohm-m)	500





450

500

550

600

650

700

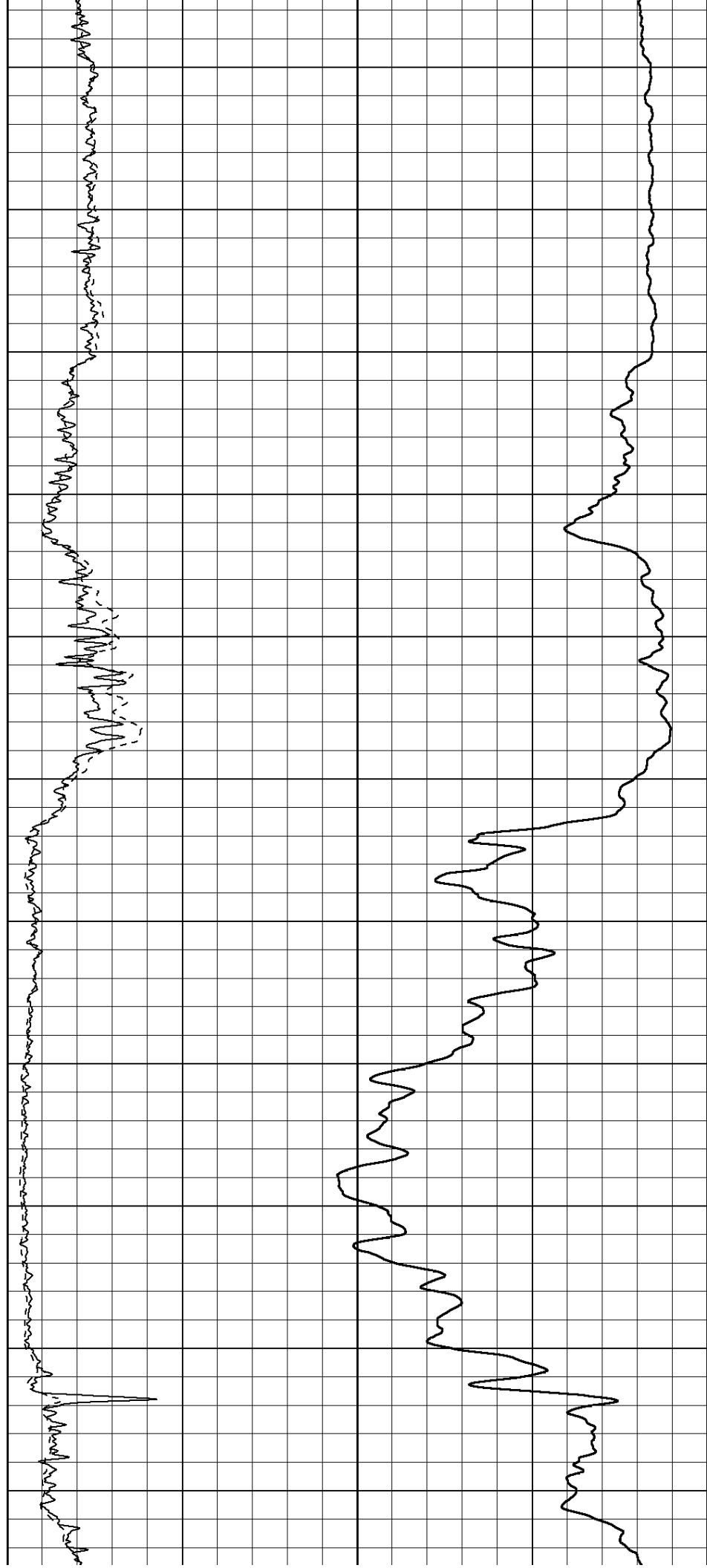
750

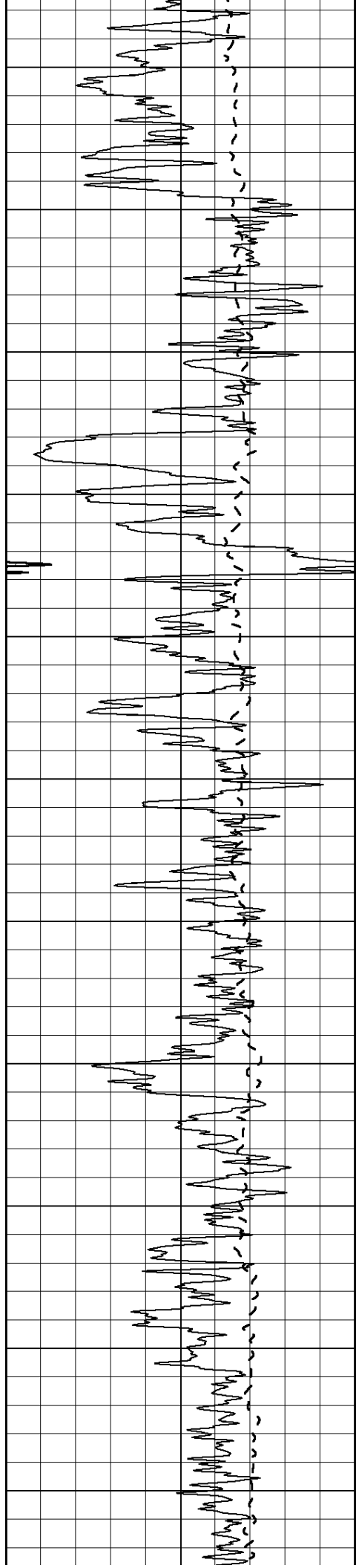
800

850

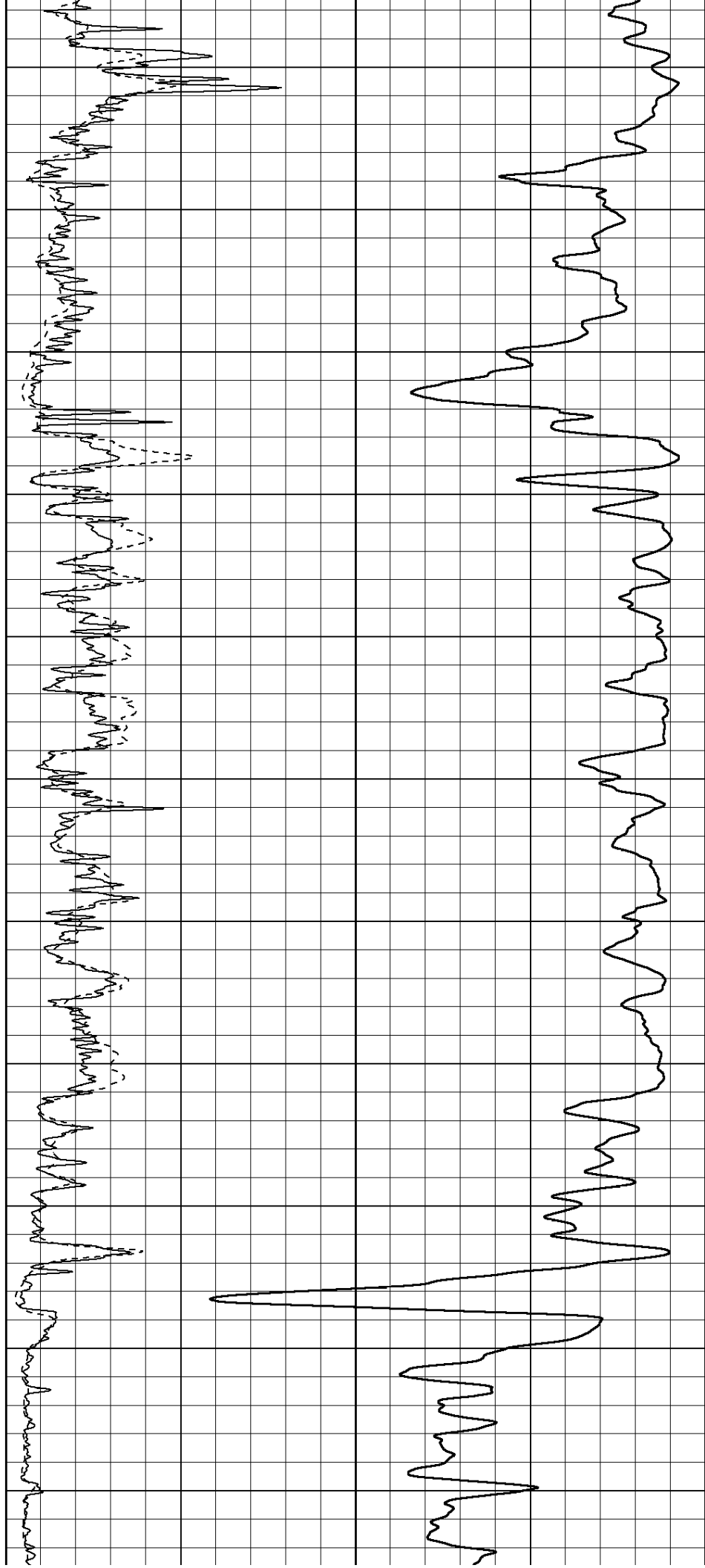
900

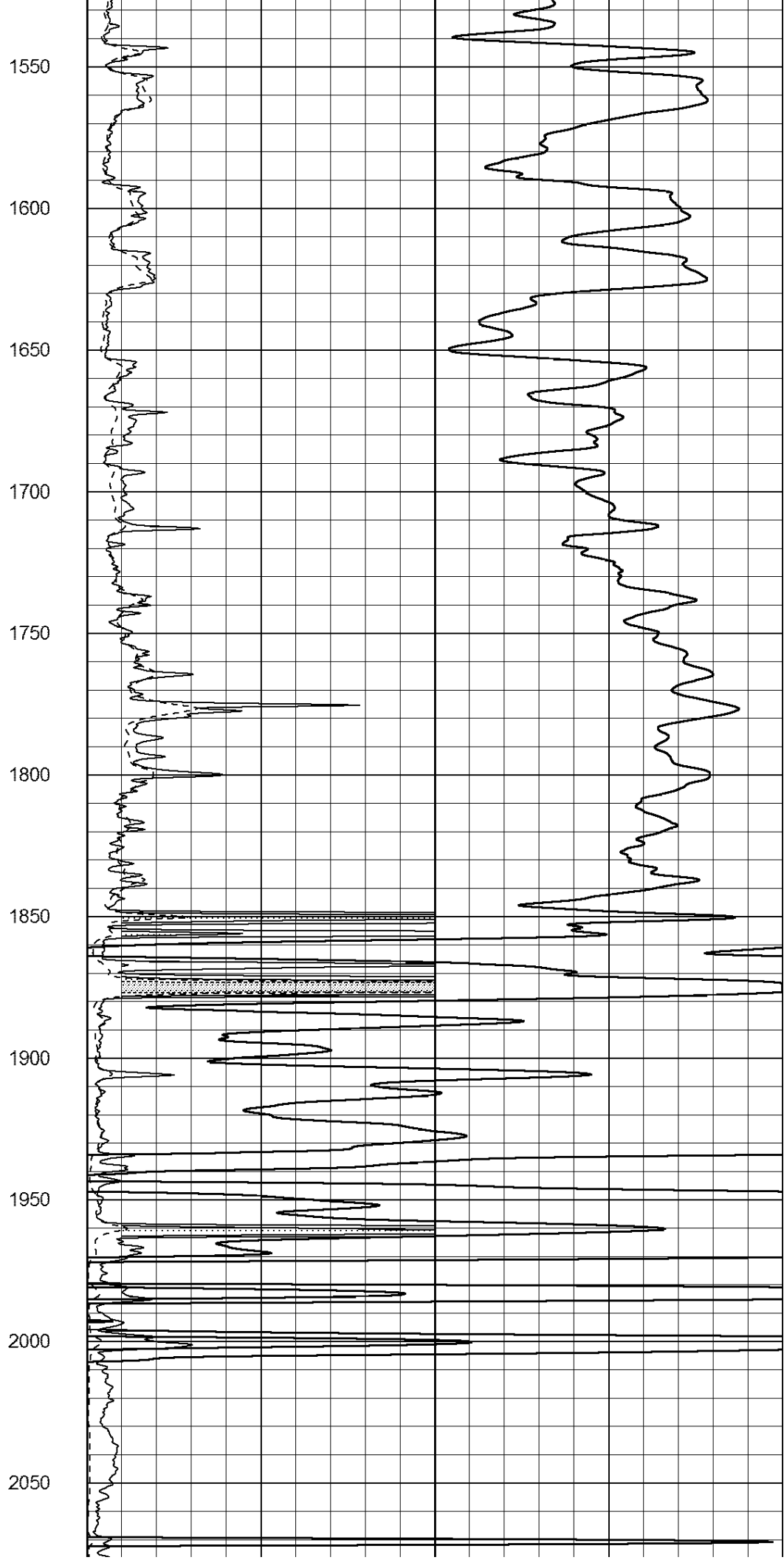
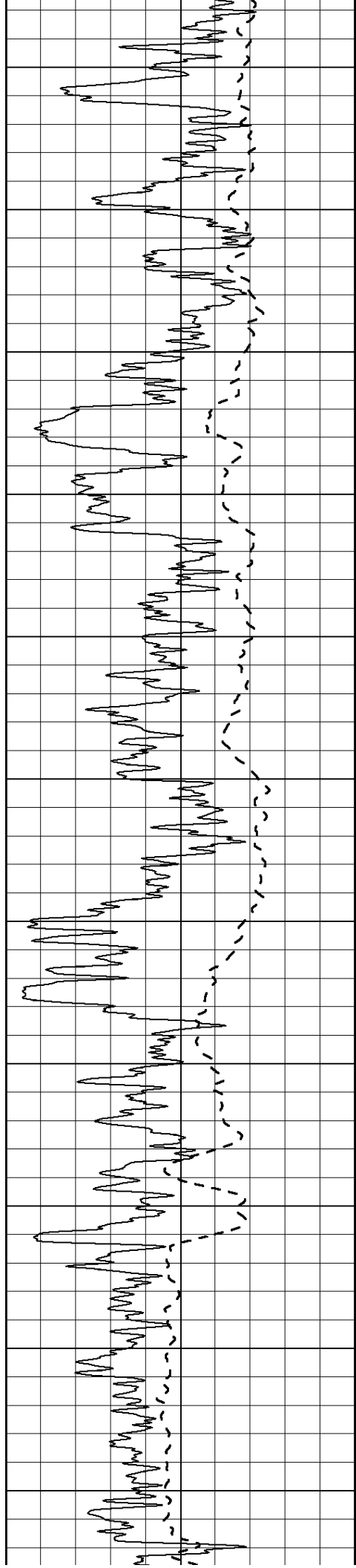
950

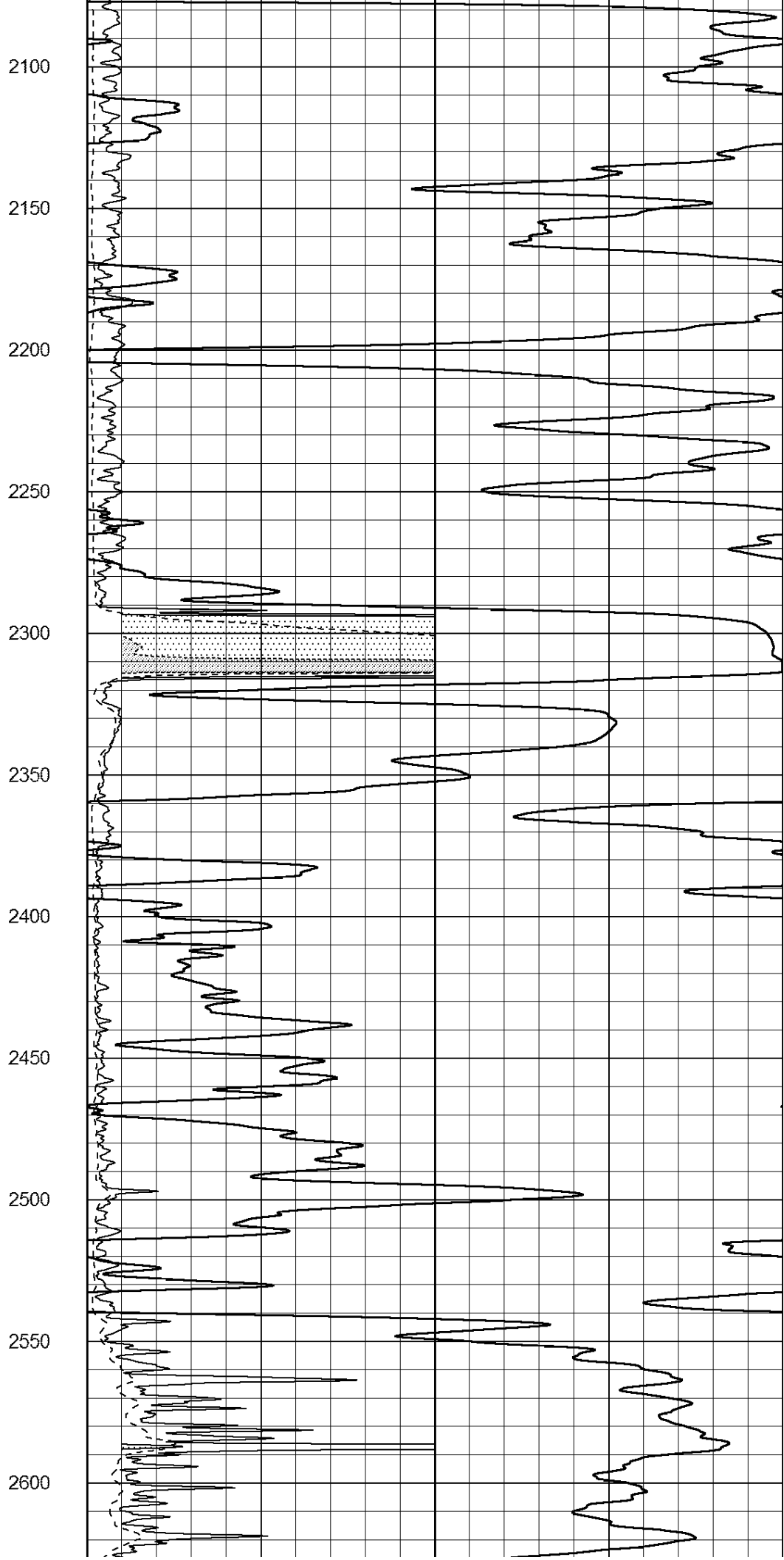
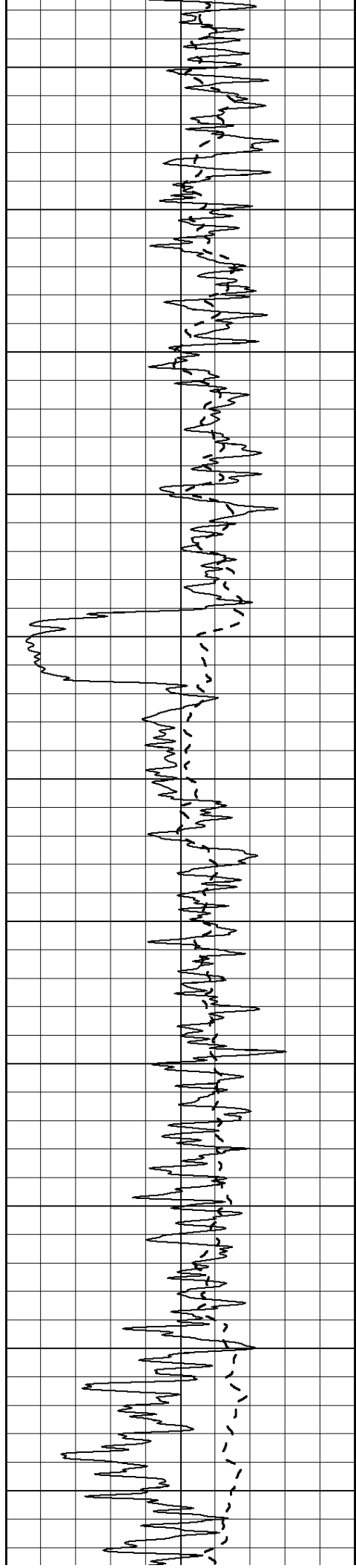


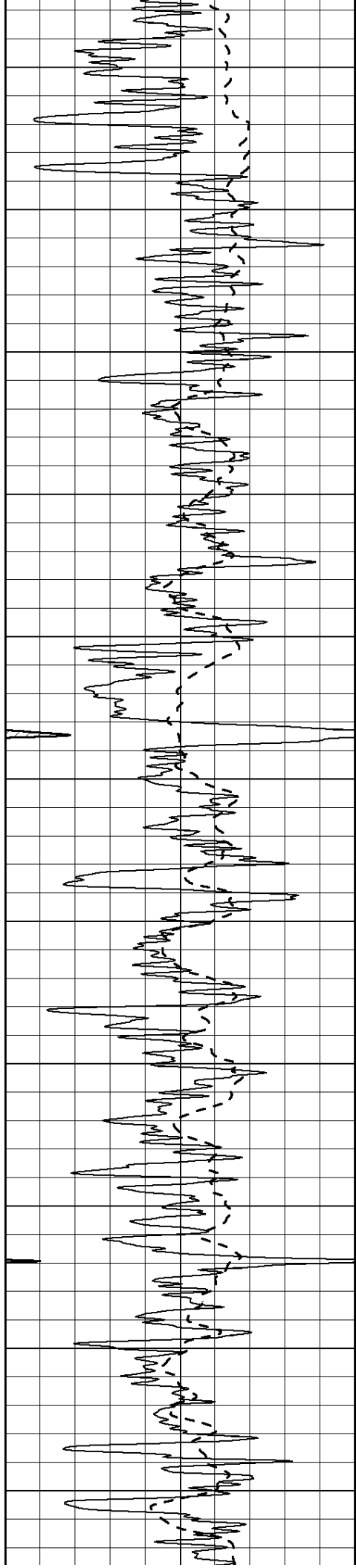


1000
1050
1100
1150
1200
1250
1300
1350
1400
1450
1500









2650

2700

2750

2800

2850

2900

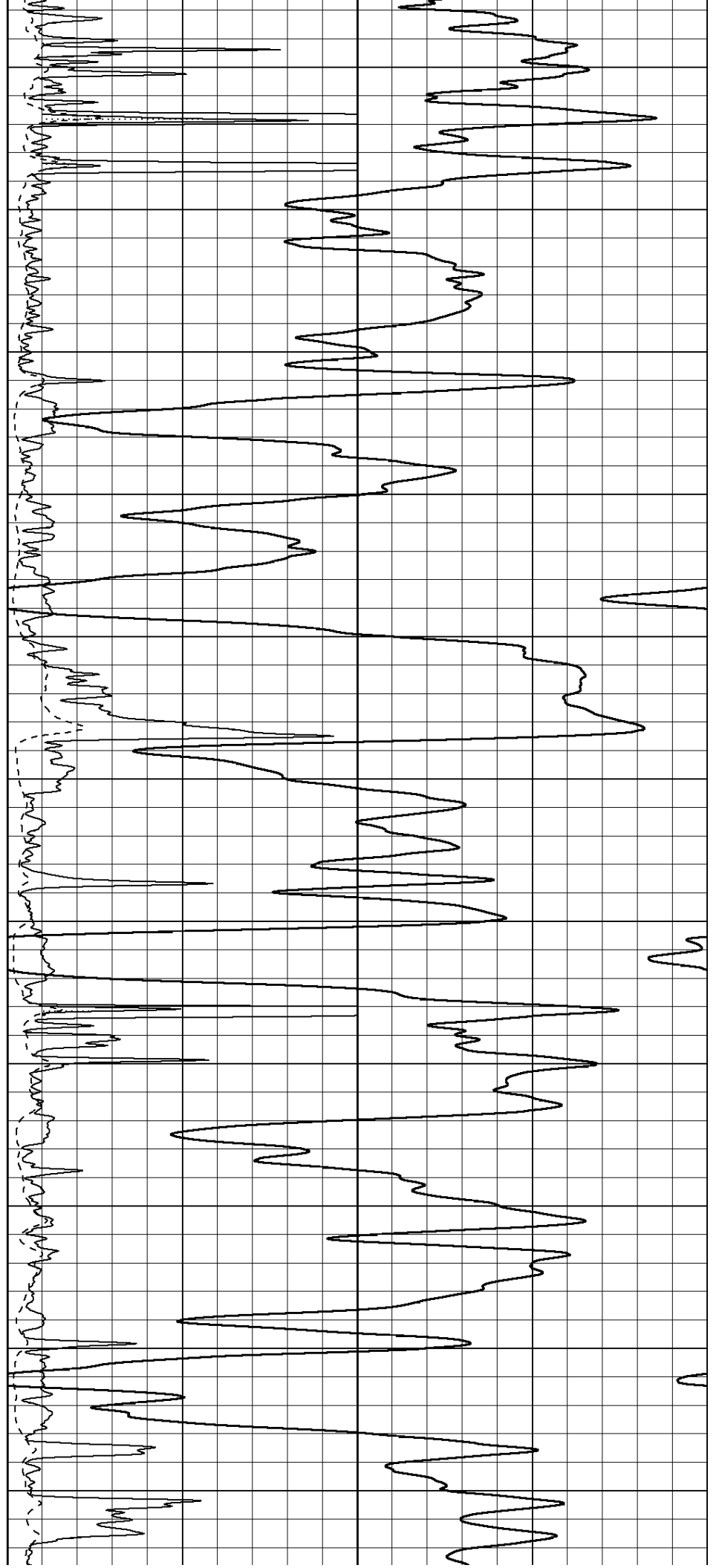
2950

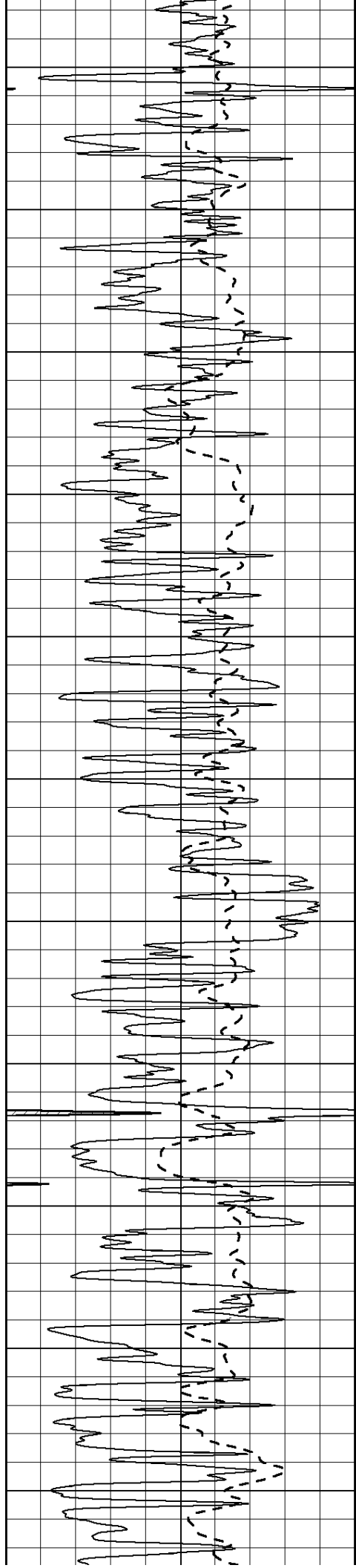
3000

3050

3100

3150





3200

3250

3300

3350

3400

3450

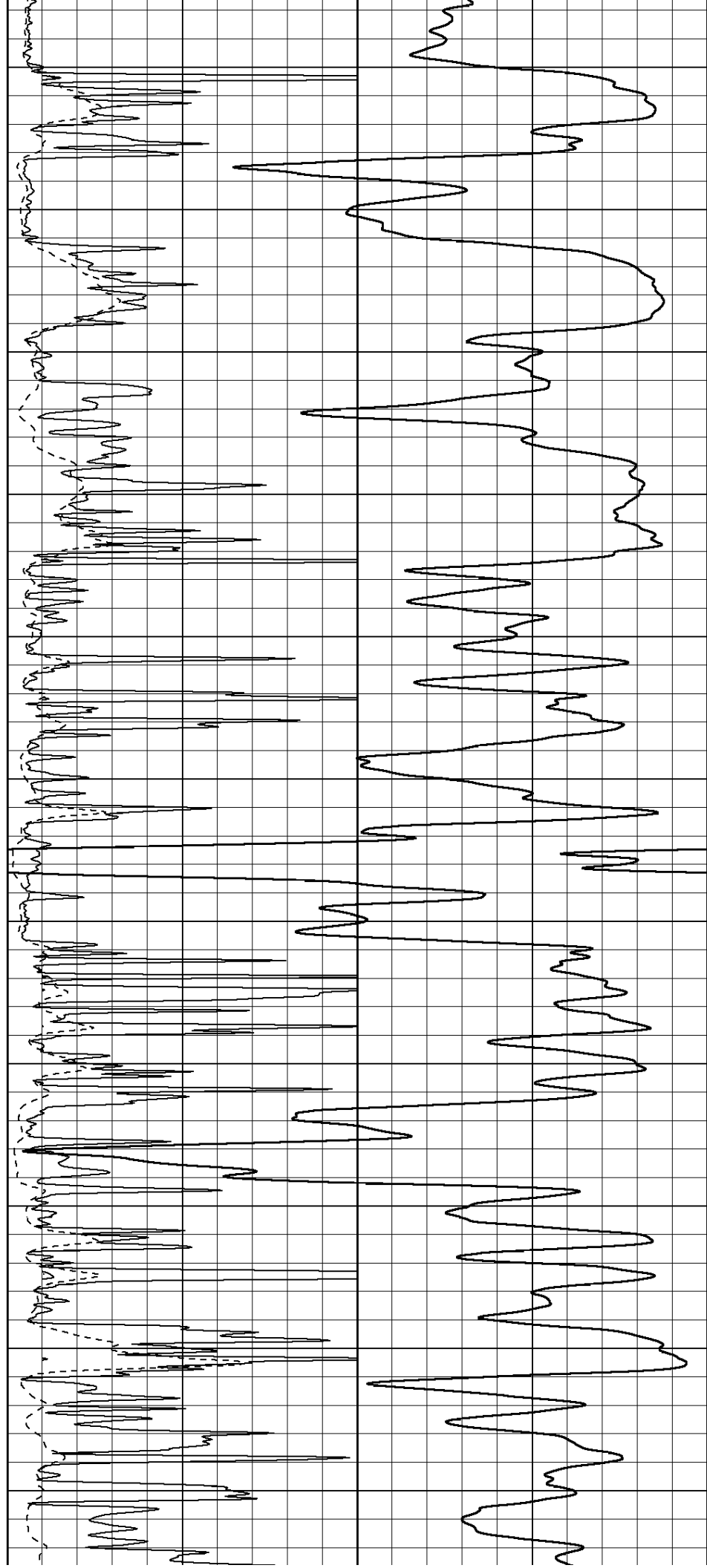
3500

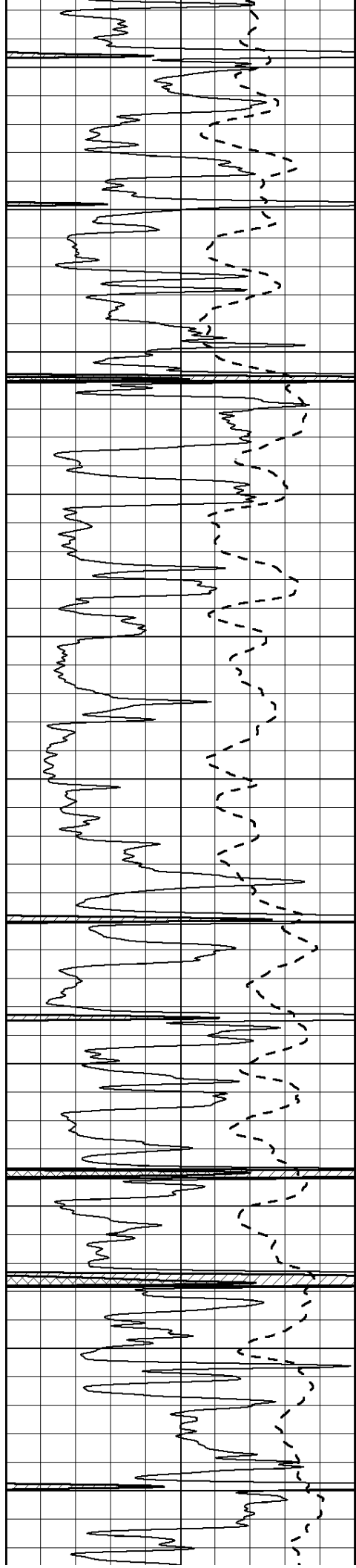
3550

3600

3650

3700





3750

3800

3850

3900

3950

4000

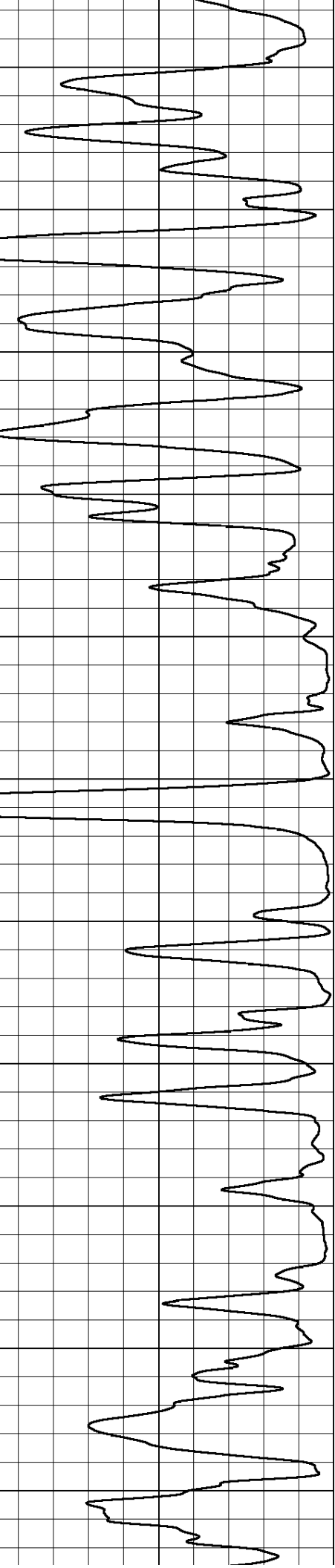
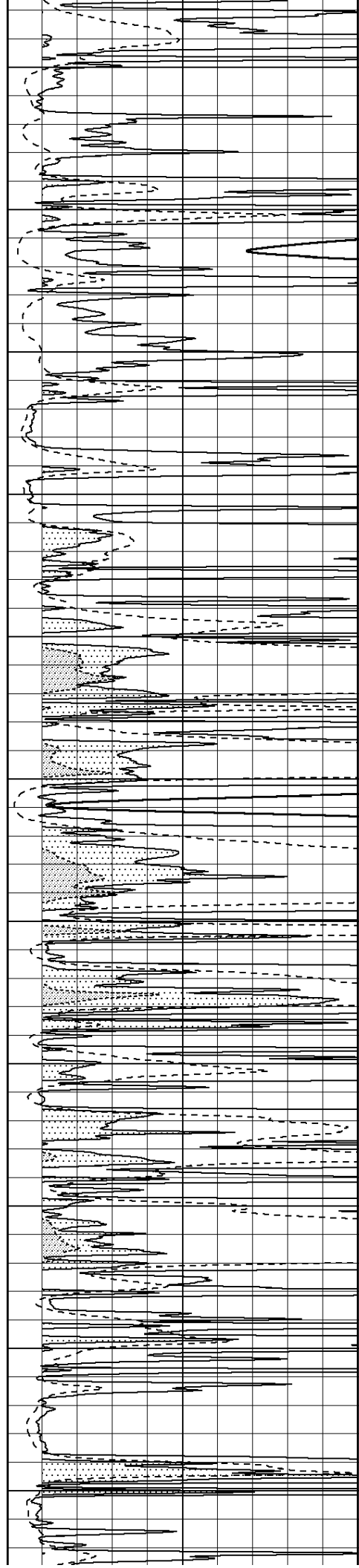
4050

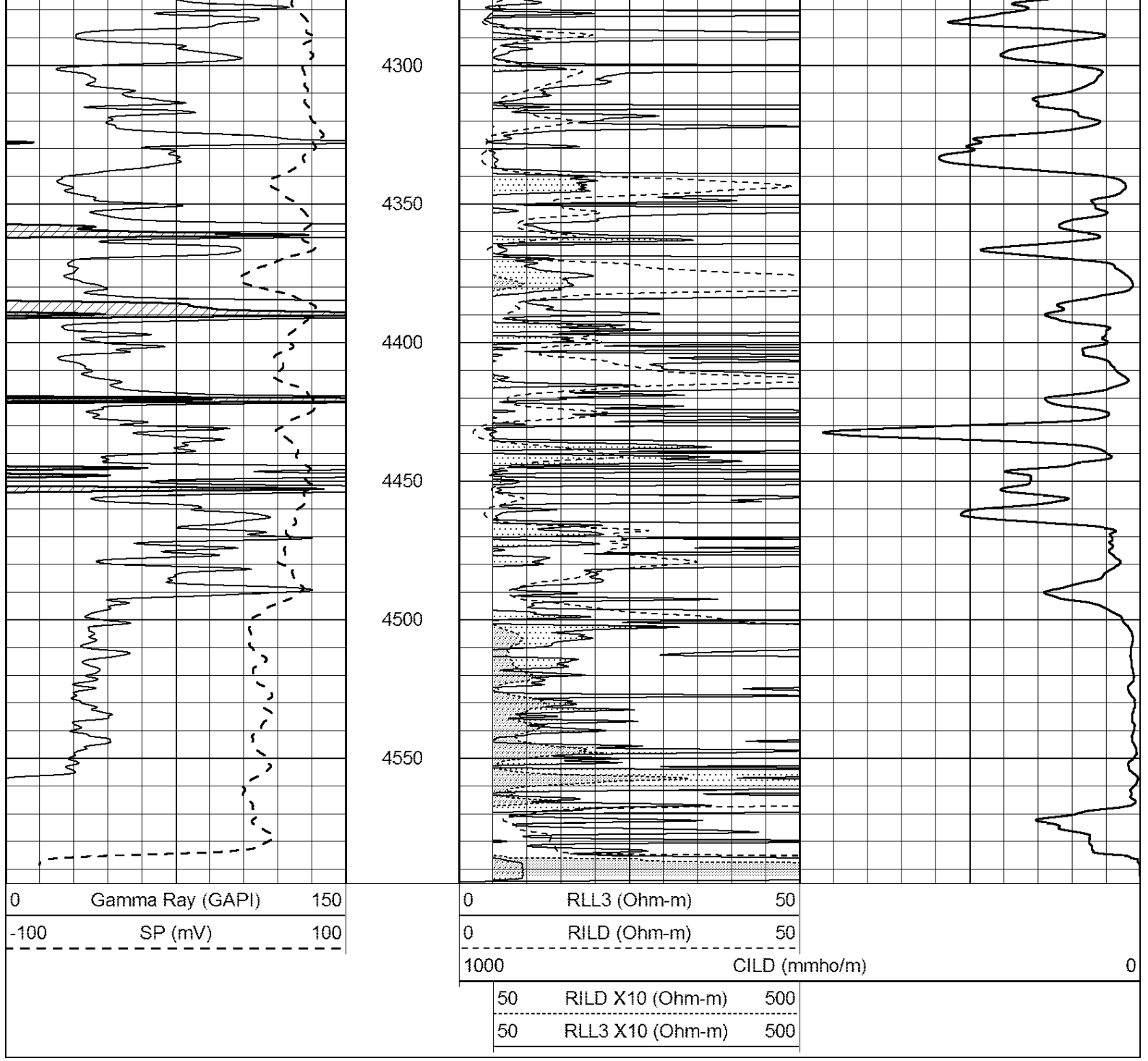
4100

4150

4200

4250





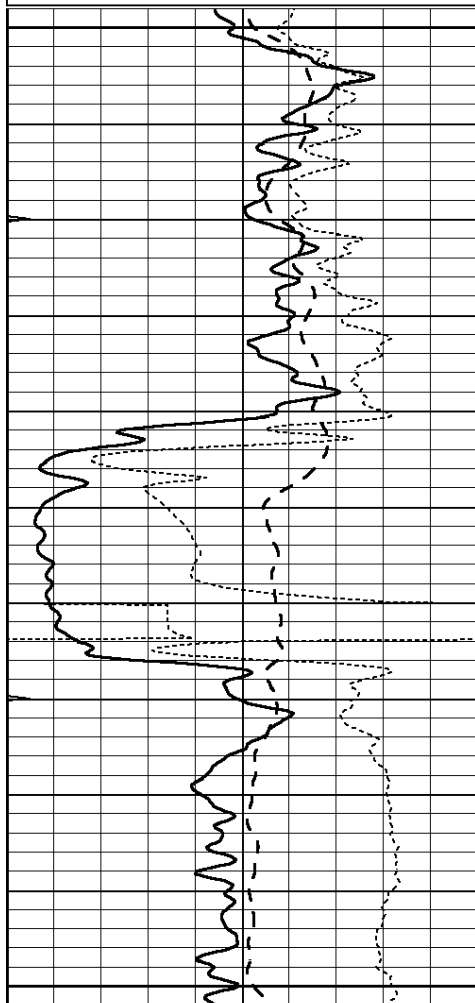
SUPERIOR
Hays,
Kansas

ANHYDRITE

Database File: 409504pe.db
 Dataset Pathname: pass3.9
 Presentation Format: dil
 Dataset Creation: Sat Aug 18 08:39:35 2012 by Calc Open-Cased 110302
 Charted by: Depth in Feet scaled 1:240

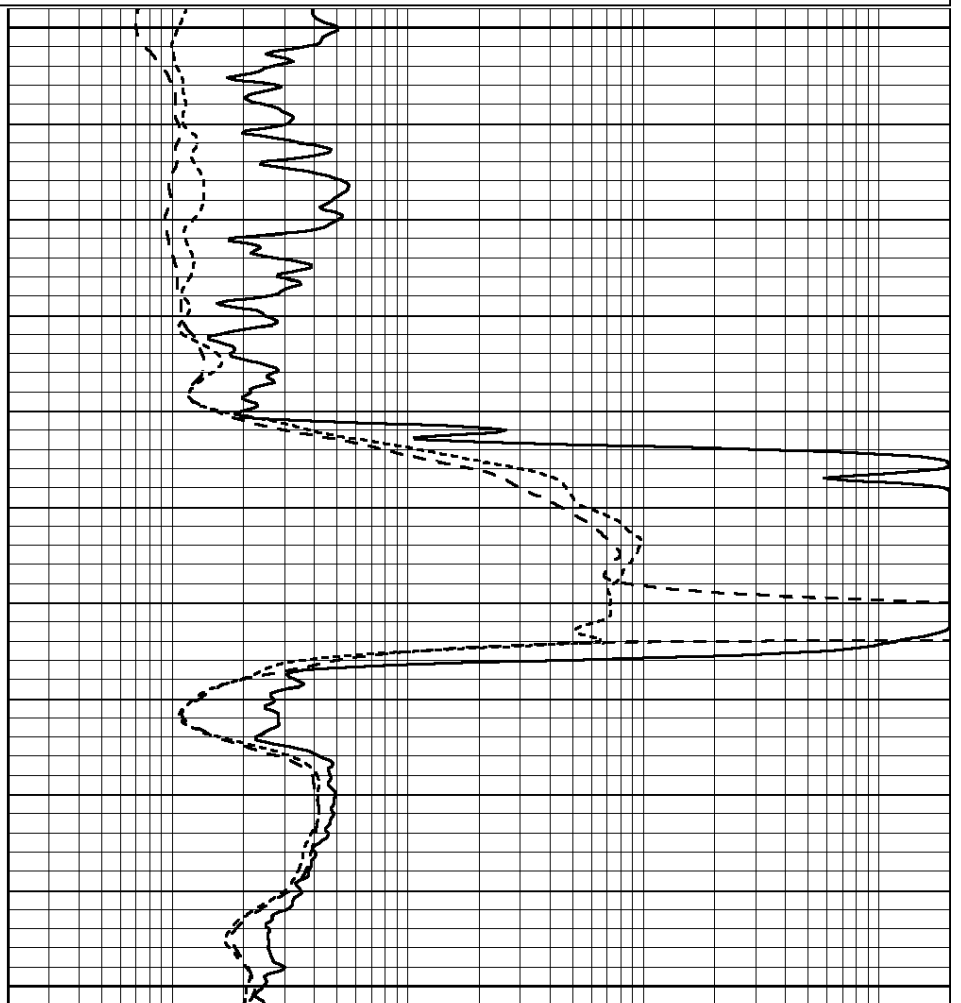
0	GAMMA RAY (GAPI)	150
-100	SP (mV)	100
-250	Rxo/Rt	50
0	MINMK	20

0.2	SHALLOW GUARD (Ohm-m)	2000
0.2	DEEP INDUCTION (Ohm-m)	2000
0.2	MEDIUM INDUCTION (Ohm-m)	2000



2250
2300
2350

0	GAMMA RAY (GAPI)	150
-100	SP (mV)	100
-250	Rxo/Rt	50
0	MINMK	20



0.2	SHALLOW GUARD (Ohm-m)	2000
0.2	DEEP INDUCTION (Ohm-m)	2000
0.2	MEDIUM INDUCTION (Ohm-m)	2000



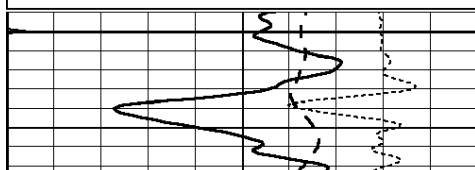
SUPERIOR
Hays,
Kansas

MAIN SECTION

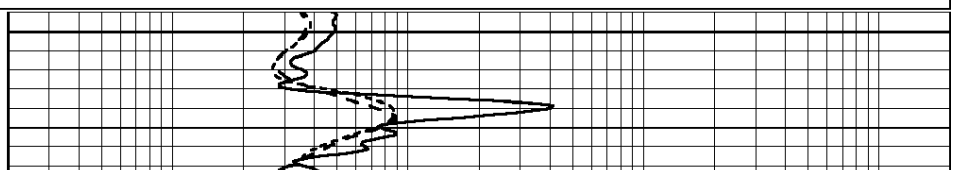
Database File: 409504pe.db
 Dataset Pathname: pass3.8
 Presentation Format: dil
 Dataset Creation: Sat Aug 18 08:38:50 2012 by Calc Open-Cased 110302
 Charted by: Depth in Feet scaled 1:240

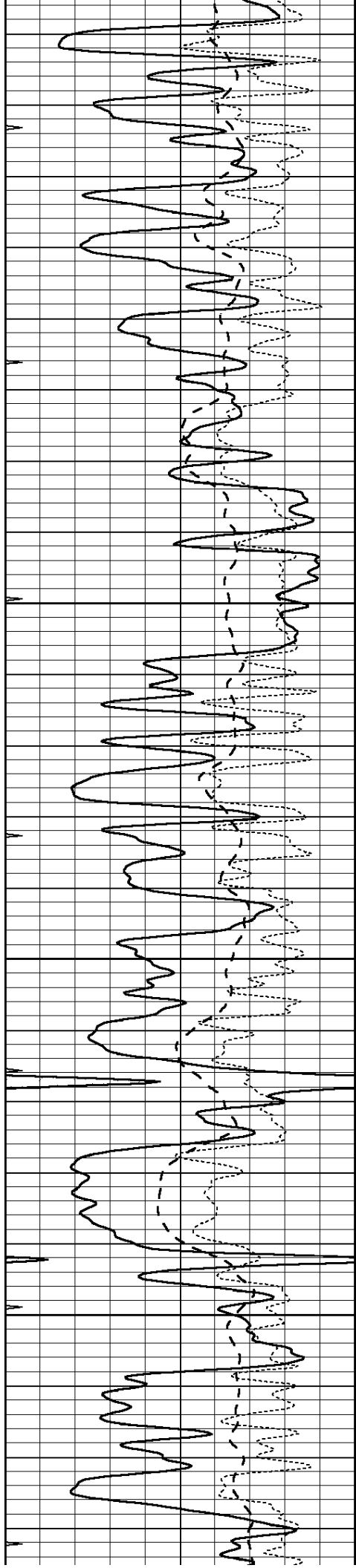
0	GAMMA RAY (GAPI)	150
-100	SP (mV)	100
-250	Rxo/Rt	50
0	MINMK	20

0.2	SHALLOW GUARD (Ohm-m)	2000
0.2	DEEP INDUCTION (Ohm-m)	2000
0.2	MEDIUM INDUCTION (Ohm-m)	2000



3400



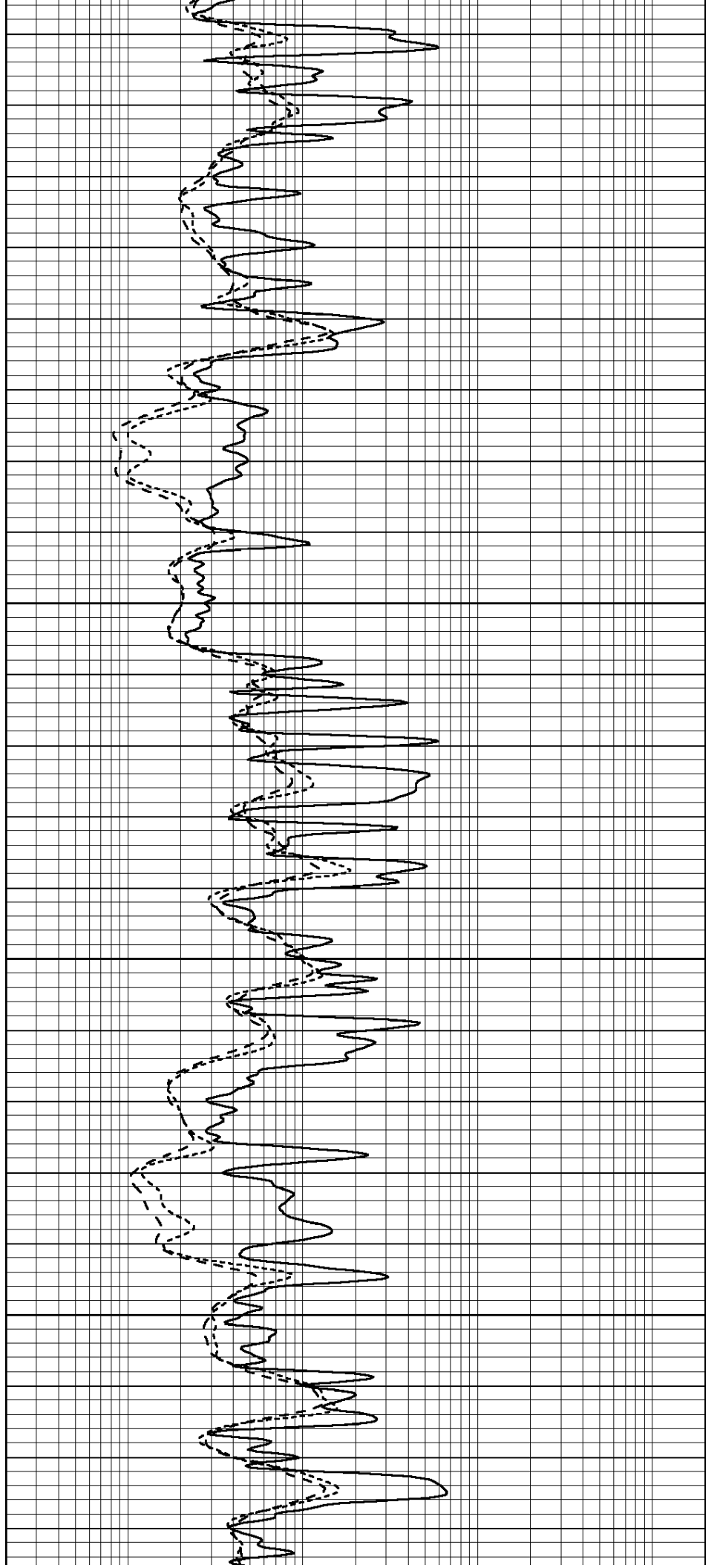


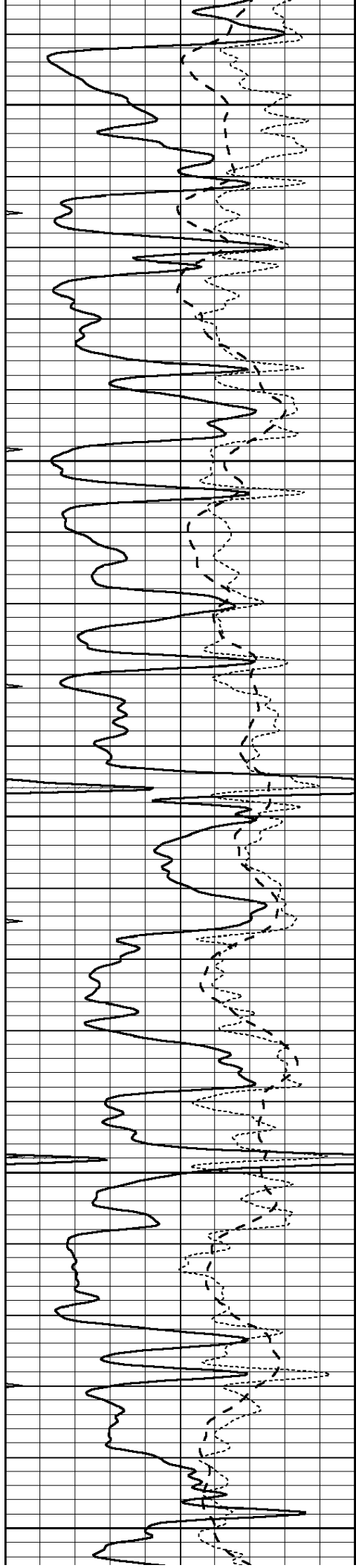
3450

3500

3550

3600





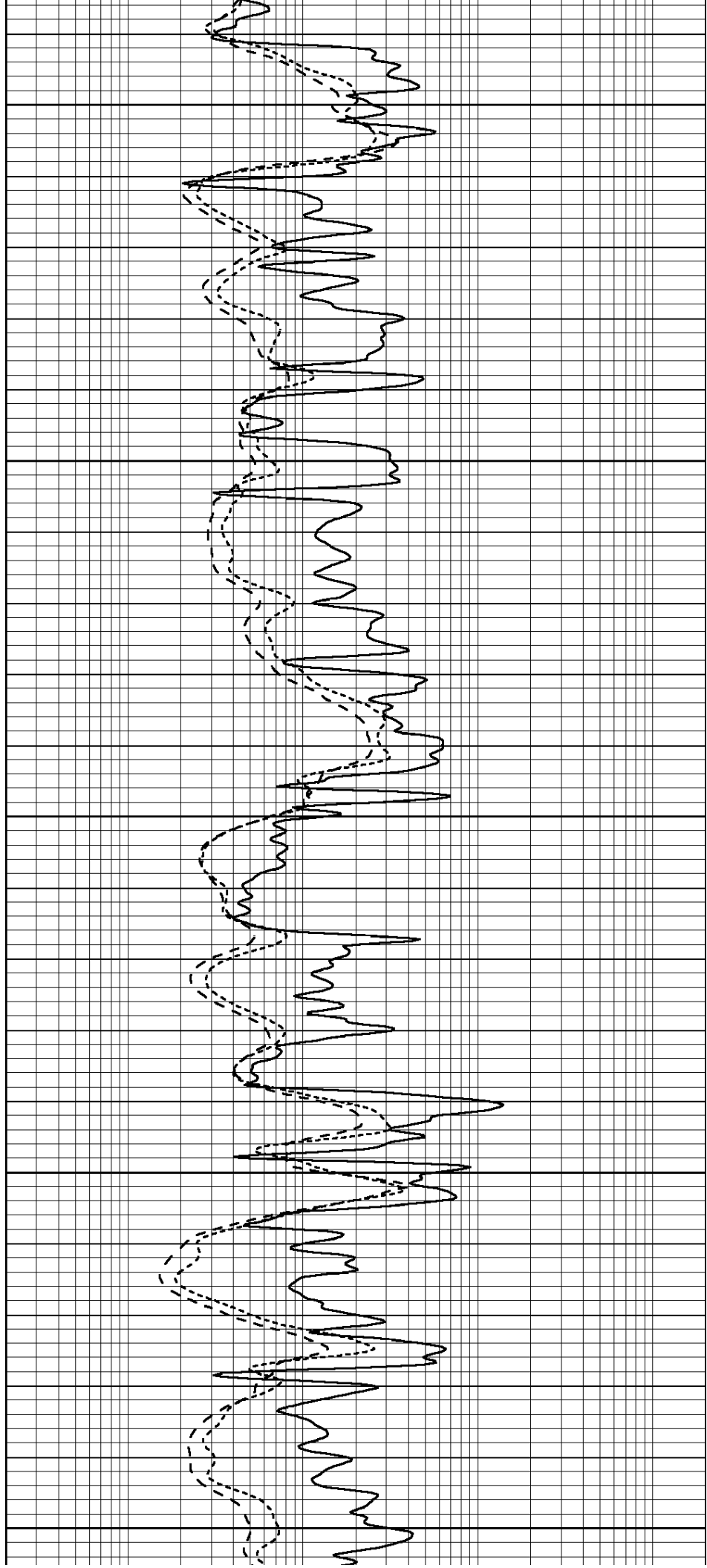
3650

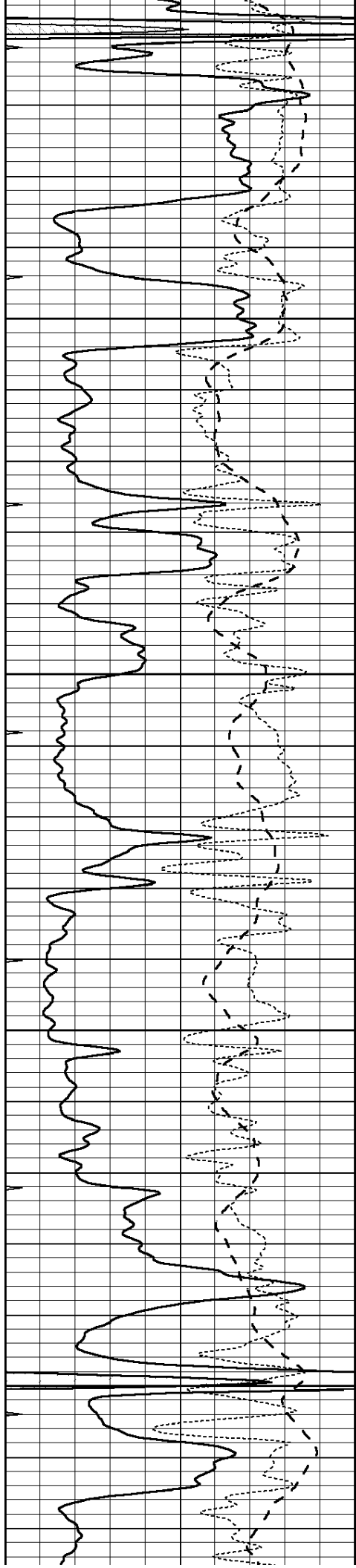
3700

3750

3800

3850



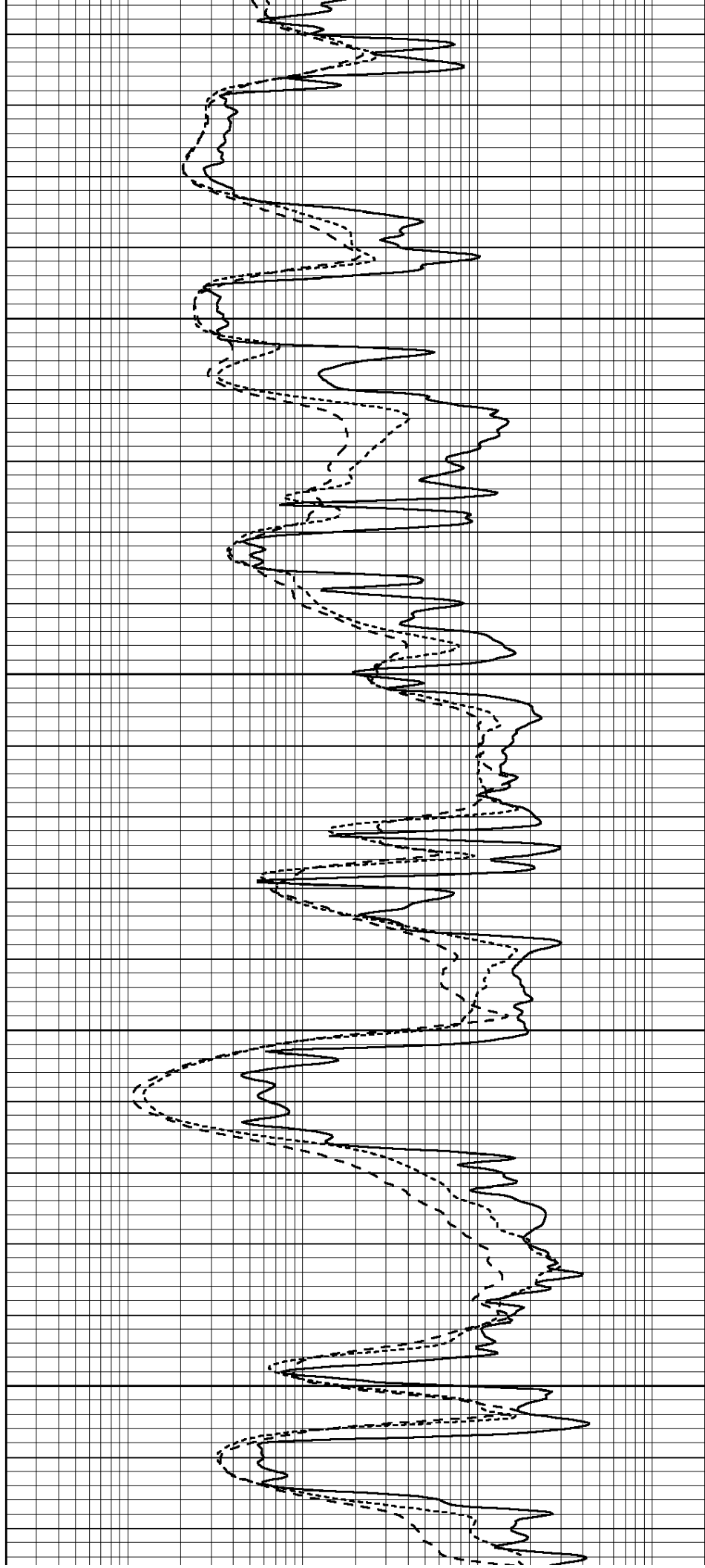


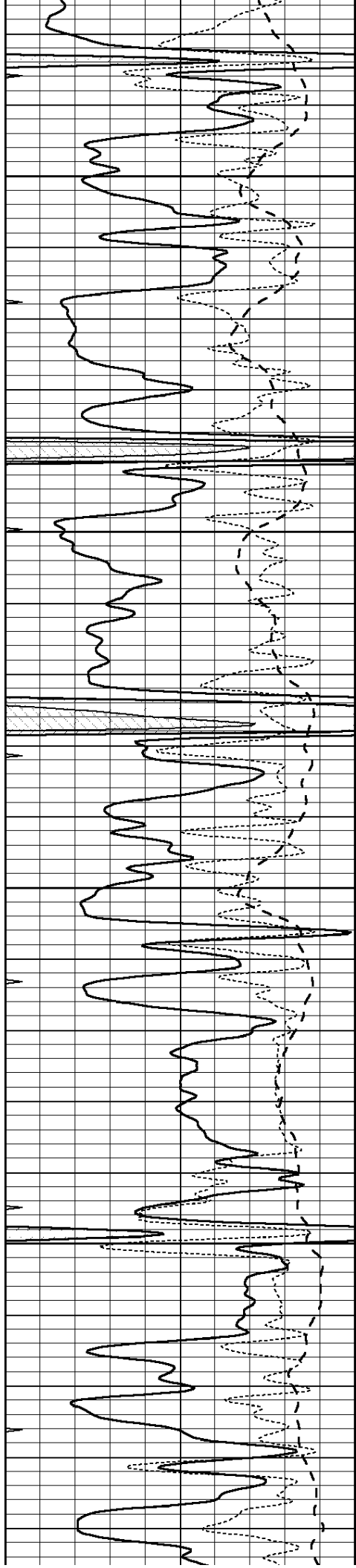
3900

3950

4000

4050



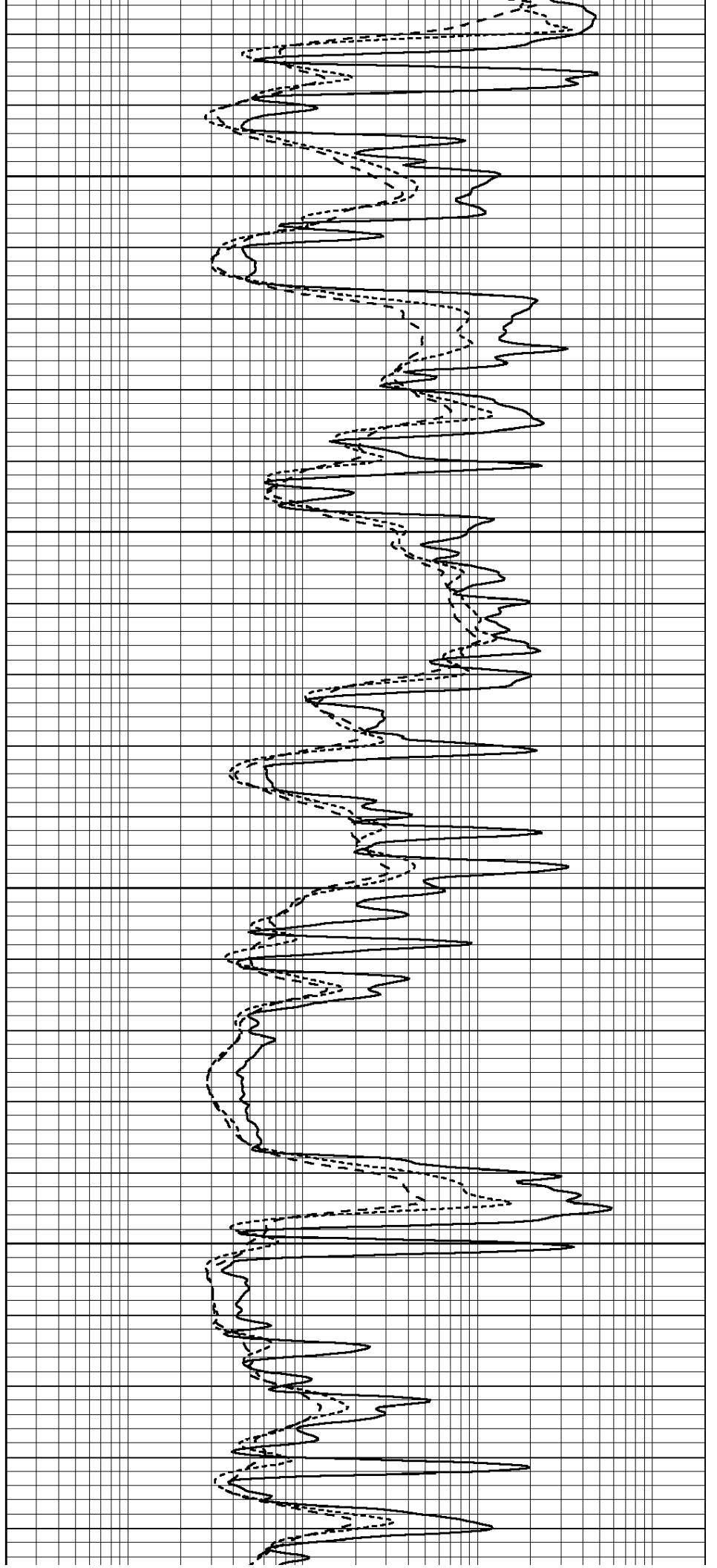


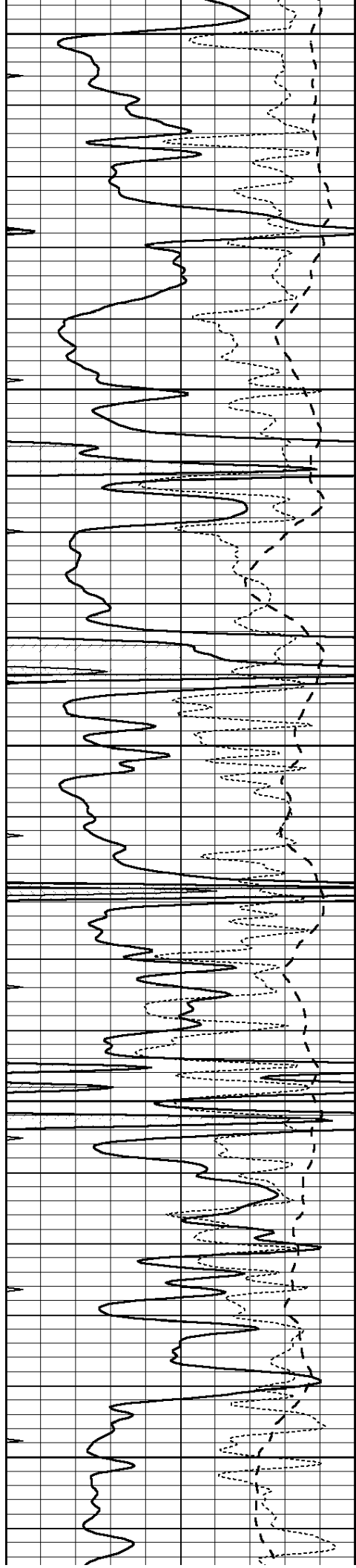
4100

4150

4200

4250





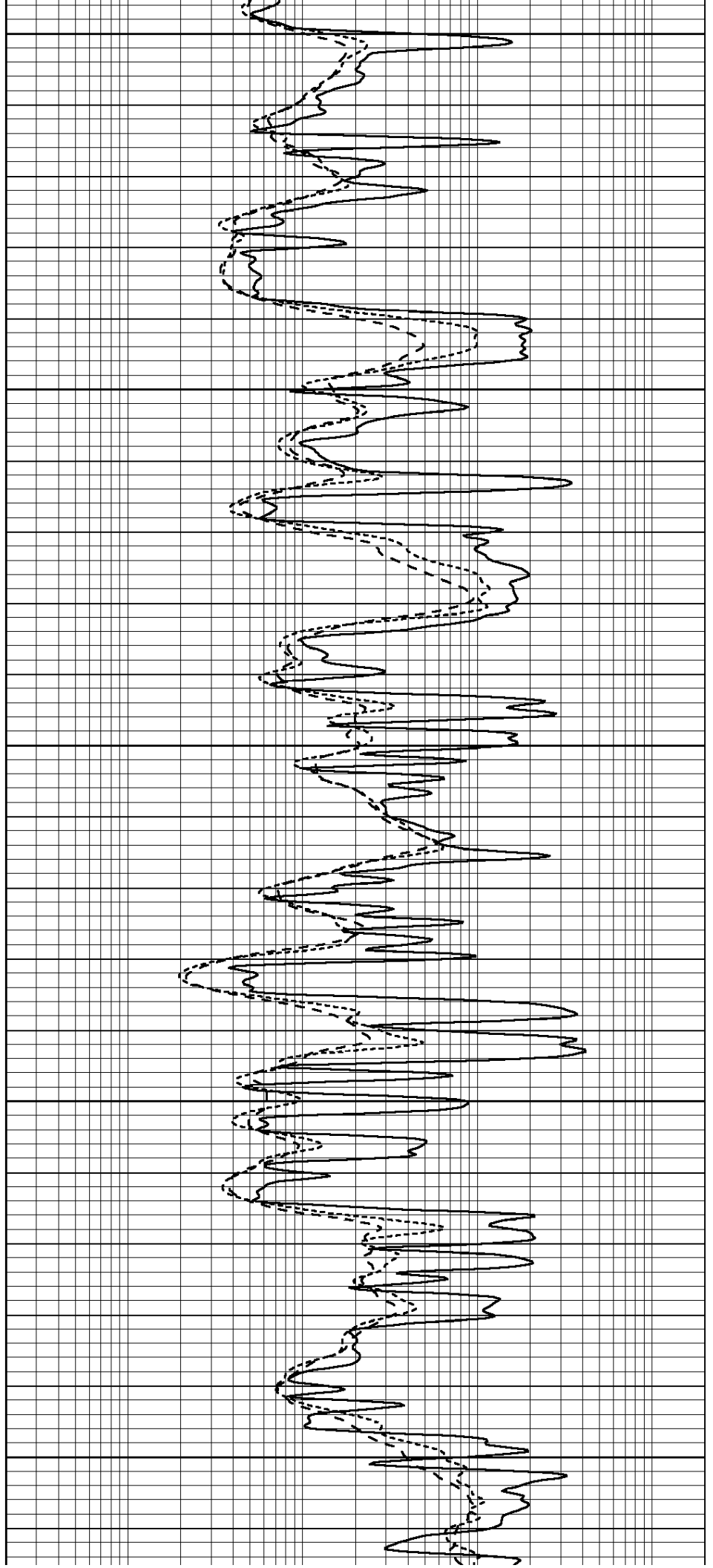
4300

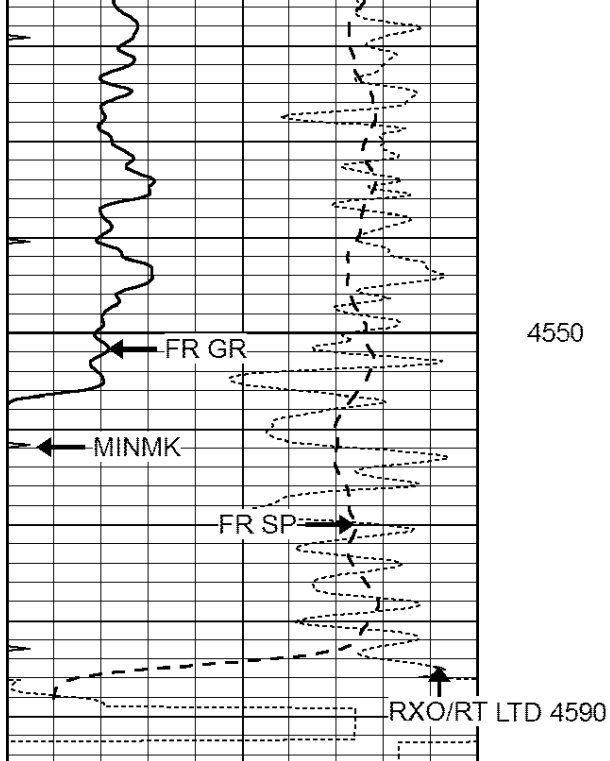
4350

4400

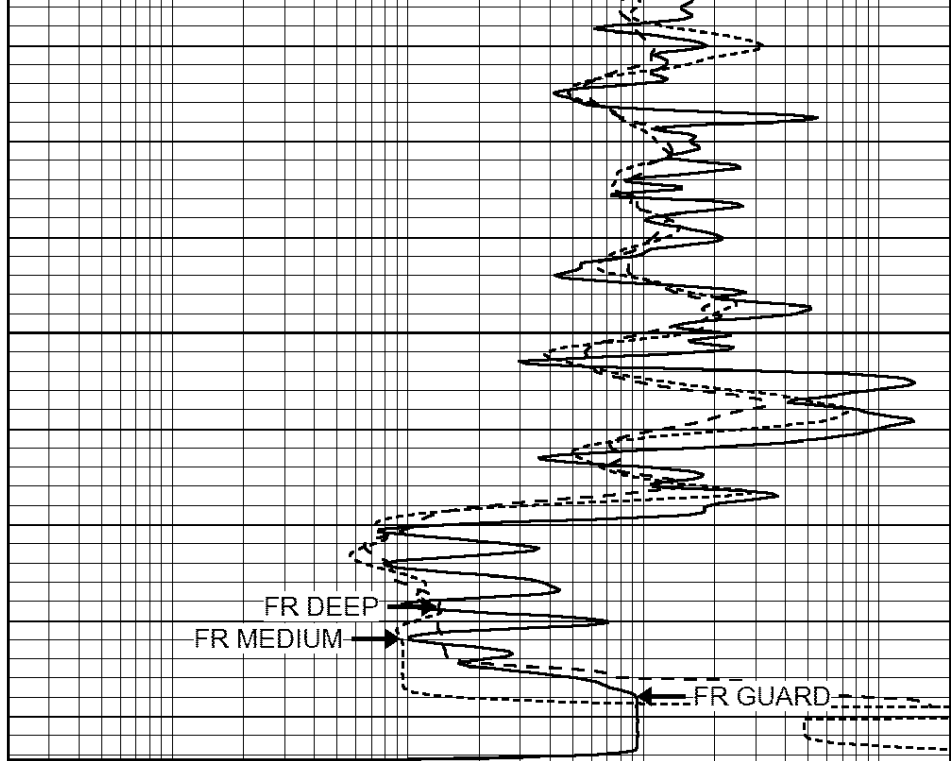
4450

4500





0	GAMMA RAY (GAPI)	150
-100	SP (mV)	100
-250	Rxo/Rt	50
0	MINMK	20



0.2	SHALLOW GUARD (Ohm-m)	2000
0.2	DEEP INDUCTION (Ohm-m)	2000
0.2	MEDIUM INDUCTION (Ohm-m)	2000



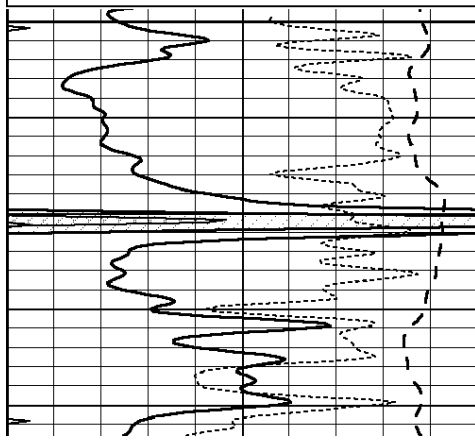
SUPERIOR
Hays,
Kansas

REPEAT SECTION

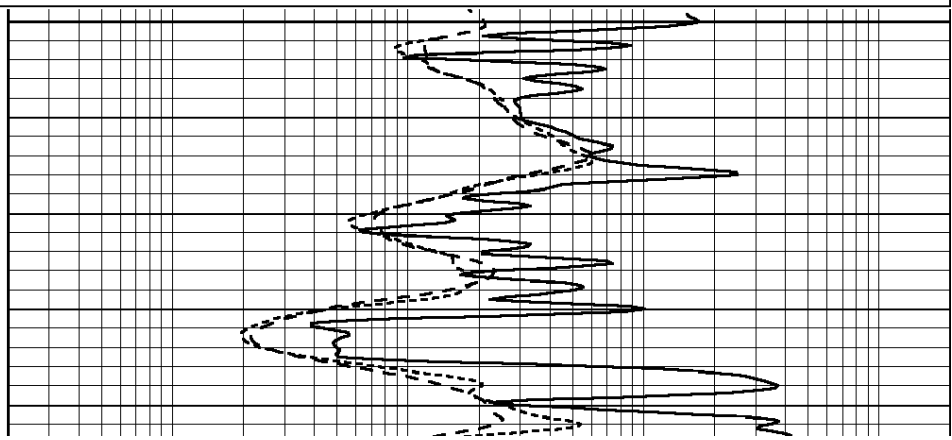
Database File: 409504pe.db
 Dataset Pathname: pass2.5
 Presentation Format: dil
 Dataset Creation: Sat Aug 18 07:39:30 2012 by Calc Open-Cased 110302
 Charted by: Depth in Feet scaled 1:240

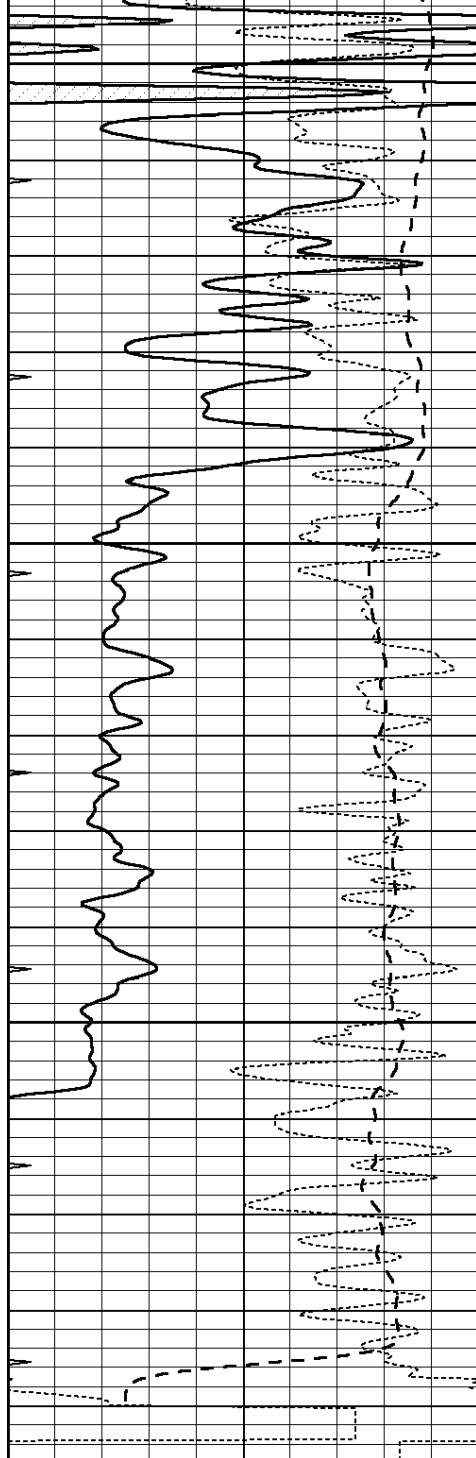
0	GAMMA RAY (GAPI)	150
-100	SP (mV)	100
-250	Rxo/Rt	50
0	MINMK	20

0.2	SHALLOW GUARD (Ohm-m)	2000
0.2	DEEP INDUCTION (Ohm-m)	2000
0.2	MEDIUM INDUCTION (Ohm-m)	2000



4400



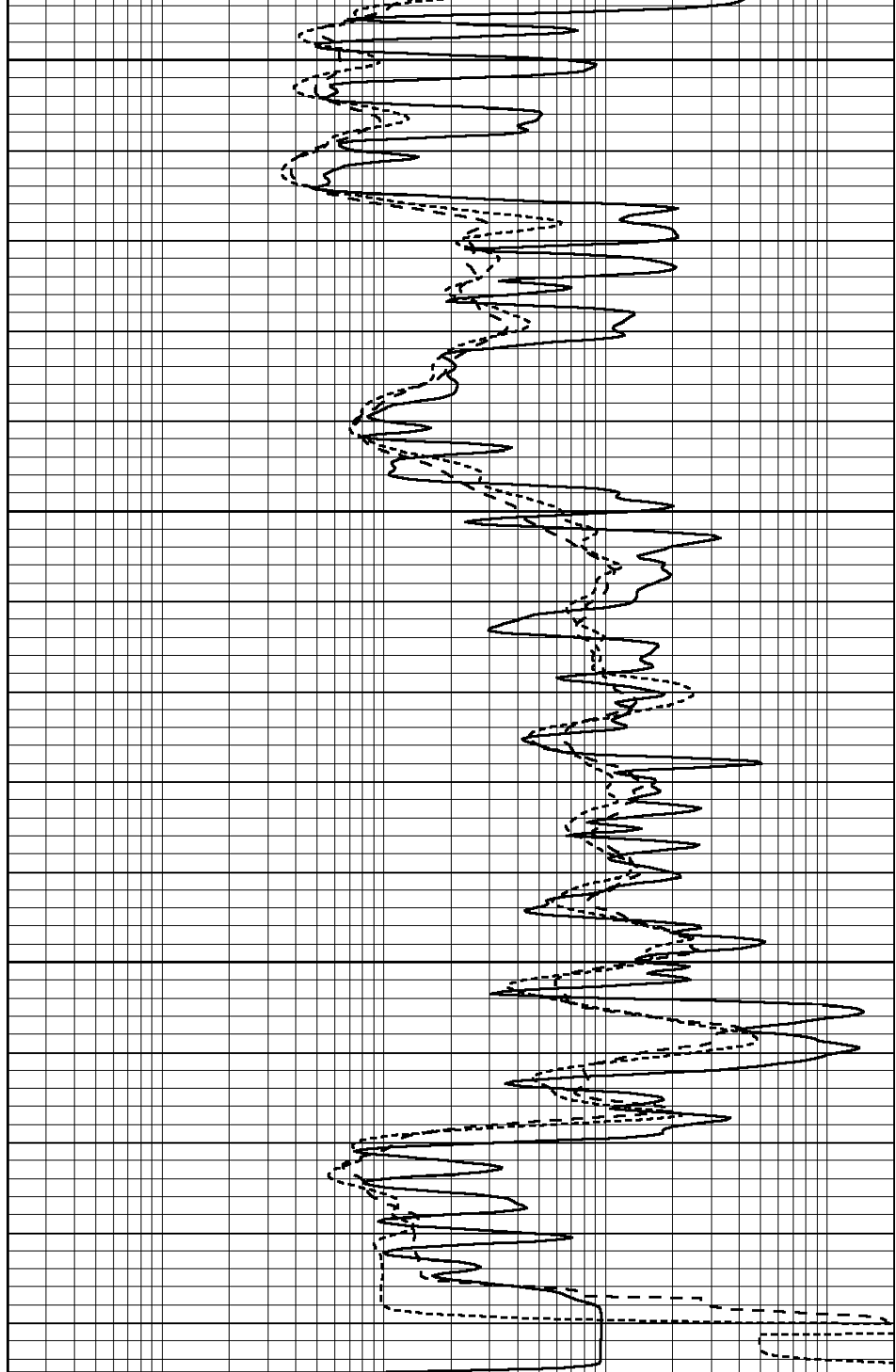


4450

4500

4550

0	GAMMA RAY (GAPI)	150
-100	SP (mV)	100
-250	Rxo/Rt	50
0	MINMK	20



0.2	SHALLOW GUARD (Ohm-m)	2000
0.2	DEEP INDUCTION (Ohm-m)	2000
0.2	MEDIUM INDUCTION (Ohm-m)	2000

Calibration Report

Database File: 409504pe.db
 Dataset Pathname: pass3.8
 Dataset Creation: Sat Aug 18 08:38:50 2012 by Calc Open-Cased 110302

Dual Induction Calibration Report

Serial-Model: DIL3-GEAR
 Performed: Sat Aug 18 07:19:20 2012

Readings

References

Results

Loop:	Readings			References			Results	
	Air	Loop		Air	Loop		m	b
Deep	0.011	0.656	V	0.000	400.000	mmho/m	640.000	10.000
Medium	0.013	0.740	V	0.000	462.500	mmho/m	700.000	-5.000
Internal:	Zero	Cal		Zero	Cal		m	b
Deep	0.002	0.645	V	0.000	400.000	mmho/m	622.059	-1.071
Medium	0.007	0.740	V	0.000	462.500	mmho/m	631.393	-4.555

Litho Density Calibration Report
 Serial: 006 Model: PRB
 Performed Sun Aug 15 09:48:41 2010

Litho Density Calibration

	Background	Magnesium	Aluminum	Sandstone	
Window 1	1686.6	11612.8	3932.0	12718.8	cps
Window 2	1531.4	9204.7	3267.8	9851.9	cps
Window 3	1198.3	4733.6	1952.5	4920.6	cps
Window 4	317.3	321.2	325.9	303.6	cps
Long Space	0.0	7673.3	1736.4	8320.4	cps
Short Space	1.7	2548.5	1657.2	2628.8	cps
Rho		1.7100	2.5900	1.3800	g/cc
Pe			2.5700	1.5500	
Rib Angle	: 43.8	Rib Slope	: 0.961	Density/Spine Ratio	: 0.569
Spine Angle	: 73.8	Spine Slope	: 3.453	Spine Intercept	: -18.1

Caliper

	Readings	Reference
Low Ref	3.5	7.6
High Ref	5.5	15.0
Gain:	3.8	Offset: -5.9

Compensated Neutron Calibration Report

Serial Number: 070808
 Tool Model: Probe

PRE-SURVEY VERIFICATION

Detector	Readings	Measured	Target
Short Space	cps		
Long Space	cps	pu	pu

POST-SURVEY VERIFICATION

Detector	Readings	Measured	Target
Short Space	cps		
Long Space	cps	pu	pu

Gamma Ray Calibration Report

Serial Number:	070559
Tool Model:	OPEN_GR
Performed:	Thu Jul 26 17:34:29 2012
Calibrator Value:	1.0 GAPI
Background Reading:	0.0 cps
Calibrator Reading:	1.0 cps
Sensitivity:	0.3000 GAPI/cps

