



Pioneer Energy Services

Microresistivity Log

API No.	15-015-23,959-00-00	
Company	Vess Oil Corporation	
Well	Wilson "A" No. 445	
Field	El Dorado	
County	Butler	State
Location	1500' FNL & 2310' FWL	
	Sec: 9	Twp: 25 S Rge: 5 E
Permanent Datum	Ground Level	Elevation 1357
Log Measured From	Kelly Bushing	6 Ft. Above Perm. Datum
Drilling Measured From	Kelly Bushing	K.B. 1363 D.F. 1357 G.L. 1357
		Other Services CNL/CDL DIL

Date	11/07/2012
Run Number	Three
Depth Driller	2495
Depth Logger	2494
Bottom Logged Interval	2492
Top Log Interval	250
Casing Driller	8.625 @ 253
Casing Logger	259
Bit Size	7.875
Type Fluid in Hole	Chemical
Salinity, ppm CL	800
Density / Viscosity	9.4 52
pH / Fluid Loss	9.5 8.2
Source of Sample	Flowline
Rm @ Meas. Temp	.90 @ 63
Rmf @ Meas. Temp	.68 @ 63
Rmc @ Meas. Temp	1.22 @ 63
Source of Rmf / Rmc	Charts
Rm @ BHT	.56 @ 101
Operating Rig Time	5 Hours
Max Rec. Temp. F	101
Equipment Number	108
Location	Hays
Recorded By	D. Martin
Witnessed By	Roger Martin

<<< Fold Here >>>

All interpretations are opinions based on inferences from electrical or other measurements and we cannot and do not guarantee the accuracy or correctness of any interpretation, and we shall not, except in the case of gross or willful negligence on our part, be liable or responsible for any loss, costs, damages, or expenses incurred or sustained by anyone resulting from any interpretation made by any of our officers, agents or employees. These interpretations are also subject to our general terms and conditions set out in our current Price Schedule.

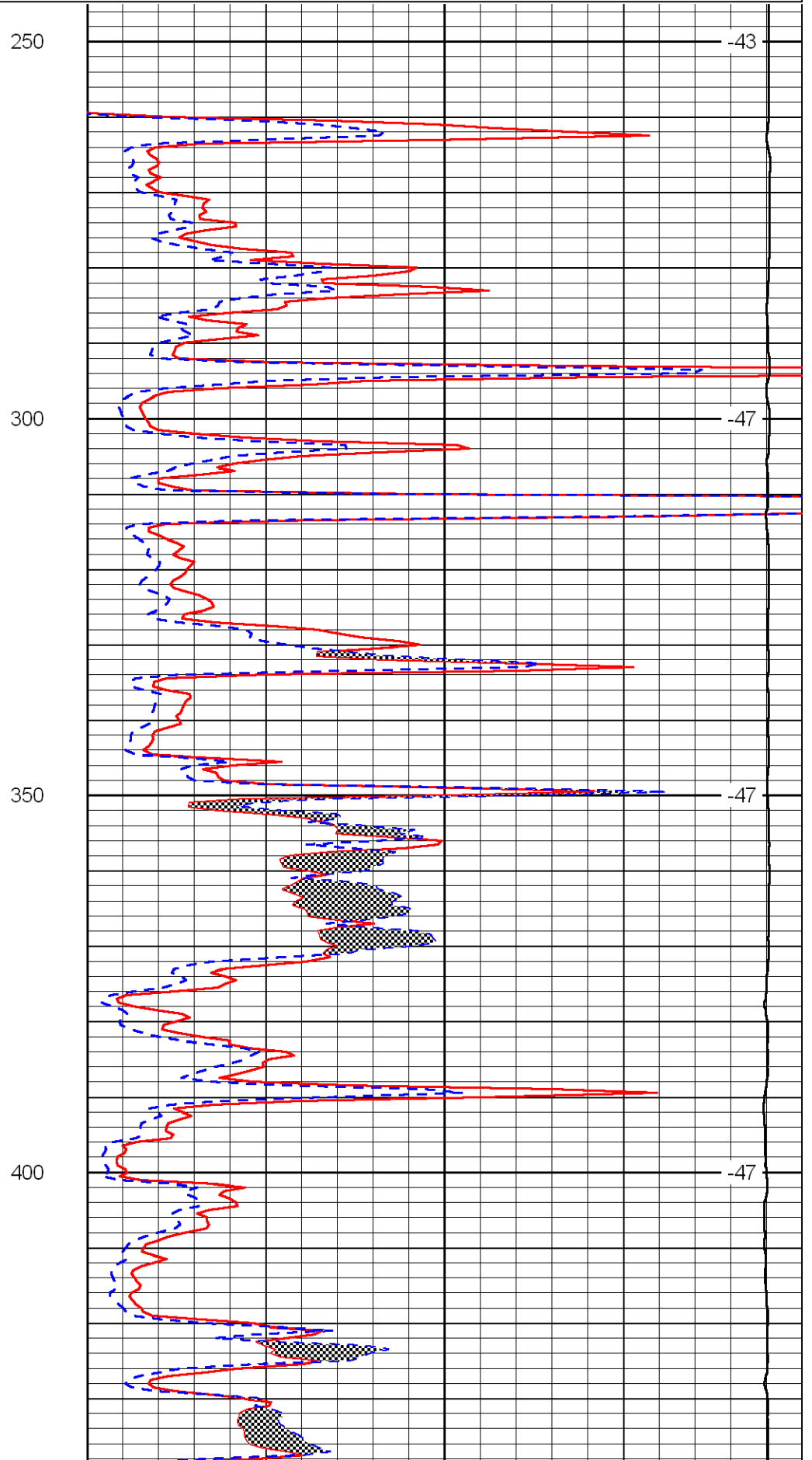
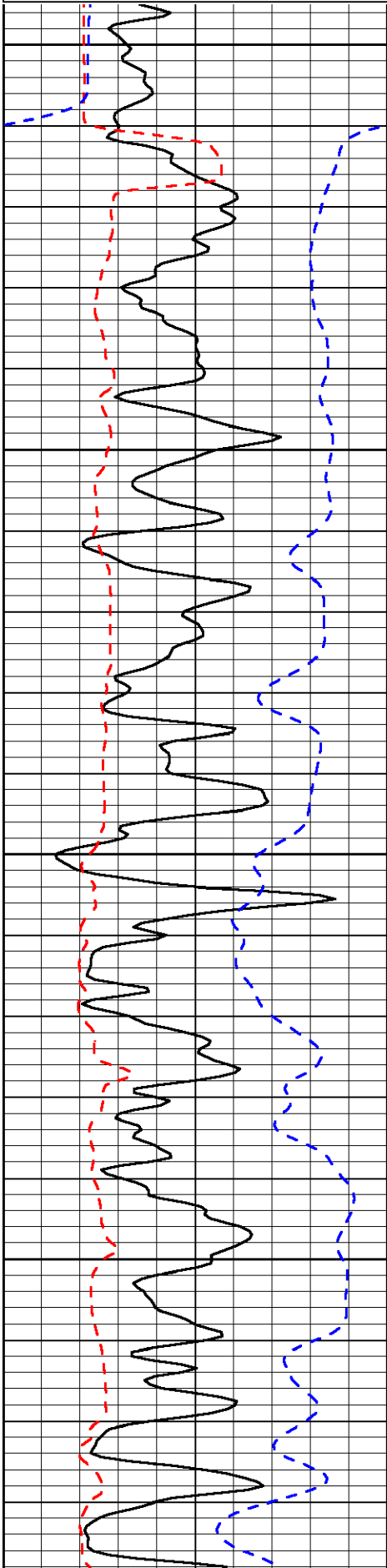
Comments

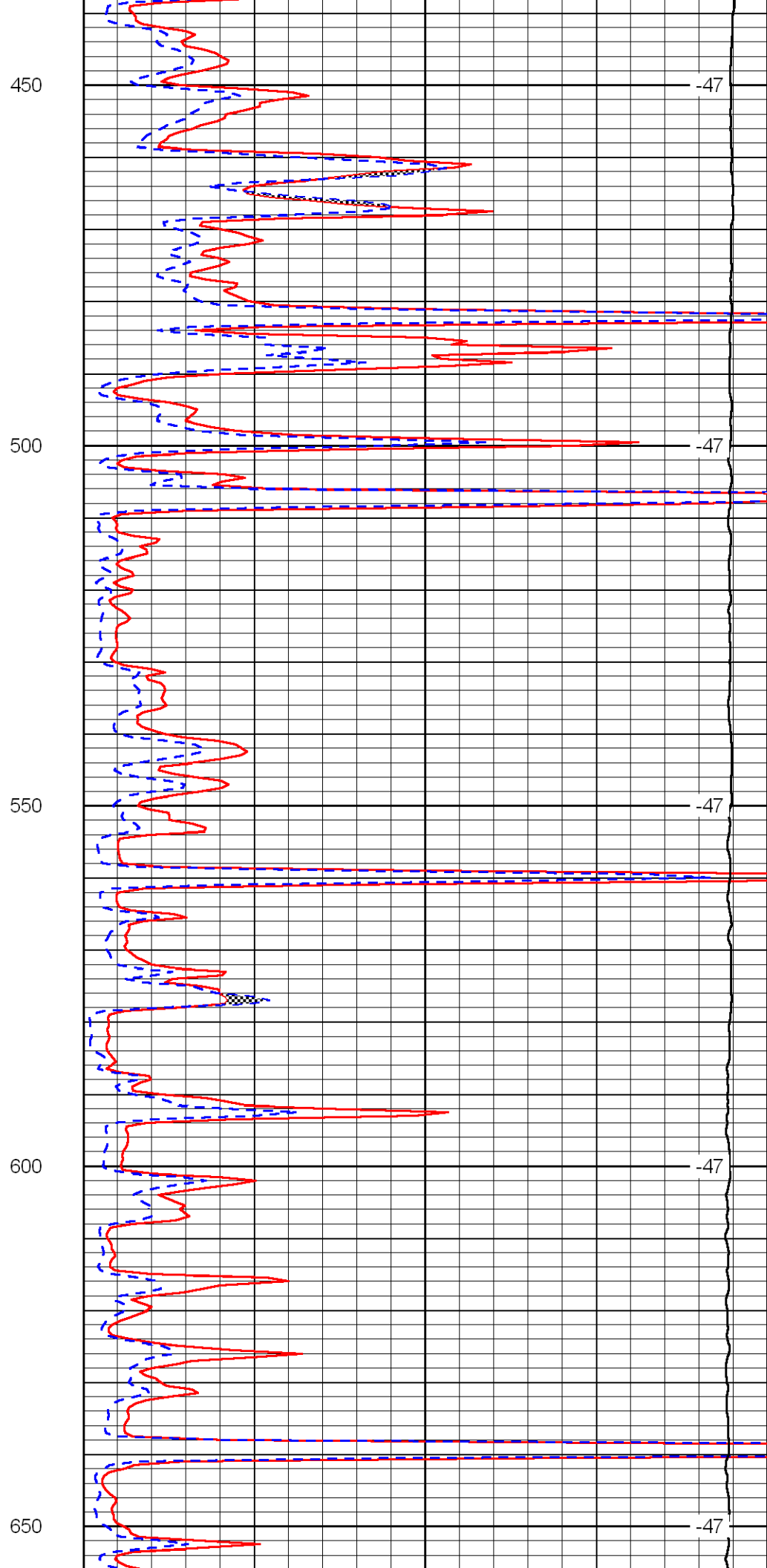
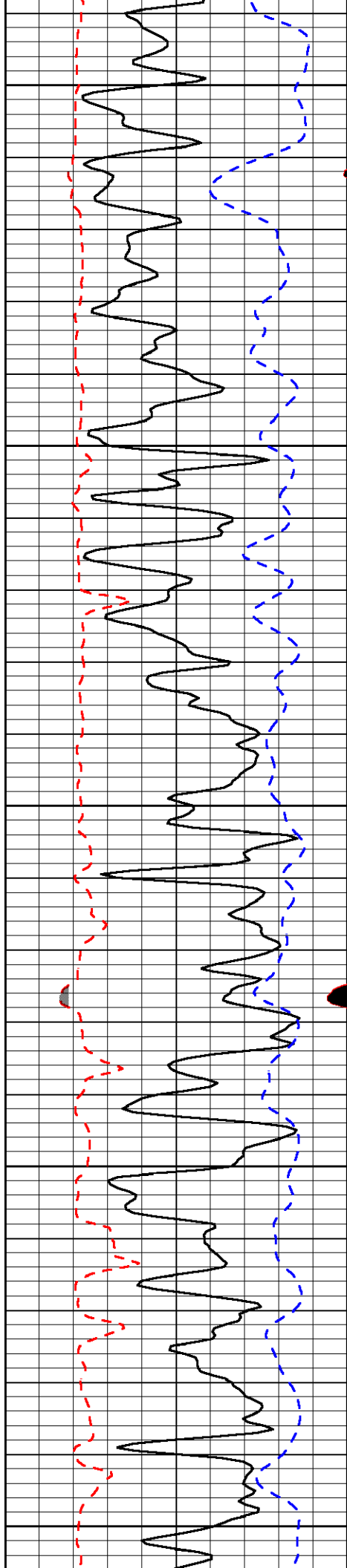
Thank you for using Log-Tech, Inc.
 (785) 625-3858
 Potwin, KS,
 6 E on 196 Hwy to 40 Rd.,
 2 E, 1/4 N, E Into

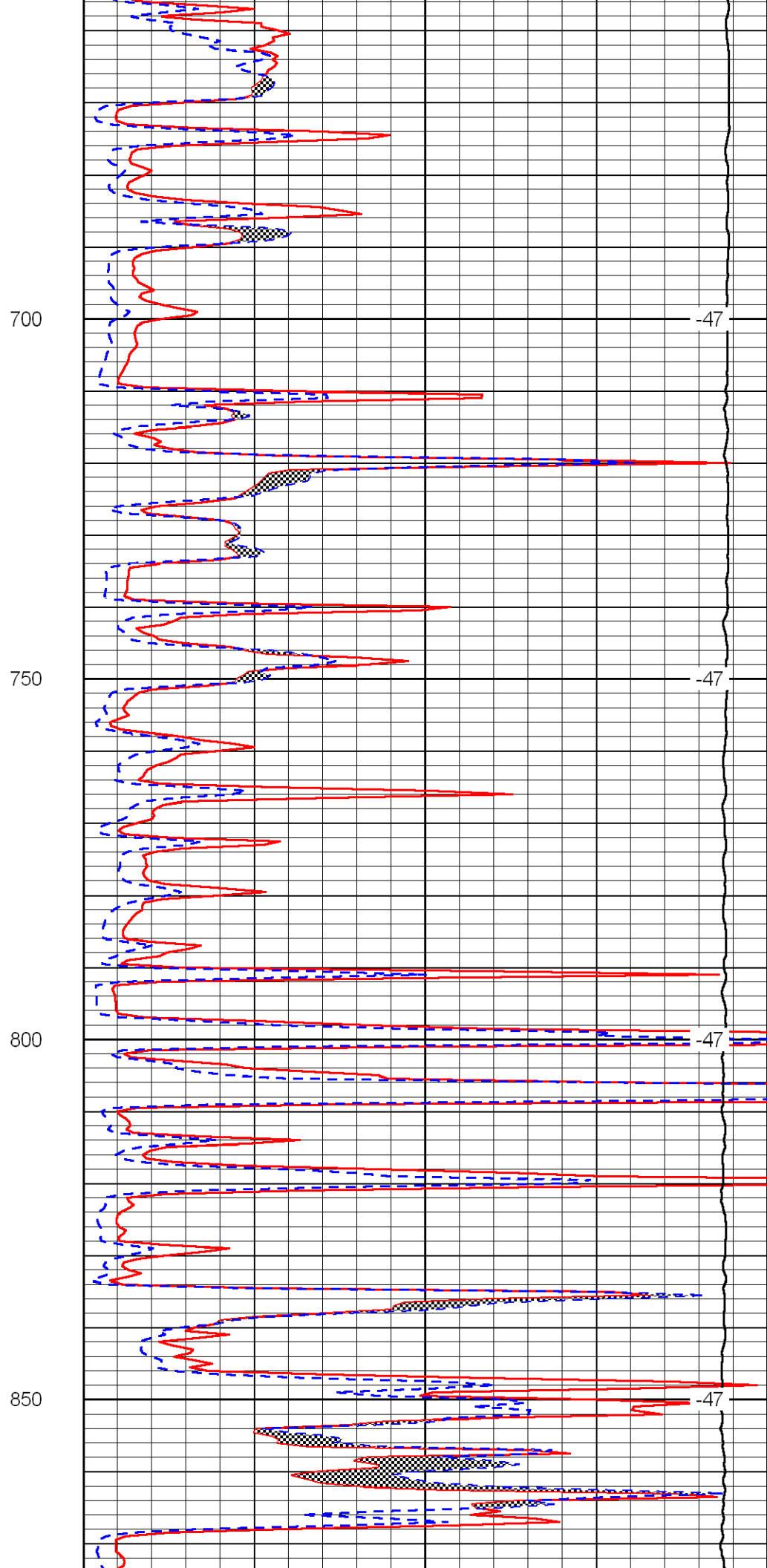
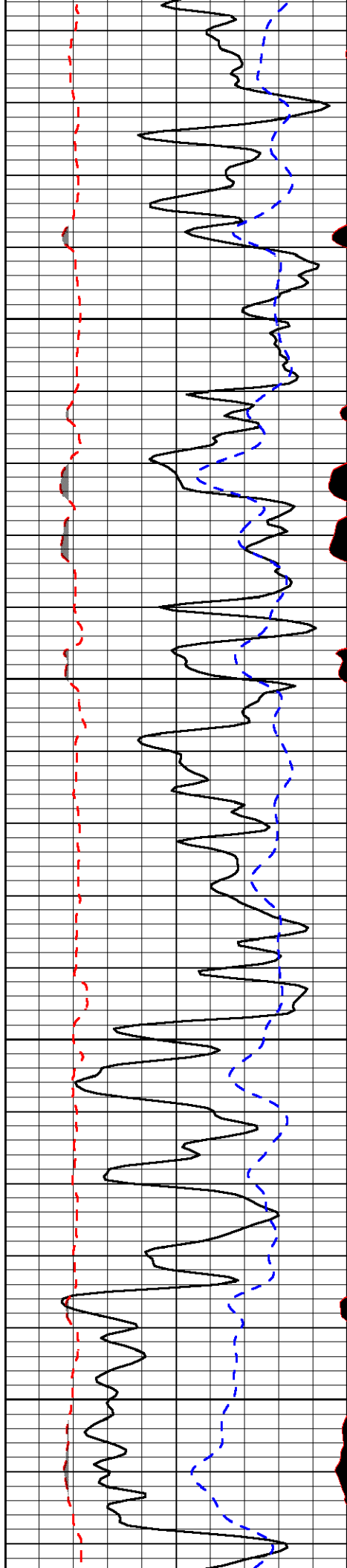
Database File: vesshd.db
 Dataset Pathname: dil/vessstk
 Presentation Format: micro
 Dataset Creation: Thu Nov 08 00:56:42 2012
 Charted by: Depth in Feet scaled 1:240

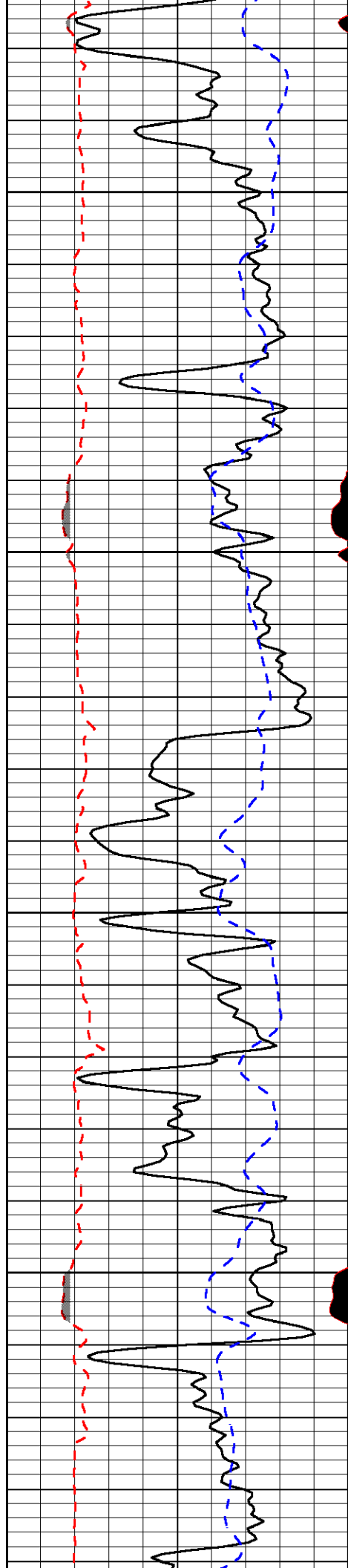
0	Gamma Ray	150
6	MCAL (GAPI)	16
2.875	Mud Cake (GAPI)	7.875
-200	SP	0

0	Micro Inverse 1 X 1	40
0	Micro Normal 2"	40
10000	Line Weight	0
		LSPD







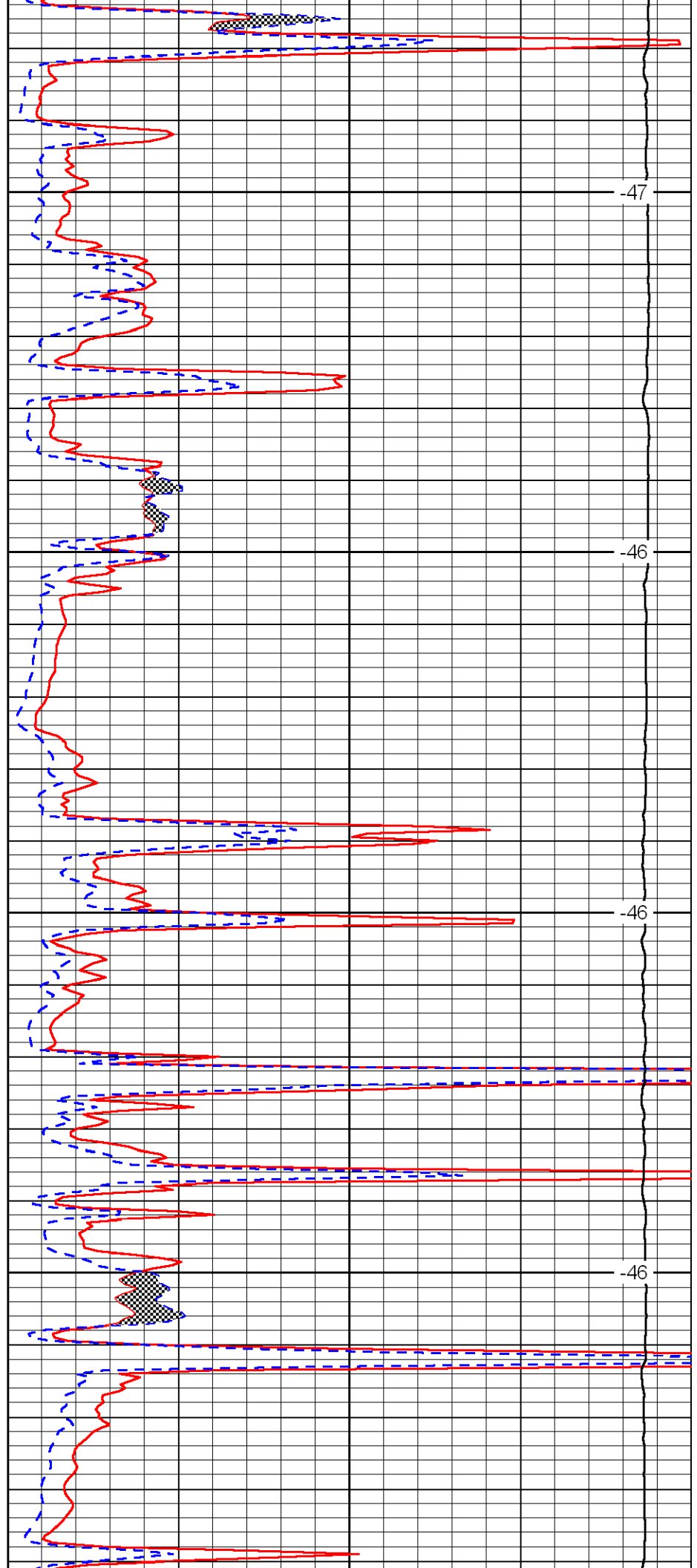


900

950

1000

1050

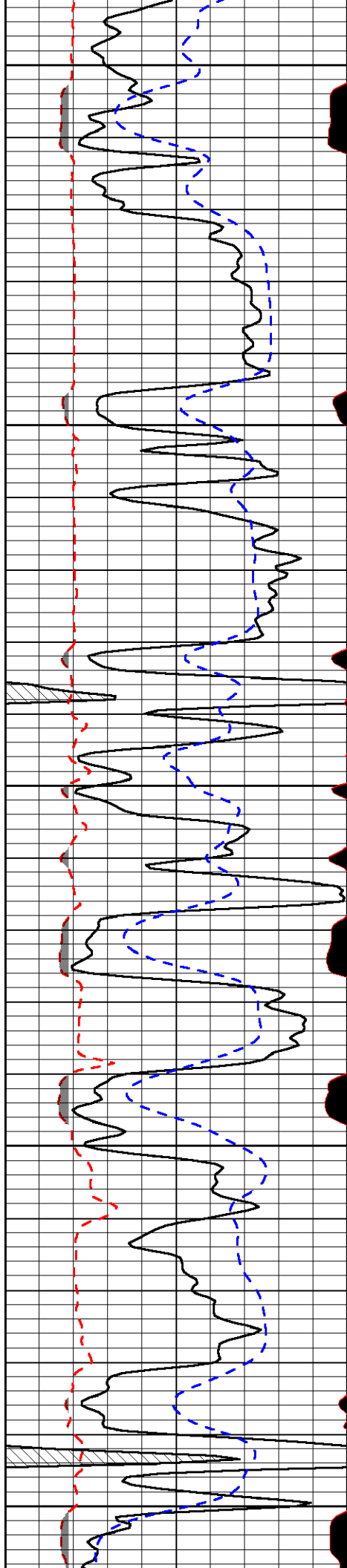


-47

-46

-46

-46



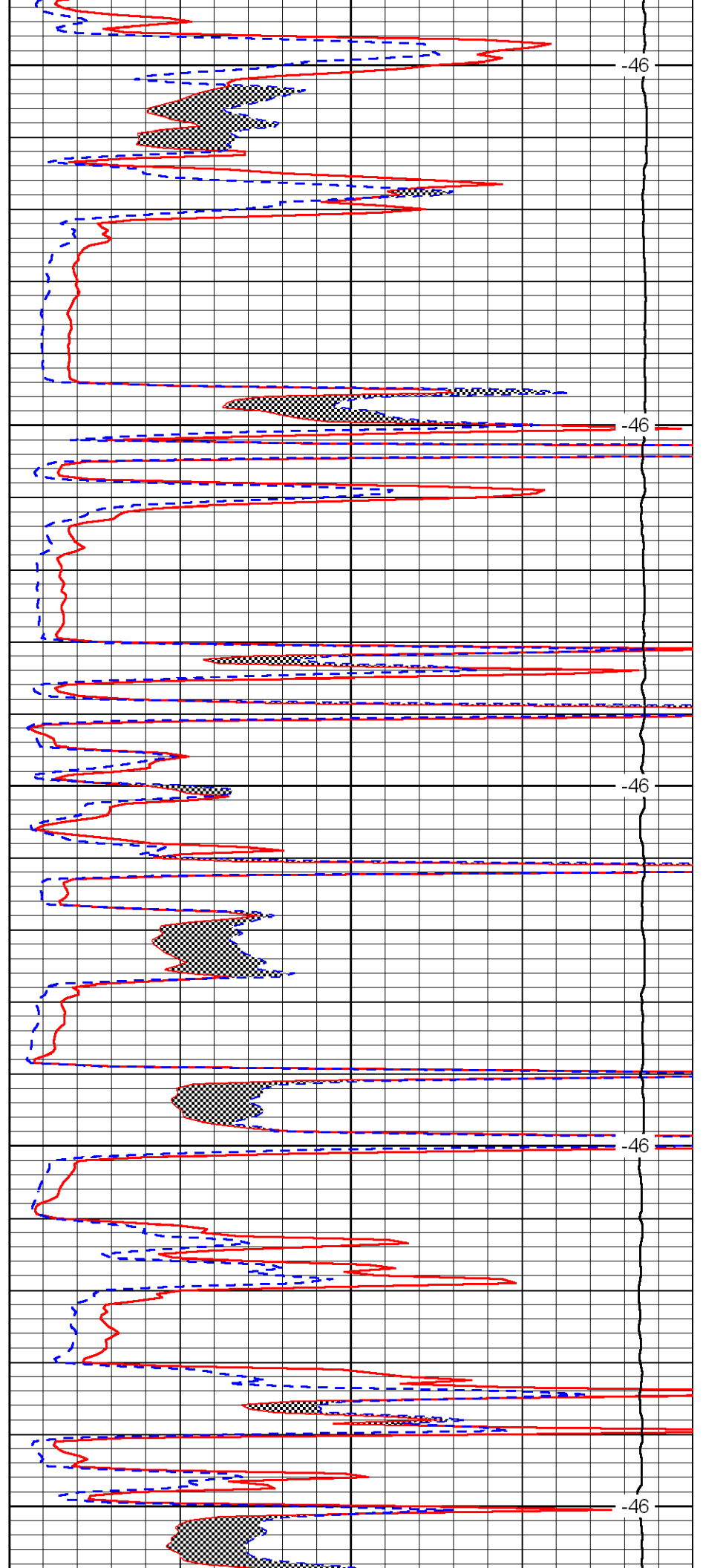
1100

1150

1200

1250

1300



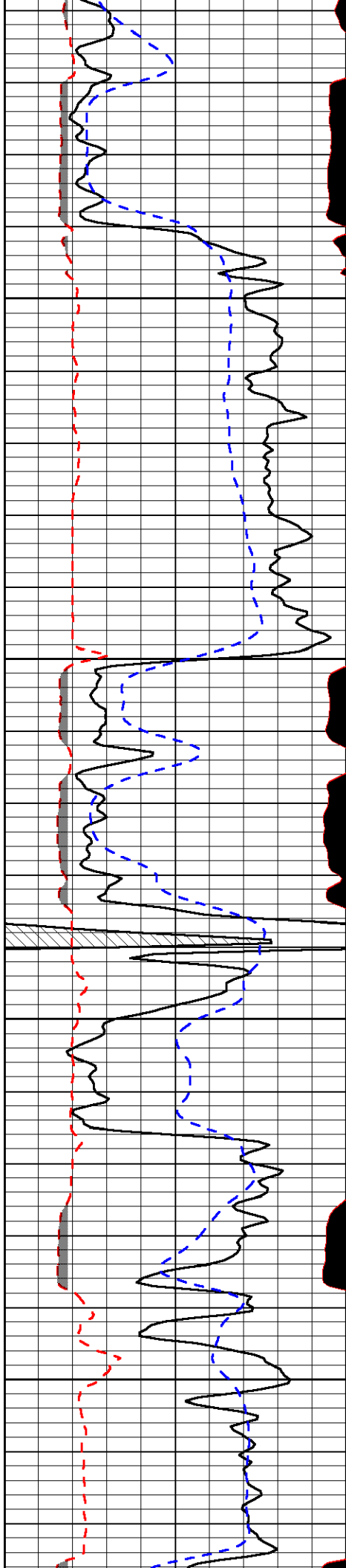
-46

-46

-46

-46

-46

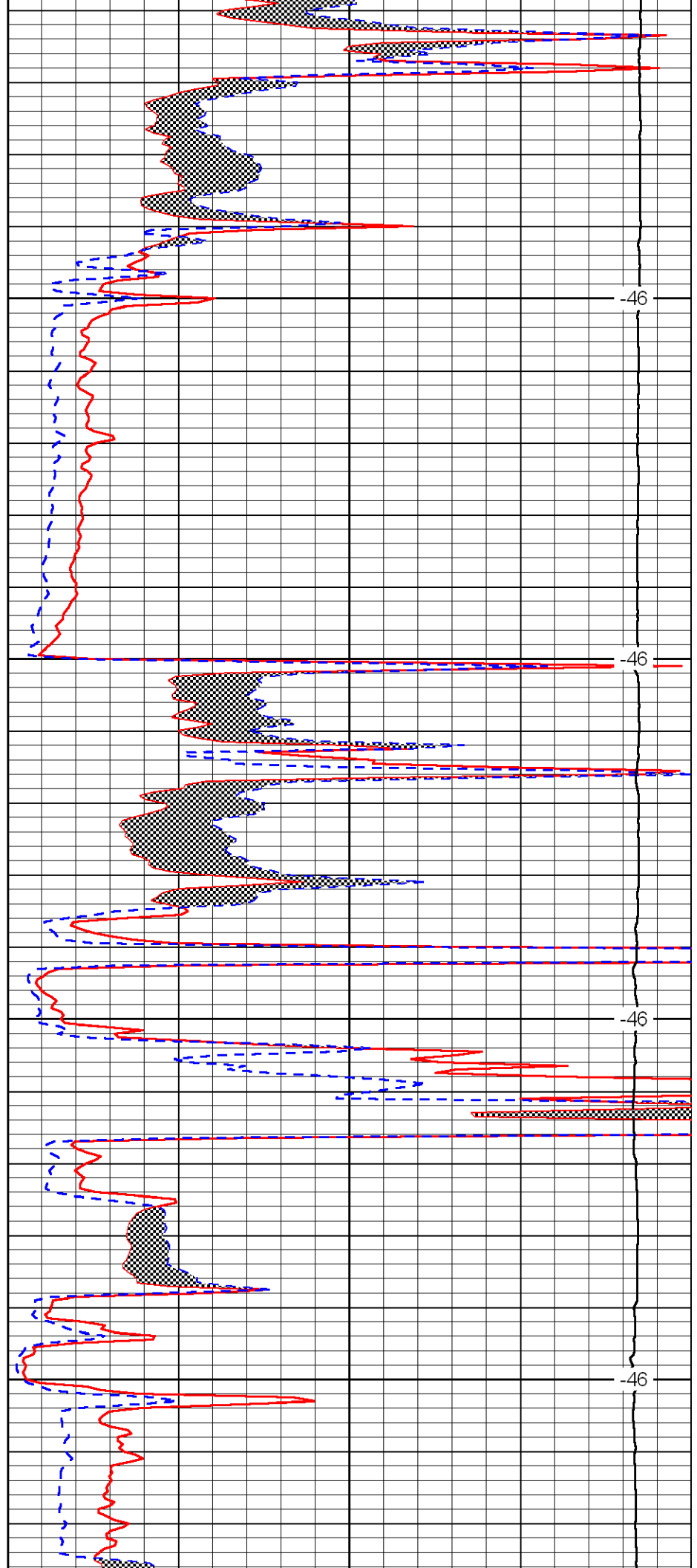


1350

1400

1450

1500

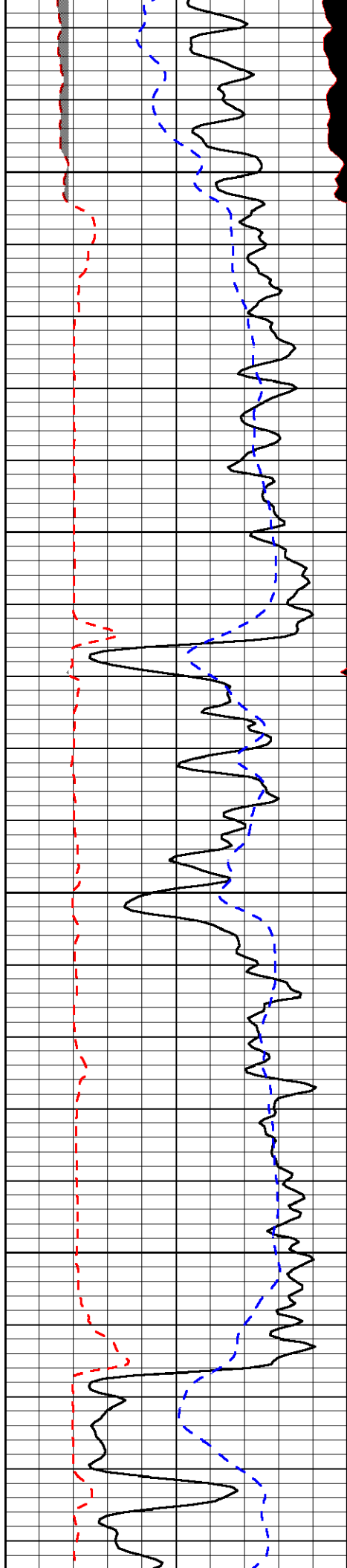


-46

-46

-46

-46

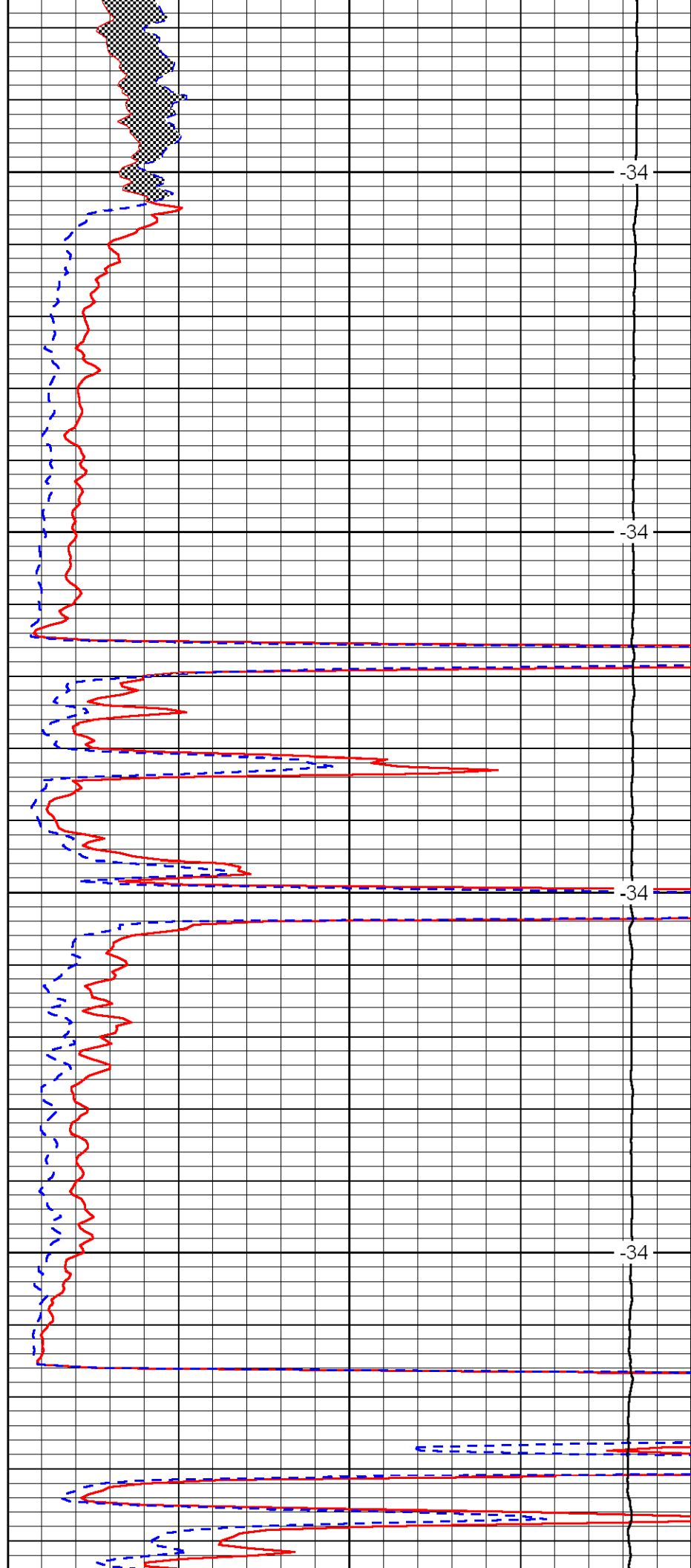


1550

1600

1650

1700

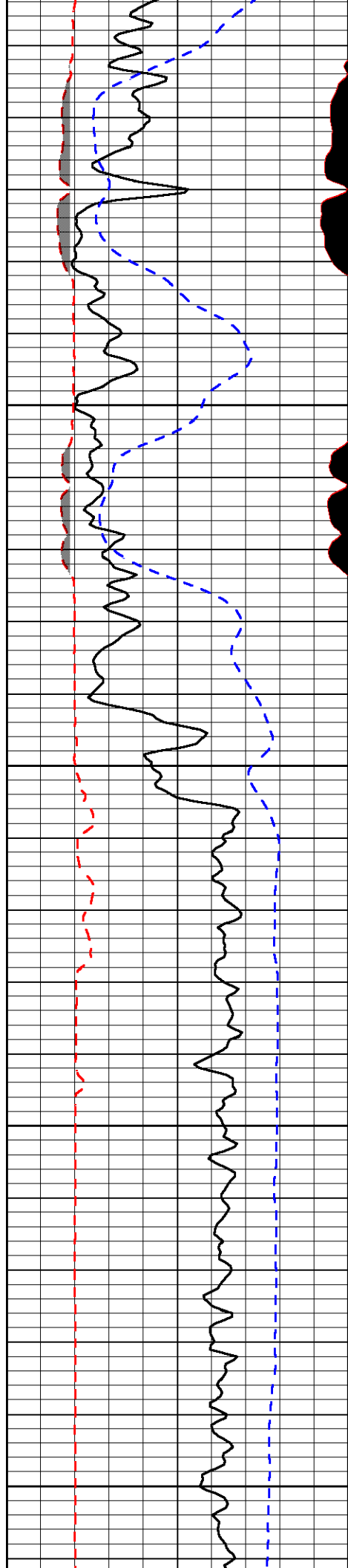


-34

-34

-34

-34



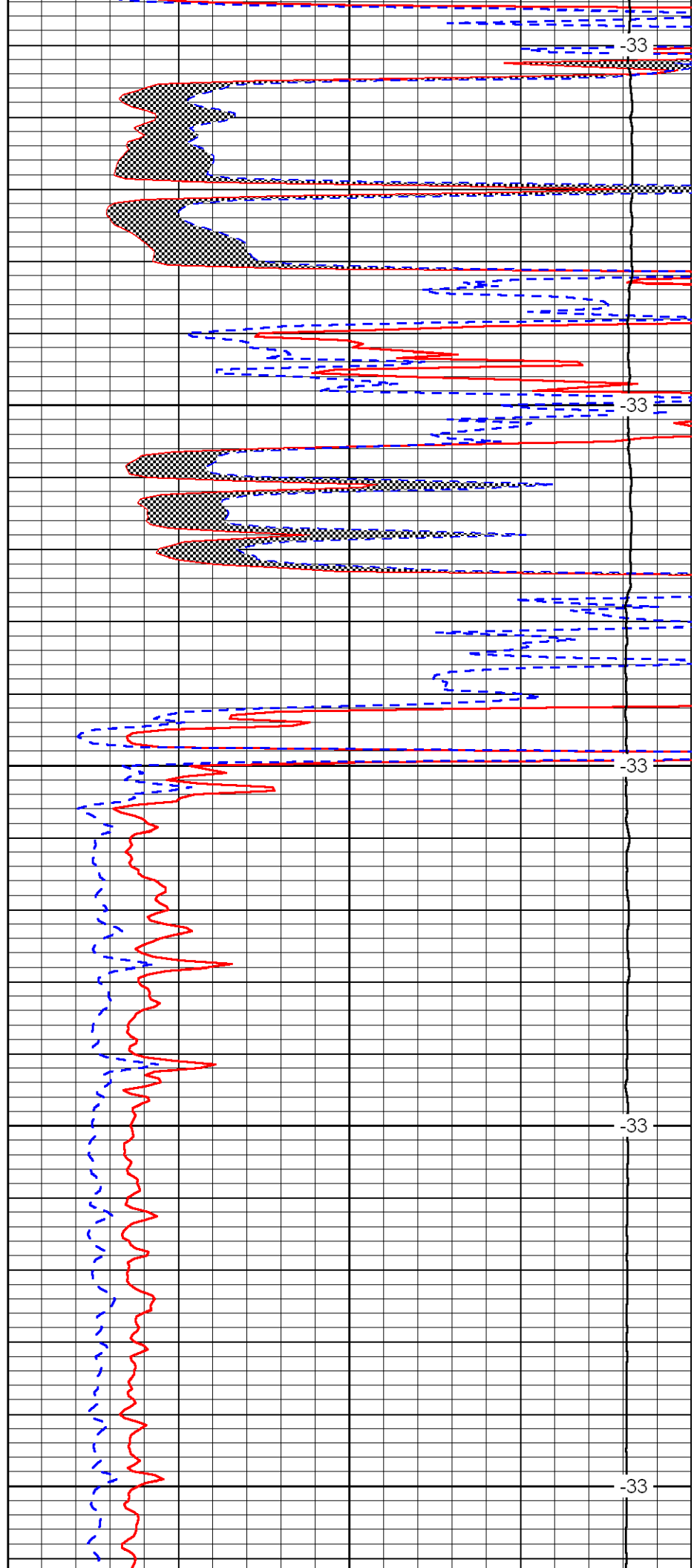
1750

1800

1850

1900

1950



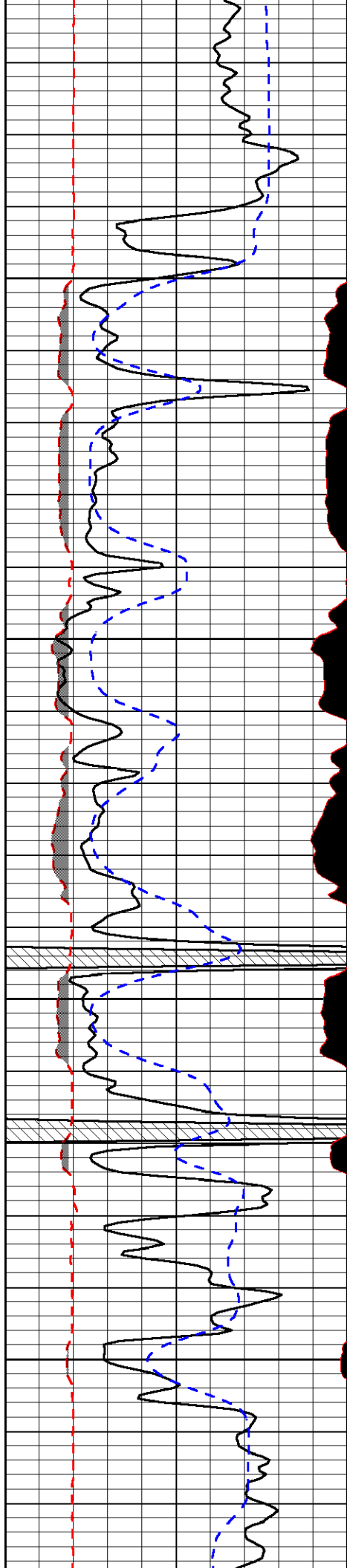
-33

-33

-33

-33

-33

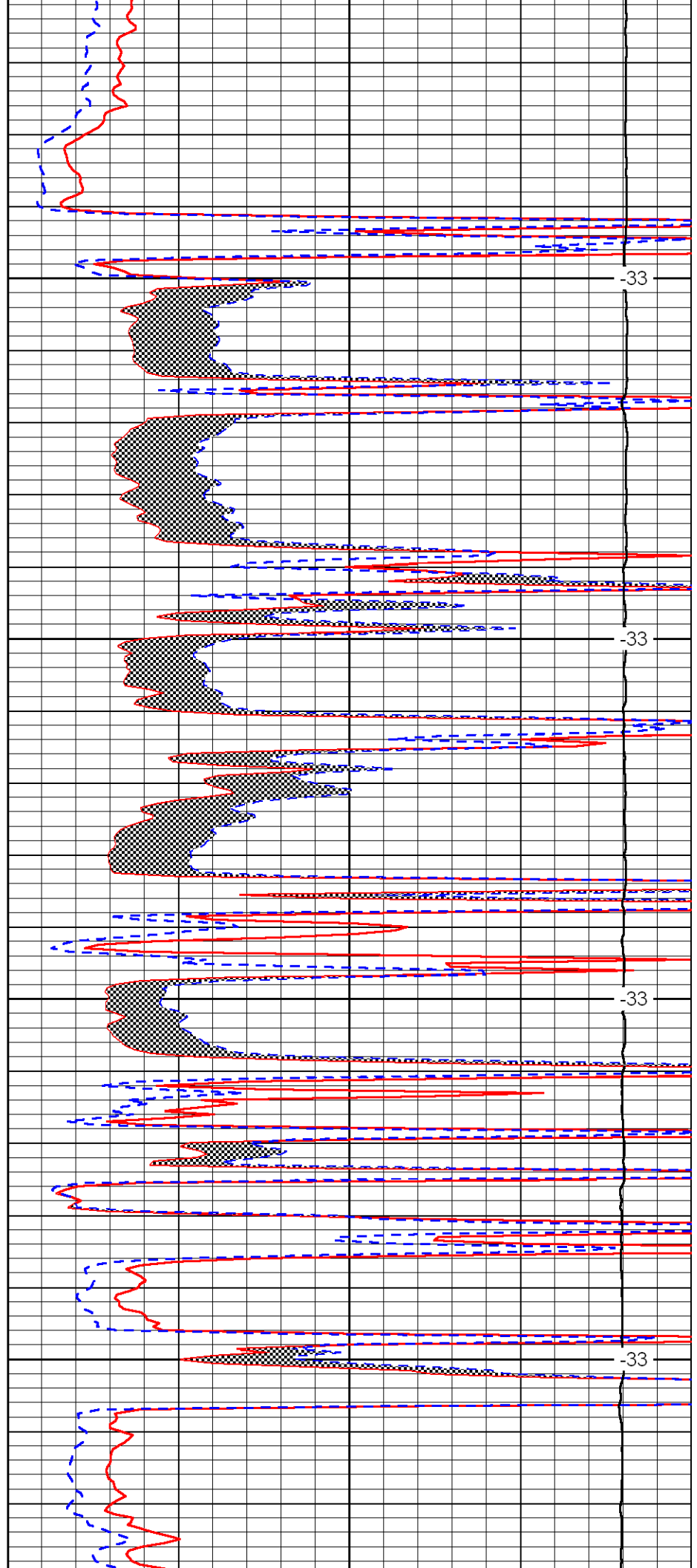


2000

2050

2100

2150

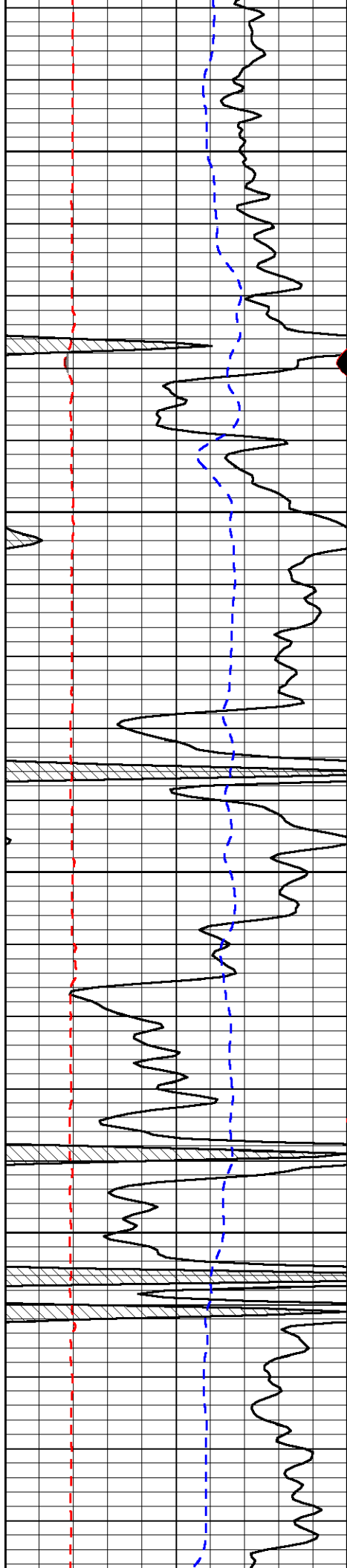


-33

-33

-33

-33

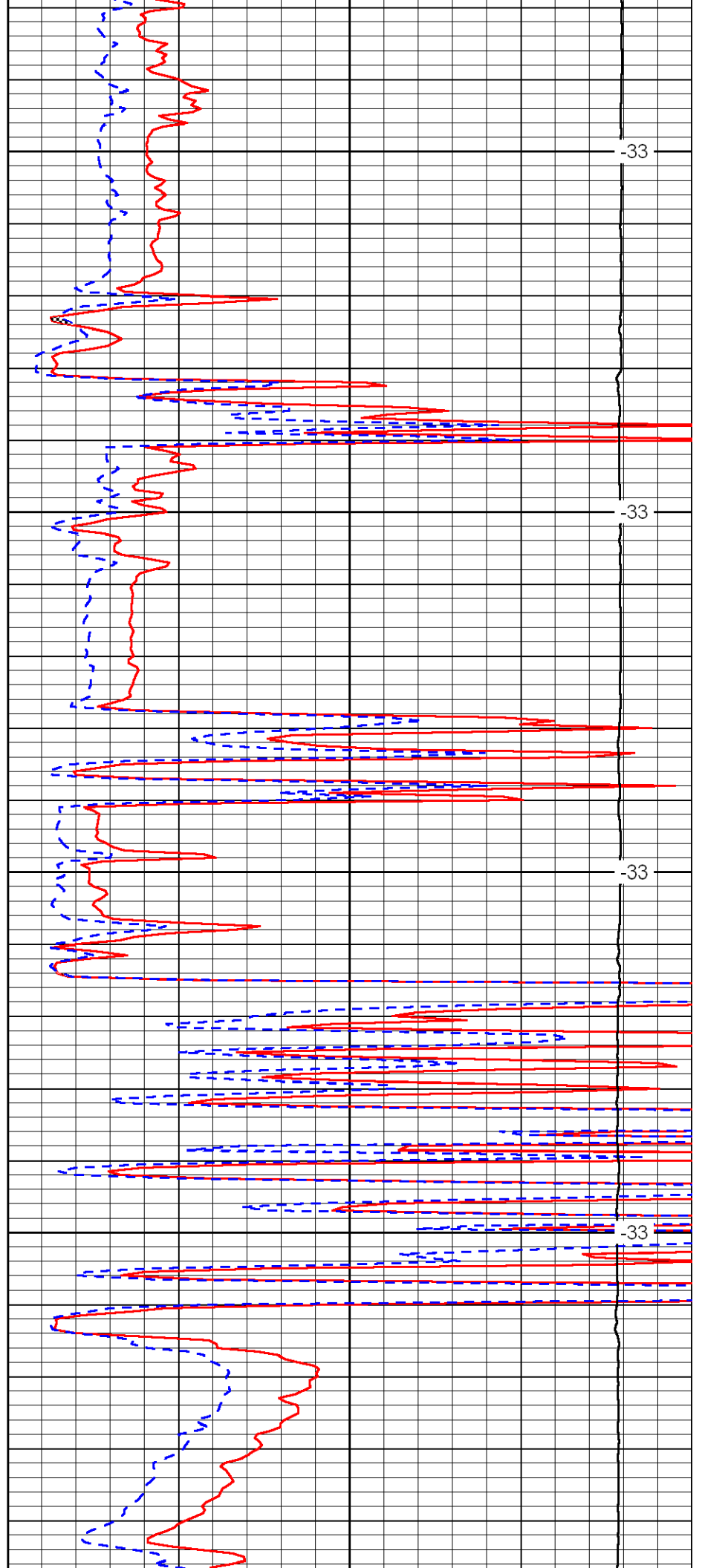


2200

2250

300

350

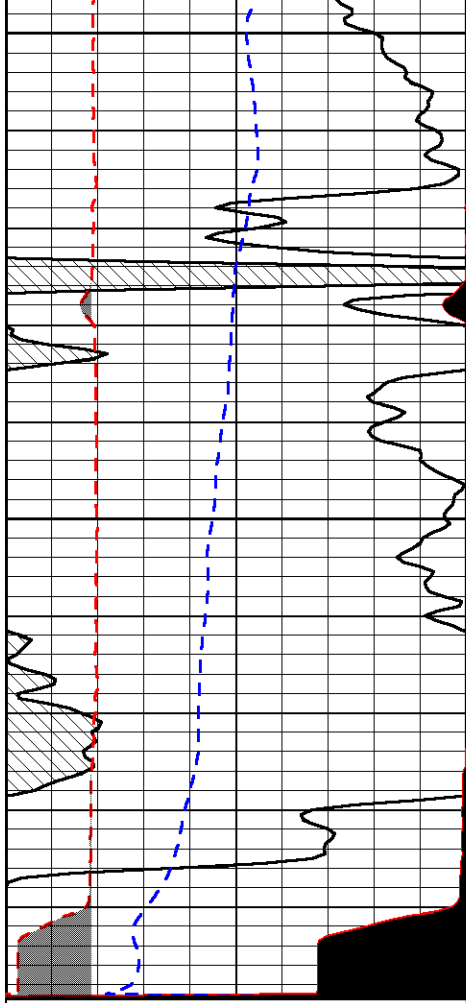


-33

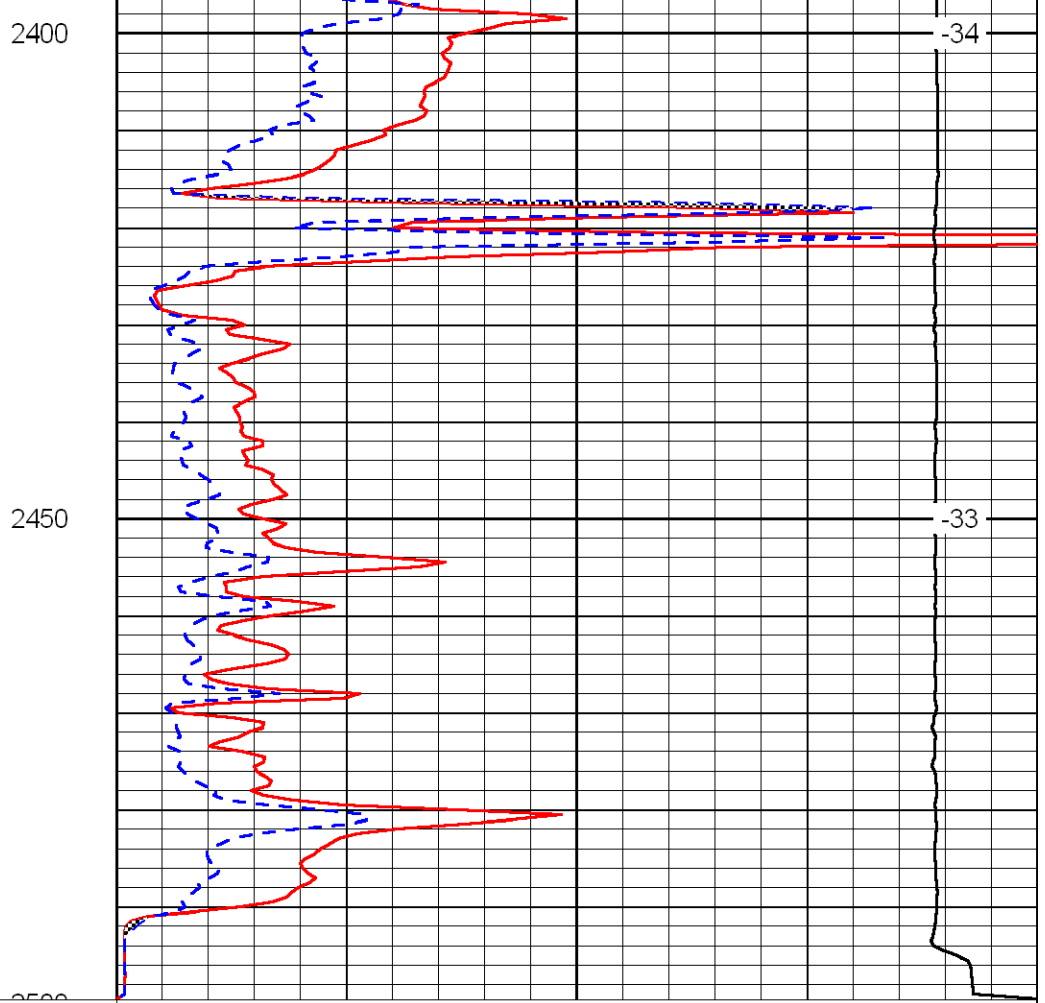
-33

-33

-33



0	Gamma Ray	150
6	MCAL (GAPI)	16
2.875	Mud Cake (GAPI)	7.875
-200	SP	0



0	Micro Inverse 1 X 1	40
0	Micro Normal 2''	40
10000	Line Weight	0
		LSPD