



Pioneer Energy Services

Dual Induction Log

15-015-23,960-00-00

API No.

Company **Vess Oil Corporation**
 Well **Wilson A No.446**
 Field **El Dorado**
 County **Butler** State **Kansas**

Location
330' FNL & 3225' FEL

Sec: **8** Twp: **25S** Rge: **5E**

Other Services
 CNL/CDL
 MEL

Permanent Datum Ground Level Elevation 1389
 Log Measured From Kelly Bushing 6 Ft. Above Perm. Datum
 Drilling Measured From Kelly Bushing

Elevation
 K.B. 1395
 D.F. 1389
 G.L. 1389

Date	11/14/2012	
Run Number	One	
Depth Driller	2447	
Depth Logger	2447	
Bottom Logged Interval	2446	
Top Log Interval	250	
Casing Driller	8.625 @ 261	
Casing Logger	258	
Bit Size	7.875	
Type Fluid in Hole	Chemical	
Salinity,ppm CL	800	
Density / Viscosity	9.3 39	
pH / Fluid Loss	9.5 9.2	
Source of Sample	Flowline	
Rm @ Meas. Temp	1.85 @ 58	
Rmf @ Meas. Temp	1.39 @ 58	
Rmc @ Meas. Temp	2.5 @ 58	
Source of Rmf / Rmc	Charts	
Rm @ BHT	1.07 @ 100	
Operating Rig Time	3 1/2 Hours	
Max Rec. Temp. F	100	
Equipment Number	17	
Location	Hays	
Recorded By	C. Desaire	
Witnessed By	Roger Martin	

<<< Fold Here >>>

All interpretations are opinions based on inferences from electrical or other measurements and we cannot and do not guarantee the accuracy or correctness of any interpretation, and we shall not, except in the case of gross or willful negligence on our part, be liable or responsible for any loss, costs, damages, or expenses incurred or sustained by anyone resulting from any interpretation made by any of our officers, agents or employees. These interpretations are also subject to our general terms and conditions set out in our current Price Schedule.

Comments

Thank you for using Pioneer Energy Services
www.pioneerenergy.com
 785 625 3858

Potwin KS, E to 40 Rd,
 2 E, S, Left at fork, Right at fork, Right at fork

Database File: c:\warrior\data\vess_wilson a #446\vesshd.db
 Dataset Pathname: dil\vesstk
 Presentation Format: dil2in
 Dataset Creation: Wed Nov 14 13:01:53 2012
 Charted by: Depth in Feet scaled 1:600

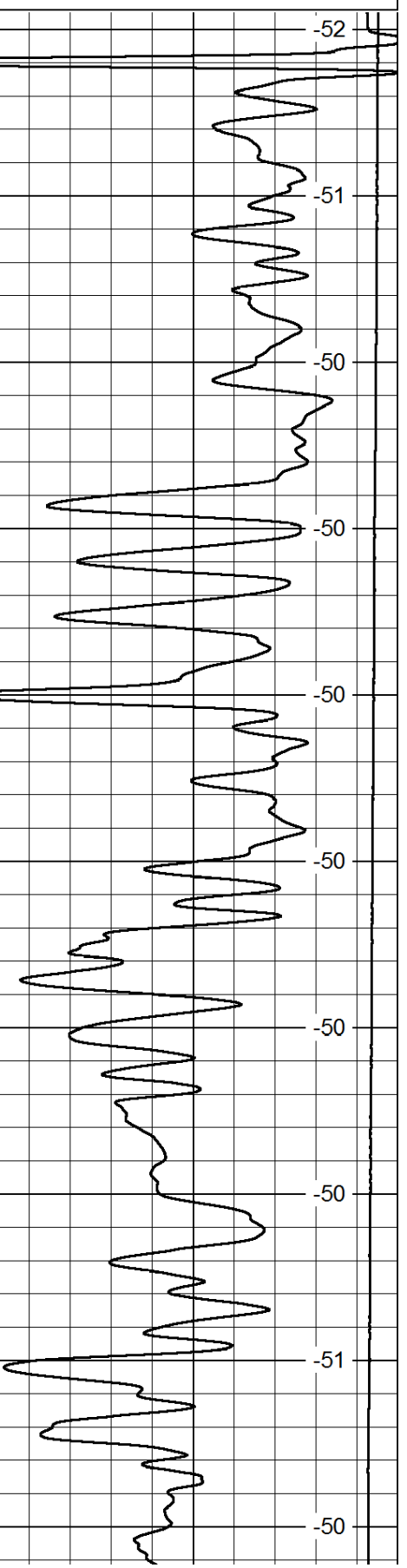
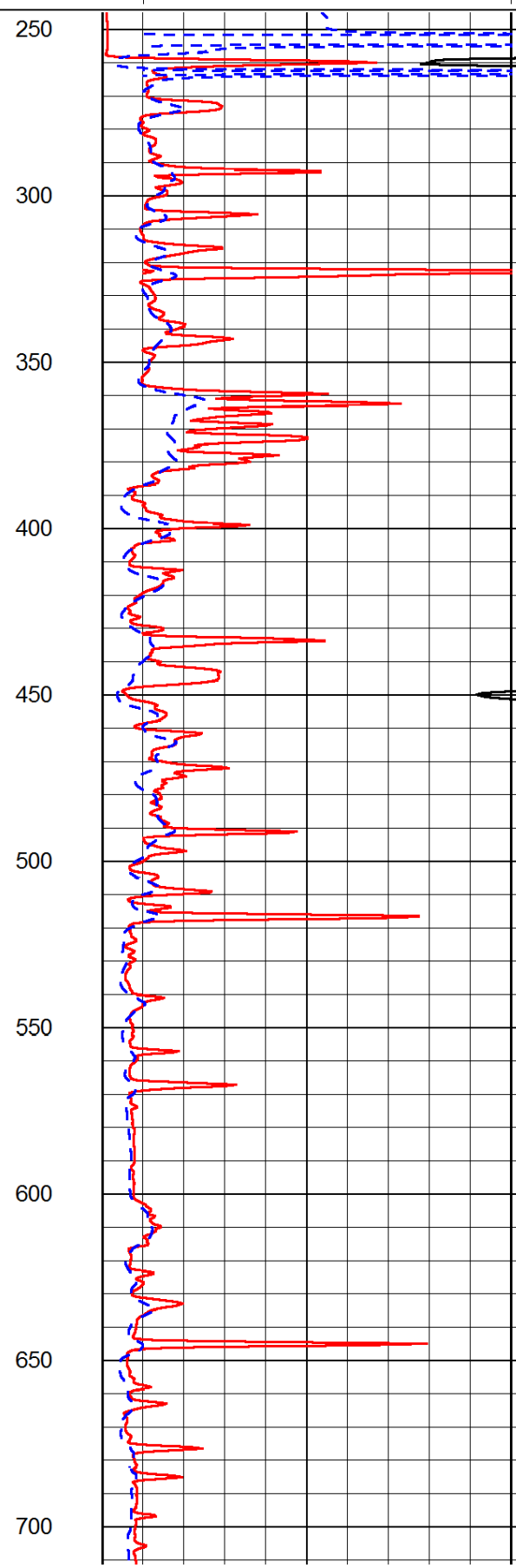
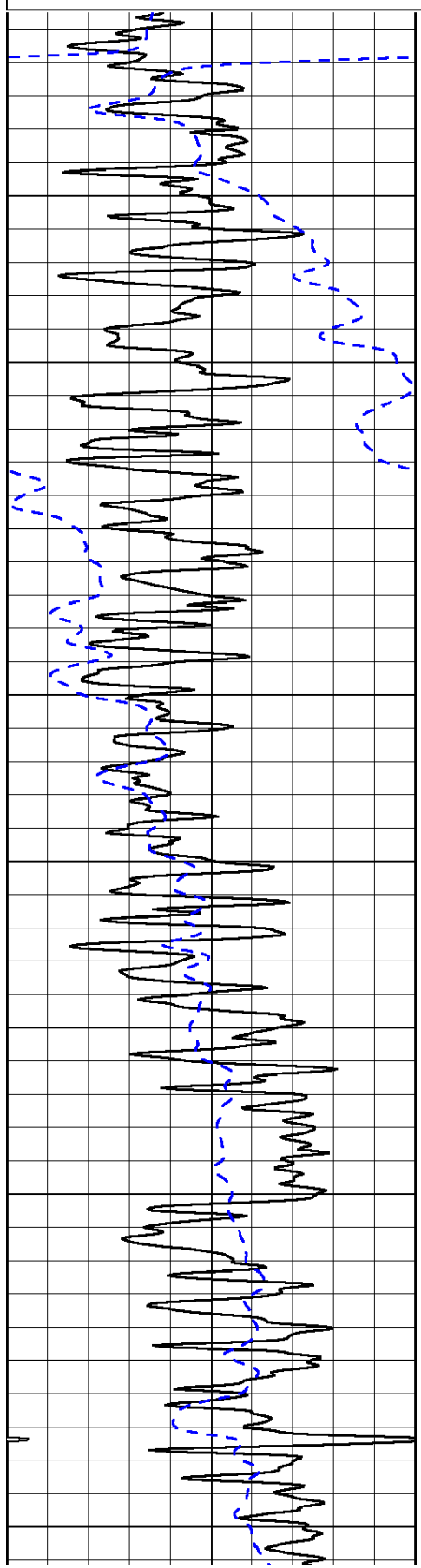
0	Gamma Ray	150
-200	SP (mV)	0

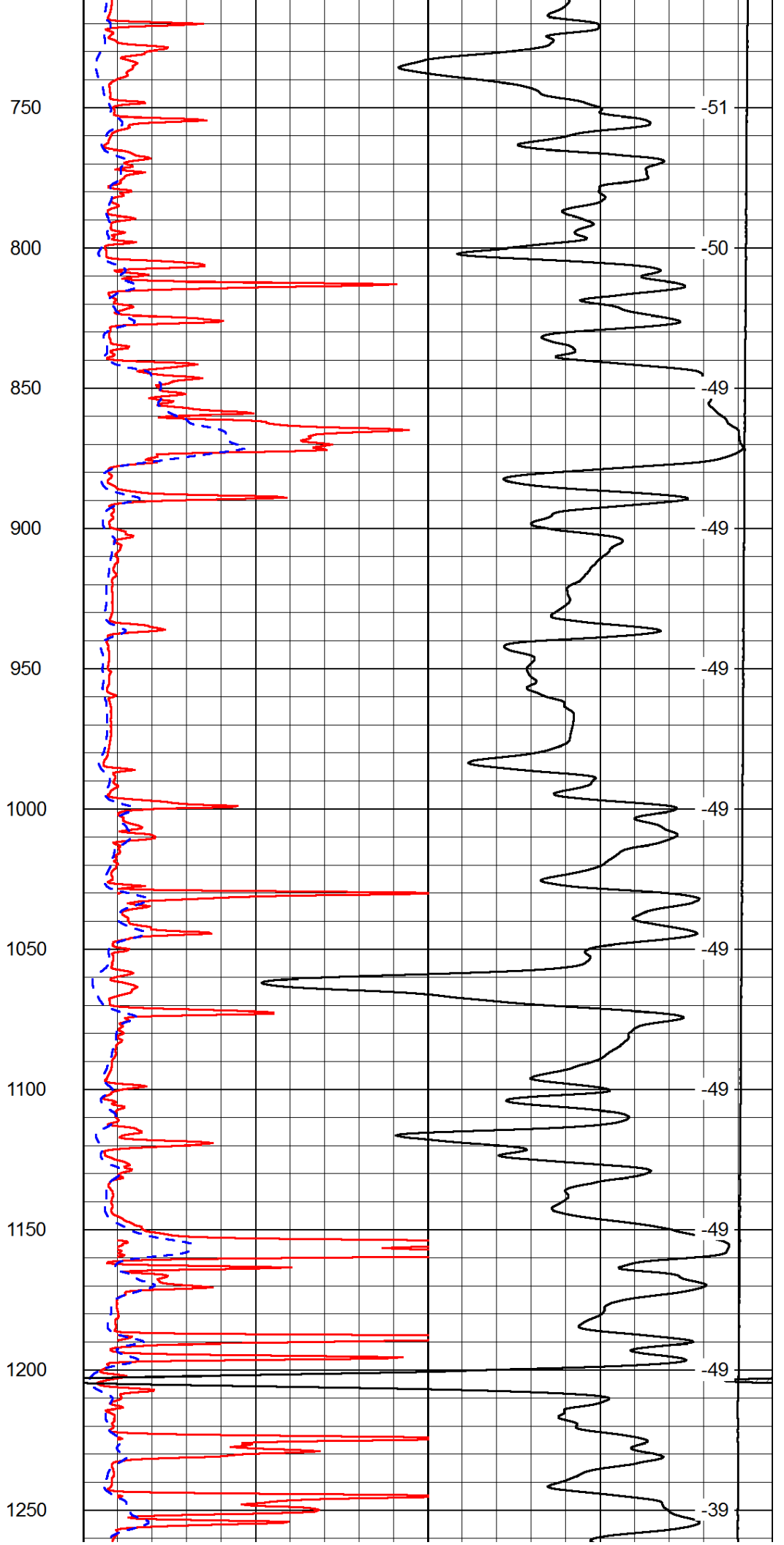
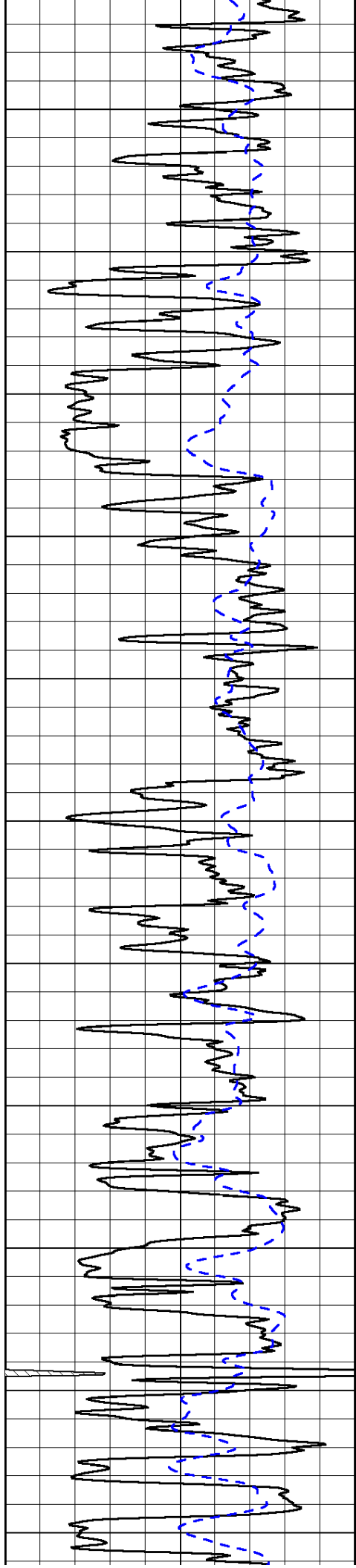
0	Shallow Resistivity	50
0	Deep Resistivity	50

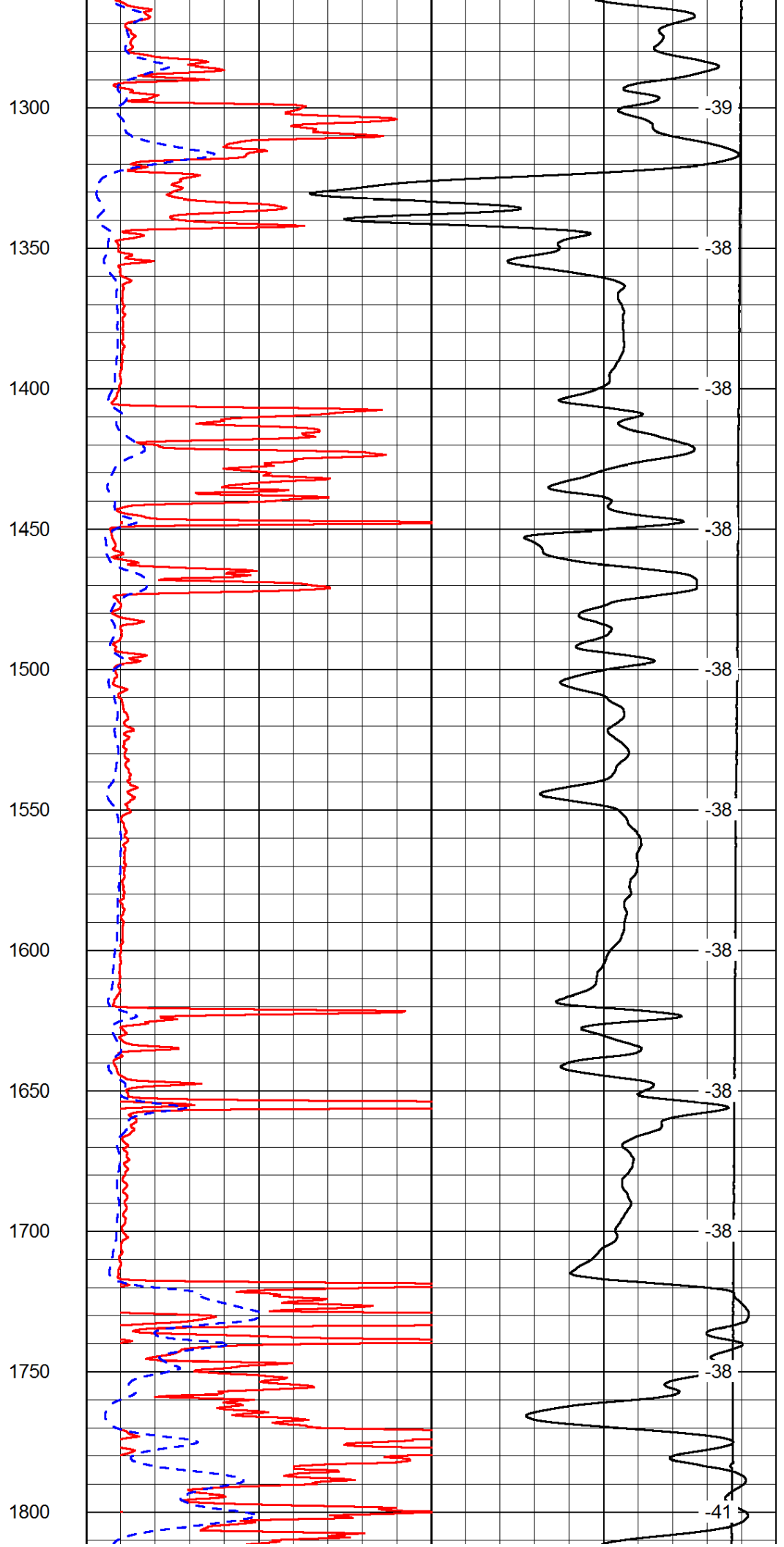
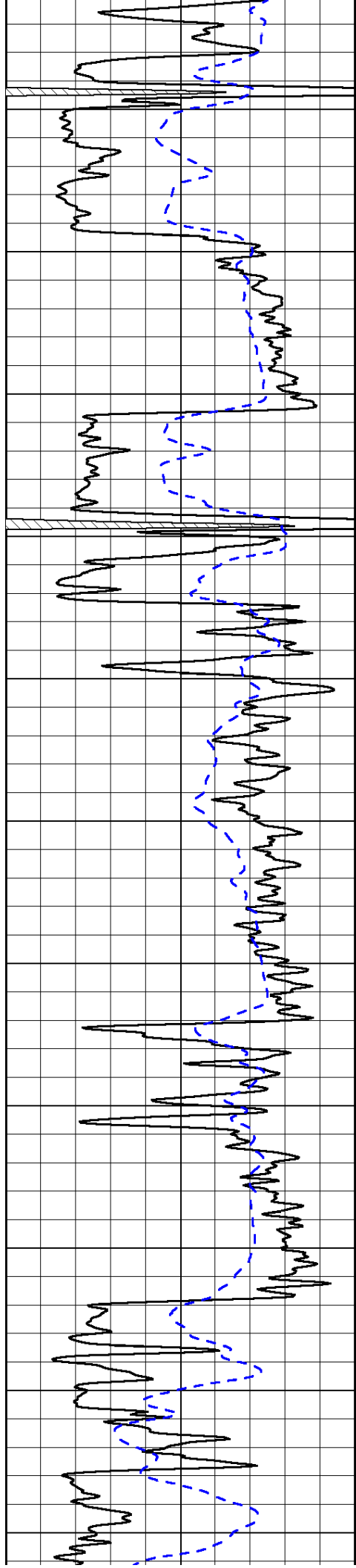
LSPD

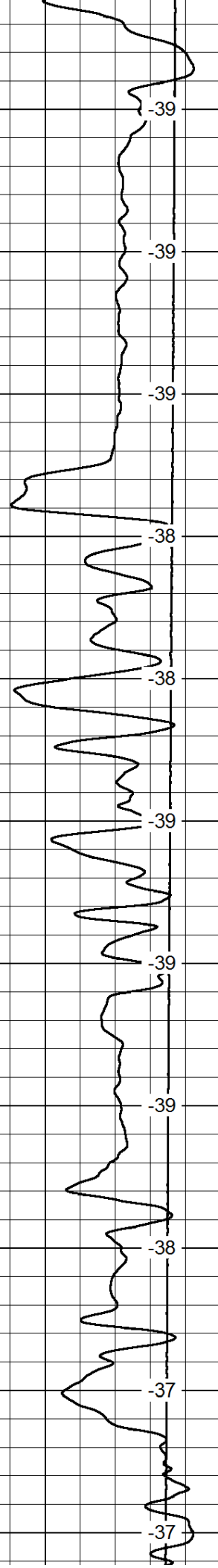
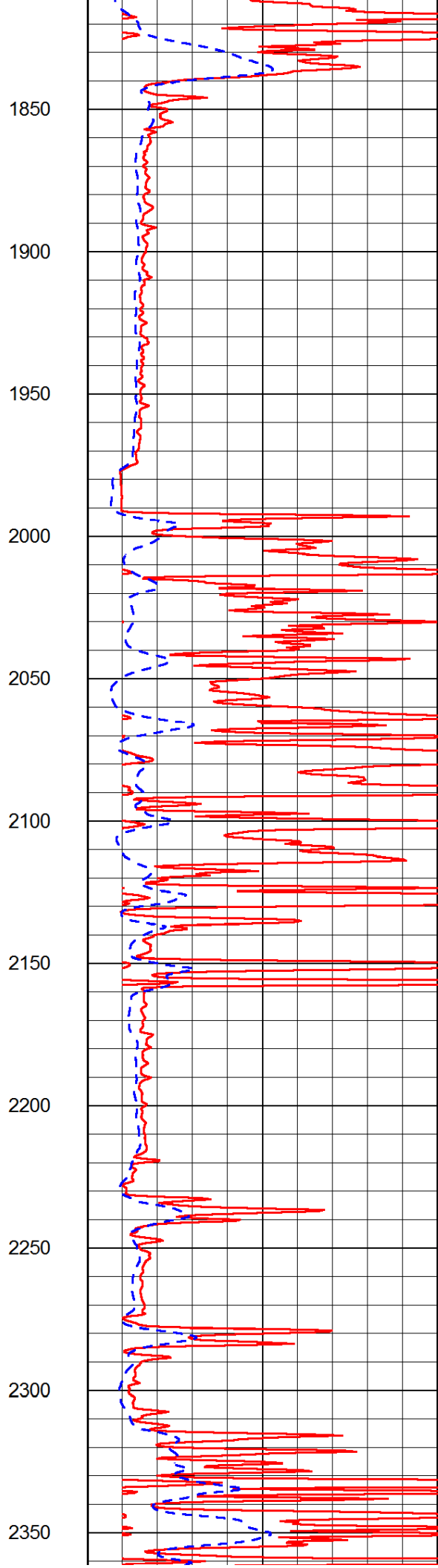
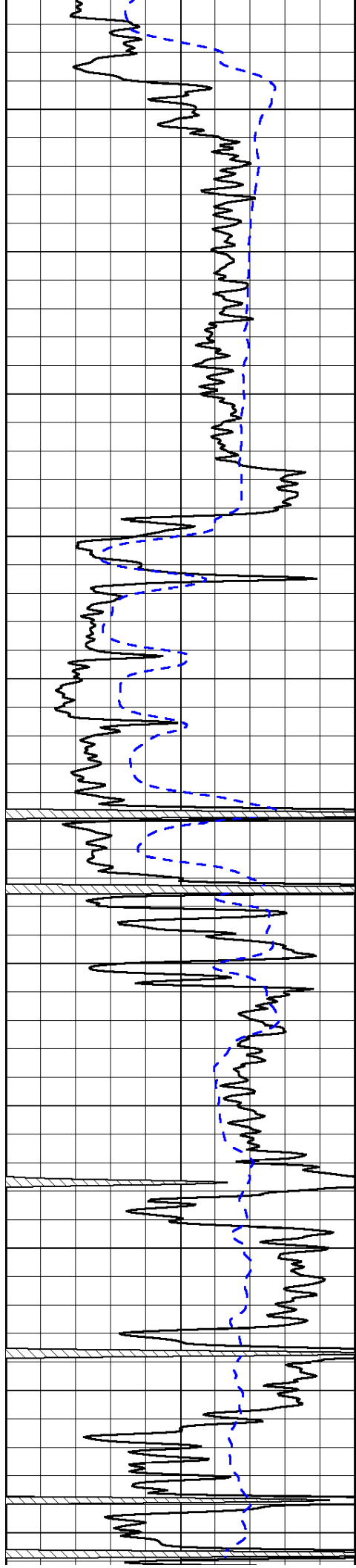
1000	Conductivity	0
15000	Line Tension	0

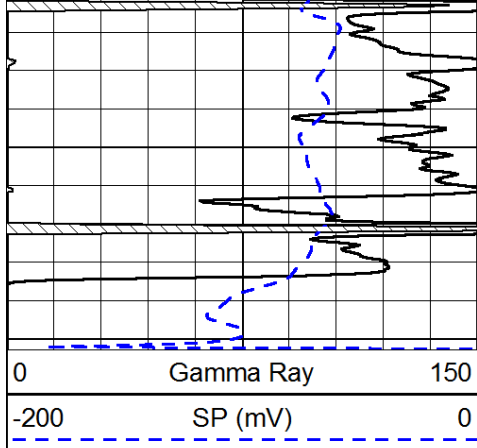
50	Shallow Resistivity	500
50	Deep Resistivity	500





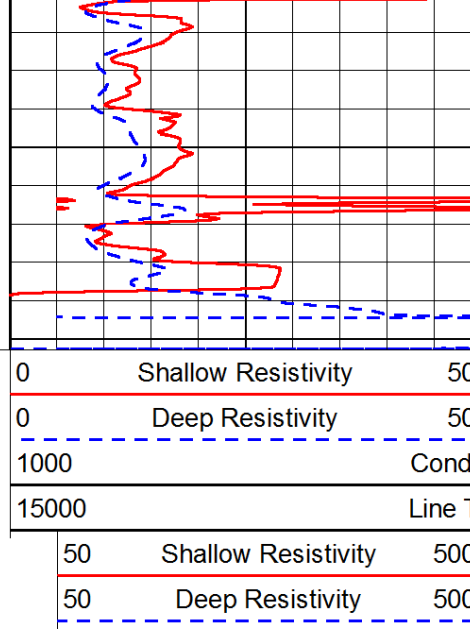






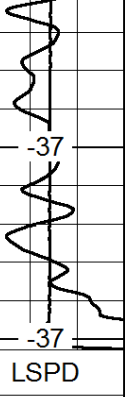
2400

2450



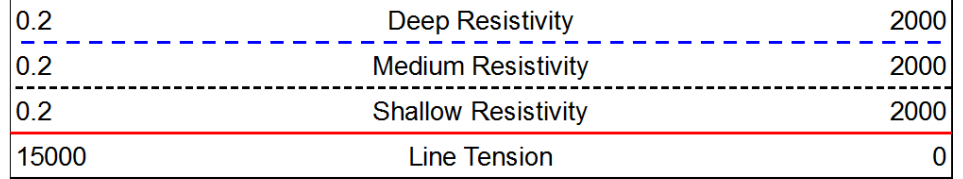
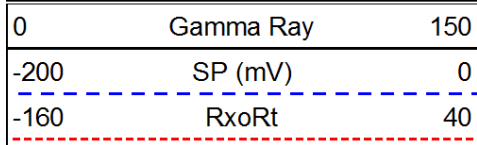
Conductivity

Line Tension

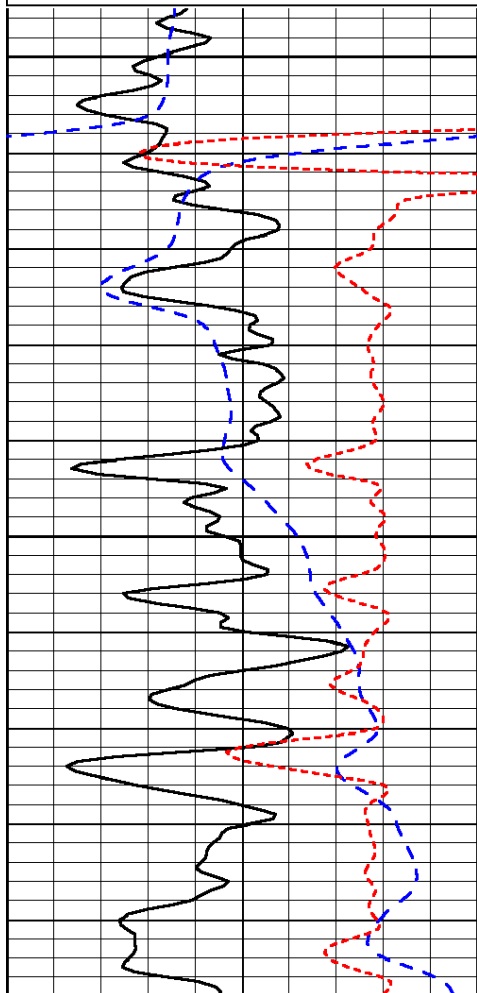


LSPD

Database File: c:\warrior\data\vesse_wilson a #446\vesshd.db
 Dataset Pathname: dil/vesstk
 Presentation Format: dil
 Dataset Creation: Wed Nov 14 13:01:53 2012
 Charted by: Depth in Feet scaled 1:240

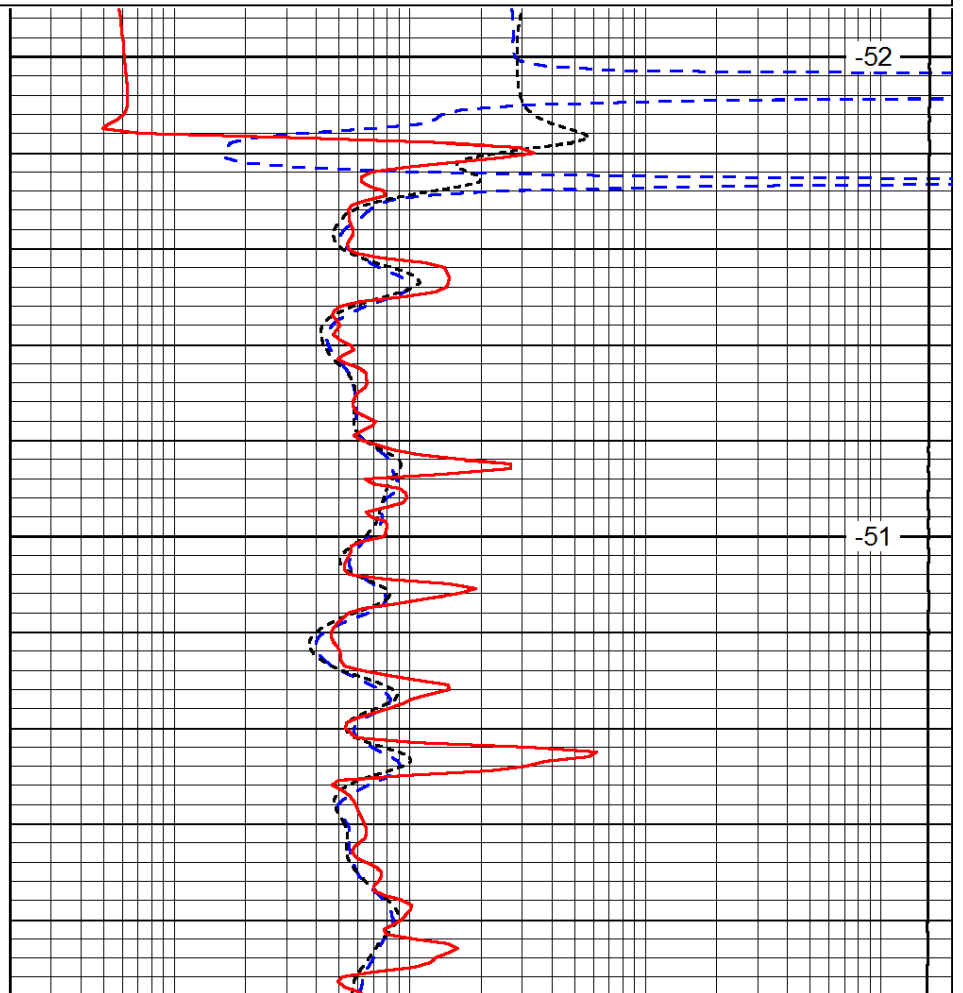


LSPD



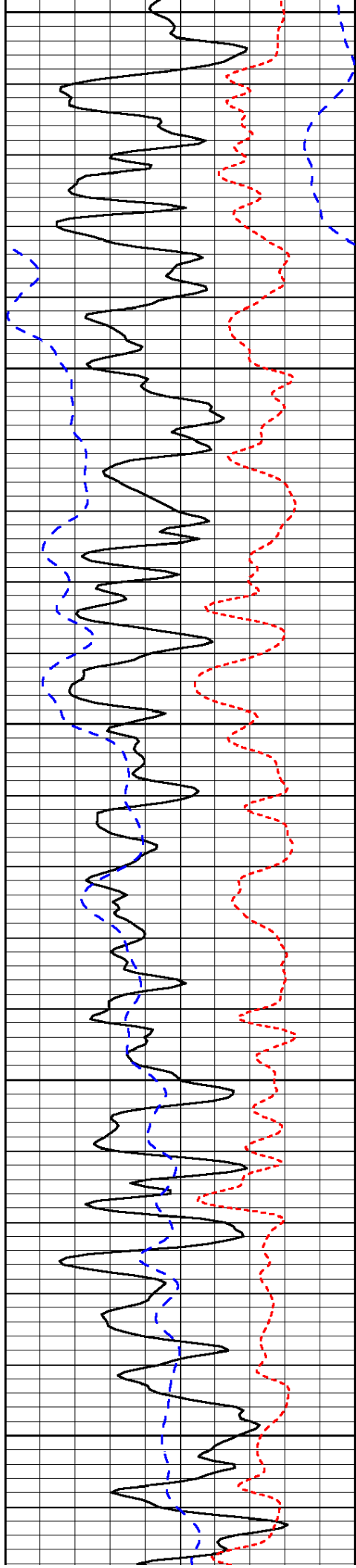
250

300



-52

-51



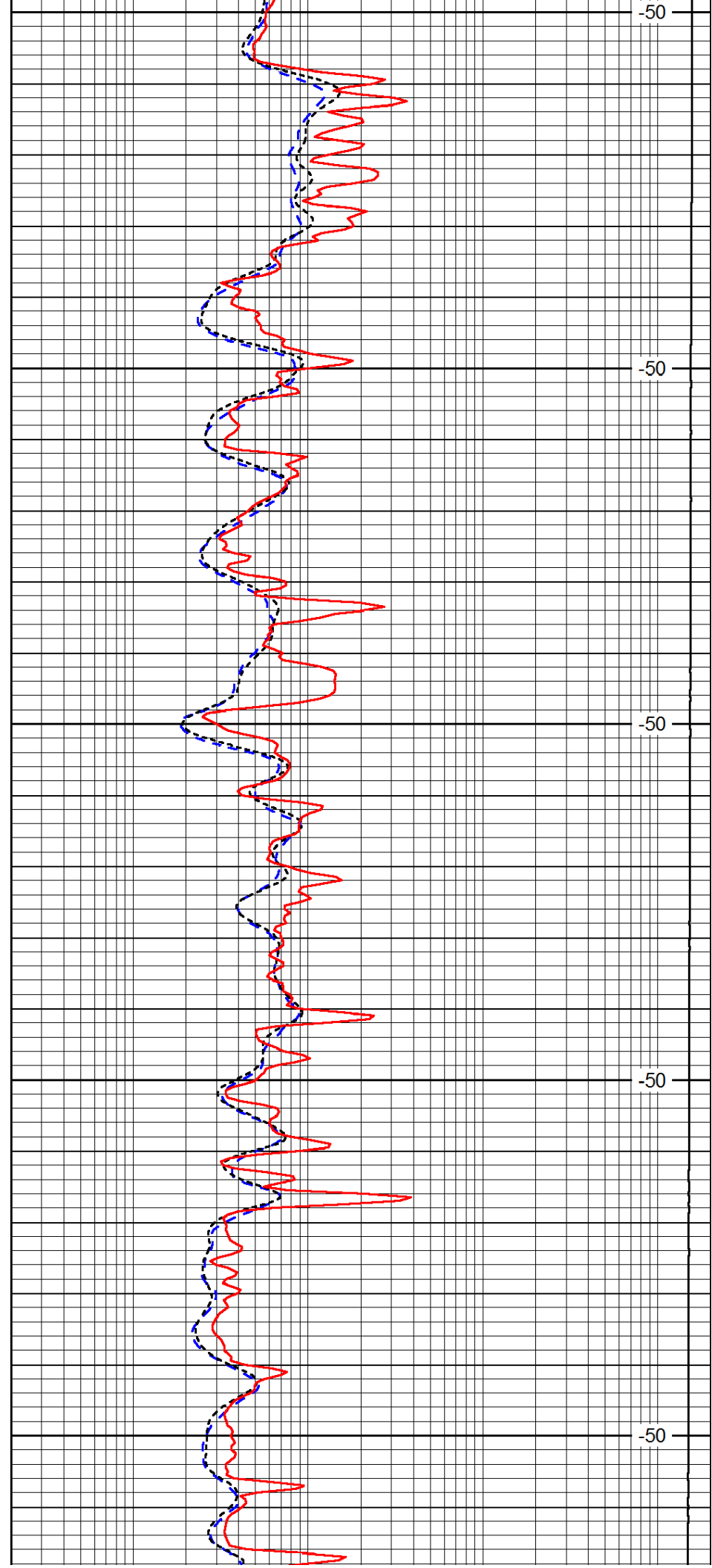
350

400

450

500

550



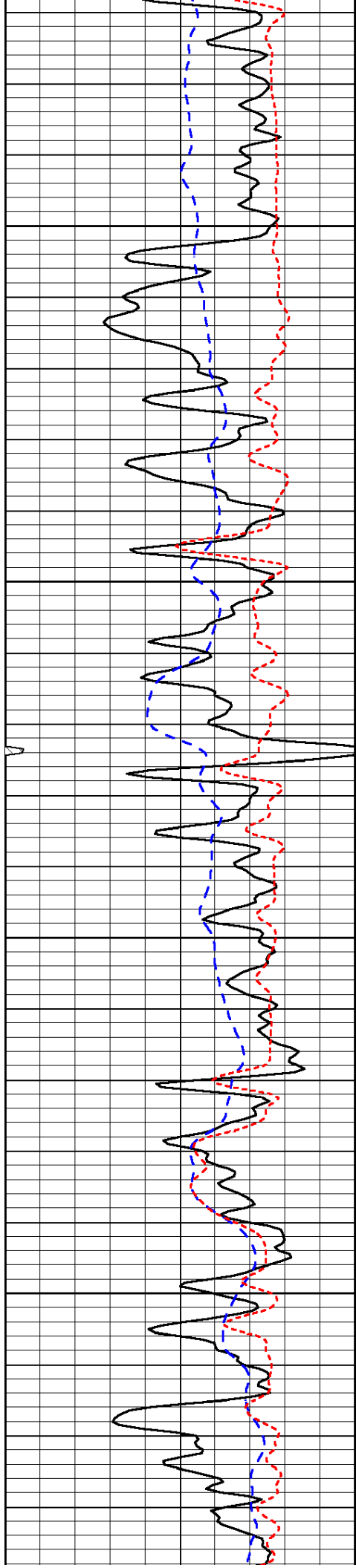
-50

-50

-50

-50

-50

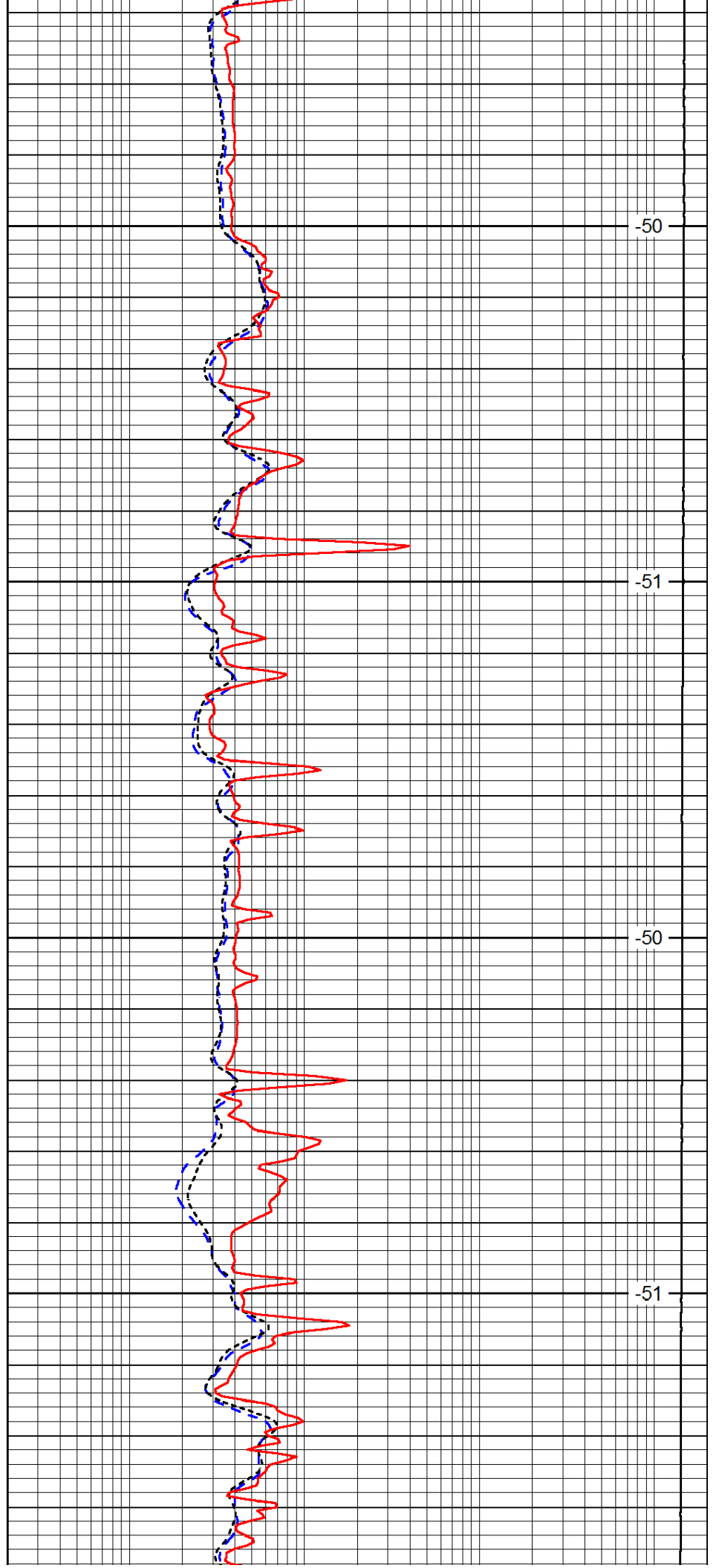


600

650

700

750

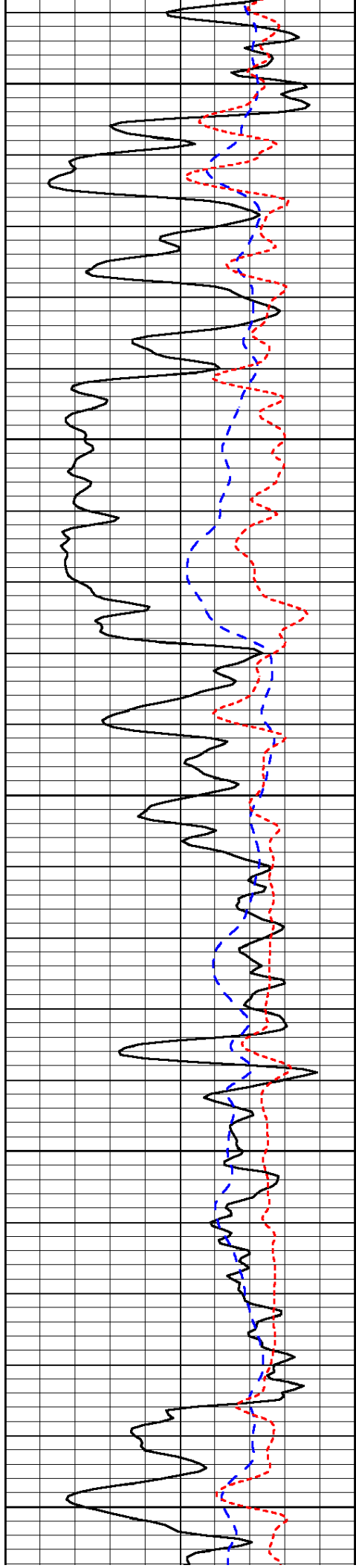


-50

-51

-50

-51



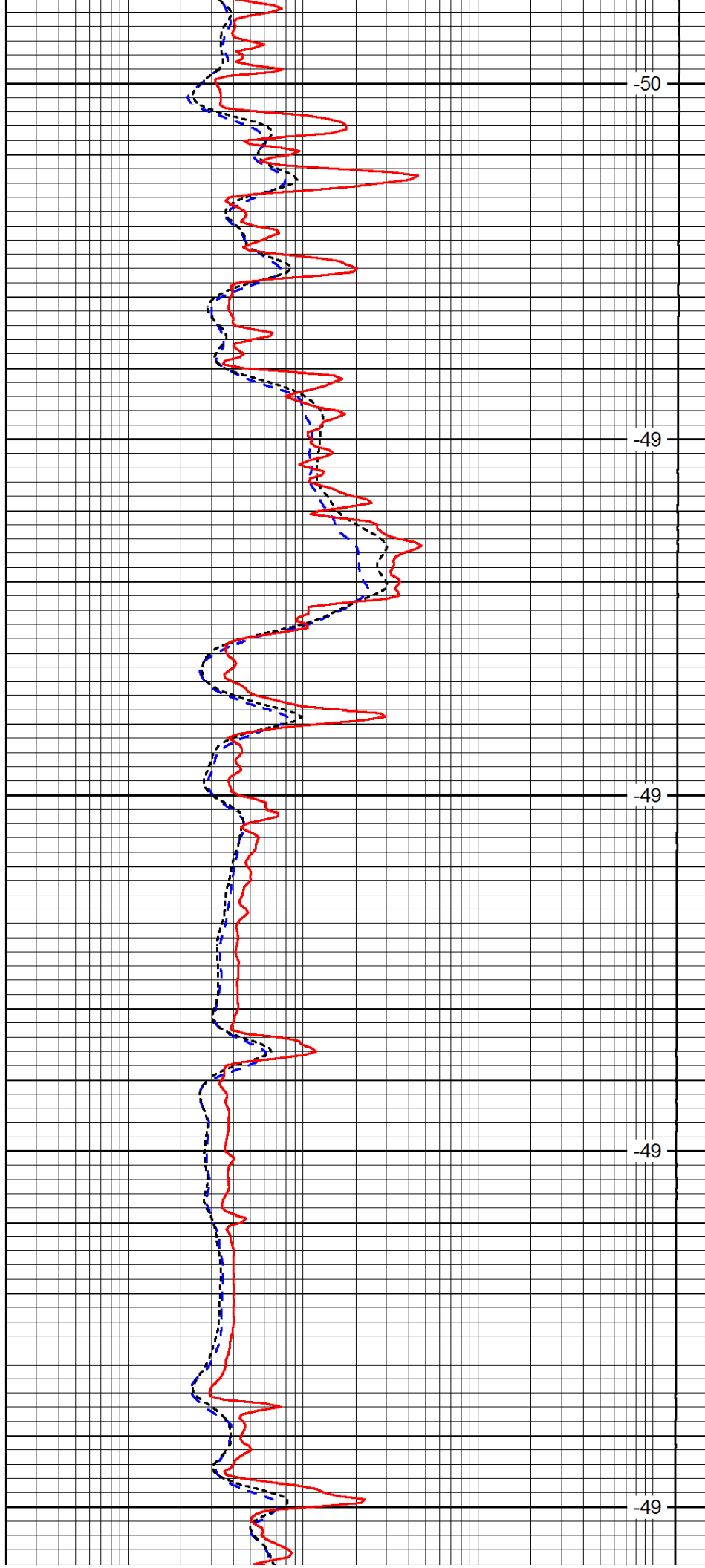
800

850

900

950

1000



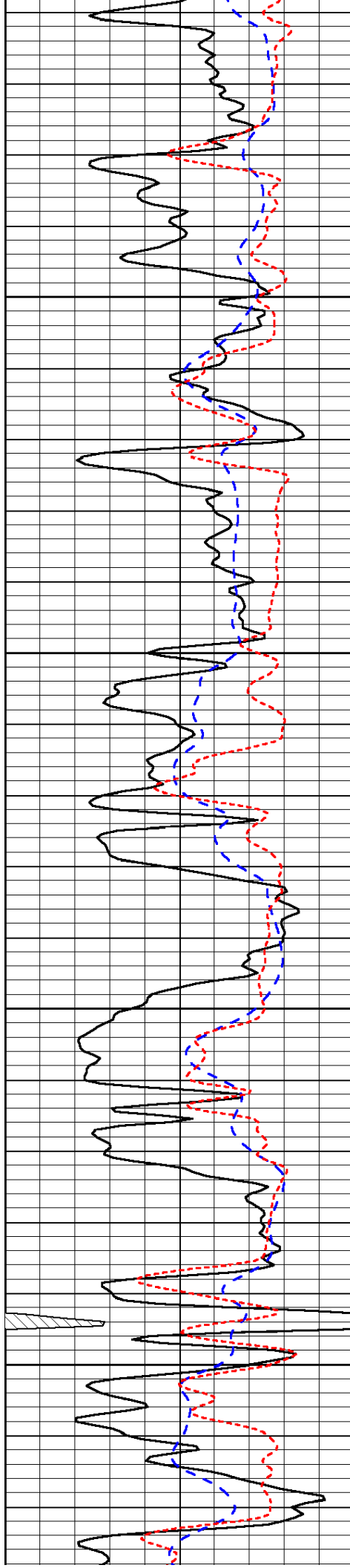
-50

-49

-49

-49

-49

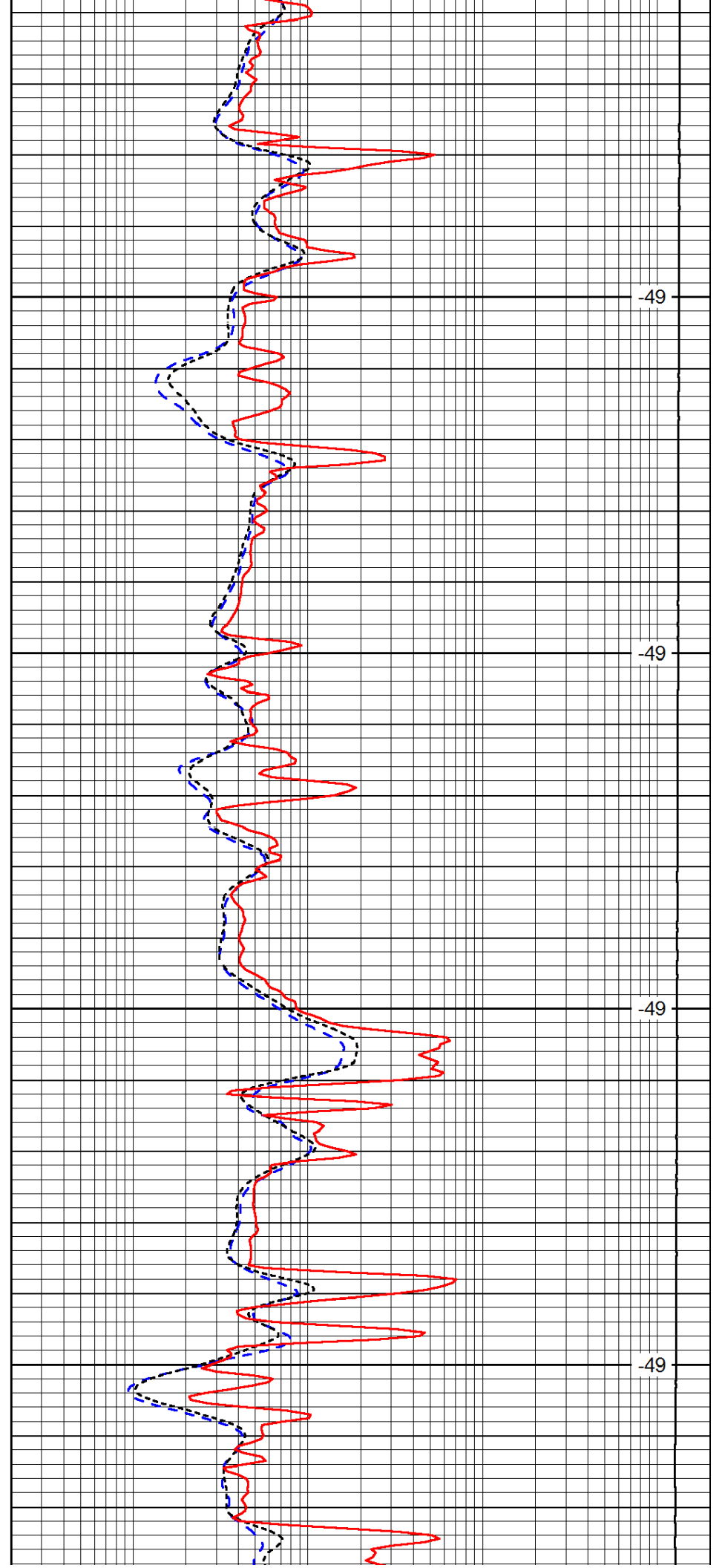


1050

1100

1150

1200

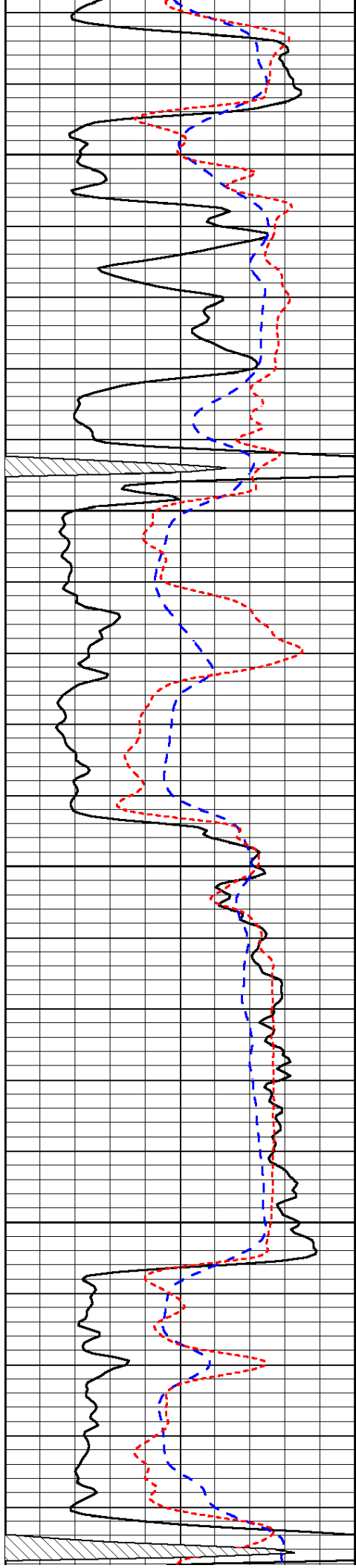


-49

-49

-49

-49

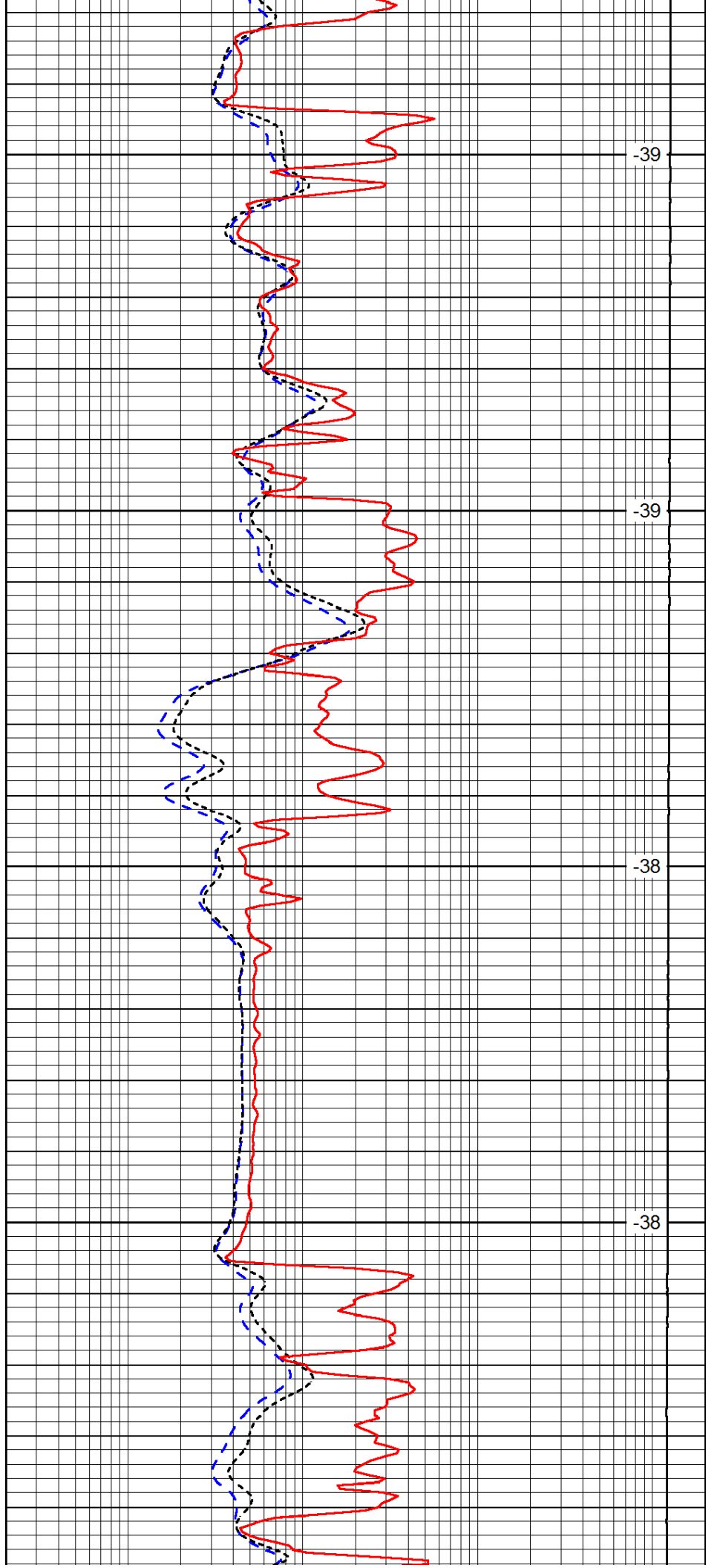


1250

1300

1350

1400

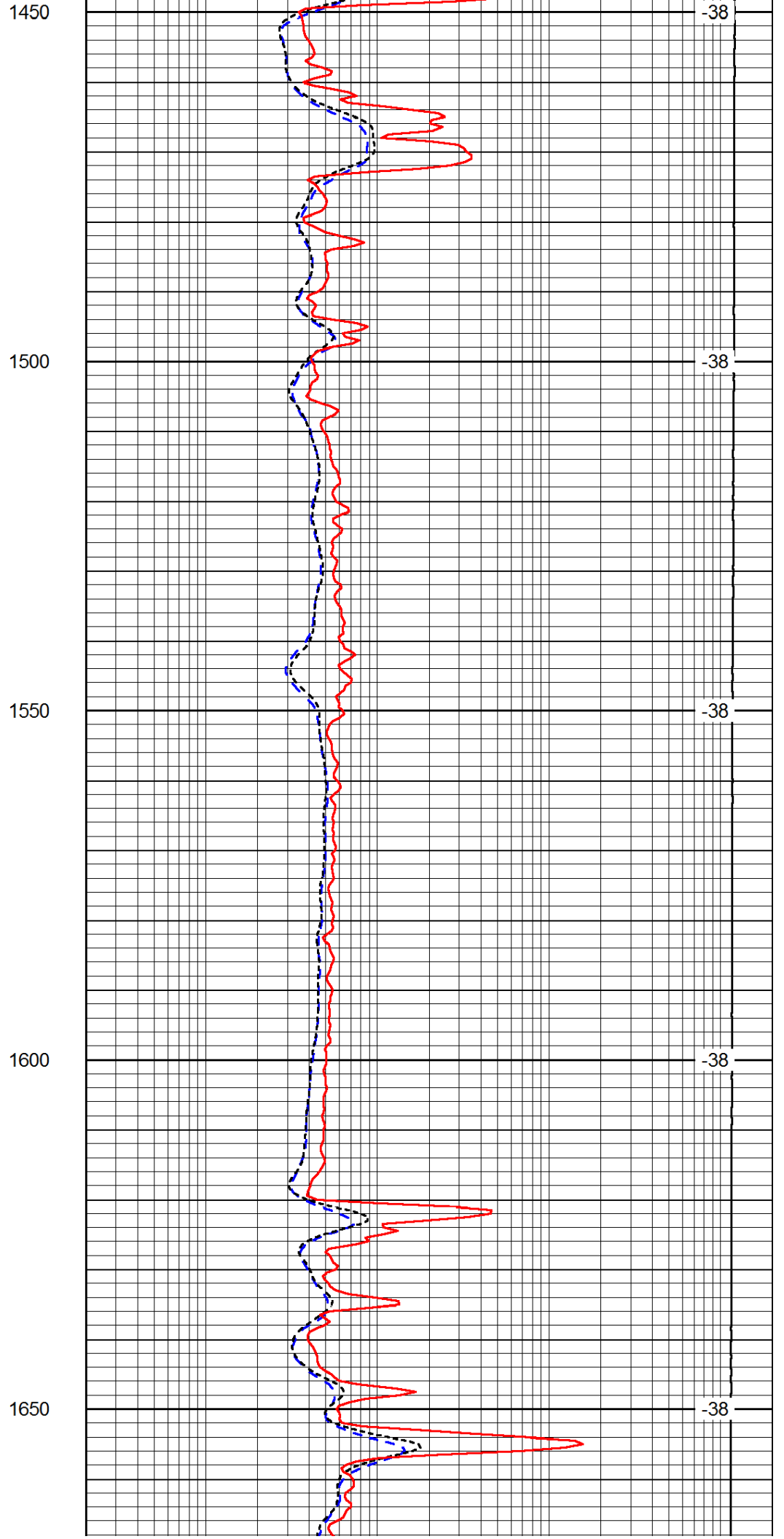
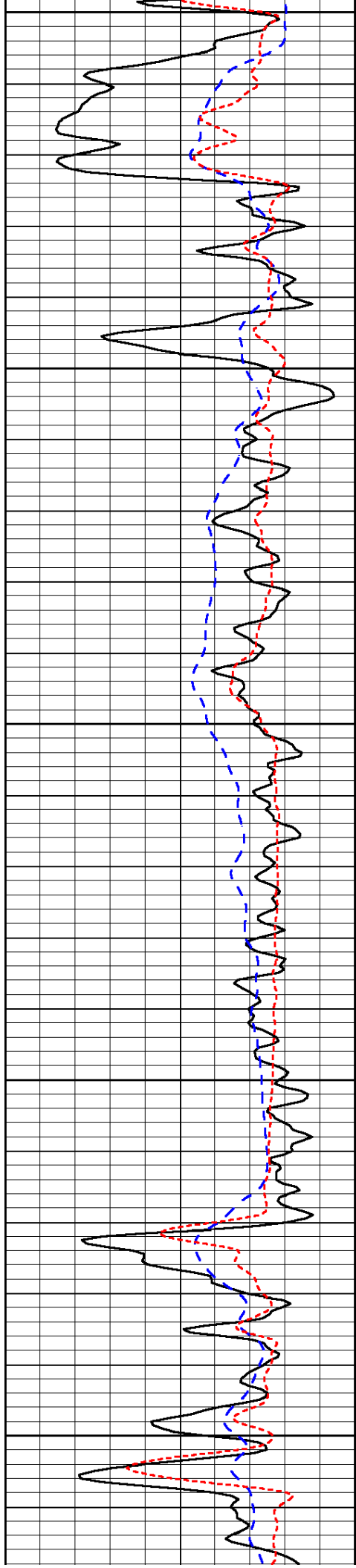


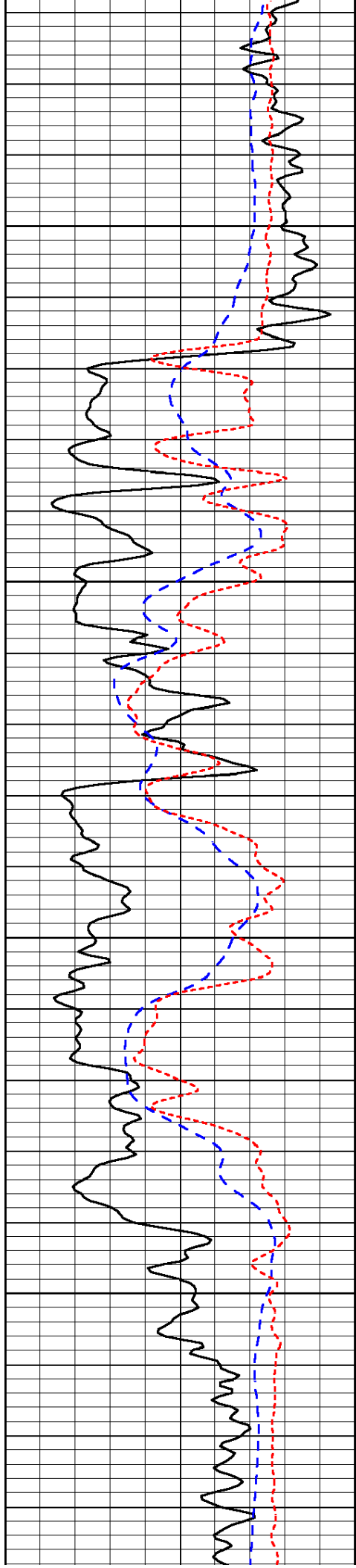
-39

-39

-38

-38



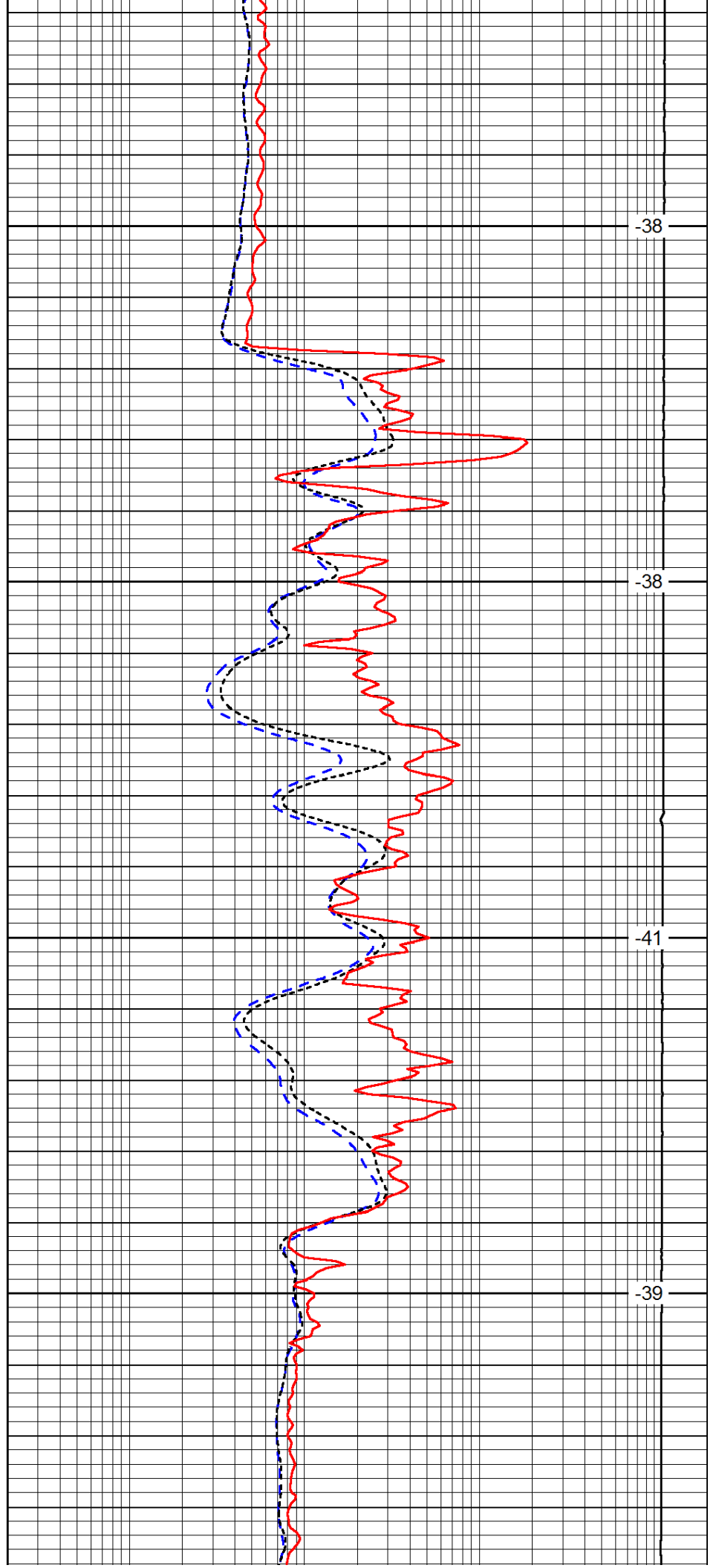


1700

1750

1800

1850

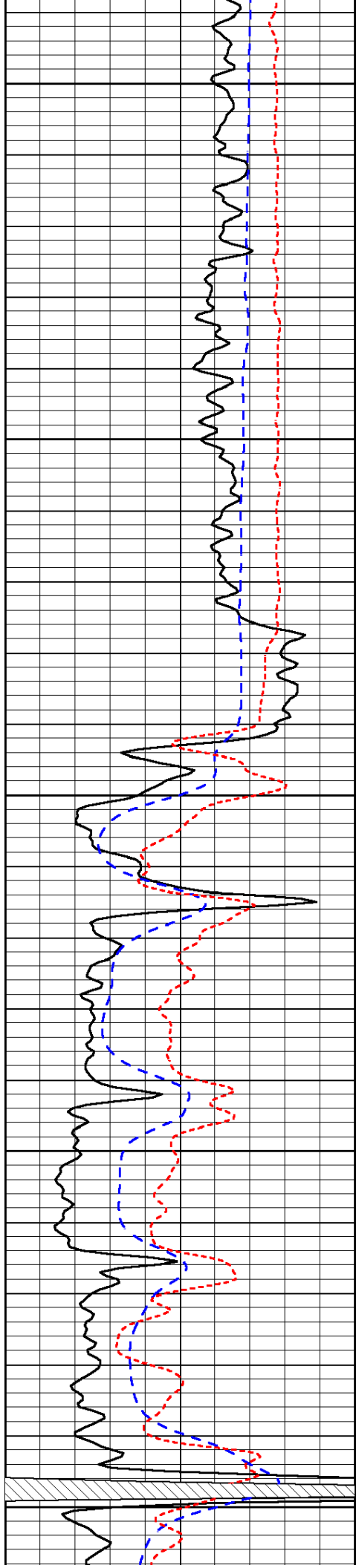


-38

-38

-41

-39



1900

1950

2000

2050

2100

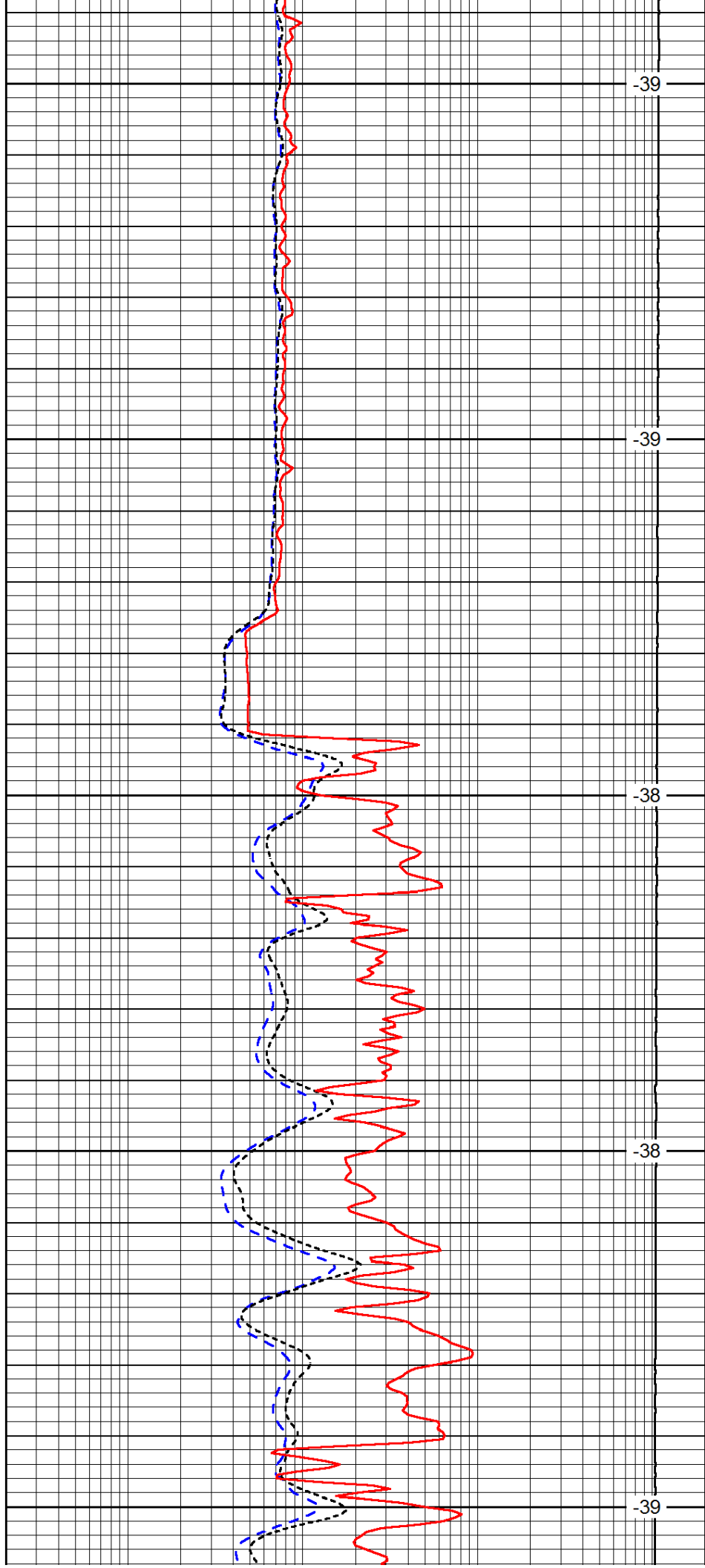
-39

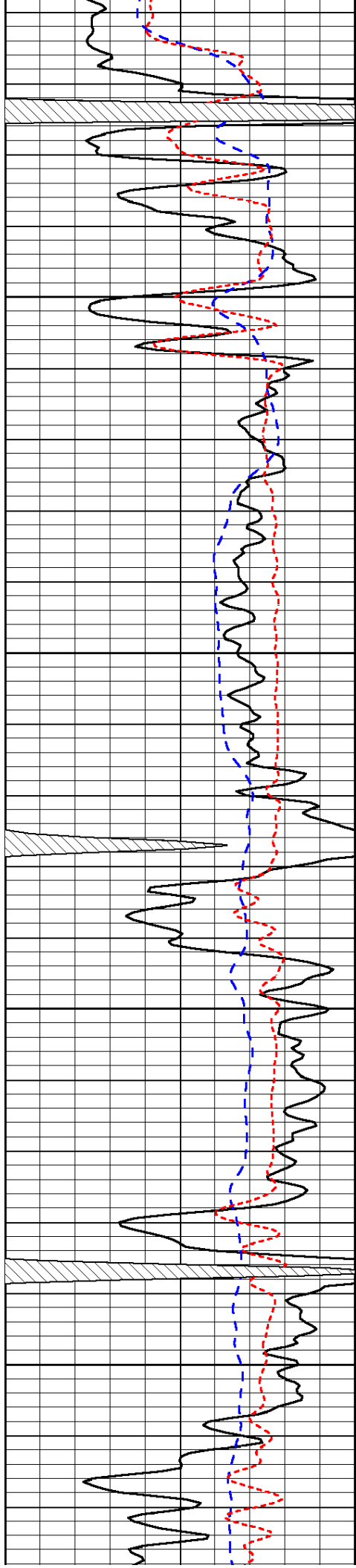
-39

-38

-38

-39



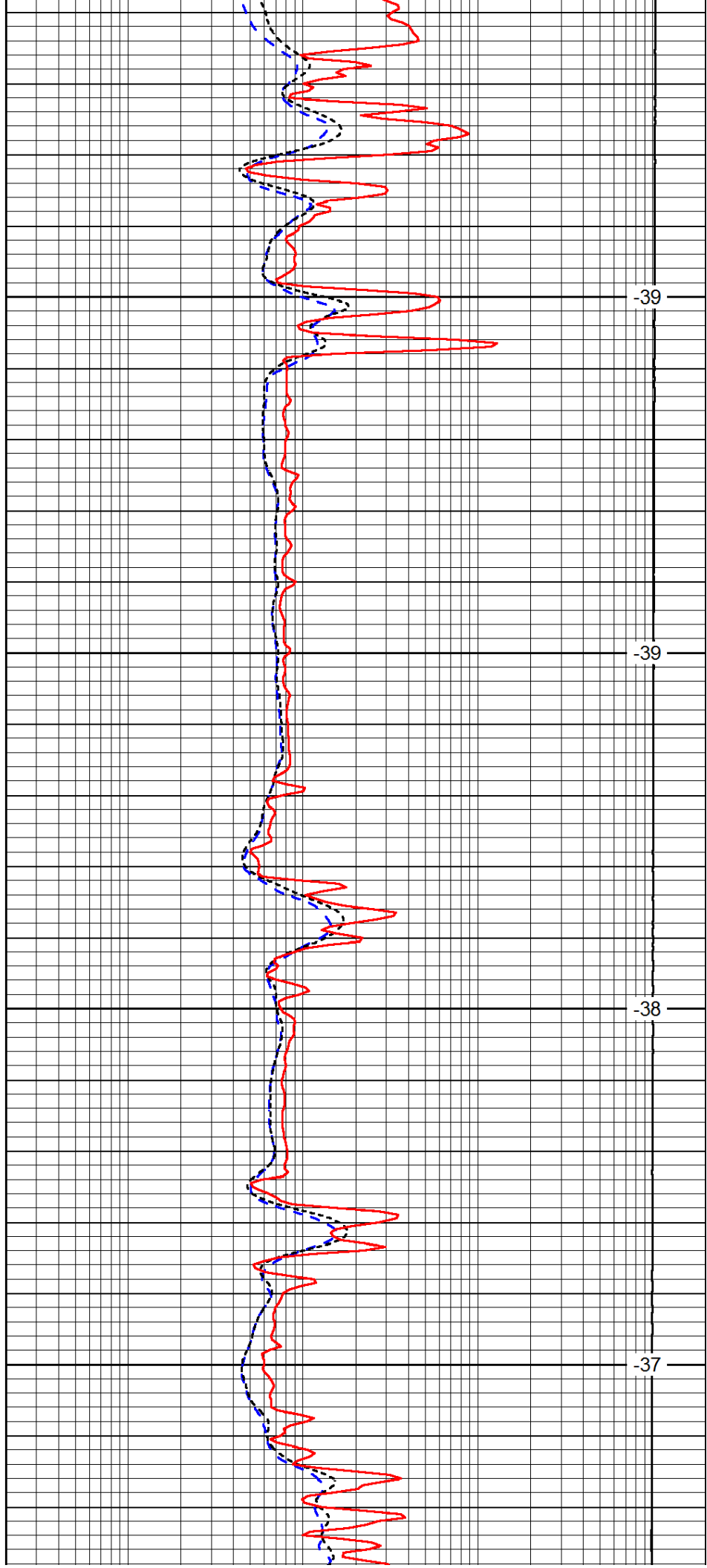


2150

2200

2250

2300

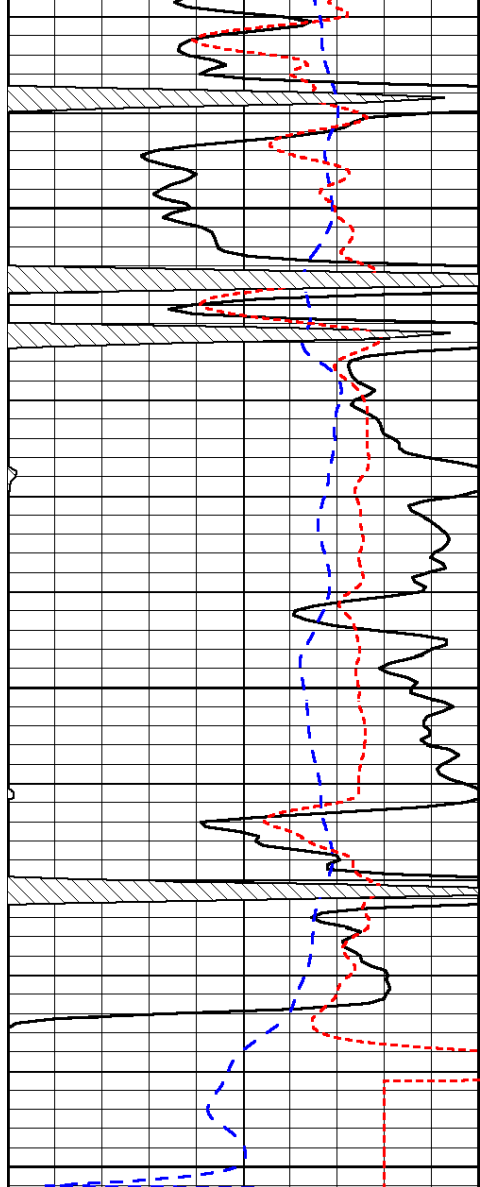


-39

-39

-38

-37

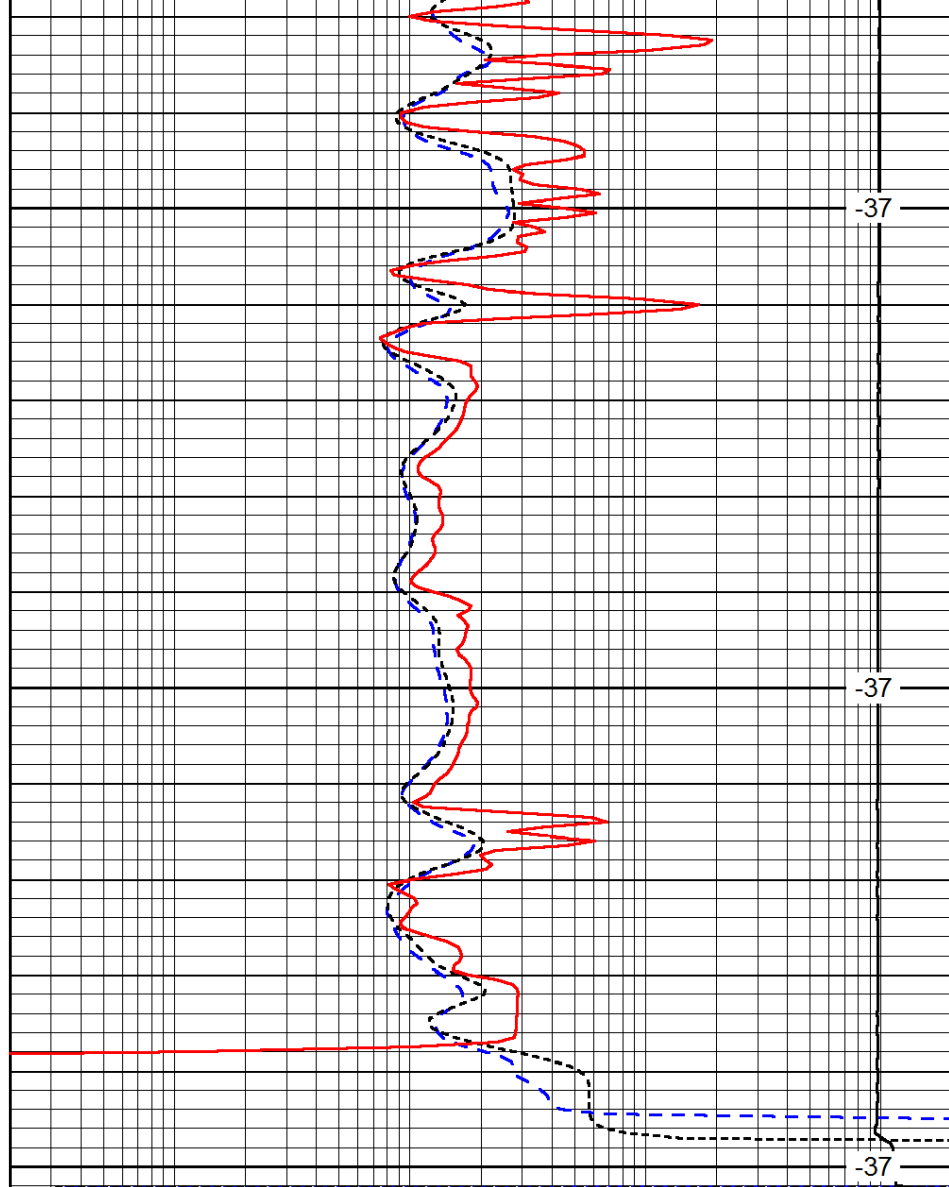


0	Gamma Ray	150
-200	SP (mV)	0
-160	RxoRt	40

2350

2400

2450



-37

-37

-37

0.2	Deep Resistivity	2000
0.2	Medium Resistivity	2000
0.2	Shallow Resistivity	2000
15000	Line Tension	0

LSPD