



Pioneer Energy Services

Dual Compensated Porosity Log

15-015-23,960-00-00

API No.

Company **Vess Oil Corporation**
 Well **Wilson A No.446**
 Field **El Dorado**
 County **Butler** State **Kansas**

Location **330' FNL & 3225' FEL**
 Sec: **8** Twp: **25S** Rge: **5E**

Permanent Datum **Ground Level** Elevation **1389**
 Log Measured From **Kelly Bushing** **6** Ft. Above Perm. Datum
 Drilling Measured From **Kelly Bushing**

Other Services
 DIL
 MEL
 Elevation
 K.B. 1395
 D.F.
 G.L. 1389

Date	11/14/2012	
Run Number	Two	
Type Log	CNL / CDL	
Depth Driller	2447	
Depth Logger	2447	
Bottom Logged Interval	2445	
Top Logged Interval	250	
Type Fluid In Hole	Chemical	
Salinity, PPM CL	800	
Density	9.3	
Level	Full	
Max. Rec. Temp. F	100	
Operating Rig Time	3 1/2 Hours	
Equipment -- Location	17 Days	
Recorded By	C. Desaire	
Witnessed By	Roger Martin	

Borehole Record				Casing Record			
Run No.	Bit	From	To	Size	Wgt.	From	To
1	12.25	00	261	8.625	24#	00	261
2	7.875	261	2447				

<<< Fold Here >>>

All interpretations are opinions based on inferences from electrical or other measurements and we cannot and do not guarantee the accuracy or correctness of any interpretation, and we shall not, except in the case of gross or willful negligence on our part, be liable or responsible for any loss, costs, damages, or expenses incurred or sustained by anyone resulting from any interpretation made by any of our officers, agents or employees. These interpretations are also subject to our general terms and conditions set out in our current Price Schedule.

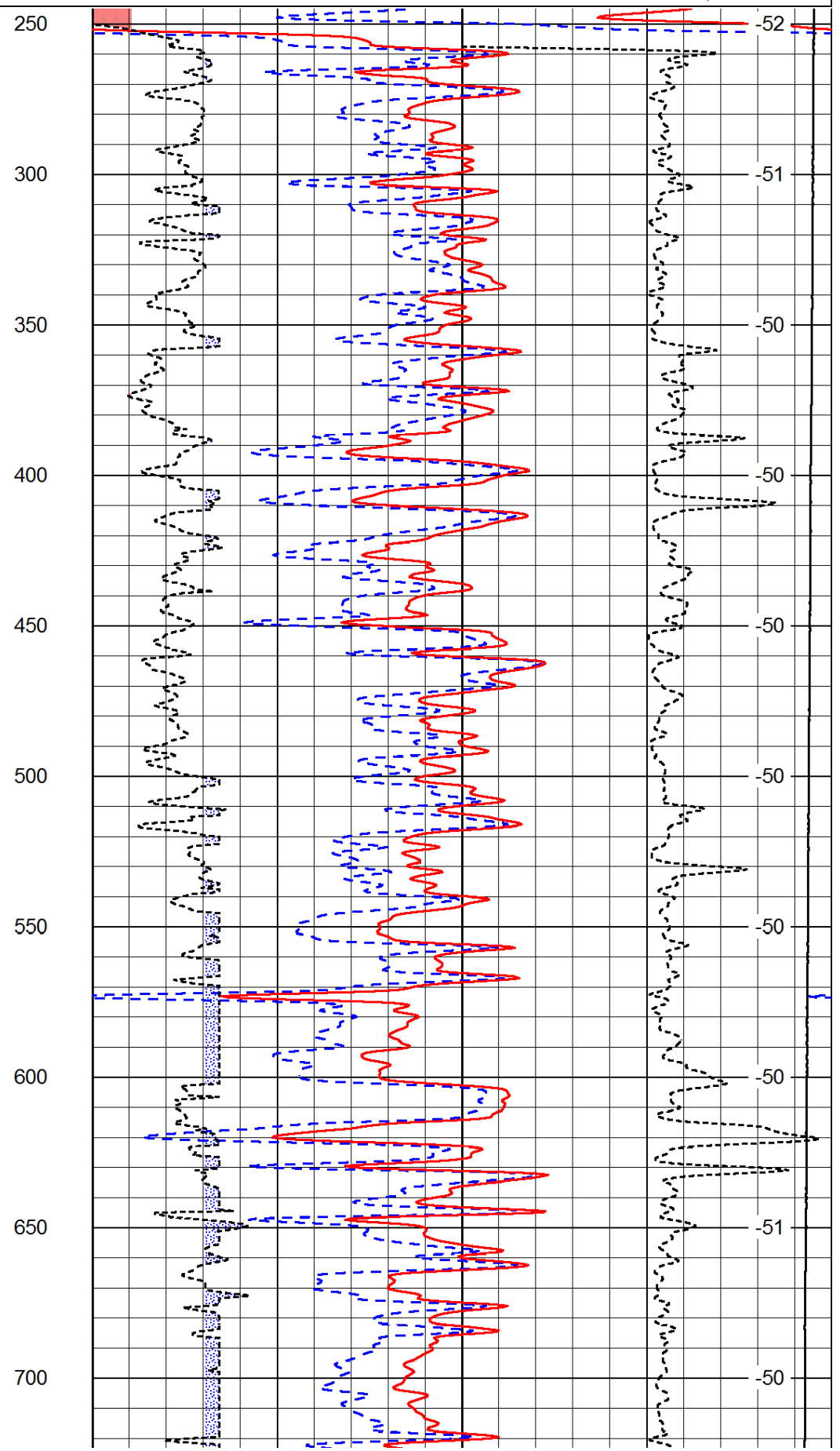
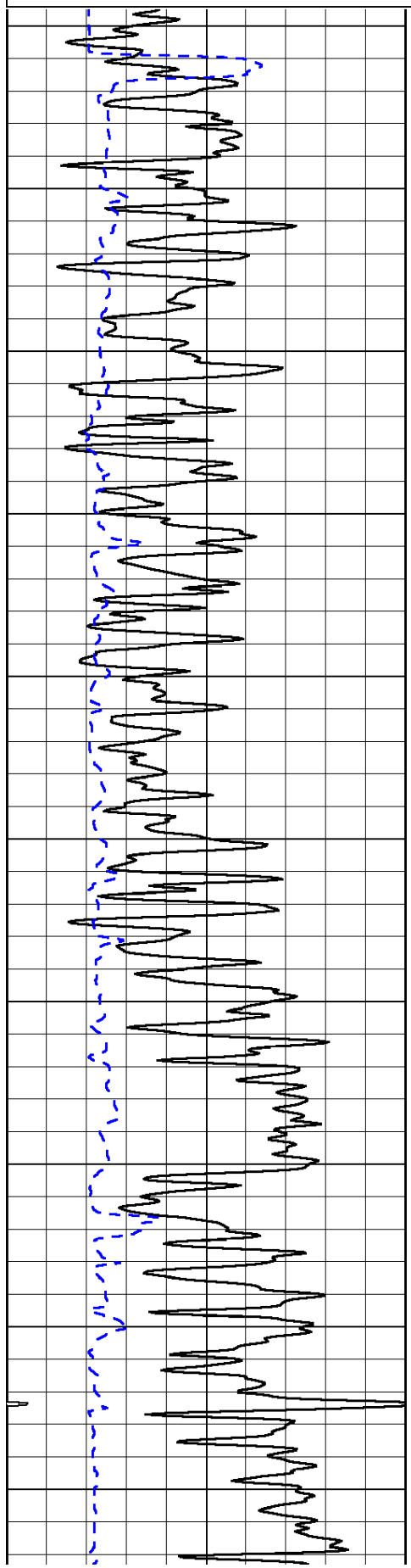
Comments

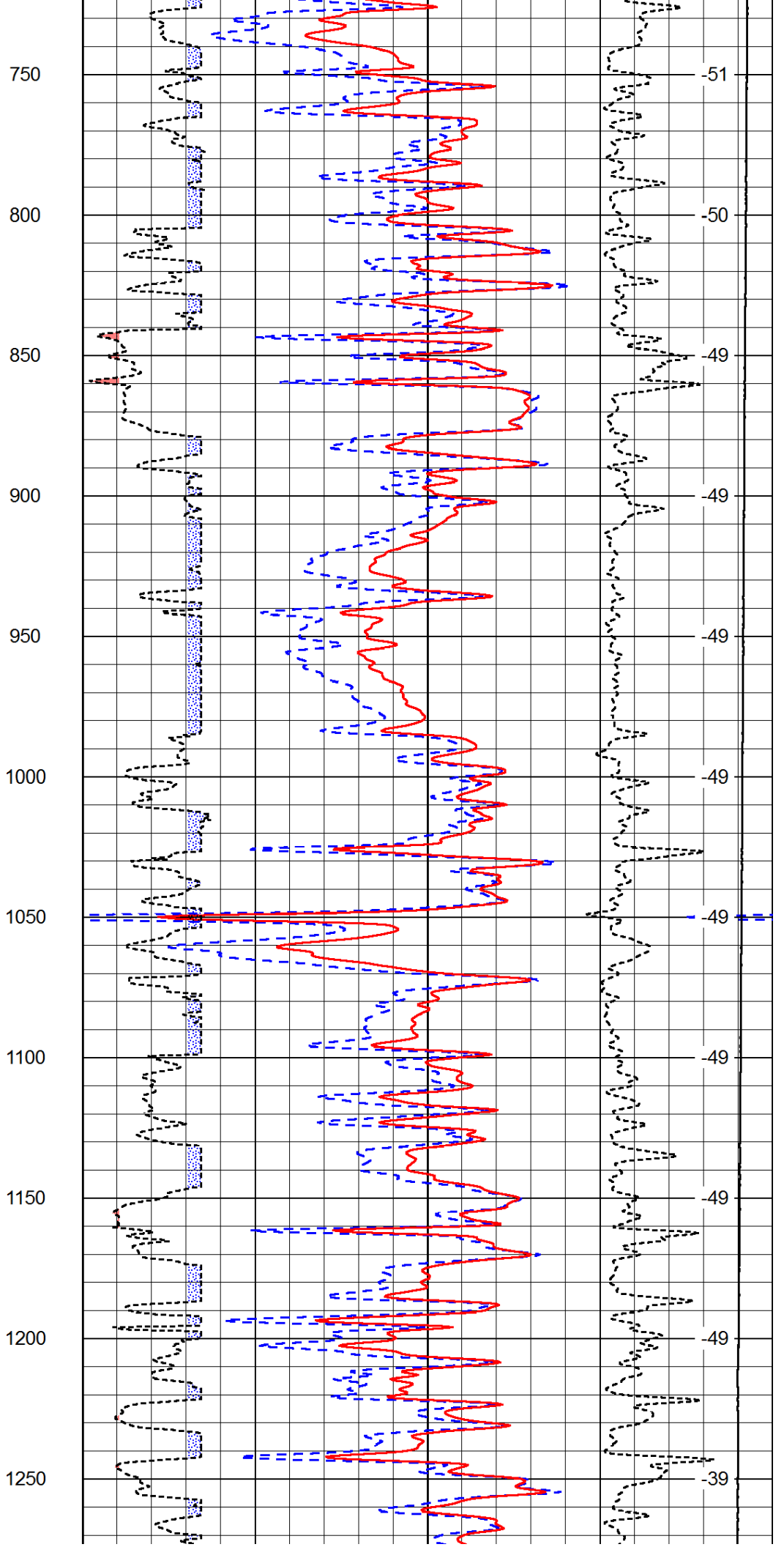
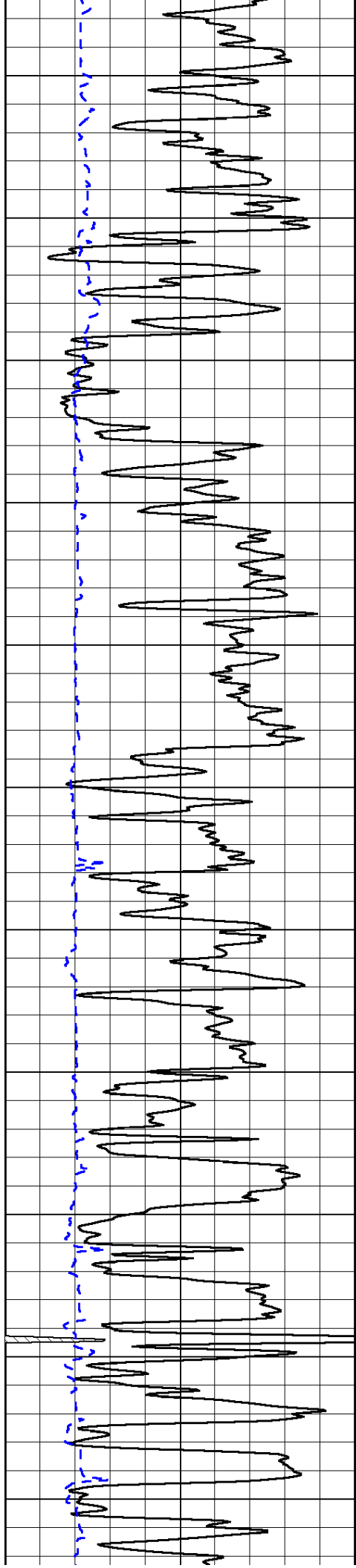
Thank you for using Pioneer Energy Services
 www.pioneer.com
 785 625 3858
 Potwin KS, E to 40 Rd,
 2 E, S, Left at fork, Right at fork, Right at fork

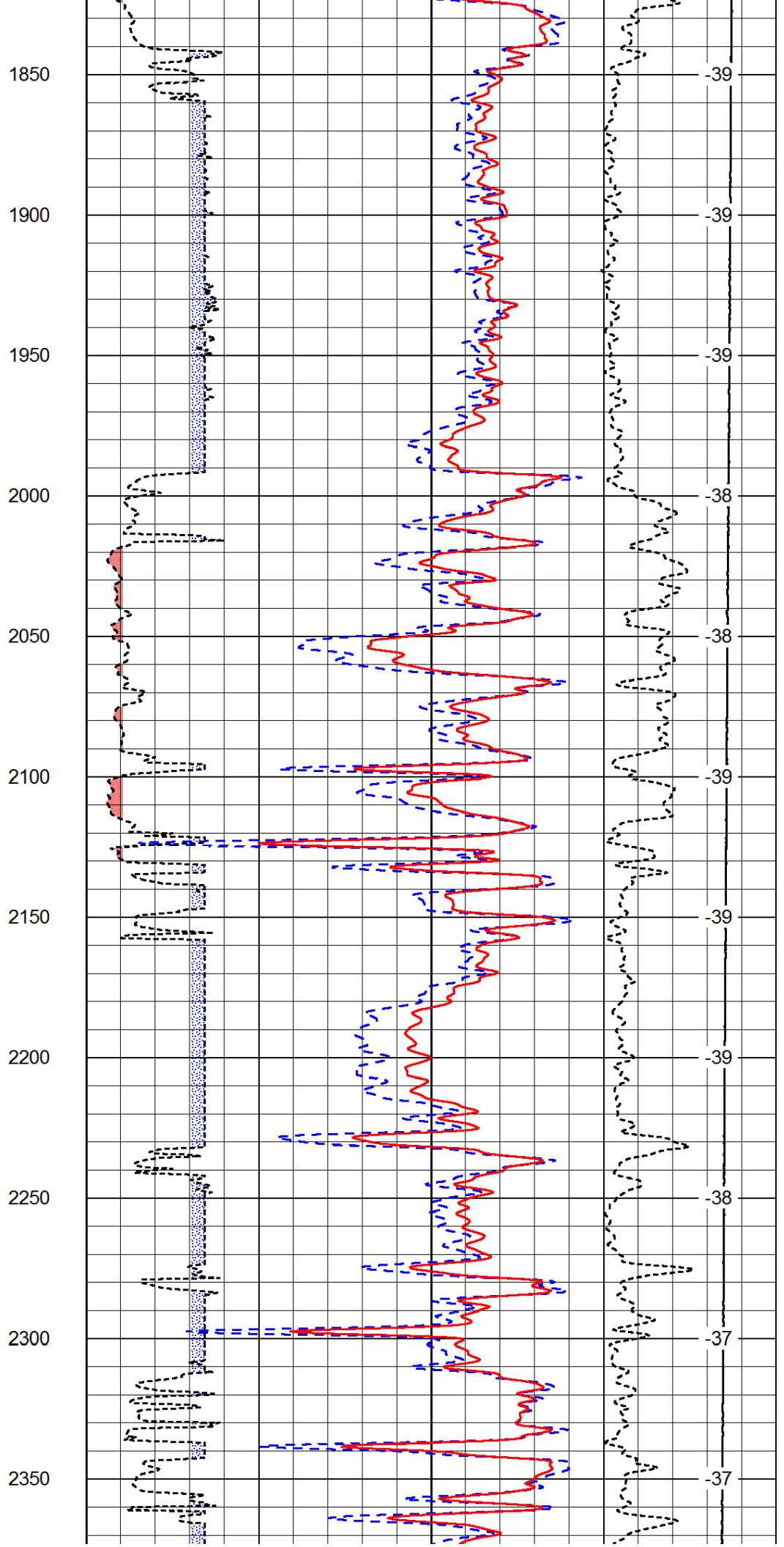
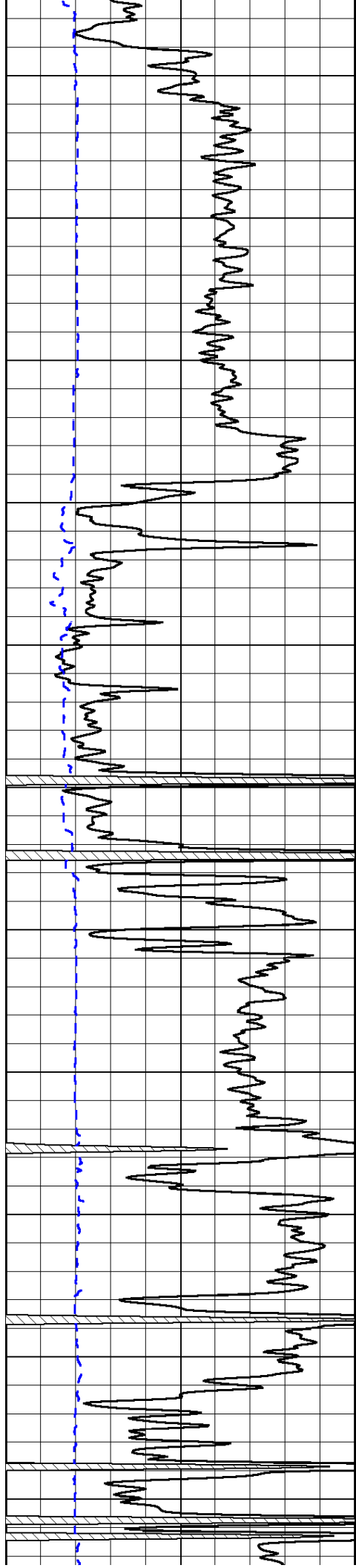
Database File: c:\warrior\data\vess_wilson a #446\vesshd.db
 Dataset Pathname: dil/vesstk
 Presentation Format: cdl
 Dataset Creation: Wed Nov 14 13:01:53 2012
 Charted by: Depth in Feet scaled 1:600

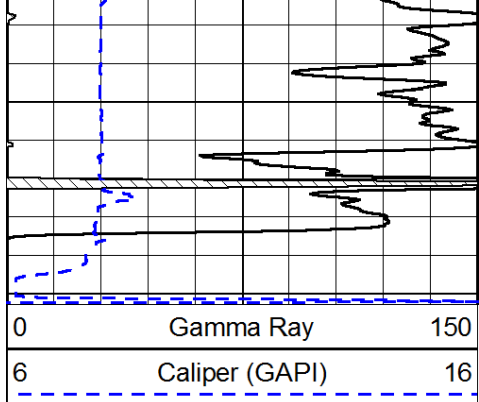
0	Gamma Ray	150
6	Caliper (GAPI)	16

30	Compensated Density		-10
2	Bulk Density		3
15000	Line Tension		0
2.625	DGA	3.425	-0.25
			Correction
			0.25
LSPD			

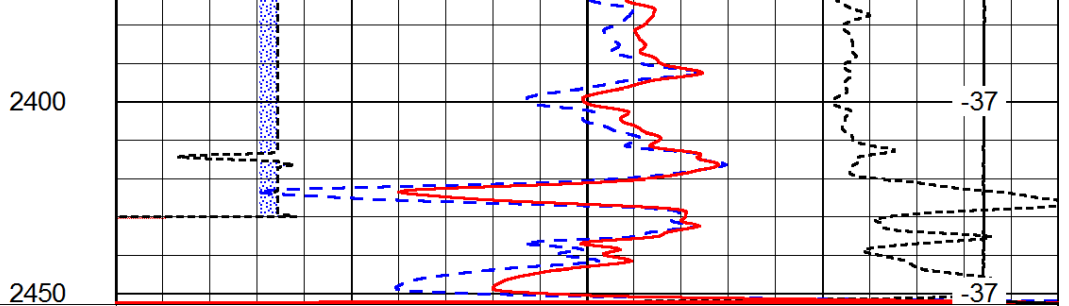






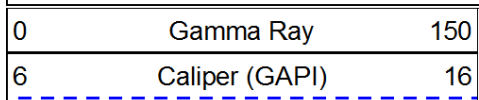


0	Gamma Ray	150
6	Caliper (GAPI)	16



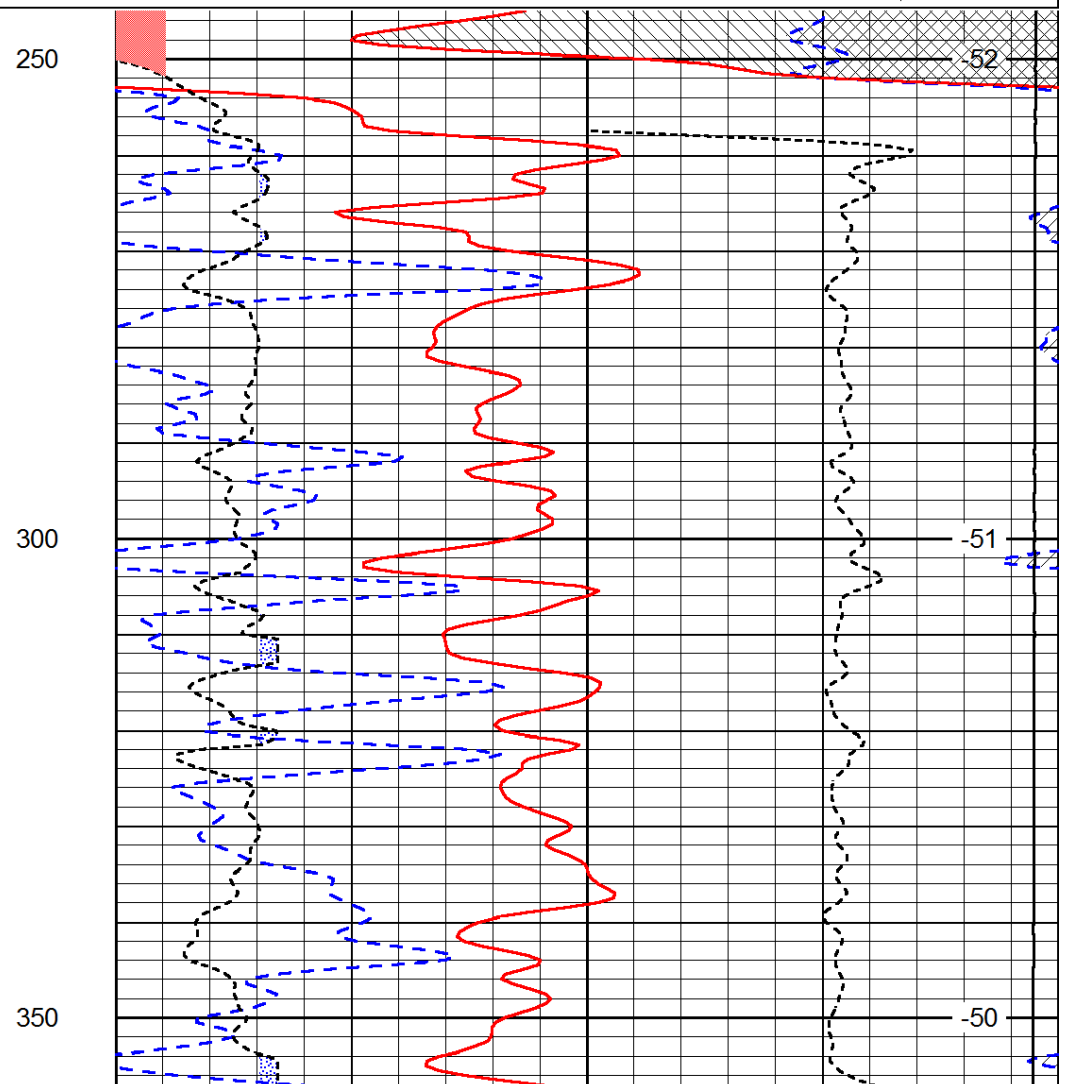
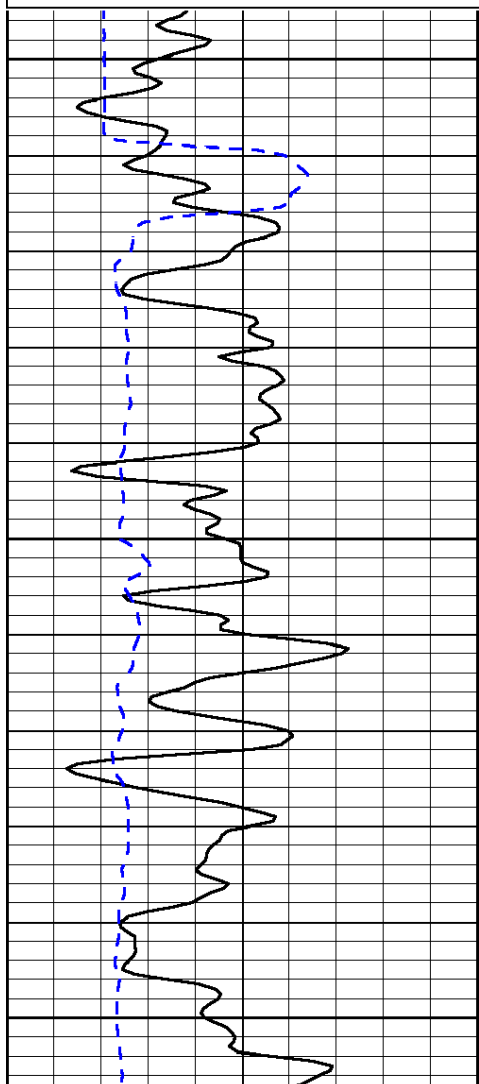
30	Compensated Density		-10
2	Bulk Density		3
15000	Line Tension		0
2.625	DGA	3.425 -0.25	Correction 0.25
LSPD			

Database File: c:\warrior\data\vesse_wilson a #446\vesshd.db
 Dataset Pathname: dil/vesstk
 Presentation Format: cndlspec
 Dataset Creation: Wed Nov 14 13:01:53 2012
 Charted by: Depth in Feet scaled 1:240

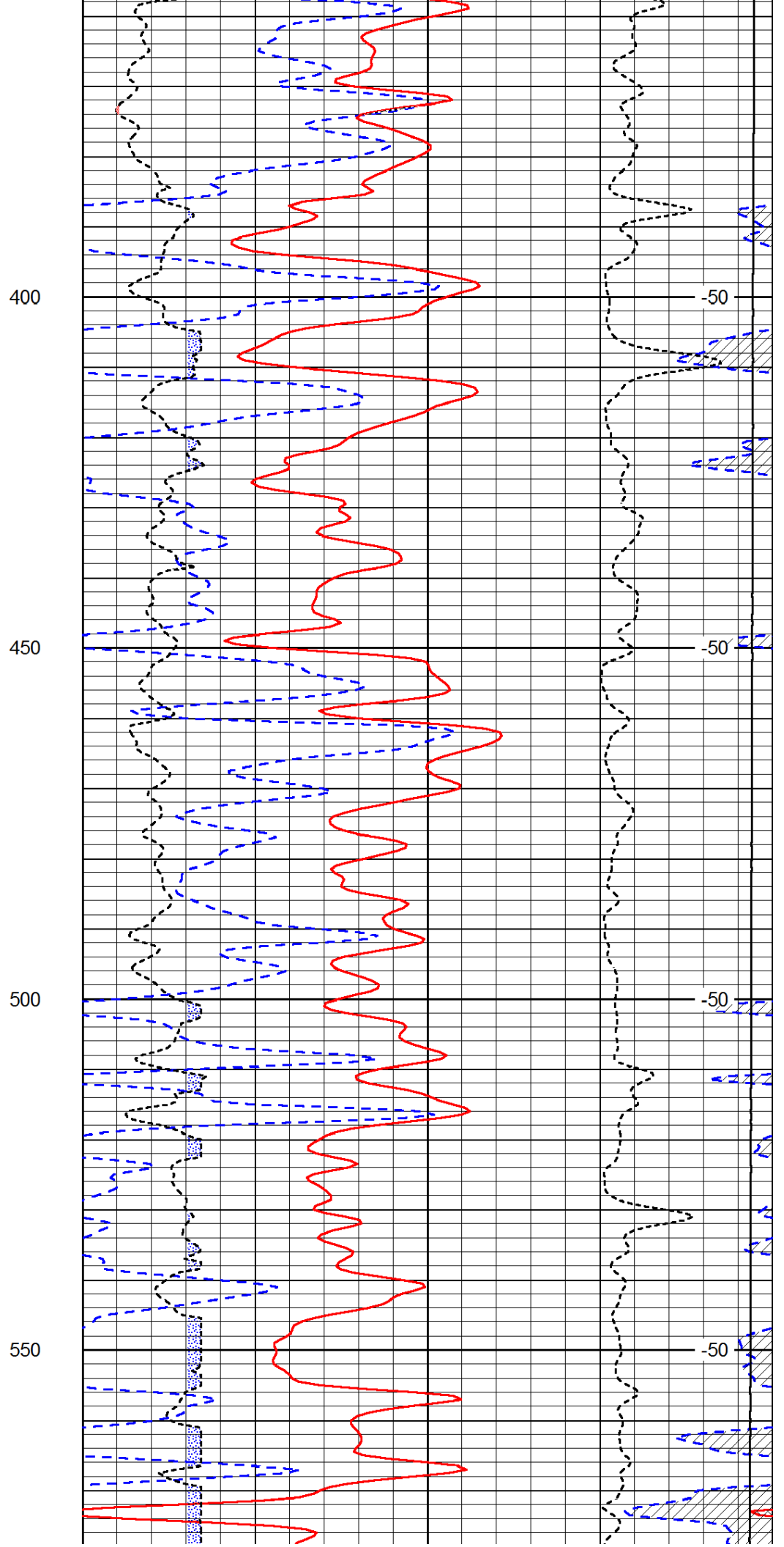
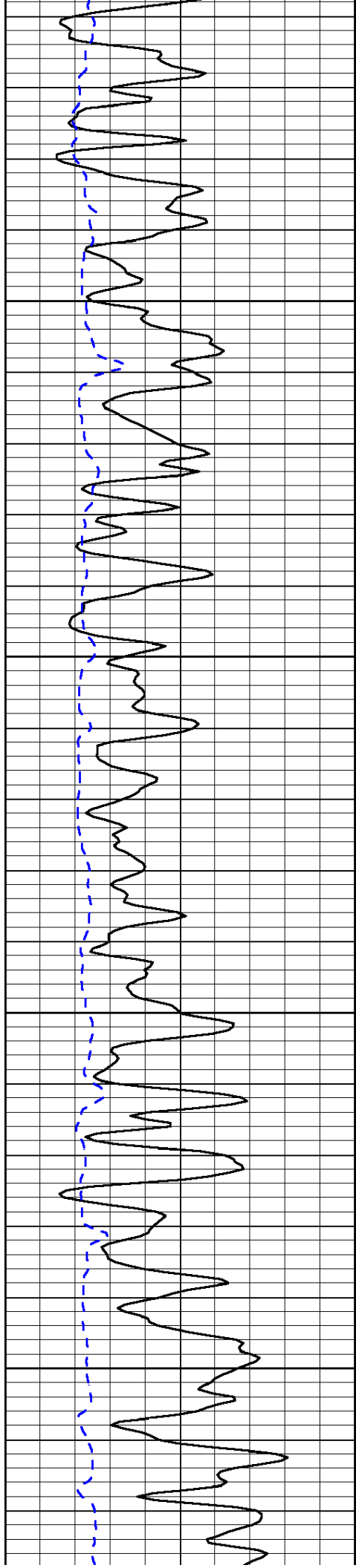


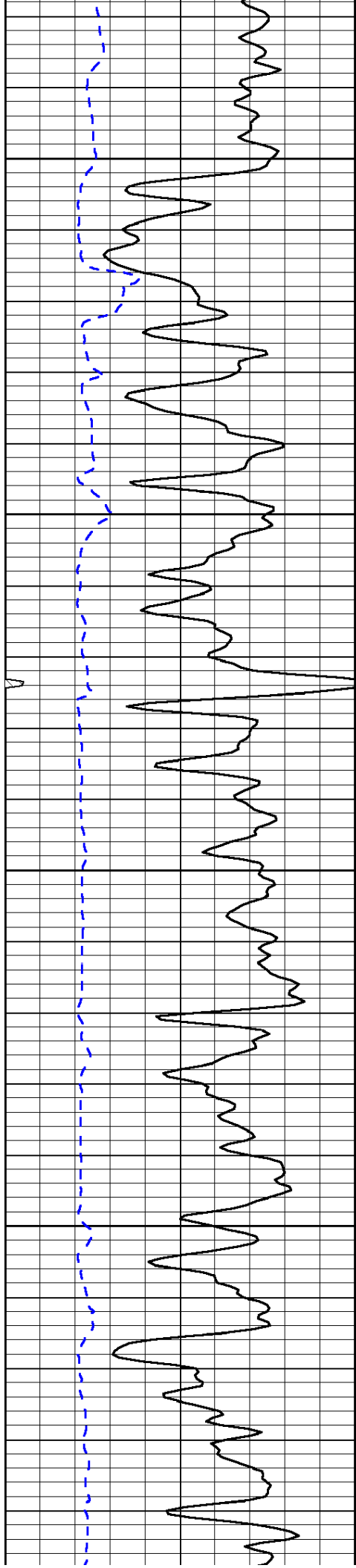
0	Gamma Ray	150
6	Caliper (GAPI)	16

30	Compensated Neutron (Limestone)		-10
30	Compensated Density (Limestone)		-10
2.625	DGA	3.425 -0.25	Correction 0.25
15000	Line Tension		0
LSPD			



250	Compensated Neutron (Limestone)		-52
300	Compensated Density (Limestone)		-51
350	Line Tension		-50



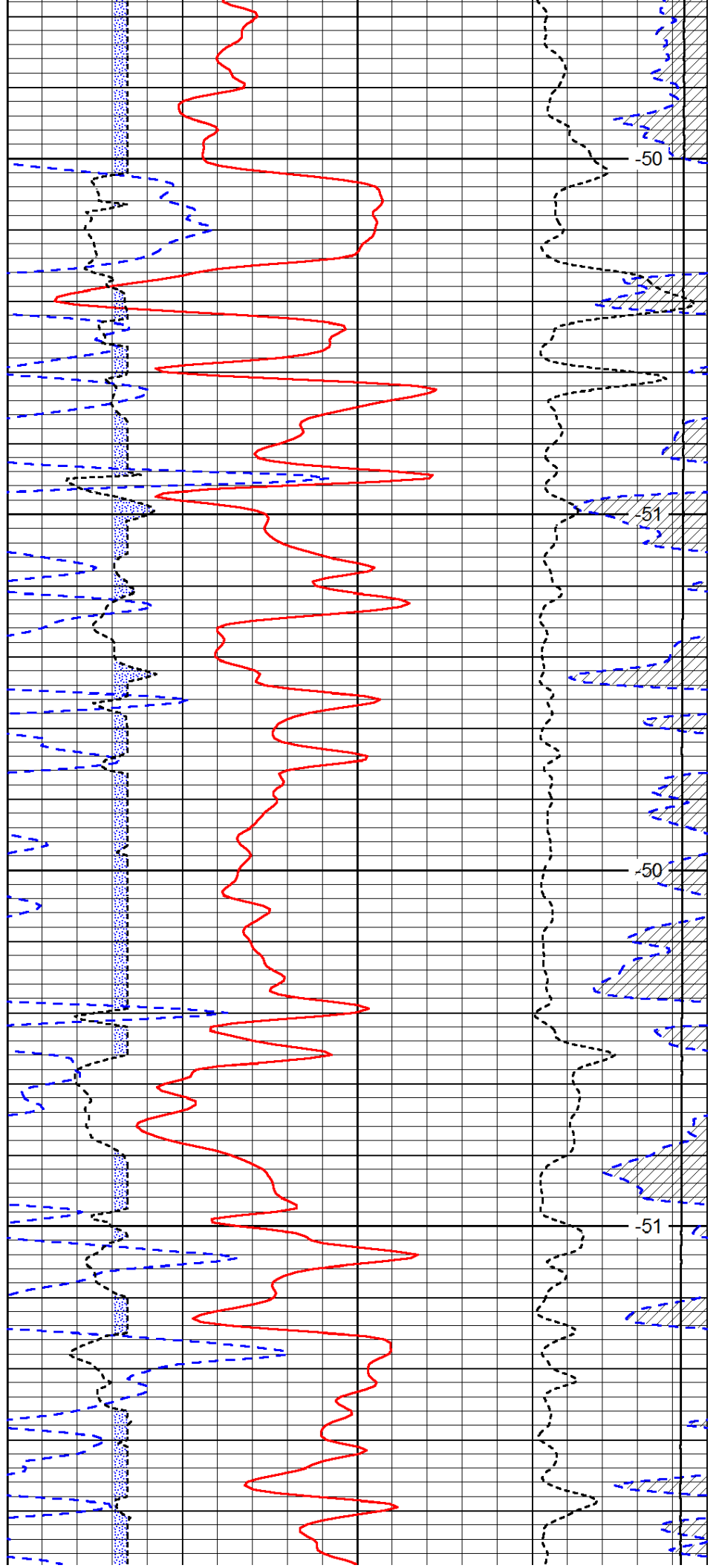


600

650

700

750

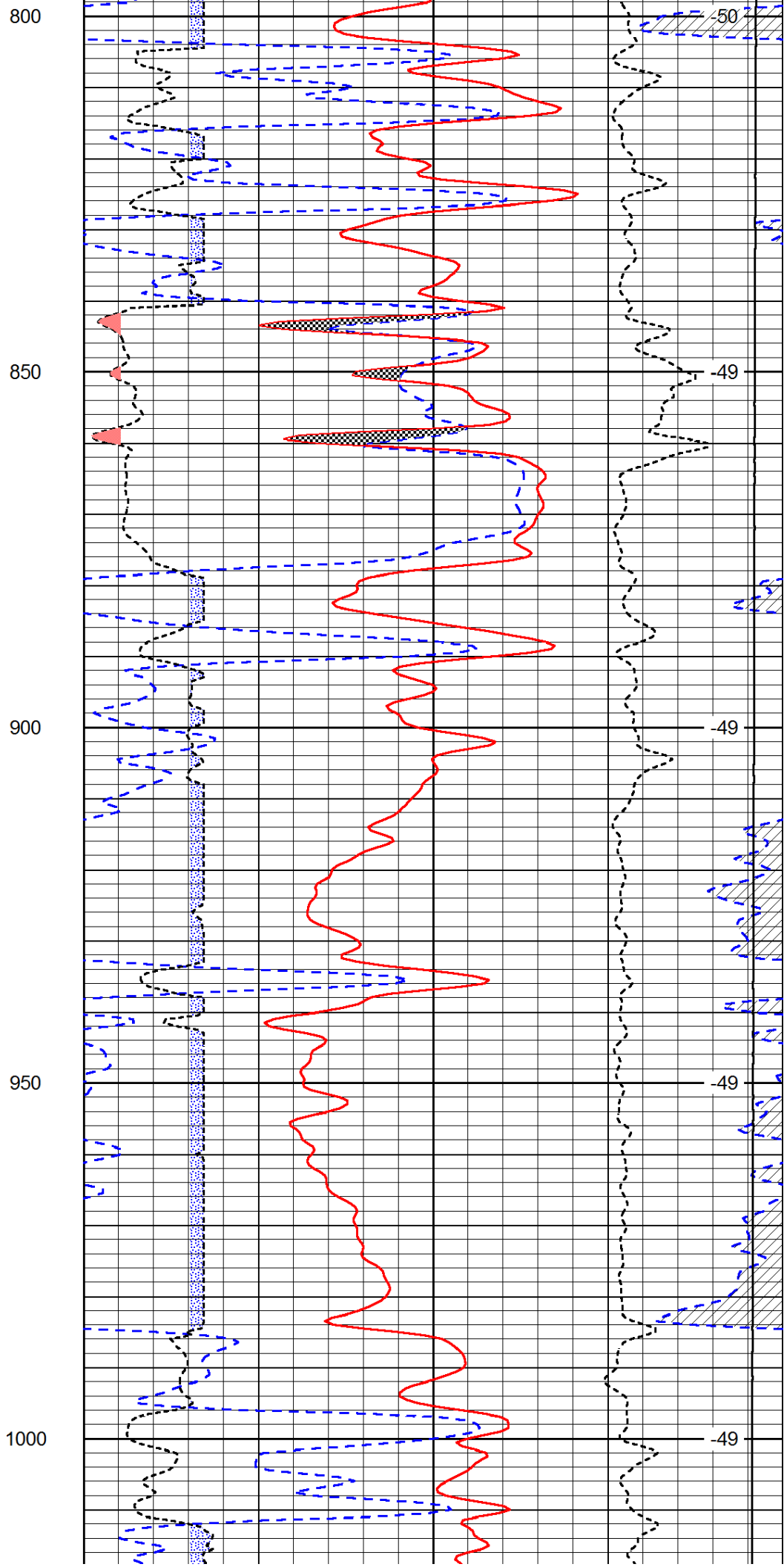
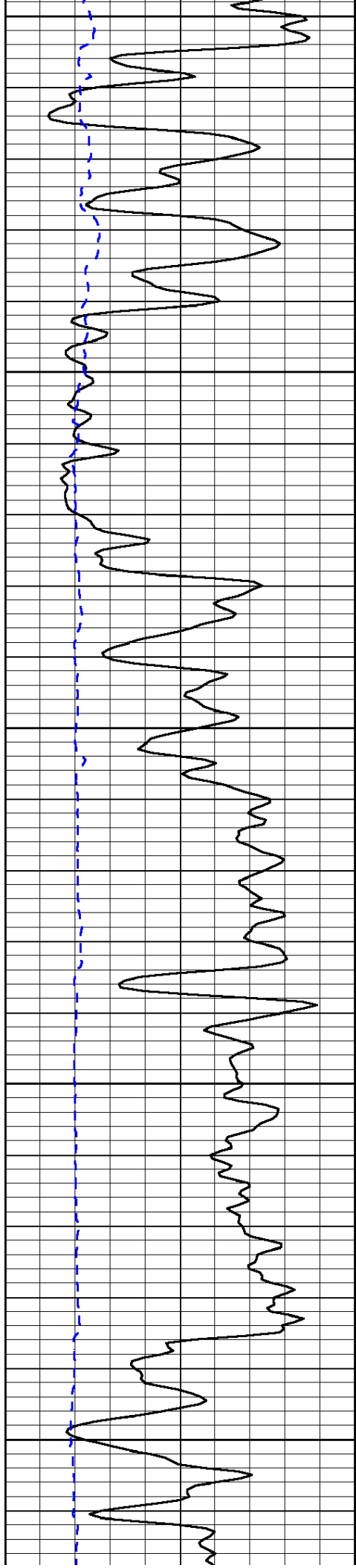


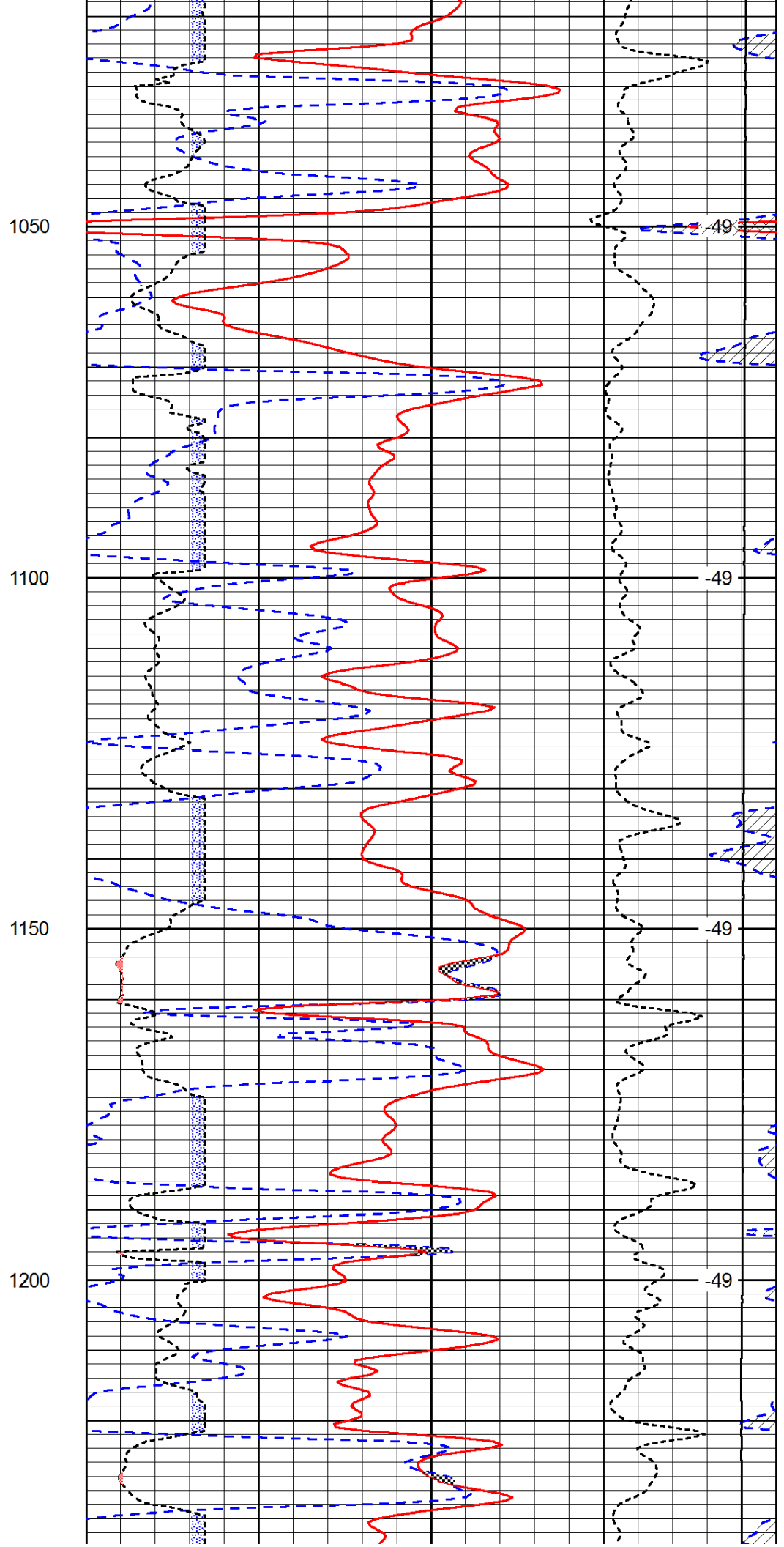
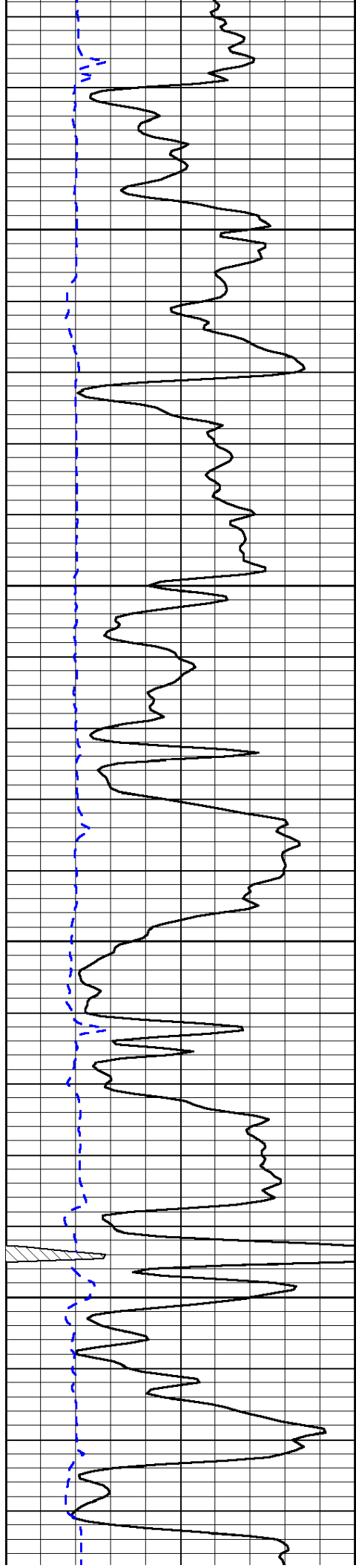
-50

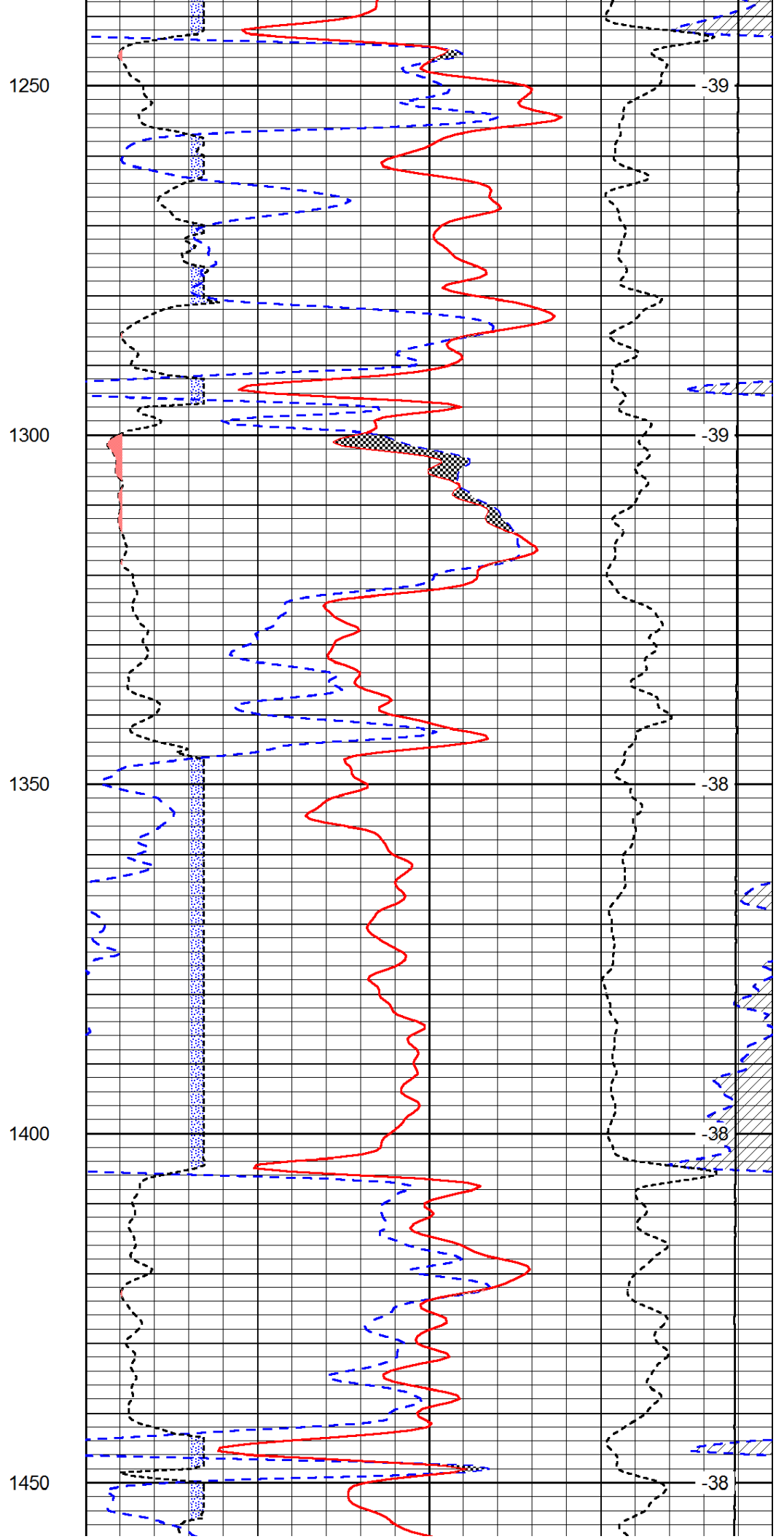
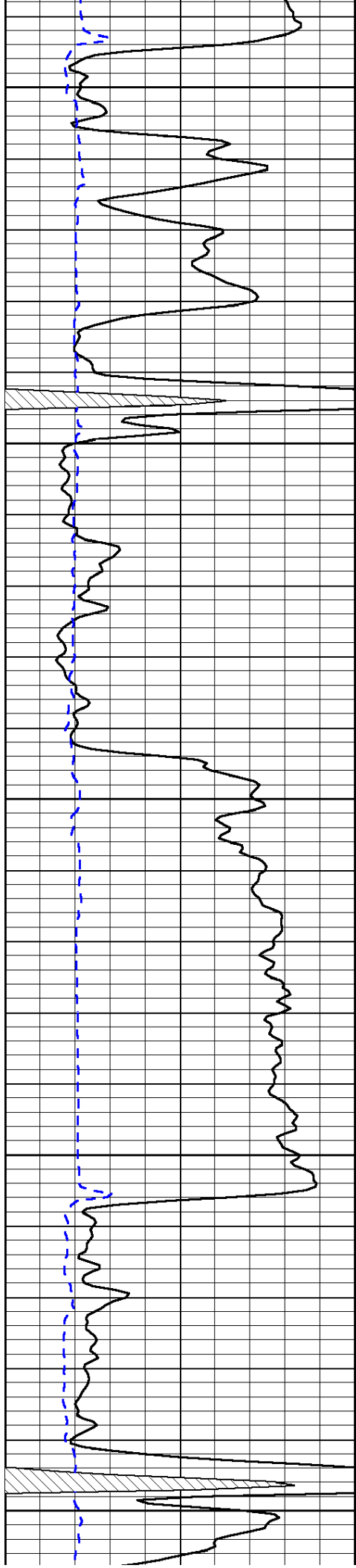
-51

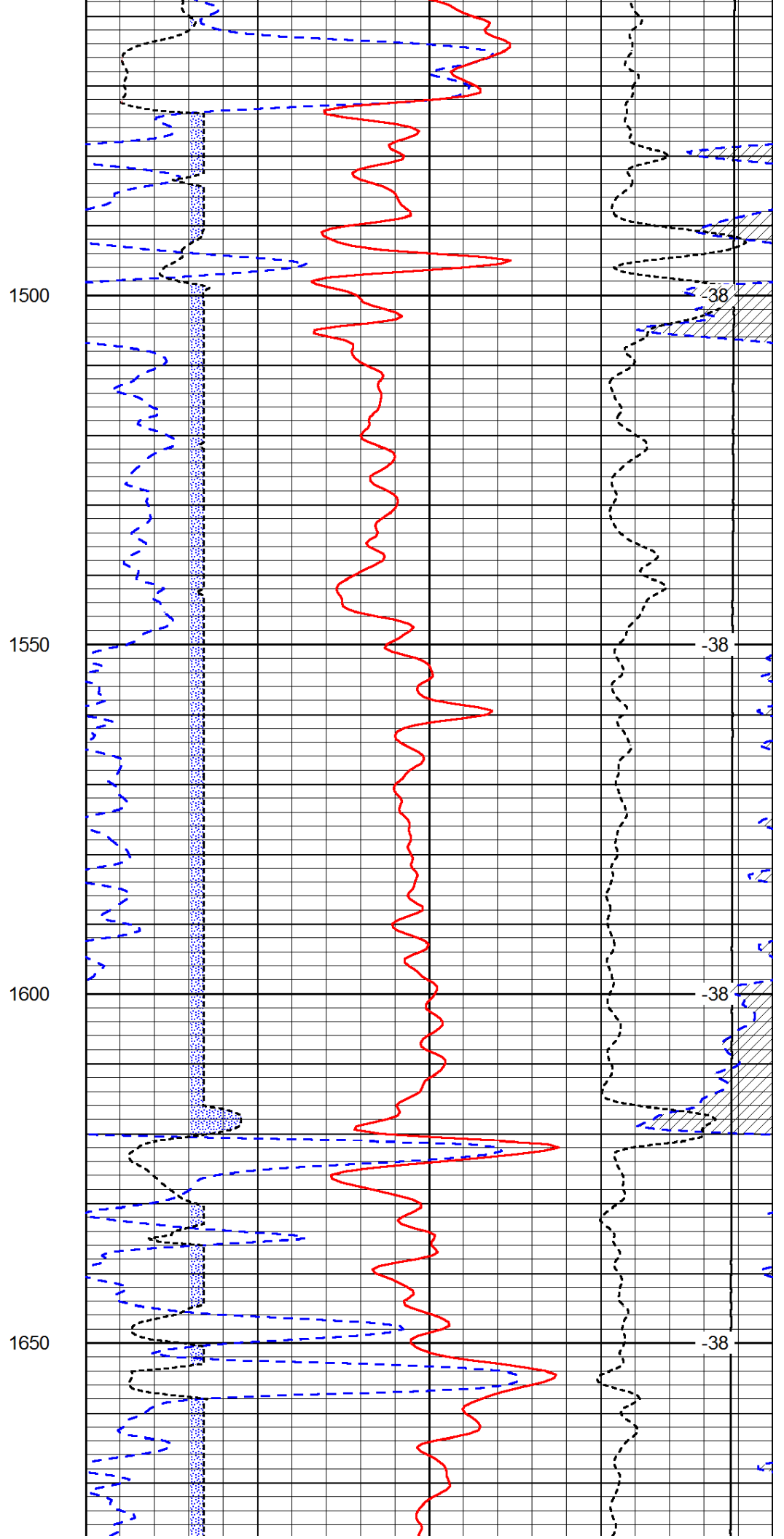
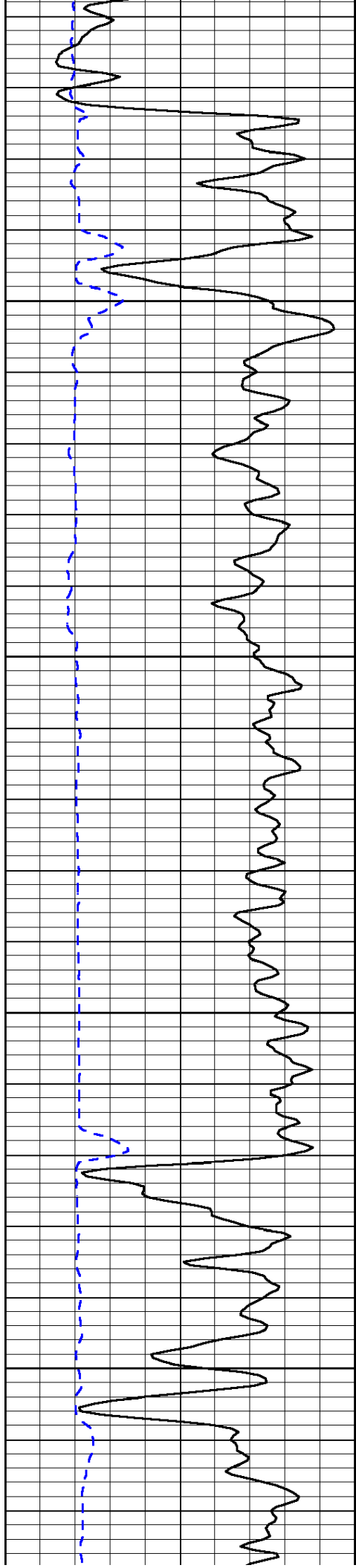
-50

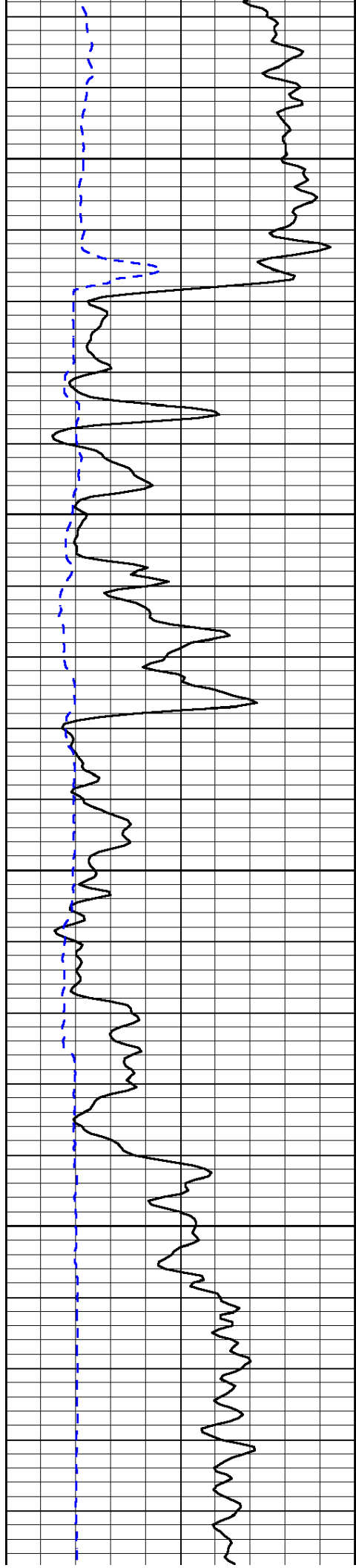
-51









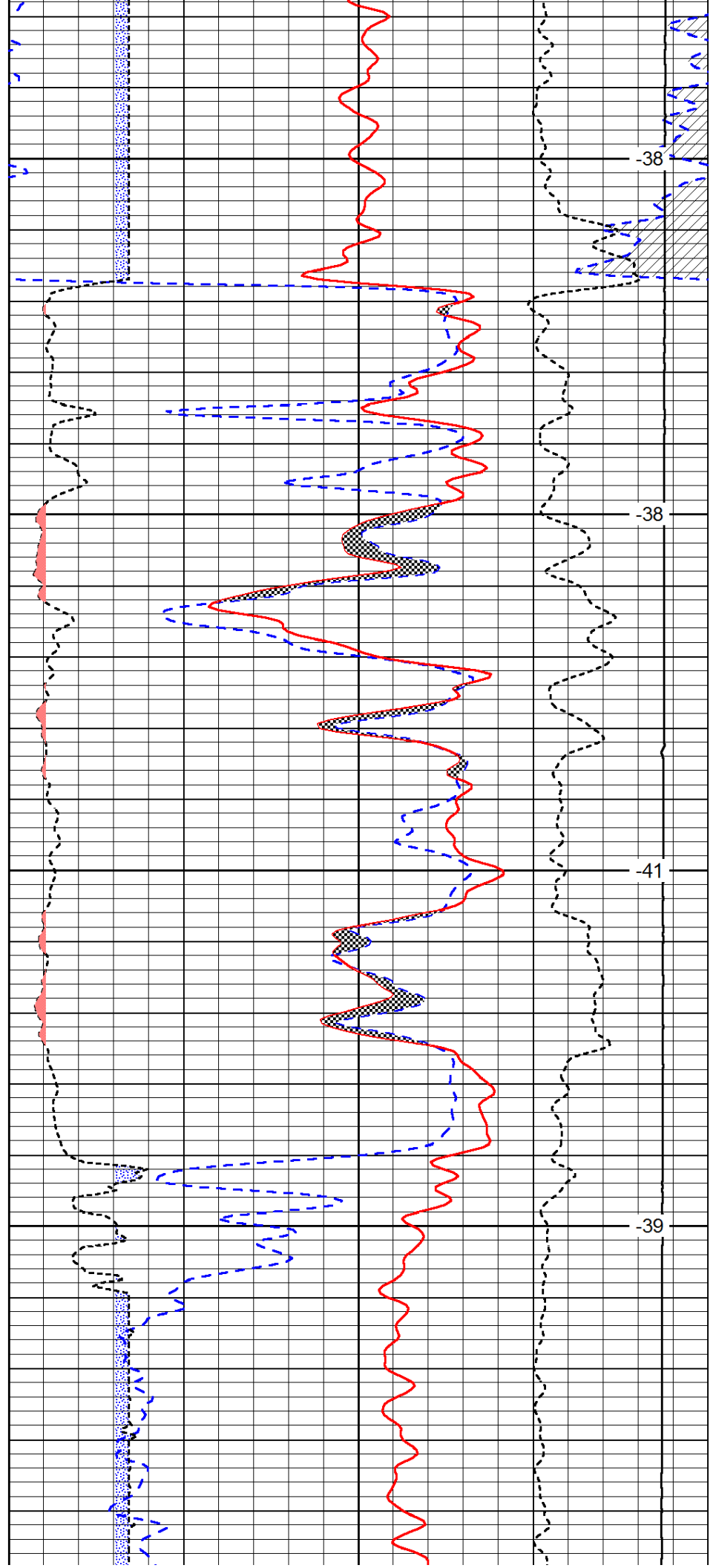


1700

1750

1800

1850

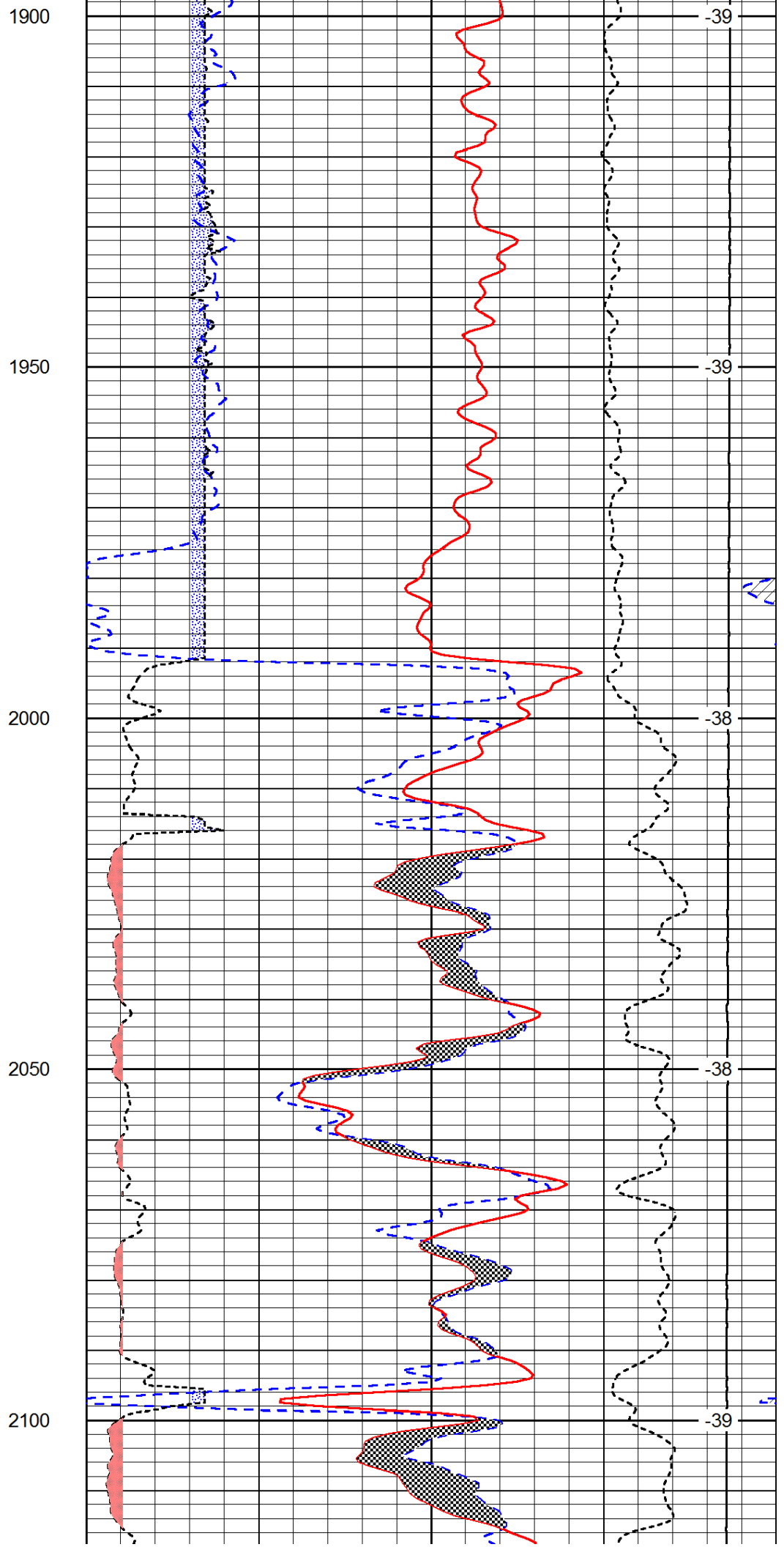
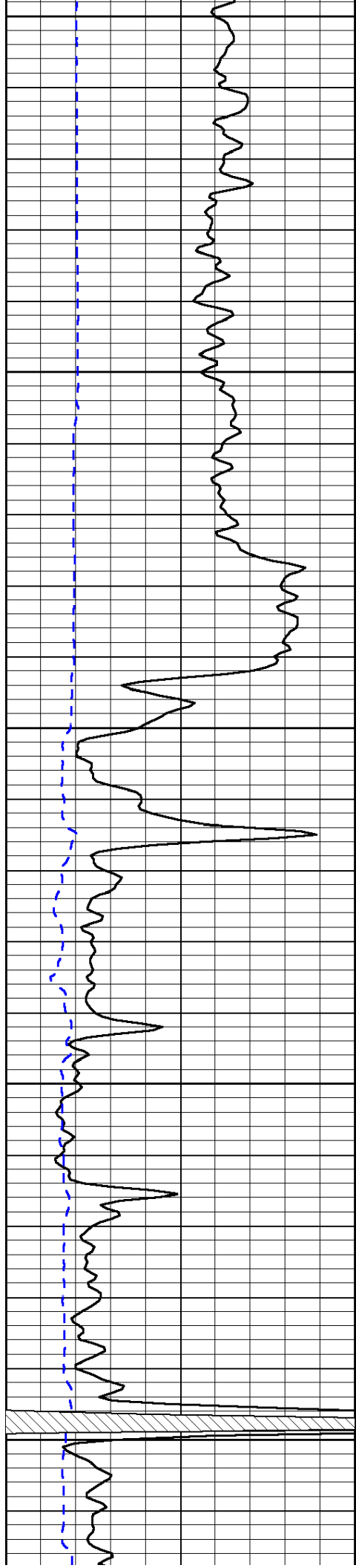


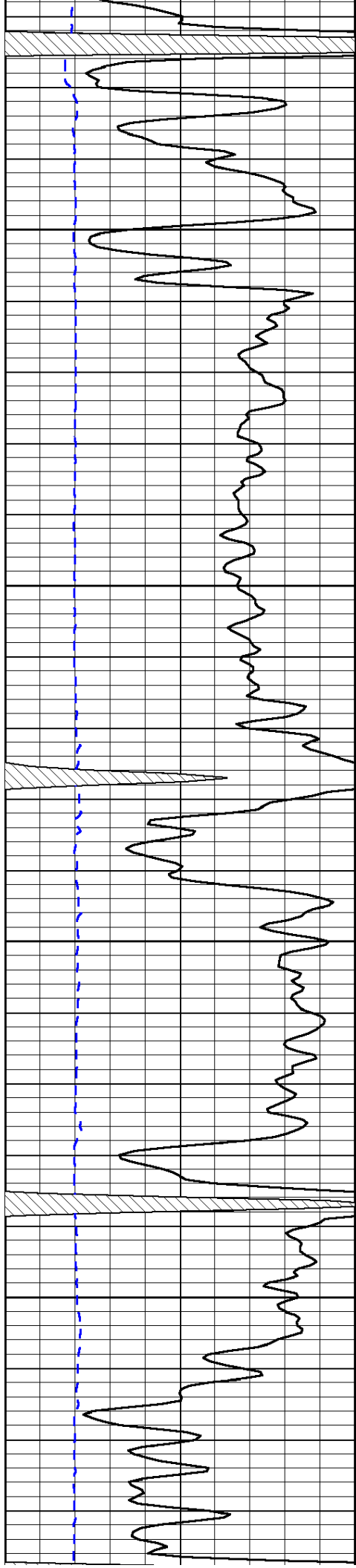
-38

-38

-41

-39



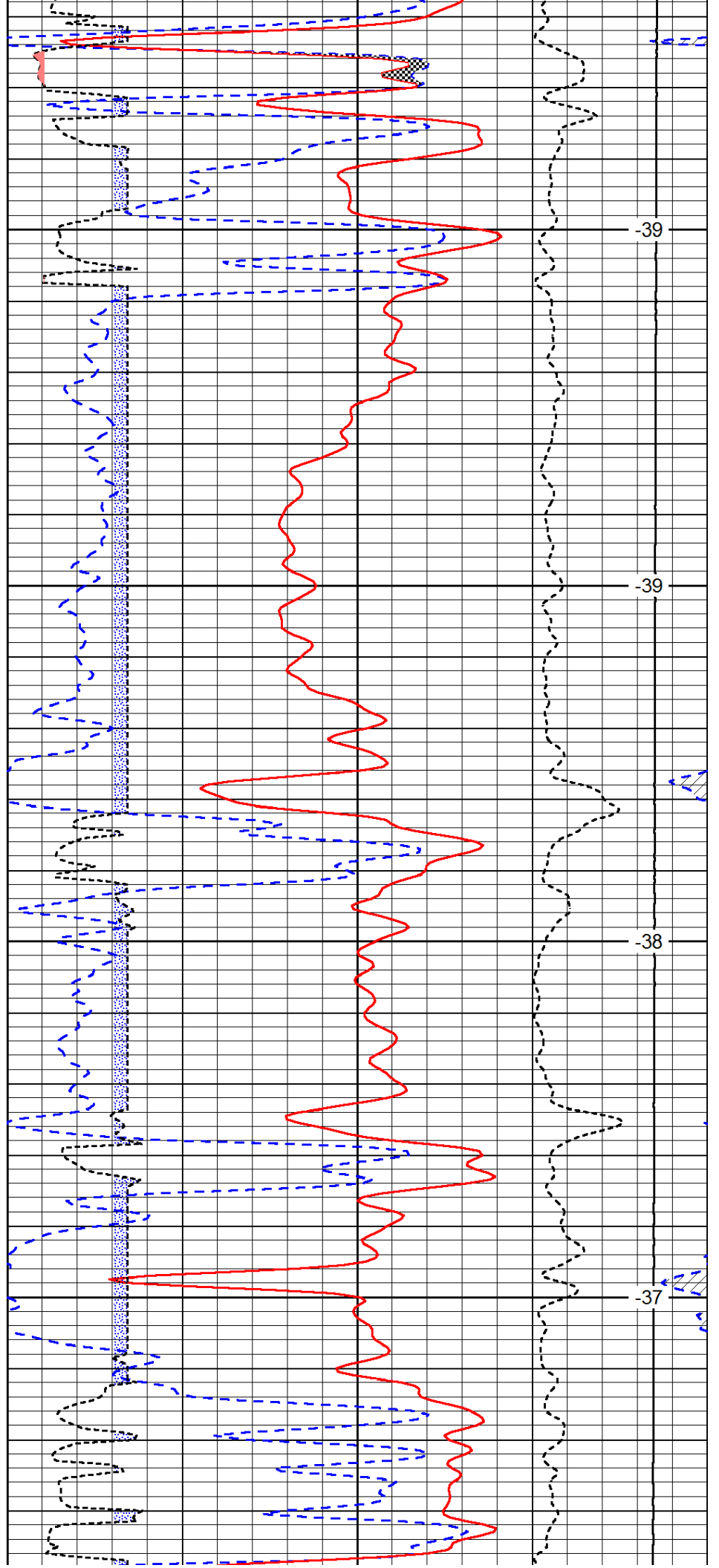


2150

2200

2250

2300



-39

-39

-38

-37

