



Pioneer Energy Services

Microresistivity Log

15-015-23,960-00-00

API No.

Company **Vess Oil Corporation**
 Well **Wilson A No.446**
 Field **El Dorado**
 County **Butler** State **Kansas**

Location **330' FNL & 3225' FEL**

Sec: **8** Twp: **25S** Rge: **5E**

Other Services
 CNL/CDL
 DIL

Permanent Datum **Ground Level** Elevation **1389**
 Log Measured From **Kelly Bushing** **6** Ft. Above Perm. Datum
 Drilling Measured From **Kelly Bushing**

Elevation
 K.B. 1395
 D.F. 1389
 G.L. 1389

Date	11/14/2012	
Run Number	Three	
Depth Driller	2447	
Depth Logger	2447	
Bottom Logged Interval	2446	
Top Log Interval	250	
Casing Driller	8.625 @ 261	
Casing Logger	258	
Bit Size	7.875	
Type Fluid in Hole	Chemical	
Salinity,ppm CL	800	
Density / Viscosity	9.3 39	
pH / Fluid Loss	9.5 9.2	
Source of Sample	Flowline	
Rm @ Meas. Temp	1.85 @ 58	
Rmf @ Meas. Temp	1.39 @ 58	
Rmc @ Meas. Temp	2.5 @ 58	
Source of Rmf / Rmc	Charts	
Rm @ BHT	1.07 @ 100	
Operating Rig Time	3 1/2 Hours	
Max Rec. Temp. F	100	
Equipment Number	17	
Location	Hays	
Recorded By	C. Desaire	
Witnessed By	Roger Martin	

<<< Fold Here >>>

All interpretations are opinions based on inferences from electrical or other measurements and we cannot and do not guarantee the accuracy or correctness of any interpretation, and we shall not, except in the case of gross or willful negligence on our part, be liable or responsible for any loss, costs, damages, or expenses incurred or sustained by anyone resulting from any interpretation made by any of our officers, agents or employees. These interpretations are also subject to our general terms and conditions set out in our current Price Schedule.

Comments

Thank you for using Pioneer Energy Services
www.pioneerenergy.com
 785 625 3858

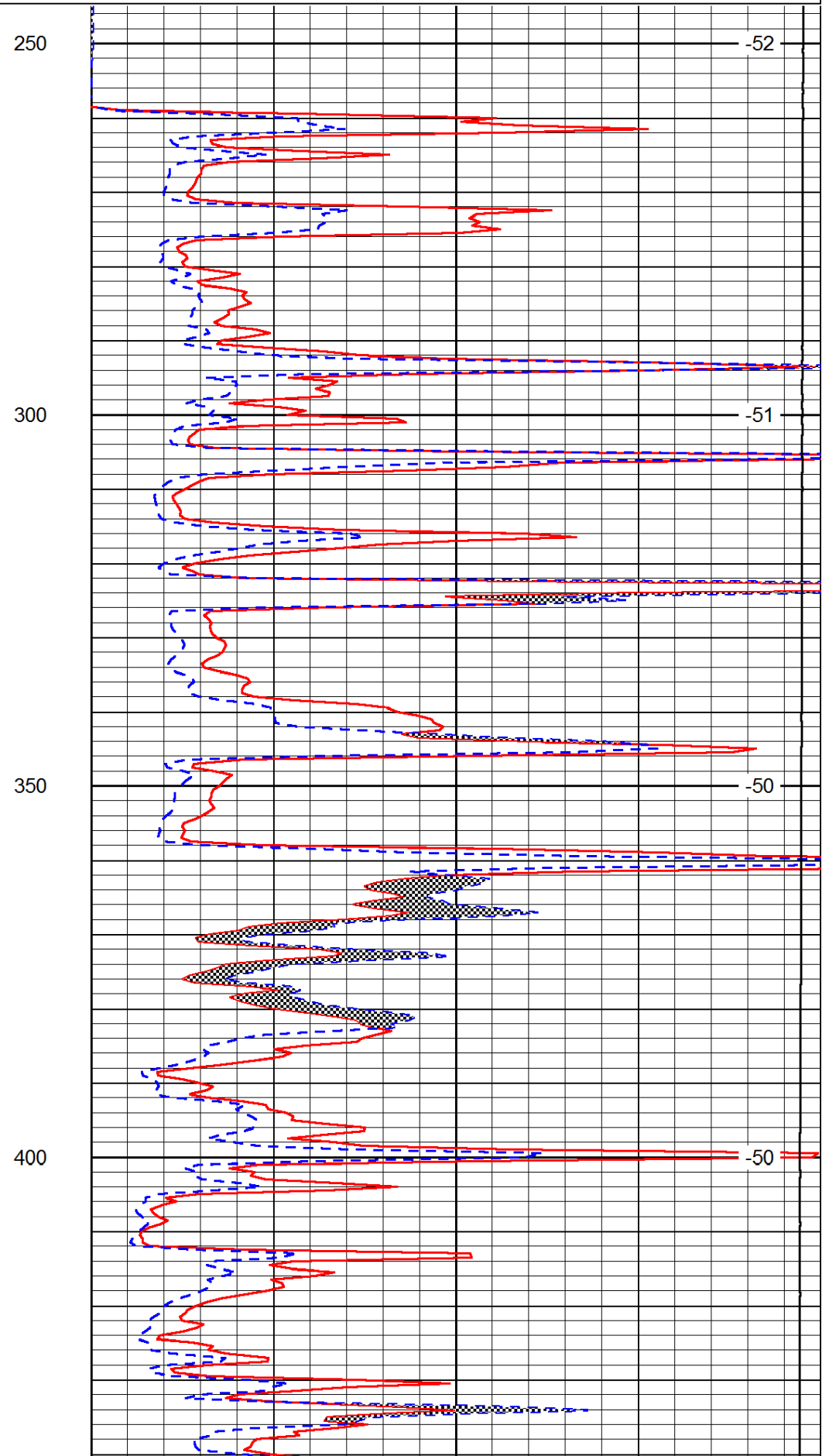
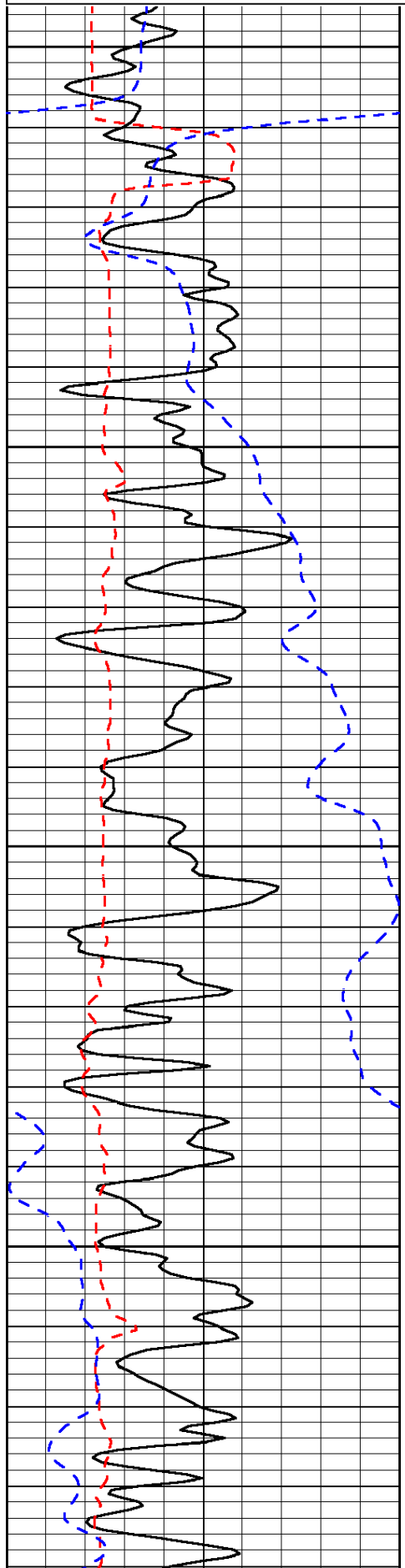
Potwin KS, E to 40 Rd,
 2 E, S, Left at fork, Right at fork, Right at fork

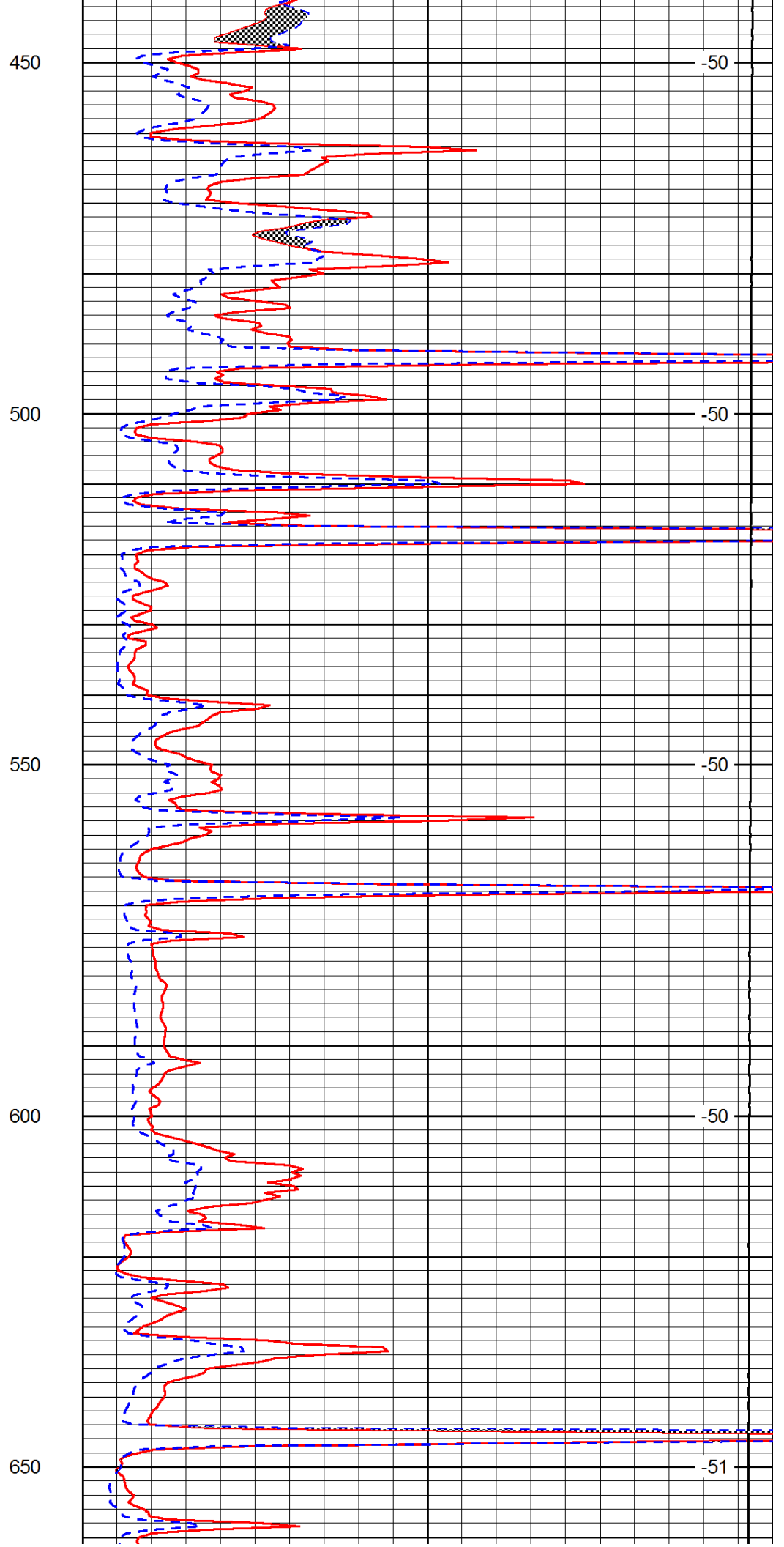
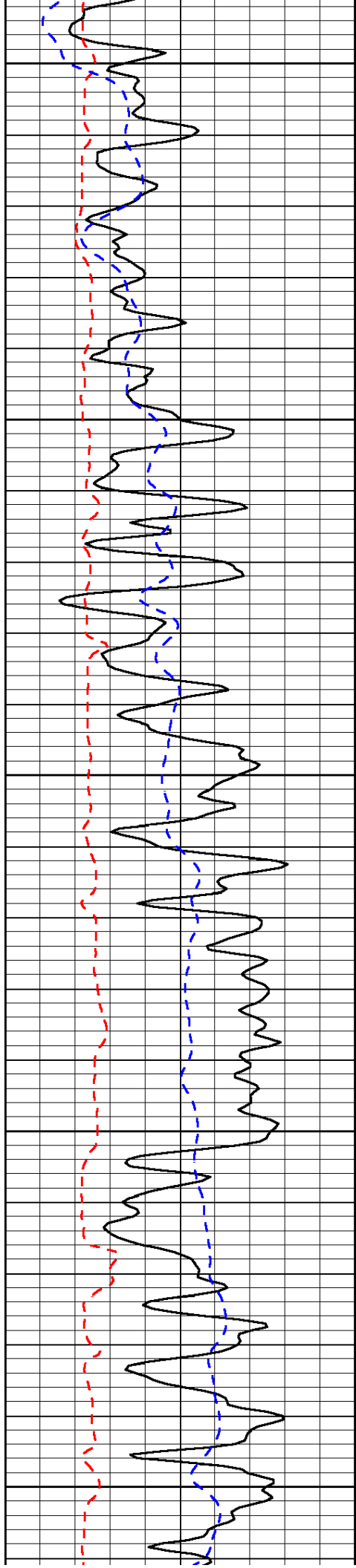
Database File: c:\warrior\data\vess_wilson a #446\vesshd.db
 Dataset Pathname: dil/vesstk
 Presentation Format: micro
 Dataset Creation: Wed Nov 14 13:01:53 2012
 Charted by: Depth in Feet scaled 1:240

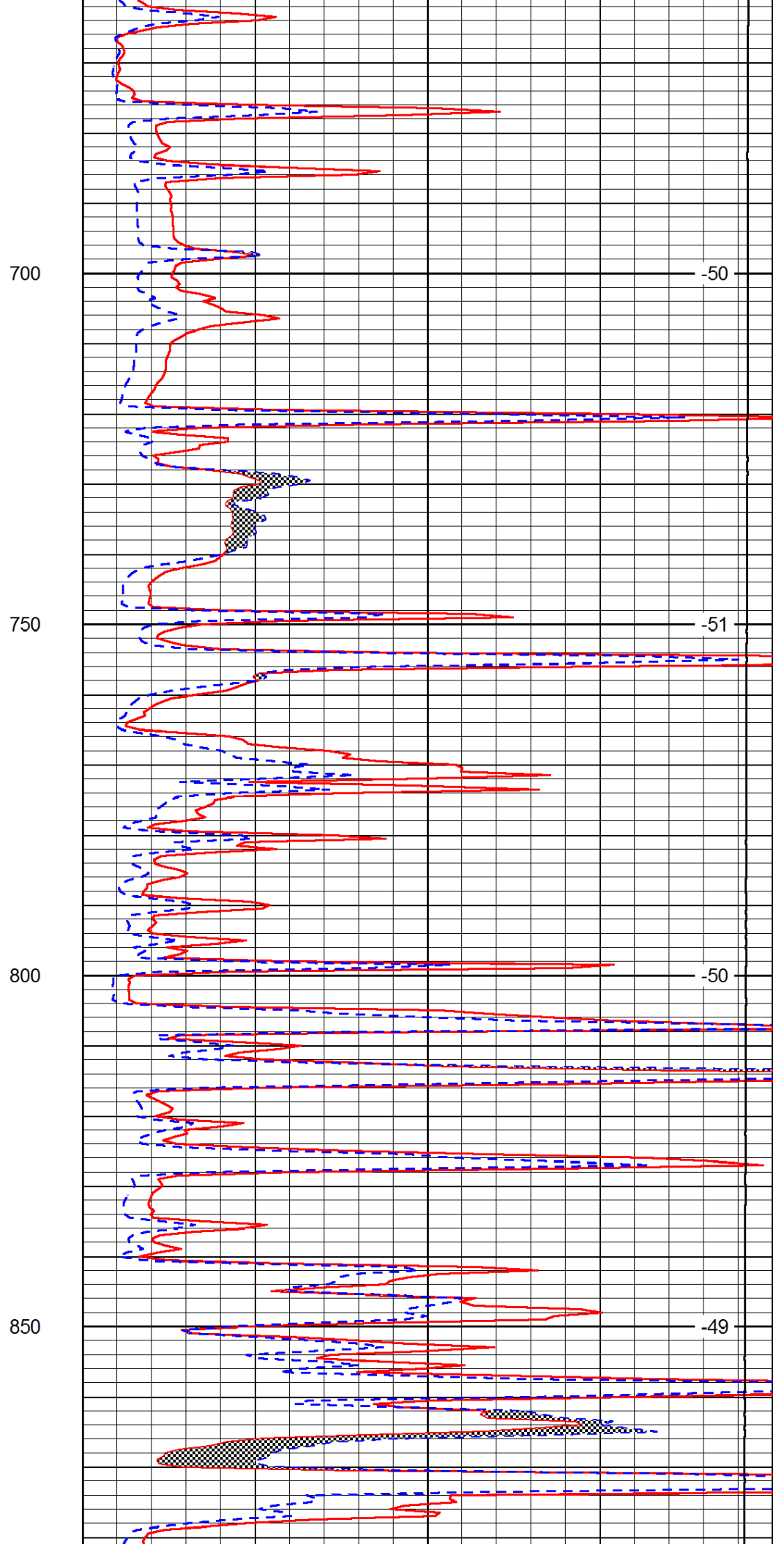
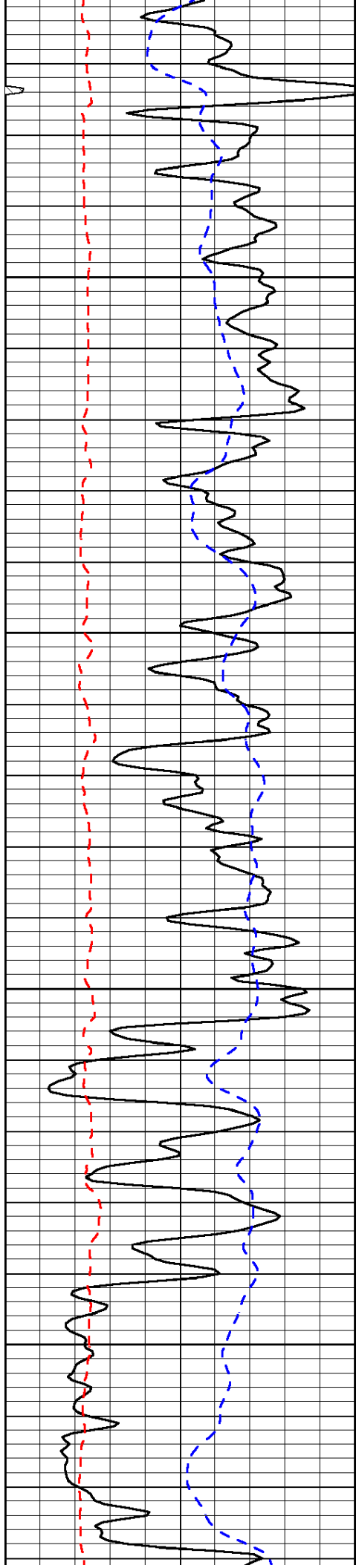
0	Gamma Ray	150
6	Micro Log Caliper (GAPI)	16
-200	SP (mV)	0

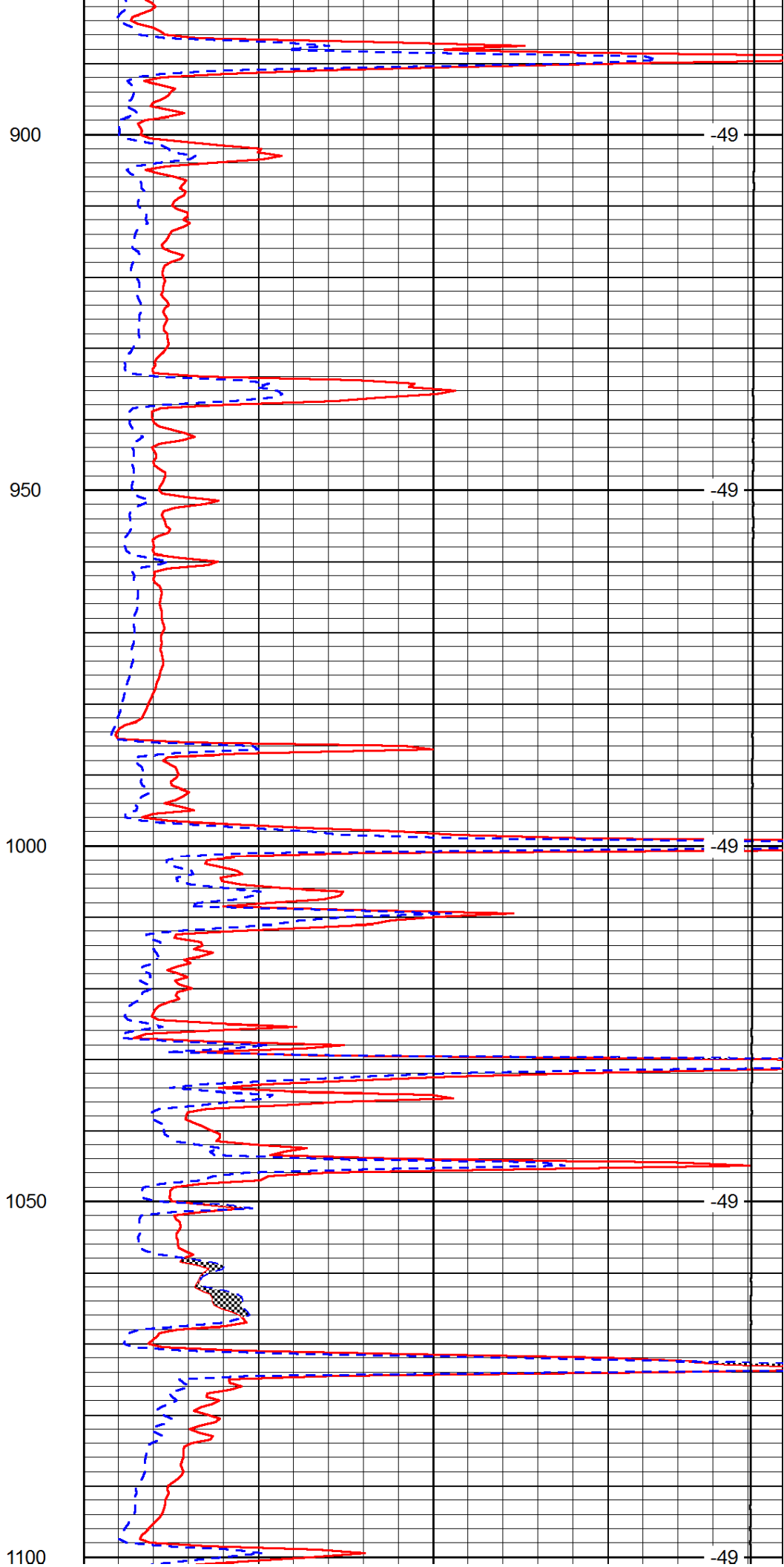
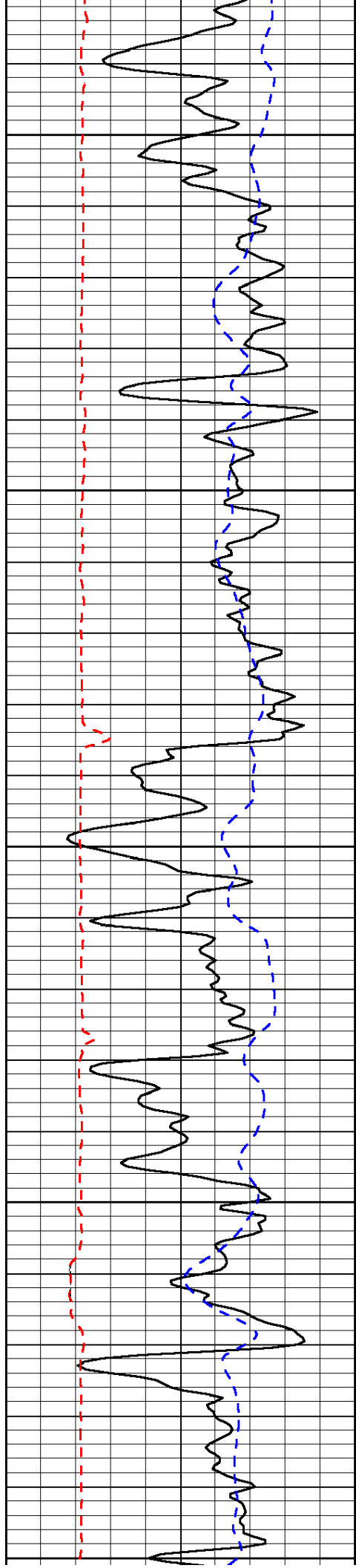
0	Micro Inverse 1 X 1	40
0	Micro Normal 2"	40
15000	Line Weight	0

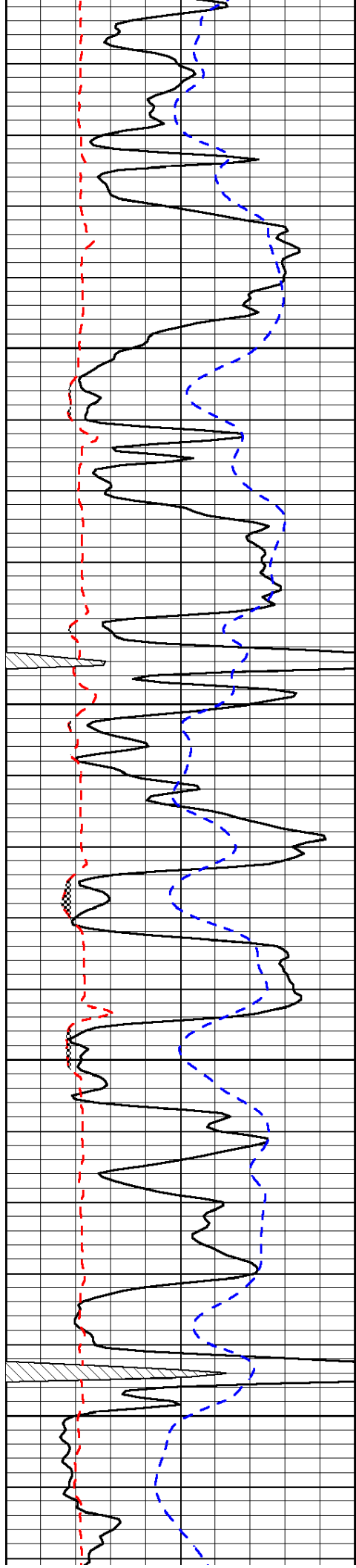
LSPD









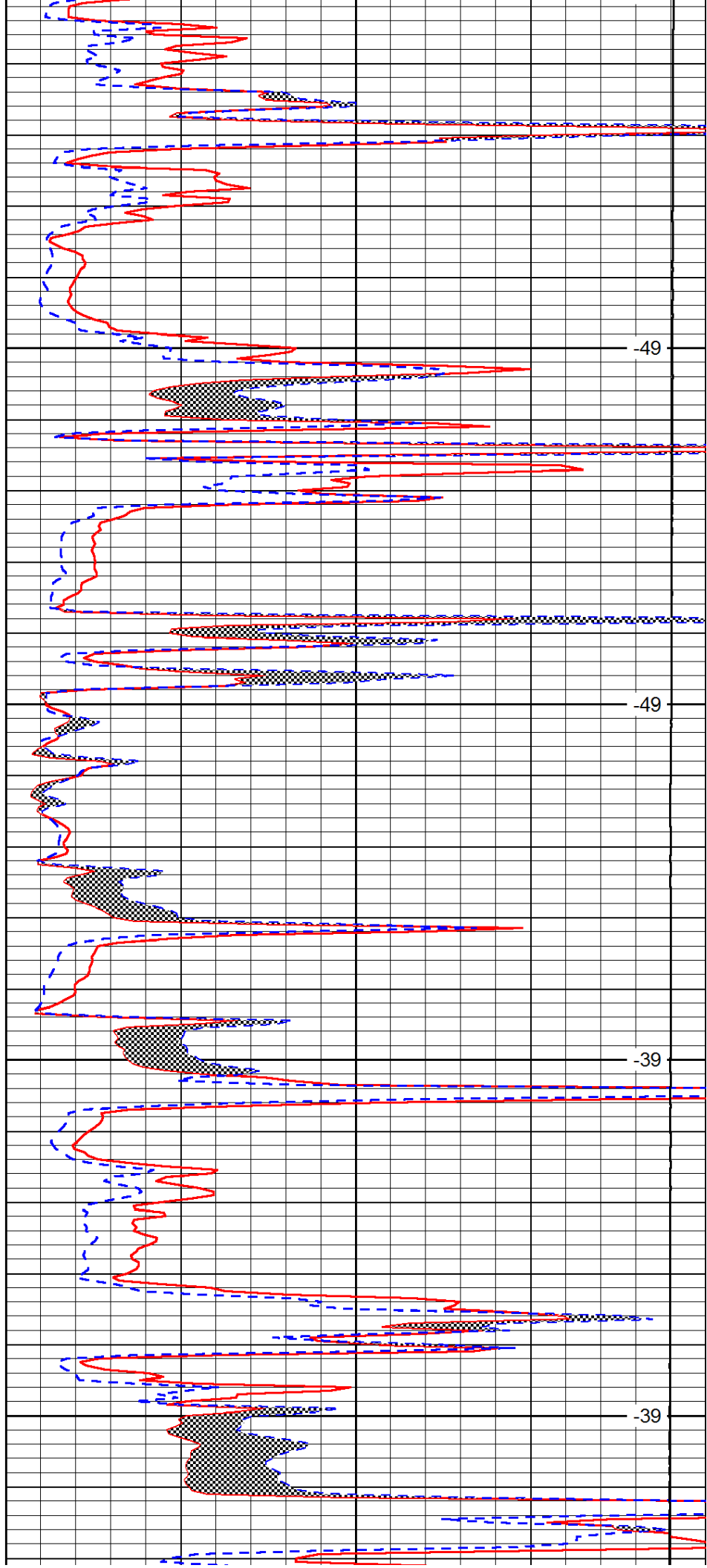


1150

1200

1250

1300

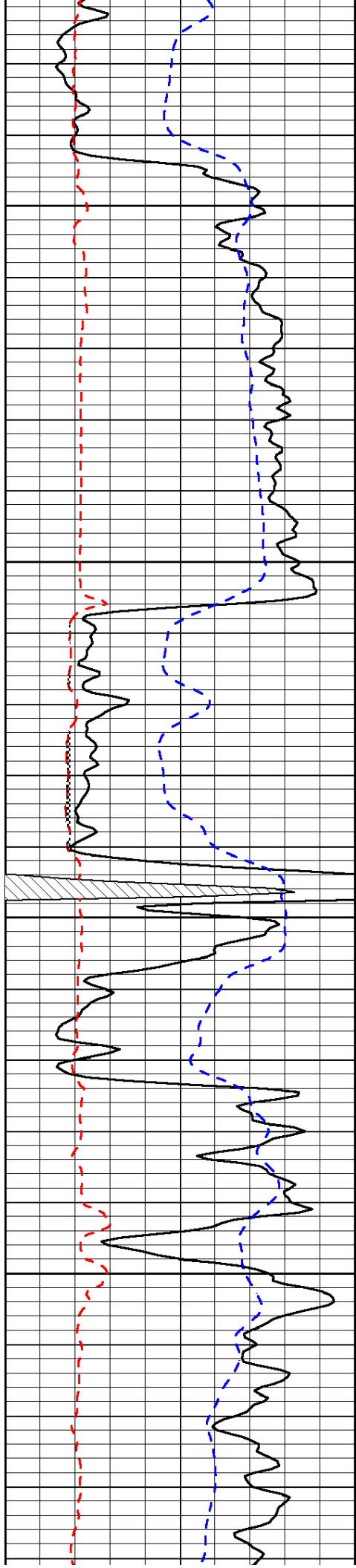


-49

-49

-39

-39

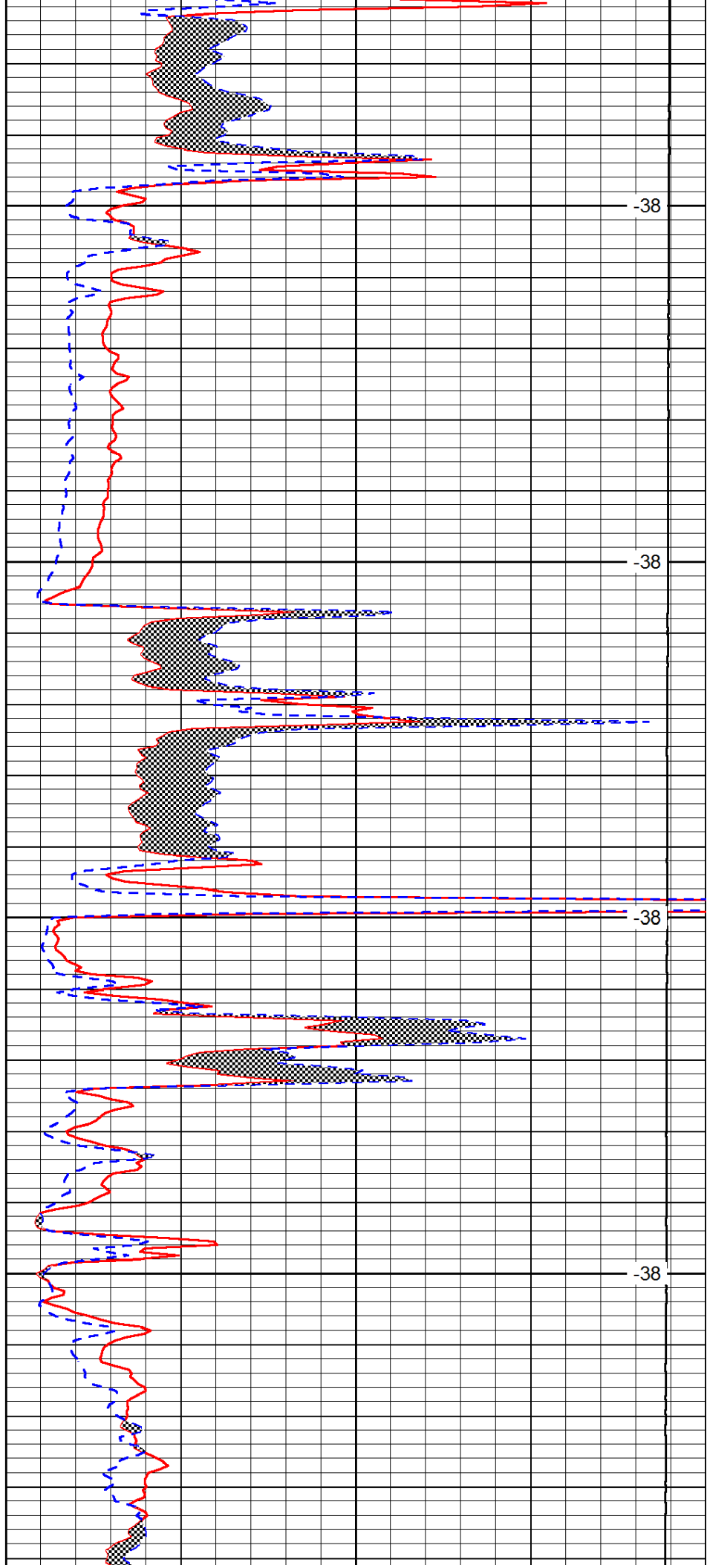


1350

1400

1450

1500

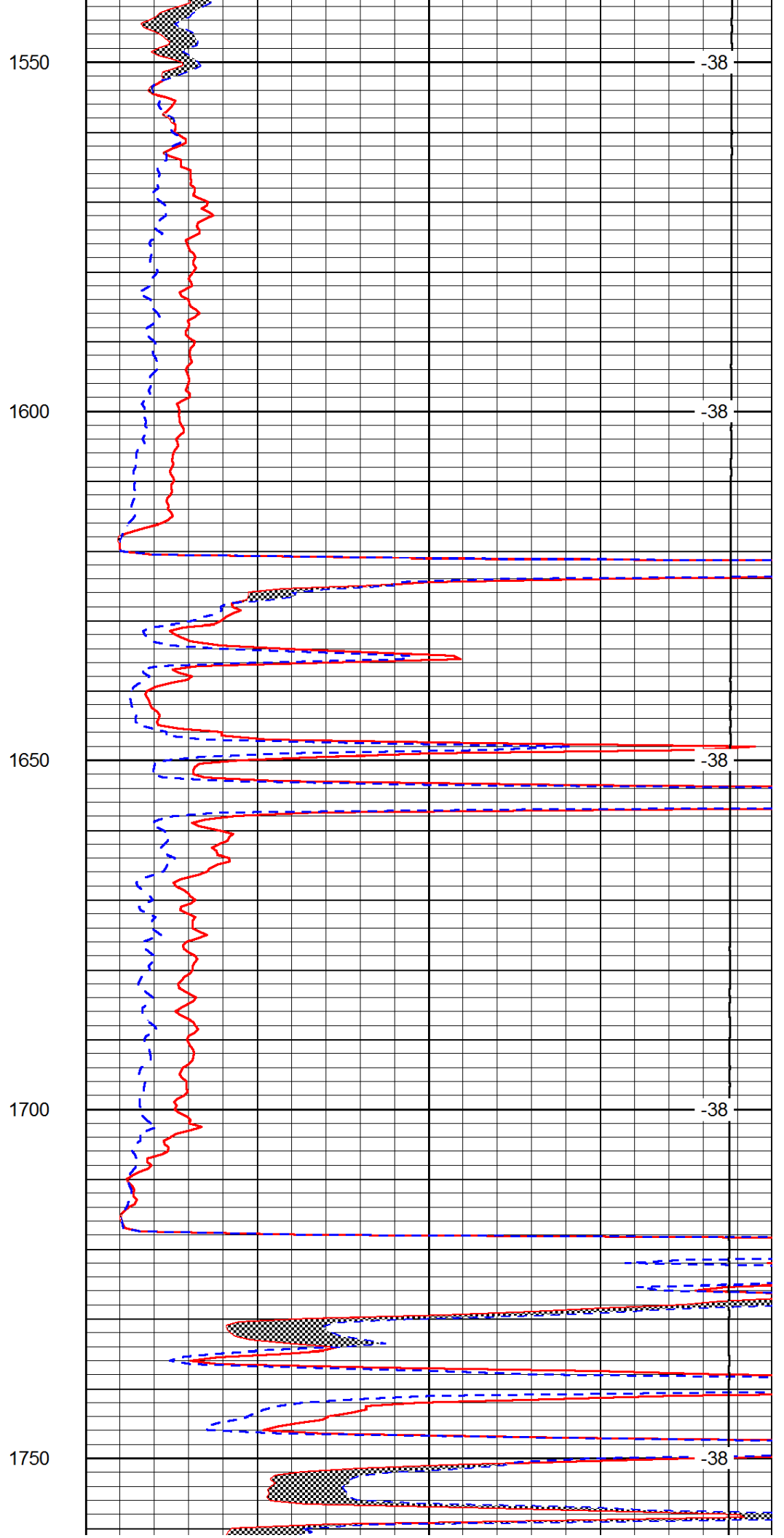
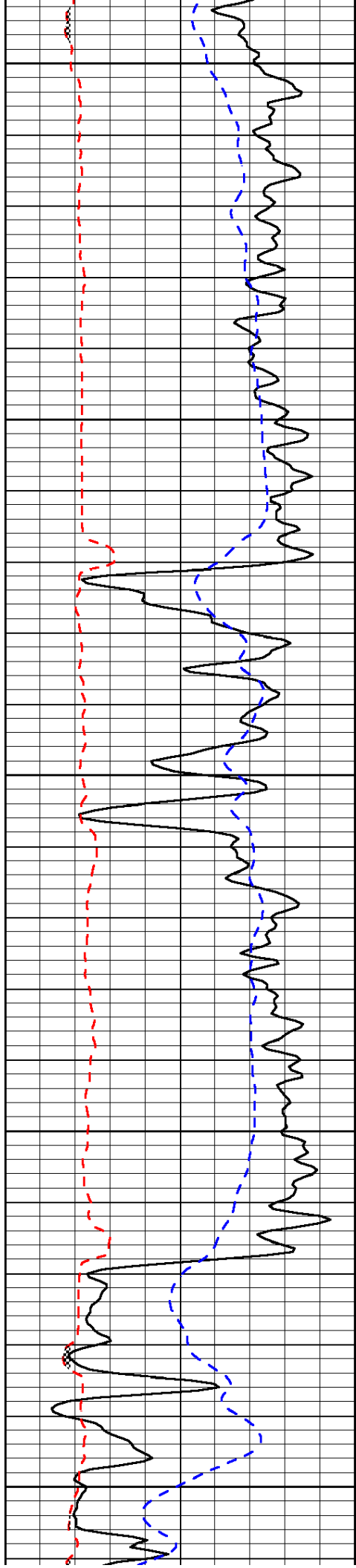


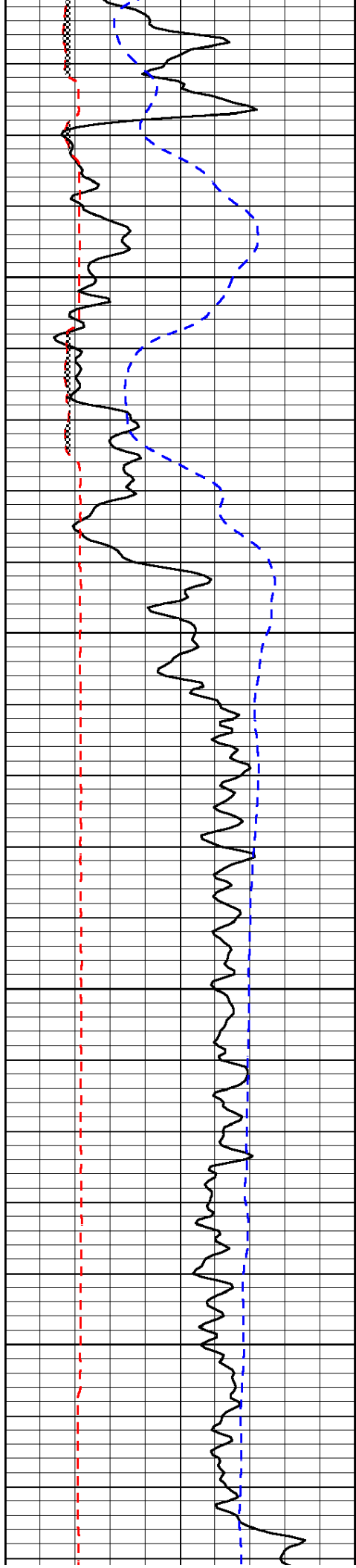
-38

-38

-38

-38



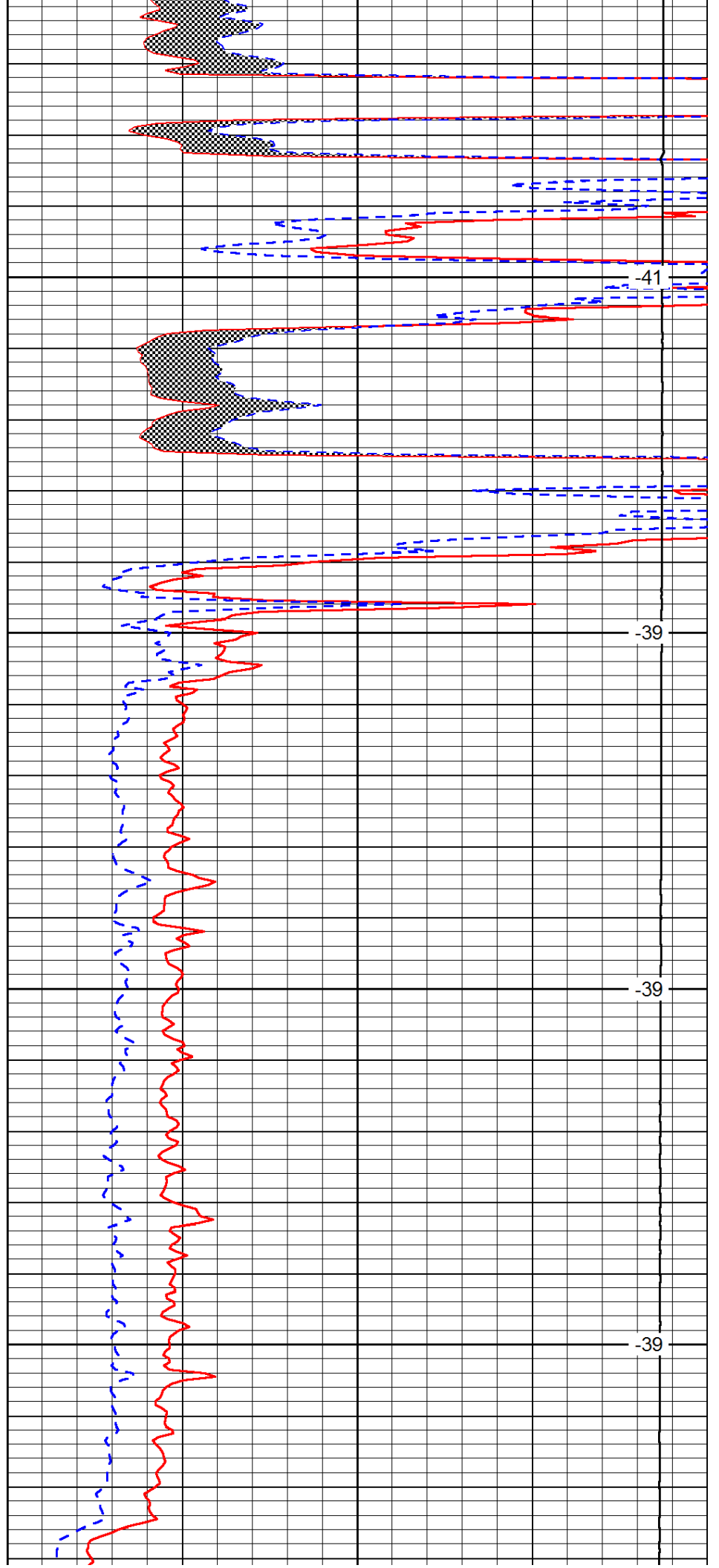


1800

1850

1900

1950

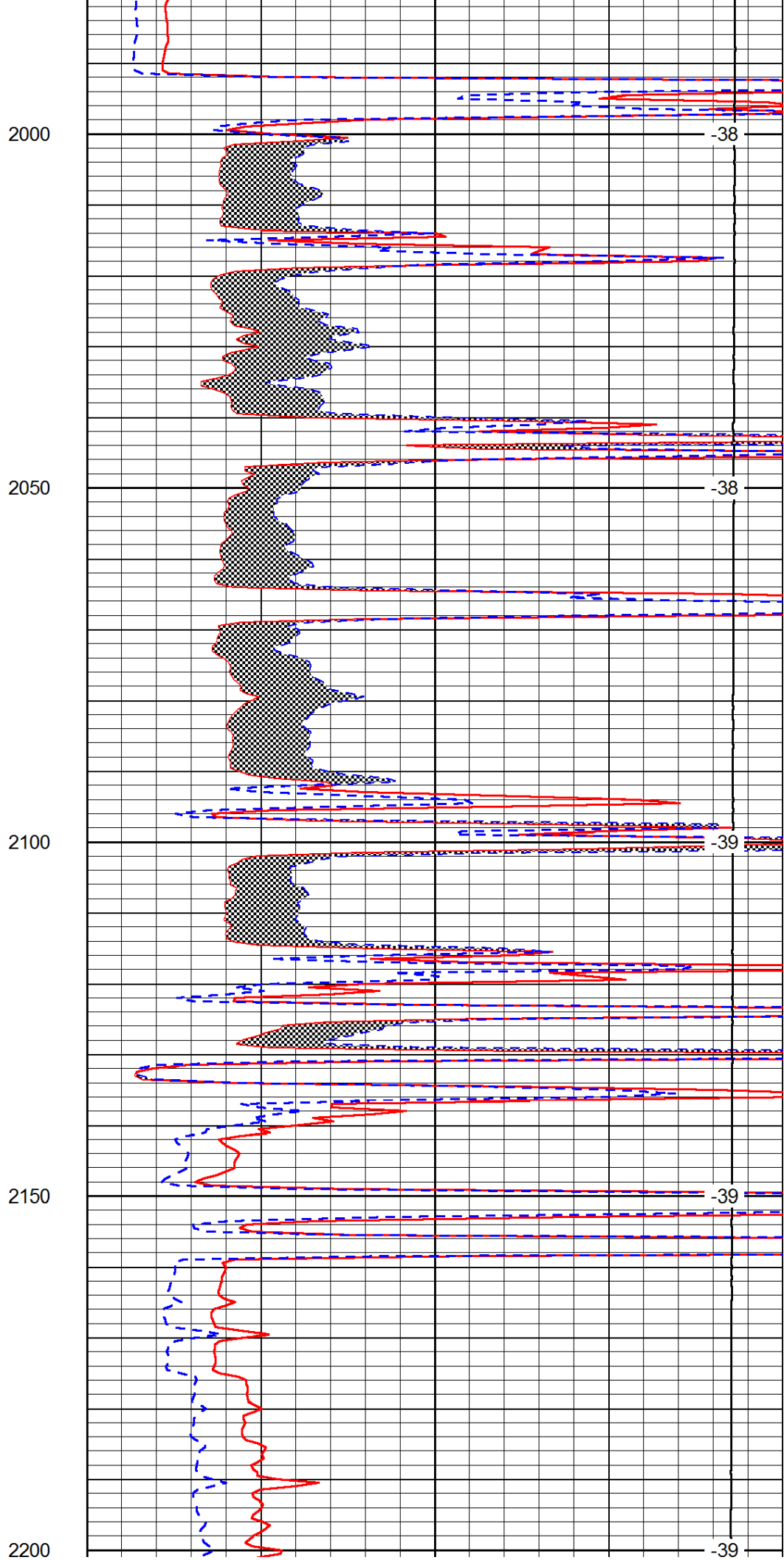
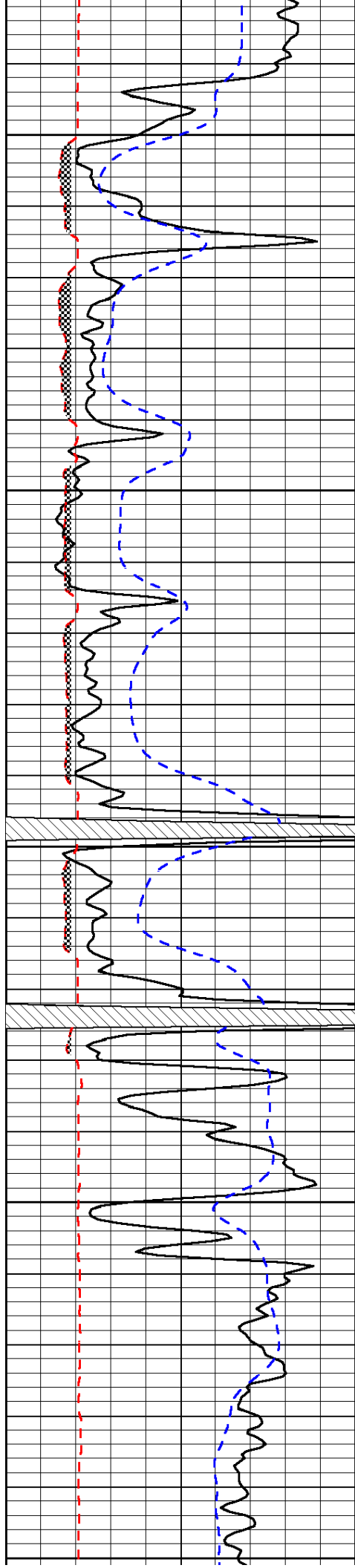


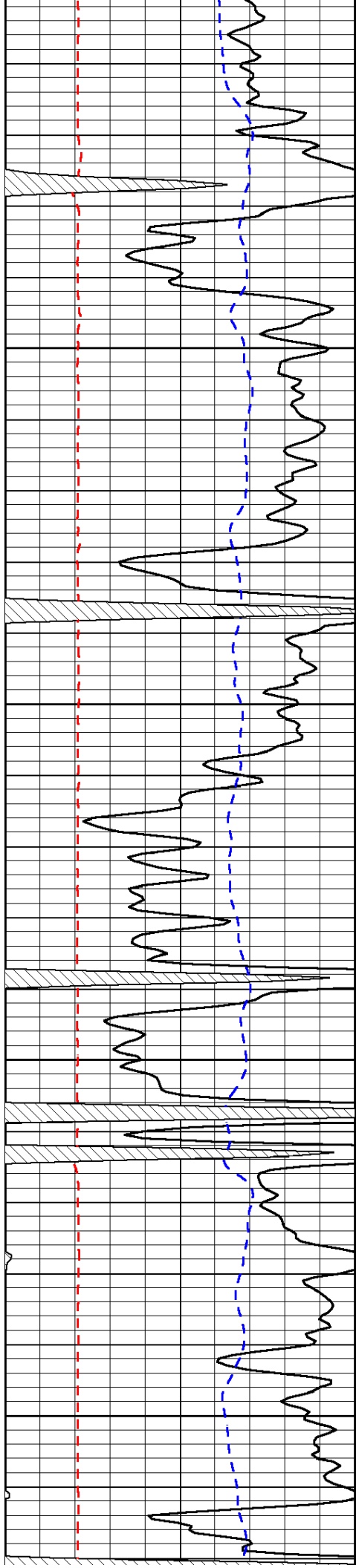
-41

-39

-39

-39



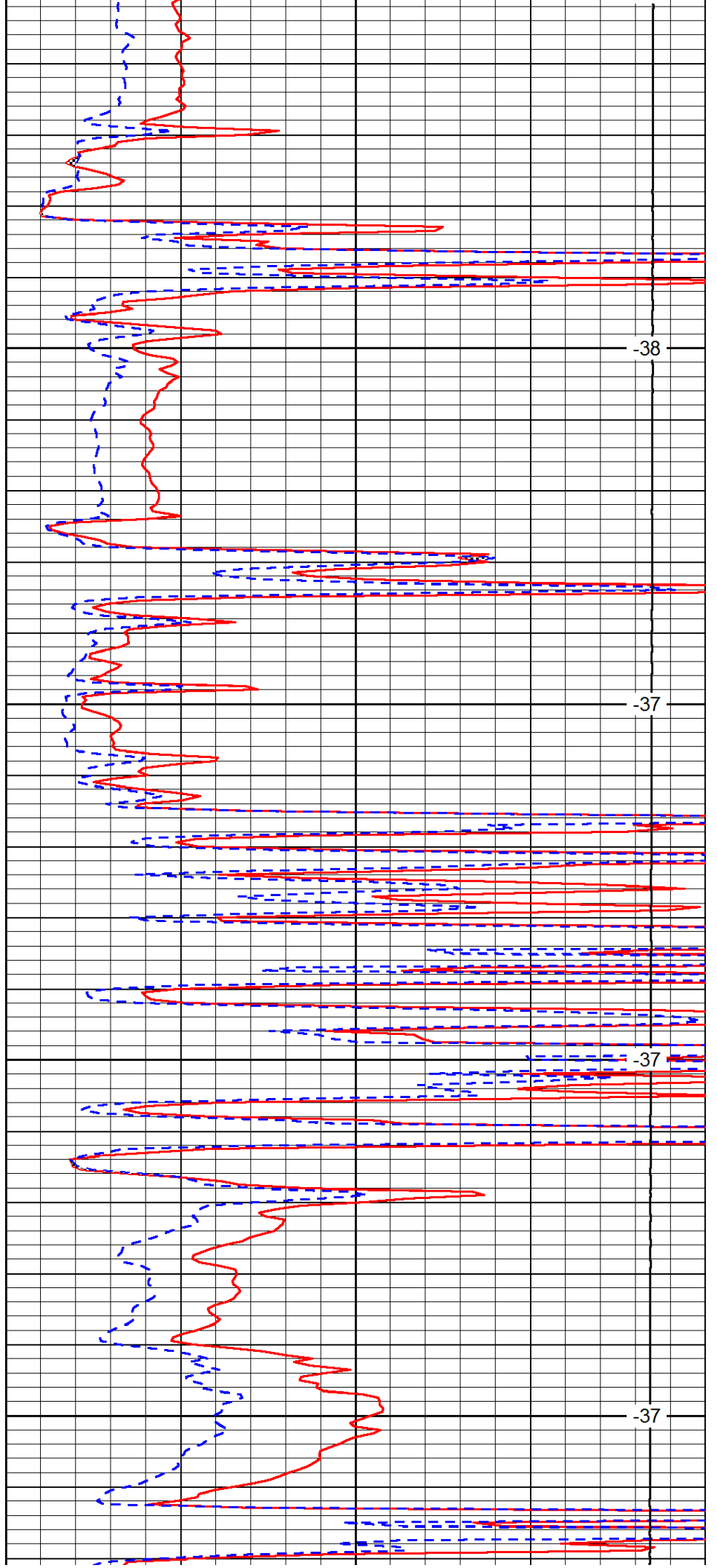


2250

2300

2350

2400

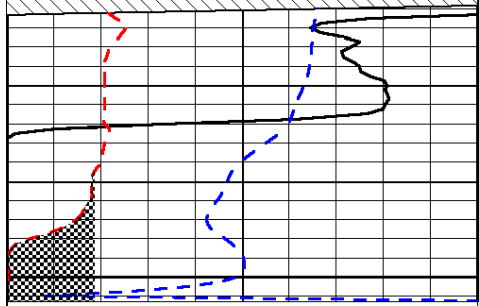


-38

-37

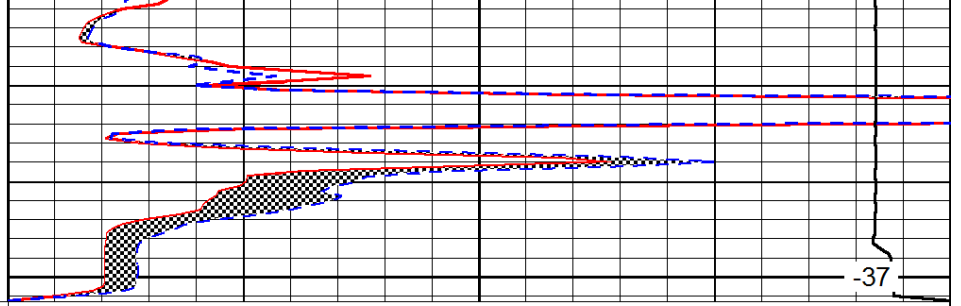
-37

-37



0	Gamma Ray	150
6	Micro Log Caliper (GAPI)	16
-200	SP (mV)	0

2450



0	Micro Inverse 1 X 1	40
0	Micro Normal 2"	40
15000	Line Weight	0

-37

LSPD