



MIDWEST SURVEYS
 LOGGING - PERFORATING - CONSULTING SERVICES
 P.O. Box 68, Osawatomie, KS 68064
 913.755.2128

GAMMA RAY / NEUTRON / CCL

File No. _____

Company **RJ Enterprises**

Well **Weiss No. 10-A**

Field **Bush City Shoestring**

County **Anderson** State **Kansas**

Location **3096' FSL & 4564' FEL**

NW-SE-SW-1/4

Other Services

Perforate

Sec. 15 Twp. 21S Rge. 20E

Permit No. _____

Log Measured From _____

Drilling Measured From _____

Date **11-14-2012**

Run Number _____

Depth Driller **887.0**

Bottom Logged Interval **880.0**

Top Log Interval **20.0**

Fluid Level _____

Type Fluid **Water**

Density / Viscosity _____

Salinity - PPM Cl _____

Max Recorded Temp _____

Estimated Cement Top _____

Equipment No. _____

Recorded By **Garv Wlndisch**

Witnessed By **Jason Kent**

BORE-HOLE RECORD

RUN No. _____

BIT No. _____

One **9.875"**

Two **5.625"**

TO **20.0**

FROM **0.0**

SIZE **7.00"**

WGT. _____

FROM **0.0**

TO **20.0**

881.6

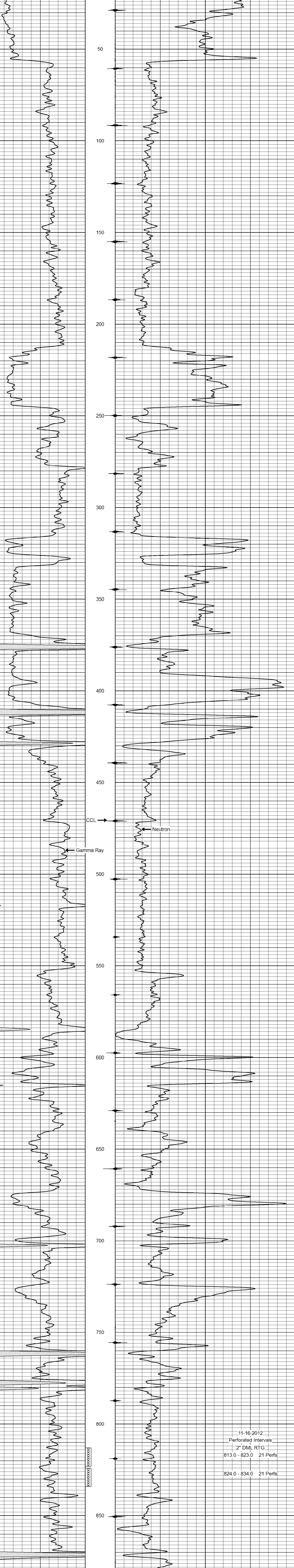
<<< Fold Here >>>

All interpretations are opinions based on inferences from electrical or other measurements and we cannot and do not guarantee the accuracy or correctness of any interpretation, and we shall not, except in the case of gross or willful negligence on our part, be liable or responsible for any loss, costs, damages, or expenses incurred or sustained by anyone resulting from any interpretation made by any of our officers, agents or employees. These interpretations are also subject to our general terms and conditions set out in our current Price Schedule.

Comments

Drilling Contractor :
RJ Enterprises

Database File: weis10a.db
 Dataset Pathname: pass1
 Presentation Format: gr-n-ccl
 Dataset Creation: Wed Nov 14 15:52:45 2012 by Log SCH 111116
 Charted by: Depth in Feet scaled 1:240



11-16-2012
 Perforated Intervals
 2" DML RTG
 813.0 - 823.0 21 Perfs
 824.0 - 834.0 21 Perfs