



MIDWEST SURVEYS
 LOGGING - PERFORATING - CONSULTING SERVICES
 P.O. Box 66, Osawatomie, KS 66064
 913 / 755 - 2128

GAMMA RAY / NEUTRON / CCL

File No. _____

Company **RJ Enterprises**

Well **Hunley No. 17-A**

Field **Bush City Shoestring**

County **Anderson** State **Kansas**

Location **4869 FSL & 3023 FEL
 SW-NE-NE-NW**

Other Services
Perforate

Sec. **16** Twp. **21s** Rge. **20e**

Perforant Datum **GL** Elevation **NA**

Log Measured From **GL** Elevation **NA**

Drilling Measured From **GL** Elevation **KB NA
 D.F. NA
 G.L. NA**

Date **11-27-2012**

Run Number **One**

Depth Driller **859.0**

Depth Logger **851.5**

Bottom Logged Interval **850.5**

Top Log Interval **20.0**

Fluid Level **Full**

Type Fluid **Water**

Density / Viscosity **NA**

Salinity - PPM Cl **NA**

Max Recorded Temp **NA**

Estimated Cement Top **NA**

Equipment No. **104** Location **Osawatomie**

Recorded By **Gary Windsch**

Witnessed By **Jason Kent**

BOREHOLE RECORD

RUN NO. **ONE** BIT FROM **20.0** TO **20.0** SIZE **7.00"** WGT. **0.0** FROM **20.0** TO **20.0**

TYPE **ONE** BIT FROM **20.0** TO **20.0** SIZE **7.00"** WGT. **0.0** FROM **20.0** TO **20.0**

TYPE **ONE** BIT FROM **20.0** TO **20.0** SIZE **7.00"** WGT. **0.0** FROM **20.0** TO **20.0**

TYPE **ONE** BIT FROM **20.0** TO **20.0** SIZE **7.00"** WGT. **0.0** FROM **20.0** TO **20.0**

TYPE **ONE** BIT FROM **20.0** TO **20.0** SIZE **7.00"** WGT. **0.0** FROM **20.0** TO **20.0**

TYPE **ONE** BIT FROM **20.0** TO **20.0** SIZE **7.00"** WGT. **0.0** FROM **20.0** TO **20.0**

TYPE **ONE** BIT FROM **20.0** TO **20.0** SIZE **7.00"** WGT. **0.0** FROM **20.0** TO **20.0**

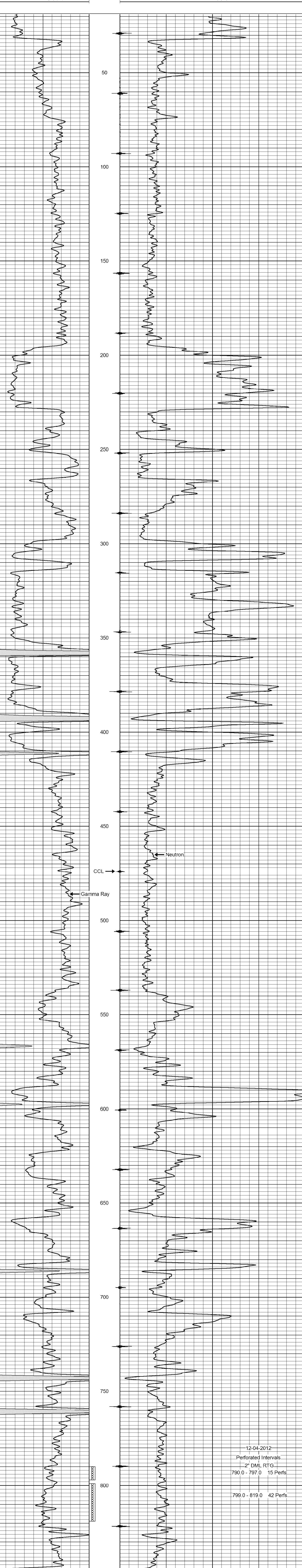
<<< Fold Here >>>

All interpretations are opinions based on inferences from electrical or other measurements and we cannot and do not guarantee the accuracy or correctness of any interpretation, and we shall not, except in the case of gross or willful negligence on our part, be liable or responsible for any loss, costs, damages, or expenses incurred or sustained by anyone resulting from any interpretation made by any of our officers, agents or employees. These interpretations are also subject to our general terms and conditions set out in our current Price Schedule.

Comments

Drilling Contractor :
 RJ Enterprises

Database File: hurley17a.db
 Dataset Pathname: pass1
 Presentation Format: gr-n-ccl
 Dataset Creation: Tue Nov 27 14:18:38 2012 by Log SCH 111116
 Charted by: Depth in Feet scaled 1:240



Gamma Ray (cps) 0 150 Neutron (cps) 100 1800