



DIGITAL LOG (785) 625-3858

Microresistivity Log

15-193-20,840-00-00

API No.

Company Murfin Drilling Company, Inc.

Well Kruto No. 1-29

Field Wildcat

County Thomas

State

Kansas

Location 1896' FSL & 1816' FWL

Other Services
CNL/CDL
DIL/BHCS

Sec: 29 Twp: 10S Rge: 34W

Permanent Datum Ground Level Elevation 3245
Log Measured From Kelly Bushing 13 Ft. Above Perm. Datum
Drilling Measured From Kelly Bushing

Elevation
K.B. 3258
D.F.
G.L. 3245

Date	2/23/2012	
Run Number	Two	
Depth Driller	4915	
Depth Logger	4904	
Bottom Logged Interval	4903	
Top Log Interval	3800	
Casing Driller	8.625 @ 268	
Casing Logger	268	
Bit Size	7.875	
Type Fluid in Hole	Chemical	
Salinity, ppm CL	9.900	
Density / Viscosity	9.3 52	
pH / Fluid Loss	10.0 7.6	
Source of Sample	Flowline	
Rm @ Meas. Temp	.085 @ 57	
Rmf @ Meas. Temp	.06 @ 57	
Rmc @ Meas. Temp	.11 @ 57	
Source of Rmf / Rmc	Charts	
Rm @ BHT	.04 @ 125	
Operating Rig Time	4 1/2 Hours	
Max Rec. Temp. F	125	
Equipment Number	17	
Location	Hays	
Recorded By	C. Desai	
Witnessed By	Tom Funk	

<<< Fold Here >>>

All interpretations are opinions based on inferences from electrical or other measurements and we cannot and do not guarantee the accuracy or correctness of any interpretation, and we shall not, except in the case of gross or willful negligence on our part, be liable or responsible for any loss, costs, damages, or expenses incurred or sustained by anyone resulting from any interpretation made by any of our officers, agents or employees. These interpretations are also subject to our general terms and conditions set out in our current Price Schedule.

Comments

Thank you for using Log-Tech, Inc.
(785) 625-3858

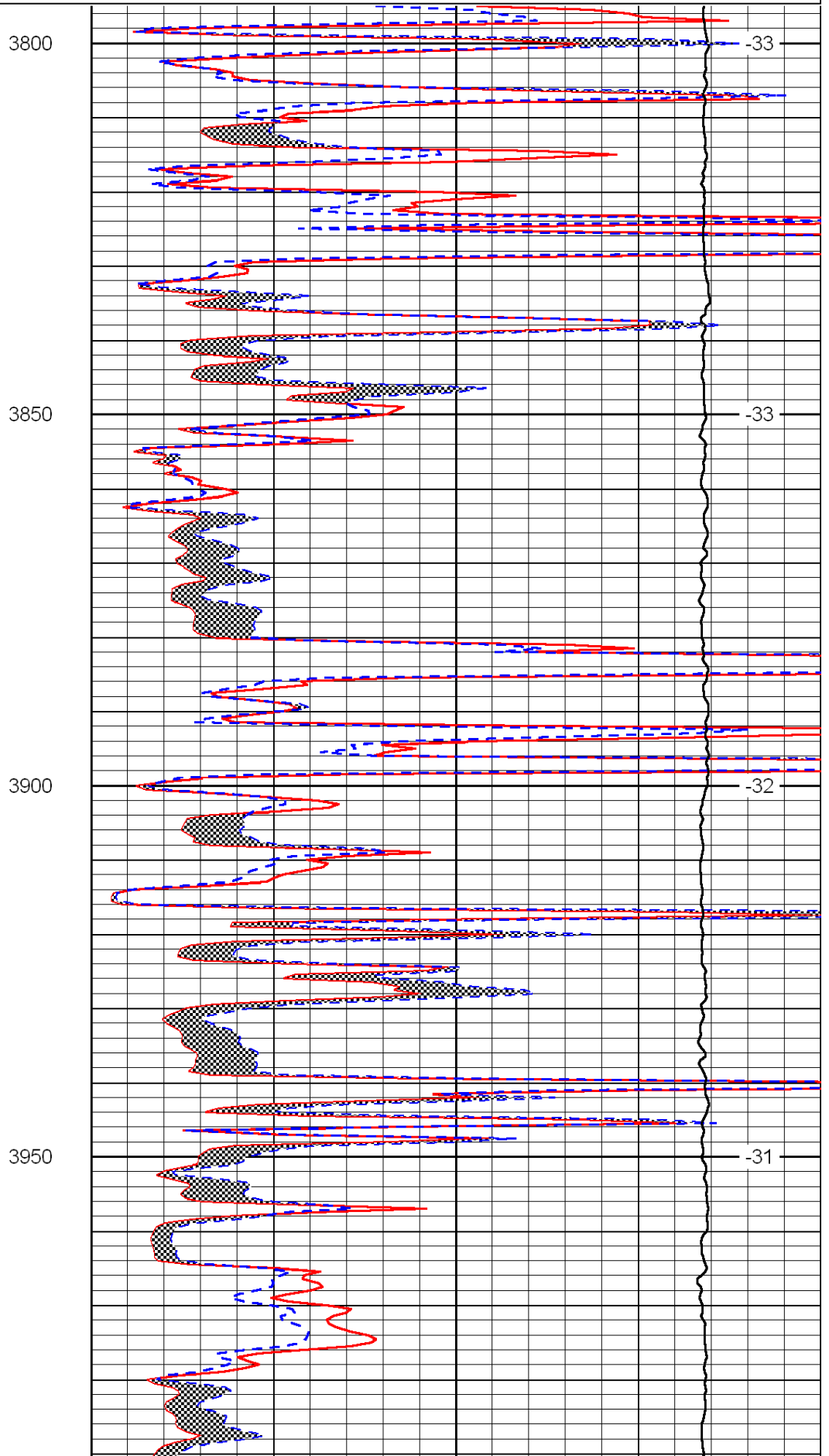
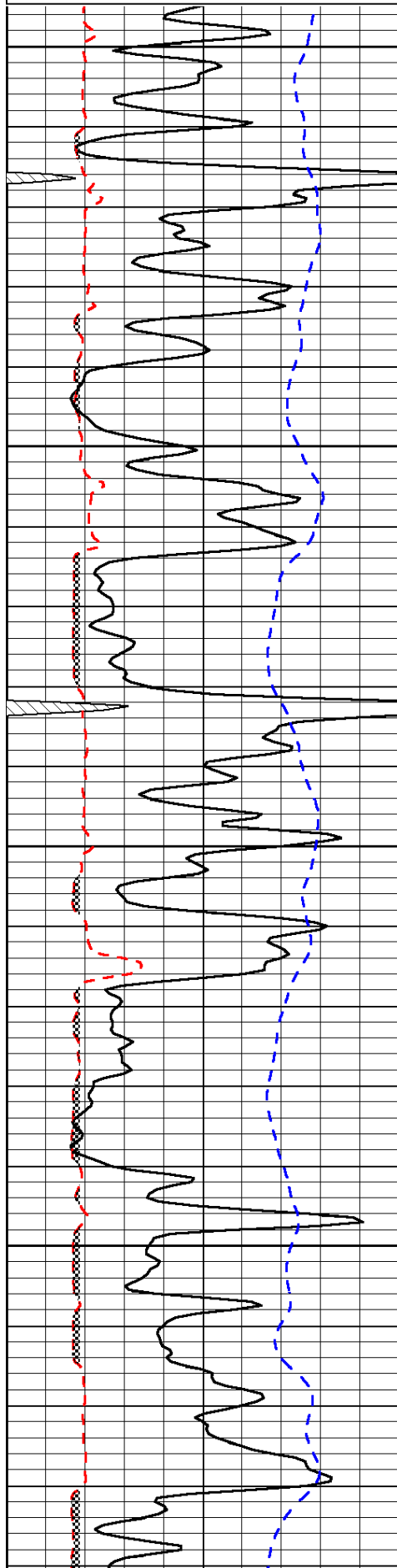
Monument KS, W to Hwy 25,
2 N, 5 W, 1 N, E Into

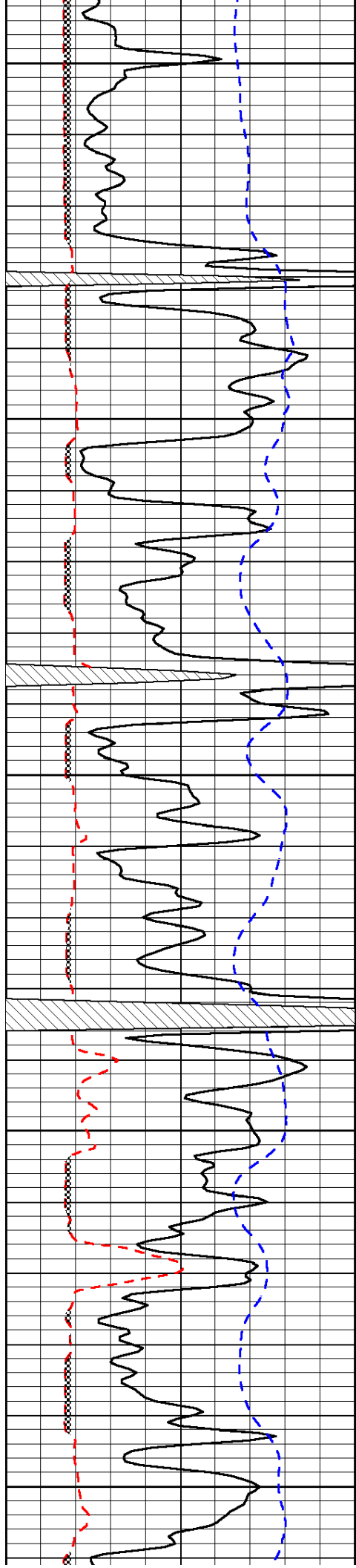
Database File: c:\warrior\data\murfin_kruto no.1-29\murfinhd.db
 Dataset Pathname: dil/murfstk
 Presentation Format: micro
 Dataset Creation: Thu Feb 23 07:34:13 2012
 Charted by: Depth in Feet scaled 1:240

0	Gamma Ray	150
6	Micro Log Caliper (GAPI)	16
-200	SP (mV)	0

0	Micro Inverse 1 X 1	40
0	Micro Normal 2"	40
15000	Line Weight	0

LSPD





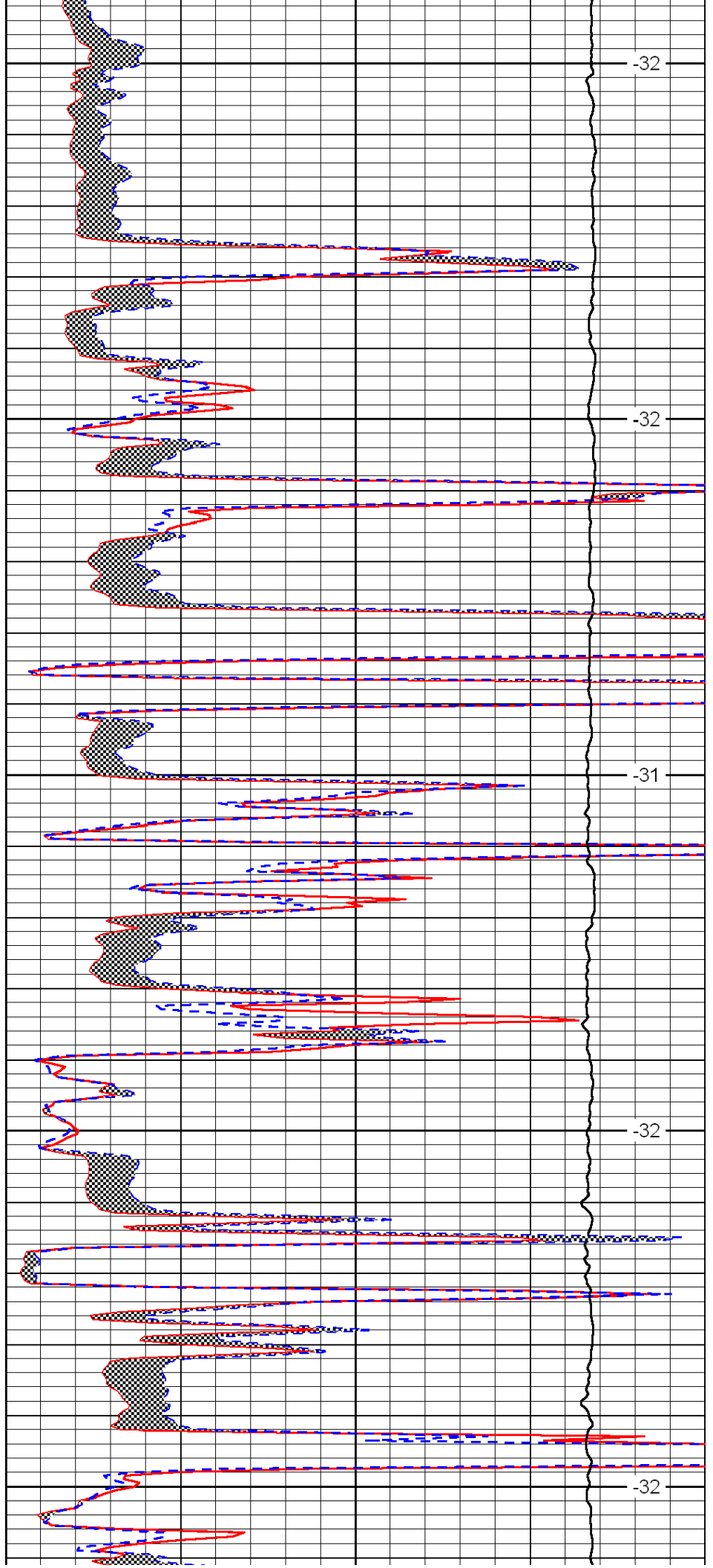
4000

4050

4100

4150

4200



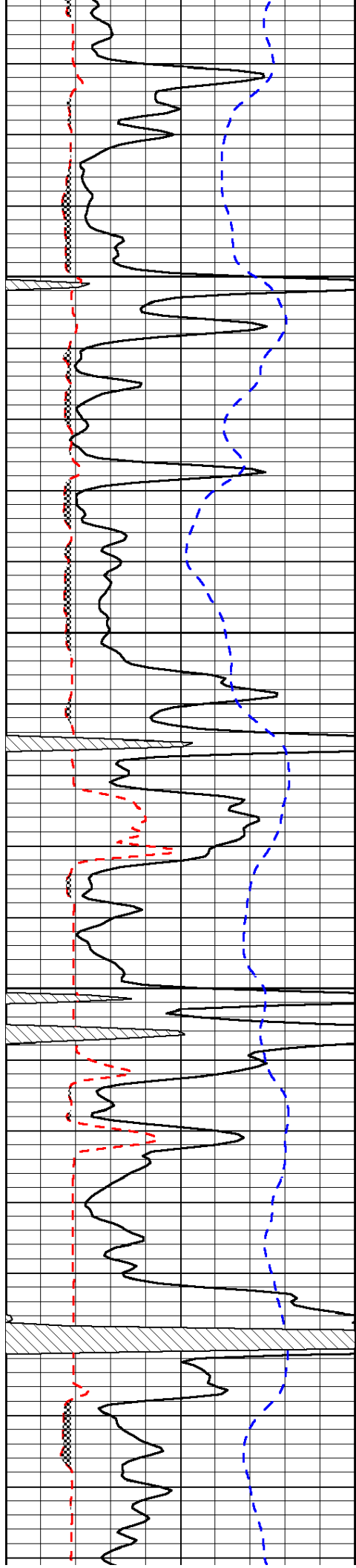
-32

-32

-31

-32

-32

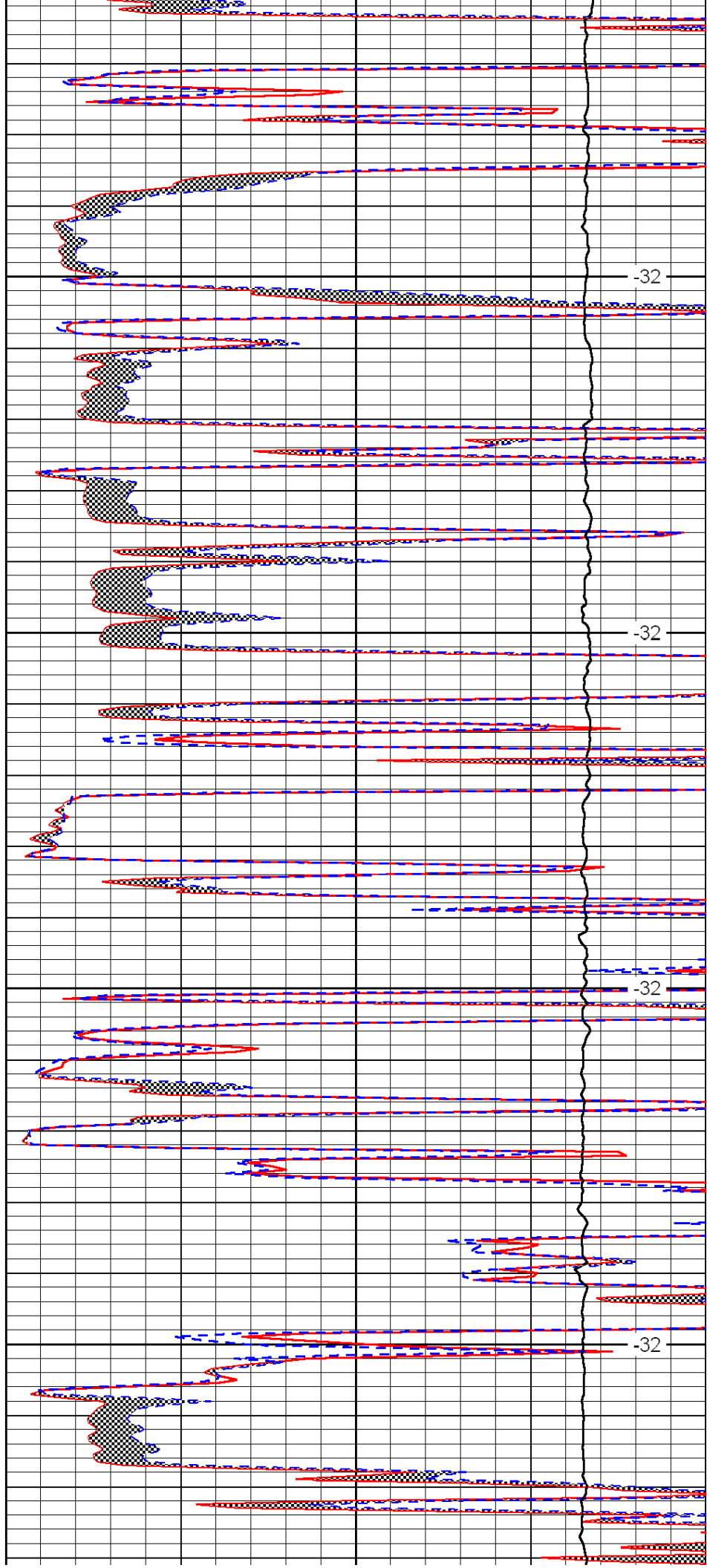


4250

4300

4350

4400

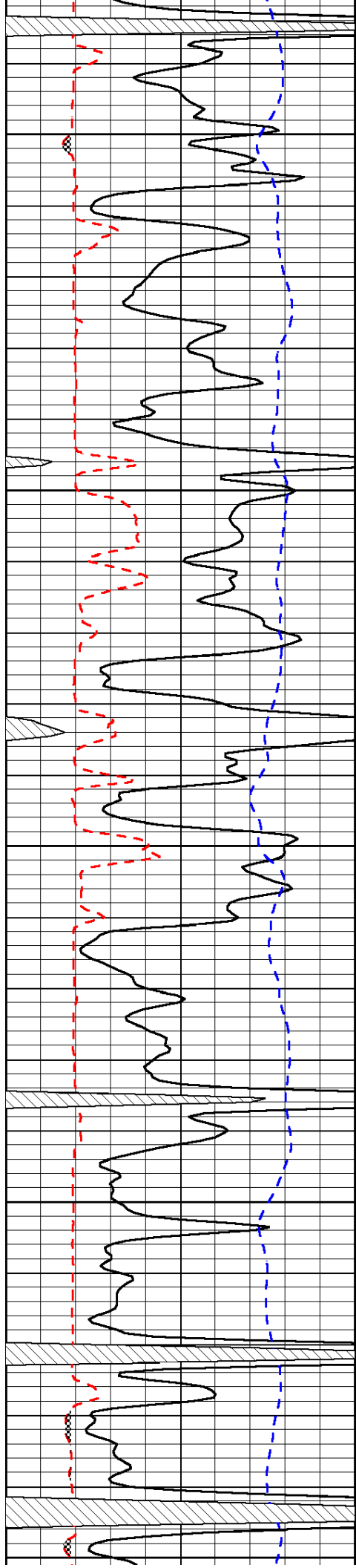


-32

-32

-32

-32



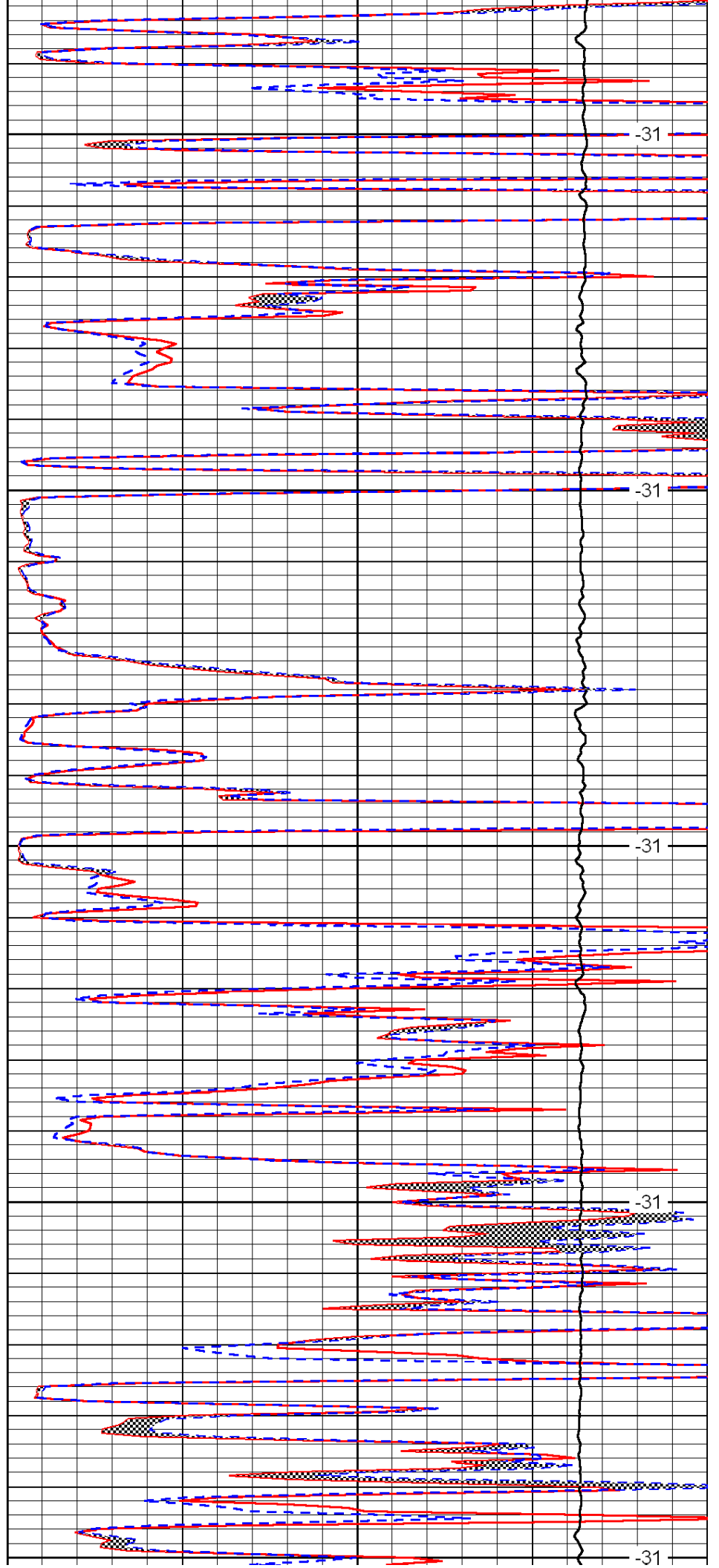
4450

4500

4550

4600

4650



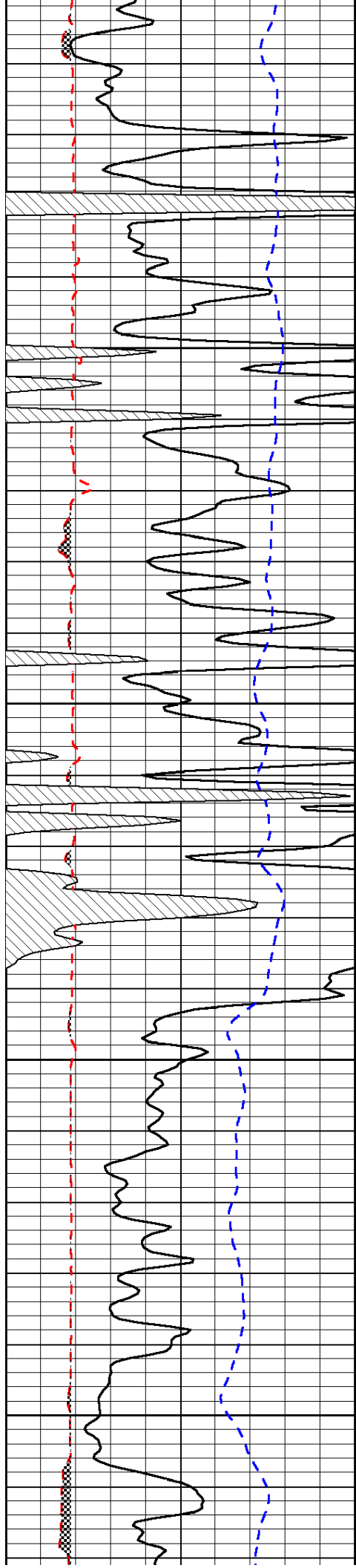
-31

-31

-31

-31

-31

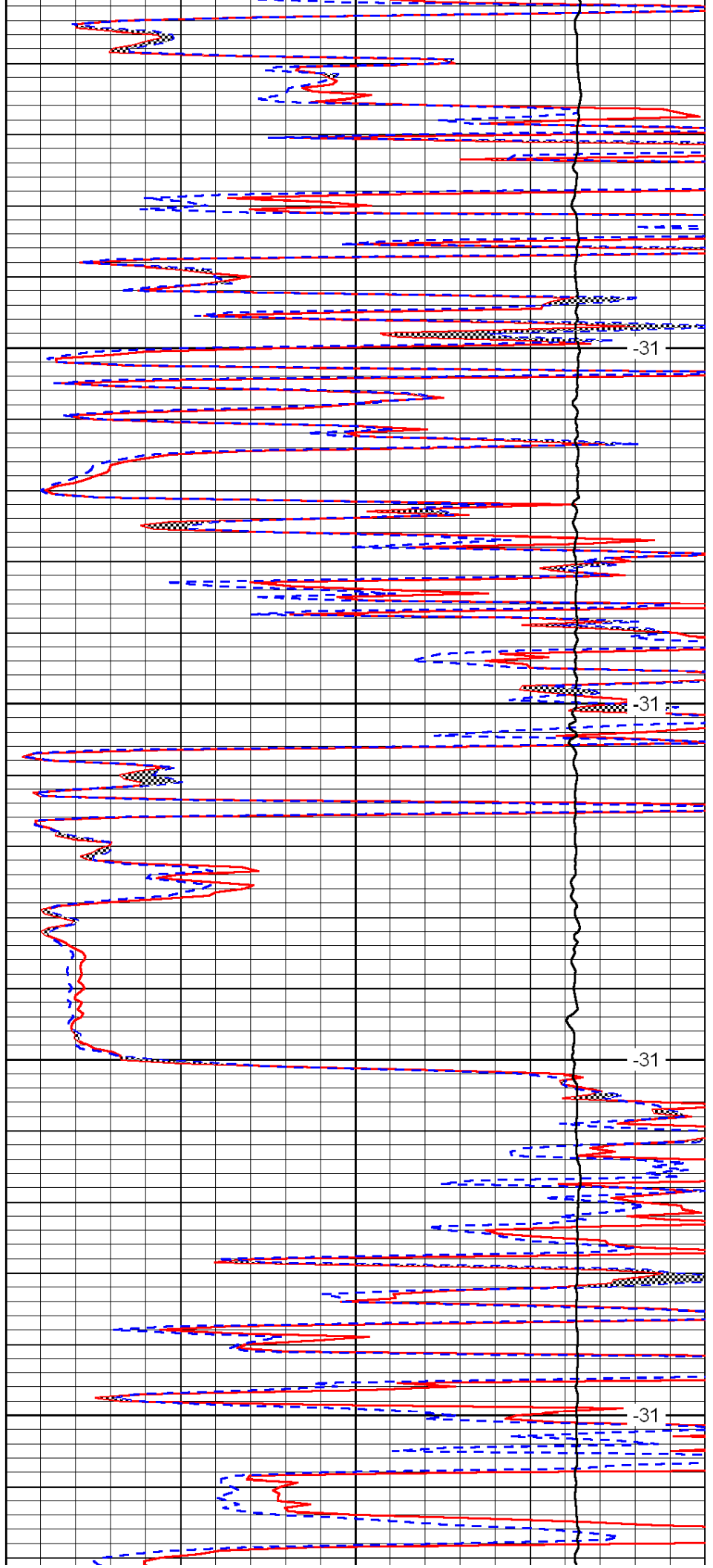


4700

4750

4800

4850

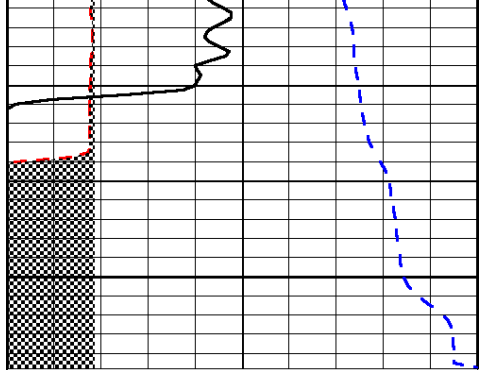


-31

-31

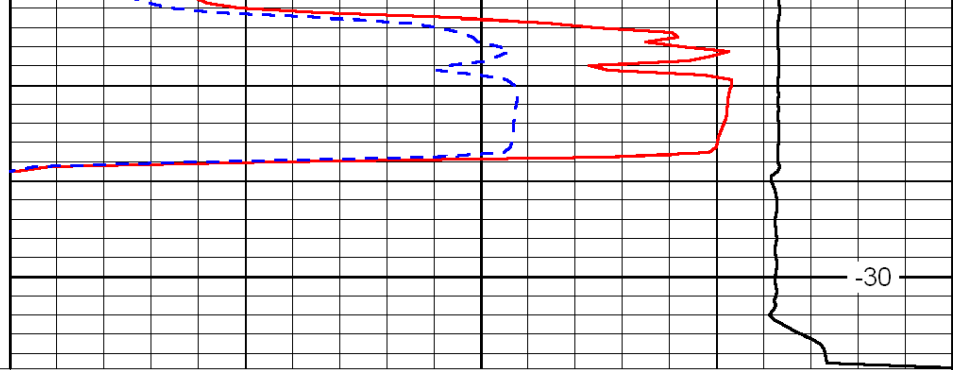
-31

-31



0	Gamma Ray	150
6	Micro Log Caliper (GAPI)	16
-200	SP (mV)	0

4900



0	Micro Inverse 1 X 1	40
0	Micro Normal 2"	40
15000	Line Weight	0

-30

LSPD