



Dual Compensated Porosity Log

DIGITAL LOG (785) 625-3858

15-193-20,841-00-00

API No.

Company **Murfin Drilling Company, Inc.**

Well **Schertz No. 1-28**

Field

County **Thomas**

State **Kansas**

Location
**NW SE SW NW
 2,077' FNL & 963' FWL**

Sec: **28** Twp: **10S** Rge: **34W**

Other Services
 DIL
 MEL/BHCS

Elevation
 K.B. 3209
 D.F.
 G.L. 3196

Permanent Datum Ground Level Elevation 3196
 Log Measured From Kelly Bushing 13 Ft. Above Perm. Datum
 Drilling Measured From Kelly Bushing

Date **3/7/2012**

Run Number **One**

Type Log **CNL / CDL**

Depth Driller **4840**

Depth Logger **4832**

Bottom Logged Interval **4811**

Top Logged Interval **3800**

Type Fluid In Hole **Chemical**

Salinity, PPM CL **9300**

Density **9.1**

Level **Full**

Max. Rec. Temp. F **124**

Operating Rig Time **5 Hours**

Equipment -- Location **10 Hays**

Recorded By **J. Long**

Witnessed By **Tom Funk**

Borehole Record				Casing Record			
Run No.	Bit	From	To	Size	Wgt.	From	To
1	12.25	00	235	8.625	24#	00	235
2	7.875	235	4840				

<<< Fold Here >>>

All interpretations are opinions based on inferences from electrical or other measurements and we cannot and do not guarantee the accuracy or correctness of any interpretation, and we shall not, except in the case of gross or willful negligence on our part, be liable or responsible for any loss, costs, damages, or expenses incurred or sustained by anyone resulting from any interpretation made by any of our officers, agents or employees. These interpretations are also subject to our general terms and conditions set out in our current Price Schedule.

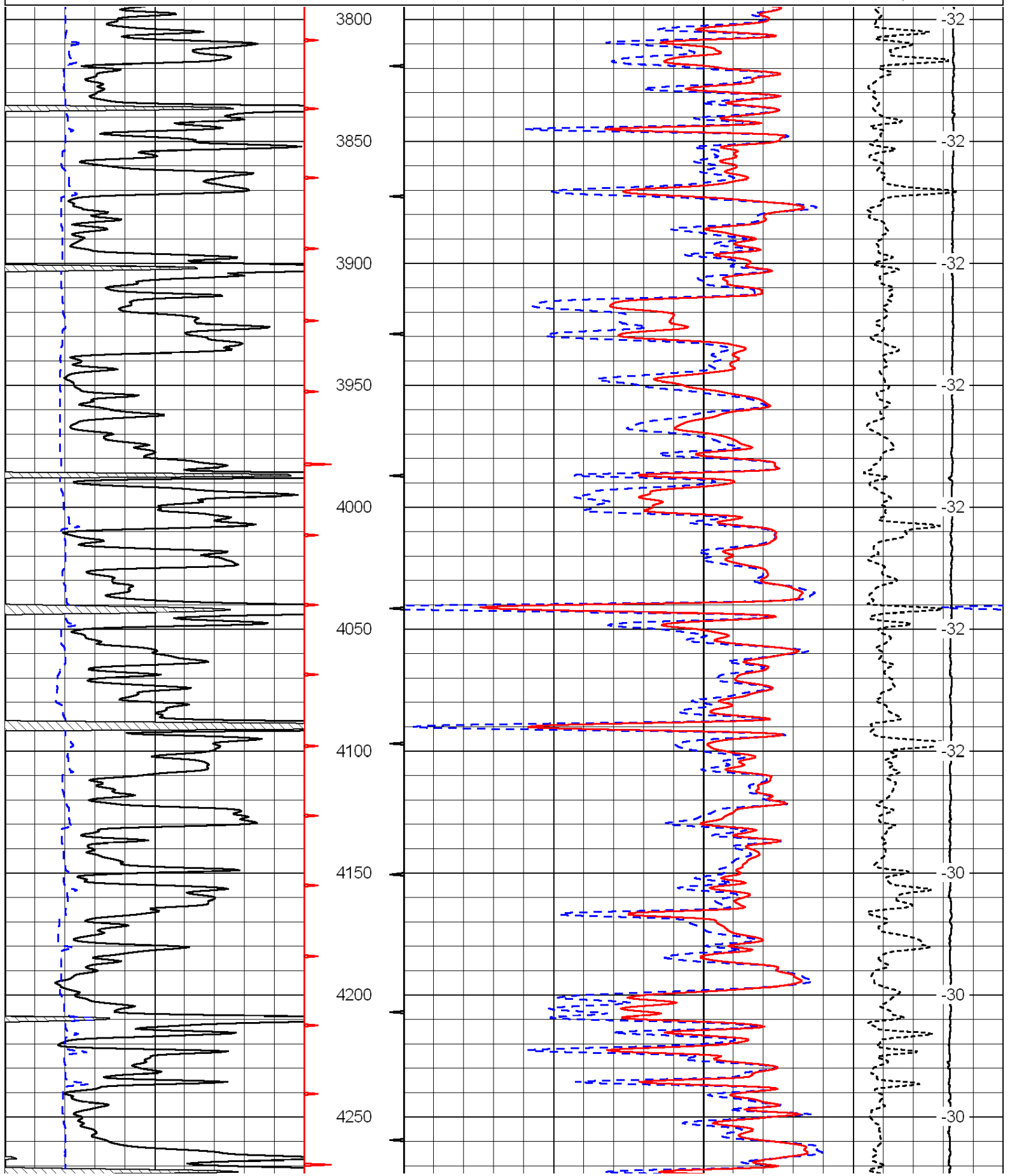
Comments

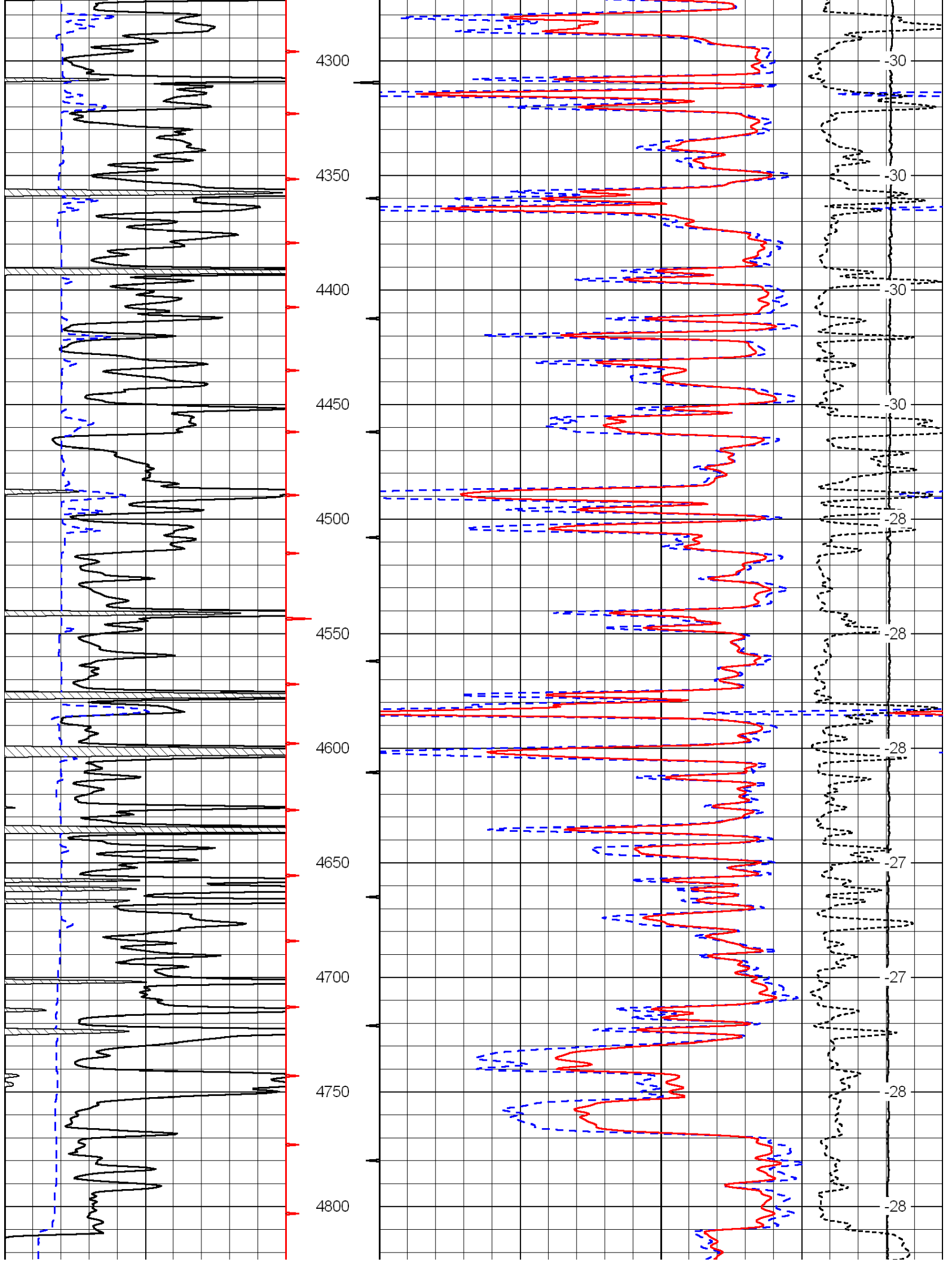
Thank you for using Log-Tech, Inc.
 (785) 625-3858

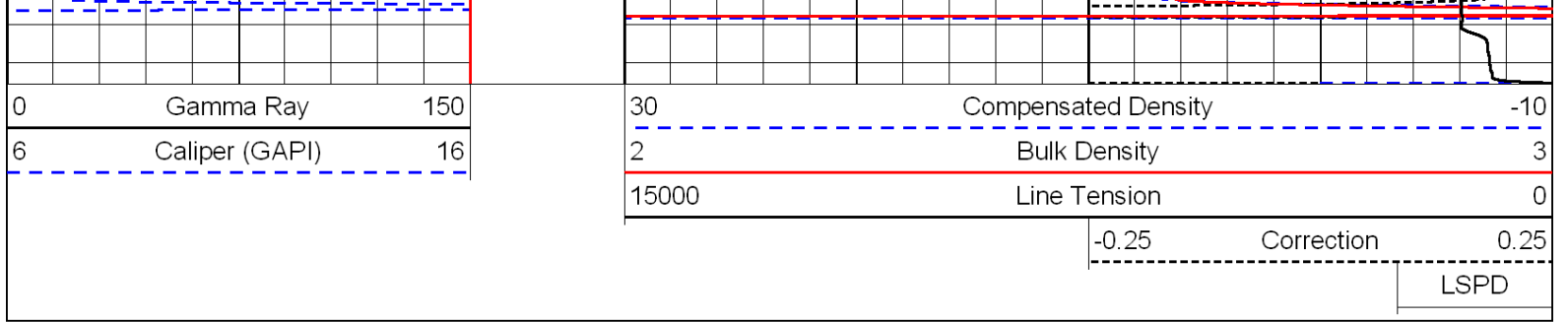
Monument, 2 West to Highway 25, 2 North to Curve, 4 West on A Road, 1 1/2 North on 15 Road, East Into

0	Gamma Ray	150
6	Caliper (GAPI)	16

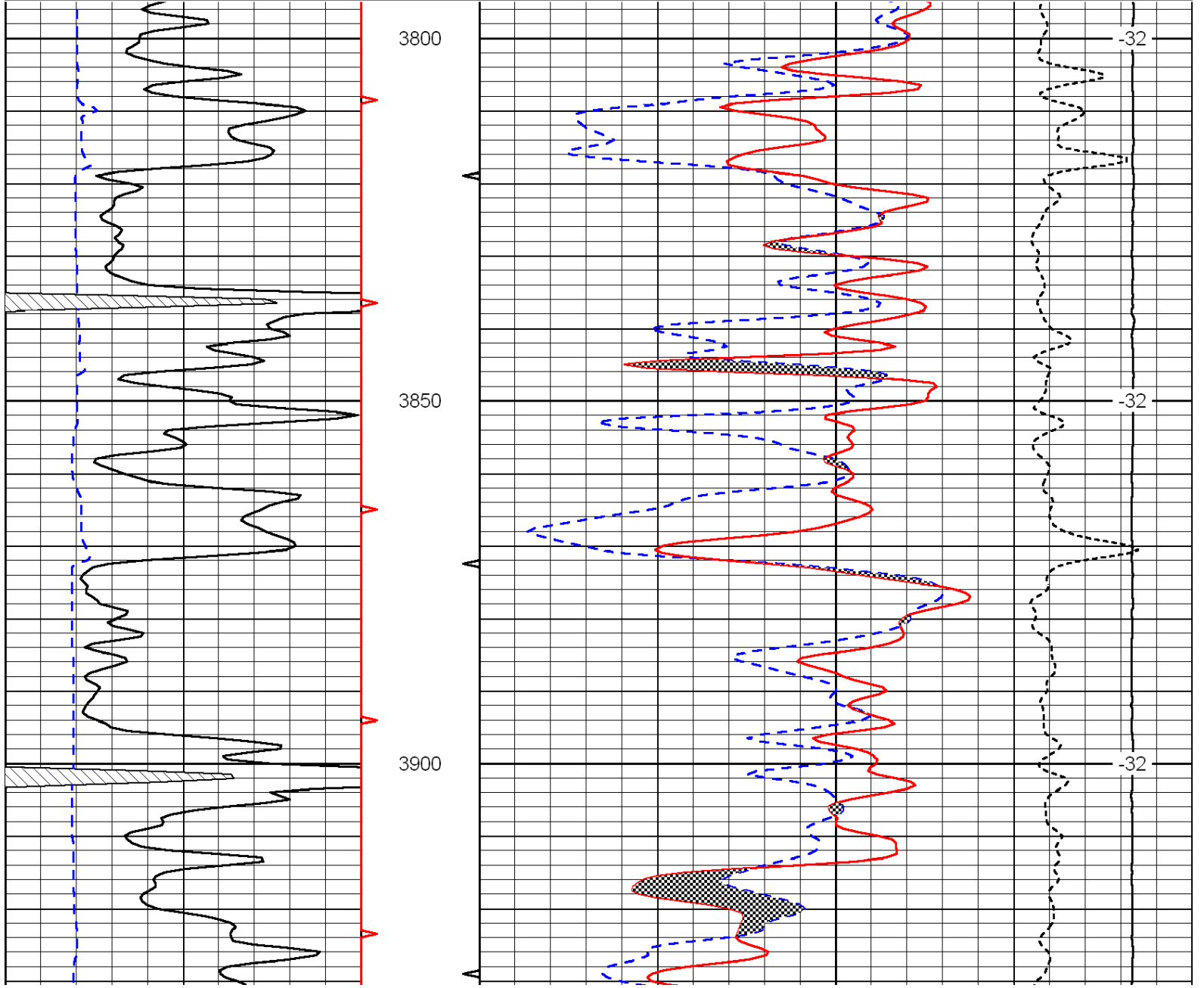
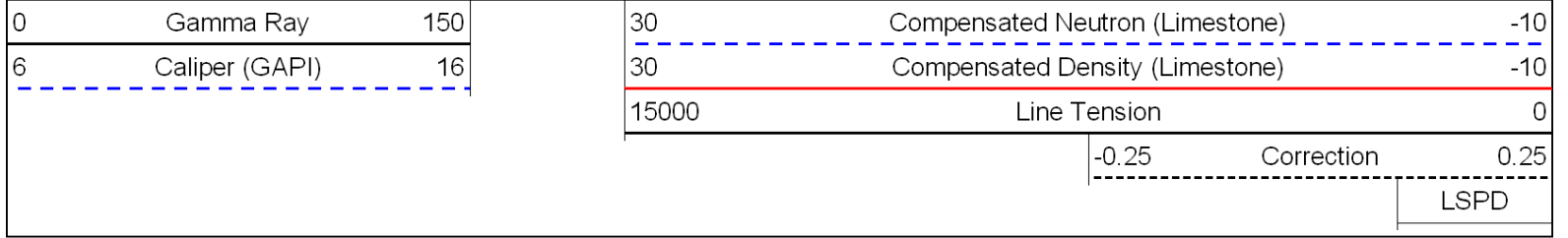
30	Compensated Density	-10
2	Bulk Density	3
15000	Line Tension	0
-0.25	Correction	0.25
LSPD		

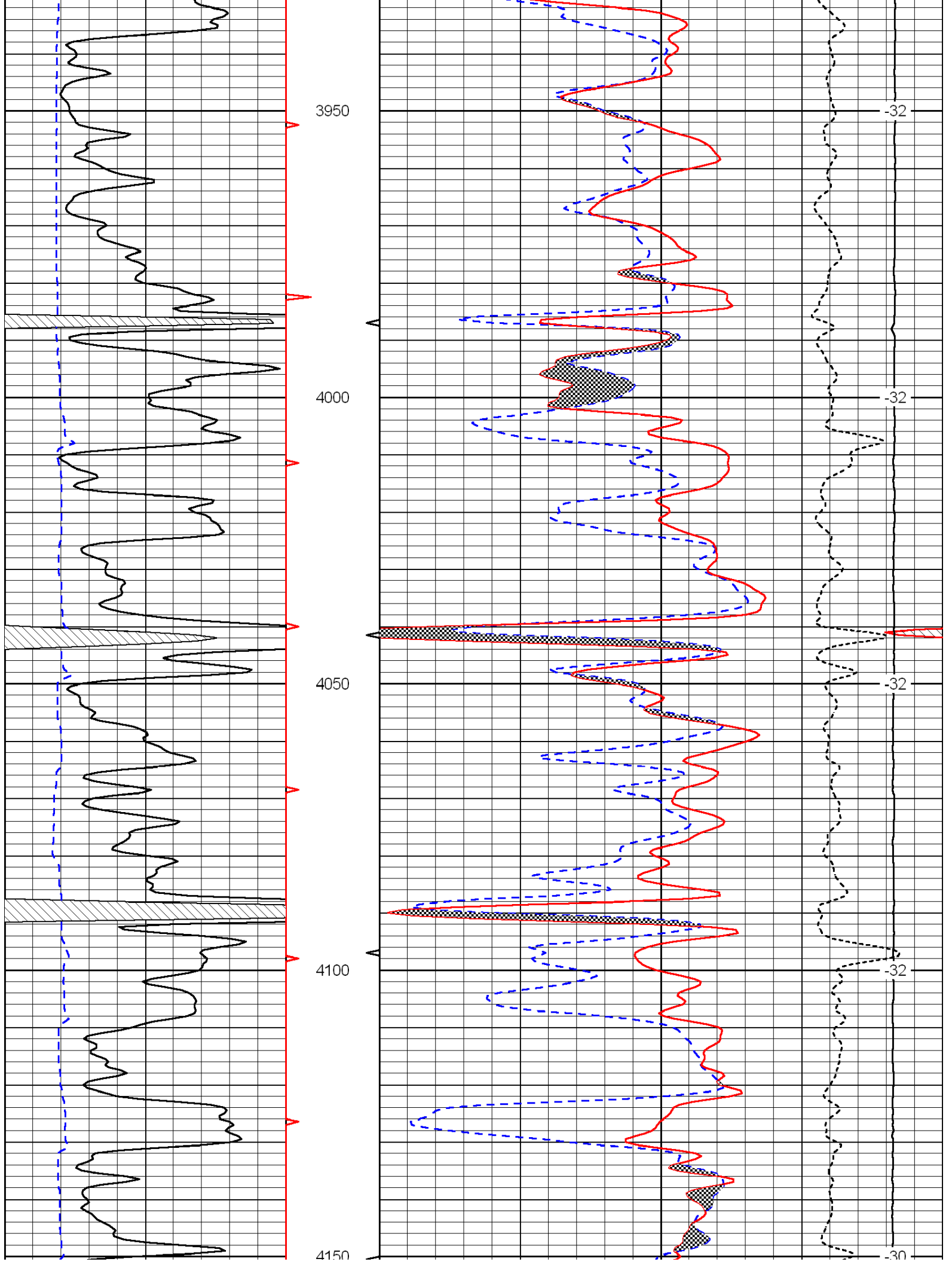


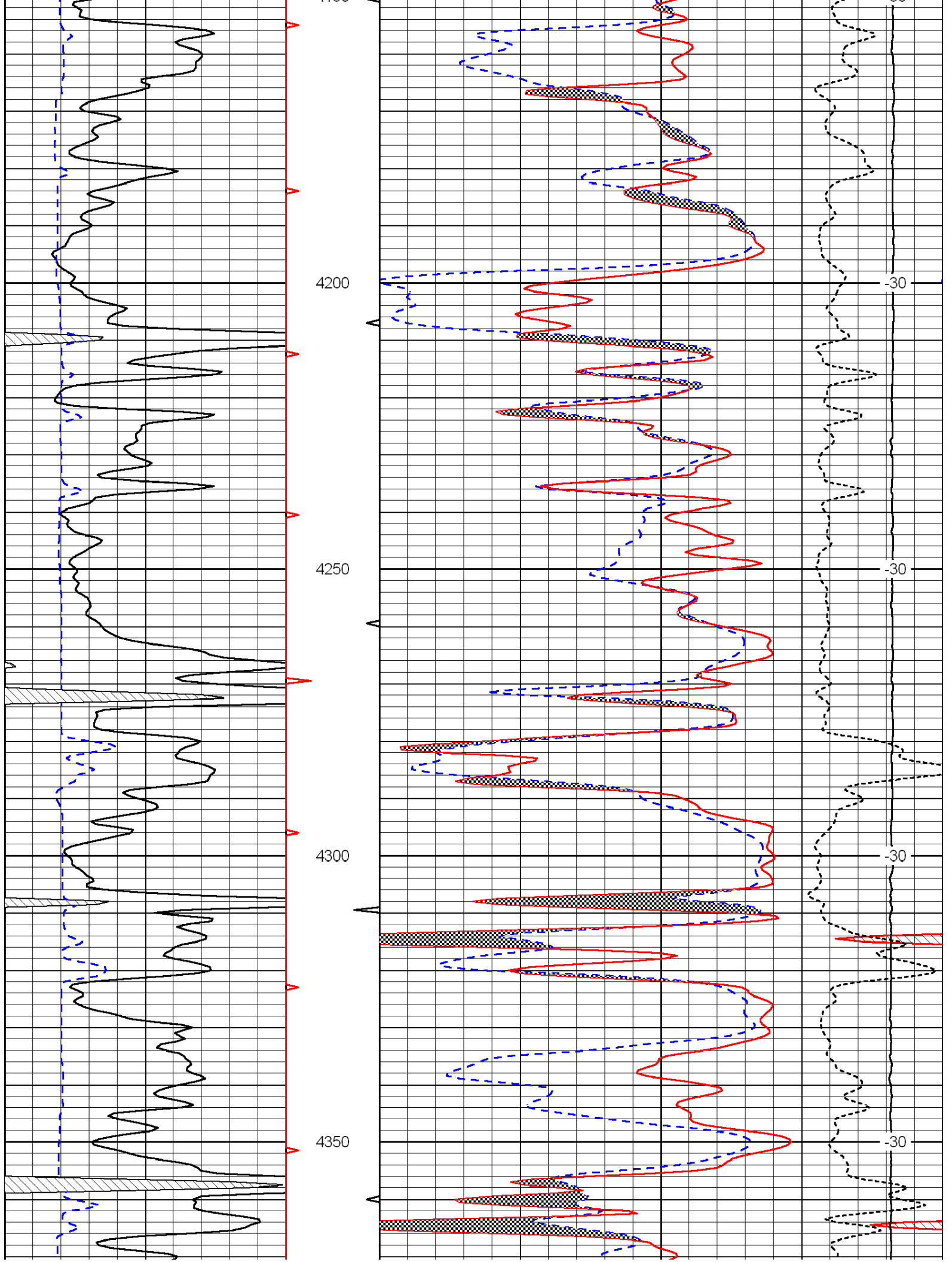


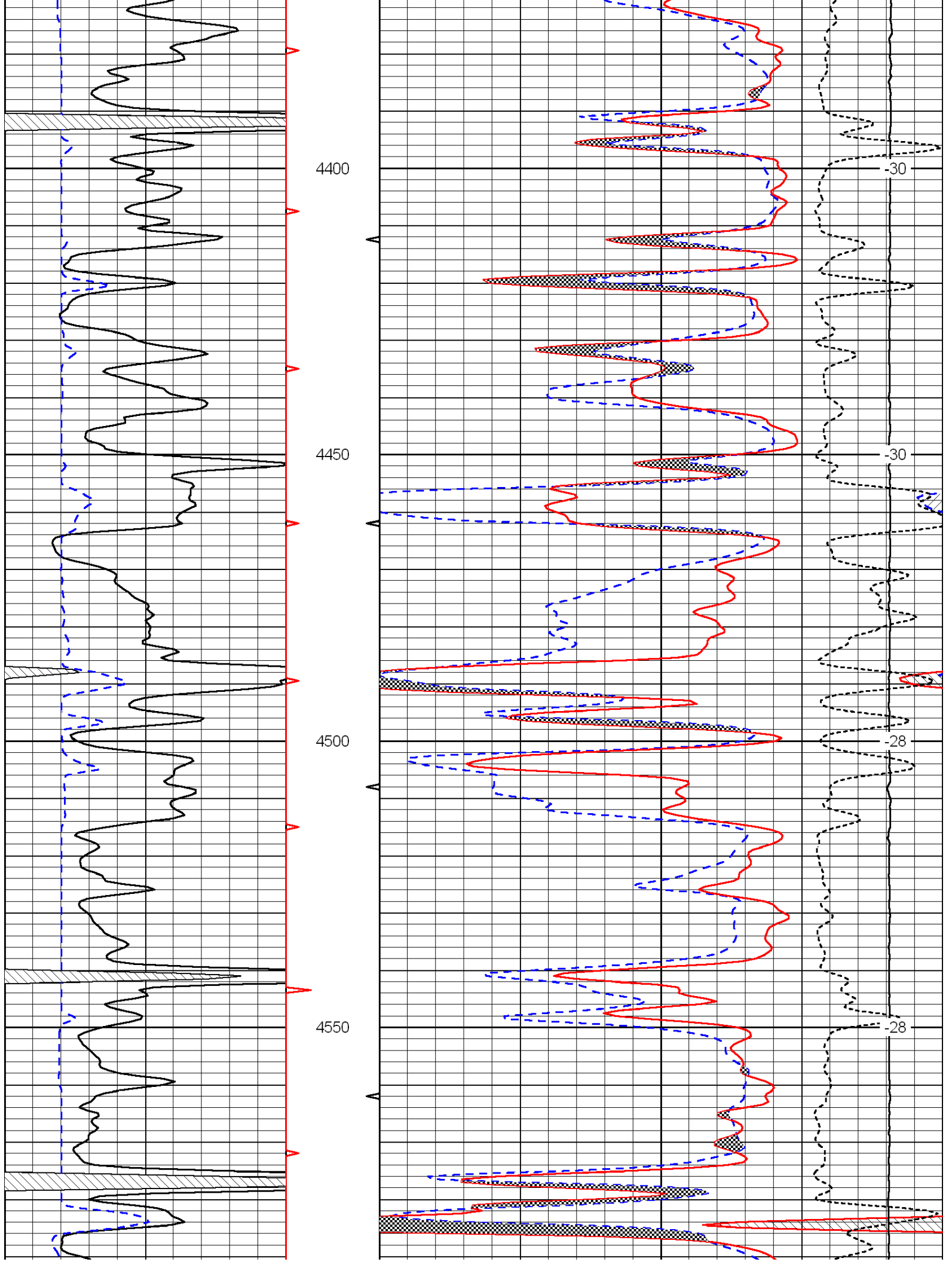


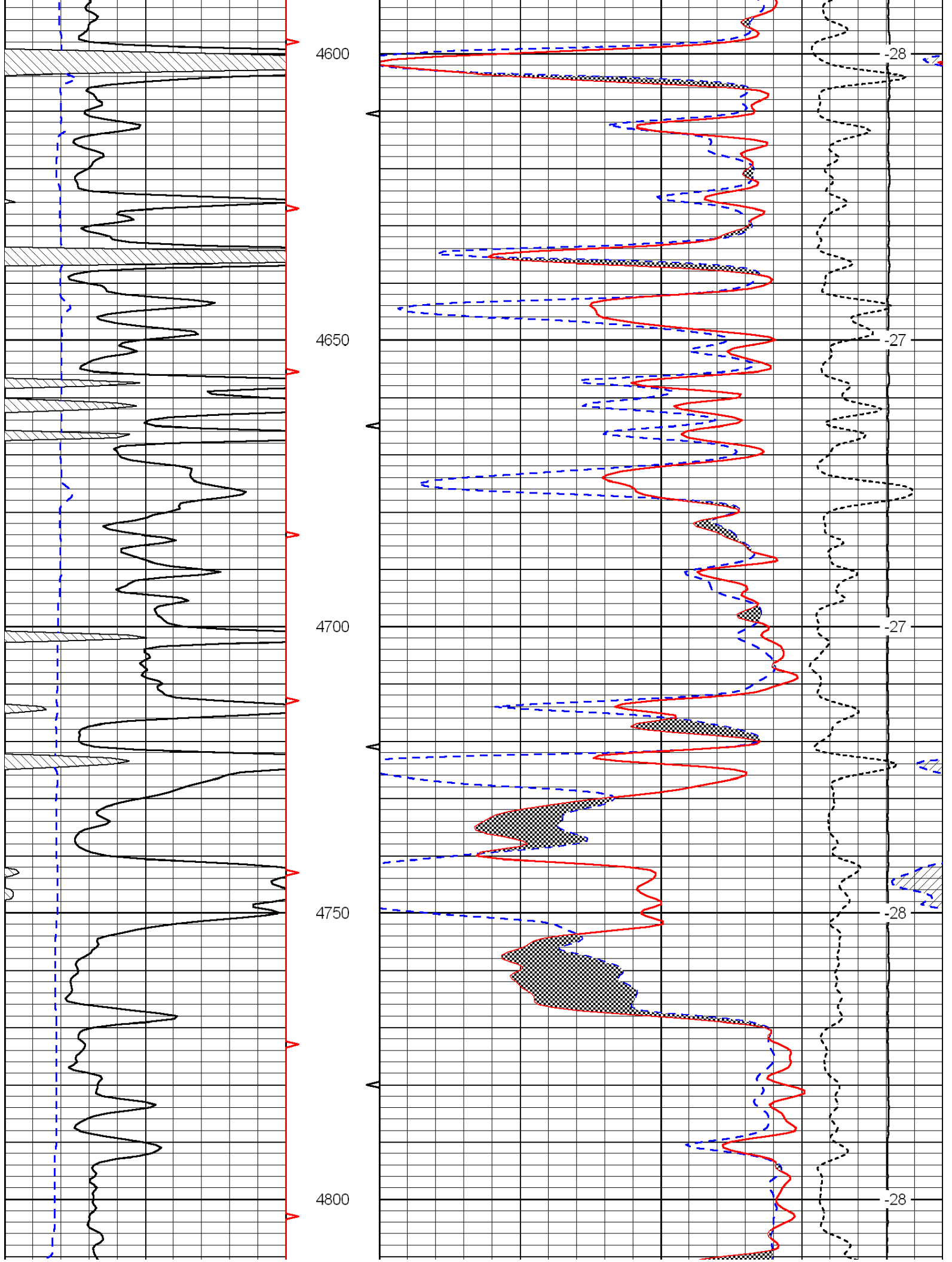
Database File: c:\warrior\data\murfin_schertz #1-28\murfin_schertz_1-28hd.db
 Dataset Pathname: dil/murfstck
 Presentation Format: cndlspec
 Dataset Creation: Wed Mar 07 05:54:04 2012
 Charted by: Depth in Feet scaled 1:240

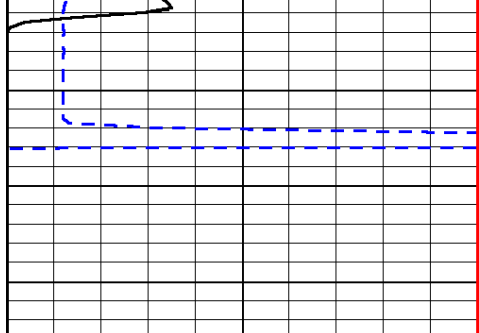




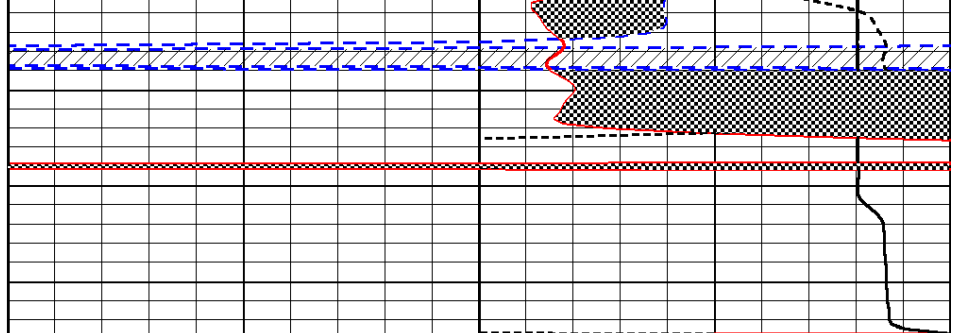








0	Gamma Ray	150
6	Caliper (GAPI)	16



30	Compensated Neutron (Limestone)	-10
30	Compensated Density (Limestone)	-10

15000	Line Tension	0
-------	--------------	---

-0.25	Correction	0.25
-------	------------	------

LSPD