



DIGITAL LOG (785) 625-3858

Microresistivity Log

15-193-20,841-00-00

API No.

Company Murfin Drilling Company, Inc.

Well Schertz No. 1-28

Field

County Thomas State Kansas

Location NW SE SW NW  
2,077' FNL & 963' FWL

Sec: 28 Twp: 10S Rge: 34W

Other Services  
CNL/CDL  
DIL/BHCS

Elevation

K.B. 3209  
D.F.  
G.L. 3196

Permanent Datum Ground Level Elevation 3196  
Log Measured From Kelly Bushing 13 Ft. Above Perm. Datum  
Drilling Measured From Kelly Bushing

Date	3/7/2012	
Run Number	Two	
Depth Driller	4840	
Depth Logger	4832	
Bottom Logged Interval	4831	
Top Log Interval	3800	
Casing Driller	8,625 @ 235	
Casing Logger	232	
Bit Size	7.875	
Type Fluid in Hole	Chemical	
Salinity, ppm CL	9300	
Density / Viscosity	9.1   46	
pH / Fluid Loss	11.0   7.6	
Source of Sample	Flowline	
Rm @ Meas. Temp	.24 @ 68	
Rmf @ Meas. Temp	.18 @ 68	
Rmc @ Meas. Temp	.32 @ 68	
Source of Rmf / Rmc	Charts	
Rm @ BHT	.13 @ 124	
Operating Rig Time	5 Hours	
Max Rec. Temp. F	124	
Equipment Number	10	
Location	Hays	
Recorded By	J. Long	
Witnessed By	Tom Funk	

<<< Fold Here >>>

All interpretations are opinions based on inferences from electrical or other measurements and we cannot and do not guarantee the accuracy or correctness of any interpretation, and we shall not, except in the case of gross or willful negligence on our part, be liable or responsible for any loss, costs, damages, or expenses incurred or sustained by anyone resulting from any interpretation made by any of our officers, agents or employees. These interpretations are also subject to our general terms and conditions set out in our current Price Schedule.

Comments

Thank you for using Log-Tech, Inc.  
(785) 625-3858

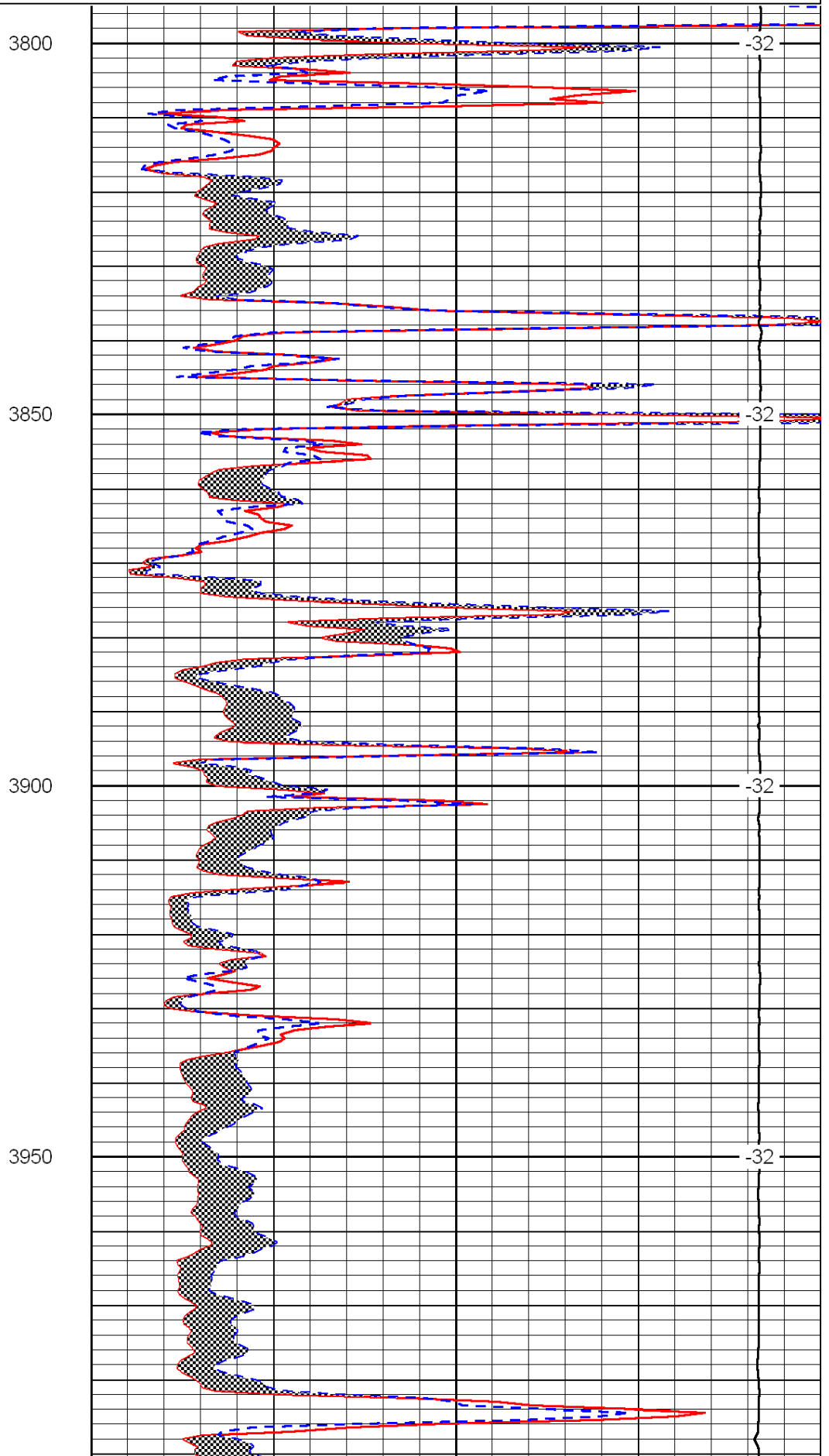
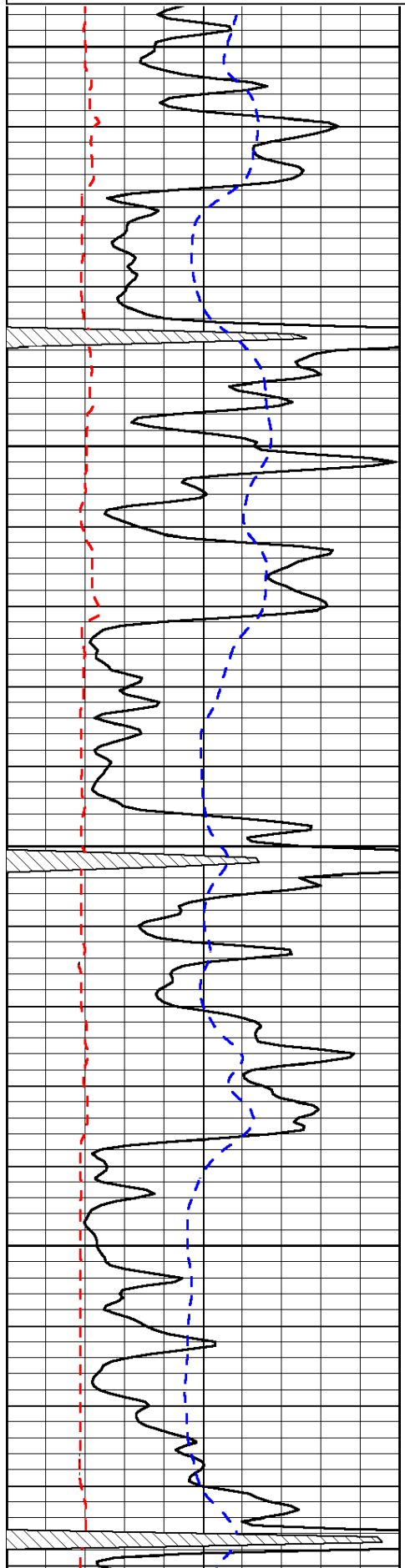
Monument, 2 West to Highway 25, 2 North to Curve, 4 West on A Road, 1 1/2 North on 15 Road, East Into

Database File: c:\warrior\data\murfin\_schertz #1-28\murfin\_schertz\_1-28hd.db  
 Dataset Pathname: dil/murfstck  
 Presentation Format: micro  
 Dataset Creation: Wed Mar 07 05:54:04 2012  
 Charted by: Depth in Feet scaled 1:240

0	Gamma Ray	150
6	Micro Log Caliper (GAPI)	16
-200	SP (mV)	0

0	Micro Inverse 1 X 1	40
0	Micro Normal 2"	40
15000	Line Weight	0

LSPD



3800

-32

3850

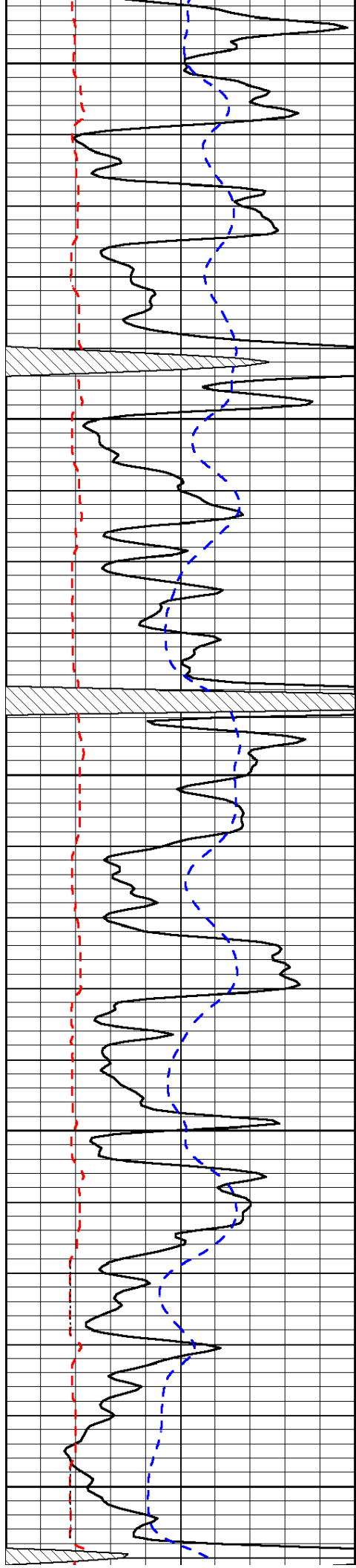
-32

3900

-32

3950

-32



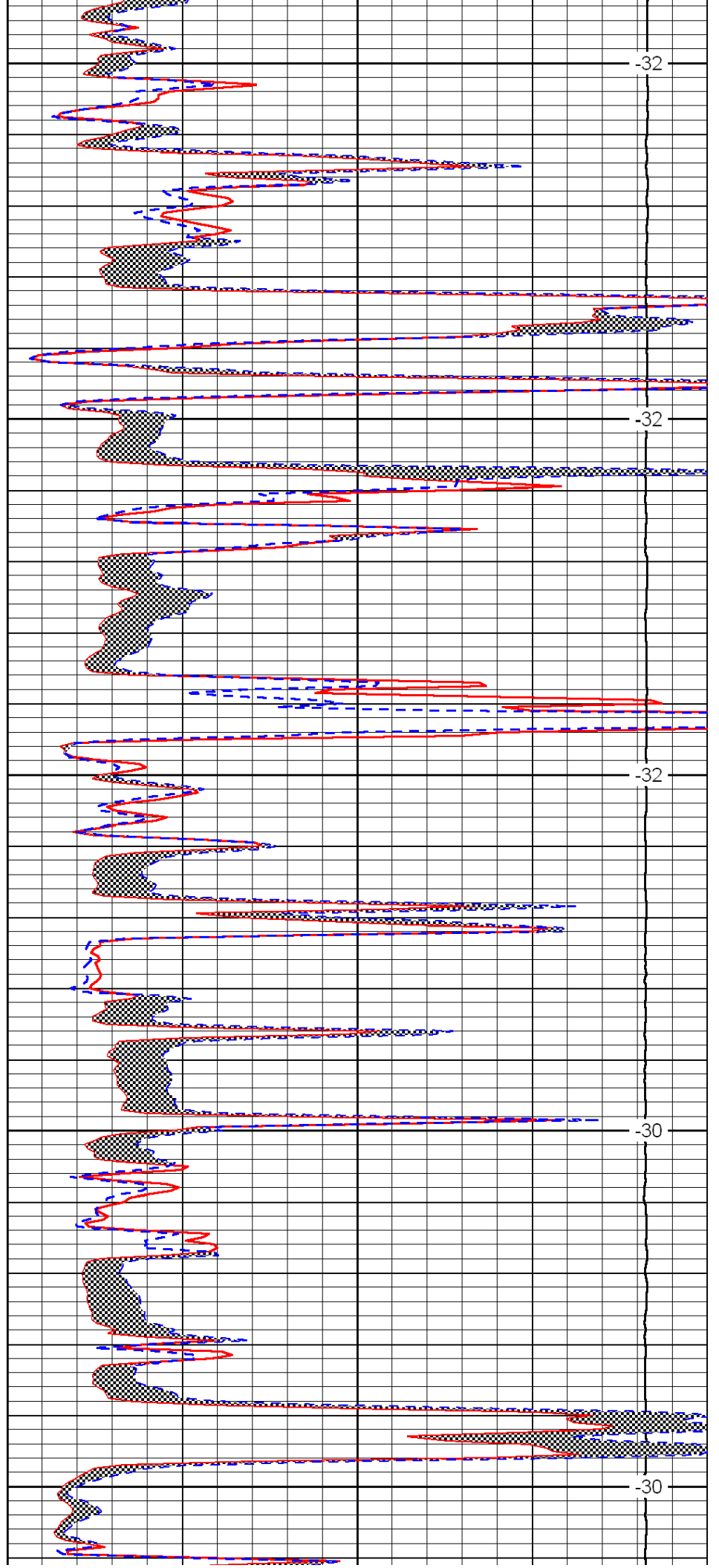
4000

4050

4100

4150

4200



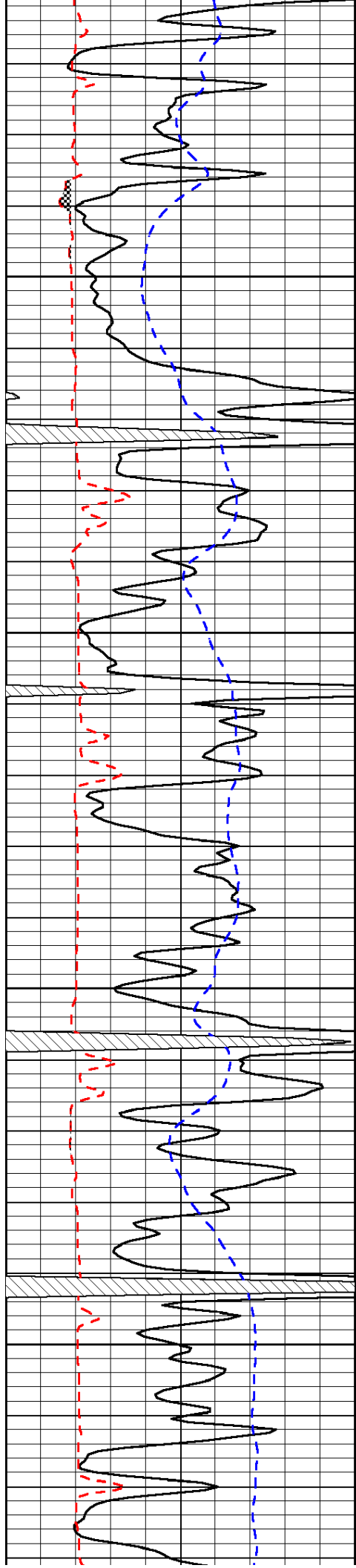
-32

-32

-32

-30

-30

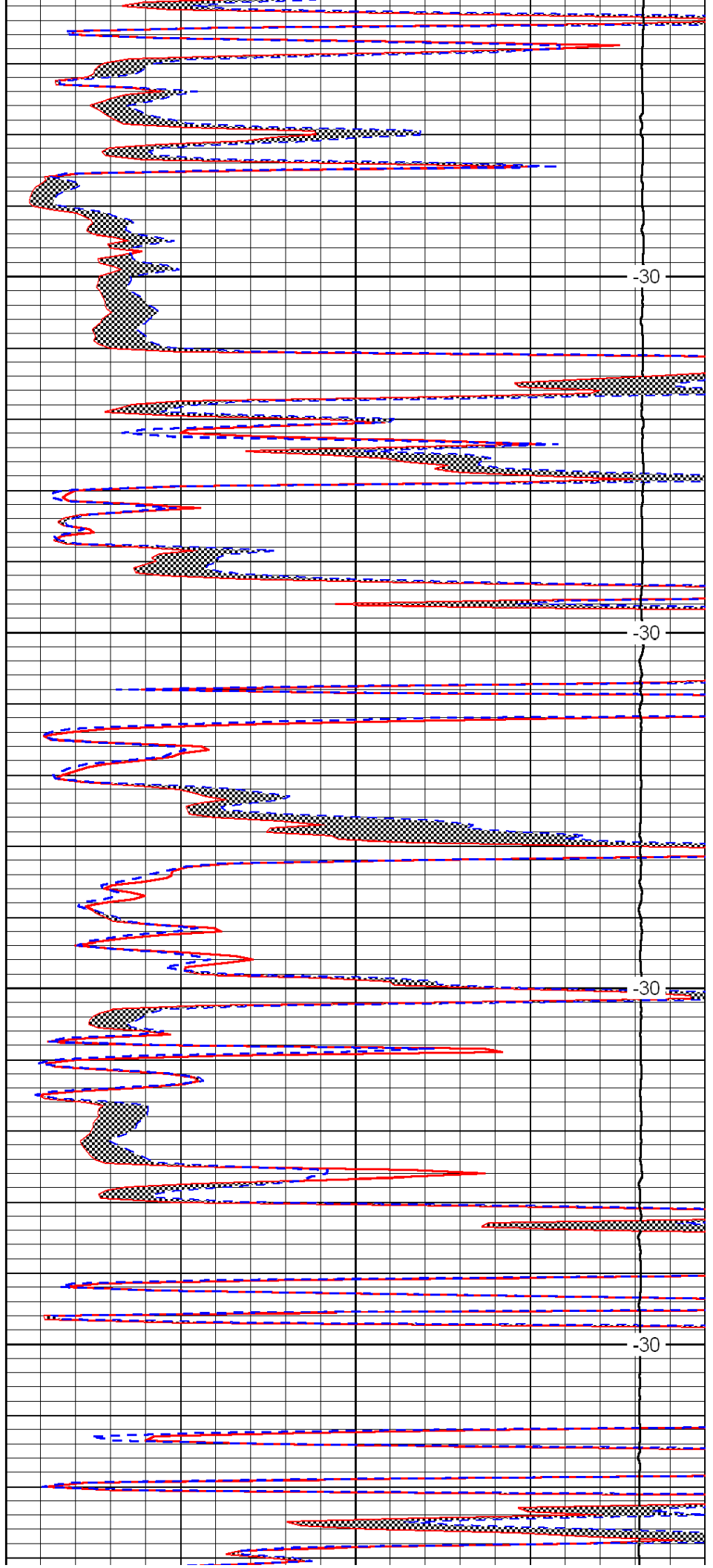


4250

4300

4350

4400

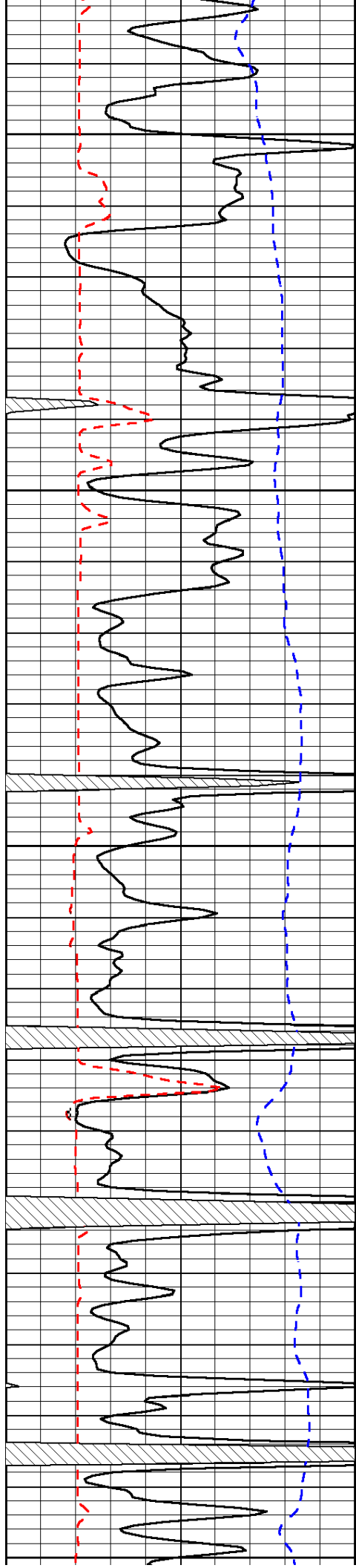


-30

-30

-30

-30



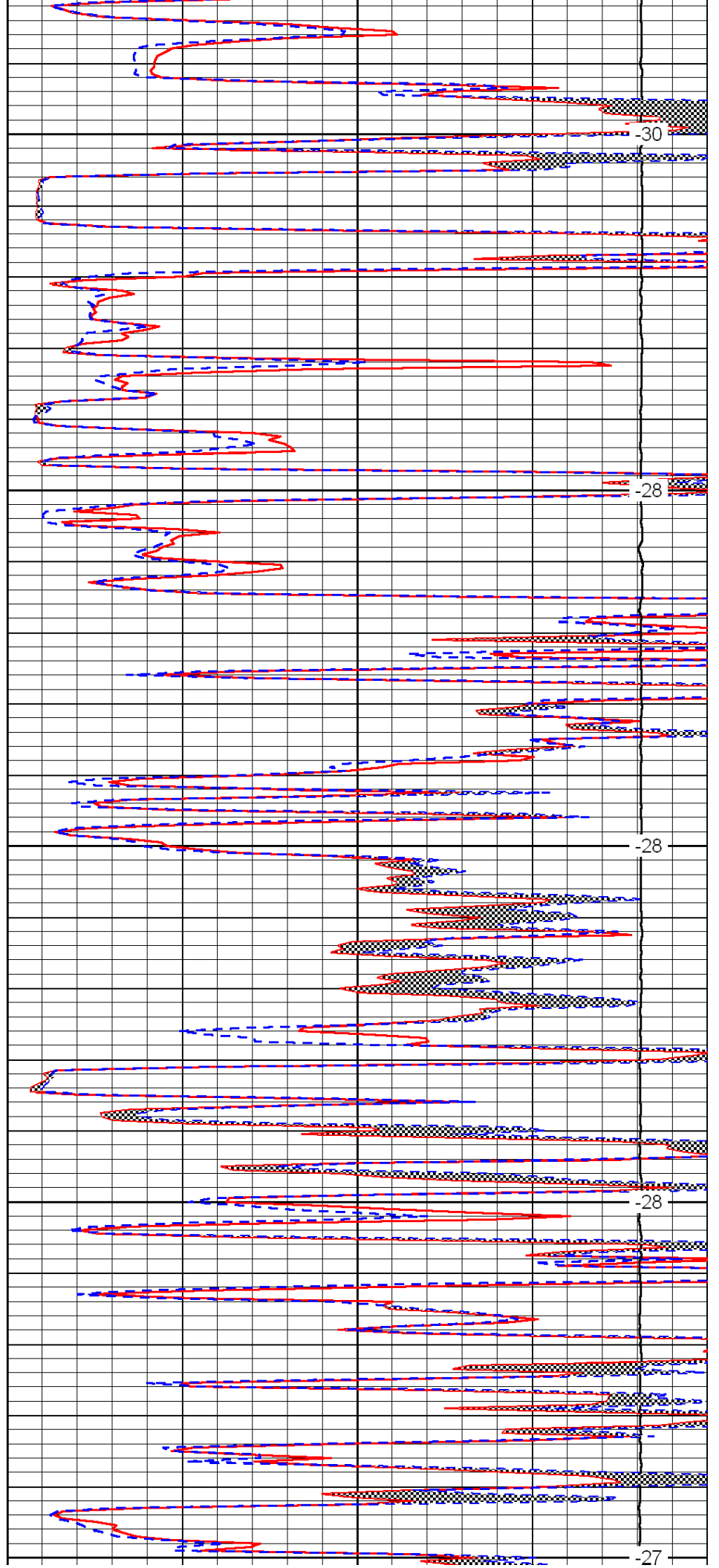
4450

4500

4550

4600

4650



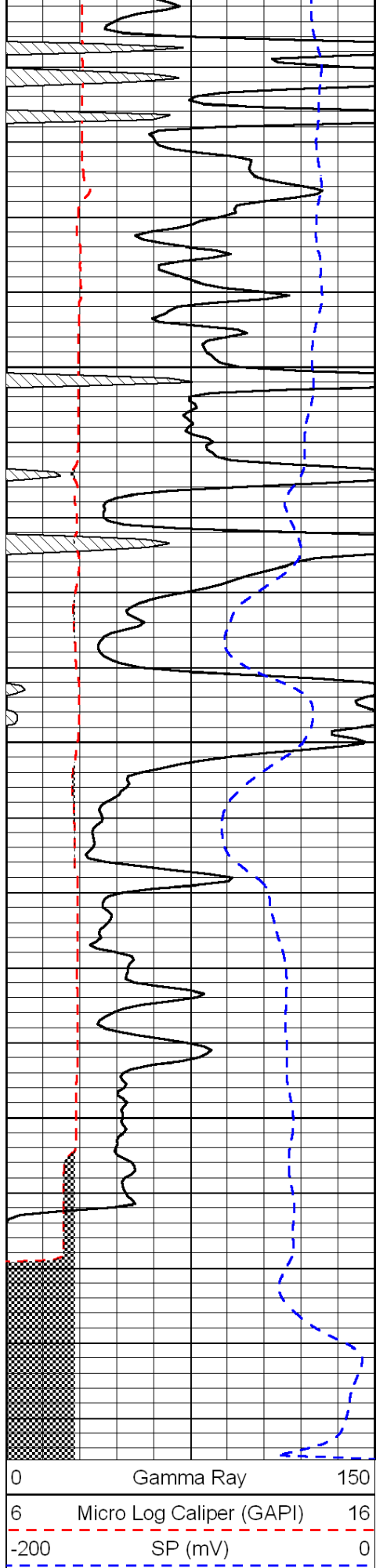
-30

-28

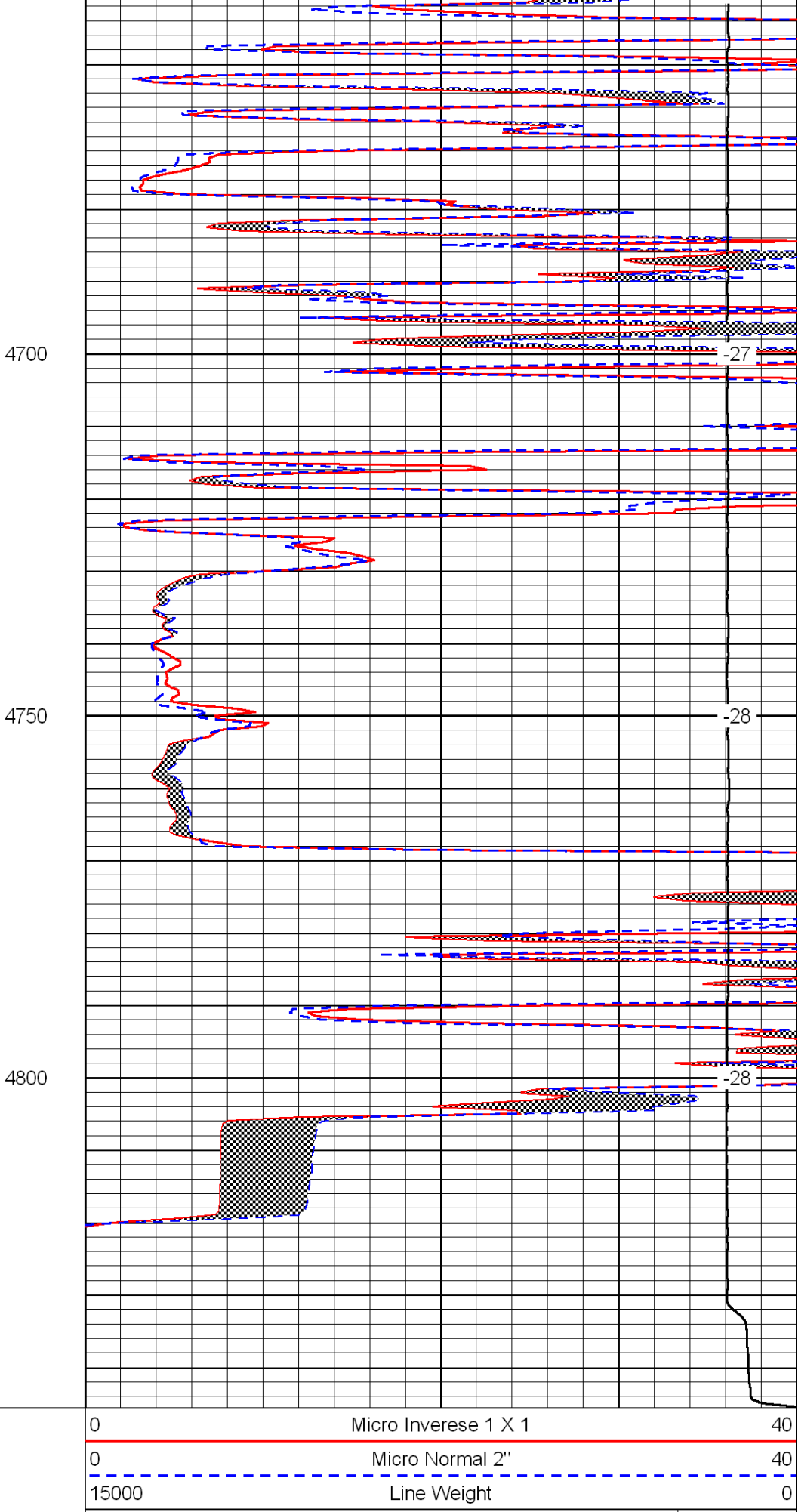
-28

-28

-27



0	Gamma Ray	150
6	Micro Log Caliper (GAPI)	16
-200	SP (mV)	0



0	Micro Inverse 1 X 1	40
0	Micro Normal 2''	40
15000	Line Weight	0