



DIGITAL LOG (785) 625-3858

Borehole Compensated
Sonic Log

15-193-20,841-00-00

API No.

Company **Murfin Drilling Company, Inc.**

Well **Schertz No. 1-28**

Field

County **Thomas**

State **Kansas**

Location
**NW SE SW NW
2,077' FNL & 963' FWL**

Sec: **28** Twp: **10S** Rge: **34W**

Other Services
CNL/CDL
MEL/DIL

Elevation

Permanent Datum **Ground Level** Elevation **3196**

Log Measured From **Kelly Bushing** 13 Ft. Above Perm. Datum

Drilling Measured From **Kelly Bushing**

K.B. 3209
D.F.
G.L. 3196

Date	3/7/2012					
Run Number	Two					
Type Log	BHC Sonic					
Depth Driller	4840					
Depth Logger	4832					
Bottom Logged Interval	4821					
Top Logged Interval	200					
Type Fluid In Hole	Chemical					
Salinity, PPM CL	9300					
Density	9.1					
Level	Full					
Max. Rec. Temp. F	124					
Operating Rig Time	5 Hours					
Equipment -- Location	10 Hays					
Recorded By	J. Long					
Witnessed By	Tom Funk					
Borehole Record			Casing Record			
Run No.	Bit	From	To	Size	Wgt.	To
1	12.25	00	235	8.625	24#	235
2	7.875	235	4840			

<<< Fold Here >>>

All interpretations are opinions based on inferences from electrical or other measurements and we cannot and do not guarantee the accuracy or correctness of any interpretation, and we shall not, except in the case of gross or willful negligence on our part, be liable or responsible for any loss, costs, damages, or expenses incurred or sustained by anyone resulting from any interpretation made by any of our officers, agents or employees. These interpretations are also subject to our general terms and conditions set out in our current Price Schedule.

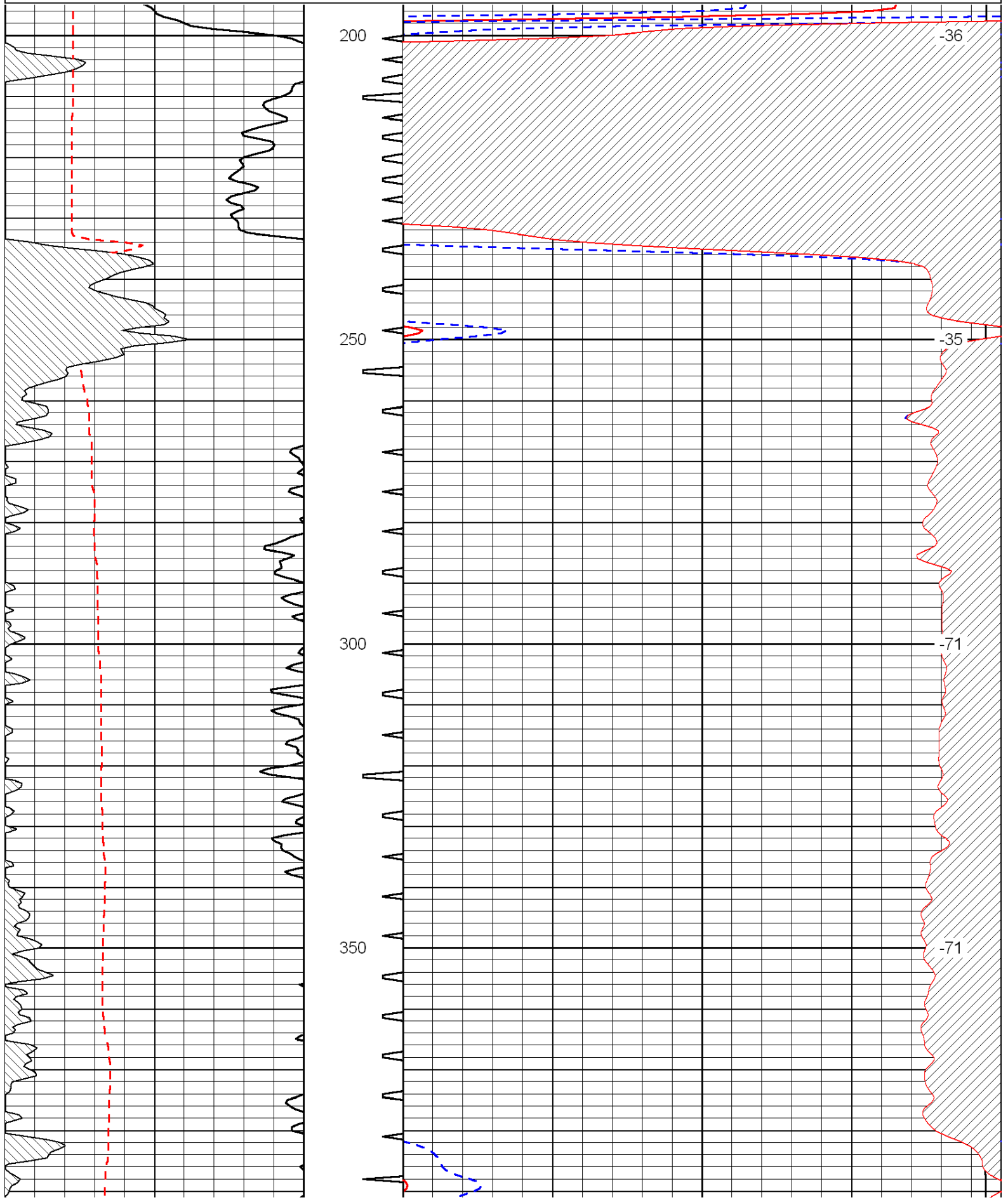
Comments

Thank you for using Log-Tech, Inc.
(785) 625-3858

Monument, 2 West to Highway 25, 2 North to Curve, 4 West on A Road, 1 1/2 North on 15 Road, East Into

Database File: c:\warrior\data\murfin_schertz #1-28\murfin_schertz_1-28hd.db
 Dataset Pathname: dil/murfstck
 Presentation Format: sonic
 Dataset Creation: Wed Mar 07 05:54:04 2012
 Charted by: Depth in Feet scaled 1:240

0	Gamma Ray	150	Sonic Int	140	Delta Time (usec/ft)	40
150	Gamma Ray	300	5	0	SPOR	-10
6	Caliper (GAPI)	16		15000	LTEN (lb)	0
						LSPD



200

-36

250

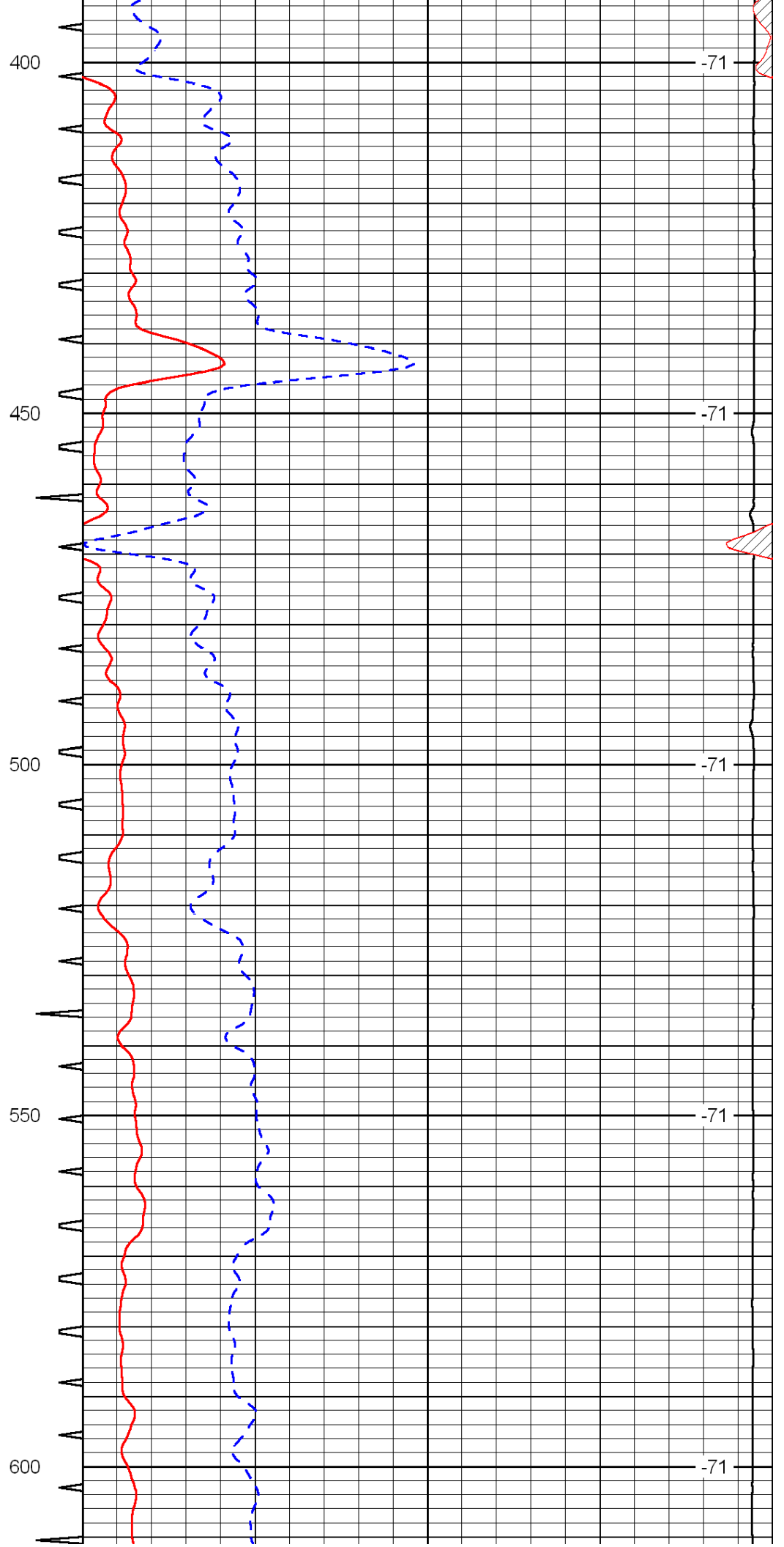
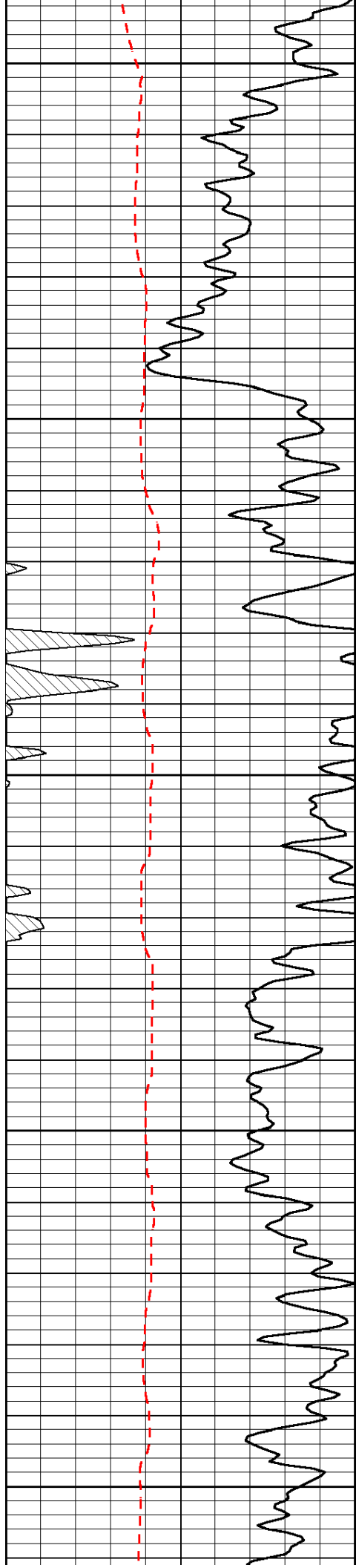
-35

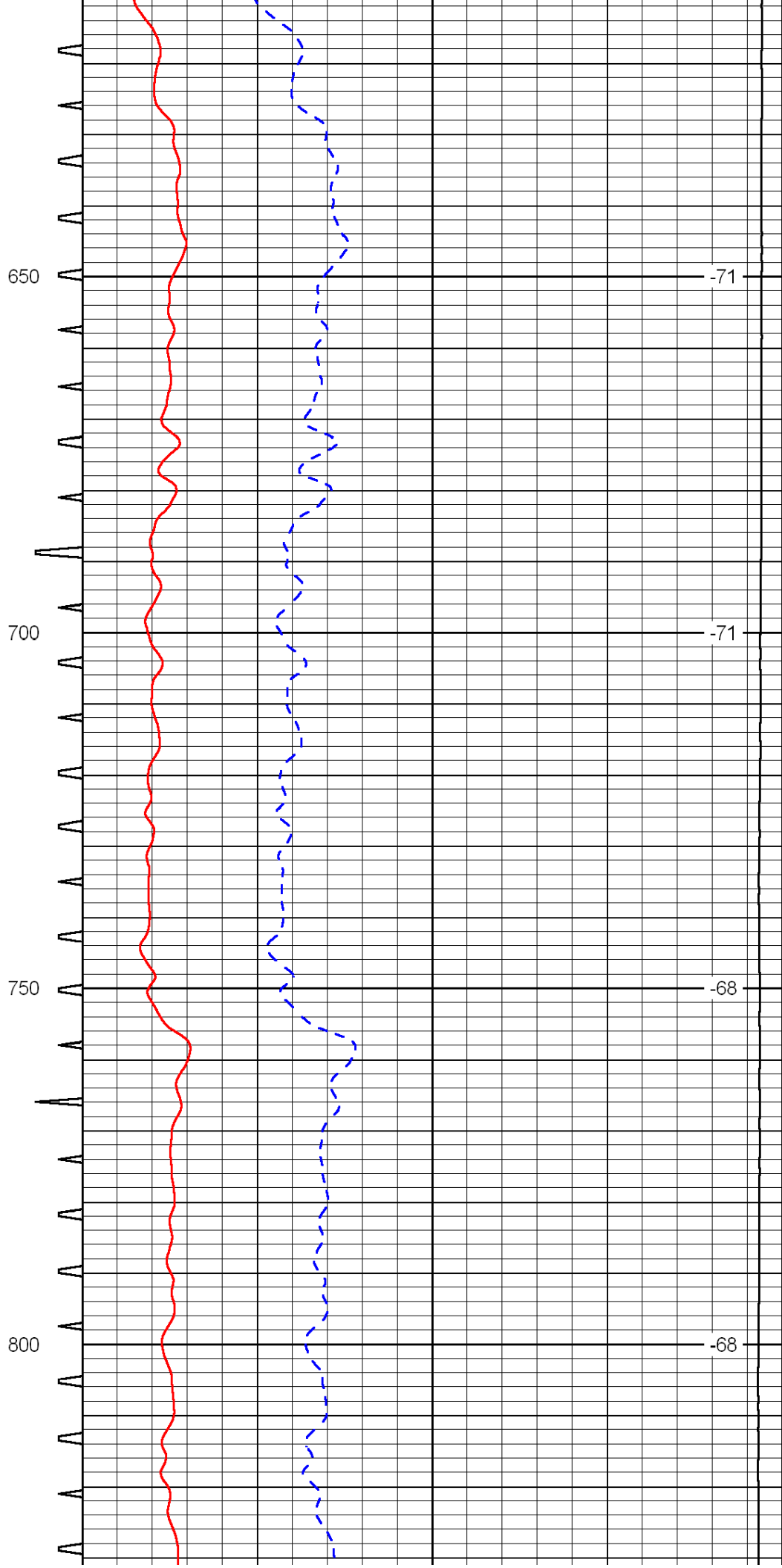
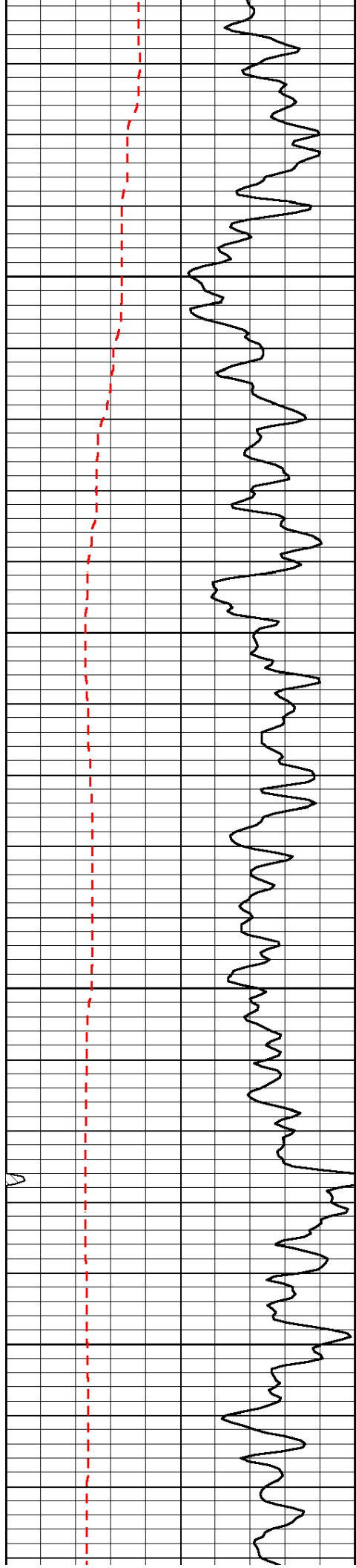
300

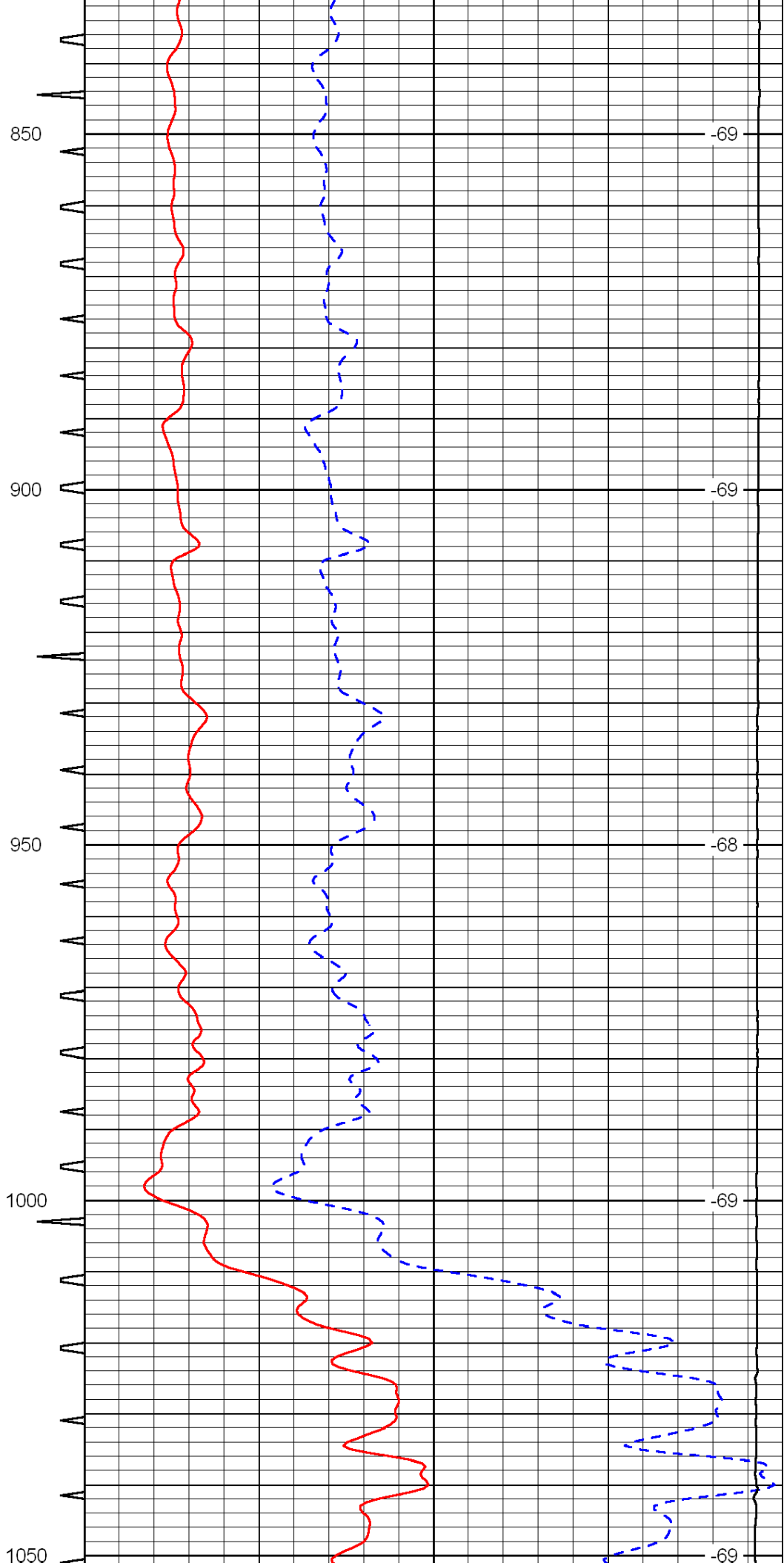
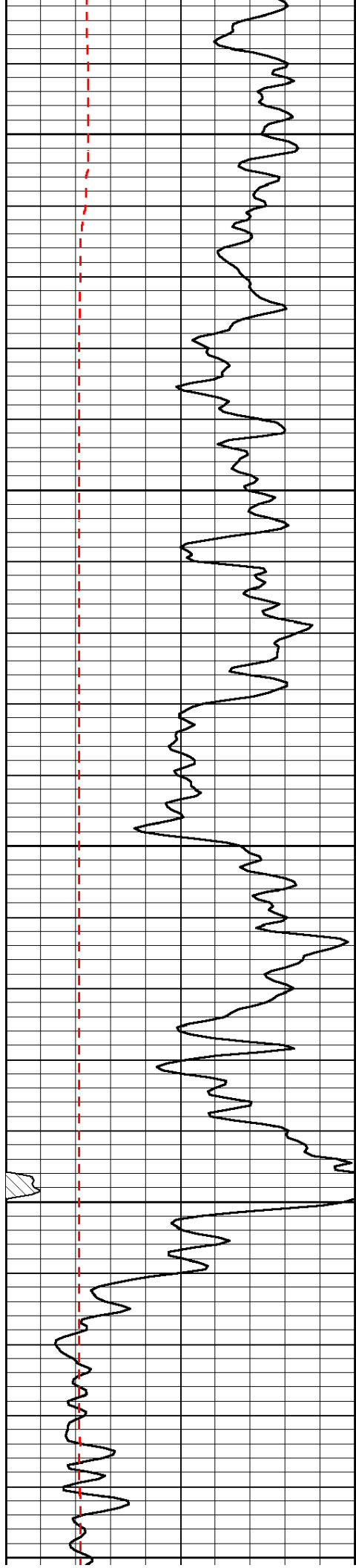
-71

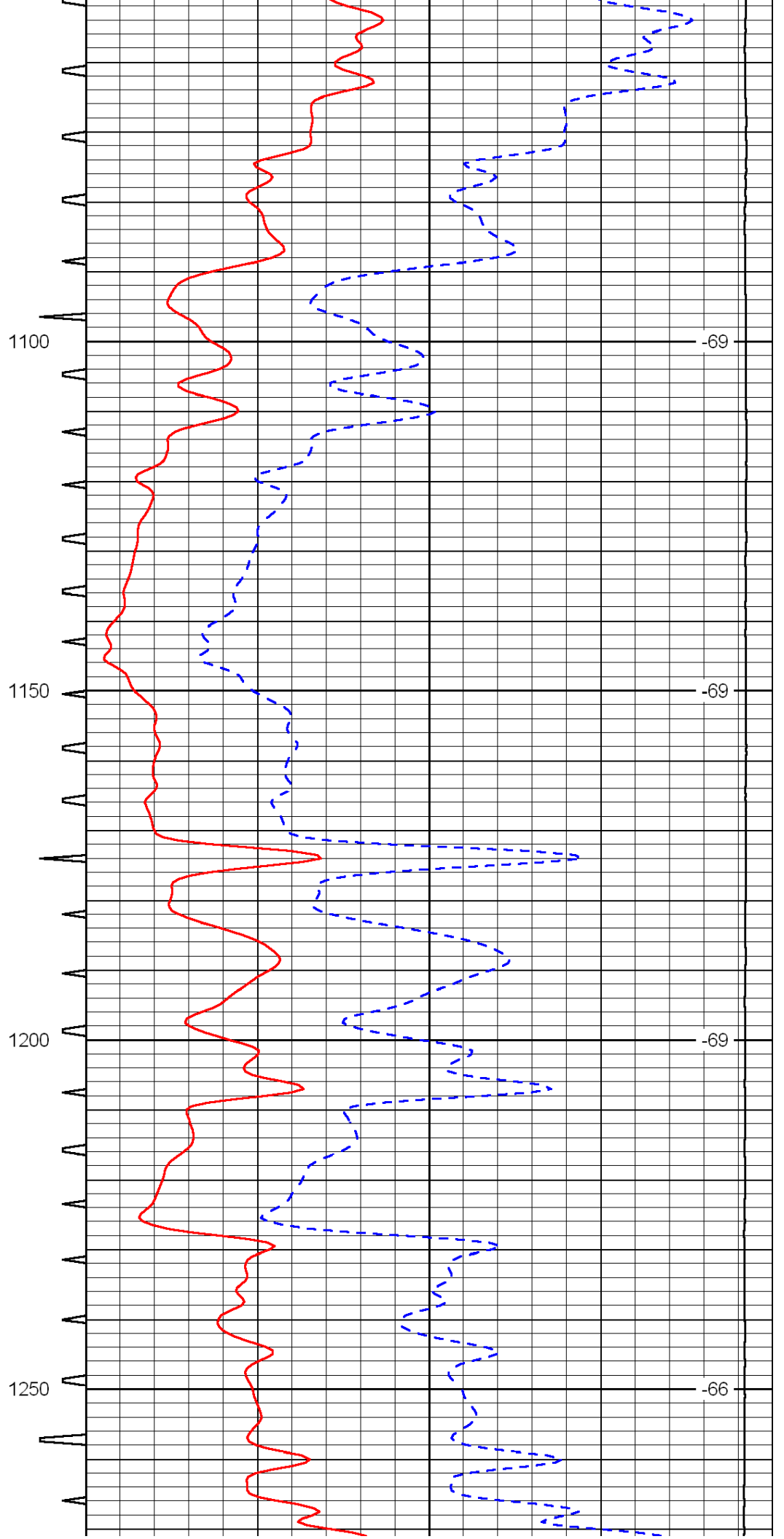
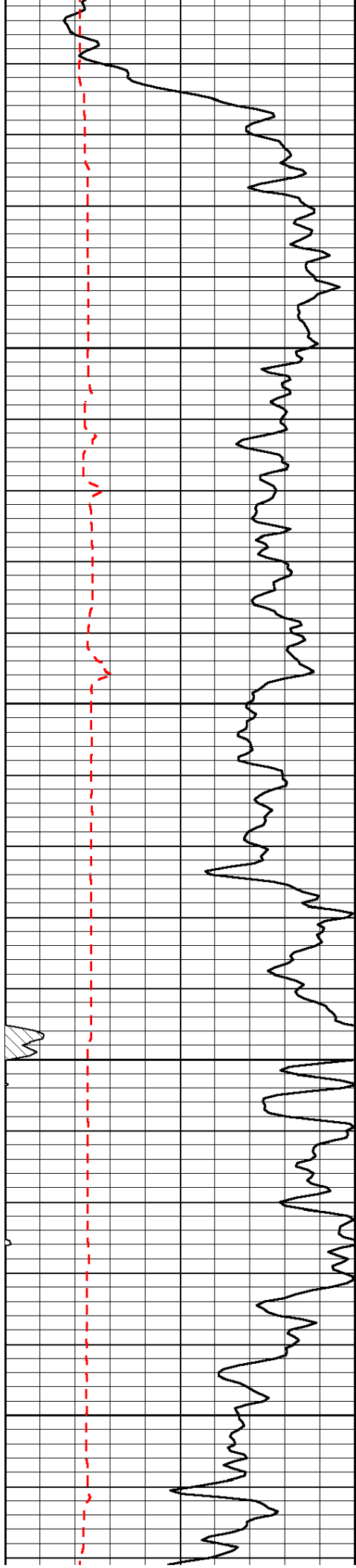
350

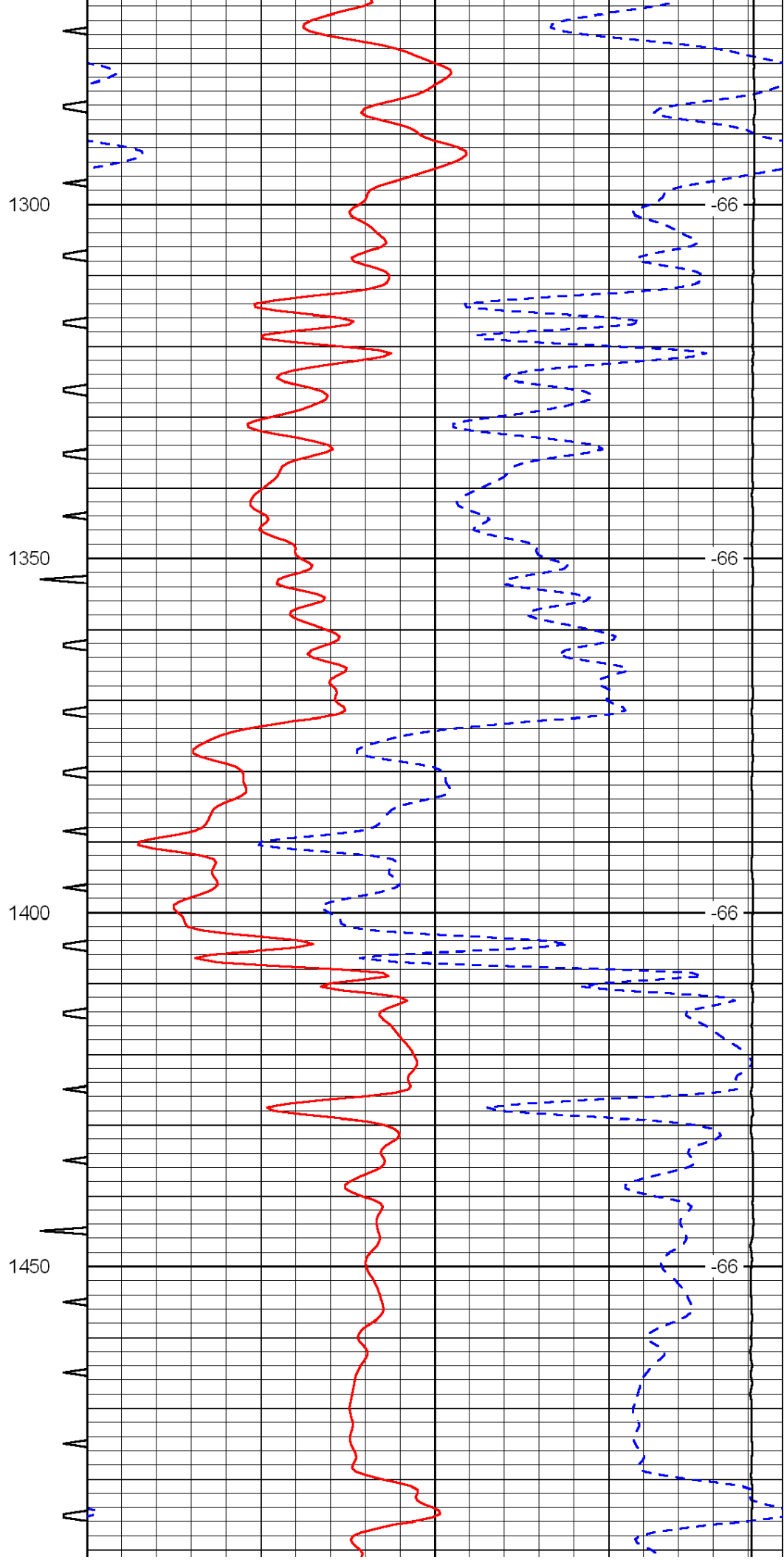
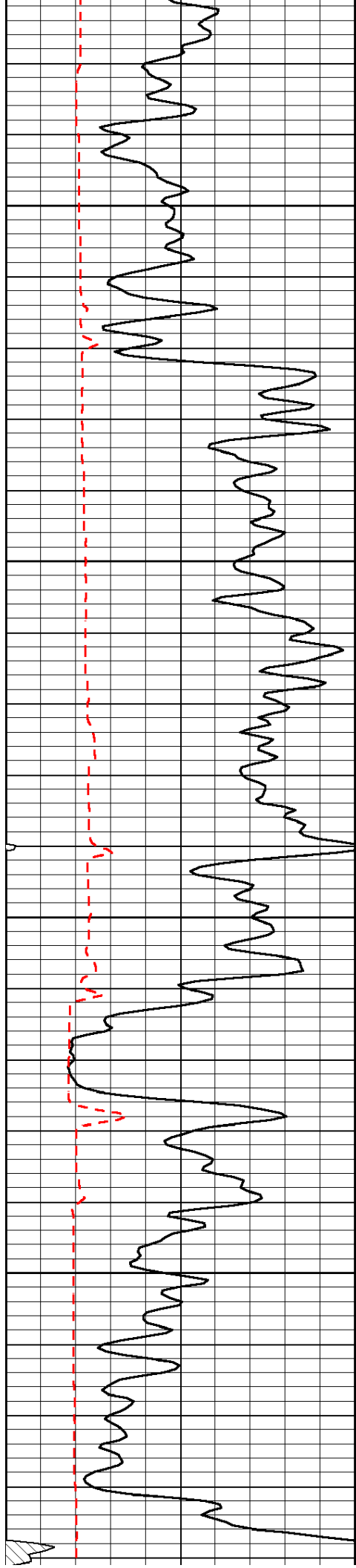
-71

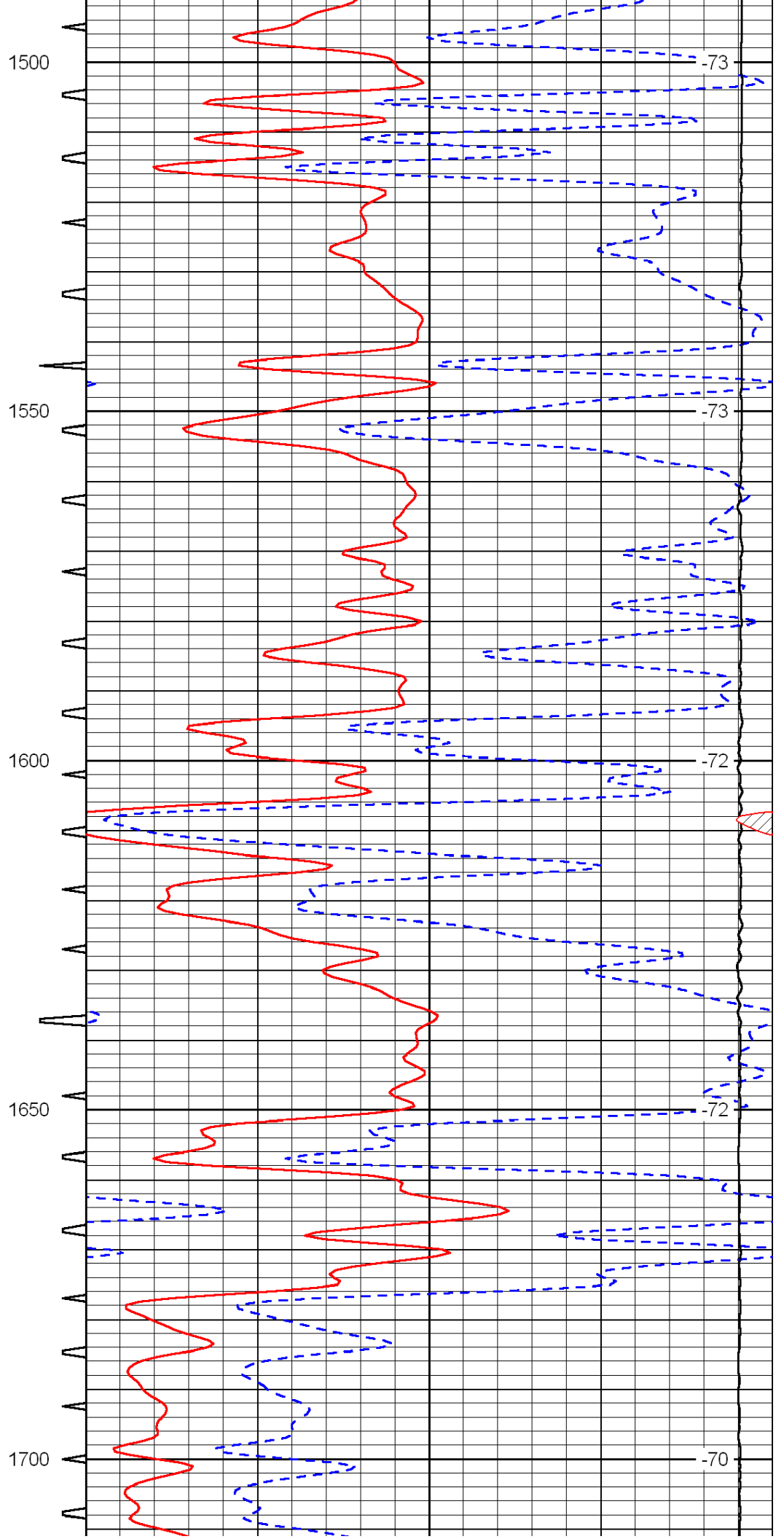
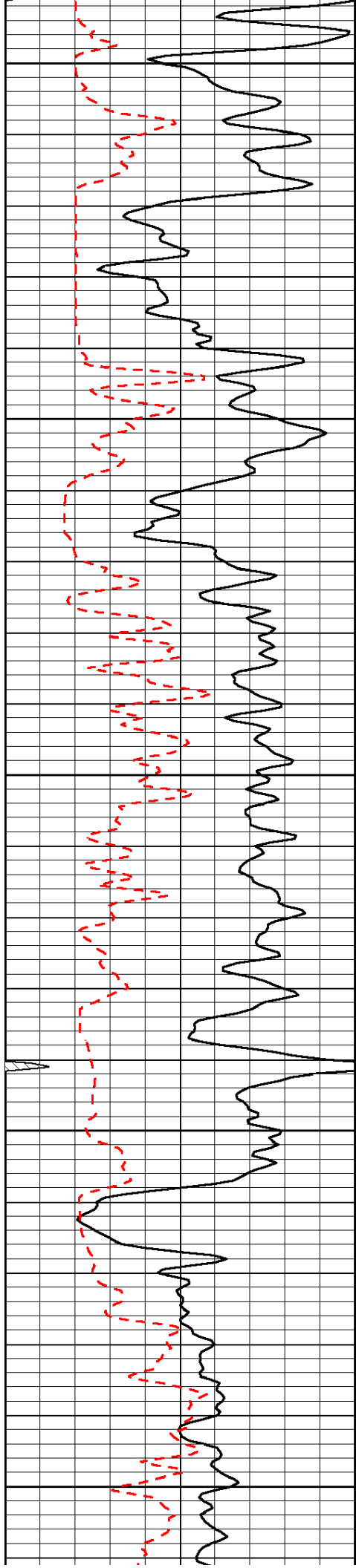


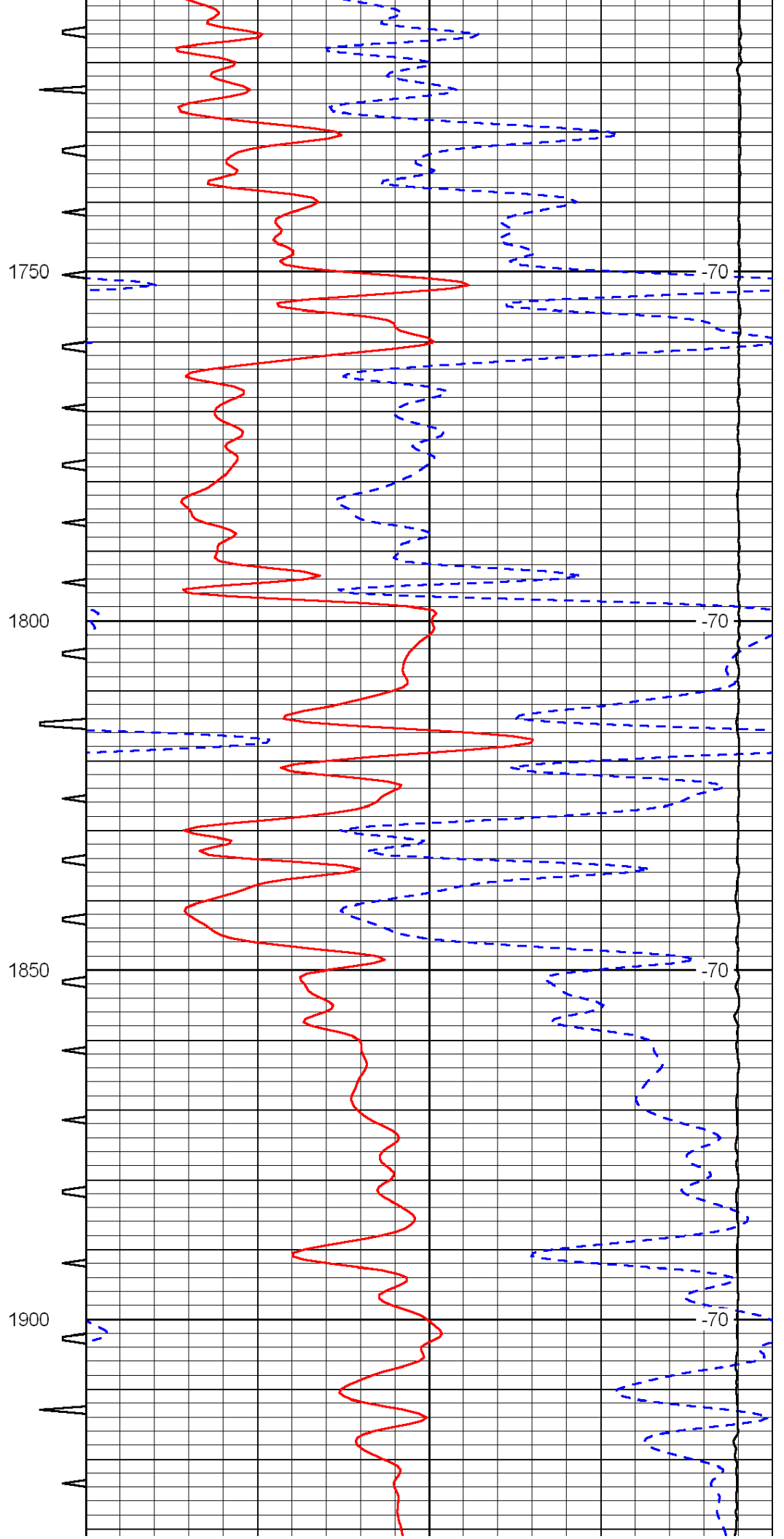
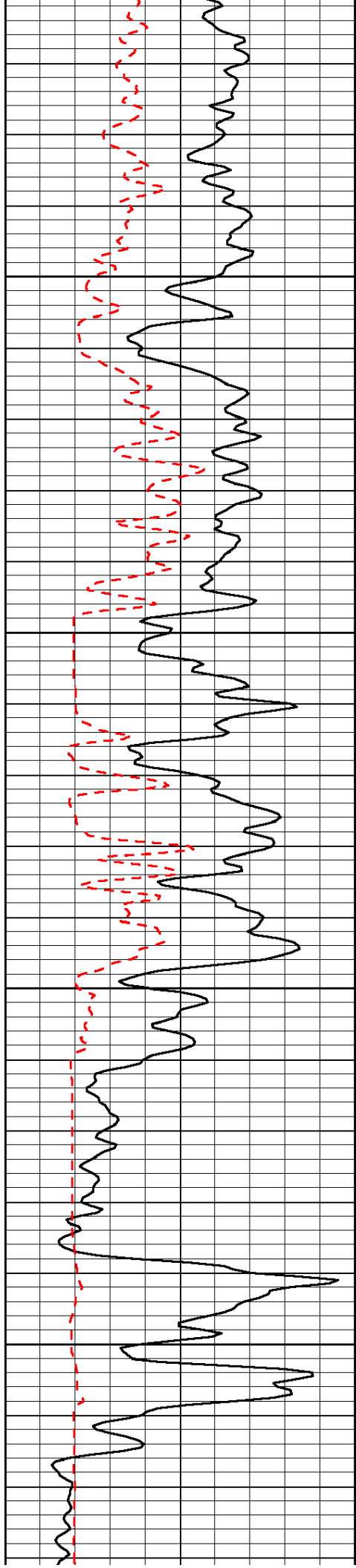


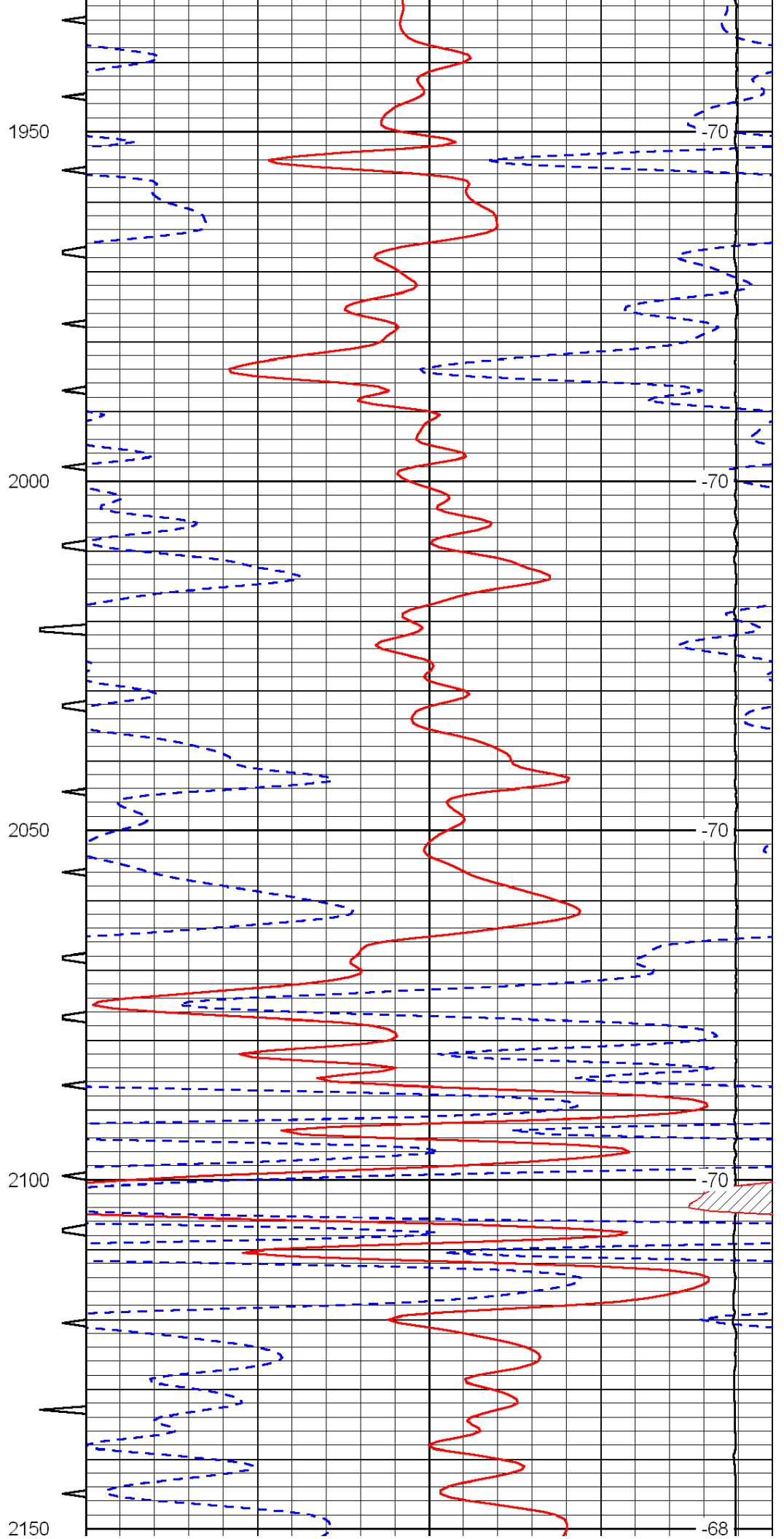
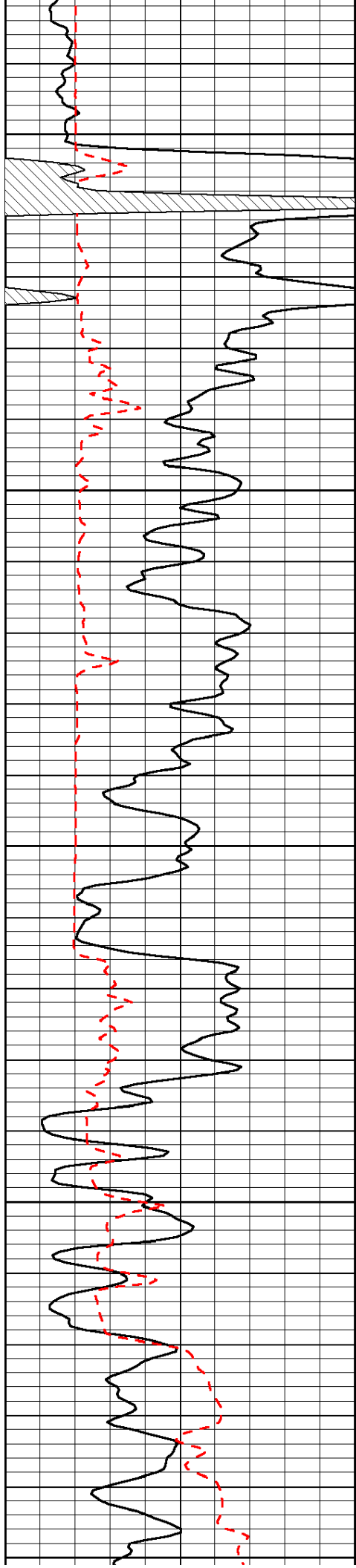


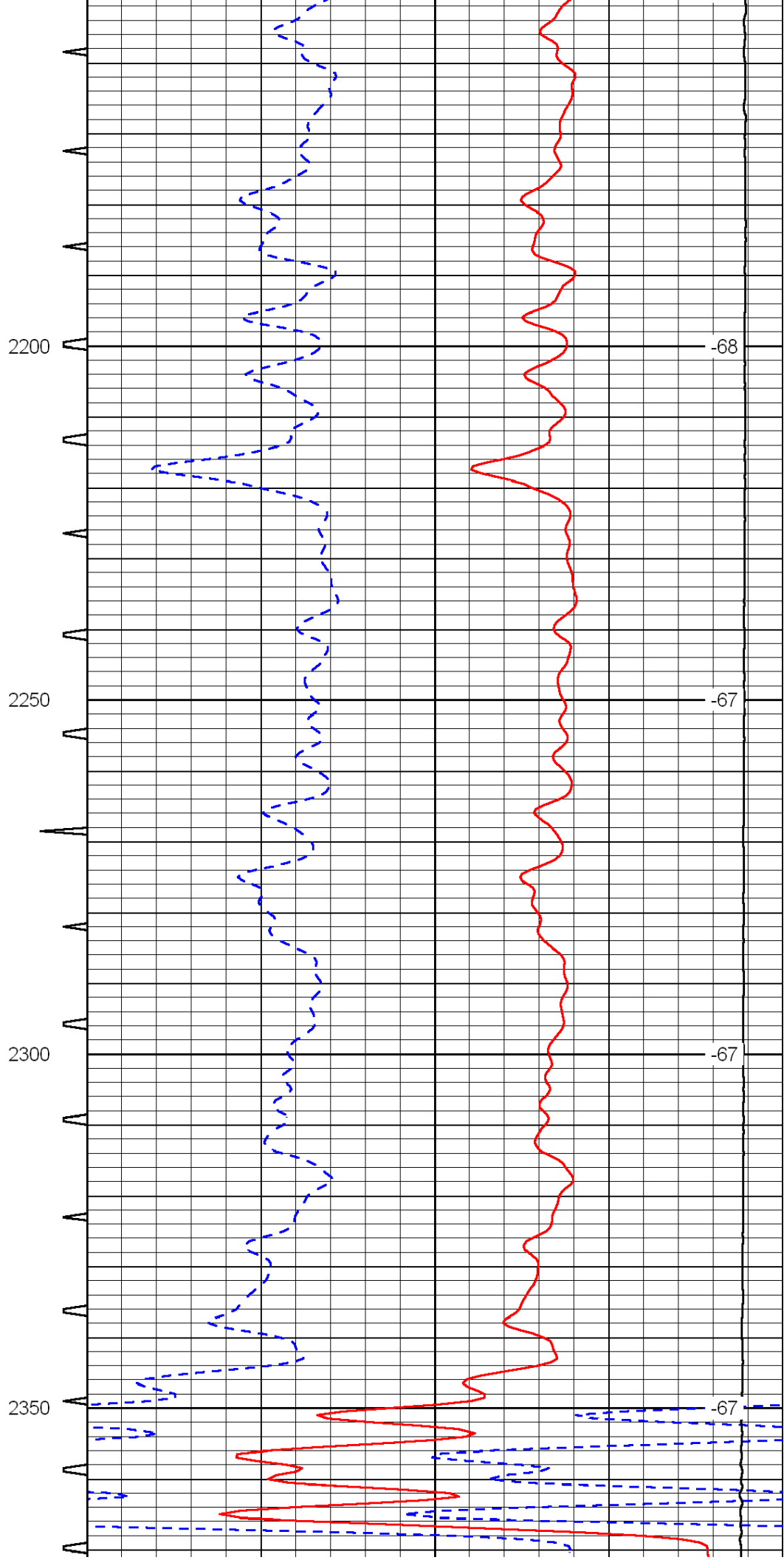
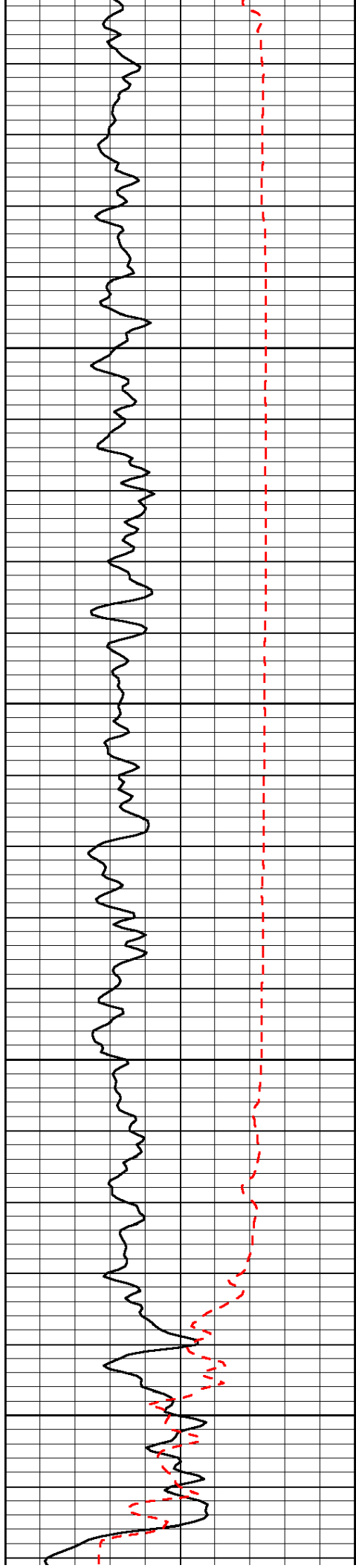


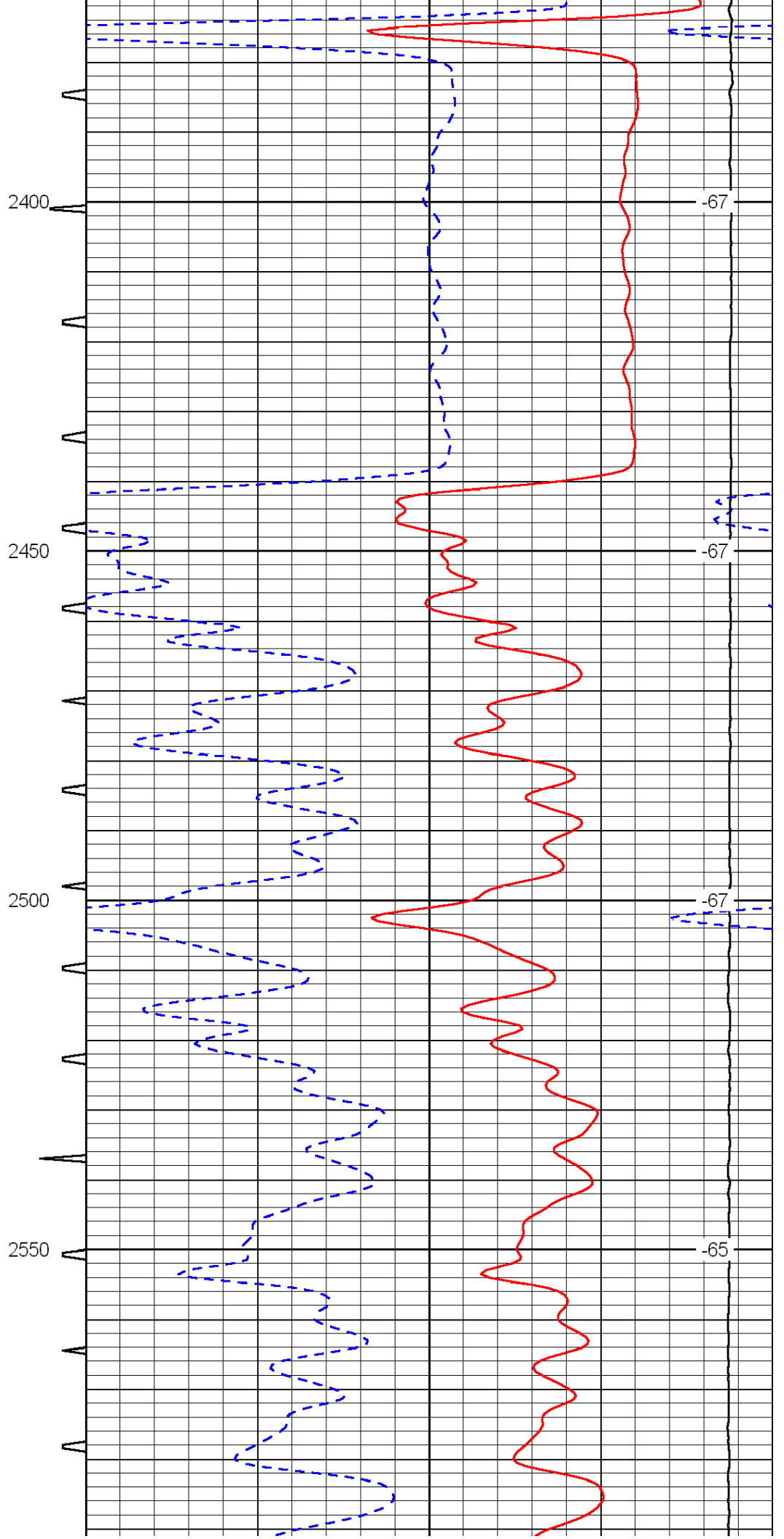
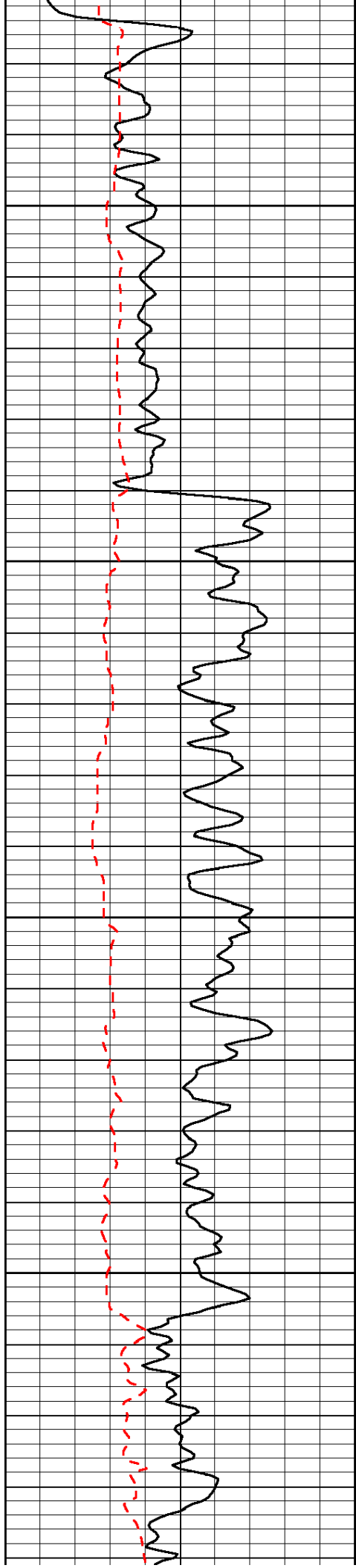


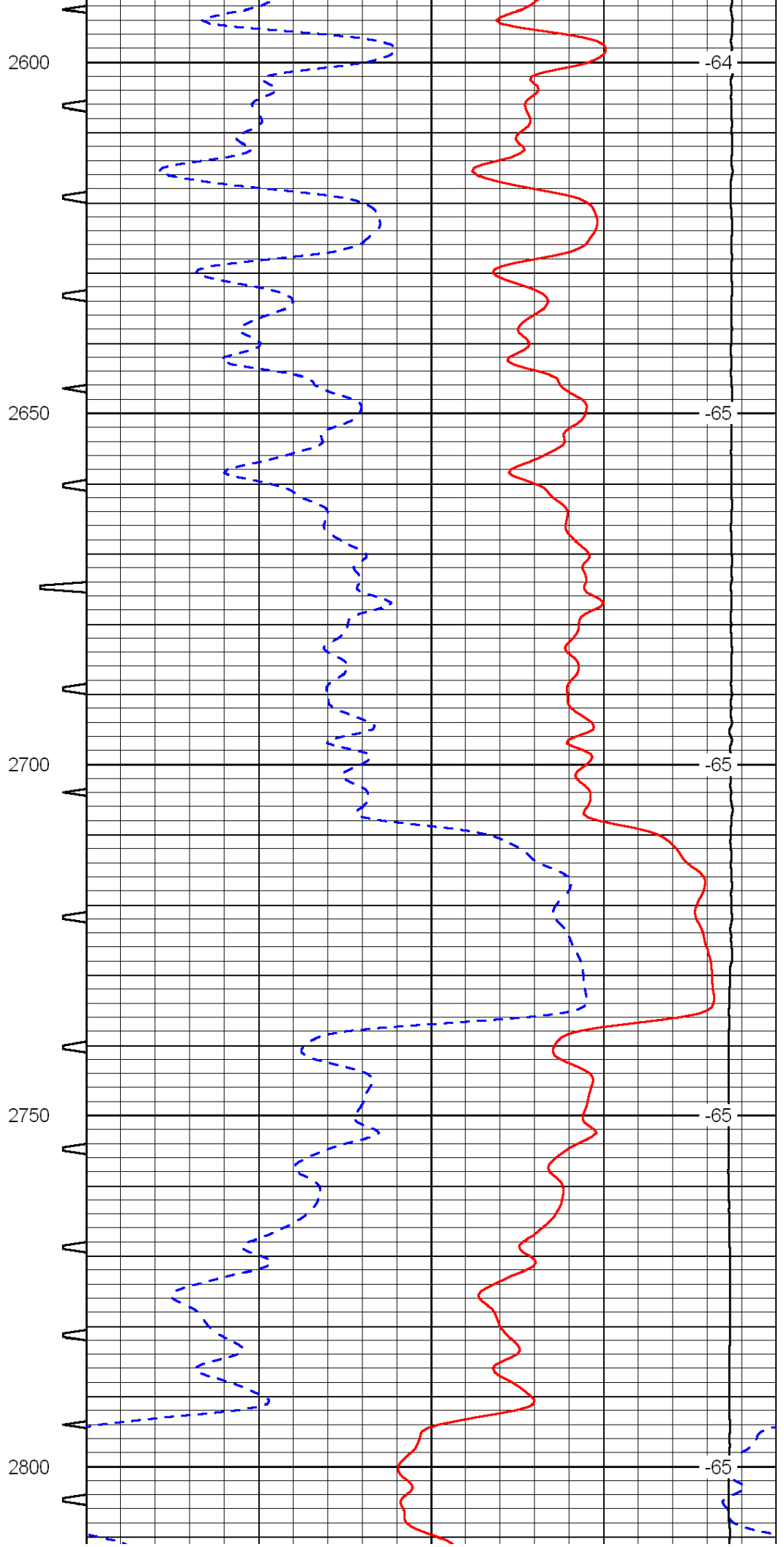
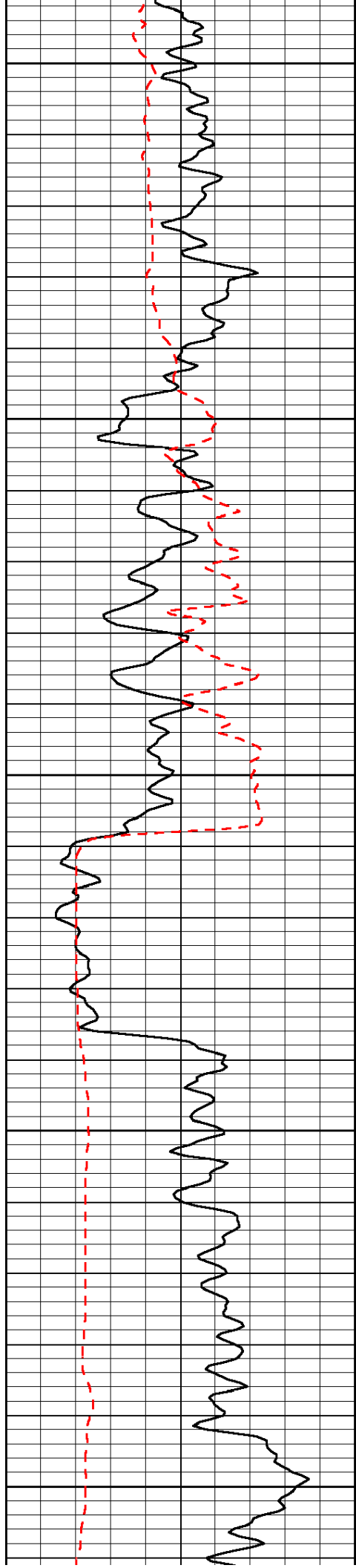


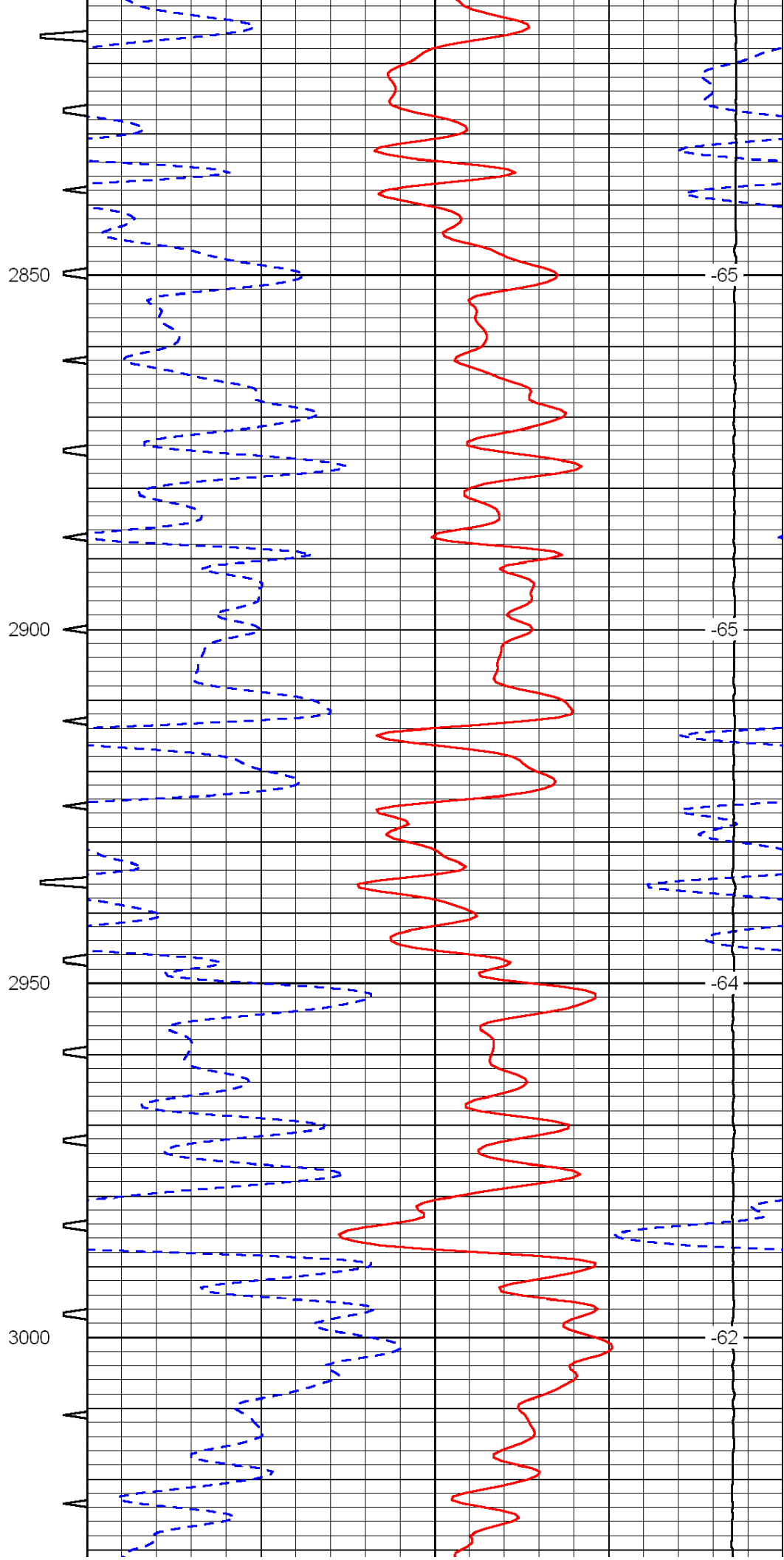
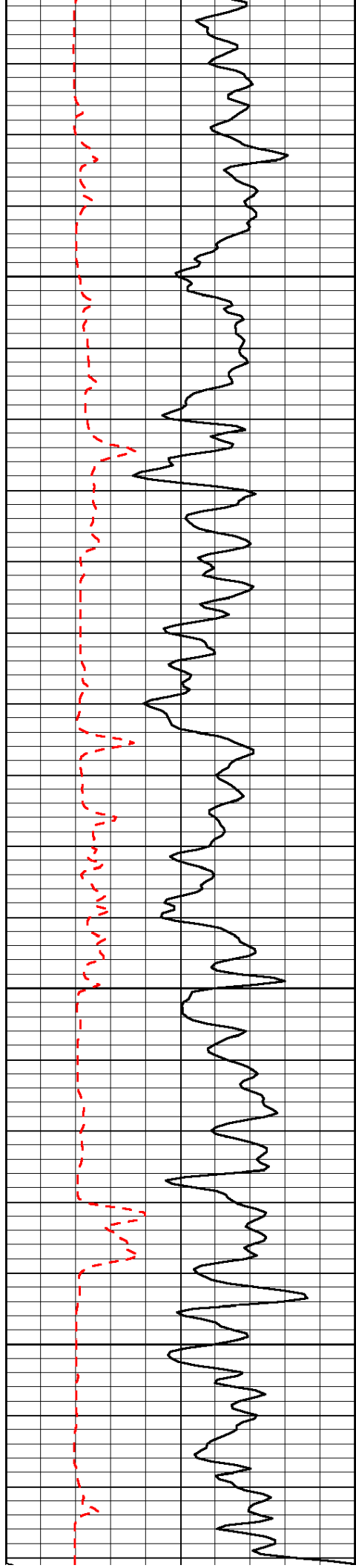


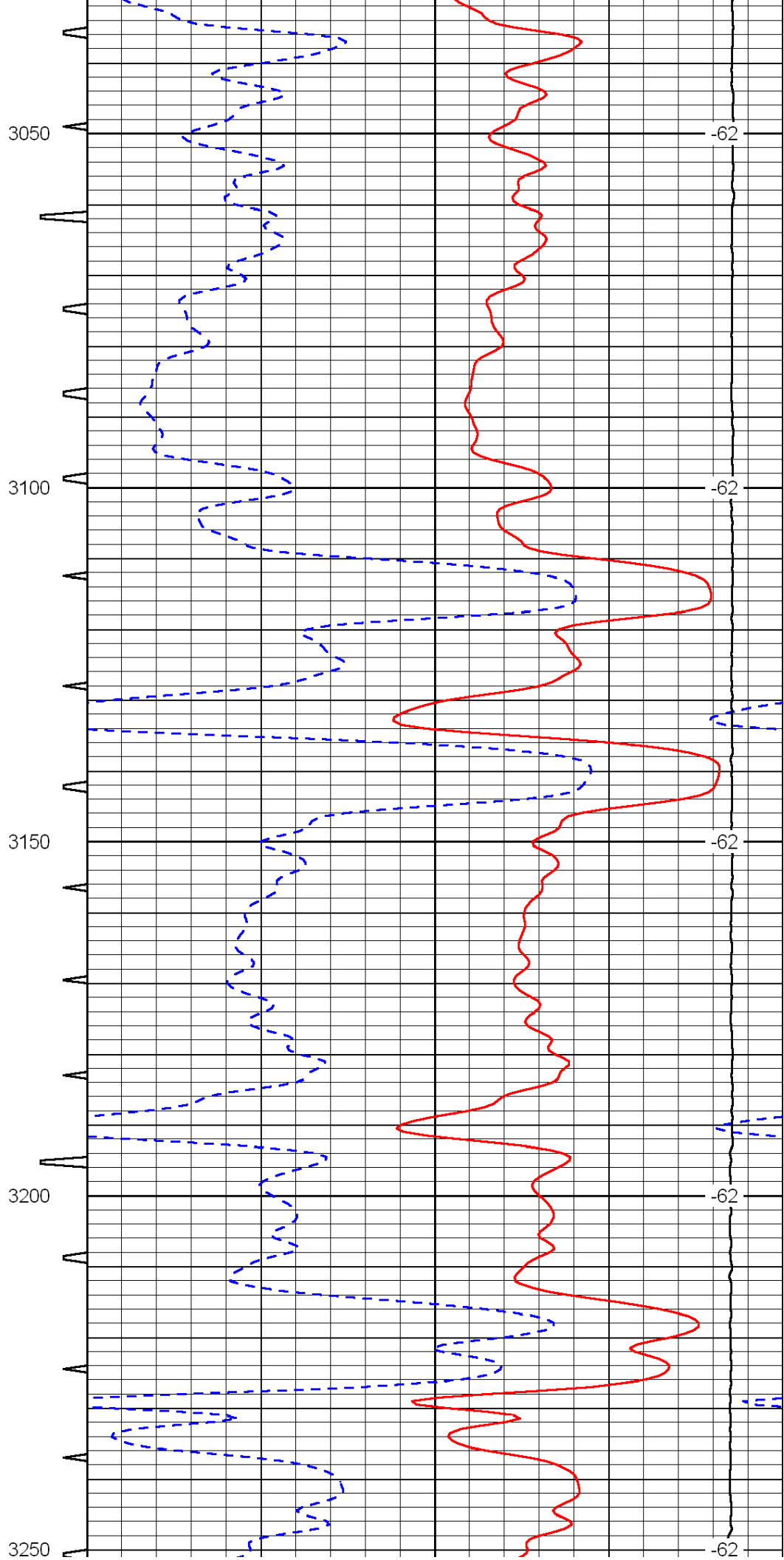
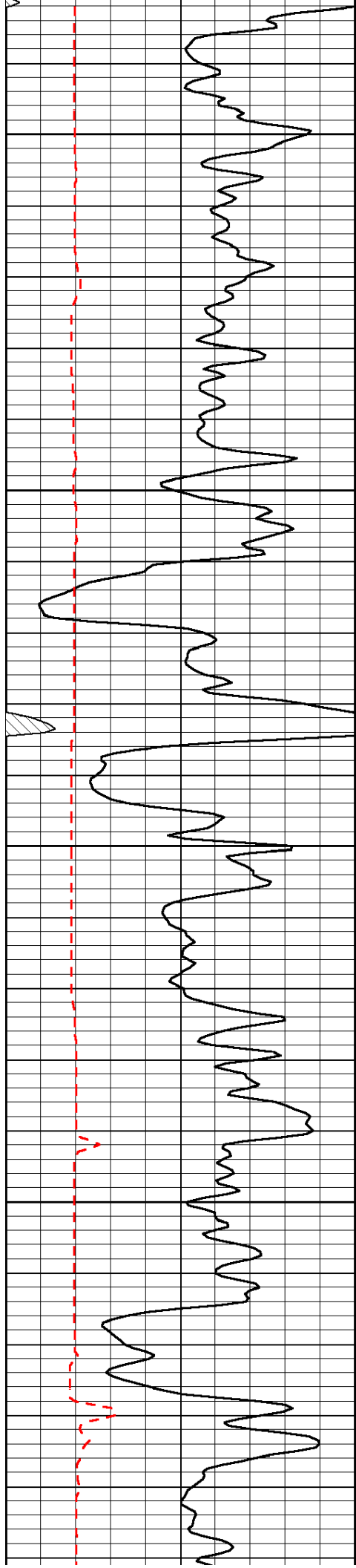


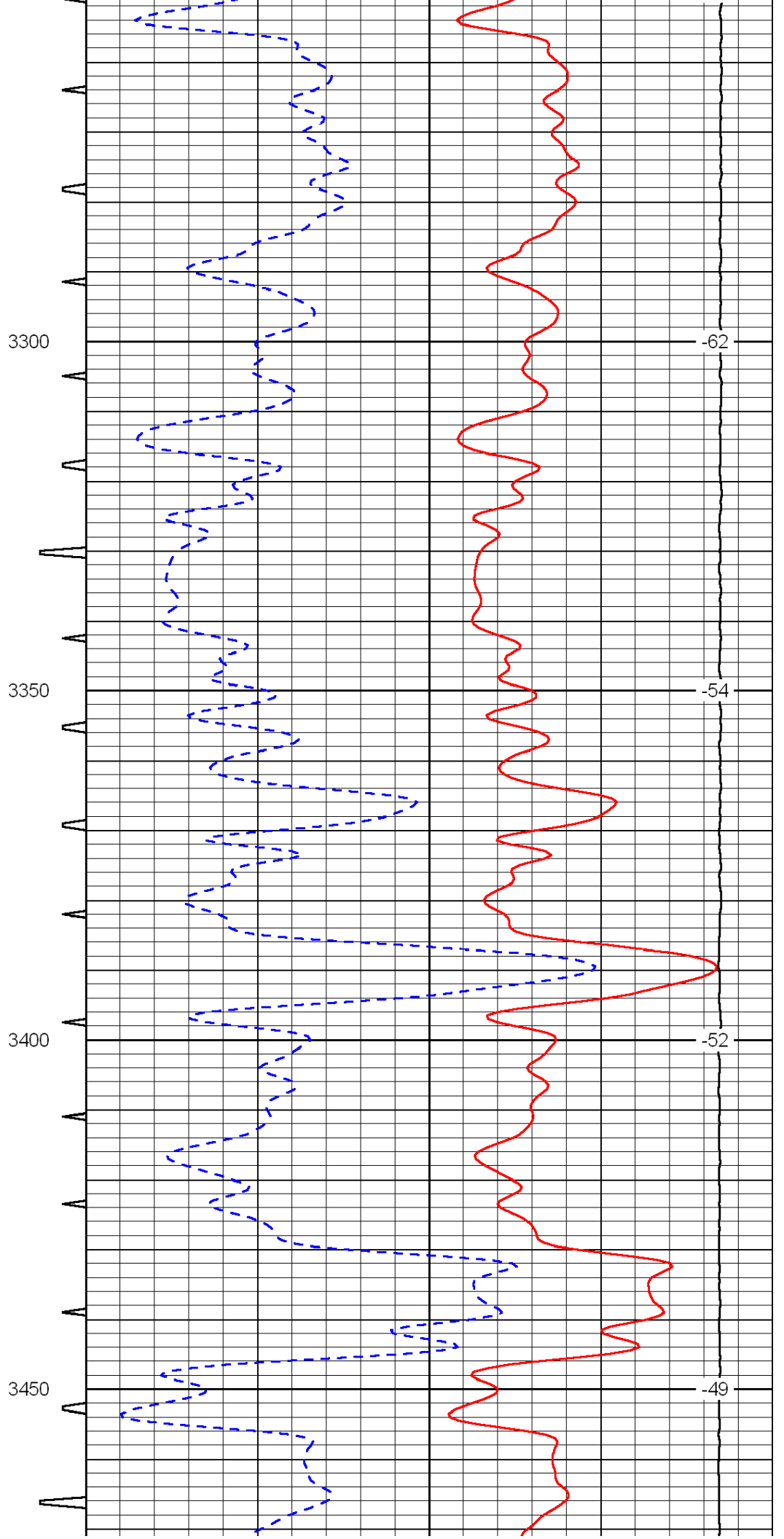
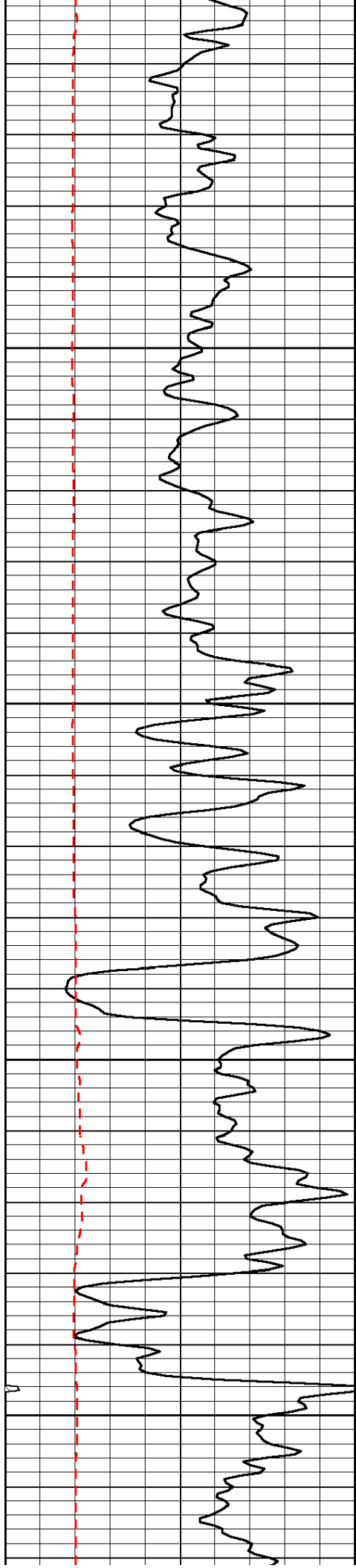


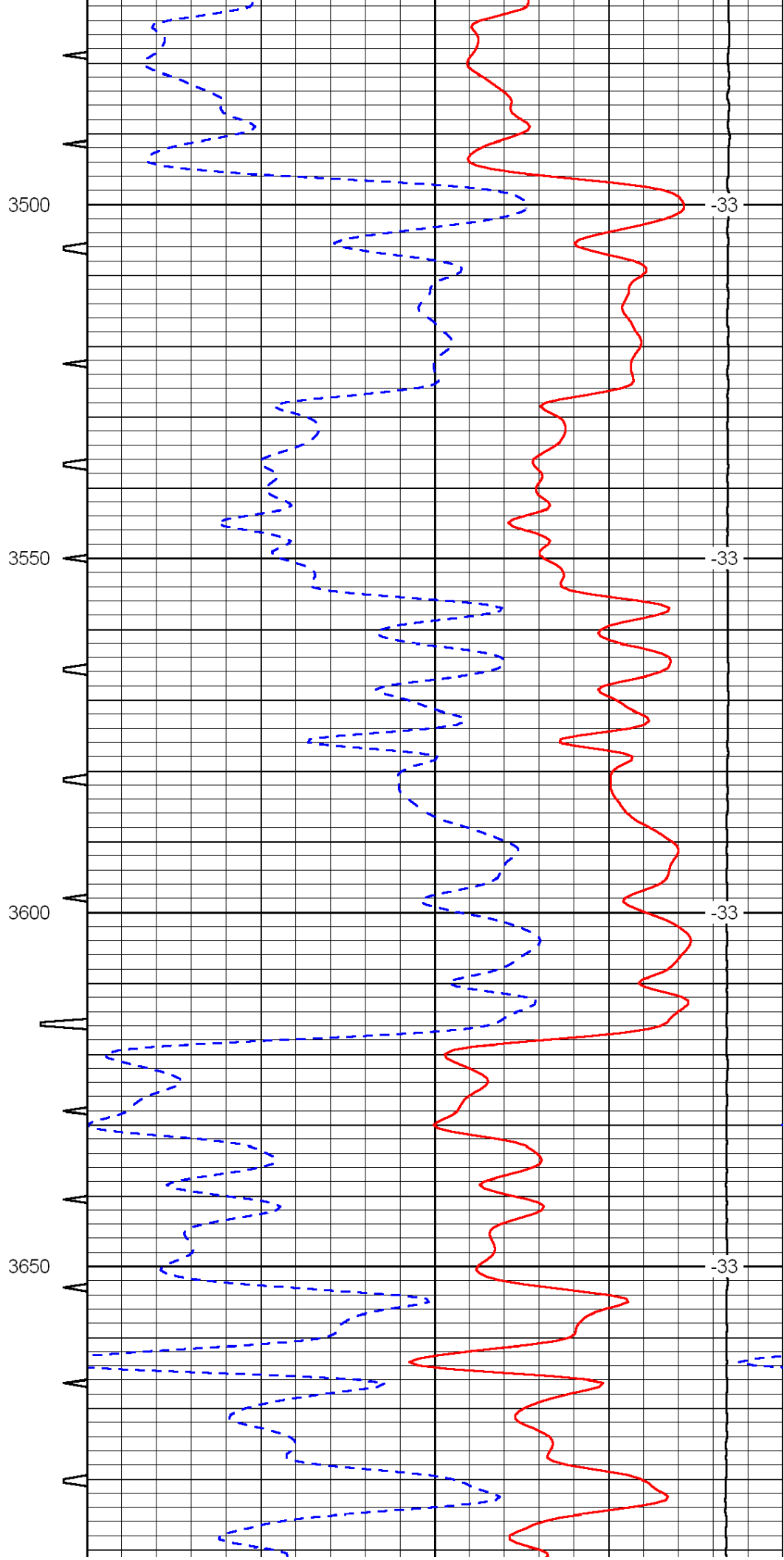
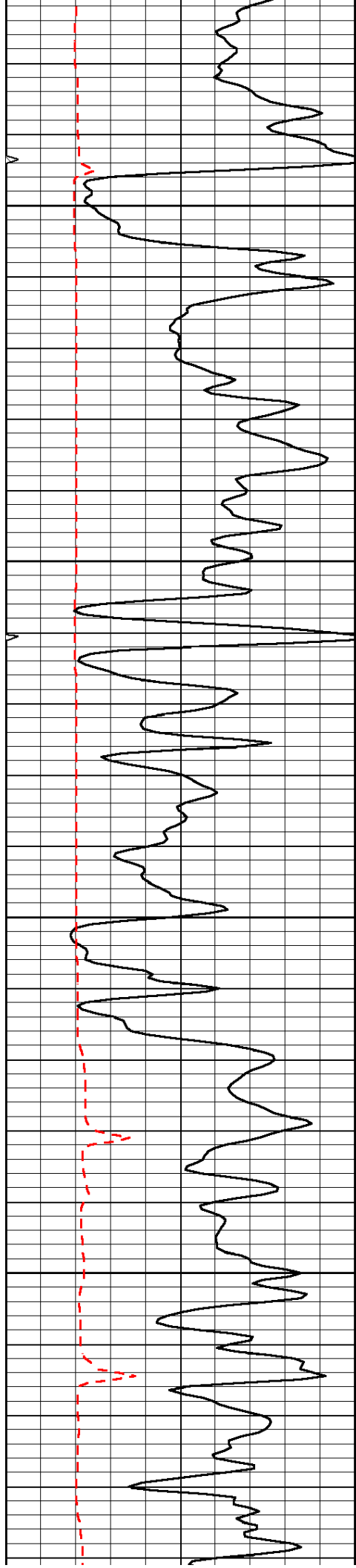


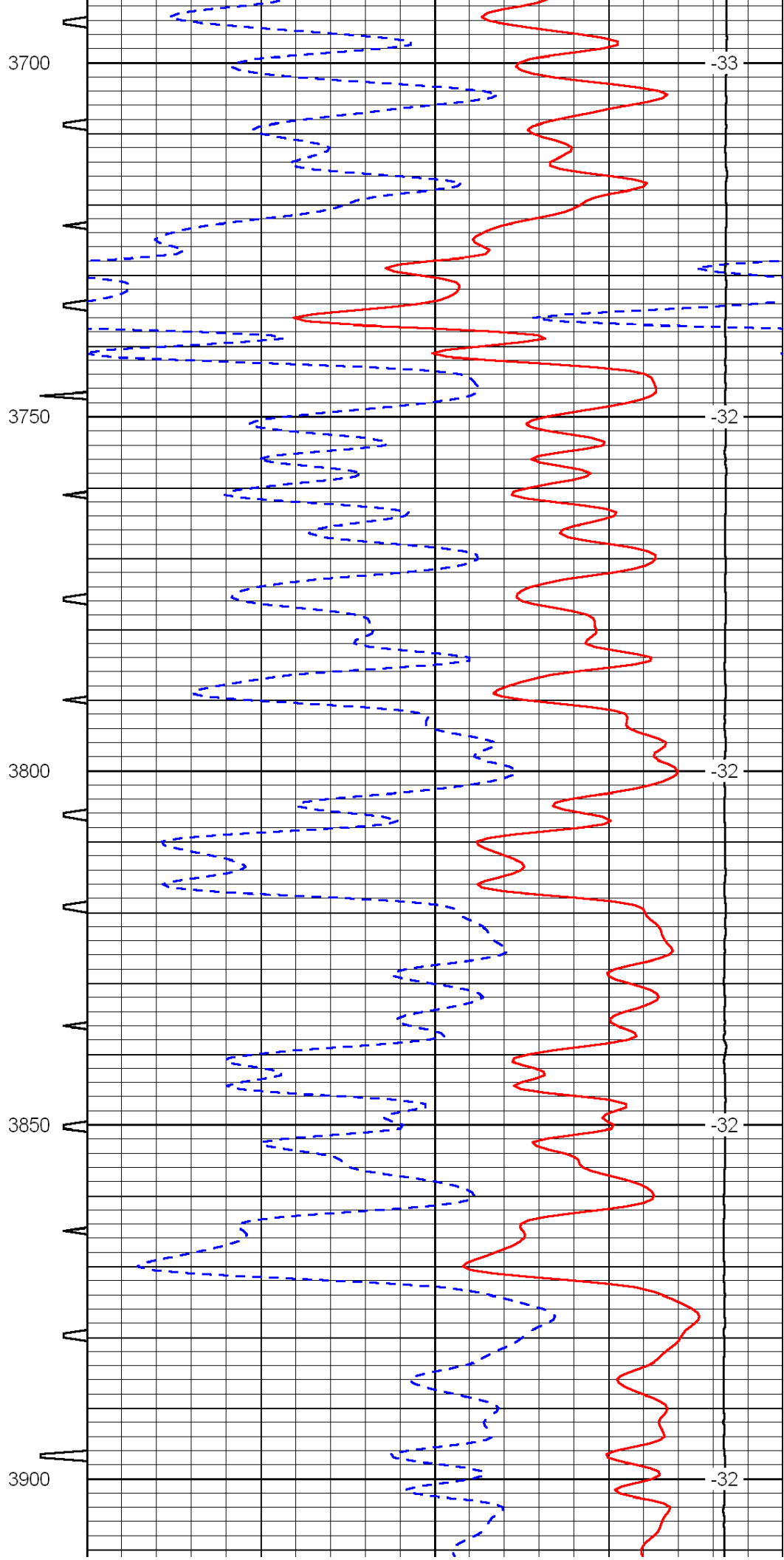
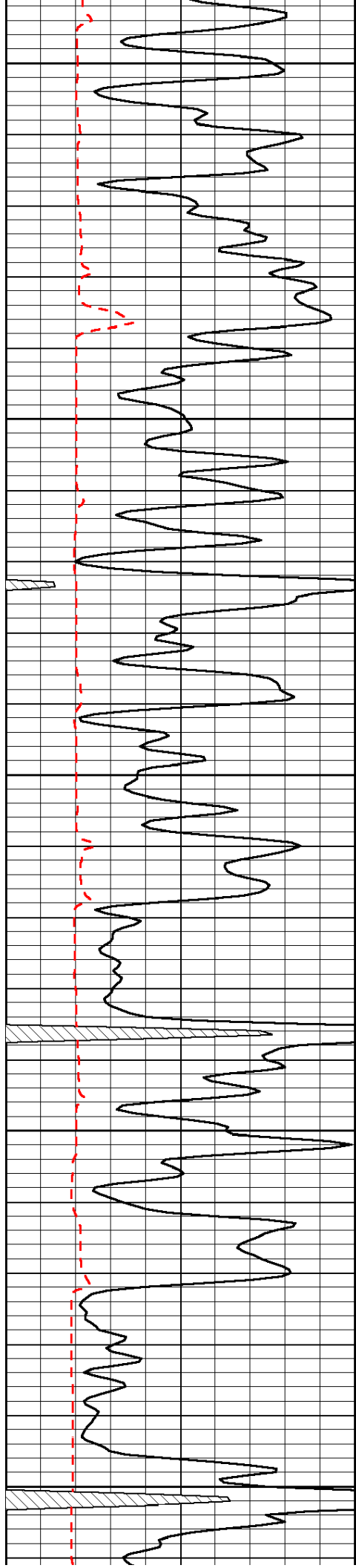


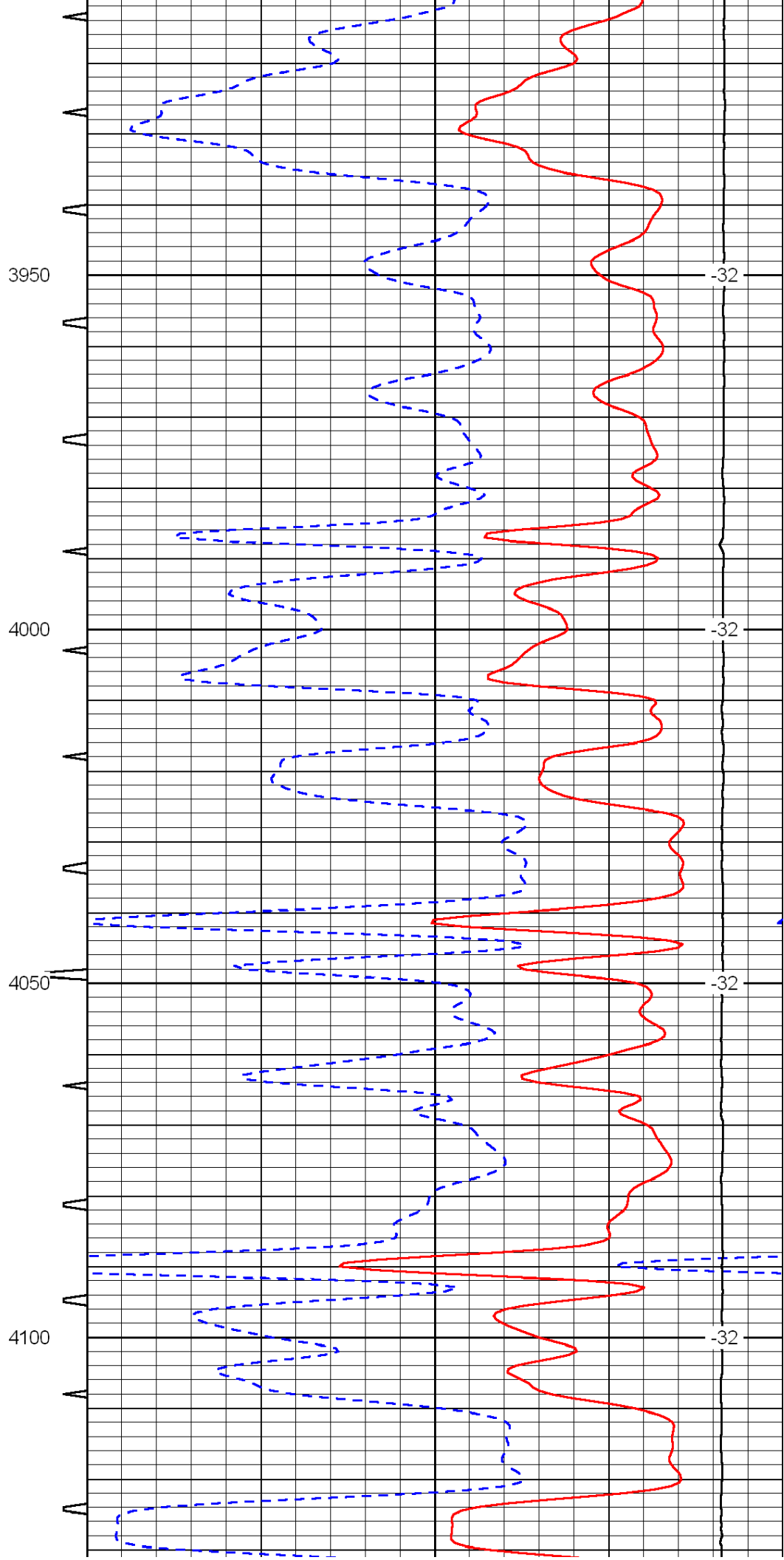
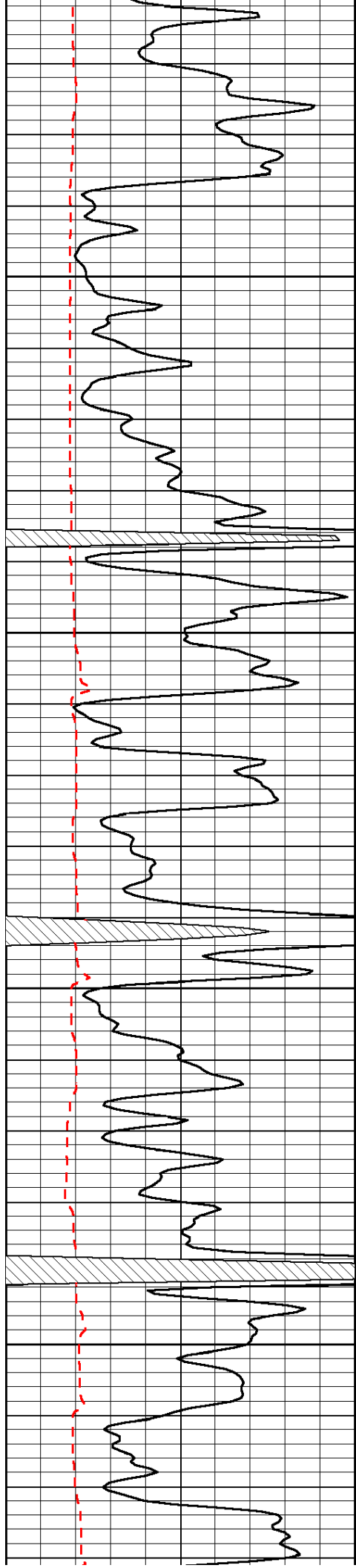


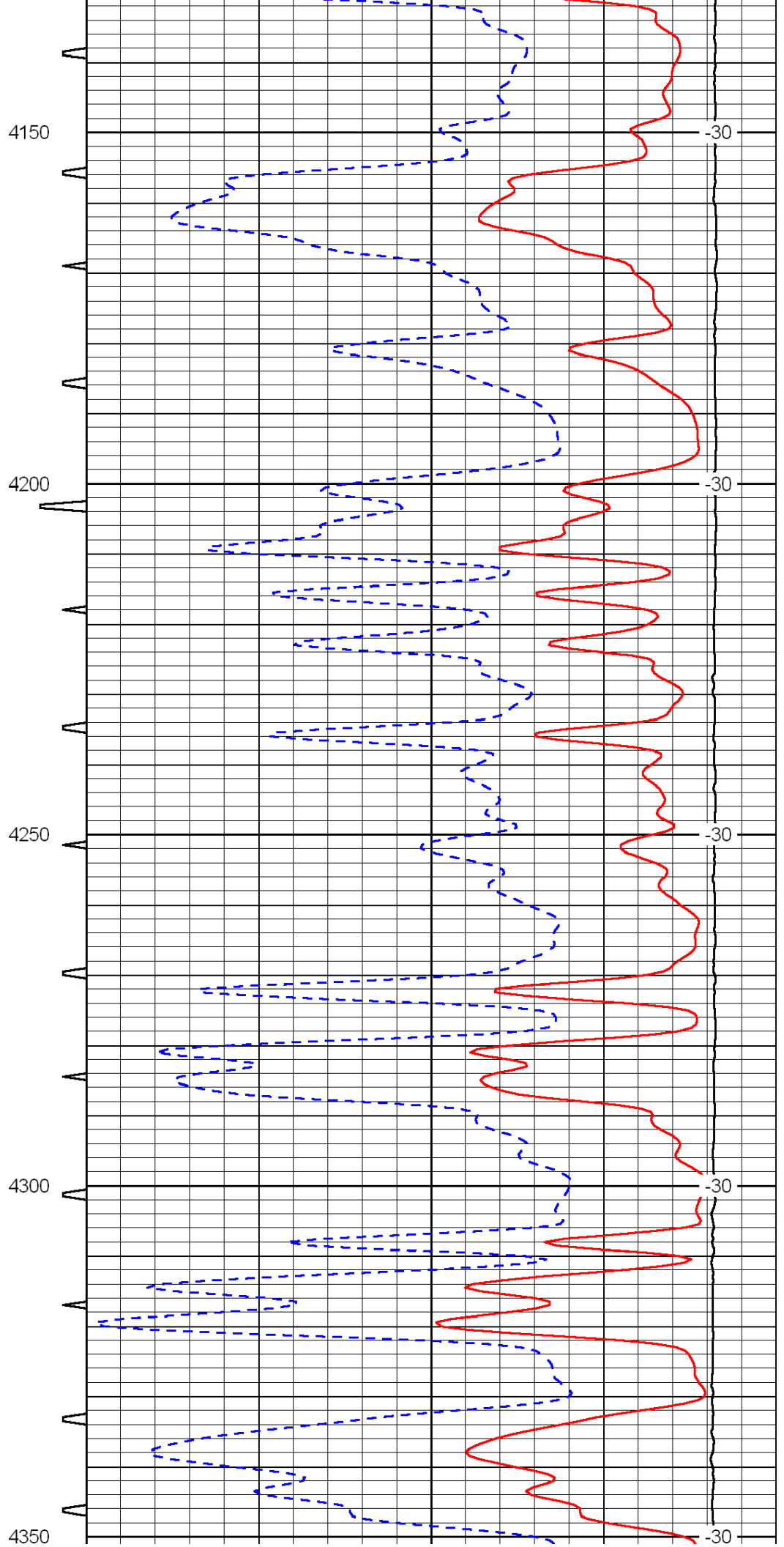
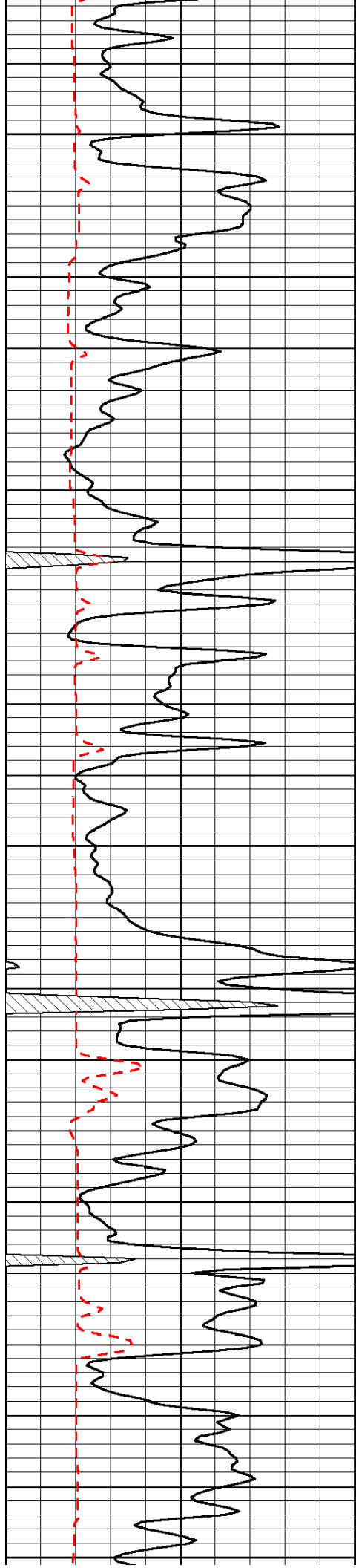


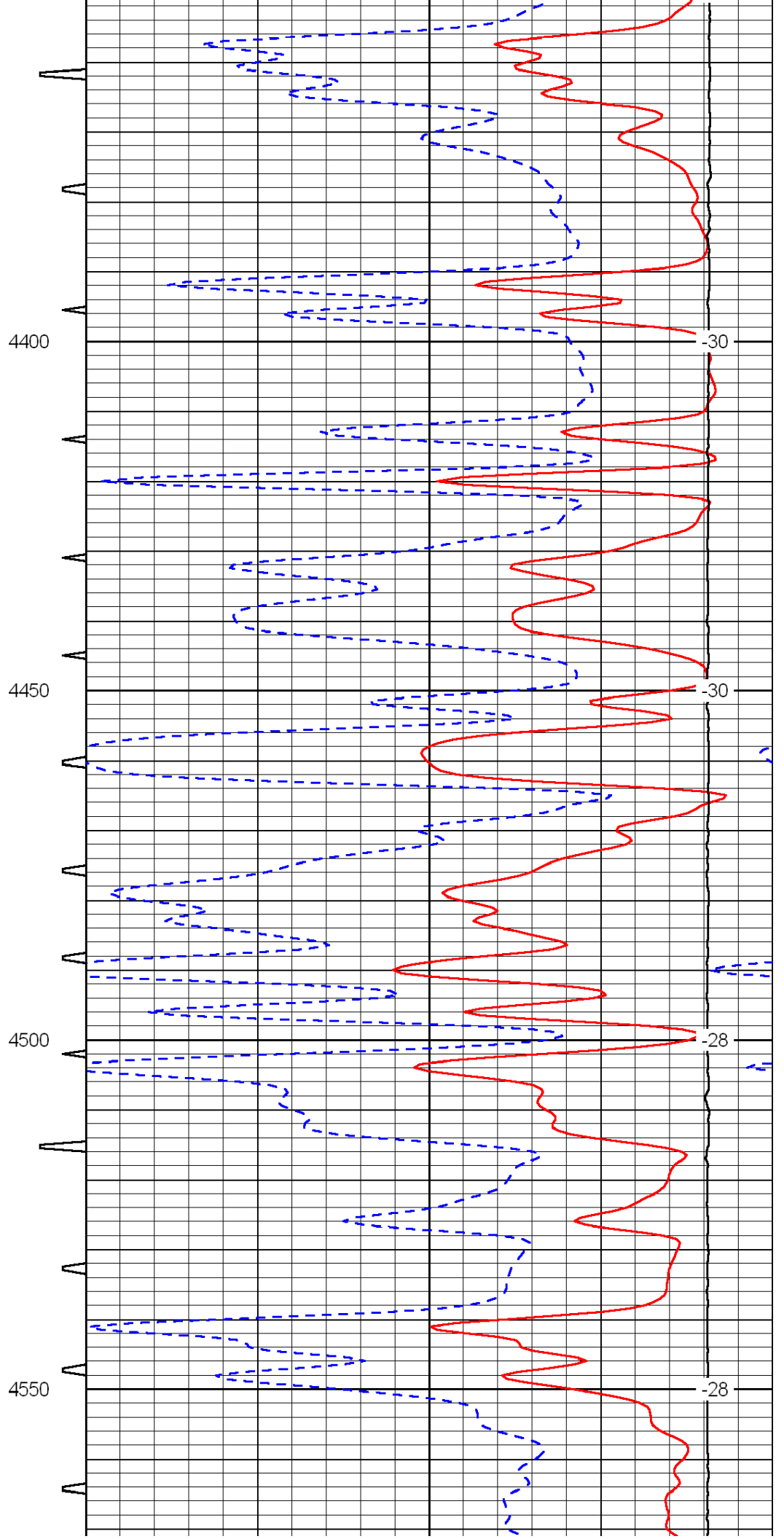
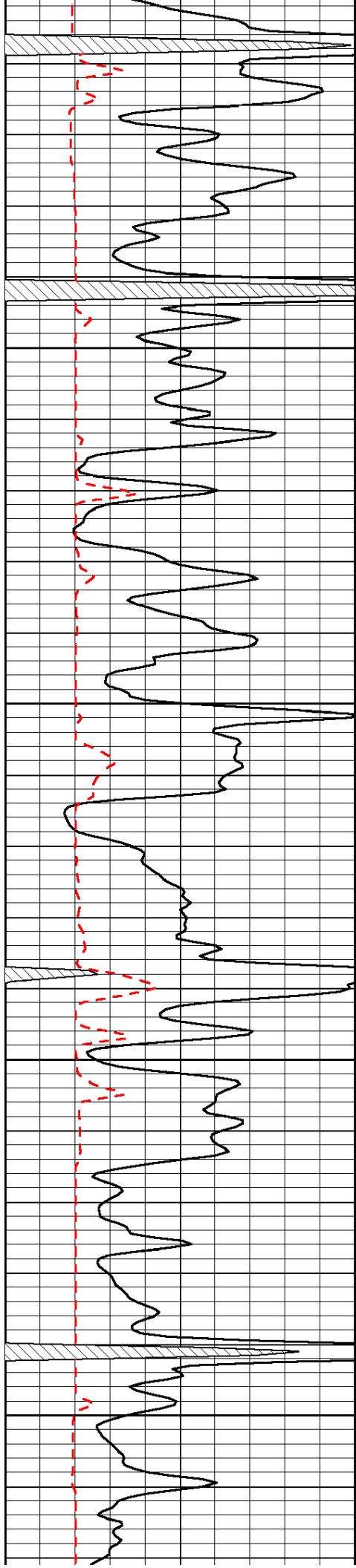


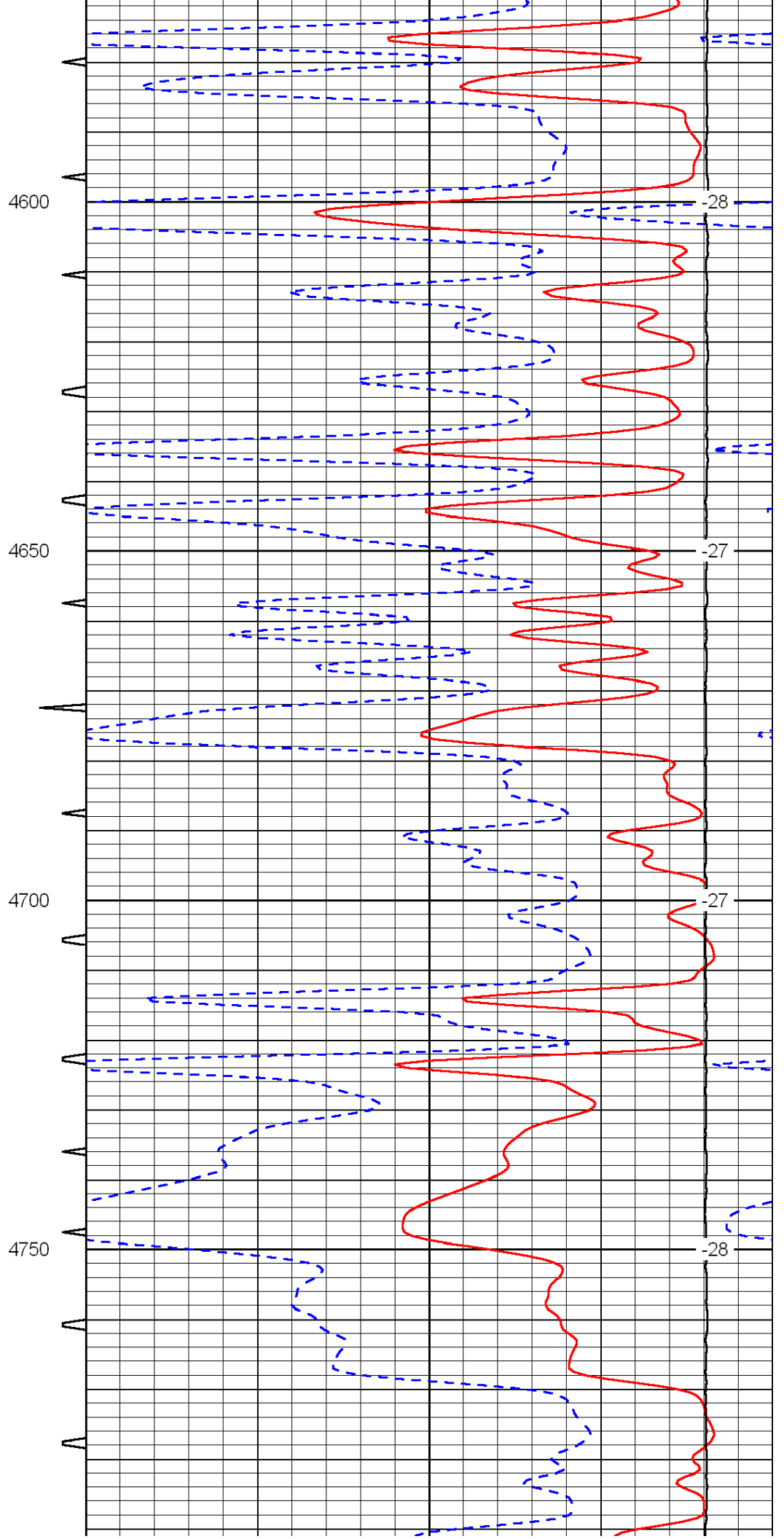
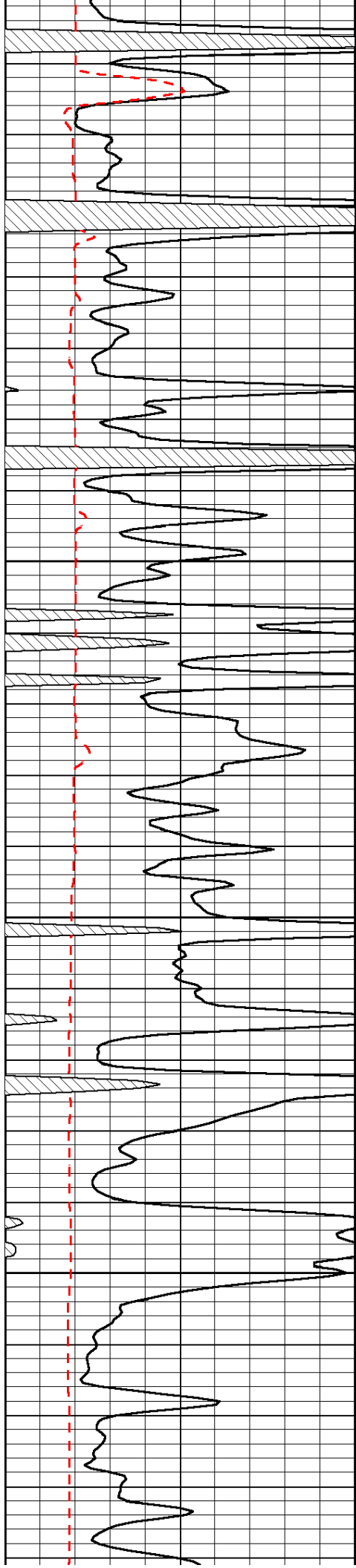


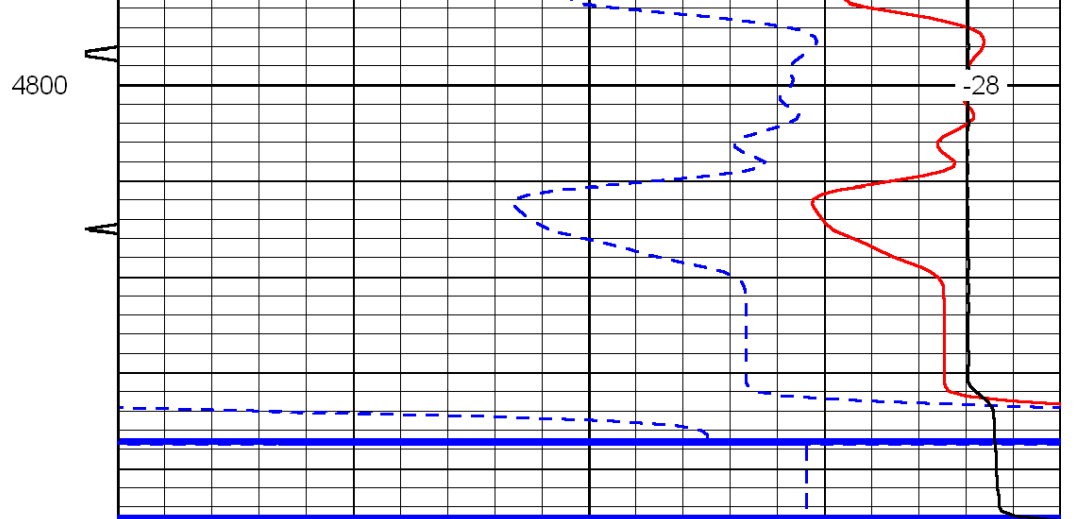
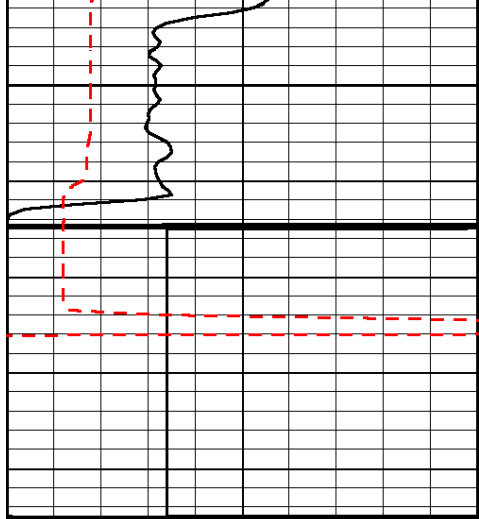












0	Gamma Ray	150	Sonic Int	140	Delta Time (usec/ft)	40
150	Gamma Ray	300	5	0	SPOR	-10
6	Caliper (GAPI)	16		15000	LTEN (lb)	0

LSPD