



DIGITAL LOG (785) 625-3858

Dual Induction Log

15-009-25,670-00-00

API No.

Company Russell Oil, Inc.

Well Conner No. 12

Field Carroll

County Barton

State

Kansas

Location 1460' FNL & 1225' FEL

Sec: 21 Twp: 17 S Rge: 14 W

Permanent Datum Ground Level Elevation 1901

Log Measured From Kelly Bushing 9 Ft. Above Perm. Datum

Drilling Measured From Kelly Bushing

Other Services
CNL/CDL
MEL
Elevation
K.B. 1910
D.F.
G.L. 1901

Date 3/21/2012

Run Number One

Depth Driller 3440

Depth Logger 3443

Bottom Logged Interval 3442

Top Log Interval 800

Casing Driller 8.625 @ 873

Casing Logger 863

Bit Size 7.875

Type Fluid in Hole Chemical

Salinity, ppm CL 5300

Density / Viscosity 9.1 51

pH / Fluid Loss 10.5 8.8

Source of Sample Flowline

Rm @ Meas. Temp .75 @ 70

Rmf @ Meas. Temp .56 @ 70

Rmc @ Meas. Temp 1.01 @ 70

Source of Rmf / Rmc Charts

Rm @ BHT .47 @ 112

Operating Rig Time 3 1/2 Hours

Max Rec. Temp. F 112

Equipment Number 91

Location Hays

Recorded By D.Kerr

Witnessed By Kitt Noah

<<< Fold Here >>>

All interpretations are opinions based on inferences from electrical or other measurements and we cannot and do not guarantee the accuracy or correctness of any interpretation, and we shall not, except in the case of gross or willful negligence on our part, be liable or responsible for any loss, costs, damages, or expenses incurred or sustained by anyone resulting from any interpretation made by any of our officers, agents or employees. These interpretations are also subject to our general terms and conditions set out in our current Price Schedule.

Comments

Thank you for using Log-Tech, Inc.
(785) 625-3858

Russell KS,
South to HWY 281 and HWY 4,
1 West, 1 1/2 North, West Into

Database File: c:\warrior\data\russell_conner no. 12\russell_conner_12hd.db
Dataset Pathname: DIL\rslstk
Presentation Format: dil2in
Dataset Creation: Wed Mar 21 04:24:26 2012
Charted by: Depth in Feet scaled 1:600

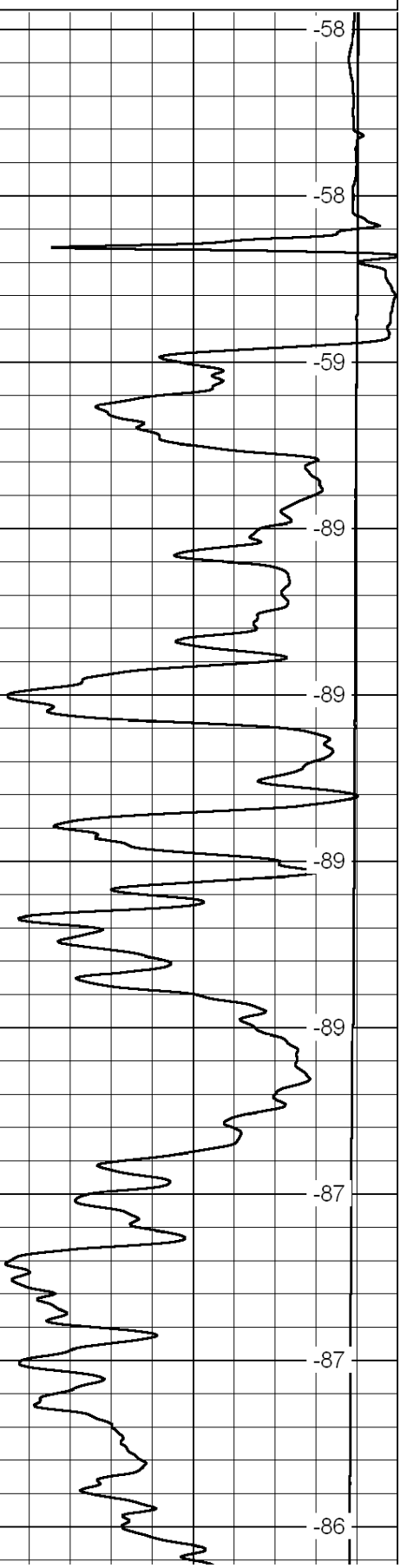
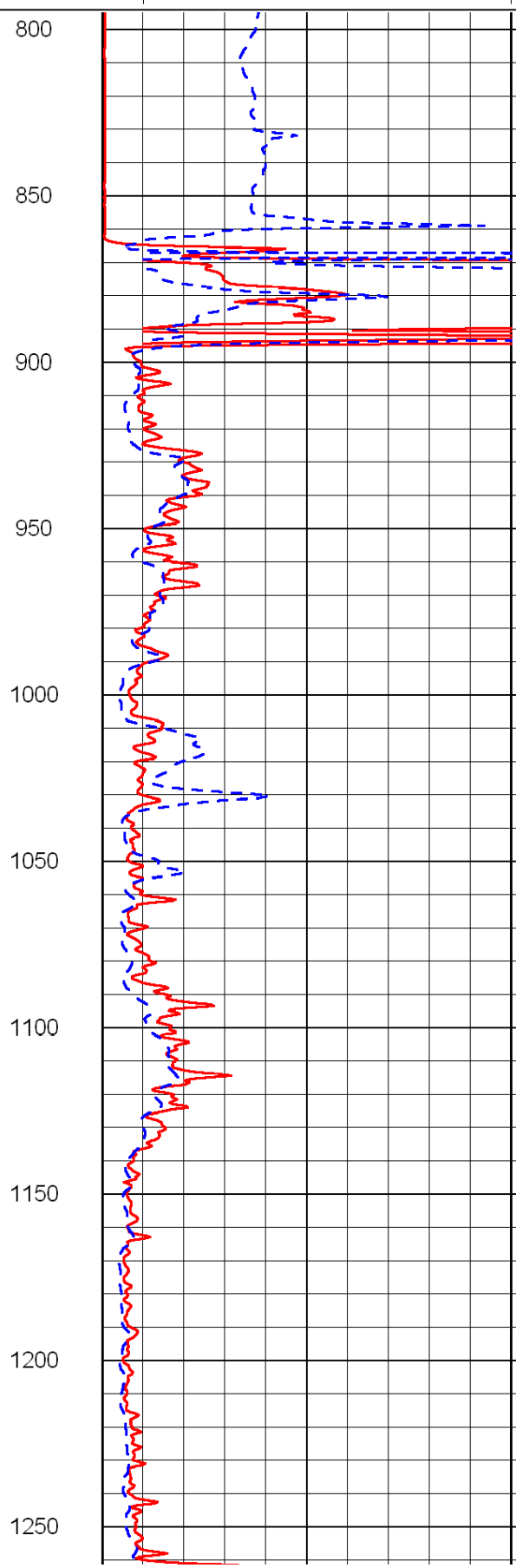
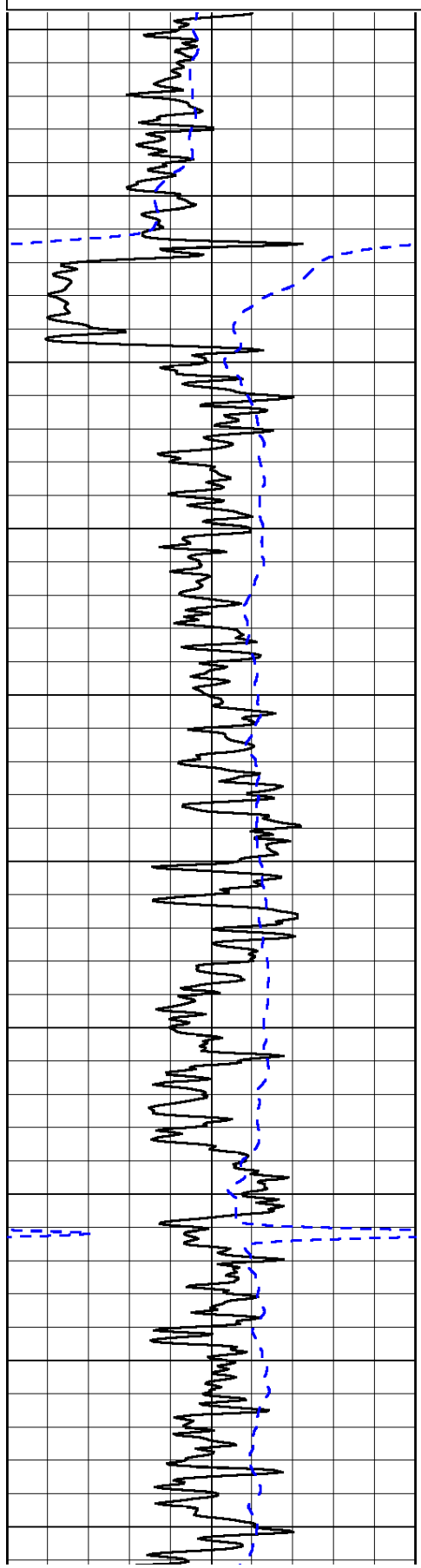
0	Gamma Ray	150
-200	SP (mV)	0

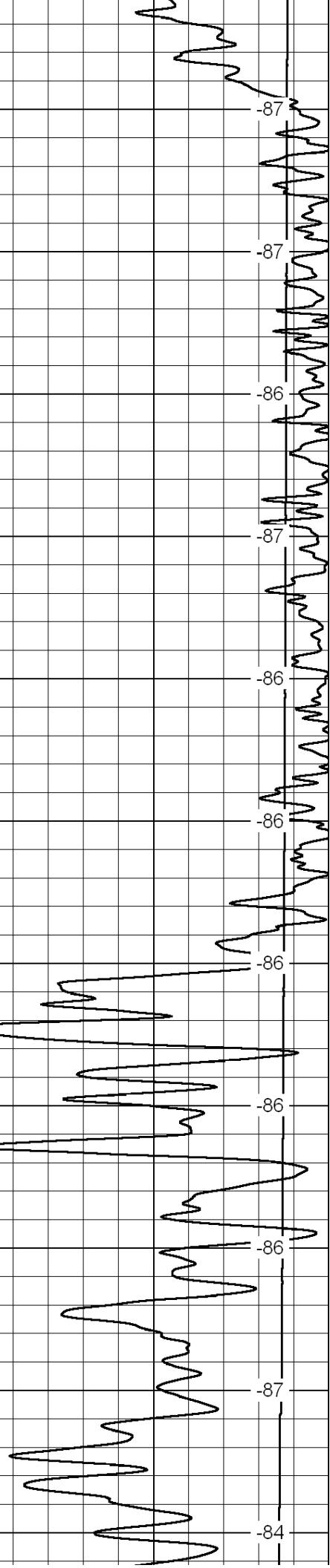
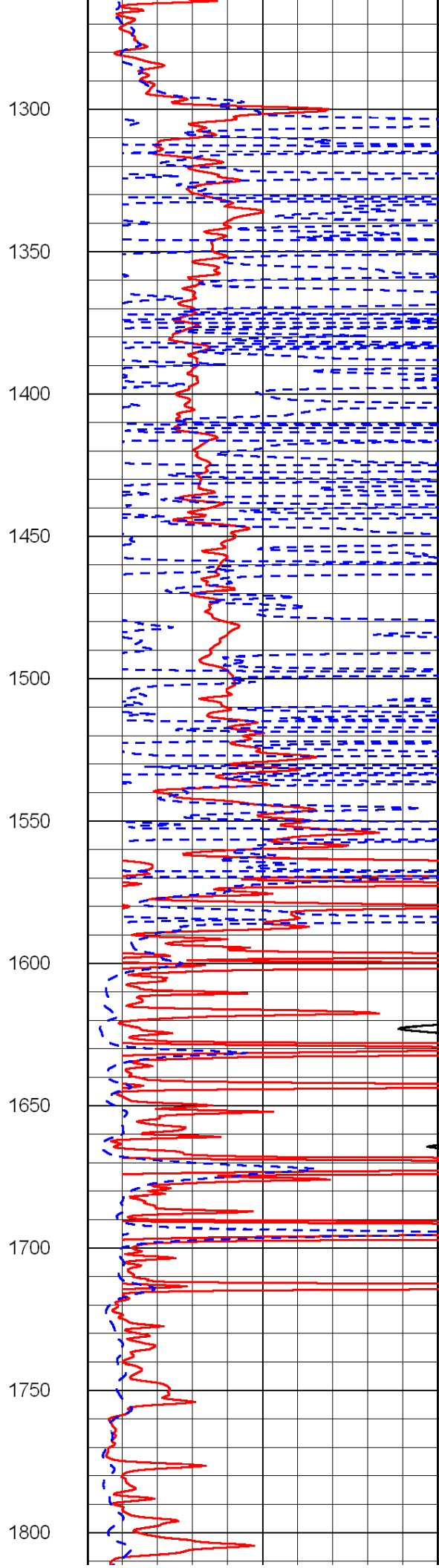
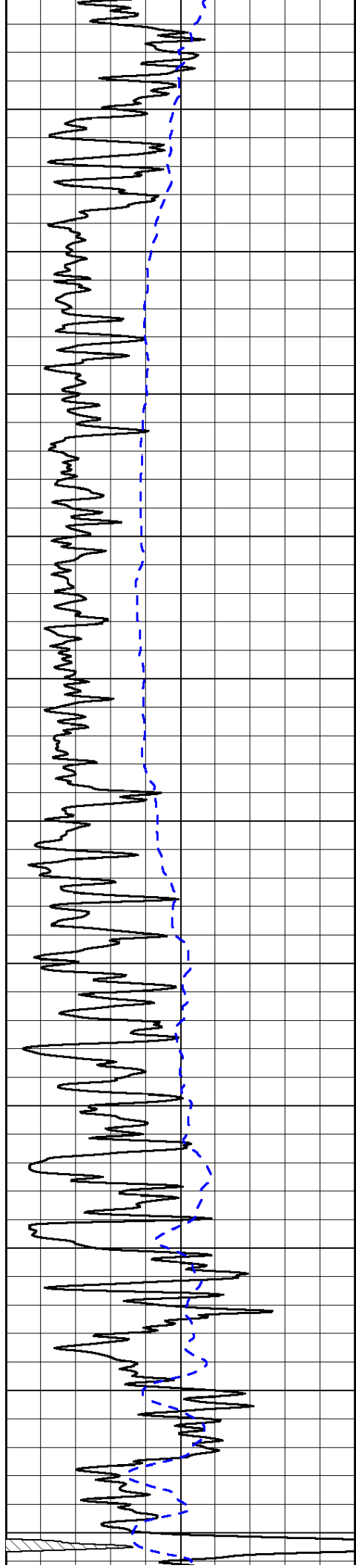
0	Shallow Resistivity	50
0	Deep Resistivity	50

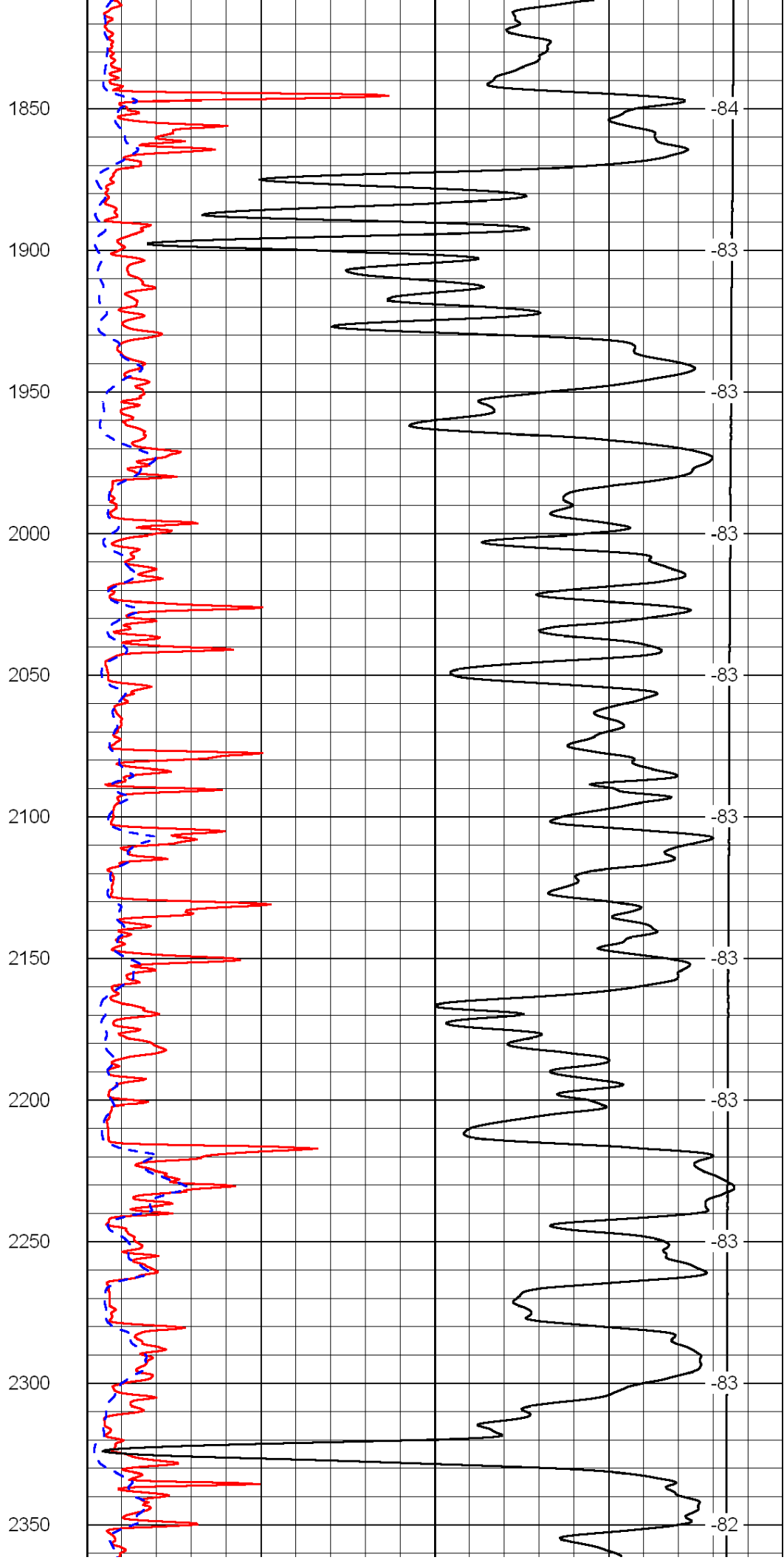
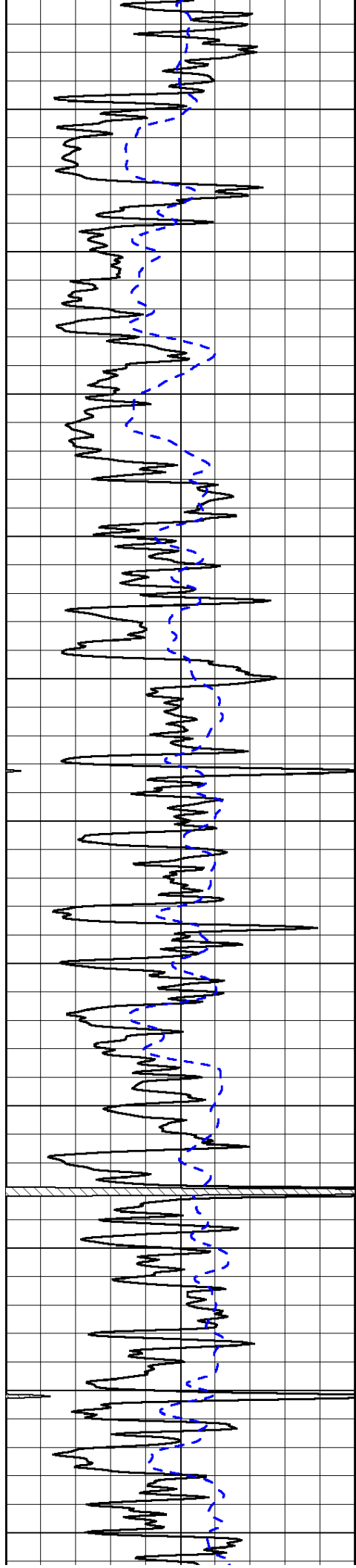
LSPD

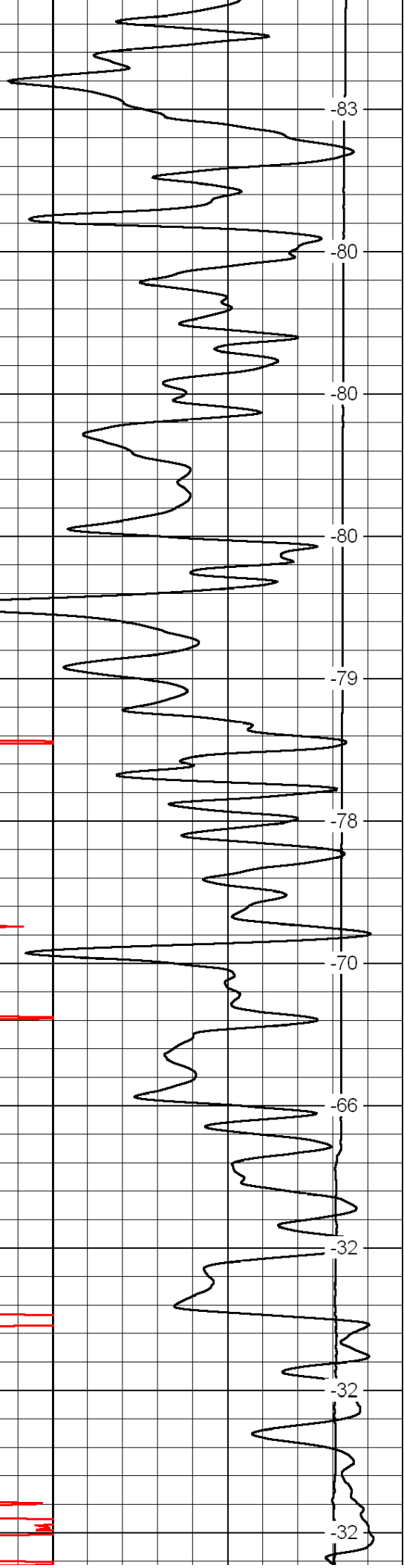
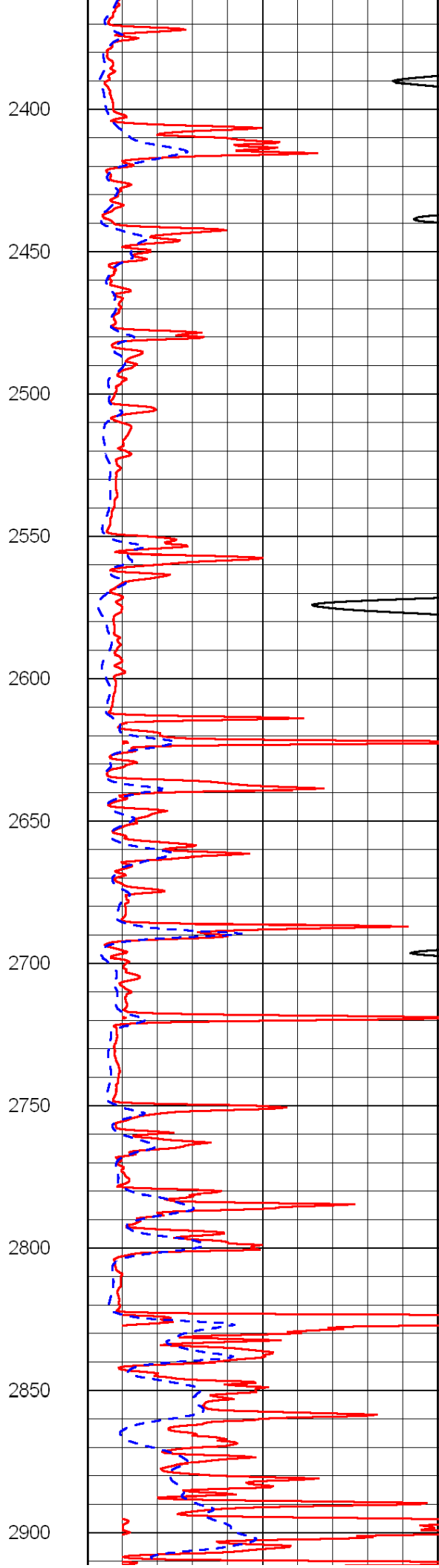
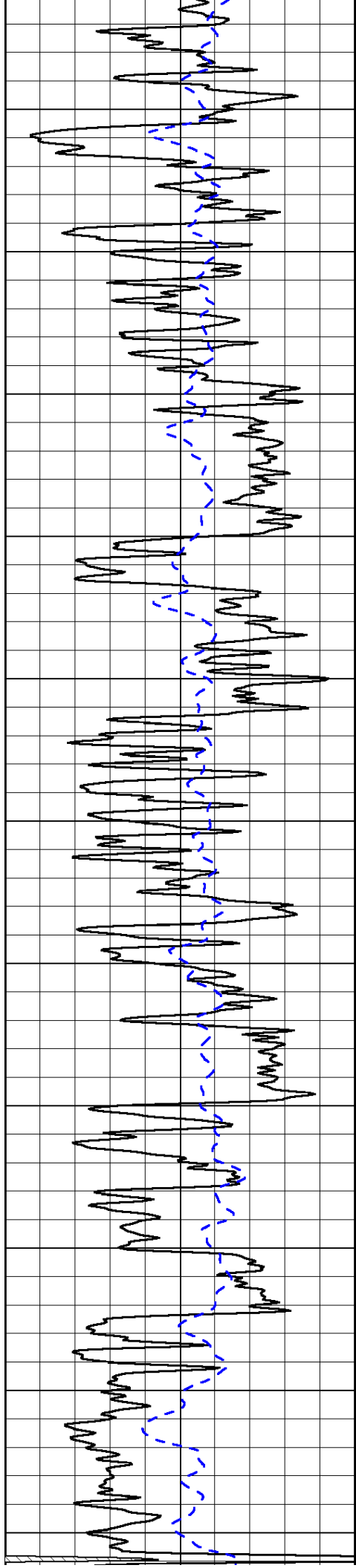
1000	Conductivity	0
15000	Line Tension	0

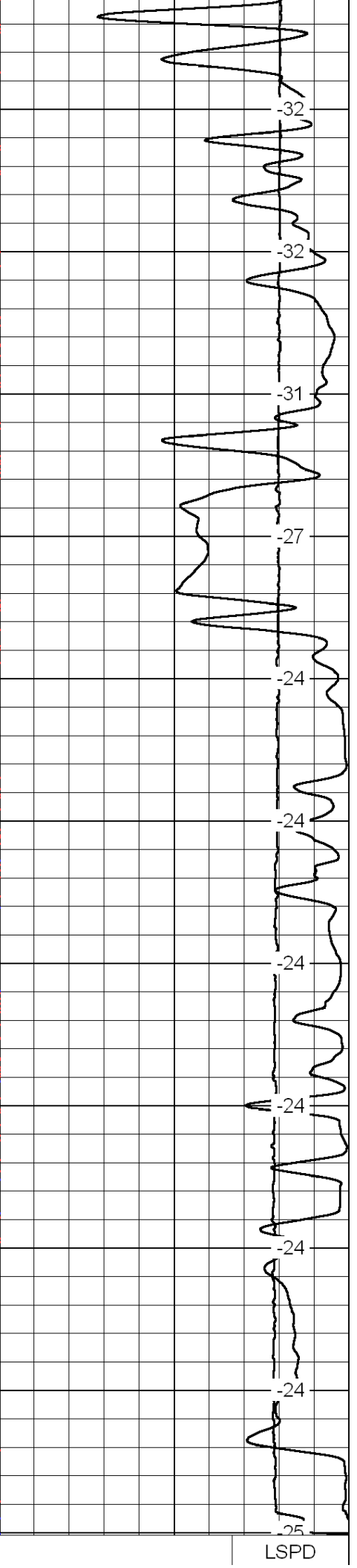
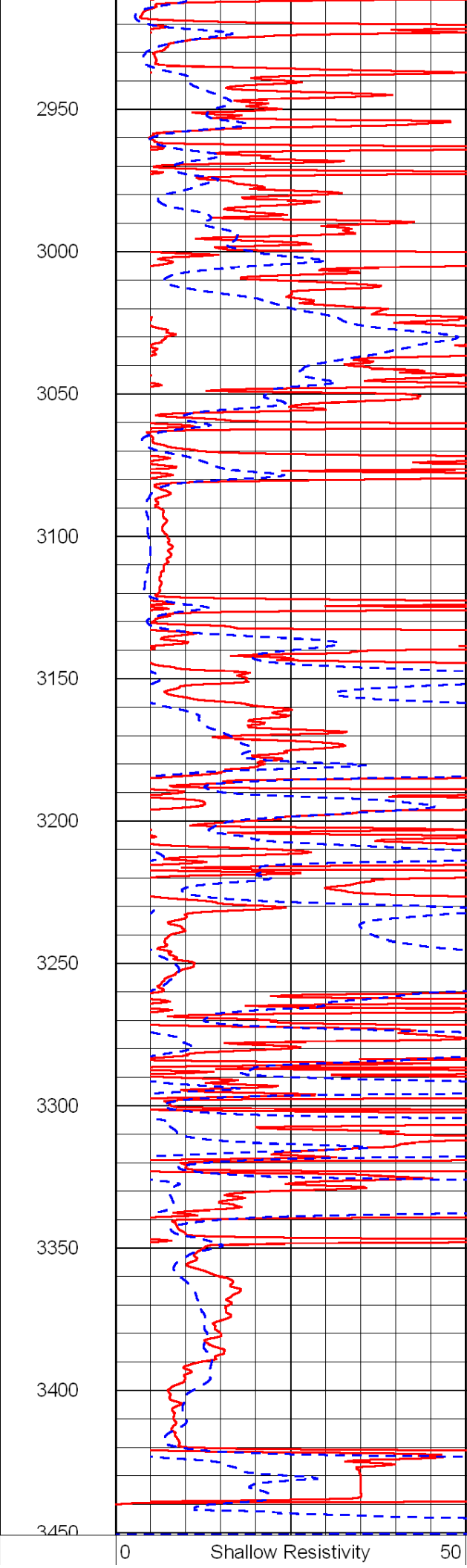
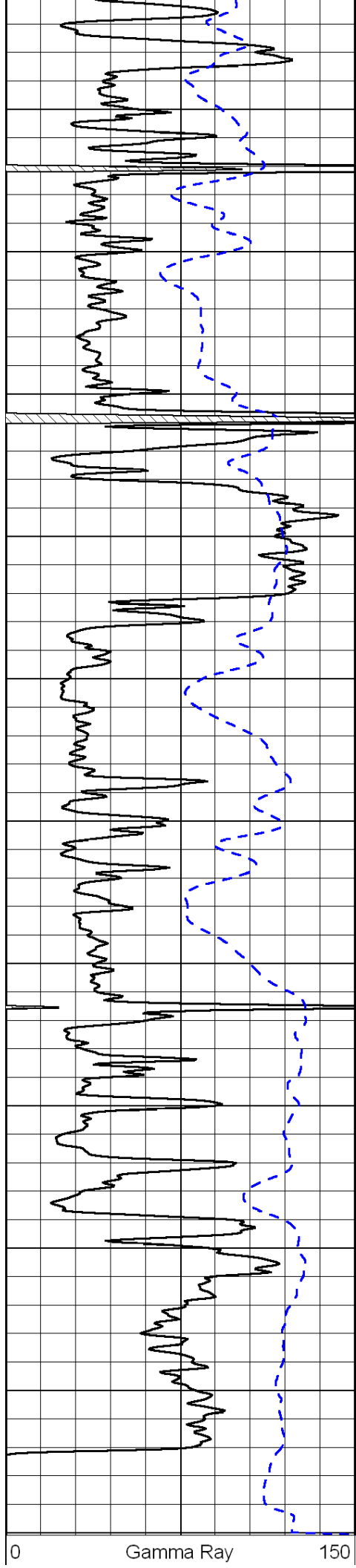
50	Shallow Resistivity	500
50	Deep Resistivity	500











-200	SP (mV)	0
<hr style="border-top: 1px dashed blue;"/>		

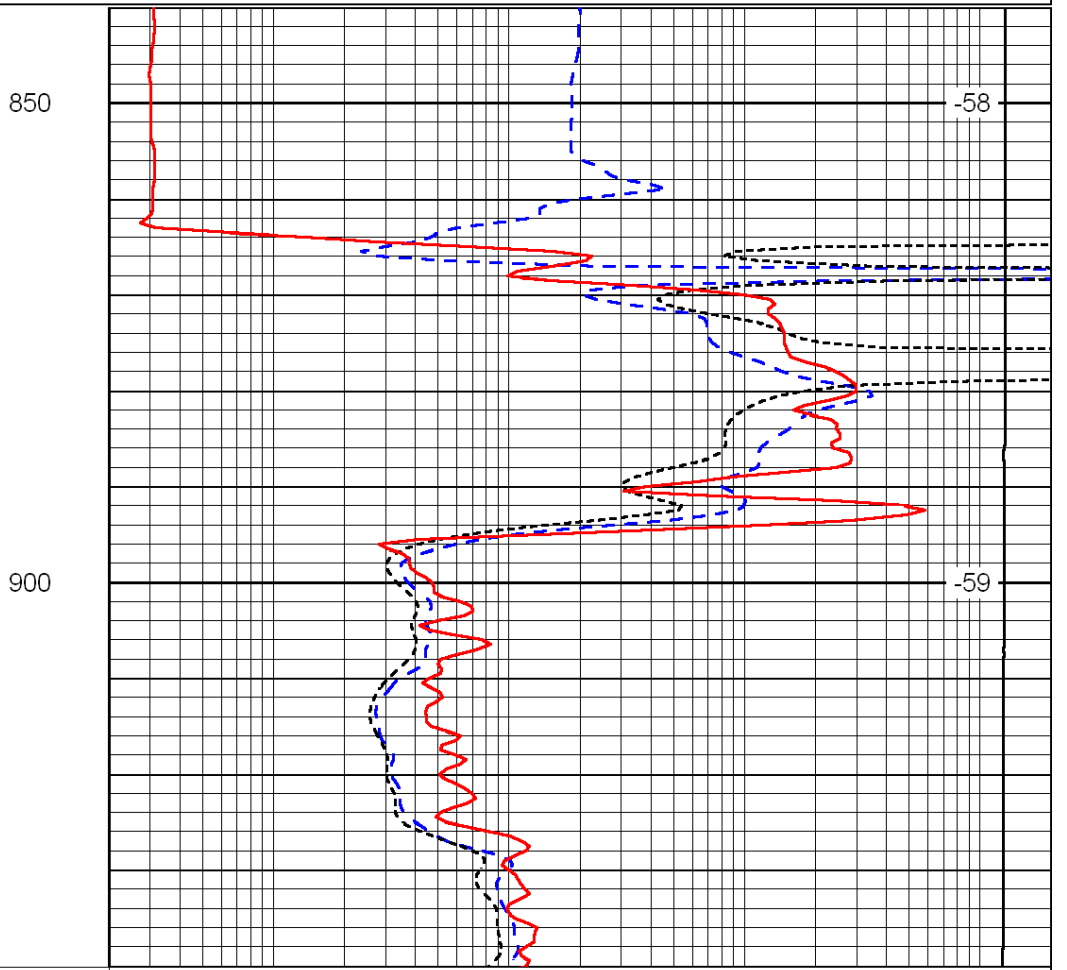
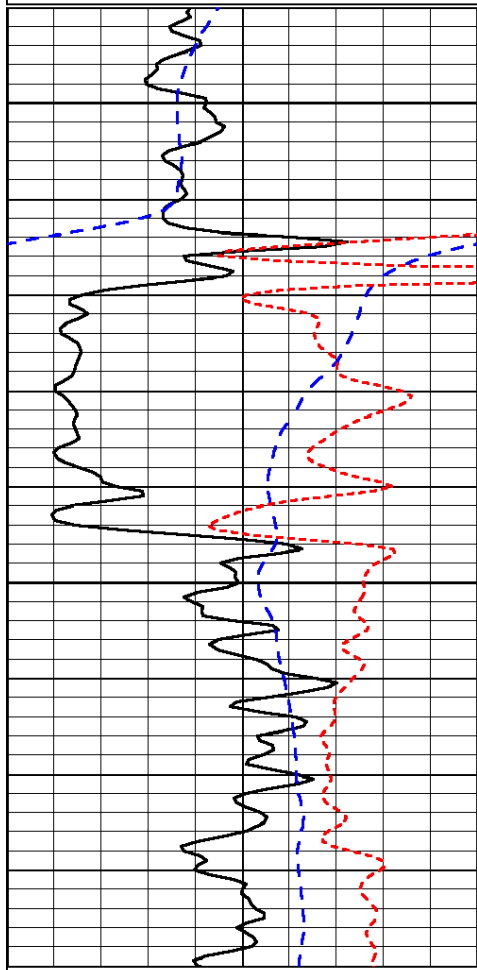
0	Deep Resistivity	50
1000	Conductivity	0
15000	Line Tension	0
50	Shallow Resistivity	500
50	Deep Resistivity	500

Database File: c:\warrior\data\russell_conner no. 12\russell_conner_12hd.db
 Dataset Pathname: DIL/rslstk
 Presentation Format: dil
 Dataset Creation: Wed Mar 21 04:24:26 2012
 Charted by: Depth in Feet scaled 1:240

0	Gamma Ray	150
-200	SP (mV)	0
-160	Rxo / Rt	40

0.2	Deep Resistivity	2000
0.2	Medium Resistivity	2000
0.2	Shallow Resistivity	2000
15000	Line Tension	0

LSPD



0	Gamma Ray	150
-200	SP (mV)	0
-160	Rxo / Rt	40

0.2	Deep Resistivity	2000
0.2	Medium Resistivity	2000
0.2	Shallow Resistivity	2000
15000	Line Tension	0

LSPD

Database File: c:\warrior\data\russell_conner no. 12\russell_conner_12hd.db
 Dataset Pathname: DIL/rslstk
 Presentation Format: dil
 Dataset Creation: Wed Mar 21 04:24:26 2012

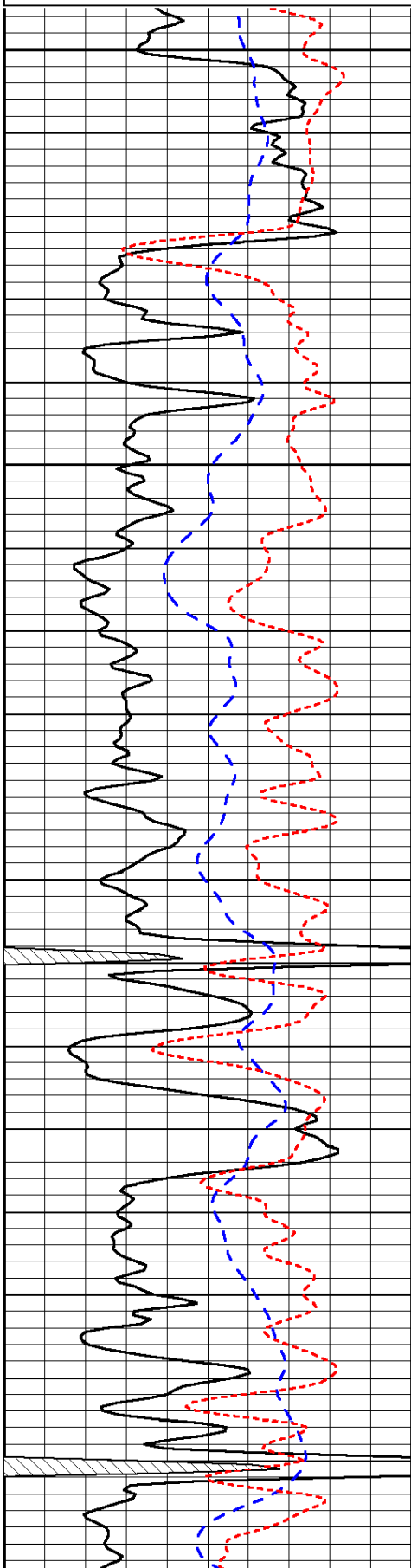
Charted by:

Depth in Feet scaled 1:240

0	Gamma Ray	150
-200	SP (mV)	0
-160	Rxo / Rt	40

0.2	Deep Resistivity	2000
0.2	Medium Resistivity	2000
0.2	Shallow Resistivity	2000
15000	Line Tension	0

LSPD

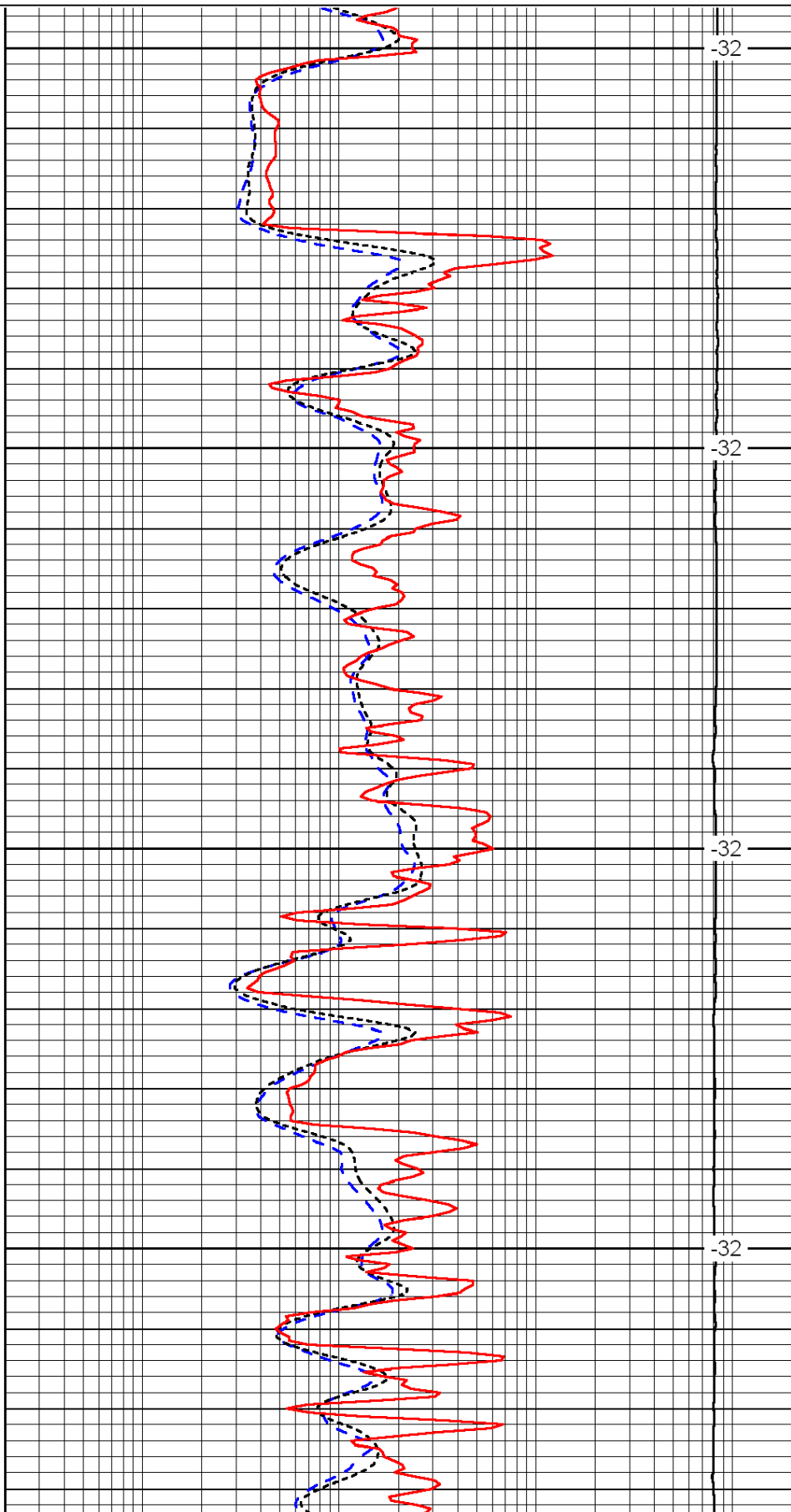


2800

2850

2900

2950

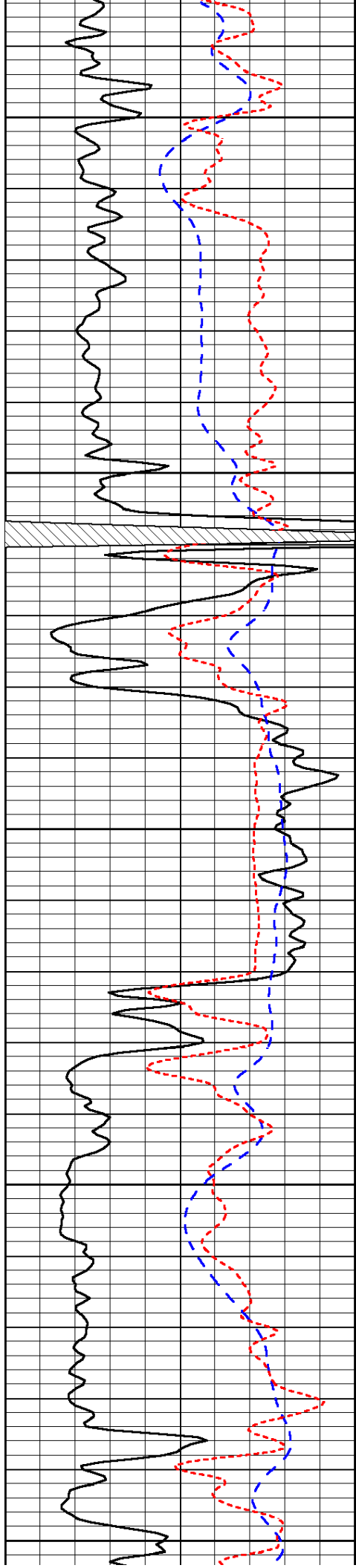


-32

-32

-32

-32



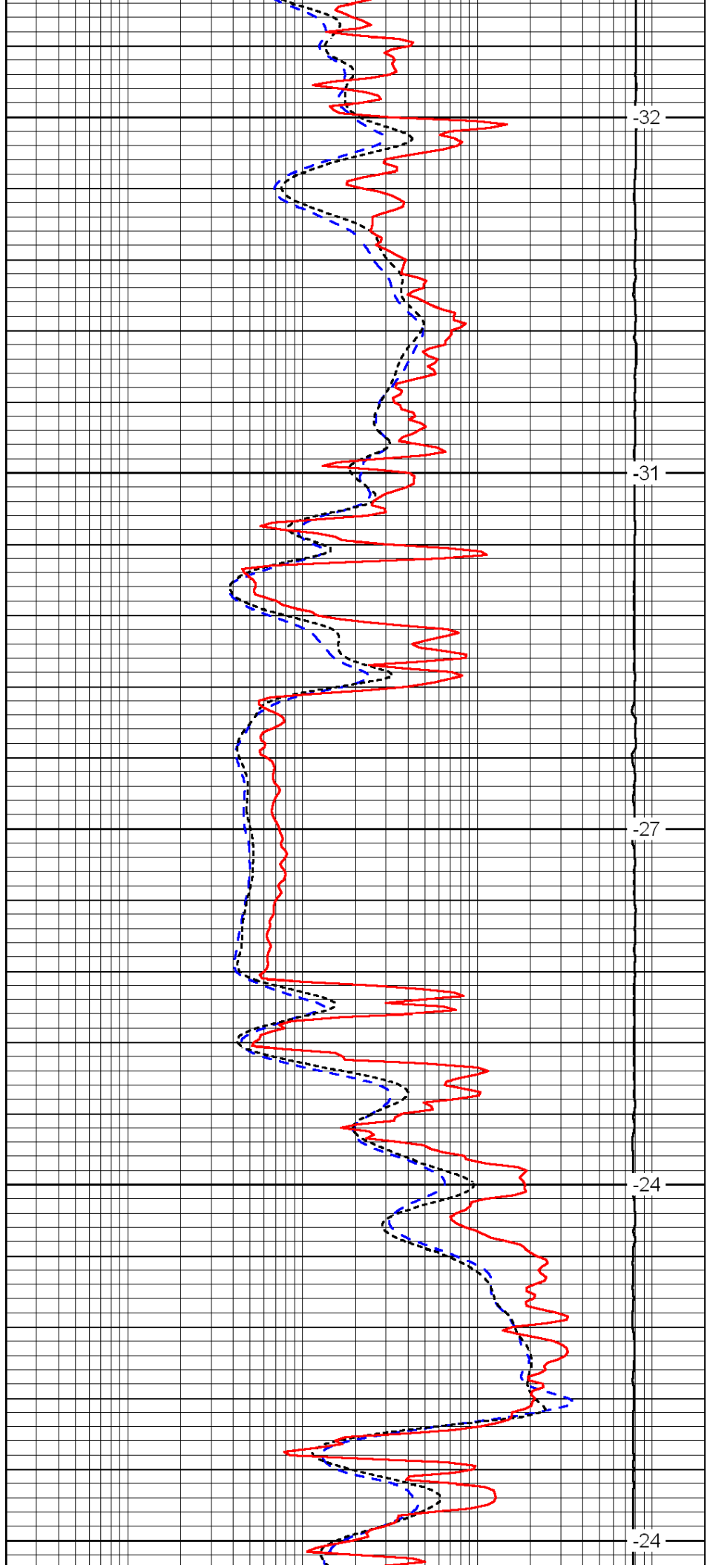
3000

3050

3100

3150

3200



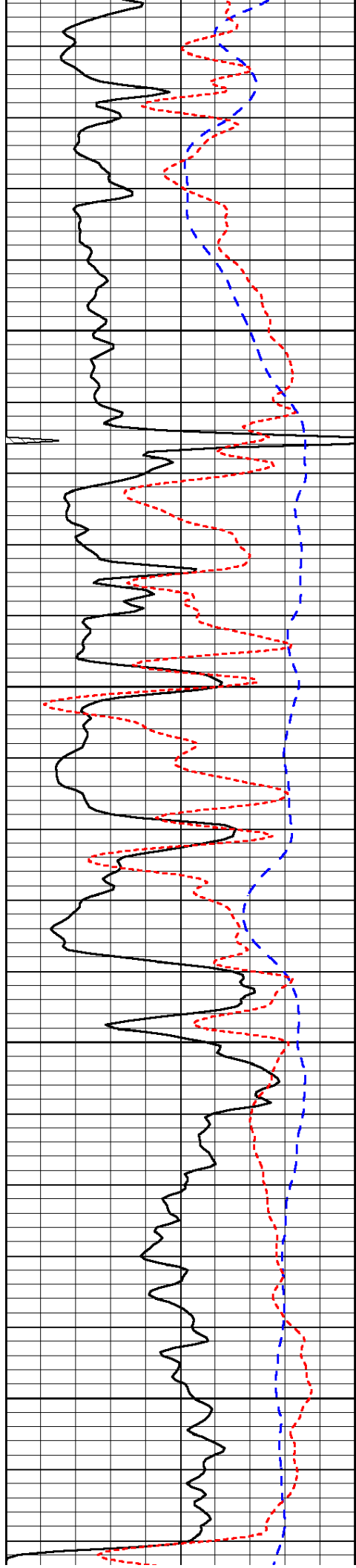
-32

-31

-27

-24

-24

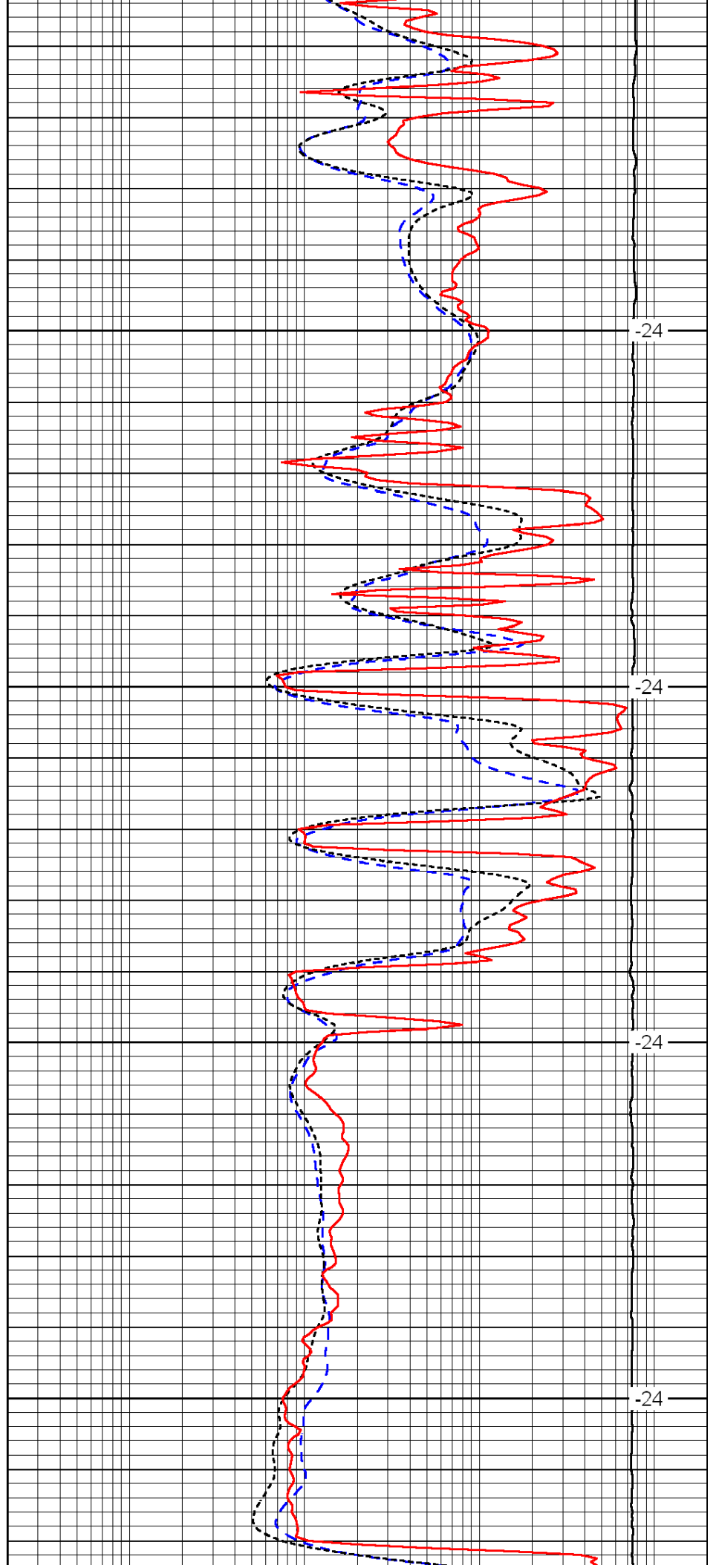


3250

3300

3350

3400

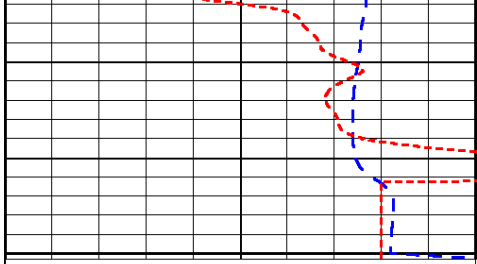


-24

-24

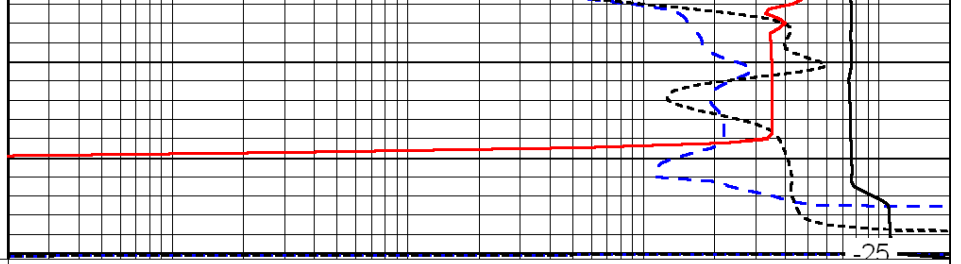
-24

-24



0	Gamma Ray	150
-200	SP (mV)	0
-160	Rxo / Rt	40

3450



0.2	Deep Resistivity	2000
0.2	Medium Resistivity	2000
0.2	Shallow Resistivity	2000
15000	Line Tension	0

LSPD