



DIGITAL LOG (785) 625-3858

Microresistivity Log

15-009-25,670-00-00

API No.

Company Russell Oil, Inc.
 Well Conner No. 12
 Field Carroll
 County Barton State Kansas

Location 1460' FNL & 1225' FEL
 Sec: 21 Twp: 17 S Rge: 14 W

Other Services
 CNL/CDL
 DIL

Permanent Datum Ground Level Elevation 1901
 Log Measured From Kelly Bushing 9 Ft. Above Perm. Datum
 Drilling Measured From Kelly Bushing

Elevation
 K.B. 1910
 D.F. 1901
 G.L. 1901

Date	3/21/2012
Run Number	Two
Depth Driller	3440
Depth Logger	3443
Bottom Logged Interval	3442
Top Log Interval	2800
Casing Driller	8.625 @ 873
Casing Logger	863
Bit Size	7.875
Type Fluid in Hole	Chemical
Salinity, ppm CL	5300
Density / Viscosity	9.1 51
pH / Fluid Loss	10.5 8.8
Source of Sample	Flowline
Rm @ Meas. Temp	.75 @ 70
Rmf @ Meas. Temp	.56 @ 70
Rmc @ Meas. Temp	1.01 @ 70
Source of Rmf / Rmc	Charts
Rm @ BHT	.47 @ 112
Operating Rig Time	3 1/2 Hours
Max Rec. Temp. F	112
Equipment Number	91
Location	Hays
Recorded By	D. Kerr
Witnessed By	Kitt Noah

<<< Fold Here >>>

All interpretations are opinions based on inferences from electrical or other measurements and we cannot and do not guarantee the accuracy or correctness of any interpretation, and we shall not, except in the case of gross or willful negligence on our part, be liable or responsible for any loss, costs, damages, or expenses incurred or sustained by anyone resulting from any interpretation made by any of our officers, agents or employees. These interpretations are also subject to our general terms and conditions set out in our current Price Schedule.

Comments

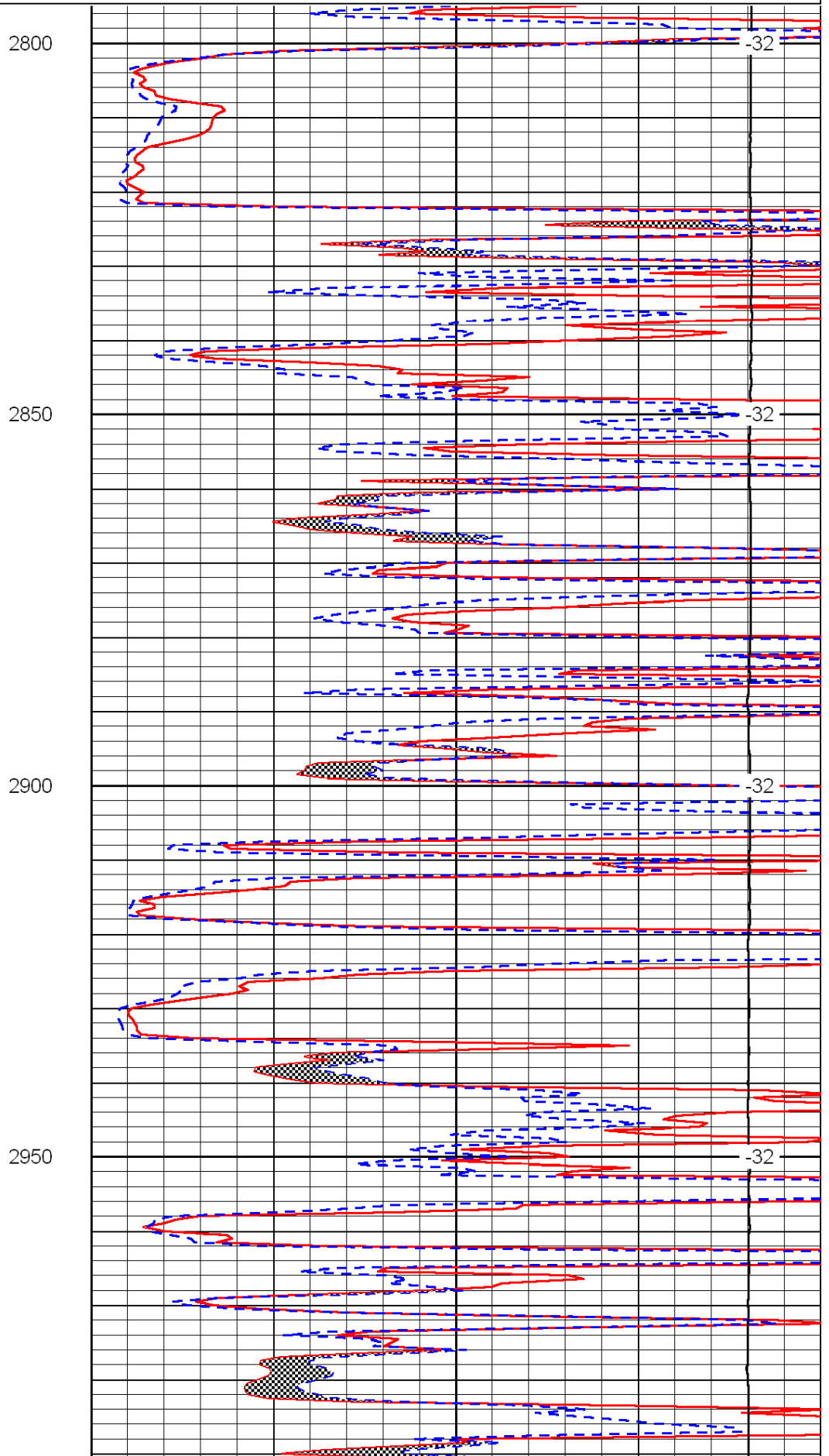
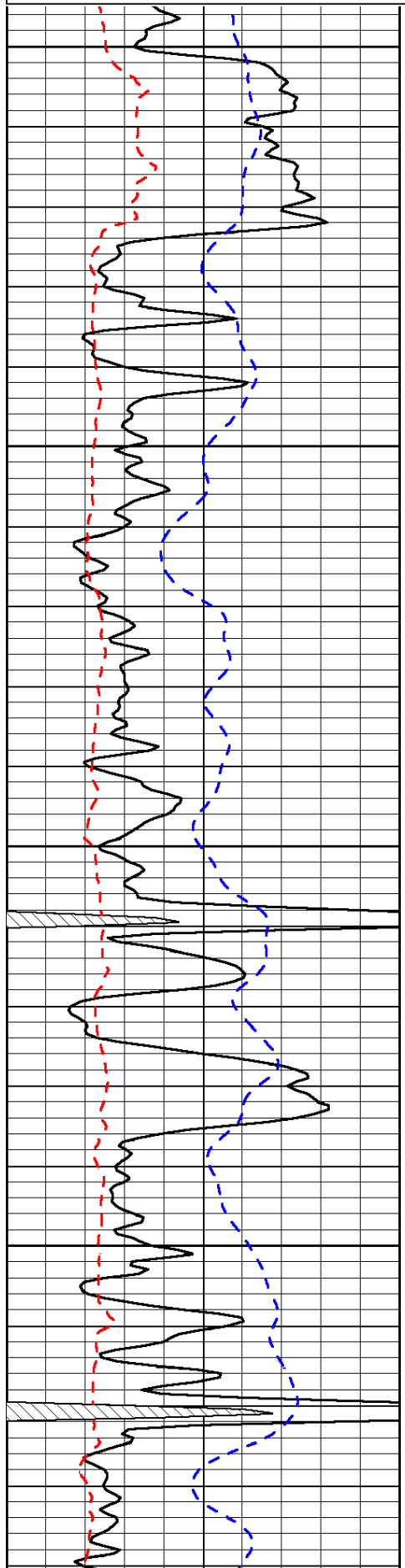
Thank you for using Log-Tech, Inc.
 (785) 625-3858
 Russell KS,
 South to HWY 281 and HWY 4,
 1 West, 1 1/2 North, West Into

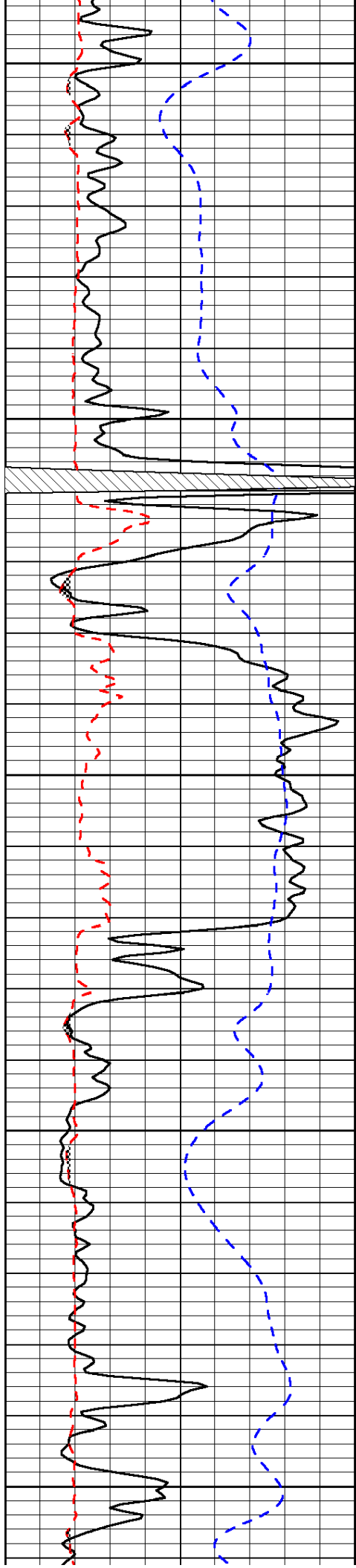
Database File: c:\warrior\data\russell_conner no. 12\russell_conner_12hd.db
 Dataset Pathname: DIL/rslstk
 Presentation Format: micro
 Dataset Creation: Wed Mar 21 04:24:26 2012
 Charted by: Depth in Feet scaled 1:240

0	Gamma Ray	150
6	Micro Log Caliper (GAPI)	16
-200	SP (mV)	0

0	Micro Inverse 1 X 1	40
0	Micro Normal 2"	40
15000	Line Weight	0

LSPD





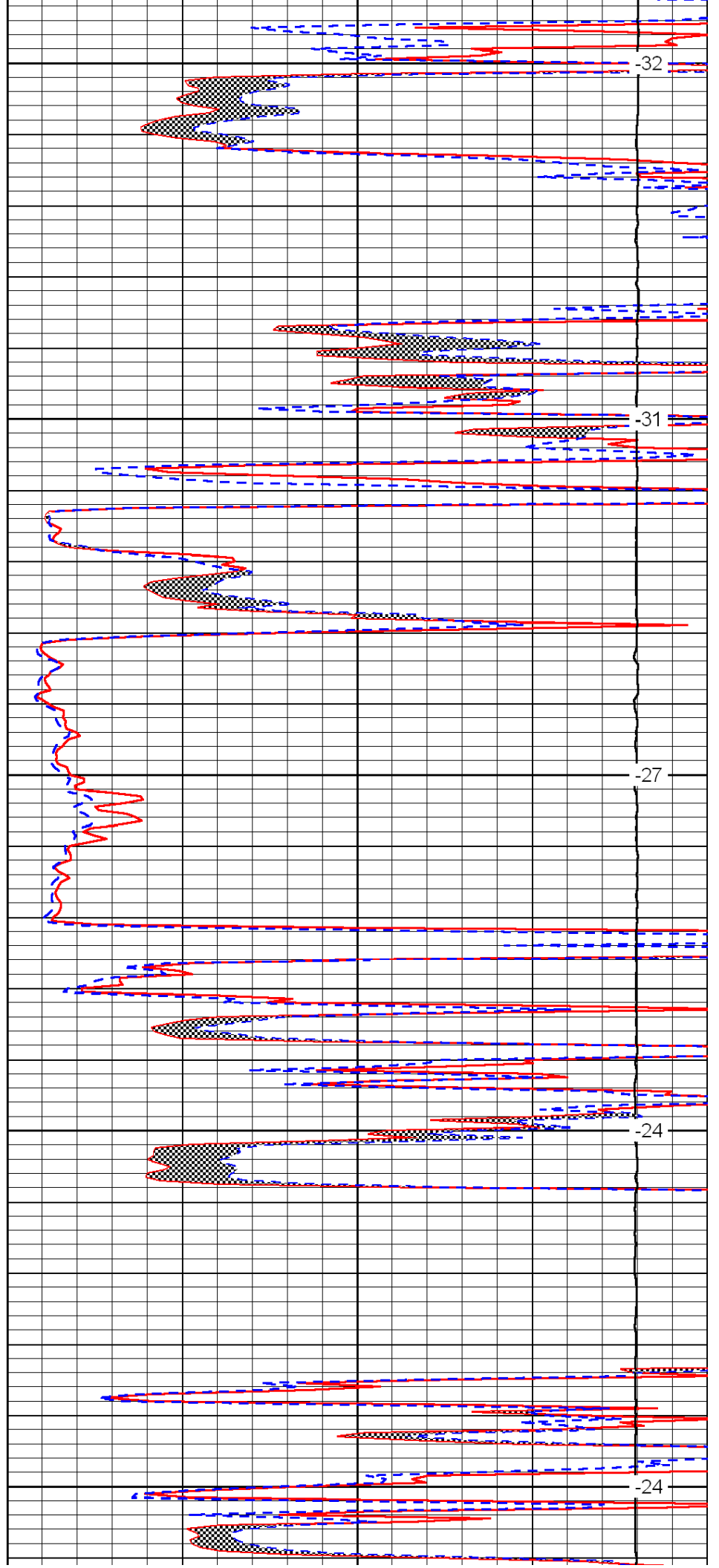
3000

3050

3100

3150

3200



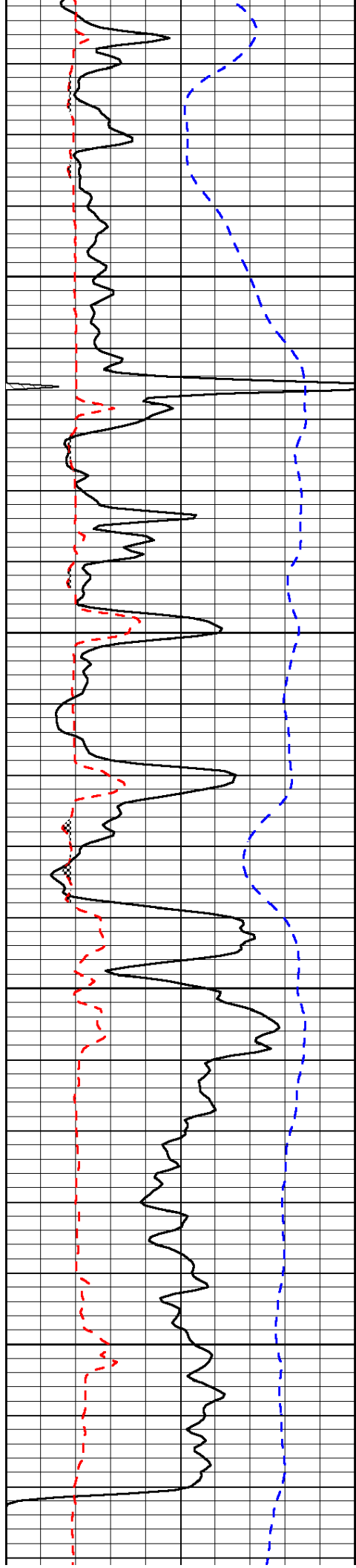
-32

-31

-27

-24

-24

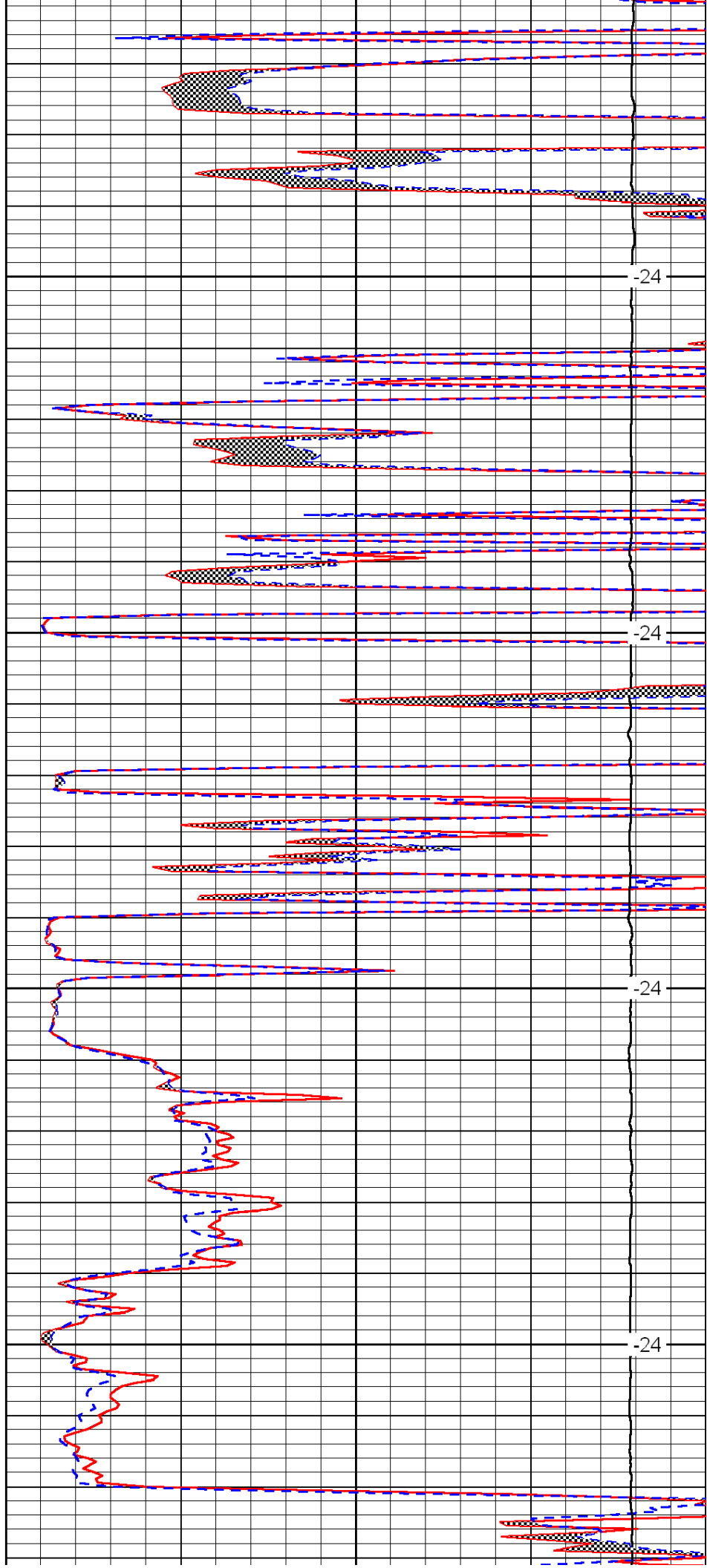


3250

3300

3350

3400

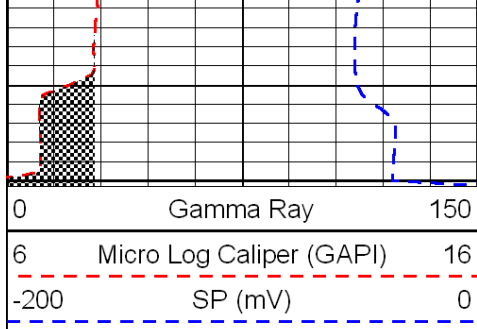


-24

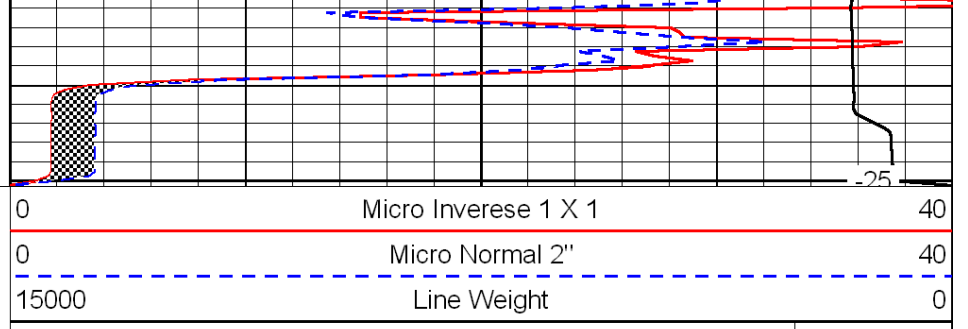
-24

-24

-24



3450



-25

LSPD