

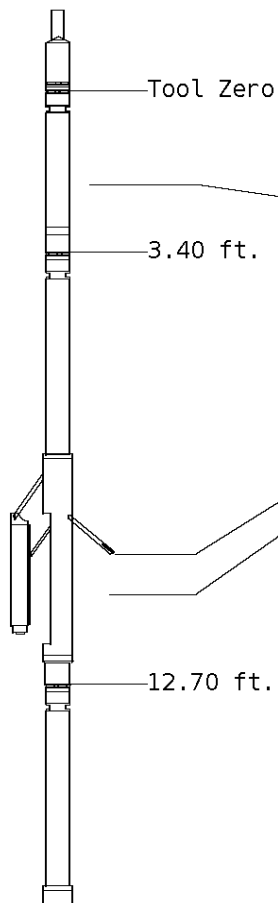
ALL PRESENTATIONS AS PER CUSTOMER REQUEST
 GRT, CNT, LDT, AND PIT RUN IN COMBINATION.
 CALIPERS ORIENTED ON X-Y AXIS.
 2.71 G/CC USED TO CALCULATED POROSITY.
 ANNULAR HOLE VOLUME CALCULATED USING 5.500" PRODUCTION CASING.

GRT: GRP.
 CNT: PHIN, CLCNIN
 LDT: PORL, LCORN, PECLN, LDENN, PORLLS, CLLDIN.
 PIT: ILD, ILM, SPU, SFLAEC

OPERATORS:
 M.BURKE

Tool String Schematic

Total Tool Length - 43.49 ft.
Maximum Outside diameter - 4.80 in.
Net Weight in Air - 743.00 lbs.



Tool: GRT-B **Length:** 3.40 ft. **O.D.** 3.60 in.
 Gamma Ray Controller

Sonde ID : GRT-BB-109

Measure Point	Tool Offset	Stack Offset	Bottom Offset
GRP	2.00	2.00	41.49

Tool: CNT-AA **Length:** 9.30 ft. **O.D.** 4.36 in.
 Compensated Neutron A Pad on NDT-A

Sonde ID : NDT-BB-123

Source ID : N-1045

Pad ID : CNP-AA-102

Measure Point	Tool Offset	Stack Offset	Bottom Offset
CLCN	6.00	9.40	34.09
PHIN	6.80	10.20	33.29

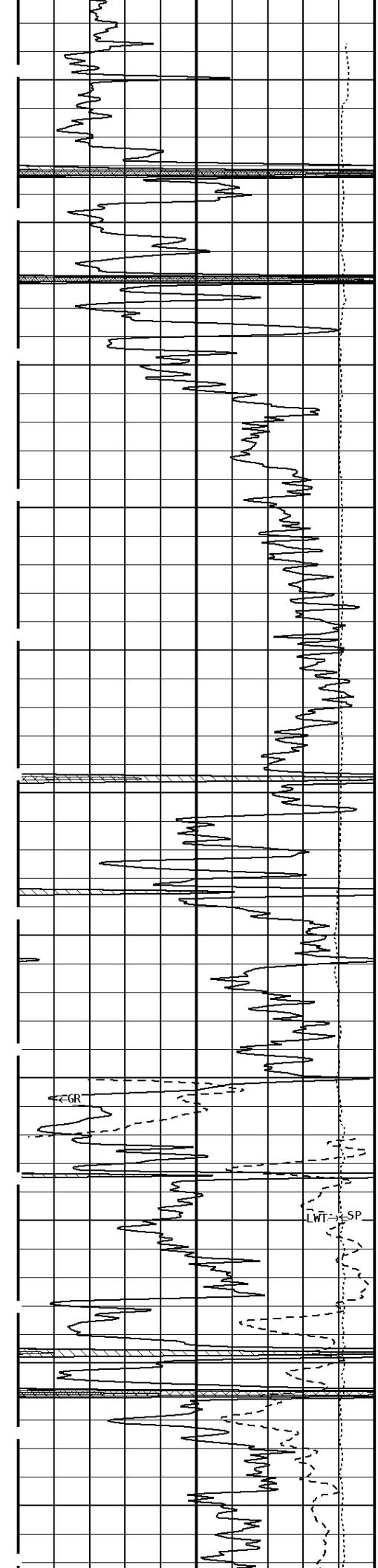
Tool: LDT-DA **Length:** 9.30 ft. **O.D.** 4.80 in.
 Litho Density D Pad on NDT-A

Sonde ID : NDT-BB-139

Source ID : CSV_B45

Pad ID : LDP_DA_35

Measure Point	Tool Offset	Stack Offset	Bottom Offset
CLLD	6.00	18.70	24.79
PEL	7.00	19.70	23.79
PES	7.40	20.10	23.39



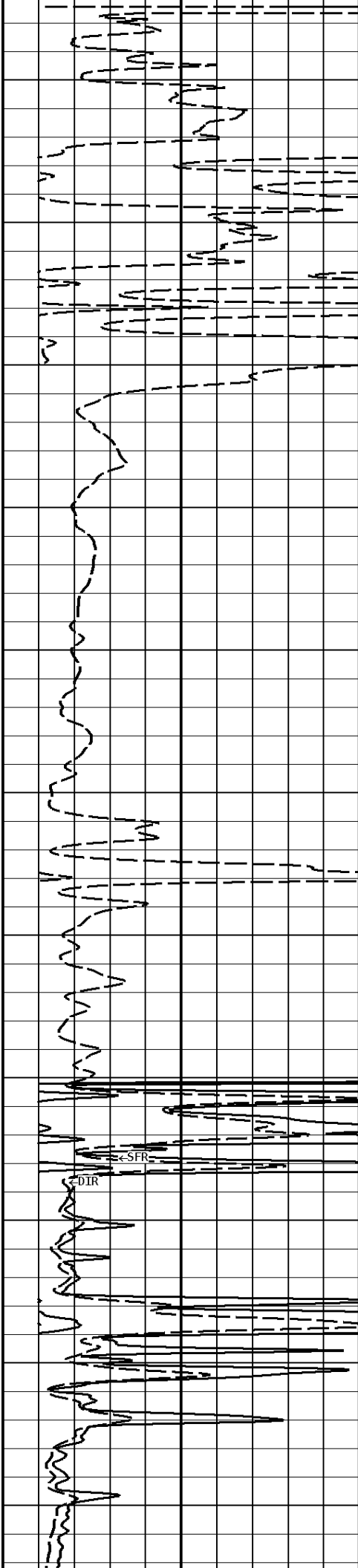
100

200

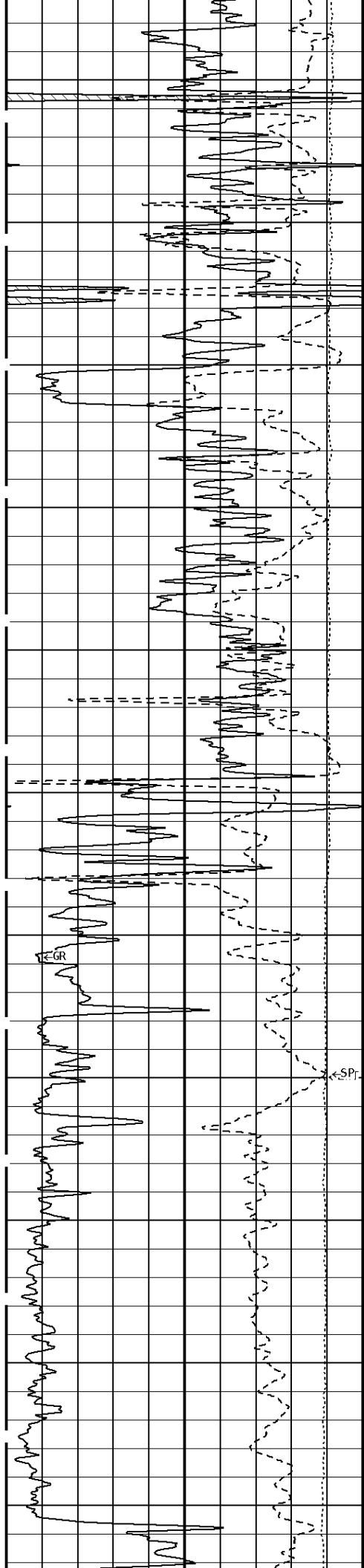
300

400

500



DTC



600

700

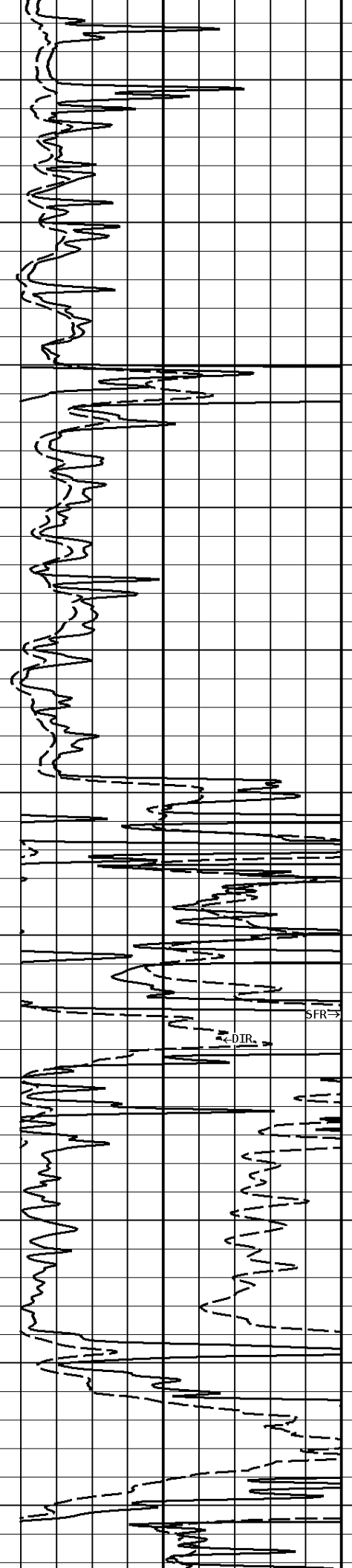
800

900

1000

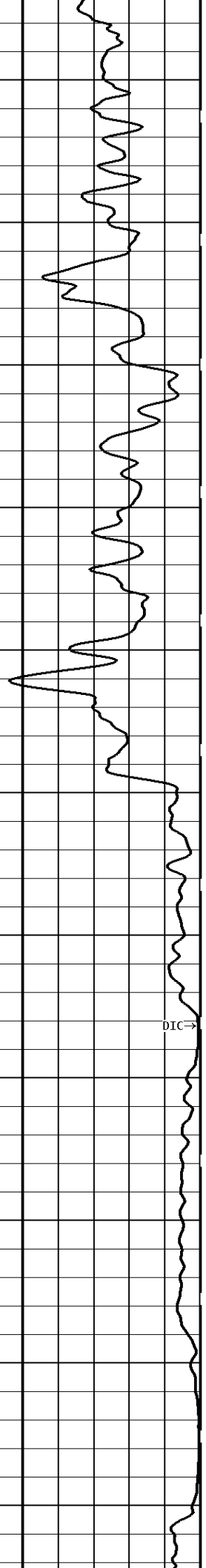
1100

←SPR

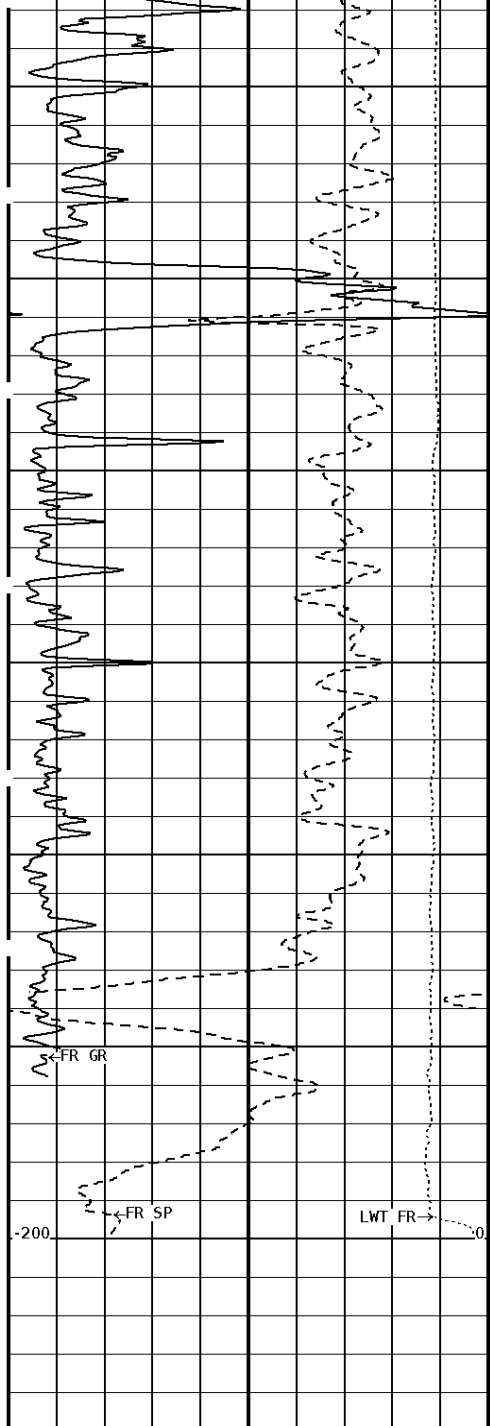


→SFR

→DIR

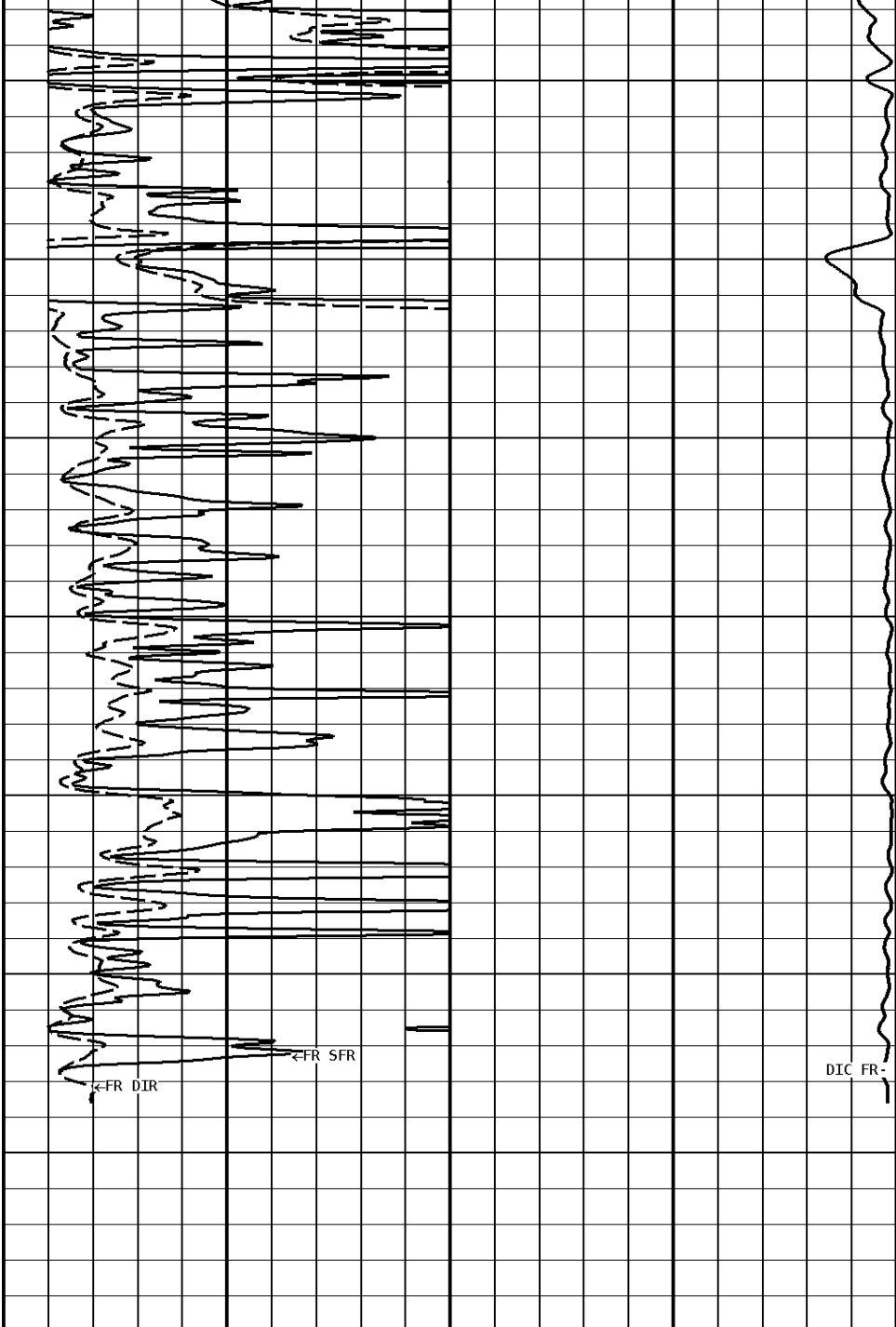


→DIC

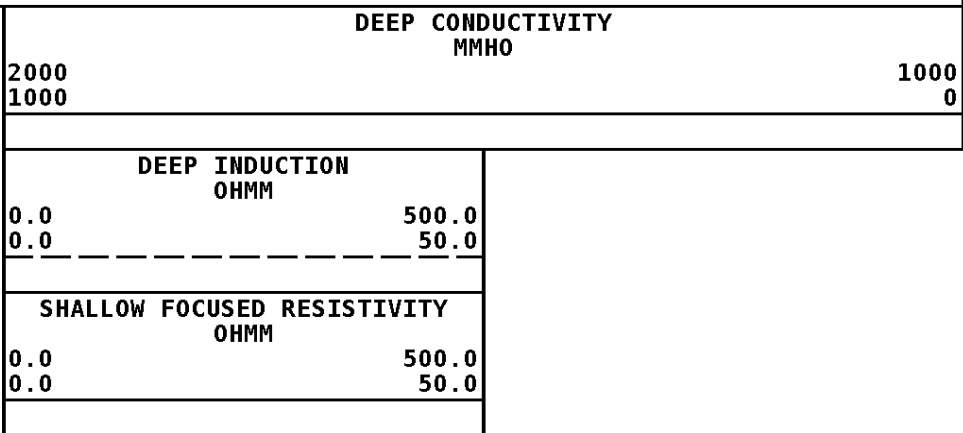
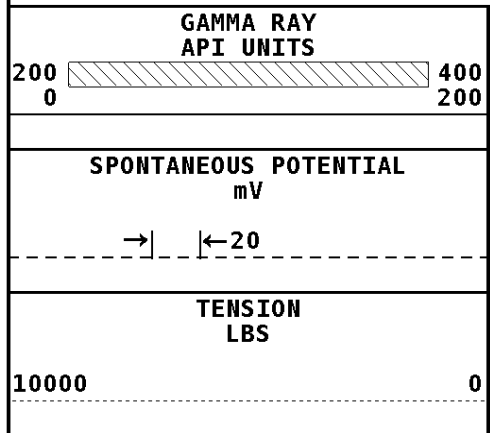


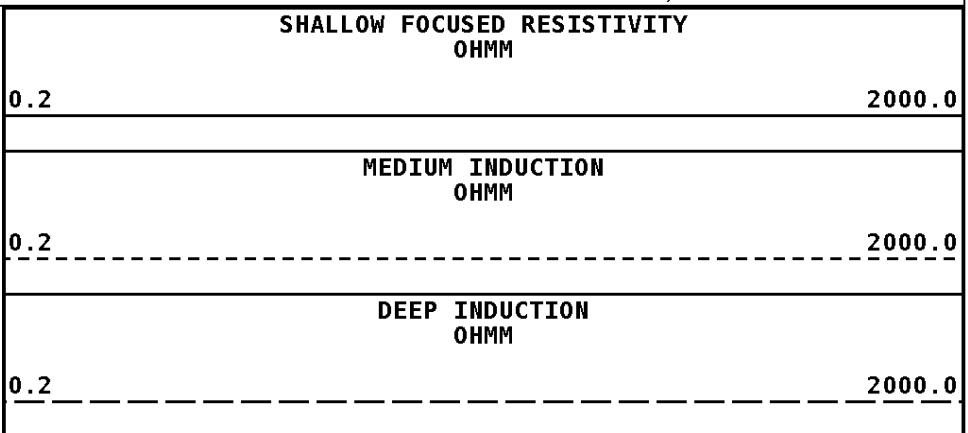
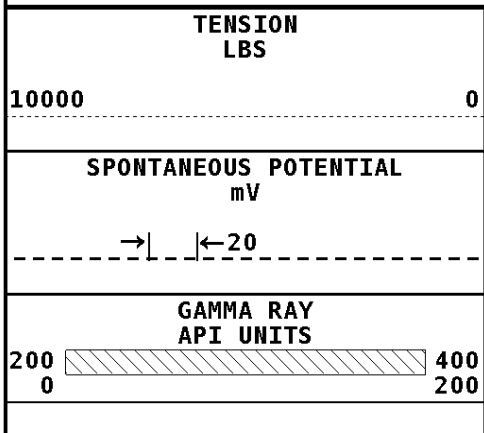
File #1.1.8

1200
1300
1400
1445

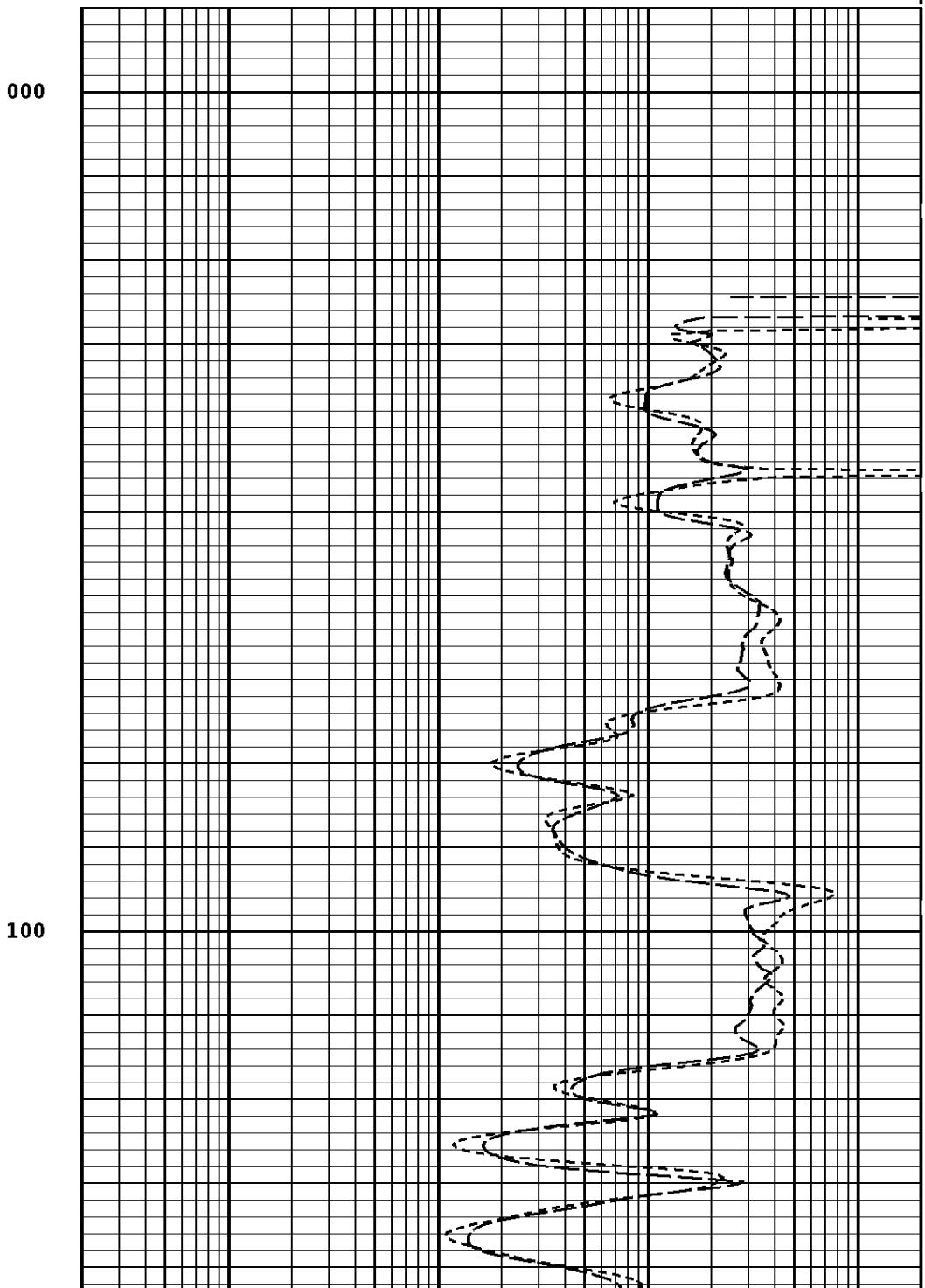
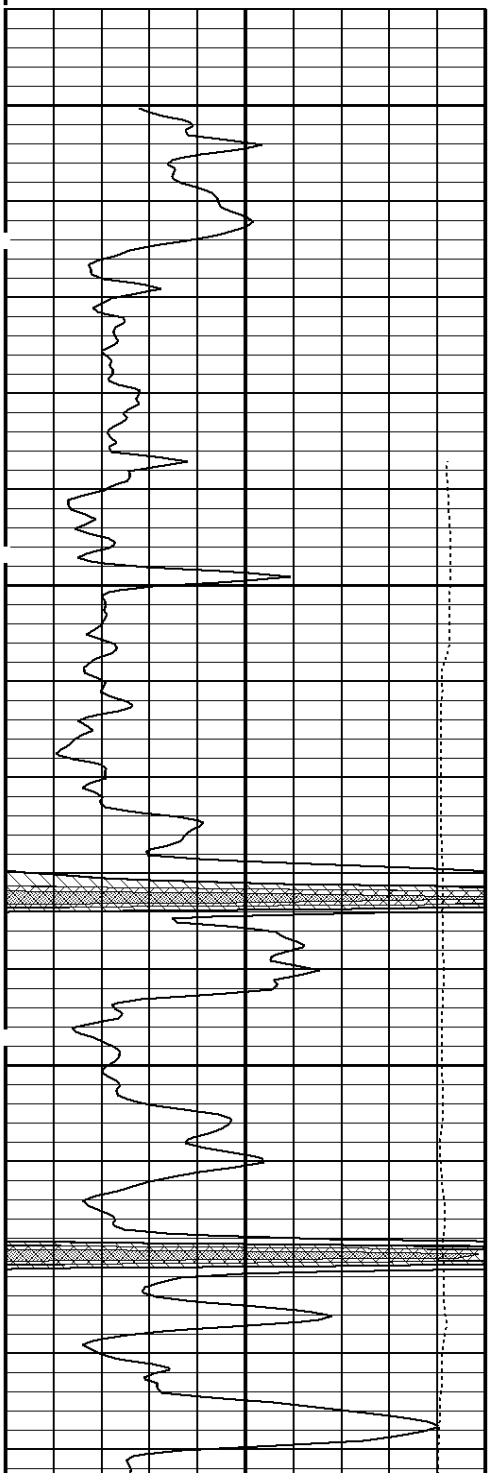


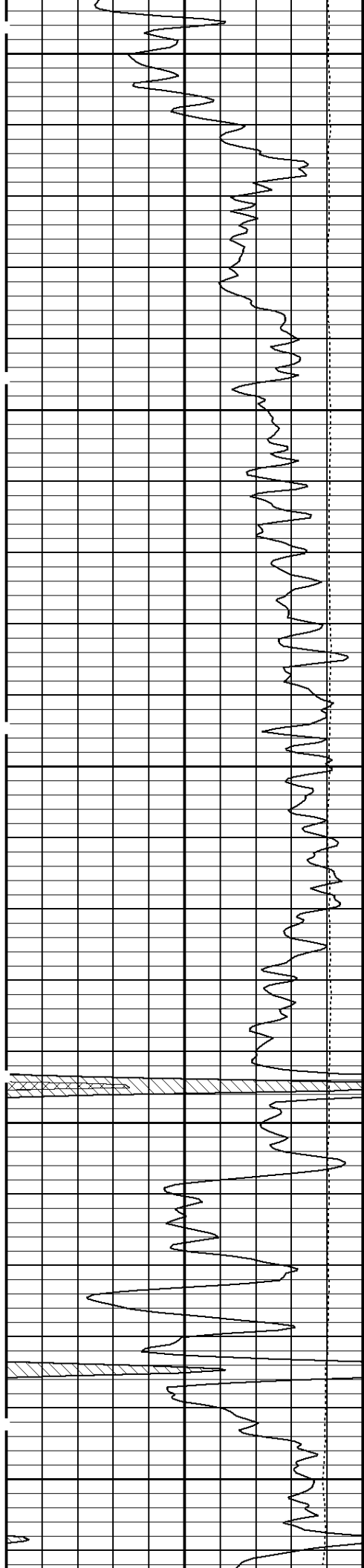
1:600 SECTION
2 INCH





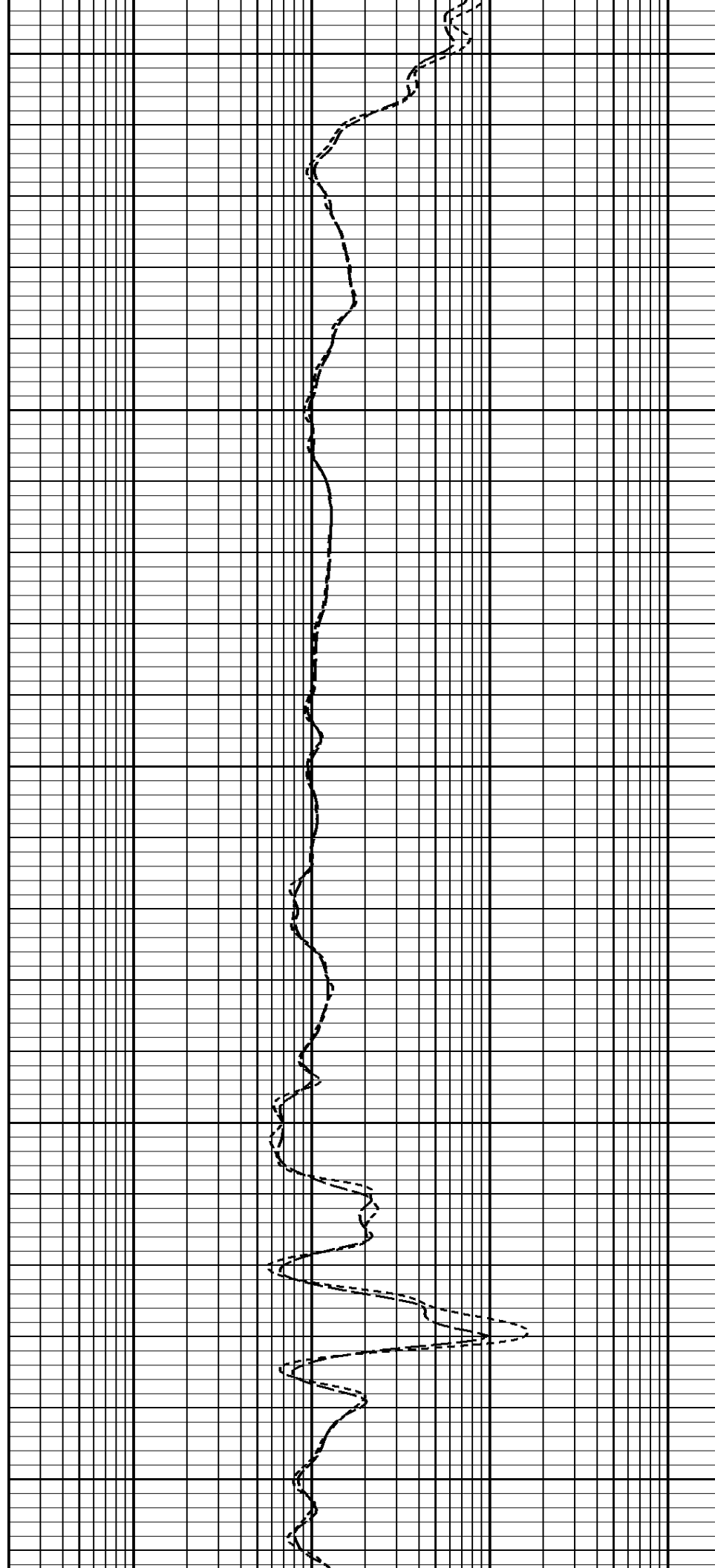
1:240 MAIN SECTION

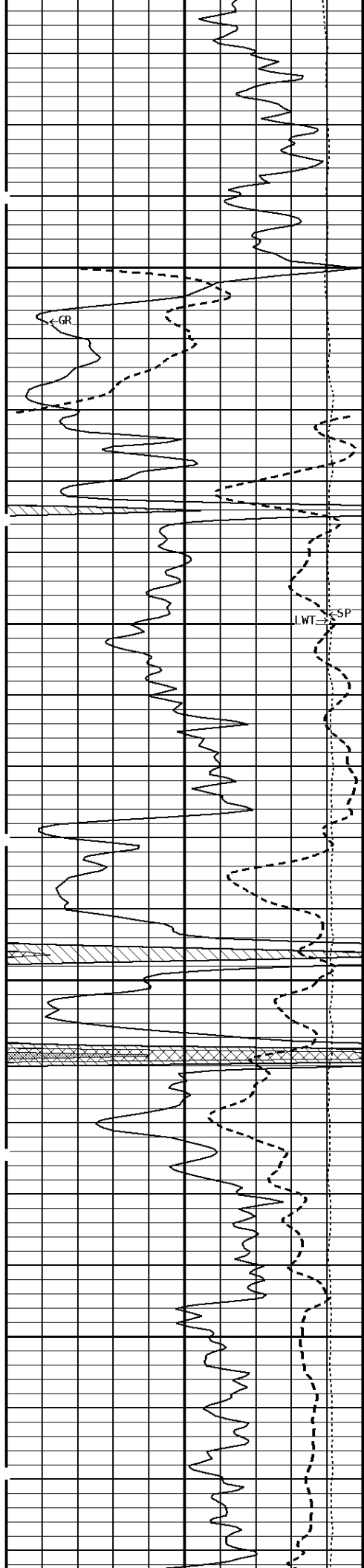




200

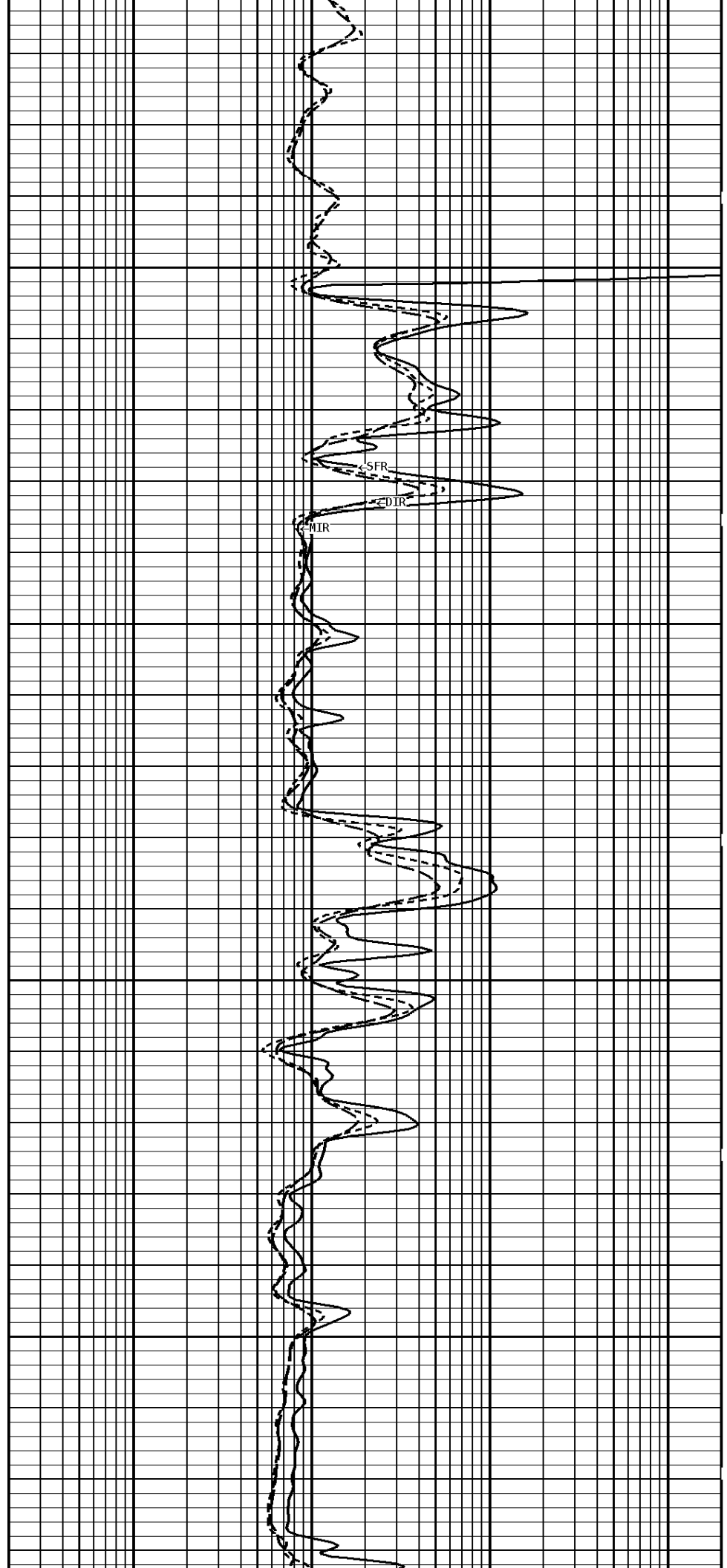
300

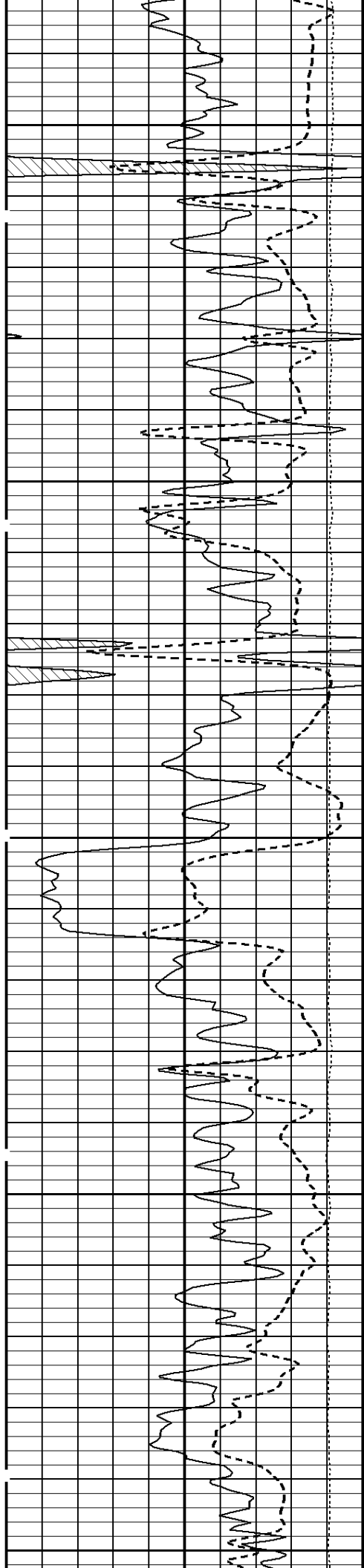




400

500

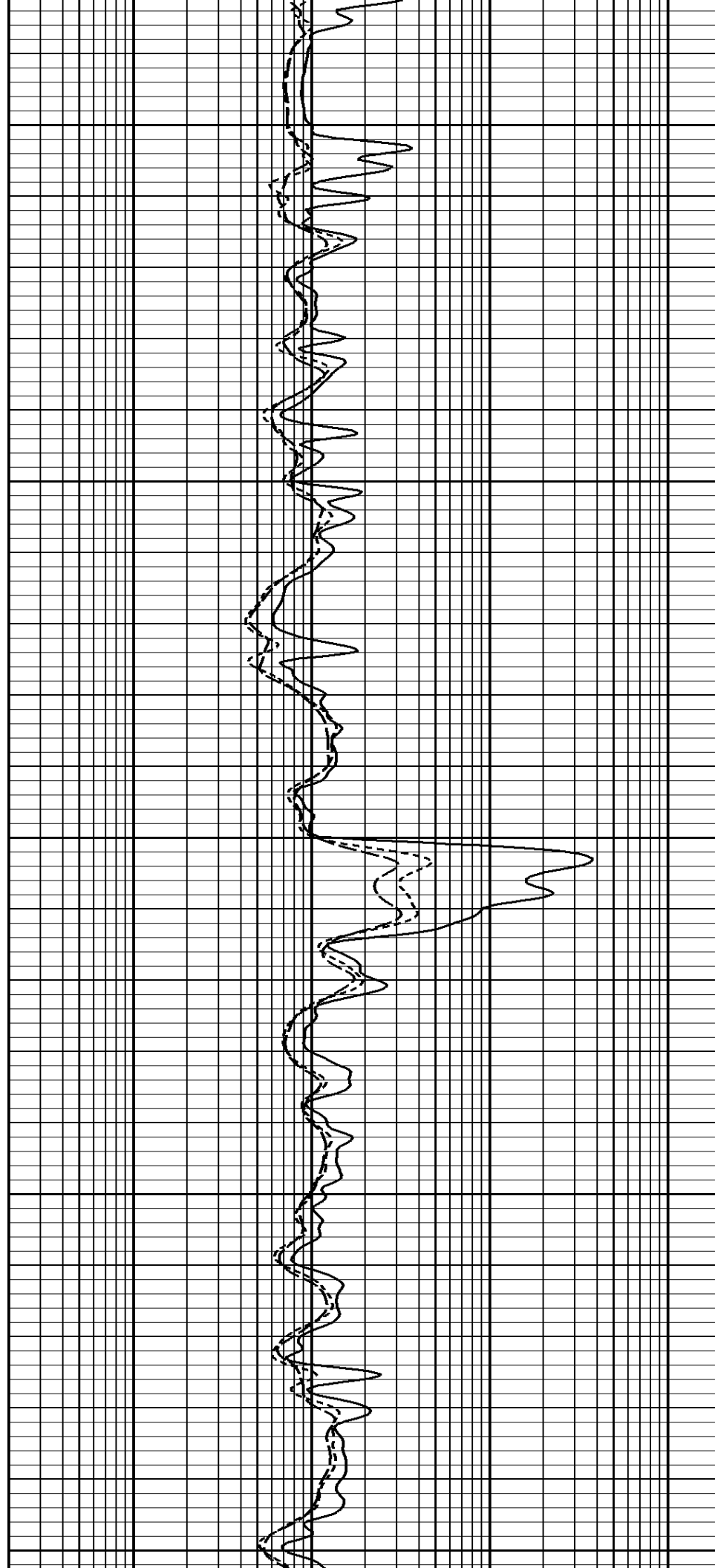


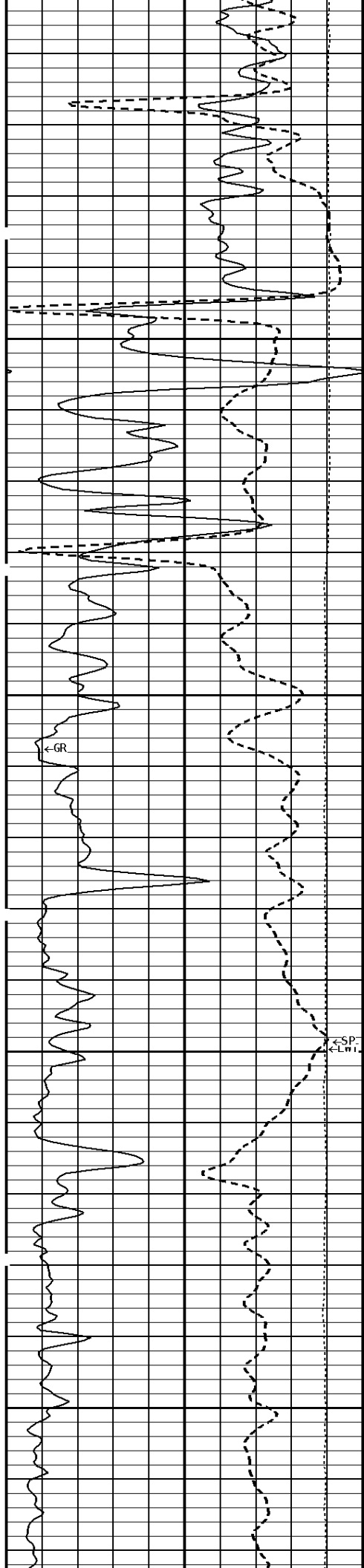


600

700

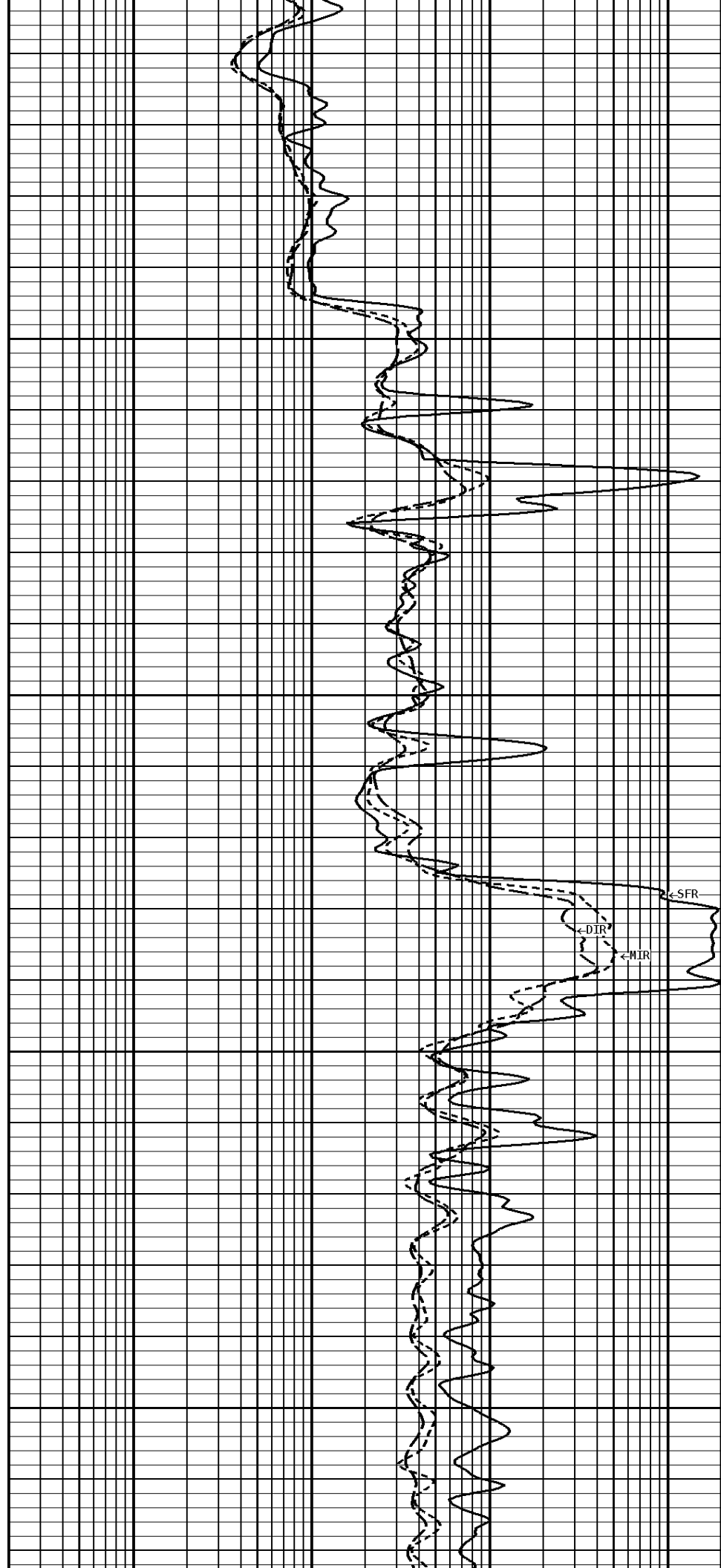
800

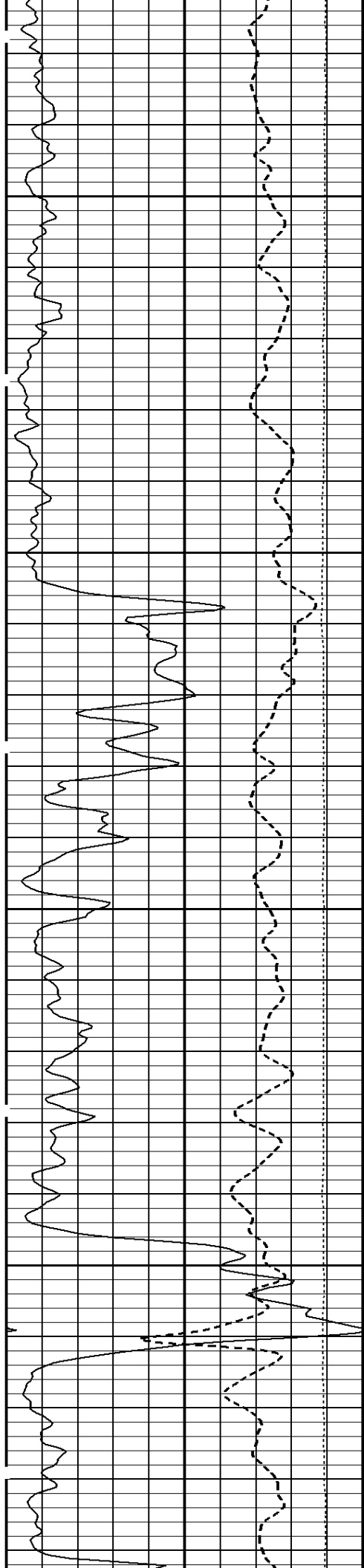




900

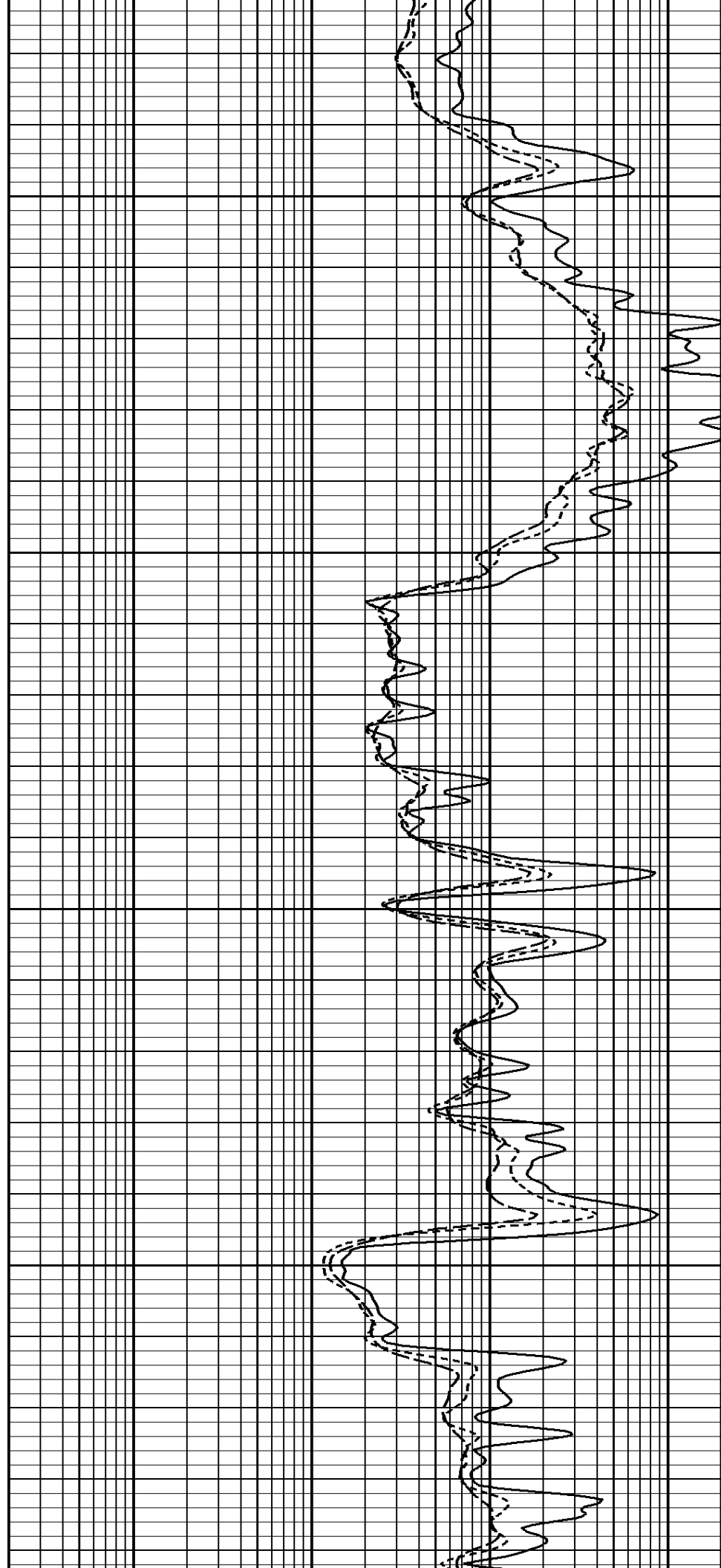
1000

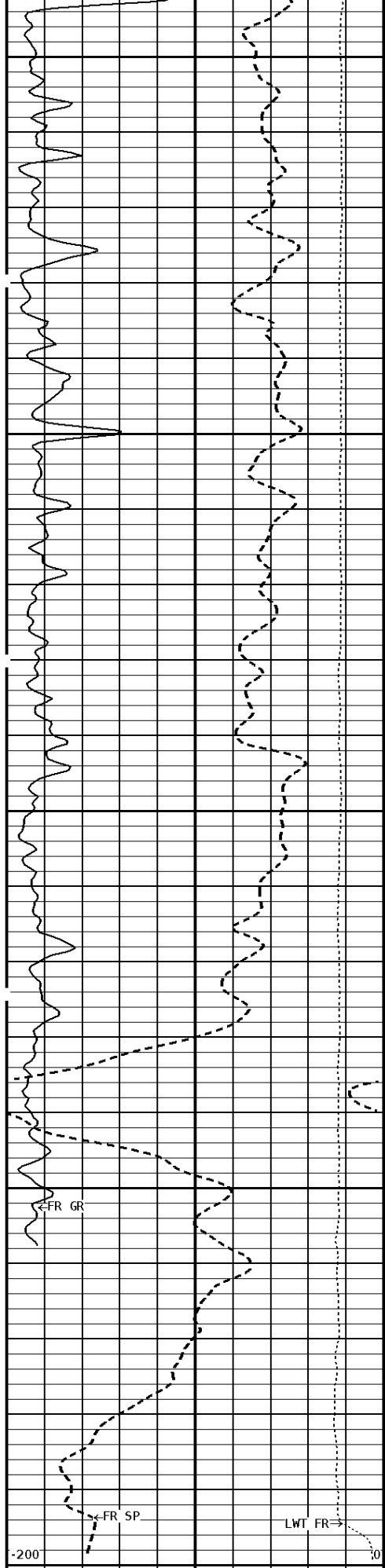




1100

1200

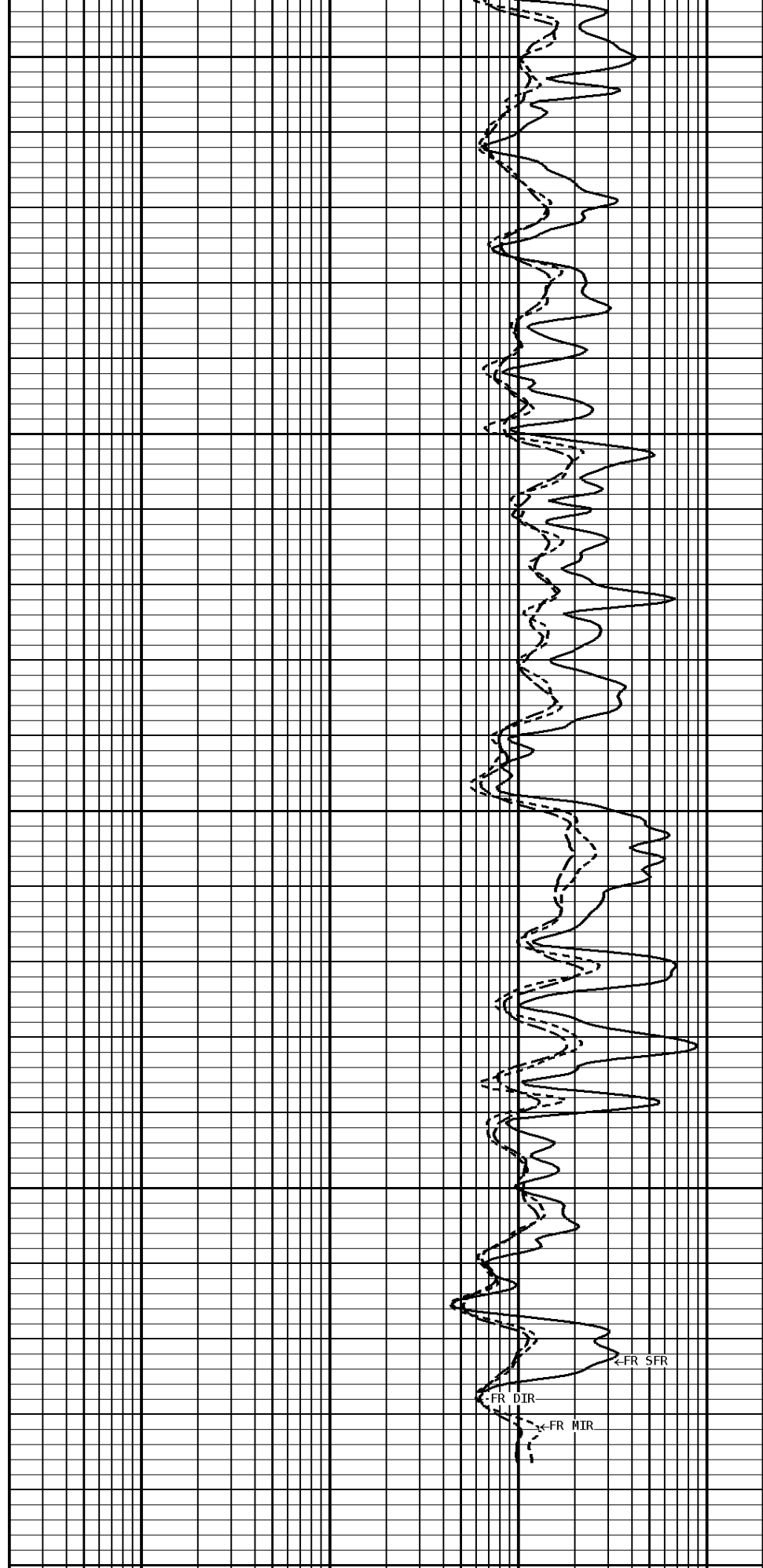




1300

1400

1445



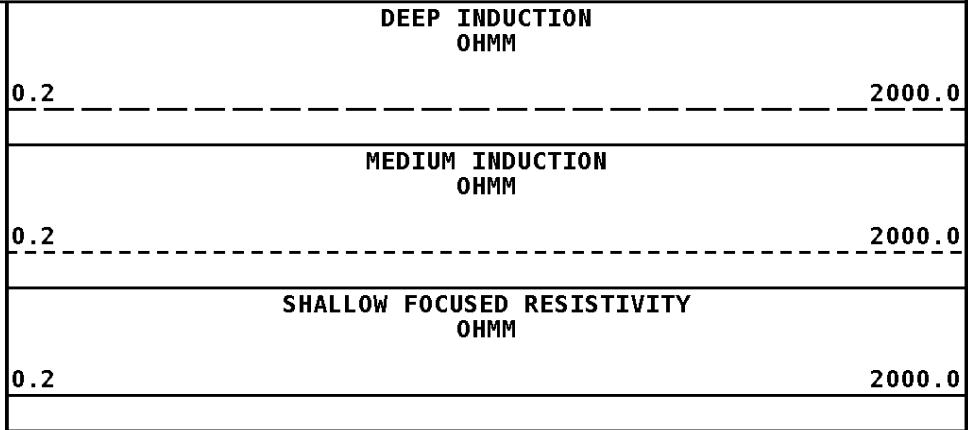
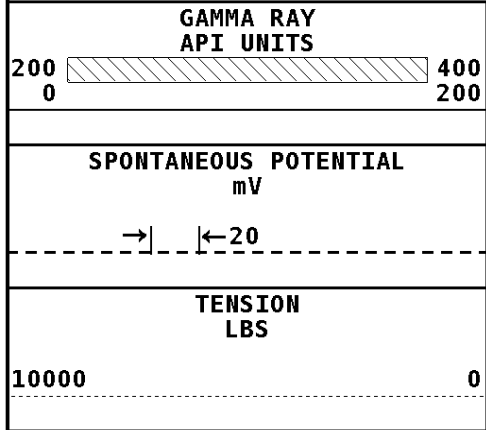
FR SFR

FR DIR

FR MIR

File #1.1.8

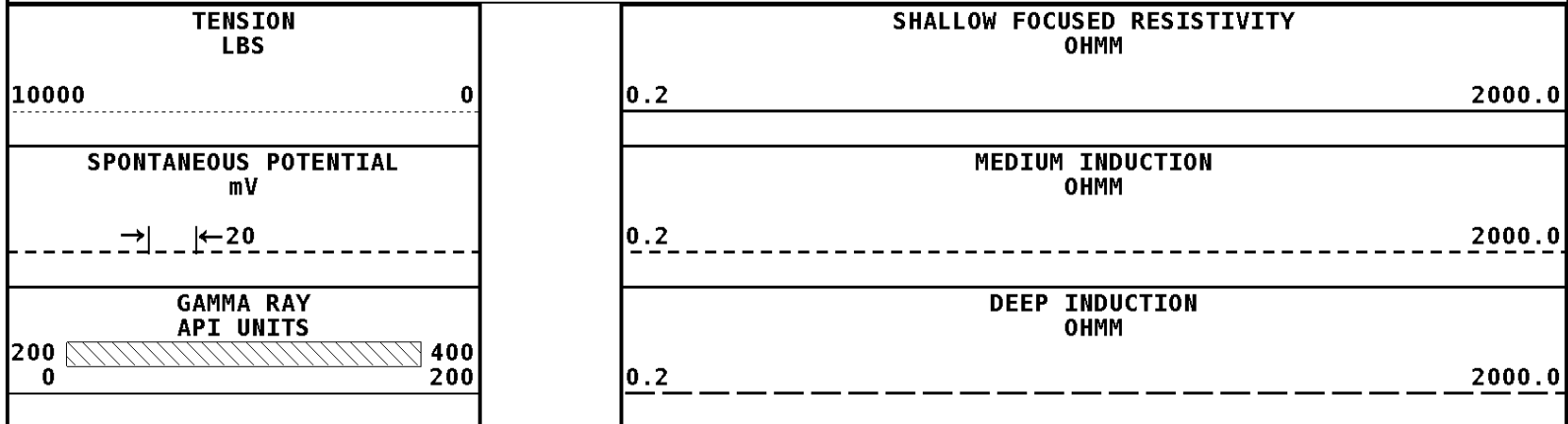
1:240 MAIN SECTION



* Borehole Zone Factors *

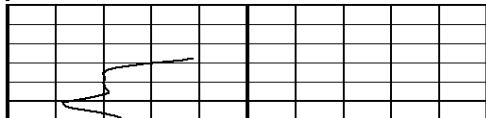
Zone 1 99999.0 to 0.0 Feet	
Drill Bit Size	7.875 in
BHT Depth	1450.000 ft
Borehole Temperature	95.0 degF
Temperature Gradient	1.00 DFHF
Resistivity Of Mud	0.200 ohm/m
Standoff	0.0
Resistivity Of Mud Temperature	82.00 degF

Well File: RFP DICKERSON-15-22-SWD APR4 STK **Scale:** 1:240
Segment: V1.D1.S4 REPROCESS OF REPEAT SECTION **Acquired:** 2012-04/04 14:31 3.2.0-10801
Reference: 0 **Processed:** 2012-04/04 16:42 3.2.0-10801



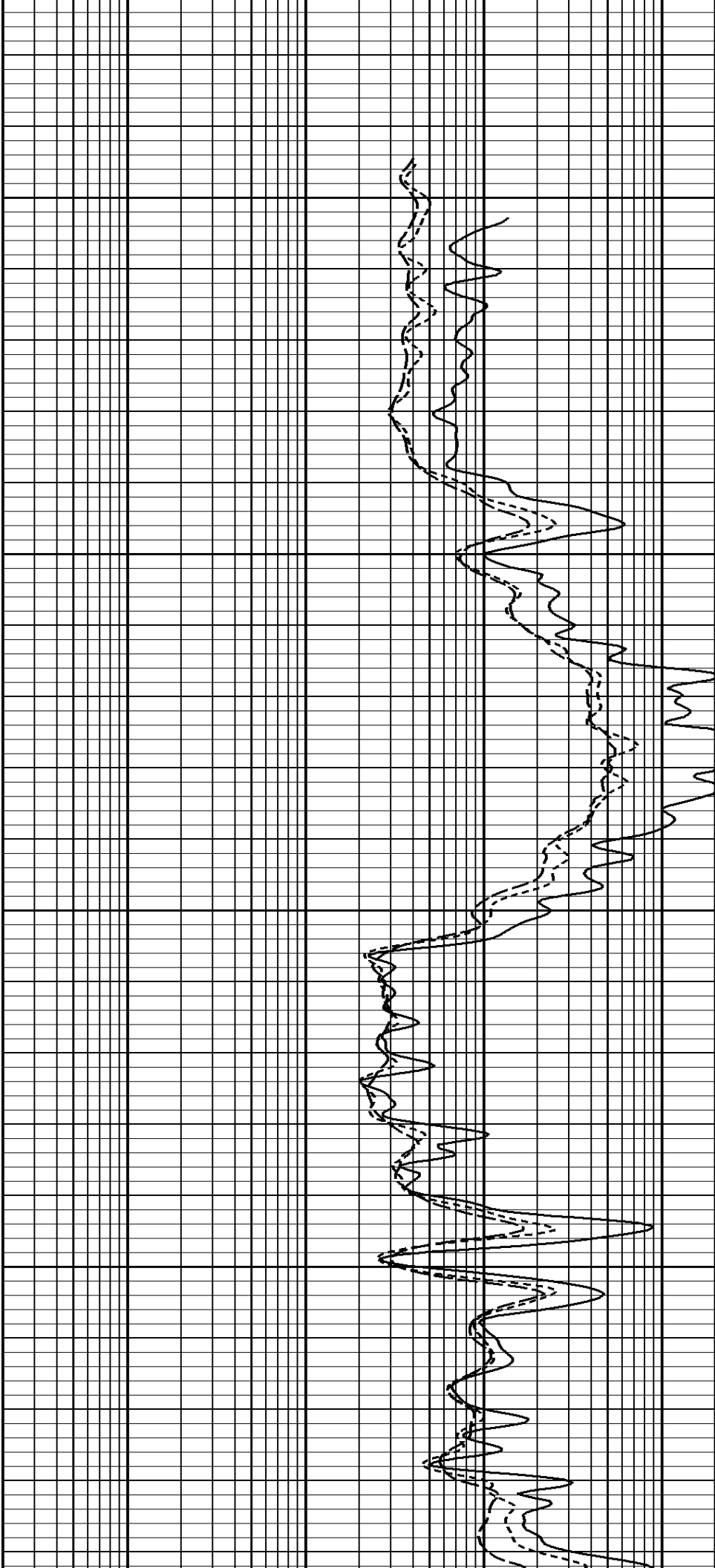
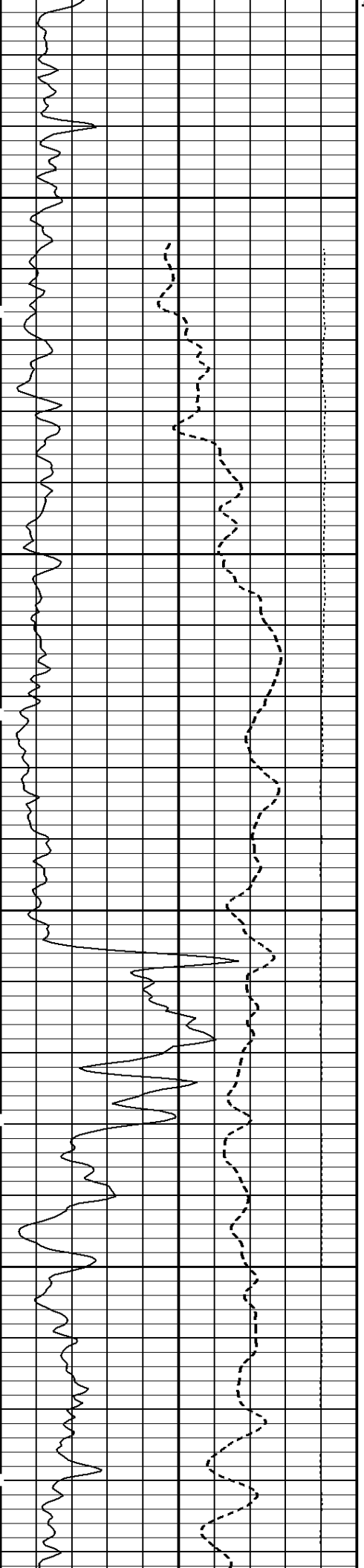
1:240 REPEAT SECTION

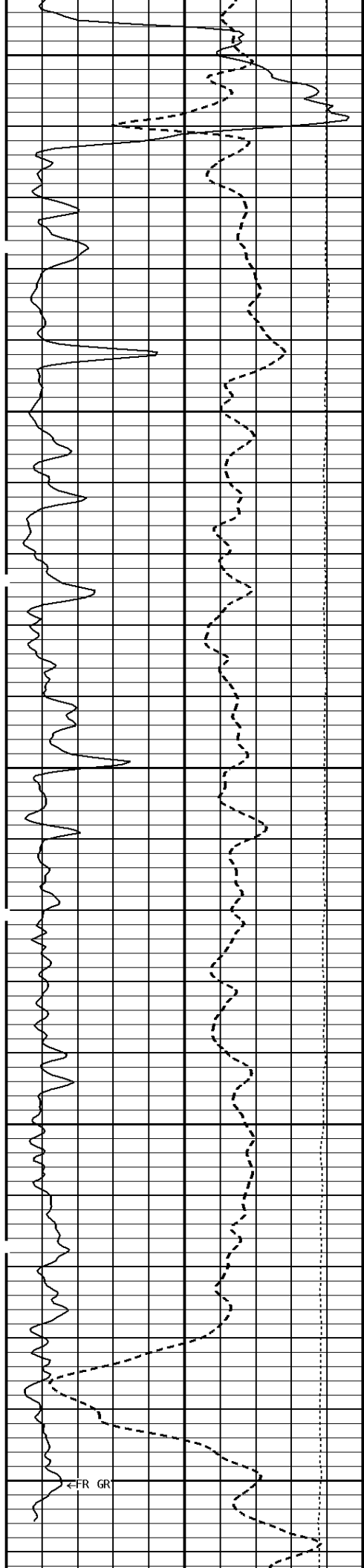
File #1.1.1



1000

1100

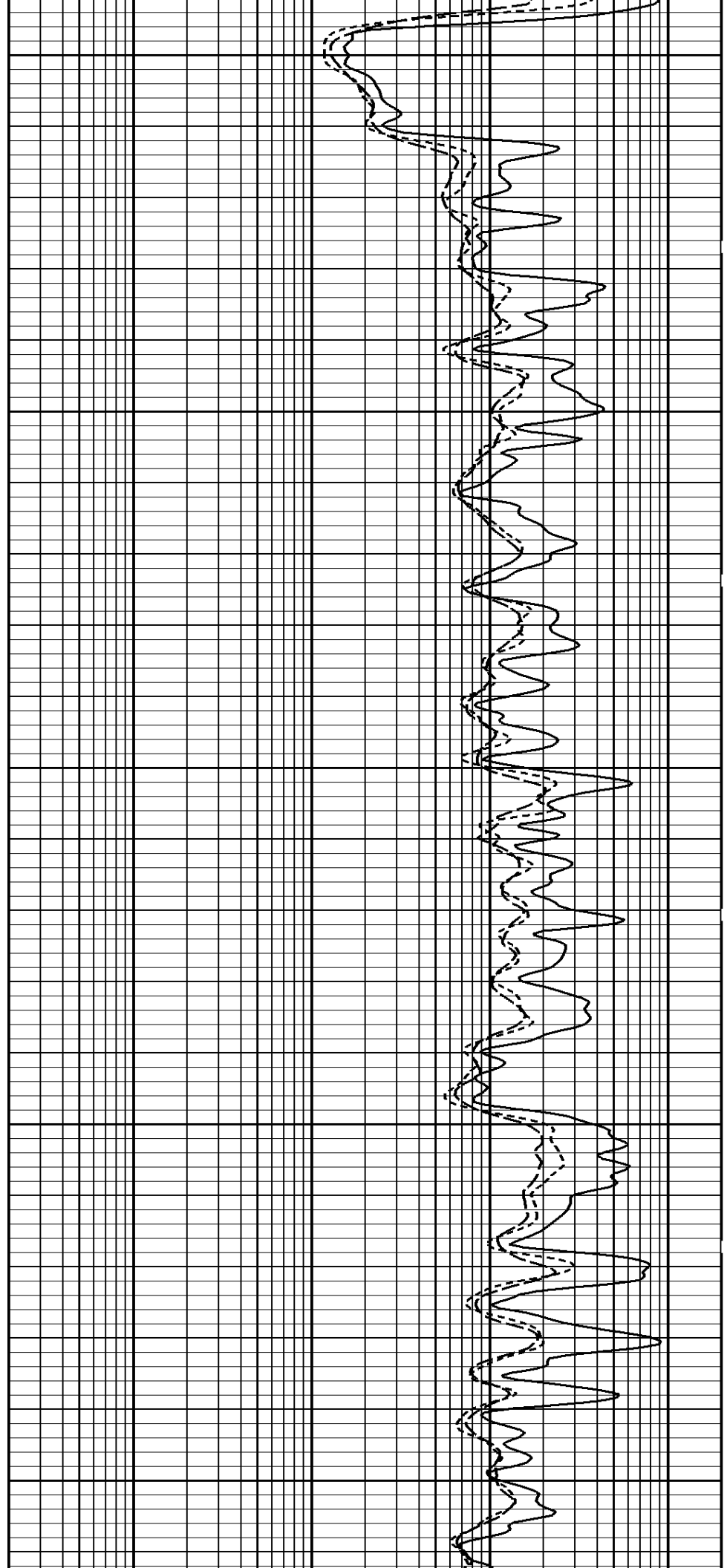


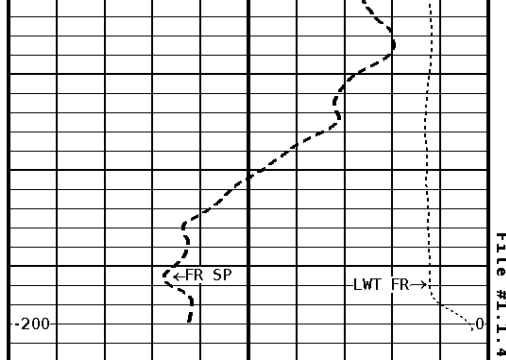


1200

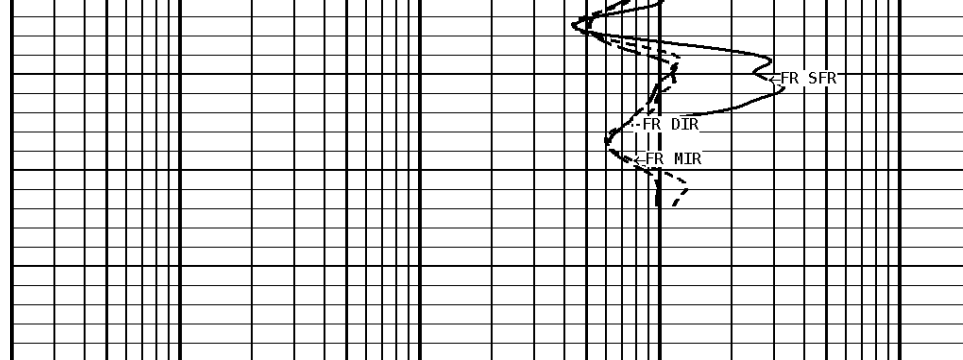
1300

1400





1443



1:240 REPEAT SECTION

GAMMA RAY API UNITS	
200 0	400 200
SPONTANEOUS POTENTIAL mV	
→	←20
TENSION LBS	
10000	0

DEEP INDUCTION OHMM	
0.2	2000.0
MEDIUM INDUCTION OHMM	
0.2	2000.0
SHALLOW FOCUSED RESISTIVITY OHMM	
0.2	2000.0

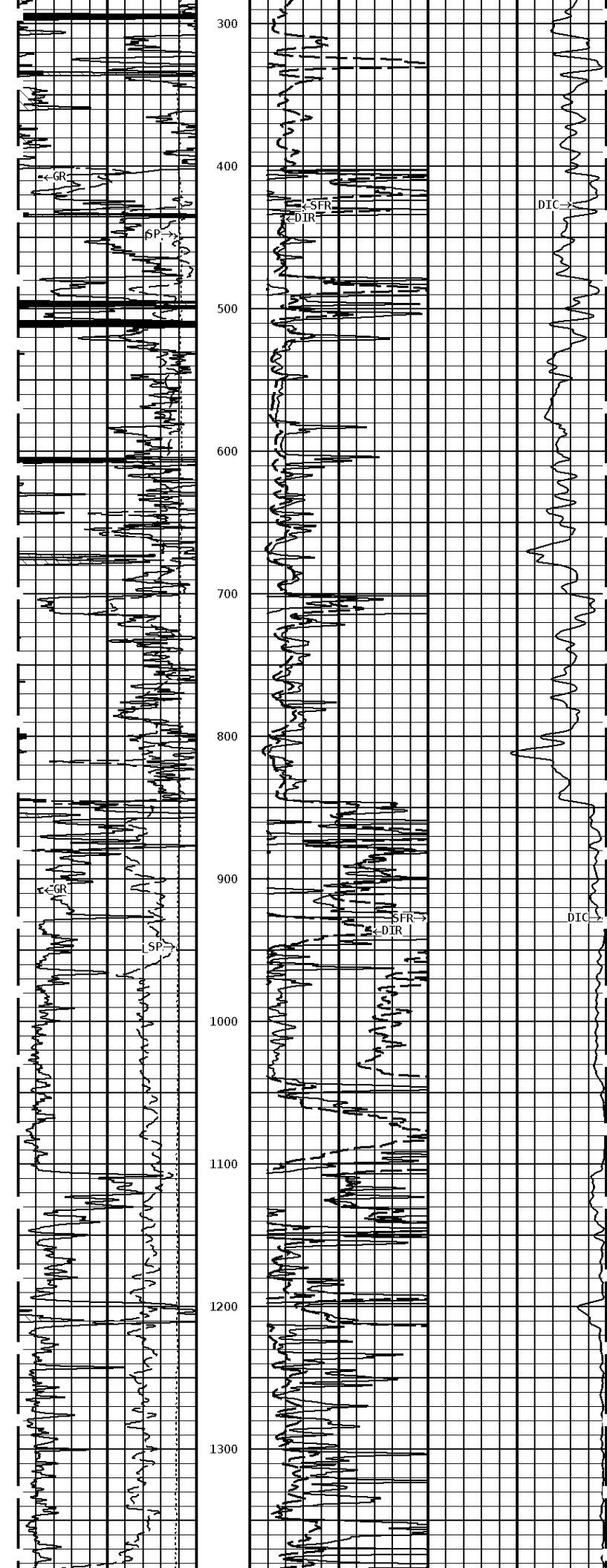
*** Borehole Zone Factors ***

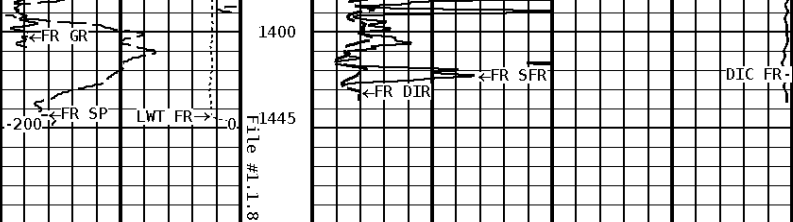
Zone 1 9999.0 to 0.0 Feet		
Drill Bit Size	_____	7.875 in
BHT Depth	_____	1450.000 ft
Borehole Temperature	_____	95.0 degF
Temperature Gradient	_____	1.00 DFHF
Resistivity Of Mud	_____	0.200 ohm/m
Standoff	_____	0.0
Resistivity Of Mud Temperature	_____	82.00 degF

*** Calibration Summary ***

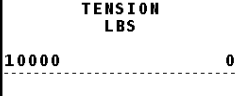
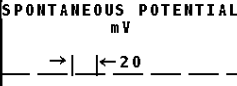
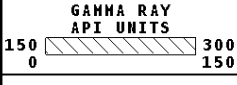
Shop Calibration GRT-B					
Performed : 25-Jan-2008			Time : 10:22		
Sensor Suite : GR-GR5			ID : GRT-BB-109		
	Measured	Units	Calibrated	Units	
GR	Background	Jig	Jig	GRAPI	
	48	318	175		

Shop Calibration PIT-CA					
Performed : 09-Mar-2010			Time : 11:08		
Sensor Suite : P-IND-T			ID : PIT-BA-20		
Medium					
	Measured		Calibrated		Units
	R	X	R	X	
Air	131850	129617	0.1	0.1	MMHOS
Zero	131066	131069	0.0	0.0	MMHOS
Reference	244028	243695	5000.0	5000.0	MMHOS
Loop	150861	170755	2667.8	984.9	MMHOS
Sonde Error			-0.1	1.7	MMHOS
Cond			5000.0	5000.0	MMHOS
Deep					
	Measured		Calibrated		Units
	R	X	R	X	
Air	129092	131615	0.1	-0.0	MMHOS
Zero	131075	131069	0.0	0.0	MMHOS





1:1200 MAIN SECTION



Company: RUNNING FOXES PETROLEUM, INC
 Well: DICKERSON #15-22 SWD
 Location: 125' FSL & 2180' FEL
 Logged: 2012-04-04
 K.B. Elev: 0.0