



**COMPLETION
& PRODUCTION
SERVICES CO.**

**MICRO
LOG**

Company LIBERTY OPERATIONS & COMPLETIONS
Well GREEN #1
Field LYND POOL
County ROOKS
State KANSAS

Company LIBERTY OPERATIONS & COMPLETIONS
Well GREEN #1
Field LYND POOL
County ROOKS State KANSAS

Location: API # : 15-163-24078-0000
1365' FNL & 1380' FWL
SEC 33 TWP 9S RGE 19W
Permanent Datum GROUND LEVEL Elevation 2225
Log Measured From KELLY BUSHING 5' A.G.L.
Drilling Measured From KELLY BUSHING
Elevation
K.B. 2230
D.F. 2228
G.L. 2225

Date	10/8/12
Run Number	THREE
Depth Driller	3780
Depth Logger	3790
Bottom Logged Interval	3788
Top Log Interval	3100
Casing Driller	8 5/8" @ 210
Casing Logger	210
Bit Size	7 7/8
Type Fluid in Hole	CHEMICAL MUD
Density / Viscosity	8.6/84
pH / Fluid Loss	8.0/16.0
Source of Sample	FLOWLINE
Rim @ Meas. Temp	.44 @ 67F
Rmf @ Meas. Temp	.33 @ 67F
Rmc @ Meas. Temp	.52 @ 67F
Source of Rmf / Rmc	MEASURED
Rim @ BHT	.25 @ 114F
Time Circulation Stopped	2 HOURS
Time Logger on Bottom	
Maximum Recorded Temperature	114F
Equipment Number	680
Location	HAYS, KS.
Recorded By	JASON CAPPELLUCCI
Witnessed By	TONY RICHARDSON

<<< Fold Here >>>

All interpretations are opinions based on inferences from electrical or other measurements and we cannot and do not guarantee the accuracy or correctness of any interpretation, and we shall not, except in the case of gross or willful negligence on our part, be liable or responsible for any loss, costs, damages, or expenses incurred or sustained by anyone resulting from any interpretation made by any of our officers, agents or employees. These interpretations are also subject to our general terms and conditions set out in our current Price Schedule.

Comments

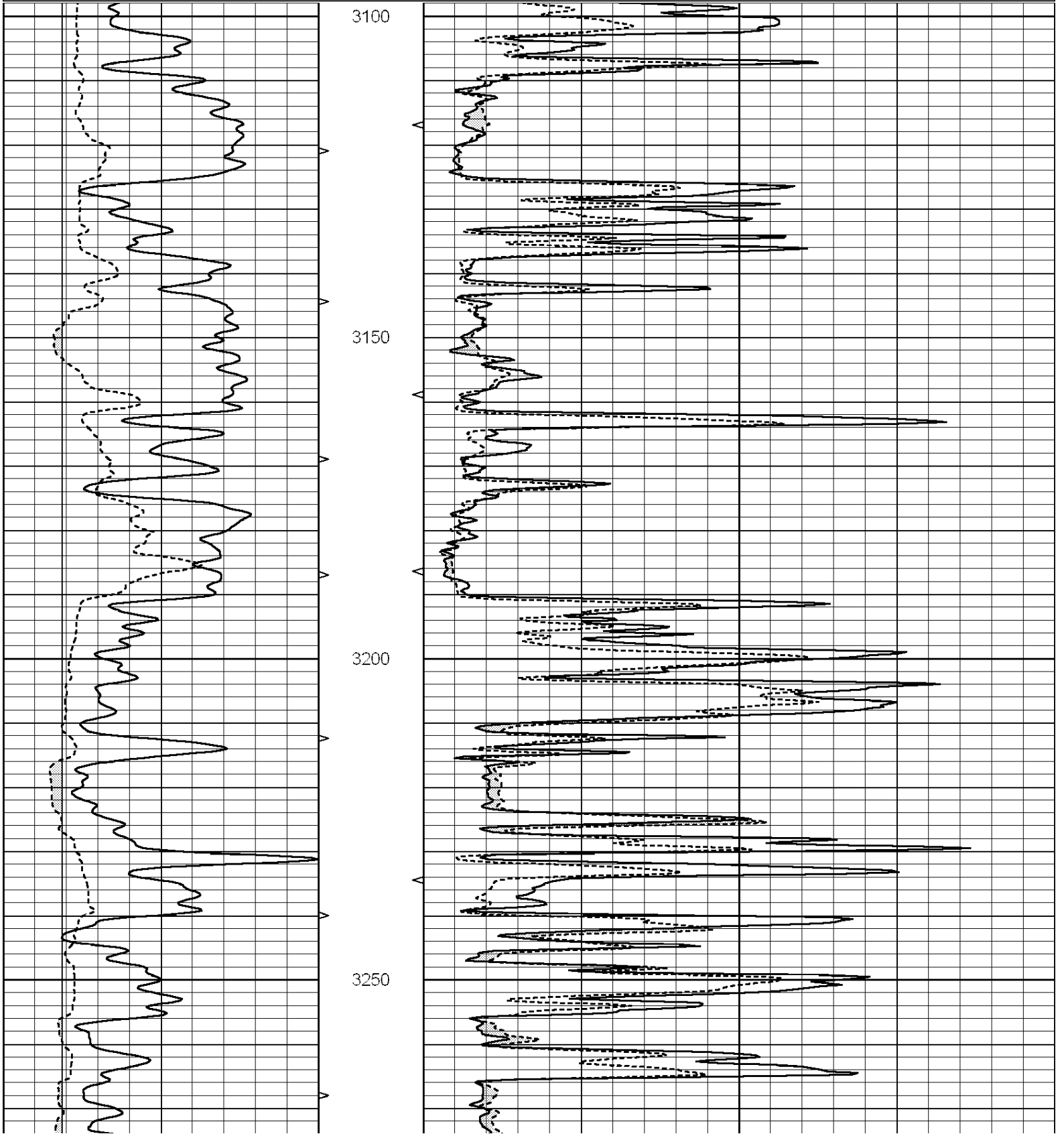
THANK YOU FOR USING SUPERIOR WELL SERVICE (785) 628-6395
DIRECTIONS
ZURICH, KS. - 1 W. - 1/4 S. - E. INTO

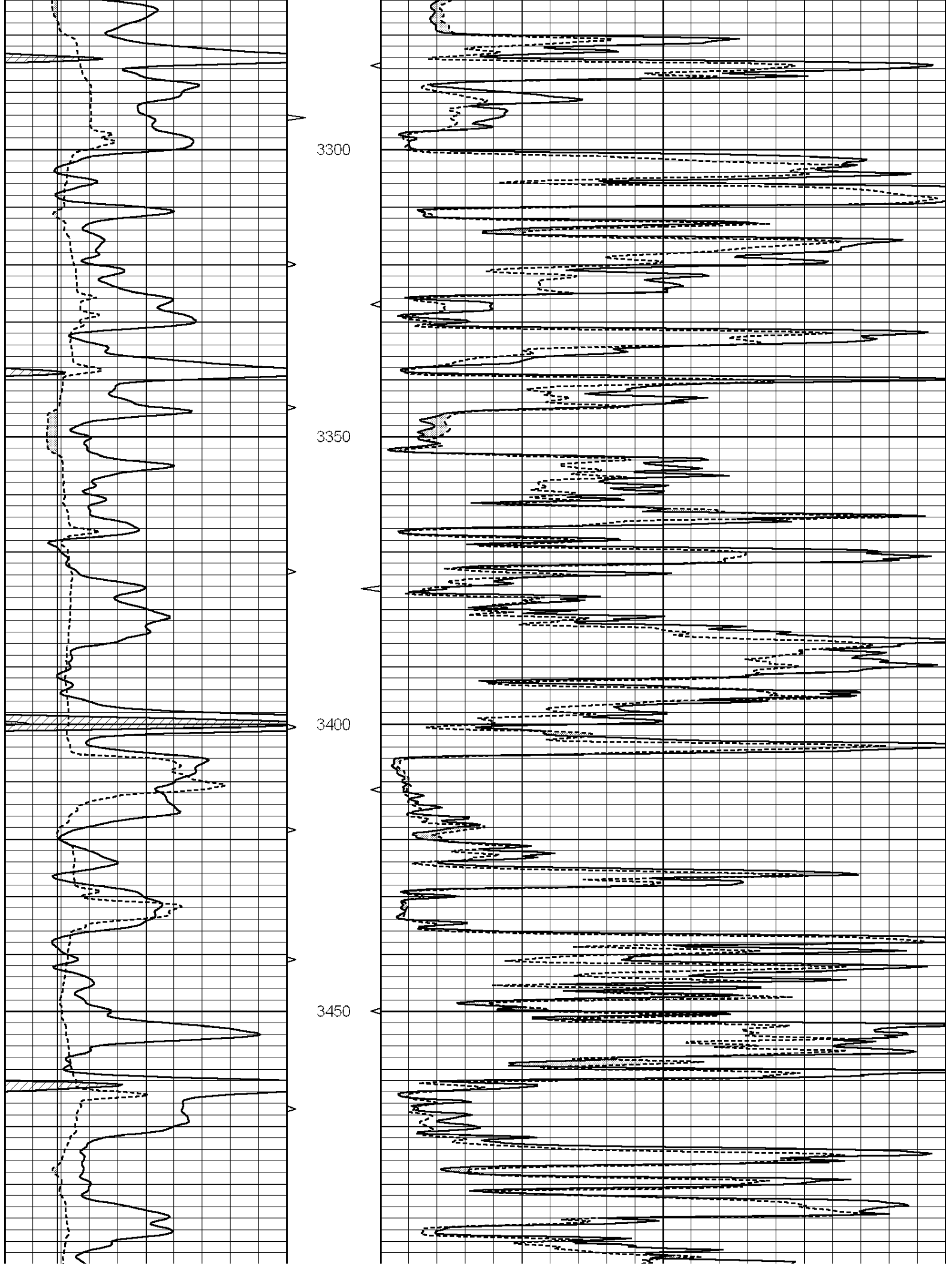


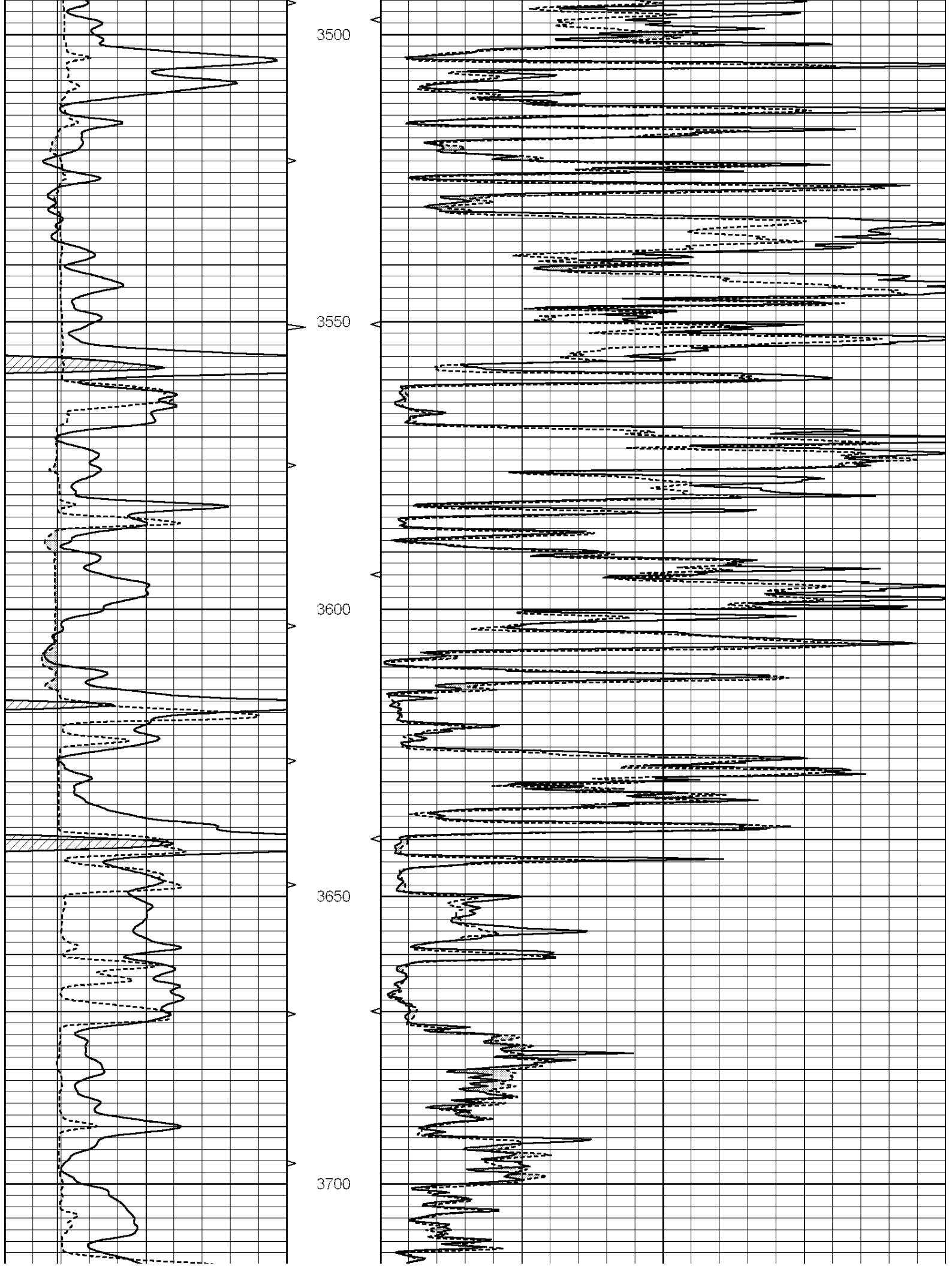
MAIN SECTION

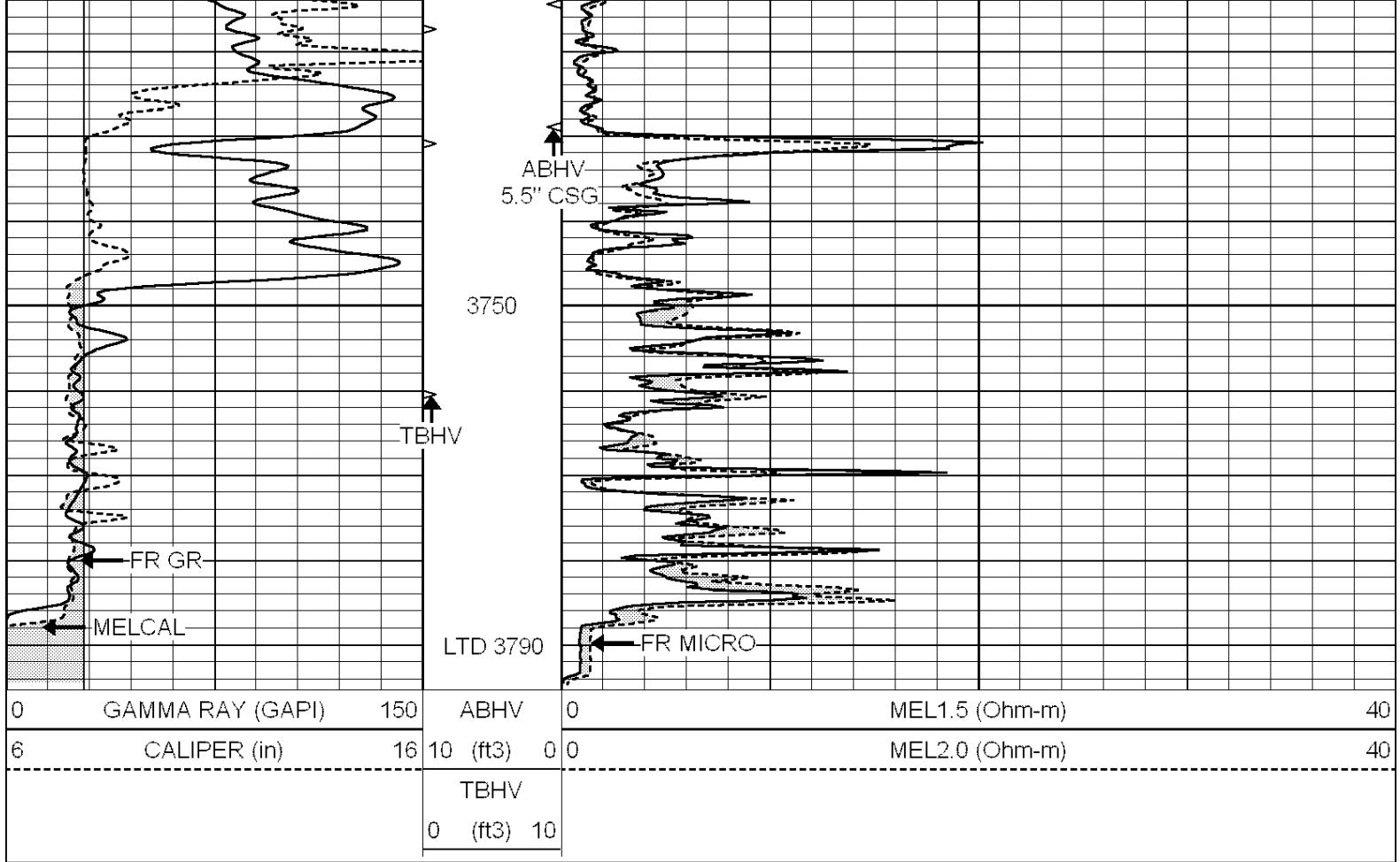
Database File: 009745pe.db
 Dataset Pathname: pass10.1
 Presentation Format: _micro
 Dataset Creation: Mon Oct 08 10:24:40 2012 by Calc Open-Cased 090629
 Charted by: Depth in Feet scaled 1:240

0	GAMMA RAY (GAPI)	150	ABHV	0	MEL1.5 (Ohm-m)	40
6	CALIPER (in)	16	10 (ft3)	0 0	MEL2.0 (Ohm-m)	40
			TBHV			
			0 (ft3)	10		





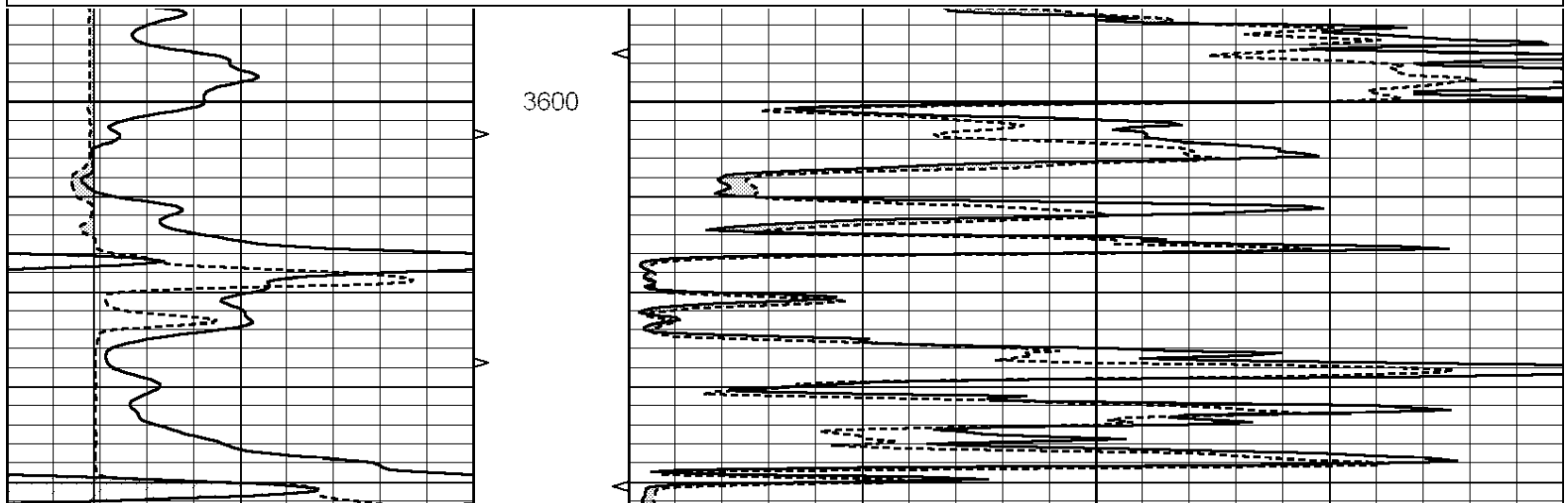


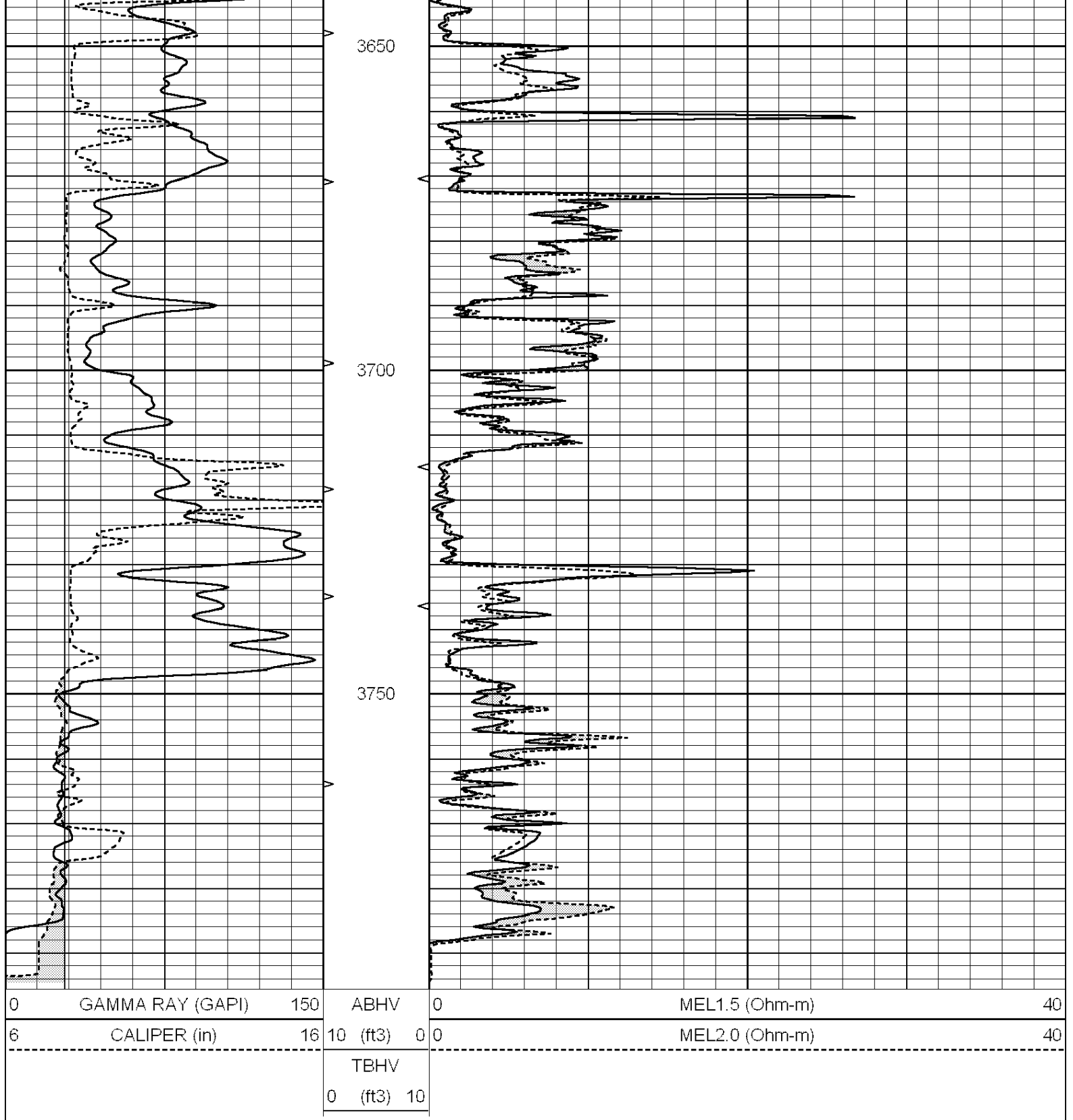


REPEAT SECTION

Database File: 009745pe.db
 Dataset Pathname: pass9.1
 Presentation Format: _micro
 Dataset Creation: Mon Oct 08 10:24:07 2012 by Calc Open-Cased 090629
 Charted by: Depth in Feet scaled 1:240

0	GAMMA RAY (GAPI)	150	ABHV	0	MEL1.5 (Ohm-m)	40
6	CALIPER (in)	16	10 (ft3)	0 0	MEL2.0 (Ohm-m)	40
			TBHV			
			0 (ft3)	10		





Calibration Report

Database File: 009745pe.db
 Dataset Pathname: pass10.1
 Dataset Creation: Mon Oct 08 10:24:40 2012 by Calc Open-Cased 090629

MICRO Calibration Report

Serial Number: MICRO6
 Tool Model: PROBE
 Performed: Thu Aug 16 14:43:41 2012

Caliper Calibration: Gain=6.253 Offset=-1.608

References	Low Cal	High Cal
Readings	5.800	13.000
	1.178	2.330
1.5" Calibration:	Gain=30.075	Offset=0.100
References	Low Cal	High Cal
Readings	0.000	20.000
	0.004	1.196
2" Calibration:	Gain=30.041	Offset=0.300
References	Low Cal	High Cal
Readings	0.000	20.000
	0.006	0.913
Gamma Ray Calibration Report		
Serial Number:	#8	
Tool Model:	OPEN	
Performed:	Mon Jun 13 16:56:43 2011	
Calibrator Value:	150.0	GAPI
Background Reading:	0.0	cps
Calibrator Reading:	175.0	cps
Sensitivity:	0.8371	GAPI/cps