



**MIDWEST SURVEYS**  
 LOGGING - PERFORATING - CONSULTING SERVICES  
 P.O. Box 68, Osawatomie, KS 66064  
 913 / 735 - 2128

**GAMMA RAY / NEUTRON / CCL**

File No.

Company **Laymon Oil II, LLC.**

Well **Alexander No. 97-12**

Field **Vernon**

County **Woodson**

State **Kansas**

Location **882 FSL & 1782' FEL**

**SW-NE-SWSE**

Other Services

Perforate

Sec. 2 Twp. 24S Rge. 16E

Permanent Datum **GL** Elevation **NA**

Log Measured From **GL** K.B. NA

Drilling Measured From **GL** D.F. NA

Date **11-13-2012** Elevation **GL**

Run Number **One**

Depth Driller **1120.0**

Bottom Logged Interval **1096.0**

Top Log Interval **200.0**

Fluid Level **Full**

Type Fluid **Water**

Density / Viscosity **NA**

Salinity - PPM Cl **NA**

Max Recorded Temp **NA**

Estimated Cement Top **0.0**

Equipment No. **102** **Oswatimie**

Recorded By **Steve Windisch**

Missused By **Mike Laymon**

BORE-HOLE RECORD

Run No. **BIT** **FROM** **TO** **SIZE** **WG#** **FROM** **TO**

**One** **12.25"** **40.0** **0.0** **8.625"** **0.0** **40.0**

**Two** **6.00"** **40.0** **1120.0** **2.875"** **0.0** **1110.0**

CASING RECORD

TO **40.0**

FROM **1110.0**

TO **40.0**

FROM **1110.0**

TO **40.0**

FROM **1110.0**

API # 15-207-28,391

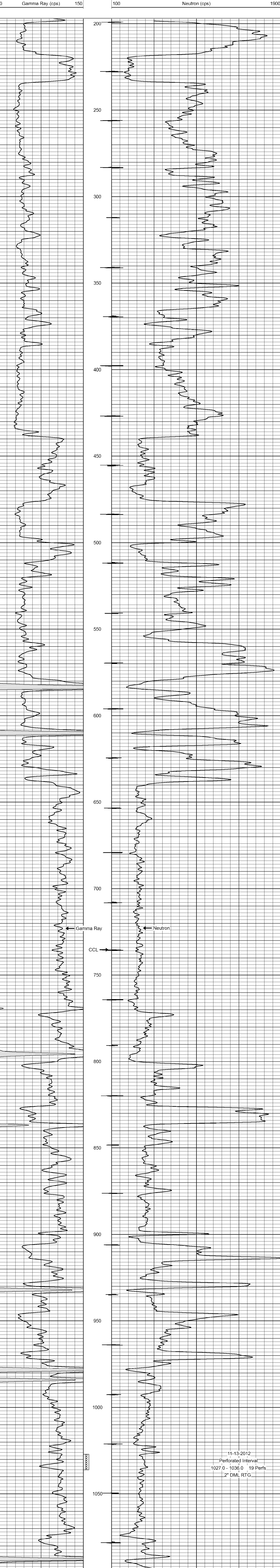
<<< Fold Here >>>

All interpretations are opinions based on inferences from electrical or other measurements and we cannot and do not guarantee the accuracy or correctness of any interpretation, and we shall not, except in the case of gross or willful negligence on our part, be liable or responsible for any loss, costs, damages, or expenses incurred or sustained by anyone resulting from any interpretation made by any of our officers, agents or employees. These interpretations are also subject to our general terms and conditions set out in our current Price Schedule.

Comments

Drilling Contractor :  
 Laymon Oil II, LLC

Database File: alexander97.db  
 Dataset Pathname: pass1  
 Presentation Format: gr-n-ccl  
 Dataset Creation: Tue Nov 13 10:43:27 2012 by Log SCH 111116  
 Charted by: Depth in Feet scaled 1:240



Gamma Ray (cps) scale: 0 to 150  
 Neutron (cps) scale: 100 to 1900