



VERDE OIL COMPANY
 CAMPBELL #1-75-125
 HUMBOLDT - CHANUTE
 ALLEN
 KANSAS

GAMMA RAY
 NEUTRON
 COMPLETION LOG

| | | | | |
|------------------------|------------------------|-----------|---------------------|----------------|
| Company | VERDE OIL COMPANY | Location: | 1155 FSL & 650' FEL | Other Services |
| Well | CAMPBELL #1-75-125 | AP# : | 15-001-30473-00-00 | |
| Field | HUMBOLDT - CHANUTE | County | ALLEN | State |
| County | ALLEN | State | KANSAS | |
| State | KANSAS | | | |
| Permanent Datum | SEC 29 TWP 26S RGE 20E | Elevation | 1009 FEET | |
| Log Measured From | GL | K.F. | GL | Elevation |
| Drilling Measured From | GL | D.L. | GL | 1009 FEET |
| Date | 8-14-12 | | | |
| Run Number | 1 NW | | | |
| Depth Driller | 900' | | | |
| Depth Logger | 889.8' | | | |
| Top Log Interval | 0 | | | |
| Bottom Log Interval | 889.8' | | | |
| Fluid Level | FULL | | | |
| Type Fluid | WATER | | | |
| Production Casing | 2 7/8" @ TD | | | |
| Max. Recorded Temp. | | | | |
| Estimated Cement Top | | | | |
| Calculated Cement Top | | | | |
| Amount & Type Cement | | | | |
| Amount & Type Admix | | | | |
| Dripping Contractor | | | | |
| Equipment Number | 103 | | | |
| Location | SOLOMON, B. | | | |
| Recorded By | DALE, J. | | | |
| Witnessed By | | | | |

<<< Fold Here >>>

All interpretations are opinions based on inferences from electrical or other measurements and we cannot and do not guarantee the accuracy or correctness of any interpretation, and we shall not, except in the case of gross or willful negligence on our part, be liable or responsible for any loss, costs, damages, or expenses incurred or sustained by anyone resulting from any interpretation made by any of our officers, agents or employees. These interpretations are also subject to our general terms and conditions set out in our current Price Schedule.

Comments

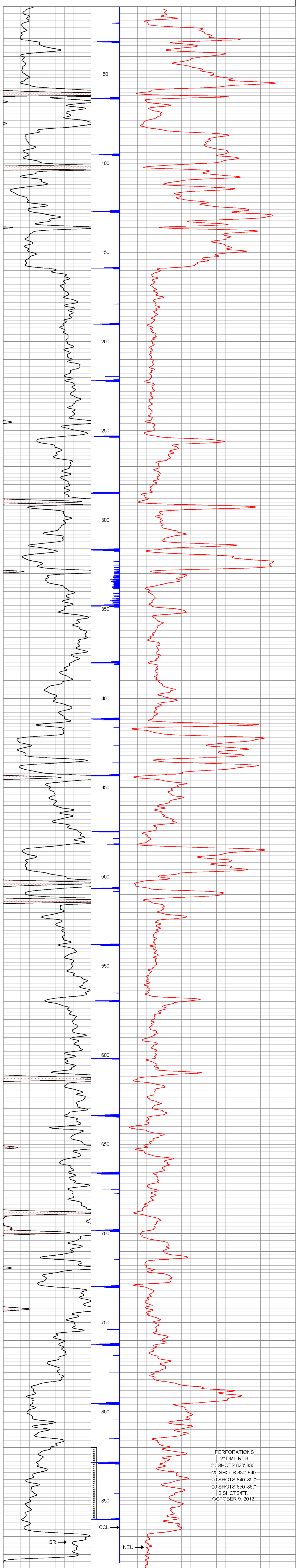
THANK YOU

| Sensor | Offset (ft) | Schematic | Description | Len (ft) | OD (in) | Wt (lb) |
|--------|-------------|-----------|---|----------|---------|---------|
| GR | 7.61 | | GR-TITAN_169 (TIT169_001) Titan 1 11/16" Gamma Ray | 4.75 | 1.69 | 20.00 |
| CCL | 5.05 | | CCL-TITAN_169 (TIT169) Titan 1 11/16" Logging CCL | 1.83 | 1.69 | 7.50 |
| NEU | 0.63 | | NEU-TITAN (TIT801) TITAN 1 11/16" Neutron | 4.33 | 1.69 | 25.00 |

Dataset: campbell #-75-125.db; field/well/run1/pass1
 Total Length: 10.92 ft
 Total Weight: 52.50 lb
 O.D.: 1.69 in

Database File: f:\verde oil company\campbell #-75-125\campbell #-75-125.db
 Dataset Pathname: pass1
 Presentation Format: gr-n-ccl
 Dataset Creation: Tue Aug 14 08:53:45 2012 by Log SCH 110930
 Charted by: Depth in Feet scaled 1:240

150 gr 300 3 CCL.05 150 NEU (cps) 1500



PERFORATIONS
 2" DML-RTG
 20 SHOTS 820'-830'
 20 SHOTS 830'-840'
 20 SHOTS 840'-850'
 20 SHOTS 850'-860'
 2 SHOTS/FT.
 OCTOBER 9, 2012

150 gr 300 3 CCL.05 150 NEU (cps) 1500

