



MIDWEST SURVEYS
 LOGGING - PERFORATING - CONSULTING SERVICES
 P.O. Box 66, Osawatomie, KS 66064
 913 / 755 - 2128

GAMMA RAY / NEUTRON / CCL

File No. _____

Company **RJ Enterprises**

Well **Ware No. 25-1**

Field **Bush City Shoestring**

County **Anderson** State **Kansas**

Location **3242 FSL & 1166 FEL**

Other Services **Perforate**

Sec. **15** Twp. **21S** Rge. **20E**

Perforated Datum **GL** Elevation **NA**

Log Measured From **GL** Elevation **NA**

Drilling Measured From **GL** Elevation **NA**

Date **11-08-2012**

Run Number **One**

Depth Driller **843.3**

Depth Logger **843.3**

Bottom Logged Interval **842.3**

Top Log Interval **20.0**

Fluid Level **Full**

Type Fluid **Water**

Density / Viscosity **NA**

Salinity - PPM Cl **NA**

Max Recorded Temp **NA**

Estimated Cement Top **0.0**

Equipment No. **104** Location **Osawatomie**

Recorded By **Gary Mindisch**

Witnessed By **Jason Kent**

BOREHOLE RECORD				CASING RECORD			
RUN	BIT	FROM	TO	SIZE	WGT	FROM	TO
One	9.875"	0.0	20.0	7.00"	0.0	0.0	20.0
Two	5.825"	20.0	850.0	2.875"	0.0	0.0	844.0

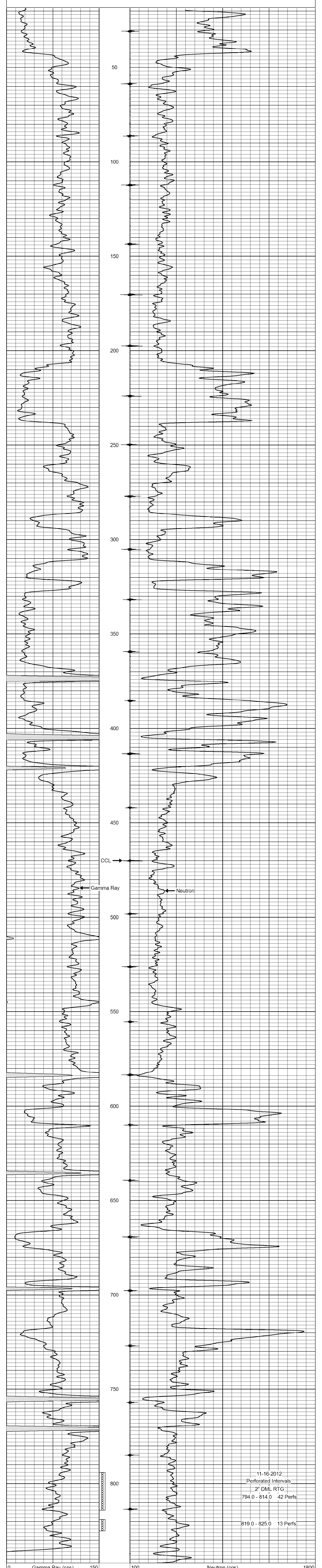
<<< Fold Here >>>

All interpretations are opinions based on inferences from electrical or other measurements and we cannot and do not guarantee the accuracy or correctness of any interpretation, and we shall not, except in the case of gross or willful negligence on our part, be liable or responsible for any loss, costs, damages, or expenses incurred or sustained by anyone resulting from any interpretation made by any of our officers, agents or employees. These interpretations are also subject to our general terms and conditions set out in our current Price Schedule.

Comments

Drilling Contractor :
RJ Enterprises

Database File: ware25i.db
 Dataset Pathname: pass1
 Presentation Format: gr-n-ccl
 Dataset Creation: Thu Nov 08 12:10:04 2012 by Log SCH 111116
 Charted by: Depth in Feet scaled 1:240



11-16-2012
 Perforated Intervals
 2" DML RTG
 794.0 - 814.0 42 Perfs
 819.0 - 825.0 13 Perfs