



**MIDWEST SURVEYS**  
 LOGGING - PERFORATING - CONSULTING SERVICES  
 P.O. Box 66, Osawatomie, KS 66064  
 913 / 755 - 2128

**GAMMA RAY / NEUTRON / CCL**

File No. \_\_\_\_\_

Company **RJ Enterprises**  
 Well **Ware No. 26-1**  
 Field **Bush City Shoestring**  
 County **Anderson** State **Kansas**

Location **3643 FSL & 1152 FEL**  
**NW-NW-SENE**

Sec. **15** Twp. **21S** Rge. **20E**  
 Permit/Datum **GL** Elevation **NA**  
 Log Measured From **GL**  
 Drilling Measured From **GL**

Date **11-08-2012**  
 Run Number **One**  
 Depth Driller **849.0**  
 Depth Logger **842.0**  
 Bottom Logged Interval **841.0**  
 Top Log Interval **20.0**  
 Fluid Level **Full**

Type Fluid **Water**  
 Density / Viscosity **NA**  
 Salinity - PPM Cl **NA**  
 Max Recorded Temp **NA**  
 Estimated Cement Top **0.0**  
 Equipment No. **104** Location **Osawatomie**  
 Reported By **Gary Mindes**  
 Witnessed By **Jason Kent**

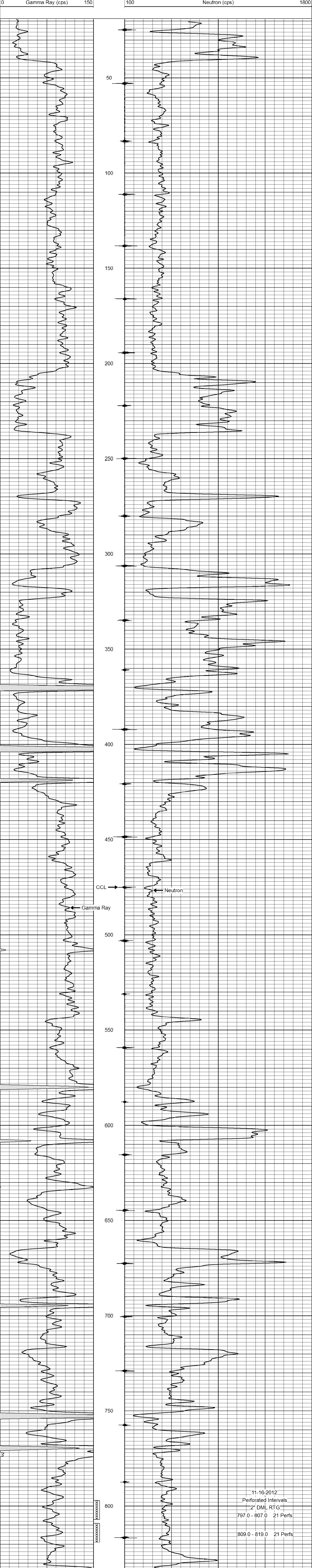
BOREHOLE RECORD				CASING RECORD			
Run	BIT	FROM	TO	SIZE	WGT.	FROM	TO
One	9.875"	0.0	20.0	7.00"	0.0	0.0	20.0
Two	5.825"	20.0	849.0	2.875"	0.0	0.0	843.6

<<< Fold Here >>>  
 All interpretations are opinions based on inferences from electrical or other measurements and we cannot and do not guarantee the accuracy or correctness of any interpretation, and we shall not, except in the case of gross or willful negligence on our part, be liable or responsible for any loss, costs, damages, or expenses incurred or sustained by anyone resulting from any interpretation made by any of our officers, agents or employees. These interpretations are also subject to our general terms and conditions set out in our current Price Schedule.

Comments

Drilling Contractor :  
**RJ Enterprises**

Database File: **ware26i.db**  
 Dataset Pathname: **pass1**  
 Presentation Format: **gr-n-ccl**  
 Dataset Creation: **Thu Nov 08 12:51:19 2012 by Log SCH 111116**  
 Charted by: **Depth in Feet scaled 1:240**



11-16-2012  
 Perforated Intervals  
 2" DML RTG  
 797.0 - 807.0 21 Perfs  
 809.0 - 819.0 21 Perfs