



**COMPLETION
& PRODUCTION
SERVICES CO.**

**DUAL
INDUCTION
LOG**

Company DREILING OIL, INC.
Well THOMPSON TRUST #1-1
Field
County OSBORNE State KANSAS

Company DREILING OIL, INC.
Well THOMPSON TRUST #1-1
Field
County OSBORNE
State KANSAS

Location: API #: 15-141-20449-0000
990' FNL & 2310' FWL
SE - NE - NW
SEC 1 TWP 9S RGE 12W
Permanent Datum GROUND LEVEL Elevation 1868
Log Measured From KELLY BUSHING 8' A.G.L.
Drilling Measured From KELLY BUSHING
Other Services
CDL/CNL
MEL
Elevation
K.B. 1876
D.F. 1874
G.L. 1868

Date	7-3-12		
Run Number	ONE		
Depth Driller	3325		
Depth Logger	3324		
Bottom Logged Interval	3322		
Top Log Interval	0		
Casing Driller	222		
Casing Logger	221		
Bit Size	7.875		
Type Fluid in Hole	STAROCH MUD	CHLORIDES: 5,000 ppm	
Density / Viscosity	9.3 / 50		
pH / Fluid Loss	9.5 / 8.8		
Source of Sample	FLOWLINE		
Rim @ Meas. Temp	0.60 @ 92F		
Rmf @ Meas. Temp	0.45 @ 92F		
Rmc @ Meas. Temp	0.72 @ 92F		
Source of Rmf / Rmc	MEASURED		
Rim @ BHT	0.50 @ 110F		
Time Circulation Stopped	4 HOURS		
Time Logger on Bottom			
Maximum Recorded Temperature	110F		
Equipment Number	860		
Location	HAYS, KS.		
Recorded By	JEFF GRONEWEG		TERRY PIESKER
Witnessed By	BILL REE		

<<< Fold Here >>>

All interpretations are opinions based on inferences from electrical or other measurements and we cannot and do not guarantee the accuracy or correctness of any interpretation, and we shall not, except in the case of gross or willful negligence on our part, be liable or responsible for any loss, costs, damages, or expenses incurred or sustained by anyone resulting from any interpretation made by any of our officers, agents or employees. These interpretations are also subject to our general terms and conditions set out in our current Price Schedule.

Comments

SUPERIOR WELL SERVICES
785-628-6395
THANK YOU FOR YOUR BUSINESS
DIRECTIONS: LUCAS, KS - NORTH ON BLACKTOP ON WEST SIDE OF TOWN 17 MILES
TO RD 190 - 4 MILES WEST TO T IN RD - 1 MILE NORTH - WEST INTO

0 Gamma Ray (GAPI) 150

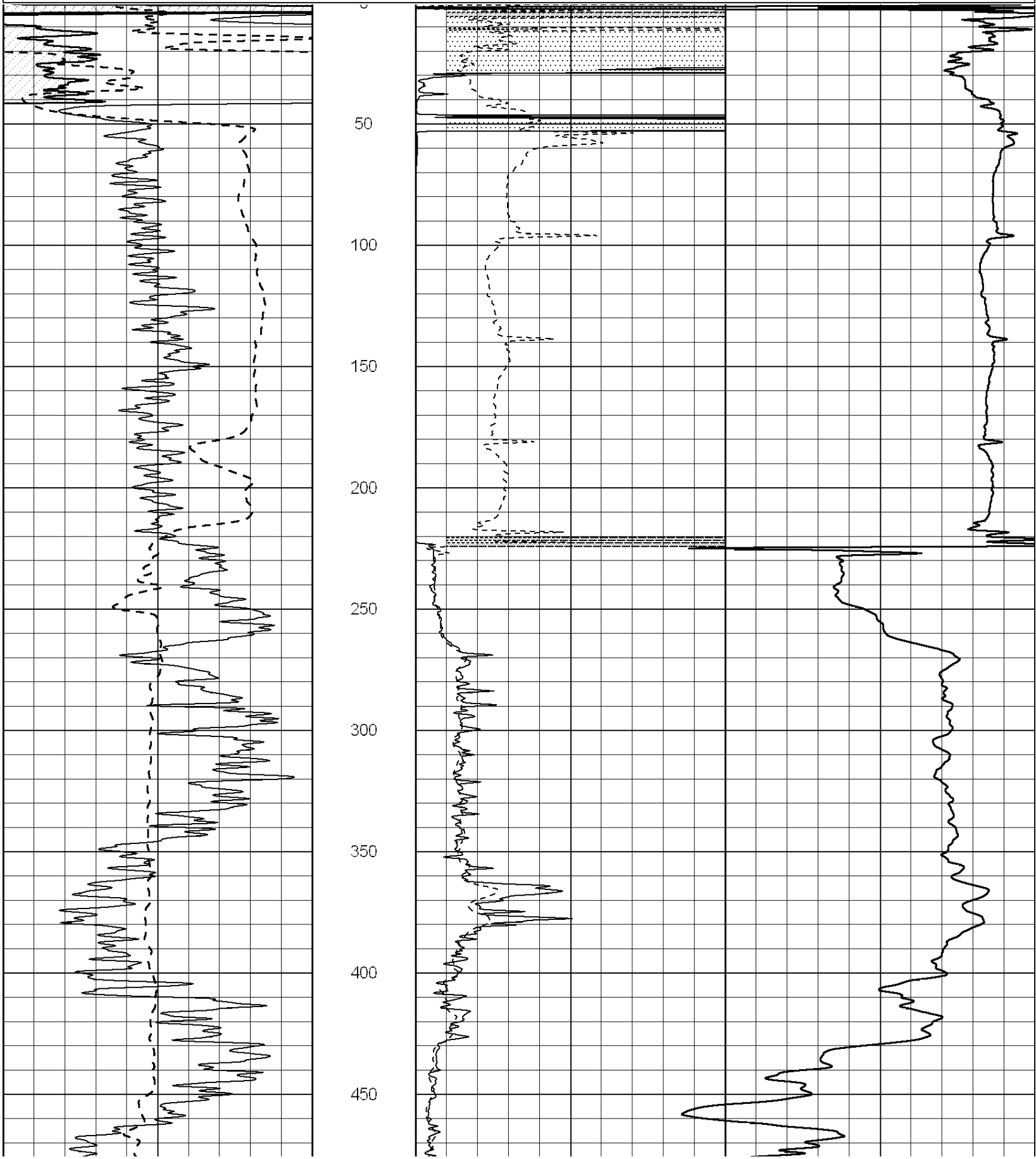
0 RLL3 (Ohm-m) 50

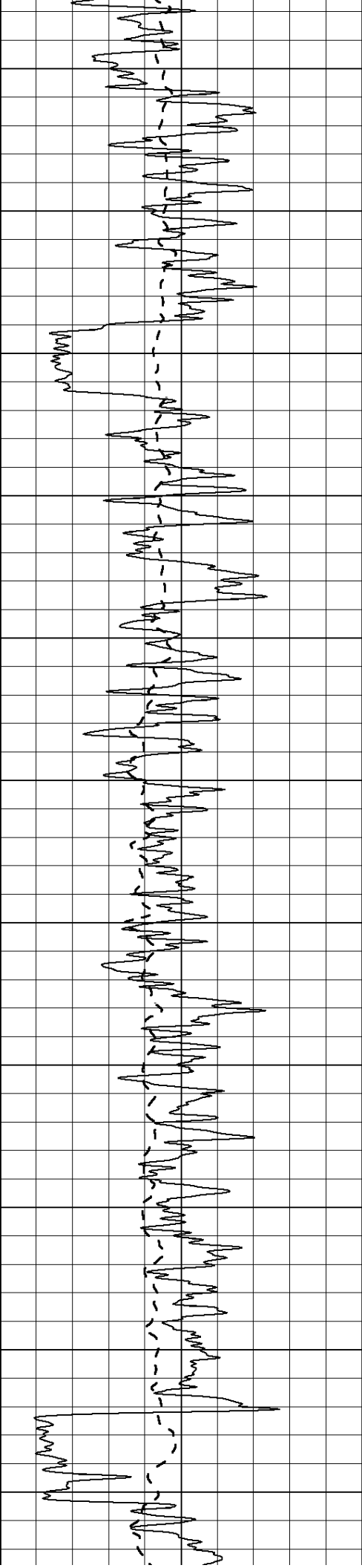
0 Deep Induction (Ohm-m) 50

1000 CILD (mmho/m) 0

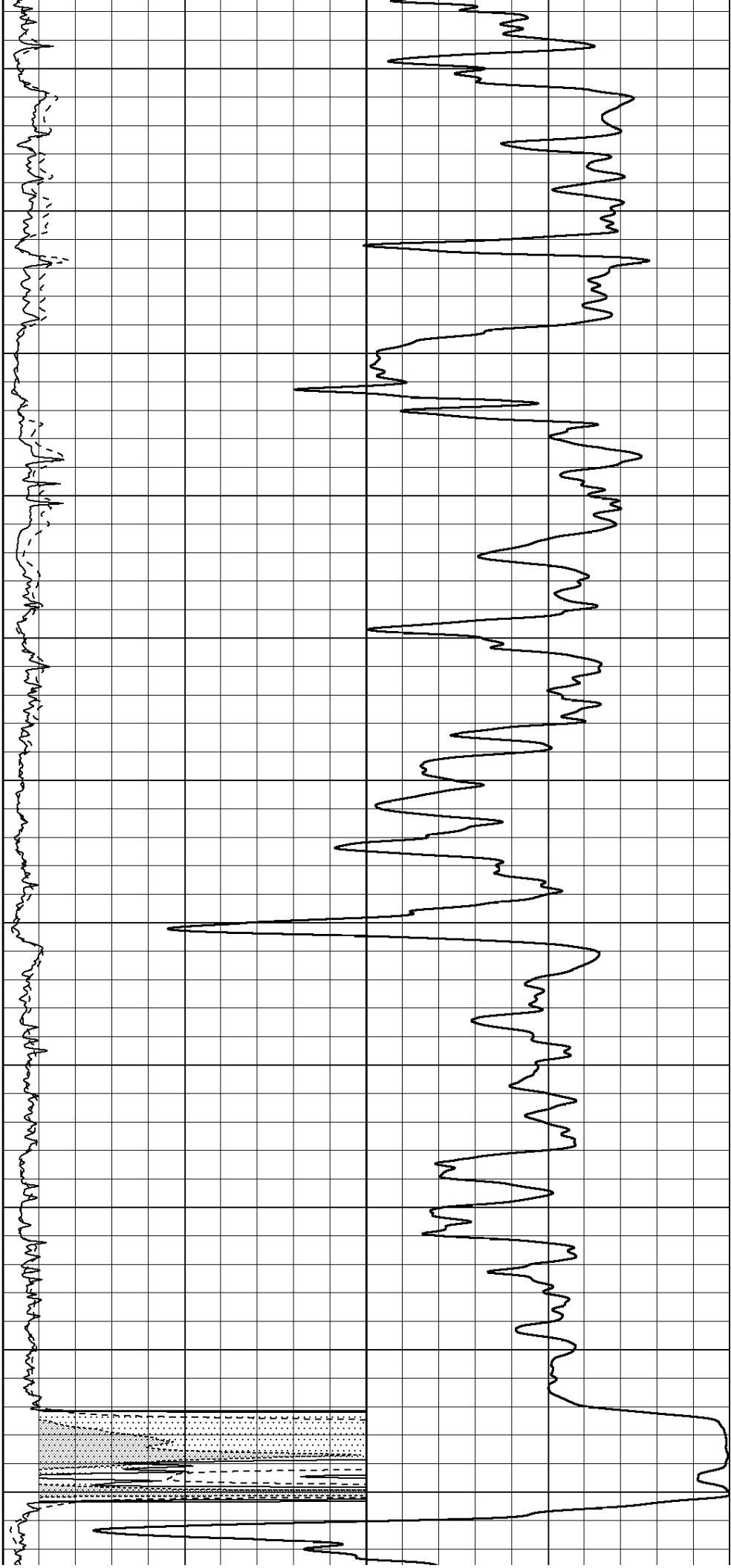
50 RILD X10 (Ohm-m) 500

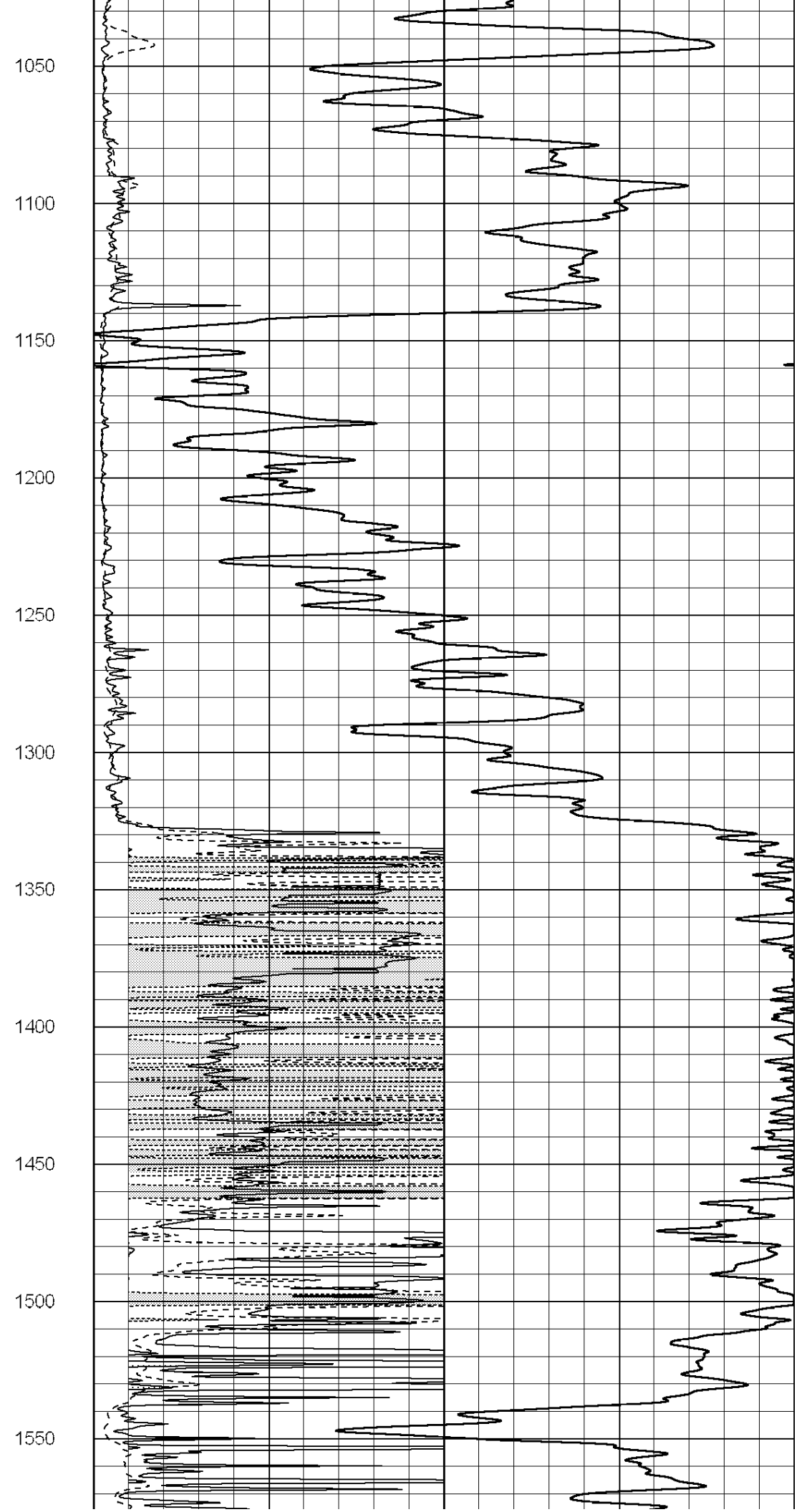
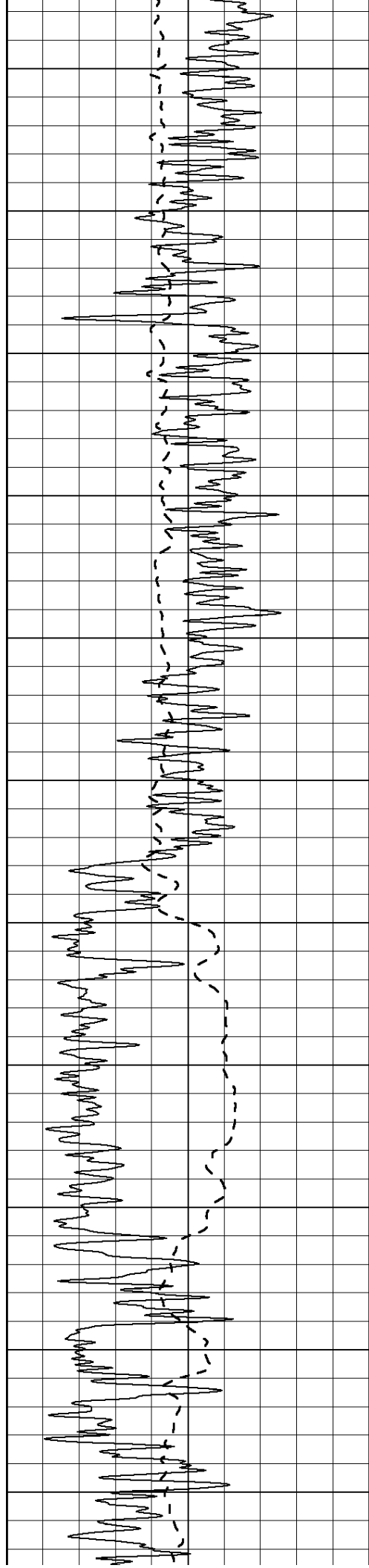
50 RLL3 X10 (Ohm-m) 500



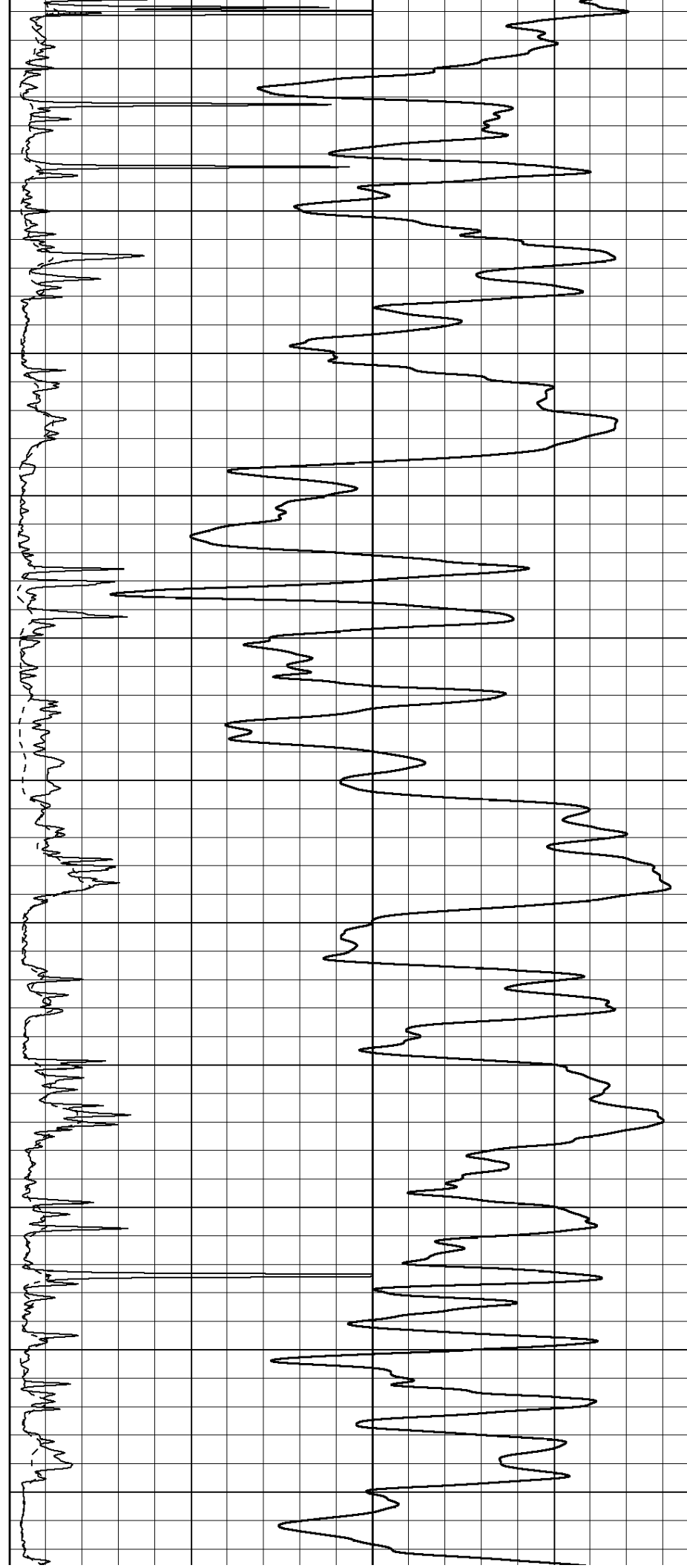
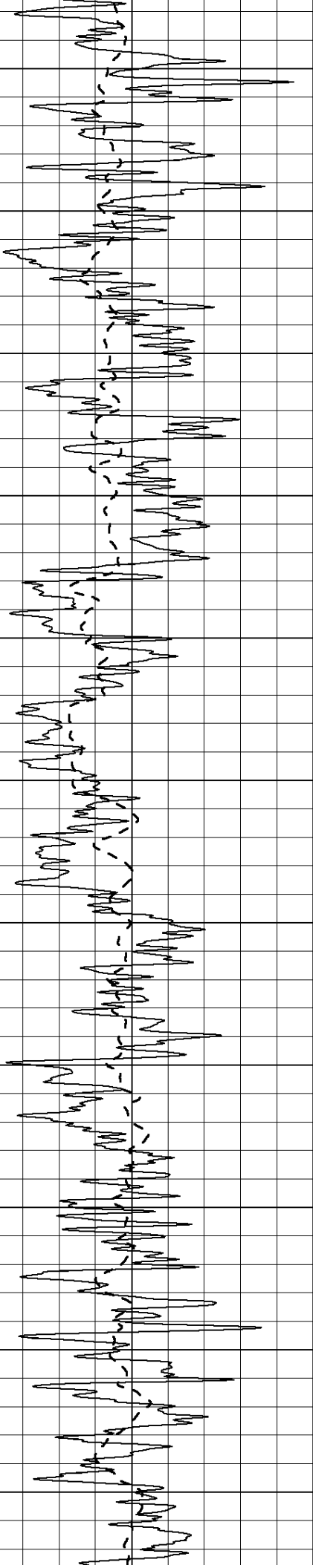


500
550
600
650
700
750
800
850
900
950
1000

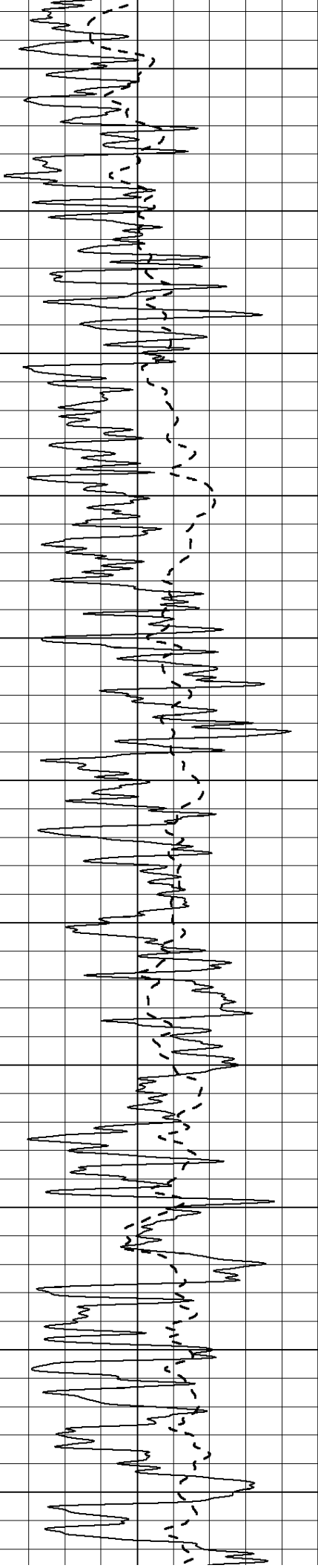
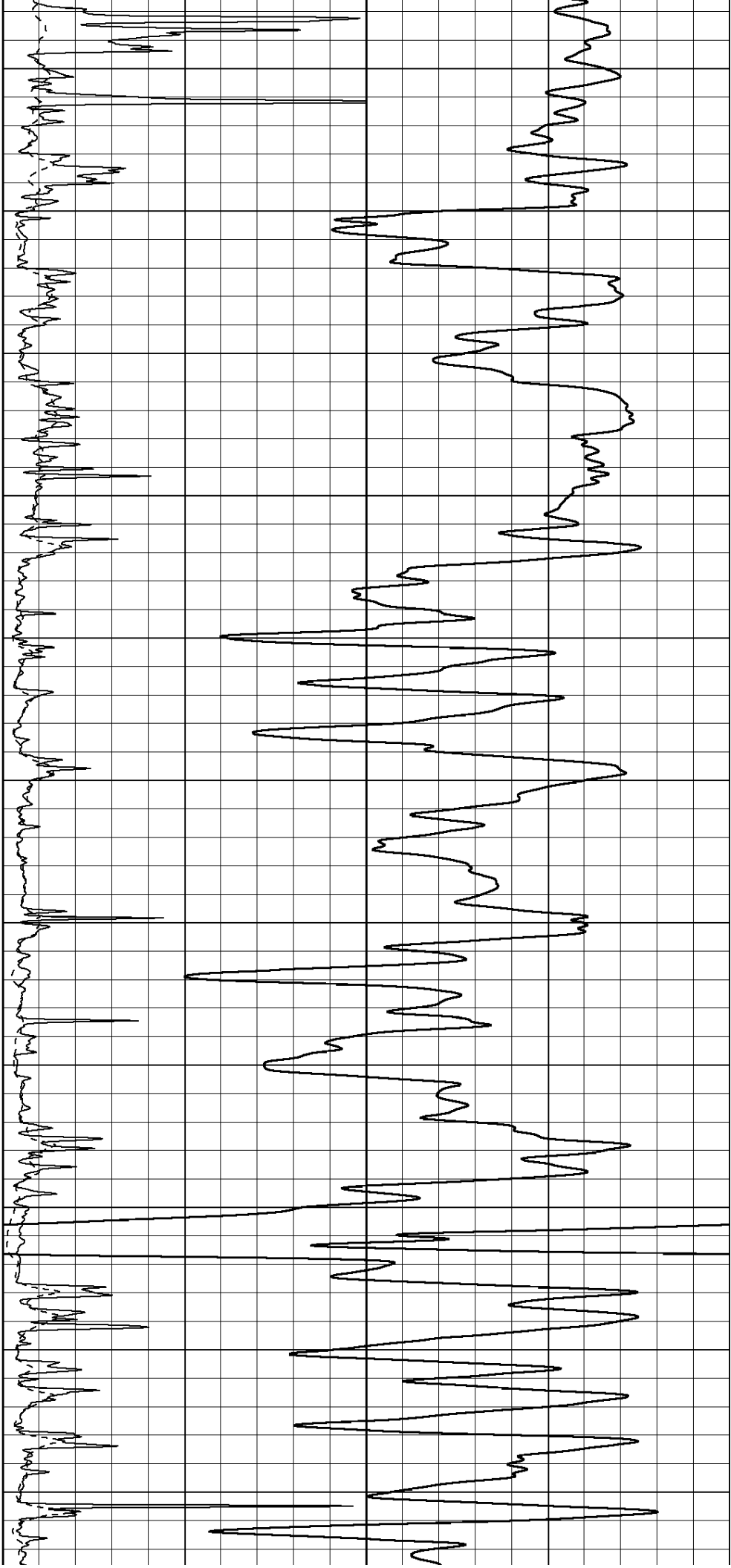


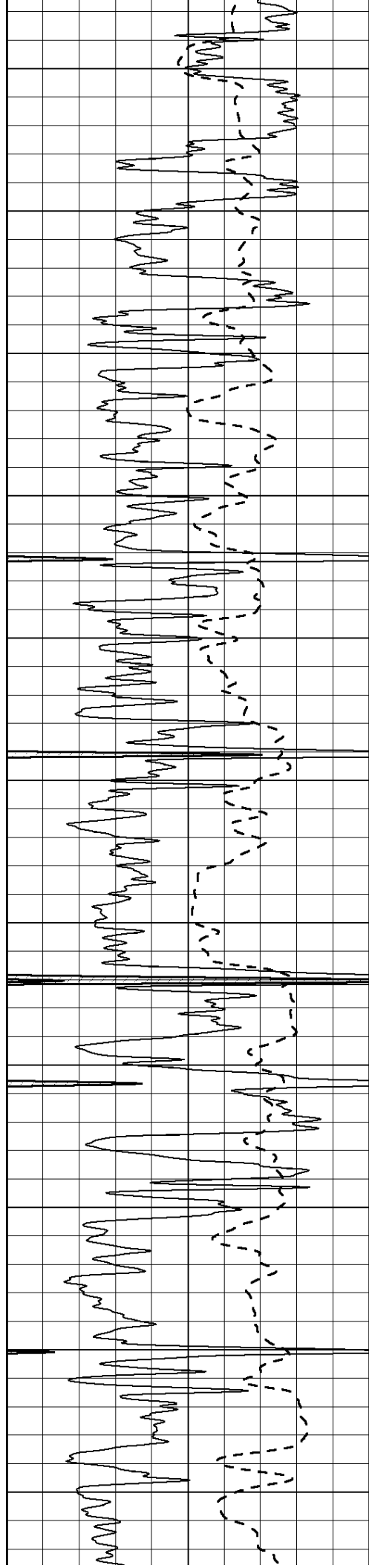


1600
1650
1700
1750
1800
1850
1900
1950
2000
2050
2100

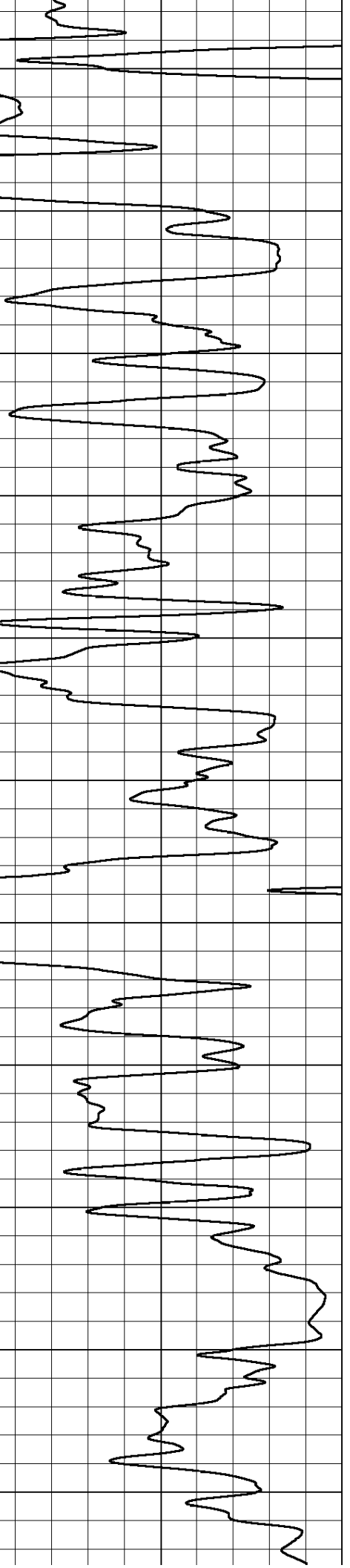
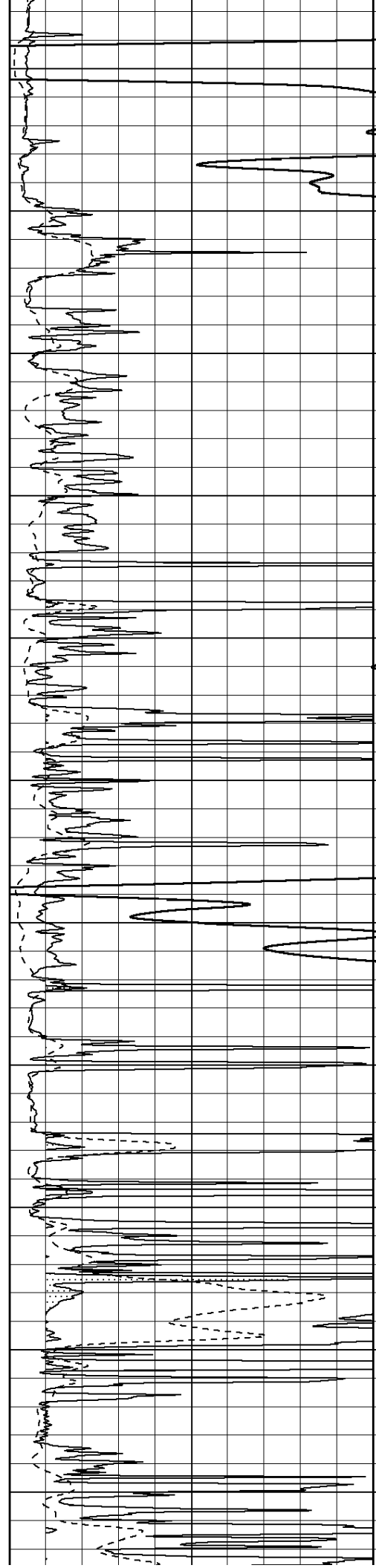


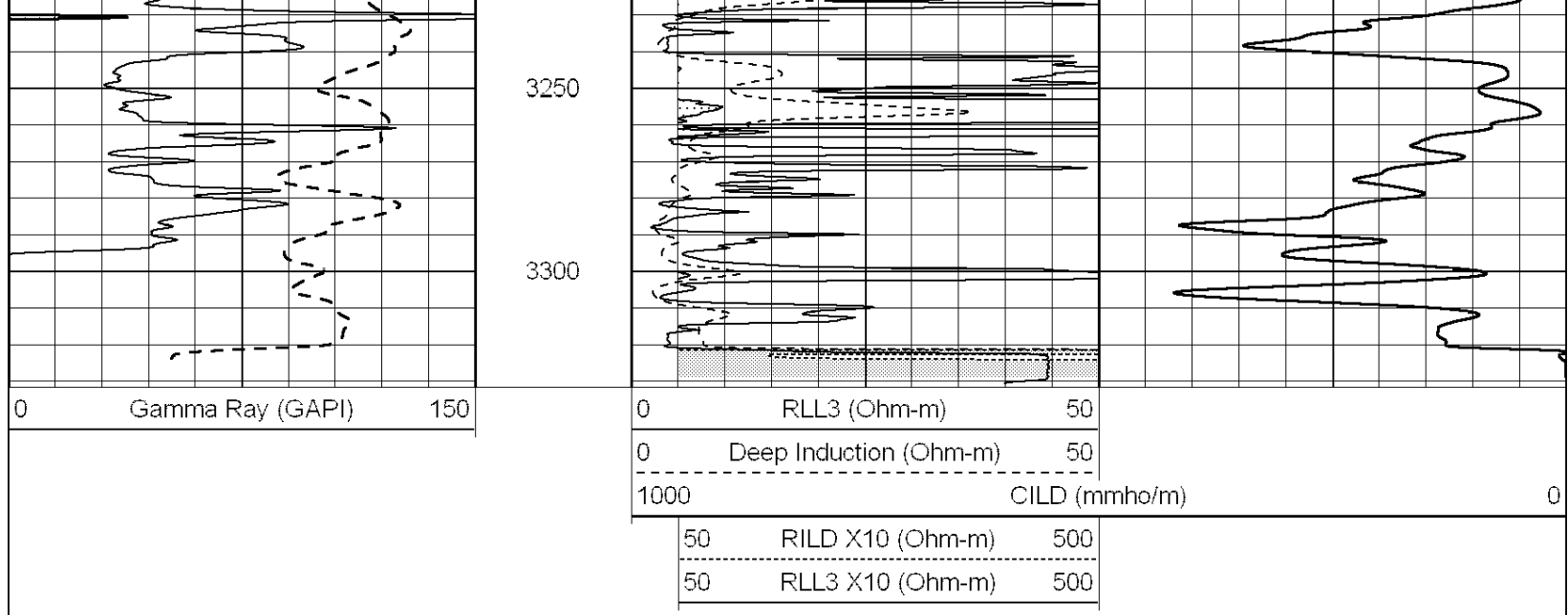
2150
2200
2250
2300
2350
2400
2450
2500
2550
2600
2650





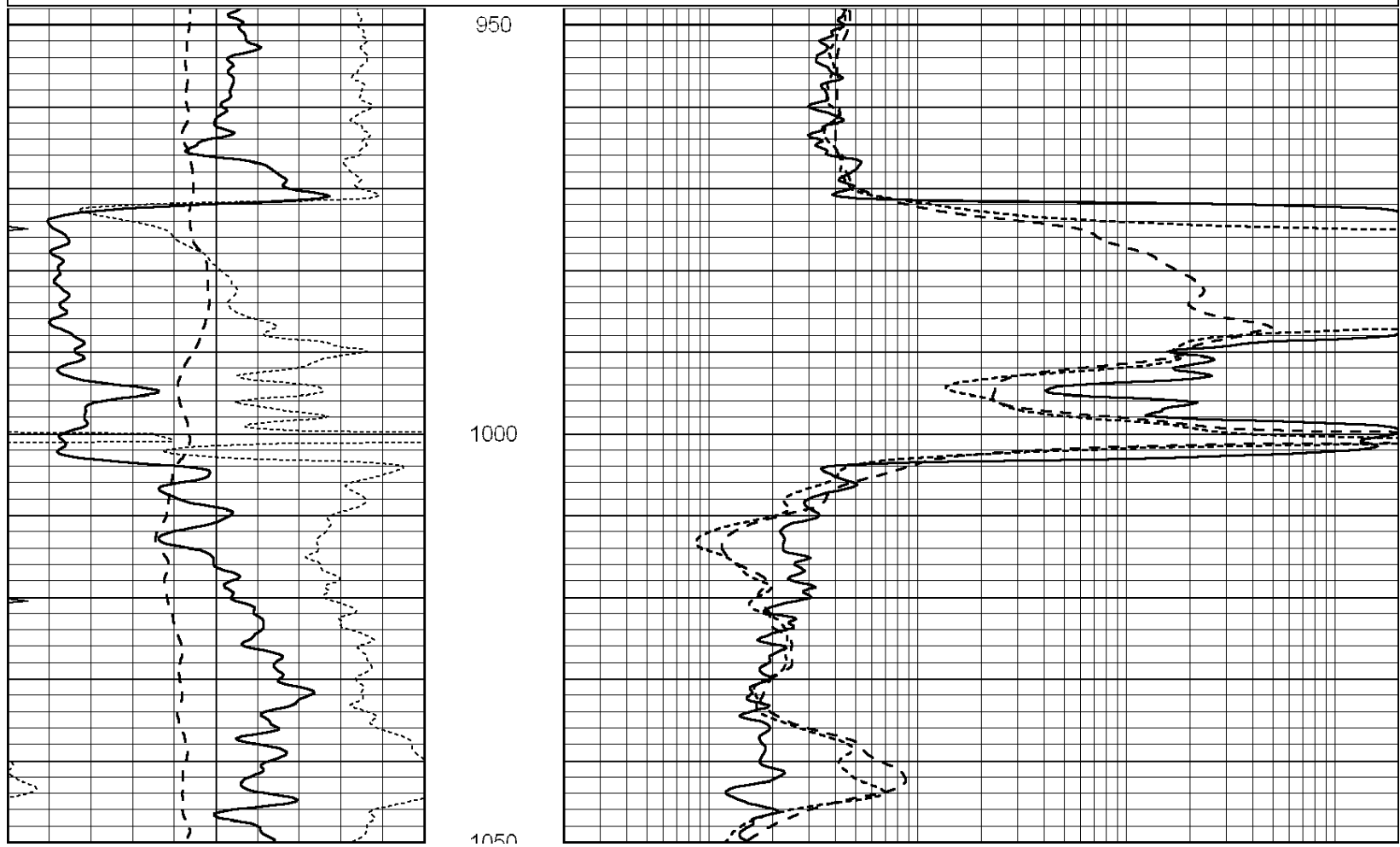
2700
2750
2800
2850
2900
2950
3000
3050
3100
3150
3200





Database File: c:\documents and settings\sds\desktop\009551ddh.db
 Dataset Pathname: pass3.2
 Presentation Format: dil
 Dataset Creation: Tue Jul 03 19:00:56 2012 by Calc Open-Cased 090629
 Charted by: Depth in Feet scaled 1:240

0	GAMMA RAY (GAPI)	150	0.2	RLL3 (Ohm-m)	2000
-100	SP (mV)	100	0.2	DEEP INDUCTION (Ohm-m)	2000
-250	RxoRt	50	0.2	MEDIUM INDUCTION (Ohm-m)	2000
0	MINMK	20			



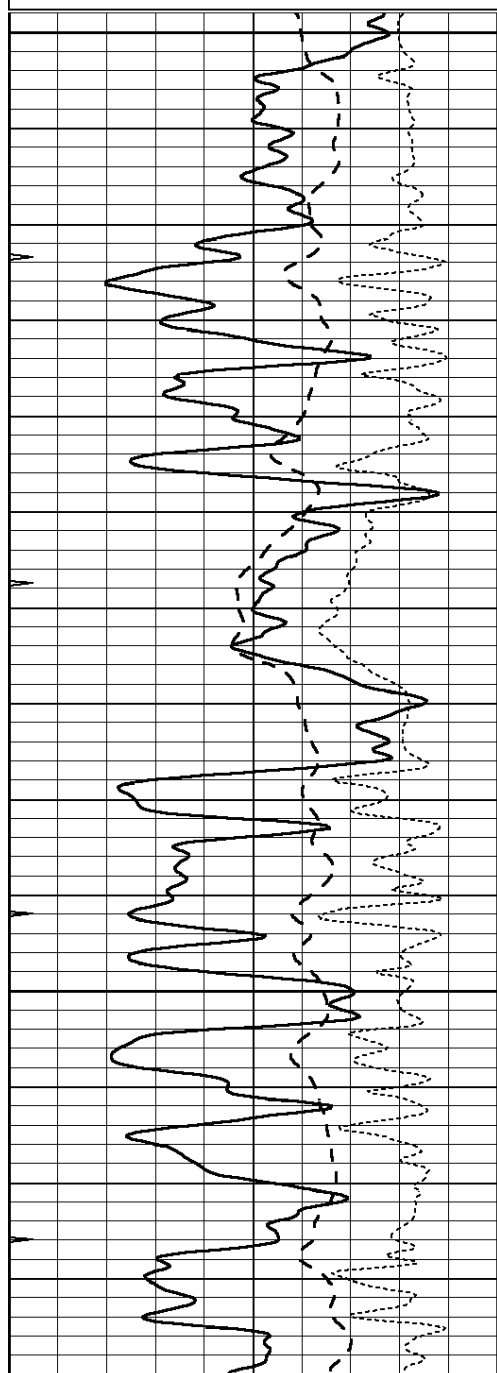
0	GAMMA RAY (GAPI)	150
-100	SP (mV)	100
-250	RxoRt	50
0	MINMK	20

0.2	RLL3 (Ohm-m)	2000
0.2	DEEP INDUCTION (Ohm-m)	2000
0.2	MEDIUM INDUCTION (Ohm-m)	2000

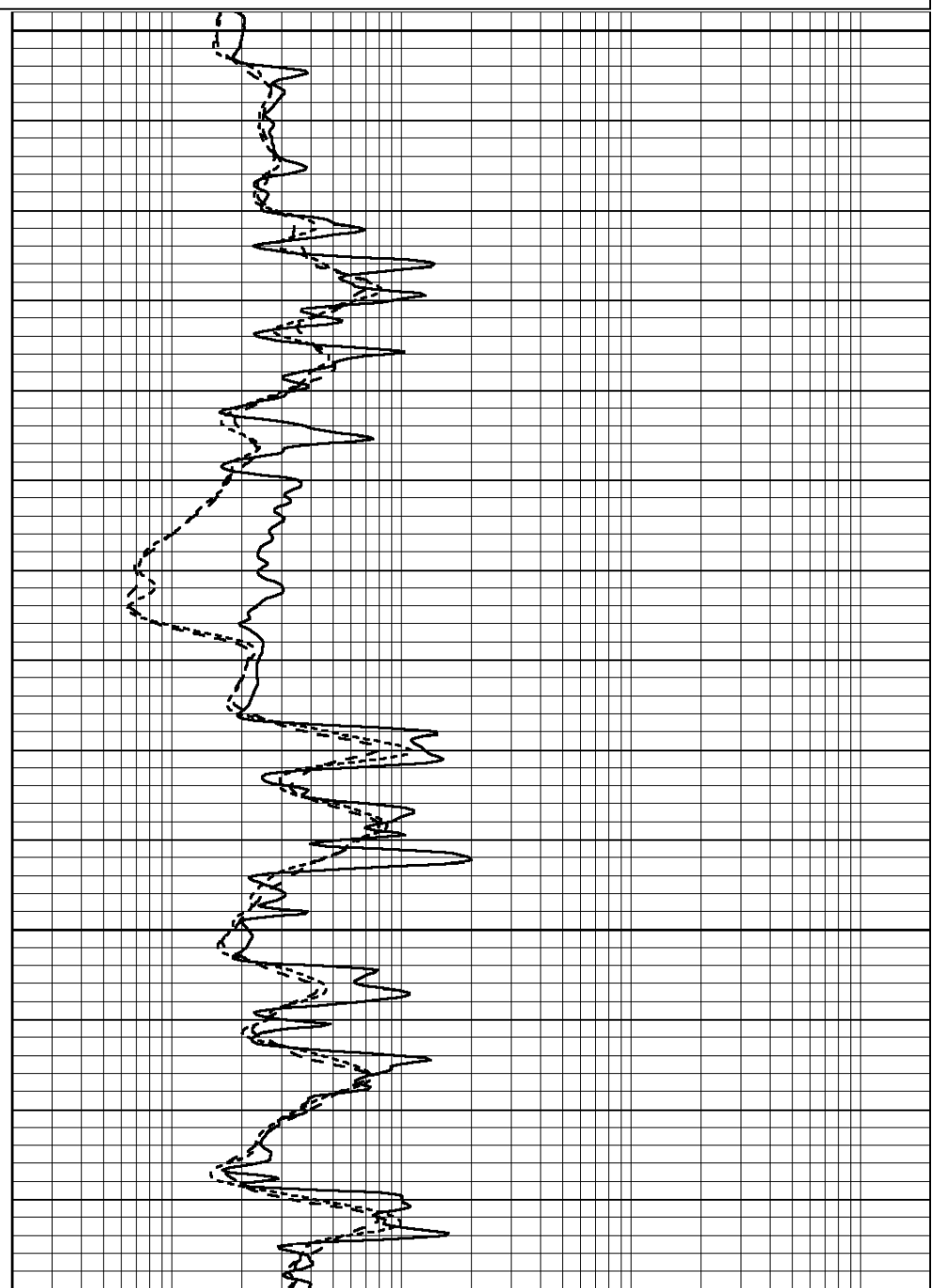
Database File: c:\documents and settings\sds\desktop\009551ddn.db
 Dataset Pathname: pass3.1
 Presentation Format: dil
 Dataset Creation: Tue Jul 03 17:49:47 2012 by Calc Open-Cased 090629
 Charted by: Depth in Feet scaled 1:240

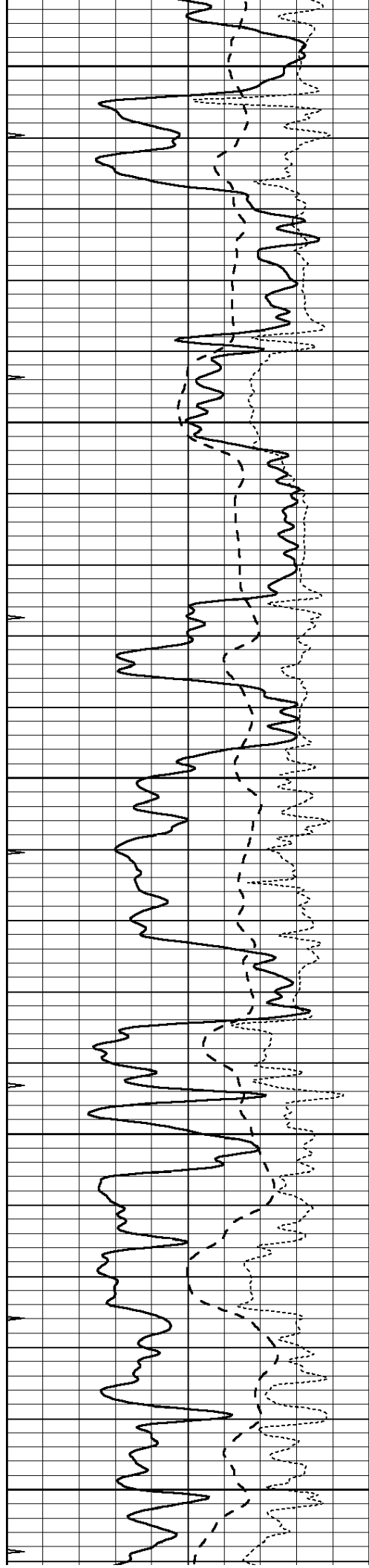
0	GAMMA RAY (GAPI)	150
-100	SP (mV)	100
-250	RxoRt	50
0	MINMK	20

0.2	RLL3 (Ohm-m)	2000
0.2	DEEP INDUCTION (Ohm-m)	2000
0.2	MEDIUM INDUCTION (Ohm-m)	2000



2500
2550
2600





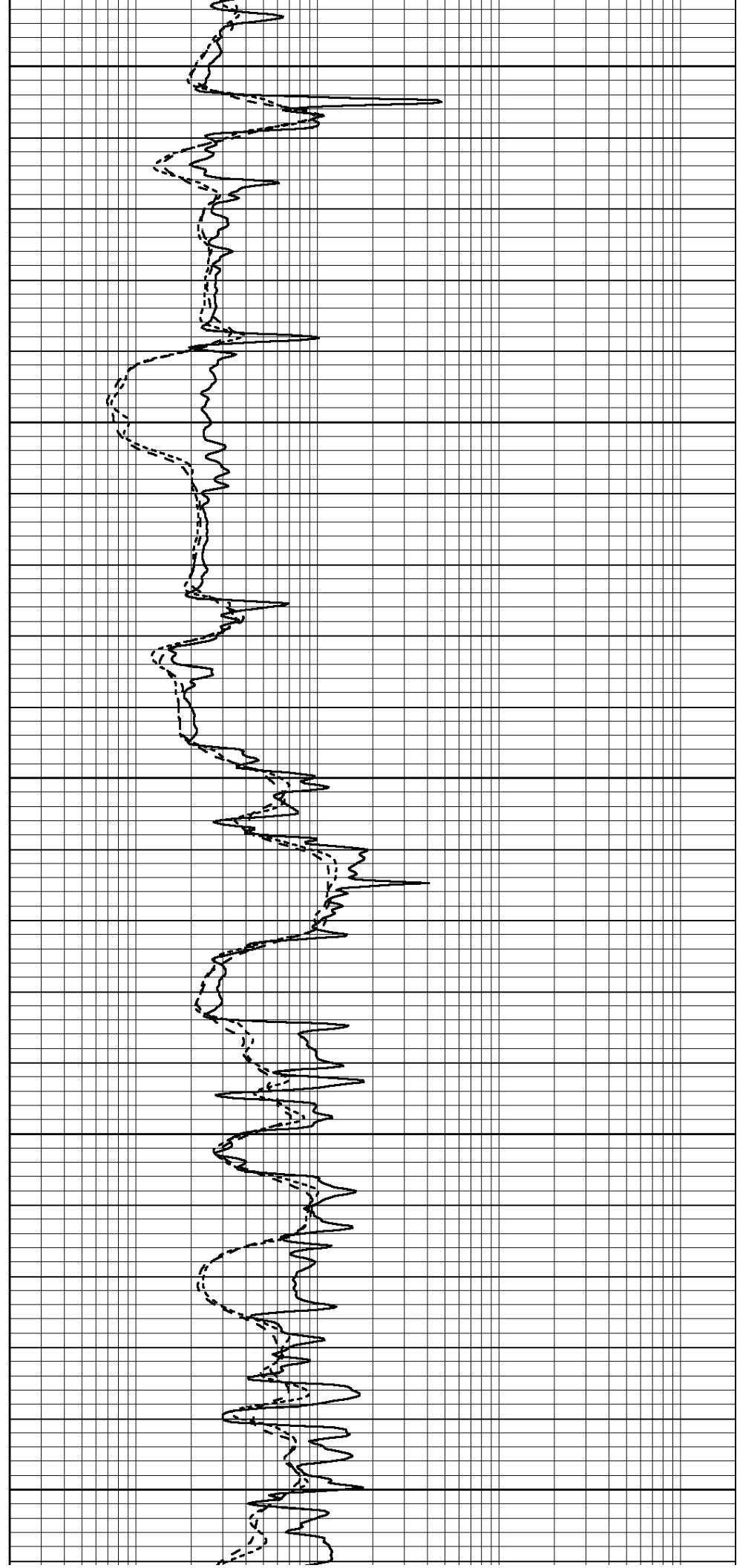
2650

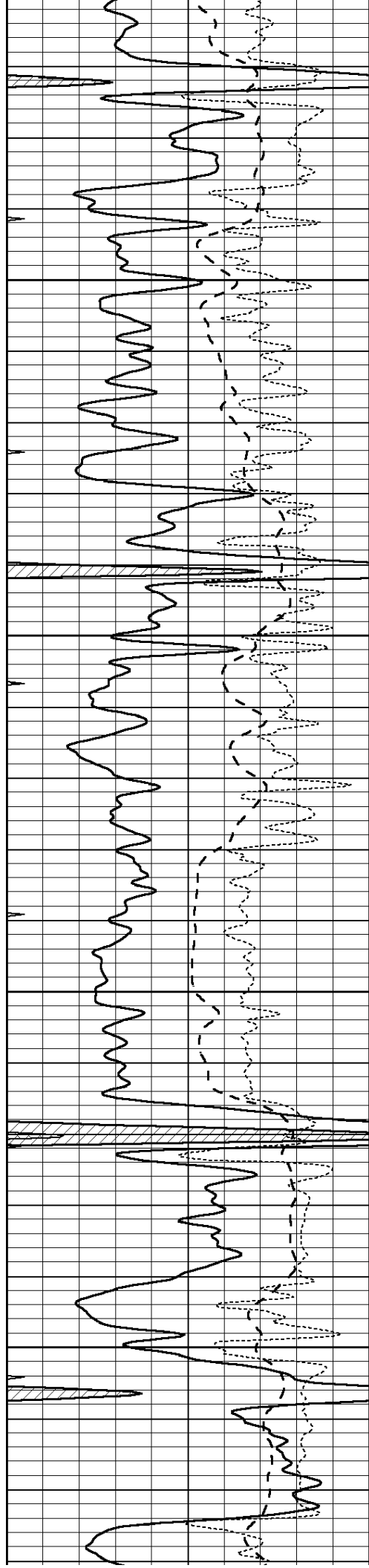
2700

2750

2800

2850



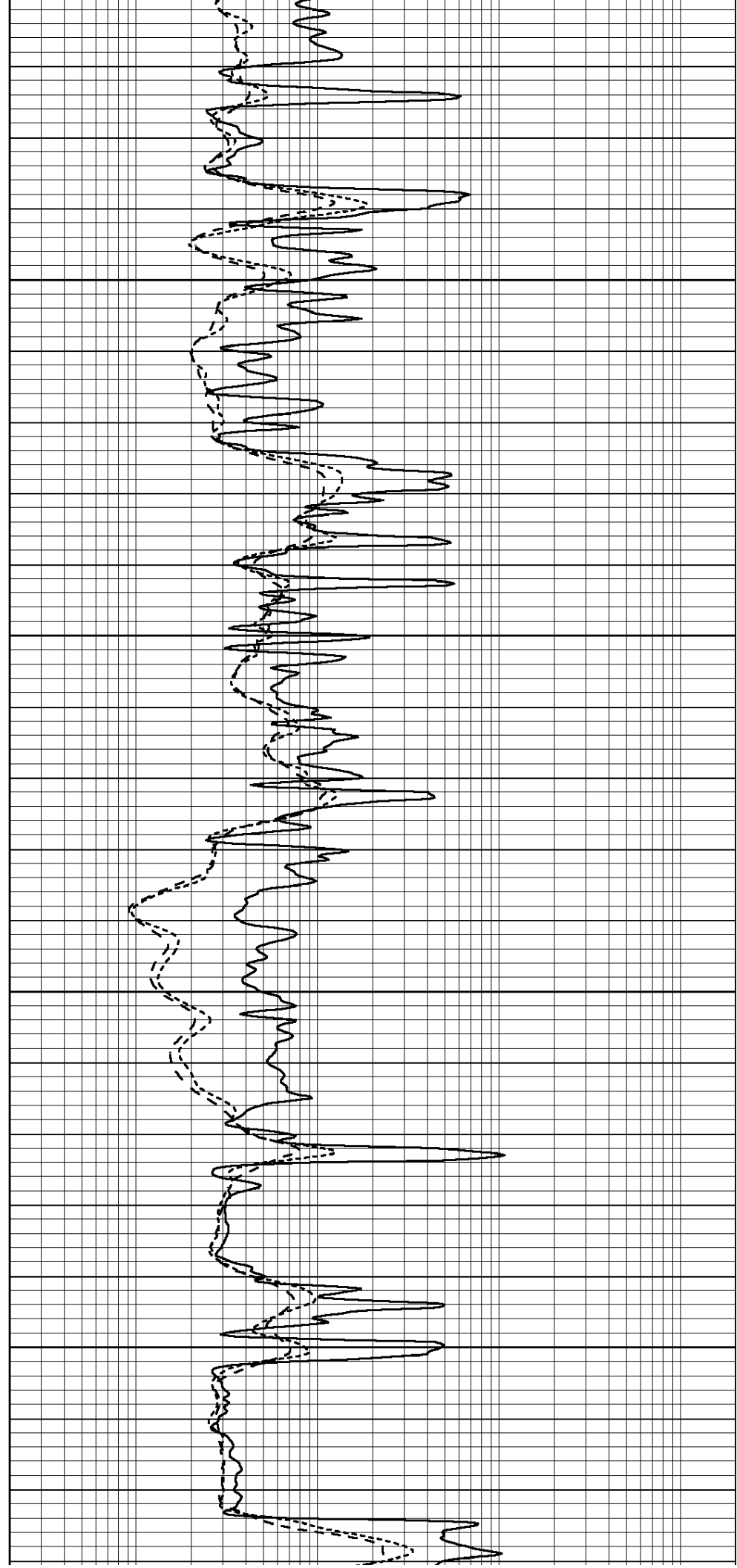


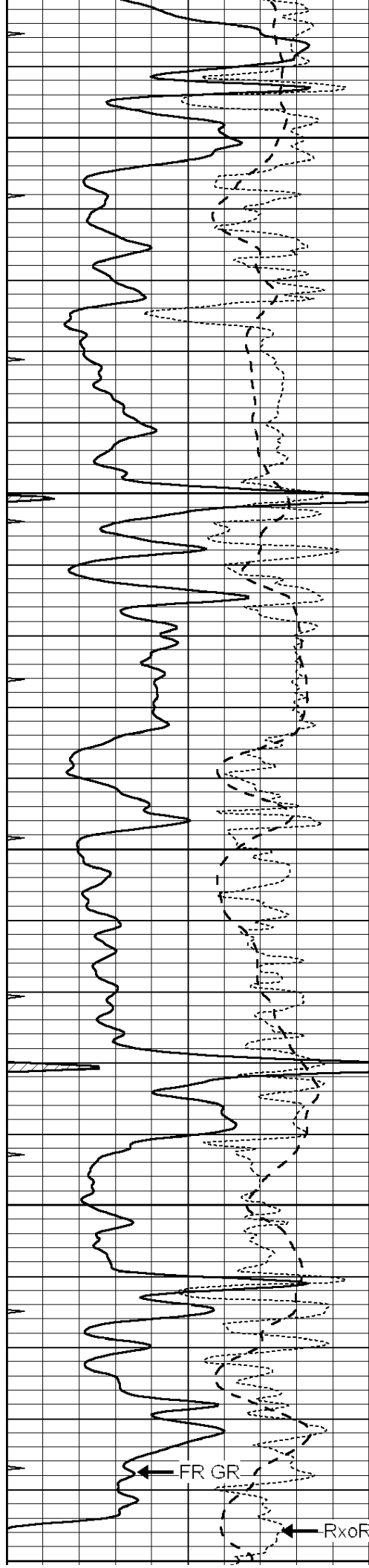
2900

2950

3000

3050





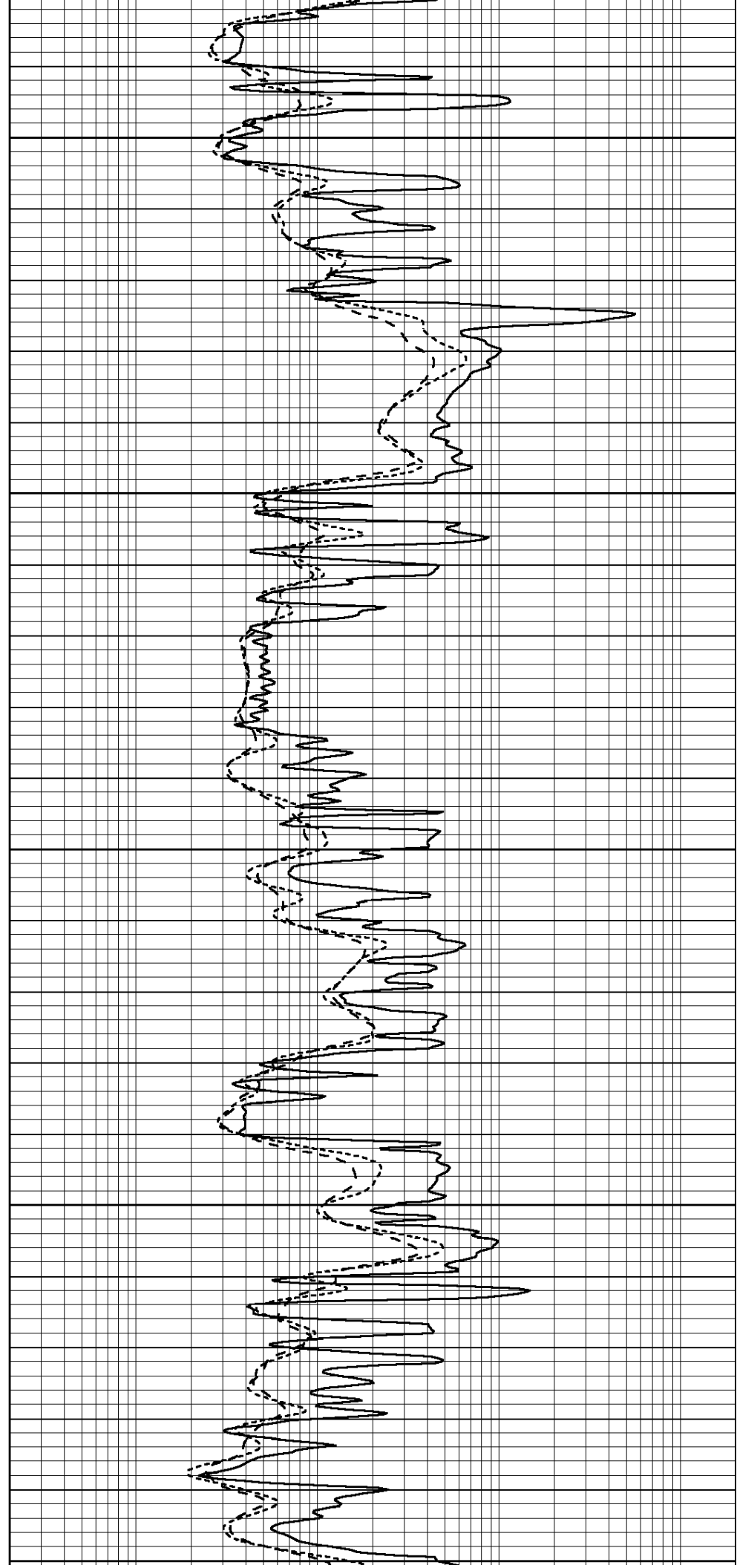
3100

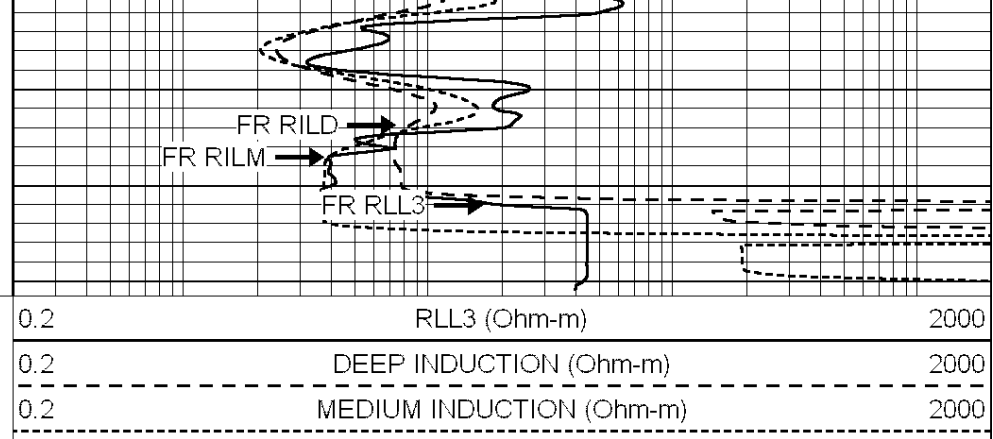
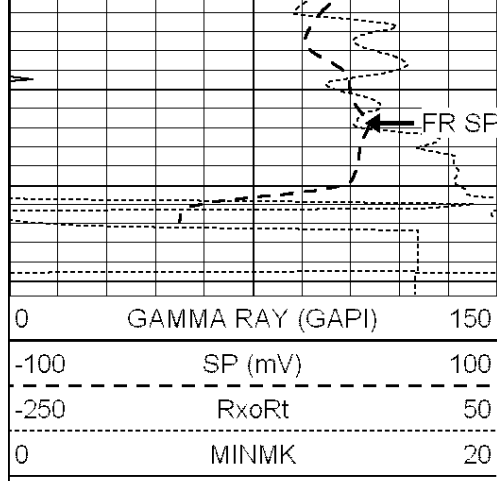
3150

3200

3250

3300

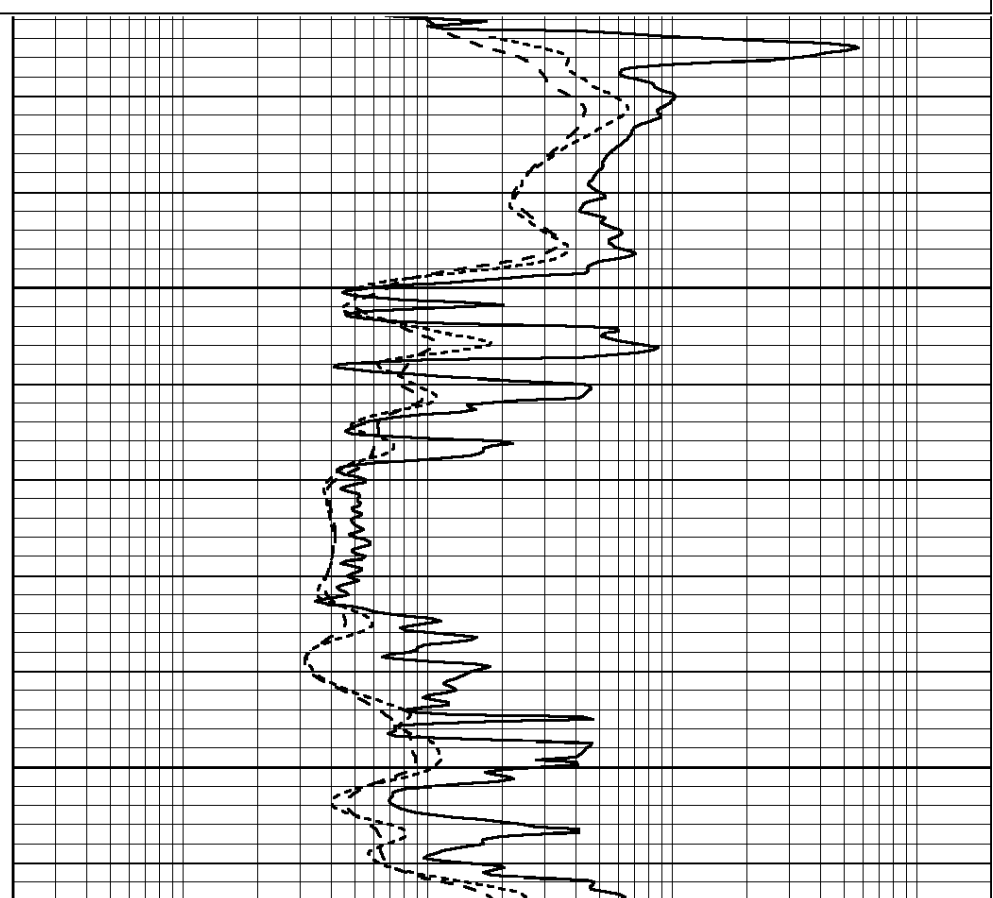
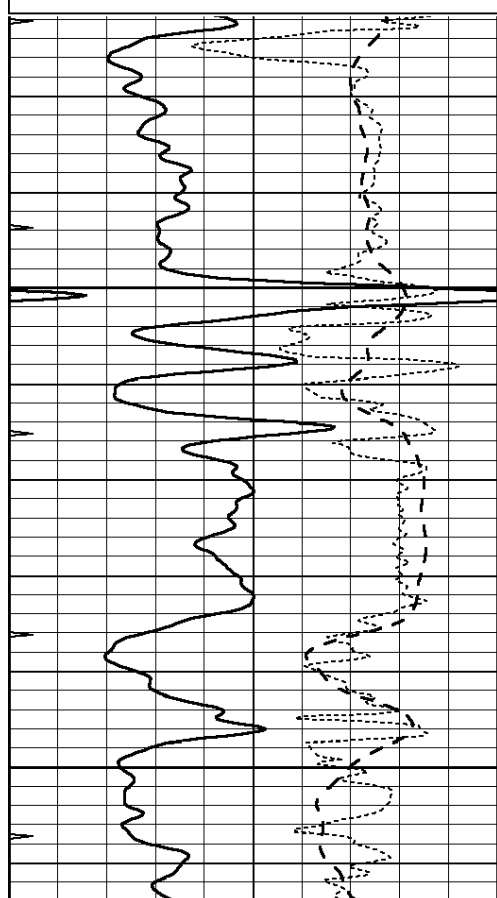
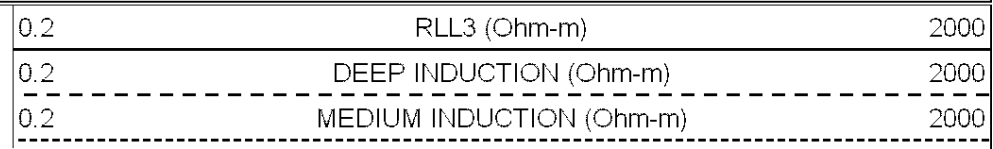
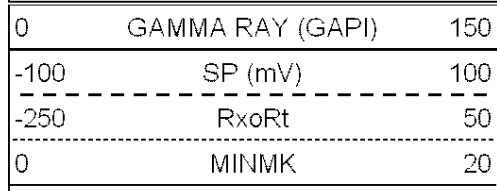


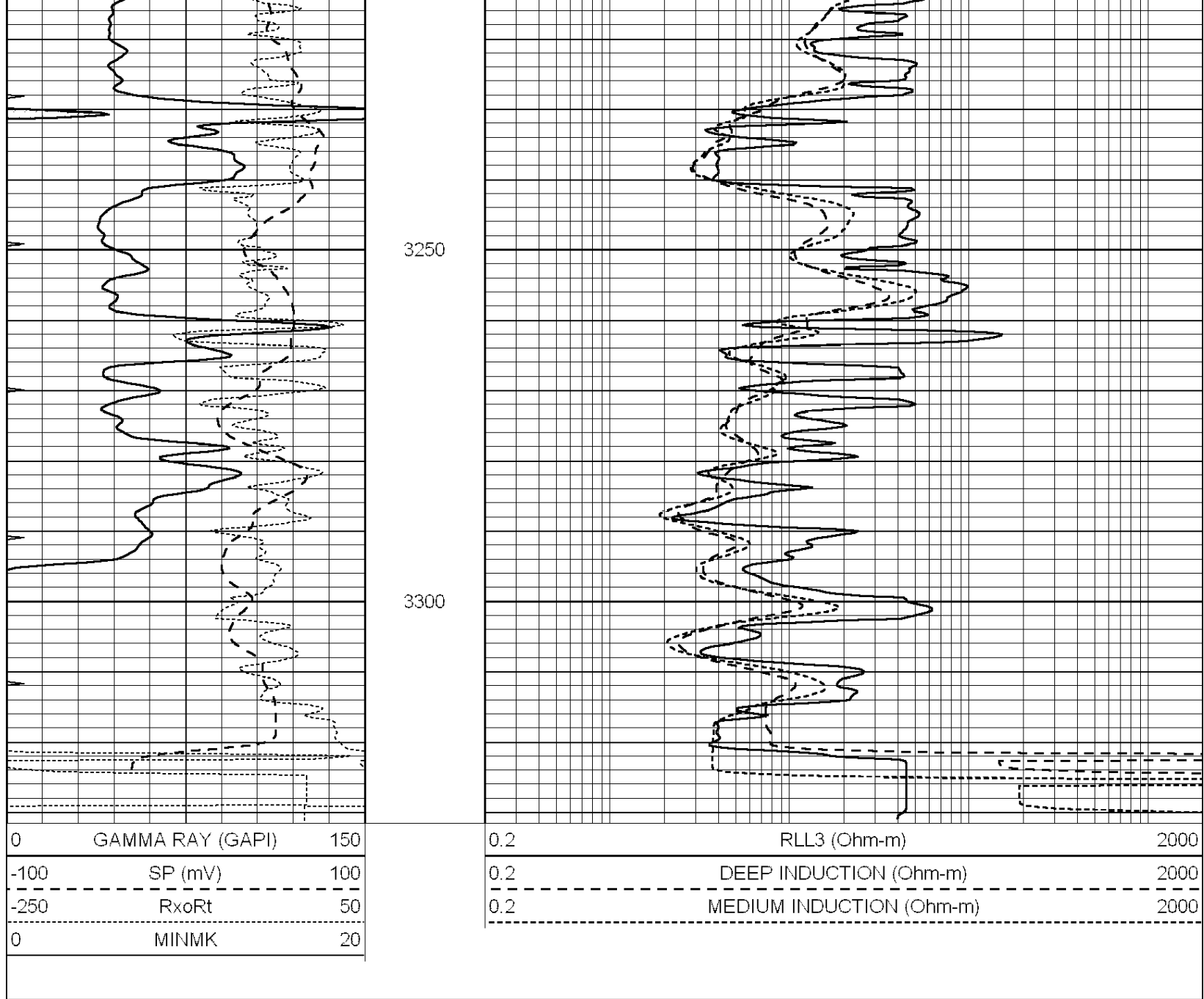


**COMPLETION
& PRODUCTION
SERVICES CO.**

REPEAT SECTION

Database File: c:\documents and settings\sds\desktop\009551ddn.db
 Dataset Pathname: pass2.3
 Presentation Format: dil
 Dataset Creation: Tue Jul 03 17:53:40 2012 by Calc Open-Cased 090629
 Charted by: Depth in Feet scaled 1:240





Calibration Report

Database File: C:\Documents and Settings\SDS\Desktop\009551ddn.db
 Dataset Pathname: pass3.2
 Dataset Creation: Tue Jul 03 19:00:56 2012 by Calc Open-Cased 090629

Dual Induction Calibration Report

Serial-Model: PROBE9-DILG
 Surface Cal Performed: Tue Jul 03 07:02:50 2012
 Downhole Cal Performed: Mon Jul 28 12:02:56 2008
 After Survey Verification Performed: Fri Jun 01 07:32:39 2012

Surface Calibration

Loop:	Readings			References			Results	
	Air	Loop	V	Air	Loop	mmho/m	m	b
Deep	-0.014	0.629	V	0.000	400.000	mmho/m	540.000	-12.000
Medium	0.039	0.728	V	0.000	464.000	mmho/m	540.000	-16.000
Internal:	Zero	Cal		Zero	Cal		m	b
Deep	-0.014	0.629	V	0.000	400.000	mmho/m	540.000	-12.000
Medium	0.039	0.728	V	0.000	464.000	mmho/m	540.000	-16.000

Deep	0.011	0.610	V	0.000	400.000	mmho/m	667.133	-7.256
Medium	0.005	0.712	V	0.000	464.000	mmho/m	655.677	-3.102

Downhole Calibration

	Readings			References			Results	
	Zero	Cal		Zero	Cal		m'	b'
Deep	0.000	0.000	mmho/m	14.508	388.384	mmho/m	1.000	0.000
Medium	0.000	0.000	mmho/m	166.367	504.400	mmho/m	1.000	0.000
LL3		7.500	V		1400.000	Ohm-m		
		0.000	V		20.000	Ohm-m		
		-7.200	V		3970.000	mmho-m		

After Survey Verification

	Readings			Targets			Results	
	Zero	Cal		Zero	Cal		m'	b'
Deep	0.000	0.000	mmho/m	0.000	0.000	mmho/m	0.000	0.000
Medium	0.000	0.000	mmho/m	0.000	0.000	mmho/m	0.000	0.000
LL3		1.000	Ohm-m		1.000	Ohm-m		
		0.000	Ohm-m		0.000	Ohm-m		
		1.000	mmho-m		1.000	mmho-m		

Compensated Density Calibration Report

Serial-Model:	GEAR2-GEARHART
Source / Verifier:	147 / 147
Master Calibration Performed:	Wed Jun 27 04:03:46 2012

Master Calibration

	Density		Far Detector	Near Detector	
Magnesium	1.710	g/cc	1203.63	642.89	cps
Aluminum	2.590	g/cc	267.51	439.63	cps
Spine Angle = 75.82			Density/Spine Ratio = 0.567		
	Size		Reading		
Small Ring	7.90	in	4.59	V	
Large Ring	14.00	in	6.70	V	

Compensated Neutron Calibration Report

Serial Number:	NUE_2I
Tool Model:	G

CALIBRATION

Detector	Readings		Target		Normalization
Short Space	1.00	cps	1.00	cps	1.0000
Long Space	1.00	cps	1.00	cps	1.0000

Gamma Ray Calibration Report

Serial Number:	GR5
Tool Model:	OPEN
Performed:	Tue Jul 03 07:18:40 2012
Calibrator Value:	1.0
	GAPI
Background Reading:	0.0
Calibrator Reading:	1.0
	cps
Sensitivity:	0.7500
	GAPI/cps