



**COMPLETION  
& PRODUCTION  
SERVICES CO.**

**MICRO  
LOG**

Company DREILING OIL, INC.  
Well THOMPSON TRUST #1-1  
Field  
County OSBORNE State KANSAS

Company DREILING OIL, INC.  
Well THOMPSON TRUST #1-1  
Field  
County OSBORNE  
State KANSAS

Location: API #: 15-141-20449-0000  
990' FNL & 2310' FWL  
SE - NE - NW  
SEC 1 TWP 9S RGE 12W  
Permanent Datum GROUND LEVEL Elevation 1868  
Log Measured From KELLY BUSHING 8' A.G.L.  
Drilling Measured From KELLY BUSHING  
Other Services  
CDL/CNL  
DIL  
Elevation  
K.B. 1876  
D.F. 1874  
G.L. 1868

Date	7-3-12		
Run Number	TWO		
Depth Driller	3325		
Depth Logger	3324		
Bottom Logged Interval	3322		
Top Log Interval	2500		
Casing Driller	222		
Casing Logger	221		
Bit Size	7.875		
Type Fluid in Hole	STAROCH MUD	CHLORIDES: 5,000 ppm	
Density / Viscosity	9.3 / 50		
pH / Fluid Loss	9.5 / 8.8		
Source of Sample	FLOWLINE		
Rim @ Meas. Temp	0.60 @ 92F		
Rmf @ Meas. Temp	0.45 @ 92F		
Rmc @ Meas. Temp	0.72 @ 92F		
Source of Rmf / Rmc	MEASURED		
Rim @ BHT	0.50 @ 110F		
Time Circulation Stopped	4 HOURS		
Time Logger on Bottom			
Maximum Recorded Temperature	110F		
Equipment Number	860		
Location	HAYS, KS.		
Recorded By	JEFF GRONEWEG	TERRY PIESKER	
Witnessed By	BILL REE		

<<< Fold Here >>>

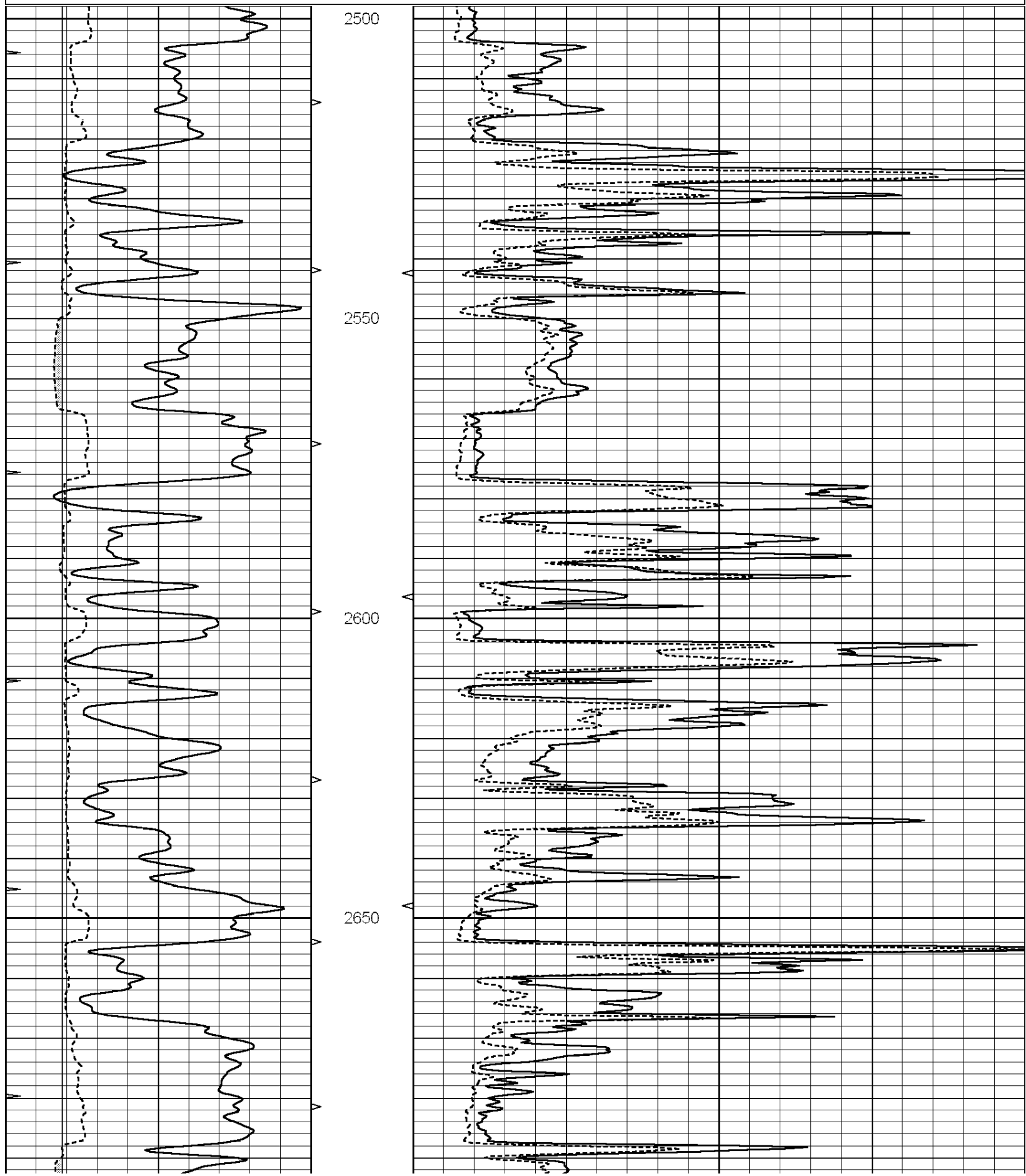
All interpretations are opinions based on inferences from electrical or other measurements and we cannot and do not guarantee the accuracy or correctness of any interpretation, and we shall not, except in the case of gross or willful negligence on our part, be liable or responsible for any loss, costs, damages, or expenses incurred or sustained by anyone resulting from any interpretation made by any of our officers, agents or employees. These interpretations are also subject to our general terms and conditions set out in our current Price Schedule.

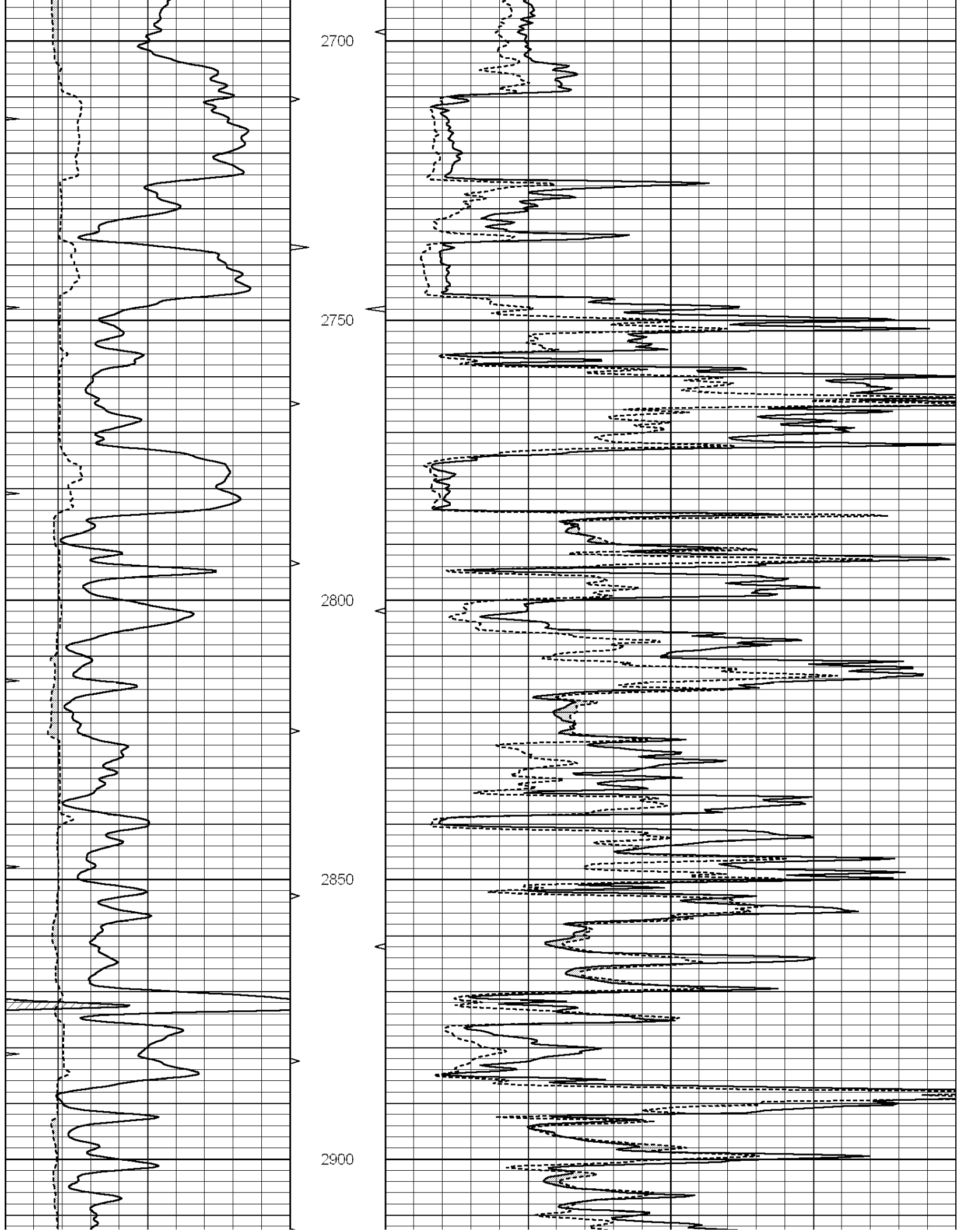
Comments

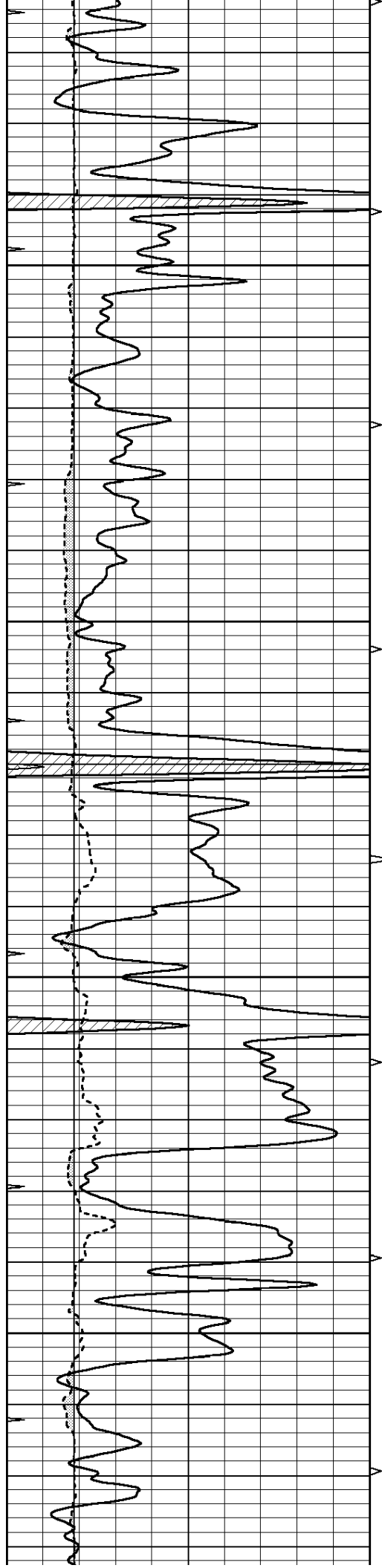
SUPERIOR WELL SERVICES  
785-628-6395  
THANK YOU FOR YOUR BUSINESS  
DIRECTIONS: LUCAS, KS - NORTH ON BLACKTOP ON WEST SIDE OF TOWN 17 MILES  
TO RD 190 - 4 MILES WEST TO T IN RD - 1 MILE NORTH - WEST INTO

0	GAMMA RAY (GAPI)	150
6	MELCAL (in)	16
0	MINMK	20

0	MEL1.5 (Ohm-m)	40
0	MEL2.0 (Ohm-m)	40





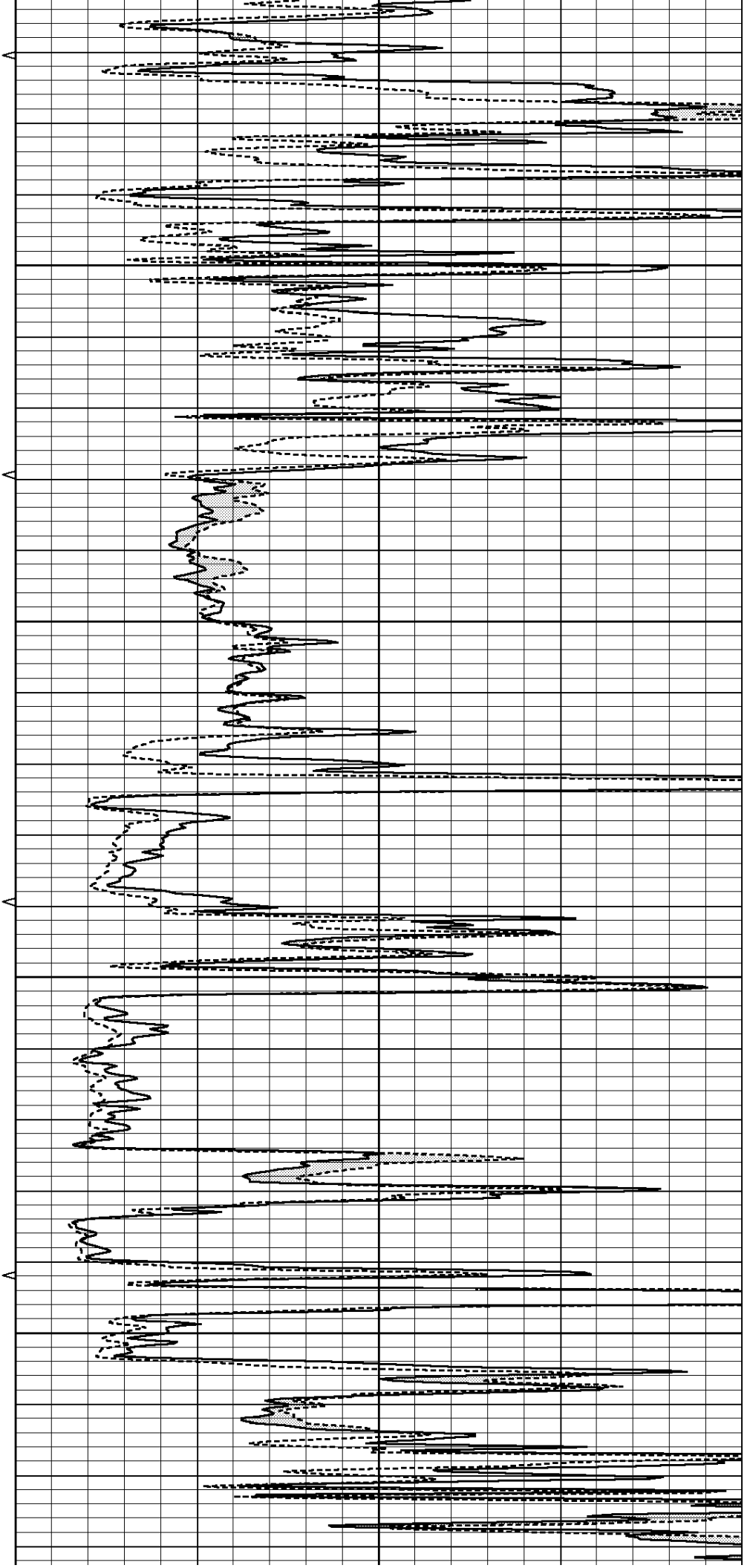


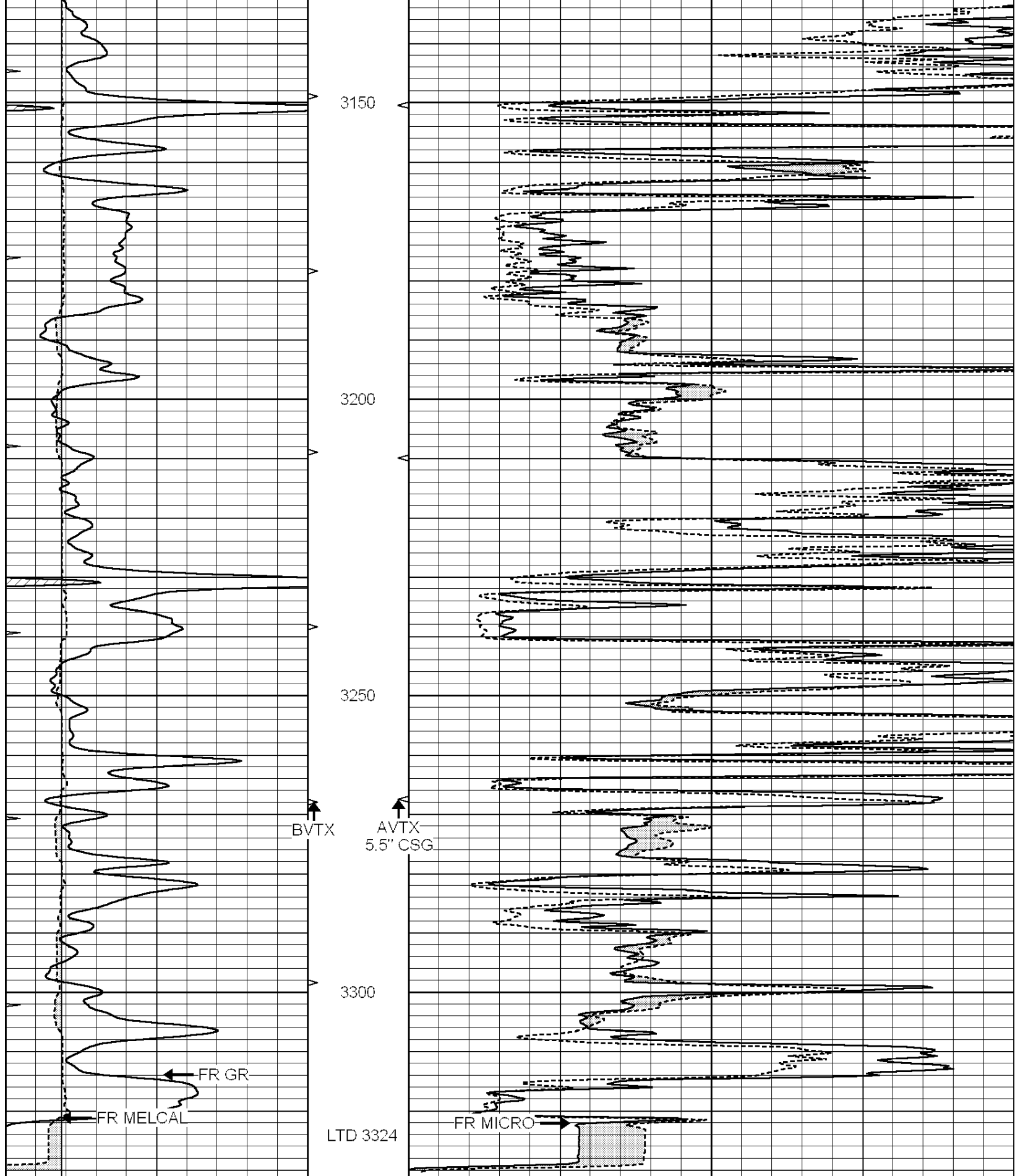
2950

3000

3050

3100





0	GAMMA RAY (GAPI)	150
6	MELCAL (in)	16
0	MINMK	20

0	MEL1.5 (Ohm-m)	40
0	MEL2.0 (Ohm-m)	40



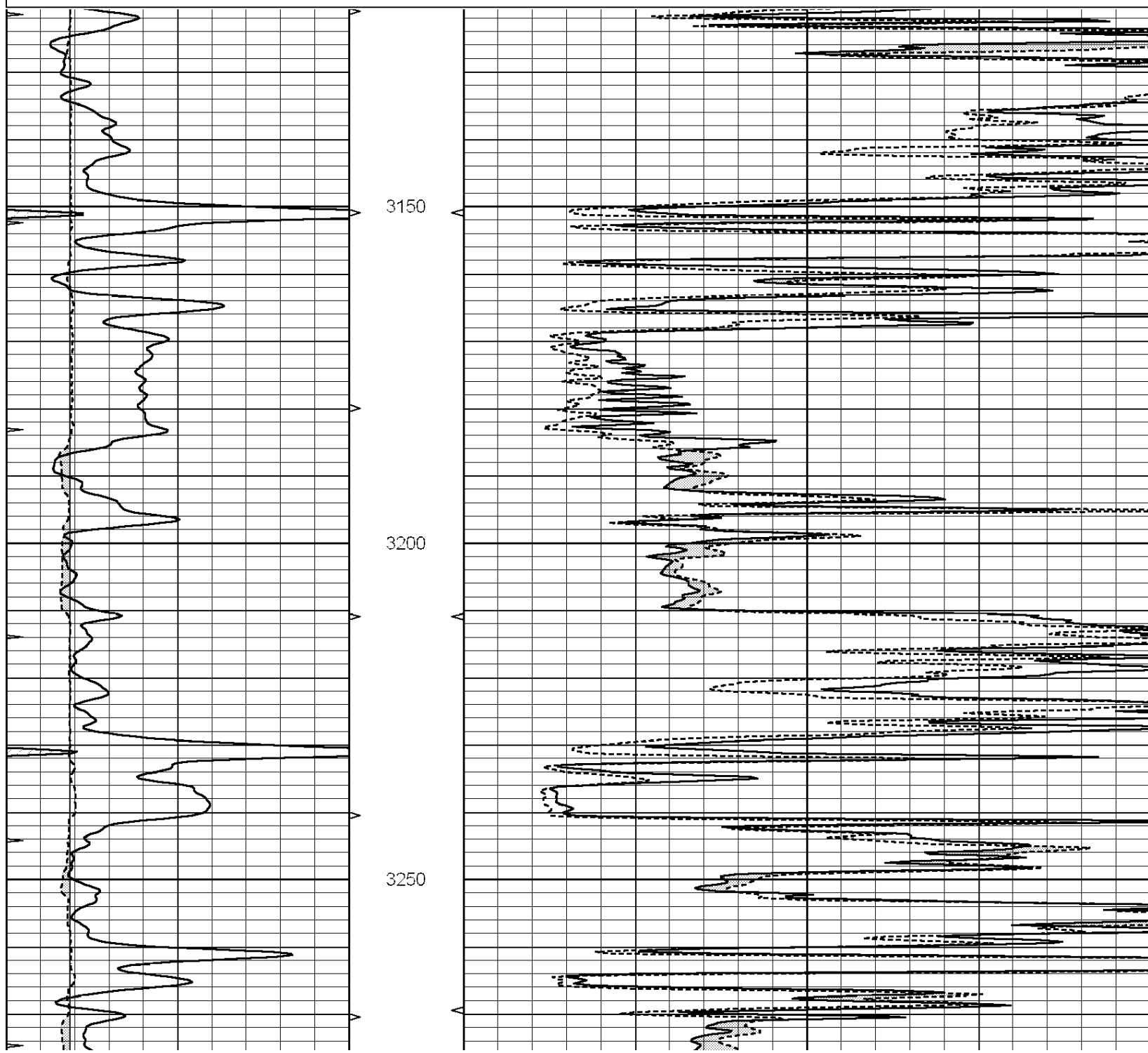
**COMPLETION  
& PRODUCTION  
SERVICES CO.**

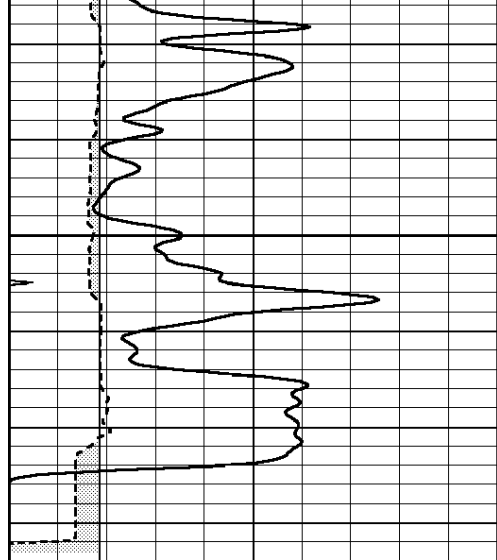
# REPEAT SECTION

Database File: c:\documents and settings\sds\desktop\009551ddh.db  
Dataset Pathname: pass4.3  
Presentation Format: micro  
Dataset Creation: Tue Jul 03 19:05:44 2012 by Calc Open-Cased 090629  
Charted by: Depth in Feet scaled 1:240

0	GAMMA RAY (GAPI)	150
6	MELCAL (in)	16
0	MINMK	20

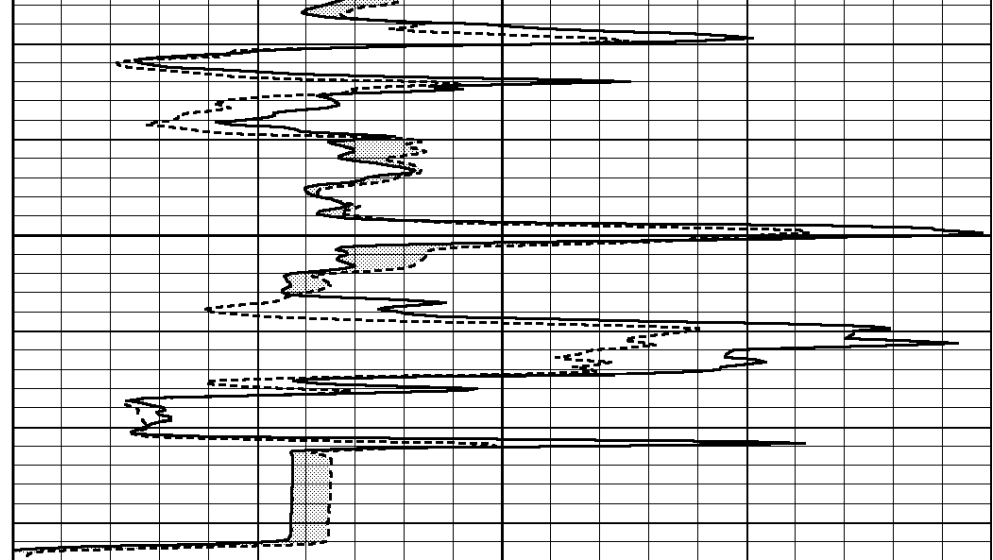
0	MEL1.5 (Ohm-m)	40
0	MEL2.0 (Ohm-m)	40





3300

0	GAMMA RAY (GAPI)	150
6	MELCAL (in)	16
0	MINMK	20



0	MEL1.5 (Ohm-m)	40
0	MEL2.0 (Ohm-m)	40

### Calibration Report

Database File: C:\Documents and Settings\SDS\Desktop\009551ddn.db  
 Dataset Pathname: pass5.1  
 Dataset Creation: Tue Jul 03 19:32:46 2012 by Calc Open-Cased 090629

### MICRO Calibration Report

Serial Number:	MICRO4	
Tool Model:	PROBE	
Performed:	Wed Jun 27 07:31:26 2012	
Caliper Calibration:	Gain=1.302	Offset=0.305
References	Low Cal	High Cal
Readings	7.400	11.000
	5.449	8.214
1.5" Calibration:	Gain=45.000	Offset=-0.200
References	Low Cal	High Cal
Readings	0.000	20.000
	0.009	1.541
2" Calibration:	Gain=38.000	Offset=0.600
References	Low Cal	High Cal
Readings	0.000	20.000
	0.004	1.198

### Gamma Ray Calibration Report

Serial Number:	GR5	
Tool Model:	OPEN	
Performed:	Tue Jul 03 07:18:40 2012	
Calibrator Value:	1.0	GAPI
Background Reading:	0.0	cps
Calibrator Reading:	1.0	cps
Sensitivity:	0.7700	GAPI/cps