



**COMPLETION  
& PRODUCTION  
SERVICES CO.**

**COMPENSATED  
DENSITY / NEUTRON  
LOG**

Company DREILING OIL, INC.  
Well THOMPSON TRUST #1-1  
Field  
County OSBORNE State KANSAS

Company DREILING OIL, INC.  
Well THOMPSON TRUST #1-1  
Field  
County OSBORNE  
State KANSAS

Location: API #: 15-141-20449-0000  
990' FNL & 2310' FWL  
SE - NE - NW  
SEC 1 TWP 9S RGE 12W  
Permanent Datum GROUND LEVEL Elevation 1868  
Log Measured From KELLY BUSHING 8' A.G.L.  
Drilling Measured From KELLY BUSHING  
Other Services  
DIL/MEL  
Elevation  
K.B. 1876  
D.F. 1874  
G.L. 1868

Date	7-3-12		
Run Number	ONE		
Depth Driller	3325		
Depth Logger	3324		
Bottom Logged Interval	3300		
Top Log Interval	2500		
Casing Driller	222		
Casing Logger	221		
Bit Size	7.875		
Type Fluid in Hole	STAROCH MUD	CHLORIDES: 5,000 ppm	
Density / Viscosity	9.3 / 50		
pH / Fluid Loss	9.5 / 8.8		
Source of Sample	FLOWLINE		
Rim @ Meas. Temp	0.60 @ 92F		
Rmf @ Meas. Temp	0.45 @ 92F		
Rmc @ Meas. Temp	0.72 @ 92F		
Source of Rmf / Rmc	MEASURED		
Rim @ BHT	0.50 @ 110F		
Time Circulation Stopped	4 HOURS		
Time Logger on Bottom			
Maximum Recorded Temperature	110F		
Equipment Number	860		
Location	HAYS, KS.		
Recorded By	JEFF GRONEWEG		
Witnessed By	BILL REE	TERRY PIESKER	

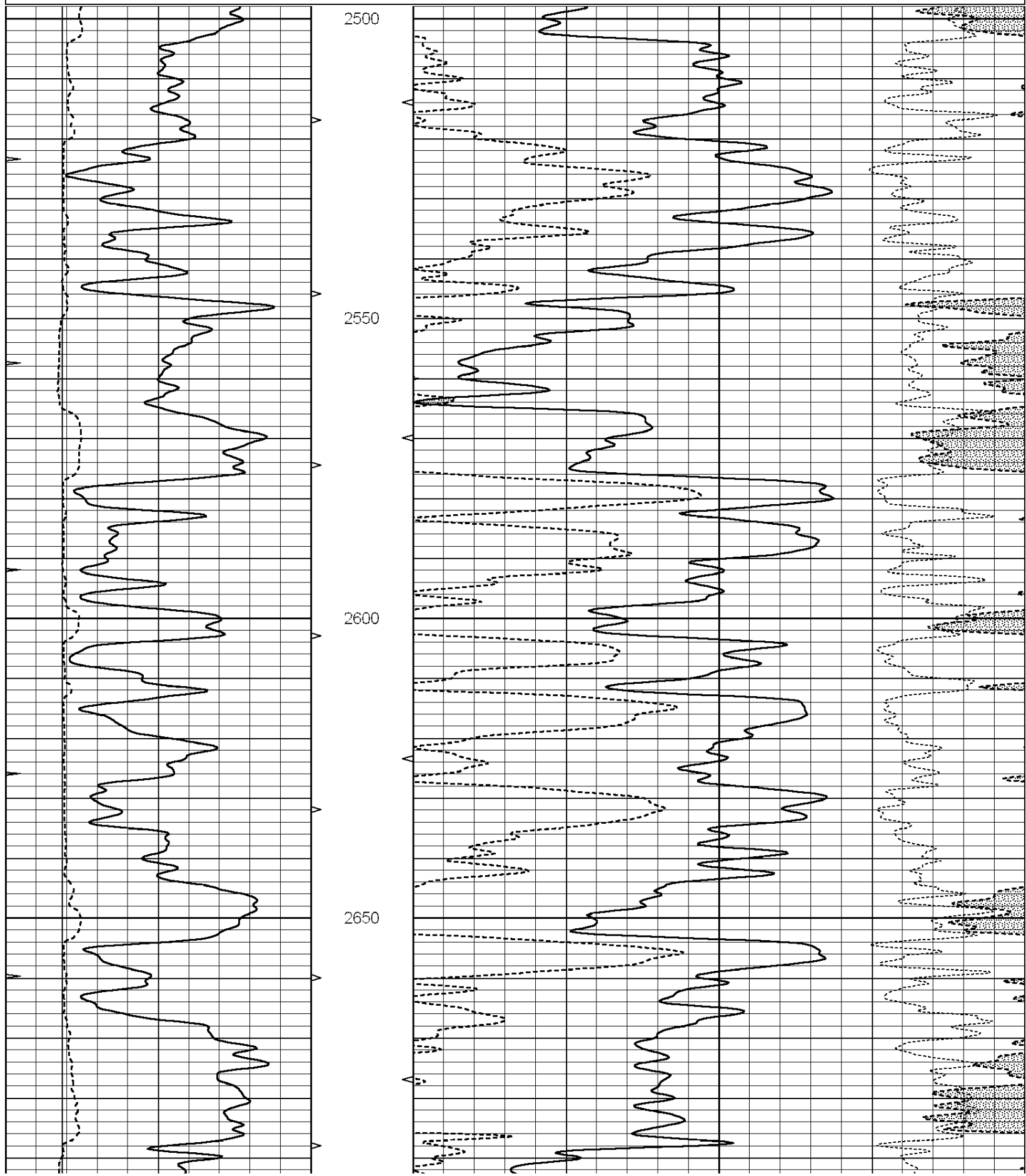
<<< Fold Here >>>

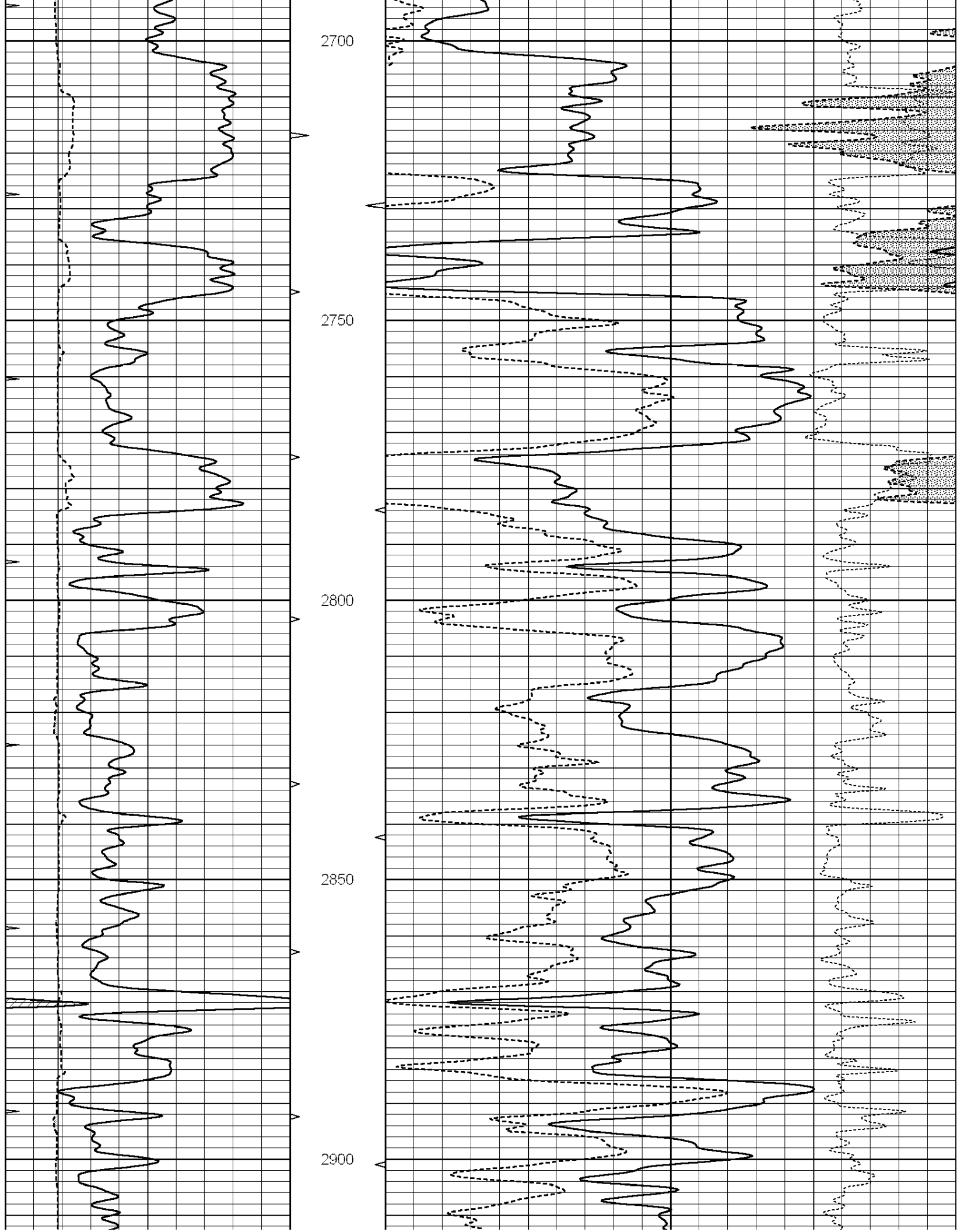
All interpretations are opinions based on inferences from electrical or other measurements and we cannot and do not guarantee the accuracy or correctness of any interpretation, and we shall not, except in the case of gross or willful negligence on our part, be liable or responsible for any loss, costs, damages, or expenses incurred or sustained by anyone resulting from any interpretation made by any of our officers, agents or employees. These interpretations are also subject to our general terms and conditions set out in our current Price Schedule.

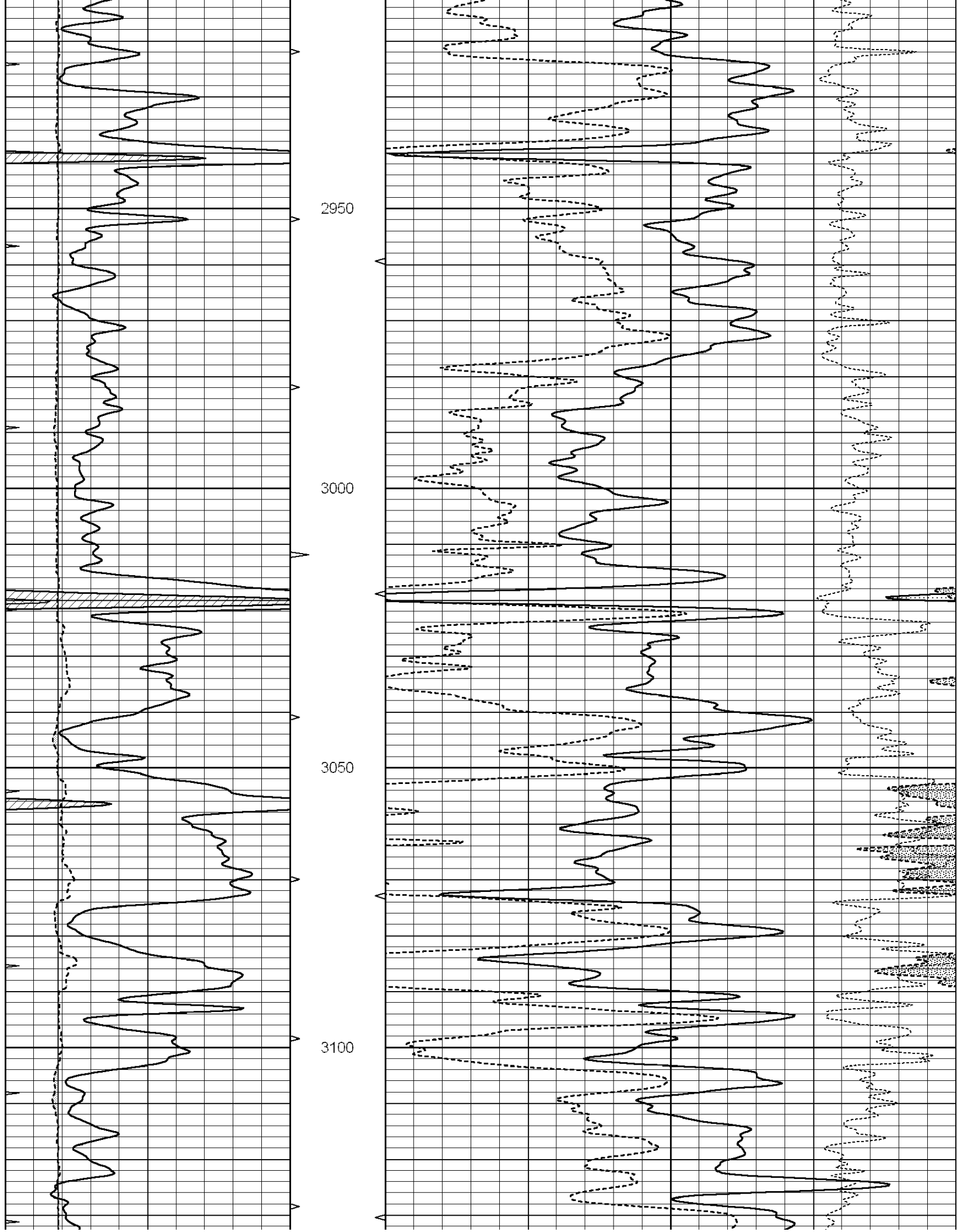
Comments

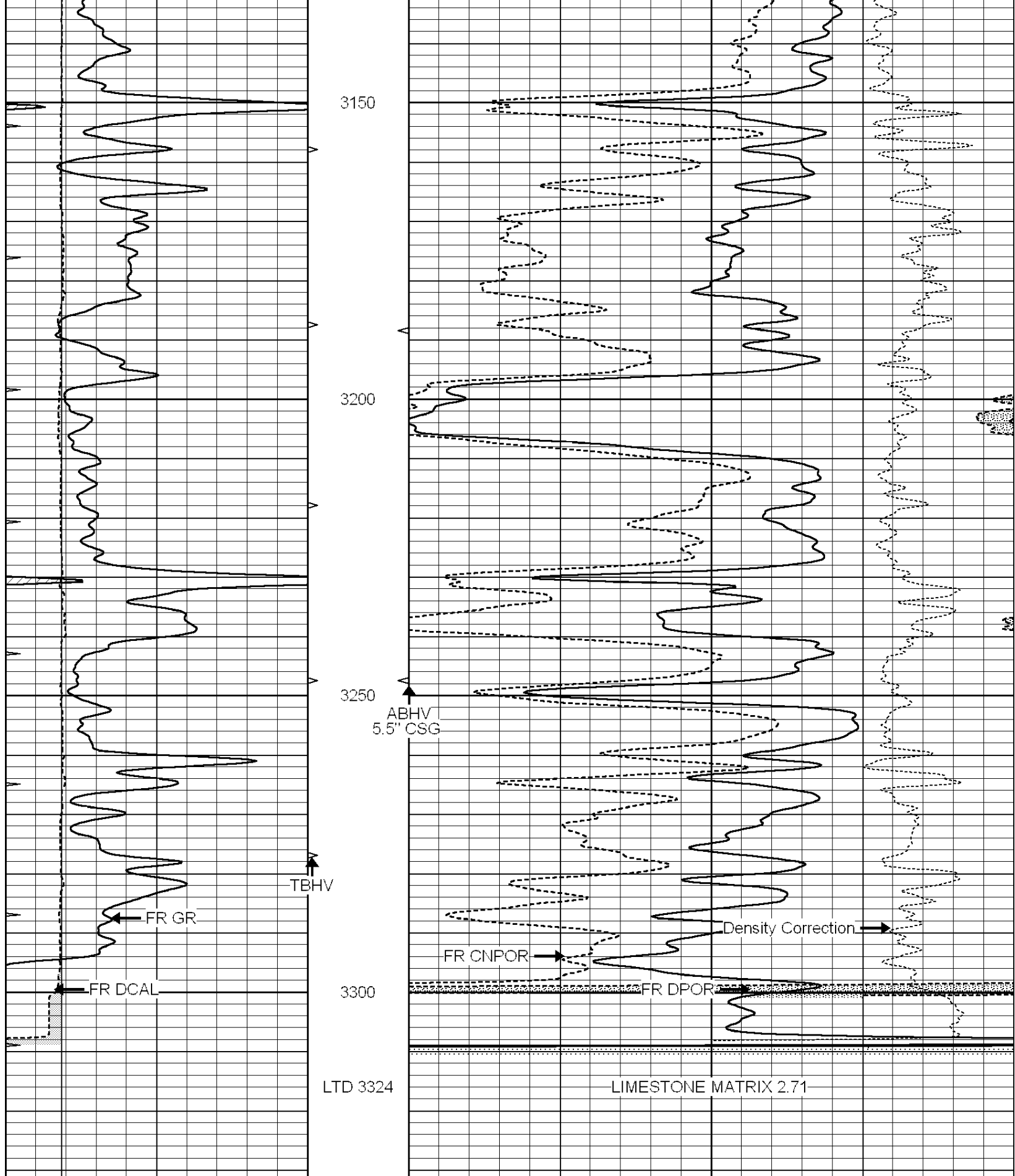
SUPERIOR WELL SERVICES  
785-628-6395  
THANK YOU FOR YOUR BUSINESS  
DIRECTIONS: LUCAS, KS - NORTH ON BLACKTOP ON WEST SIDE OF TOWN 17 MILES  
TO RD 190 - 4 MILES WEST TO T IN RD - 1 MILE NORTH - WEST INTO

0	GAMMA RAY (GAPI)	150	ABHV	30	COMPENSATED DENSITY (pu)	-10
6	CALIPER (in)	16	10 (ft3)	0 30	COMPENSATED NEUTRON (pu)	-10
0	MINMK	20	TBHV		-0.25 CORRECTION (g/cc)	0.25
			0 (ft3)	10		









0	GAMMA RAY (GAPI)	150	ABHV	30	COMPENSATED DENSITY (pu)	-10
6	CALIPER (in)	16	10 (ft3)	0 30	COMPENSATED NEUTRON (pu)	-10
0	MINMK	20	TBHV		-0.25	CORRECTION (g/cc)
			0 (ft3)	10		0.25

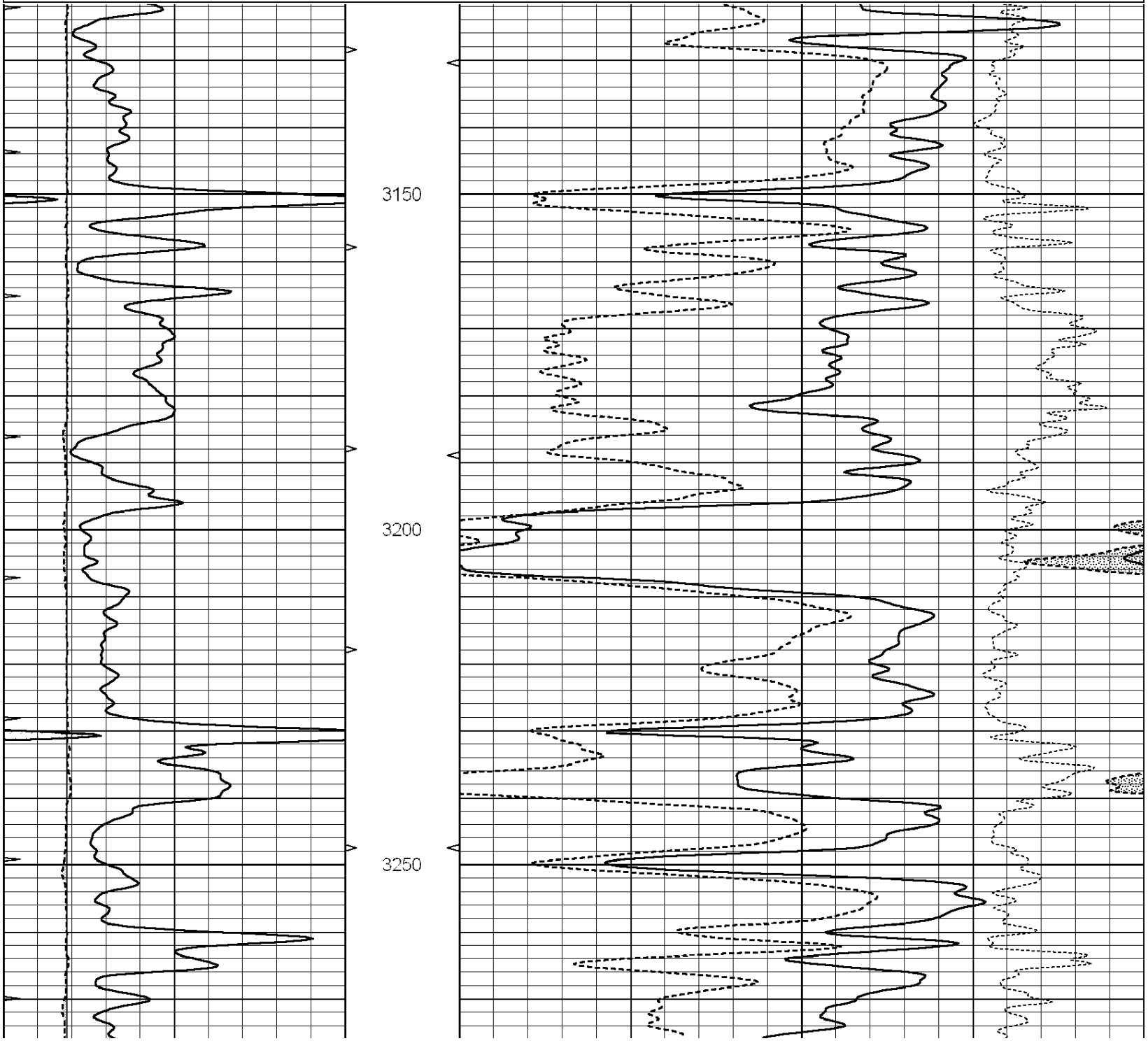


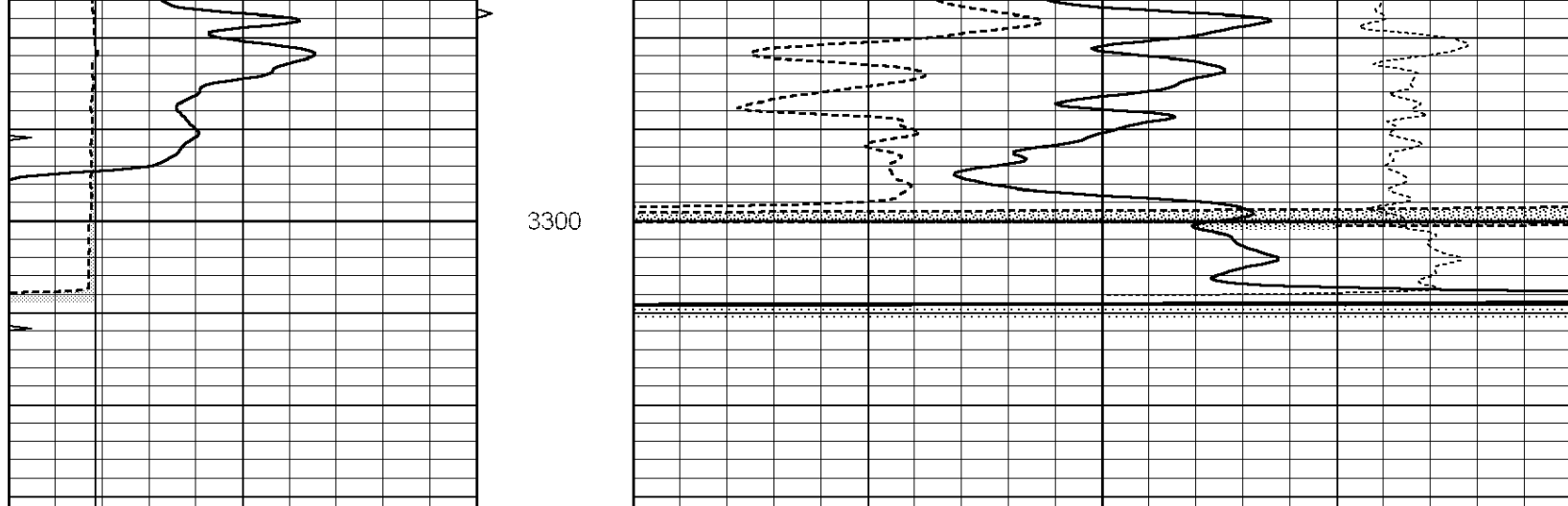
**COMPLETION  
& PRODUCTION  
SERVICES CO.**

# REPEAT SECTION

Database File: c:\documents and settings\sds\desktop\009551ddn.db  
 Dataset Pathname: pass2.3  
 Presentation Format: den\_neu  
 Dataset Creation: Tue Jul 03 17:53:40 2012 by Calc Open-Cased 090629  
 Charted by: Depth in Feet scaled 1:240

0	GAMMA RAY (GAPI)	150	ABHV	30	COMPENSATED DENSITY (pu)	-10
6	CALIPER (in)	16	10 (ft3)	0 30	COMPENSATED NEUTRON (pu)	-10
0	MINMK	20	TBHV		-0.25 CORRECTION (g/cc)	0.25
			0 (ft3)	10		





0	GAMMA RAY (GAPI)	150	ABHV	30	COMPENSATED DENSITY (pu)	-10
6	CALIPER (in)	16	10 (ft3) 0	30	COMPENSATED NEUTRON (pu)	-10
0	MINMK	20	TBHV		-0.25 CORRECTION (g/cc)	0.25
			0 (ft3) 10			

Calibration Report

Database File: C:\Documents and Settings\SDS\Desktop\009551ddn.db  
 Dataset Pathname: pass3.1  
 Dataset Creation: Tue Jul 03 17:49:47 2012 by Calc Open-Cased 090629

Dual Induction Calibration Report

Serial-Model: PROBE9-DILG  
 Surface Cal Performed: Tue Jul 03 07:02:50 2012  
 Downhole Cal Performed: Mon Jul 28 12:02:56 2008  
 After Survey Verification Performed: Fri Jun 01 07:32:39 2012

Surface Calibration								
Loop:	Readings			References			Results	
	Air	Loop		Air	Loop		m	b
Deep	-0.014	0.629	V	0.000	400.000	mmho/m	540.000	-12.000
Medium	0.039	0.728	V	0.000	464.000	mmho/m	540.000	-16.000
Internal:	Zero	Cal		Zero	Cal		m	b
Deep	0.011	0.610	V	0.000	400.000	mmho/m	667.135	-7.256
Medium	0.005	0.712	V	0.000	464.000	mmho/m	655.677	-3.102

Downhole Calibration								
	Readings			References			Results	
	Zero	Cal		Zero	Cal		m'	b'
Deep	0.000	0.000	mmho/m	14.508	388.384	mmho/m	1.000	0.000
Medium	0.000	0.000	mmho/m	166.367	504.400	mmho/m	1.000	0.000
LL3		7.500	V		1400.000	Ohm-m		
		0.000	V		20.000	Ohm-m		
		-7.200	V		3970.000	mmho-m		

After Survey Verification								
	Readings			Targets			Results	
	Zero	Cal		Zero	Cal		m'	b'
Deep	0.000	0.000	mmho/m	0.000	0.000	mmho/m	0.000	0.000
Medium	0.000	0.000	mmho/m	0.000	0.000	mmho/m	0.000	0.000
LL3		1.000	Ohm-m		1.000	Ohm-m		

LL3

1.000 Ohm-m  
0.000 Ohm-m  
1.000 mmho-m

1.000 Ohm-m  
0.000 Ohm-m  
1.000 mmho-m

## Compensated Density Calibration Report

Serial-Model: GEAR2-GEARHART  
Source / Verifier: 147 / 147  
Master Calibration Performed: Wed Jun 27 04:03:46 2012

## Master Calibration

	Density		Far Detector	Near Detector	
Magnesium	1.710	g/cc	1203.63	642.89	cps
Aluminum	2.590	g/cc	267.51	439.63	cps
Spine Angle = 75.82			Density/Spine Ratio = 0.567		
	Size		Reading		
Small Ring	7.90	in	4.59	V	
Large Ring	14.00	in	6.70	V	

## Compensated Neutron Calibration Report

Serial Number: NUE\_2I  
Tool Model: G

## CALIBRATION

Detector	Readings		Target		Normalization
Short Space	1.00	cps	1.00	cps	1.0000
Long Space	1.00	cps	1.00	cps	1.0000

## Gamma Ray Calibration Report

Serial Number: GR5  
Tool Model: OPEN  
Performed: Tue Jul 03 07:18:40 2012

Calibrator Value: 1.0 GAPI

Background Reading: 0.0 cps  
Calibrator Reading: 1.0 cps

Sensitivity: 0.7500 GAPI/cps