



DIGITAL LOG (785) 625-3858

Microresistivity Log

15-153-20892-00-00

API No. _____
 Company **Murfin Drilling Company, Inc.**
 Well **Schroeder #1-25**
 Field **Wildcat**
 County **Rawlins** State **Kansas**
 Location **NW SW SW
 900' FSL / 330' FWL**
 Sec: **25** Twp: **5S** Rge: **33W**
 Other Services
 CNL / CDL
 DIL / BHCS

Permanent Datum Ground Level Elevation 3103
 Log Measured From Kelly Bushing 5 Ft. Above Perm. Datum
 Drilling Measured From Kelly Bushing

Date	1/30/2012		
Run Number	Two		
Depth Driller	4725		
Depth Logger	4728		
Bottom Logged Interval	4727		
Top Log Interval	3600		
Casing Driller	8.625 @ 267		
Casing Logger	264		
Bit Size	7.875		
Type Fluid in Hole	Chemical		
Salinity, ppm CL	4300		
Density / Viscosity	9.1 59		
pH / Fluid Loss	10.5 7.6		
Source of Sample	Flowline		
Rm @ Meas. Temp	0.50 @ 55		
Rmf @ Meas. Temp	0.38 @ 55		
Rmc @ Meas. Temp	0.68 @ 55		
Source of Rmf / Rmc	Charts		
Rm @ BHT	0.22 @ 123		
Operating Rig Time	5 Hours		
Max Rec. Temp. F	123		
Equipment Number	17		
Location	Hays		
Recorded By	R. Barnhart		
Witnessed By	Steve Miller		

<<< Fold Here >>>

All interpretations are opinions based on inferences from electrical or other measurements and we cannot and do not guarantee the accuracy or correctness of any interpretation, and we shall not, except in the case of gross or willful negligence on our part, be liable or responsible for any loss, costs, damages, or expenses incurred or sustained by anyone resulting from any interpretation made by any of our officers, agents or employees. These interpretations are also subject to our general terms and conditions set out in our current Price Schedule.

Comments

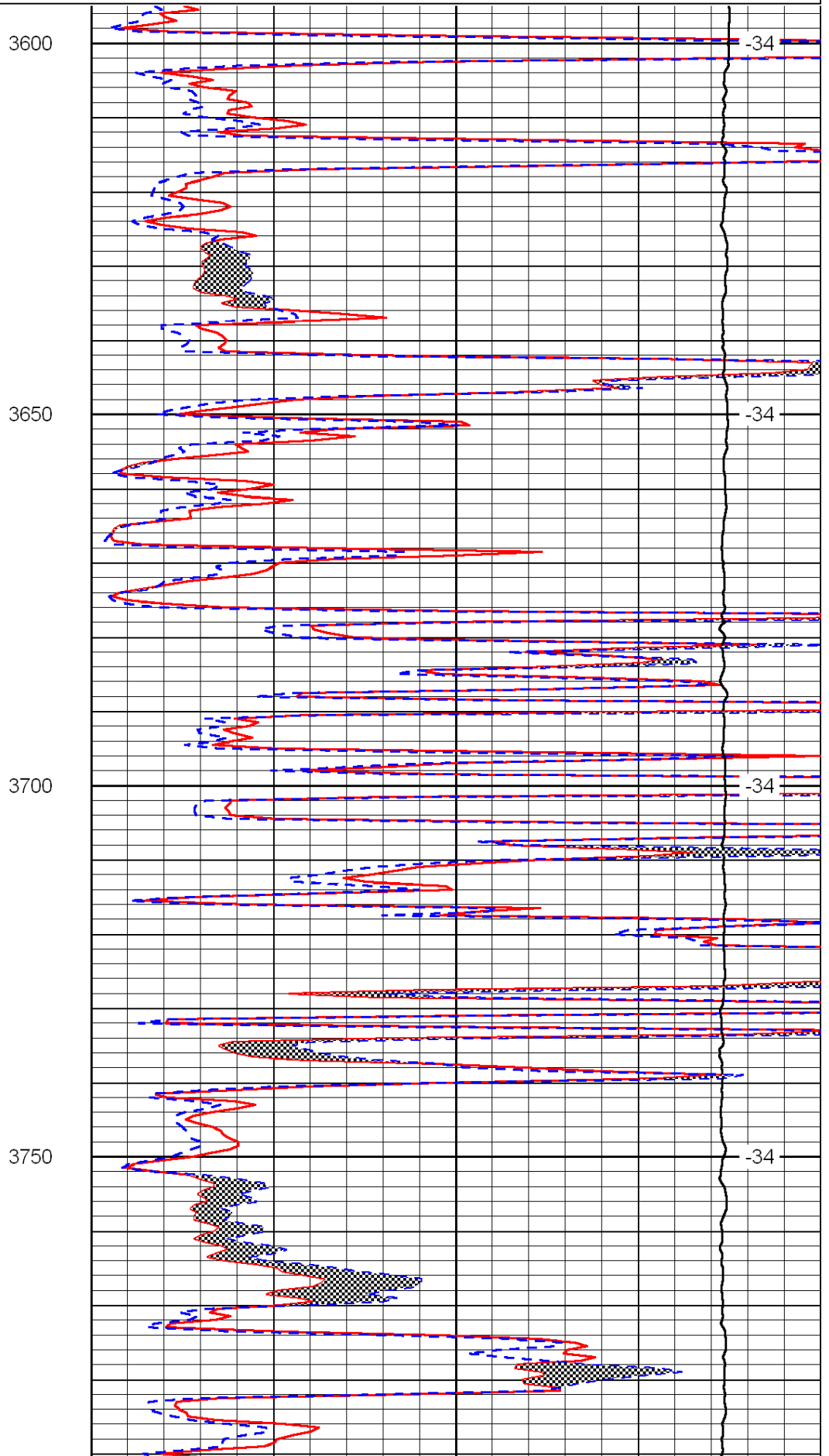
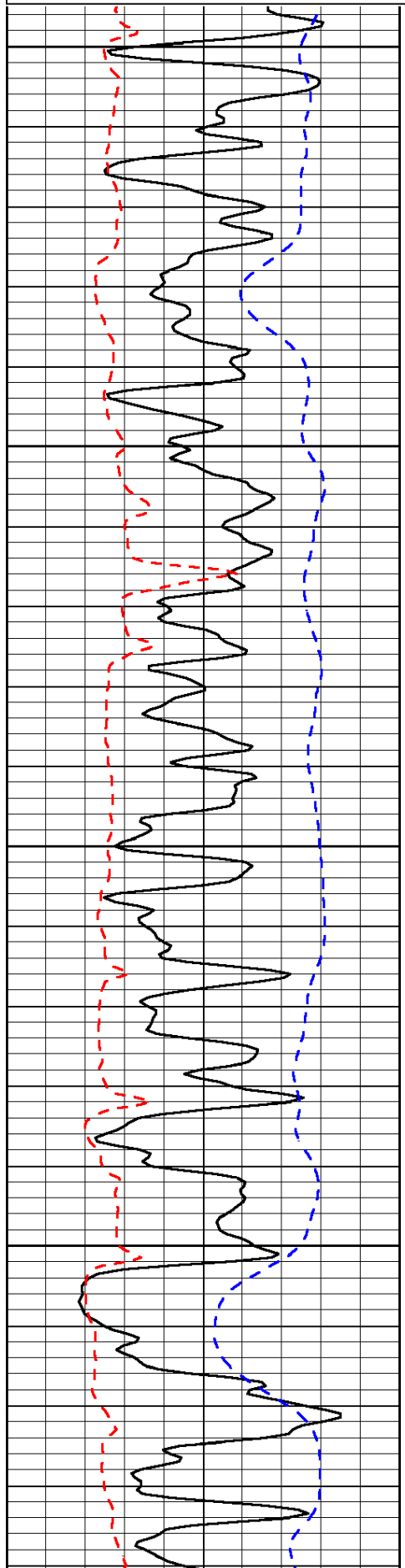
Thank you for using Log-Tech, Inc.
 (785) 625-3858
 Colby, KS:
 N to County Line:
 3E, 1N, 1E, N1/4, E into

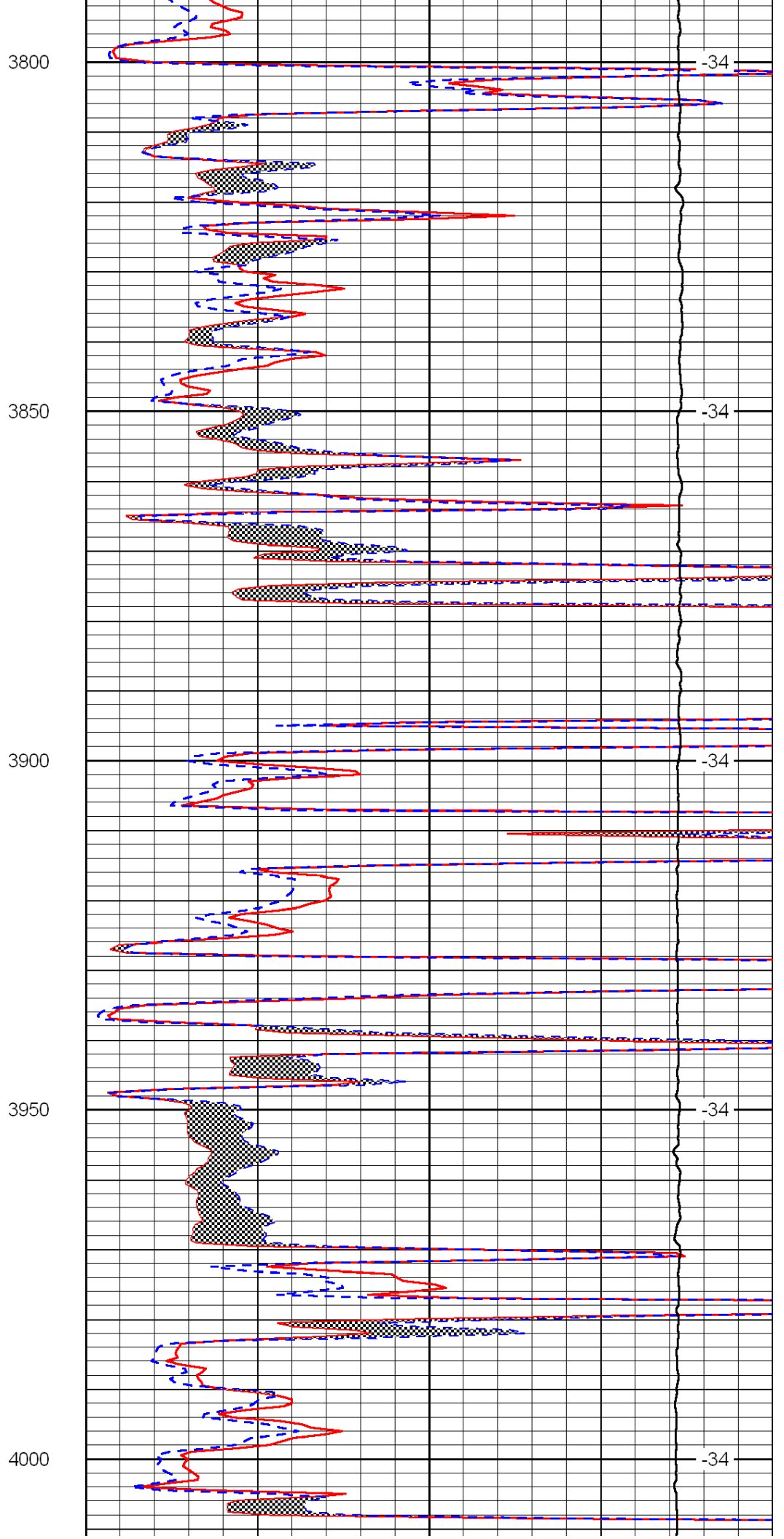
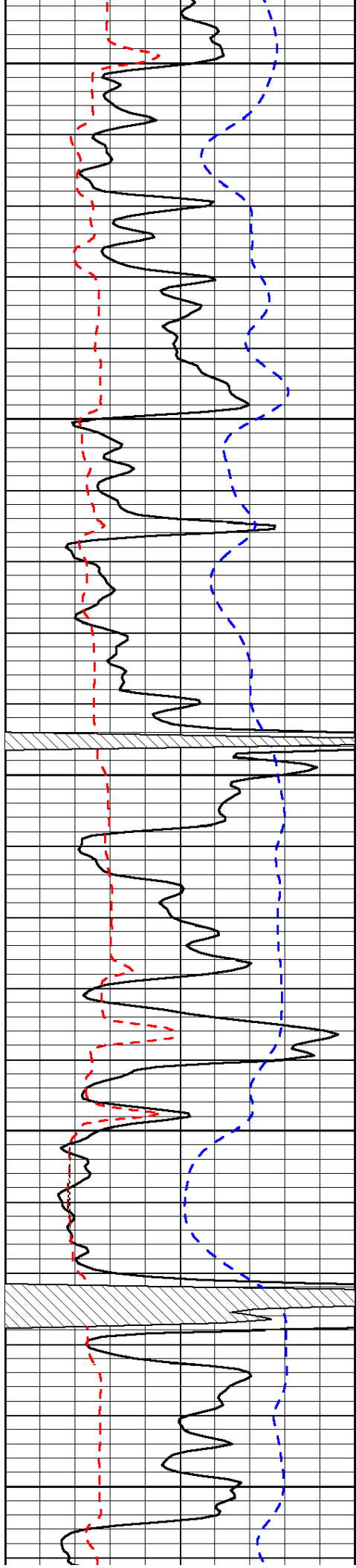
Database File: c:\warrior\data\murfin_schroeder #1-25\murfinhd.db
 Dataset Pathname: dil\murmain
 Presentation Format: micro
 Dataset Creation: Mon Jan 30 07:43:59 2012
 Charted by: Depth in Feet scaled 1:240

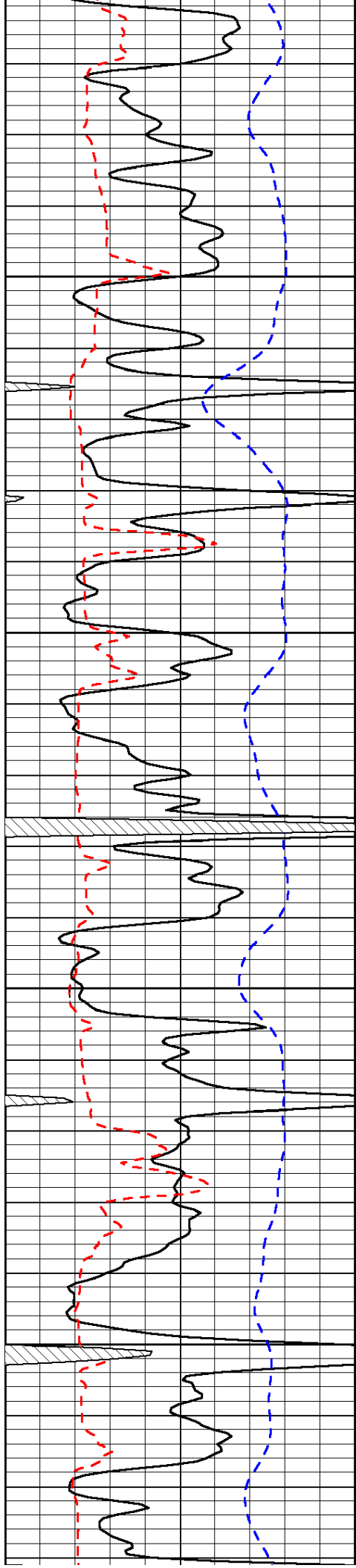
0	Gamma Ray	150
6	Micro Log Caliper (GAPI)	16
-200	SP (mV)	0

0	Micro Inverse 1 X 1	40
0	Micro Normal 2"	40
15000	Line Weight	0

LSPD





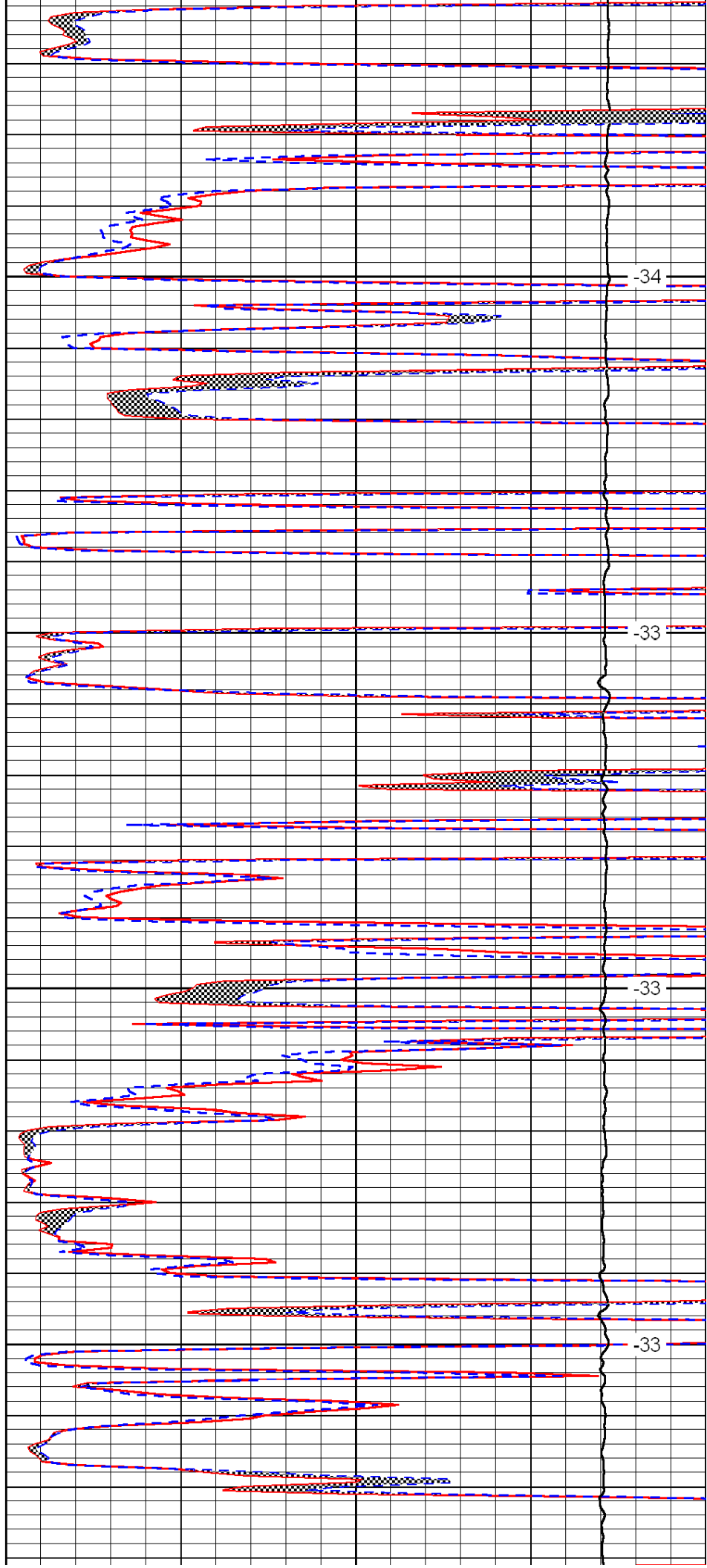


4050

4100

4150

4200

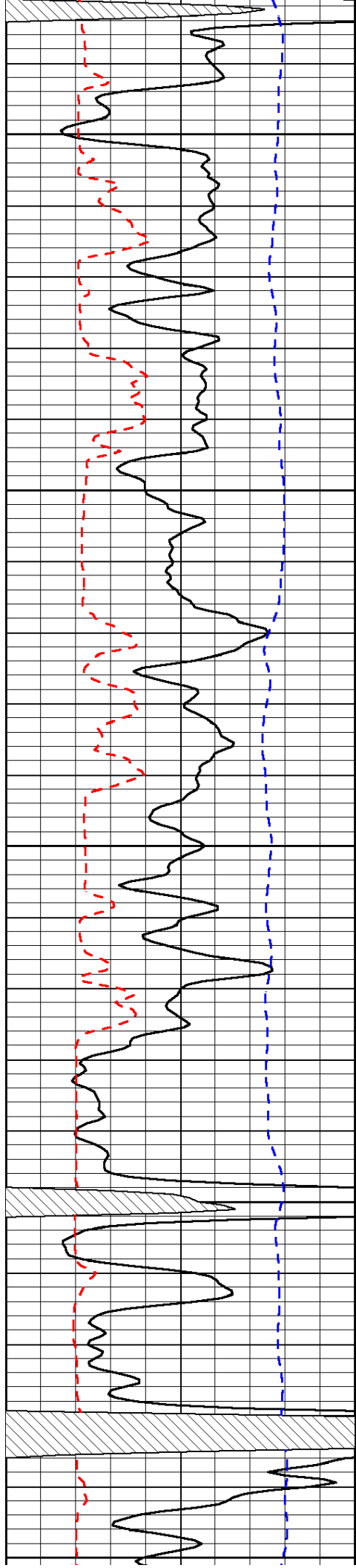


-34

-33

-33

-33



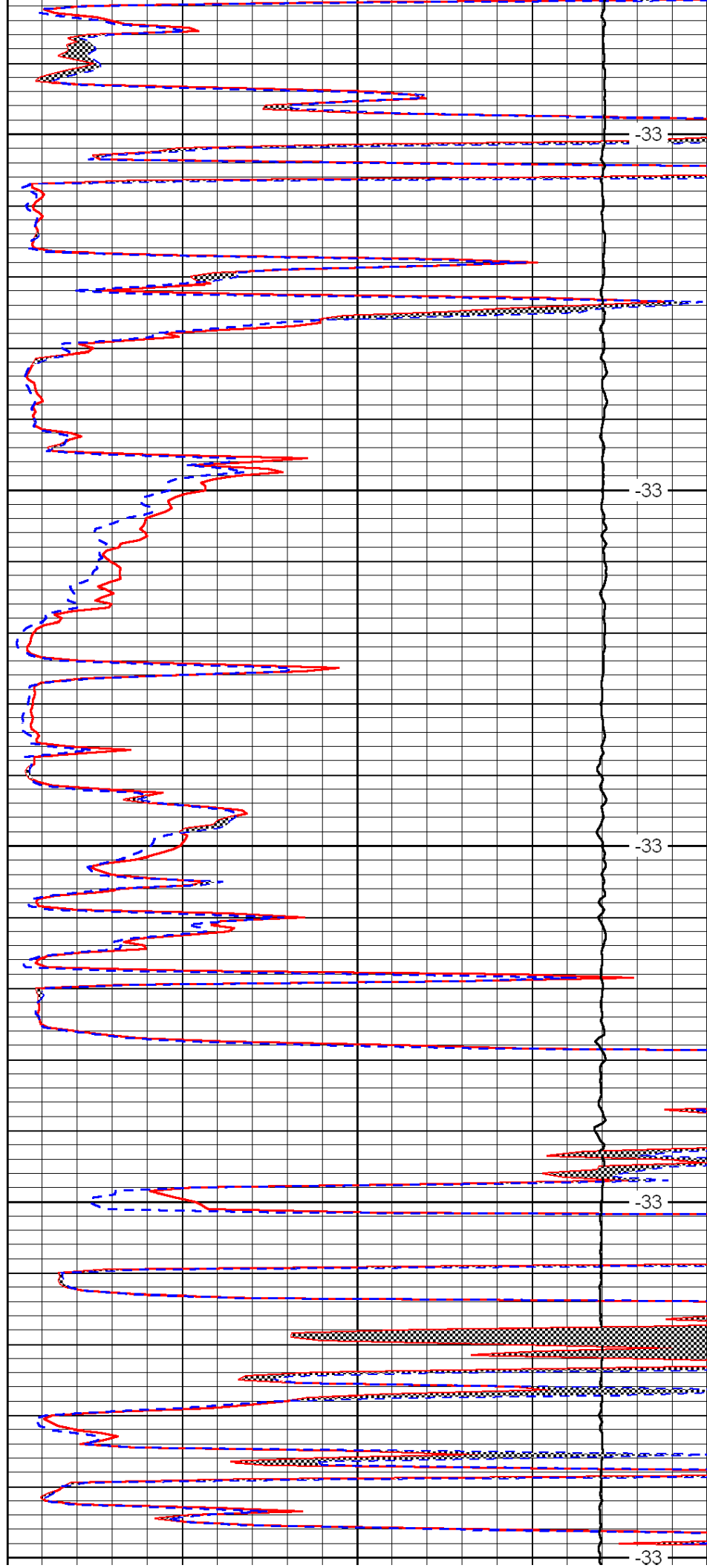
4250

4300

4350

4400

4450



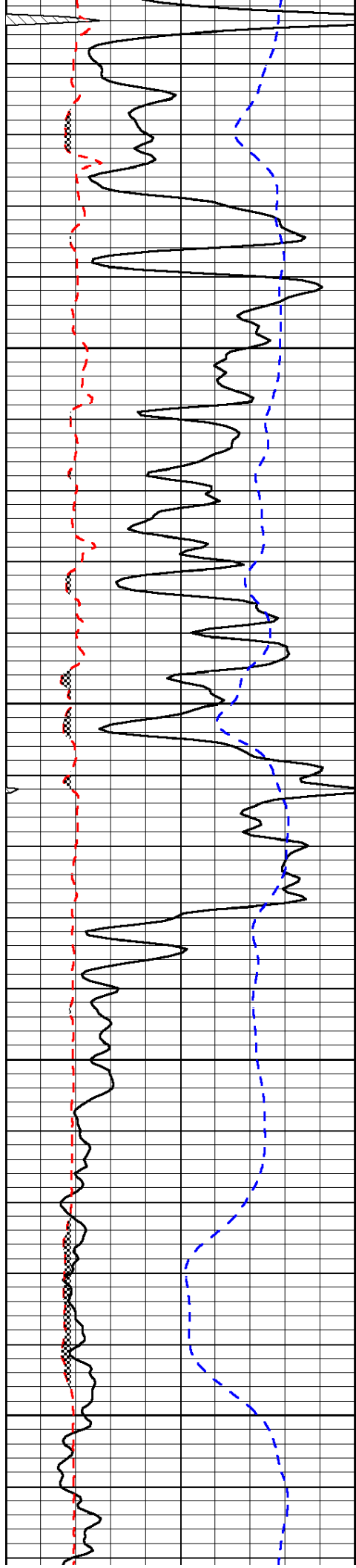
-33

-33

-33

-33

-33

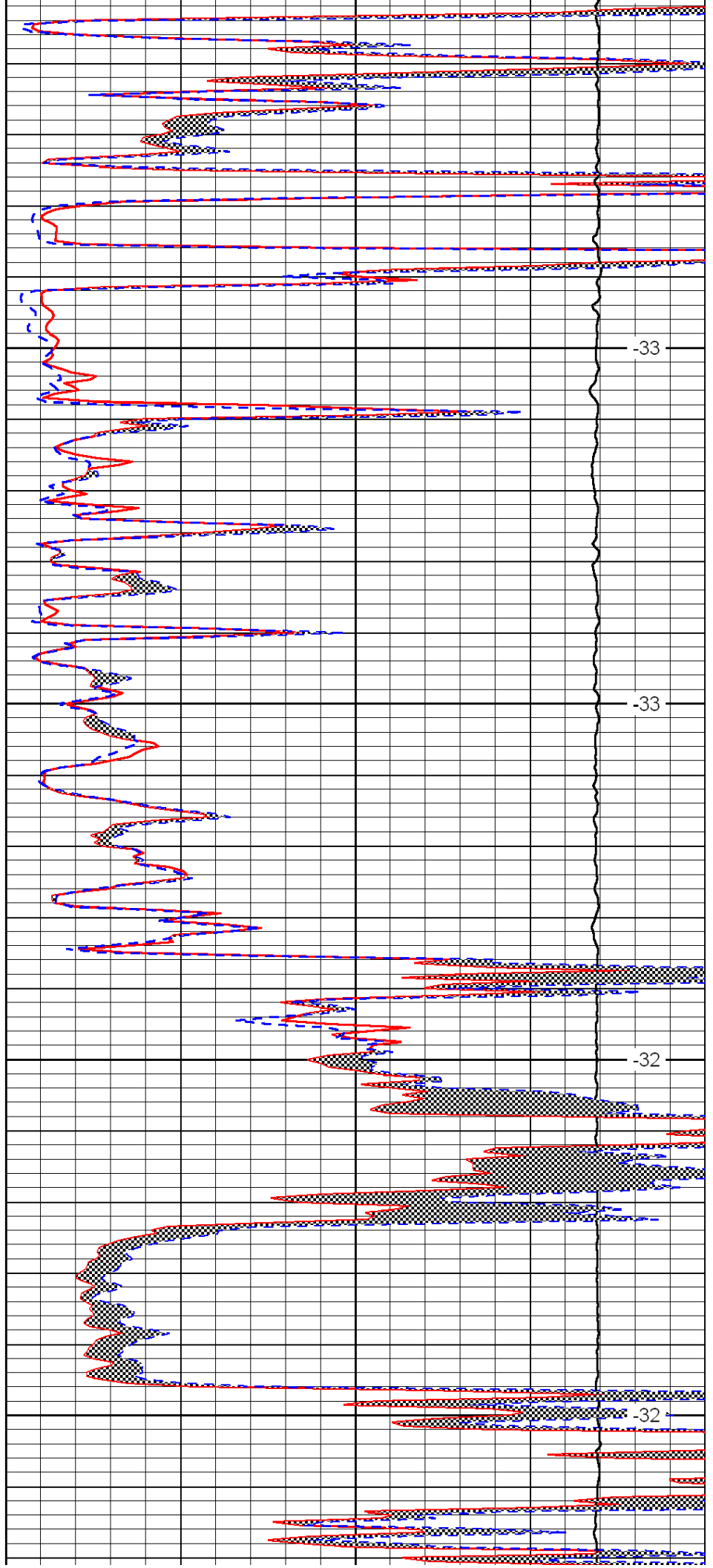


4500

4550

4600

4650

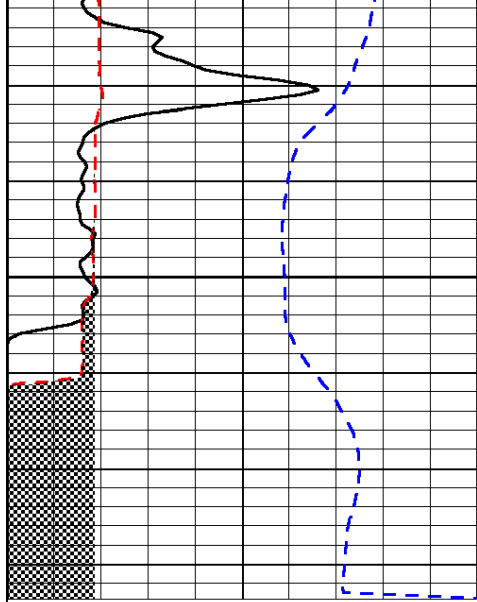


-33

-33

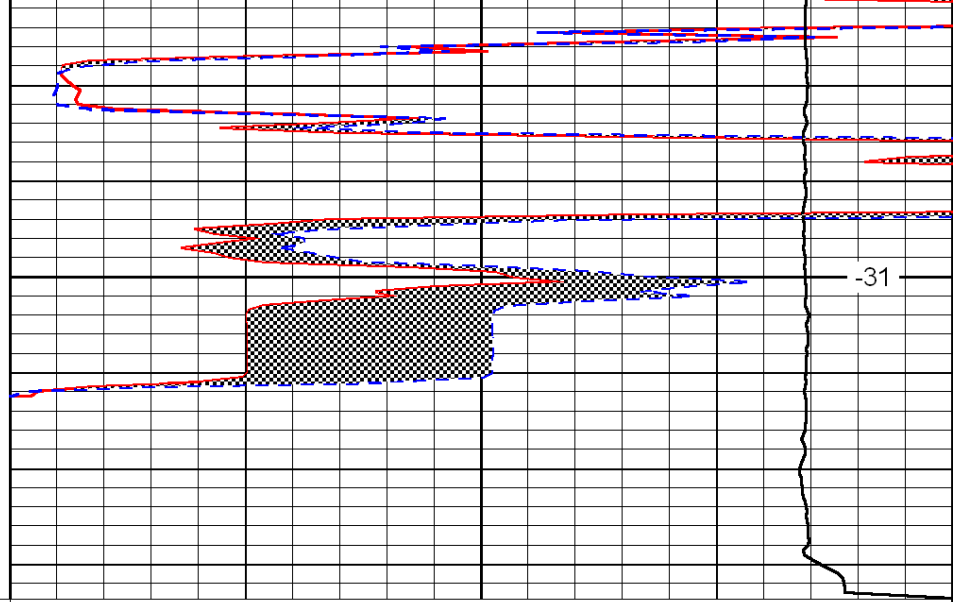
-32

-32



0	Gamma Ray	150
6	Micro Log Caliper (GAPI)	16
-200	SP (mV)	0

4700



0	Micro Inverse 1 X 1	40
0	Micro Normal 2'	40
15000	Line Weight	0

-31

LSPD