



DIGITAL LOG (785) 625-3858

Borehole Compensated
Sonic Log

15-153-20892-00-00

API No. 15-153-20892-00-00
 Company Murfin Drilling Company, Inc.
 Well Schroeder #1-25
 Field Wildcat
 County Rawlins State Kansas
 Location NW SW SW
 900' FSL / 330' FWL
 Sec: 25 Twp: 5S Rge: 33W
 Permanent Datum Ground Level Elevation 3103
 Log Measured From Kelly Bushing 5 Ft. Above Perm. Datum
 Drilling Measured From Kelly Bushing
 Date 1/30/2012
 Run Number Two
 Type Log BHC Sonic
 Depth Driller 4725
 Depth Logger 4728
 Bottom Logged Interval 4717
 Top Logged Interval 250
 Type Fluid In Hole Chemical
 Salinity, PPM CL 4300
 Density 9.1
 Level Full
 Max. Rec. Temp. F 123
 Operating Rig Time 5 Hours
 Equipment -- Location 17 Hays
 Recorded By R. Barnhart
 Witnessed By Steve Miller

Other Services
CNL / CDL
MEL / DIL

Elevation
K.B. 3108
D.F.
G.L. 3103

Borehole Record				Casing Record			
Run No.	Bit	From	To	Size	Wgt.	From	To
1	12.25	00	267	8.625	24#	00	267
2	7.875	267	4725				

<<< Fold Here >>>

All interpretations are opinions based on inferences from electrical or other measurements and we cannot and do not guarantee the accuracy or correctness of any interpretation, and we shall not, except in the case of gross or willful negligence on our part, be liable or responsible for any loss, costs, damages, or expenses incurred or sustained by anyone resulting from any interpretation made by any of our officers, agents or employees. These interpretations are also subject to our general terms and conditions set out in our current Price Schedule.

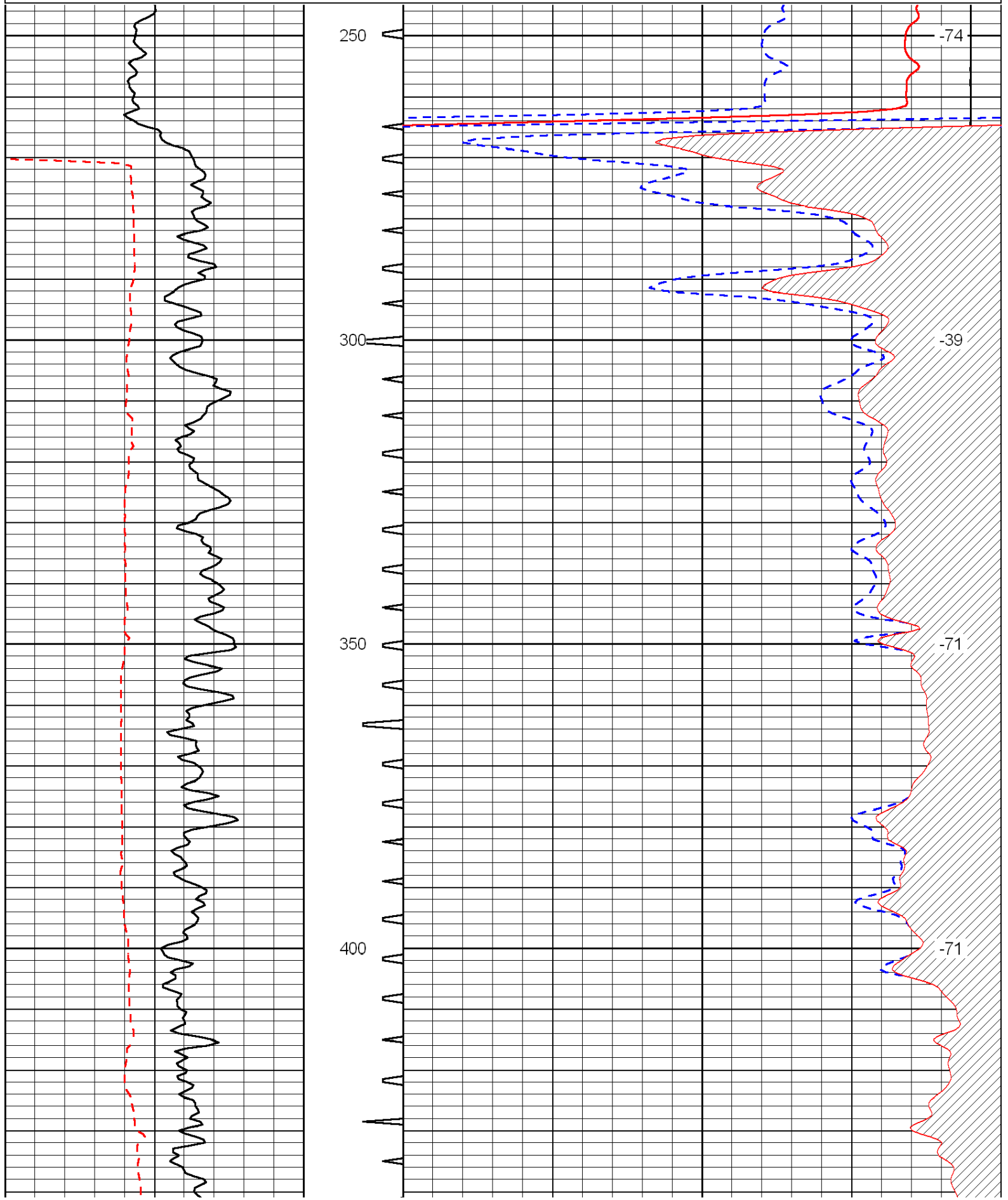
Comments

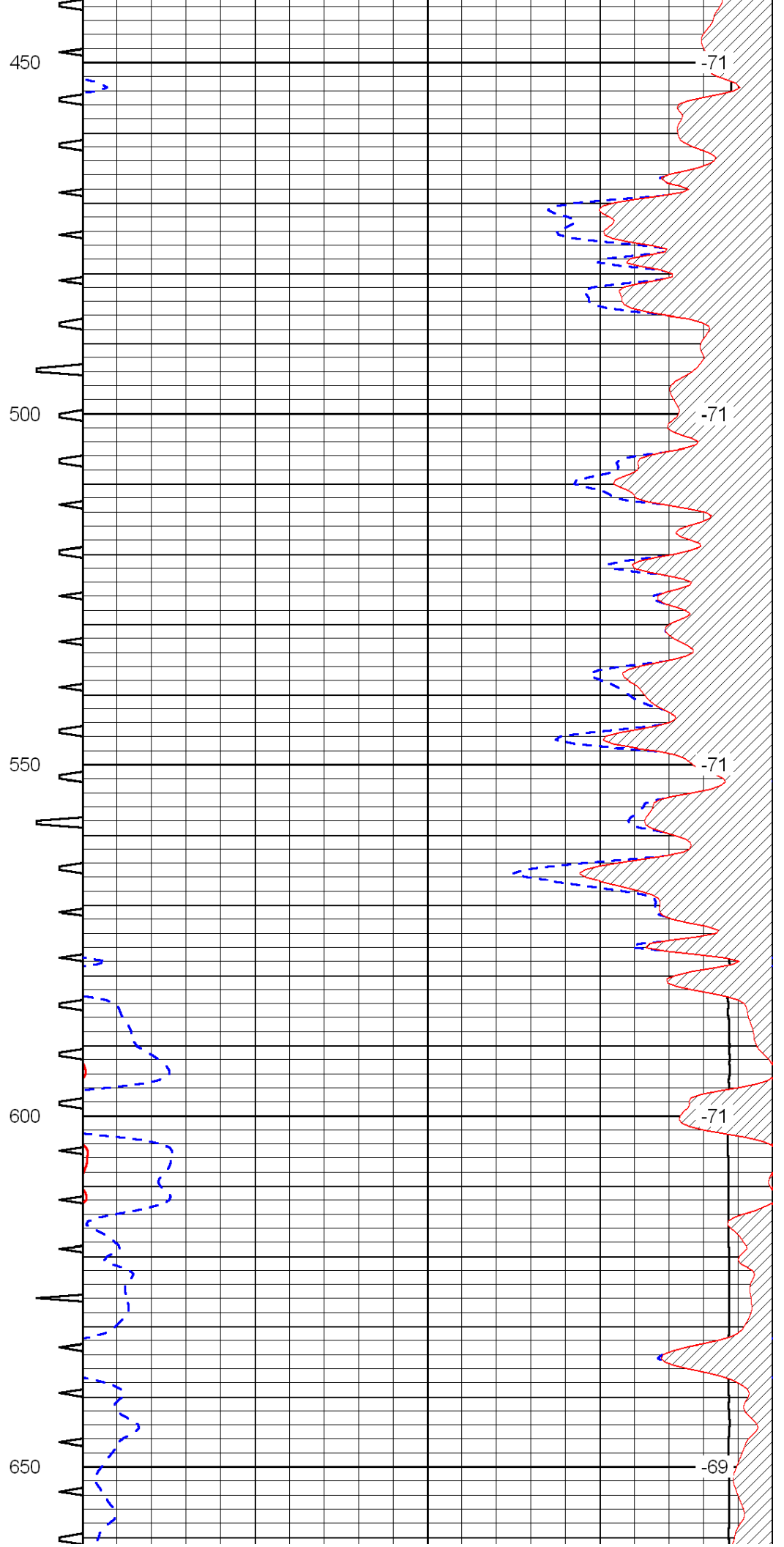
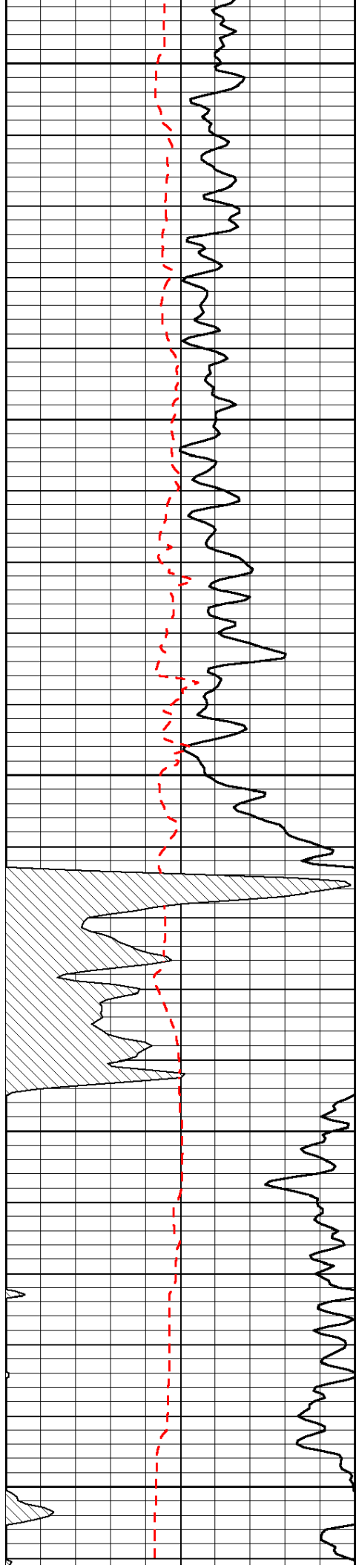
Thank you for using Log-Tech, Inc.
 (785) 625-3858
 Colby, KS:
 N to County Line:
 3E, 1N, 1E, N1/4, E into

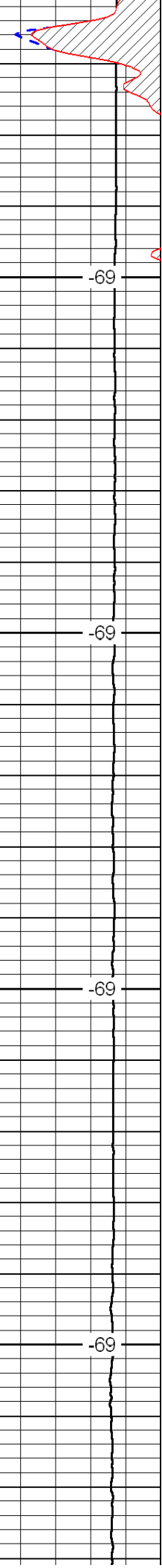
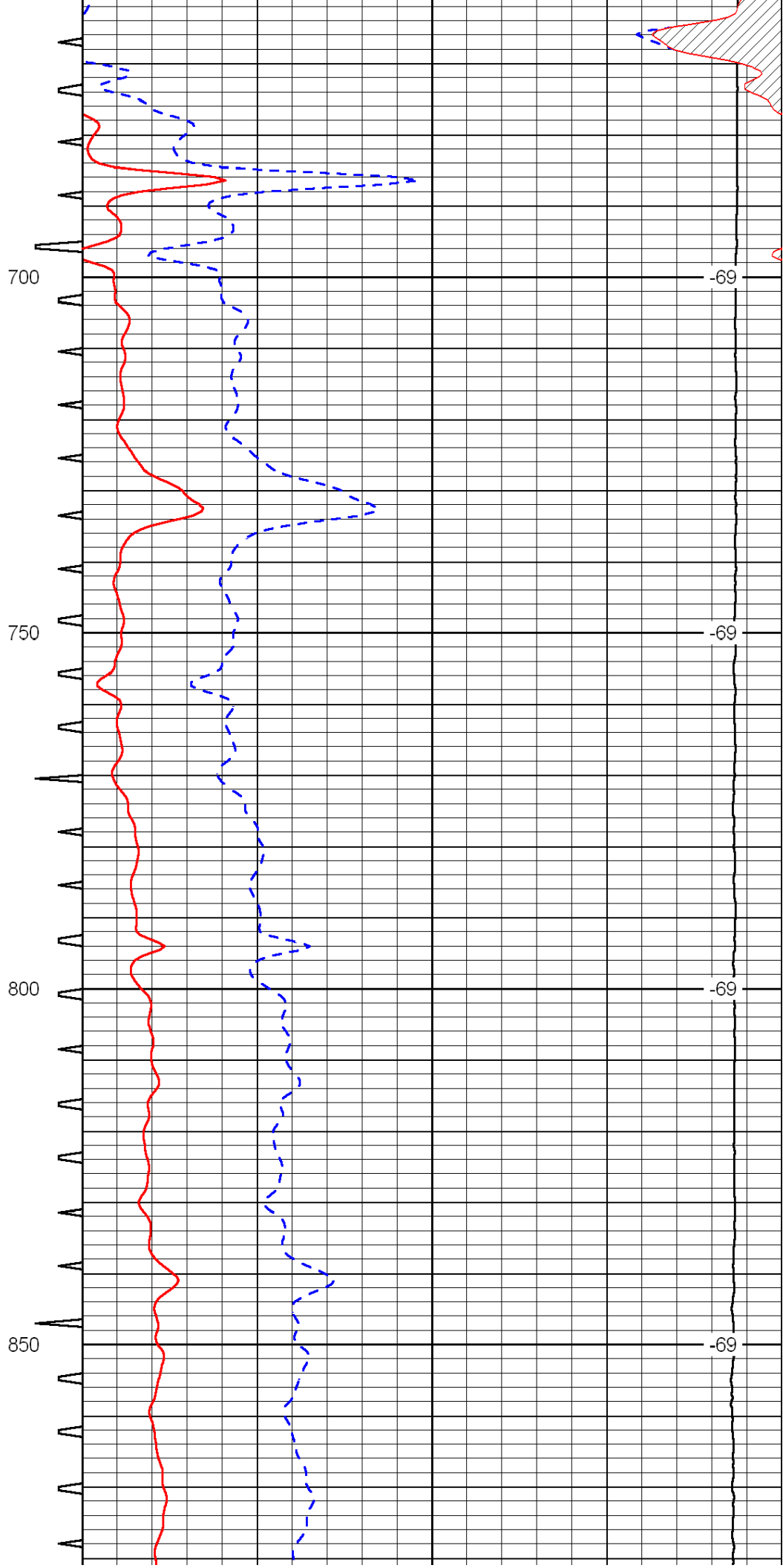
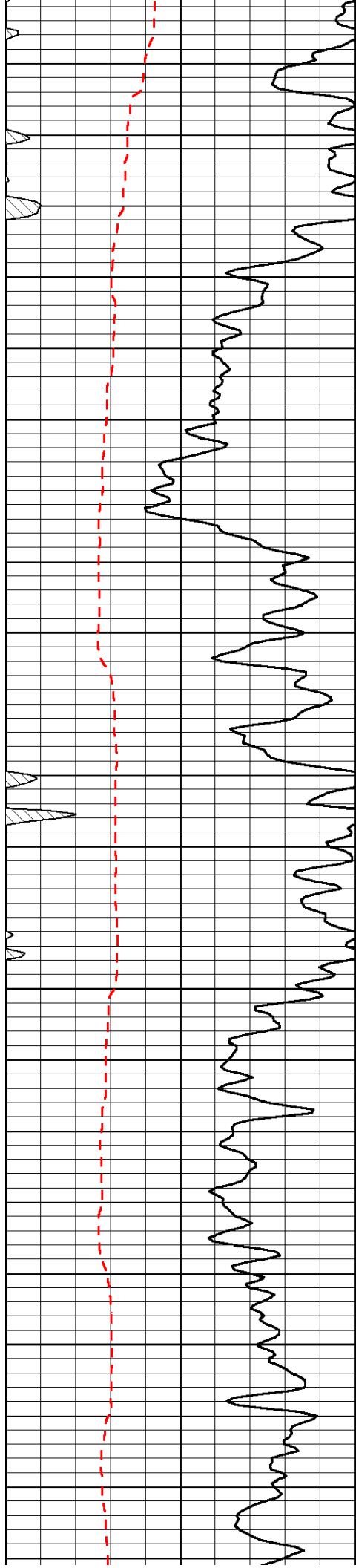
Database File: c:\warrior\data\murfin_schroeder #1-25\murfinhd.db
 Dataset Pathname: dil/murmain
 Presentation Format: sonic
 Dataset Creation: Mon Jan 30 07:43:59 2012
 Charted by: Depth in Feet scaled 1:240

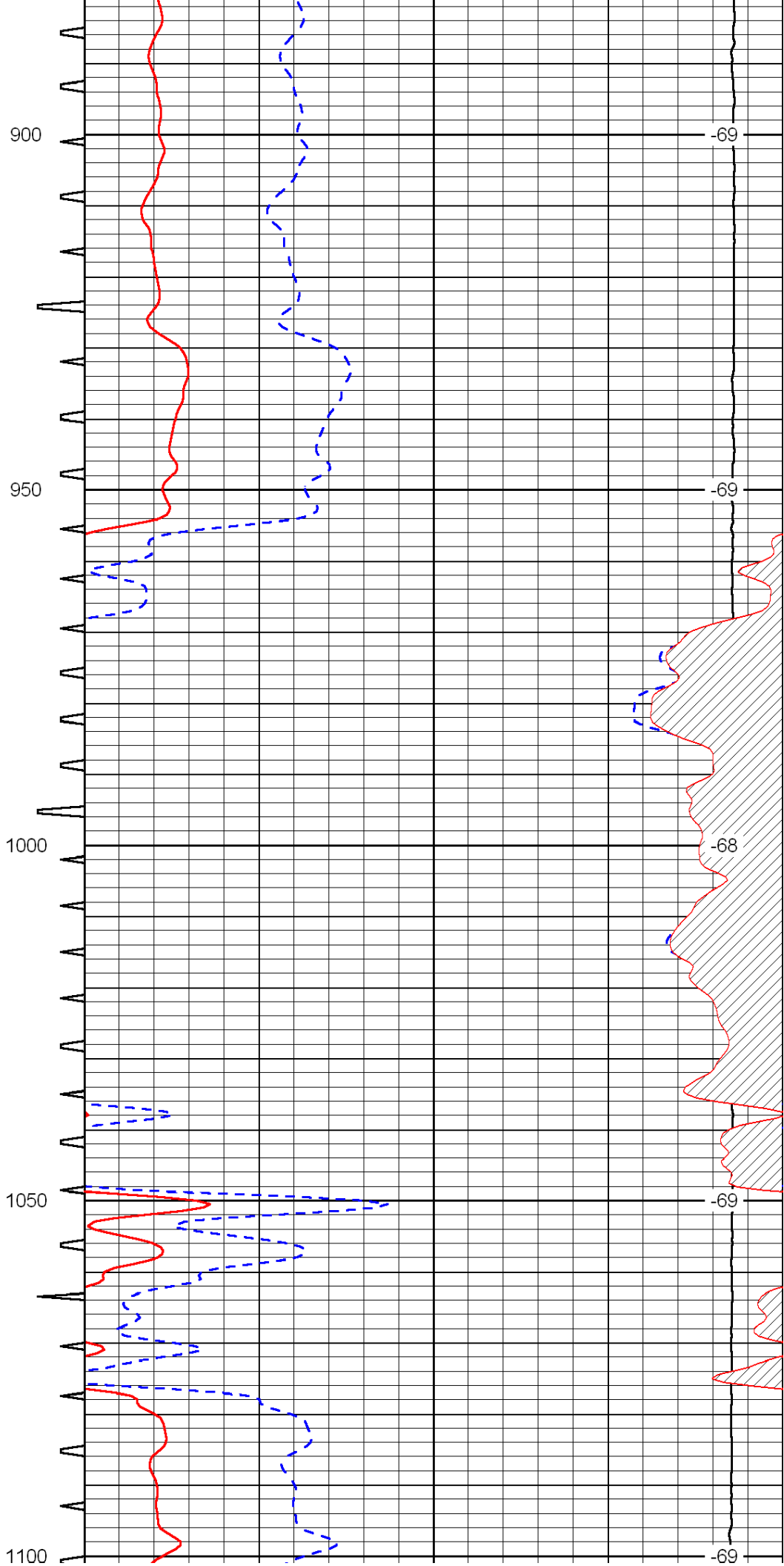
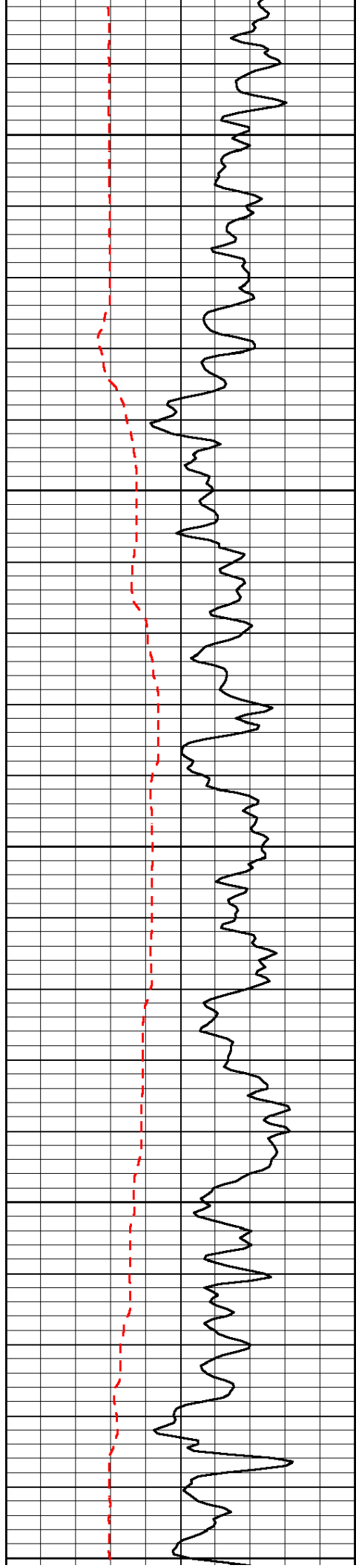
0	Gamma Ray	150	Sonic Int	140	Delta Time (usec/ft)	40
150	Gamma Ray	300	5	0	SPOR	-10
6	Caliper (GAPI)	16		15000	LTEN (lb)	0

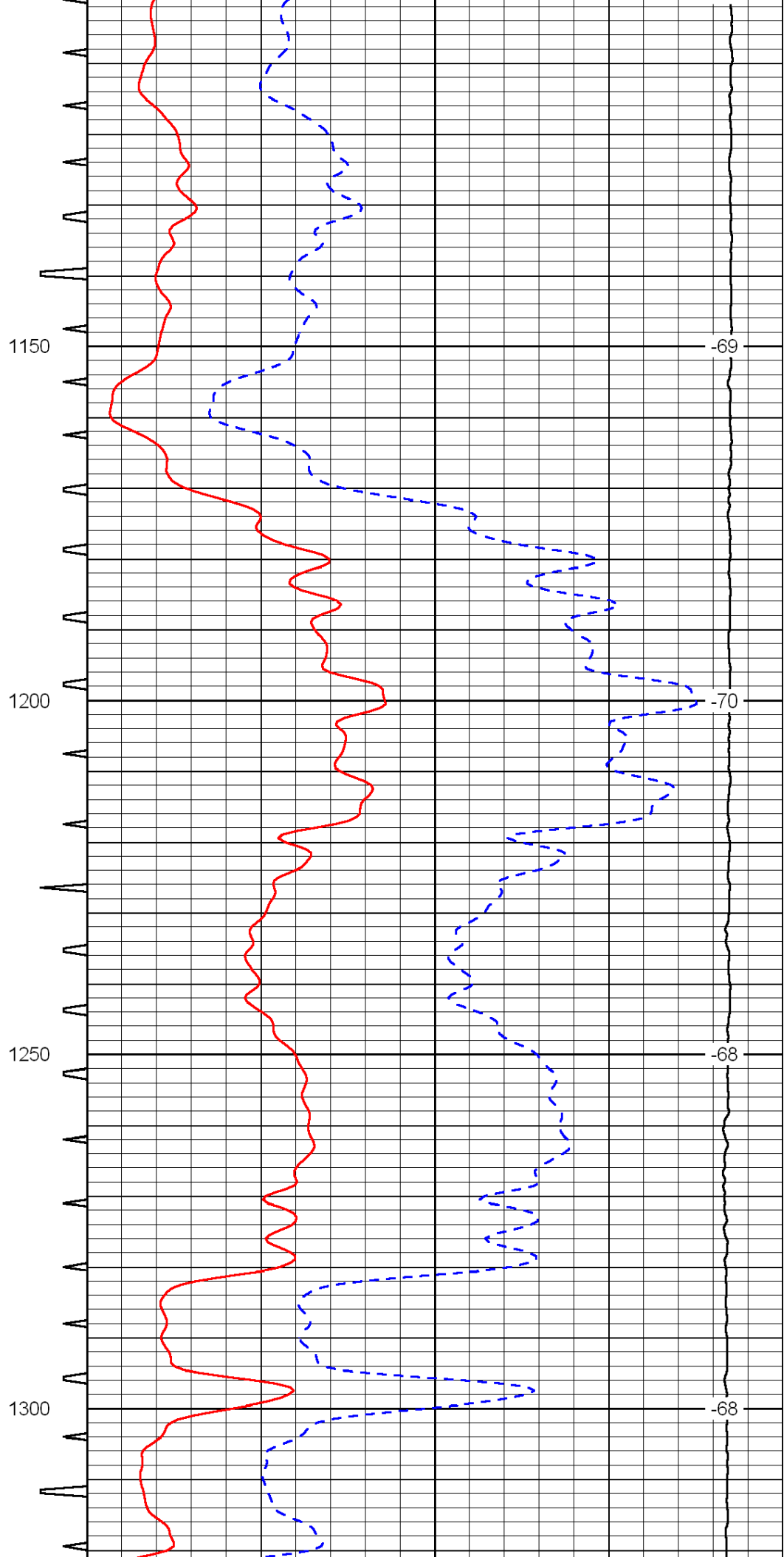
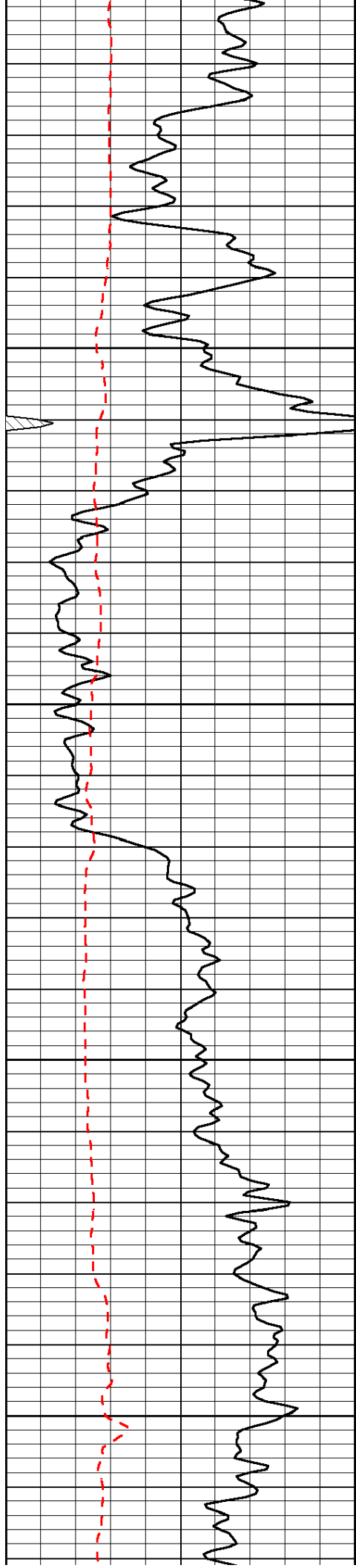
LSPD

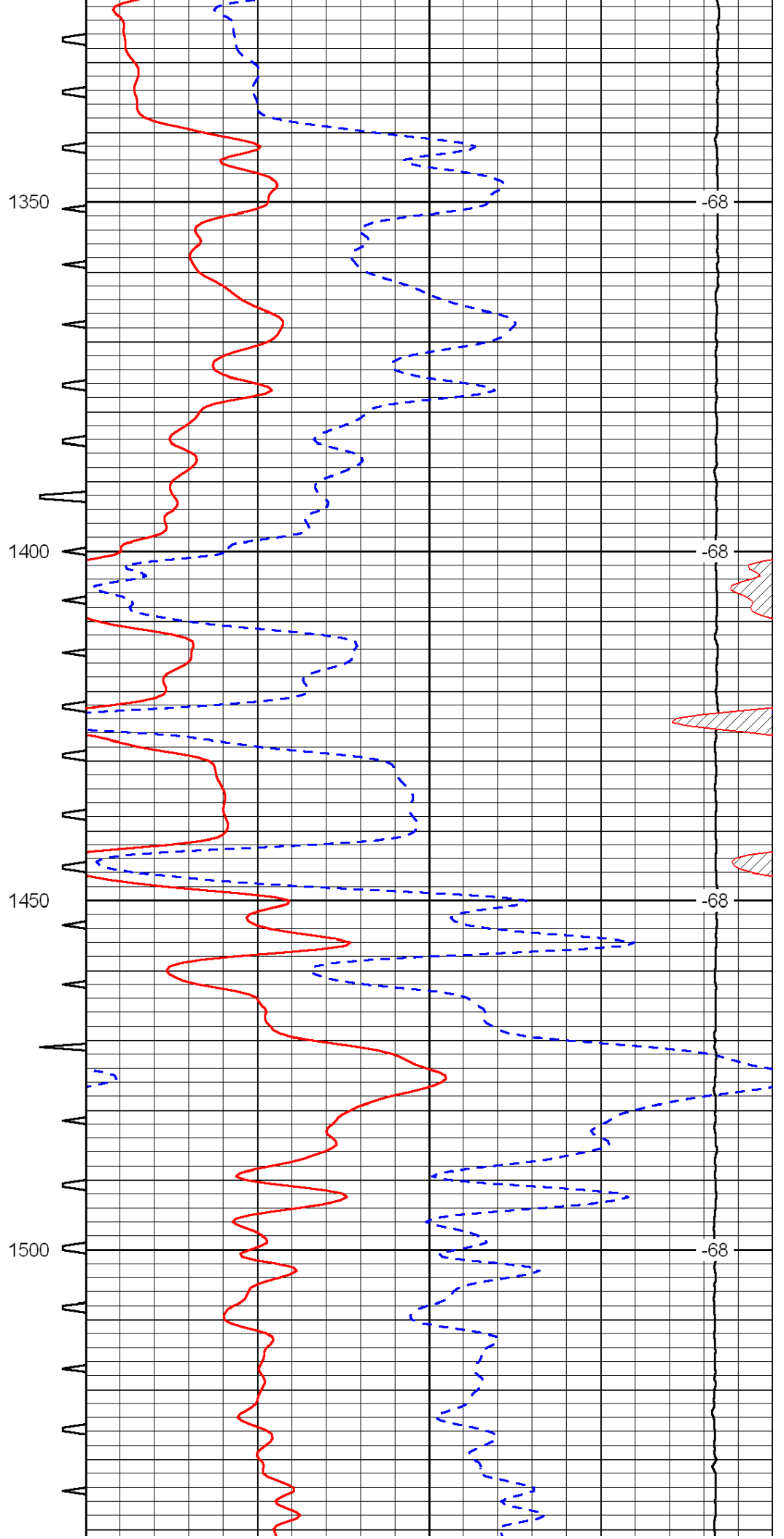
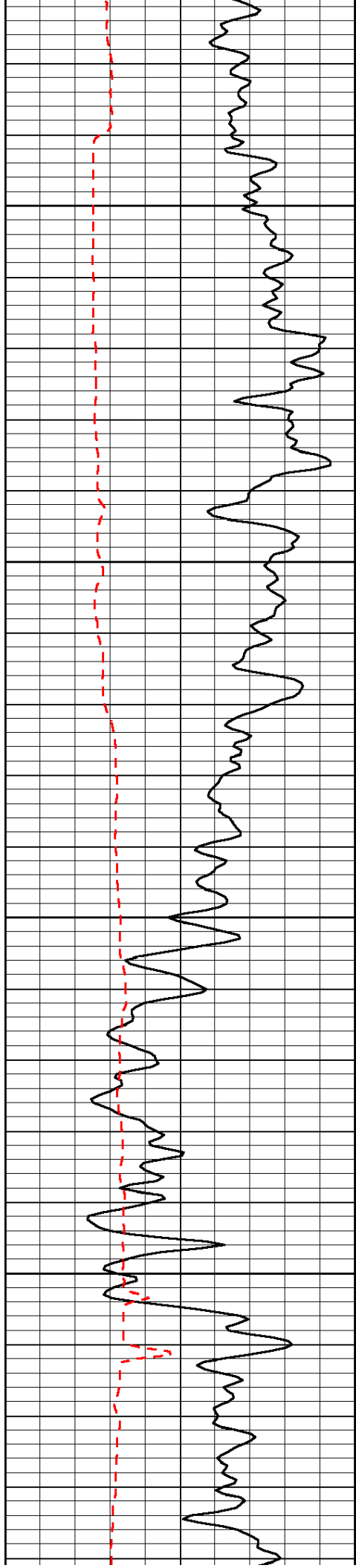


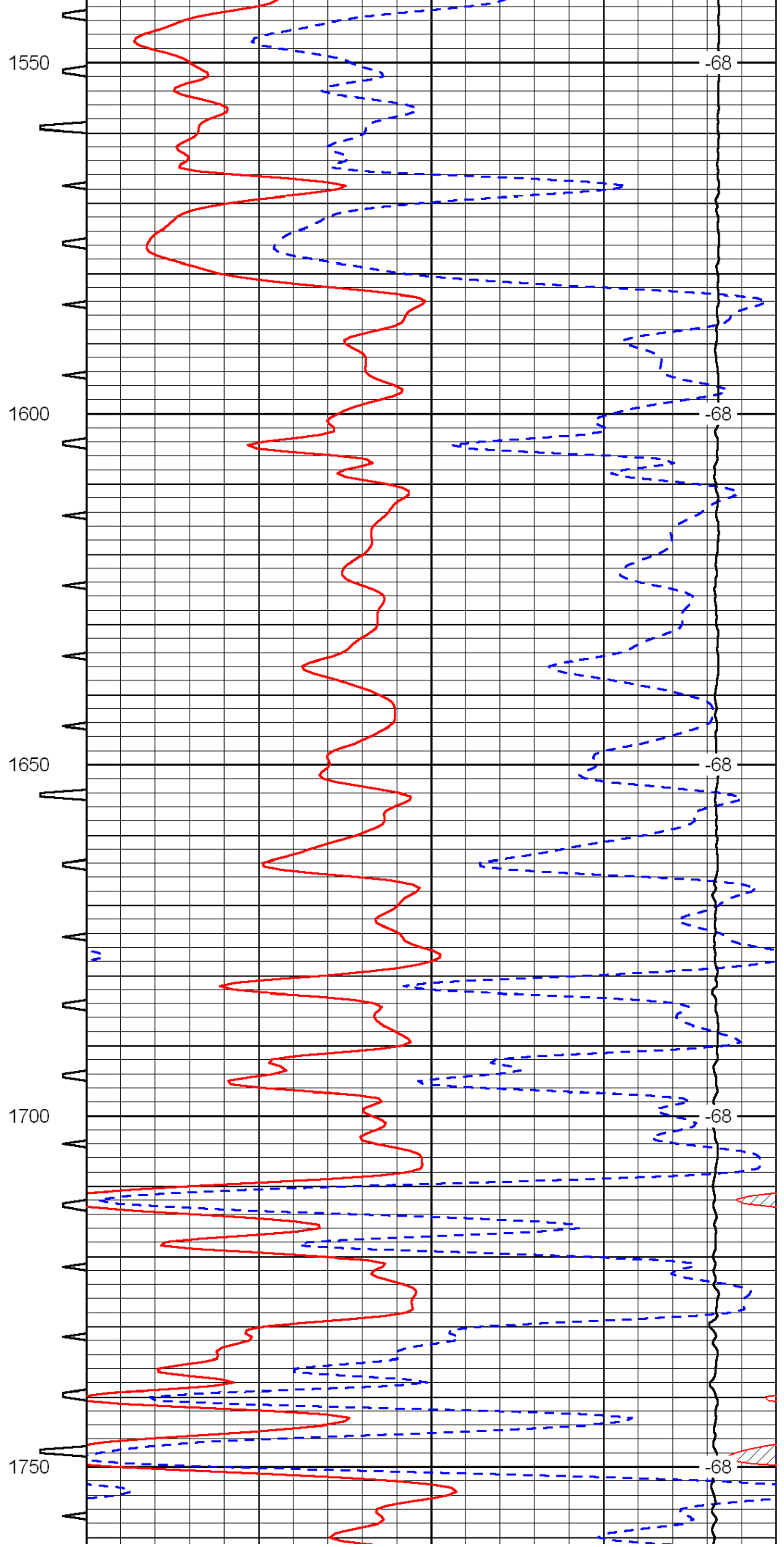
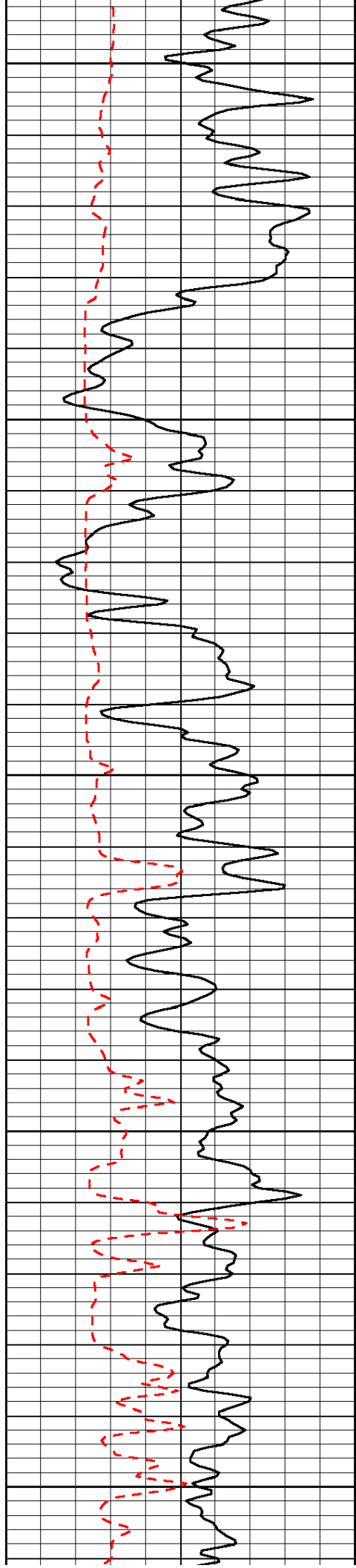


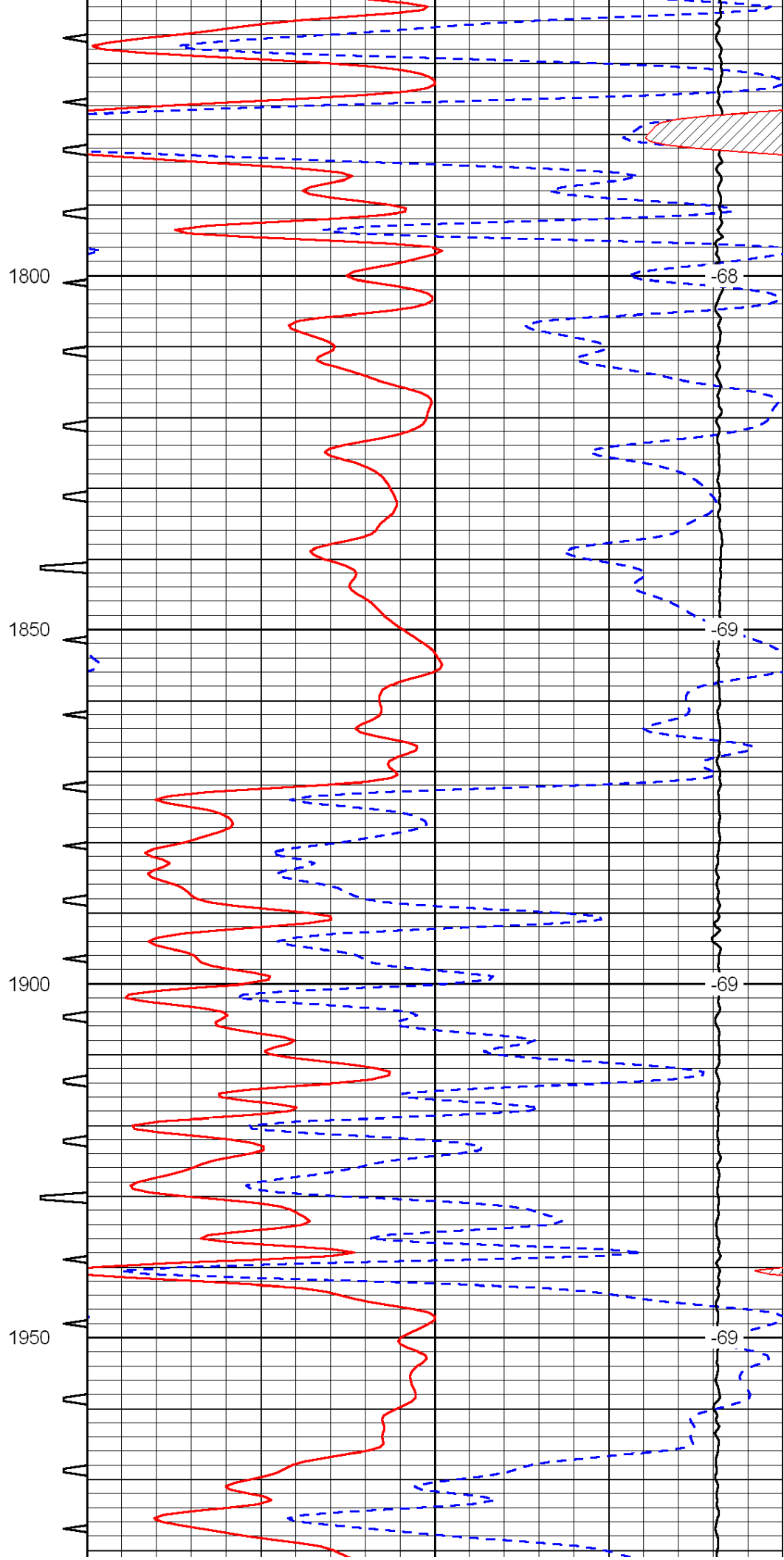
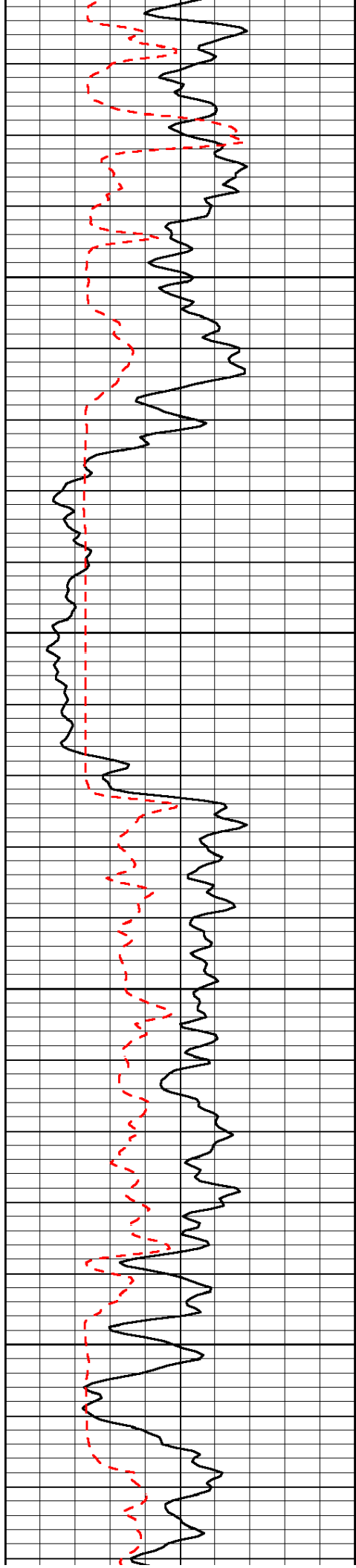


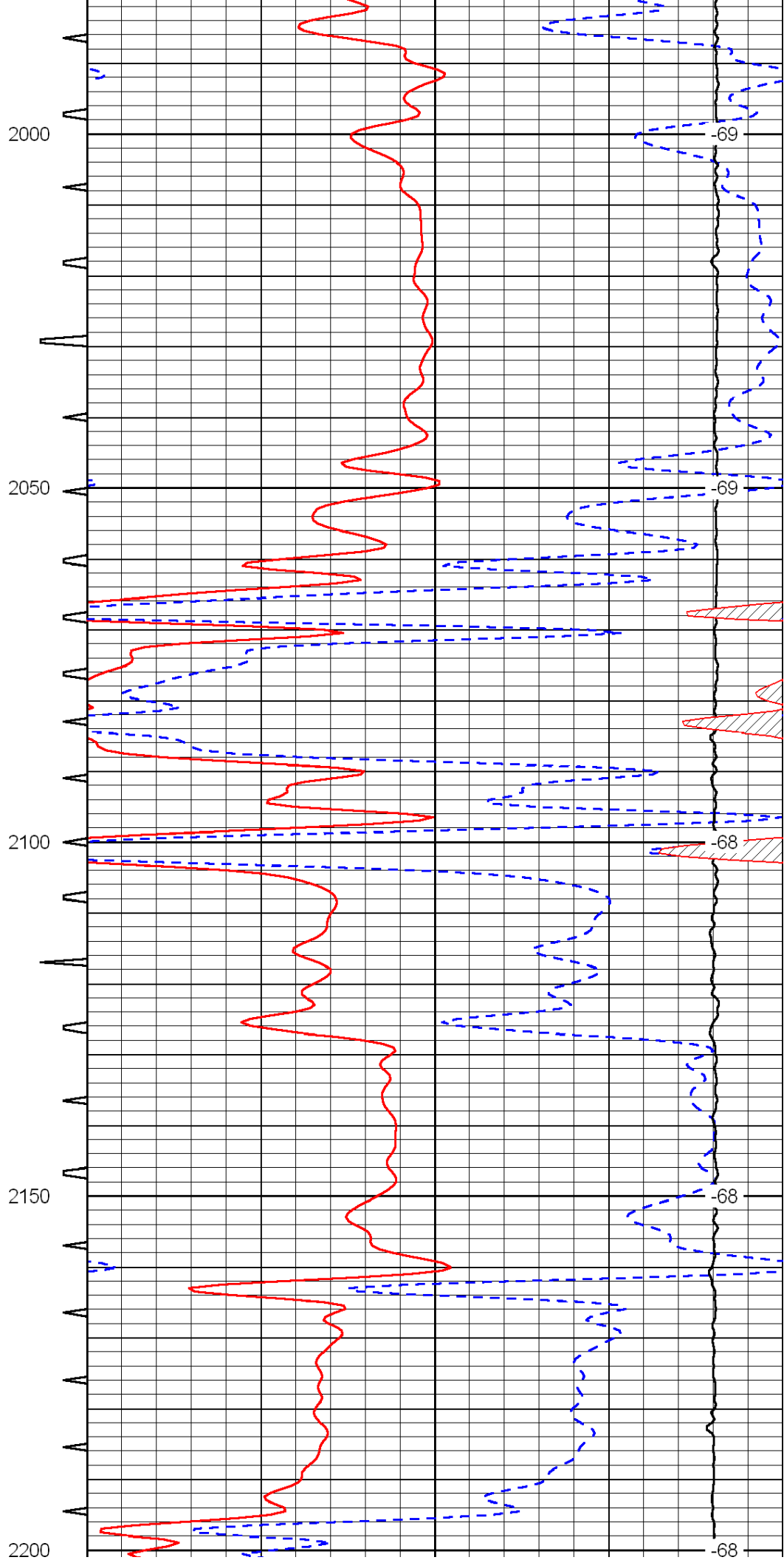
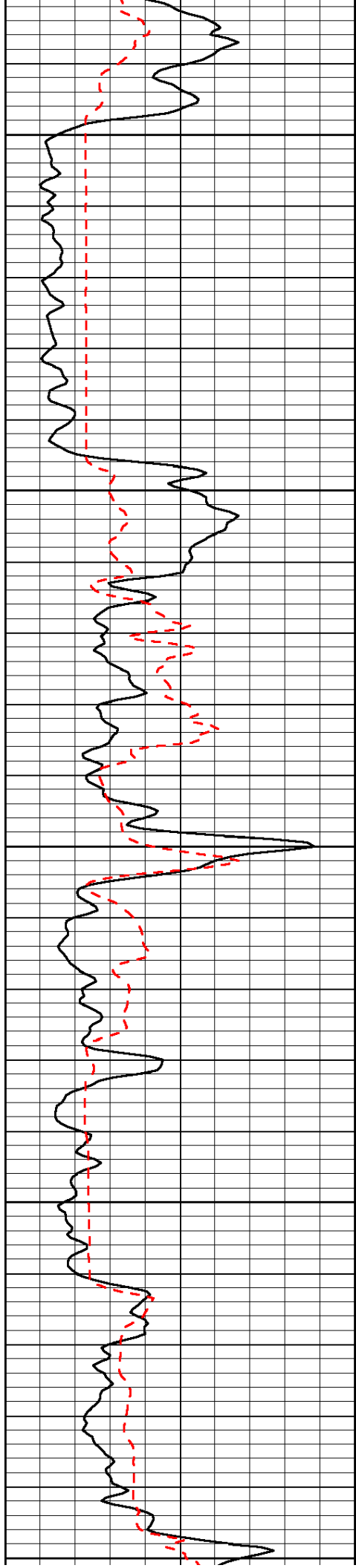


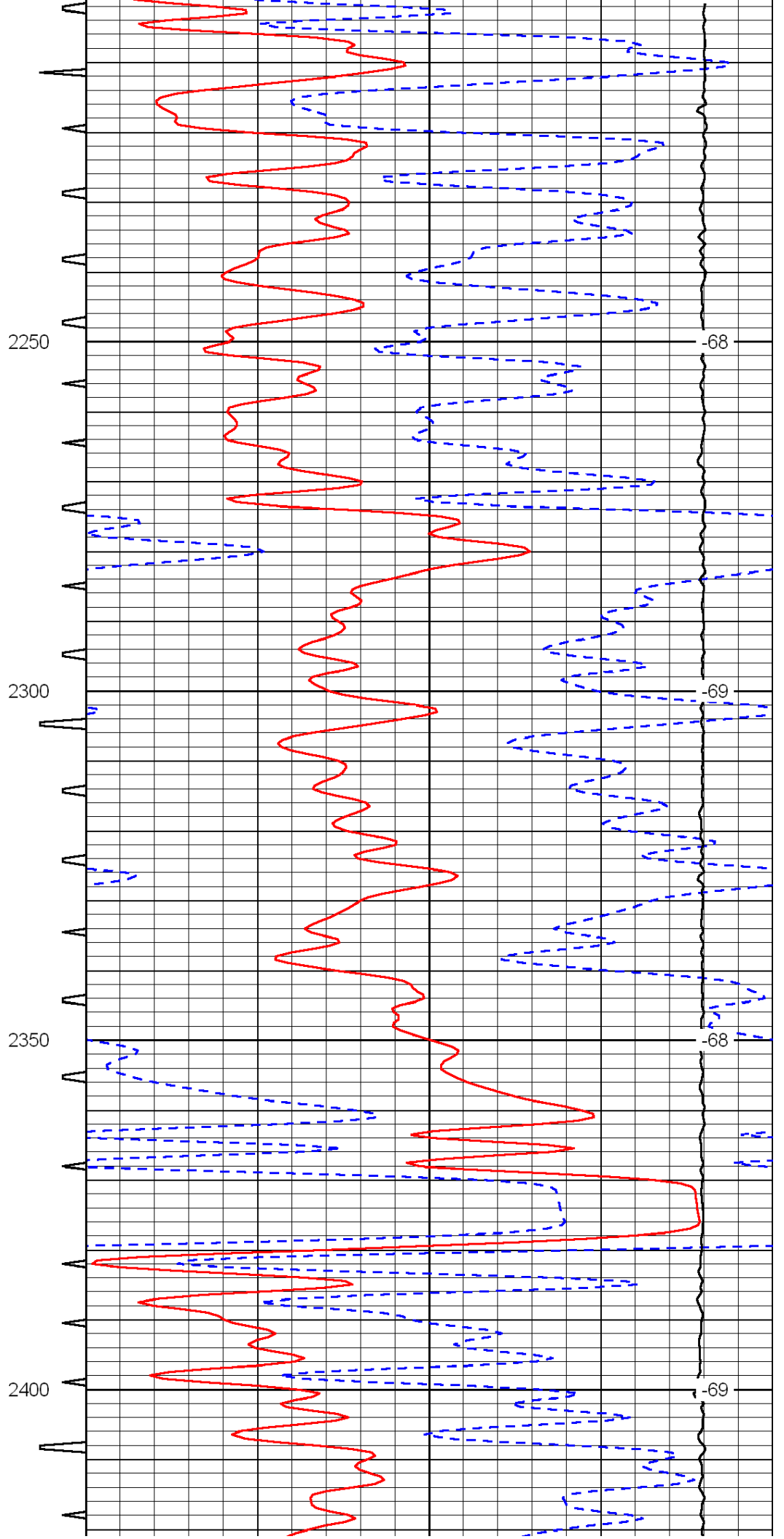
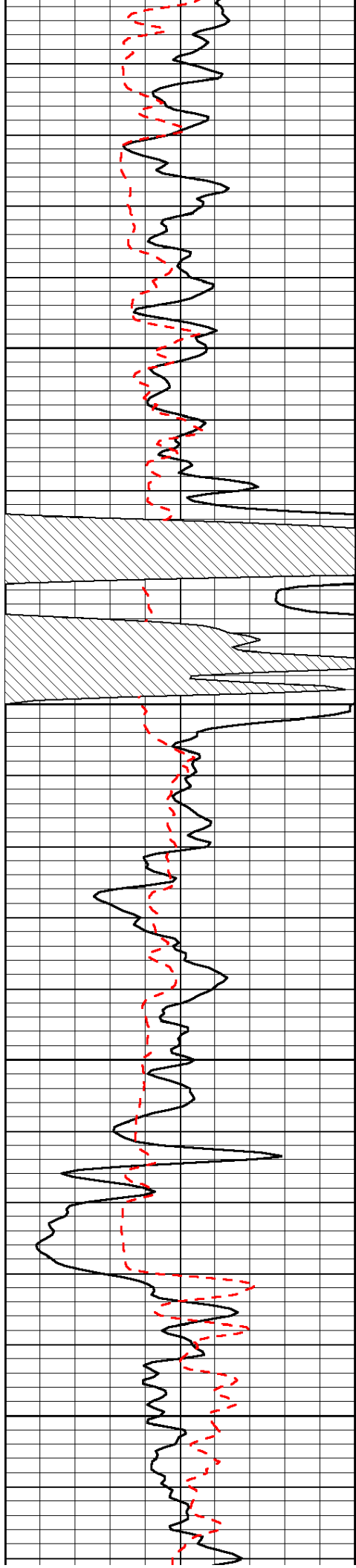


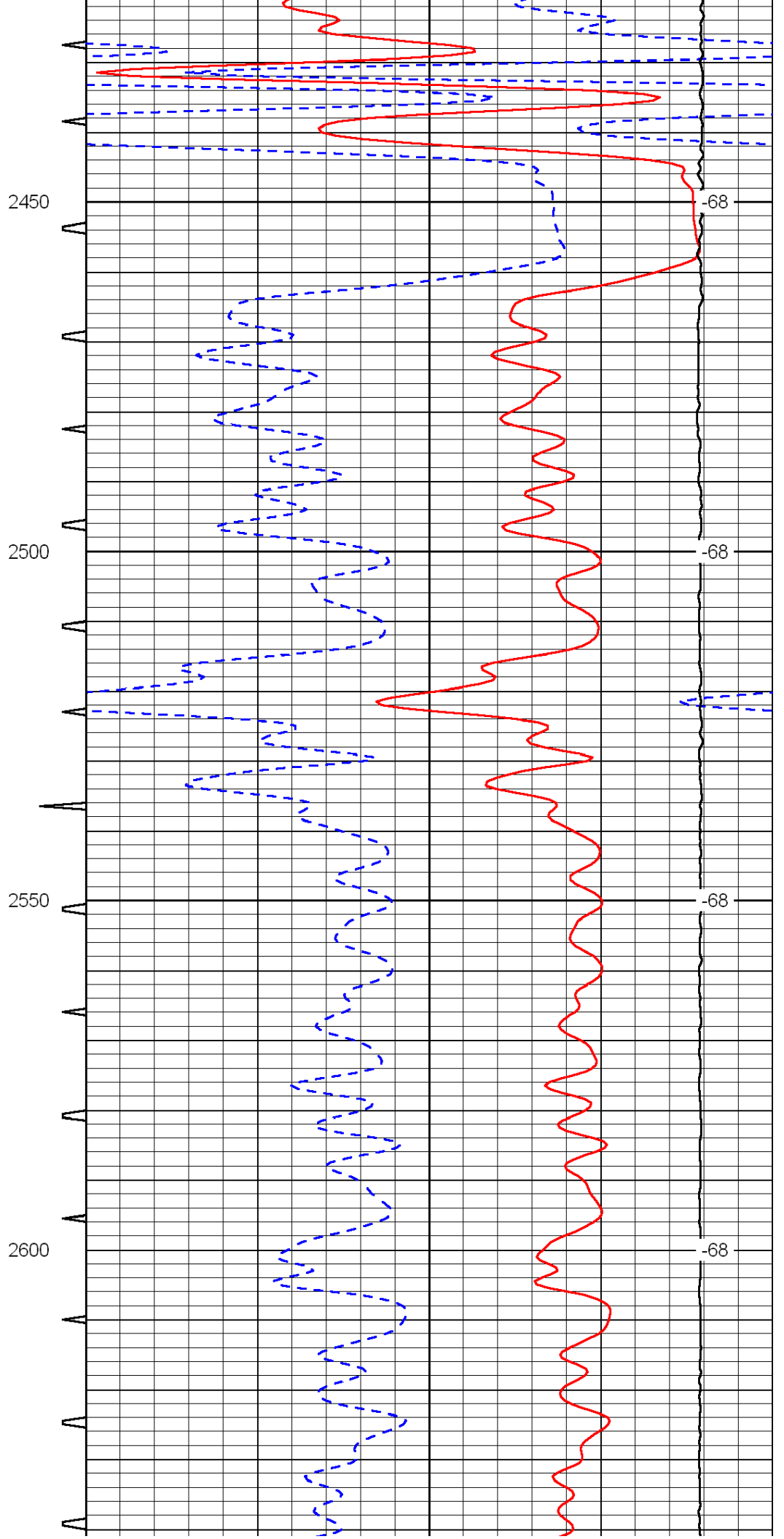
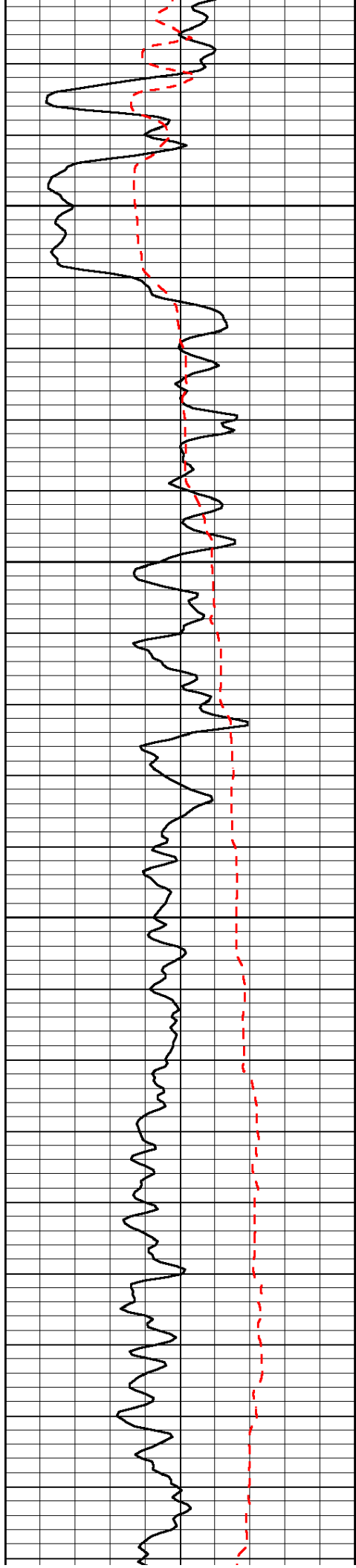


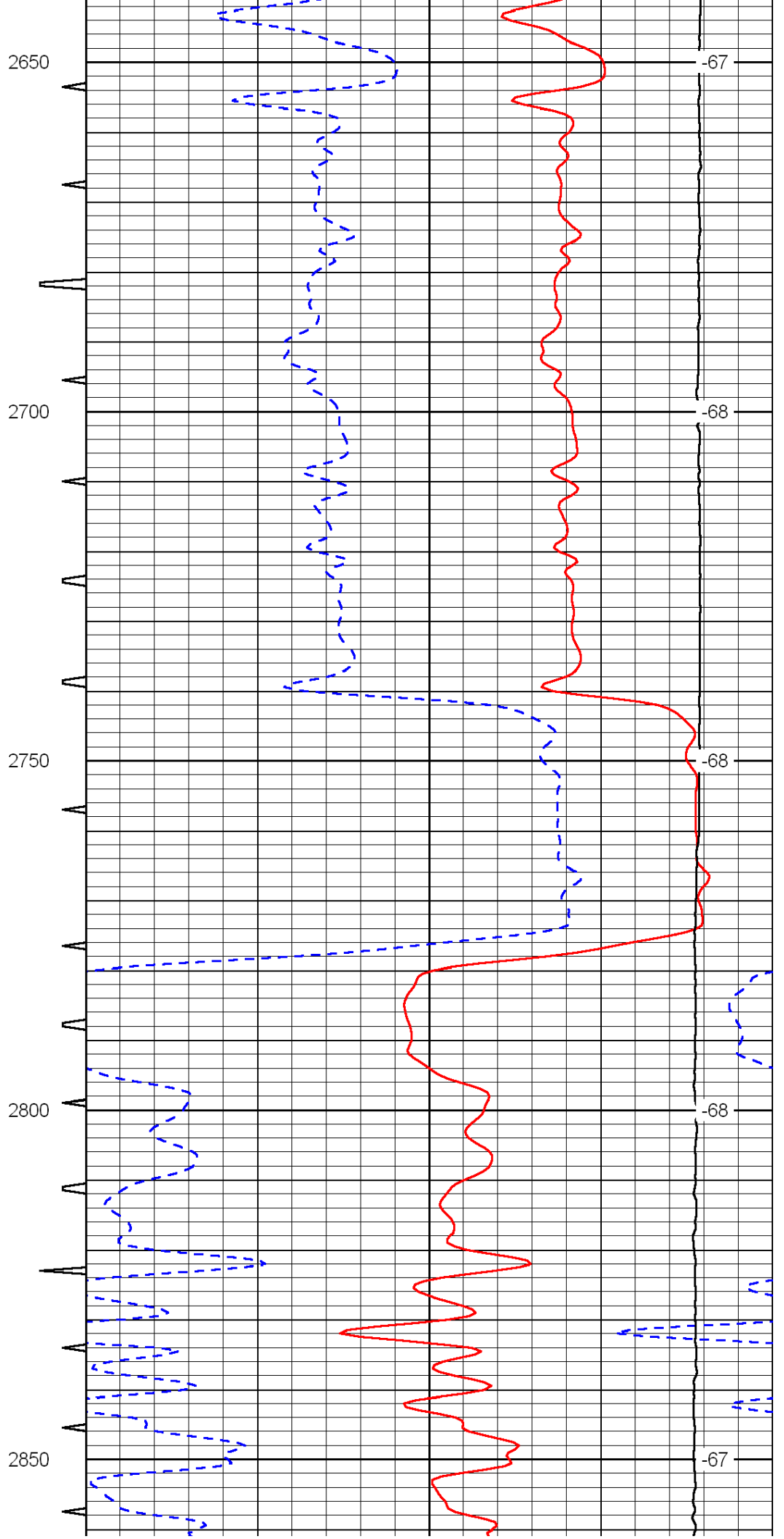
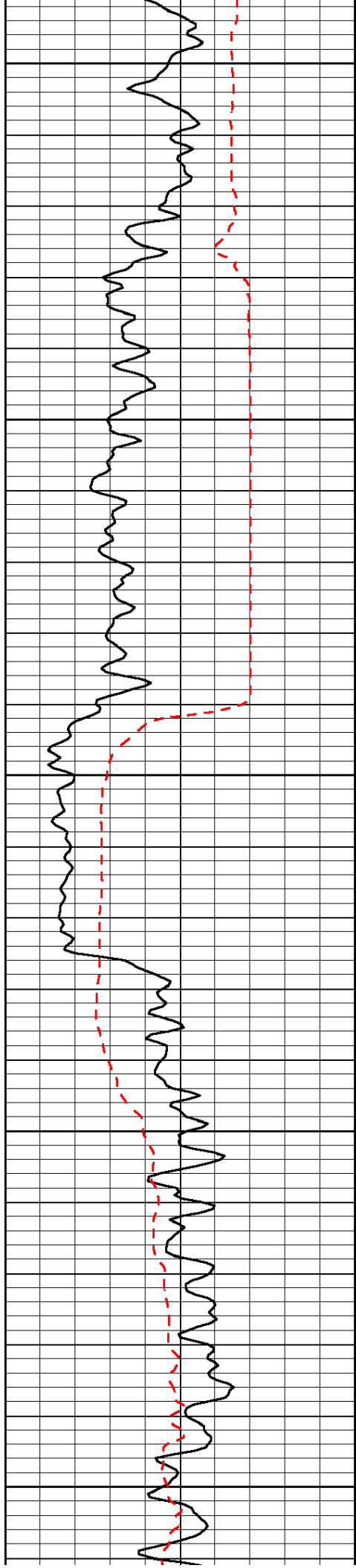


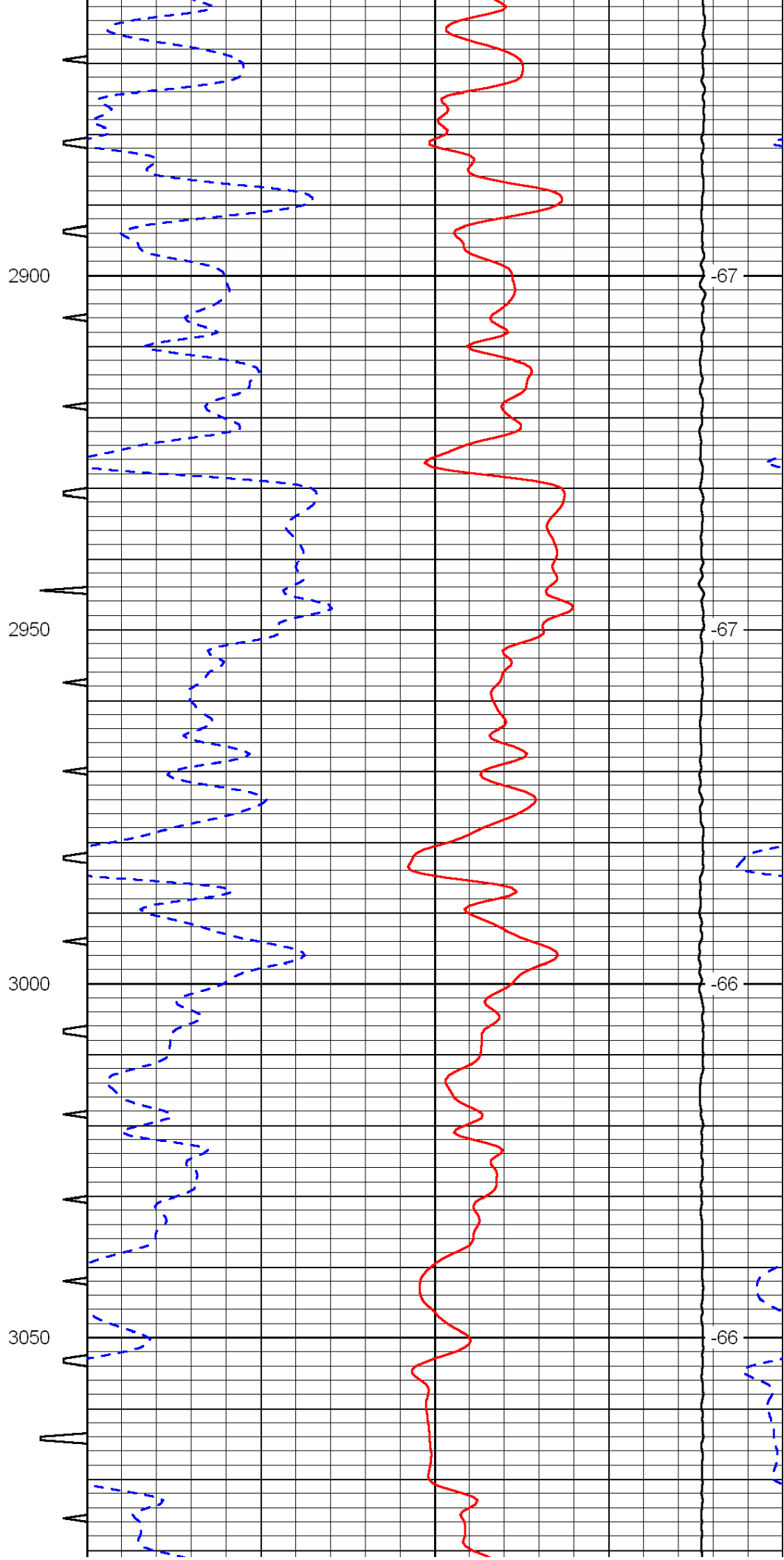
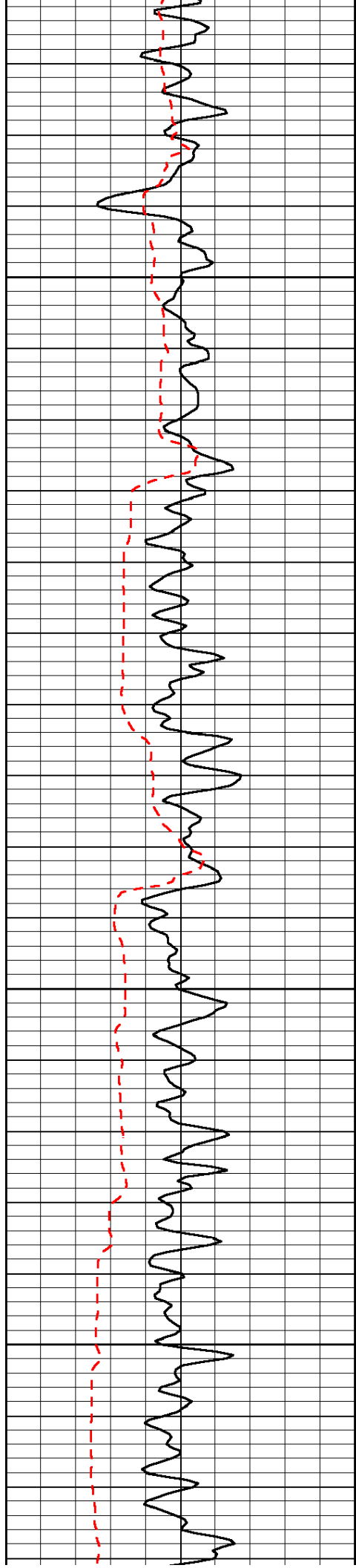


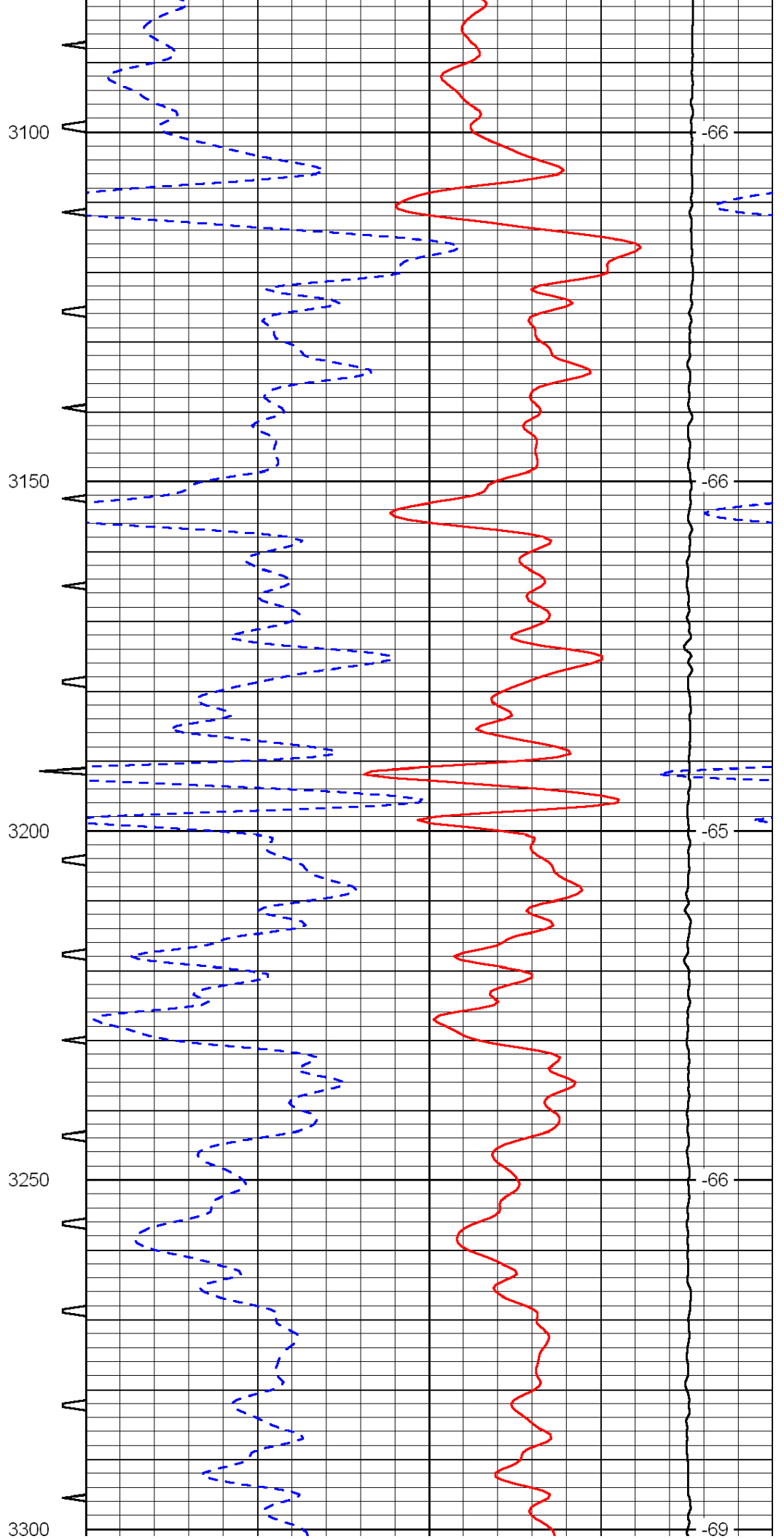
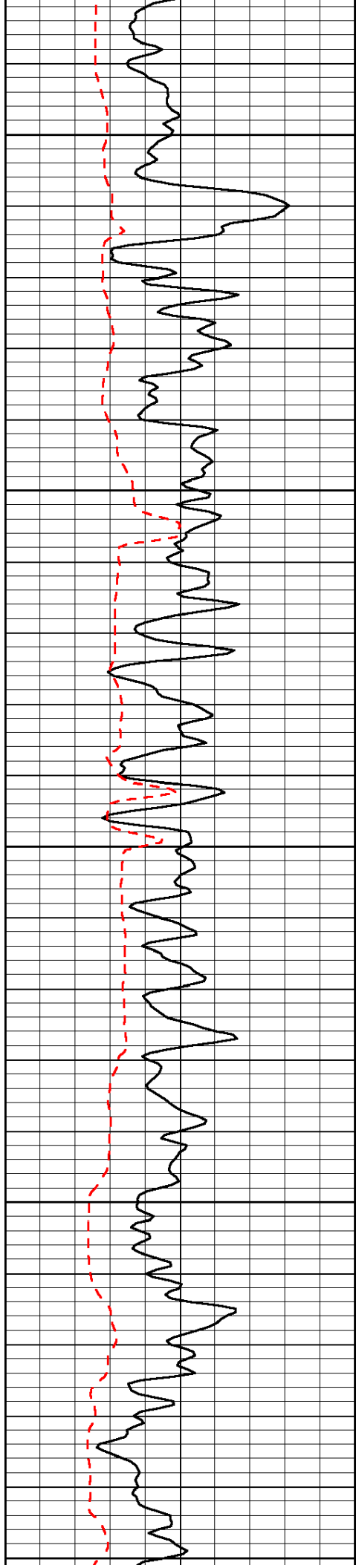


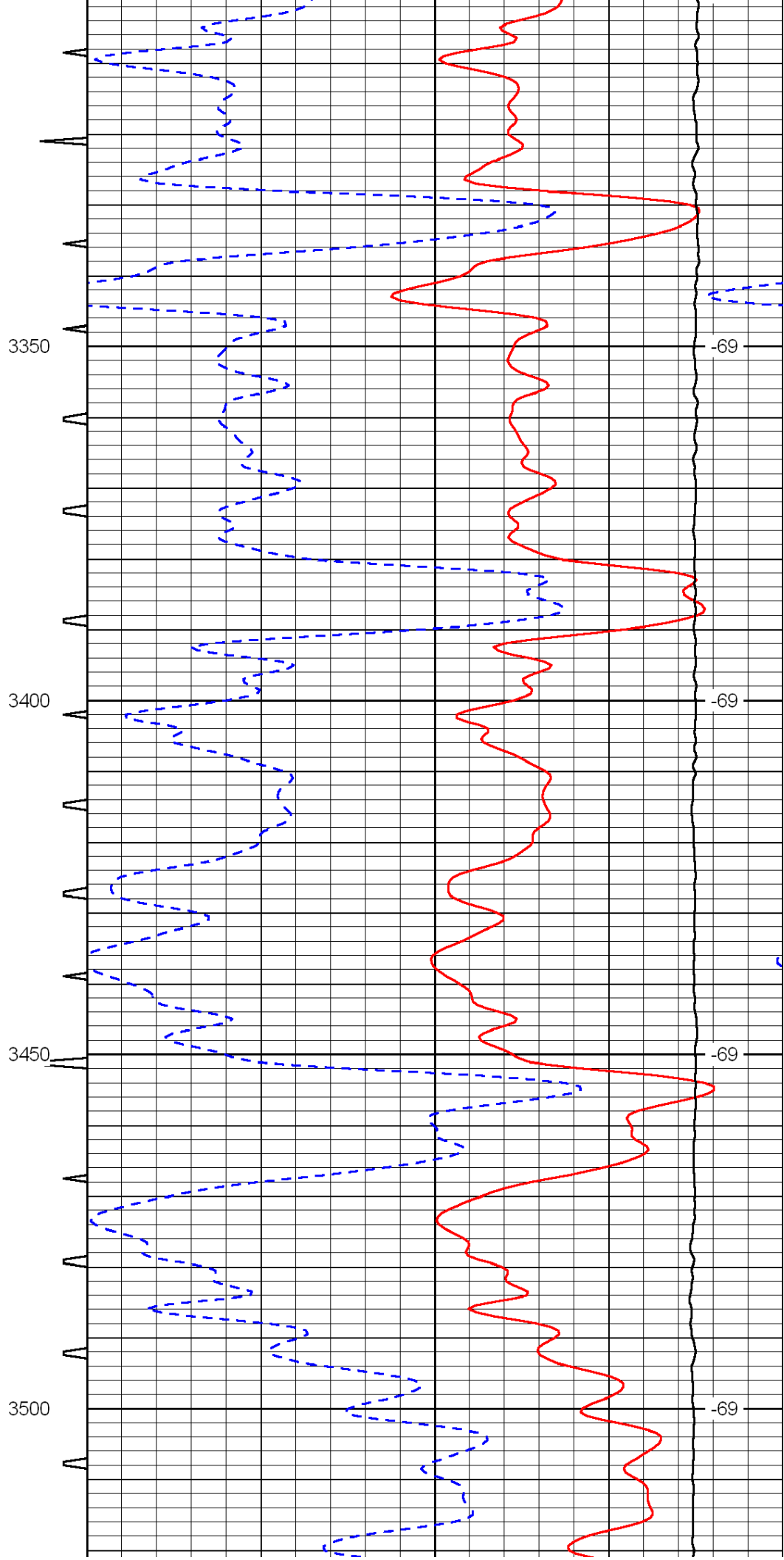
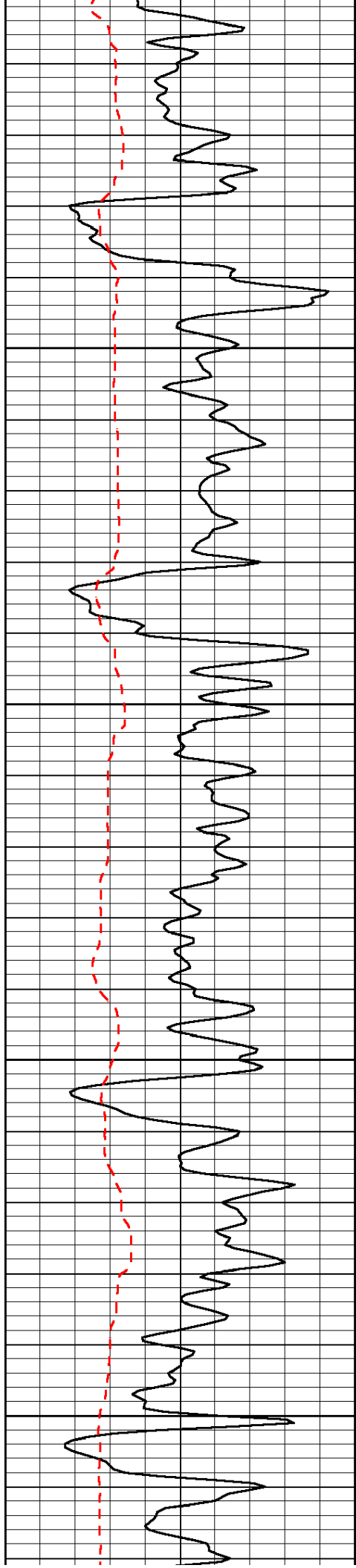


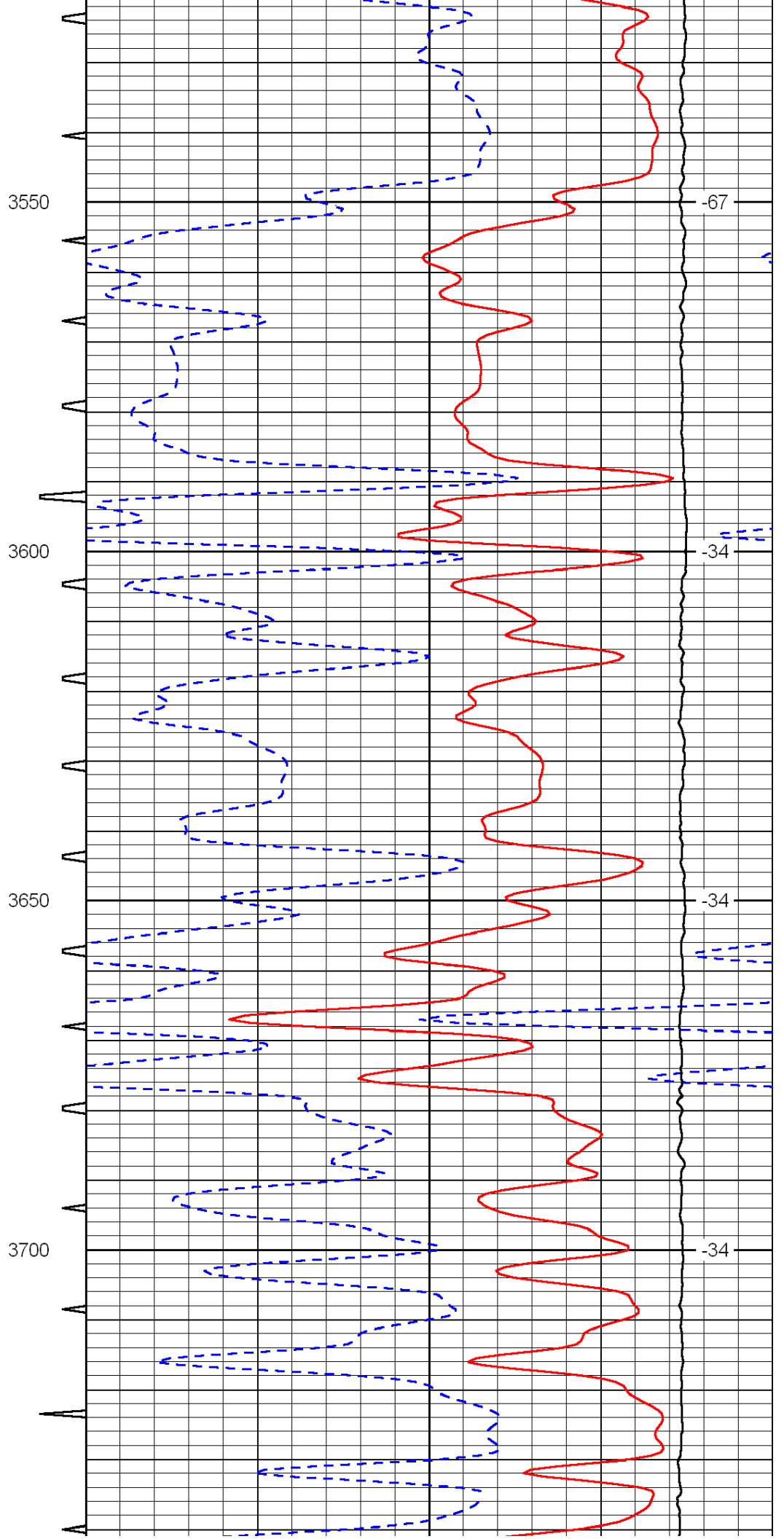
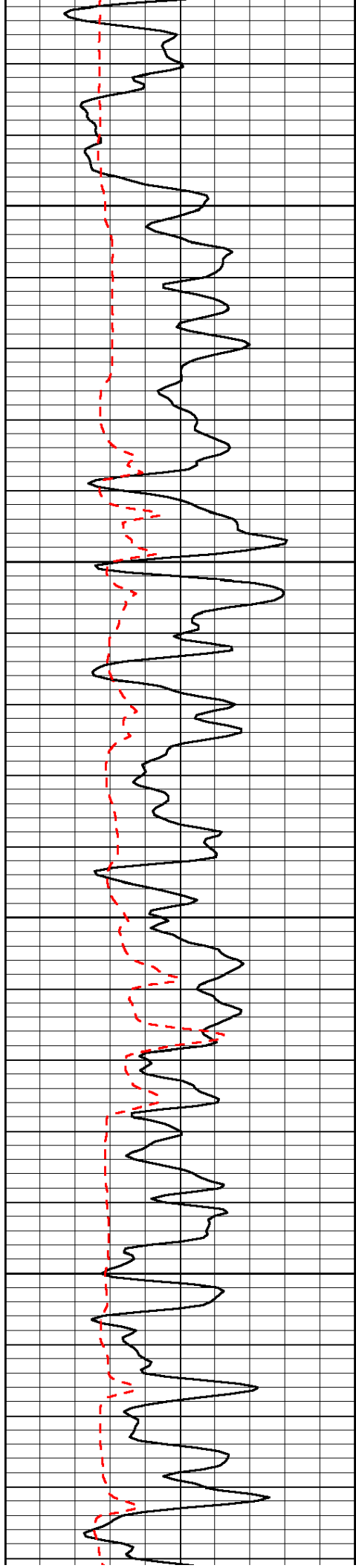


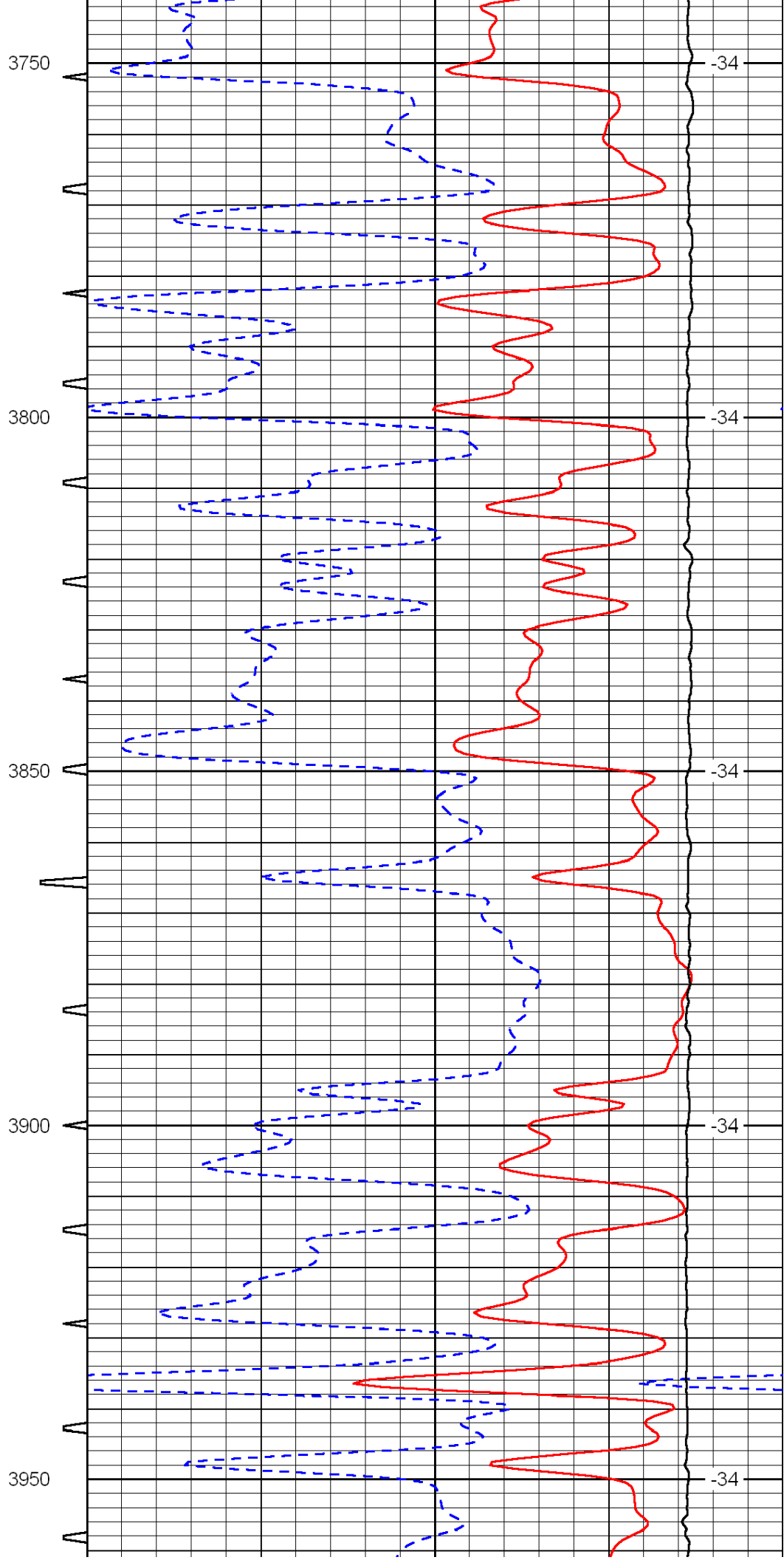
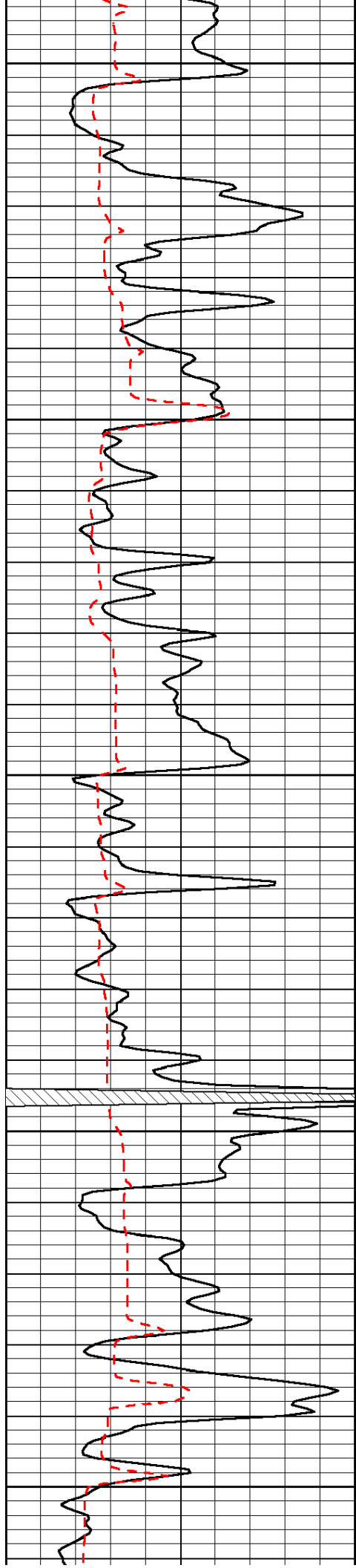


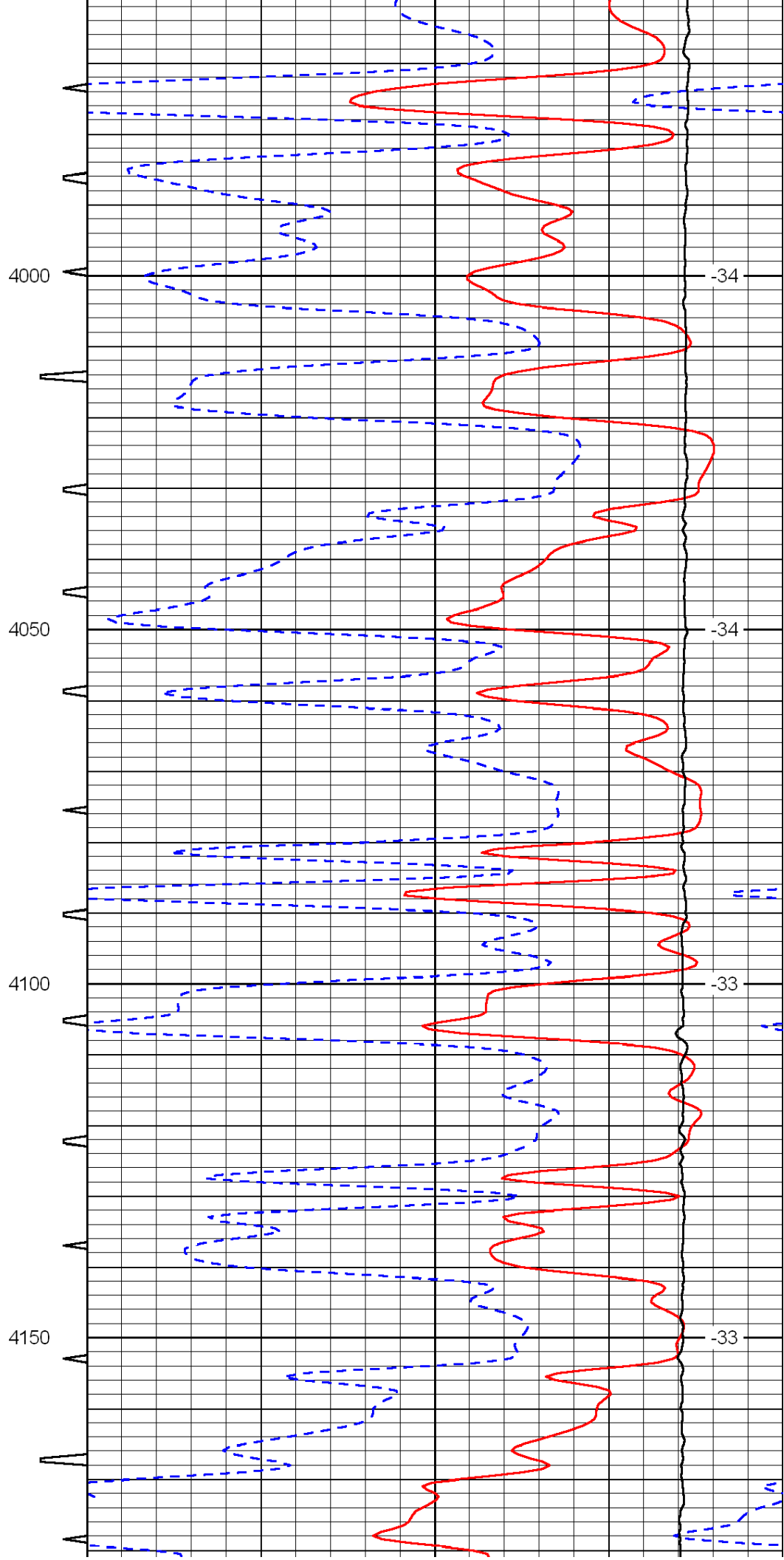
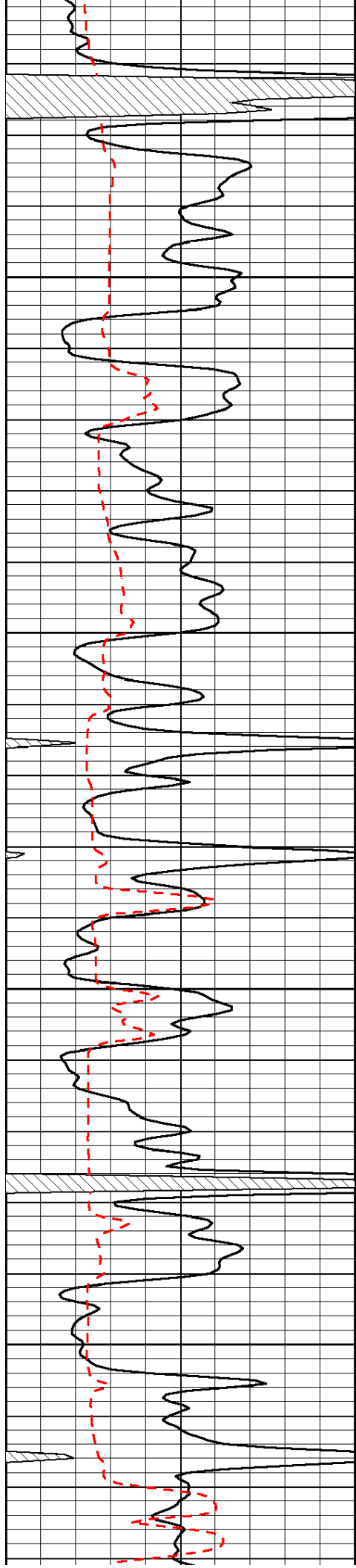


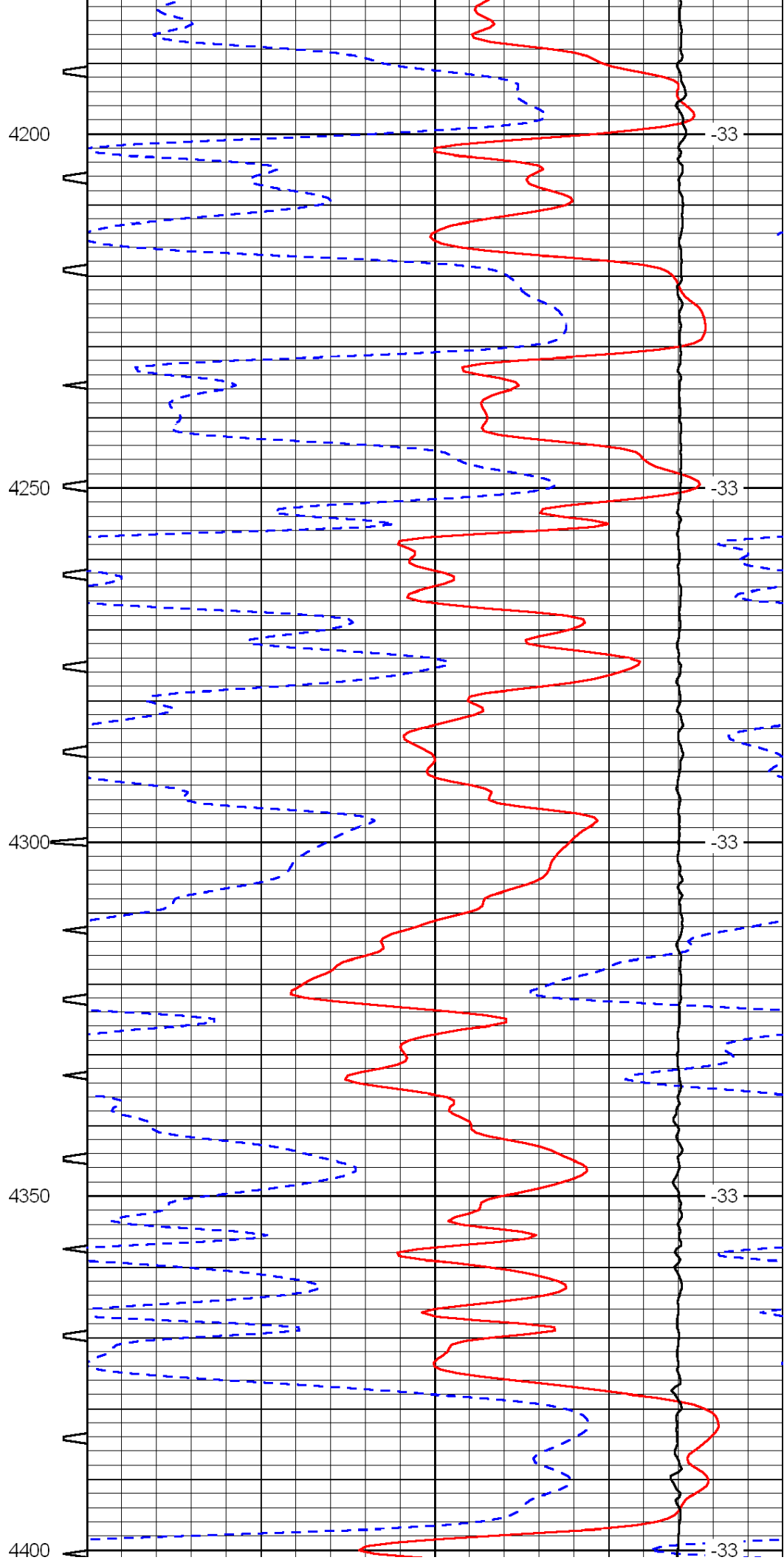
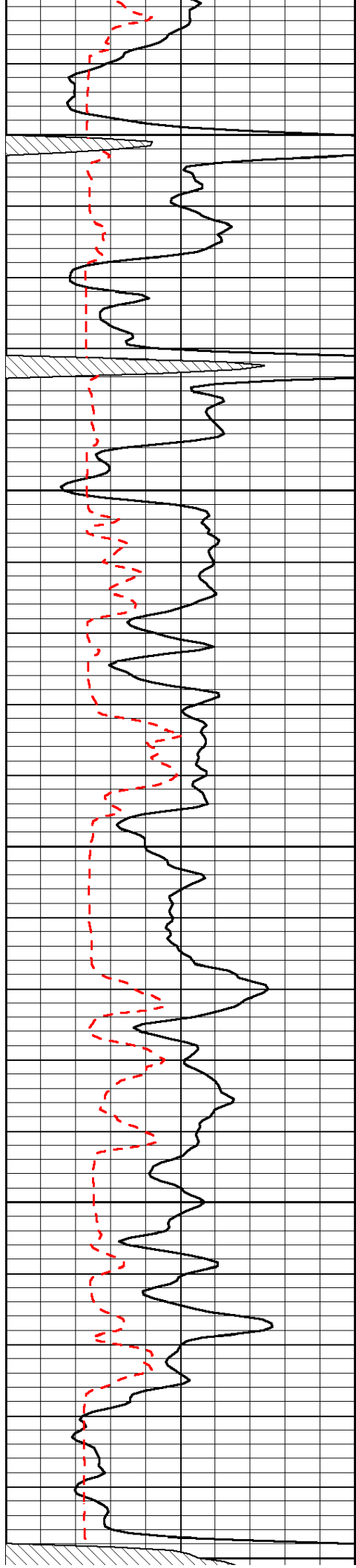


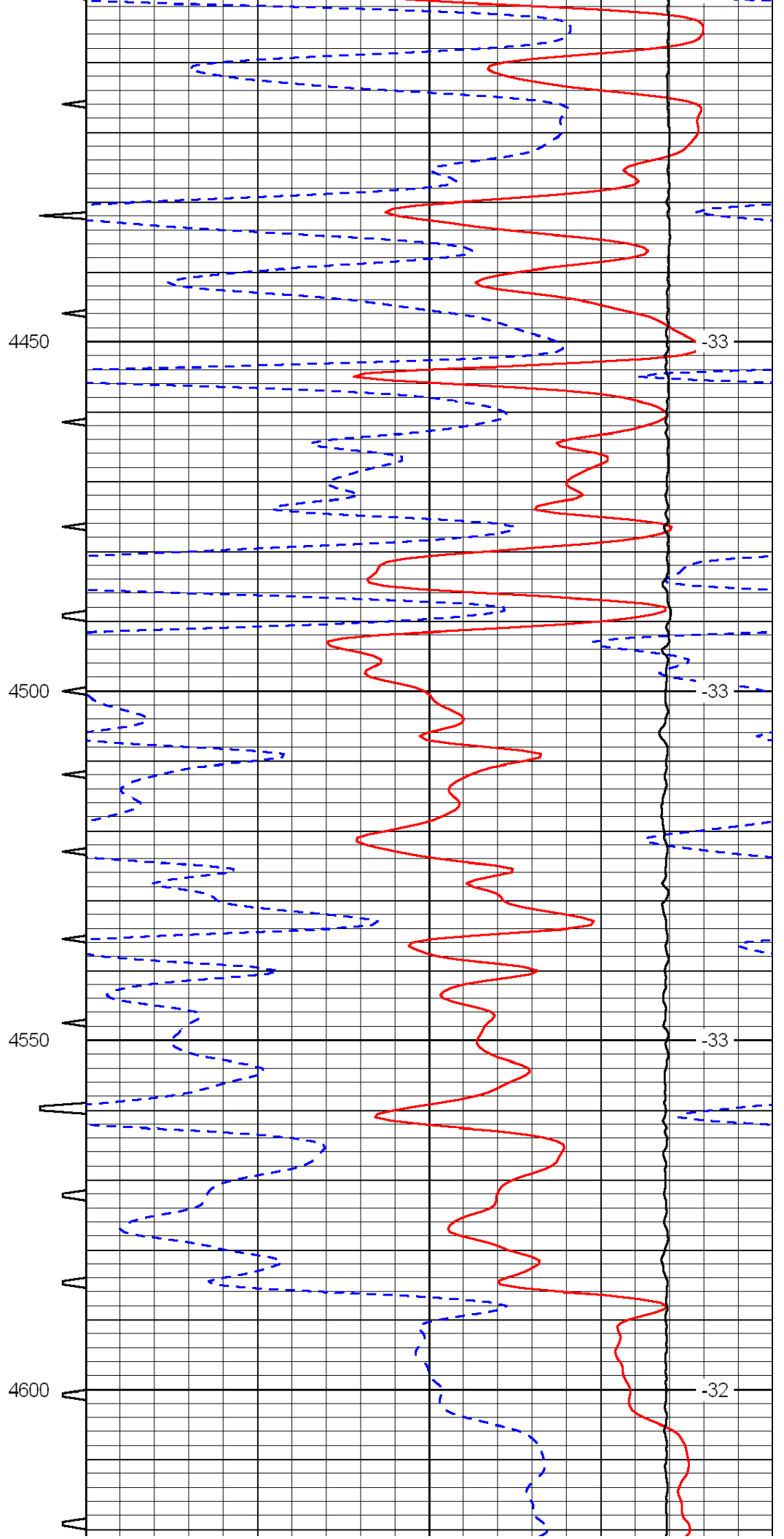
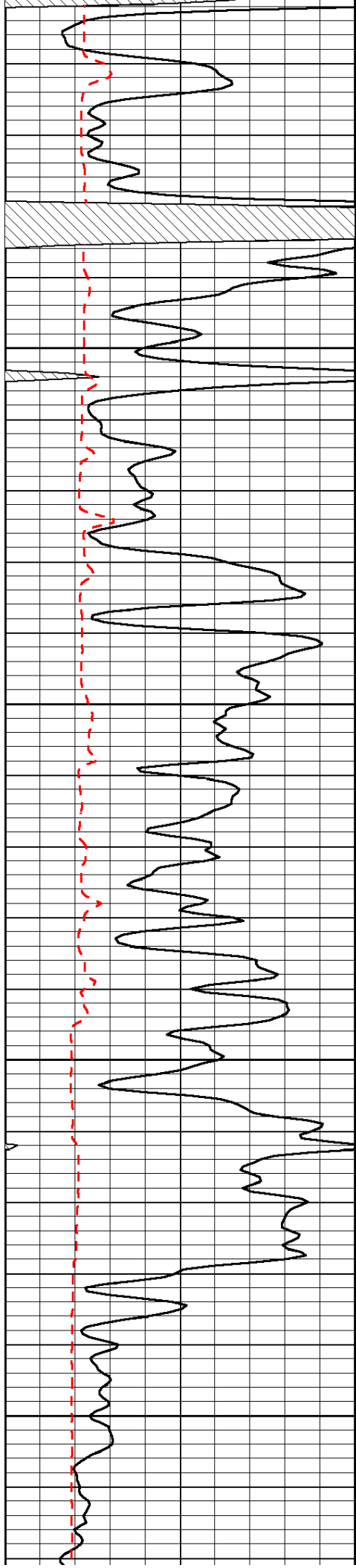


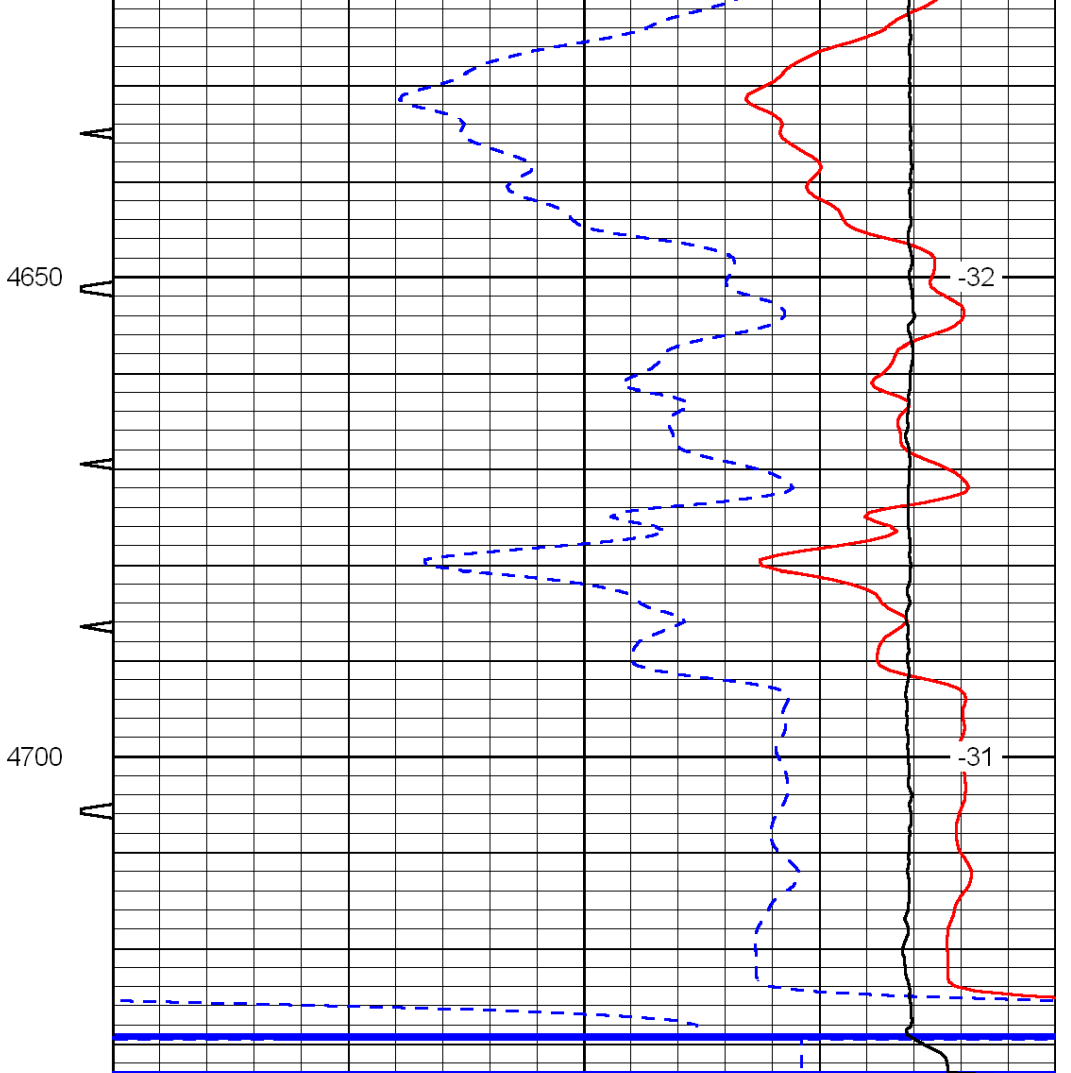
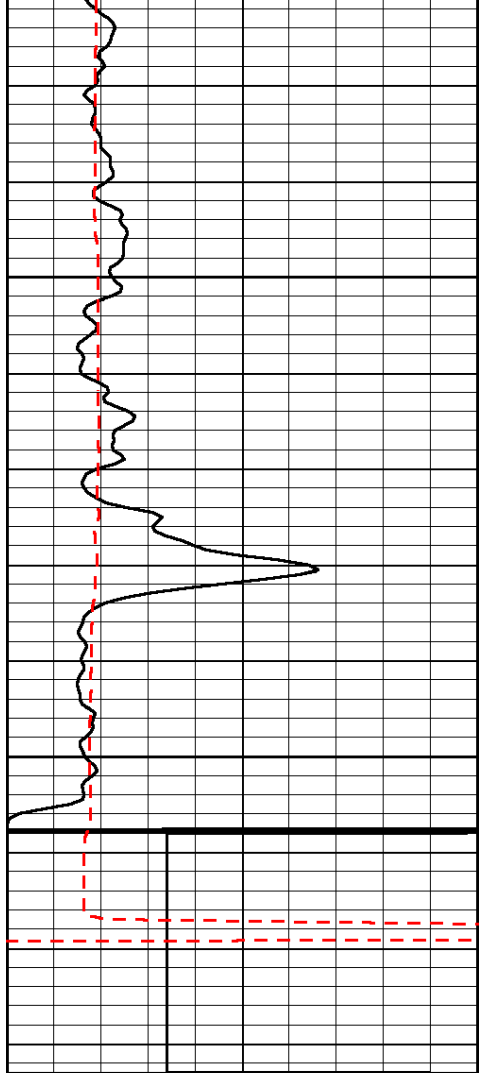












0	Gamma Ray	150	Sonic Int	140	Delta Time (usec/ft)	40
150	Gamma Ray	300	5	0	SPOR	-10
6	Caliper (GAPI)	16		15000	LTEN (lb)	0
LSPD						