



Dual Induction Log

DIGITAL LOG

(785) 625-3858

API No.

15-109-21076-00-00

Company **Landmark Resources, Inc.**

Well **Gerber #1-16**

Field **Wildcat**

County **Logan**

State

Kansas

Location

**NE SW SW NE
2139'FNL / 2303' FEL**

Other Services
CNL / CDL
MEL / BHCS

Sec: **16**

Twp: **15S**

Rge: **33W**

Elevation

K.B. 2930
D.F. 2919
G.L. 2919

Permanent Datum **Ground Level**

Kelly Bushing

Elevation **2919**

Log Measured From **Kelly Bushing**

11 Ft. Above Perm. Datum

Drilling Measured From **Kelly Bushing**

Date

2/28/2012

Run Number

One

Depth Driller

4665

Depth Logger

4666

Bottom Logged Interval

4665

Top Log Interval

200

Casing Driller

8.625 @ 216

Casing Logger

213

Bit Size

7.875

Type Fluid in Hole

Chemical

Salinity, ppm CL

5800

Density / Viscosity

9.1

pH / Fluid Loss

11.0

Source of Sample

Flowline

Rm @ Meas. Temp

1.20 @ 65

Rmf @ Meas. Temp

0.90 @ 65

Rmc @ Meas. Temp

1.62 @ 65

Source of Rmf / Rmc

Charts

Rm @ BHT

0.64 @ 123

Operating Rig Time

5 Hours

Max Rec. Temp. F

123

Equipment Number

15

Location

Hays

Recorded By

R. Barnhart

Witnessed By

Terry McLeod

<<< Fold Here >>>

All interpretations are opinions based on inferences from electrical or other measurements and we cannot and do not guarantee the accuracy or correctness of any interpretation, and we shall not, except in the case of gross or willful negligence on our part, be liable or responsible for any loss, costs, damages, or expenses incurred or sustained by anyone resulting from any interpretation made by any of our officers, agents or employees. These interpretations are also subject to our general terms and conditions set out in our current Price Schedule.

Comments

Thank you for using Log-Tech, Inc.
(785) 625-3858

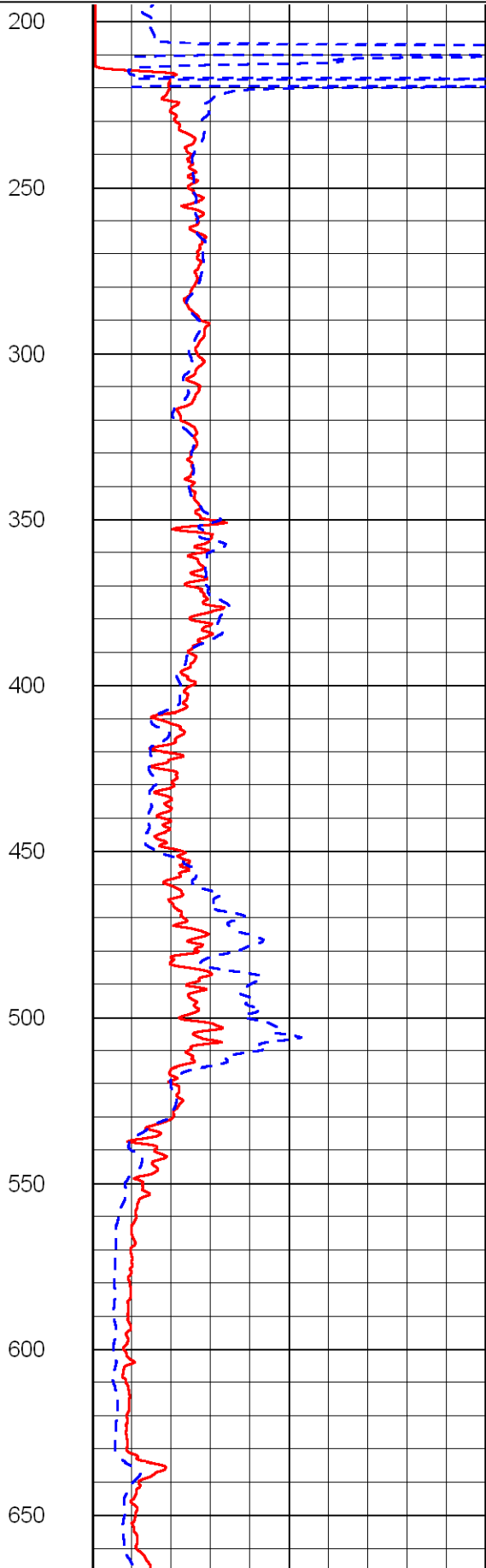
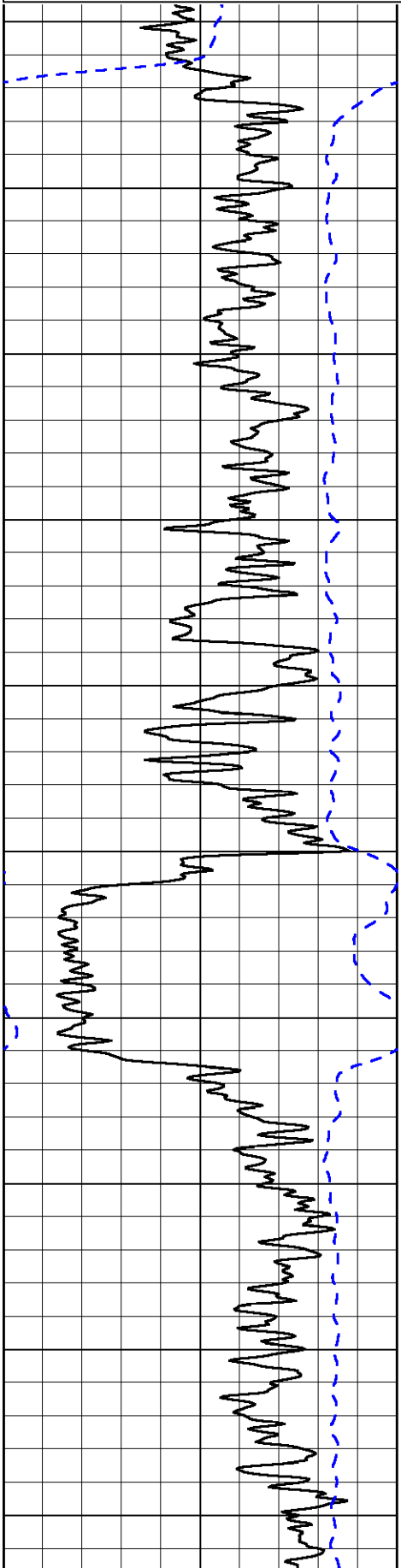
Oakley, KS:
23S, 5W, 2S, 2 1/2W,
S into

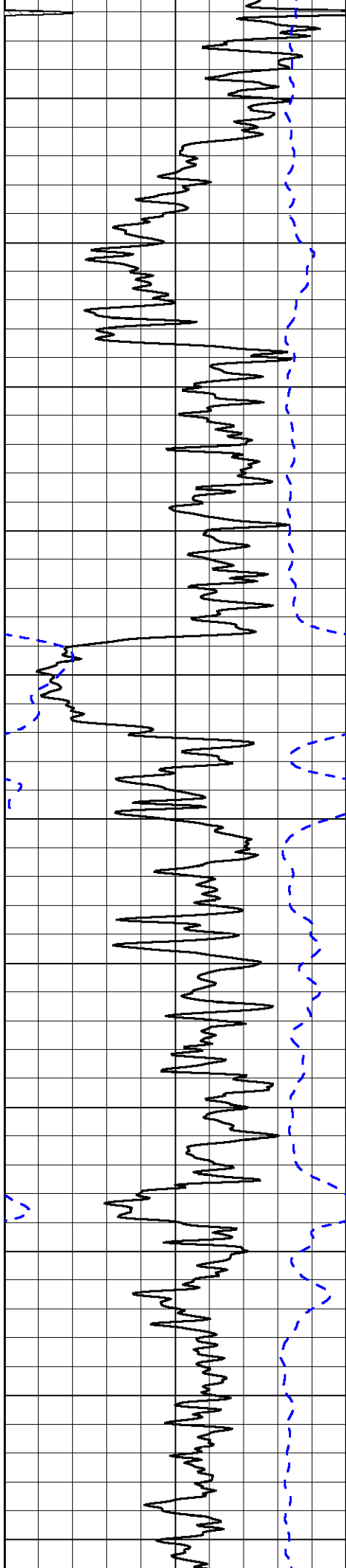
Database File: landmarkhd.db
Dataset Pathname: dil/lndmain
Presentation Format: dil2in
Dataset Creation: Tue Feb 28 14:46:30 2012
Charted by: Depth in Feet scaled 1:600

0 Gamma Ray 150
-200 SP 0

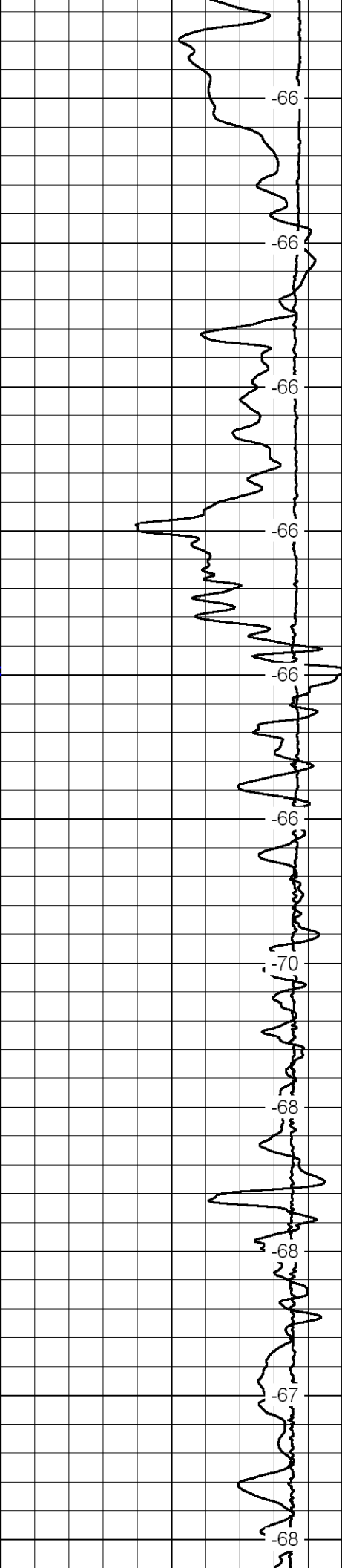
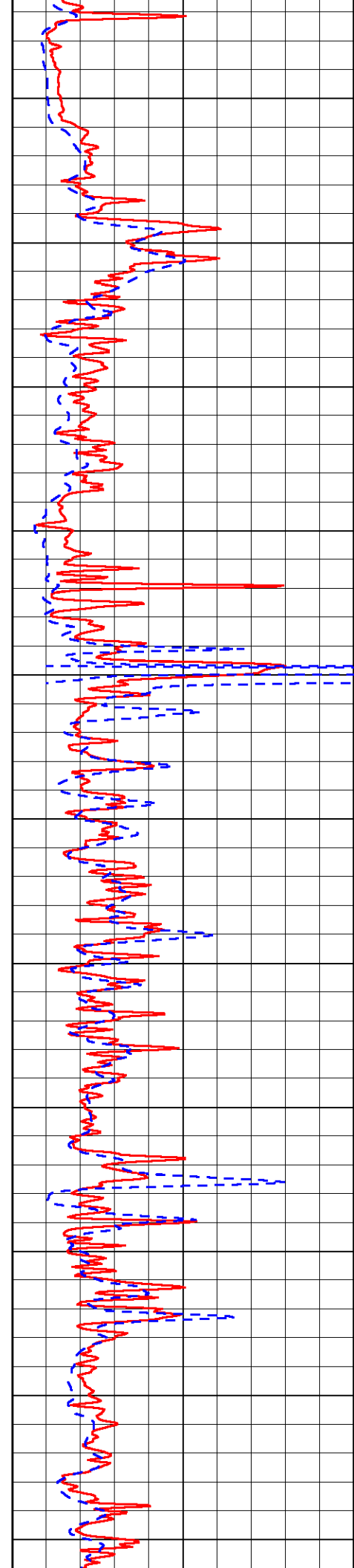
0 Shallow Resistivity 50
0 Deep Resistivity 50
1000 Conductivity 0
15000 Line Tension 0
50 Shallow Resistivity 500
50 Deep Resistivity 500

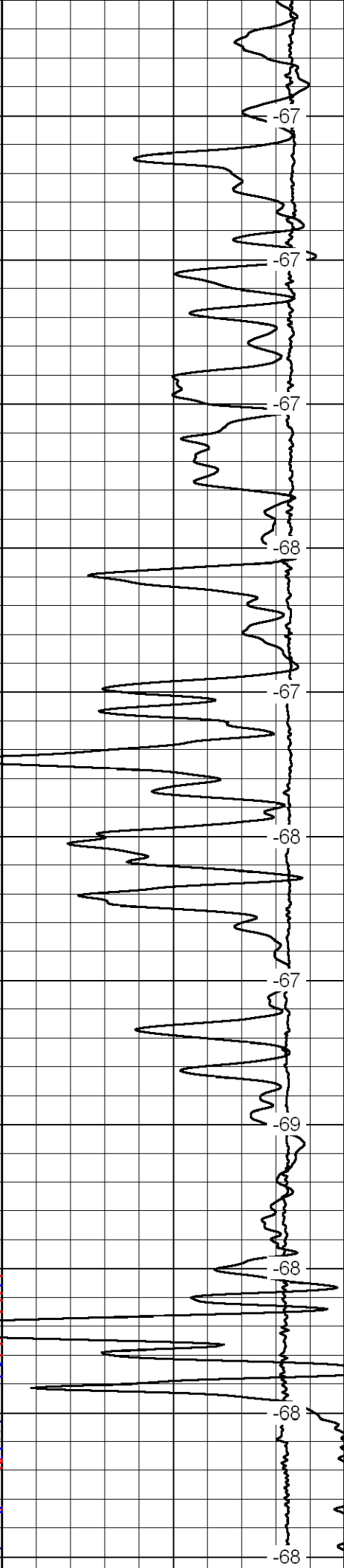
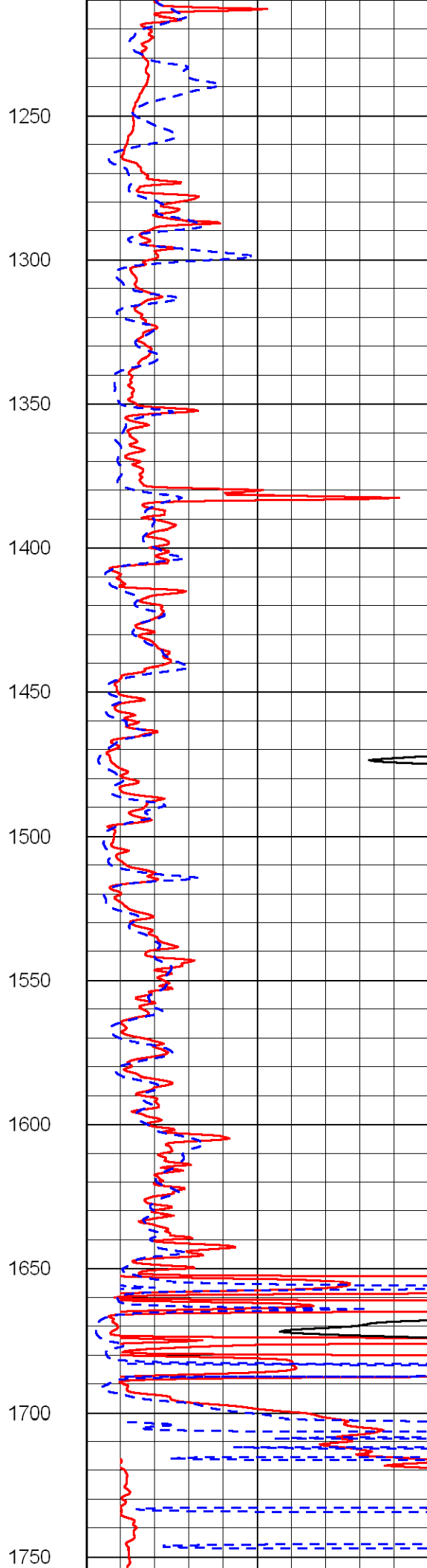
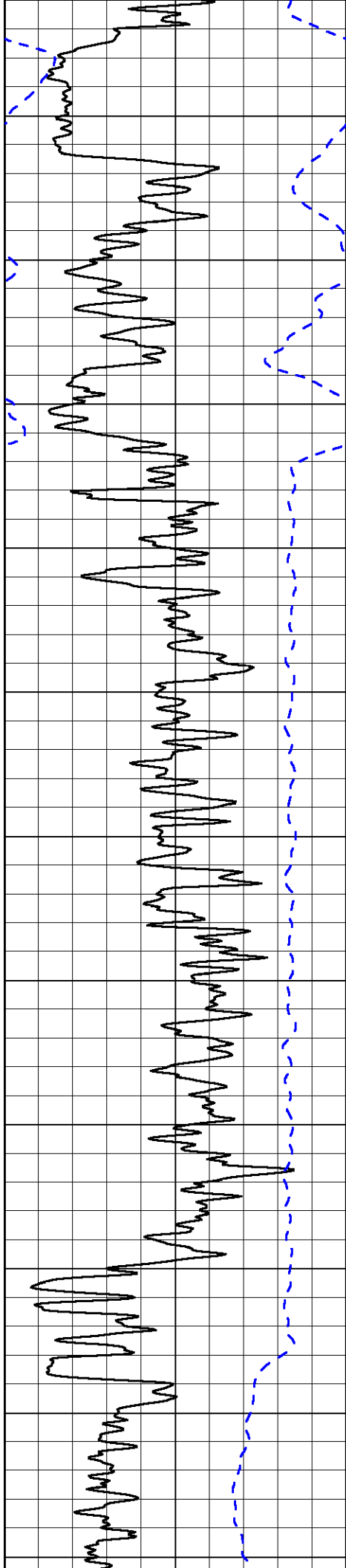
LSPD

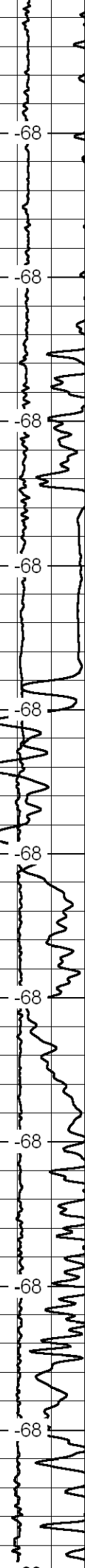
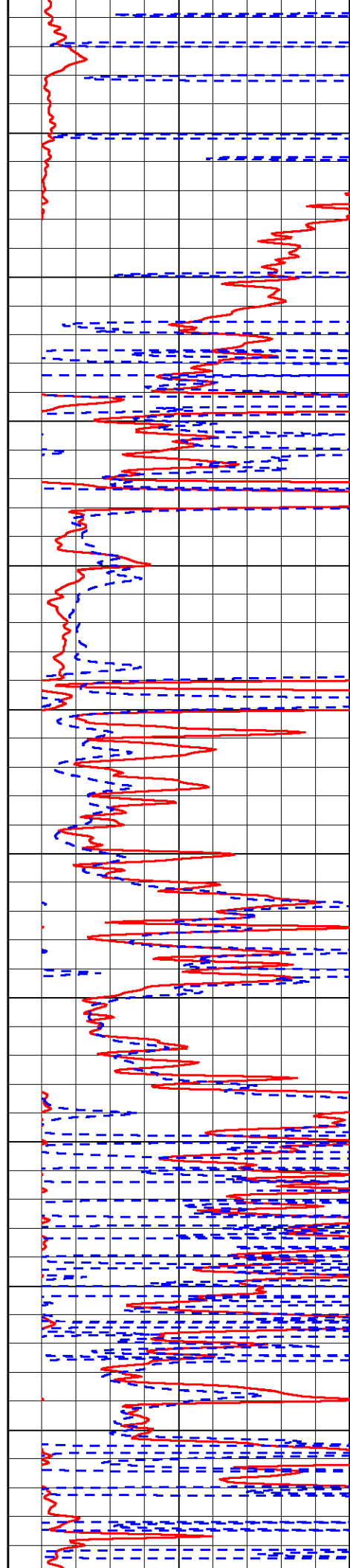
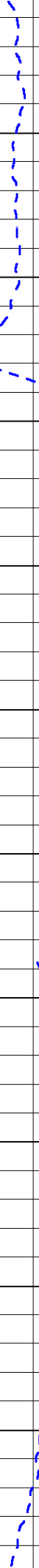
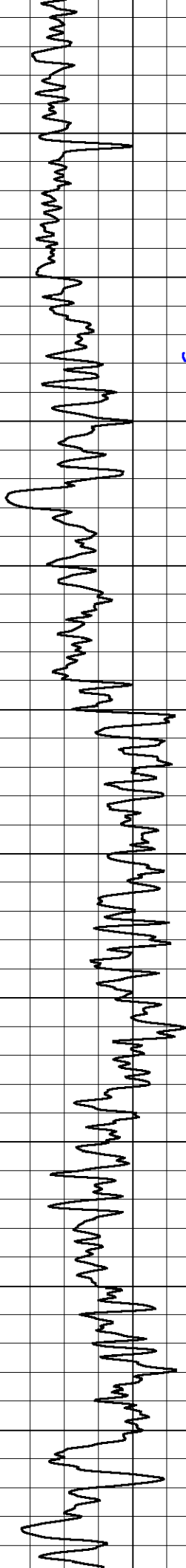


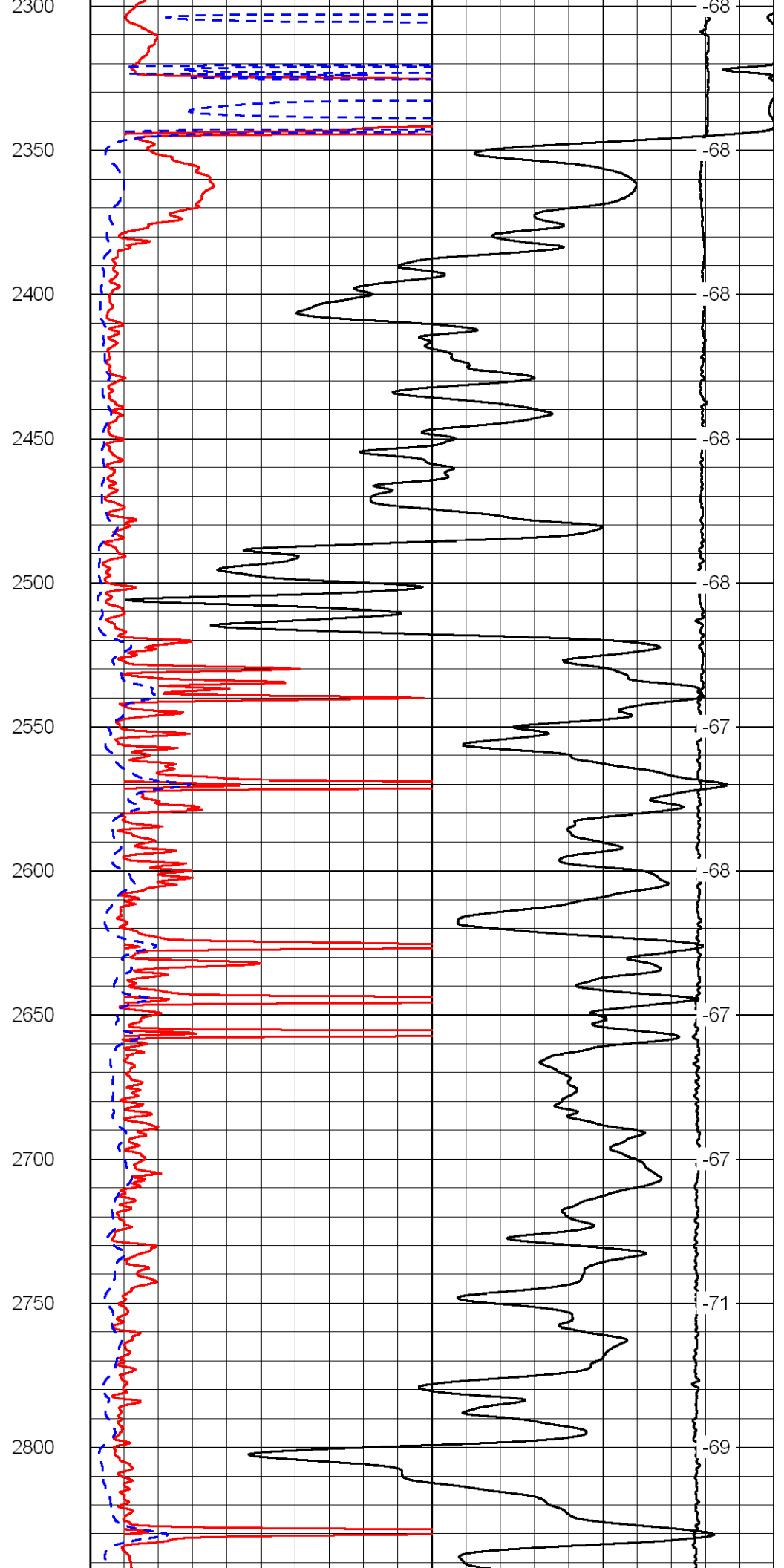
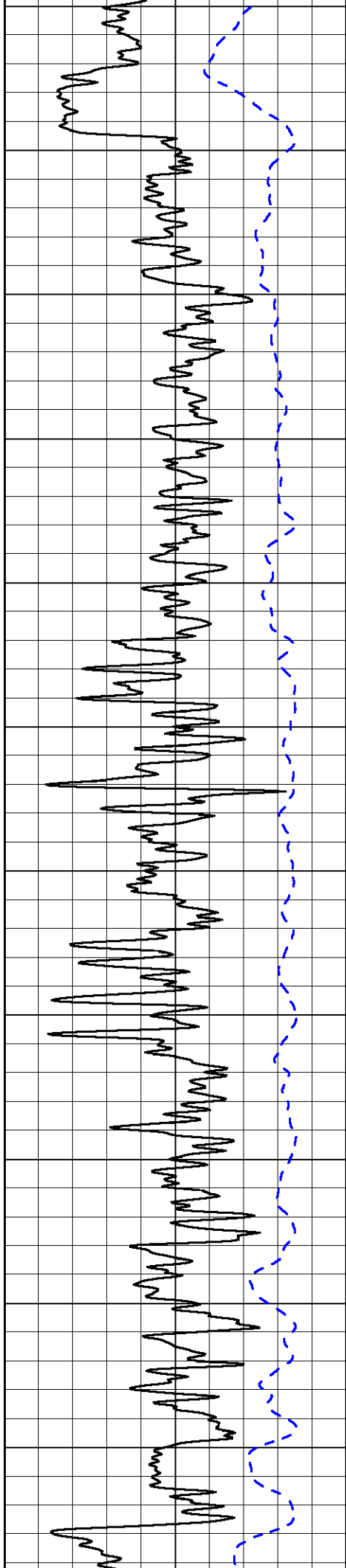


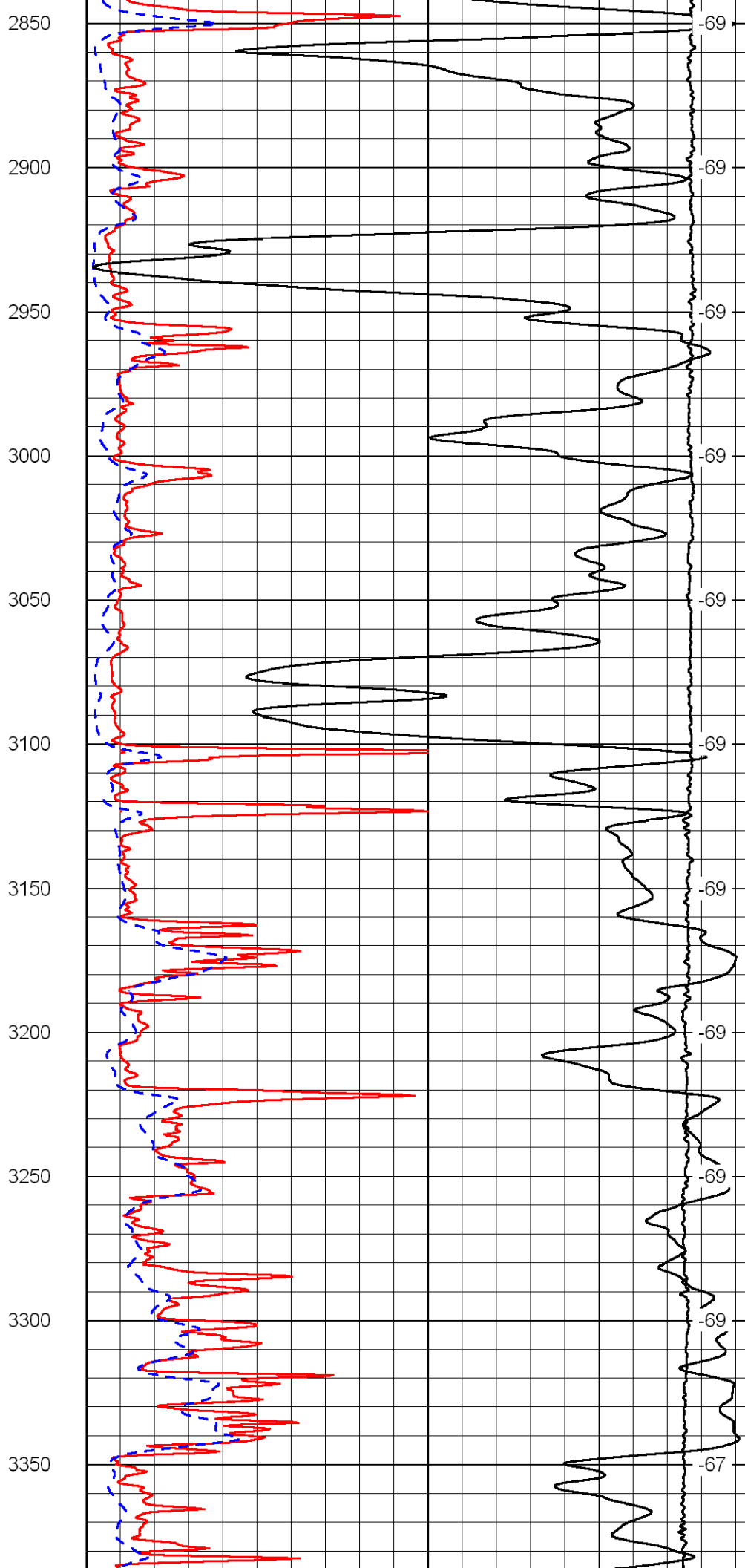
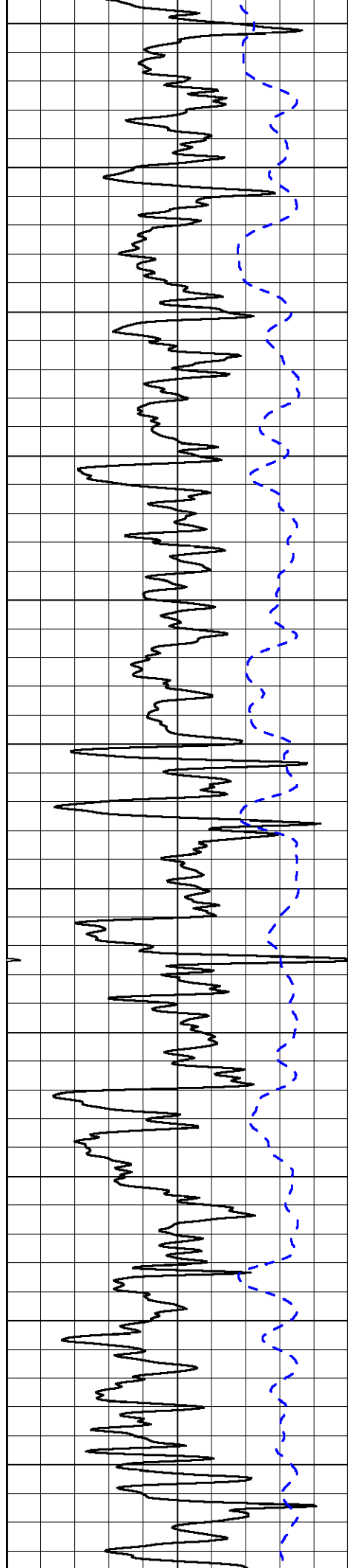
700
750
800
850
900
950
1000
1050
1100
1150
1200

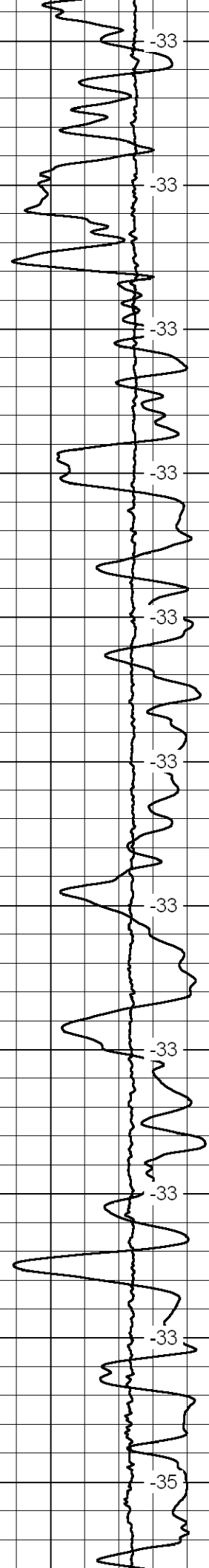
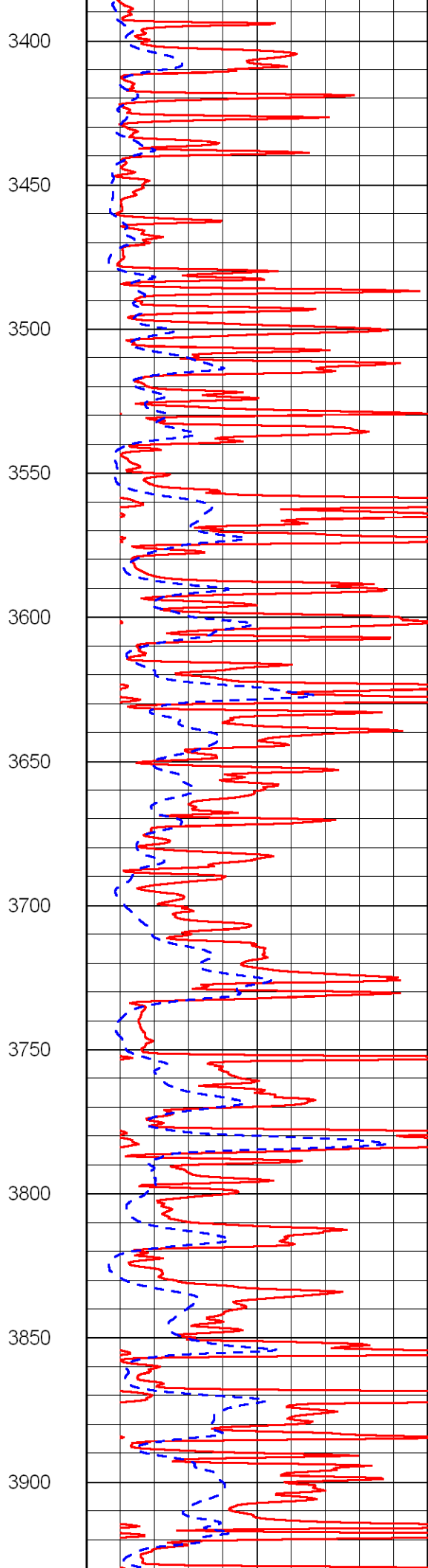
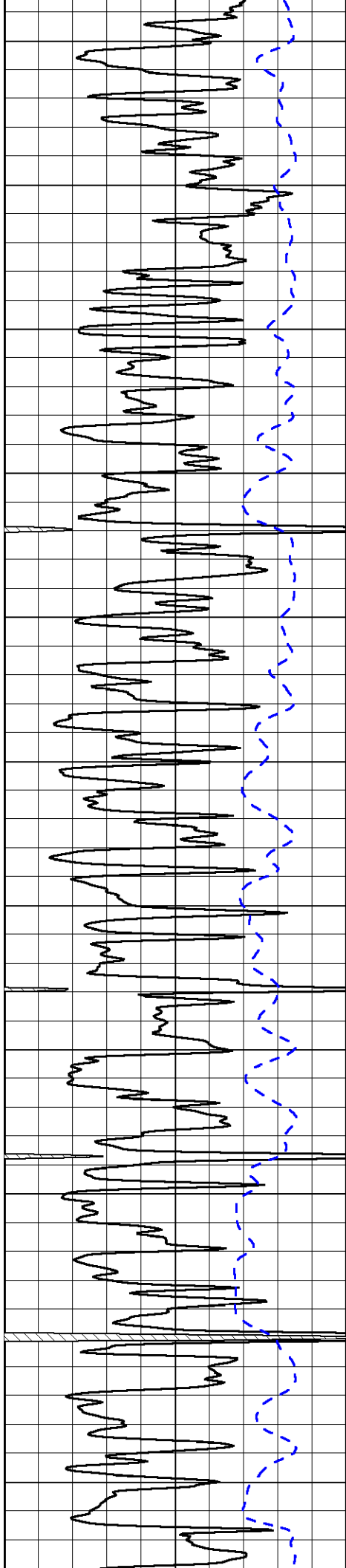


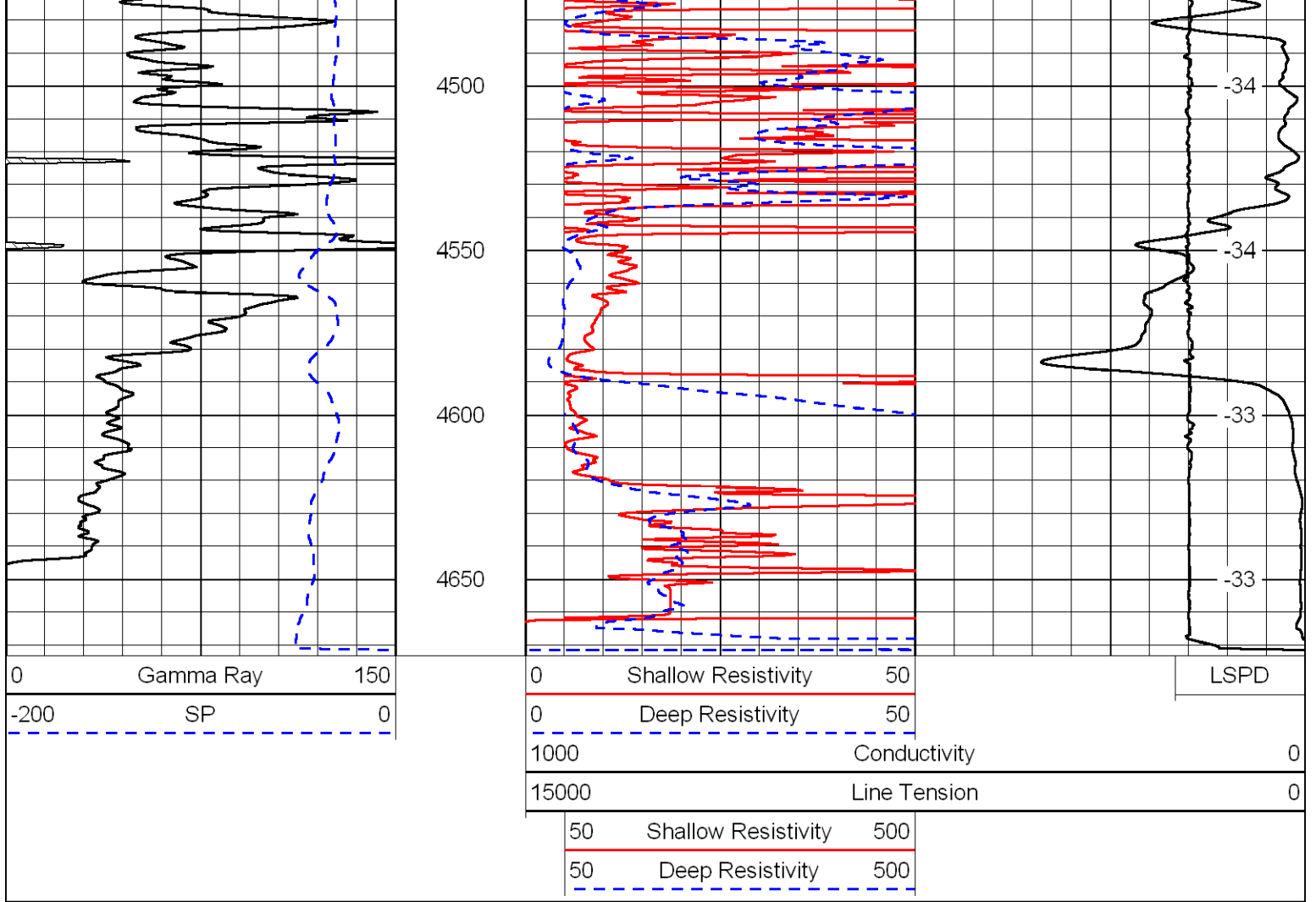




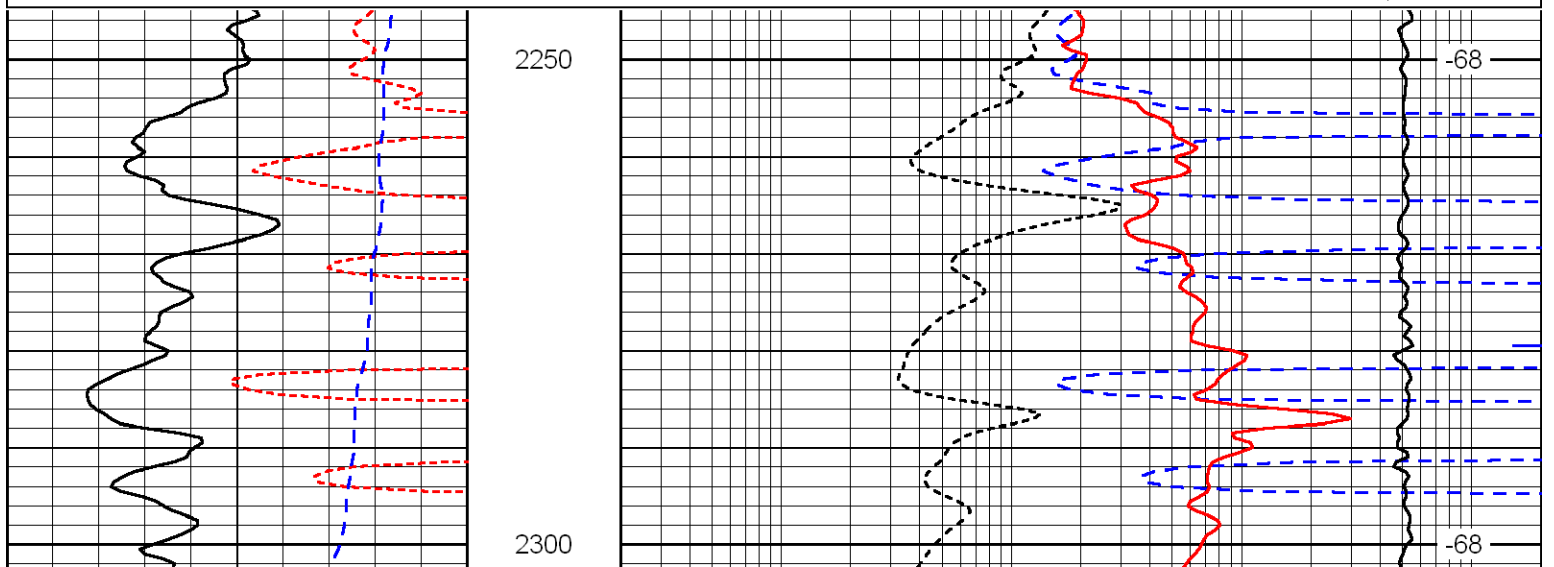
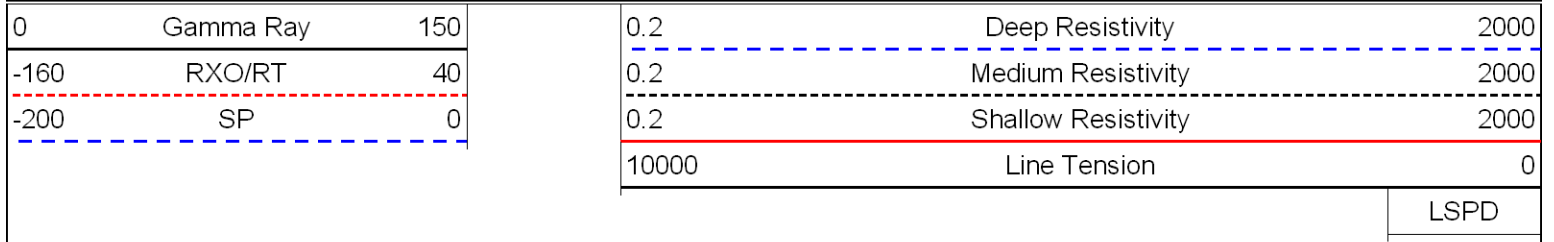


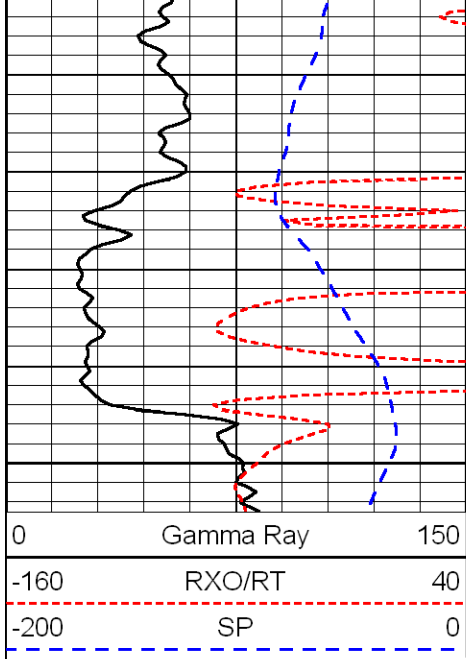




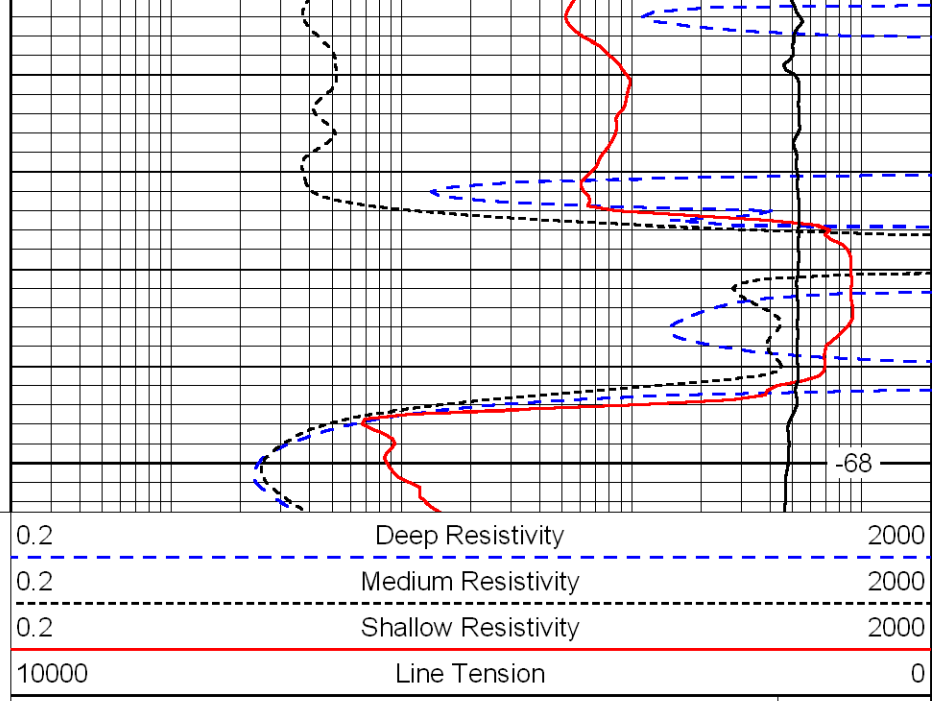


Database File: landmarkhd.db
 Dataset Pathname: dil/Indmain
 Presentation Format: dil
 Dataset Creation: Tue Feb 28 14:46:30 2012
 Charted by: Depth in Feet scaled 1:240





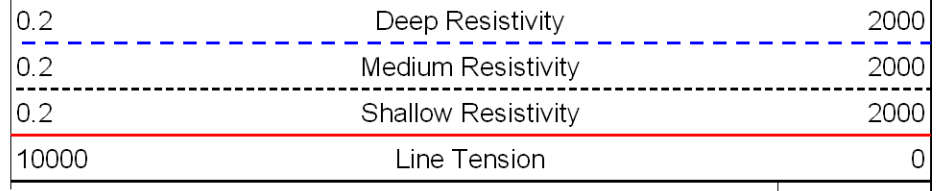
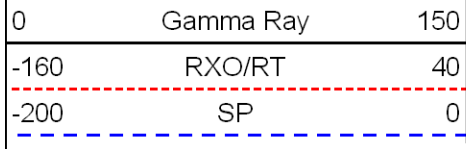
2350



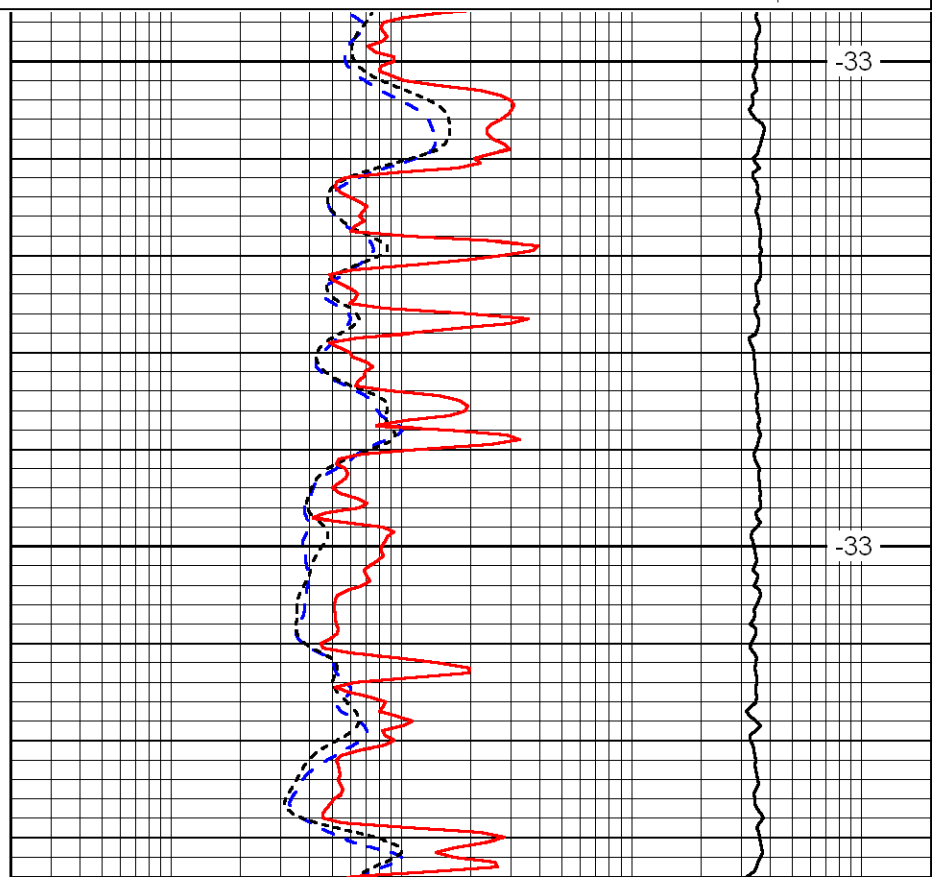
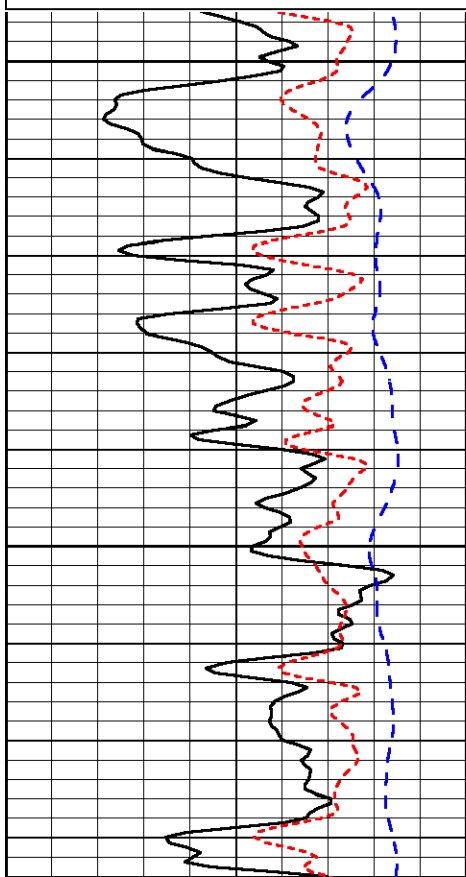
-68

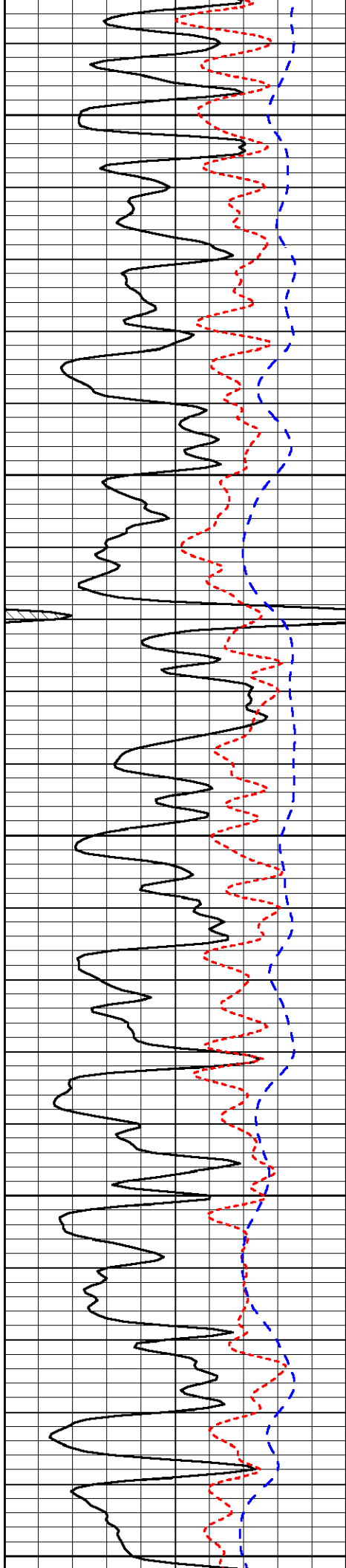
LSPD

Database File: landmarkhd.db
 Dataset Pathname: dil/Indmain
 Presentation Format: dil
 Dataset Creation: Tue Feb 28 14:46:30 2012
 Charted by: Depth in Feet scaled 1:240



LSPD





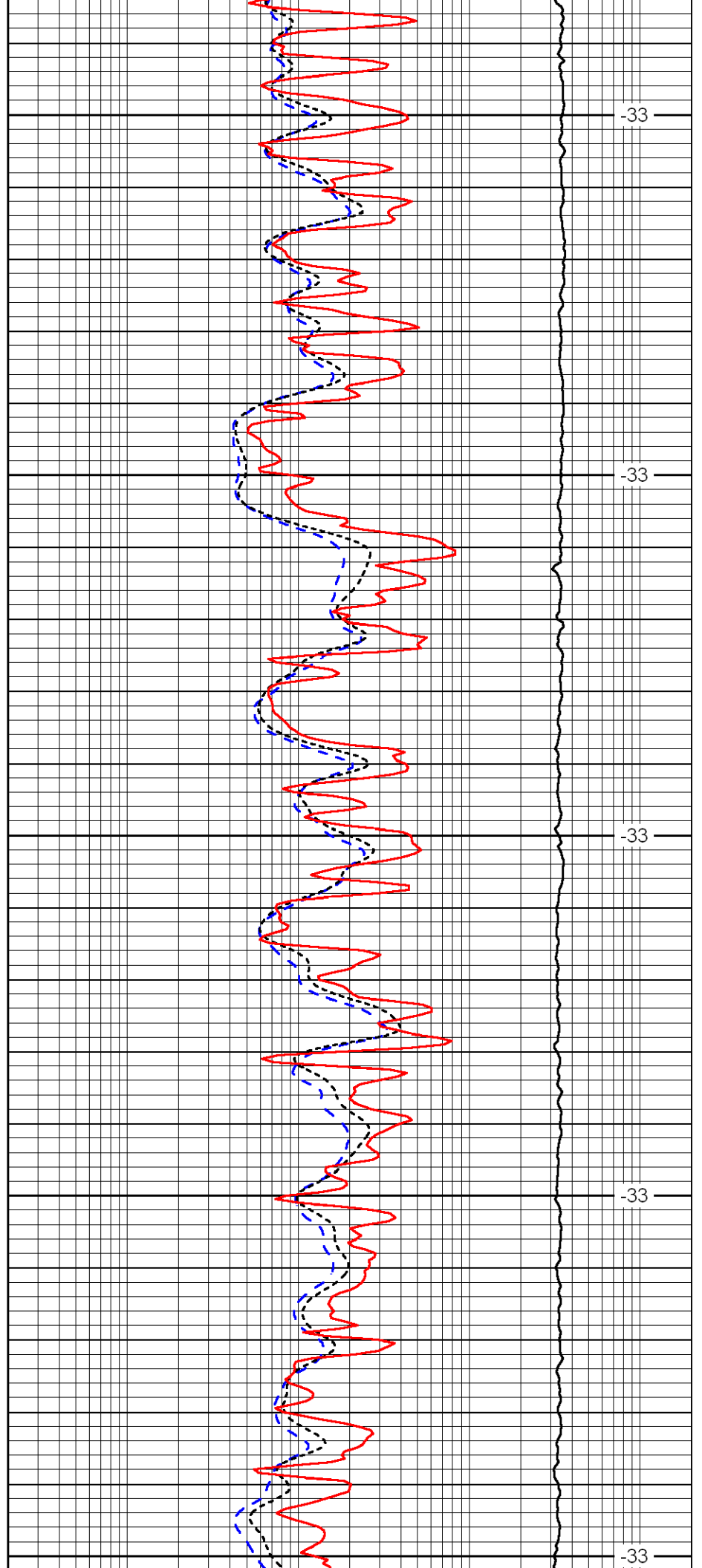
3500

3550

3600

3650

3700



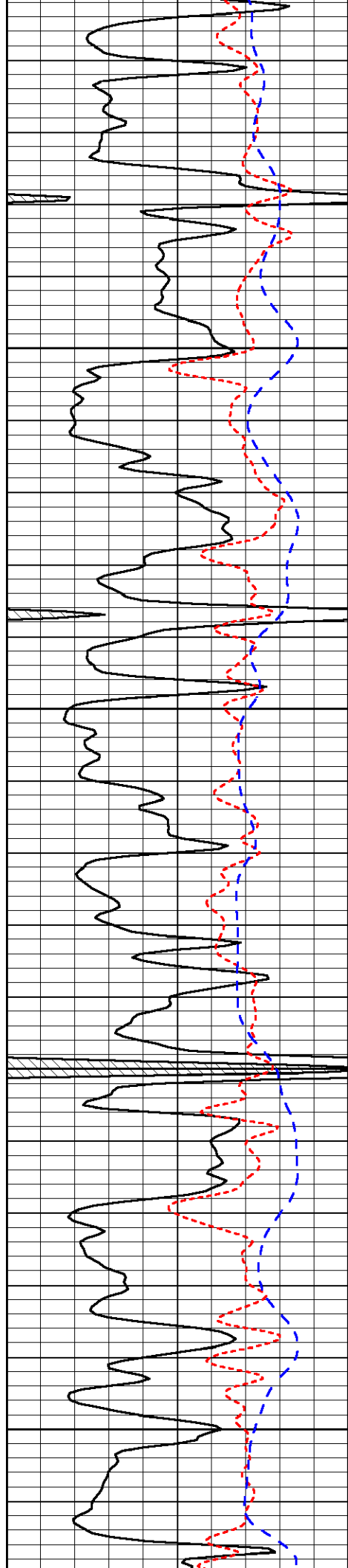
-33

-33

-33

-33

-33

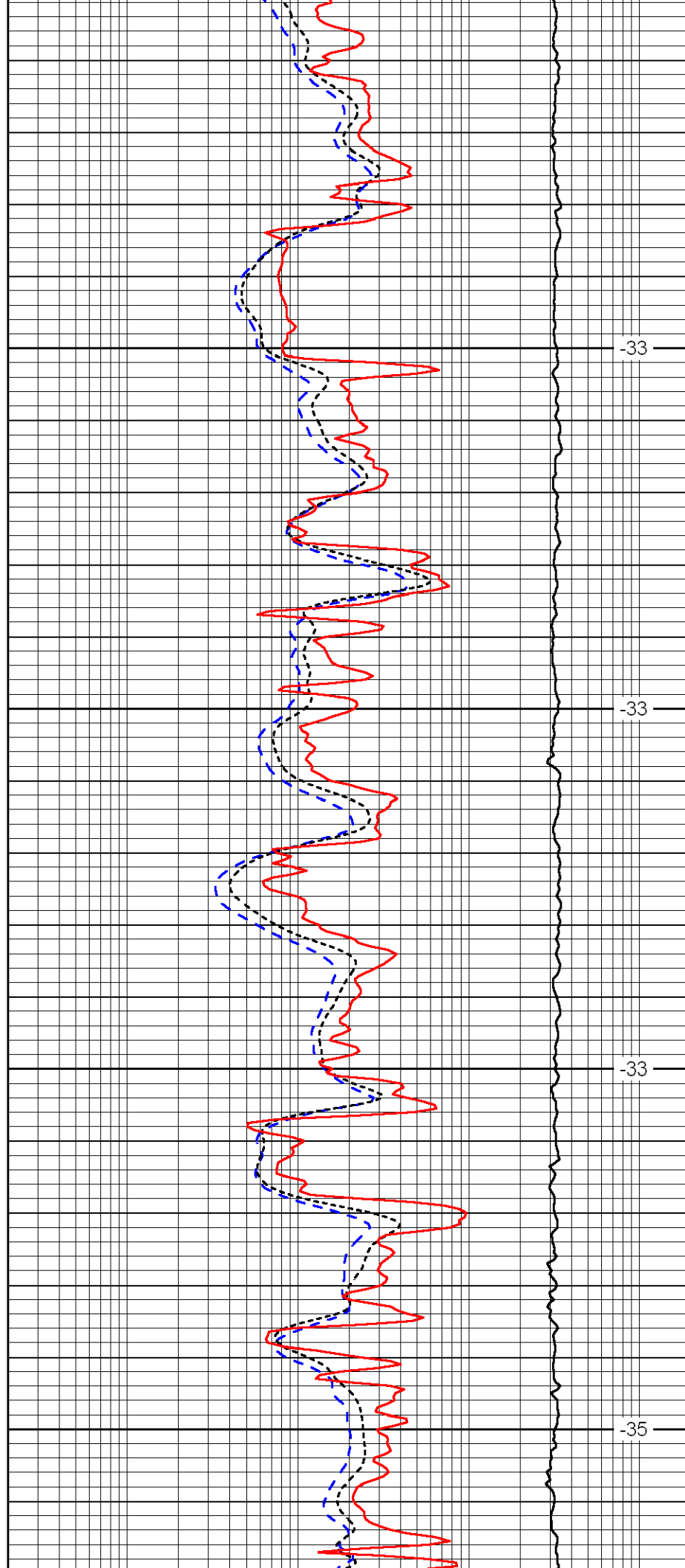


3750

3800

3850

3900

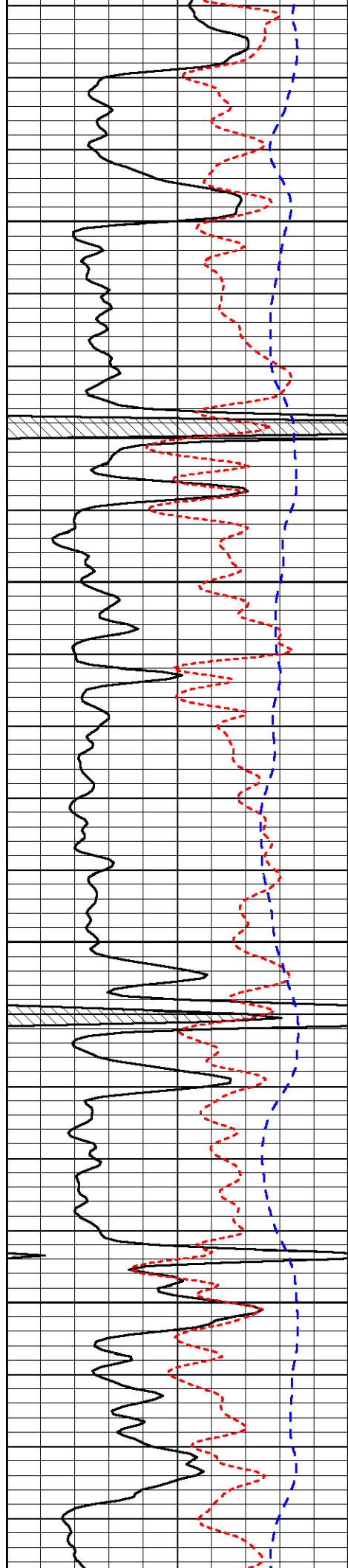


-33

-33

-33

-35

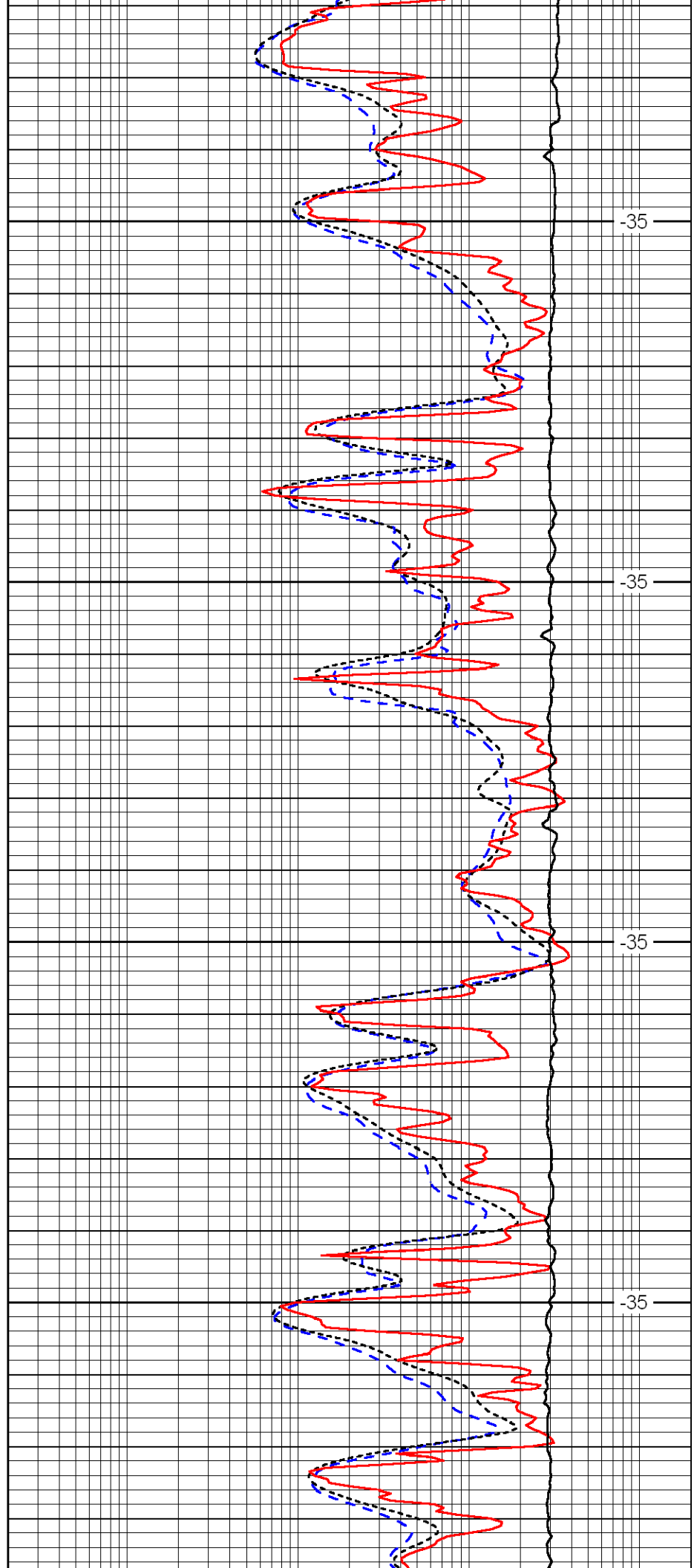


3950

4000

4050

4100

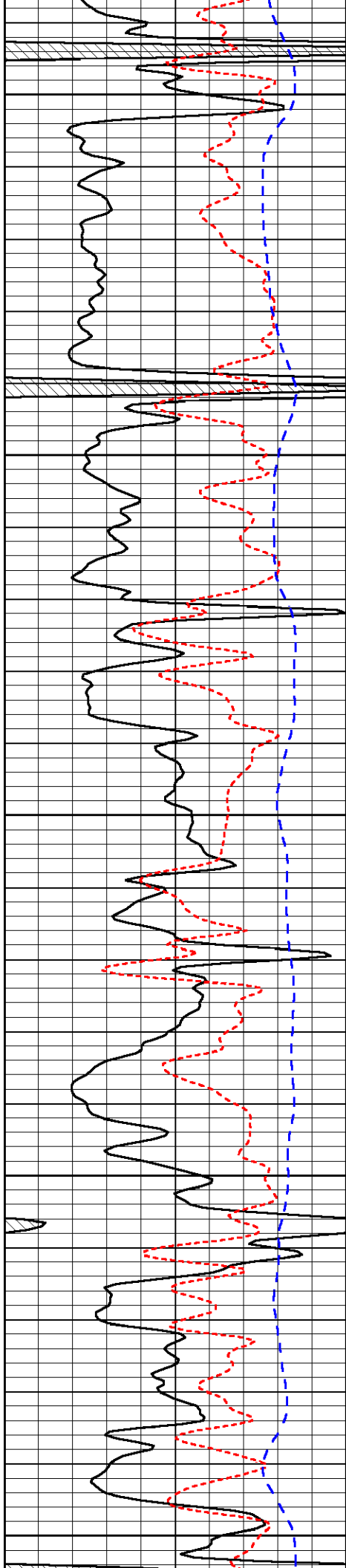


-35

-35

-35

-35



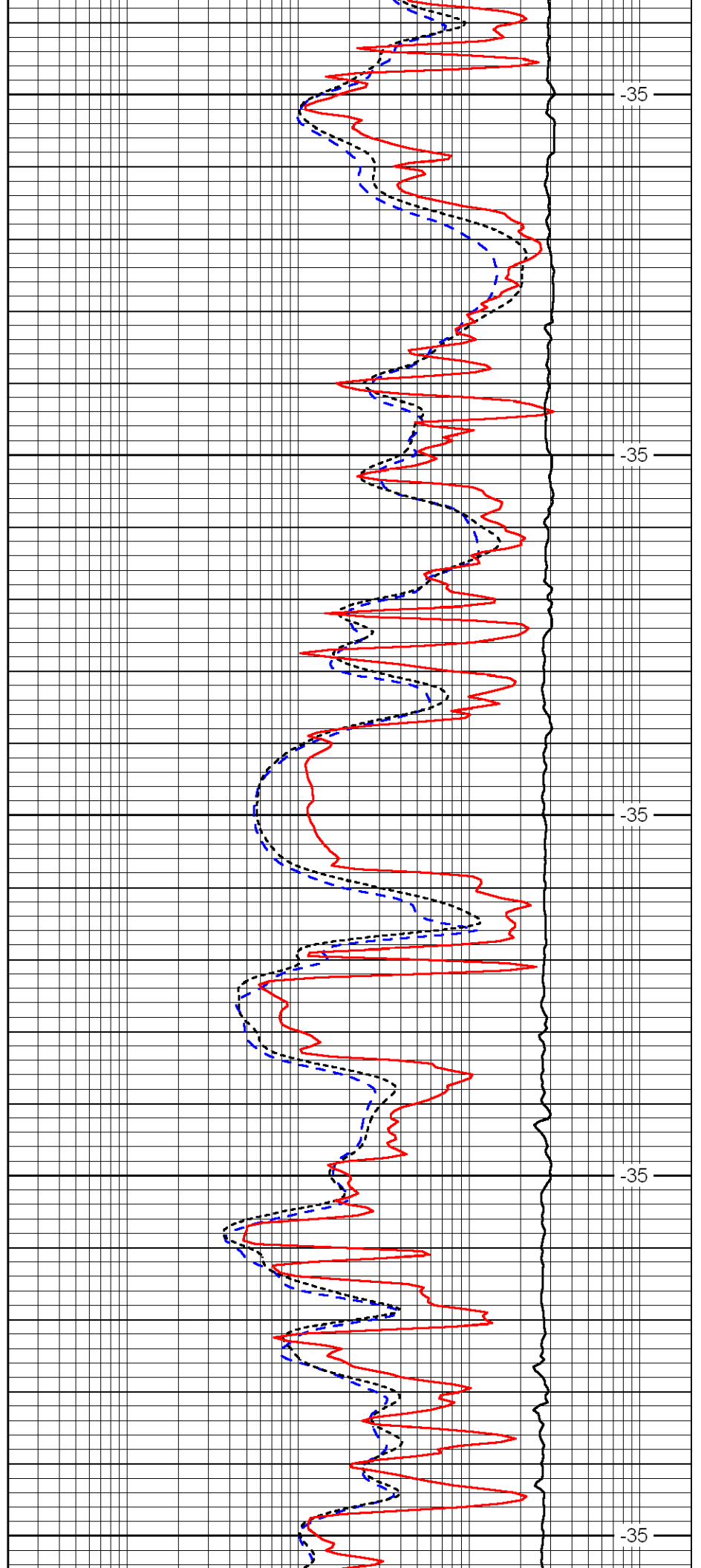
4150

4200

4250

4300

4350



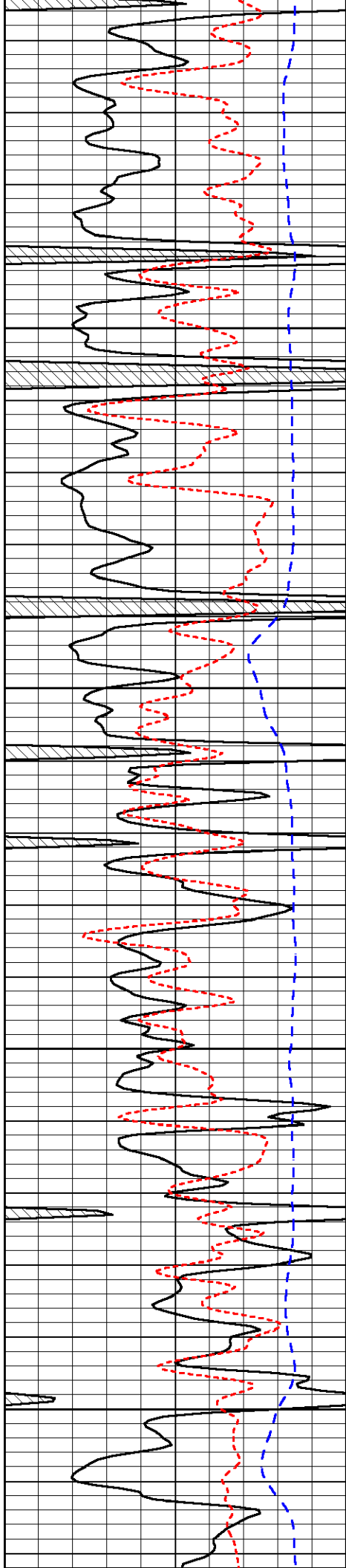
-35

-35

-35

-35

-35

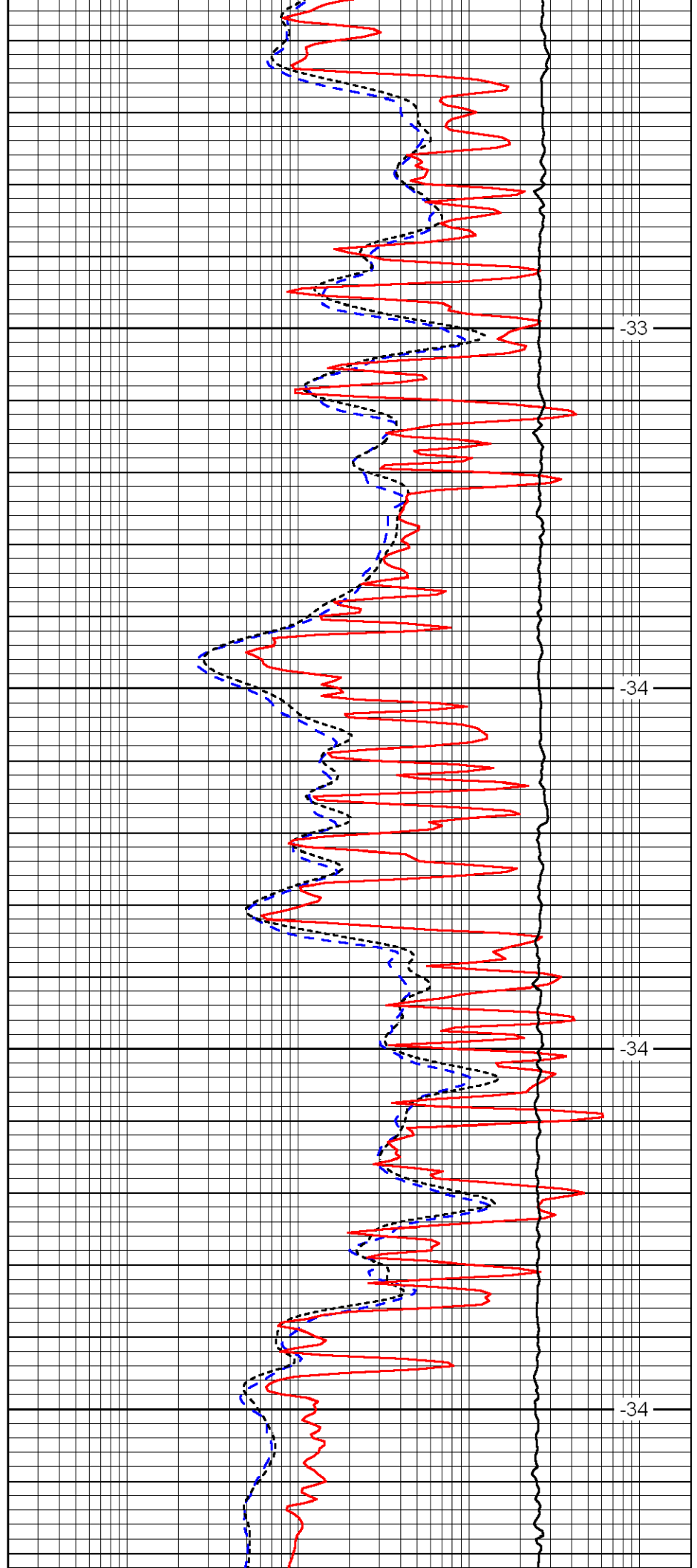


4400

4450

4500

4550

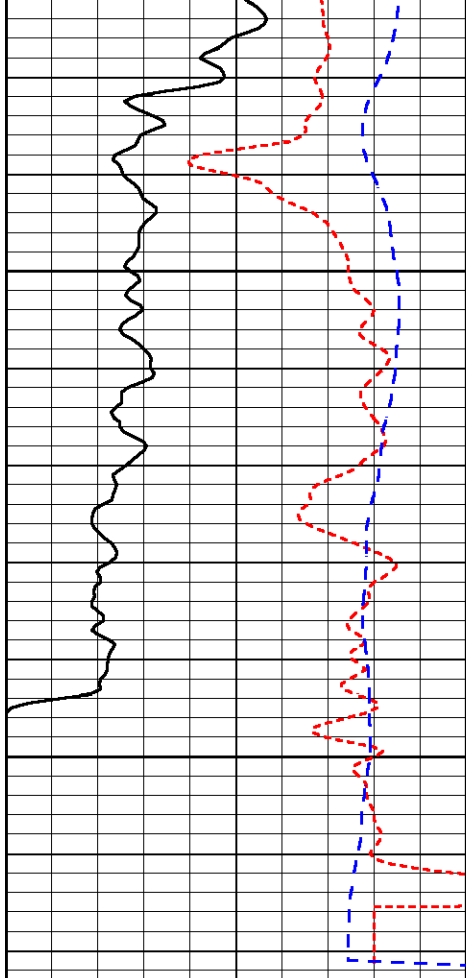


-33

-34

-34

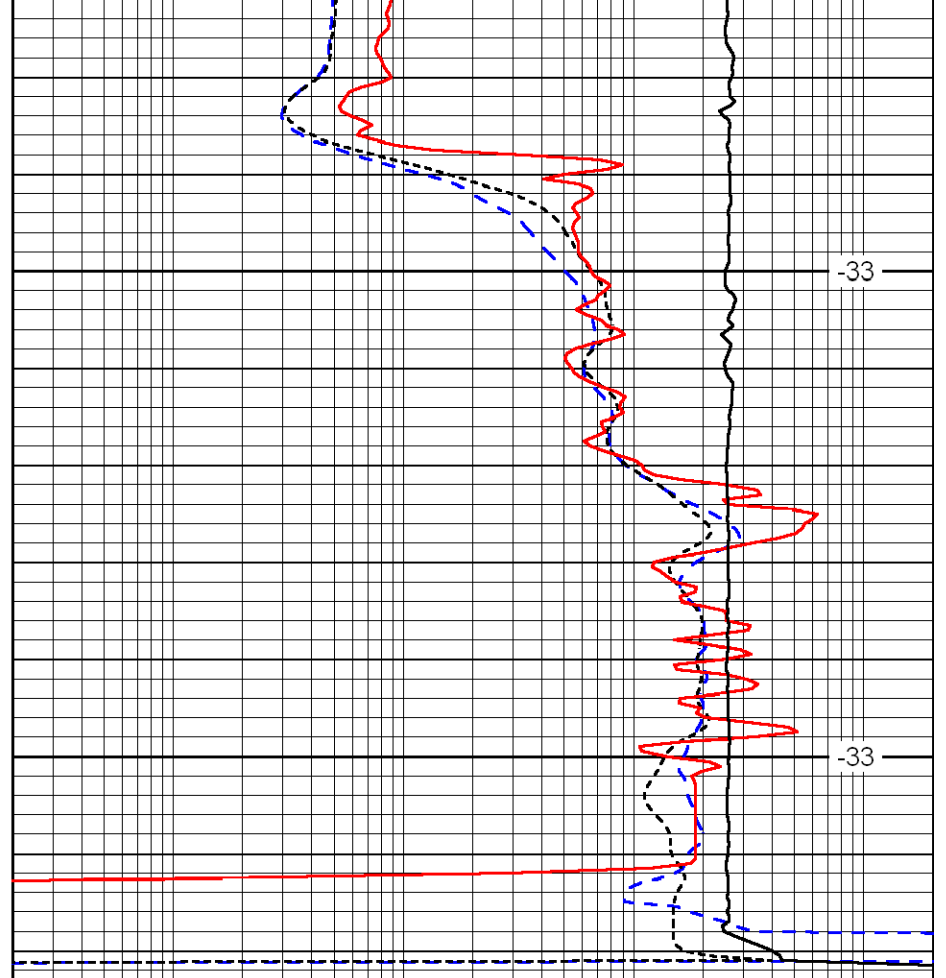
-34



0	Gamma Ray	150
-160	RXO/RT	40
-200	SP	0

4600

4650



-33

-33

0.2	Deep Resistivity	2000
0.2	Medium Resistivity	2000
0.2	Shallow Resistivity	2000
10000	Line Tension	0

LSPD