



## Dual Compensated Porosity Log

**DIGITAL LOG** (785) 625-3858

API No.	15-109-21076-00-00		
Company	Landmark Resources, Inc.		
Well	Gerber #1-16		
Field	Wildcat		
County	Logan		State Kansas
Location	NE SW SW NE 2139\FNL / 2303' FEL		
Sec: 16	Twp: 15S	Rge: 33W	
Permanent Datum	Ground Level	Elevation 2919	
Log Measured From	Kelly Bushing	11 Ft. Above Perm. Datum	
Drilling Measured From	Kelly Bushing	K.B. 2930 D.F. G.L. 2919	
Other Services	DIL MEL/BHCS		

Date	2/28/2012		
Run Number	One		
Type Log	CNL / CDL		
Depth Driller	4665		
Depth Logger	4666		
Bottom Logged Interval	4645		
Top Logged Interval	3400		
Type Fluid In Hole	Chemical		
Salinity, PPM CL	5800		
Density	9.1		
Level	Full		
Max. Rec. Temp. F	123		
Operating Rig Time	5 Hours		
Equipment -- Location	15 Hays		
Recorded By	R. Barnhart		
Witnessed By	Terry McLeod		

Borehole Record				Casing Record			
Run No	Bit	From	To	Size	Wgt.	From	To
One	12.25	00	216	8.625	23#	00	216
Two	7.875	216	TD				

<<< Fold Here >>>

All interpretations are opinions based on inferences from electrical or other measurements and we cannot and do not guarantee the accuracy or correctness of any interpretation, and we shall not, except in the case of gross or willful negligence on our part, be liable or responsible for any loss, costs, damages, or expenses incurred or sustained by anyone resulting from any interpretation made by any of our officers, agents or employees. These interpretations are also subject to our general terms and conditions set out in our current Price Schedule.

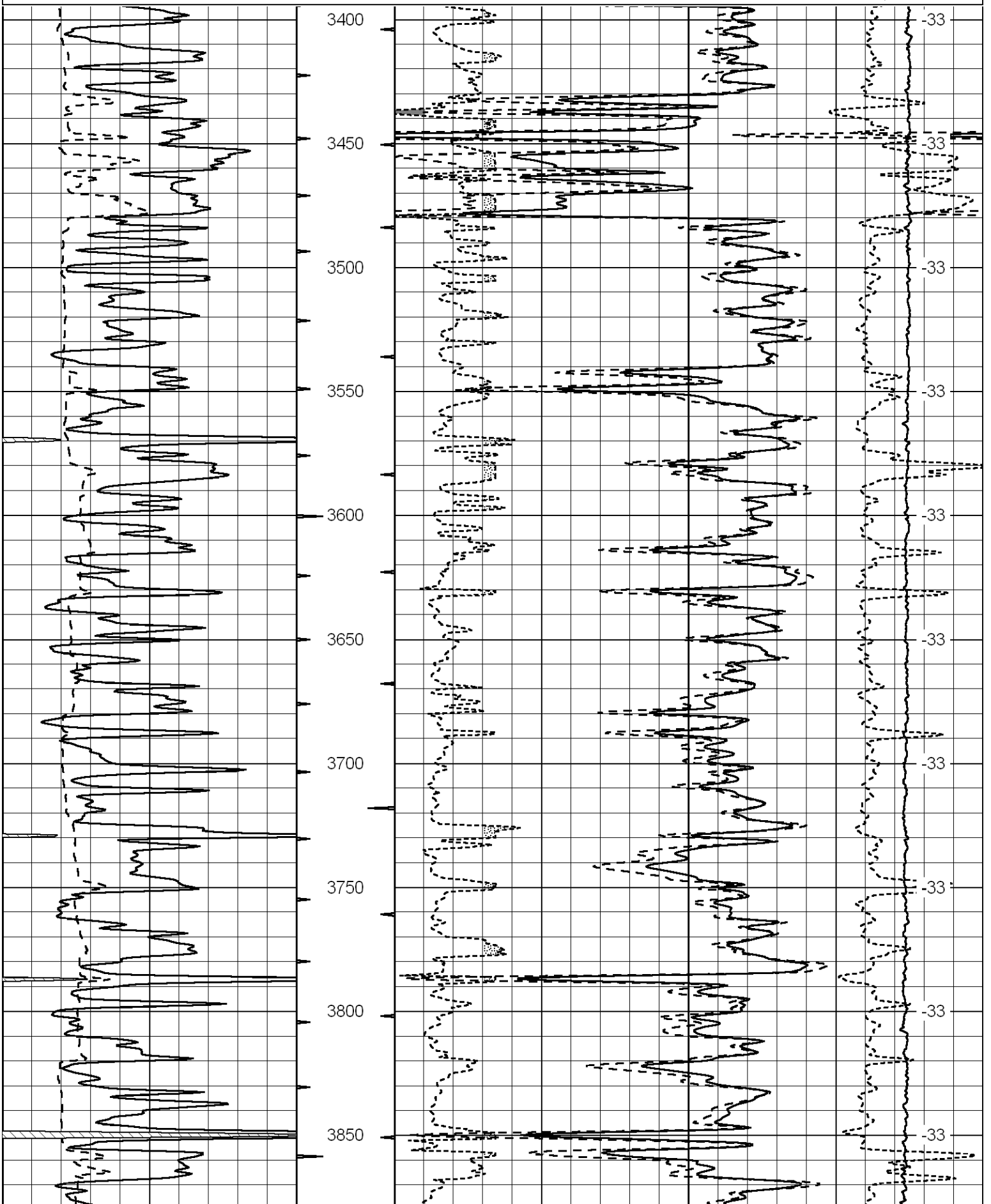
**Comments**

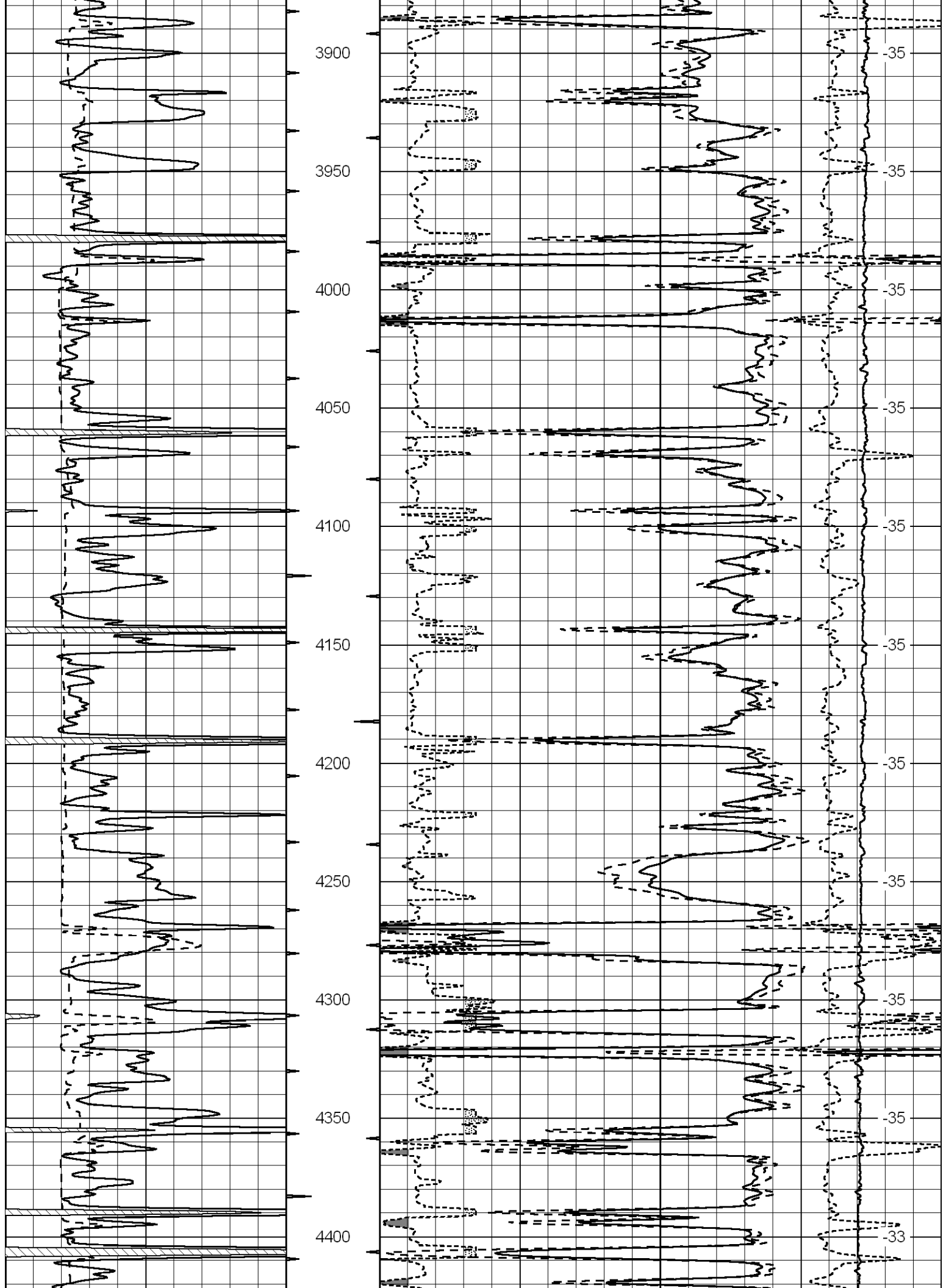
Thank you for using Log-Tech, Inc.  
(785) 625-3858  
  
Oakley, KS:  
23S, 5W, 2S, 2 1/2W,  
S into

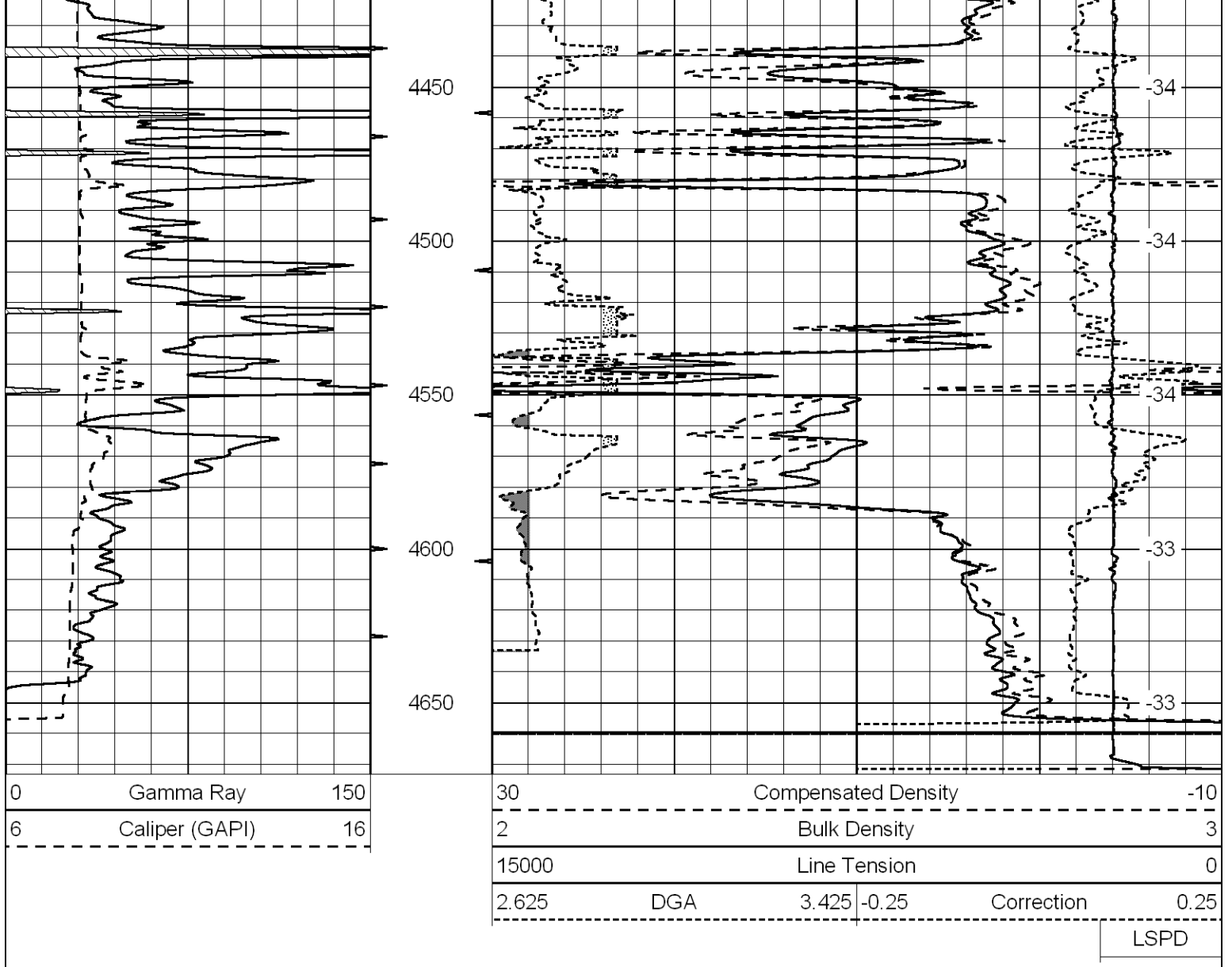
Database File: landmarkhd.db  
 Dataset Pathname: dil/lndmain  
 Presentation Format: cdl  
 Dataset Creation: Tue Feb 28 14:46:30 2012  
 Charted by: Depth in Feet scaled 1:600

0	Gamma Ray	150
6	Caliper (GAPI)	16

30	Compensated Density		-10
2	Bulk Density		3
15000	Line Tension		0
2.625	DGA	3.425	-0.25
Correction			0.25
LSPD			







Database File: landmarkhd.db  
 Dataset Pathname: dil/Indmain  
 Presentation Format: cndlspec  
 Dataset Creation: Tue Feb 28 14:46:30 2012  
 Charted by: Depth in Feet scaled 1:240

