



Microresistivity Log

DIGITAL LOG (785) 625-3858

API No.	15-109-21076-00-00		
Company	Landmark Resources, Inc.		
Well	Gerber #1-16		
Field	Wildcat		
County	Logan	State	Kansas
Location	NE SW SW NE 2139FNL / 2303' FEL		
Sec: 16	Twp: 15S	Rge: 33W	
Permanent Datum	Ground Level	Elevation 2919	Other Services CNL/CDL DIL/BHCS
Log Measured From	Kelly Bushing	11 Ft. Above Perm. Datum	K.B. 2930
Drilling Measured From	Kelly Bushing		D.F. 2919
			G.L. 2919

Date	2/28/2012	
Run Number	Two	
Depth Driller	4665	
Depth Logger	4666	
Bottom Logged Interval	4665	
Top Log Interval	3400	
Casing Driller	8.625 @ 216	
Casing Logger	213	
Bit Size	7.875	
Type Fluid in Hole	Chemical	
Salinity, ppm CL	5800	
Density / Viscosity	9.1	62
pH / Fluid Loss	11.0	8.0
Source of Sample	Flowline	
Rm @ Meas. Temp	1.20 @	65
Rmf @ Meas. Temp	0.90 @	65
Rmc @ Meas. Temp	1.62 @	65
Source of Rmf / Rmc	Charts	
Rm @ BHT	0.64 @	123
Operating Rig Time	5 Hours	
Max Rec. Temp. F	123	
Equipment Number	15	
Location	Hays	
Recorded By	R. Barnhart	
Witnessed By	Terry McLeod	

<<< Fold Here >>>

All interpretations are opinions based on inferences from electrical or other measurements and we cannot and do not guarantee the accuracy or correctness of any interpretation, and we shall not, except in the case of gross or willful negligence on our part, be liable or responsible for any loss, costs, damages, or expenses incurred or sustained by anyone resulting from any interpretation made by any of our officers, agents or employees. These interpretations are also subject to our general terms and conditions set out in our current Price Schedule.

Comments

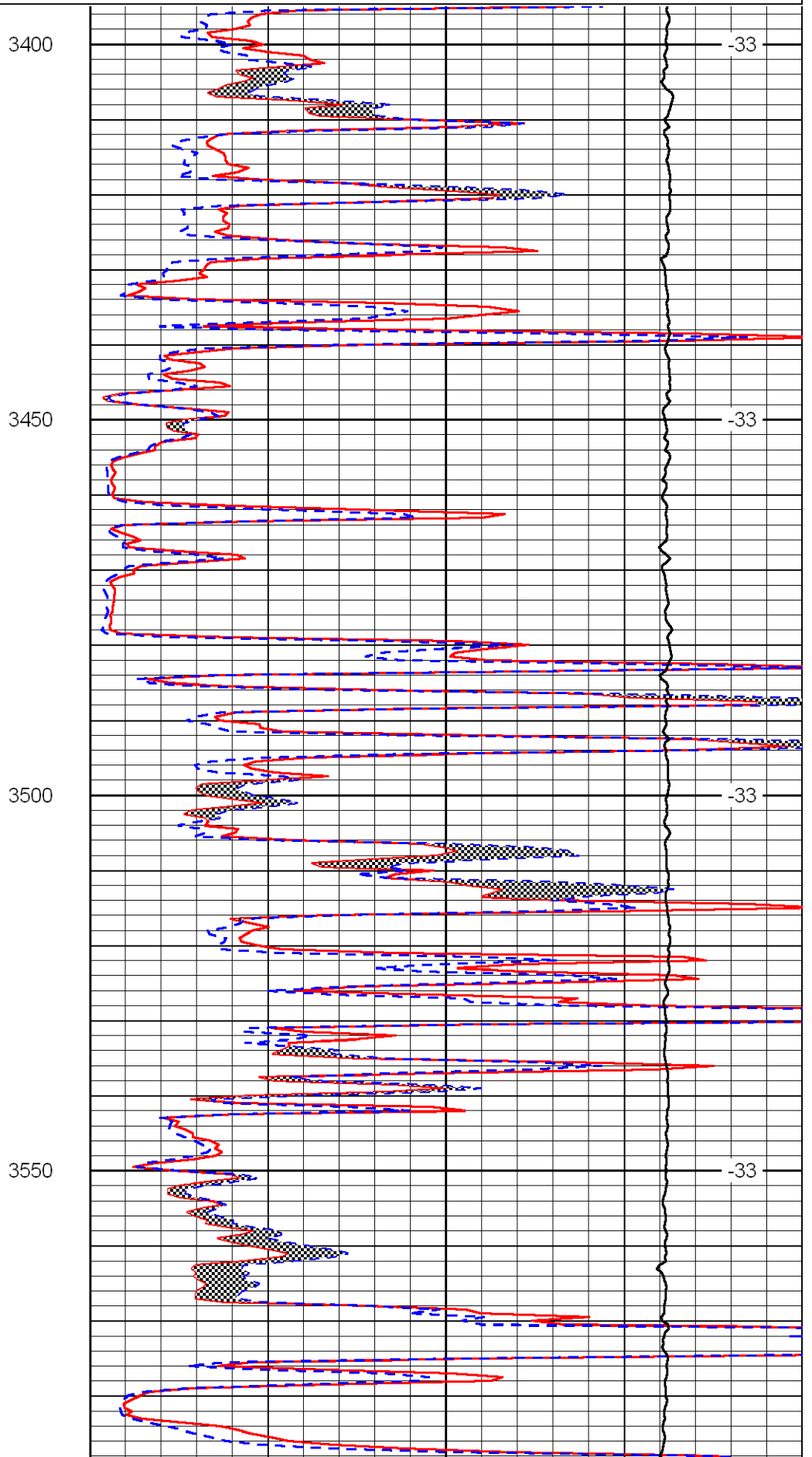
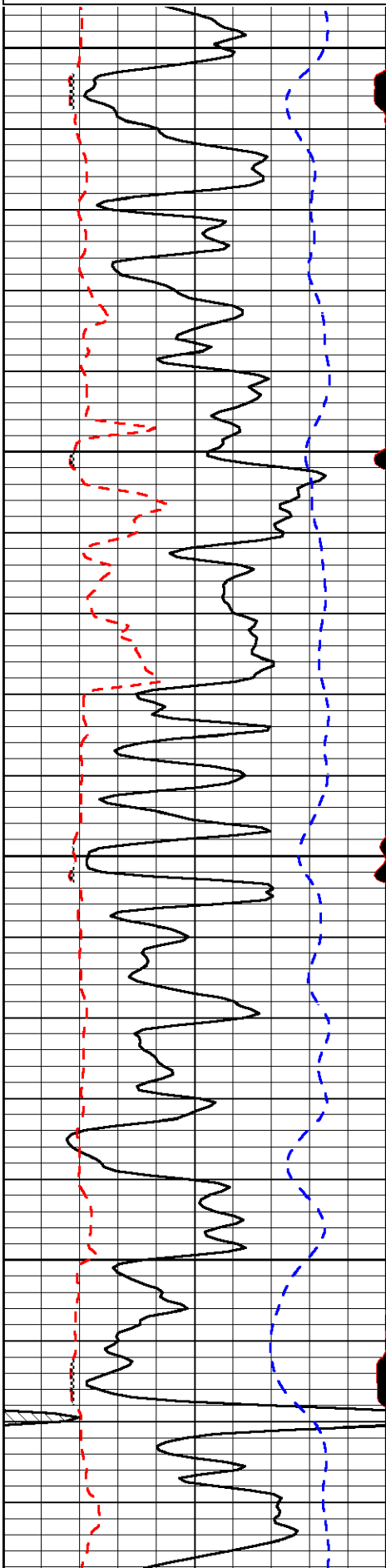
Thank you for using Log-Tech, Inc.
(785) 625-3858

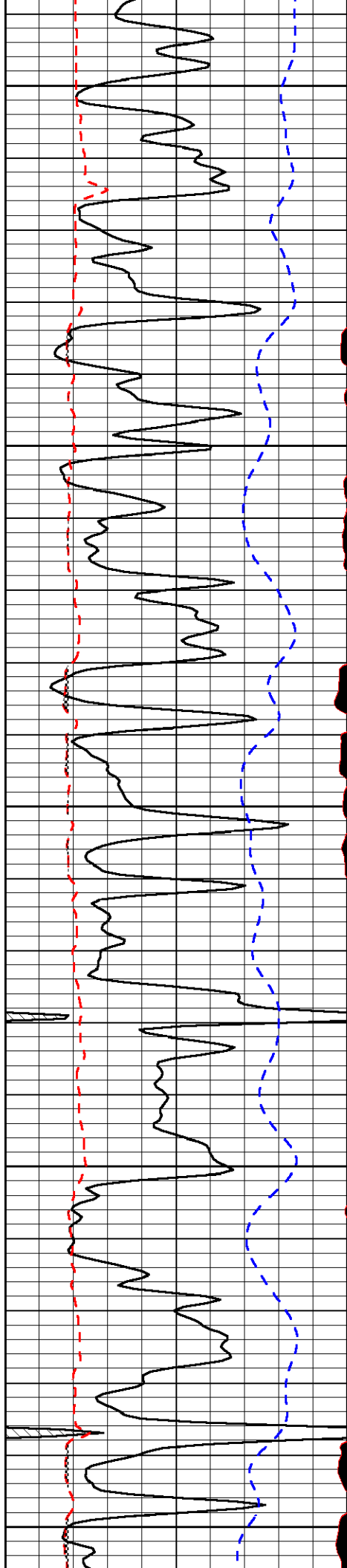
Oakley, KS:
23S, 5W, 2S, 2 1/2W,
S into

Database File: landmarkhd.db
 Dataset Pathname: dil/lndmain
 Presentation Format: micro
 Dataset Creation: Tue Feb 28 14:46:30 2012
 Charted by: Depth in Feet scaled 1:240

0	Gamma Ray	150
6	MCAL (GAPI)	16
2.875	Mud Cake (GAPI)	7.875
-200	SP	0

0	Micro Inverse 1 X 1	40
0	Micro Normal 2"	40
10000	Line Weight	0
		LSPD





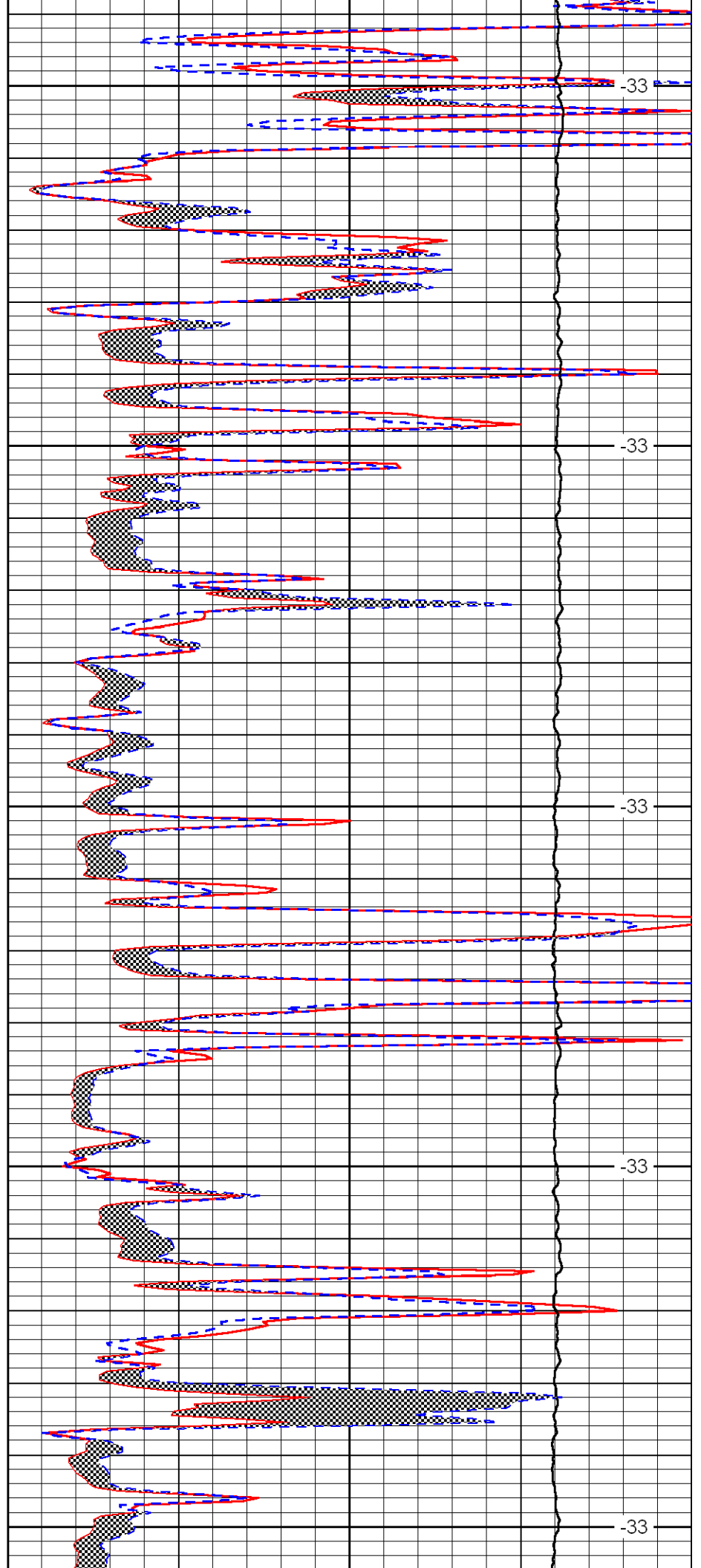
3600

3650

3700

3750

3800



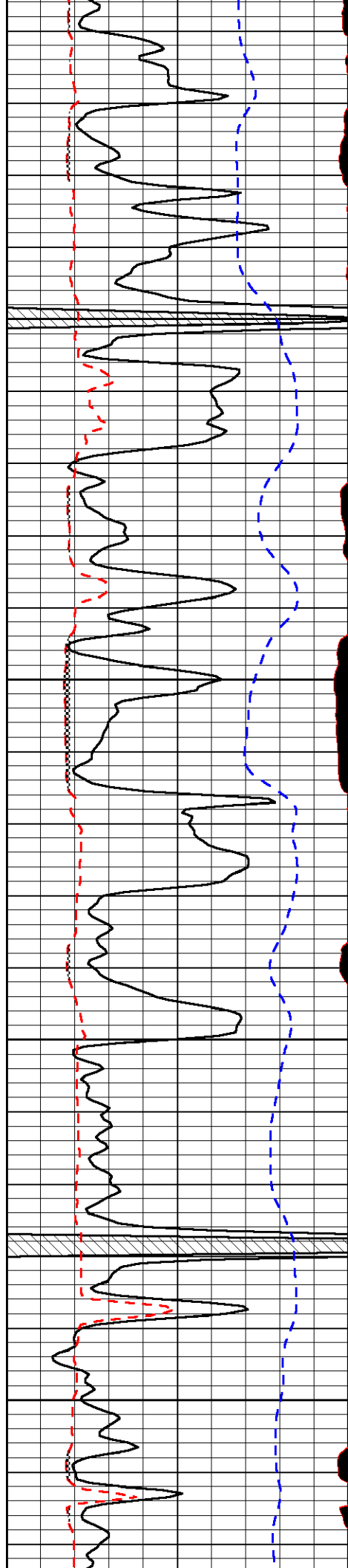
-33

-33

-33

-33

-33

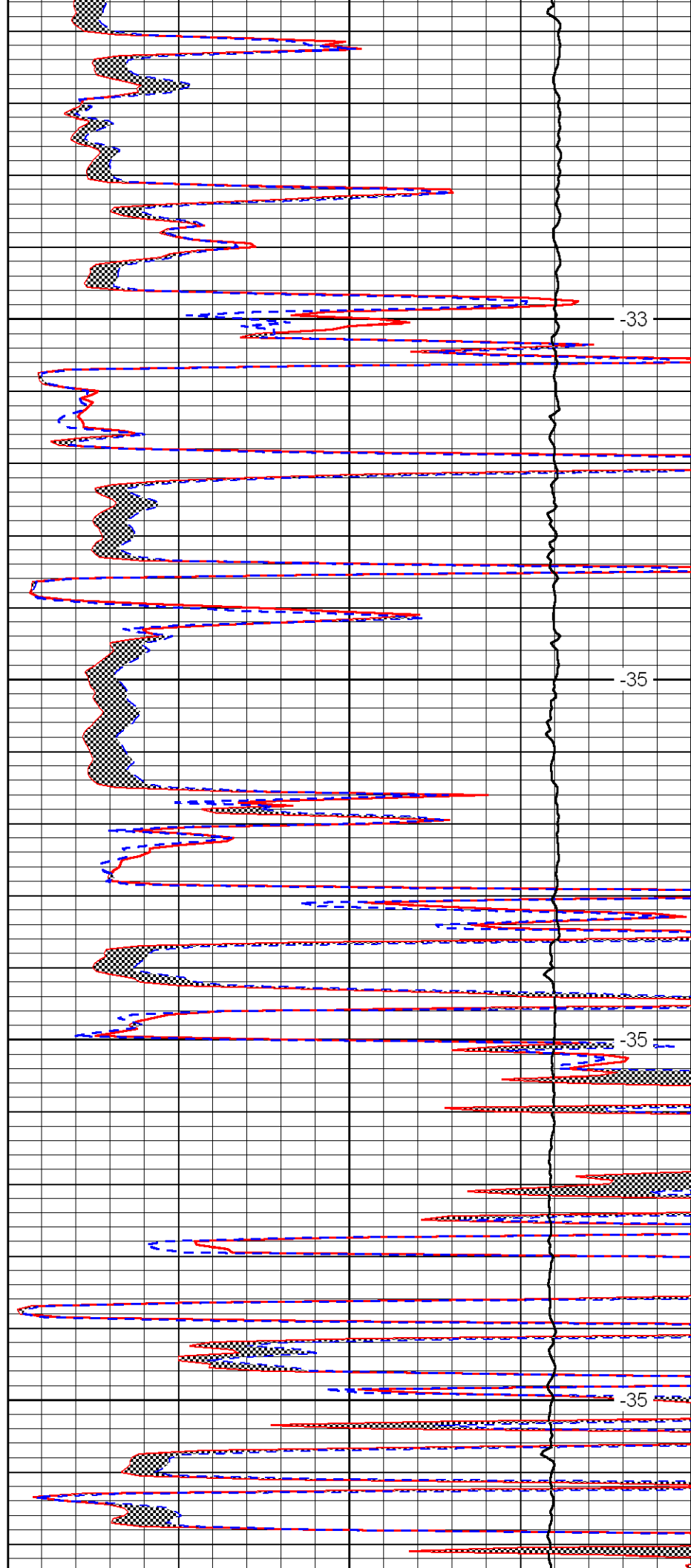


3850

3900

3950

4000

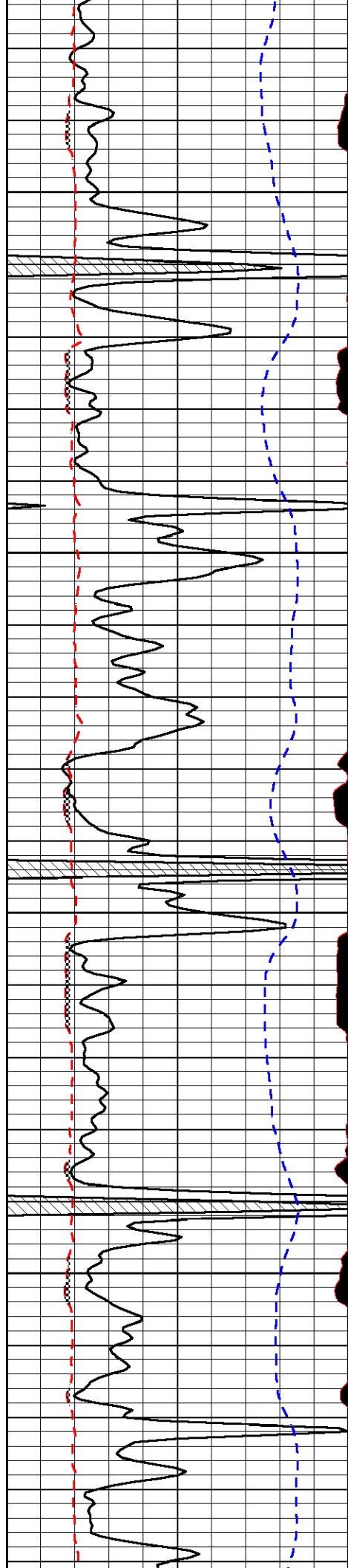


-33

-35

-35

-35

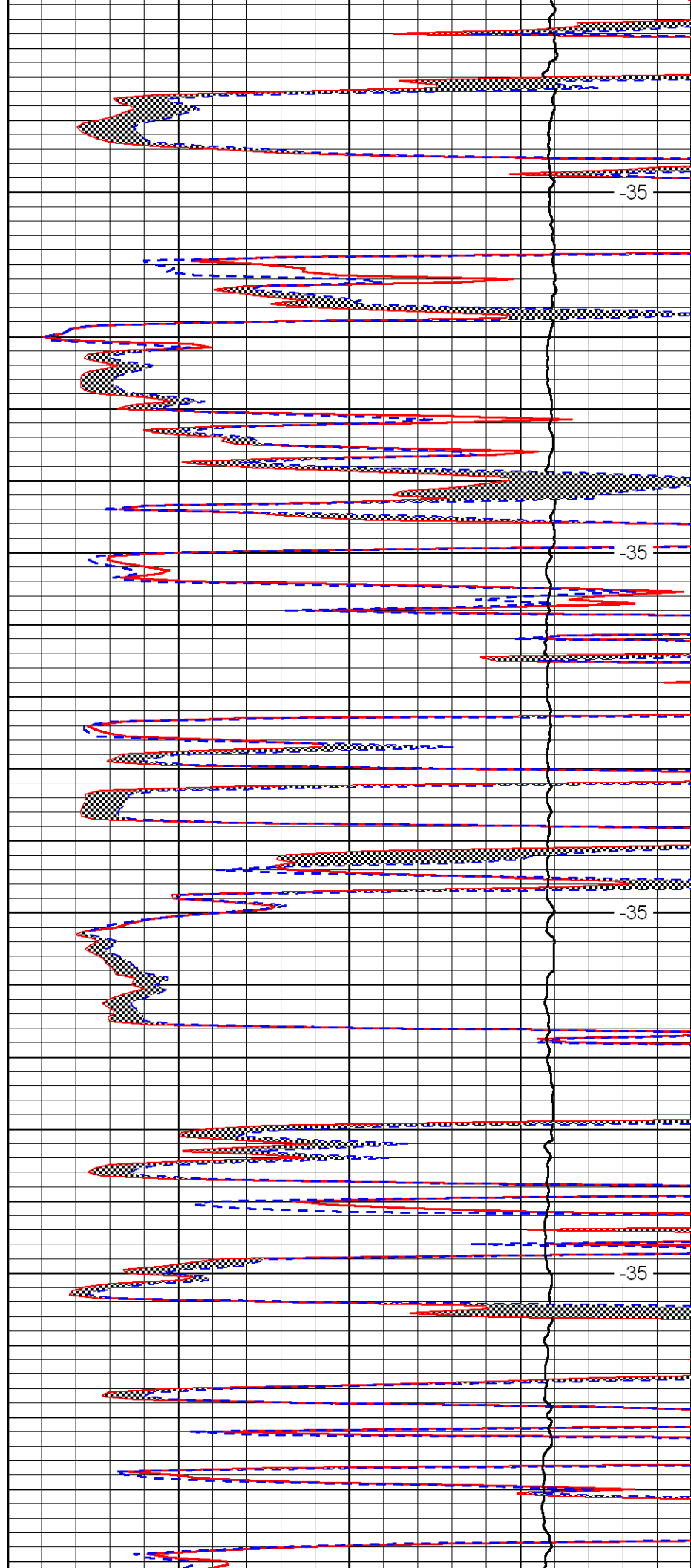


4050

4100

4150

4200

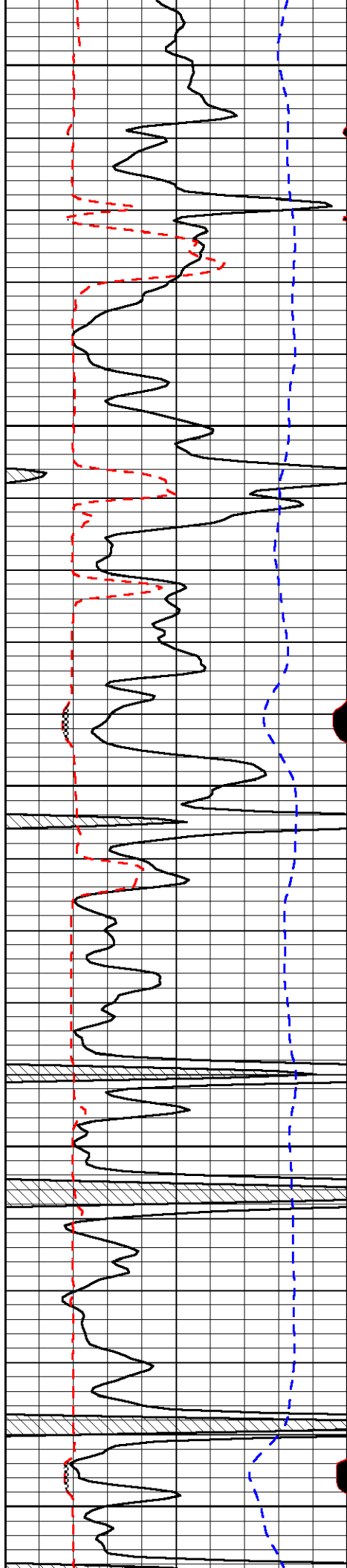


-35

-35

-35

-35



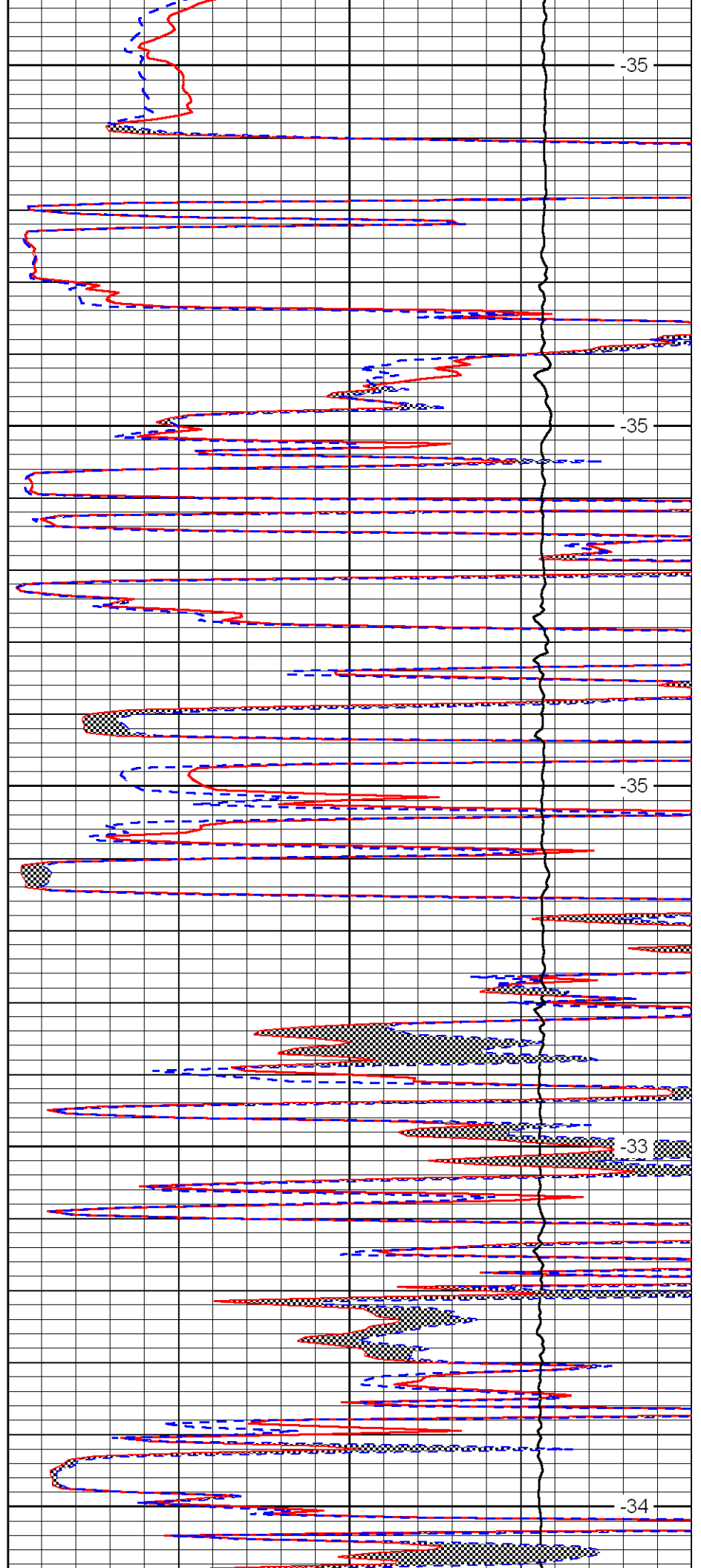
4250

4300

4350

4400

4450



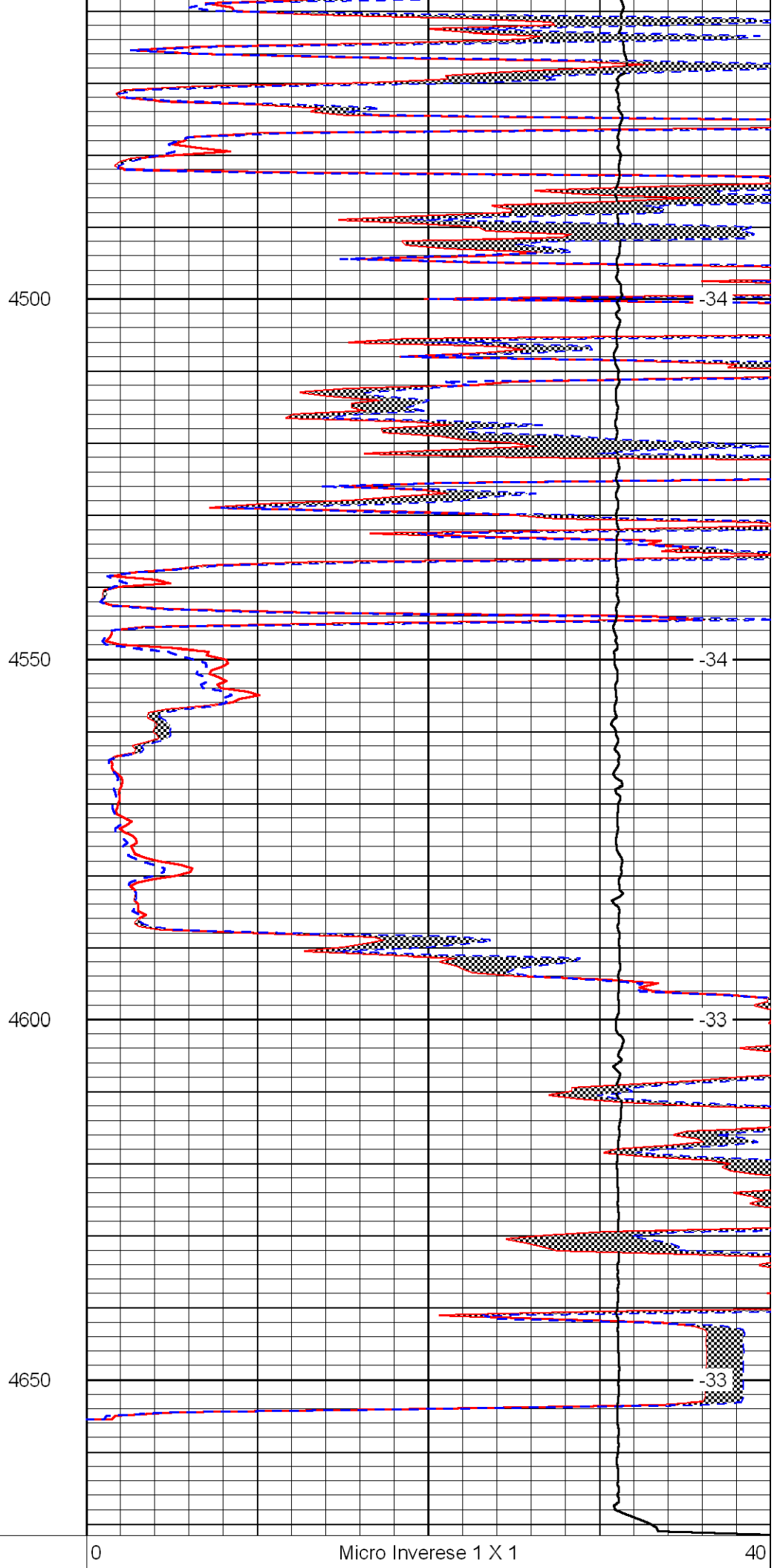
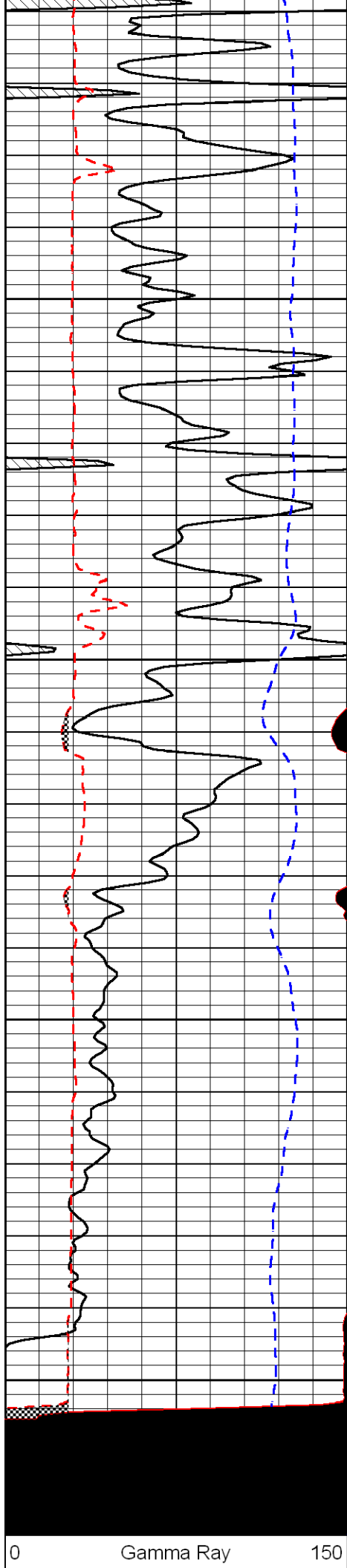
-35

-35

-35

-33

-34



6	MCAL (GAPI)	16
2.875	Mud Cake (GAPI)	7.875
-200	SP	0

0	Micro Normal 2"	40
10000	Line Weight	0
		LSPD