



**Borehole Compensated
Sonic Log**

DIGITAL LOG (785) 625-3858

API No. 15-109-21076-00-00	Company Landmark Resources, Inc.	Location NE SW SW NE 2139\FNL / 2303' FEL	Other Services CNL/CDL MEL/DIL
	Well Gerber #1-16	Elevation 2919	K.B. 2930
	Field Wildcat	11 Ft. Above Perm. Datum	D.F. 2919
	County Logan		G.L. 2919
	State Kansas		

Permanent Datum	Ground Level	
Log Measured From	Kelly Bushing	
Drilling Measured From	Kelly Bushing	
Date	2/28/2012	
Run Number	Two	
Type Log	BHC Sonic	
Depth Driller	4665	
Depth Logger	4666	
Bottom Logged Interval	4655	
Top Logged Interval	200	
Type Fluid In Hole	Chemical	
Salinity, PPM CL	5800	
Density	9.1	
Level	Full	
Max. Rec. Temp. F	123	
Operating Rig Time	5 Hours	
Equipment -- Location	15 Hays	
Recorded By	R. Barnhart	
Witnessed By	Terry McLeod	

Borehole Record				Casing Record			
Run No	Bit	From	To	Size	Wgt.	From	To
One	12.25	00	216	8.625	23#	00	216
Two	7.875	216	TD				

<<< Fold Here >>>

All interpretations are opinions based on inferences from electrical or other measurements and we cannot and do not guarantee the accuracy or correctness of any interpretation, and we shall not, except in the case of gross or willful negligence on our part, be liable or responsible for any loss, costs, damages, or expenses incurred or sustained by anyone resulting from any interpretation made by any of our officers, agents or employees. These interpretations are also subject to our general terms and conditions set out in our current Price Schedule.

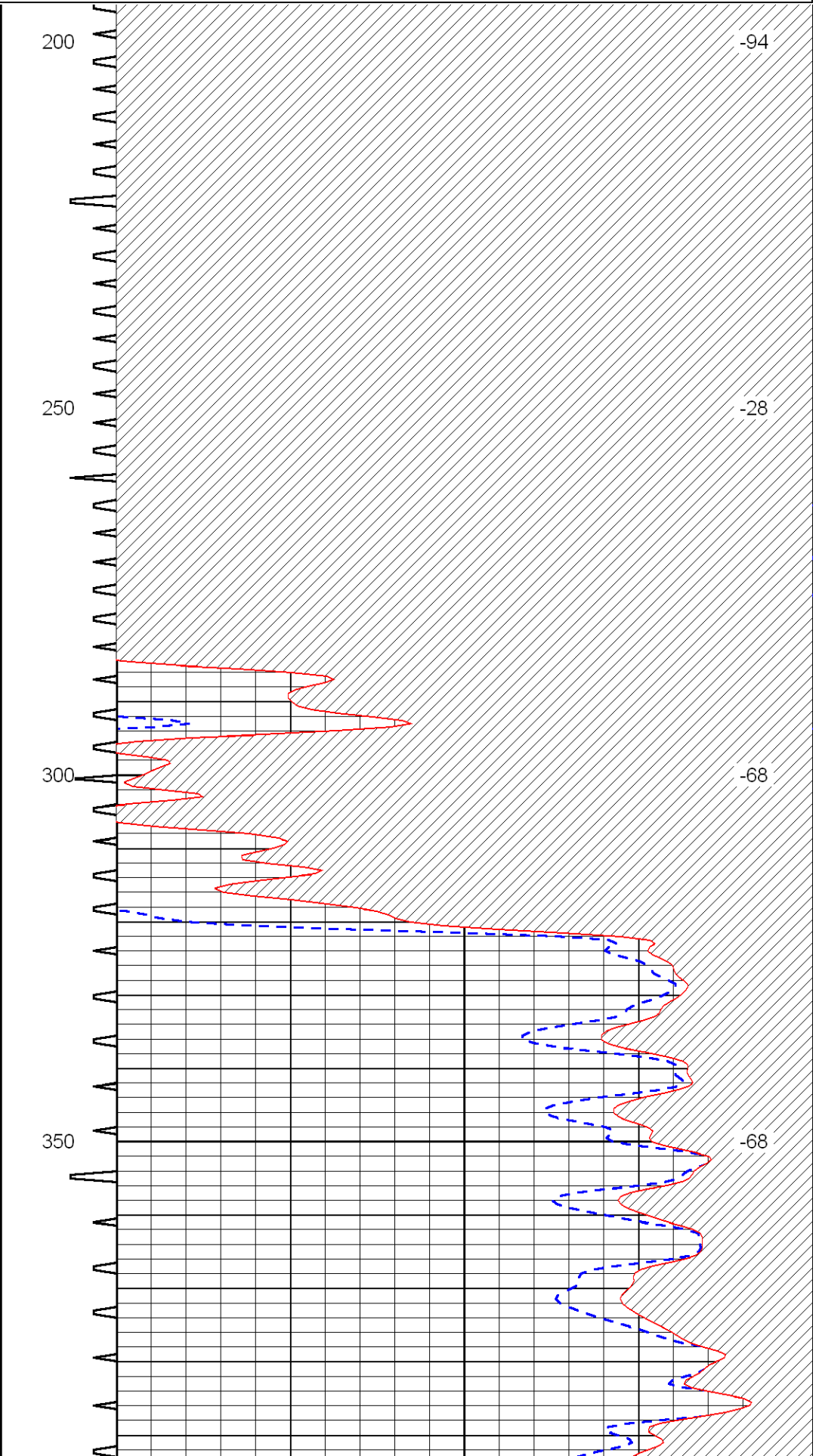
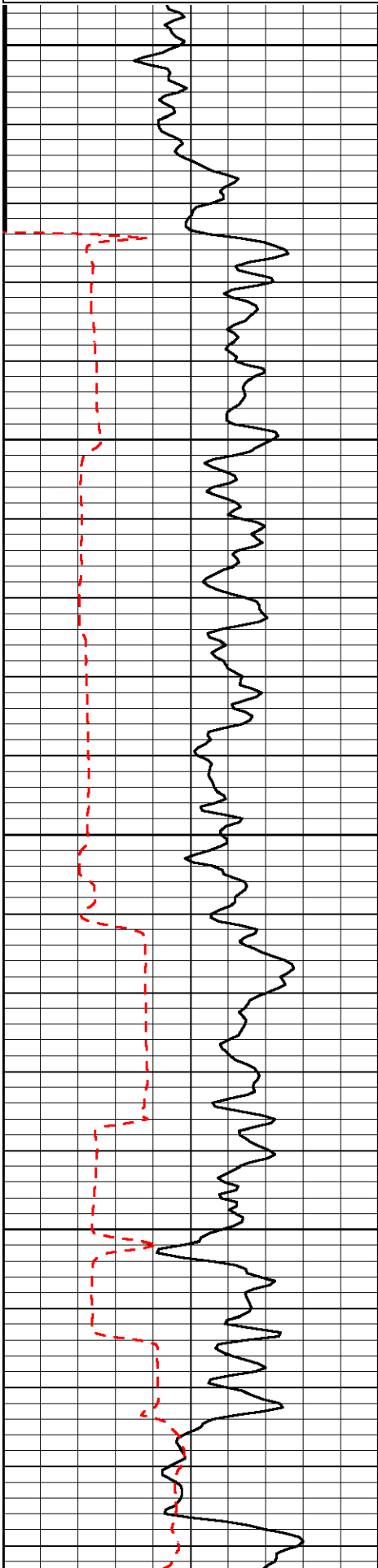
Comments

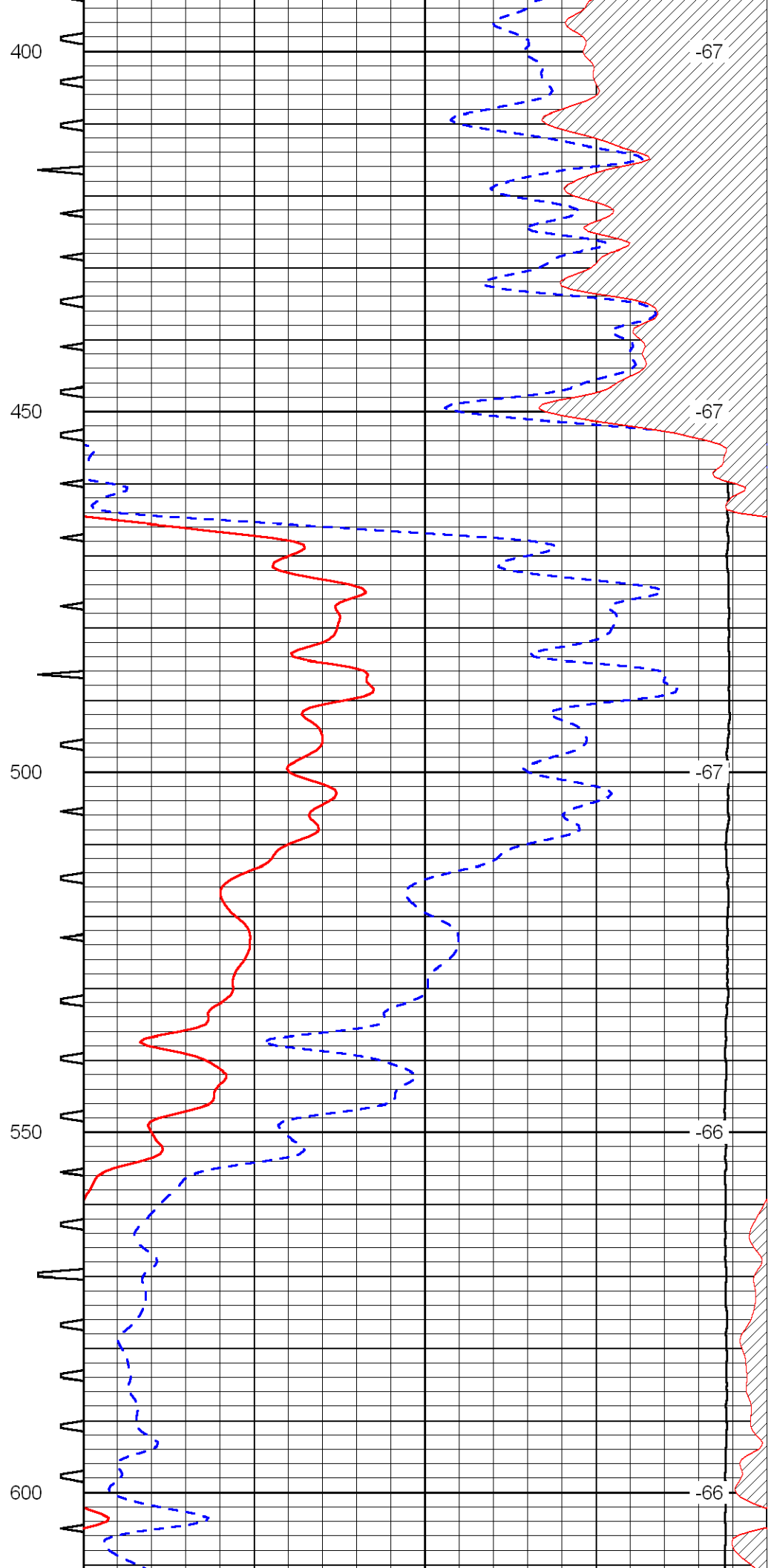
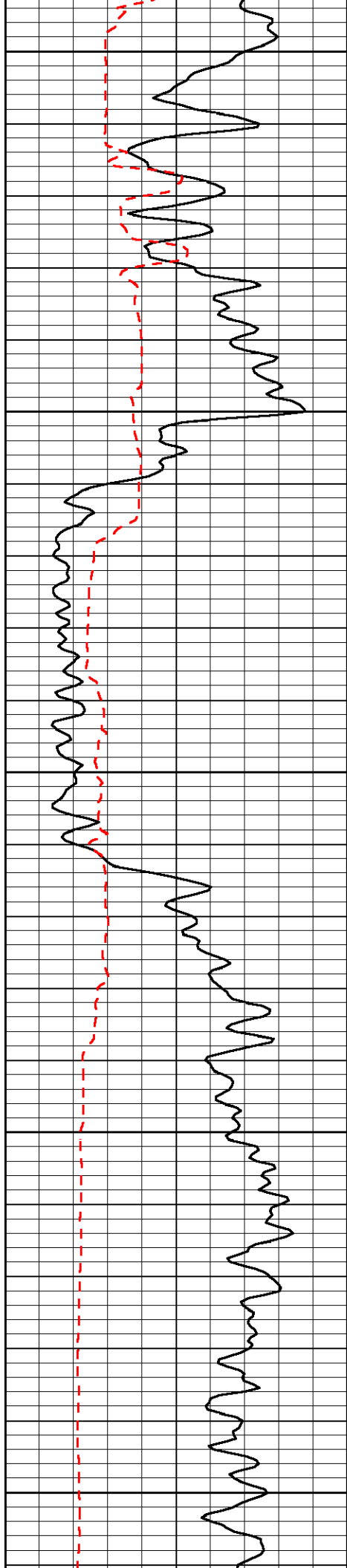
Thank you for using Log-Tech, Inc.
(785) 625-3858

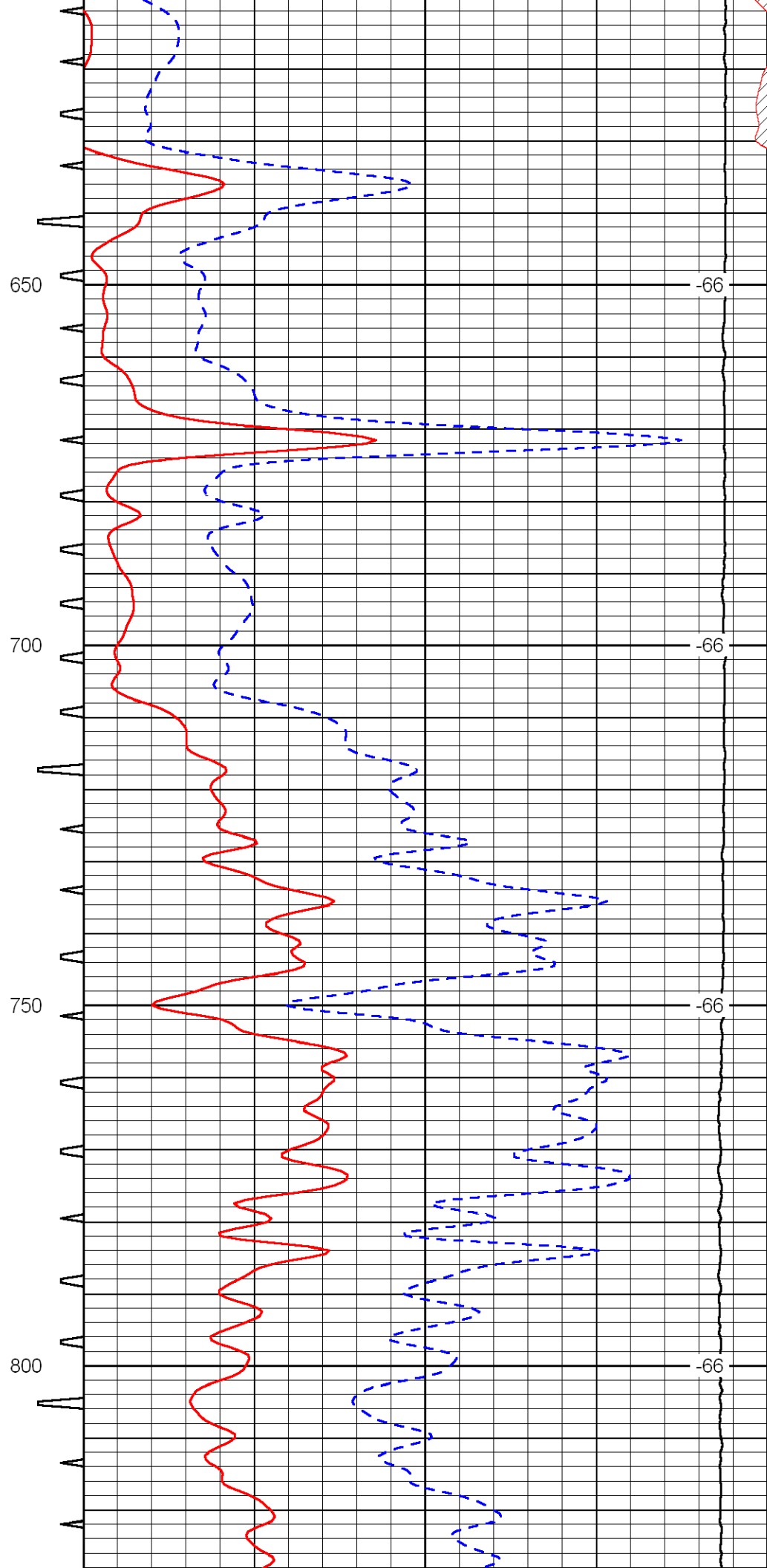
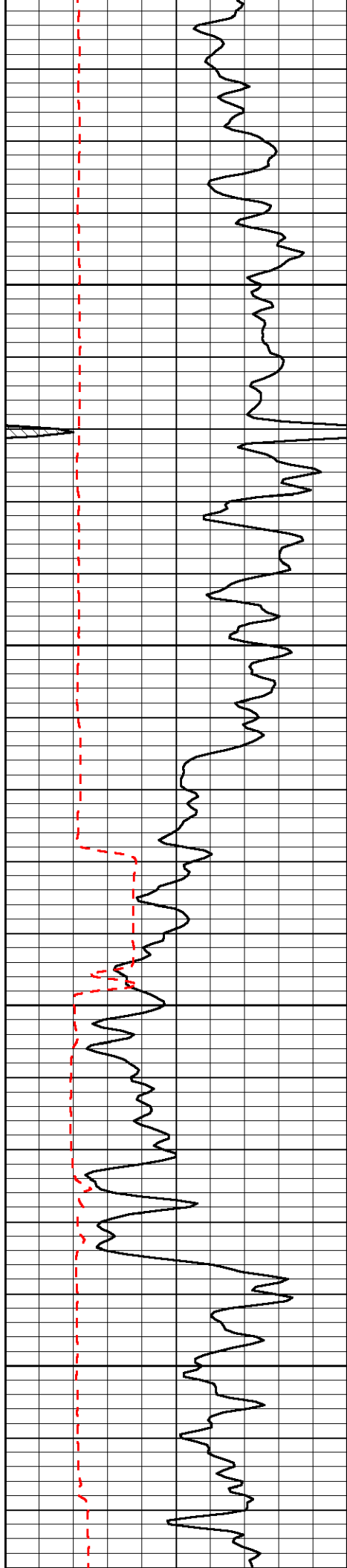
Oakley, KS:
23S, 5W, 2S, 2 1/2W,
S into

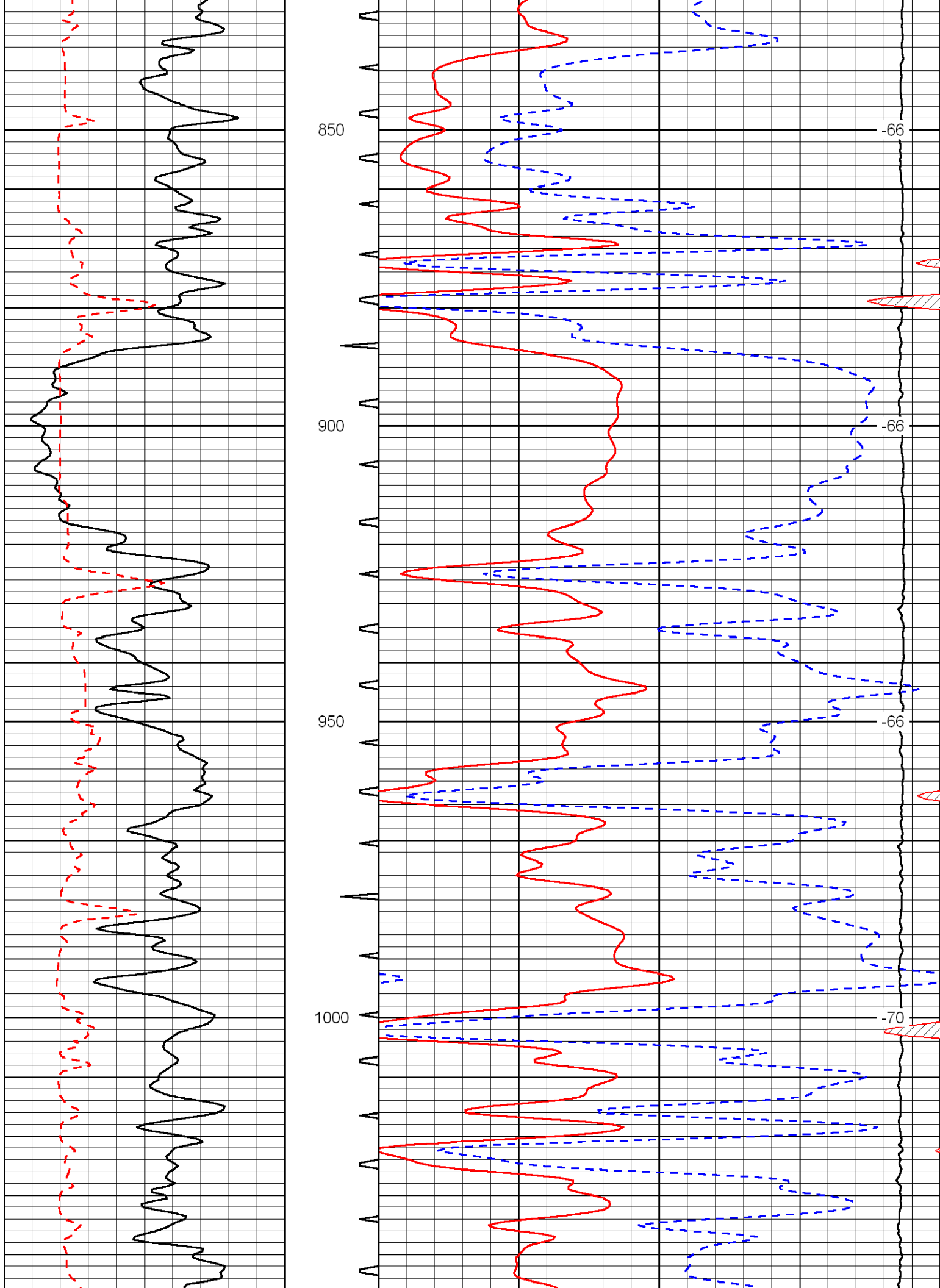
Database File:	landmarkhd.db
Dataset Pathname:	dil/lndmain
Presentation Format:	sonic
Dataset Creation:	Tue Feb 28 14:46:30 2012
Charted by:	Depth in Feet scaled 1:240

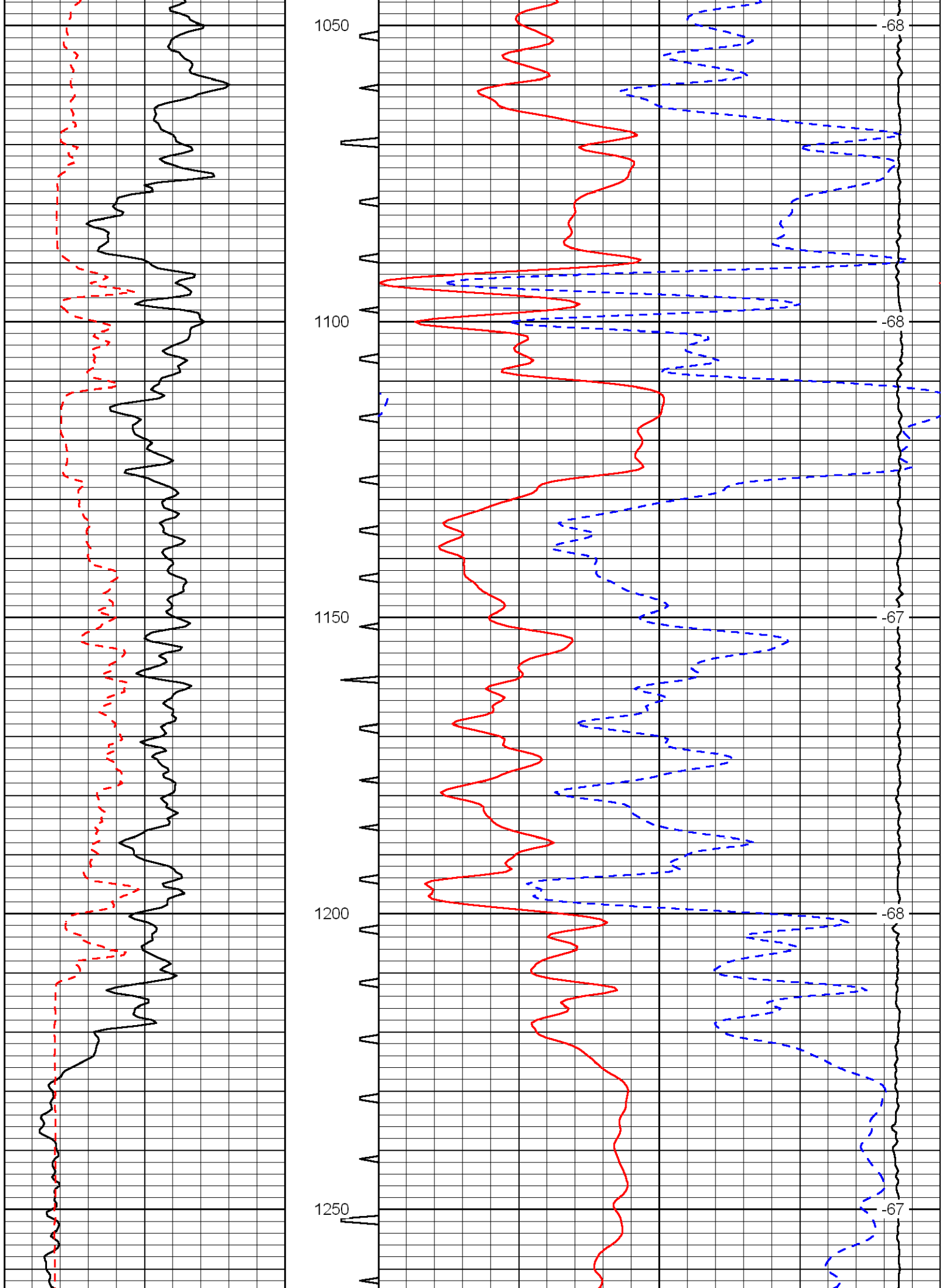
0	Gamma Ray	150	Sonic Int	140	Delta Time (usec/ft)	40
150	Gamma Ray	300	5	0	Sonic Porosity	-10
6	dCAL (GAPI)	16		15000	LTEN (lb)	0
						LSPD

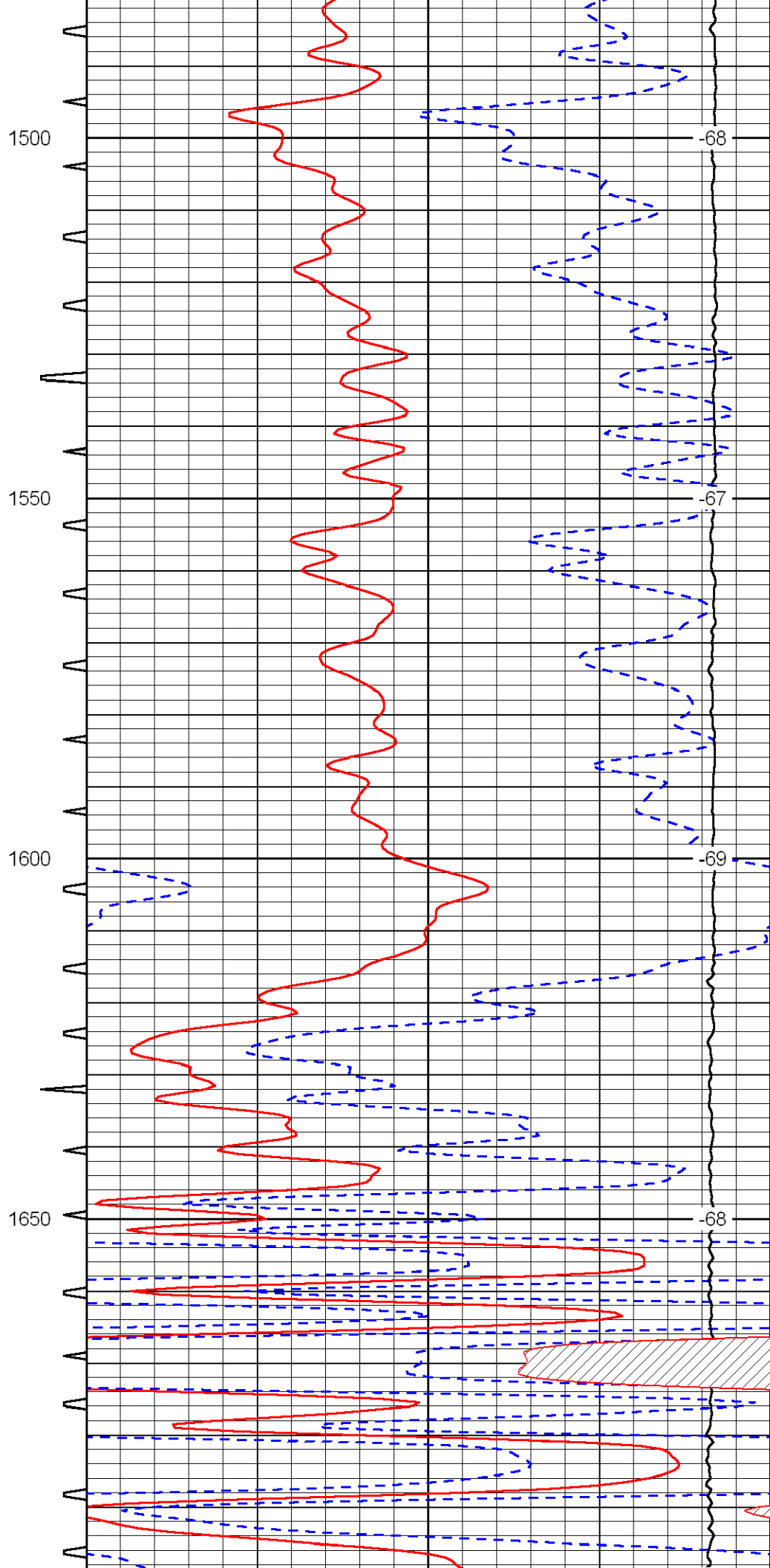
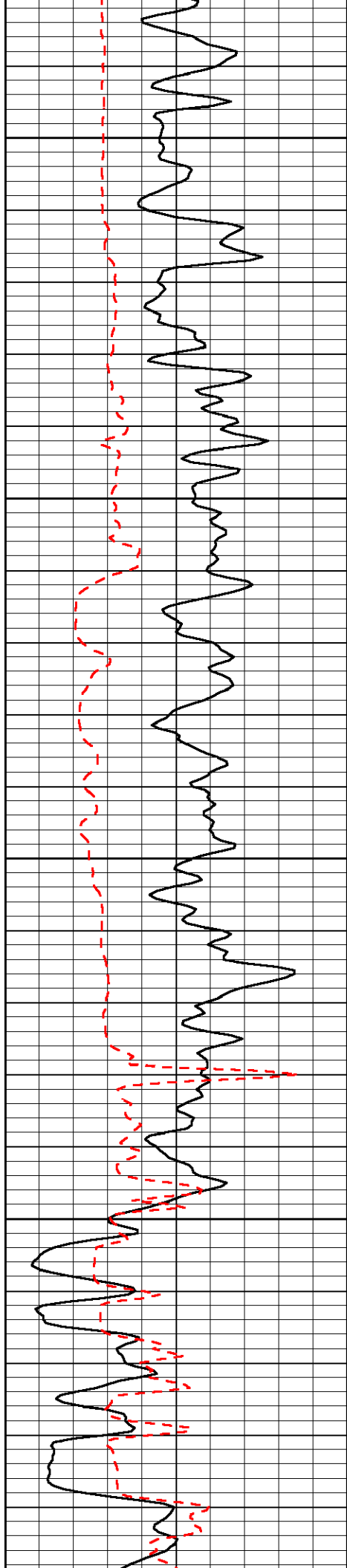


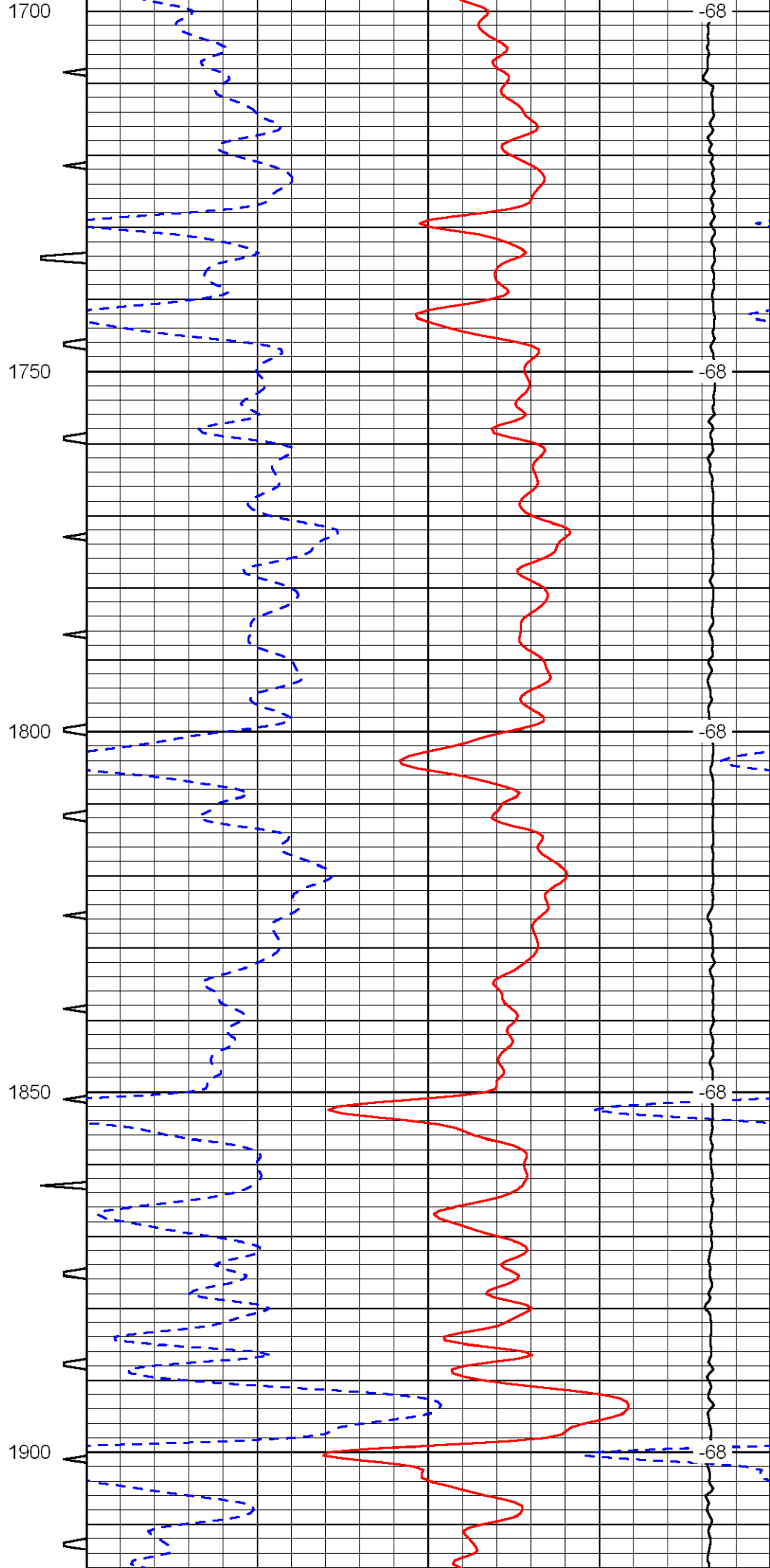
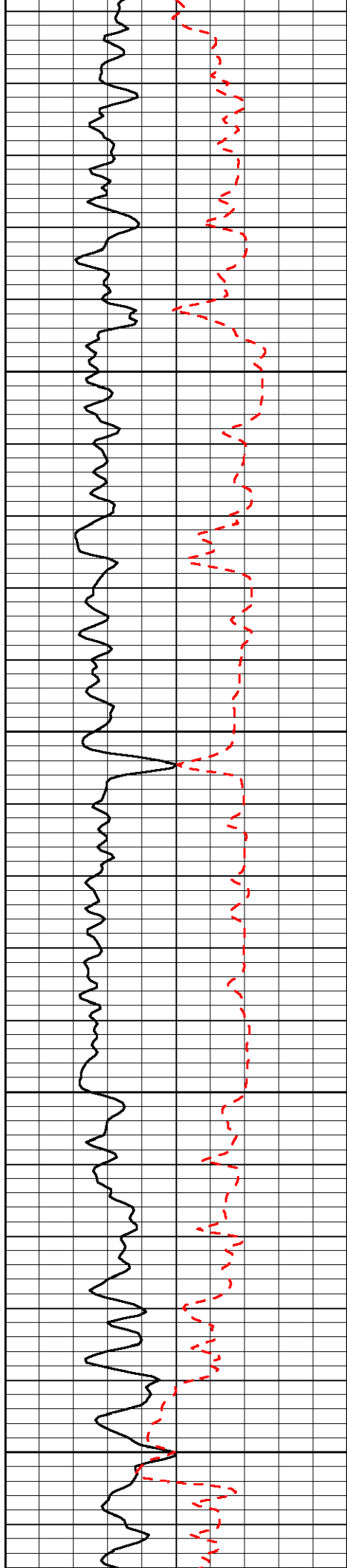


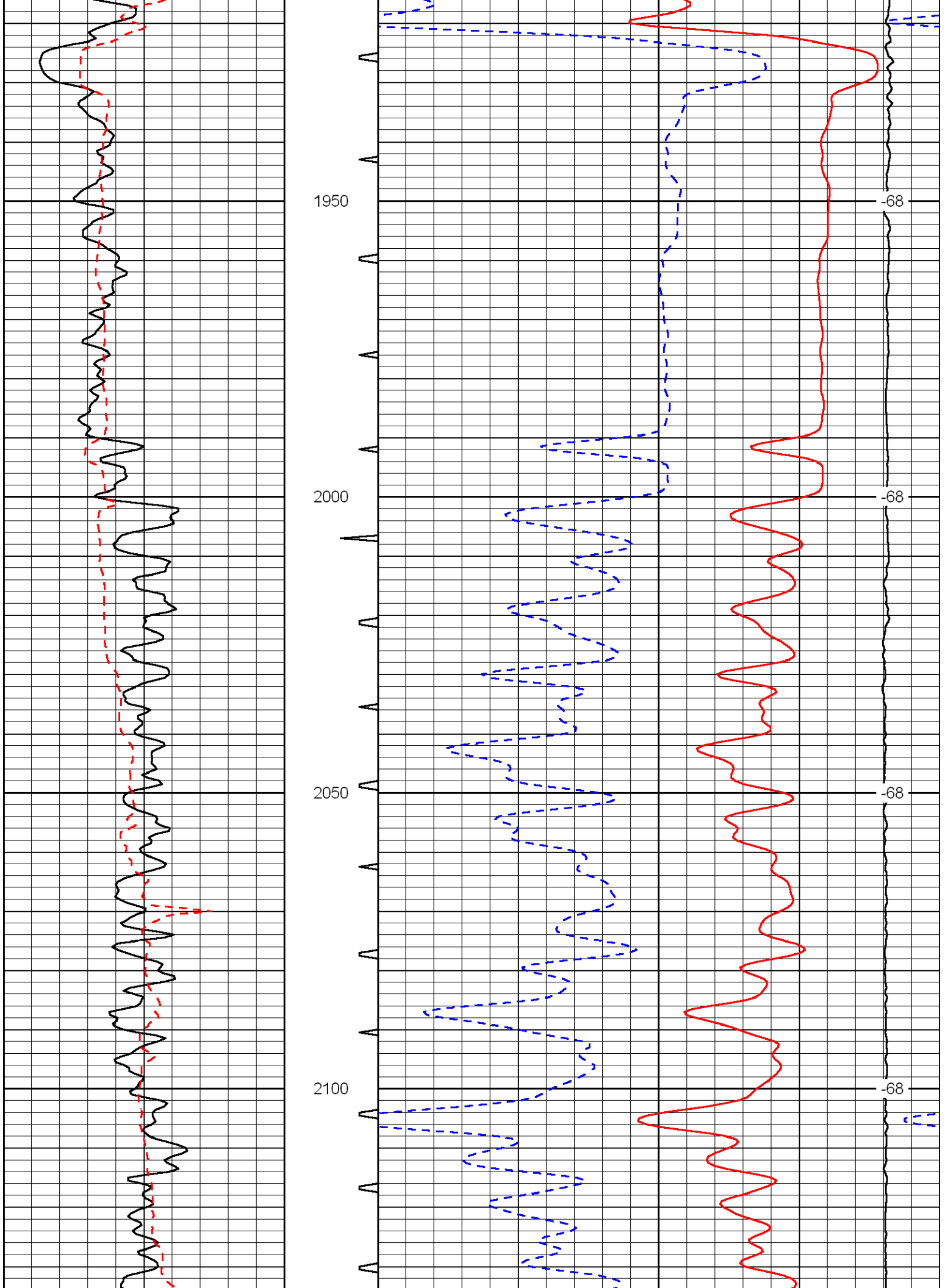


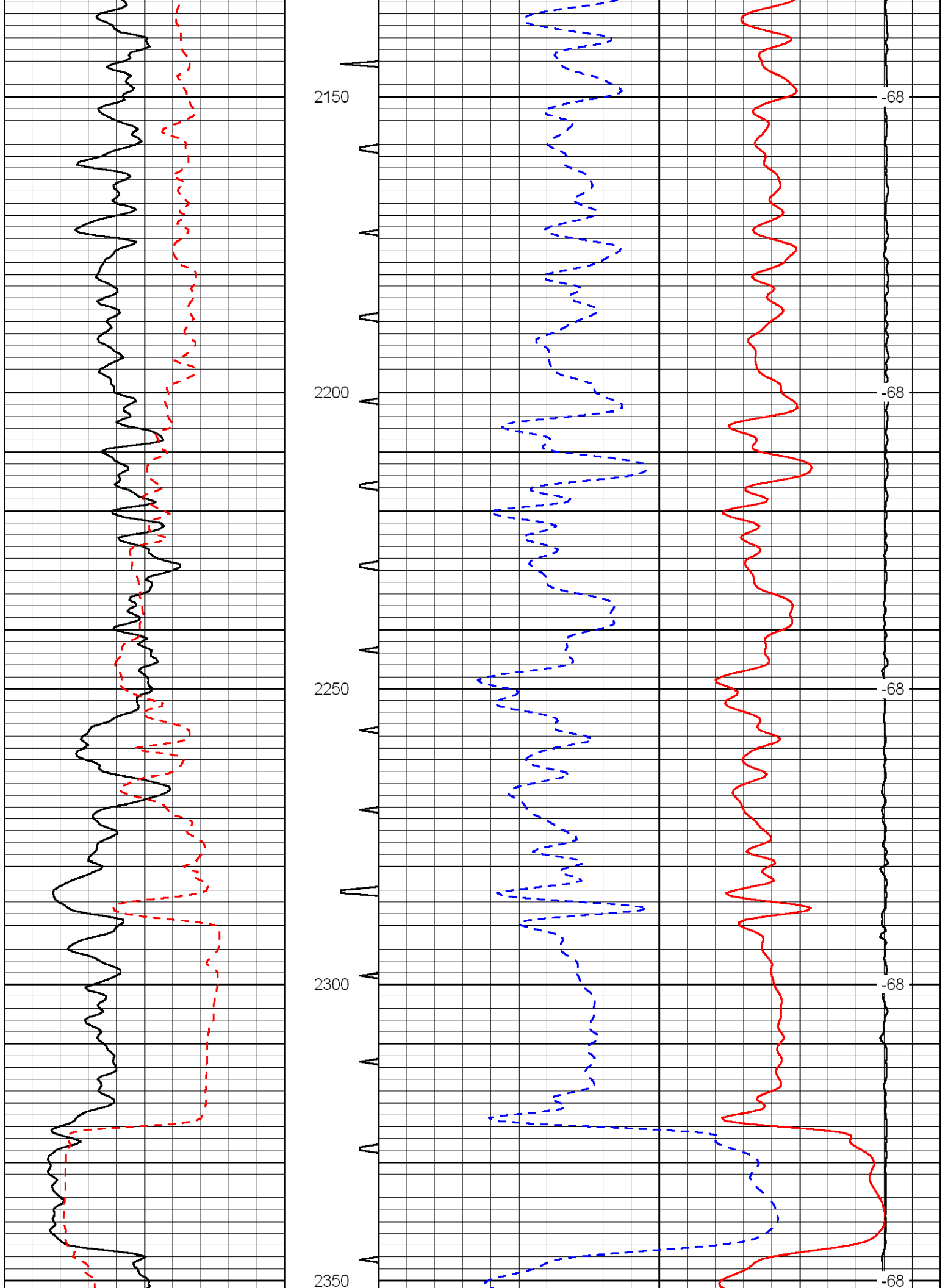


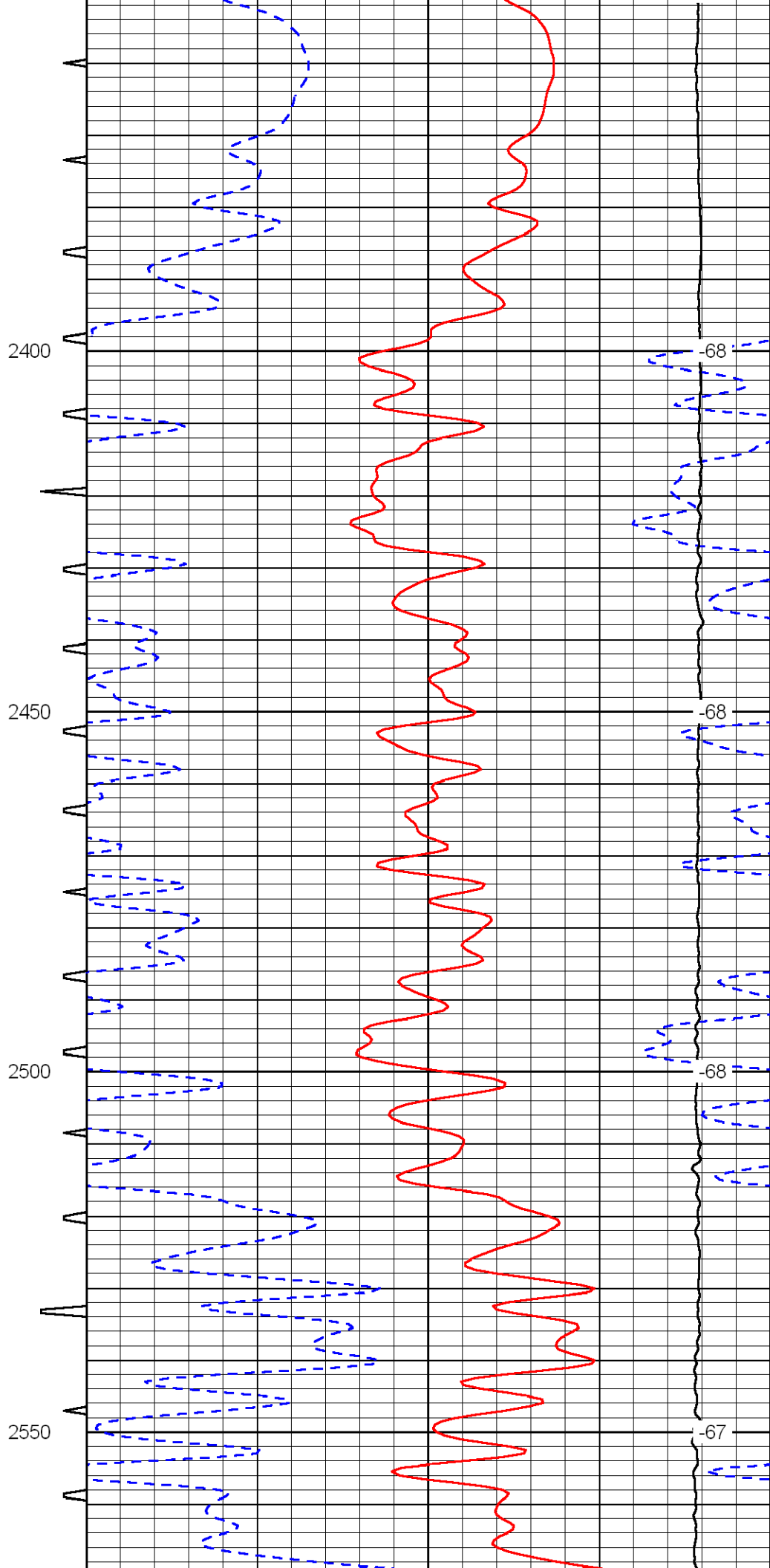
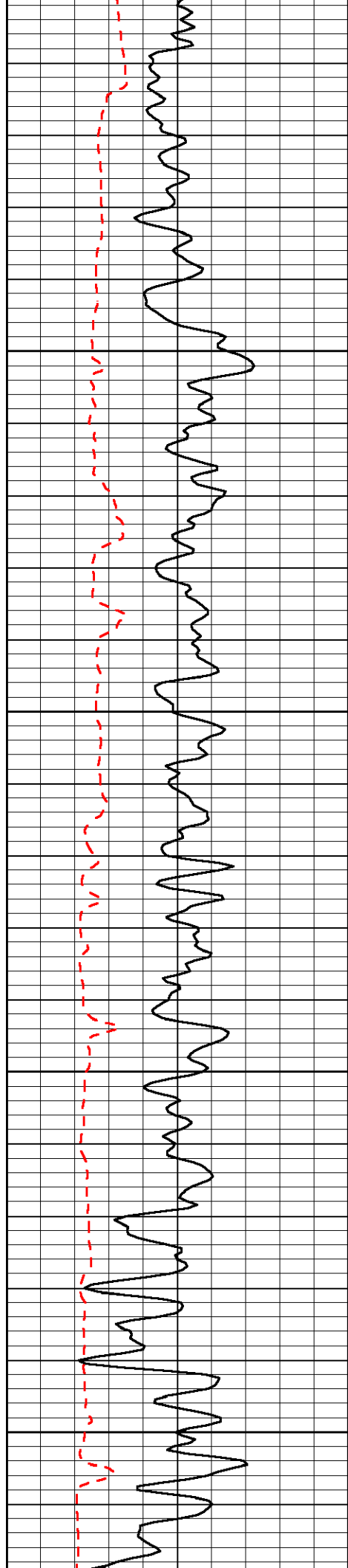


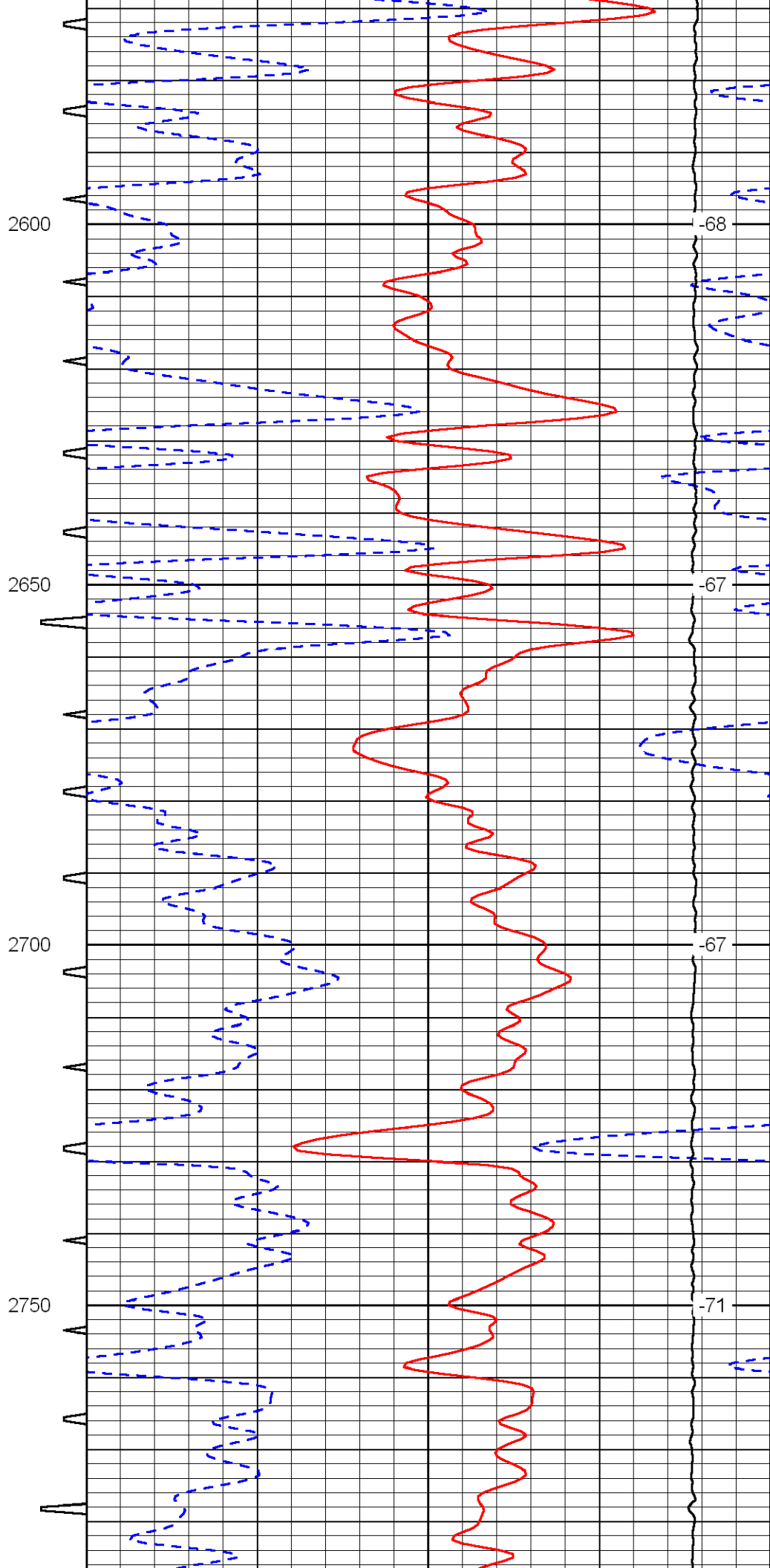
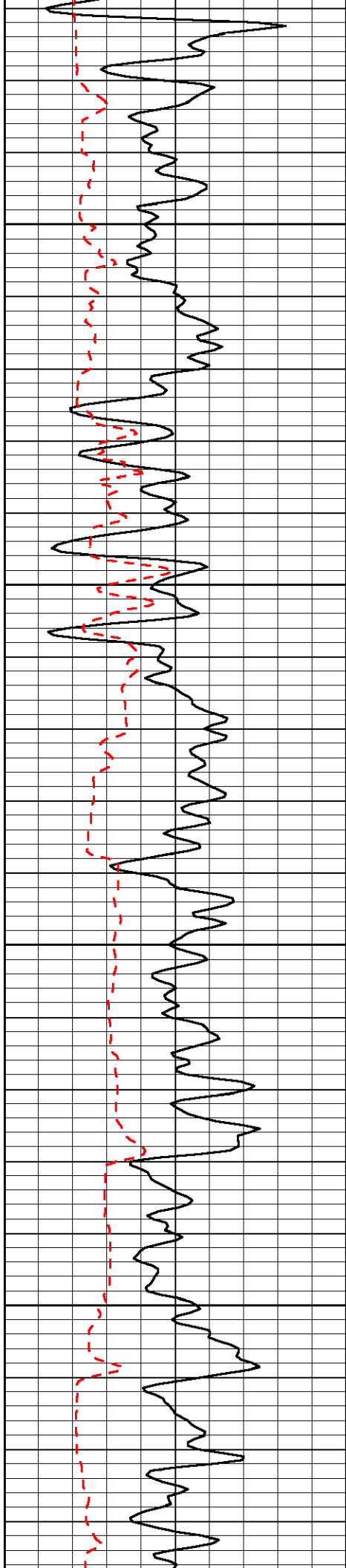


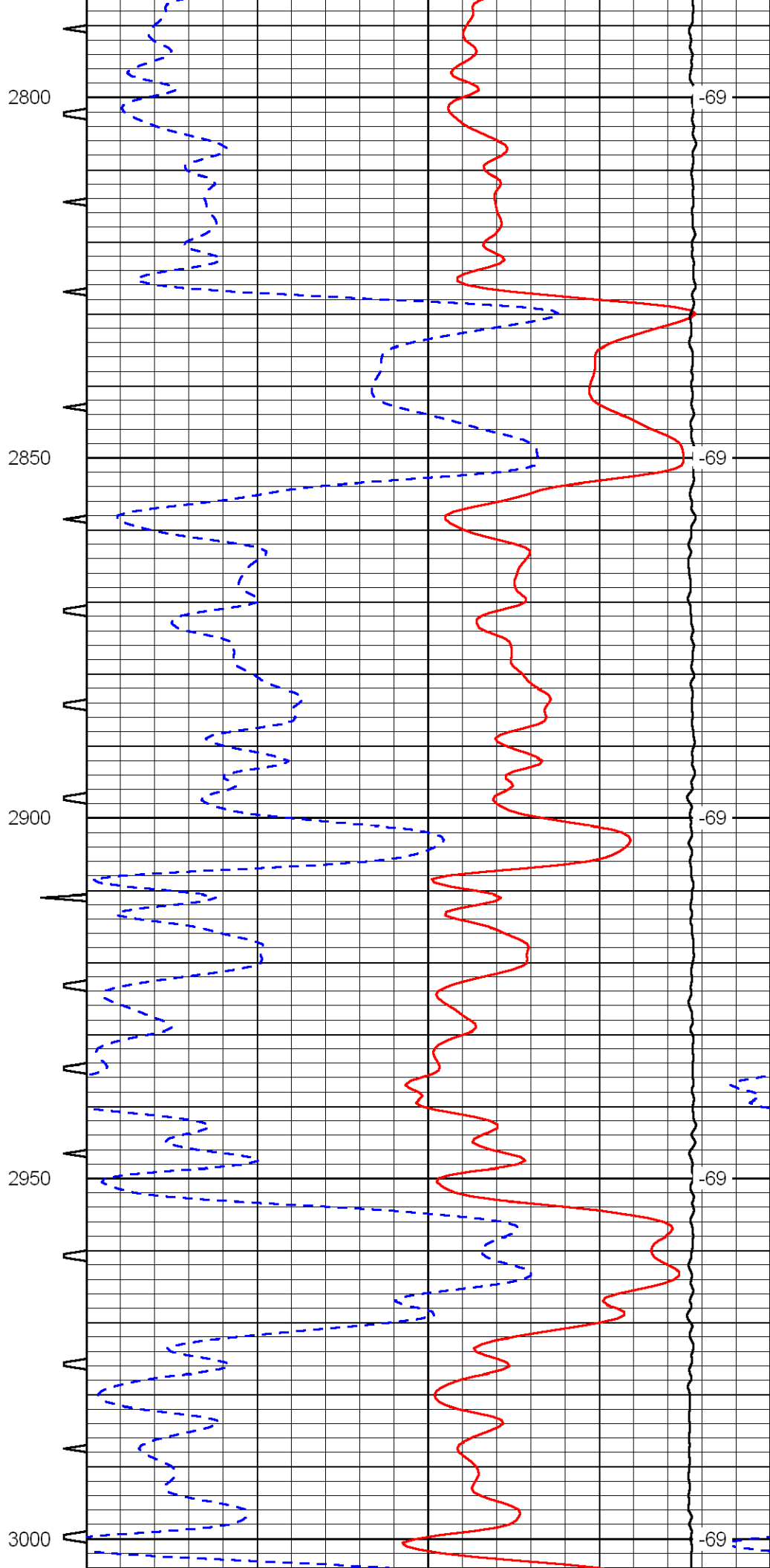
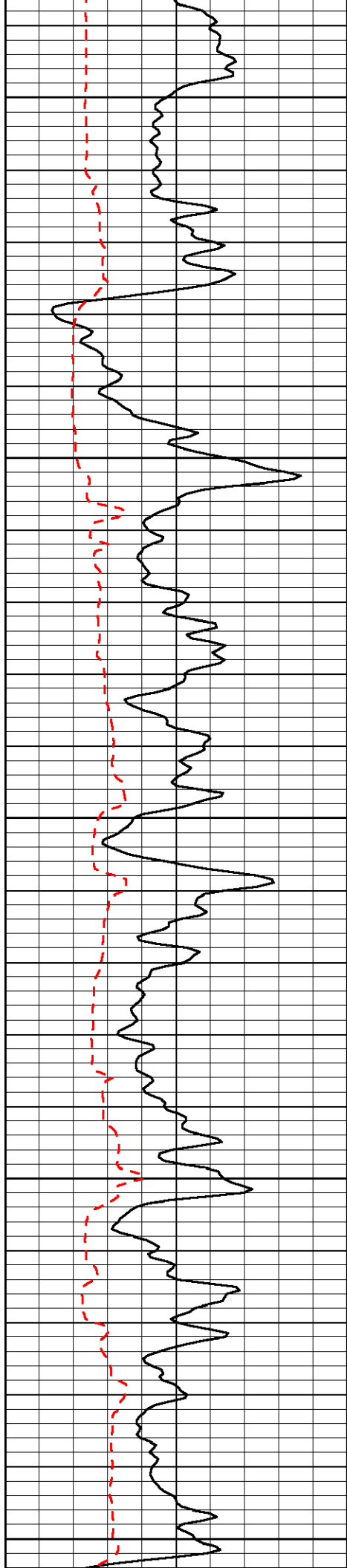


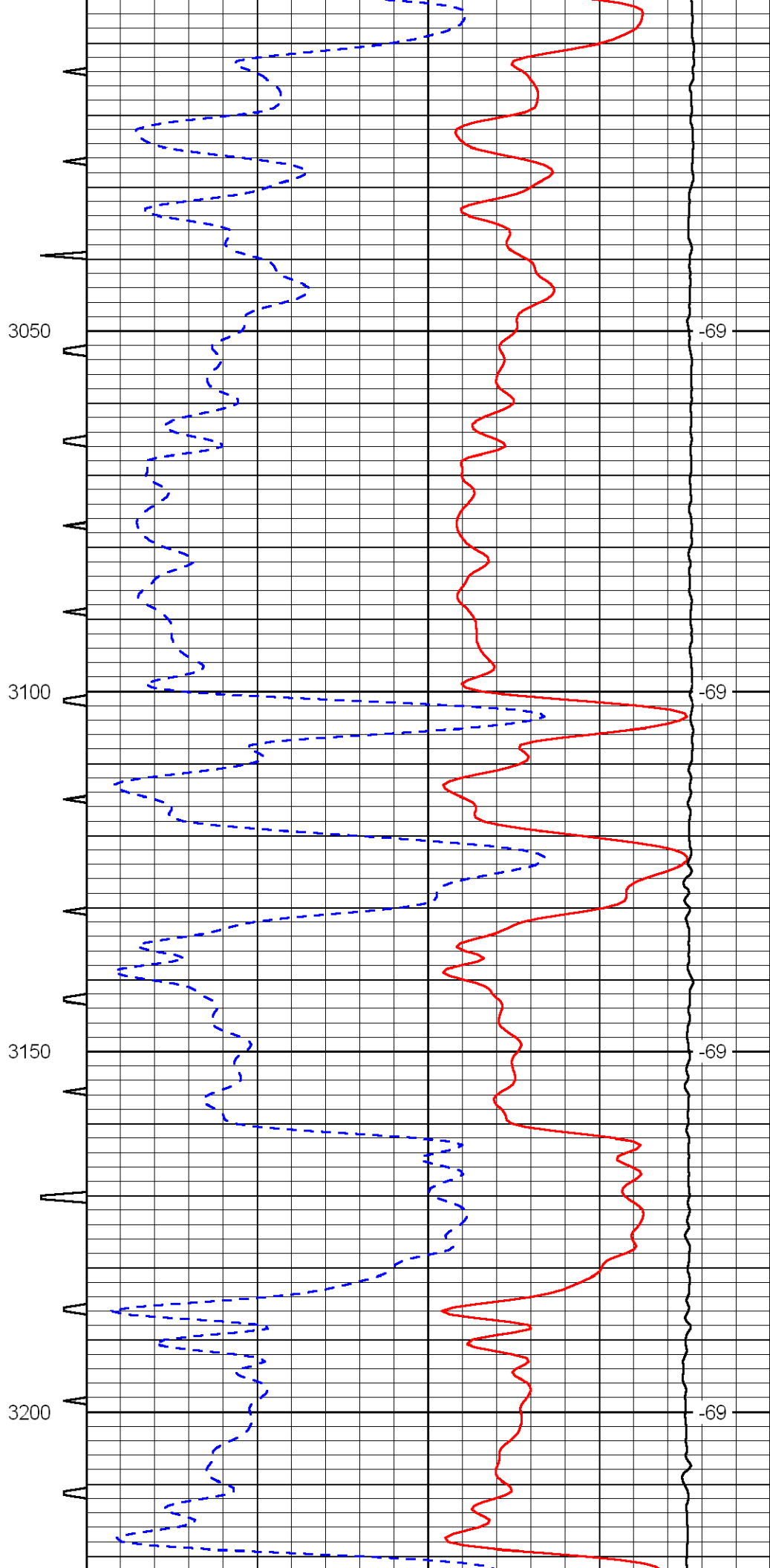
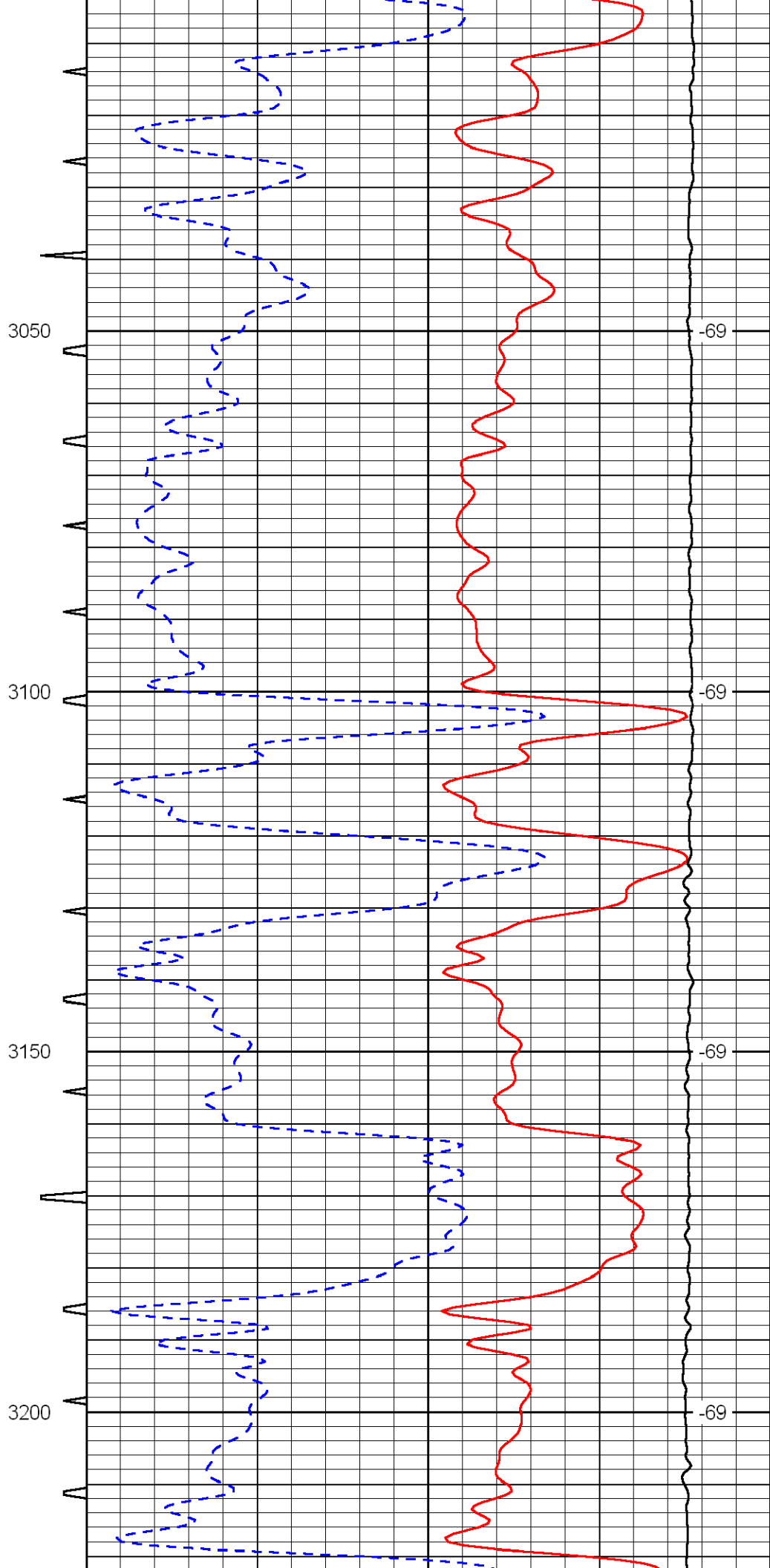
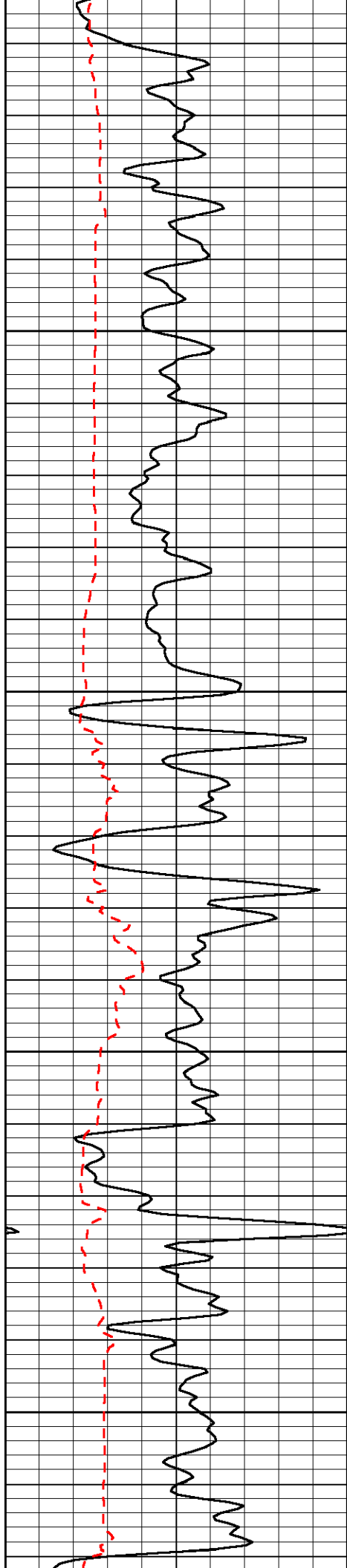


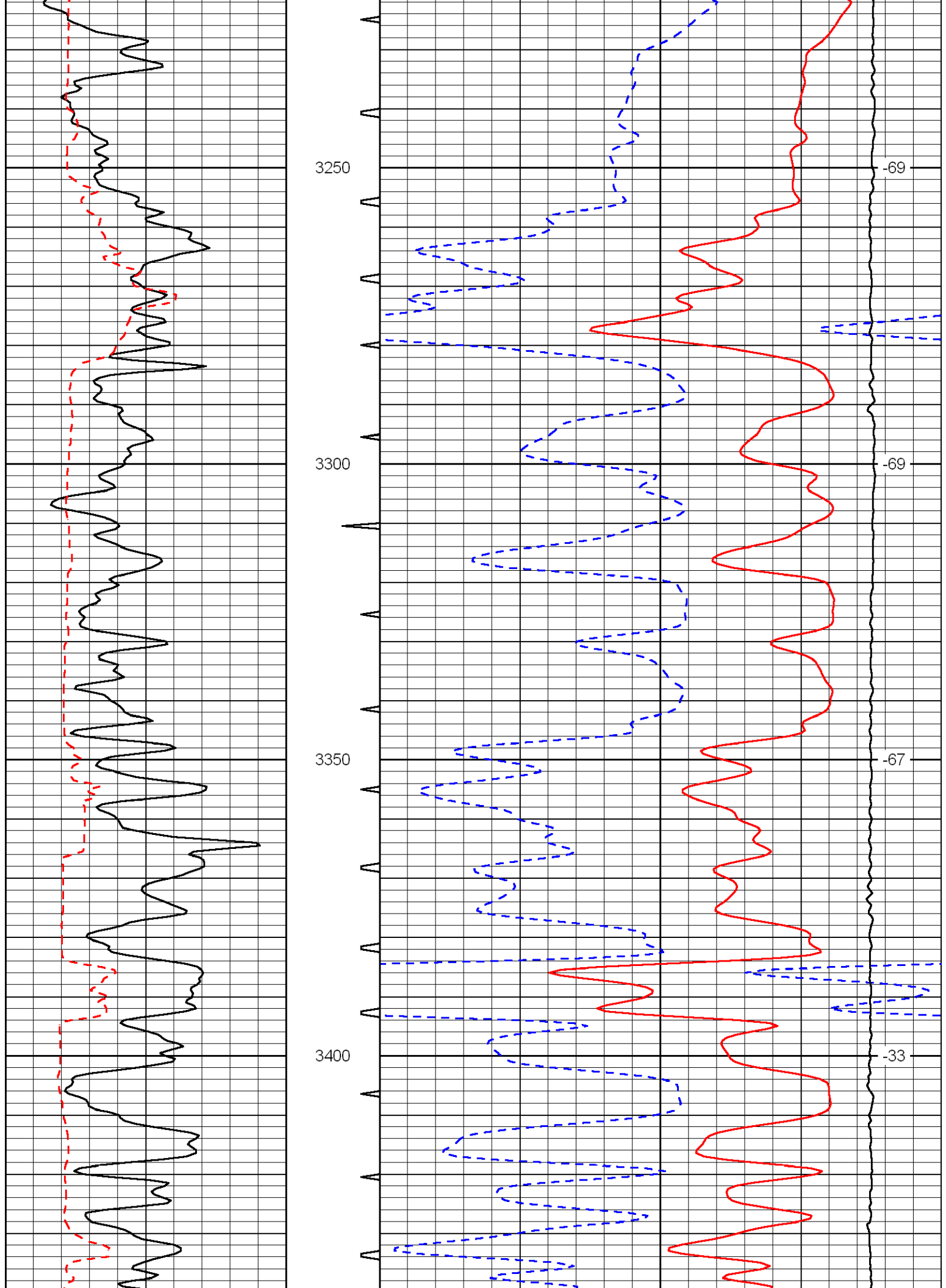


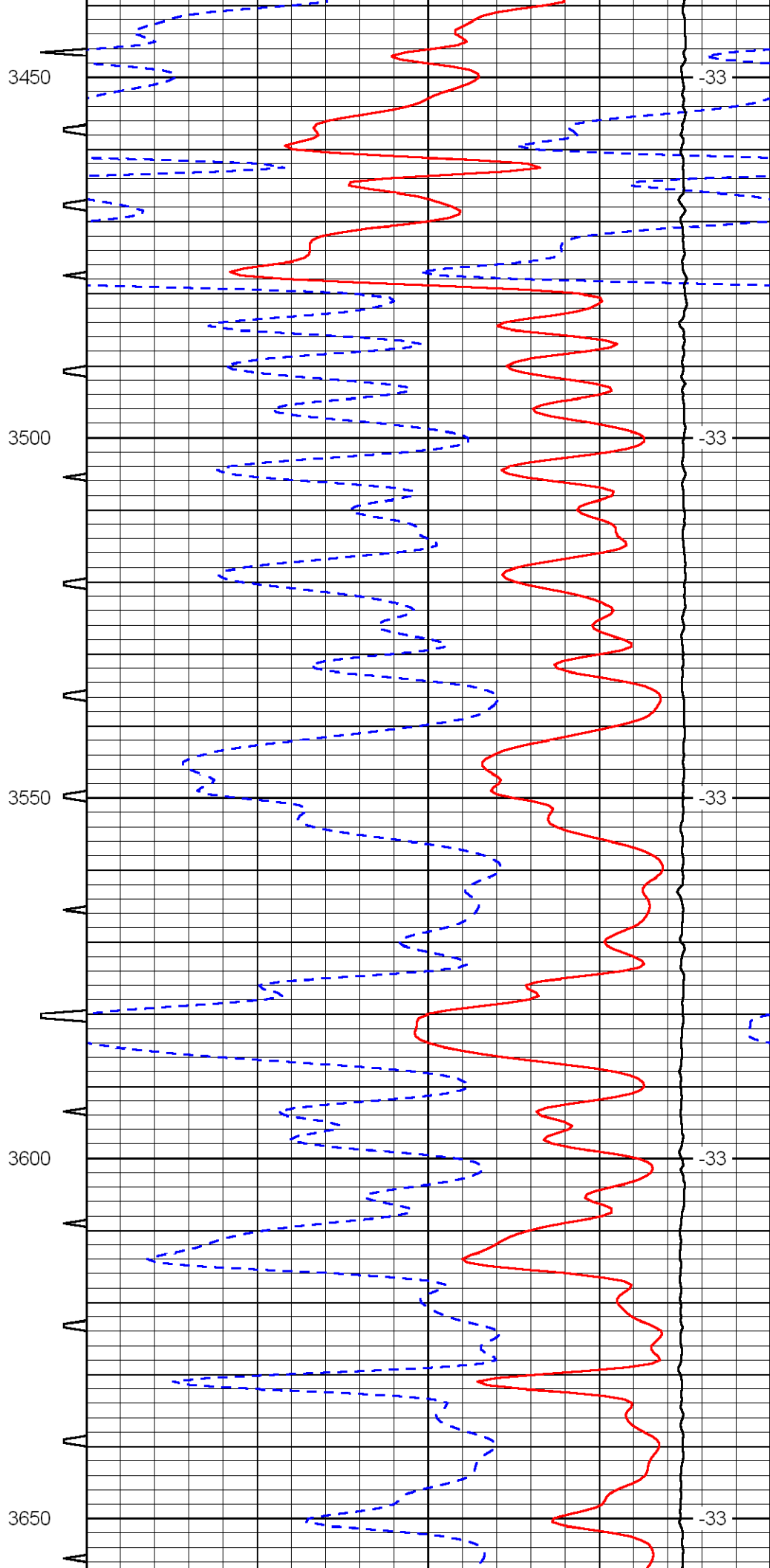
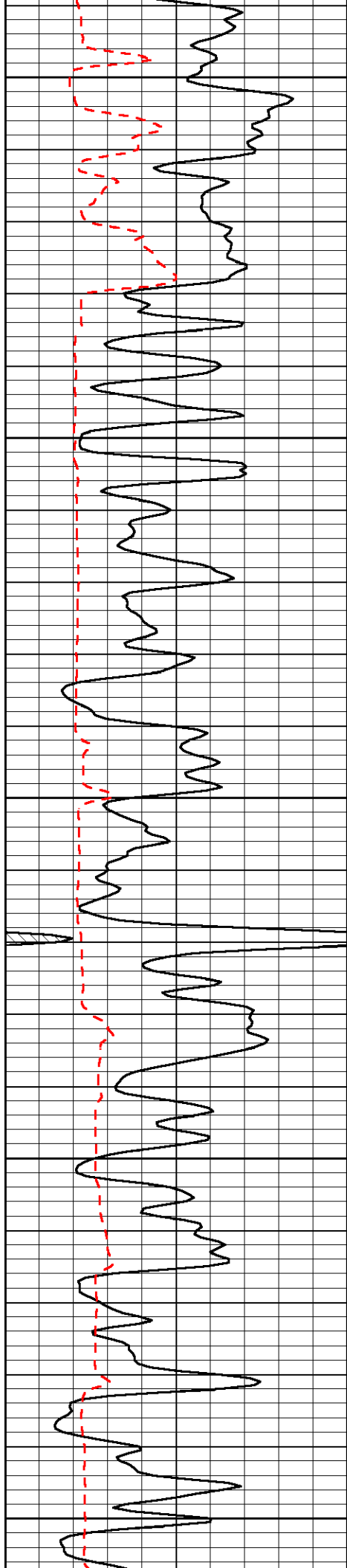


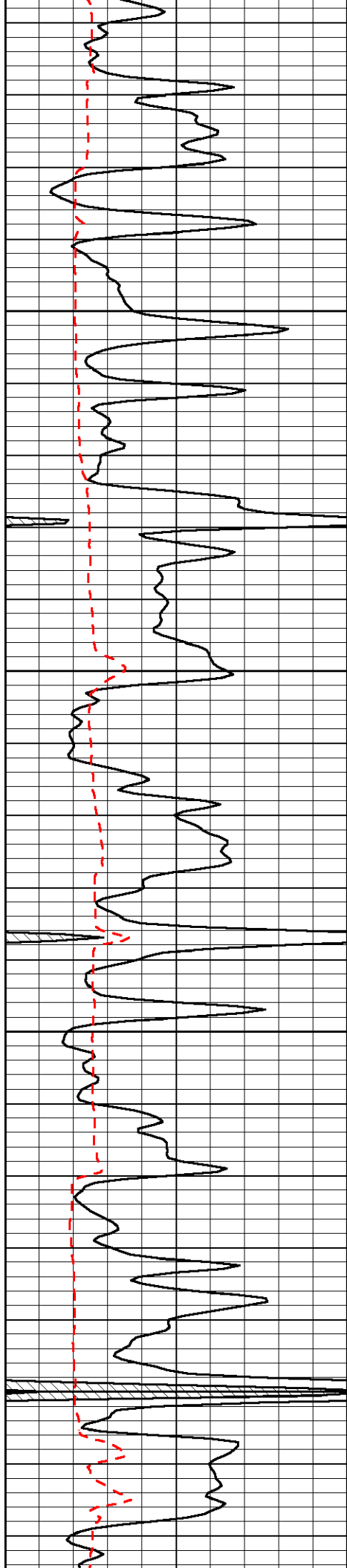










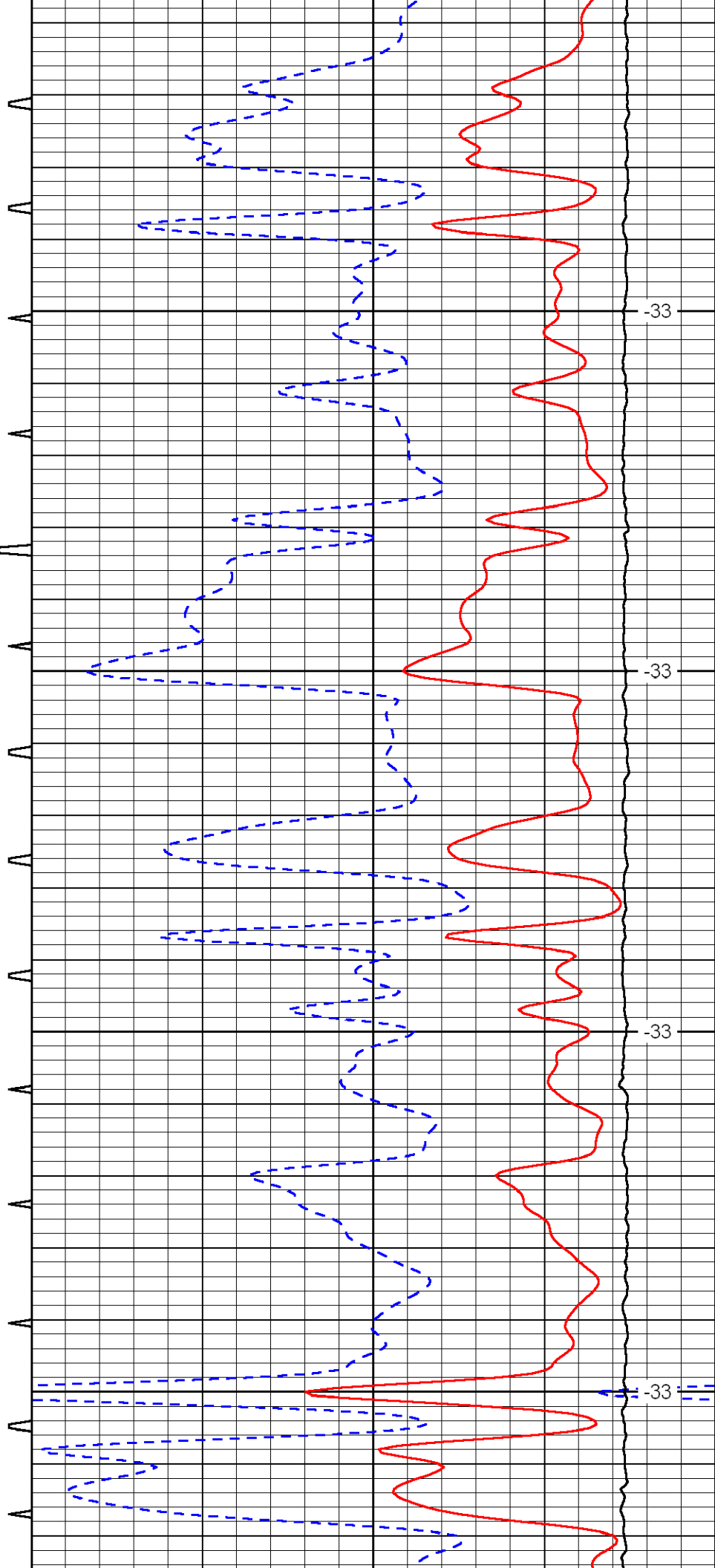


3700

3750

3800

3850

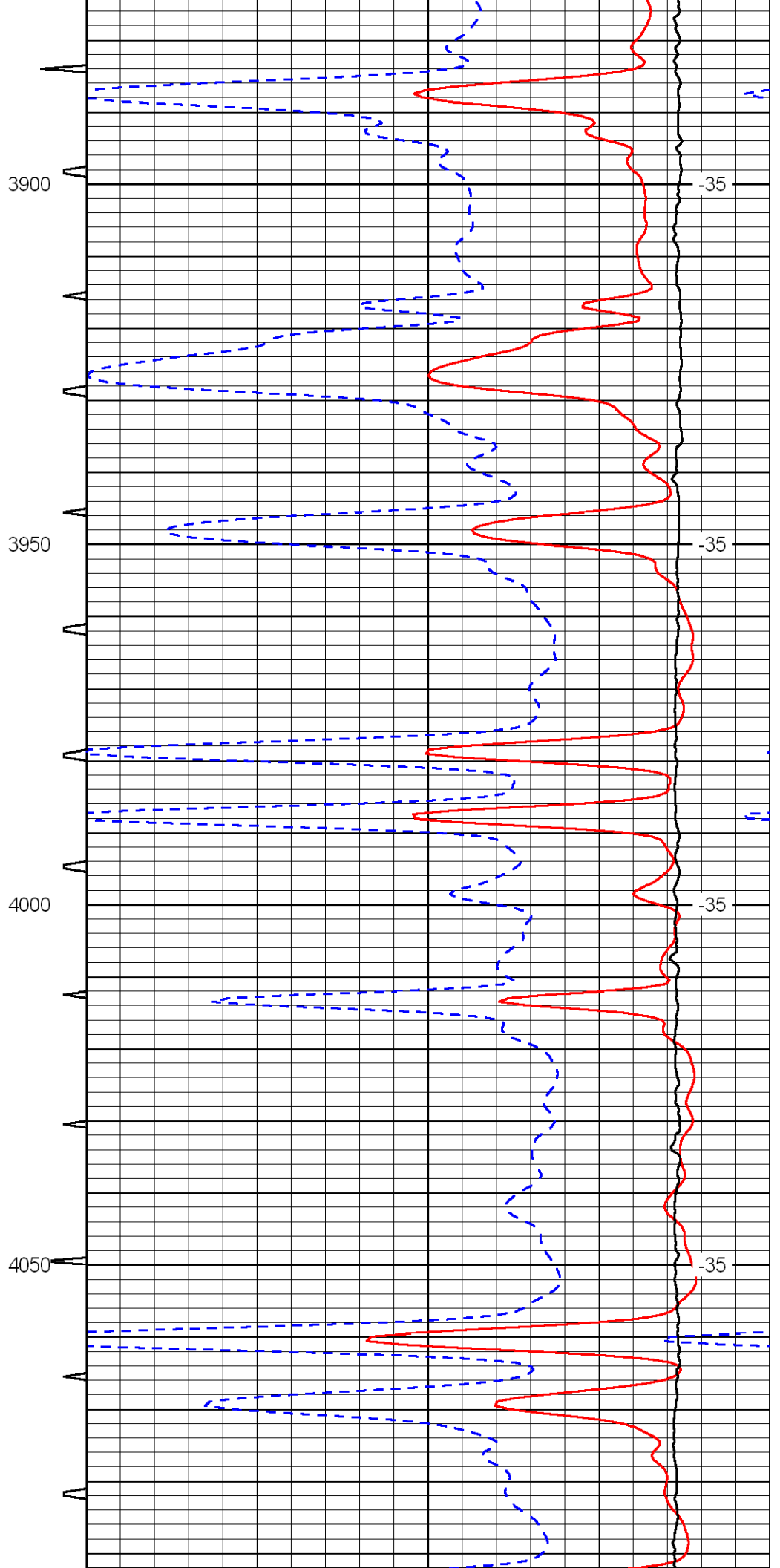
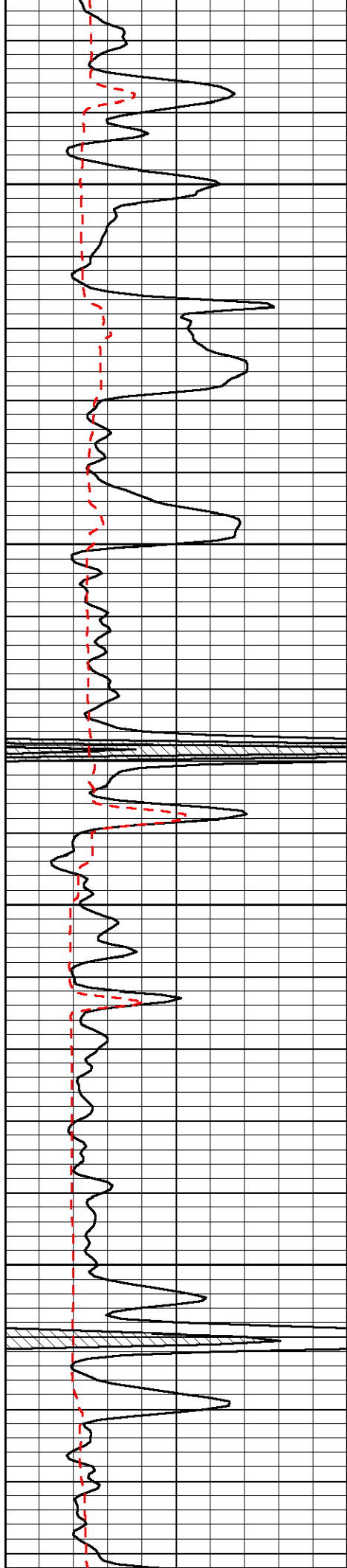


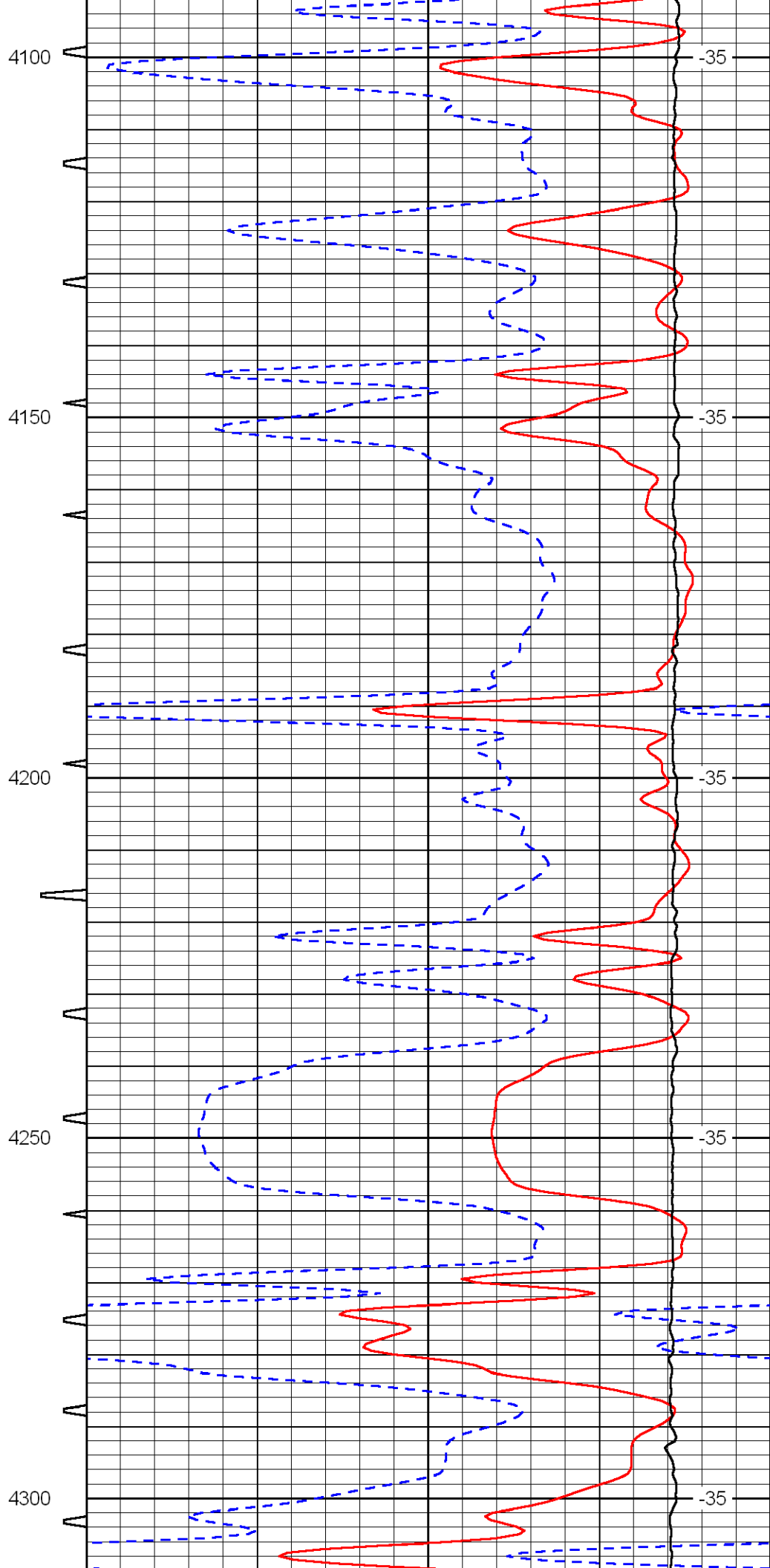
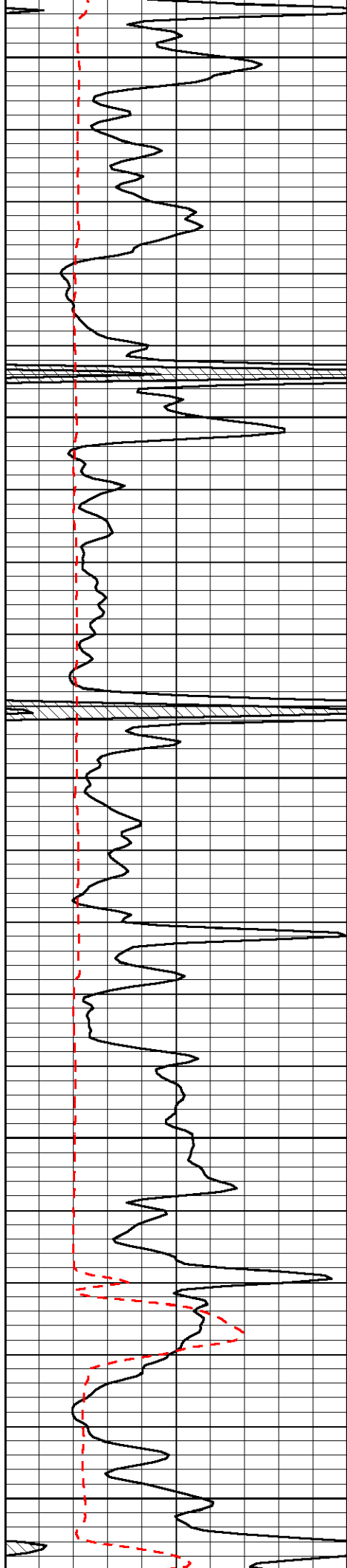
-33

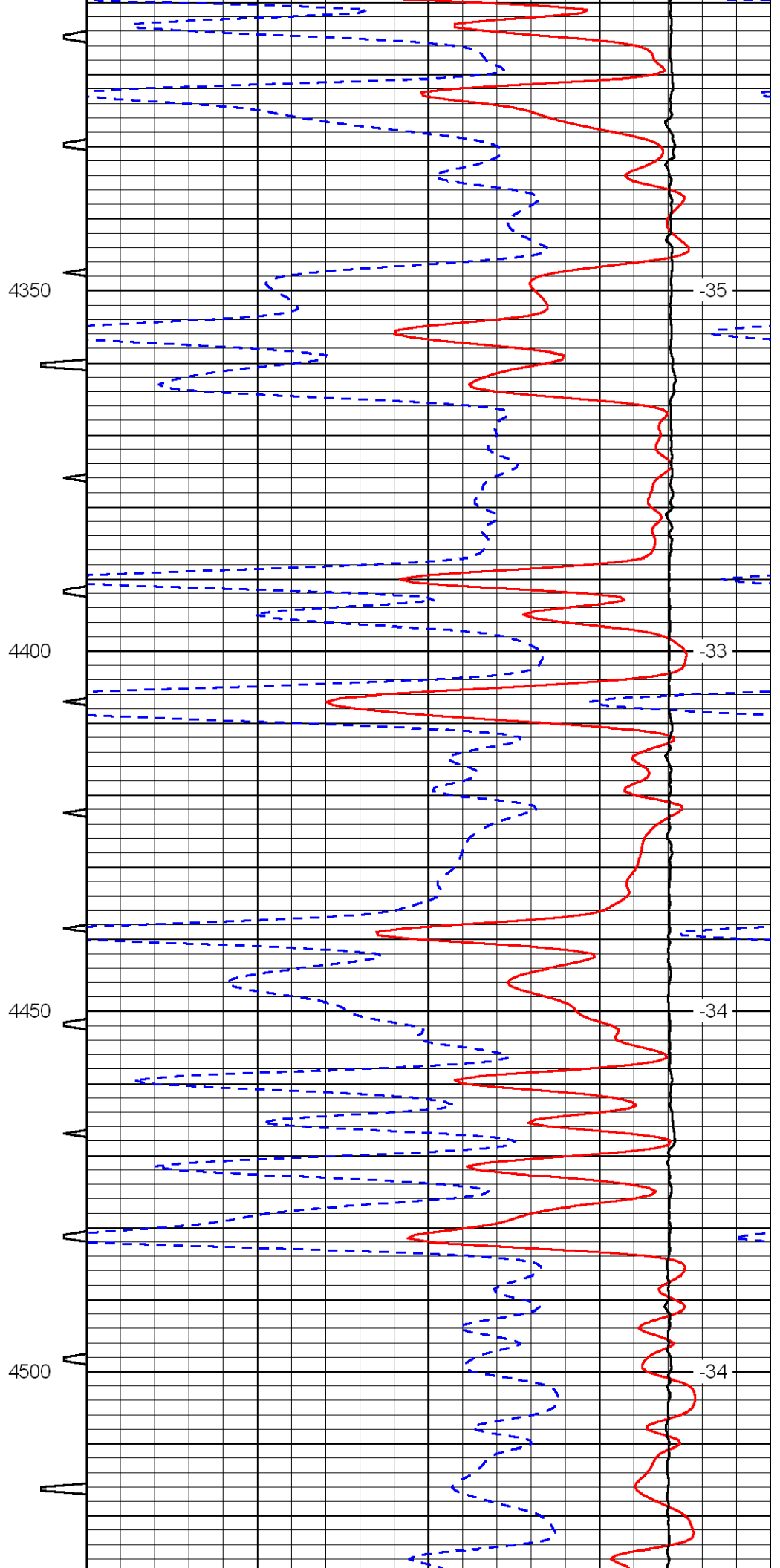
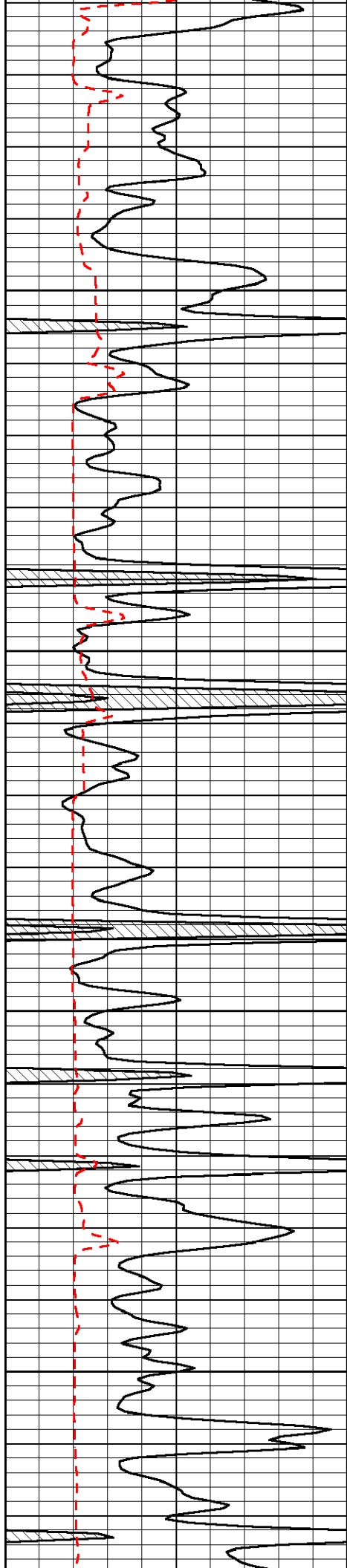
-33

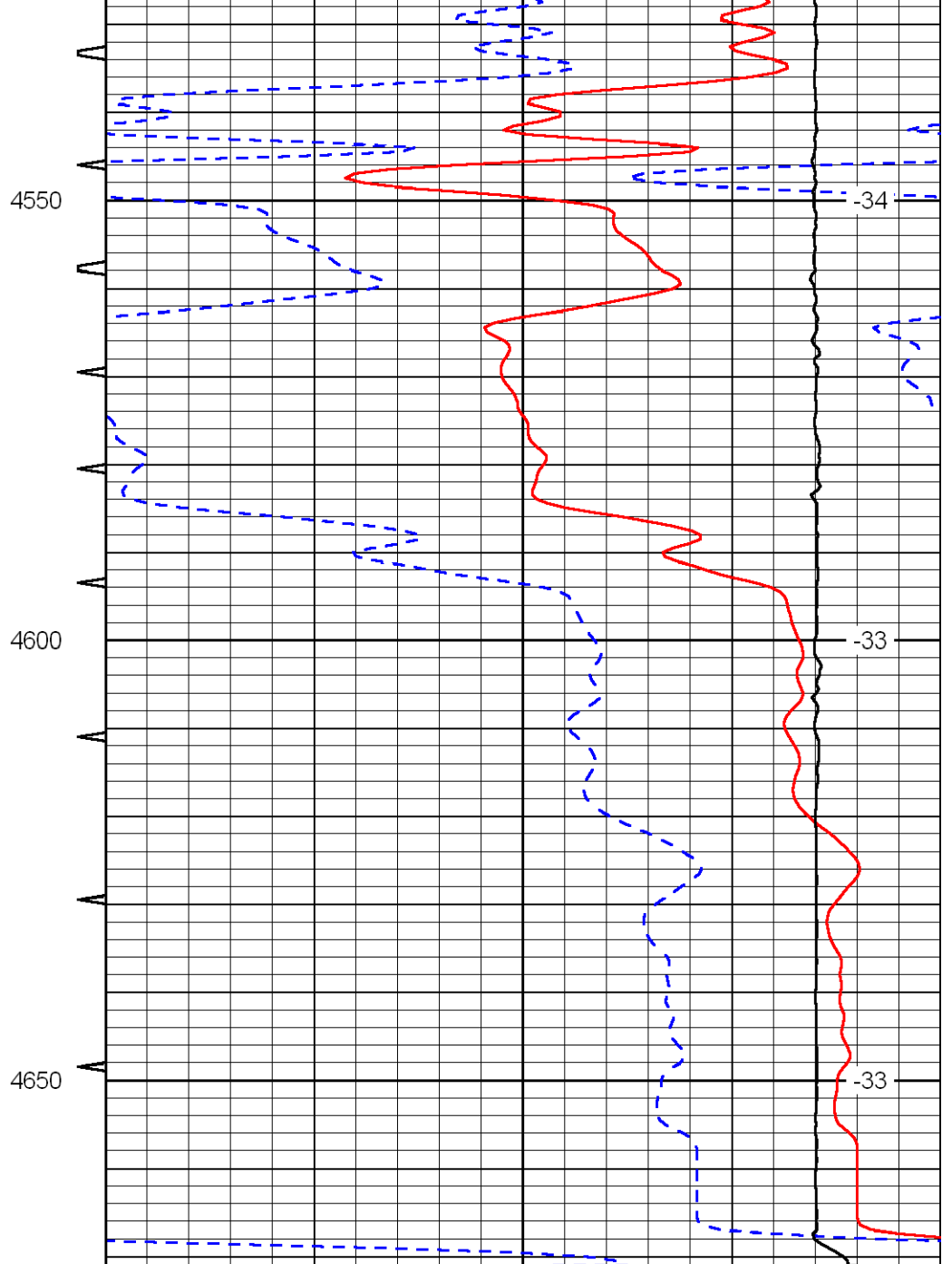
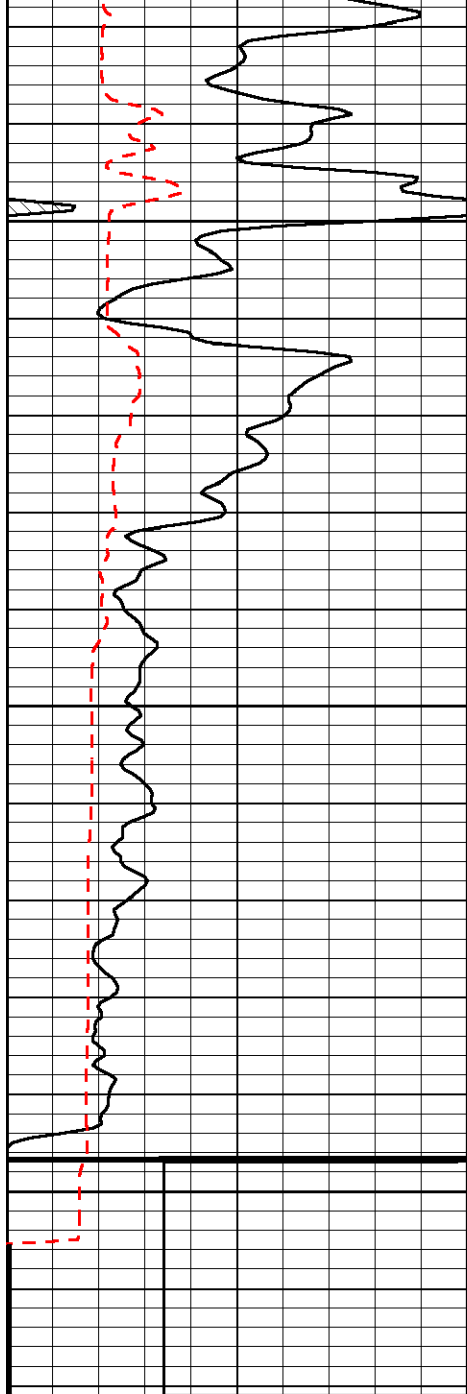
-33

-33









0	Gamma Ray	150	Sonic Int	140	Delta Time (usec/ft)	40
150	Gamma Ray	300	5	0	Sonic Porosity	-10
6	dCAL (GAPI)	16		15000	LTEN (lb)	0
LSPD						