



Green Country Wireline

GAMMA RAY  
CEMENT BOND LOG  
CCLV/DL

Company EXCEL OIL & GAS  
Well WINDERS # 15-18  
Field PERU-SEDAN  
County CHAUTAUQUA State KANSAS

Company EXCEL OIL & GAS  
Well WINDERS # 15-18  
Field PERU-SEDAN  
County CHAUTAUQUA  
State KANSAS

Location: API #: 15-019-2714  
SW SW NE NW  
4130' FSL & 3930' FEL  
SEC 15 TWP 34S RGE 12E  
Permanent Datum Elevation 776'  
Log Measured From KB DF  
Drilling Measured From GL 776'

Date	3-5-12						
Run Number	1						
Depth Driller	1010'						
Depth Logger	966'						
Bottom Logged Interval	965'						
Top Log Interval	SURFACE						
Open Hole Size	WATER						
Type Fluid	---						
Density / Viscosity	---						
Max. Recorded Temp.	---						
Estimated Cement Top	13'						
Time Well Ready	---						
Time Logger on Bottom	---						
Equipment Number	3						
Location	DEWEY						
Recorded By	HERREN						
Witnessed By	MR BUCK						
Run Number	Bit	From	To	Size	Weight	From	To
Borehole Record							
Casing Record	Size	Wgt/Ft	Top	Bottom			
Surface String	8.625"		SURFACE	40'			
Prot String							
Production String	4.5"		SURFACE	TD			
Liner							

<<< Fold Here >>>

All interpretations are opinions based on inferences from electrical or other measurements and we cannot and do not guarantee the accuracy or correctness of any interpretation, and we shall not, except in the case of gross or willful negligence on our part, be liable or responsible for any loss, costs, damages, or expenses incurred or sustained by anyone resulting from any interpretation made by any of our officers, agents or employees. These interpretations are also subject to our general terms and conditions set out in our current Price Schedule.

Comments

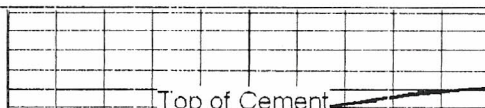


Green Country Wireline

GAMMA RAY CEMENT BOND

Database File: wind1518.db  
Dataset Pathname: wind1518/run1/pass1  
Presentation Format: cbl\_dr  
Dataset Creation: Mon Mar 05 10:29:24 2012 by Log Std Casedhole 09061  
Charted by: Depth in Feet scaled 1:240

9	Collar Locator	-1	-2	Amplitude (mV)	60	200	Variable Density	120
0	Gamma Ray (GAPI) (GAPI)	60	1000	Travel Time (usec)	350			



Top of Cement

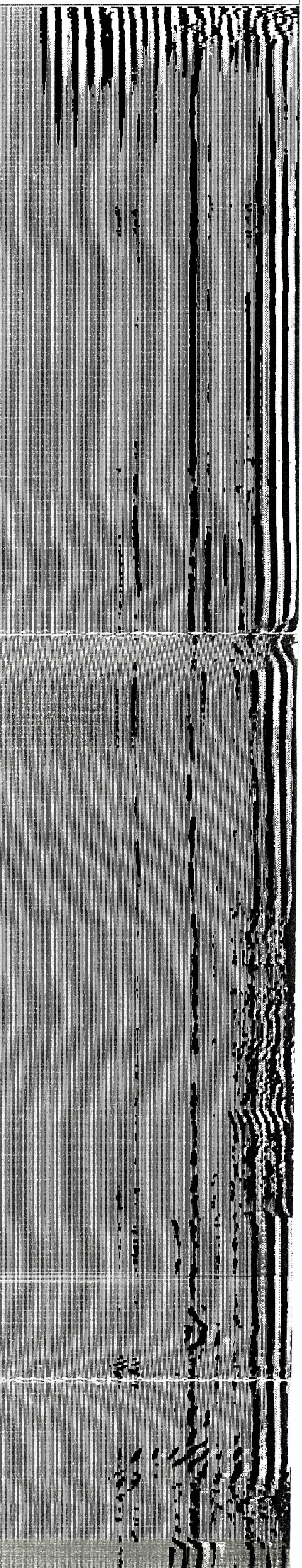
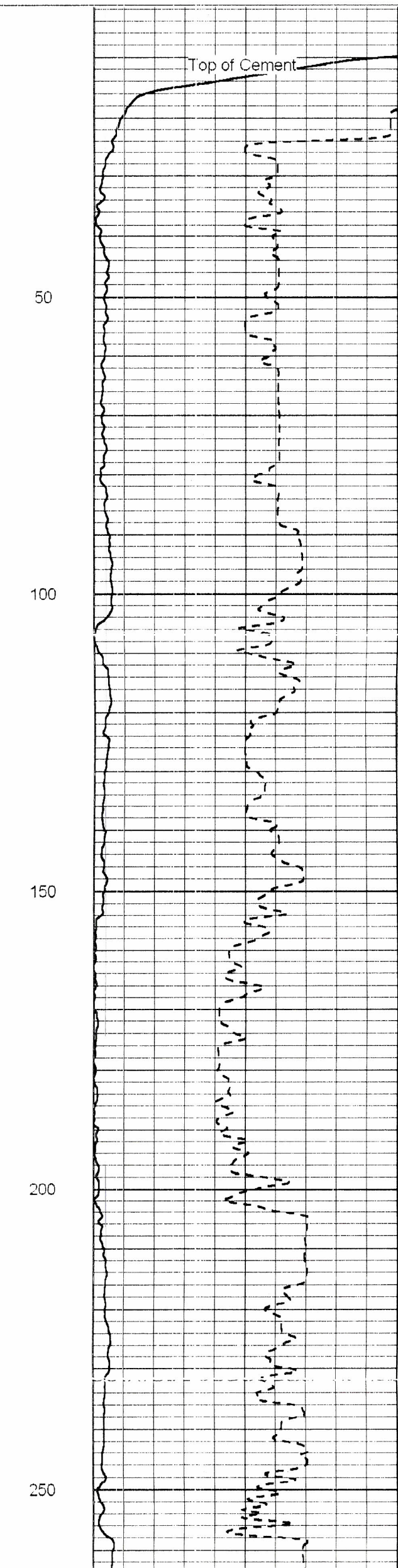
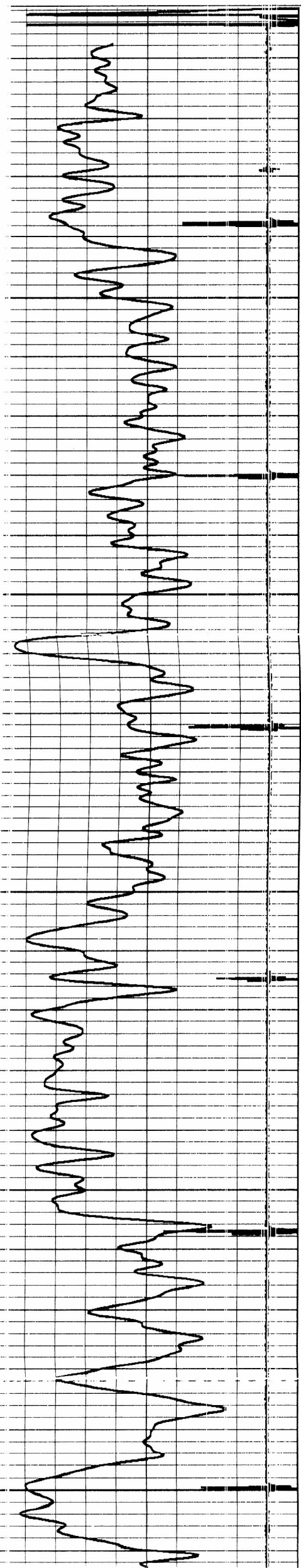
Collar Locator -1

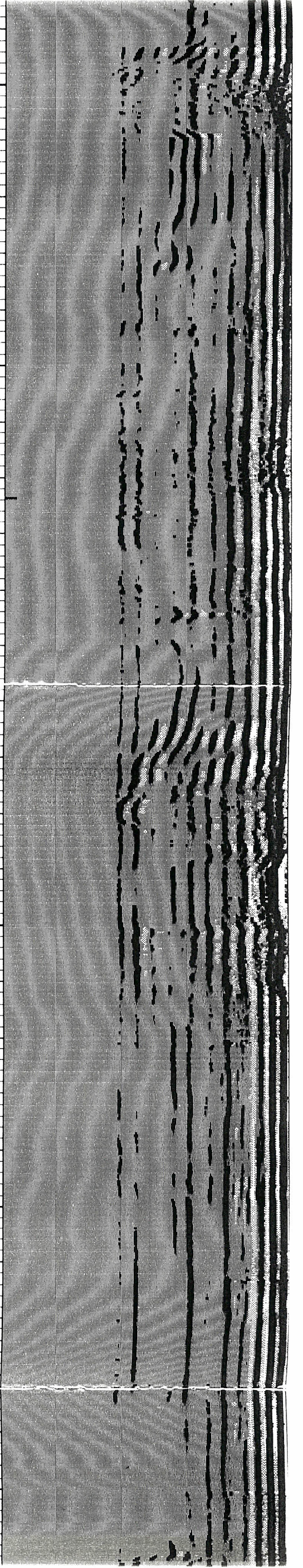
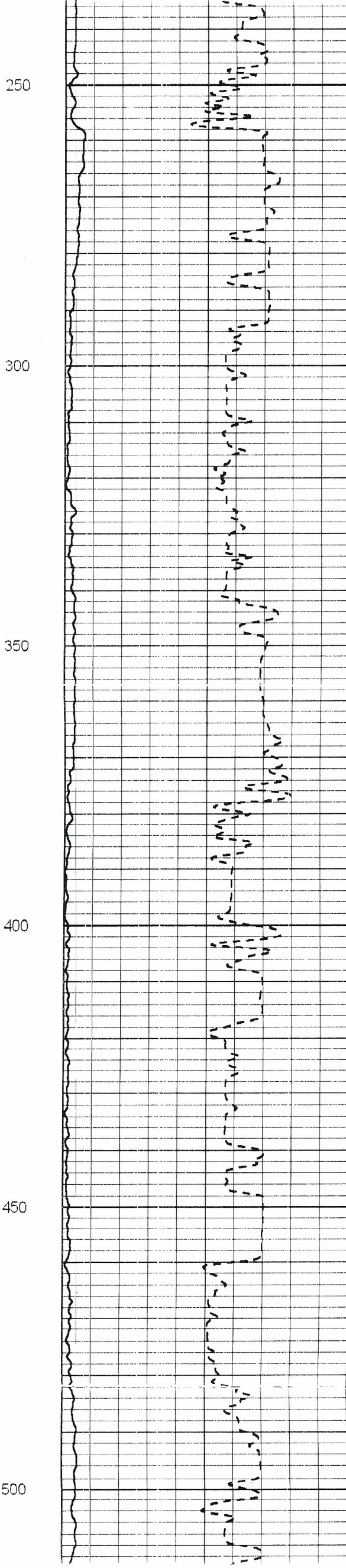
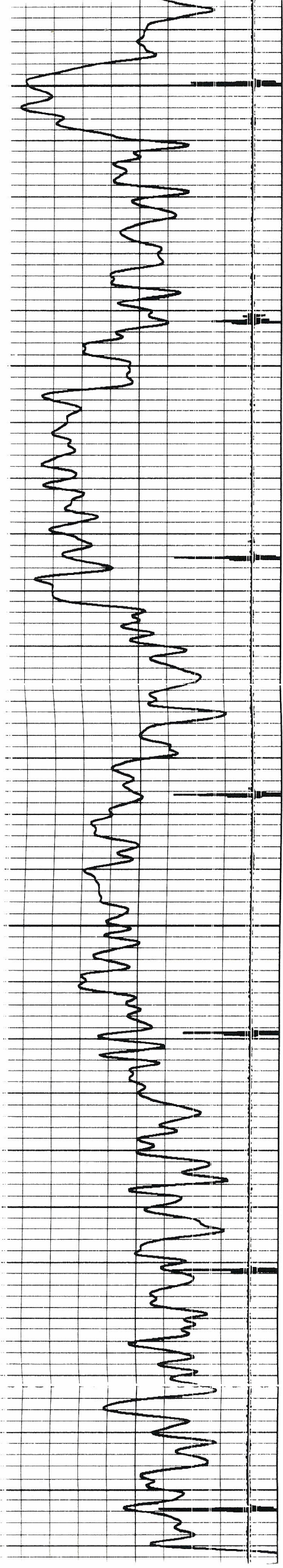
-2 Amplitude (mV) 60 200

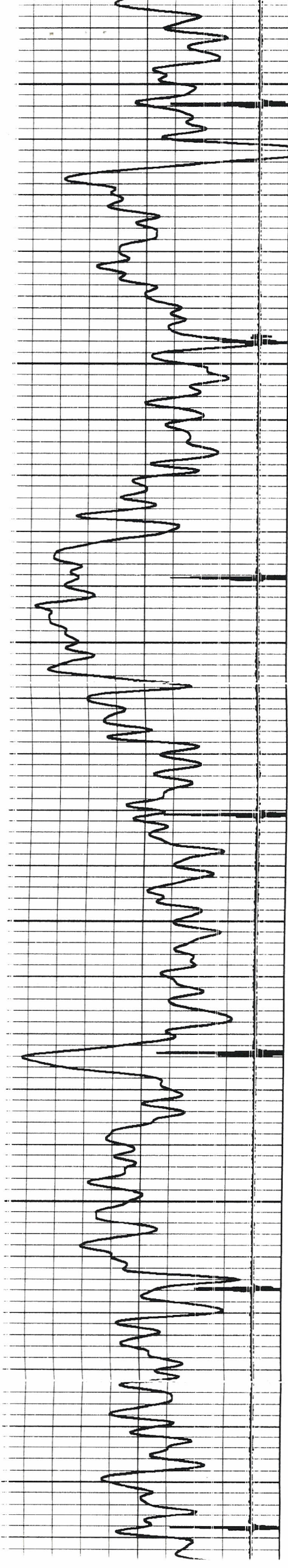
Variable Density 1200

Gamma Ray (GAPI) (GAPI) 60

1000 Travel Time (usec) 350







500  
550  
600  
650  
700  
750

