



SUPERIOR
Hays,
Kansas

**DUAL INDUCTION
LOG**

Company VINCENT OIL CORPORATION
Well ZIMMERMAN #1-8
Field WILDCAT
County FORD
State KANSAS

Company VINCENT OIL CORPORATION
Well ZIMMERMAN #1-8
Field WILDCAT
County FORD State KANSAS

Location: API #: 15-057-20778-0000
1880' FNL & 330' FWL
S/2 - NW - SW - NW
SEC 8 TWP 28S RGE 23W
Permanent Datum GROUND LEVEL Elevation 2512
Log Measured From KELLY BUSHING 10' A.G.L.
Drilling Measured From KELLY BUSHING
Other Services
CDL/CDL/PE
MEL/SONIC
Elevation
K.B. 2522
D.F. 2520
G.L. 2512

Date	1/23/12
Run Number	ONE
Depth Driller	5340
Depth Logger	5340
Bottom Logged Interval	5338
Top Log Interval	00
Casing Driller	8 5/8"@608'
Casing Logger	608
Bit Size	7 7/8"
Type Fluid in Hole	CHEMICAL MUD
Density / Viscosity	8.8/5.1
pH / Fluid Loss	9.5/7.2
Source of Sample	FLOWLINE
Rm @ Meas. Temp	.420@86F
Rmt @ Meas. Temp	.315@86F
Rmc @ Meas. Temp	.504@86F
Source of Rmf / Rmc	MEASUREMENT
Rm @ BHT	.282@128F
Time Circulation Stopped	3 HOURS
Time Logger on Bottom	1:30 P.M.
Maximum Recorded Temperature	128F
Equipment Number	4010
Location	HAYS, KANSAS
Recorded By	JEFF LUEBBERS
Witnessed By	JIM HALL

<<< Fold Here >>>

All interpretations are opinions based on inferences from electrical or other measurements and we cannot and do not guarantee the accuracy or correctness of any interpretation, and we shall not, except in the case of gross or willful negligence on our part, be liable or responsible for any loss, costs, damages, or expenses incurred or sustained by anyone resulting from any interpretation made by any of our officers, agents or employees. These interpretations are also subject to our general terms and conditions set out in our current Price Schedule.

Comments

THANK YOU FOR USING SUPERIOR WELL SERVICE HAYS, KANSAS (785) 628-6395
DIRECTIONS
FORD, KS. N. ON HWY 400 TO "SADDLE RD.", 5W. TO "RD. 120", 1S., 1W., 1/2 S. INTO ACROSS FROM
ABANDONED FARM



SUPERIOR
Hays,
Kansas

MAIN SECTION

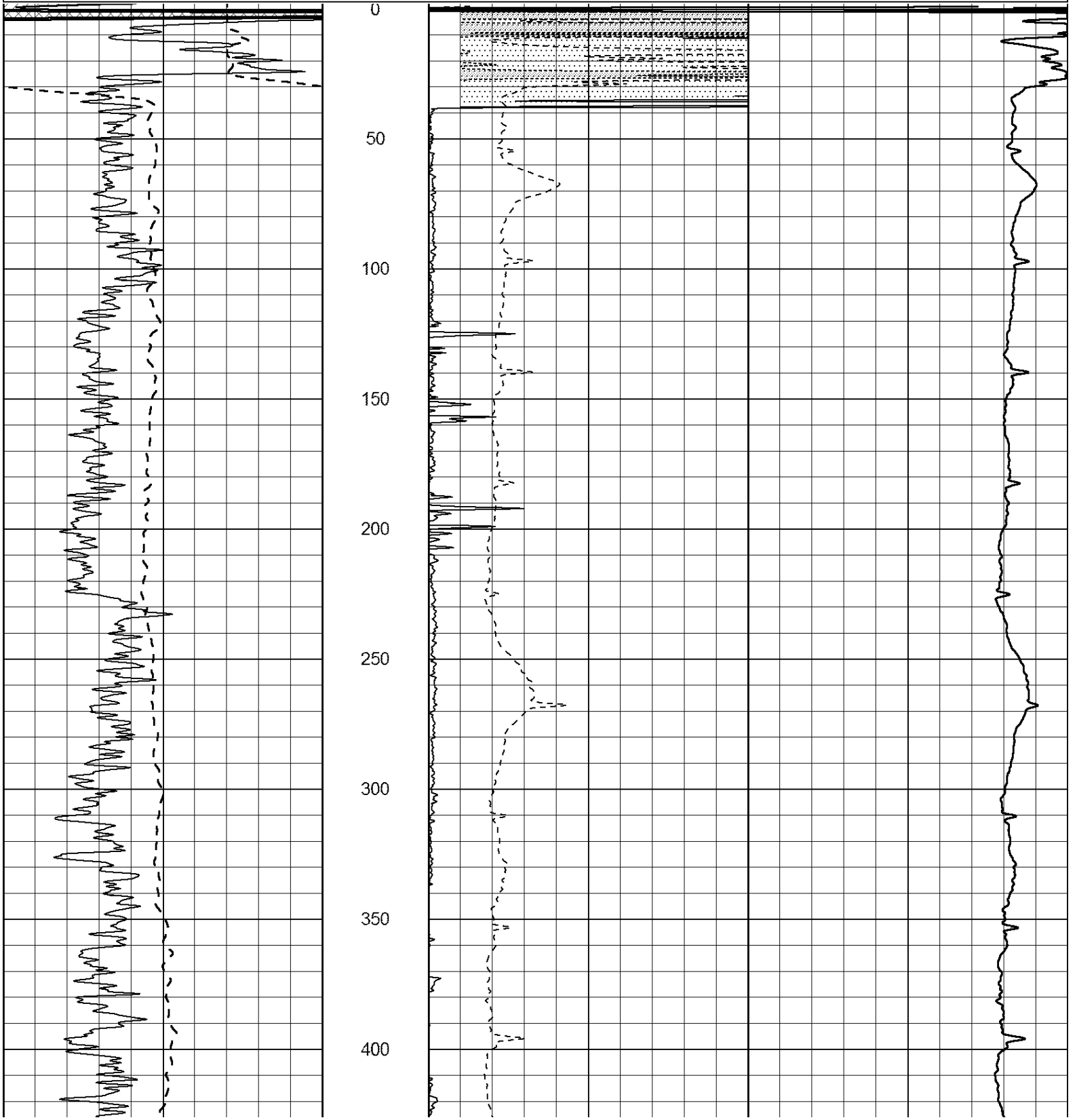
Database File: 008145pe.db
 Dataset Pathname: pass3.10
 Presentation Format: dil2
 Dataset Creation: Mon Jan 23 15:31:49 2012
 Charted by: Depth in Feet scaled 1:600

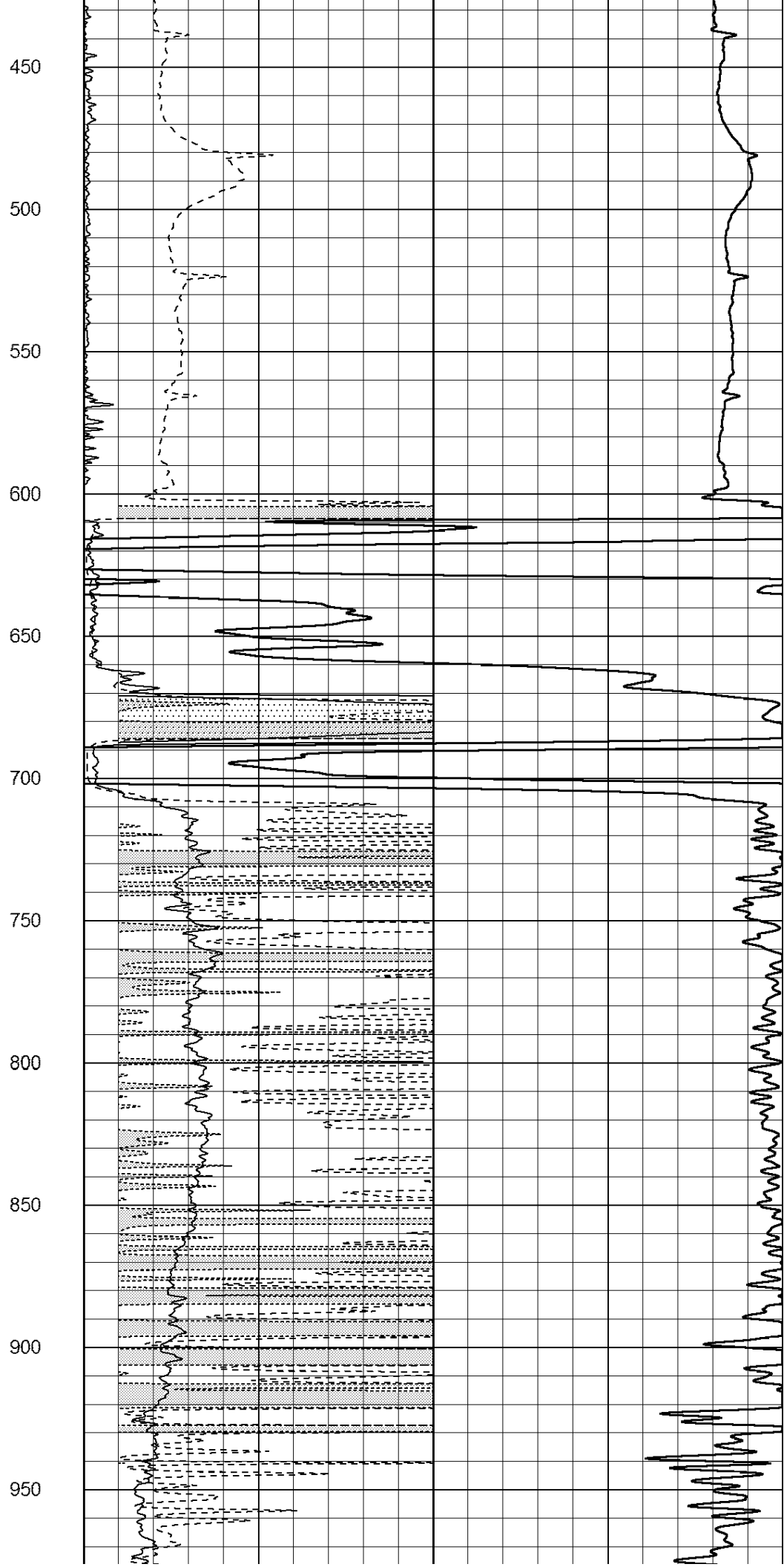
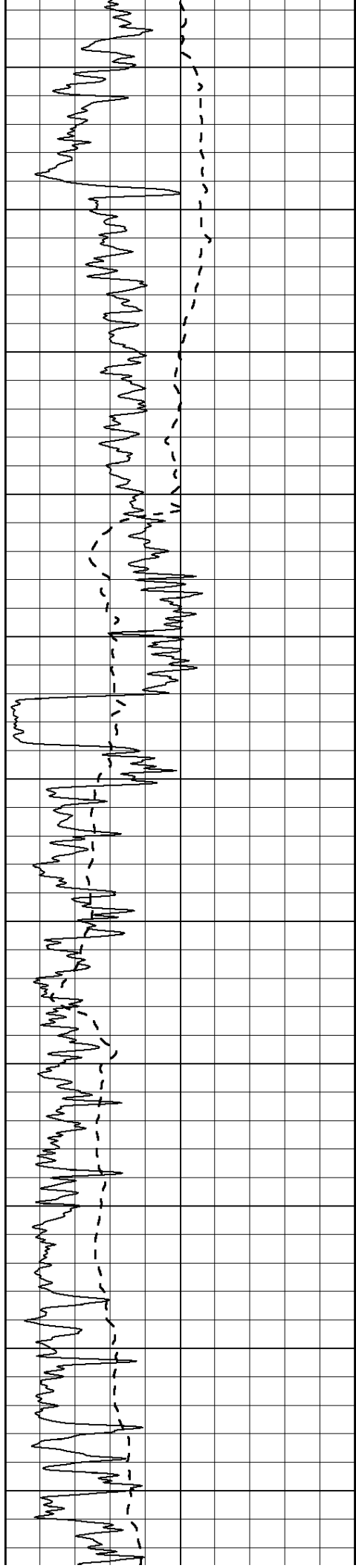
0	Gamma Ray (GAPI)	150
-100	SP (mV)	100

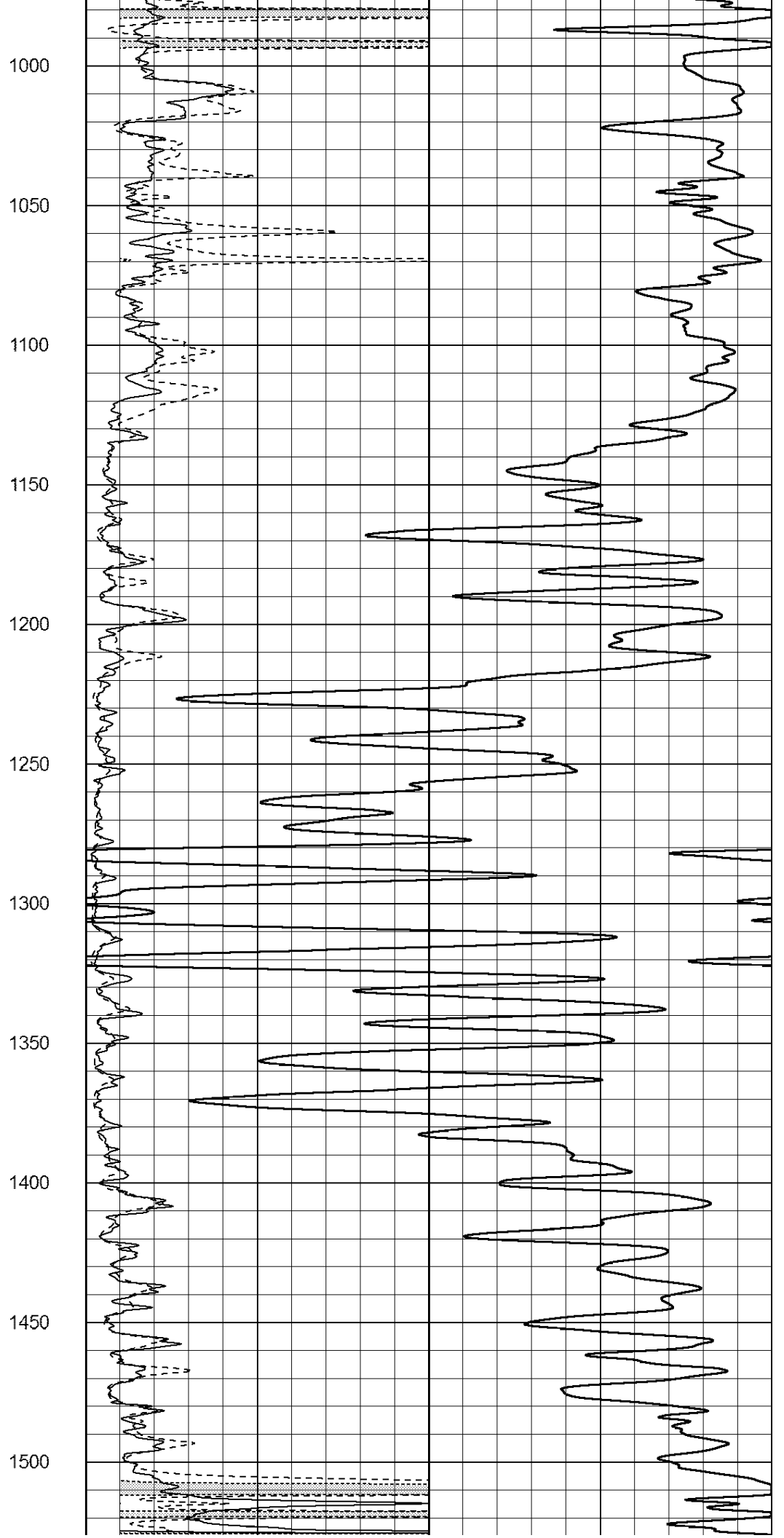
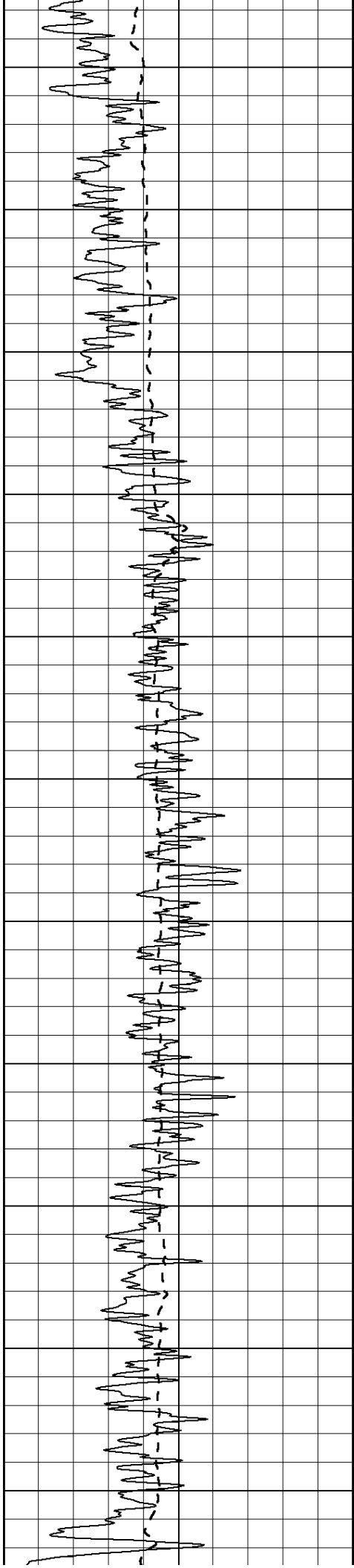
0	RLL3 (Ohm-m)	50
0	RILD (Ohm-m)	50

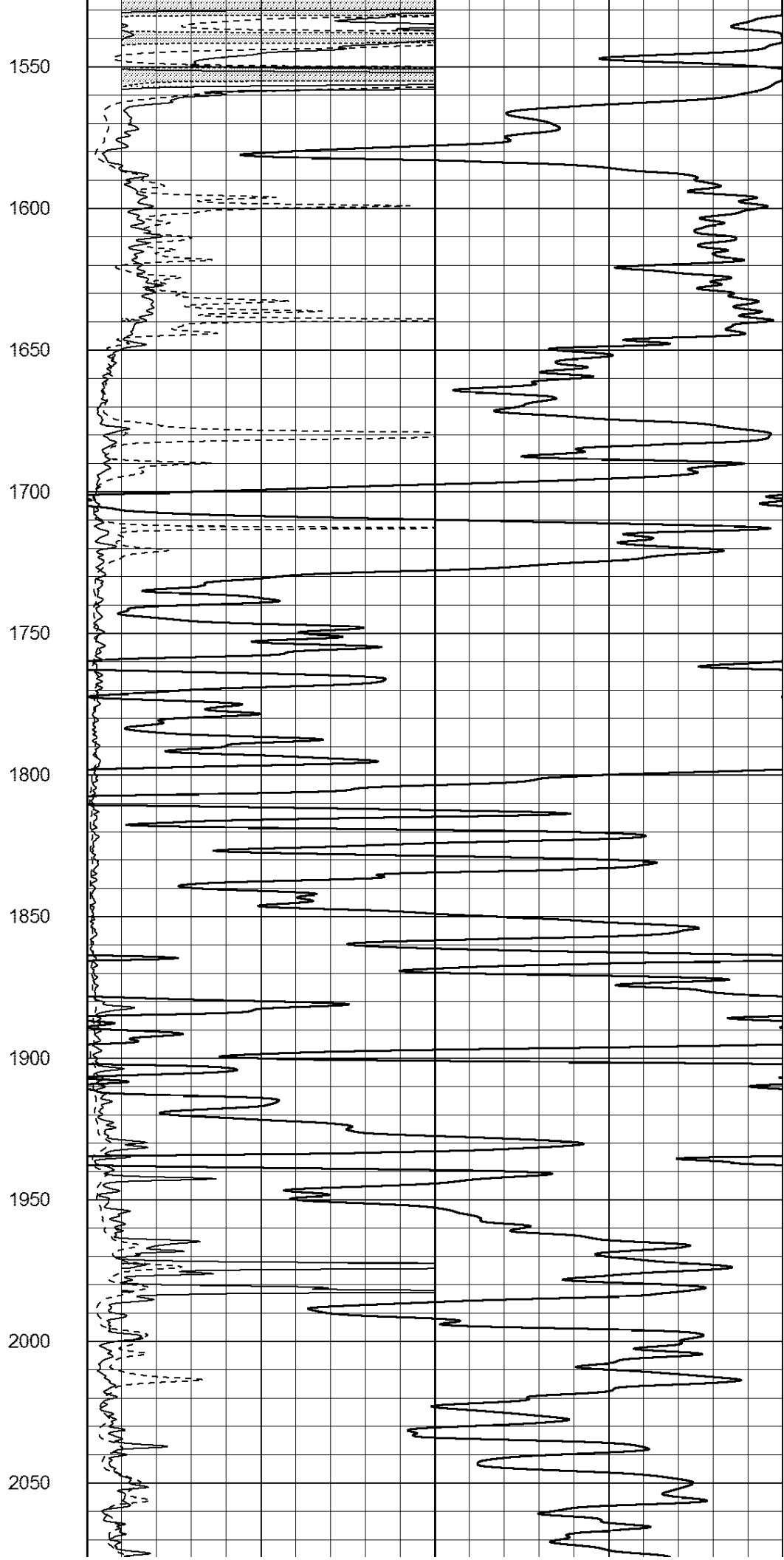
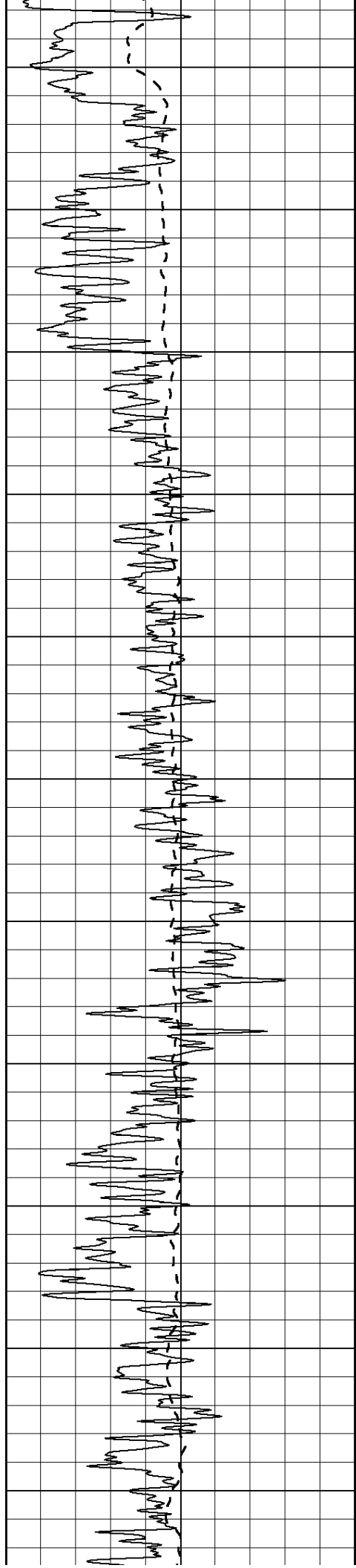
1000	CILD (mmho/m)	0
------	---------------	---

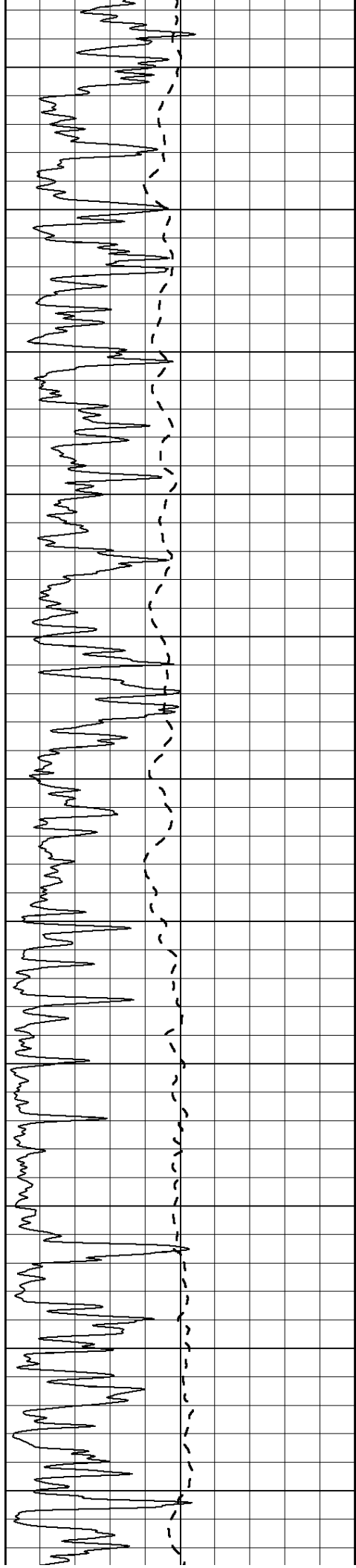
50	RILD X10 (Ohm-m)	500
50	RLL3 X10 (Ohm-m)	500











2100

2150

2200

2250

2300

2350

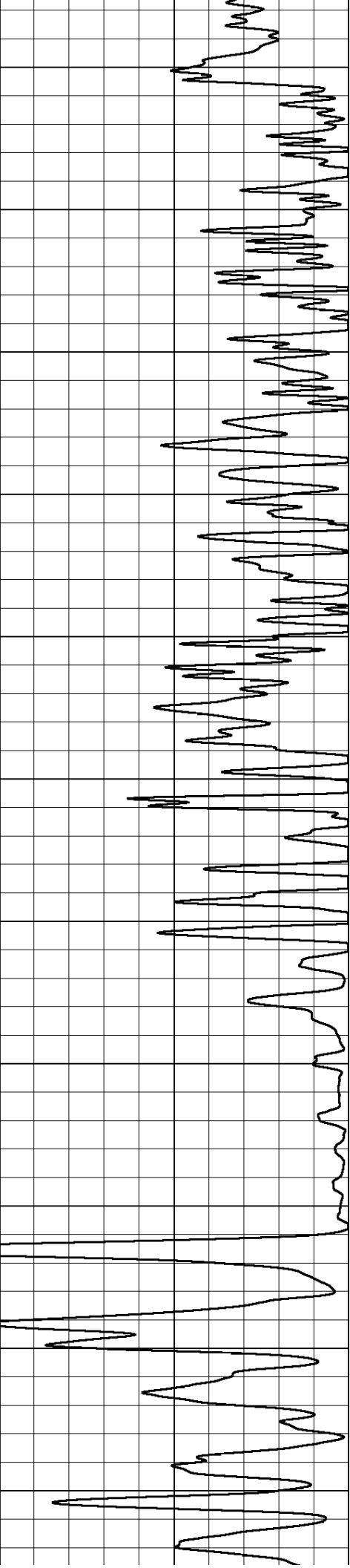
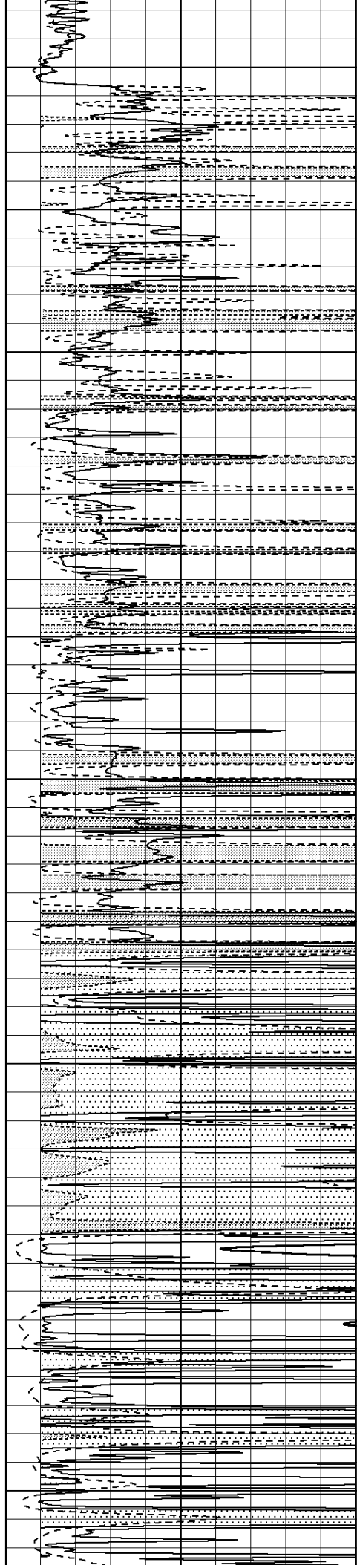
2400

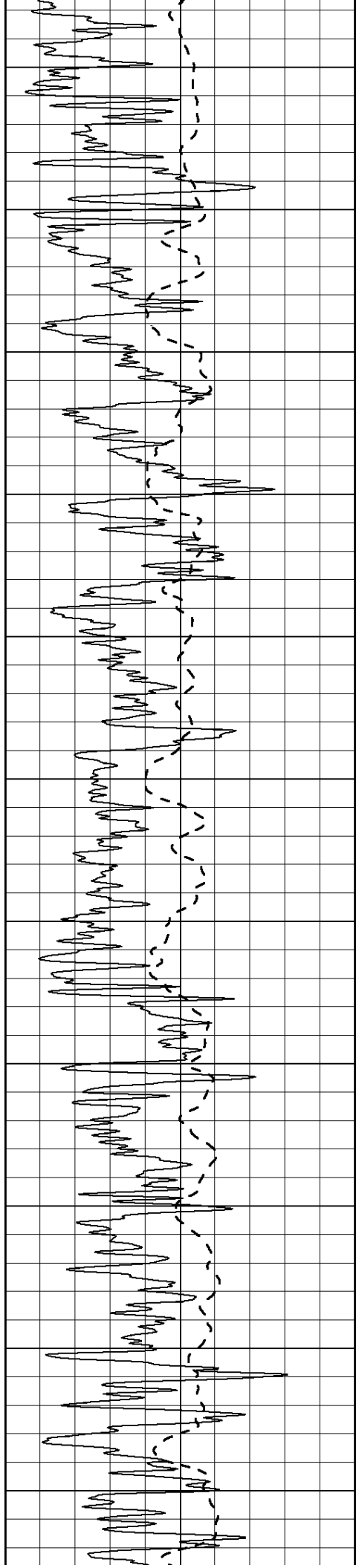
2450

2500

2550

2600





2650

2700

2750

2800

2850

2900

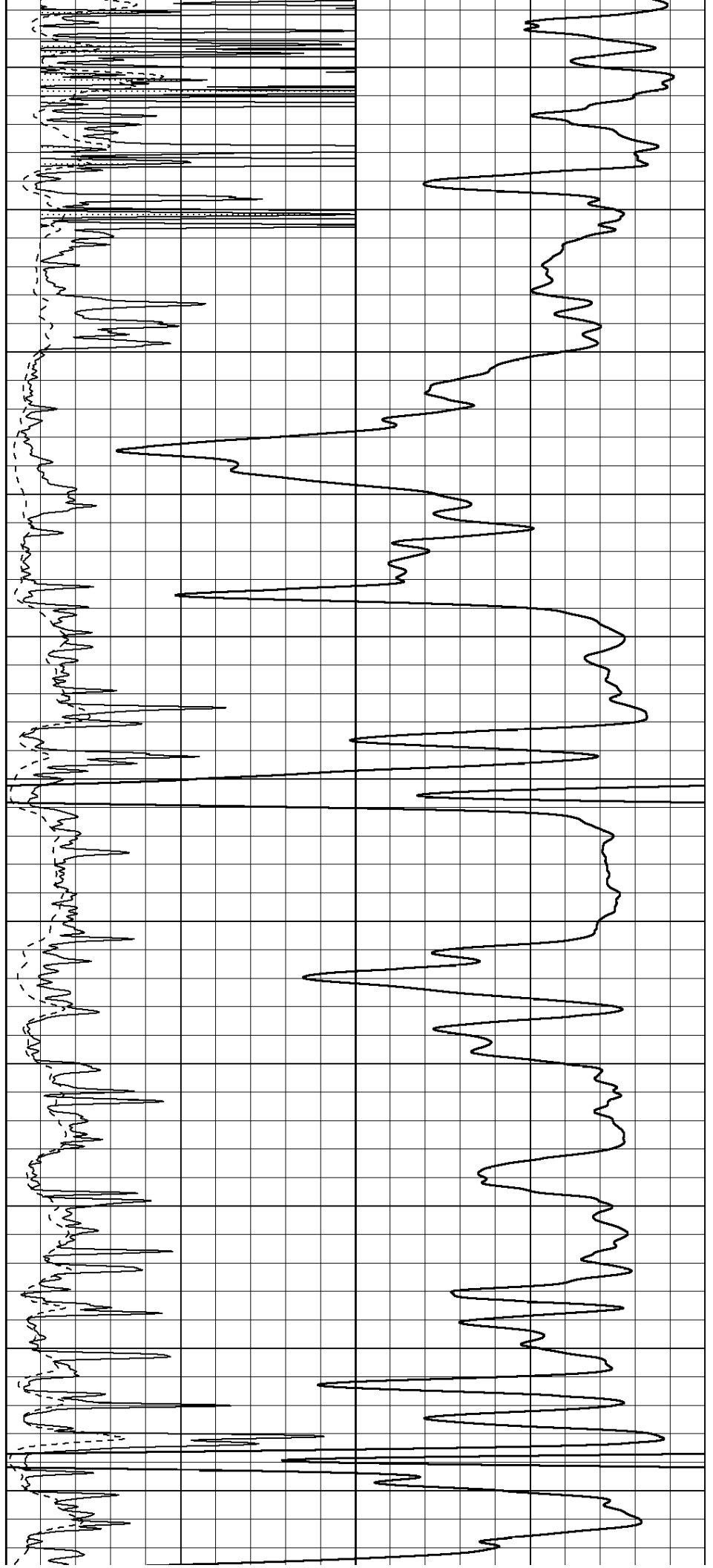
2950

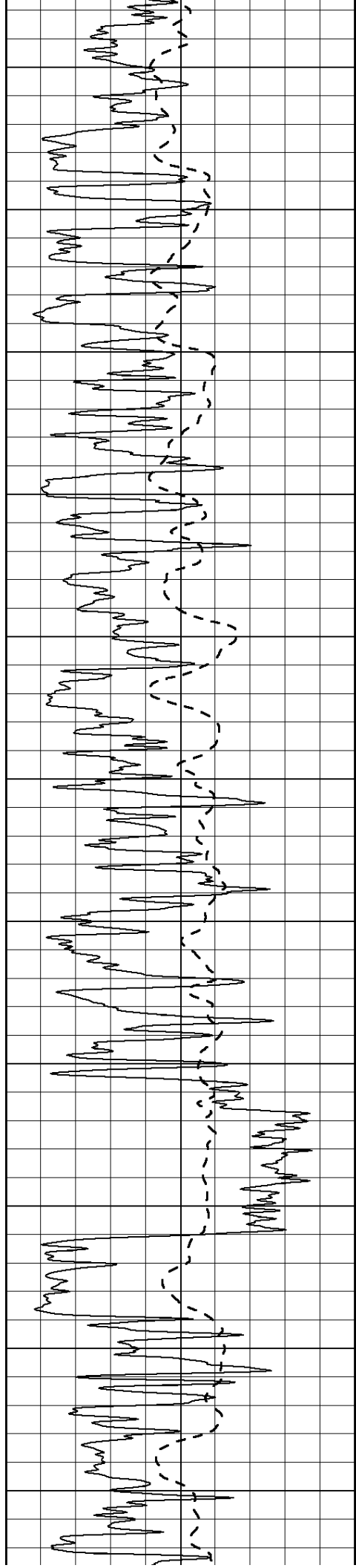
3000

3050

3100

3150





3200

3250

3300

3350

3400

3450

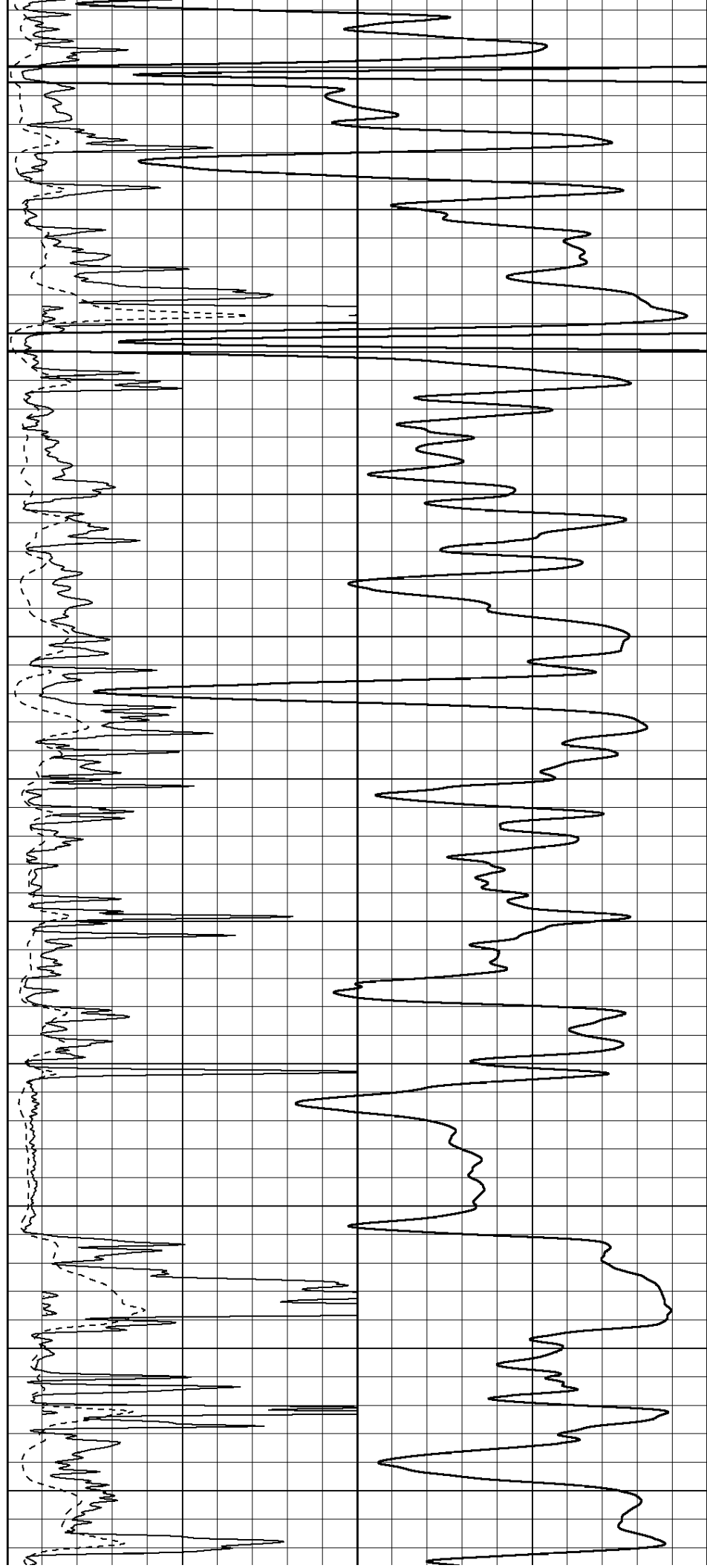
3500

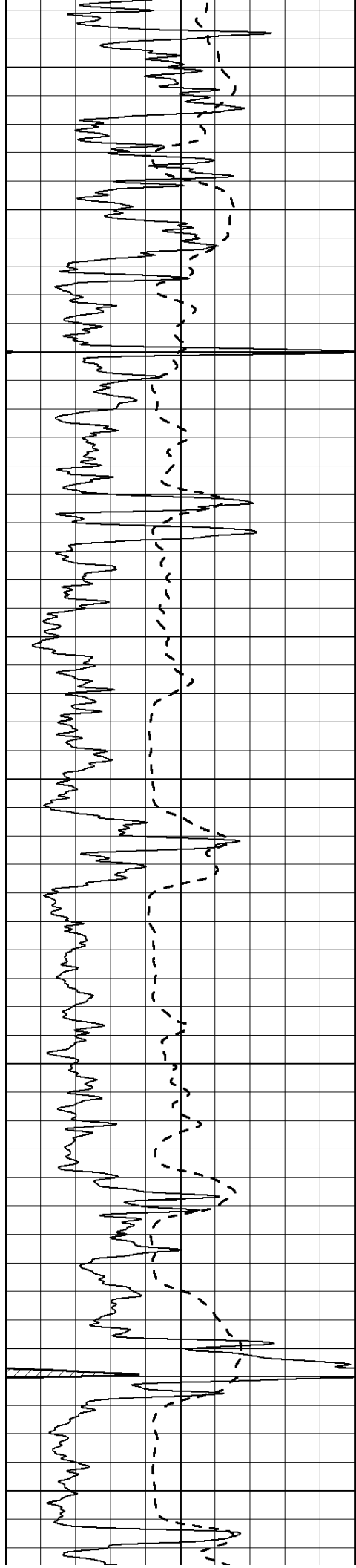
3550

3600

3650

3700





3750

3800

3850

3900

3950

4000

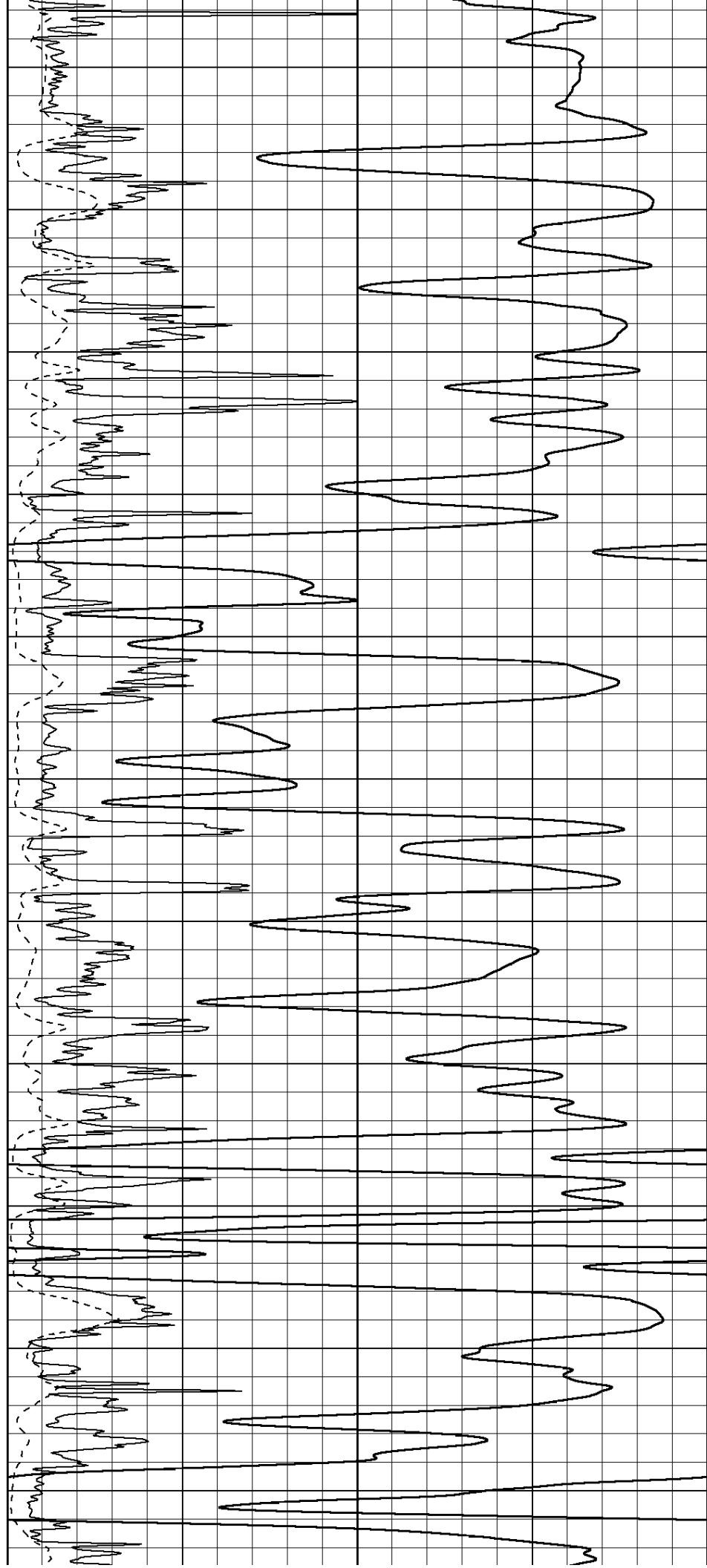
4050

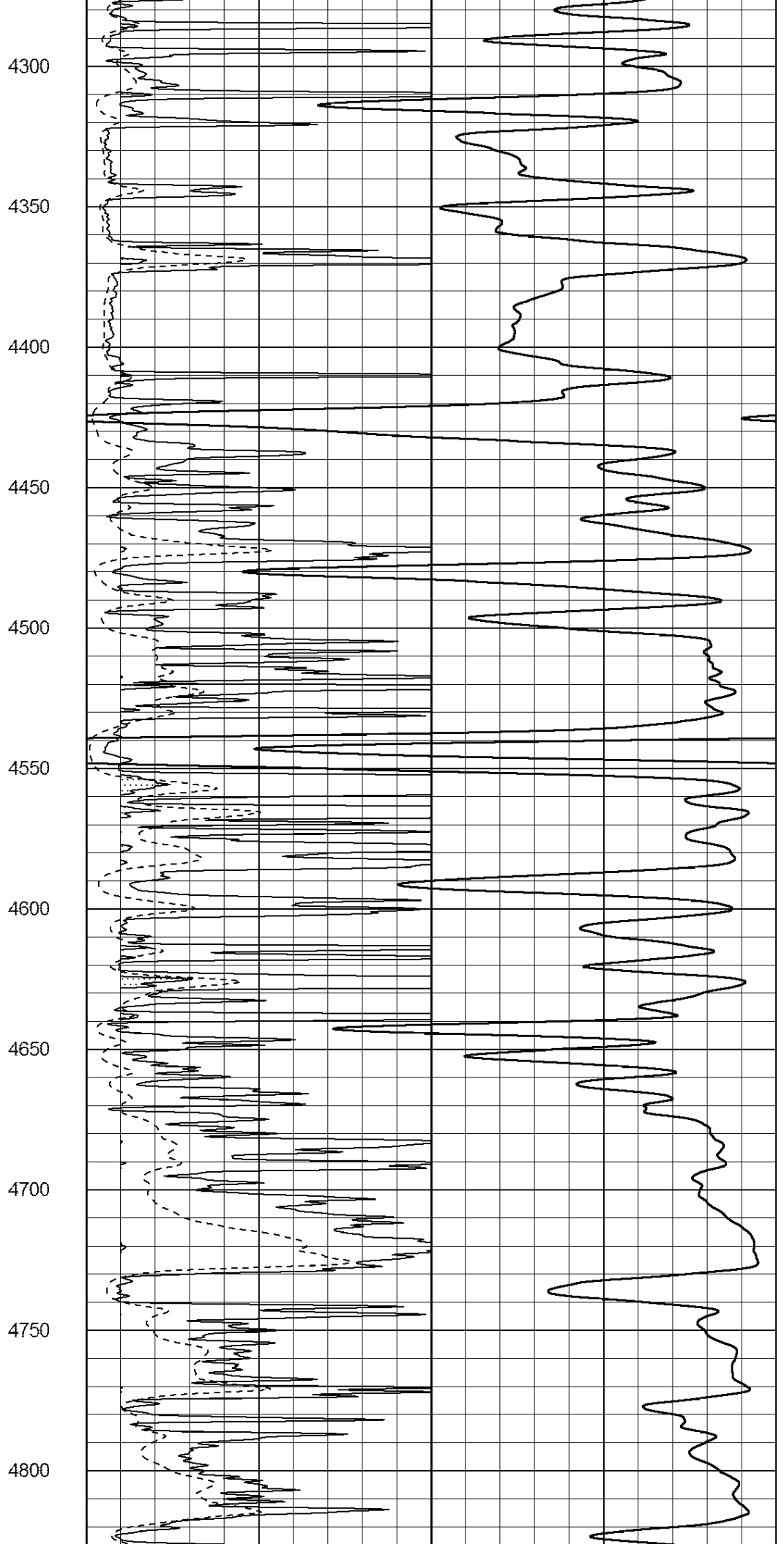
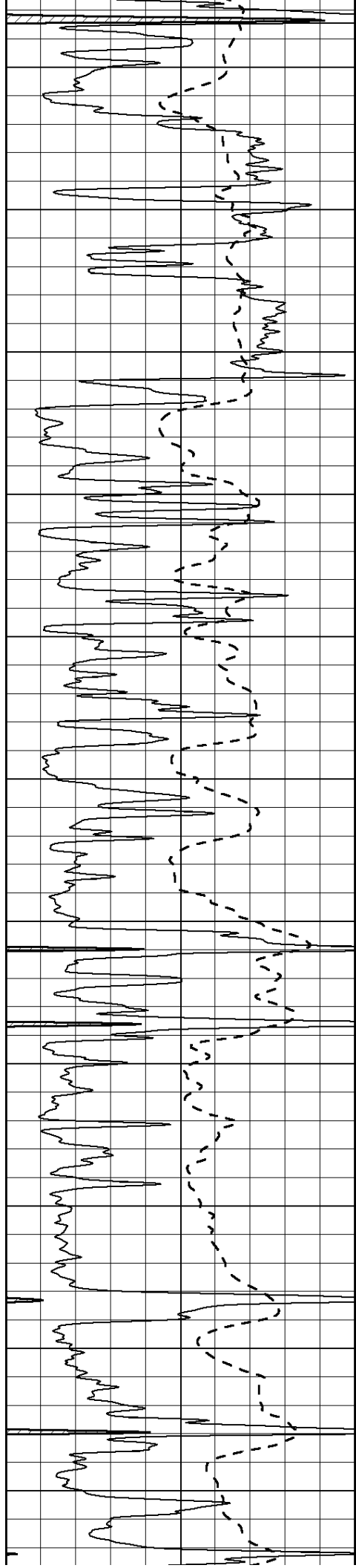
4100

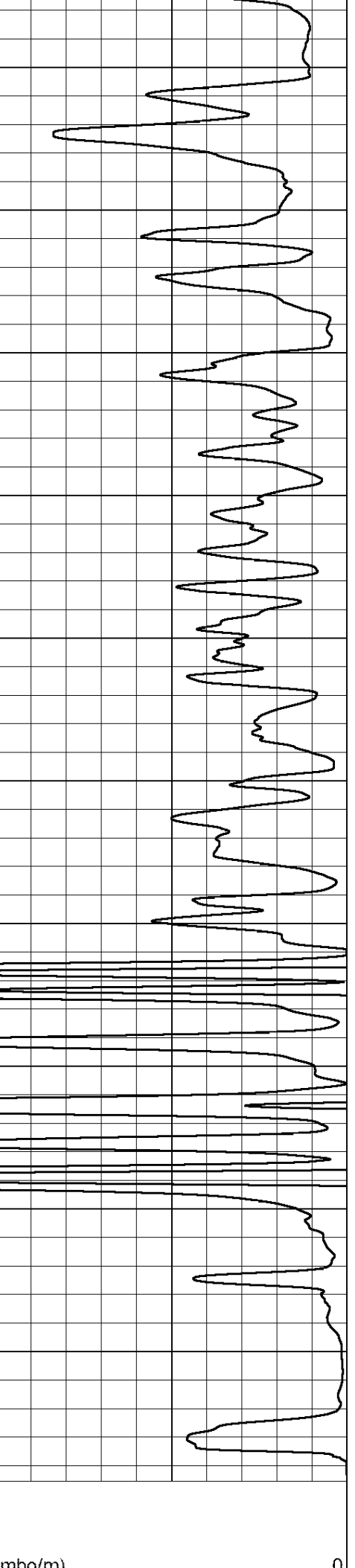
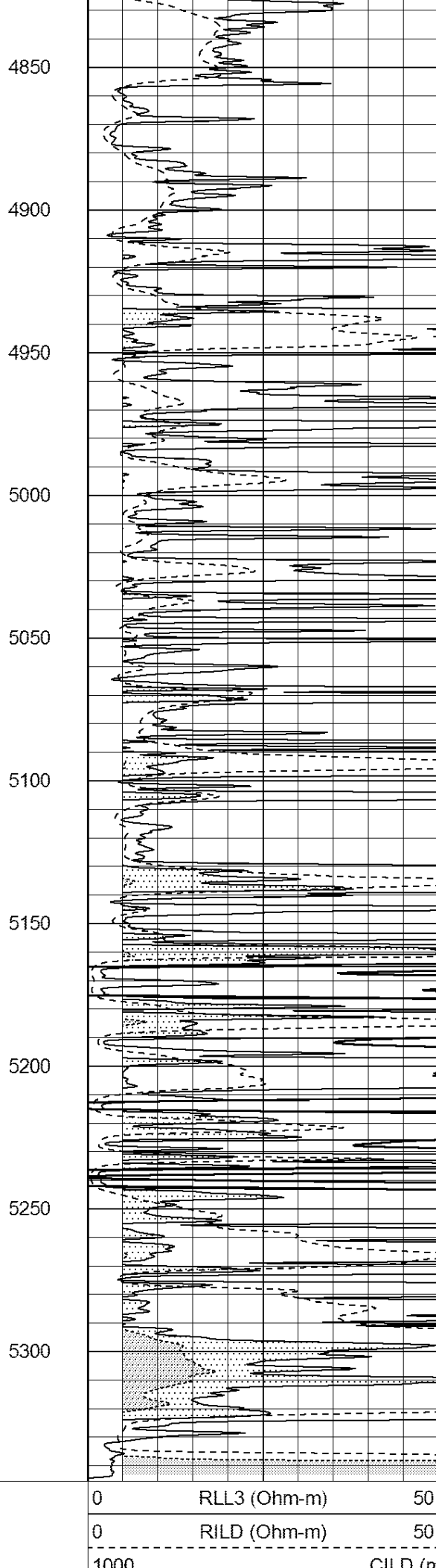
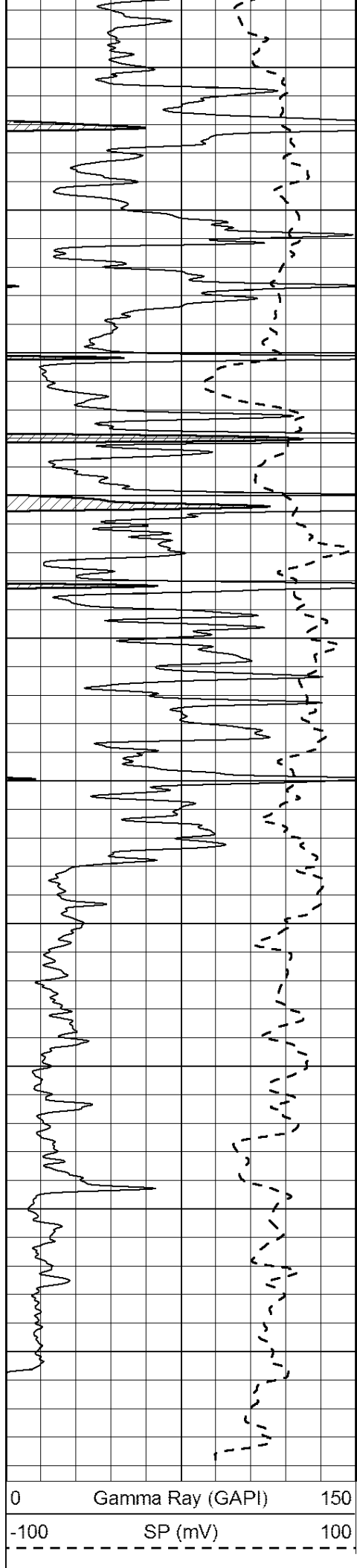
4150

4200

4250







50	RILD X10 (Ohm-m)	500
50	RLL3 X10 (Ohm-m)	500



SUPERIOR
Hays,
Kansas

MAIN SECTION

Database File: 008145pe.db
 Dataset Pathname: pass3.10
 Presentation Format: dil
 Dataset Creation: Mon Jan 23 15:31:49 2012
 Charted by: Depth in Feet scaled 1:240

0	GAMMA RAY (GAPI)	150
-100	SP (mV)	100
-250	Rxo/Rt	50
0	MINMK	20

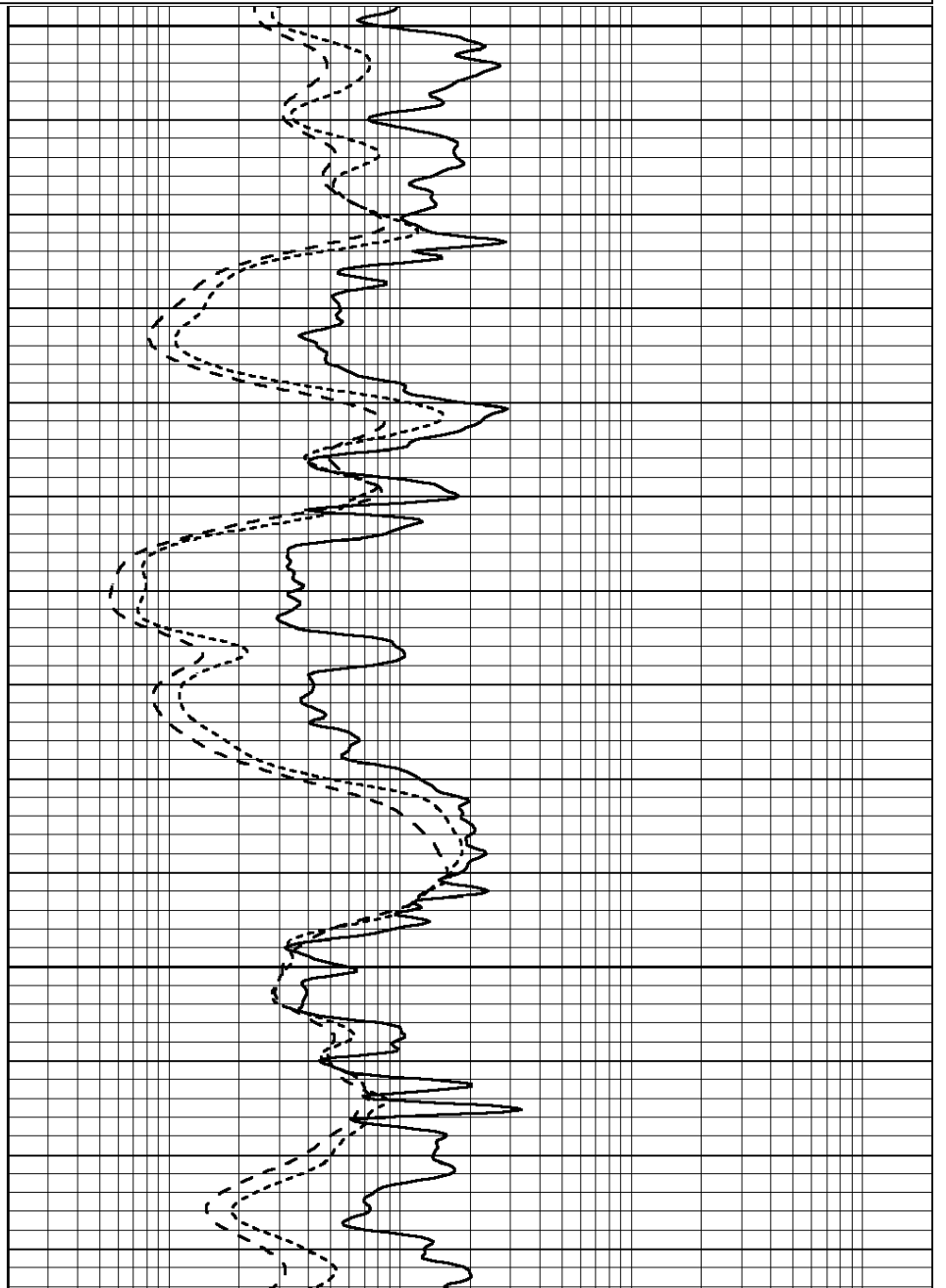
0.2	SHALLOW GUARD (Ohm-m)	2000
0.2	DEEP INDUCTION (Ohm-m)	2000
0.2	MEDIUM INDUCTION (Ohm-m)	2000

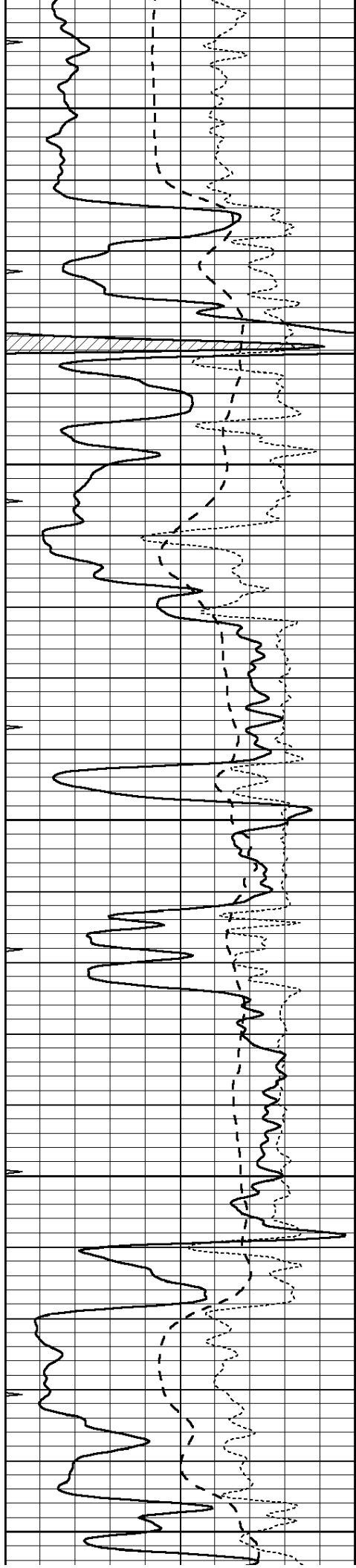


4100

4150

4200





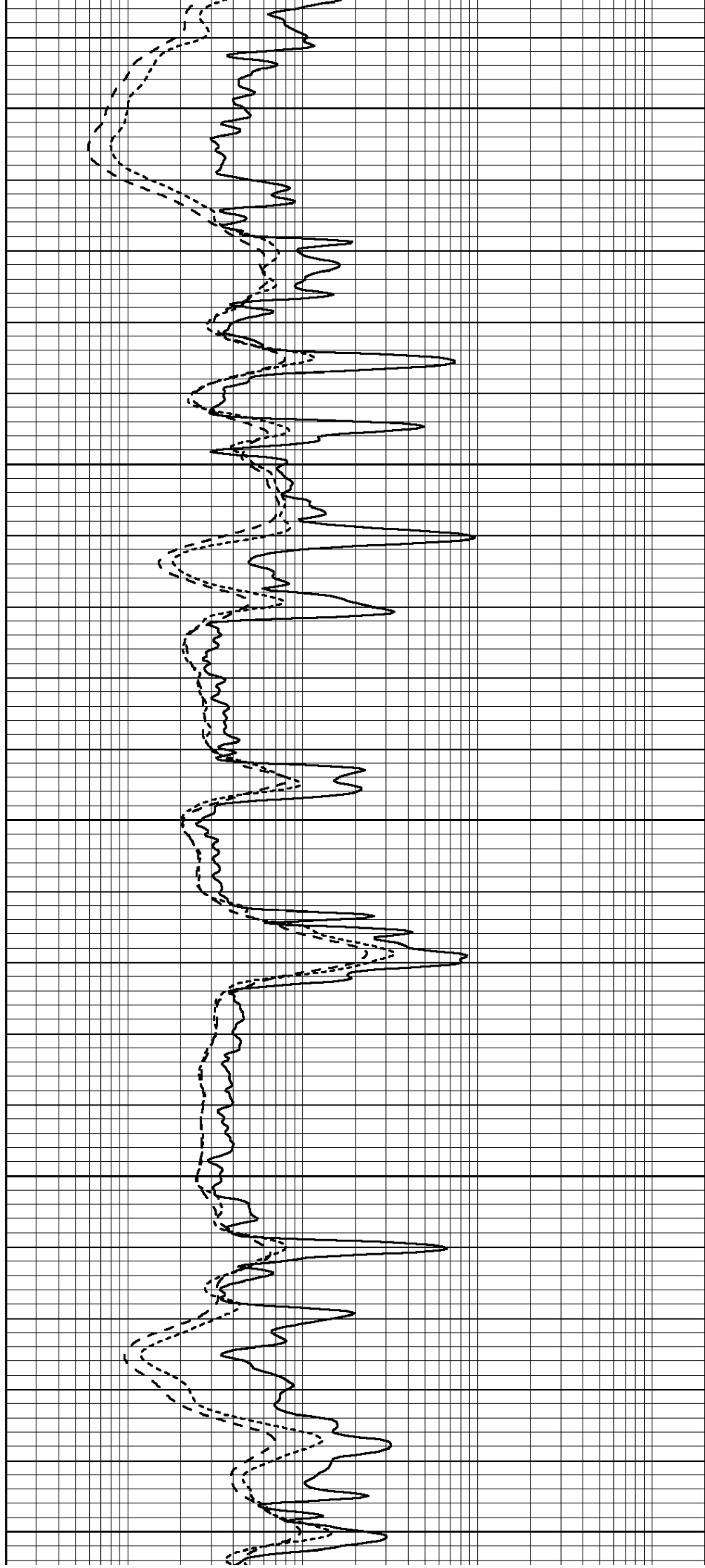
4250

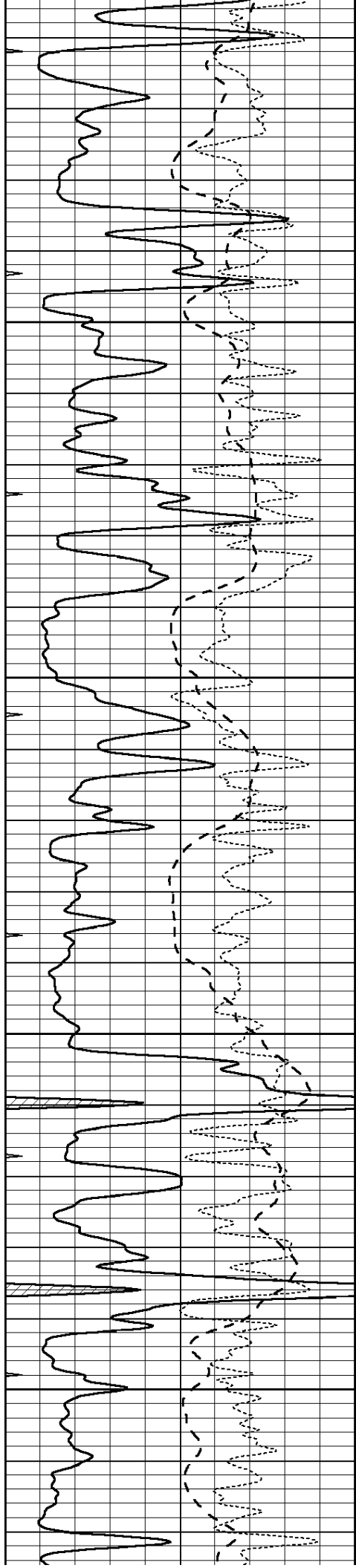
4300

4350

4400

4450



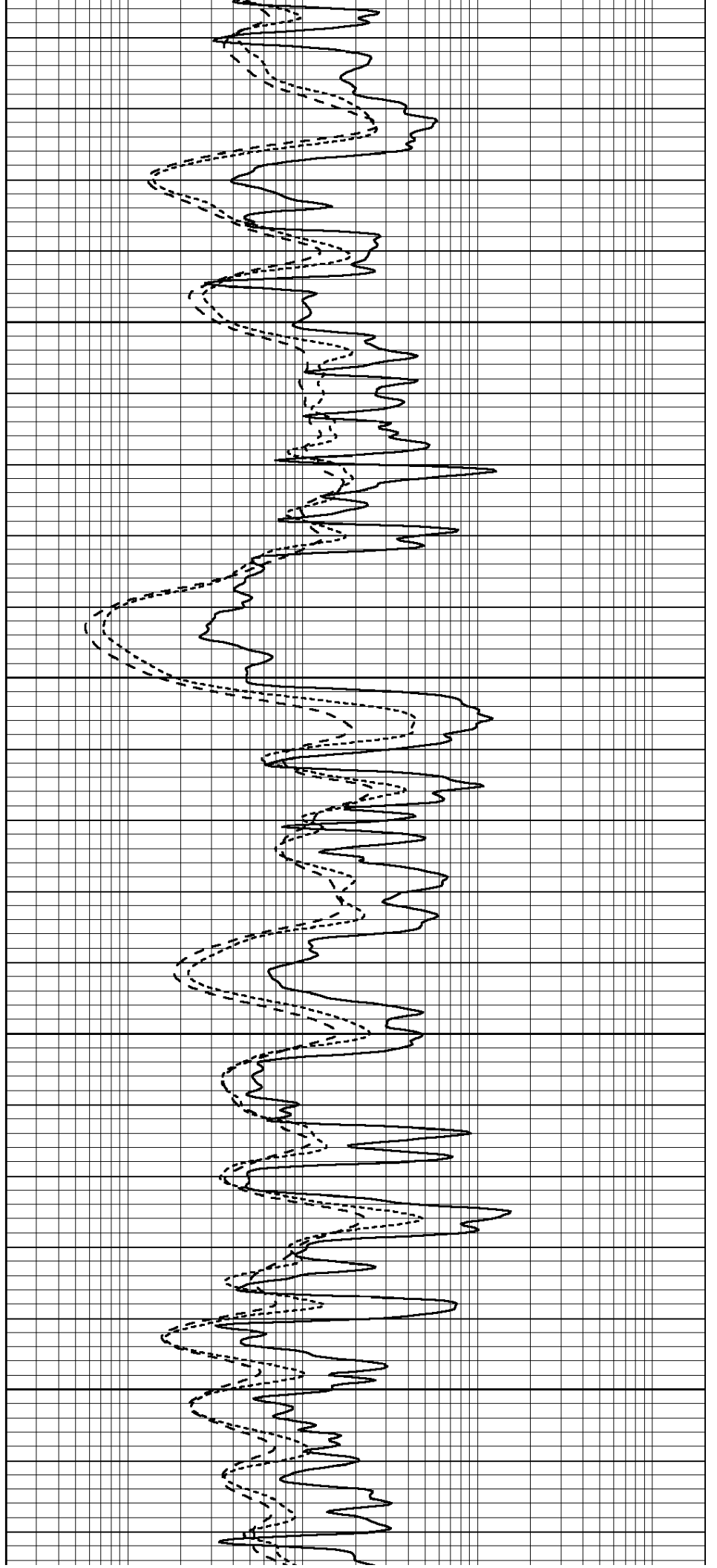


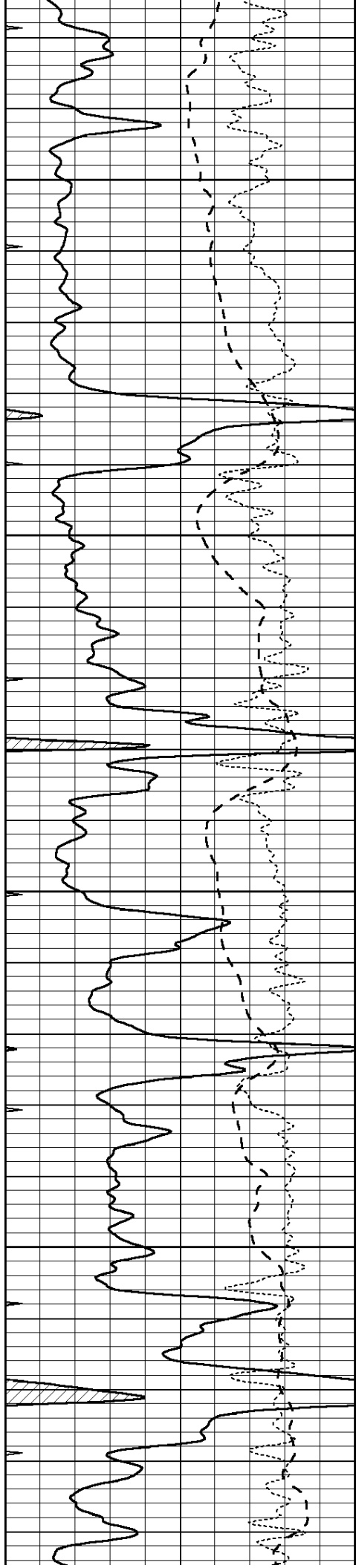
4500

4550

4600

4650



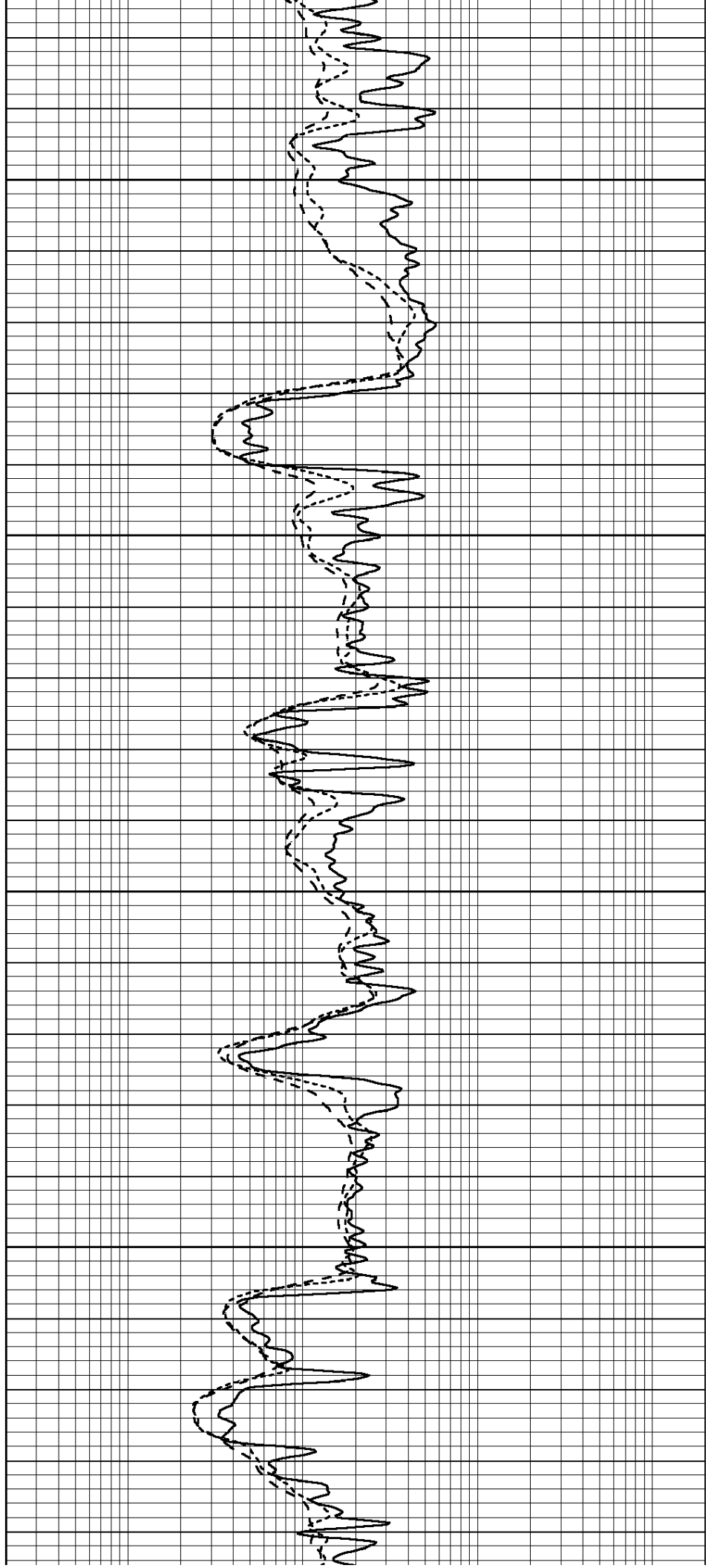


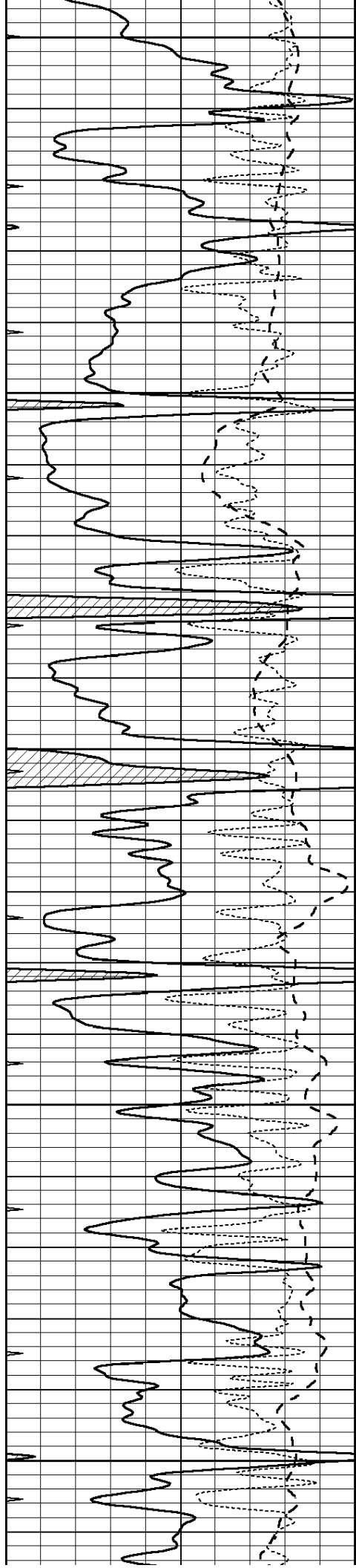
4700

4750

4800

4850





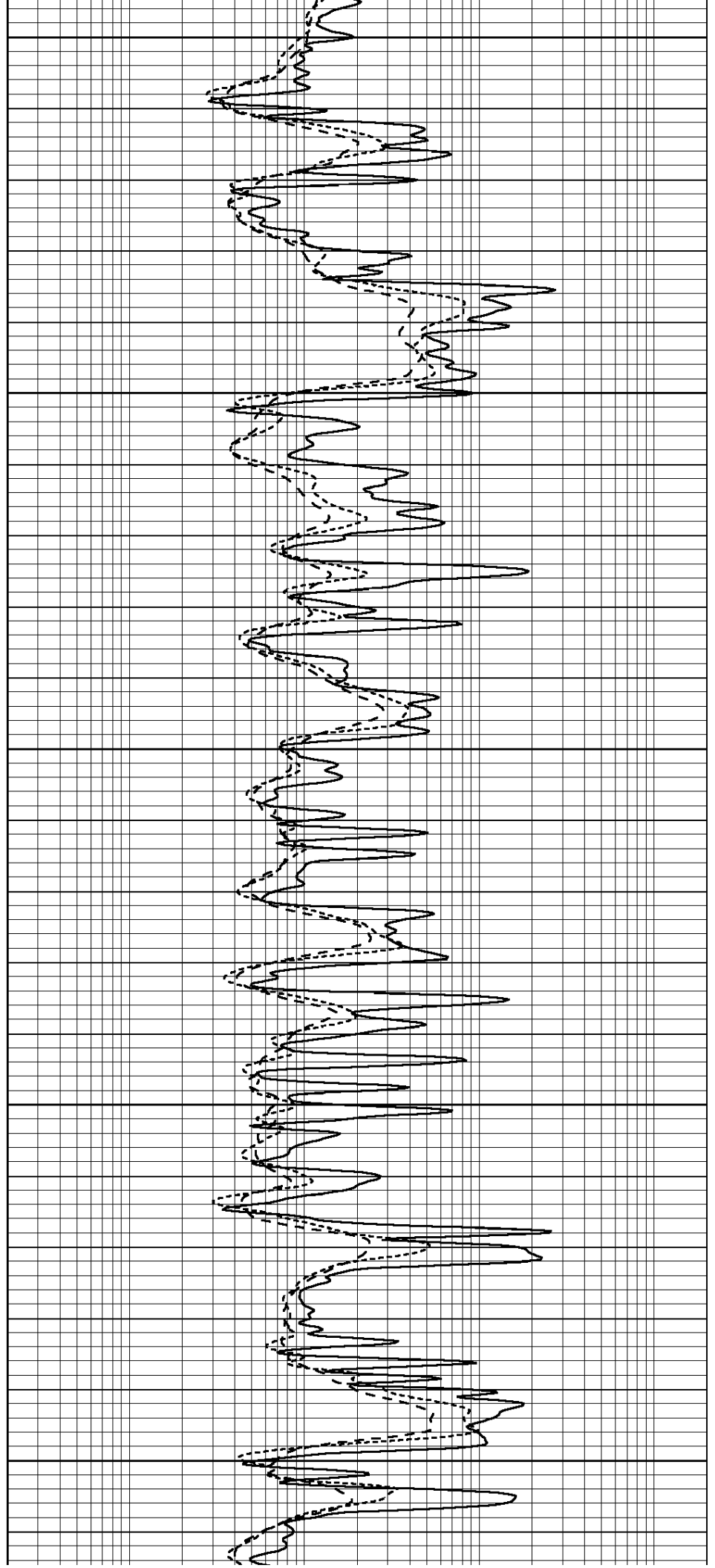
4900

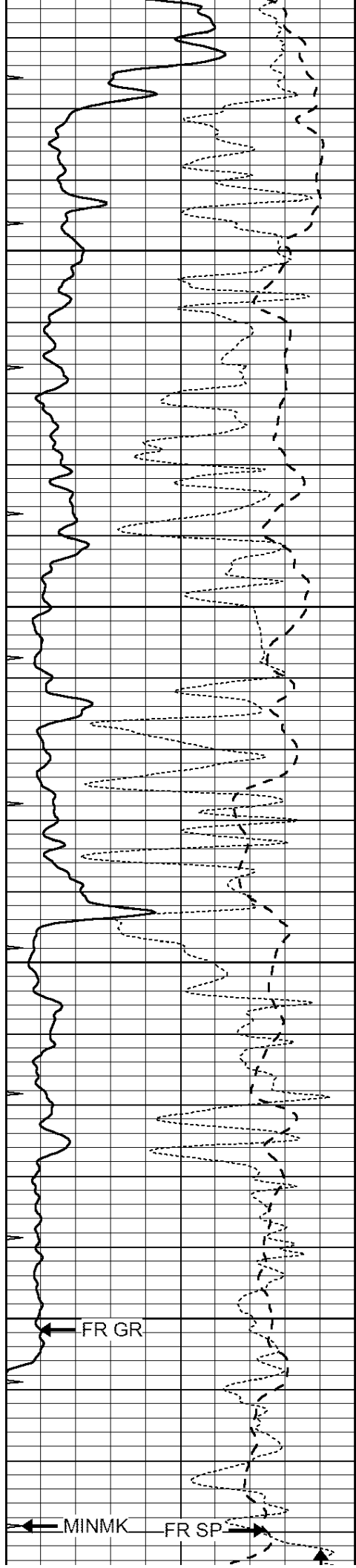
4950

5000

5050

5100





5150

5200

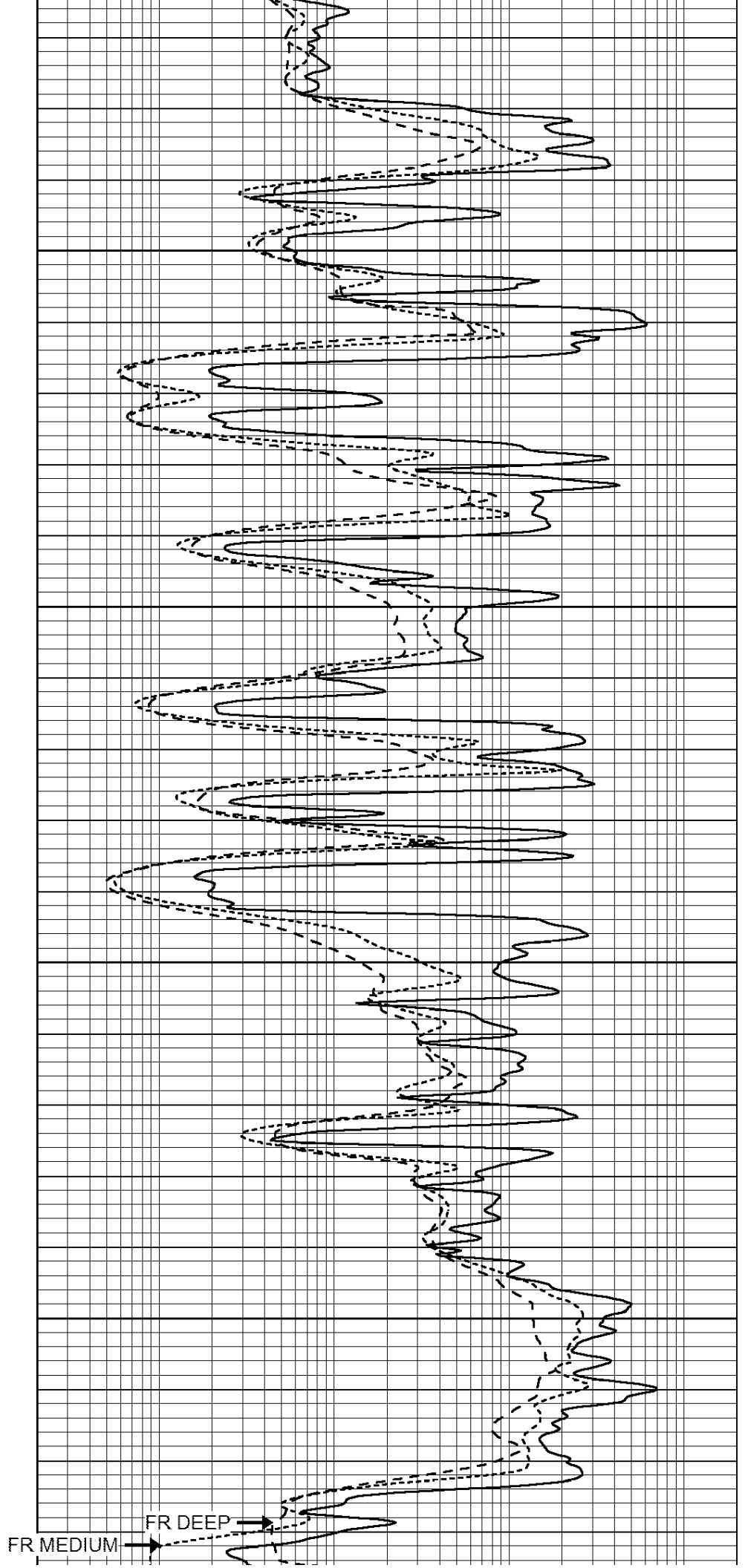
5250

5300

FR GR

MINMK

FR SP



FR MEDIUM

FR DEEP

	RXO/RT	
0	GAMMA RAY (GAPI)	150
-100	SP (mV)	100
-250	Rxo/Rt	50
0	MINMK	20

LTD 5340

	FR GUARD	
0.2	SHALLOW GUARD (Ohm-m)	2000
0.2	DEEP INDUCTION (Ohm-m)	2000
0.2	MEDIUM INDUCTION (Ohm-m)	2000



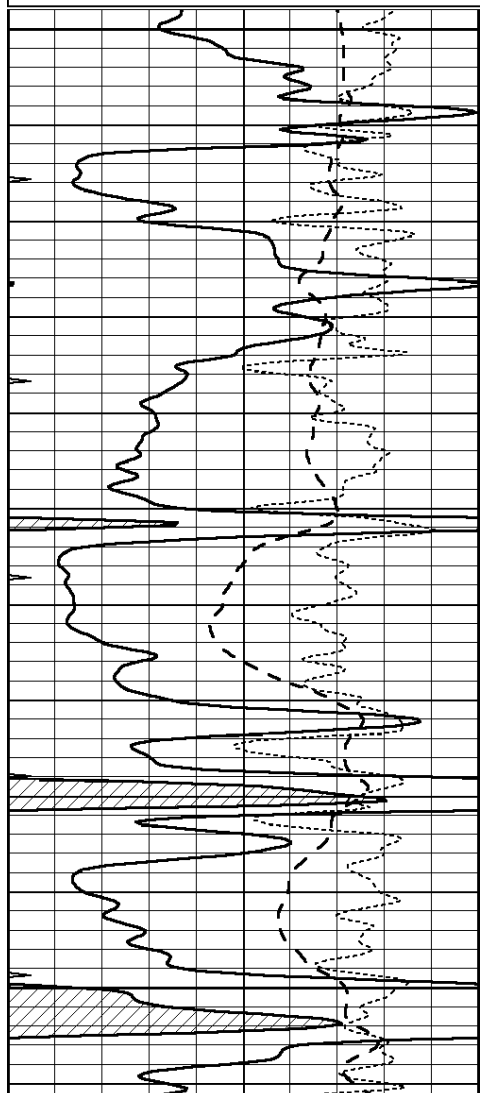
SUPERIOR
Hays,
Kansas

REPEAT SECTION

Database File: 008145pe.db
 Dataset Pathname: pass2.5
 Presentation Format: dil
 Dataset Creation: Mon Jan 23 14:16:03 2012
 Charted by: Depth in Feet scaled 1:240

0	GAMMA RAY (GAPI)	150
-100	SP (mV)	100
-250	Rxo/Rt	50
0	MINMK	20

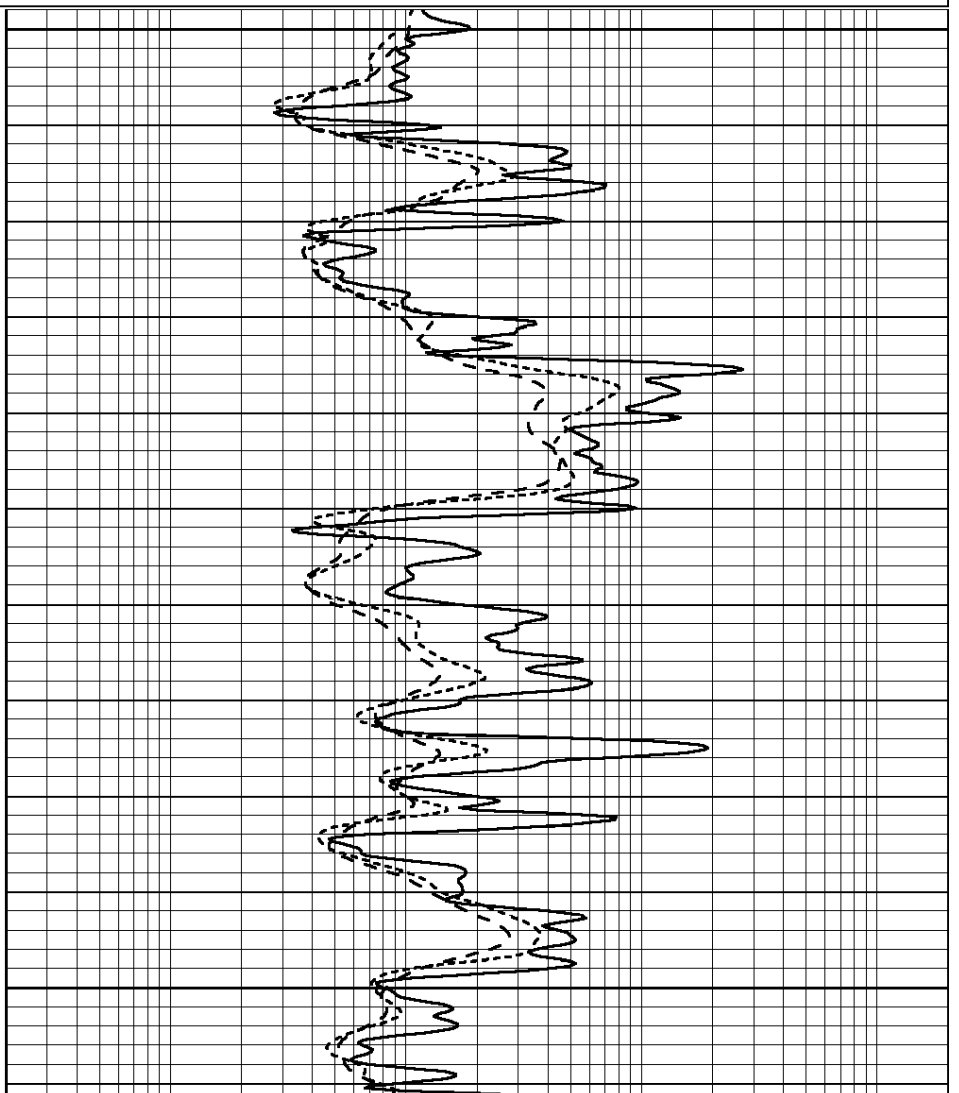
0.2	SHALLOW GUARD (Ohm-m)	2000
0.2	DEEP INDUCTION (Ohm-m)	2000
0.2	MEDIUM INDUCTION (Ohm-m)	2000

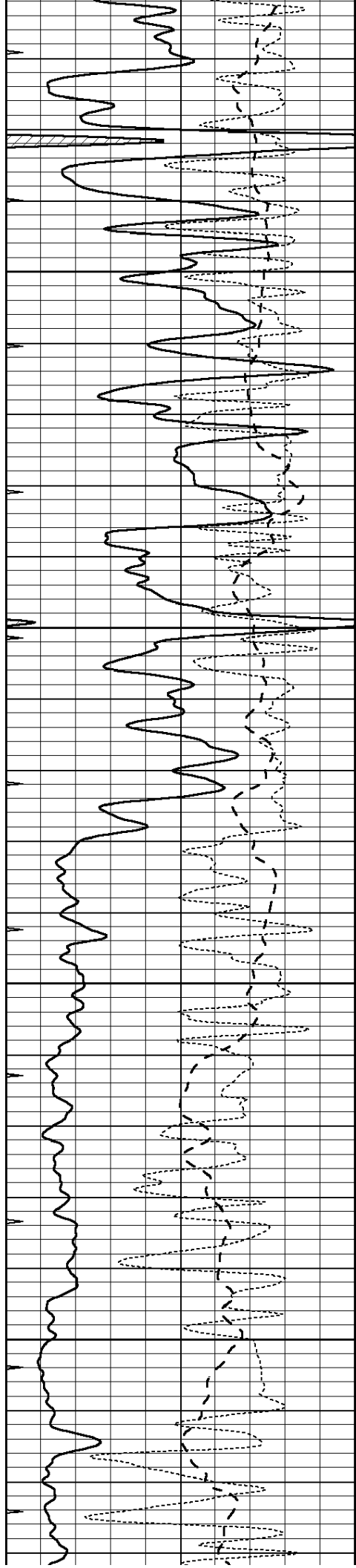


4900

4950

5000



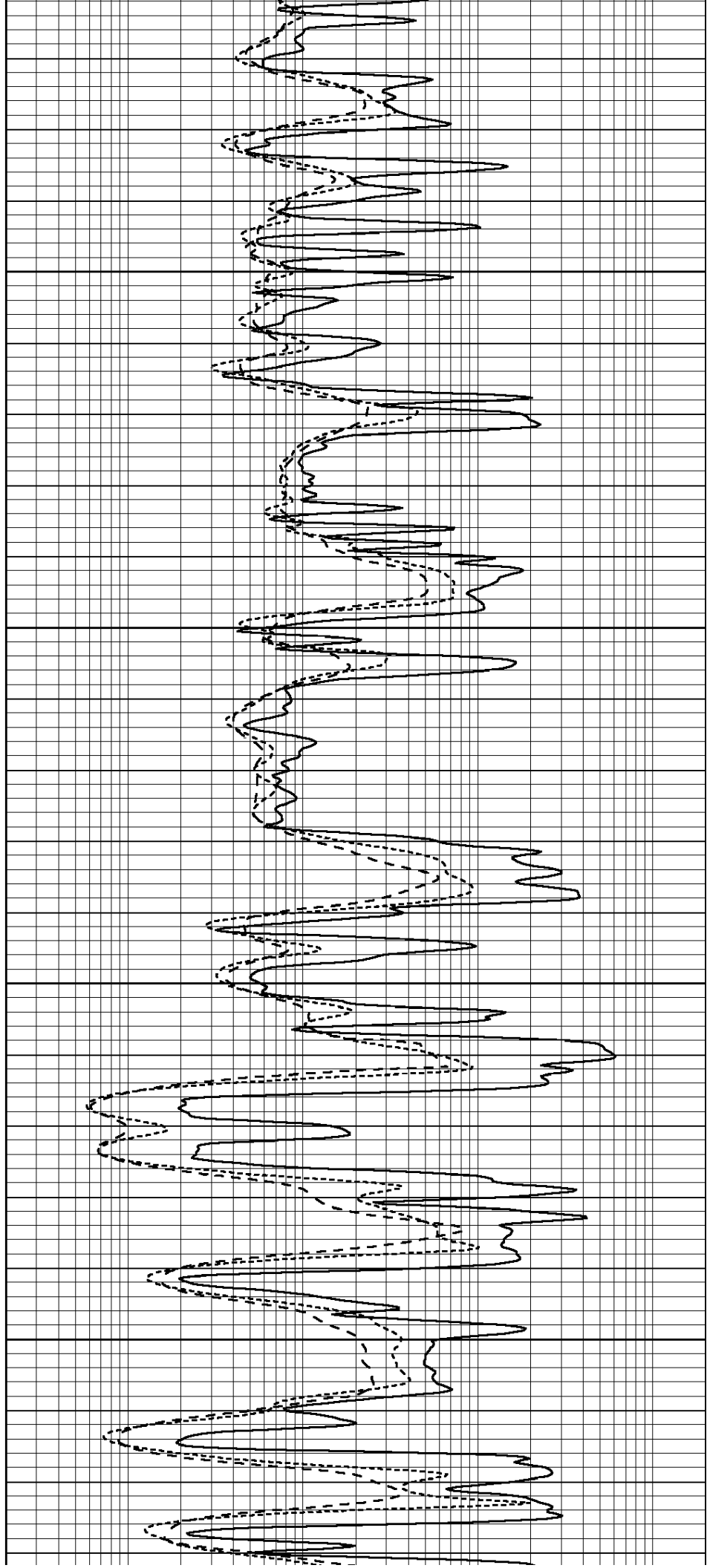


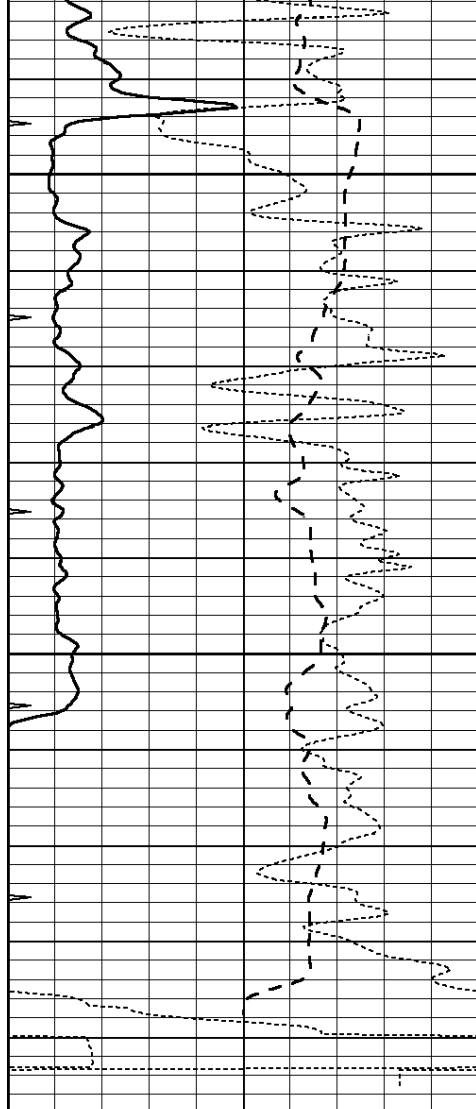
5050

5100

5150

5200

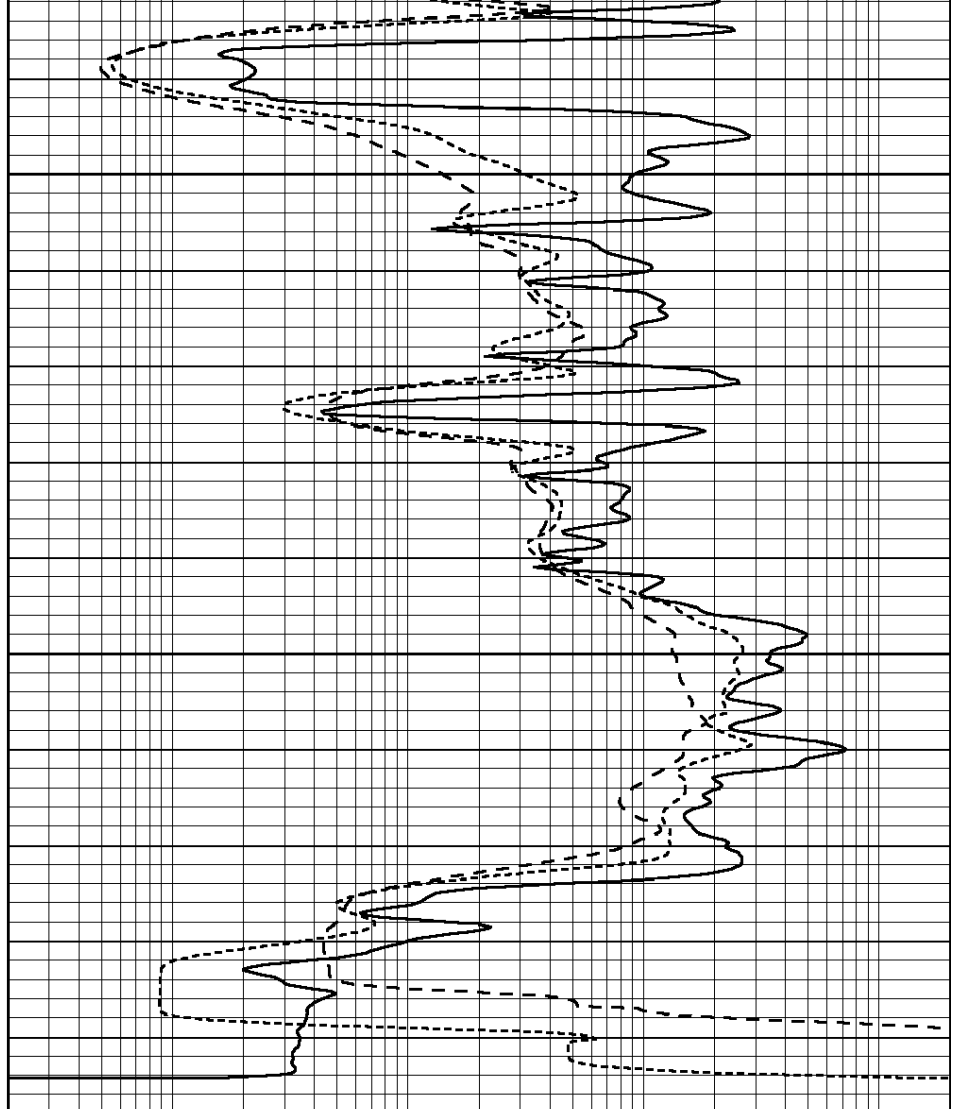




0	GAMMA RAY (GAPI)	150
-100	SP (mV)	100
-250	Rxo/Rt	50
0	MINMK	20

5250

5300



0.2	SHALLOW GUARD (Ohm-m)	2000
0.2	DEEP INDUCTION (Ohm-m)	2000
0.2	MEDIUM INDUCTION (Ohm-m)	2000

Calibration Report

Database File: 008145pe.db
 Dataset Pathname: pass3.10
 Dataset Creation: Mon Jan 23 15:31:49 2012

Dual Induction Calibration Report

Serial-Model: DIL3-GEAR
 Performed: Mon Jan 23 12:20:15 2012

Loop:	Readings			References			Results	
	Air	Loop		Air	Loop		m	b
Deep	0.011	0.656	V	0.000	400.000	mmho/m	640.000	7.000
Medium	0.013	0.740	V	0.000	462.500	mmho/m	700.000	-7.000
Internal:	Zero	Cal		Zero	Cal		m	b
Deep	0.002	0.645	V	0.000	400.000	mmho/m	622.059	-1.071
Medium	0.007	0.740	V	0.000	462.500	mmho/m	631.393	-4.555

Litho Density Calibration Report

Litho Density Calibration

	Background	Magnesium	Aluminum	Sandstone	
Window 1	1686.6	11612.8	3932.0	12718.8	cps
Window 2	1531.4	9204.7	3267.8	9851.9	cps
Window 3	1198.3	4733.6	1952.5	4920.6	cps
Window 4	317.3	321.2	325.9	303.6	cps
Long Space	0.0	7673.3	1736.4	8320.4	cps
Short Space	1.7	2548.5	1657.2	2628.8	cps
Rho		1.7100	2.5900	1.3800	g/cc
Pe			2.5700	1.5500	
Rib Angle	: 43.8	Rib Slope	: 0.961	Density/Spine Ratio	: 0.569
Spine Angle	: 73.8	Spine Slope	: 3.453	Spine Intercept	: -18.1

Caliper

	Readings	Reference	
Low Ref	4.0	8.3	
High Ref	5.9	15.0	
	Gain: 3.5		Offset: -5.5

Compensated Neutron Calibration Report

Serial Number: 070808
 Tool Model: Probe

PRE-SURVEY VERIFICATION

Detector	Readings	Measured	Target
Short Space	cps		
Long Space	cps	pu	pu

POST-SURVEY VERIFICATION

Detector	Readings	Measured	Target
Short Space	cps		
Long Space	cps	pu	pu

Gamma Ray Calibration Report

Serial Number: 070559
 Tool Model: OPEN_GR
 Performed: Mon Jan 23 12:19:35 2012

Calibrator Value: 1.0 GAPI

Background Reading: 0.0 cps
 Calibrator Reading: 1.0 cps

Sensitivity: 0.2800 GAPI/cps