



SUPERIOR
Hays,
Kansas

MICRO
LOG

Company VINCENT OIL CORPORATION
Well ZIMMERMAN #1-8
Field WILDCAT
County FORD
State KANSAS

Company VINCENT OIL CORPORATION
Well ZIMMERMAN #1-8
Field WILDCAT
County FORD State KANSAS

Location: API #: 15-057-20778-0000
1880' FNL & 330' FWL
S/2 - NW - SW - NW
SEC 8 TWP 28S RGE 23W
Permanent Datum GROUND LEVEL Elevation 2512
Log Measured From KELLY BUSHING 10' A.G.L.
Drilling Measured From KELLY BUSHING
Other Services
CDL/CDL/PE
DIL/SONIC
Elevation
K.B. 2522
D.F. 2520
G.L. 2512

Date	1/23/12
Run Number	TWO
Depth Driller	5340
Depth Logger	5340
Bottom Logged Interval	5320
Top Log Interval	4100
Casing Driller	8 5/8"@608'
Casing Logger	608
Bit Size	7 7/8"
Type Fluid in Hole	CHEMICAL MUD
Density / Viscosity	8.8/5.1
pH / Fluid Loss	9.5/7.2
Source of Sample	FLOWLINE
Rm @ Meas. Temp	.420@86F
Rmt @ Meas. Temp	.315@86F
Rmc @ Meas. Temp	.504@86F
Source of Rmf / Rmc	MEASUREMENT
Rm @ BHT	.282@128F
Time Circulation Stopped	5.5 HOURS
Time Logger on Bottom	1:30 P.M.
Maximum Recorded Temperature	128F
Equipment Number	4010
Location	HAYS, KANSAS
Recorded By	JEFF LUEBBERS
Witnessed By	JIM HALL
	TOM DUDGEON

<<< Fold Here >>>

All interpretations are opinions based on inferences from electrical or other measurements and we cannot and do not guarantee the accuracy or correctness of any interpretation, and we shall not, except in the case of gross or willful negligence on our part, be liable or responsible for any loss, costs, damages, or expenses incurred or sustained by anyone resulting from any interpretation made by any of our officers, agents or employees. These interpretations are also subject to our general terms and conditions set out in our current Price Schedule.

Comments

THANK YOU FOR USING SUPERIOR WELL SERVICE HAYS, KANSAS (785) 628-6395
DIRECTIONS
FORD, KS. N. ON HWY 400 TO "SADDLE RD.", 5W. TO "RD. 120", 1S., 1W., 1/2 S. INTO ACROSS FROM
ABANDONED FARM

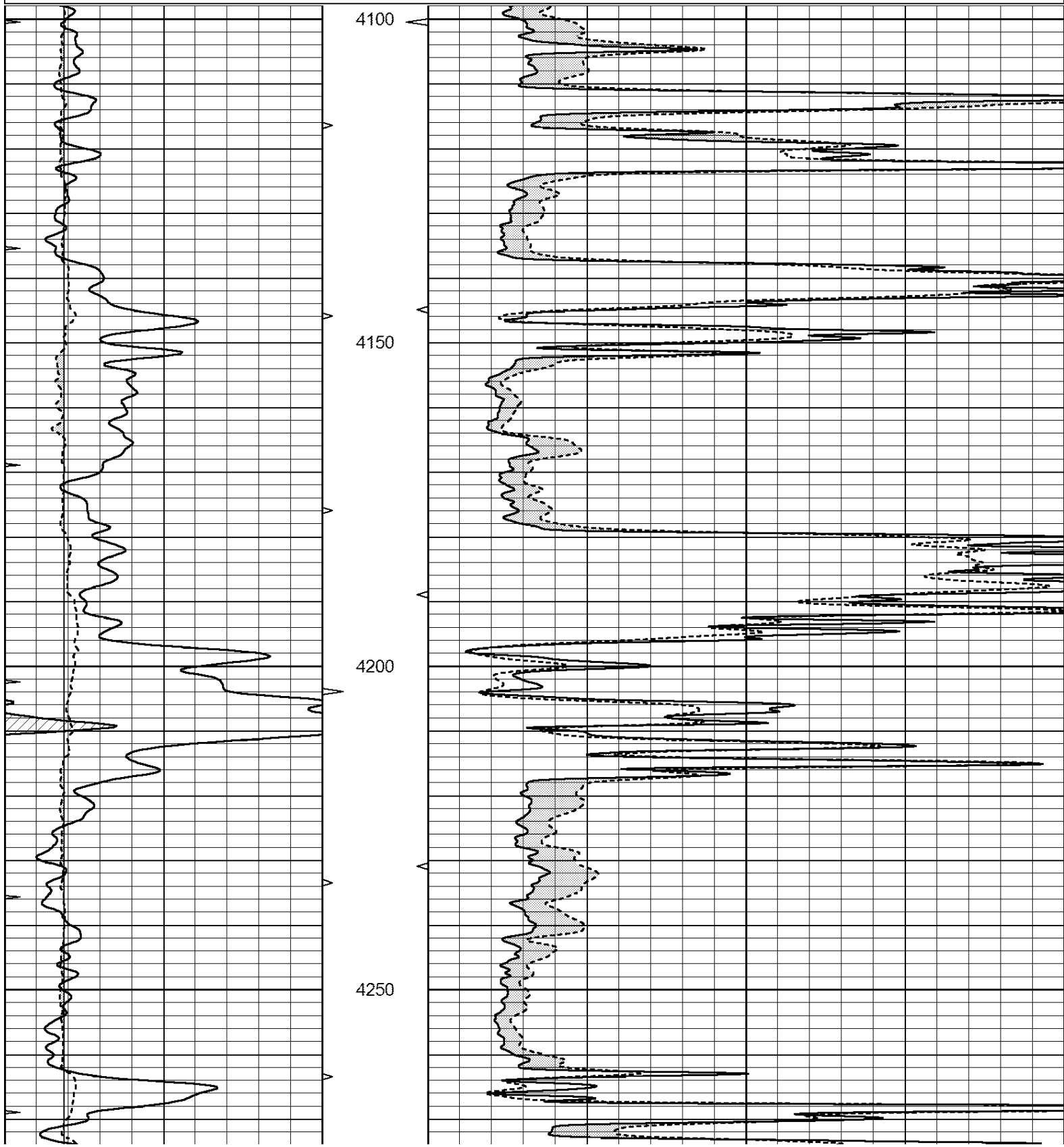


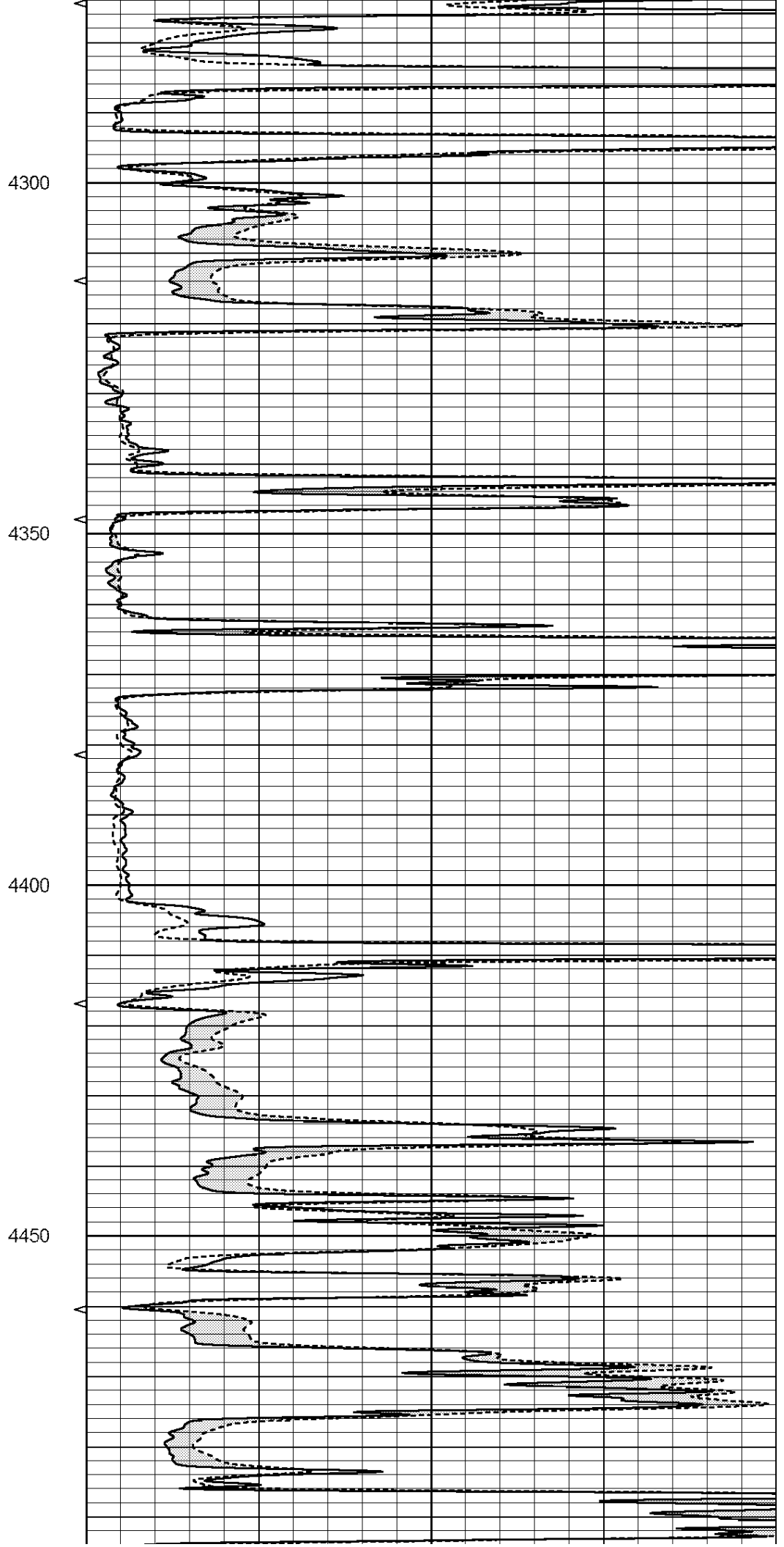
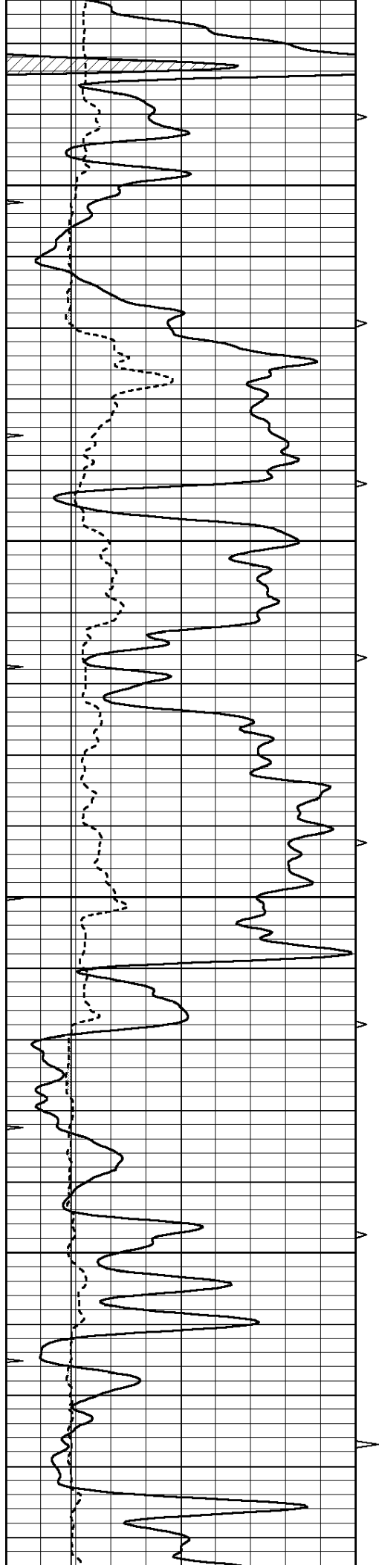
SUPERIOR
Hays,
Kansas

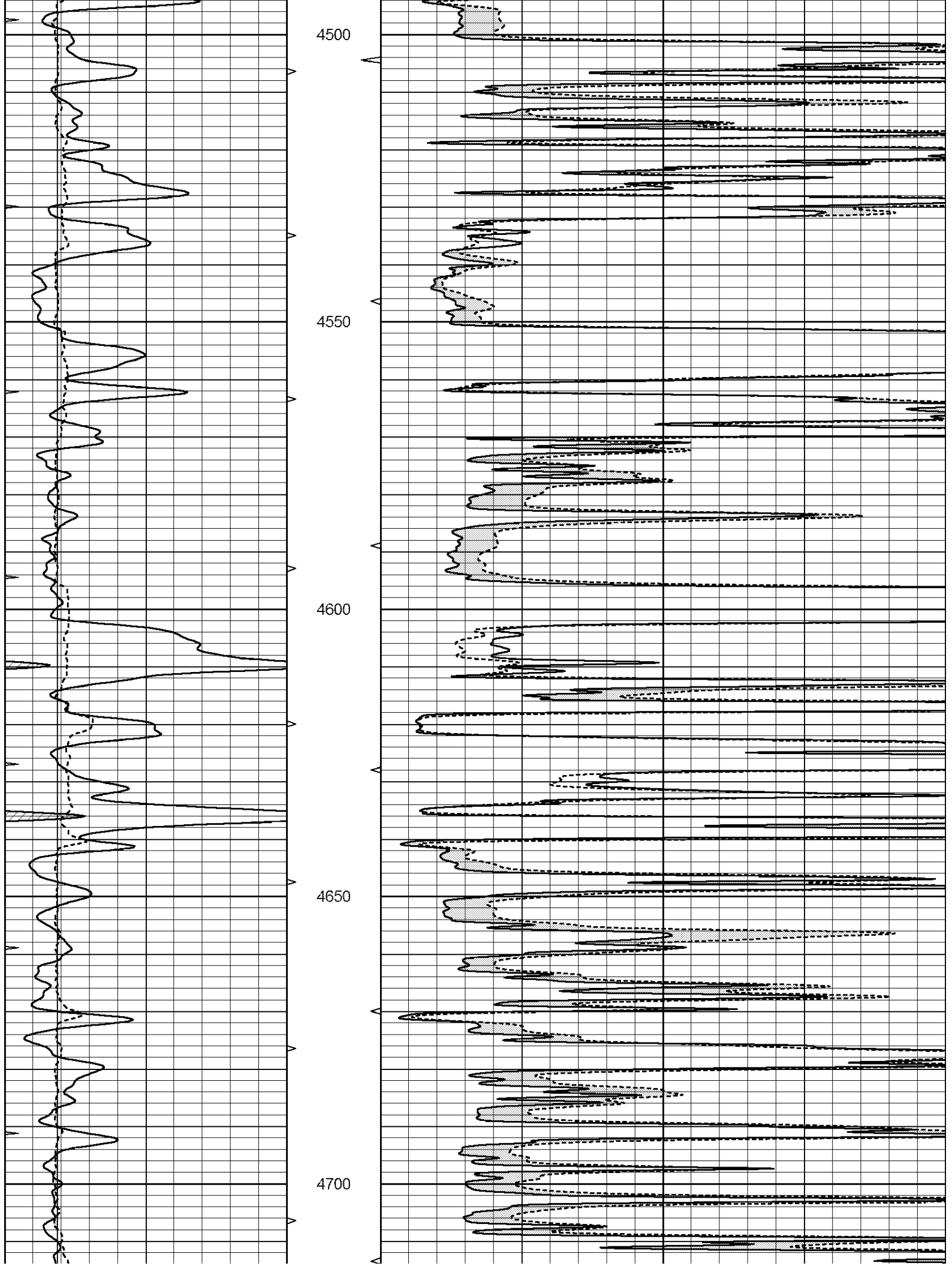
MAIN SECTION

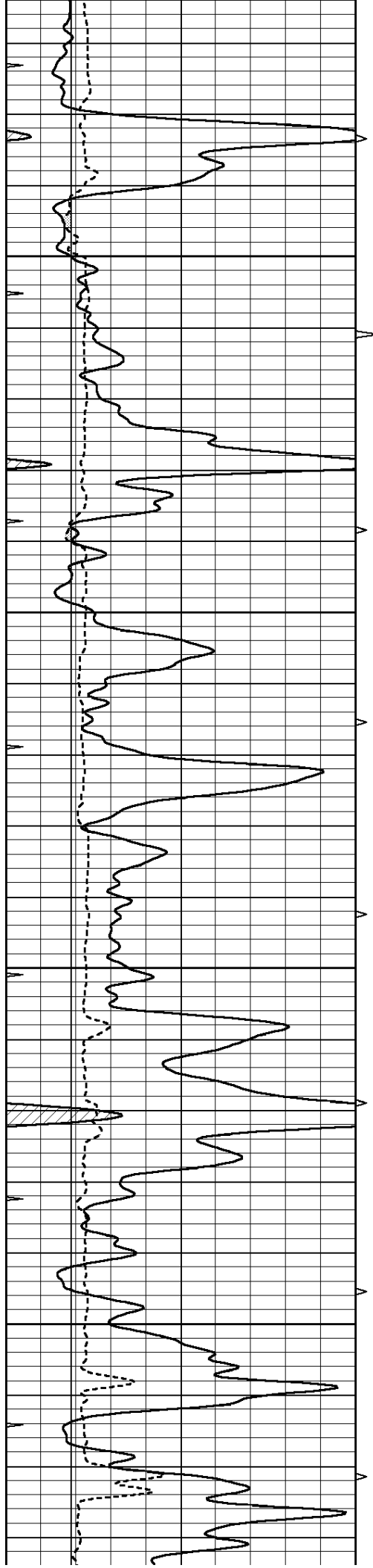
Database File: 008145pe.db
 Dataset Pathname: pass6.6
 Presentation Format: micro
 Dataset Creation: Mon Jan 23 17:28:19 2012 by Calc Open-Cased 110302
 Charted by: Depth in Feet scaled 1:240

0	GAMMA RAY (GAPI)	150	ABHV	0	MEL1.5 (Ohm-m)	40
6	CALIPER (in)	16	10 (ft3)	0	MEL2.0 (Ohm-m)	40
0	MINMK	20	TBHV			
			0 (ft3)	10		







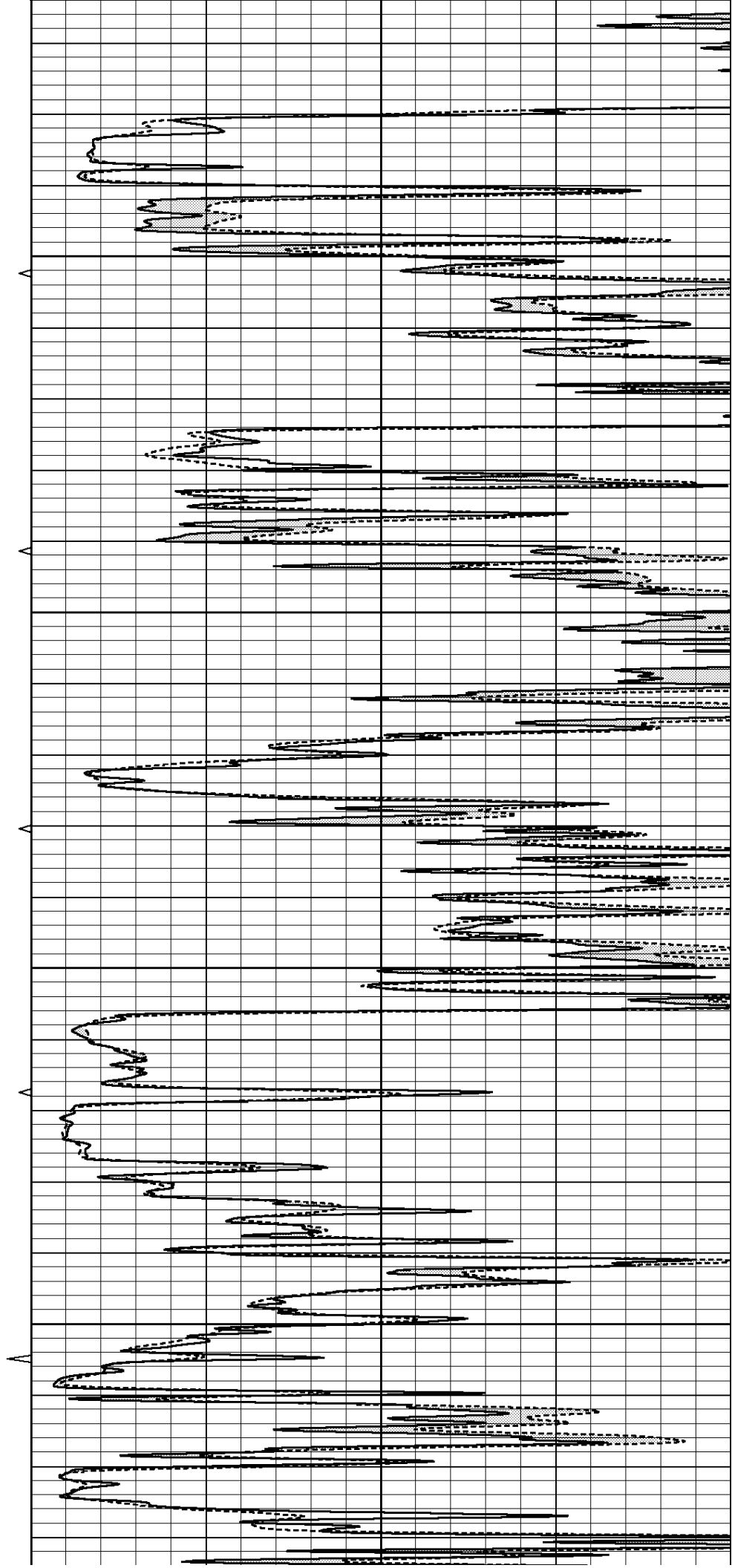


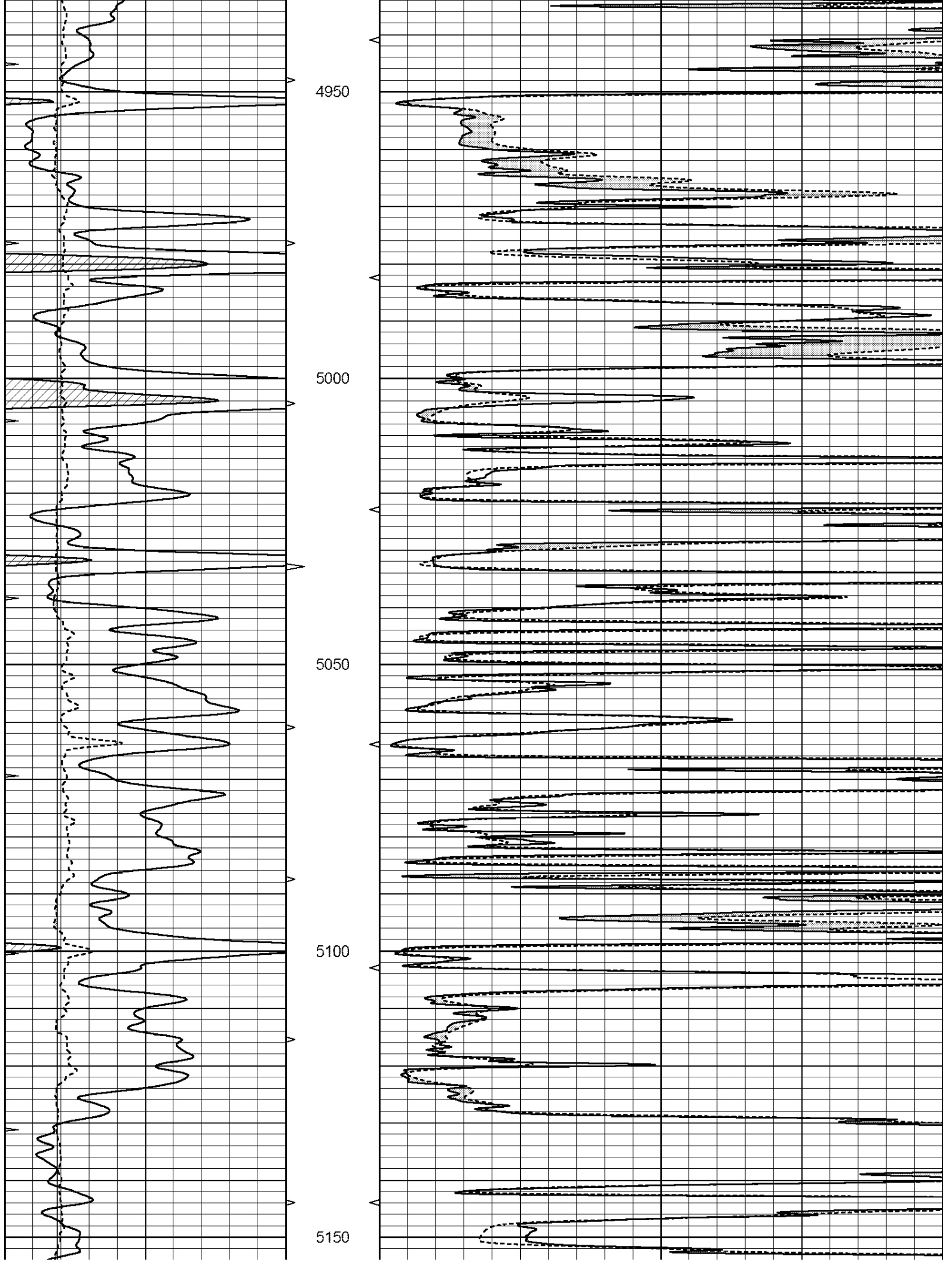
4750

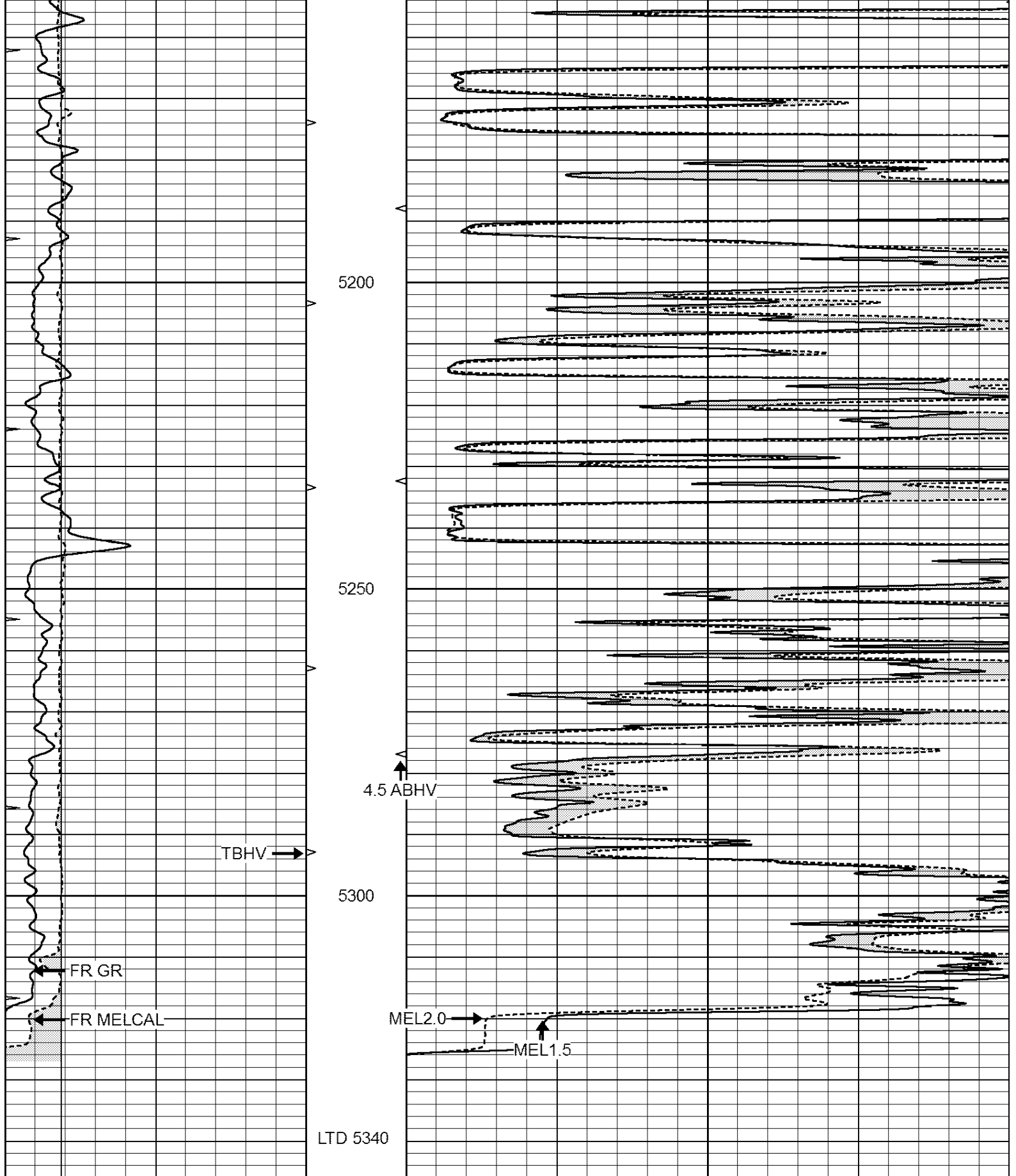
4800

4850

4900







0	GAMMA RAY (GAPI)	150	ABHV	0	MEL1.5 (Ohm-m)	40
6	CALIPER (in)	16	10 (ft3)	0 0	MEL2.0 (Ohm-m)	40
0	MINMK	20	TBHV			
			0 (ft3)	10		

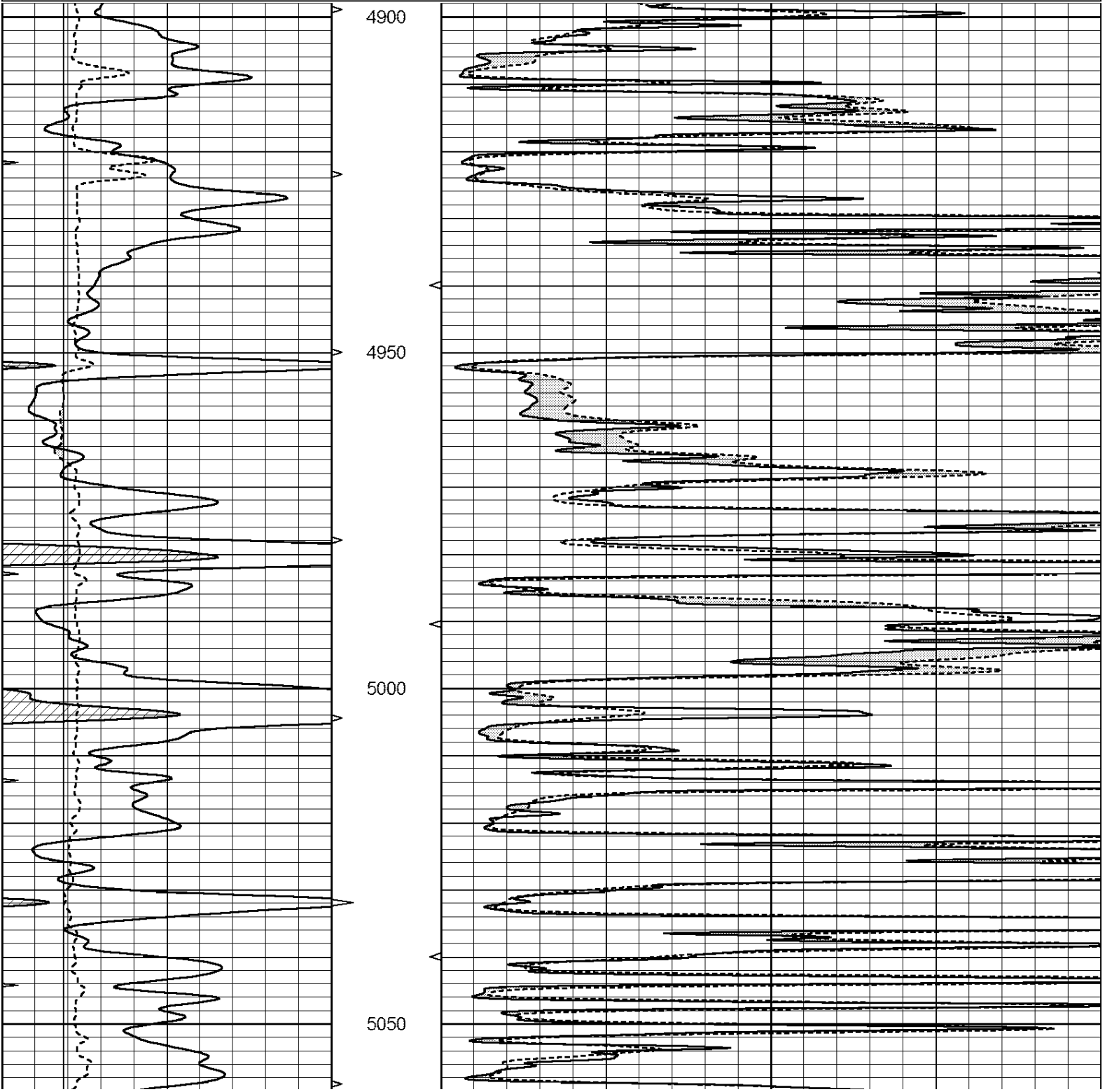


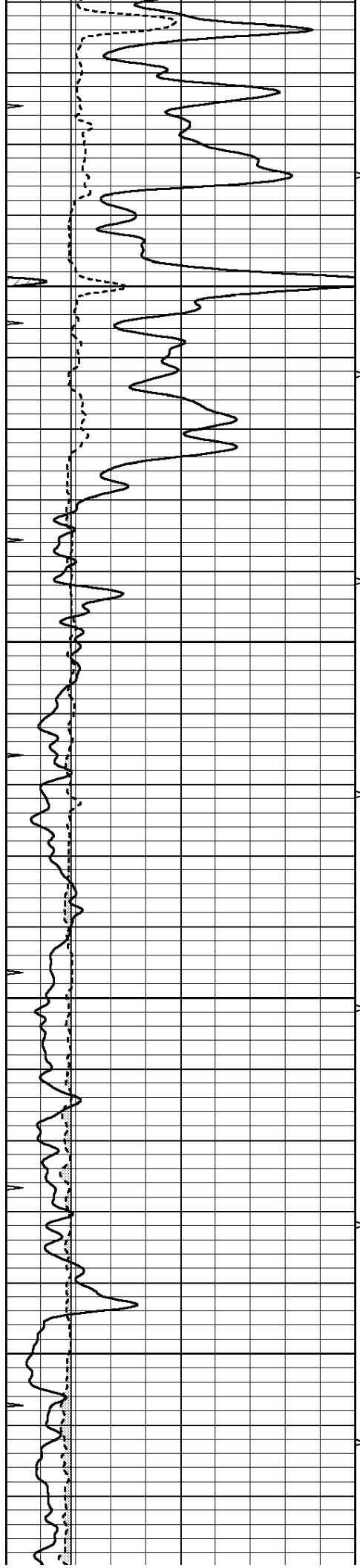
SUPERIOR
Hays,
Kansas

REPEAT SECTION

Database File: 008145pe.db
 Dataset Pathname: pass5.3
 Presentation Format: micro
 Dataset Creation: Mon Jan 23 16:42:41 2012 by Calc Open-Cased 110302
 Charted by: Depth in Feet scaled 1:240

0	GAMMA RAY (GAPI)	150	ABHV	0	MEL1.5 (Ohm-m)	40
6	CALIPER (in)	16	10 (ft3)	0	MEL2.0 (Ohm-m)	40
0	MINMK	20	TBHV			
			0 (ft3)	10		



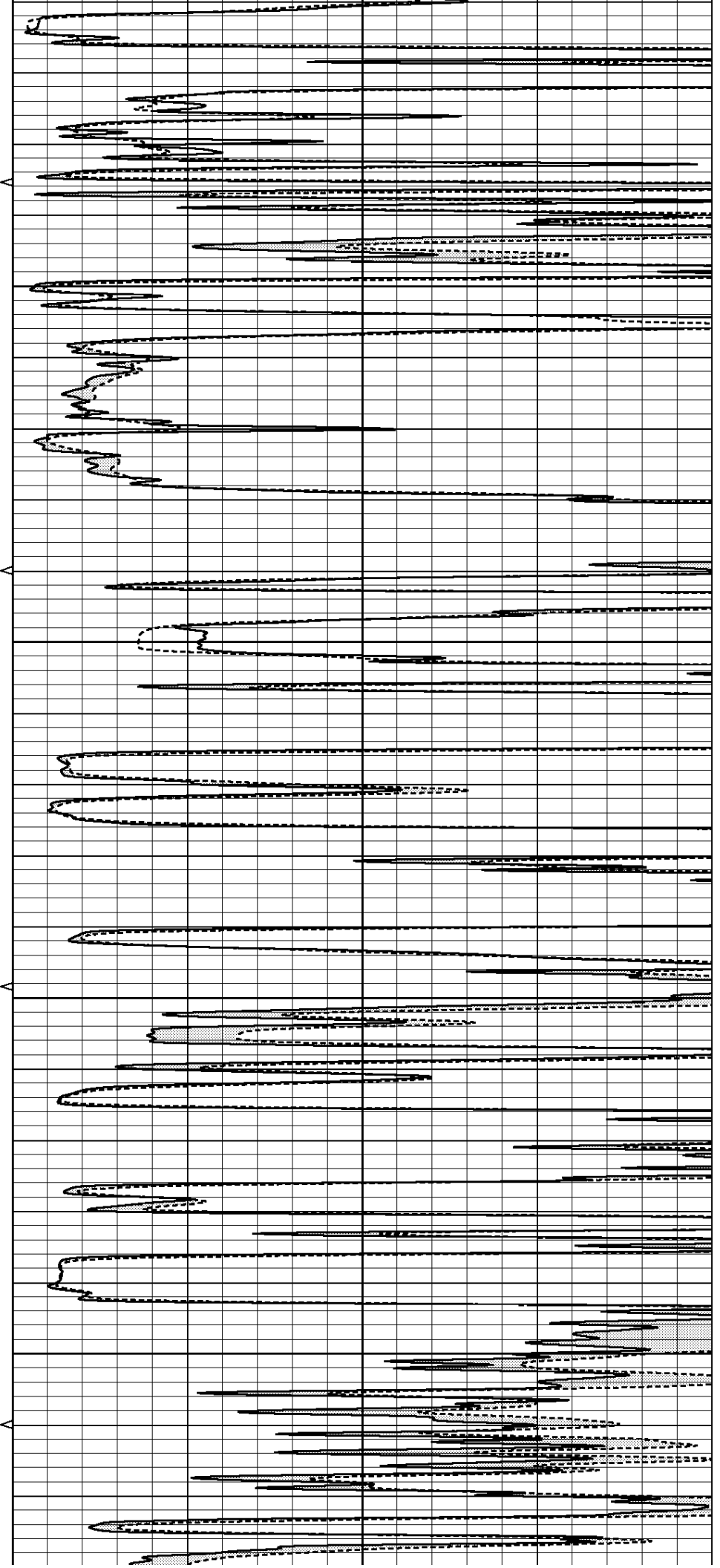


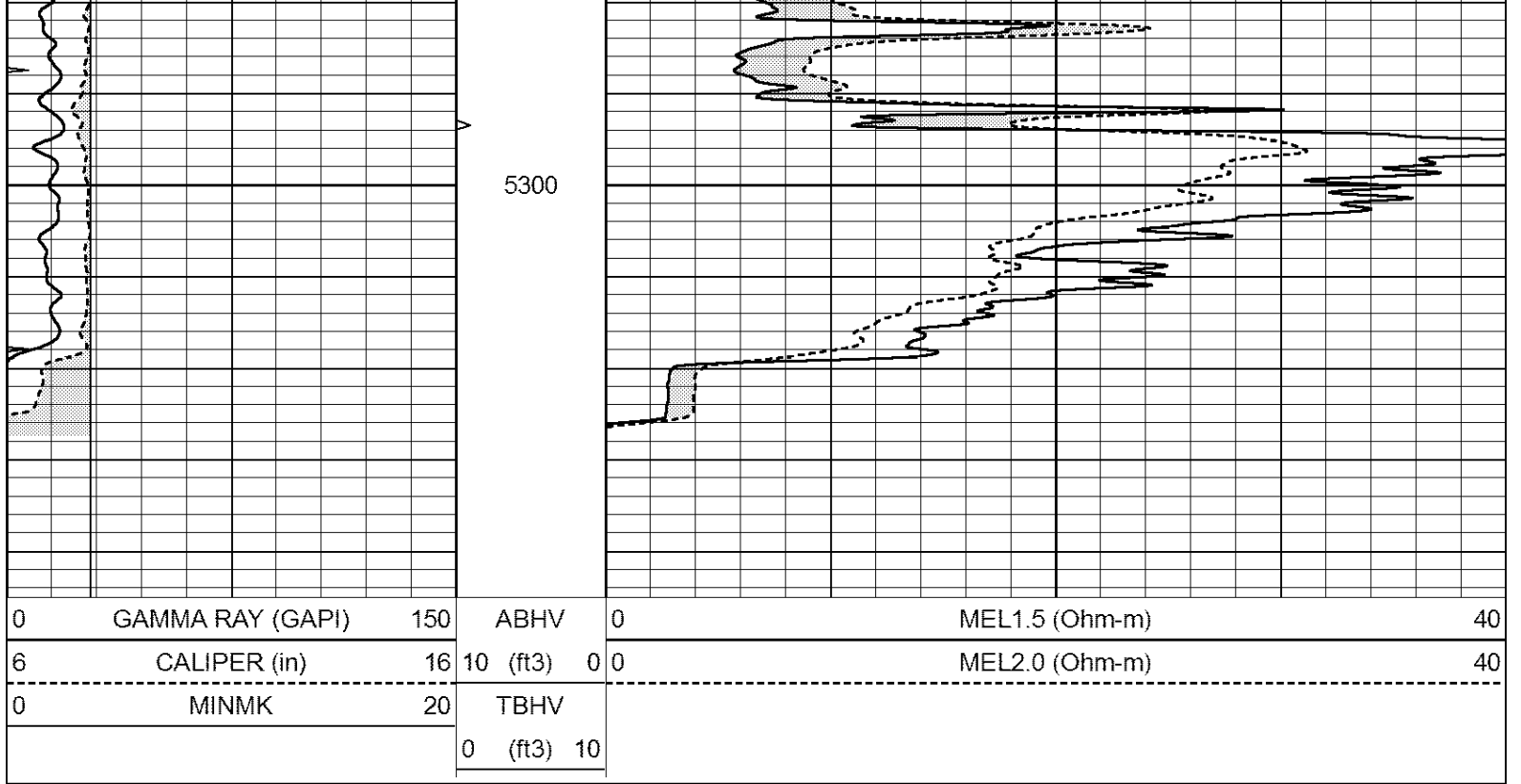
5100

5150

5200

5250





Calibration Report

Database File: 008145pe.db
 Dataset Pathname: pass6.6
 Dataset Creation: Mon Jan 23 17:28:19 2012 by Calc Open-Cased 110302

MICRO Calibration Report

Serial Number:	MICRO5	
Tool Model:	PROBE	
Performed:	Sat Jan 21 01:32:51 2012	
Caliper Calibration:	Gain=3.443	Offset=-3.145
References	Low Cal	High Cal
Readings	7.500	15.000
	3.092	5.270
1.5" Calibration:	Gain=40.000	Offset=-0.300
References	Low Cal	High Cal
Readings	0.000	20.000
	-0.002	0.981
2" Calibration:	Gain=55.000	Offset=-0.700
References	Low Cal	High Cal
Readings	0.000	20.000
	0.002	0.898

Gamma Ray Calibration Report

Serial Number:	GR4	
Tool Model:	OPEN	
Performed:	Sat Jan 21 01:33:01 2012	
Calibrator Value:	200.0	GAPI
Background Reading:	0.0	cps
Calibrator Reading:	189.0	cps

Sensitivity:

1.8000

GAP/cps