



SUPERIOR
Hays,
Kansas

COMPENSATED
DENSITY / NEUTRON
PE LOG

Company VINCENT OIL CORPORATION
Well ZIMMERMAN #1-8
Field WILDCAT
County FORD
State KANSAS

Company	VINCENT OIL CORPORATION	Location:	API # : 15-057-20778-0000	Other Services
Well	ZIMMERMAN #1-8		1880' FNL & 330' FWL	DIL/MEL
Field	WILDCAT		S/2 - NW - SW - NW	SONIC
County	FORD		SEC 8 TWP 28S RGE 23W	Elevation
			GROUND LEVEL	K.B. 2522
			KELLY BUSHING 10' A.G.L.	D.F. 2520
			KELLY BUSHING	G.L. 2512

Date	1/23/12
Run Number	ONE
Depth Driller	5340
Depth Logger	5340
Bottom Logged Interval	5316
Top Log Interval	4100
Casing Driller	8 5/8"@808'
Casing Logger	608
Bit Size	7 7/8"
Type Fluid in Hole	CHEMICAL MUD
Density / Viscosity	8.8/51
pH / Fluid Loss	9.5/7.2
Source of Sample	FLOWLINE
Rm @ Meas. Temp	.420@86F
Rmt @ Meas. Temp	.315@86F
Rmc @ Meas. Temp	.504@86F
Source of Rmf / Rmc	MEASUREMENT
Rm @ BHT	.282@128F
Time Circulation Stopped	3 HOURS
Time Logger on Bottom	1:30 P.M.
Maximum Recorded Temperature	128F
Equipment Number	4010
Location	HAYS, KANSAS
Recorded By	JEFF LUEBBERS
Witnessed By	JIM HALL

<<< Fold Here >>>

All interpretations are opinions based on inferences from electrical or other measurements and we cannot and do not guarantee the accuracy or correctness of any interpretation, and we shall not, except in the case of gross or willful negligence on our part, be liable or responsible for any loss, costs, damages, or expenses incurred or sustained by anyone resulting from any interpretation made by any of our officers, agents or employees. These interpretations are also subject to our general terms and conditions set out in our current Price Schedule.

Comments

THANK YOU FOR USING SUPERIOR WELL SERVICE HAYS, KANSAS (785) 628-6395
 DIRECTIONS
 FORD, KS. N. ON HWY 400 TO "SADDLE RD.", 5W. TO "RD. 120", 1S., 1W., 1/2 S. INTO ACROSS FROM
 ABANDONED FARM

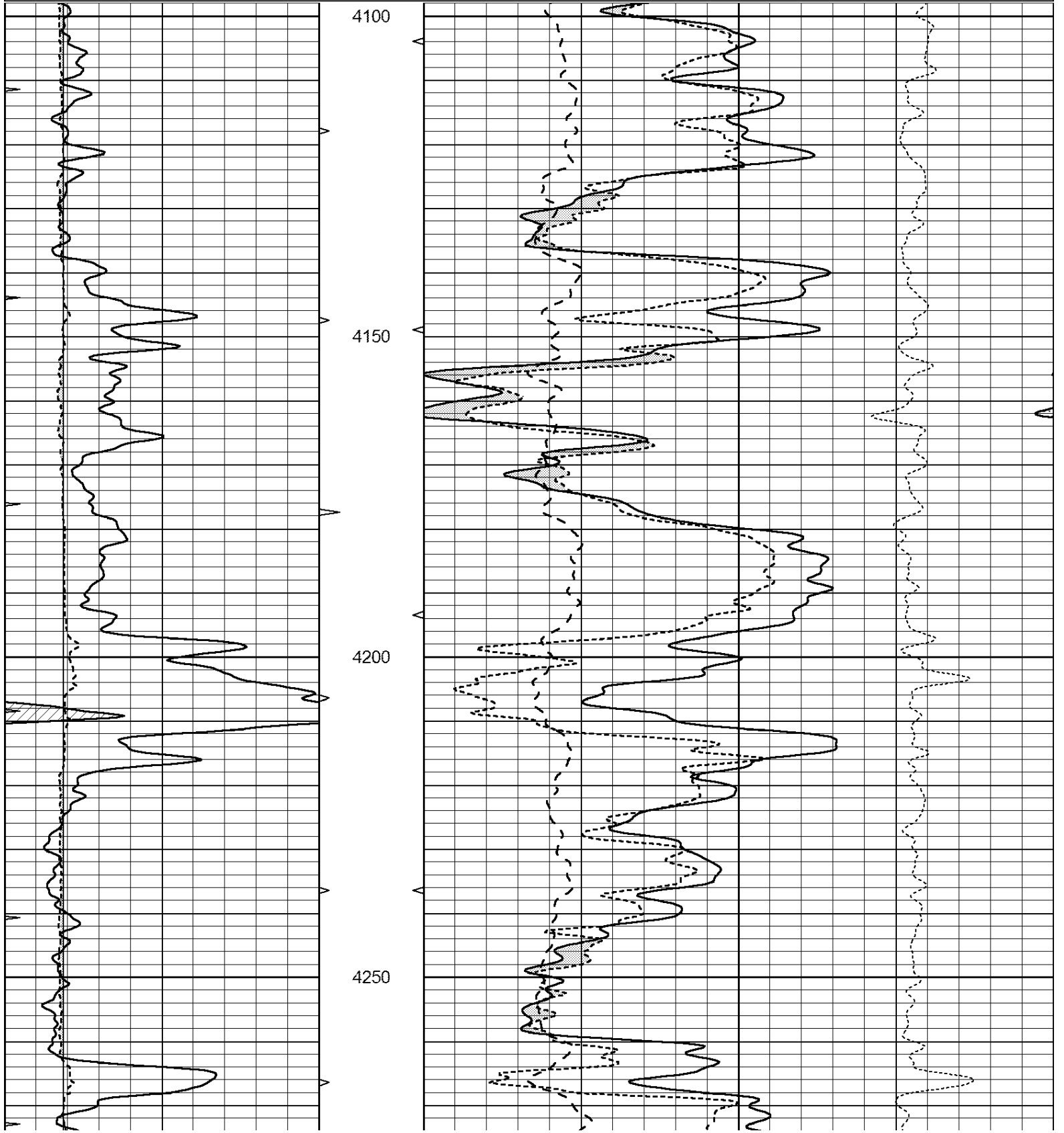


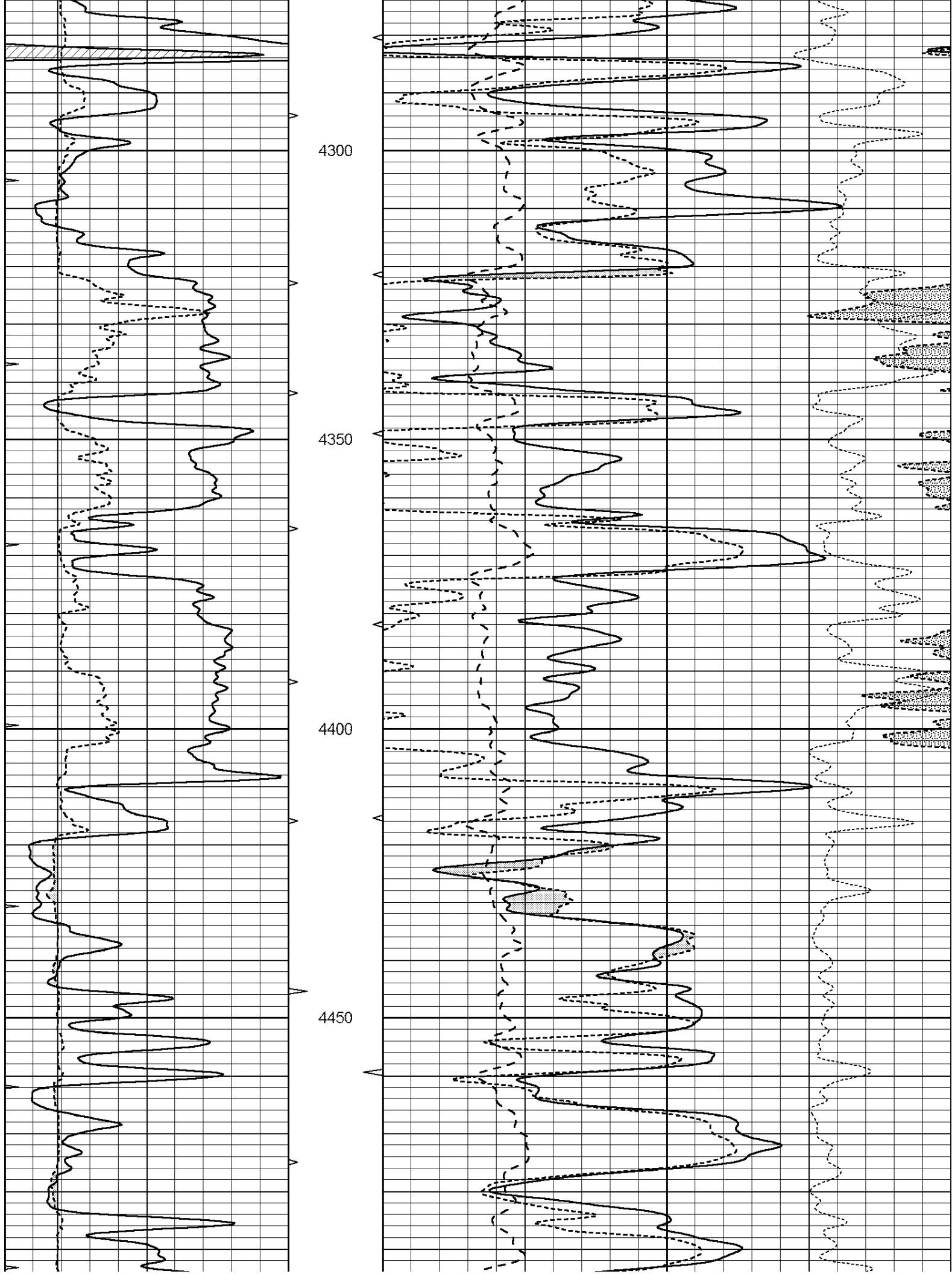
SUPERIOR
Hays,
Kansas

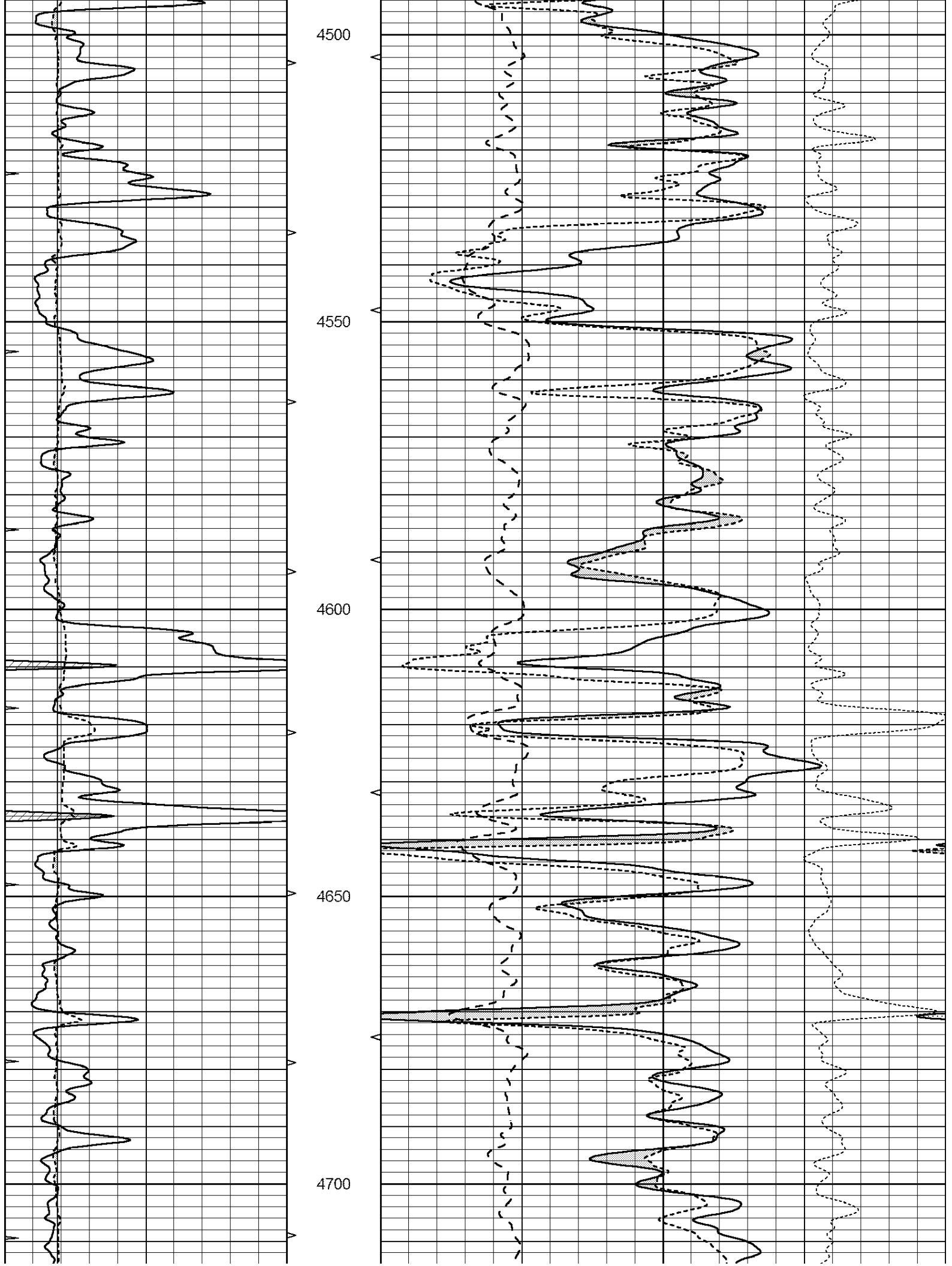
MAIN SECTION

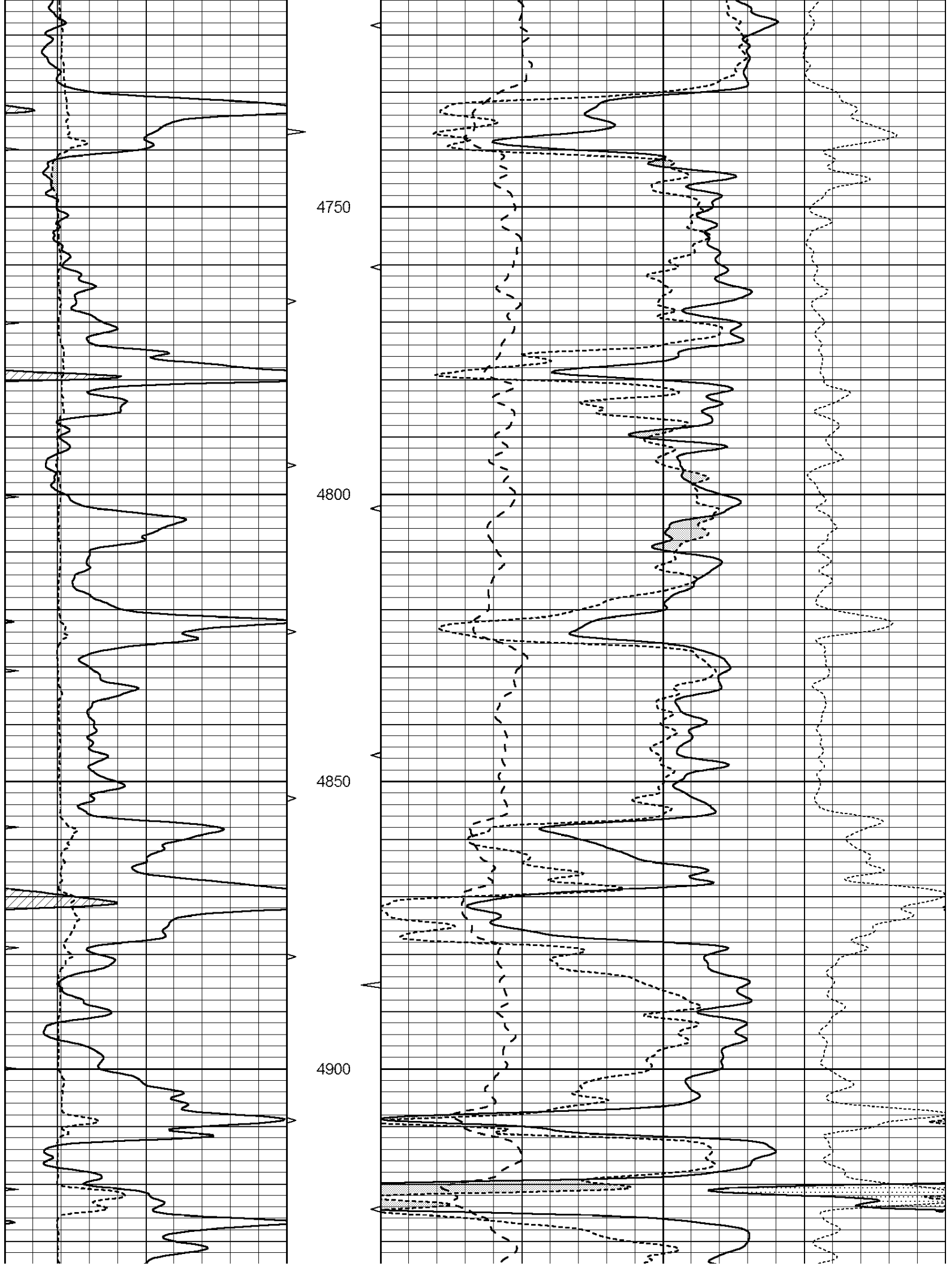
Database File: 008145pe.db
 Dataset Pathname: pass3.10
 Presentation Format: ldt_neu
 Dataset Creation: Mon Jan 23 15:31:49 2012
 Charted by: Depth in Feet scaled 1:240

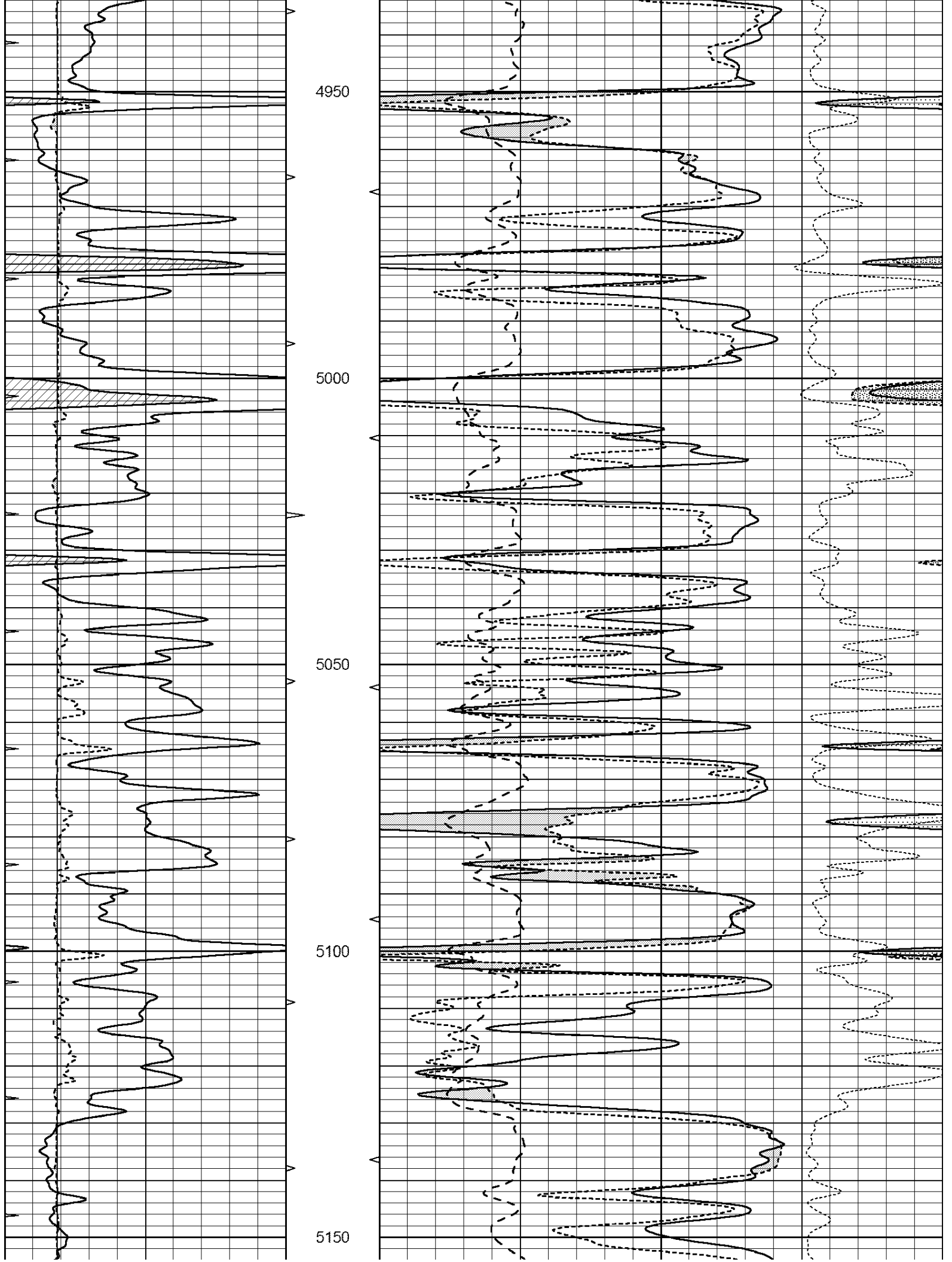
0	GAMMA RAY (GAPI)	150	ABHV	30	COMPENSATED DENSITY (pu)	-10			
6	CALIPER (in)	16	10 (ft3)	0	30	COMPENSATED NEUTRON (pu)	-10		
0	MINMK	20	TBHV	0	10	PE	-0.25	CORRECTION (g/cc)	0.25
			0 (ft3)	10					

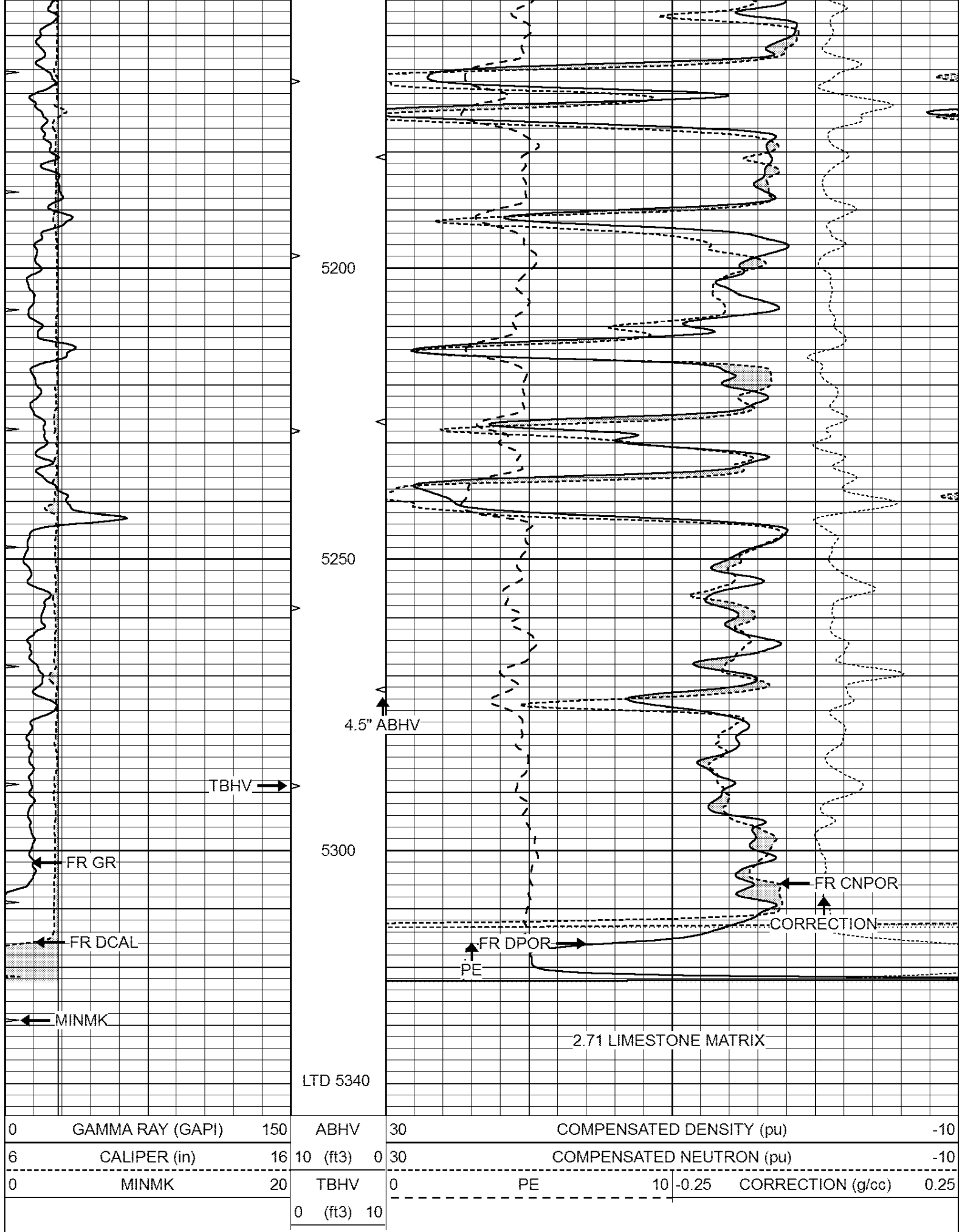












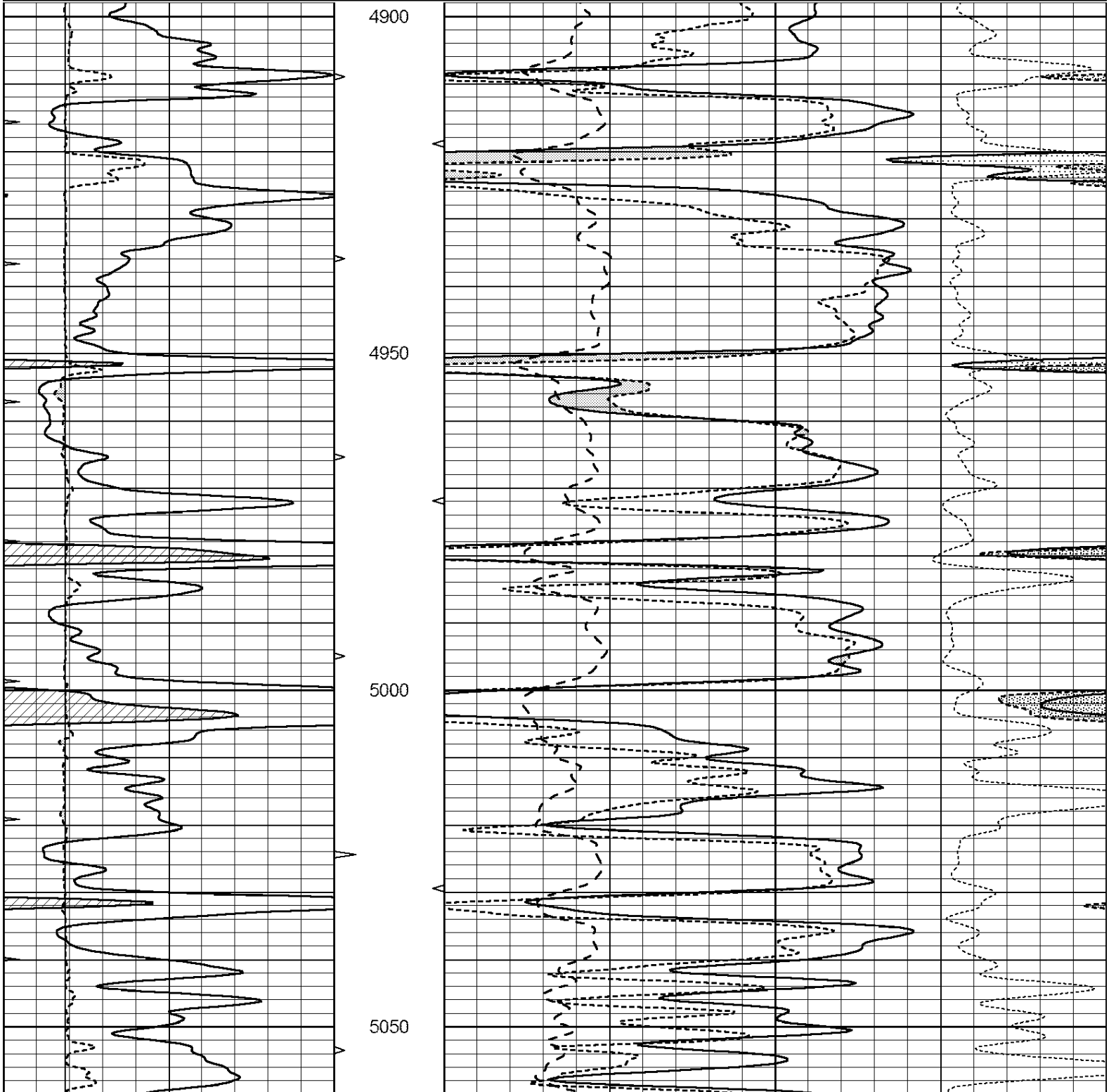


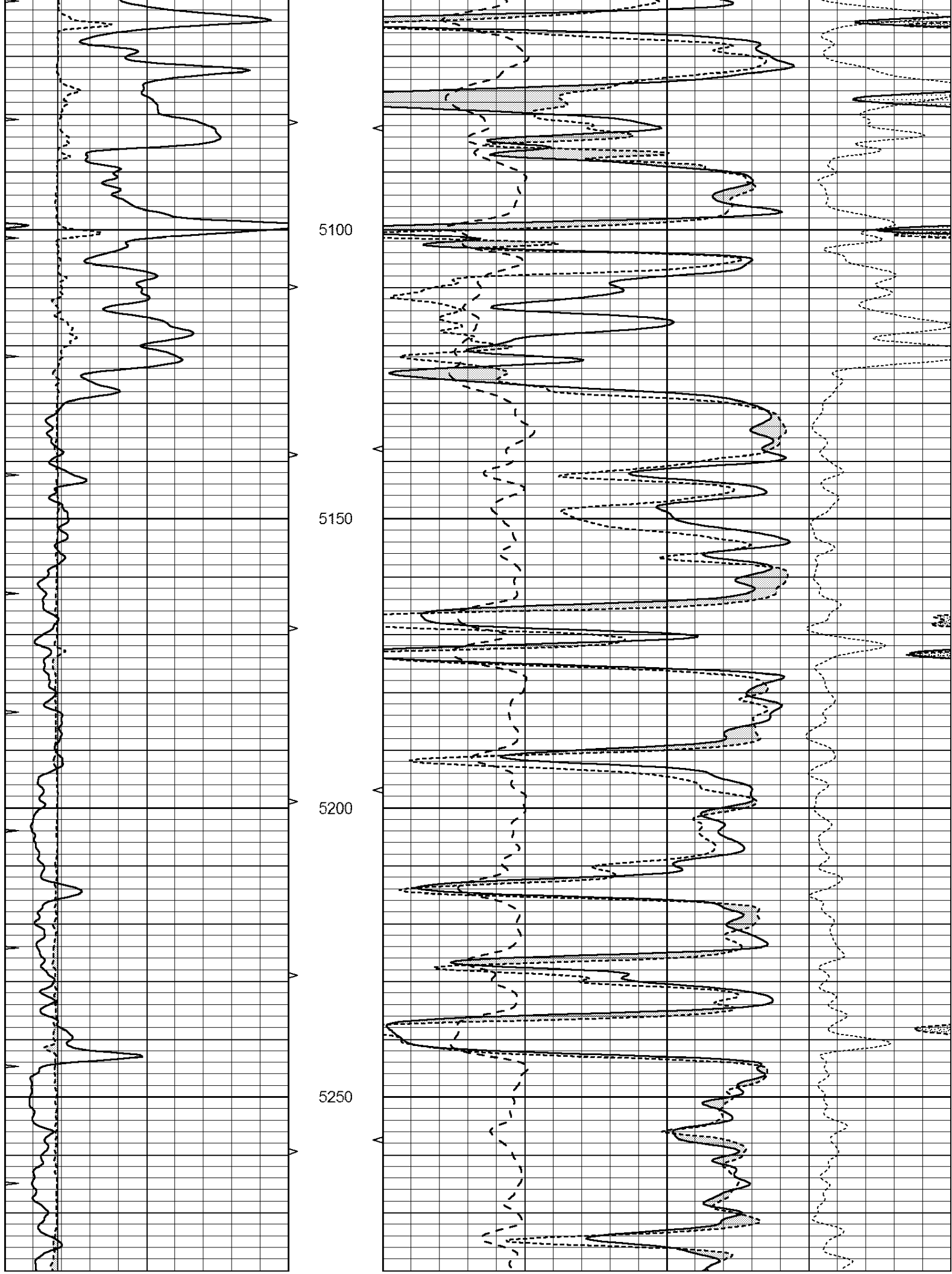
SUPERIOR
Hays,
Kansas

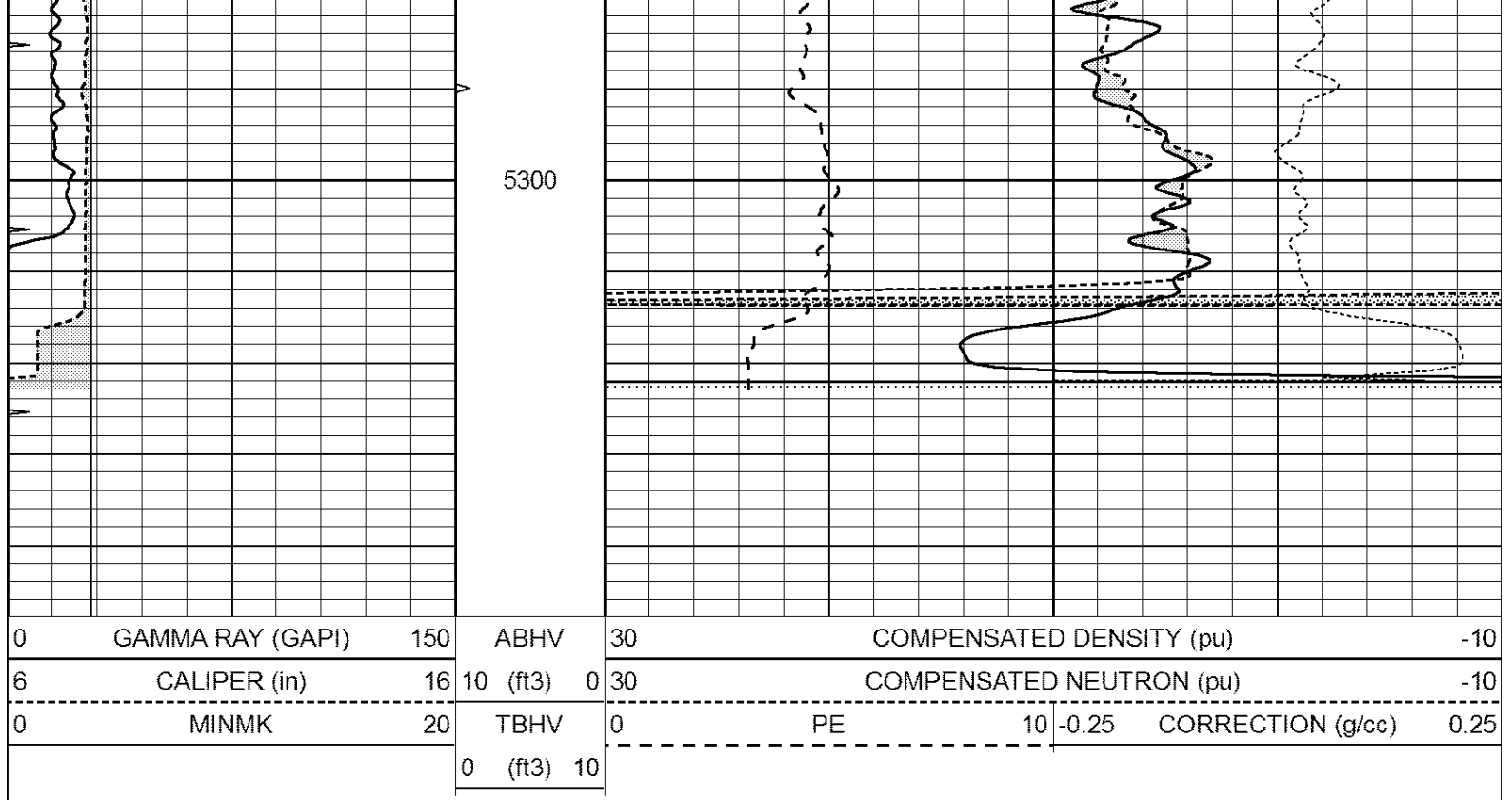
REPEAT SECTION

Database File: 008145pe.db
 Dataset Pathname: pass2.5
 Presentation Format: ldt_neu
 Dataset Creation: Mon Jan 23 14:16:03 2012
 Charted by: Depth in Feet scaled 1:240

0	GAMMA RAY (GAPI)	150	ABHV	30	COMPENSATED DENSITY (pu)	-10
6	CALIPER (in)	16	10 (ft3)	0	COMPENSATED NEUTRON (pu)	-10
0	MINMK	20	TBHV	0	PE	10 -0.25 CORRECTION (g/cc) 0.25
			0 (ft3)	10		







Calibration Report

Database File: 008145pe.db
 Dataset Pathname: pass3.10
 Dataset Creation: Mon Jan 23 15:31:49 2012

Dual Induction Calibration Report

Serial-Model: DIL3-GEAR
 Performed: Mon Jan 23 12:20:15 2012

Loop:	Readings				References			Results	
	Air	Loop			Air	Loop		m	b
Deep	0.011	0.656	V	0.000	400.000	mmho/m	640.000	7.000	
Medium	0.013	0.740	V	0.000	462.500	mmho/m	700.000	-7.000	
Internal:	Zero	Cal		Zero	Cal		m	b	
Deep	0.002	0.645	V	0.000	400.000	mmho/m	622.059	-1.071	
Medium	0.007	0.740	V	0.000	462.500	mmho/m	631.393	-4.555	

Litho Density Calibration Report

Serial: 006 Model: PRB
 Performed Sun Aug 15 09:48:41 2010

Litho Density Calibration

	Background	Magnesium	Aluminum	Sandstone	
Window 1	1686.6	11612.8	3932.0	12718.8	cps
Window 2	1531.4	9204.7	3267.8	9851.9	cps
Window 3	1198.3	4733.6	1952.5	4920.6	cps
Window 4	317.3	321.2	325.9	303.6	cps
Long Space	0.0	7673.3	1736.4	8320.4	cps
Short Space	1.7	2548.5	1657.2	2628.8	cps
Rho		1.7100	2.5900	1.3800	g/cc
Pe			2.5700	1.5500	

Bib Angle: 43.8 Bib Slope: 0.061 Density/Spine Ratio: 0.560

Rib Angle	: 45.8	Rib Slope	: 0.901	Density/Spine Ratio	: 0.509
Spine Angle	: 73.8	Spine Slope	: 3.453	Spine Intercept	: -18.1

Caliper				
Low Ref	Readings	Reference		
High Ref	4.0	8.3		
	5.9	15.0		
	Gain: 3.5		Offset: -5.5	

Compensated Neutron Calibration Report

Serial Number: 070808
 Tool Model: Probe

PRE-SURVEY VERIFICATION

Detector	Readings	Measured	Target
Short Space	cps		
Long Space	cps	pu	pu

POST-SURVEY VERIFICATION

Detector	Readings	Measured	Target
Short Space	cps		
Long Space	cps	pu	pu

Gamma Ray Calibration Report

Serial Number:	070559	
Tool Model:	OPEN_GR	
Performed:	Mon Jan 23 12:19:35 2012	
Calibrator Value:	1.0	GAPI
Background Reading:	0.0	cps
Calibrator Reading:	1.0	cps
Sensitivity:	0.2800	GAPI/cps