



SUPERIOR
Hays,
Kansas

MICRO
LOG

Company HERMAN L. LOEB, LLC.
Well STOSKOPF #4-28
Field TRAPP
County BARTON
State KANSAS

Company HERMAN L. LOEB, LLC.
Well STOSKOPF #4-28
Field TRAPP
County BARTON
State KANSAS

Location: API # : 15-009-25692-0000
2225' FNL & 2290' FEL
NE - SW - SW - NE
SEC 28 TWP 17S RGE 13W
Permanent Datum GROUND LEVEL Elevation 1962
Log Measured From KELLY BUSHING 9' A.G.L.
Drilling Measured From KELLY BUSHING
Other Services
CDL/CNL
DIL/SONIC
Elevation
K.B. 1971
D.F. 1969
G.L. 1962

Date	5/29/12		
Run Number	TWO		
Depth Driller	3500		
Depth Logger	3500		
Bottom Logged Interval	3478		
Top Log Interval	2700		
Casing Driller	8 5/8" @ 918'		
Casing Logger	918		
Bit Size	7 7/8"		
Type Fluid in Hole	CHEMICAL MUD	CHLORIDES 5,500 PPM	
Density / Viscosity	9.4/49		
pH / Fluid Loss	10.5/10.0		
Source of Sample	FLOWLINE		
Rm @ Meas. Temp	1.50 @ 76F		
Rmt @ Meas. Temp	1.13 @ 76F		
Rmc @ Meas. Temp	1.80 @ 76F		
Source of Rmf / Rmc	MEASUREMENT		
Rm @ BHT	1.02 @ 112F		
Time Circulation Stopped	3.5 HOURS		
Time Logger on Bottom	7:30 A.M.		
Maximum Recorded Temperature	112F		
Equipment Number	4010		
Location	HAYS, KANSAS		
Recorded By	JEFF LUEBBERS		
Witnessed By	KURT TALBOTT		

<<< Fold Here >>>

All interpretations are opinions based on inferences from electrical or other measurements and we cannot and do not guarantee the accuracy or correctness of any interpretation, and we shall not, except in the case of gross or willful negligence on our part, be liable or responsible for any loss, costs, damages, or expenses incurred or sustained by anyone resulting from any interpretation made by any of our officers, agents or employees. These interpretations are also subject to our general terms and conditions set out in our current Price Schedule.

Comments

THANK YOU FOR USING SUPERIOR WELL SERVICE HAYS, KANSAS (785) 628-6395
DIRECTIONS
HOISINGTON, KS. 1 3/4N. OF DAIRY QUEEN ON BLKTOP, 1/2 E. INTO @ CATTLE GUARD

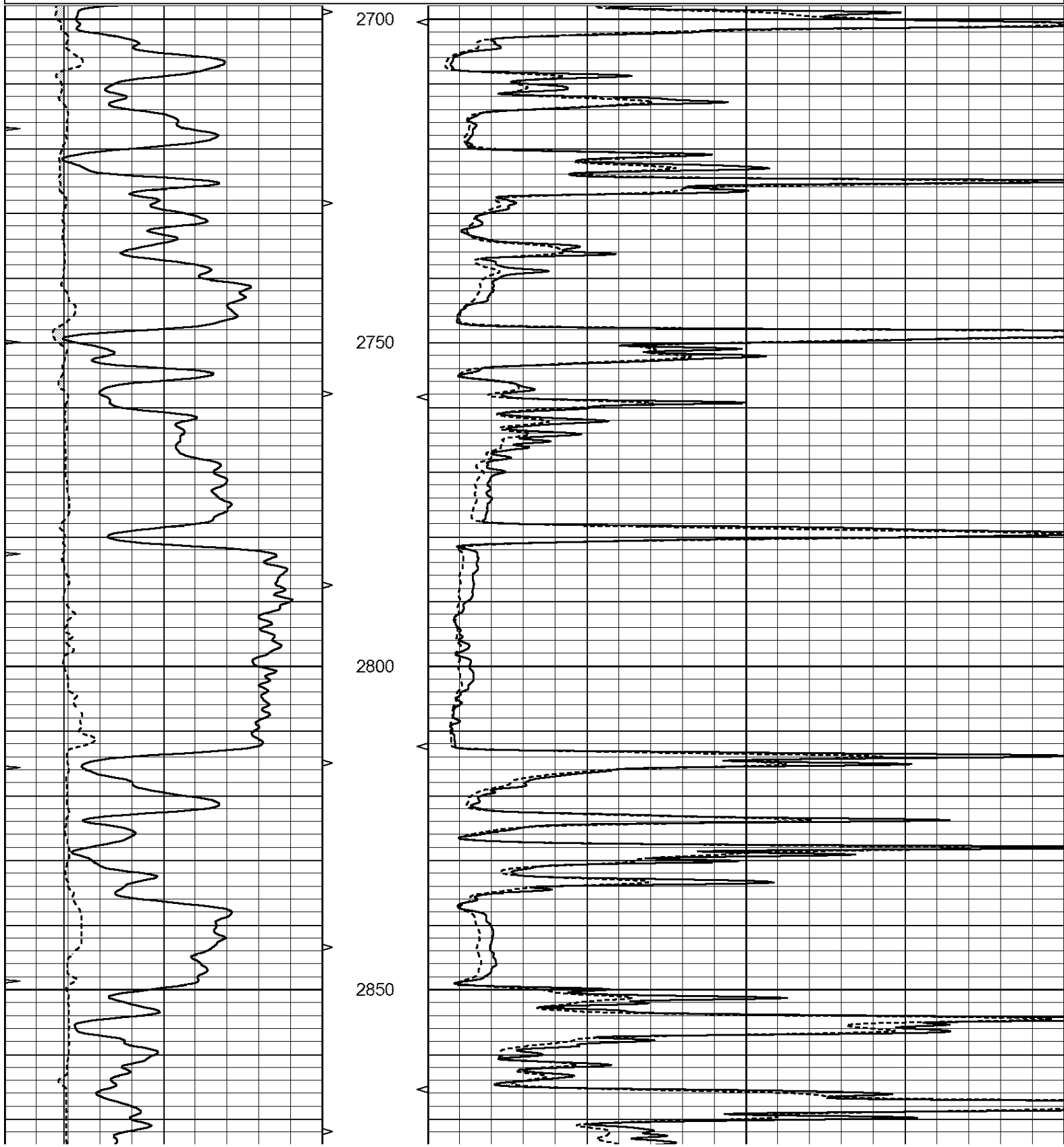


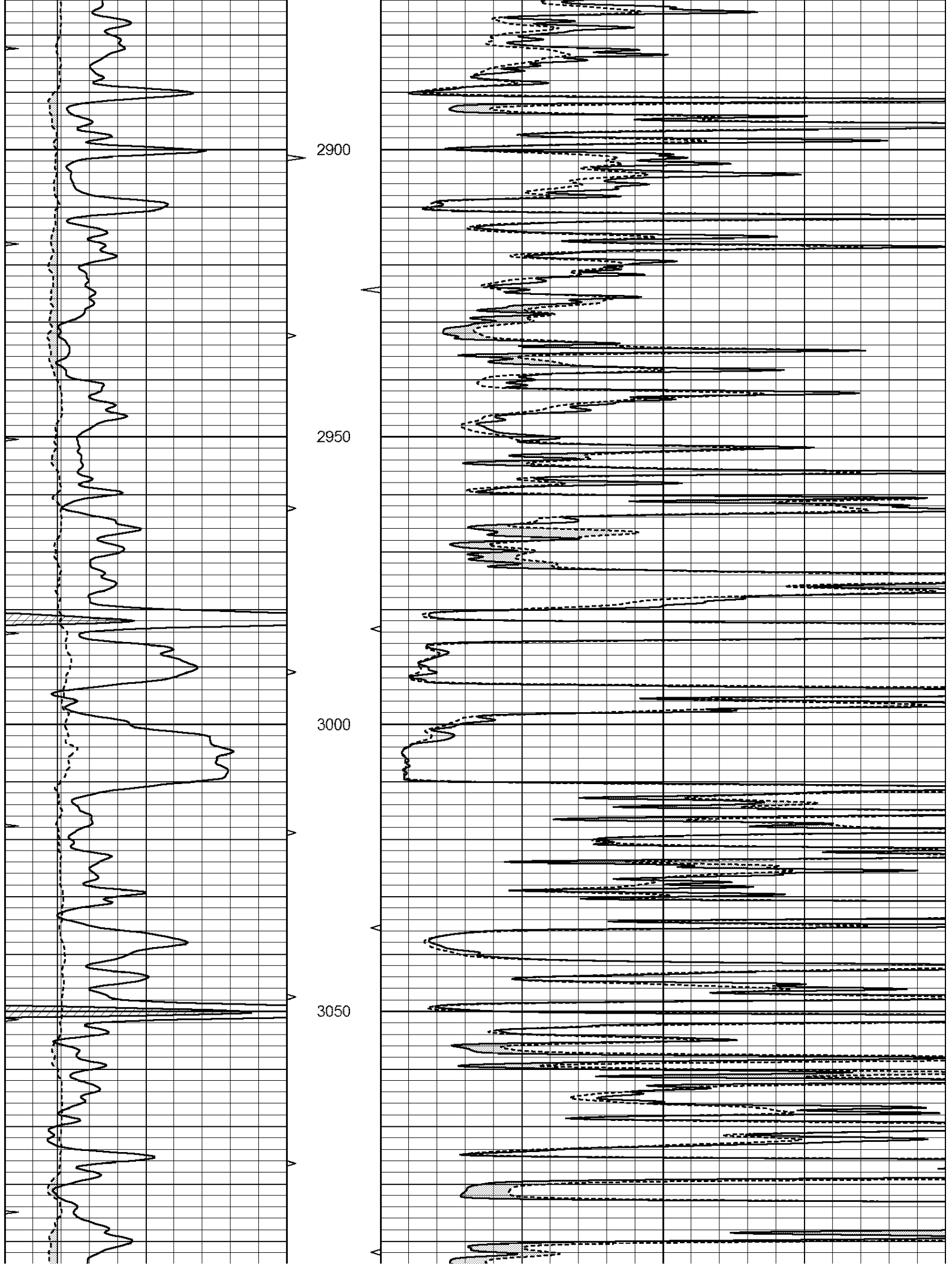
SUPERIOR
Hays,
Kansas

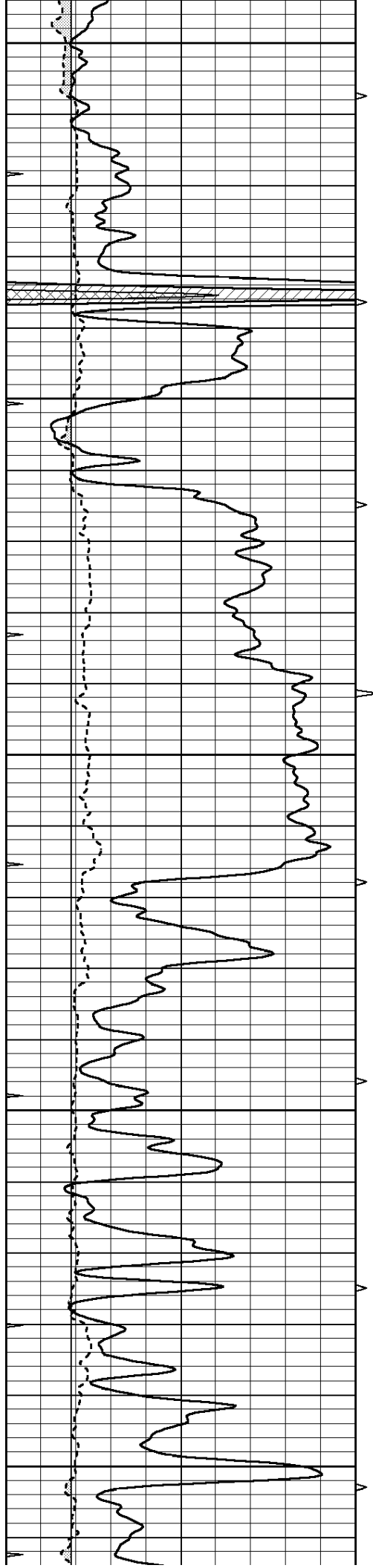
MAIN SECTION

Database File: 409127ddn.db
 Dataset Pathname: pass7.3
 Presentation Format: micro
 Dataset Creation: Tue May 29 10:26:55 2012
 Charted by: Depth in Feet scaled 1:240

0	GAMMA RAY (GAPI)	150	ABHV	0	MEL1.5 (Ohm-m)	40
6	CALIPER (in)	16	10 (ft3)	0	MEL2.0 (Ohm-m)	40
0	MINMK	20	TBHV			
			0 (ft3)	10		







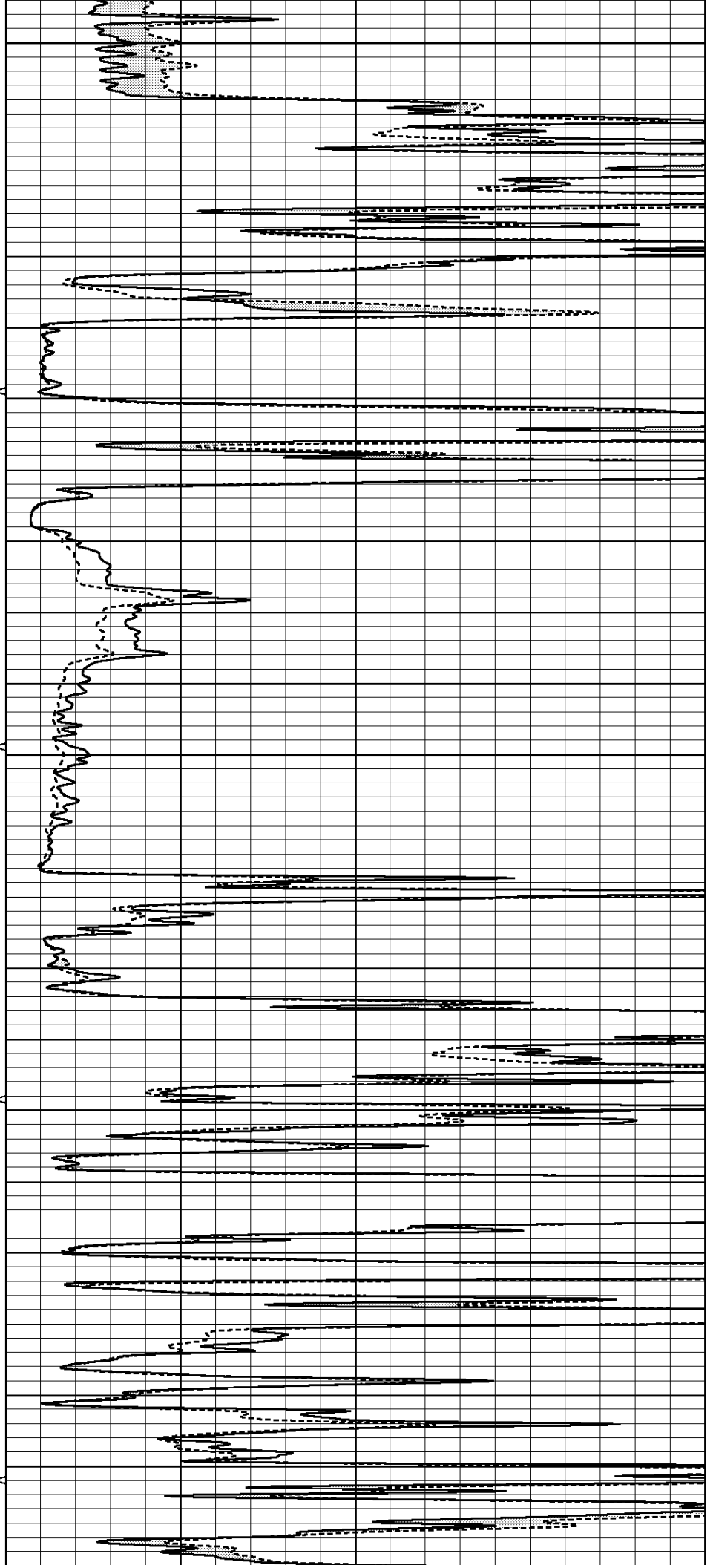
3100

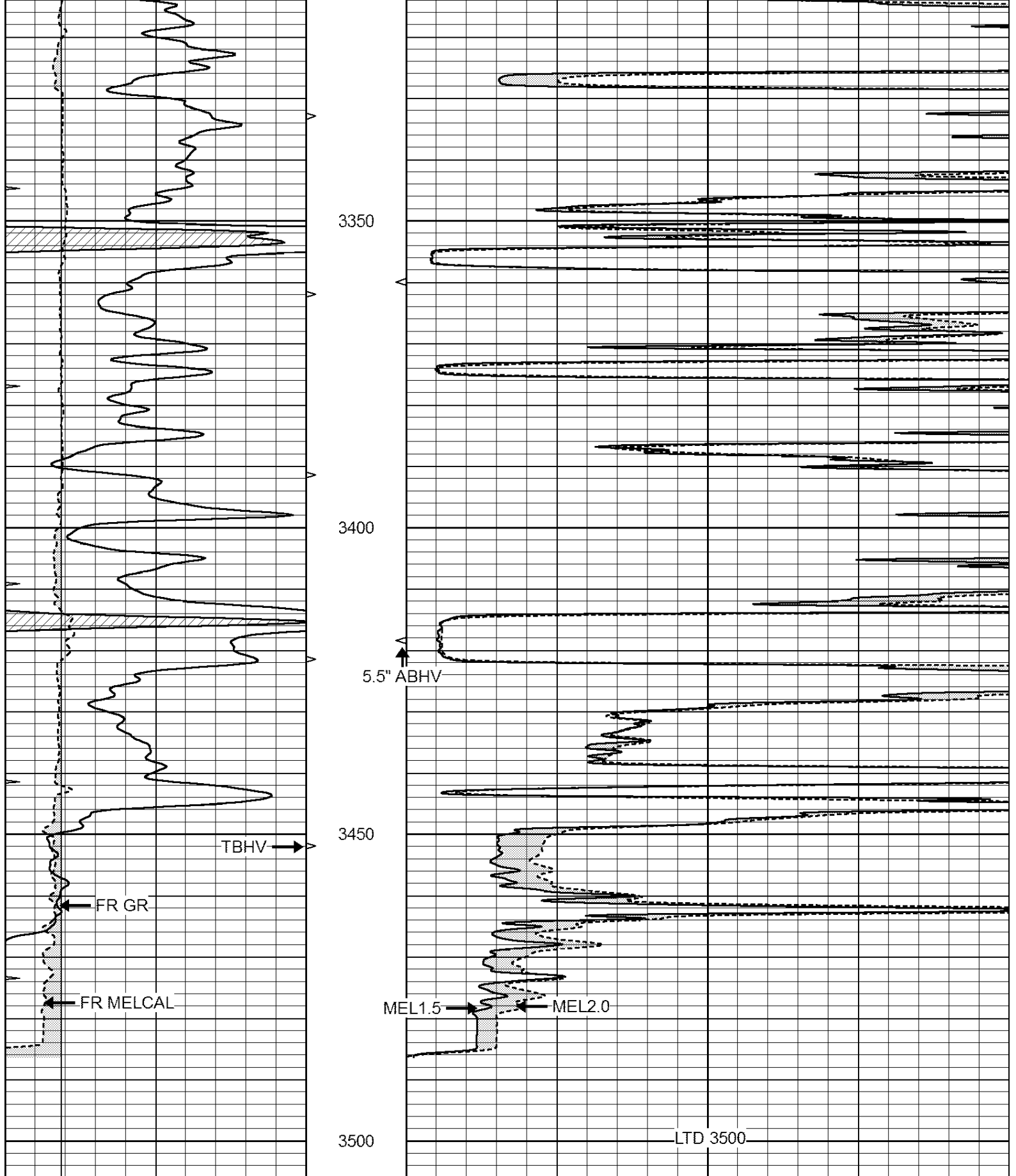
3150

3200

3250

3300





0	GAMMA RAY (GAPI)	150	ABHV	0	MEL1.5 (Ohm-m)	40
6	CALIPER (in)	16	10 (ft3)	0 0	MEL2.0 (Ohm-m)	40
0	MINMK	20	TBHV			
			0 (ft3)	10		

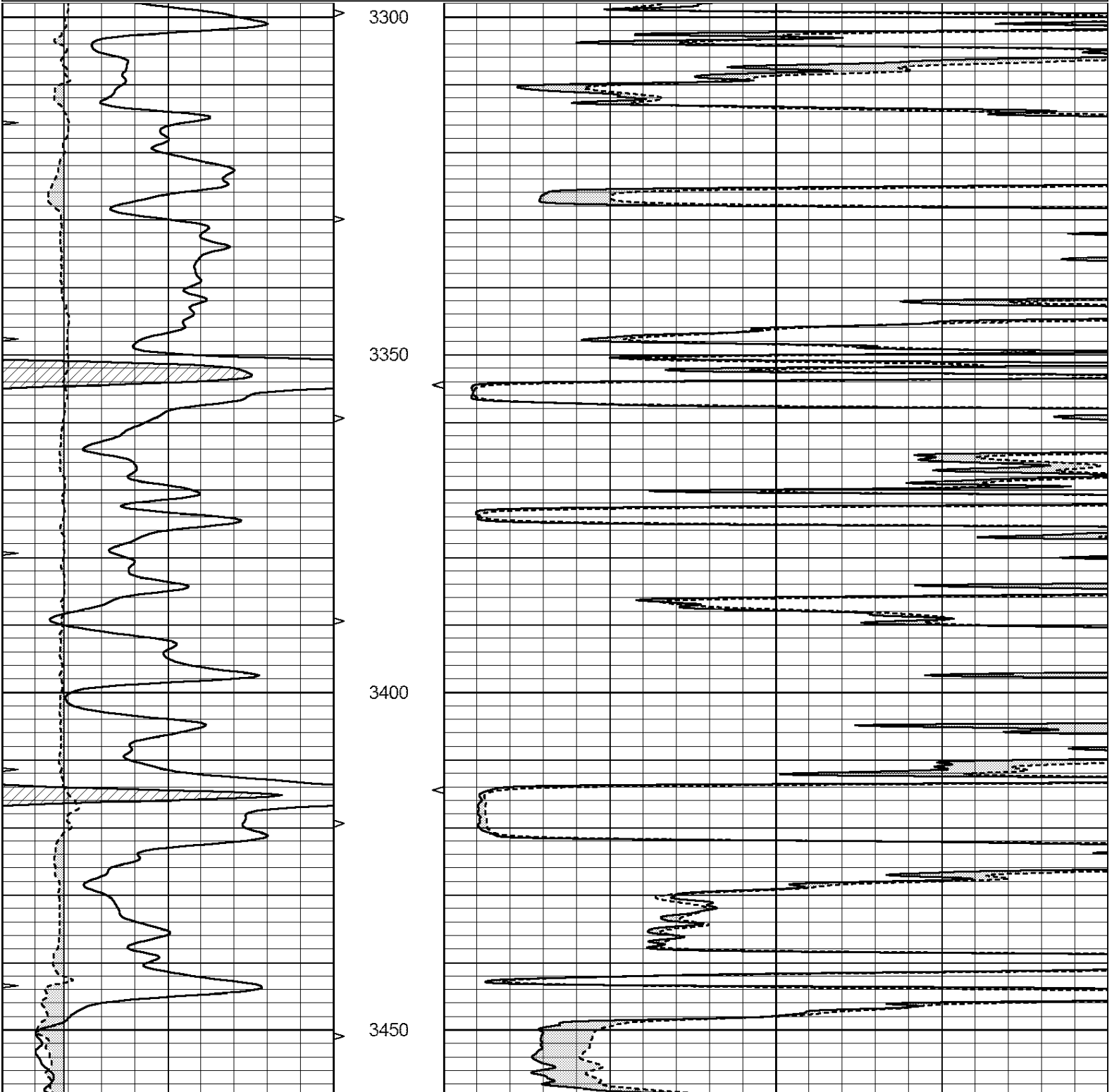


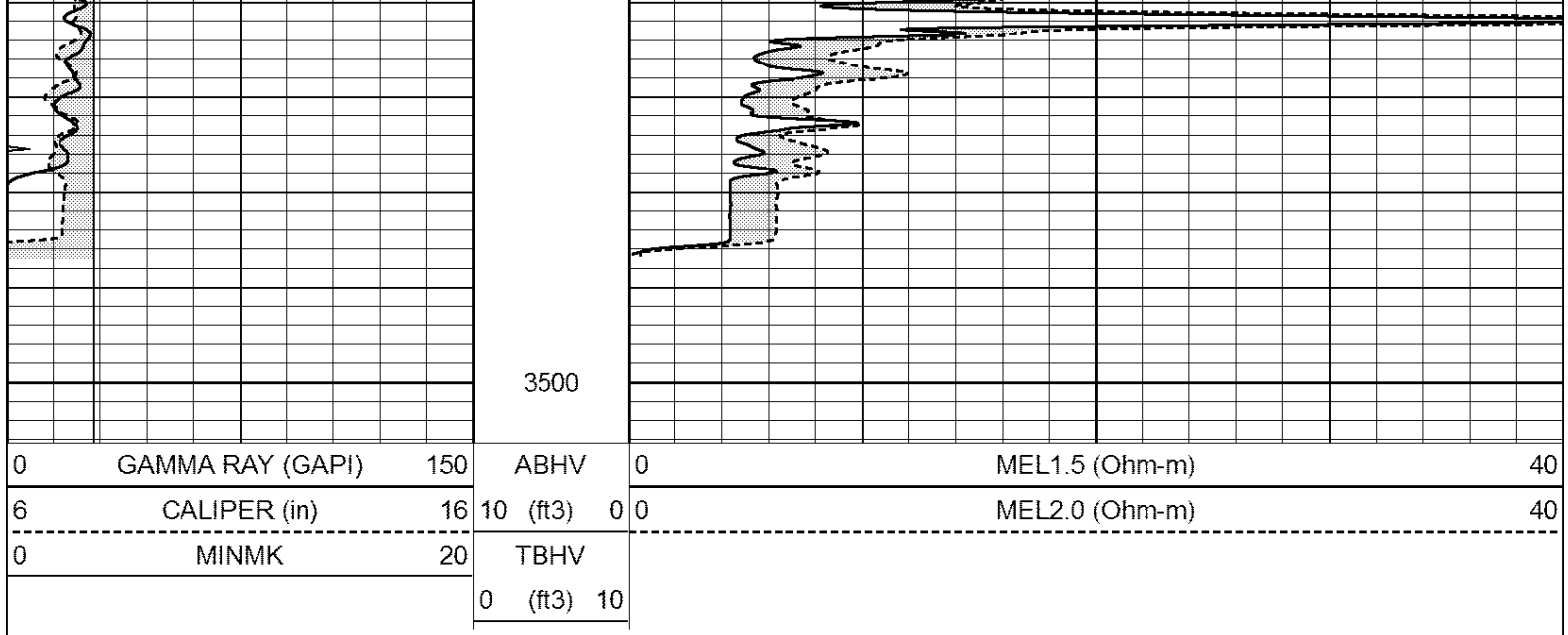
SUPERIOR
Hays,
Kansas

REPEAT SECTION

Database File: 409127ddn.db
 Dataset Pathname: pass6.4
 Presentation Format: micro
 Dataset Creation: Tue May 29 09:58:35 2012 by Calc Open-Cased 110302
 Charted by: Depth in Feet scaled 1:240

0	GAMMA RAY (GAPI)	150	ABHV	0	MEL1.5 (Ohm-m)	40
6	CALIPER (in)	16	10 (ft3)	0	MEL2.0 (Ohm-m)	40
0	MINMK	20	TBHV			
			0 (ft3)	10		





Calibration Report

Database File: 409127ddn.db
 Dataset Pathname: pass7.3
 Dataset Creation: Tue May 29 10:26:55 2012

MICRO Calibration Report

Serial Number:	MICRO5	
Tool Model:	PROBE	
Performed:	Tue May 29 09:52:54 2012	
Caliper Calibration:	Gain=2.755	Offset=-0.016
References	Low Cal	High Cal
Readings	8.500	14.500
	3.092	5.270
1.5" Calibration:	Gain=25.000	Offset=0.500
References	Low Cal	High Cal
Readings	0.000	20.000
	-0.002	0.981
2" Calibration:	Gain=45.000	Offset=-0.200
References	Low Cal	High Cal
Readings	0.000	20.000
	0.002	0.898

Gamma Ray Calibration Report

Serial Number:	GR4	
Tool Model:	OPEN	
Performed:	Tue May 29 09:37:11 2012	
Calibrator Value:	200.0	GAPI
Background Reading:	0.0	cps
Calibrator Reading:	189.0	cps
Sensitivity:	1.2000	GAPI/cps