



CHANUTE, KANSAS

**GAMMA RAY
NEUTRON
COMPLETION LOG**

Company **McFADDEN OIL COMPANY**
Well **McCALL #2Ax**
Field **MORAN/BRONSON**
County **ALLEN** State **KANSAS**

Location: **SEC 36 TWP 24S RGE 20E**
1215' FSL & 2840' FEEL
N/2 N/2 S/2 S/2

APR #: 15-001-30480-00-00
Other Services

Permanent Datum **G.L.** Elevation **1099EST**
Log Measured From **G.L.**
Drilling Measured From **G.L.** D.F. **1099EST**
G.L. **1099EST**

Date **7-16-2012**
Run Number **1 NW**
Depth Driller

Depth Logger **845.2'**
Top Log Interval **SURFACE**
Bottom Logged Interval **845.2'**
Fluid Level **FULL**

Type Fluid **WATER**
Production Casings **2 7/8" @ 1 D.**
Max. Recorded Temp. **@**
Estimated Cement Top **@**
Calculated Cement Top

Amount & Type Admix.
Drilling Contractor **COMPANY TOOLS**
Equipment Number **107**

Location **UDEN, D.**
Recorded By **McFADDEN, L.**
Missed By

<<< Fold Here >>>

All interpretations are opinions based on inferences from electrical or other measurements and we cannot and do not guarantee the accuracy or correctness of any interpretation, and we shall not, except in the case of gross or willful negligence on our part, be liable or responsible for any loss, costs, damages, or expenses incurred or sustained by anyone resulting from any interpretation made by any of our officers, agents or employees. These interpretations are also subject to our general terms and conditions set out in our current Price Schedule.

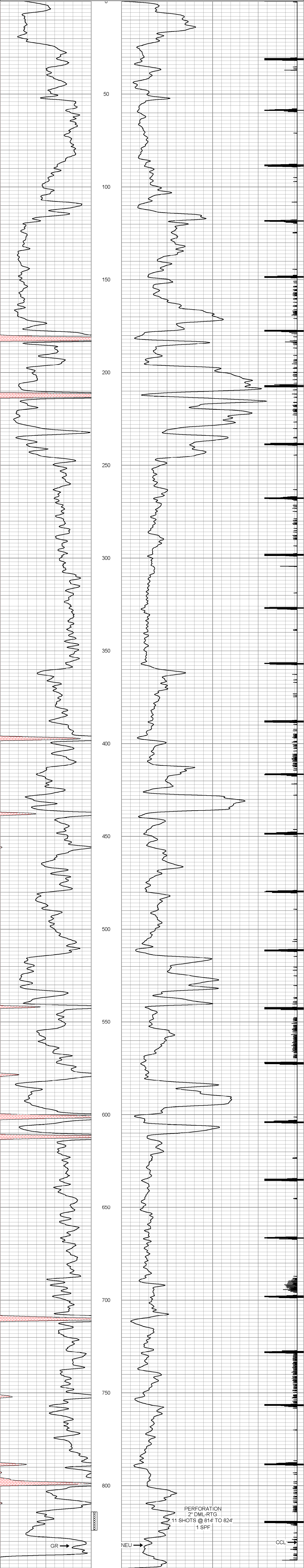
Comments

THANK YOU

| Sensor | Offset (ft) | Schematic | Description | Len (ft) | OD (in) | Wt (lb) |
|--------|-------------|-----------|---|----------|---------|---------|
| GR | 7.59 | | GR-TITAN_169 (TIT169_001) Titan 1 11/16" Gamma Ray | 4.75 | 1.69 | 20.00 |
| CCL | 5.05 | | CCL-TITAN_169 (TIT169) Titan 1 11/16" Logging CCL | 1.83 | 1.69 | 7.50 |
| NEU | 0.63 | | NEU-TITAN_169 (TIT169_001) Titan 1 11/16" Neutron | 4.33 | 1.69 | 20.00 |

Dataset: mccall #2ax.db: field/well/run1/pass2
Total Length: 10.92 ft
Total Weight: 47.50 lb
O.D.: 1.69 in

Database File: g:\mccall #2ax.db
Dataset Pathname: pass2
Presentation Format: gr-n-ccl
Dataset Creation: Mon Jul 16 11:08:46 2012 by Log Std Casedhole 07122
Charted by: Depth in Feet scaled 1.240



PERFORATION
2" DML-RTG
11 SHOTS @ 814 TO 824'
1 SPF

GR → NEU → CCL →



Company **McFADDEN OIL COMPANY**
Well **McCALL #2Ax**
Field **MORAN/BRONSON**
County **ALLEN** SEC. 36 TWP. 24S RGE. 20E
State **KANSAS** Date **7-16-2012**