



SUPERIOR
Hays,
Kansas

**RADIATION
GUARD
LOG**

Company PALOMINO PETROLEUM, INC.
Well PETERS-ALLEN #1
Field
County NESS
State KANSAS

Company PALOMINO PETROLEUM, INC.
Well PETERS-ALLEN #1
Field
County NESS State KANSAS

Location: 188' FSL & 1175' FWL
API # : 15-135-25462-0000
Other Services
SEC 22 TWP 16S RGE 26W
Permanent Datum GROUND LEVEL Elevation 2645
Log Measured From KELLY BUSHING 10' A.G.L.
Drilling Measured From KELLY BUSHING
Elevation
K.B. 2655
D.F.
G.L. 2645

Date	8/30/12		
Run Number	ONE		
Depth Driller	4685		
Depth Logger	4677		
Bottom Logged Interval	4676		
Top Log Interval	0		
Casing Driller	8 5/8" @ 213		
Casing Logger	213		
Bit Size	7 7/8		
Type Fluid in Hole	CHEMICAL MUD	CHLORIDES 5900 PPM	
Density / Viscosity	9.4/47		
pH / Fluid Loss	10.5/12.0		
Source of Sample	FLOWLINE		
Rin @ Meas. Temp	.52 @ 90F		
Rmf @ Meas. Temp	.39 @ 90F		
Rmc @ Meas. Temp	.62 @ 90F		
Source of Rmf / Rmc	MEASURED		
Rin @ BHT	.38 @ 122F		
Time Circulation Stopped	2 HOURS		
Time Logger on Bottom			
Maximum Recorded Temperature	122F		
Equipment Number	680		
Location	HAYS, KS.		
Recorded By	DAN GOTTSCHALK		
Witnessed By	SAMAN SHARIFAI	NICK GERSTNER	

<<< Fold Here >>>

All interpretations are opinions based on inferences from electrical or other measurements and we cannot and do not guarantee the accuracy or correctness of any interpretation, and we shall not, except in the case of gross or willful negligence on our part, be liable or responsible for any loss, costs, damages, or expenses incurred or sustained by anyone resulting from any interpretation made by any of our officers, agents or employees. These interpretations are also subject to our general terms and conditions set out in our current Price Schedule.

Comments

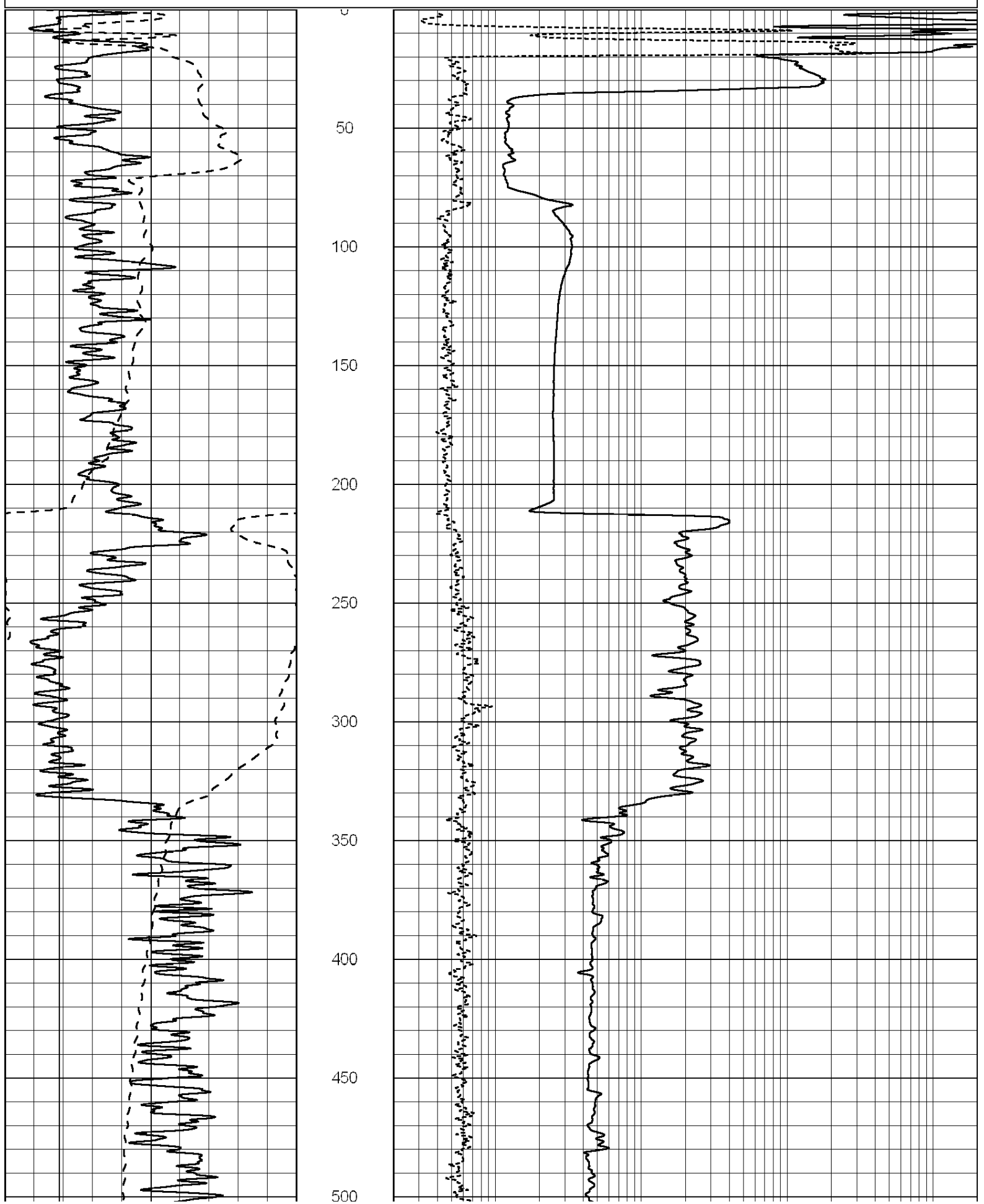
**THANK YOU FOR USING SUPERIOR WELL SERVICE (785) 628-6395
DIRECTIONS
UTICA, KS. 1 WEST - NORTH AND WEST INTO**

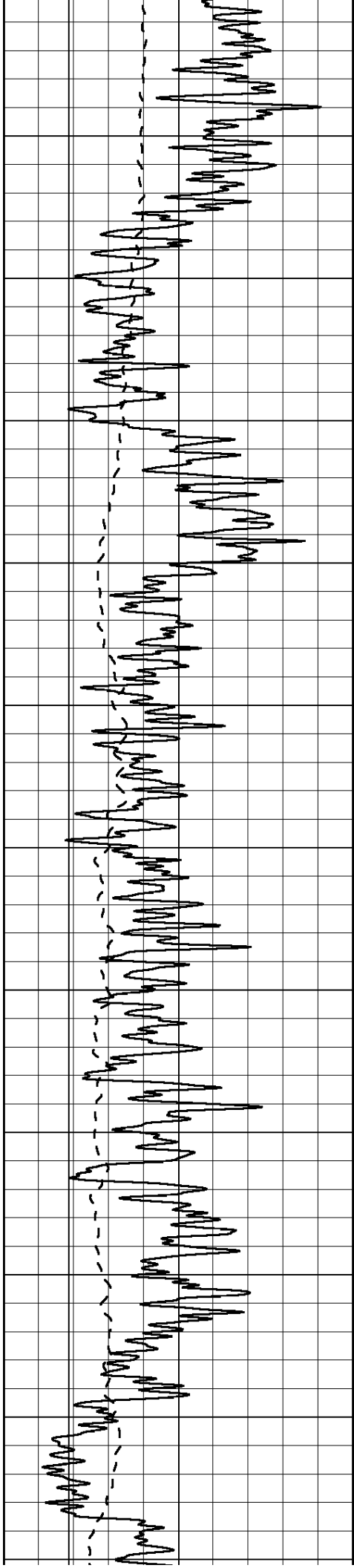
The caliper voltage quit after the repeat sections and the operator elected not to run another tool in the hole to complete the log. Also, there was 8' of fill between the first pass and the final pass on the log, making an LTD of 4677 instead of 4685.

Database File: 009592rag.db
Dataset Pathname: pass7.5
Presentation Format: rag2inch
Dataset Creation: Thu Aug 30 14:55:33 2012
Charted by: Depth in Feet scaled 1:600

0	GAMMA RAY (GAPI)	150
-100	SP (mV)	100

0.2	GUARD (Ohm-m)	2000
0	NEUTRON (NAPI)	1000





550

600

650

700

750

800

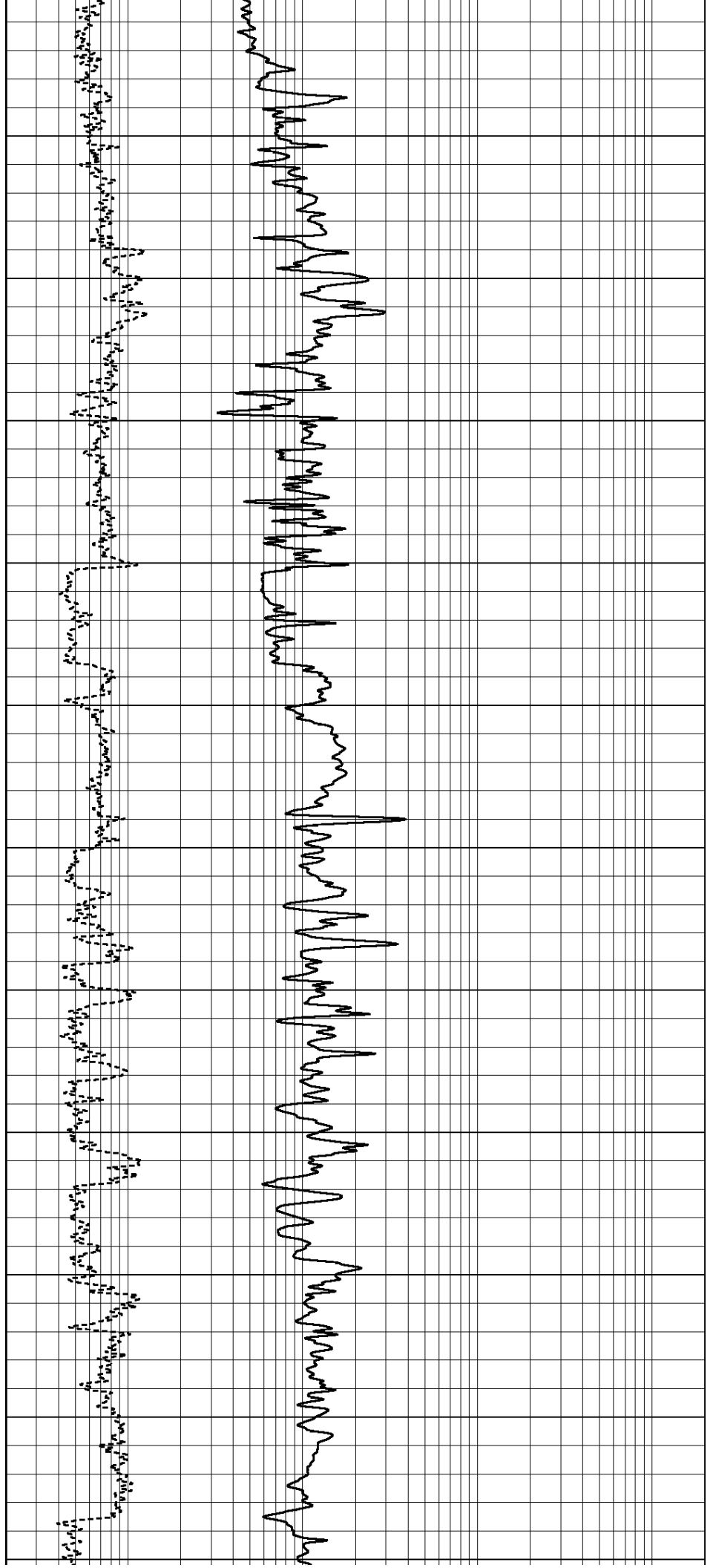
850

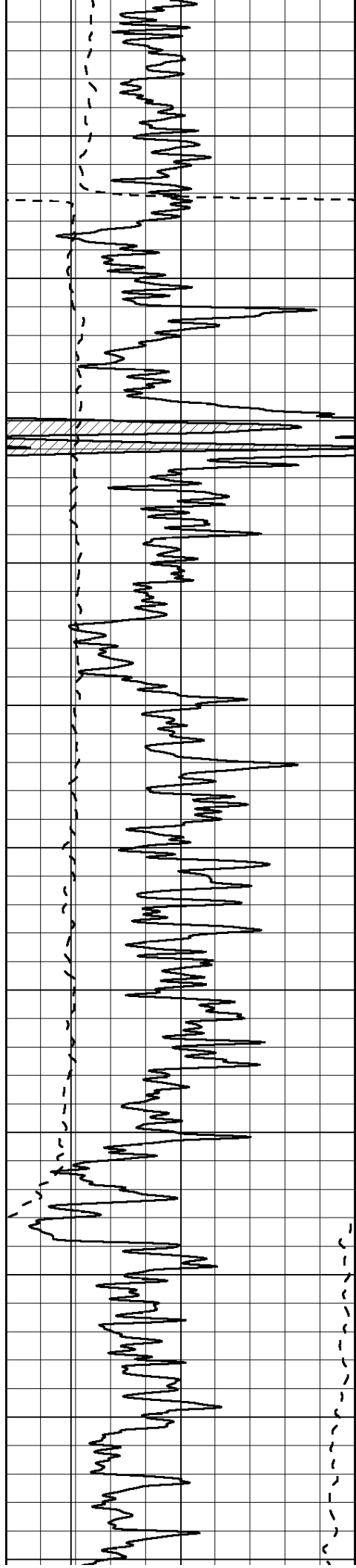
900

950

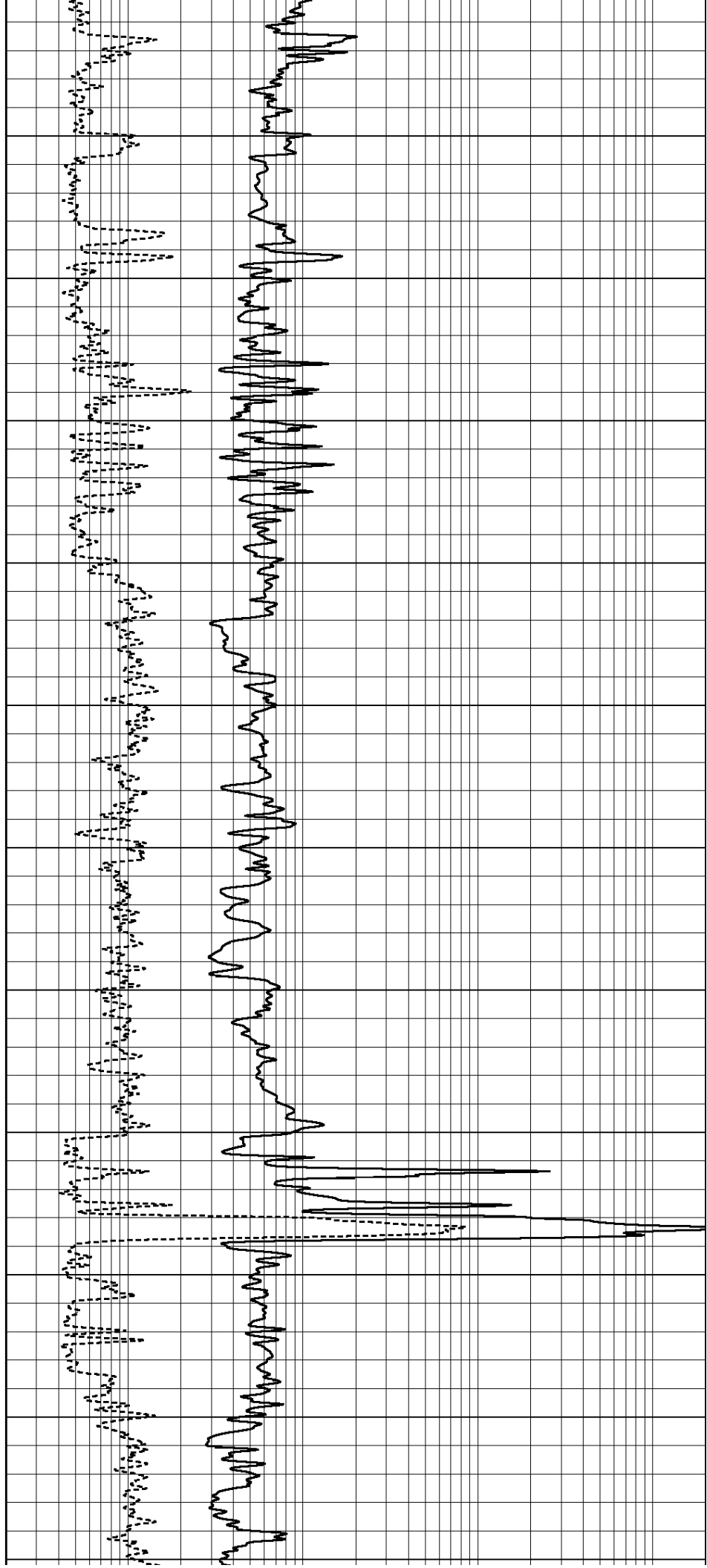
1000

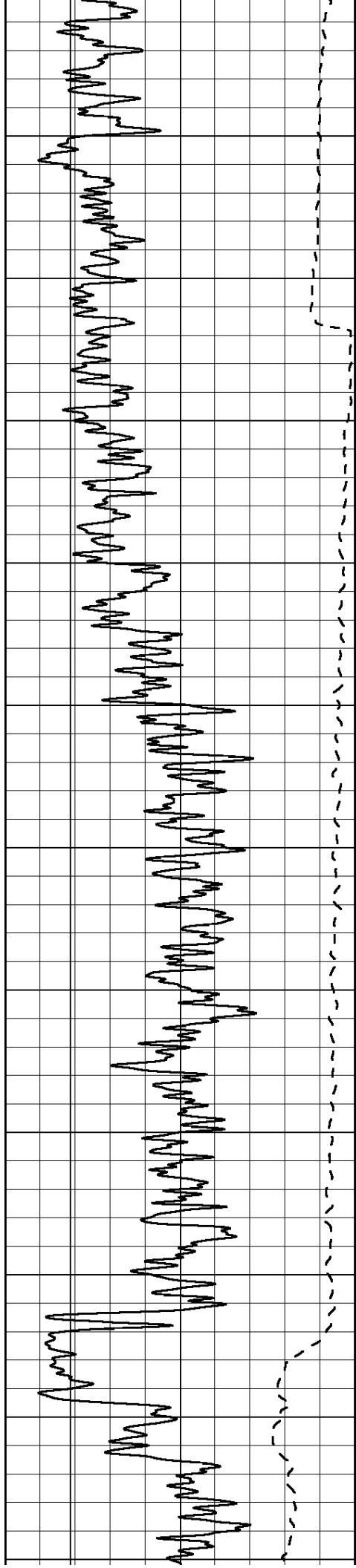
1050



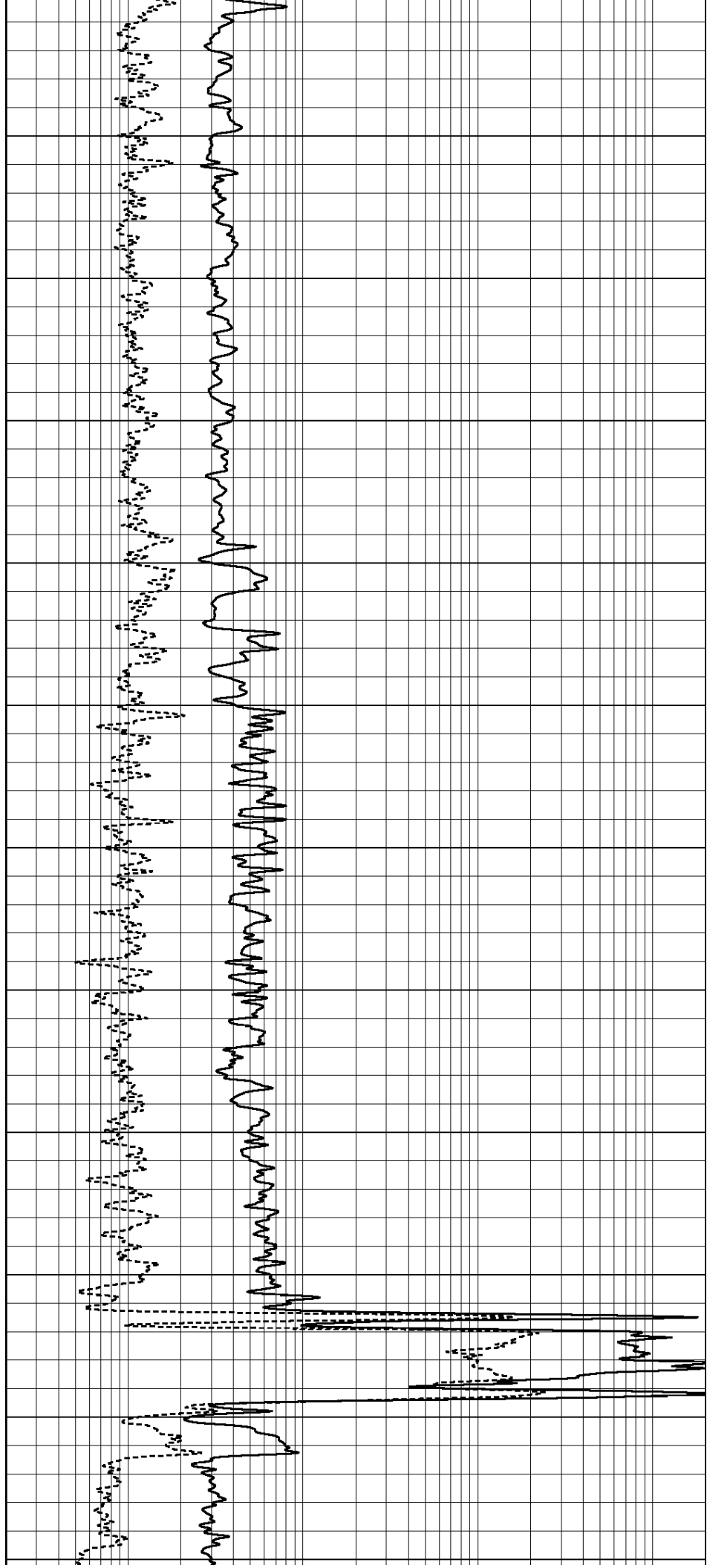


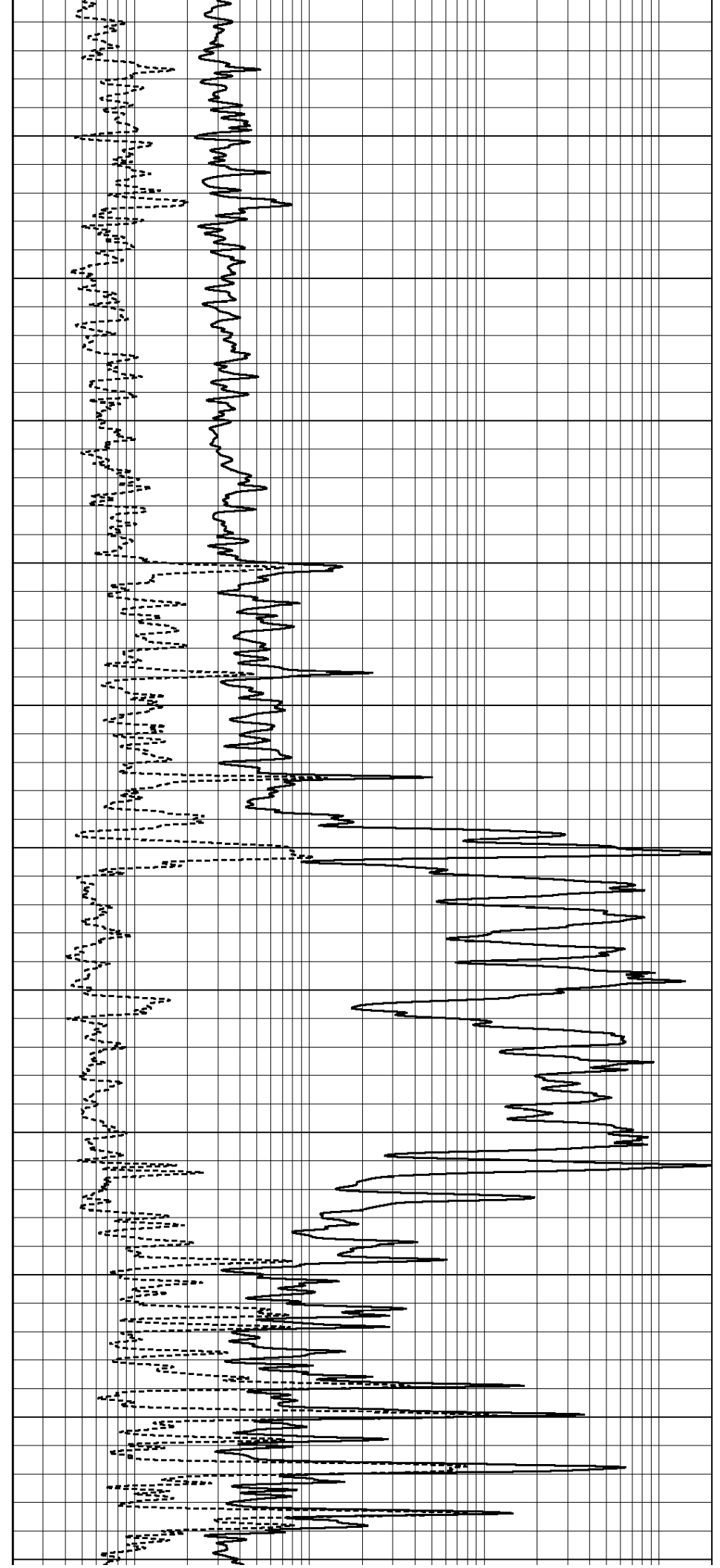
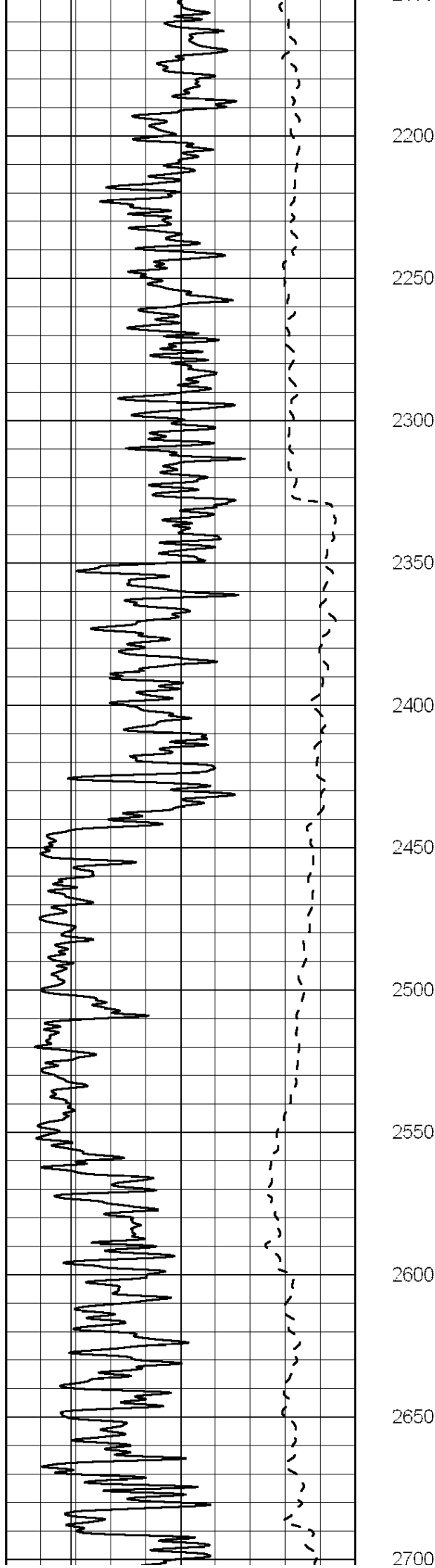
1100
1150
1200
1250
1300
1350
1400
1450
1500
1550
1600

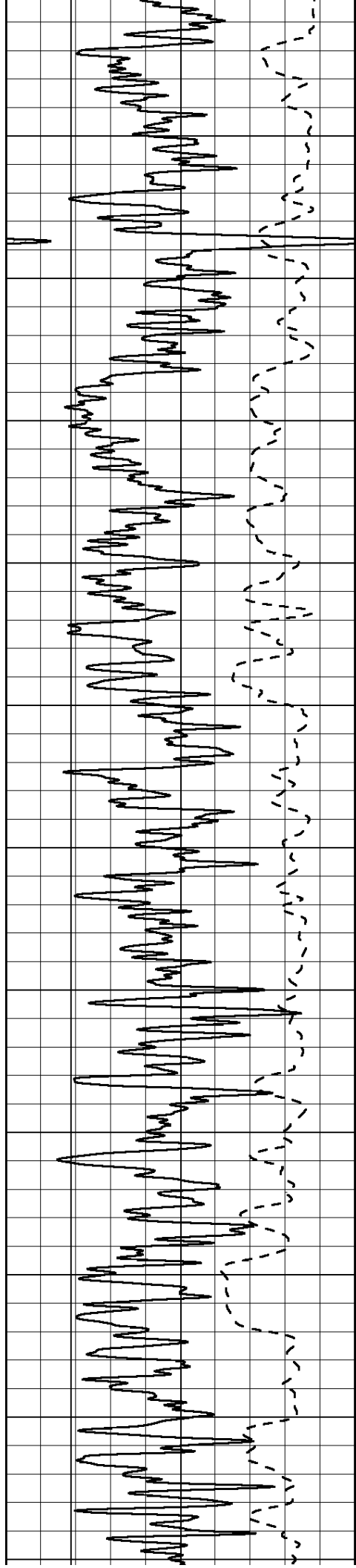




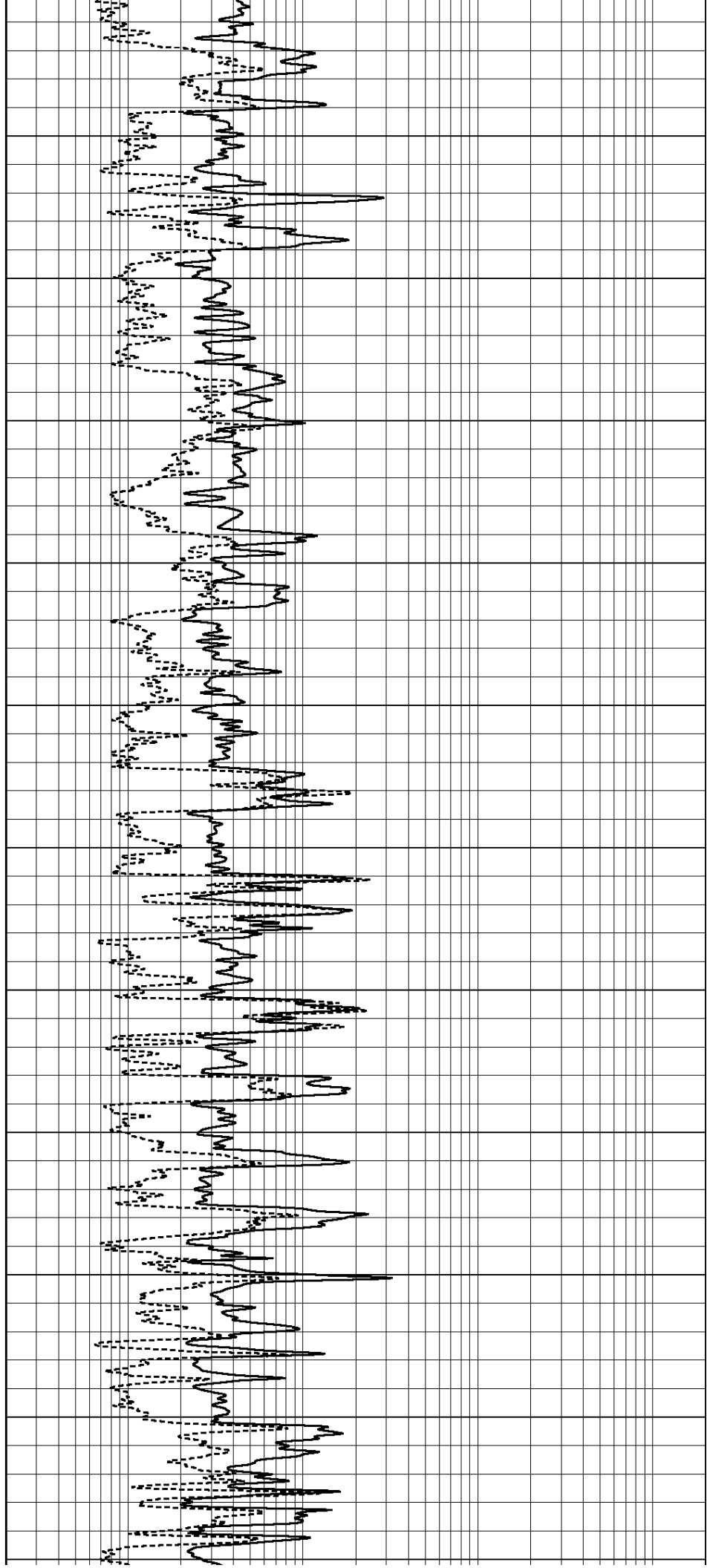
1650
1700
1750
1800
1850
1900
1950
2000
2050
2100
2150

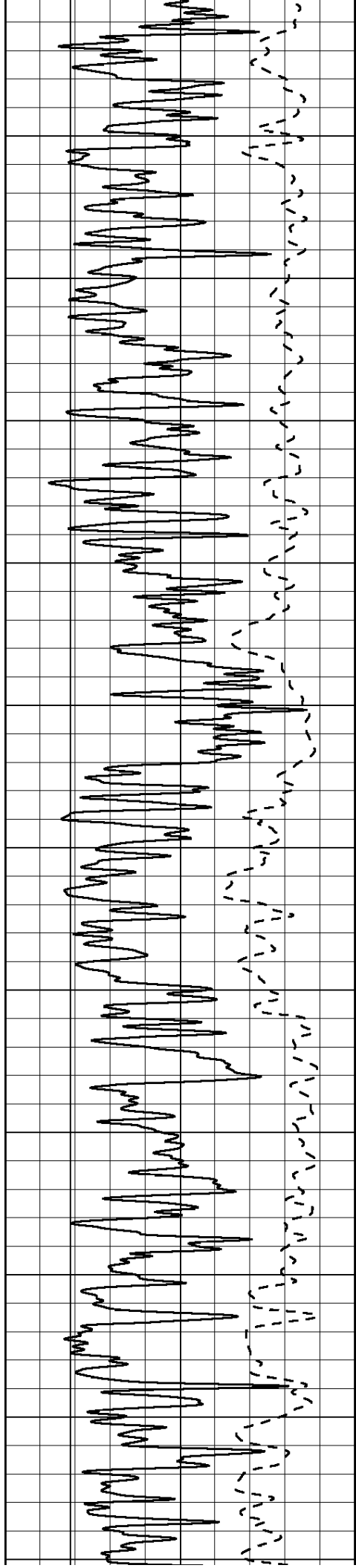






2750
2800
2850
2900
2950
3000
3050
3100
3150
3200
3250





3300

3350

3400

3450

3500

3550

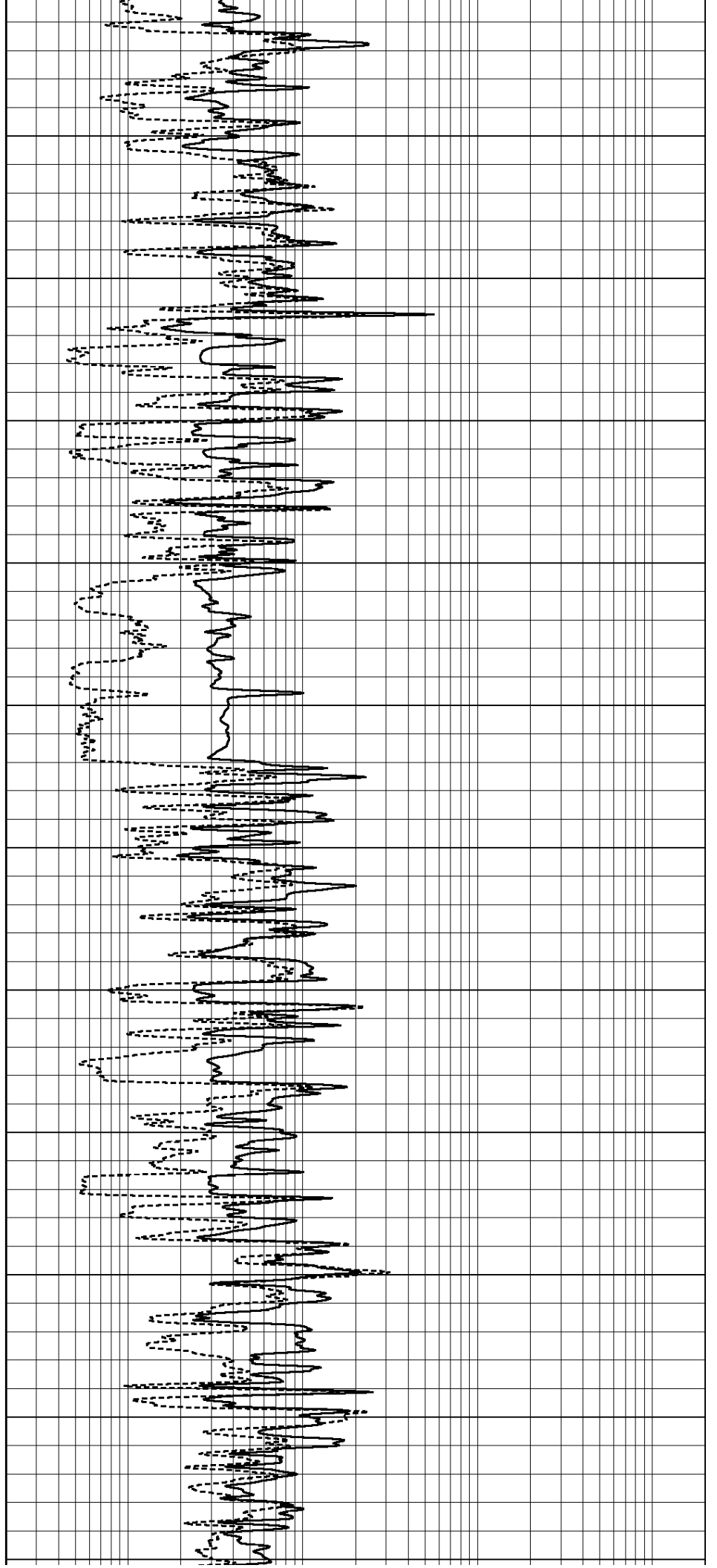
3600

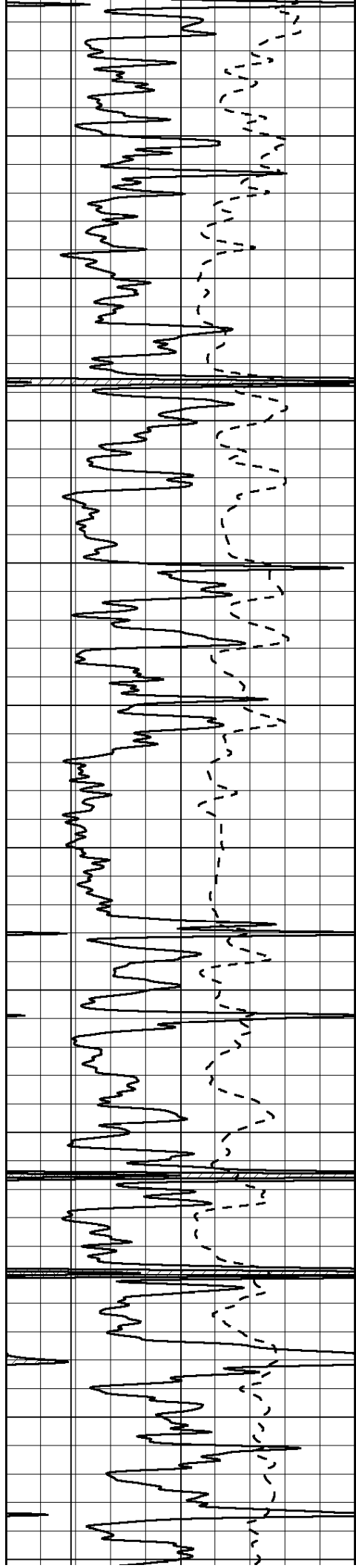
3650

3700

3750

3800





3850

3900

3950

4000

4050

4100

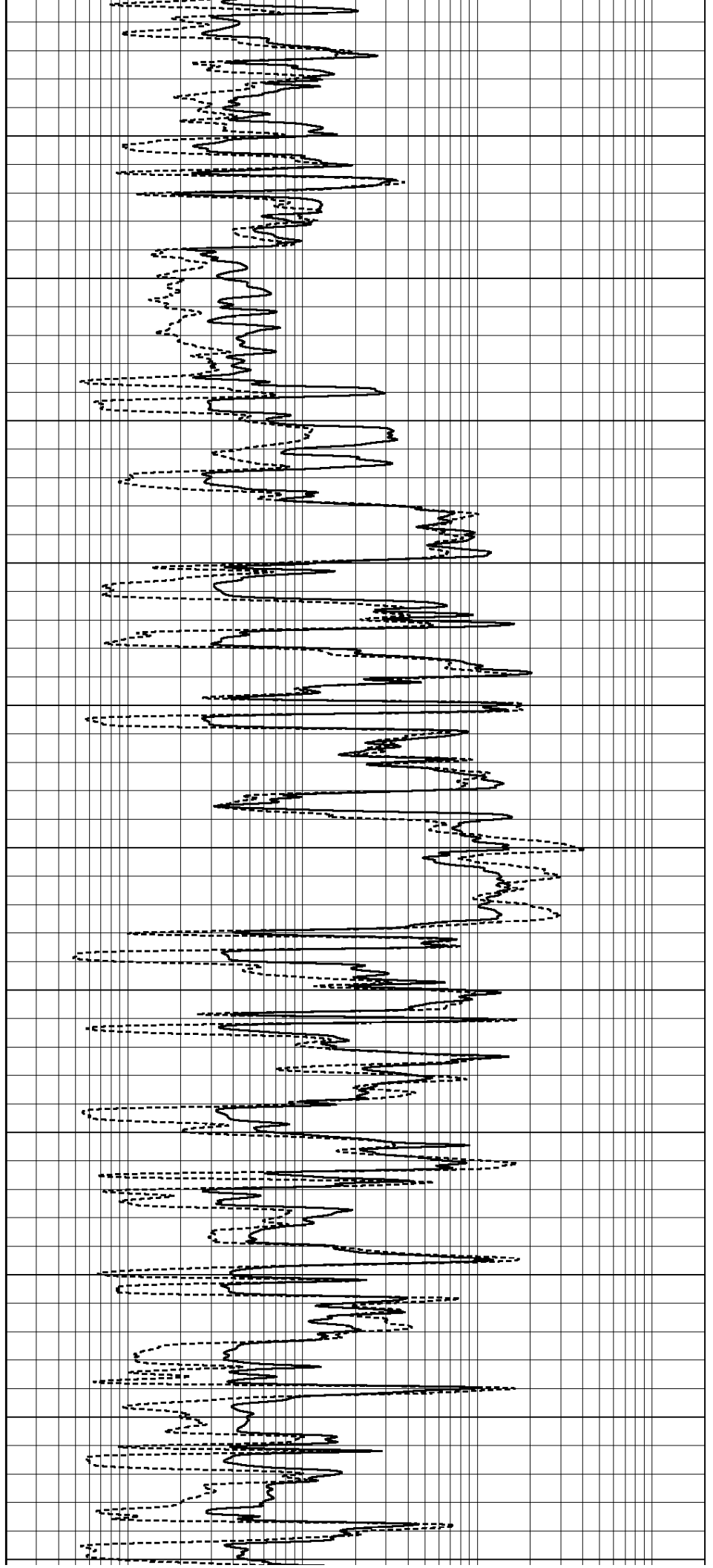
4150

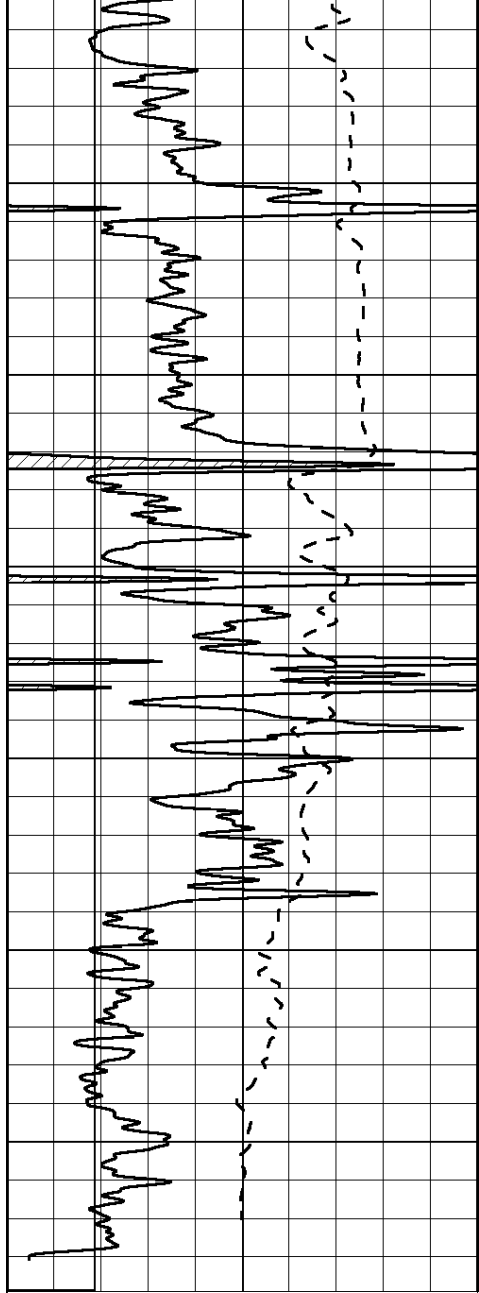
4200

4250

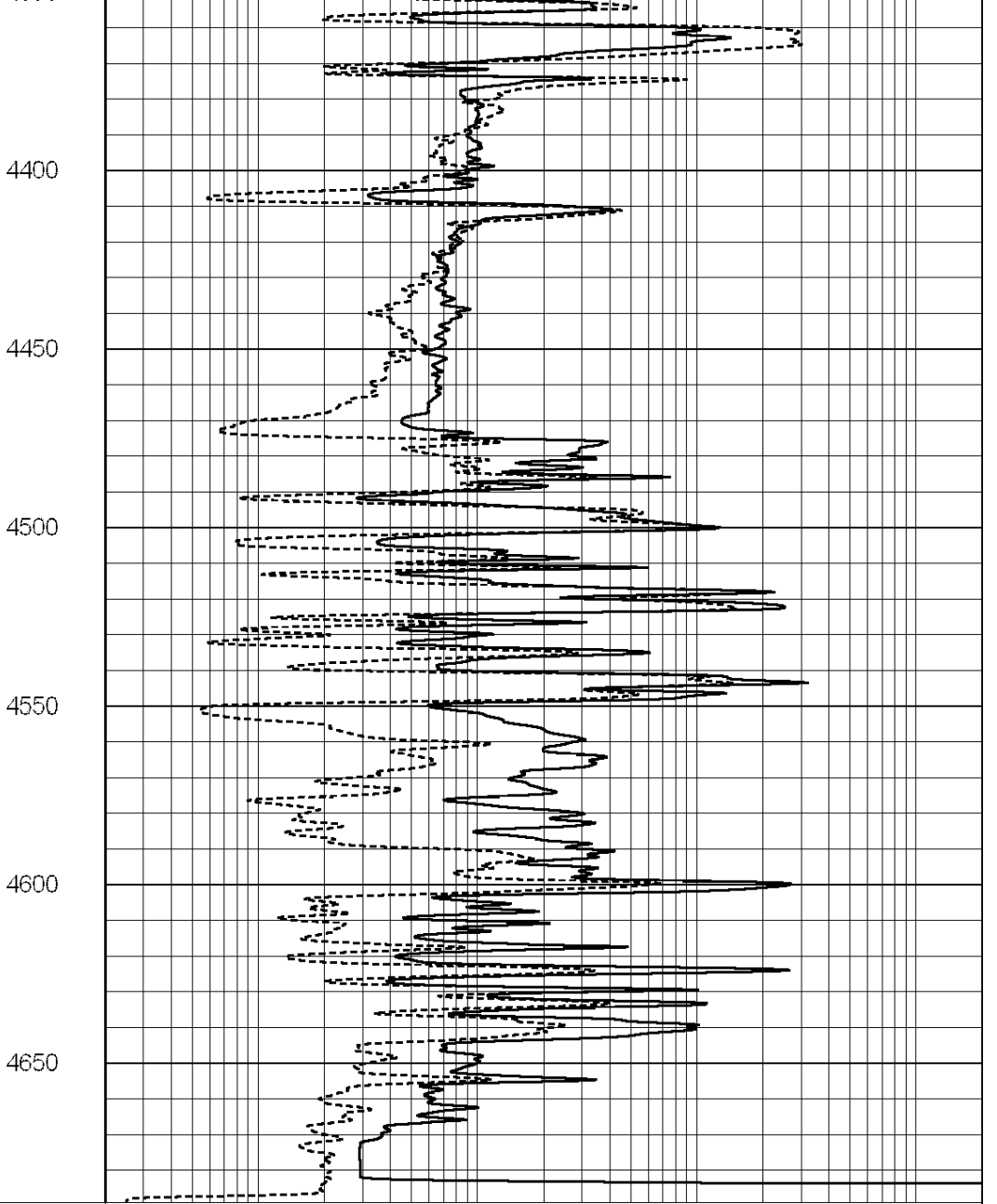
4300

4350





0	GAMMA RAY (GAPI)	150
-100	SP (mV)	100

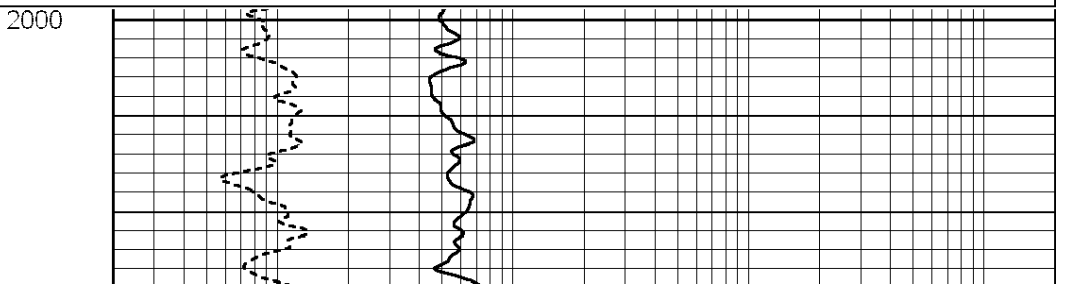
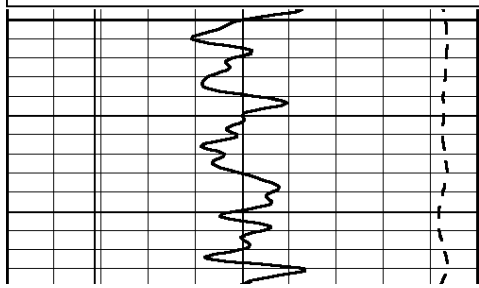


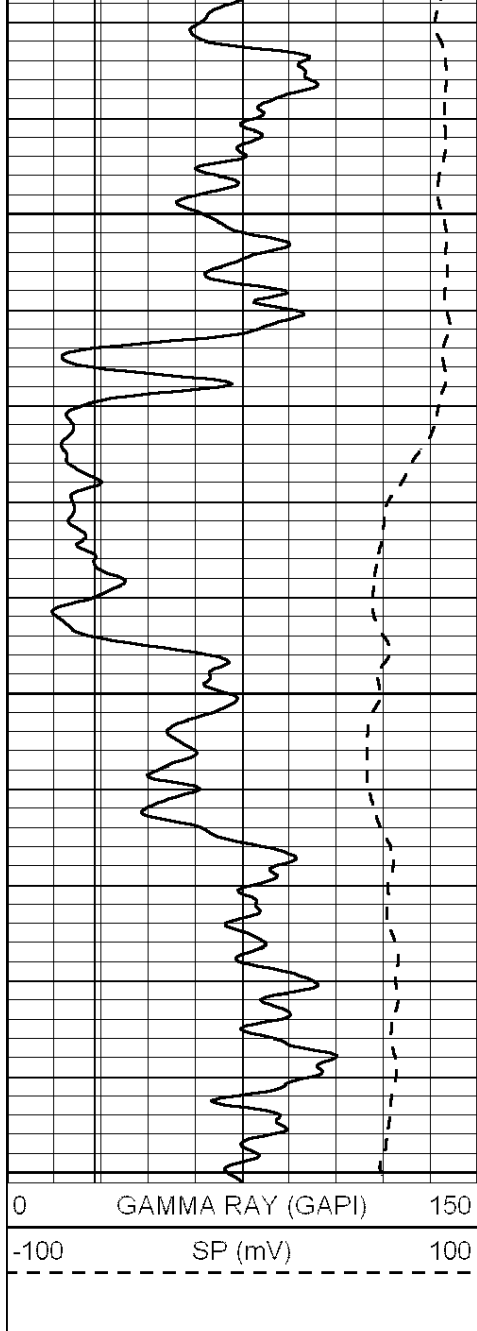
0.2	GUARD (Ohm-m)	2000
0	NEUTRON (NAPI)	1000

Database File: 009592rag.db
 Dataset Pathname: pass7.5
 Presentation Format: rag2inch
 Dataset Creation: Thu Aug 30 14:55:33 2012
 Charted by: Depth in Feet scaled 1:240

0	GAMMA RAY (GAPI)	150
-100	SP (mV)	100

0.2	GUARD (Ohm-m)	2000
0	NEUTRON (NAPI)	1000

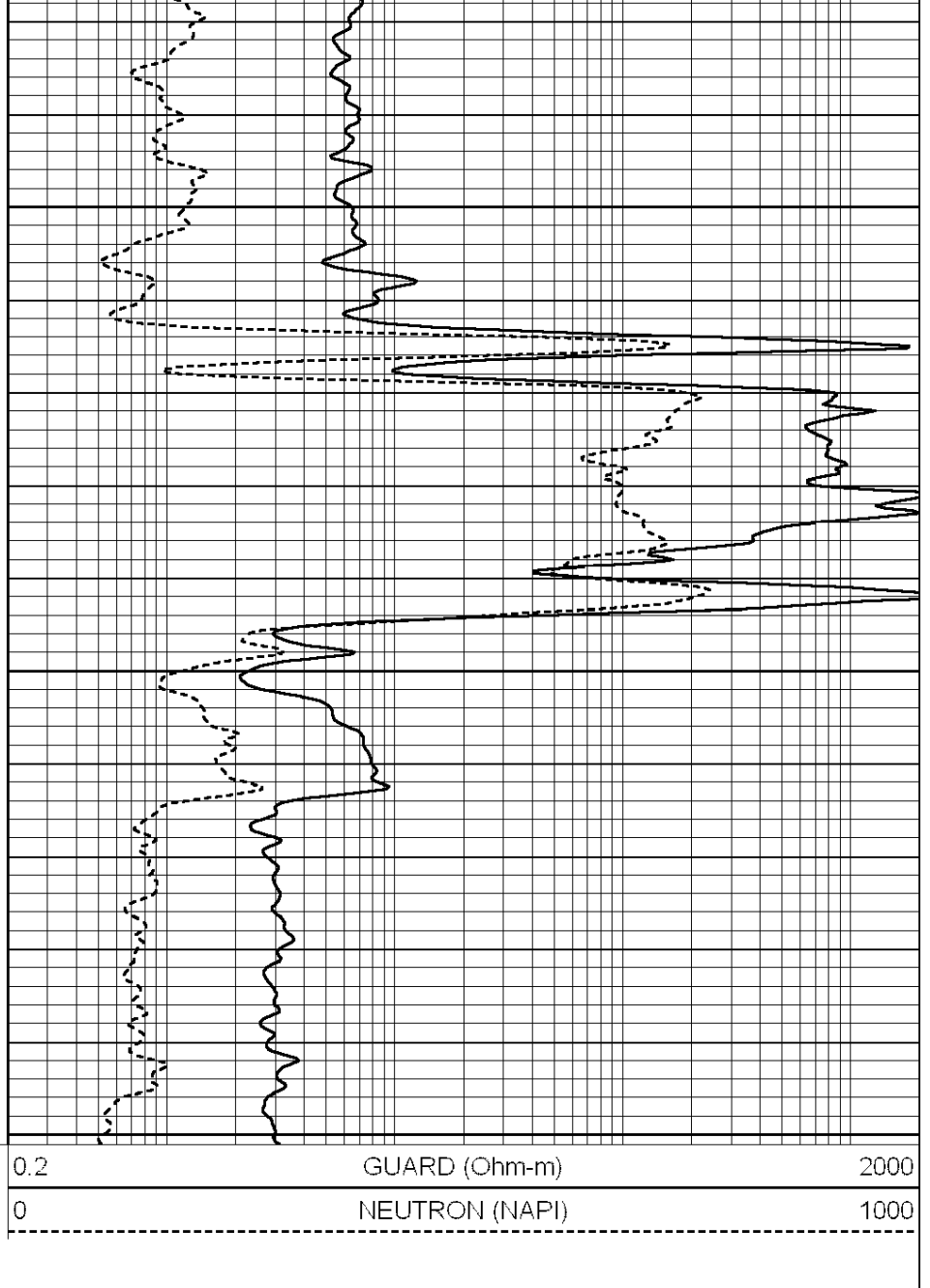




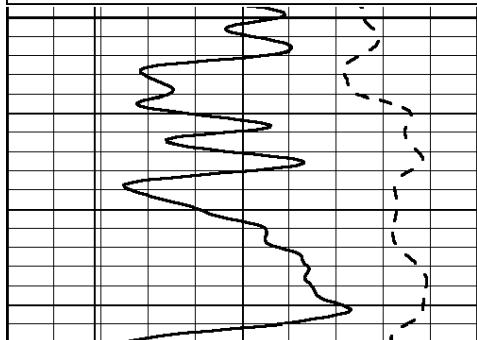
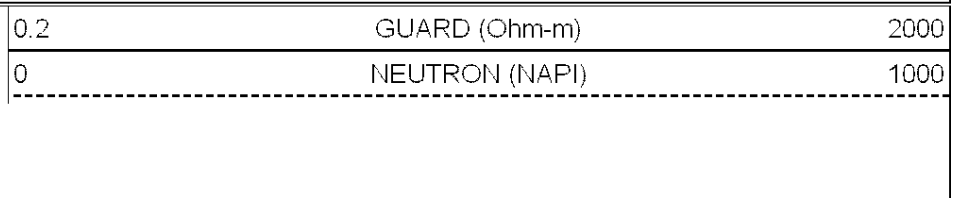
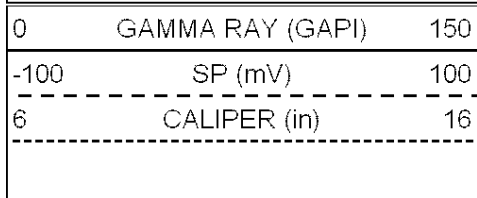
2050

2100

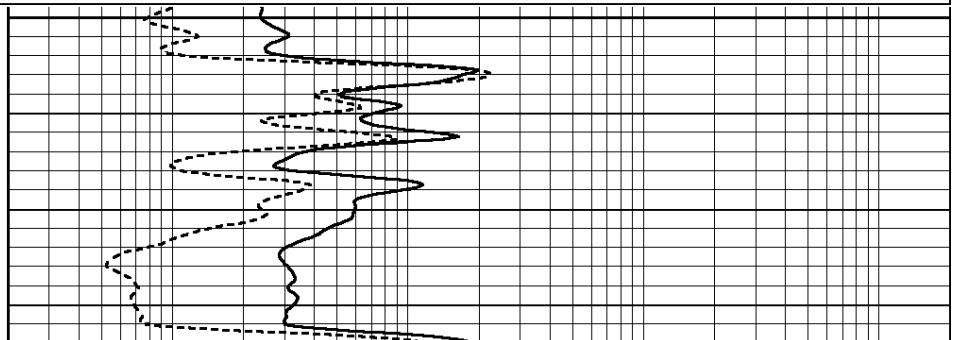
2150

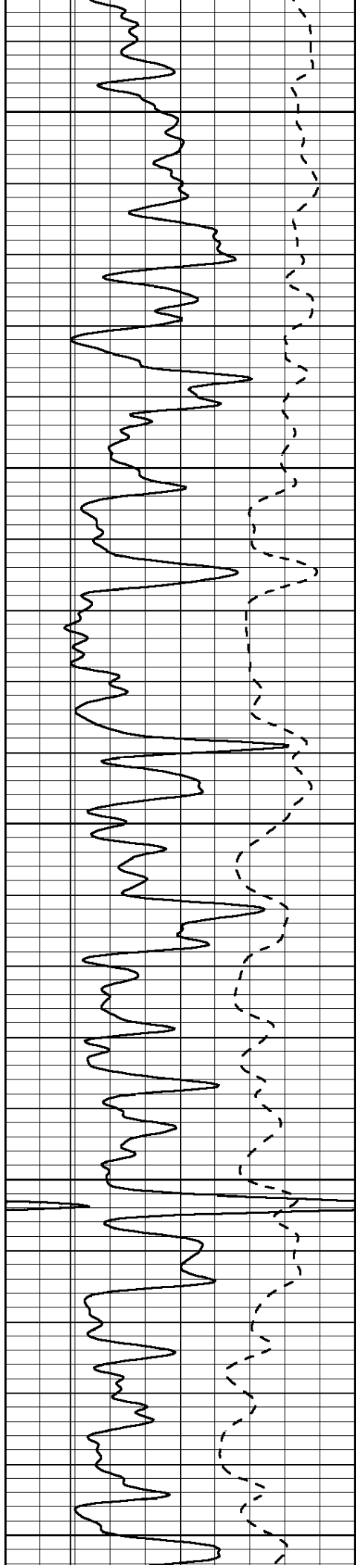


Database File: 009592rag.db
 Dataset Pathname: pass7.5
 Presentation Format: rag
 Dataset Creation: Thu Aug 30 14:55:33 2012
 Charted by: Depth in Feet scaled 1:240



3600





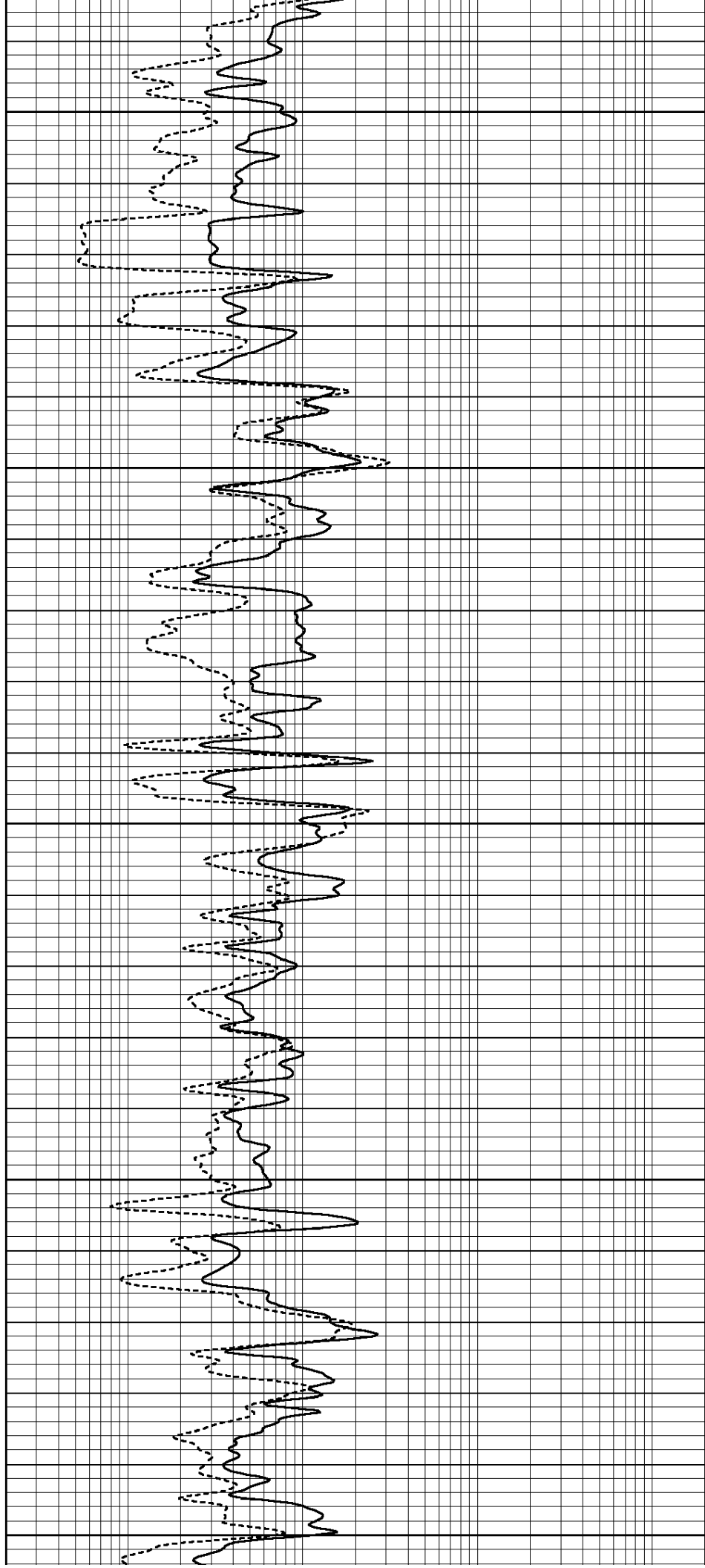
3650

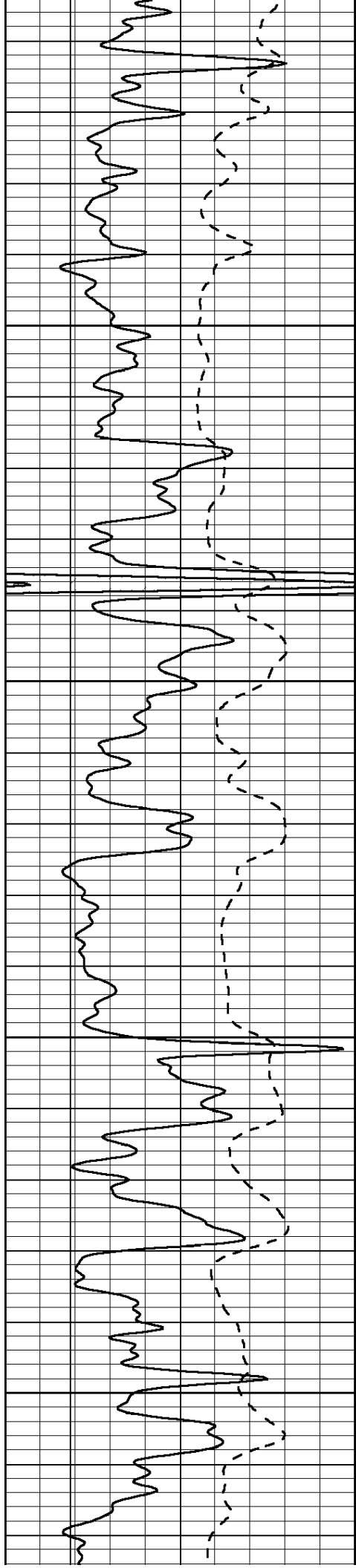
3700

3750

3800

3850



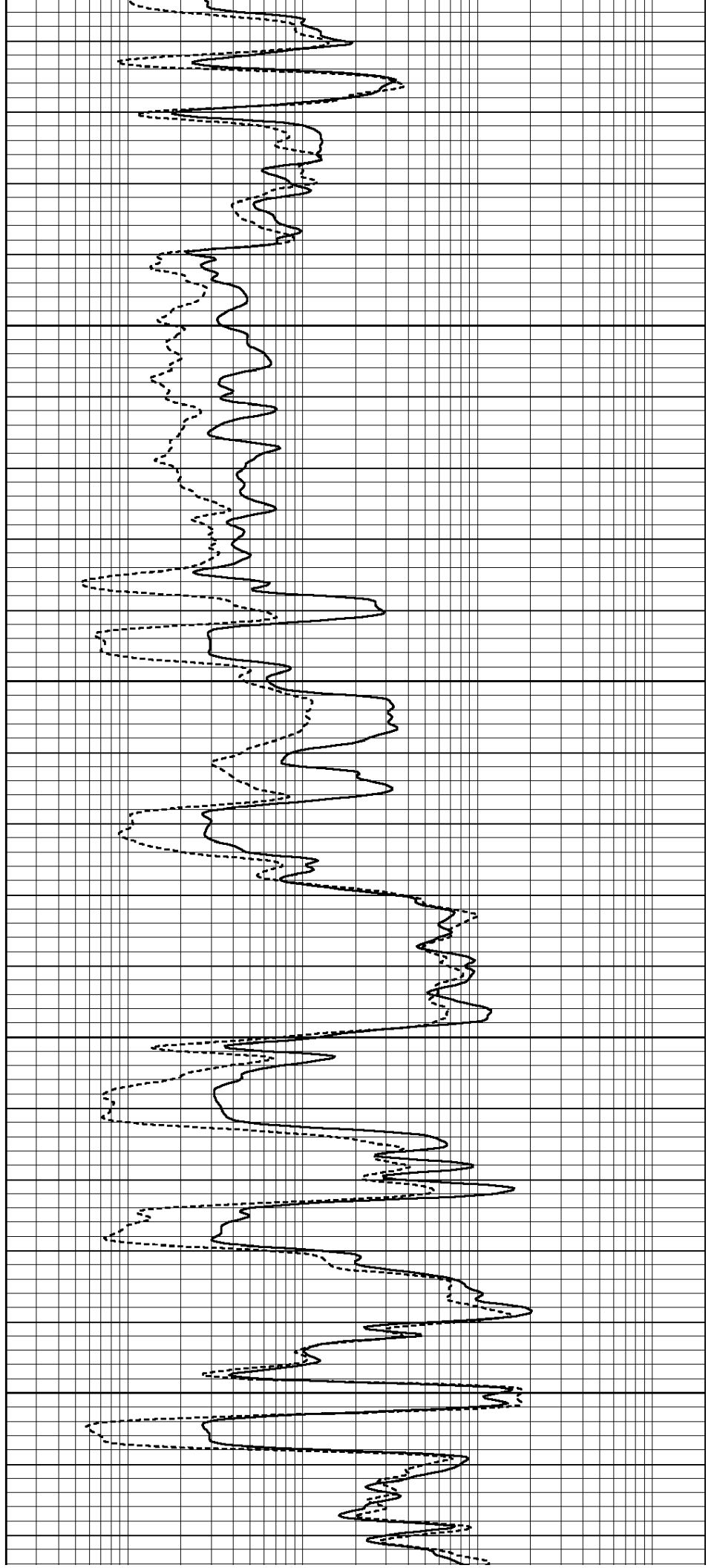


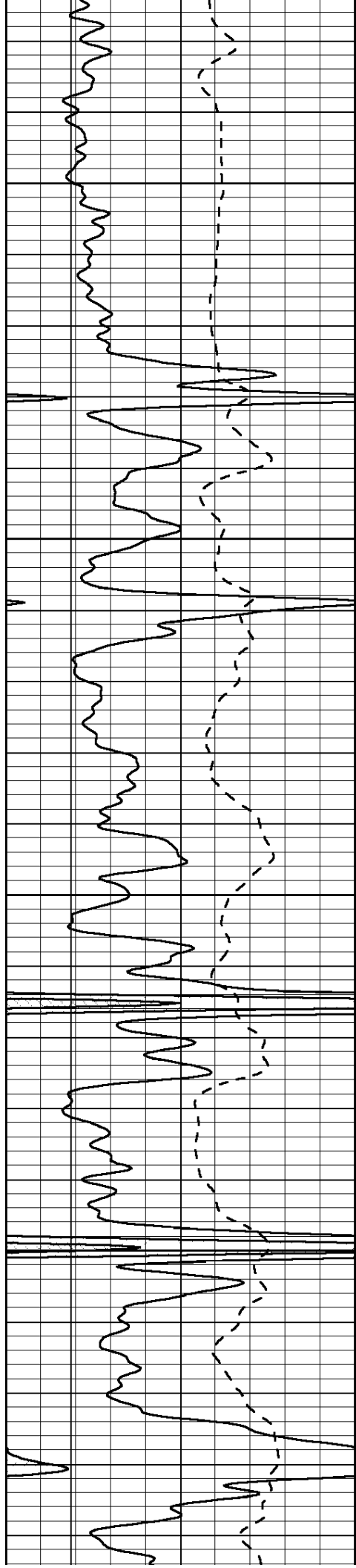
3900

3950

4000

4050



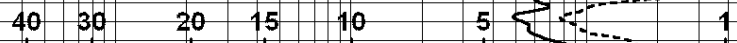


4100

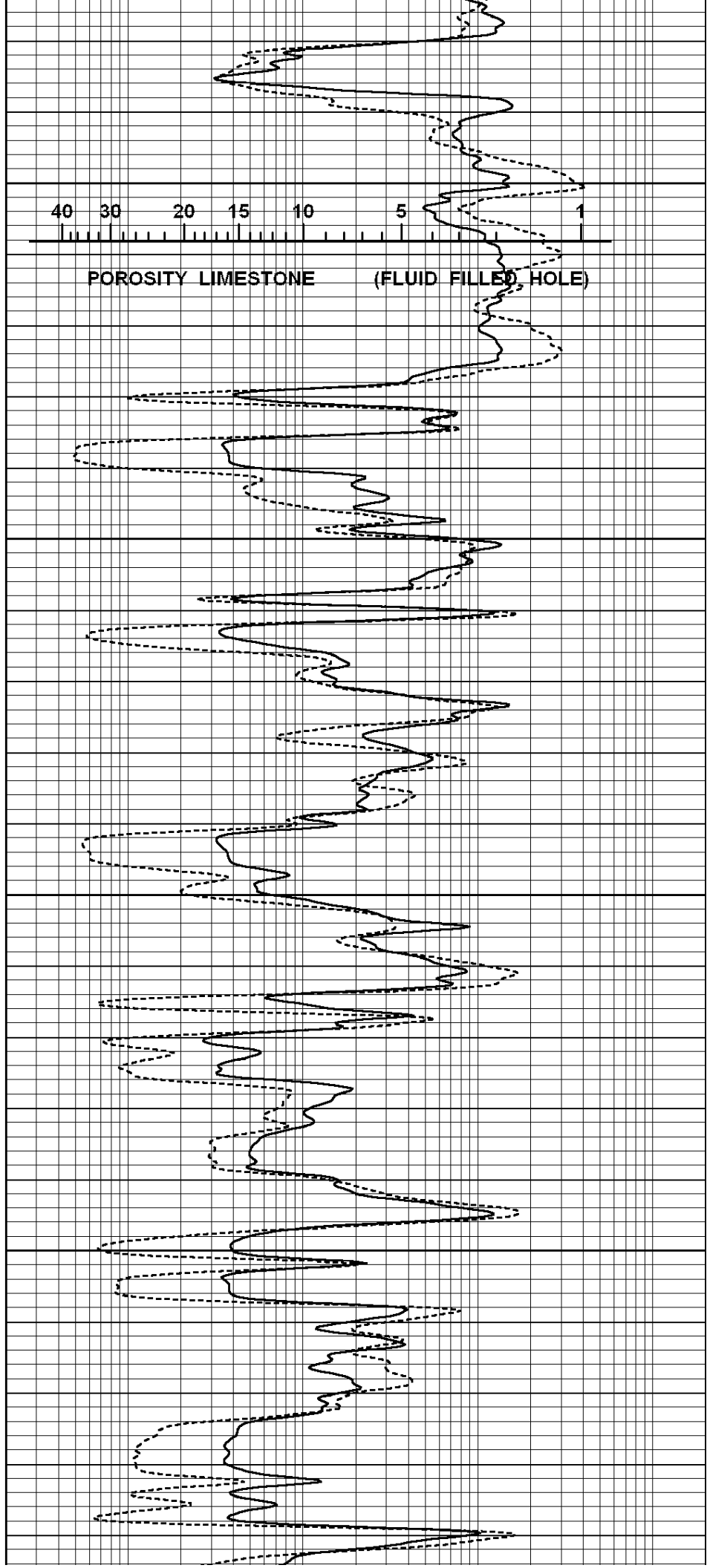
4150

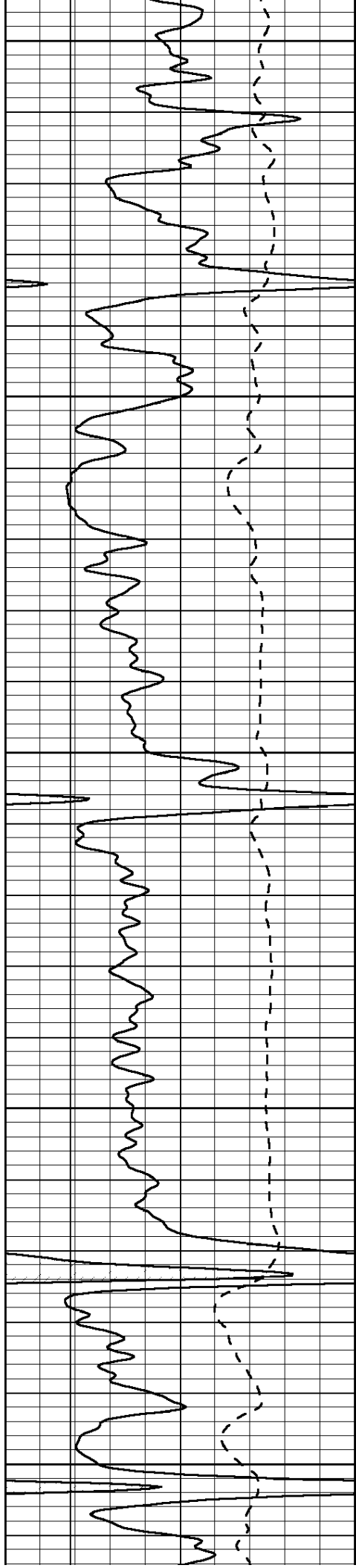
4200

4250



POROSITY LIMESTONE (FLUID FILLED HOLE)





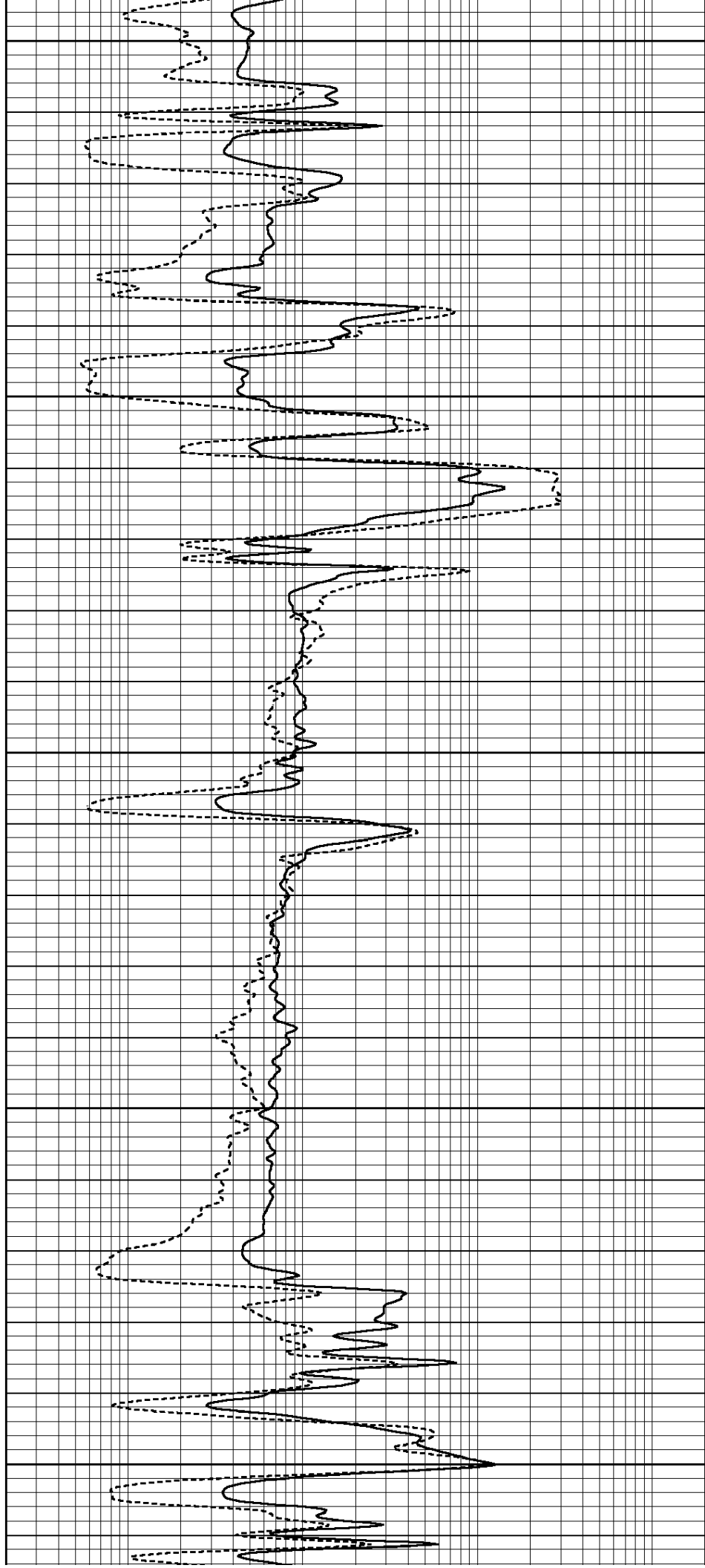
4300

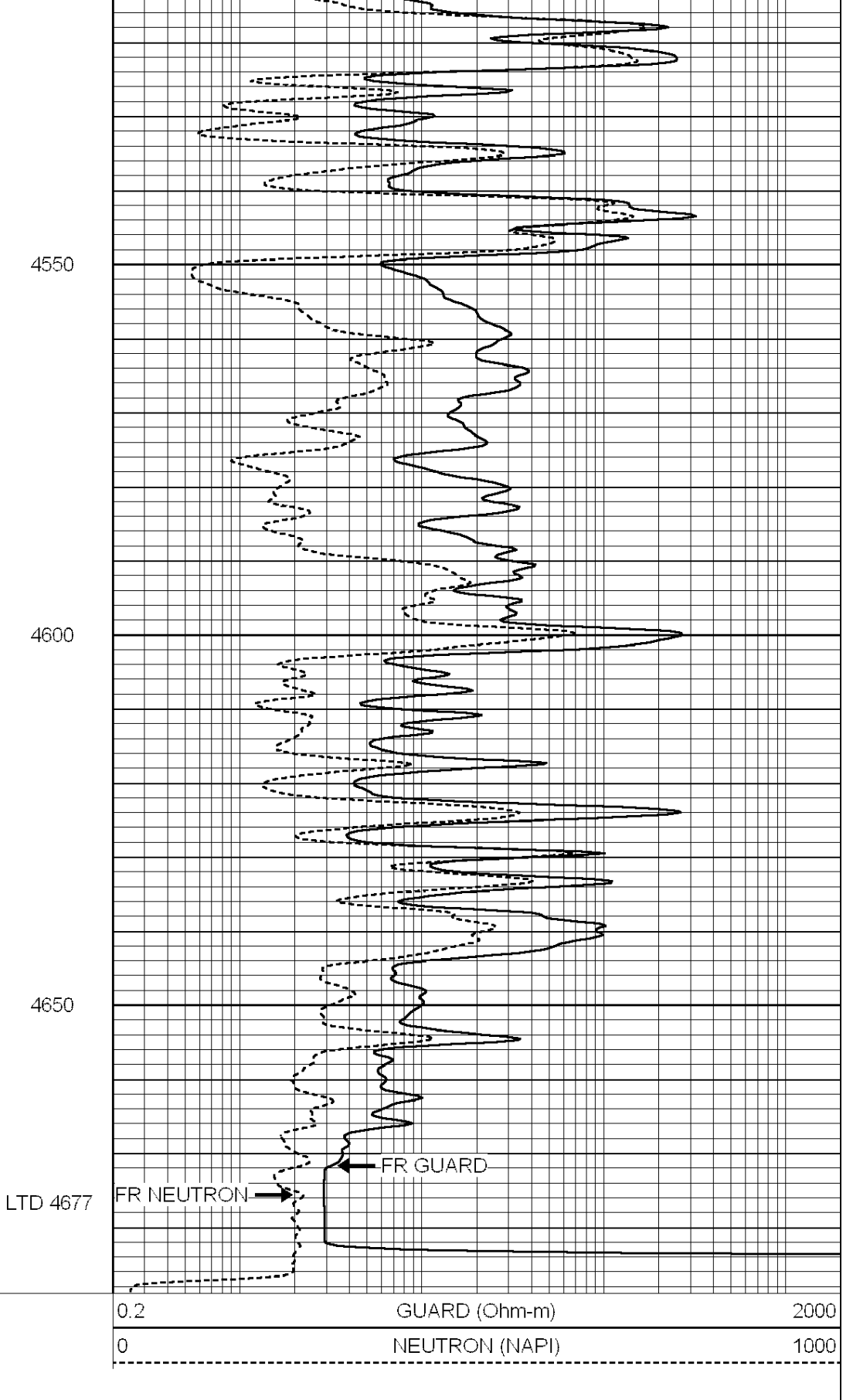
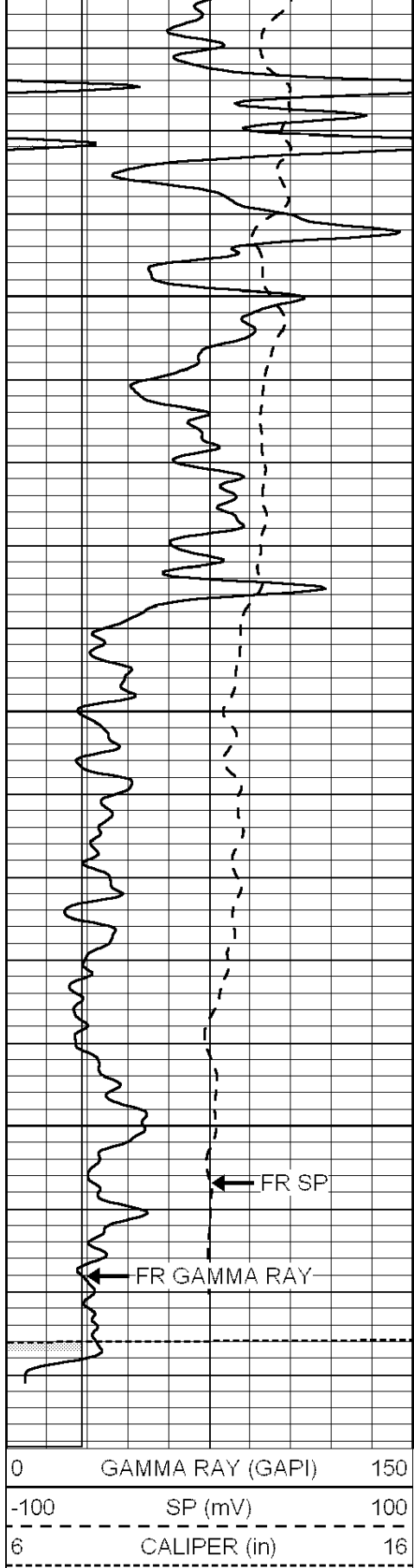
4350

4400

4450

4500





4550

4600

4650

LTD 4677

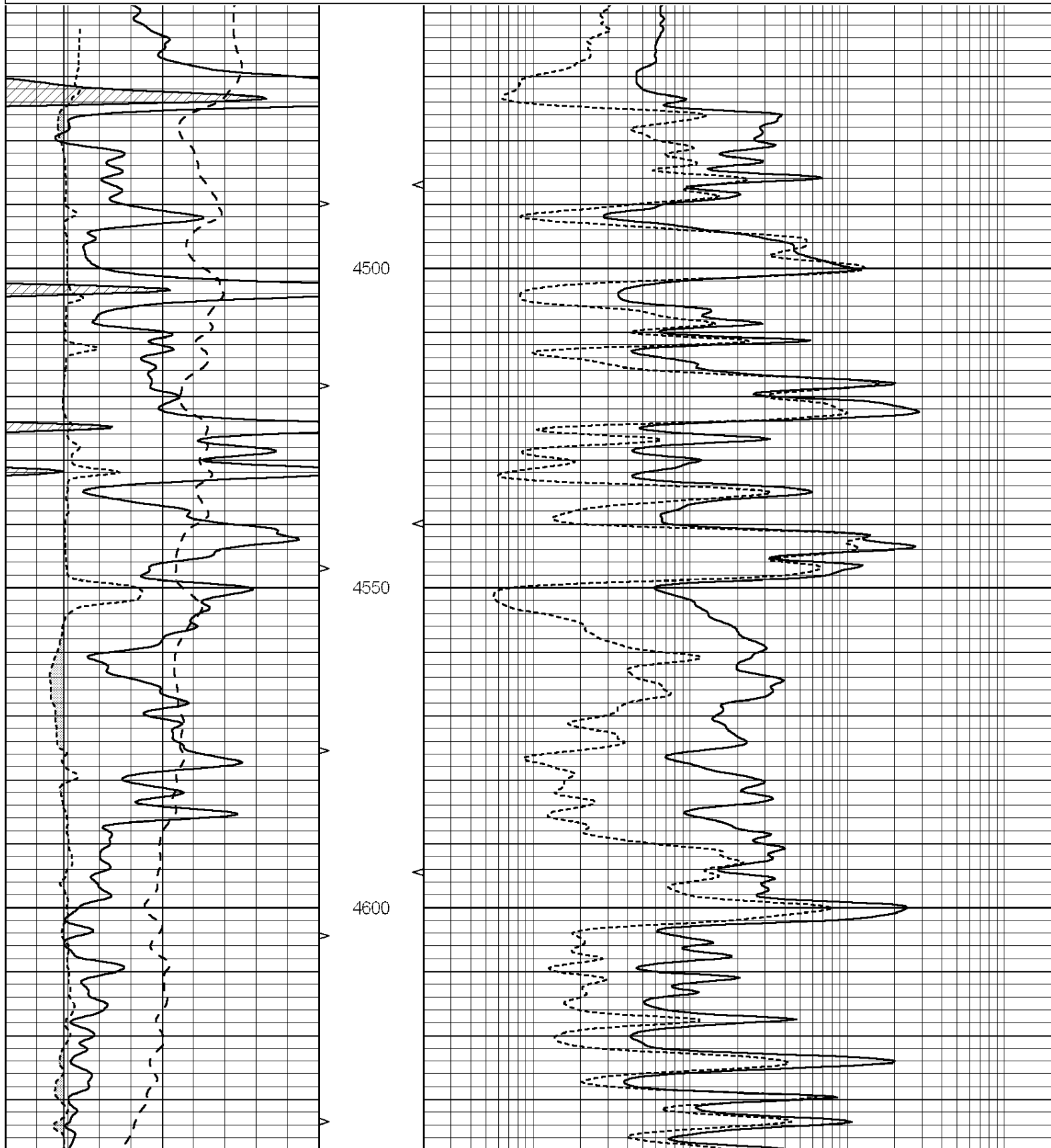


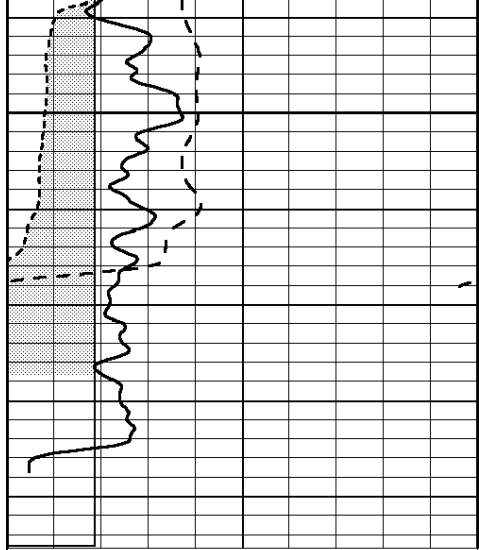
SUPERIOR
Hays,
Kansas

REPEAT SECTION

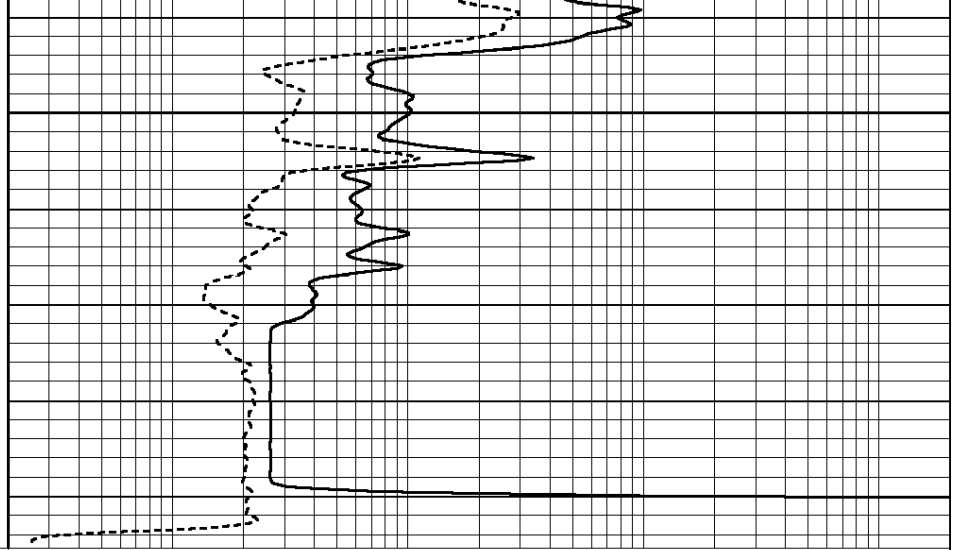
Database File: 009592rag.db
 Dataset Pathname: pass6.1
 Presentation Format: rag
 Dataset Creation: Thu Aug 30 14:01:12 2012
 Charted by: Depth in Feet scaled 1:240

0	GAMMA RAY (GAPI)	150	ABHV	0.2	GUARD (Ohm-m)	2000
-100	SP (mV)	100	10 (ft3)	0 0	NEUTRON (NAPI)	1000
6	CALIPER (in)	16	TBHV			
			0 (ft3)	10		





4650



0	GAMMA RAY (GAPI)	150	ABHV	0.2	GUARD (Ohm-m)	2000
-100	SP (mV)	100	10 (ft3)	0	NEUTRON (NAPI)	1000
6	CALIPER (in)	16	TBHV			
			0 (ft3)	10		