



SUPERIOR
Hays,
Kansas

**RADIATION
GUARD
LOG**

Company PALOMINO PETROLEUM, INC.
Well BETTY BETZ #1
Field WILDCAT
County NESS
State KANSAS

Company PALOMINO PETROLEUM, INC.
Well BETTY BETZ #1
Field WILDCAT
County NESS State KANSAS

Location: 1104' FNL & 817' FWL
API # : 15-135-25470-0000
Other Services
SEC 14 TWP 19S RGE 22W
Permanent Datum GROUND LEVEL Elevation 2226
Log Measured From KELLY BUSHING 10' A.G.L.
Drilling Measured From KELLY BUSHING
Elevation
K.B. 2236
D.F. 2234
G.L. 2226

Date	9/4/12		
Run Number	ONE		
Depth Driller	4361		
Depth Logger	4361		
Bottom Logged Interval	4359		
Top Log Interval	00		
Casing Driller	8 5/8" @ 220		
Casing Logger	220		
Bit Size	7 7/8		
Type Fluid in Hole	CHEMICAL MUD	CHLORIDES 4700 PPM	
Density / Viscosity	9.2/51		
pH / Fluid Loss	11.5/8.4		
Source of Sample	FLOWLINE		
Rin @ Meas. Temp	.70 @ 90F		
Rmf @ Meas. Temp	.52 @ 90F		
Rmc @ Meas. Temp	.84 @ 90F		
Source of Rmf / Rmc	MEASURED		
Rin @ BHT	.52 @ 119F		
Time Circulation Stopped	2 HOURS		
Time Logger on Bottom			
Maximum Recorded Temperature	119F		
Equipment Number	680		
Location	HAYS, KS.		
Recorded By	JASON CAPPELLUCCI		
Witnessed By	NICK GERSTNER		

<<< Fold Here >>>

All interpretations are opinions based on inferences from electrical or other measurements and we cannot and do not guarantee the accuracy or correctness of any interpretation, and we shall not, except in the case of gross or willful negligence on our part, be liable or responsible for any loss, costs, damages, or expenses incurred or sustained by anyone resulting from any interpretation made by any of our officers, agents or employees. These interpretations are also subject to our general terms and conditions set out in our current Price Schedule.

Comments

THANK YOU FOR USING SUPERIOR WELL SERVICE (785) 628-6395
DIRECTIONS
BAZINE KS. - 2 W. TO RD BB - 2 S. - E. INTO

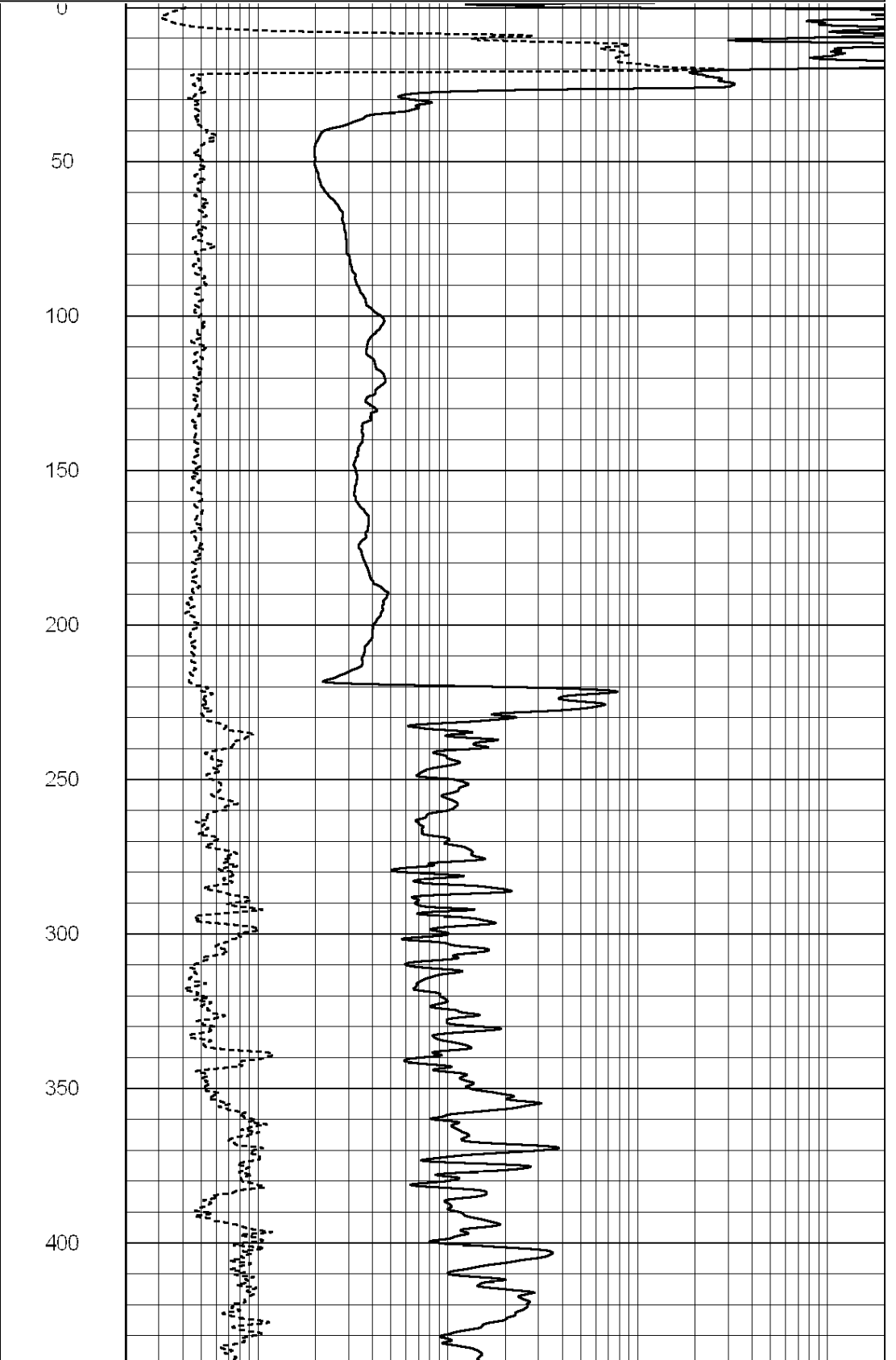
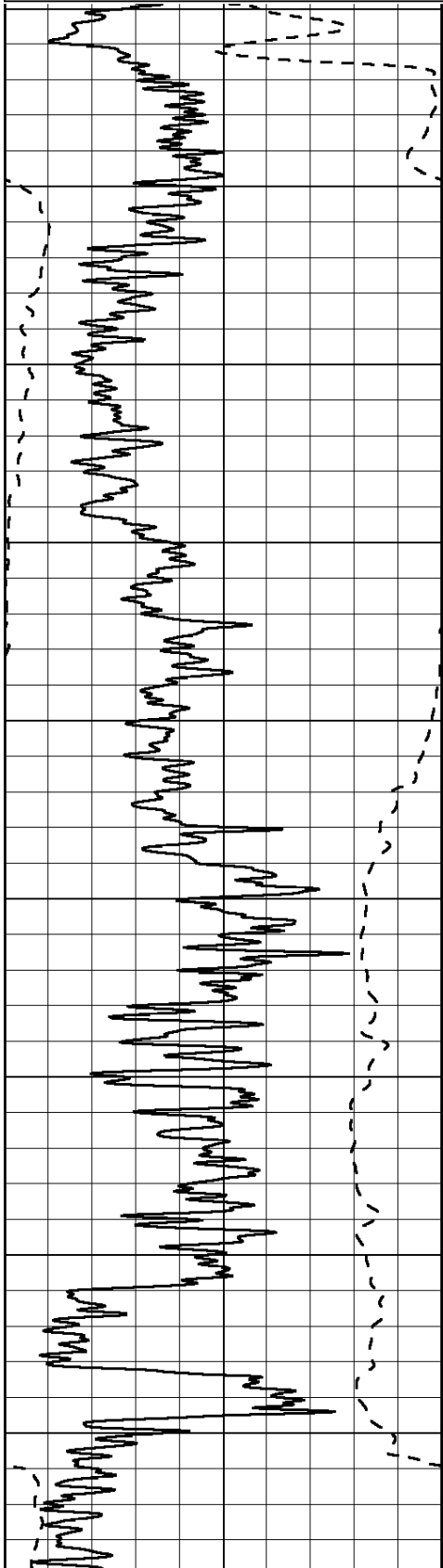


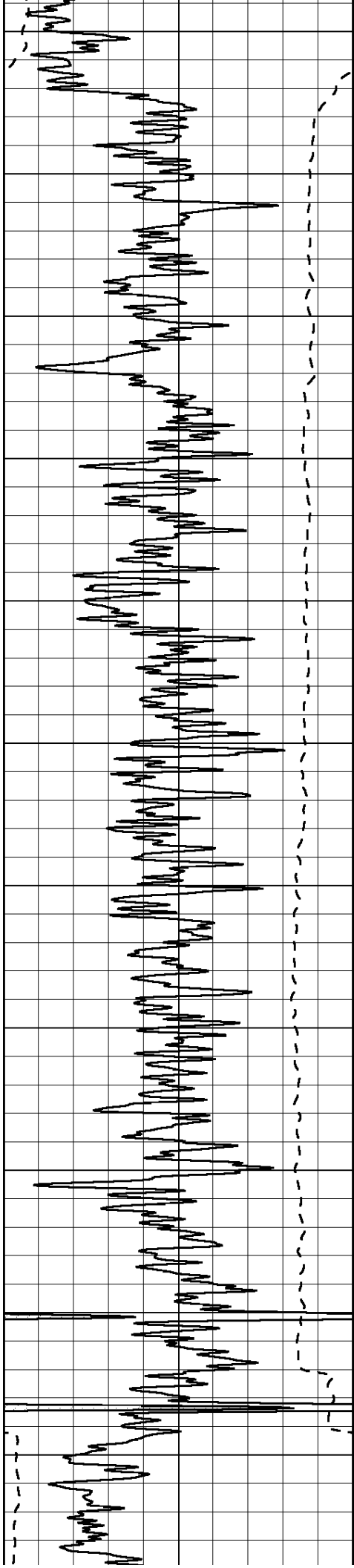
SUPERIOR
Hays,
Kansas

MAIN SECTION

Database File: 009595rag.db
 Dataset Pathname: pass3.2
 Presentation Format: rag2
 Dataset Creation: Tue Sep 04 09:54:01 2012 by Calc Open-Cased 090629
 Charted by: Depth in Feet scaled 1:600

0	GAMMA RAY (GAPI)	150	ABHV (ft3)	0.2	GUARD (Ohm-m)	2000
-100	SP (mV)	100		0	NEUTRON (NAPI)	1000
-----			TBHV (ft3)	-----		





450

500

550

600

650

700

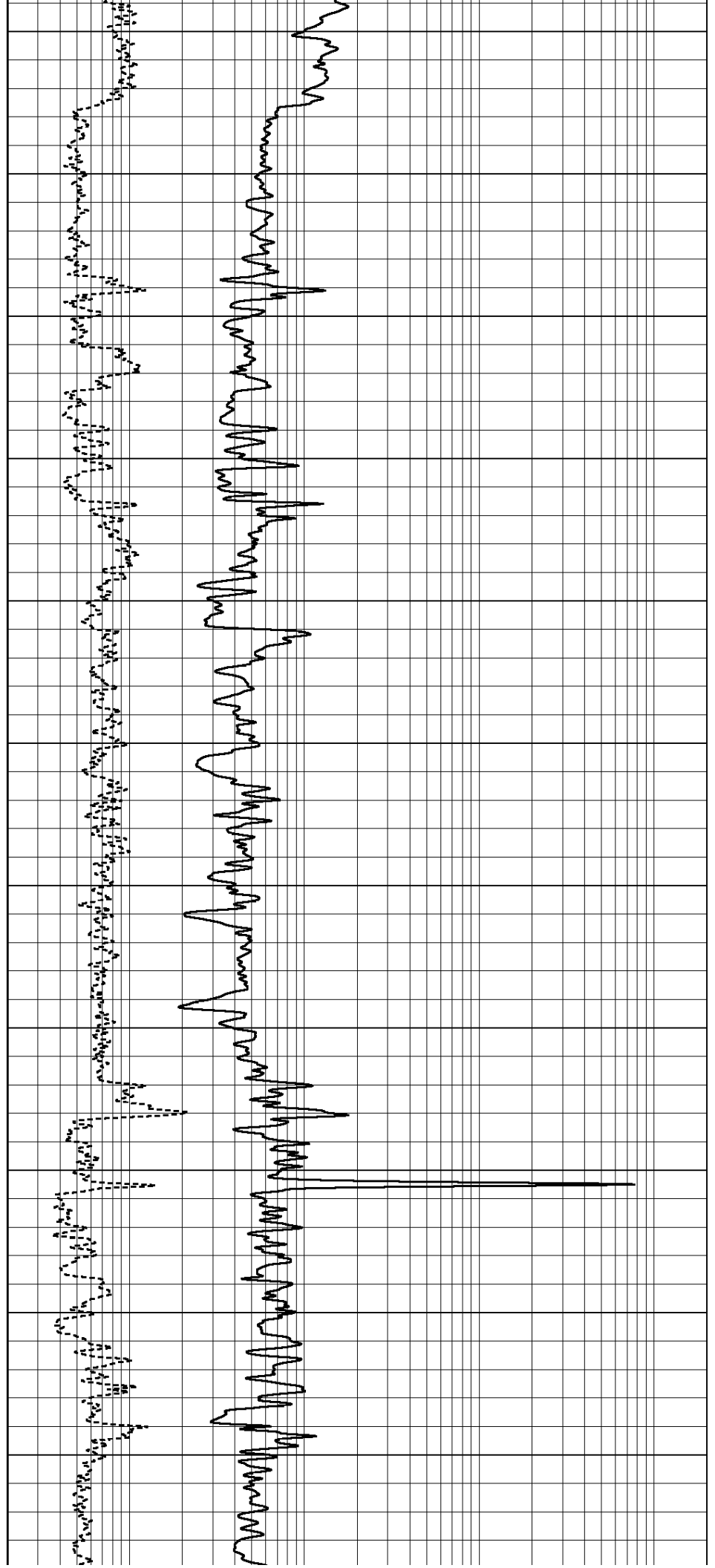
750

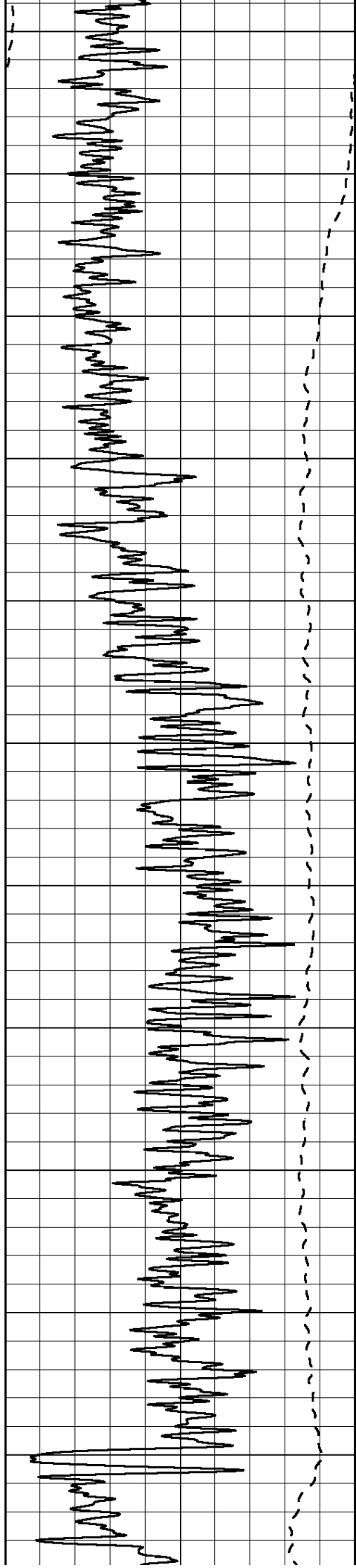
800

850

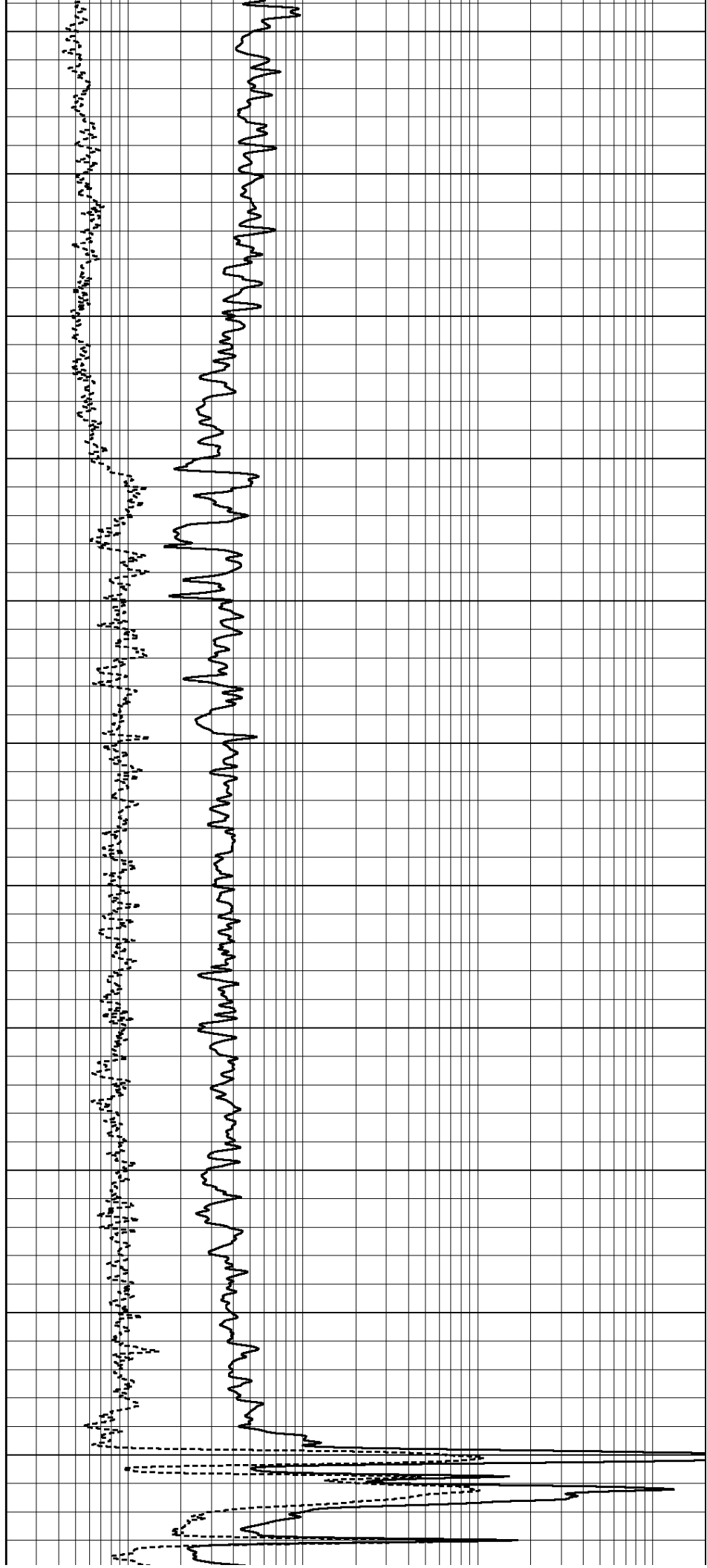
900

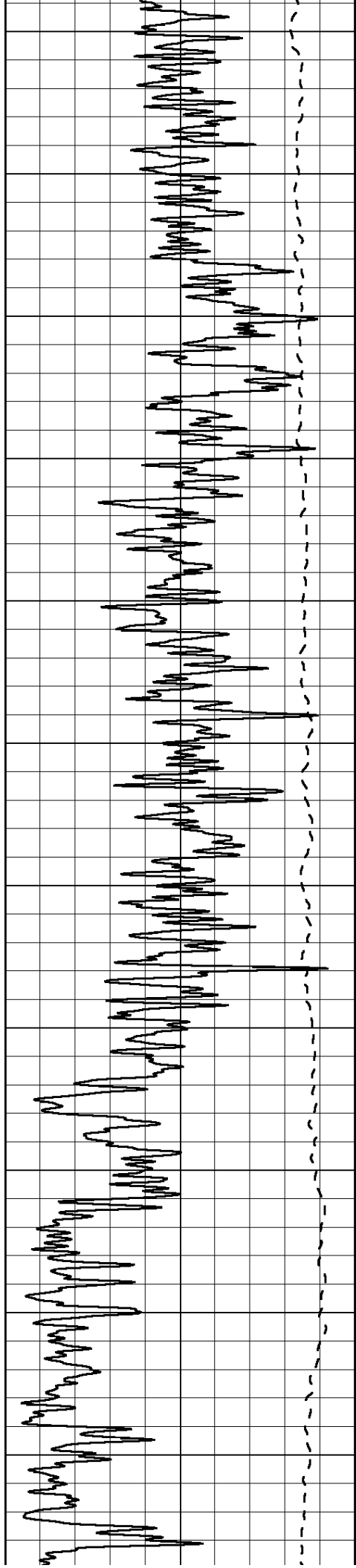
950





1000
1050
1100
1150
1200
1250
1300
1350
1400
1450
1500





1550

1600

1650

1700

1750

1800

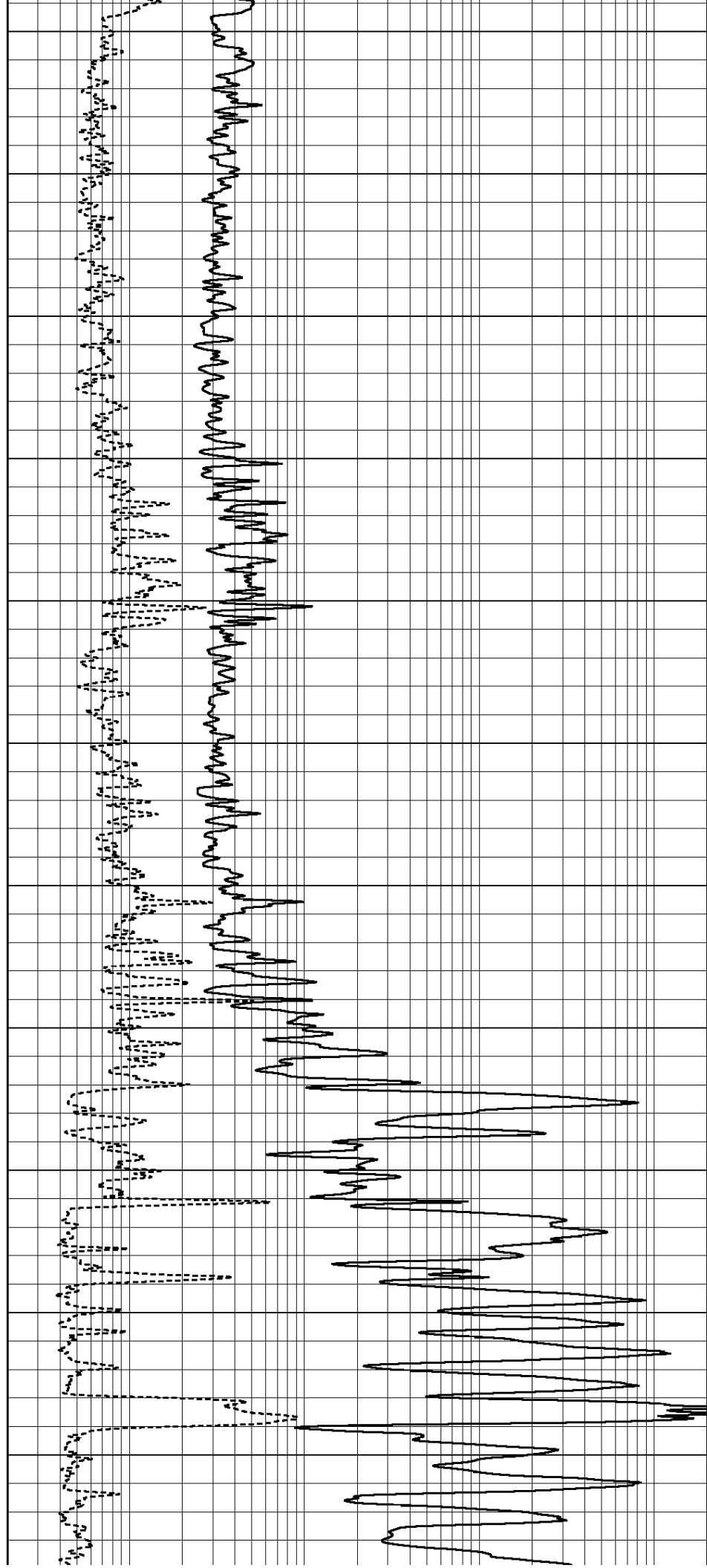
1850

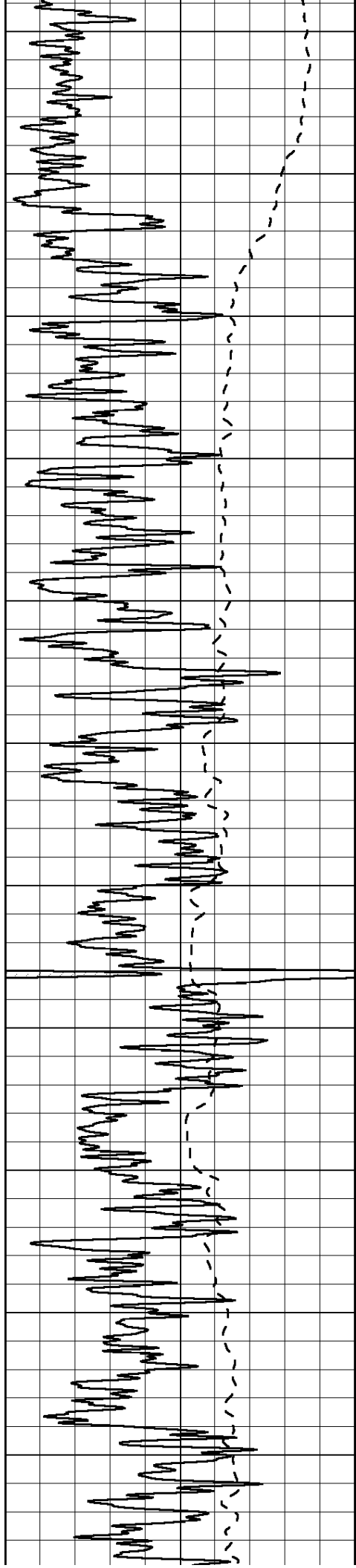
1900

1950

2000

2050





2100

2150

2200

2250

2300

2350

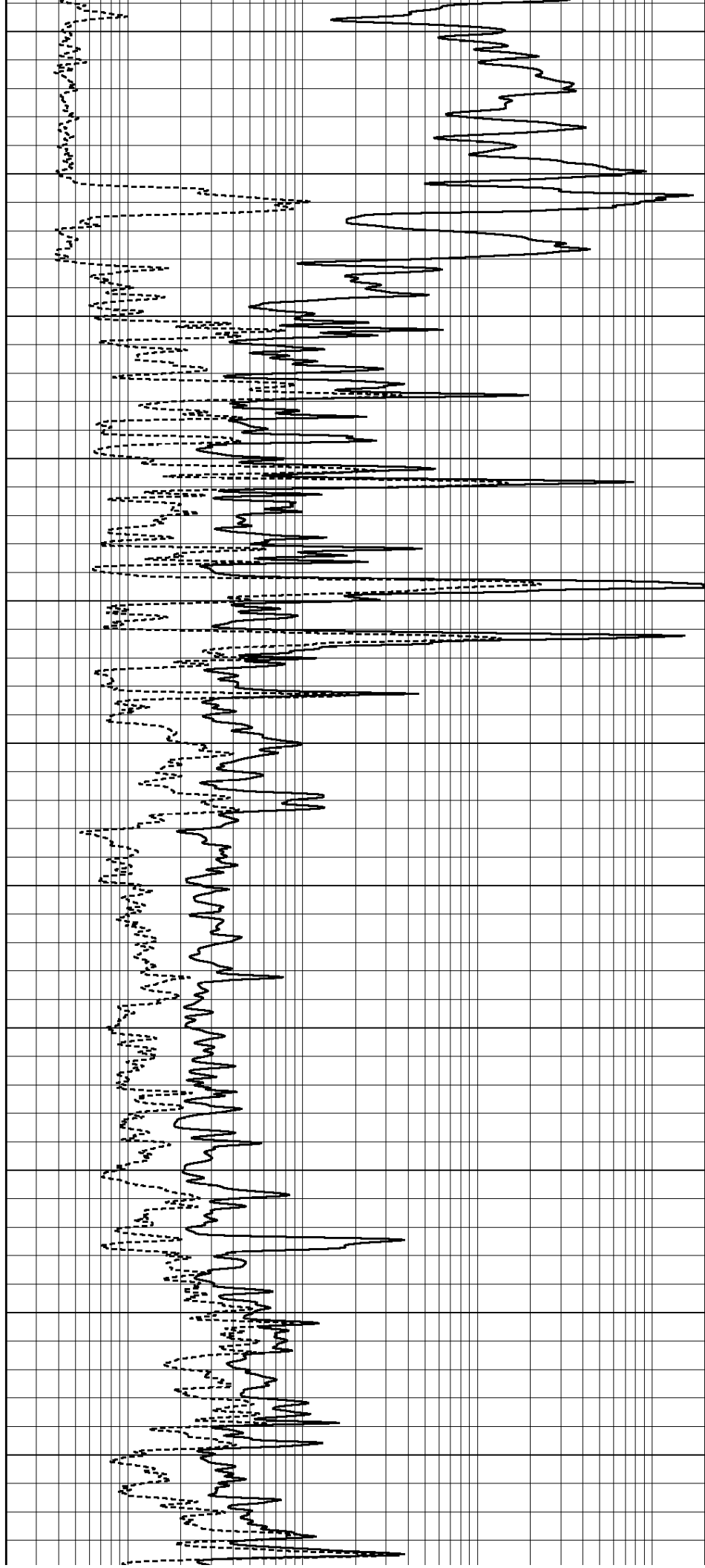
2400

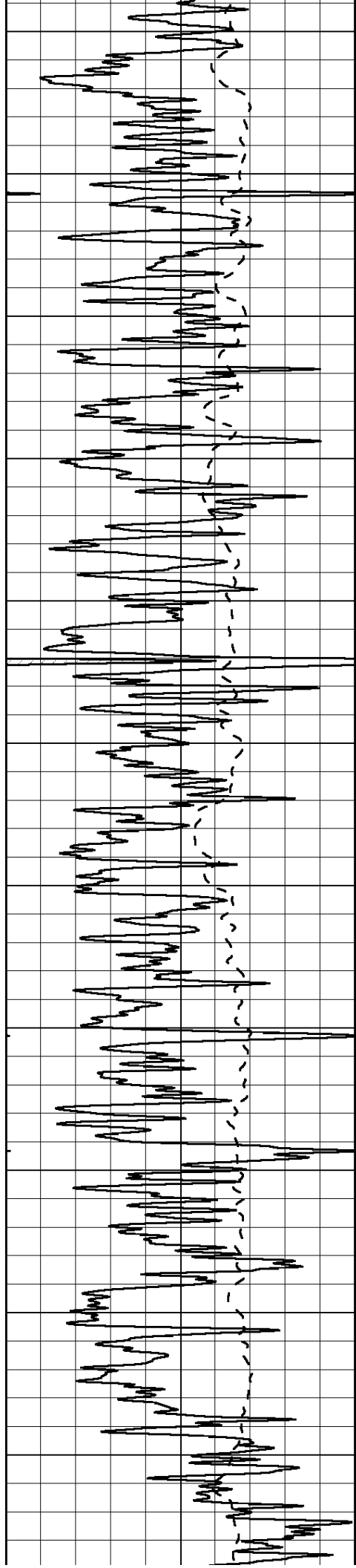
2450

2500

2550

2600





2650

2700

2750

2800

2850

2900

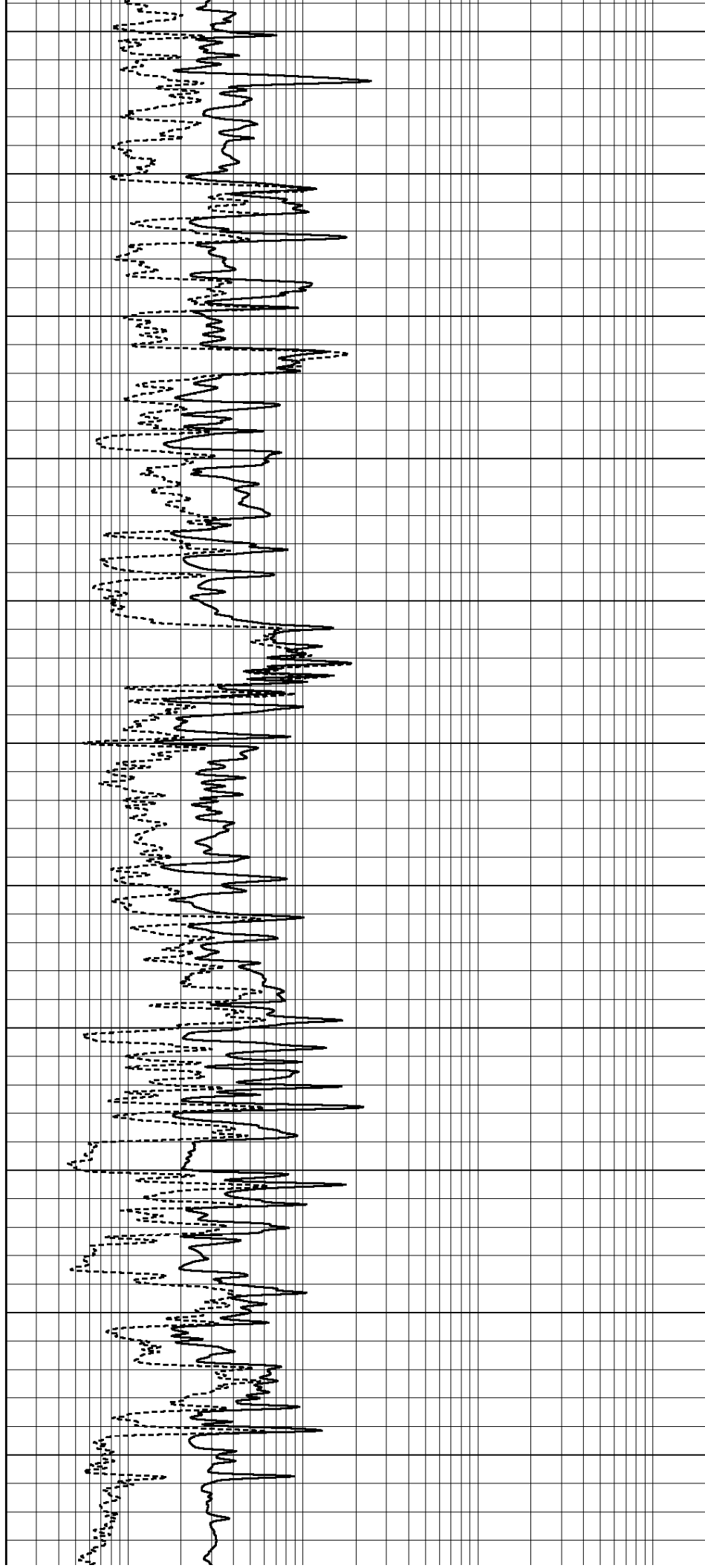
2950

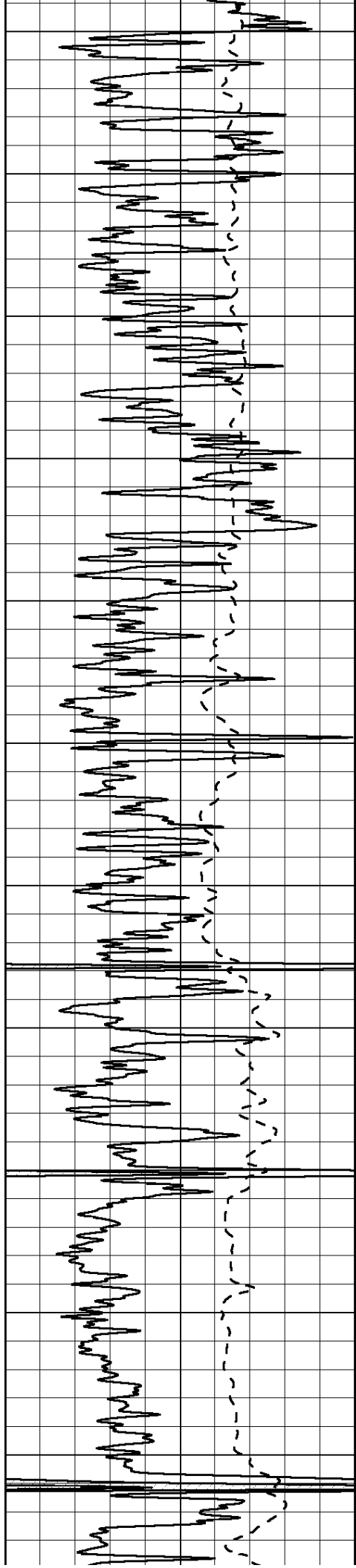
3000

3050

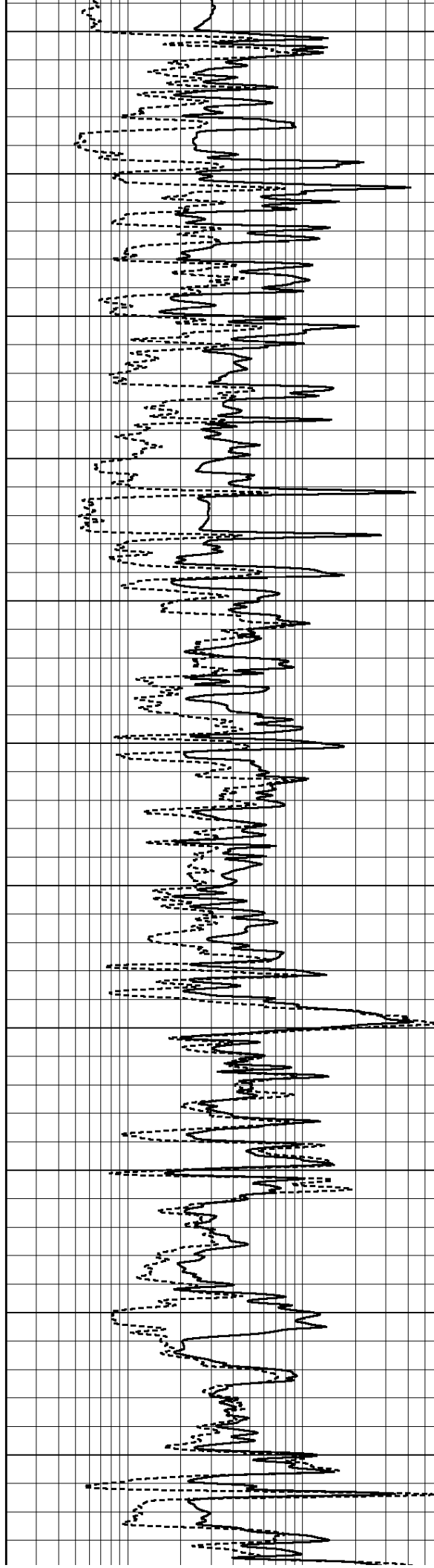
3100

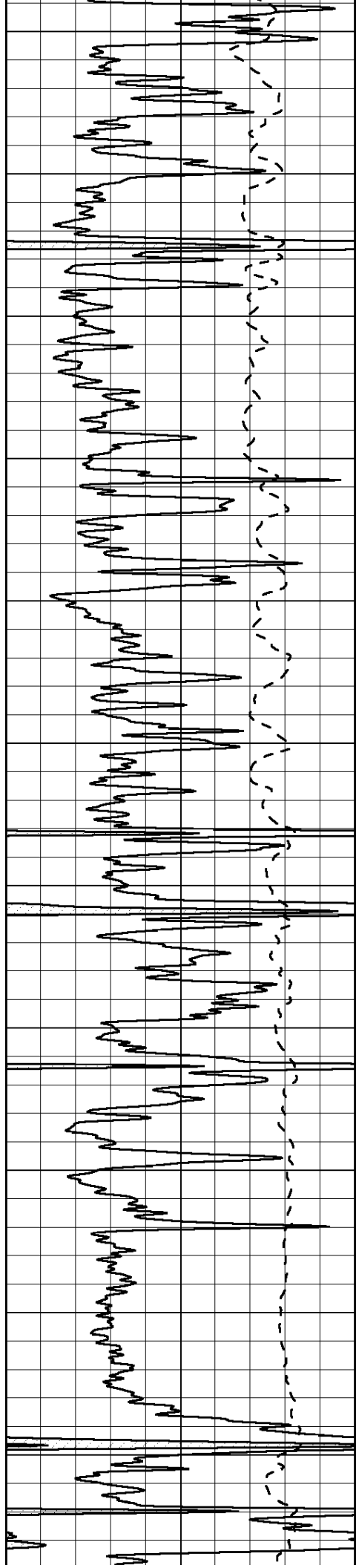
3150





3200
3250
3300
3350
3400
3450
3500
3550
3600
3650
3700





3750

3800

3850

3900

3950

4000

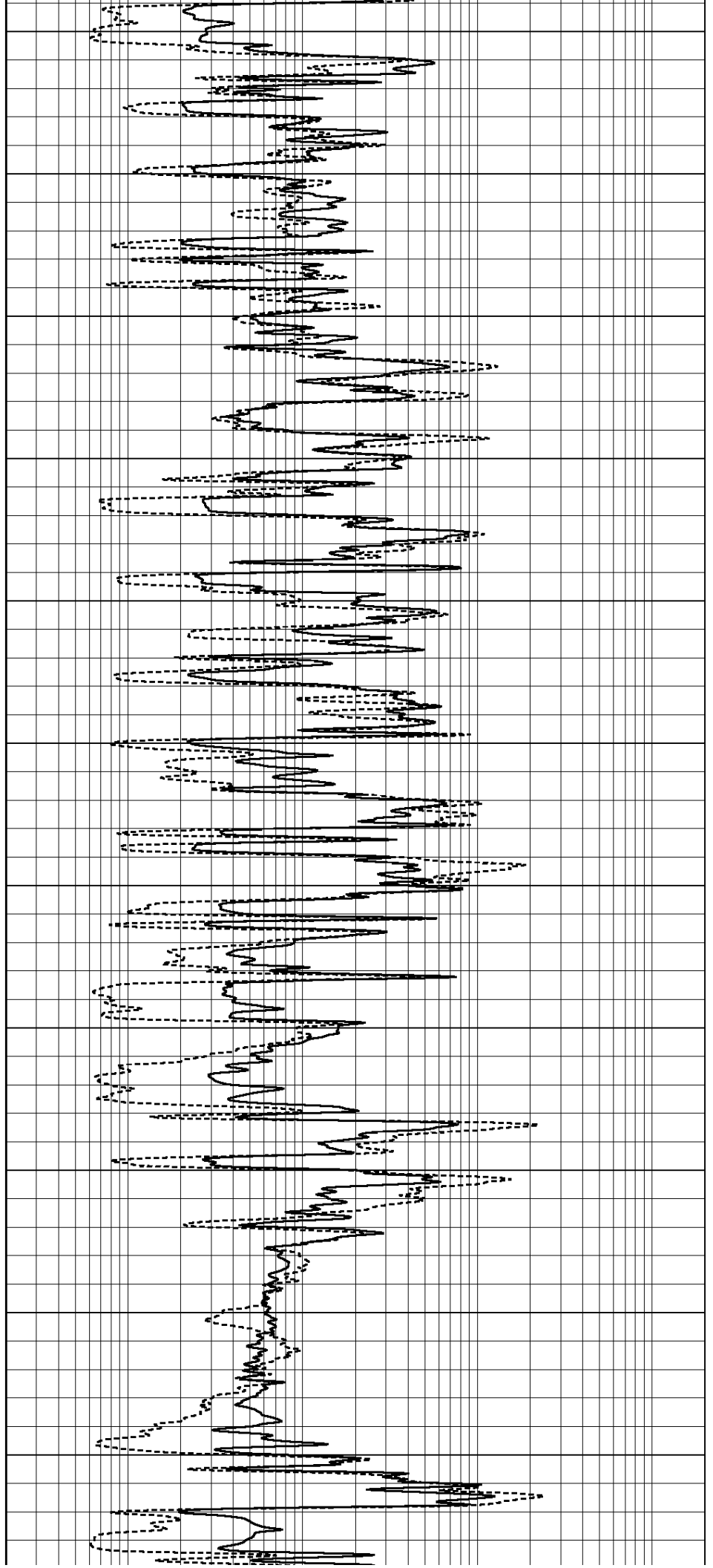
4050

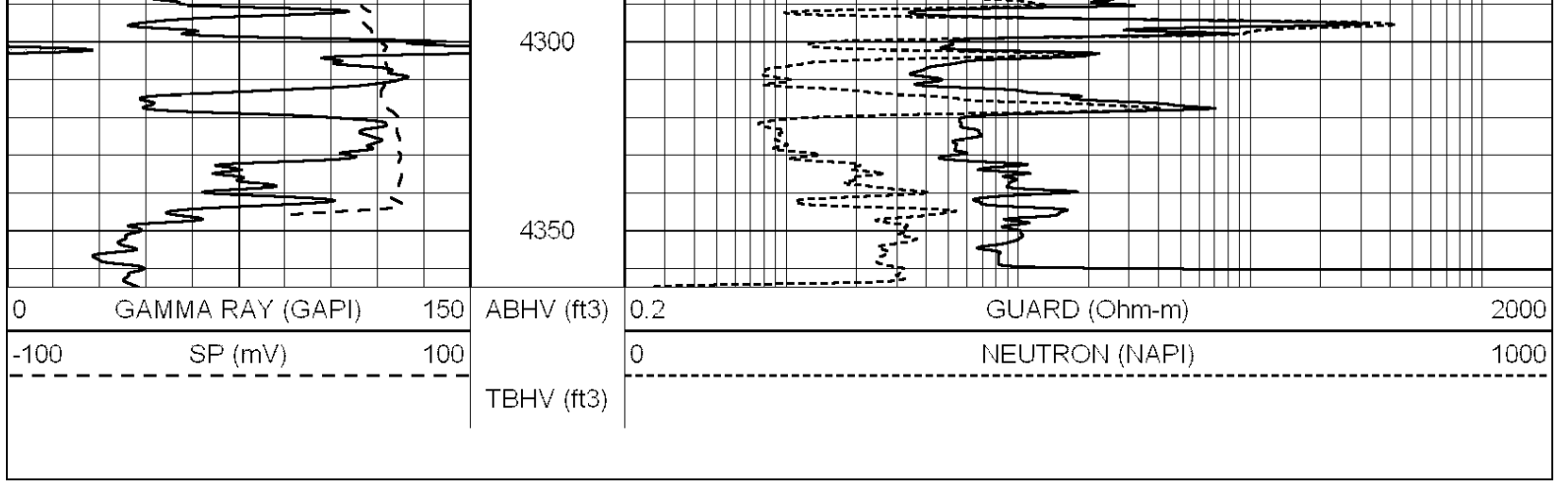
4100

4150

4200

4250

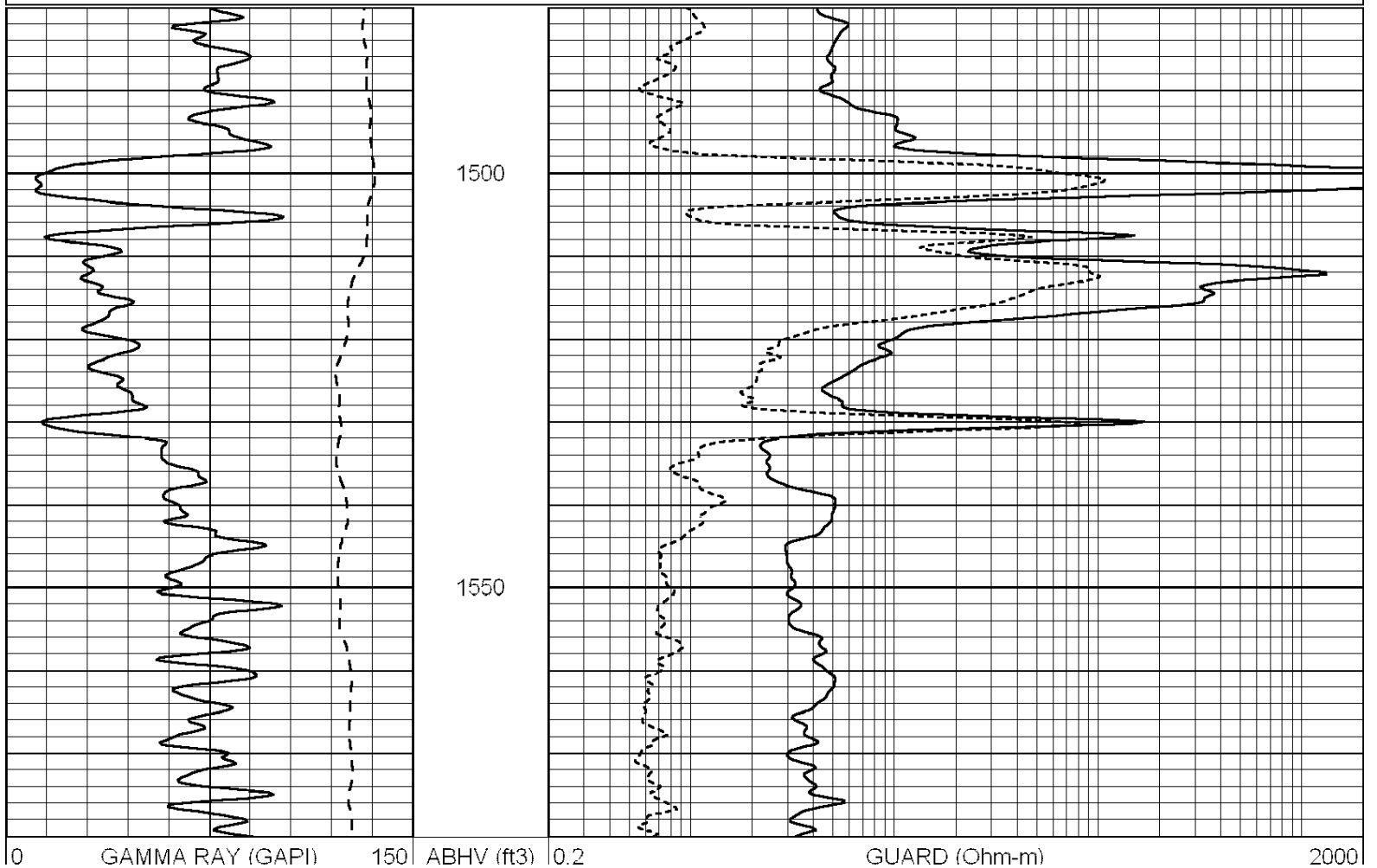
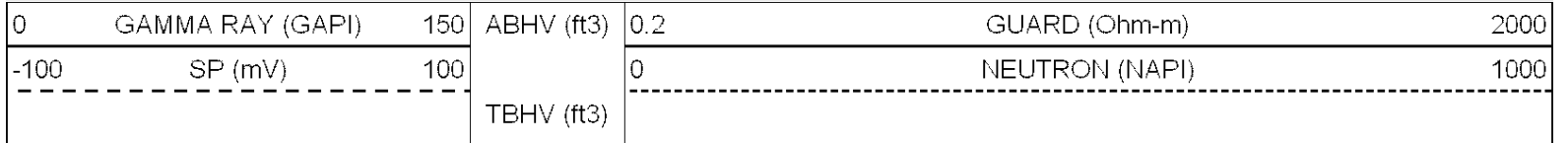




SUPERIOR
Hays,
Kansas

ANHYDRITE

Database File: 009595rag.db
 Dataset Pathname: pass3.3
 Presentation Format: rag2
 Dataset Creation: Tue Sep 04 09:32:19 2012 by Calc Open-Cased 090629
 Charted by: Depth in Feet scaled 1:240



-100 SP (mV) 100

TBHV (ft3)

0 NEUTRON (NAPI) 1000

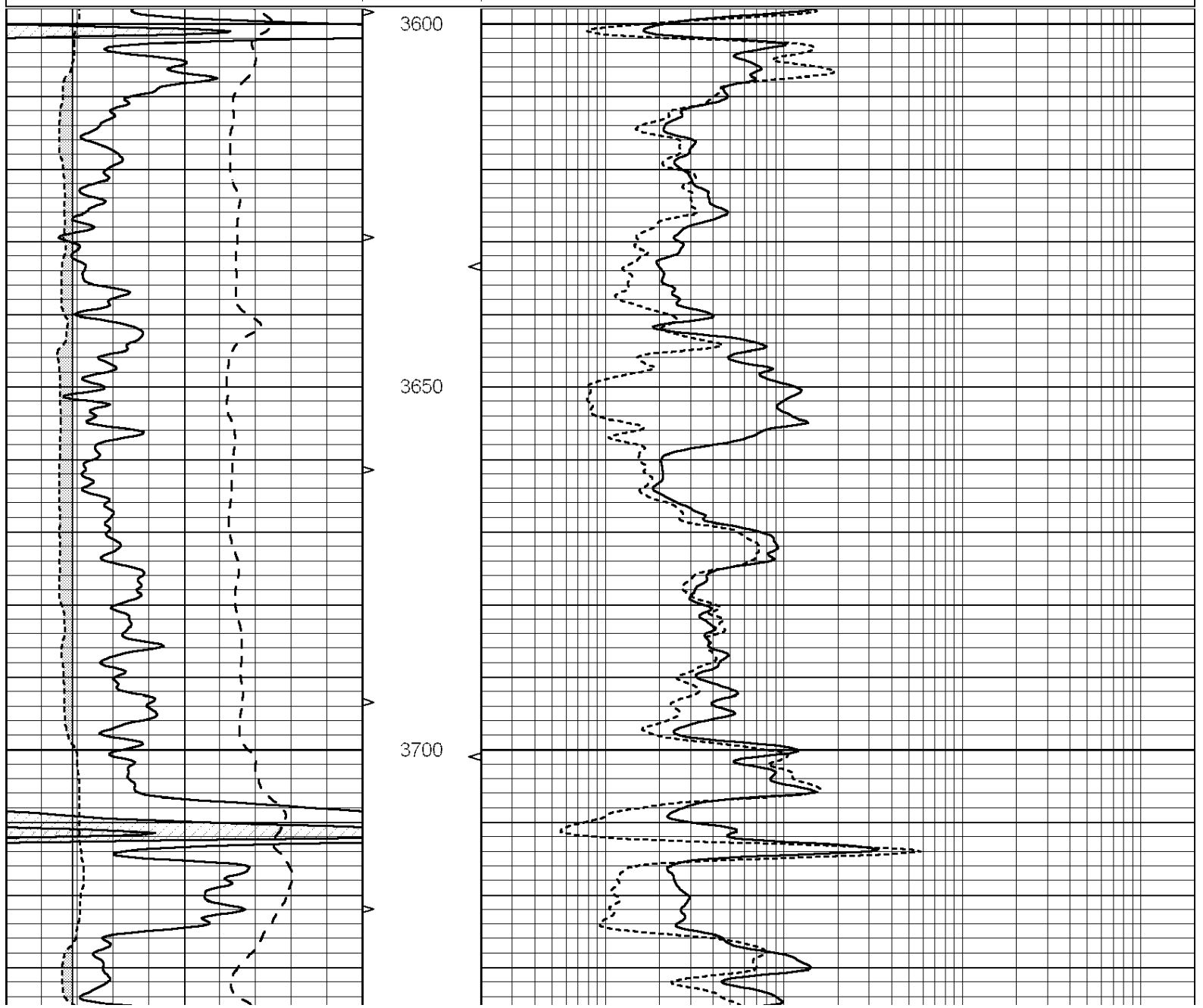


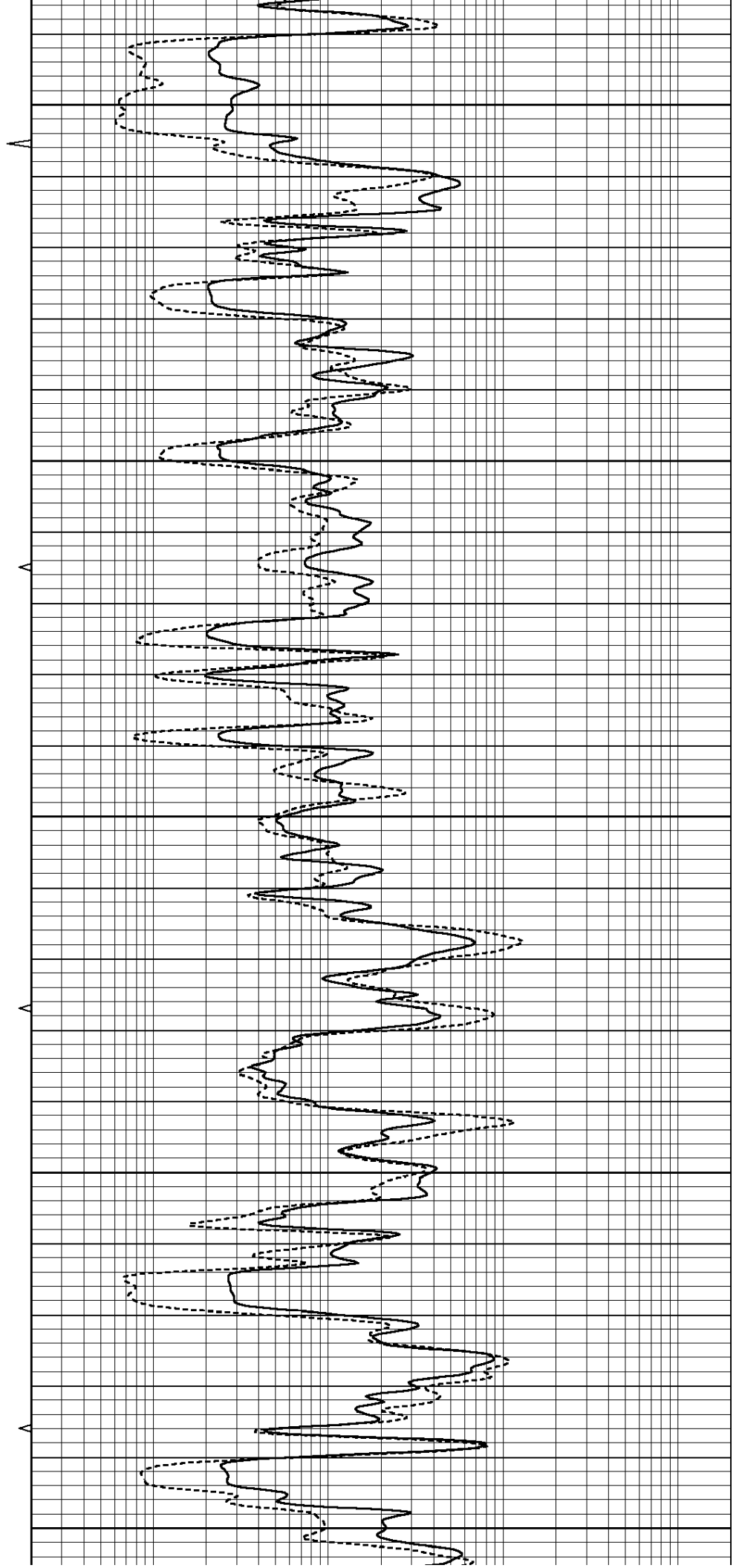
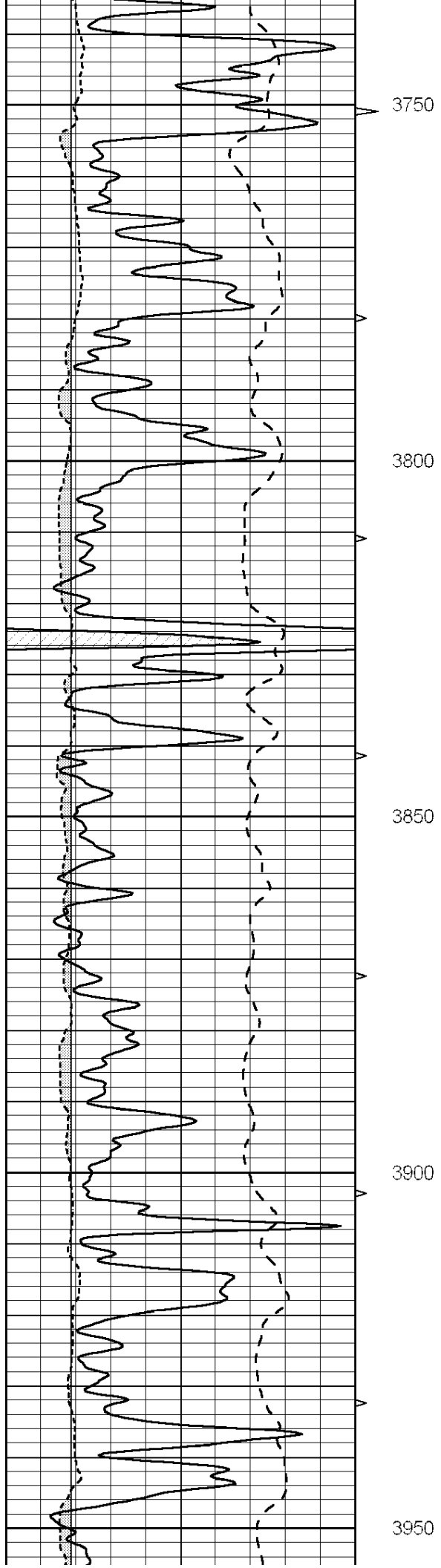
SUPERIOR
Hays,
Kansas

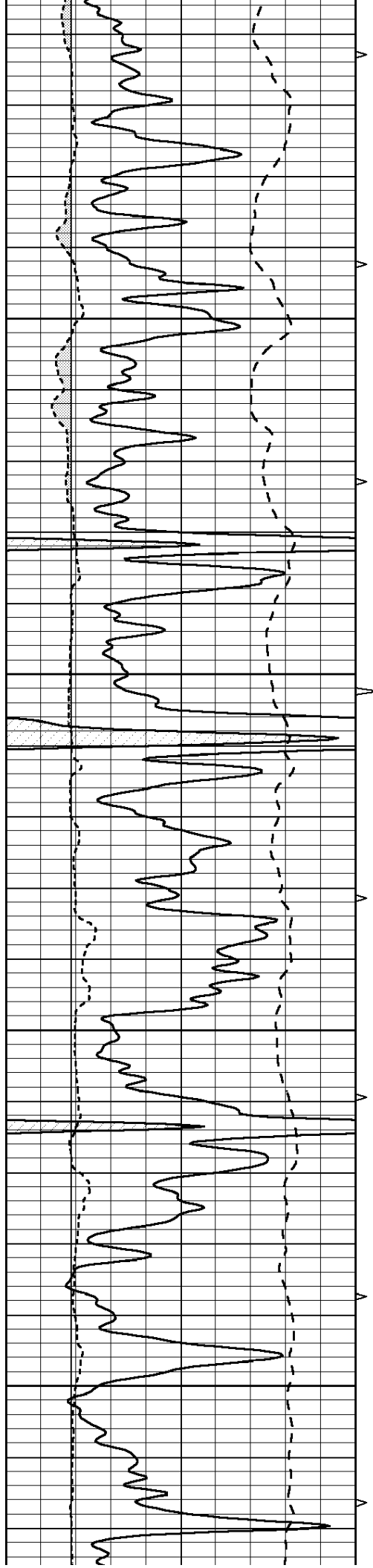
MAIN SECTION

Database File: 009595rag.db
Dataset Pathname: pass3.1
Presentation Format: rag
Dataset Creation: Tue Sep 04 09:12:03 2012 by Calc Open-Cased 090629
Charted by: Depth in Feet scaled 1:240

0	GAMMA RAY (GAPI)	150	ABHV	0.2	GUARD (Ohm-m)	2000
-100	SP (mV)	100	10 (ft3)	0	NEUTRON (NAPI)	1000
6	CALIPER (in)	16	TBHV			
			0 (ft3) 10			





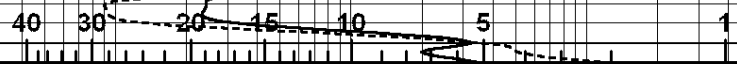


4000

4050

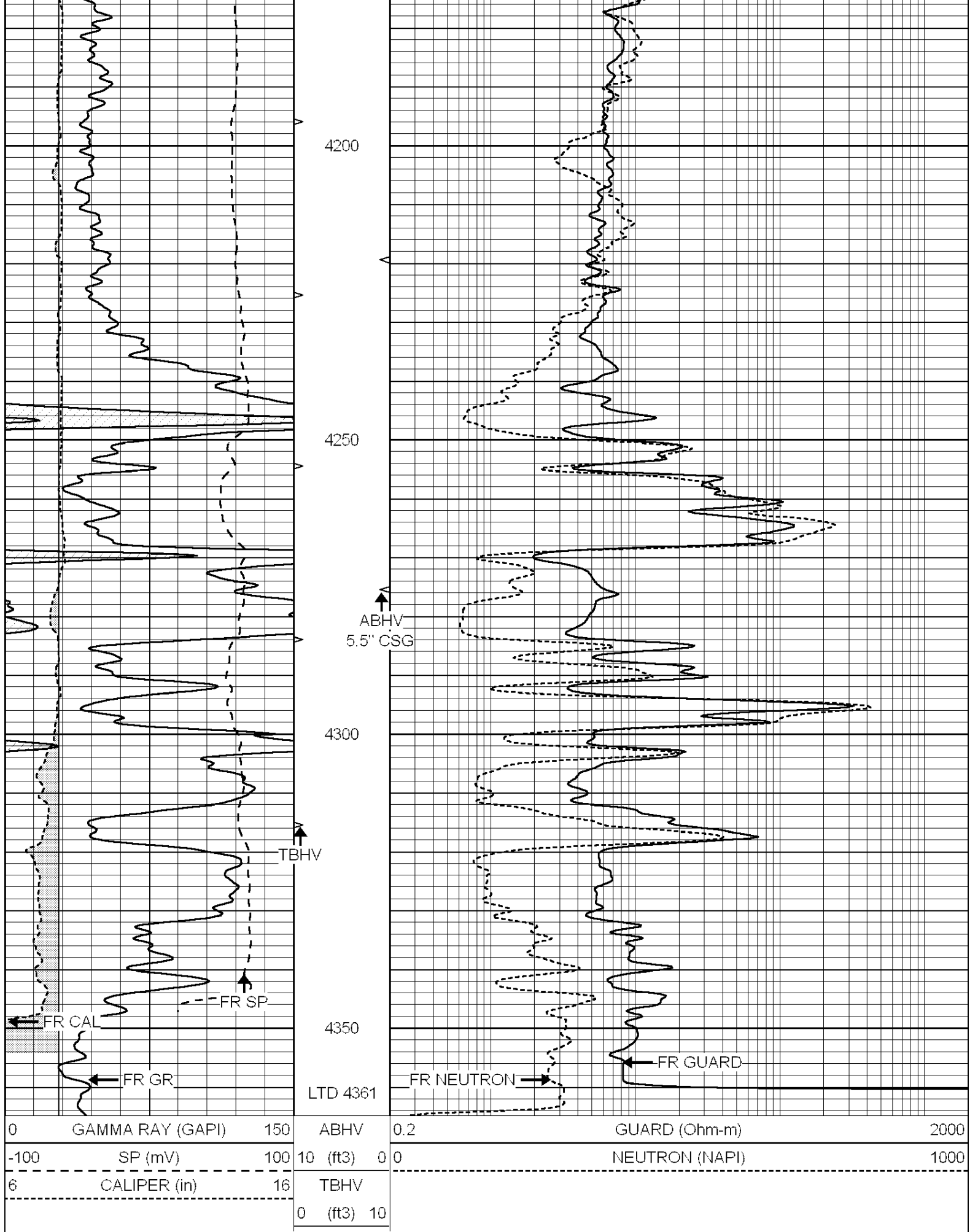
4100

4150



POROSITY LIMESTONE

(FLUID-FILLED HOLE)



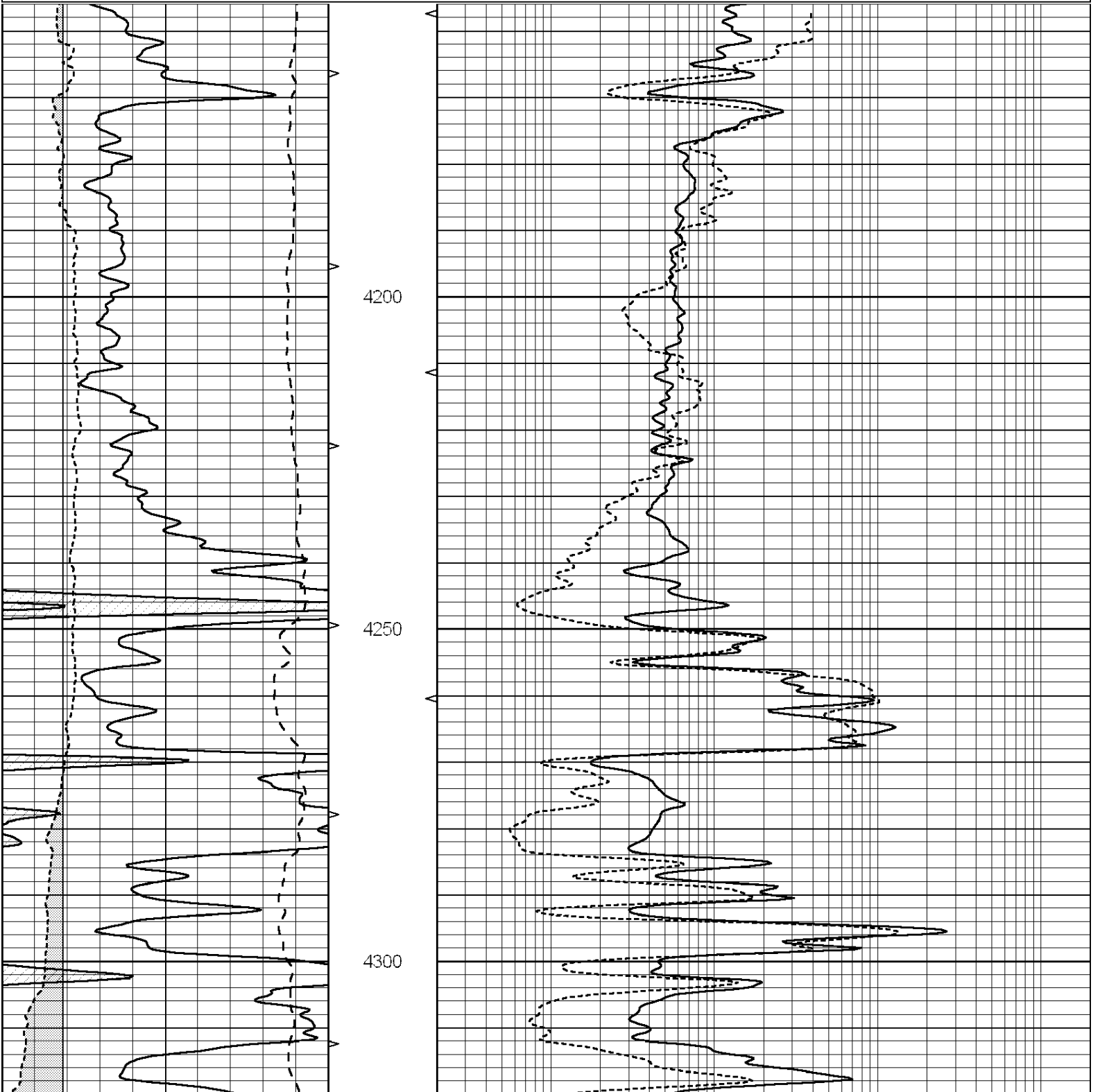


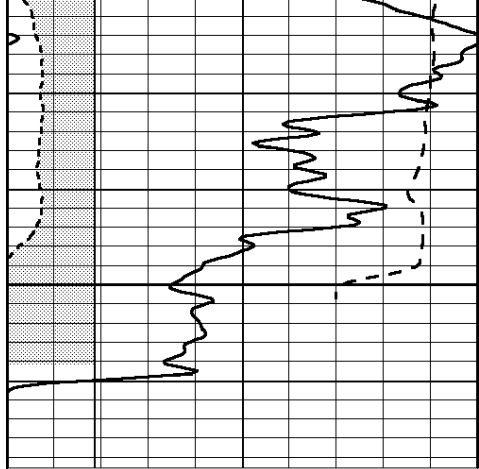
SUPERIOR
Hays,
Kansas

REPEAT SECTION

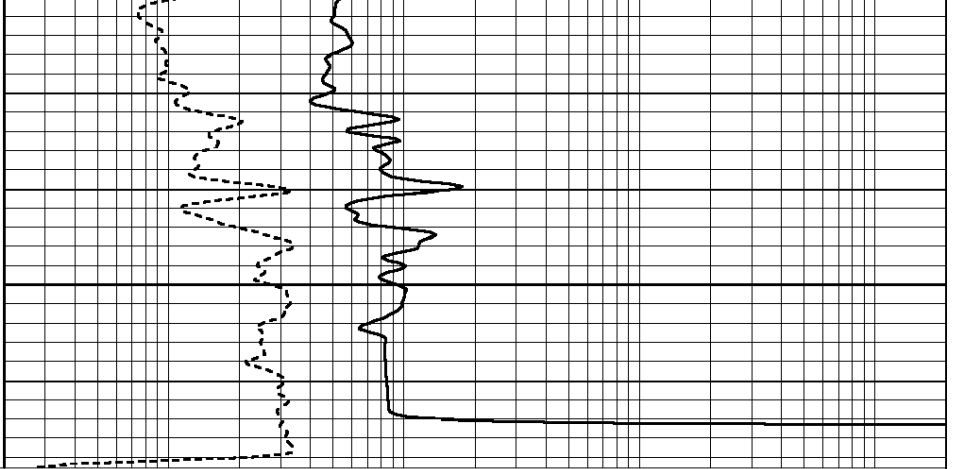
Database File: 009595rag.db
 Dataset Pathname: pass2.1
 Presentation Format: rag
 Dataset Creation: Tue Sep 04 09:13:58 2012 by Calc Open-Cased 090629
 Charted by: Depth in Feet scaled 1:240

0	GAMMA RAY (GAPI)	150	ABHV	0.2	GUARD (Ohm-m)	2000
-100	SP (mV)	100	10 (ft3)	0 0	NEUTRON (NAPI)	1000
6	CALIPER (in)	16	TBHV			
			0 (ft3)	10		





4350



0	GAMMA RAY (GAPI)	150	ABHV	0.2	GUARD (Ohm-m)	2000
-100	SP (mV)	100	10 (ft3) 0 0	0	NEUTRON (NAPI)	1000
6	CALIPER (in)	16	TBHV			
			0 (ft3) 10			