



**GAMMA RAY
CASING COLLAR
VARIABLE DENSITY LOG**

Company: JOHN M. DENMAN OIL CO., INC.
Well: KEENAN # S-1

Field: ELGIN
County: CHAUTAUQUA
State: KANSAS

Location: SW NW SE NE FEL
3316 TSL & 1281 FEL
SEC 34 TWP 34S RGE 10E
Elevation: 878' est

Perf: PERFORMANT
Permament Datum: QL
Log Measured From: QL
Drilling Measured From: QL

Date: 8-21-2012
Run Number: ONE
Depth: 1400'
Bottom Logged Interval: SURFACE

Open Hole Size: 8.34"
Density / Viscosity: N/A
Max. Recorded Temp: N/A

Time Well Ready: ON SURFACE
Estimated Cement Top: SURFACE
Equipment Number: 9 OWG
Recorded By: HOHINY, OK

Witnessed By: BRYON MARSHALL
Run Number: BIR, WISE
Run Number: BIR, WISE

Gamma Record: 4.5"
Surface String: 4.5"
Production String: TO

Company	JOHN M. DENMAN OIL CO., INC.
Well	KEENAN # S-1
Field	ELGIN
County	CHAUTAUQUA
State	KANSAS
Location	SW NW SE NE FEL 3316 TSL & 1281 FEL
Permament Datum	QL
Log Measured From	QL
Drilling Measured From	QL
Date	8-21-2012
Run Number	ONE
Depth	1400'
Bottom Logged Interval	SURFACE
Open Hole Size	8.34"
Density / Viscosity	N/A
Max. Recorded Temp.	N/A
Time Well Ready	ON SURFACE
Estimated Cement Top	SURFACE
Equipment Number	9 OWG
Recorded By	HOHINY, OK
Witnessed By	BRYON MARSHALL
Run Number	BIR, WISE
Run Number	BIR, WISE
Gamma Record	4.5"
Surface String	4.5"
Production String	TO

<<< Fold Here >>>

All interpretations are opinions based on inferences from electrical or other measurements and we cannot and do not guarantee the accuracy or correctness of any interpretation, and we shall not, except in the case of gross or willful negligence on our part, be liable or responsible for any loss, costs, damages, or expenses incurred or sustained by anyone resulting from any interpretation made by any of our officers, agents or employees. These interpretations are also subject to our general terms and conditions set out in our current Price Schedule.

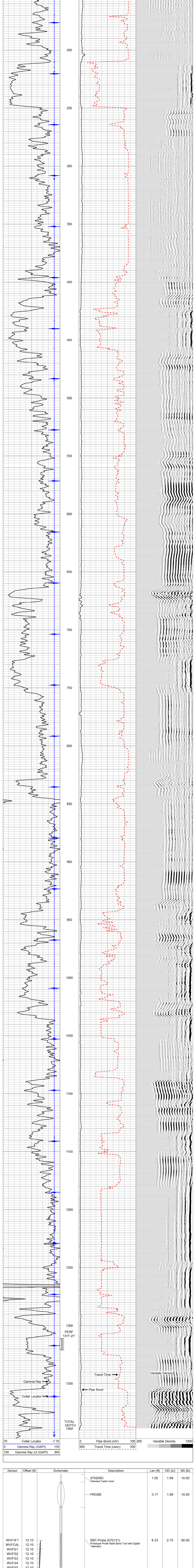
Comments

FILE # OWG-2154RAD
THANK YOU FOR USING OSAGE WIRELINE!

CEMENT BOND LOG

Database File: owg-2154rad john denman oil keenan s-1.db
Dataset Pathname: pass1
Presentation Format: 569 cbl
Dataset Creation: Tue Aug 21 09:28:11 2012 by Log Open-Cased 100827
Charted by: Depth in Feet scaled 1:240

70	Collar Locator	-7.75	0	Pipe Bond (mV)	100	200	Variable Density	1200
0	Gamma Ray (GAPI)	150	900	Travel Time (usec)	200			
150	Gamma Ray x2 (GAPI)	300						



70	Collar Locator	-7.75	0	Pipe Bond (mV)	100	200	Variable Density	1200
0	Gamma Ray (GAPI)	150	900	Travel Time (usec)	200			
150	Gamma Ray x2 (GAPI)	300						

Sensor	Offset (ft)	Schematic	Description	Len (ft)	OD (in)	Wt (lb)
			STNDRD Standard Cable Head	1.00	1.69	10.00
			PROBE	3.17	1.69	10.00
			RBT-Probe (070131) Prototype Probe Radi Bond Tool with Digital Telemetry	8.33	2.75	90.00
			PROBE	3.17	1.69	10.00
			GR-Probe275dig (080921) Probe Digital Gamma CCL	4.75	2.75	57.00
WVF3FT	12.10					
WVFCAL	12.10					
WVFS1	12.10					
WVFS2	12.10					
WVFS3	12.10					
WVFS4	12.10					
WVFS5	12.10					
WVFS6	12.10					
WVFS7	12.10					
WVFS8	12.10					
WVF5FT	11.10					
CCL	3.63					
GR	0.90					

Dataset: owg-2154rad john denman oil keenan s-1.db; field/well/run/pass1
Total Length: 20.42 ft
Total Weight: 177.00 lb
O.D.: 2.75 in